

### KITS

KIT BILL OF MATERIALS CAN BE FOUND LISTED ON THE 'KIT COMPONENTS' PAGES IMMEDIATELY FOLLOWING CORRESPONDING PUMP PAGES.

#### FILTER KITS

FILTER KITS INCLUDE EXHAUST FILTER ELEMENTS, O-RINGS, OIL DRAIN PLUG GASKET & STRAINER BAFFLE WHERE APPLICABLE.

MODEL(S)		PART NUMBER
0010/0016 B	(OEM EQU. 993.062.02)	BFK001
0010/0016 C/D		BFK002
0012/0021 B	(OEM EQU. 993.120.02)	BFK003

#### GASKET KITS

GASKET KITS INCLUDE O-RINGS, GASKETS & SHAFT SEALS FOR MINOR MAINTENANCE.

MODEL(S)		PART NUMBER
0010/0016 B/C/D	(OEM EQU. 990.043.00)	BGK001
0012/0021 B	(OEM EQU. 990.050.02)	BGK002

#### OVERHAUL KITS

OVERHAUL KITS INCLUDE ALL COMPONENTS OF GASKET KITS PLUS BEARING SLEEVES & VANES FOR MAJOR OVERHAUL.

MODEL(S)		PART NUMBER
0010 B	(OEM EQU. 993.066.02)	BMK001
0016 B	(OEM EQU. 993.096.02)	BMK002
0010 C/D	(OEM EQU. 993.096.01)	BMK003
0016 C/D		BMK003A
0012/0021 B	(OEM EQU. 993.121.02)	BMK004

#### OVERHAUL KITS w/EXHAUST FILTERS

OVERHAUL KITS W/EXHAUST FILTERS INCLUDE ALL COMPONENTS OF OVERHAUL KITS PLUS EXHAUST FILTERS & STRAINER BAFFLE AS REQUIRED.

**NOTE:** KITS SOLD IN EUROPE CONTAIN EXHAUST FILTERS WITH DAMPERS WHERE APPROPRIATE.

MODEL(S)		PART NUMBER
0010 B		BMKF001
0016 B		BMKF002
0010 C/D		BMKF003
0016 C/D		BMKF003A
0012/0021		BMKF004



### FEATURED SPARES

ALL AVAILABLE SPARES FOR THIS SERIES CAN BE FOUND LISTED ON THE 'INDIVIDUAL SPARES' PAGES AT THE END OF THIS SECTION.

#### EXHAUST FILTERS

MODEL(S)		PART NUMBER
0010/0016 B	(REQ. 1)	53230001
0010/0016 C/D	(REQ. 1)	532105216
0012/0021 B	(REQ. 1)	53251001
0012/0021 B	(REQ. 1 W/DAMPER)	532917478



#### INLET FILTERS

MODEL(S)		PART NUMBER
ALL	(REQ. 1)	53200500



#### RECOMMENDED OILS

TYPE	PART NUMBER
PLUS 530 (1L/1.06QT) GENERAL PURPOSE	530-001
PLUS 570 (1L/1.06QT) FULLY SYNTHETIC	570001



### KIT COMPONENTS

PART NUMBER	ITEM DESCRIPTION	0010B FILTER BFK001	0010B GASKET BGK001	0010B OVERHUAL BMK001	0010B W/FILTERS BMKF001	0010C,D FILTER BFK002	0010C,D GASKET BGK001	0010C,D OVERHUAL BMK003	0010C,D W/FILTERS BMKF003
473103122	BEARING,NEEDLE ROLLER			2	2			2	2
472105768	BEARING,SLEEVE			2	2			2	2
532105216	FILTER,EXHAUST,W/O'RING					1			1
53230001	FILTER,EXHAUST,W/O'RING	1			1				
300070	FLAPPER,BUNA,2MM	1							
48021600	GASKET 56X56X1 MM		1	1	1		1	1	1
300072	GASKET 70X70X1 MM		1	1	1		1	1	1
48010200	GASKET,0010B/C/D&0016B/C/D	1	1	1	1	1	1	1	1
48023100	GASKET,OIL,SIGHT GLASS	1	1	1	1	1	1	1	1
48027100	GASKET,OIL,SIGHT GLASS,27X32X2		1	1	1		1	1	1
48401700	GASKET,RING		4	4	4		4	4	4
48403400	GASKET,RING		1	1	1		1	1	1
48402900	GASKET,RING,COPPER		1	1	1		1	1	1
48650500	O'RING,VITON,22 X 2 MM	1	1	1	1	1	1	1	1
48656100	O'RING,VITON,25 X 2 MM		1	1	1		1	1	1
23970436	O'RING,VITON,27 X 2.5 MM		2	2	2		2	2	2
48657600	O'RING,VITON,28X3.5 MM		1	1	1		1	1	1
48652100	O'RING,VITON,55 X 3 MM		1	1	1		1	1	1
48652700	O'RING,VITON,66X2MM		2	2	2		2	2	2
43700100	PIN,TAPER			4	4			4	4
710000010	PLUG,OIL DRAIN,1/2" NYLON	1		1	1	1			
71071200	RING SUPPORT			2	2			2	2
53405600	SCREEN,INLET			1	1			1	1
48700200	SEAL,SHAFT,VITON		2	2	2		2	2	2
83623	SIGHT GLASS,2060C			1	1				
72457500	VANE,GX,0010B			3	3				
72457300	VANE,GX,0010C/D							3	3

PART NUMBER	ITEM DESCRIPTION	0016B FILTER BFK001	0016B GASKET BGK001	0016B OVERHAUL BMK002	0016B W/FILTERS BMKF002	0016C,D FILTER BFK002	0016C,D GASKET BGK001	0016C,D OVERHAUL BMK003A	0016C,D W/FILTERS BMKF003A
473103122	BEARING,NEEDLE ROLLER			2	2			2	2
472105768	BEARING,SLEEVE			2	2			2	2
532105216	FILTER,EXHAUST,W/O'RING					1			1
53230001	FILTER,EXHAUST,W/O'RING	1			1				
300070	FLAPPER,BUNA,2MM	1							
48021600	GASKET 56X56X1 MM		1	1	1		1	1	1
300072	GASKET 70X70X1 MM		1	1	1		1	1	1
48010200	GASKET,0010B/C/D&0016B/C/D	1	1	1	1	1	1	1	1
48023100	GASKET,OIL,SIGHT GLASS	1	1	1	1	1	1	1	1
48027100	GASKET,OIL,SIGHT GLASS,27X32X2		1	1	1		1	1	1
48401700	GASKET,RING		4	4	4		4	4	4
48403400	GASKET,RING		1	1	1		1	1	1
48402900	GASKET,RING,COPPER		1	1	1		1	1	1
48650500	O'RING,VITON,22 X 2 MM	1	1	1	1	1	1	1	1
48656100	O'RING,VITON,25 X 2 MM		1	1	1		1	1	1
23970436	O'RING,VITON,27 X 2.5 MM		2	2	2		2	2	2
48657600	O'RING,VITON,28X3.5 MM		1	1	1		1	1	1
48652100	O'RING,VITON,55 X 3 MM		1	1	1		1	1	1
48652700	O'RING,VITON,66X2MM		2	2	2		2	2	2
43700100	PIN,TAPER			4	4			4	4
710000010	PLUG,OIL DRAIN,1/2" NYLON	1		1	1	1			
71071200	RING SUPPORT			2	2			2	2
53405600	SCREEN,INLET			1	1			1	1
48700200	SEAL,SHAFT,VITON		2	2	2		2	2	2
83623	SIGHT GLASS,2060C			1	1				
72457600	VANE,GX,0016B			3	3				
72457400	VANE,GX,0016C/D							3	3

### KIT COMPONENTS

PART NUMBER	ITEM DESCRIPTION	0012B & 0021B	0012B & 0021B	0012B & 0021B	0012B & 0021B
		FILTER BFK003	GASKET BGK002	OVERHAUL BMK004	W/FILTERS BMKF004
947501331	ASSY,BEARING,TEFLON			2	2
472105768	BEARING,SLEEVE			2	2
53251001	FILTER,EXHAUST,W/O'RING	1			1
48011200	GASKET,CYLINDER	1	1	1	1
48010400	GASKET,EXHAUST		1	1	1
48202000	GASKET,OIL FILL PLUG		1	1	1
48023100	GASKET,OIL,SIGHT GLASS	1	1	1	1
48027100	GASKET,OIL,SIGHT GLASS,27X32X2		1	1	1
48401700	GASKET,RING		1	1	1
48403400	GASKET,RING		1	1	1
48405600	GASKET,RING,COPPER		1		1
48650500	O'RING,VITON,22 X 2 MM	1	1	1	1
48656100	O'RING,VITON,25 X 2 MM		1	1	1
48651200	O'RING,VITON,35 X 4 MM		1	1	1
48652100	O'RING,VITON,55 X 3 MM		1	1	1
48663500	O'RING,VITON,56 X 2.5 MM		1	1	1
48656400	O'RING,VITON,72 X 2.5 MM		2	2	2
550045	OIL SIGHT GLASS 3/4" BSP	1	1	1	1
43700100	PIN,TAPER			4	4
710000010	PLUG,OIL DRAIN,1/2" NYLON	1	1	1	1
71071000	RING,SUPPORT			2	2
53405600	SCREEN,INLET			1	1
484130591	SEAL,DOWTY,VITON,27X35X2.3MM		1	1	1
48700200	SEAL,SHAFT,VITON		2	2	2
53701700	STRAINER,BAFFLE	1			
53702300	STRAINER,BAFFLE		1	1	1
71030100	VANE,GX,1ST STAGE,RHO			3	3

## KITS

KIT BILL OF MATERIALS CAN BE FOUND LISTED ON THE 'KIT COMPONENTS' PAGES IMMEDIATELY FOLLOWING CORRESPONDING PUMP PAGES.

### FILTER KITS

FILTER KITS INCLUDE EXHAUST FILTER ELEMENTS, OIL FILTER, O-RINGS, OIL DRAIN PLUG GASKET & STRAINER BAFFLE AS REQUIRED.

MODEL(S)		PART NUMBER
0025/0040 B	(OEM EQU. 993.134.02)	BFK004
0025/0040 C/E/F	(OEM EQU. 0993.900.245)	BFK005

### GASKET KITS

GASKET KITS INCLUDE O-RINGS, GASKETS & SHAFT SEALS FOR MINOR MAINTENANCE.

MODEL(S)		PART NUMBER
0025/0040 B	(OEM EQU. 990.061.02)	BGK003B
0025/0040 C/E	(OEM EQU. 0990.990.248)	BGK003
0025/0040 F	(OEM EQU. 0990-101-464)	BSK001

### OVERHAUL KITS

OVERHAUL KITS INCLUDE ALL COMPONENTS OF GASKET KITS PLUS BEARING SLEEVES & VANES FOR MAJOR OVERHAUL.

MODEL(S)		PART NUMBER
0025 B	(OEM EQU. 993.138.02)	BMK005
0025 C/E	(OEM EQU. 0993.900.246)	BMK007
0040 B	(OEM EQU. 993.168.02)	BMK006
0040 C/E	(OEM EQU. 0993.900.247)	BMK008

### OVERHAUL KITS w/EXHAUST FILTERS

OVERHAUL KITS W/EXHAUST FILTERS INCLUDE ALL COMPONENTS OF OVERHAUL KITS PLUS EXHAUST FILTER, OIL FILTER & STRAINER BAFFLE AS REQUIRED.

**NOTE:** KITS SOLD IN EUROPE CONTAIN EXHAUST FILTERS WITH DAMPERS WHERE APPROPRIATE.

MODEL(S)		PART NUMBER
0025 B		BMKF005
0025 C/E		BMKF007
0025 F	(OEM EQU. 0993.143.209)	BMKF007A
0040 B		BMKF006
0040 C/E		BMKF008
0040 F	(OEM EQU. 0993.143.318)	BMKF008A

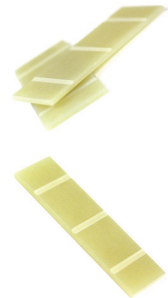


## FEATURED SPARES

ALL AVAILABLE SPARES FOR THIS SERIES CAN BE FOUND LISTED ON THE 'INDIVIDUAL SPARES' PAGES AT THE END OF THIS SECTION.

### VANES

MODEL(S)		PART NUMBER
0025 B/C/E/F	(REQ. 3)	72227000
0040 B/C/E/F	(REQ. 3)	72230000



### OIL FILTERS

MODEL(S)		PART NUMBER
ALL	(REQ. 1)	53100200



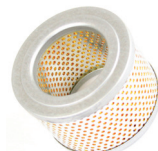
### EXHAUST FILTERS

MODEL(S)		PART NUMBER
0025/0040 B	(REQ. 1)	53230201
0025/0040 B	(REQ. 1 W/DAMP)	532917477
0025/0040 C/E/F	(REQ. 1)	53251201



### INLET FILTERS

MODEL(S)		PART NUMBER
ALL	(REQ. 1)	53200500



### RECOMMENDED OILS

TYPE		PART NUMBER
PLUS 530 (1L/1.06QT) GENERAL PURPOSE		530-001
PLUS 570 (1L/1.06QT) FULLY SYNTHETIC		570001



### KIT COMPONENTS

PART NUMBER	ITEM DESCRIPTION	0025B FILTER BFK004	0025B GASKET BGK003B	0025B OVERHAUL BMK005	0025B W/FILTERS BMKF005	0025C,E FILTER BFK005	0025C,E GASKET BGK003	0025C,E OVERHAUL BMK007	0025C,E W/FILTERS BMKF007
47300300	BEARING,NEEDLE,RNA4904			2	2			2	2
47201500	BEARING,SLEEVE 20X25X38.5							2	2
53230201	FILTER,EXHAUST,W/O'RING	1			1				
53251201	FILTER,EXHAUST,W/SILENCER					1			1
53100200	FILTER,OIL	1			1	1			1
48015300	GASKET						2	2	2
48011200	GASKET,CYLINDER					1	1	1	1
480000150	GASKET,CYLINDER/EXH. BOX						1	1	1
48010500	GASKET,EXHAUST	1	1	1	1				
48202000	GASKET,OIL FILL PLUG		1	1	1				
48023100	GASKET,OIL, SIGHT GLASS	1	1	1	1		1	1	1
48401700	GASKET,RING		3	3	3		3	3	3
48403400	GASKET,RING		2	2	2		2	1	1
48406200	GASKET,RING		1	1	1				
48402900	GASKET,RING,COPPER		2	2	2		2	2	2
42000500	NUT,HEX,M6			2	2			2	2
486114368	O'RING,SERVICE BLOCK,VITON,SPECIAL						1	1	1
48653700	O'RING,VITON,108 X 3 MM		2	2	2		2	2	2
48650500	O'RING,VITON,22 X 2 MM	1	1	1	1	1	1	1	1
48651200	O'RING,VITON,35 X 4 MM		1	1	1	1	1	1	1
48655900	O'RING,VITON,44 X 3 MM		1	1	1		1	1	1
48651600	O'RING,VITON,45 X 2.5 MM		1	1	1				
48652100	O'RING,VITON,55 X 3 MM		3	3	3				
48652600	O'RING,VITON,65 X 3 MM		2	2	2		2	2	2
43707000	PIN,TAPER,THREADED,M6X40MM			4	4			4	4
710000010	PLUG,OIL DRAIN,1/2" NYLON	1	1	1	1	1	1	1	1
432107575	RING,RETAINER,ZA18							1	1
43236700	RING,RETAINING			1	1			1	1
433000309	RING,TOLERANCE,AN 18X10							1	1
53400900	SCREEN,INLET		1	1	1				
53401800	SCREEN,INLET,CONICAL			1	1			1	1
484130591	SEAL,DOWTY,VITON,27X35X2.3MM					1	1	1	1
48700500	SEAL,SHAFT,VITON		2	2	2		2	2	2
83623	SIGHT GLASS,2060C		1	1	1	1	1	1	1
47200400	SLEEVE BEARING,20X25X26.5			2	2				
53701400	STRAINER,BAFFLE	1			1			1	1
916126769	VALVE,EXHAUST,PLASTIC,VITON							2	2
72227000	VANE,GX,1ST STAGE,0025			3	3			3	3



### KIT COMPONENTS

PART NUMBER	ITEM DESCRIPTION	0025F GASKET BSK001	0025F W/FILTERS BMKF007A	0040F W/FILTERS BMKF008A
47300300	BEARING,NEEDLE,RNA4904		2	2
47201500	BEARING,SLEEVE 20X25X38.5		2	2
53251201	FILTER,EXHAUST,W/SILENCER		1	1
53100200	FILTER,OIL		1	1
48015300	GASKET	2	2	2
480109793	GASKET,31X27X0.8	1	1	1
48011200	GASKET,CYLINDER	1	1	1
480000150	GASKET,CYLINDER/EXH. BOX	1	1	1
48202000	GASKET,OIL FILL PLUG	1	1	1
48027100	GASKET,OIL,SIGHT GLASS,27X32X2	1	1	1
48401700	GASKET,RING	2	2	2
48403400	GASKET,RING	2	2	2
48402900	GASKET,RING,COPPER	3	3	3
51200300	INSERT,DRIVE,COUPLING		1	1
73400300	MEMBRANE,EXHAUST SILENCER,88X88X3 MM	1	1	1
486114368	O'RING,SERVICE BLOCK,VITON,SPECIAL	1	1	1
48653700	O'RING,VITON,108 X 3 MM	2	2	2
48650500	O'RING,VITON,22 X 2 MM	1	1	1
48656100	O'RING,VITON,25 X 2 MM	1	1	1
23970436	O'RING,VITON,27 X 2.5 MM	1	1	1
48651200	O'RING,VITON,35 X 4 MM	1	1	1
48655900	O'RING,VITON,44 X 3 MM	1	1	1
48652600	O'RING,VITON,65 X 3 MM	2	2	2
48700500	SEAL,SHAFT,VITON	2		
43707000	PIN,TAPER,THREADED,M6X40MM		4	4
710000010	PLUG,OIL DRAIN,1/2" NYLON		1	1
710000009	PLUG,OIL FILL,PLASTIC,G 3/4		1	1
43236700	RING,RETAINING		1	1
48700500	SEAL,SHAFT,VITON		2	2
916126769	VALVE,EXHAUST,PLASTIC,VITON		2	2
916139772	VALVE,RETURN,OIL,0025F-0100F		1	1
72227000	VANE,GX,1ST STAGE,0025		3	
72230000	VANE,GX,1ST STAGE,0040			3

### KIT COMPONENTS

PART NUMBER	ITEM DESCRIPTION	0040B FILTER BFK004	0040B GASKET BGK003B	0040B OVERHAUL BMK006	0040B W/FILTERS BMKF006	0040C,E FILTER BFK005	0040C,E GASKET BGK003	0040C,E OVERHAUL BMK008	0040C,E W/FILTERS BMKF008
47300300	BEARING, NEEDLE, RNA4904			2	2			2	2
47201500	BEARING, SLEEVE 20X25X38.5							2	2
53230201	FILTER, EXHAUST, W/O'RING	1			1				
53251201	FILTER, EXHAUST, W/SILENCER					1			1
53100200	FILTER, OIL	1			1	1			1
48015300	GASKET						2	2	2
48011200	GASKET, CYLINDER					1	1	1	1
480000150	GASKET, CYLINDER/EXH. BOX						1	1	1
48010500	GASKET, EXHAUST	1	1	1	1				
48202000	GASKET, OIL FILL PLUG		1	1	1				
48023100	GASKET, OIL, SIGHT GLASS	1	1	1	1		1	1	1
48401700	GASKET, RING		3	3	3		3	3	3
48403400	GASKET, RING		2	2	2		2	1	1
48406200	GASKET, RING		1	1	1				
48402900	GASKET, RING, COPPER		2	2	2		2	2	2
42000500	NUT, HEX, M6			2	2			2	2
486114368	O'RING, SERVICE BLOCK, VITON, SPECIAL						1	1	1
48653700	O'RING, VITON, 108 X 3 MM		2	2	2		2	2	2
48650500	O'RING, VITON, 22 X 2 MM	1	1	1	1	1	1	1	1
48651200	O'RING, VITON, 35 X 4 MM		1	1	1	1	1	1	1
48655900	O'RING, VITON, 44 X 3 MM		1	1	1		1	1	1
48651600	O'RING, VITON, 45 X 2.5 MM		1	1	1				
48652100	O'RING, VITON, 55 X 3 MM		3	3	3				
48652600	O'RING, VITON, 65 X 3 MM		2	2	2		2	2	2
43707000	PIN, TAPER, THREADED, M6X40MM			4	4			4	4
710000010	PLUG, OIL DRAIN, 1/2" NYLON	1	1	1	1	1	1	1	1
432107575	RING, RETAINER, ZA18							1	1
43236700	RING, RETAINING			1	1			1	1
433000309	RING, TOLERANCE, AN 18X10							1	1
53400900	SCREEN, INLET		1	1	1				1
53401800	SCREEN, INLET, CONICAL			1	1			1	1
484130591	SEAL, DOWTY, VITON, 27X35X2.3MM					1	1	1	1
48700500	SEAL, SHAFT, VITON		2	2	2		2	2	2
83623	SIGHT GLASS, 2060C		1	1	1	1	1	1	1
47200400	SLEEVE BEARING, 20X25X26.5			2	2				
53701400	STRAINER, BAFFLE	1			1				1
916126769	VALVE, EXHAUST, PLASTIC, VITON							2	2
72230000	VANE, GX, 1ST STAGE, 0040			3	3			3	3

### KITS

KIT BILL OF MATERIALS CAN BE FOUND LISTED ON THE 'KIT COMPONENTS' PAGES IMMEDIATELY FOLLOWING CORRESPONDING PUMP PAGES.

#### FILTER KITS

FILTER KITS INCLUDE EXHAUST FILTER ELEMENTS, OIL FILTER, O-RINGS, OIL DRAIN PLUG GASKET & STRAINER BAFFLE AS REQUIRED.

MODEL(S)	PART NUMBER
0063/0100 B	BFK006
0063/0100 C/E/F (OEM EQU. 993.902.118)	BFK007

#### GASKET KITS

GASKET KITS INCLUDE O-RINGS, GASKETS & SHAFT SEALS FOR MINOR MAINTENANCE.

MODEL(S)	PART NUMBER
0063/0100 B (OEM EQU. 990.081.02)	BGK004B
0063/0100 C/E (OEM EQU. 0990.902.115)	BGK004
0063/0100 F (OEM EQU. 0990.106.211)	BSK002

#### OVERHAUL KITS

OVERHAUL KITS INCLUDE ALL COMPONENTS OF GASKET KITS PLUS BEARING SLEEVES & VANES FOR MAJOR OVERHAUL.

MODEL(S)	PART NUMBER
0063 B (OEM EQU. 993.198.02)	BMK010
0063 C/E (OEM EQU. 0993.902.116)	BMK012
0100 B (OEM EQU. 993.228.02)	BMK011
0100 C/E (OEM EQU. 0993.902.117)	BMK013

#### OVERHAUL KITS w/EXHAUST FILTERS

OVERHAUL KITS W/EXHAUST FILTERS INCLUDE ALL COMPONENTS OF OVERHAUL KITS PLUS EXHAUST FILTER(S), OIL FILTER & STRAINER BAFFLE AS REQUIRED.

**NOTE:** KITS SOLD IN EUROPE CONTAIN EXHAUST FILTERS WITH DAMPERS WHERE APPROPRIATE.

MODEL(S)	PART NUMBER
0063 B	BMKF010
0063 C/E	BMKF012
0063 F (OEM EQU. 0993.143.319)	BMKF012A
0100 B	BMKF011
0100 C/E	BMKF013
0100 F (OEM EQU. 0993.143.320)	BMKF013A

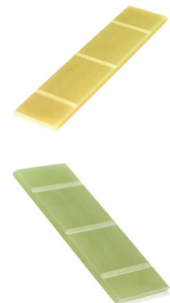


### FEATURED SPARES

ALL AVAILABLE SPARES FOR THIS SERIES CAN BE FOUND LISTED ON THE 'INDIVIDUAL SPARES' PAGES AT THE END OF THIS SECTION.

#### VANES

MODEL(S)	PART NUMBER
0063 B/C/E/F (REQ. 3)	72233000
0100 B/C/E/F (REQ. 3)	72236000



#### OIL FILTERS

MODEL(S)	PART NUMBER
ALL (REQ. 1)	53100200



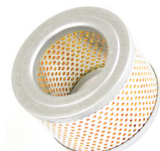
#### EXHAUST FILTERS

MODEL(S)	PART NUMBER
ALL (REQ. 1)	53230201
0063/0100 F (REQ. 2 W/DAMP)	532917477



#### INLET FILTERS

MODEL(S)	PART NUMBER
0063 B/C/E (REQ. 1)	53200200
0100 B/C/E (REQ. 1)	53200300



#### RECOMMENDED OILS

TYPE	PART NUMBER
PLUS 530 (1L/1.06QT) GENERAL PURPOSE	530-001
PLUS 570 (1L/1.06QT) FULLY SYNTHETIC	570001





### KIT COMPONENTS

PART NUMBER	ITEM DESCRIPTION	0063B FILTER BFK006	0063B GASKET BGK004B	0063B OVERHAUL BMK010	0063B W/FILTERS BMKF010	0063C,E FILTER BFK007	0063C,E GASKET BGK004	0063C,E OVERHAUL BMK012	0063C,E W/FILTERS BMKF012
47300400	BEARING,NEEDLE,RNA4905			2	2			2	2
820048	BOX,WHITE,14.5 X 10.5 X 2.5"					1			
53230201	FILTER,EXHAUST,W/O'RING	2			2	2			2
53100200	FILTER,OIL	1			1	1			1
480108718	GASKET						1	1	1
48015000	GASKET						1	1	1
48015300	GASKET						1	1	1
48221000	GASKET,40X33X2		1					1	1
48011200	GASKET,CYLINDER	2		2	2	2	2	2	2
480000150	GASKET,CYLINDER/EXH. BOX						1	1	1
48010500	GASKET,EXHAUST		1	1	1				
48011500	GASKET,EXHAUST	1	1	1	1				
48202100	GASKET,OIL FILL PLUG			1	1				
48023100	GASKET,OIL,SIGHT GLASS	1	1	1	1		1	1	1
48401400	GASKET,RING		8	8	8				
48401700	GASKET,RING		3	3	3		3	3	3
48403400	GASKET,RING		2	2	2		1	1	1
48402900	GASKET,RING,COPPER		2	2	2		2	2	2
48406700	GASKET,RING,COPPER		1	1	1				
42000500	NUT,HEX,M6			2	2				
42000700	NUT,HEX,M8							2	2
48653900	O'RING,VITON,128 X 3 MM		2	2	2		2	2	2
48650500	O'RING,VITON,22 X 2 MM	1	1	1	1	1	1	1	1
48651200	O'RING,VITON,35 X 4 MM		2	2	2	2	2	2	2
48655900	O'RING,VITON,44 X 3 MM		1	1	1		1	1	1
48651600	O'RING,VITON,45 X 2.5 MM		1	1	1				
48652100	O'RING,VITON,55 X 3 MM		2	2	2				
48652600	O'RING,VITON,65 X 3 MM		2	2	2		2	2	2
43707000	PIN,TAPER,THREADED,M6X40MM			4	4				
437000074	PIN,TAPER,THREADED,M8X50MM,DIN 79							4	4
710000010	PLUG,OIL DRAIN,1/2" NYLON	2	1	1	1	1	1	1	1
43238000	RING,RETAINING			1	1			1	1
53400900	SCREEN,INLET		1	1	1				
53401800	SCREEN,INLET,CONICAL			1	1			1	1
484130591	SEAL,DOWTY,VITON,27X35X2.3MM	1		1	1	1	1		
48700800	SEAL,SHAFT,VITON,30X42X6		2	2	2		2	2	2
83623	SIGHT GLASS,2060C	1	1	1	1	1	1	1	1
47200600	SLEEVE,BEARING,25X30X26.5			2	2				
472105822	SLEEVE,BEARING,25X30X38.5							2	2
53701500	STRAINER,BAFFLE	1			1	1			1
916126769	VALVE,EXHAUST,PLASTIC,VITON							2	2
73001800	VALVE,INLET BALL,VITON			1					
72233000	VANE,GX,1ST STAGE,0063			3	3			3	3

### KIT COMPONENTS

PART NUMBER	ITEM DESCRIPTION	0063F,0100F	0063F	0100F
		GASKET BSK002	W/FILTERS BMKF012A	W/FILTERS BMKF013A
473103123	BEARING,NEEDLE		2	2
532917477	FILTER, EXHAUST, SILENCER, W/O-RING 9.9		2	2
53100200	FILTER,OIL		1	1
48015000	GASKET	1	1	1
48015300	GASKET	1	1	1
480109793	GASKET,31X27X0.8	1	1	1
48011200	GASKET,CYLINDER	2	2	2
480000150	GASKET,CYLINDER/EXH. BOX	1	1	1
48202000	GASKET,OIL FILL PLUG	1	1	1
48027100	GASKET,OIL,SIGHT GLASS,27X32X2	1	1	1
48401700	GASKET,RING	2	2	2
48403400	GASKET,RING	2	2	2
48402900	GASKET,RING,COPPER	3	3	3
51200400	INSERT,DRIVE COUPLING		1	1
73400300	MEMBRANE,EXHAUST SILENCER,88X88X3 MM	2	2	2
486114368	O'RING,SERVICE BLOCK,VITON,SPECIAL	1	1	1
48653900	O'RING,VITON,128 X 3 MM	2	2	2
48650500	O'RING,VITON,22 X 2 MM	1	1	1
48656100	O'RING,VITON,25 X 2 MM	1	1	1
23970436	O'RING,VITON,27 X 2.5 MM	1	1	1
48651200	O'RING,VITON,35 X 4 MM	2	2	2
48655900	O'RING,VITON,44 X 3 MM	1	1	1
48652600	O'RING,VITON,65 X 3 MM	2	2	2
437104545	PIN,TAPER,THREADED,8X40,DIN 7977		4	
437000074	PIN,TAPER,THREADED,M8X50MM,DIN 7977			4
710000010	PLUG,OIL DRAIN,1/2" NYLON		1	1
710000009	PLUG,OIL FILL,PLASTIC,G 3/4		1	1
43238000	RING,RETAINING		1	1
48700800	SEAL,SHAFT,VITON,30X42X6	2	2	2
472105822	SLEEVE,BEARING,25X30X38.5		2	2
916126769	VALVE,EXHAUST,PLASTIC,VITON		2	2
916139772	VALVE,RETURN,OIL,0025F-0100F		1	1
72233000	VANE,GX,1ST STAGE,0063		3	
72236000	VANE,GX,1ST STAGE,0100			3

### KIT COMPONENTS

PART NUMBER	ITEM DESCRIPTION	0100B FILTER BFK006	0100B GASKET BGK004B	0100B OVERHAUL BMK011	0100B W/FILTERS BMKF011	0100C,E FILTER BFK007	0100C,E GASKET BGK004	0100C,E OVERHAUL BMK013	0100C,E W/FILTERS BMKF013
47300400	BEARING,NEEDLE,RNA4905			2	2			2	2
820048	BOX,WHITE,14.5 X 10.5 X 2.5"					1			
53230201	FILTER,EXHAUST,W/O'RING	2			2	2			2
53100200	FILTER,OIL	1			1	1			1
480108718	GASKET						1	1	1
48015000	GASKET						1	1	1
48015300	GASKET						1	1	1
48221000	GASKET,40X33X2		1					1	1
48011200	GASKET,CYLINDER	2		2	2	2	2	2	2
480000150	GASKET,CYLINDER/EXH. BOX						1	1	1
48010500	GASKET,EXHAUST		1	1	1				
48011500	GASKET,EXHAUST	1	1	1	1				
48202100	GASKET,OIL FILL PLUG			1	1				
48023100	GASKET,OIL,SIGHT GLASS	1	1	1	1		1	1	1
48401400	GASKET,RING		8	8	8				
48401700	GASKET,RING		3	3	3		3	3	3
48403400	GASKET,RING		2	2	2		1	1	1
48402900	GASKET,RING,COPPER		2	2	2		2	2	2
48406700	GASKET,RING,COPPER		1	1	1				
42000500	NUT,HEX,M6			2	2				
42000700	NUT,HEX,M8			2	2			2	2
48653900	O'RING,VITON,128 X 3 MM		2	2	2		2	2	2
48650500	O'RING,VITON,22 X 2 MM	1	1	1	1	1	1	1	1
48651200	O'RING,VITON,35 X 4 MM		2	2	2	2	2	2	2
48655900	O'RING,VITON,44 X 3 MM		1	1	1		1	1	1
48651600	O'RING,VITON,45 X 2.5 MM		1	1	1				
48652100	O'RING,VITON,55 X 3 MM		2	2	2				
48652600	O'RING,VITON,65 X 3 MM		2	2	2		2	2	2
43707300	PIN,TAPER,THREADED			4	4				
43707000	PIN,TAPER,THREADED,M6X40MM			4	4				
437000074	PIN,TAPER,THREADED,M8X50MM,DIN 7977							4	4
710000010	PLUG,OIL DRAIN,1/2" NYLON	2	1	1	1	1	1	1	1
43238000	RING,RETAINING			1	1			1	1
53400900	SCREEN,INLET		1	1	1				
53401800	SCREEN,INLET,CONICAL			1	1			1	1
484130591	SEAL,DOWTY,VITON,27X35X2.3MM	1		1	1	1	1	1	1
48700800	SEAL,SHAFT,VITON,30X42X6		2	2	2		2	2	2
83623	SIGHT GLASS,2060C	1	1	1	1	1	1	1	1
47200600	SLEEVE,BEARING,25X30X26.5			2	2				
472105822	SLEEVE,BEARING,25X30X38.5							2	2
53701500	STRAINER,BAFFLE	1			1	1			1
916126769	VALVE,EXHAUST,PLASTIC,VITON							2	2
72236000	VANE,GX,1ST STAGE,0100			3	3			3	3

### KITS

KIT BILL OF MATERIALS CAN BE FOUND LISTED ON THE 'KIT COMPONENTS' PAGES IMMEDIATELY FOLLOWING CORRESPONDING PUMP PAGES.

#### FILTER KITS

FILTER KITS INCLUDE EXHAUST FILTER ELEMENTS, OIL FILTER, O-RINGS, OIL DRAIN PLUG GASKET & STRAINER BAFFLE AS REQUIRED.

MODEL(S)	PART NUMBER
0160/0202 D	BFK011
0250 C/D, 0302 D (OEM EQU. 0993.900.557)	BFK012

#### GASKET KITS

GASKET KITS INCLUDE O-RINGS, GASKETS & SHAFT SEALS FOR MINOR MAINTENANCE.

MODEL(S)	PART NUMBER
0160/0202 D	BGK006
0250 C/D, 0302 D (OEM EQU. 0990.900.559)	BGK009

#### OVERHAUL KITS

OVERHAUL KITS INCLUDE ALL COMPONENTS OF GASKET KITS PLUS BEARING SLEEVES & VANES FOR MAJOR OVERHAUL.

MODEL(S)	PART NUMBER
0160/0202 D	BMK019
0250 C/D, 0302 D (OEM EQU. 0993.900.558)	BMK020

#### OVERHAUL KITS w/EXHAUST FILTERS

OVERHAUL KITS W/EXHAUST FILTERS INCLUDE ALL COMPONENTS OF OVERHAUL KITS PLUS EXHAUST FILTER, OIL FILTER & STRAINER BAFFLE AS REQUIRED.

MODEL(S)	PART NUMBER
0160/0202 D	BMKF019
0250 C/D, 0302 D	BMKF020



### FEATURED SPARES

ALL AVAILABLE SPARES FOR THIS SERIES CAN BE FOUND LISTED ON THE 'INDIVIDUAL SPARES' PAGES AT THE END OF THIS SECTION.

#### VANES

MODEL(S)	PART NUMBER
0160/0202 D (REQ. 3)	722516573
0250 C/D, 0302 D (REQ. 3)	722516729



#### PRESSURE GAUGES

MODEL(S)	PART NUMBER
ALL	54500400



#### OIL FILL CAPS w/PRESSURE GAUGES

MODEL(S)	PART NUMBER
ALL	94610202



#### EXHAUST FILTERS

MODEL(S)	PART NUMBER
ALL (REQ. 3)	53208201



#### INLET FILTERS

MODEL(S)	PART NUMBER
ALL (REQ. 1)	53200400



#### OIL FILTERS

MODEL(S)	PART NUMBER
ALL (REQ. 1)	53100100



#### RECOMMENDED OILS

TYPE	PART NUMBER
PLUS 530 (1L/1.06QT) GENERAL PURPOSE	530-001
PLUS 570 (1L/1.06QT) FULLY SYNTHETIC	570001



### KIT COMPONENTS

PART NUMBER	ITEM DESCRIPTION	0160D&0202D	0160D&0202D	0160D&0202D	0160D&0202D
		FILTER BFK011	GASKET BGK006	OVERHAUL BMK019	W/FILTERS BMKF019
47300500	BEARING,NEEDLE			2	2
47200800	BEARING,SLEEVE,30X35X46			2	2
720014	FILTER PAD,12" X 12"	1		1	1
53208201	FILTER,EXHAUST,W/O'RING	3			3
53100100	FILTER,OIL	1		1	1
481502720	GASKET		1	1	1
481503784	GASKET		1		
481503785	GASKET		1		
481503786	GASKET		1		
481516780	GASKET		1	1	1
481502721	GASKET,BOX,EXHAUST		1	1	1
481502719	GASKET,COVER PLATE,SIDE	1	2	1	1
481516781	GASKET,CYLINDER TO EXHAUST BOX			1	1
48202100	GASKET,OIL FILL PLUG		1	1	1
48210600	GASKET,OIL FILL PLUG		1	1	1
48023100	GASKET,OIL,SIGHT GLASS	2	2	2	2
48403400	GASKET,RING		1	1	1
48404000	GASKET,RING		1	1	1
48202300	GASKET,RING,47X55X2	1			
48402900	GASKET,RING,COPPER		1	1	1
42000500	NUT,HEX,M6			2	2
486516620	O'RING,VITON 34 X 3 MM		2	2	2
48206600-330MM	O'RING,SILICONE,330MM LONG		1	1	
48658700	O'RING,VITON,16.2 X 3MM		4	4	4
48654300	O'RING,VITON,186 X 3.5 MM		2	2	2
48650500	O'RING,VITON,22 X 2 MM	1	1	1	1
923031	O'RING,VITON,42 X 2 MM	4		4	4
48652100	O'RING,VITON,55 X 3 MM		1	1	1
48652600	O'RING,VITON,65 X 3 MM		1	1	1
48653100	O'RING,VITON,87 X 3 MM		2	2	2
43707100	PIN,TAPER,THREADED			4	4
43707300	PIN,TAPER,THREADED			4	4
710000010	PLUG,OIL DRAIN,1/2" NYLON	1	1	1	1
48206600	RING,GASKET				1
71212503	SEAL,FLOAT VAL.SV40/65/100/180		1	1	1
48701200	SEAL,SHAFT,VITON		4	4	4
83623	SIGHT GLASS,2060C			1	1
722516573	VANE,GX,0160D,0165D,0205D			3	3
47200600	SLEEVE,BEARING,25X30X26.5			2	2
472105822	SLEEVE,BEARING,25X30X38.5				
53701500	STRAINER,BAFFLE	1			1
916126769	VALVE,EXHAUST,PLASTIC,VITON				
72236000	VANE,GX,1ST STAGE,0100			3	3



### KIT COMPONENTS

PART NUMBER	ITEM DESCRIPTION	0250C,D&0302D	0250C,D&0302D	0250C,D&0302D	0250C,D&0302D
		FILTER BFK012	GASKET BGK009	OVERHAUL BMK020	W/FILTERS BMKF020
47300500	BEARING,NEEDLE			2	2
47200800	BEARING,SLEEVE,30X35X46			2	2
53208201	FILTER,EXHAUST,W/O'RING	3			3
53100100	FILTER,OIL	1			1
481502720	GASKET		1	1	1
481502721	GASKET,BOX,EXHAUST	1	1	1	1
481502719	GASKET,COVER PLATE,SIDE	2	2	2	2
481516781	GASKET,CYLINDER TO EXHAUST BOX		1	1	1
48023100	GASKET,OIL,SIGHT GLASS	2	2	1	1
48403400	GASKET,RING		1	1	1
48402900	GASKET,RING,COPPER		1	1	1
482901835	GASKET,SEAL,VITON,VST 1 R 1/4		1	1	1
48206600-660MM	O'RING,SILICONE,660MM LONG		1	1	1
48658700	O'RING,VITON,16.2 X 3MM		4	4	4
48654300	O'RING,VITON,186 X 3.5 MM		2	2	2
48650500	O'RING,VITON,22 X 2 MM	1	1	1	1
48651200	O'RING,VITON,35 X 4 MM		3	3	3
48652600	O'RING,VITON,65 X 3 MM		1	1	1
486516620	O'RING,34 X 3 MM			1	1
48653100	O'RING,VITON,87 X 3 MM		2	2	2
437502718	PIN,TAPER,INTERNAL THREAD			4	4
710000010	PLUG,OIL DRAIN,1/2" NYLON	1	1	1	1
484000233	SEAL,DOWTY,VITON		1	1	1
48701200	SEAL,SHAFT,VITON		4	4	4
71212503	SEAL, FLOAT VAL.			1	1
83623	SIGHT GLASS,2060C		1	1	1
53703300	STRAINER,BAFFLE	1			1
53705100	STRAINER,BAFFLE	1			1
916529297	VALVE,EXHAUST,PLASTIC,W/GASKETS			3	3
722516729	VANE,GX,250CD,0255D,0302D,0305D			3	3

### KITS

KIT BILL OF MATERIALS CAN BE FOUND LISTED ON THE 'KIT COMPONENTS' PAGES IMMEDIATELY FOLLOWING CORRESPONDING PUMP PAGES.

#### FILTER KITS

FILTER KITS INCLUDE EXHAUST FILTER ELEMENTS, OIL FILTER, O-RINGS, OIL DRAIN PLUG GASKET & STRAINER BAFFLE AS REQUIRED.

MODEL(S)		PART NUMBER
0160/0250 B	(OEM EQU. 0993.900.556)	BFK008
0165-0305 D	(OEM EQU. 0993.908.853)	BFK010

#### GASKET KITS

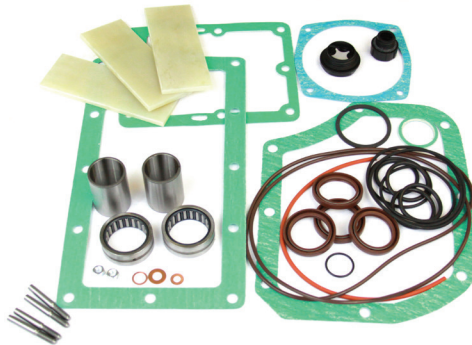
GASKET KITS INCLUDE O-RINGS, GASKETS & SHAFT SEALS FOR MINOR MAINTENANCE.

MODEL(S)		PART NUMBER
0160/0250 B	(OEM EQU. 990.111.02)	BGK005
0165/0205 D	(OEM EQU. 0990.908.851)	BGK008
0255/0305 D	(OEM EQU. 0990.908.867)	BGK008

#### OVERHAUL KITS

OVERHAUL KITS INCLUDE ALL COMPONENTS OF GASKET KITS PLUS BEARING SLEEVES & VANES FOR MAJOR OVERHAUL.

MODEL(S)		PART NUMBER
0160 B	(OEM EQU. 993.045.01)	BMK014
0250 B	(OEM EQU. 993.046.01)	BMK015
0165/0205 D	(OEM EQU. 0993.908.852)	BMK017
0255/0305 D	(OEM EQU. 0993.908.868)	BMK018



#### OVERHAUL KITS w/EXHAUST FILTERS

OVERHAUL KITS W/EXHAUST FILTERS INCLUDE ALL COMPONENTS OF OVERHAUL KITS PLUS EXHAUST FILTER, OIL FILTER & STRAINER BAFFLE AS REQUIRED.

MODEL(S)		PART NUMBER
0160 B		BMKF014
0250 B		BMKF015
0165/0205 D		BMKF017
0255/0305 D		BMKF018

### FEATURED SPARES

ALL AVAILABLE SPARES FOR THIS SERIES CAN BE FOUND LISTED ON THE 'INDIVIDUAL SPARES' PAGES AT THE END OF THIS SECTION.

#### VANES

MODEL(S)		PART NUMBER
0160 B	(REQ. 3)	72245200
0250 B	(REQ. 3)	722516729
0165/0205 D	(REQ. 3)	722516573
0255/0305 D	(REQ. 3)	722516729



#### PRESSURE GAUGES

MODEL(S)		PART NUMBER
ALL		54500400



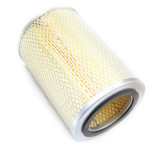
#### OIL FILL CAPS w/PRESSURE GAUGES

MODEL(S)		PART NUMBER
ALL		94610202



#### EXHAUST FILTERS

MODEL(S)		PART NUMBER
ALL	(REQ. 4)	53208201



#### INLET FILTERS

MODEL(S)		PART NUMBER
ALL	(REQ. 1)	53200400



#### OIL FILTERS

MODEL(S)		PART NUMBER
ALL	(REQ. 1)	53100100



#### RECOMMENDED OILS

TYPE		PART NUMBER
PLUS 530 (1L/1.06QT) GENERAL PURPOSE		530-001
PLUS 570 (1L/1.06QT)		570001



### KIT COMPONENTS

PART NUMBER	ITEM DESCRIPTION	0160B,0250B	0160B,0250B	0160B	0160B	0250B	0250B
		FILTER BFK008	GASKET BGK005	OVERHAUL BMK014	W/FILTERS BMKF014	OVERHAUL BMK015	W/FILTERS BMKF015
47300500	BEARING,NEEDLE			2	2	2	2
47200800	BEARING,SLEEVE,30X35X46			2	2	2	2
53208201	FILTER,EXHAUST,W/O'RING	4			4		4
53100100	FILTER,OIL	1			1		1
48012300	GASKET,0160,0250		1	1	1	1	1
48012400	GASKET,0160,0250	1	1	1	1	1	1
48014300	GASKET,COVER PLATE	1	1	1	1	1	1
48010800	GASKET,CYLINDER/EXHAUST BOX		1	1	1	1	1
48210600	GASKET,OIL FILL PLUG		1	1	1	1	1
48023100	GASKET,OIL,SIGHT GLASS	1	1	1	1	1	1
48403400	GASKET,RING		1	1	1	1	1
48404000	GASKET,RING		1	1	1	1	1
48402900	GASKET,RING,COPPER		1	1	1	1	1
42000500	NUT,HEX,M6			2	2	2	2
482525646-330MM	O'RING,SILICONE,4MM,330MM LONG		1	1	1	1	1
48654300	O'RING,VITON,186 X 3.5 MM		2	2	2	2	2
48650500	O'RING,VITON,22 X 2 MM	1	1	1	1	1	1
48651200	O'RING,VITON,35 X 4 MM		4	4	4	4	4
48652100	O'RING,VITON,55 X 3 MM		1	1	1	1	1
48652600	O'RING,VITON,65 X 3 MM		1	1	1	1	1
48653100	O'RING,VITON,87 X 3 MM		2	2	2	2	2
43707100	PIN,TAPER,THREADED			4	4	4	4
710000010	PLUG,OIL DRAIN,1/2" NYLON	1	1	1	1	1	1
48701200	SEAL,SHAFT,VITON		4	4	4	4	4
83623	SIGHT GLASS,2060C			1	1	1	1
53703300	STRAINER,BAFFLE	1			1		1
53705100	STRAINER,BAFFLE	1			1		1
72245200	VANE,GX,1ST STAGE,0160			3	3		
72245300	VANE,GX,1ST STAGE,0250					3	3

PART NUMBER	ITEM DESCRIPTION	0165D-0305D	0165D-0305D	0165D,0205D	0165D,0205D	0255D,0305D	0255D,0305D
		FILTER BFK010	GASKET BGK008	OVERHAUL BMK017	W/FILTERS BMKF017	OVERHAUL BMK018	W/FILTERS BMKF018
537524514	BAFFLE,STRAINER	1			1		1
47300500	BEARING,NEEDLE			2	2	2	2
47200800	BEARING,SLEEVE,30X35X46			2	2	2	2
53208201	FILTER,EXHAUST,W/O'RING	4			4		4
53100100	FILTER,OIL	1			1		1
481516780	GASKET		1	1	1		
48012300	GASKET,0160,0250		1	1	1	1	1
481516781	GASKET,CYLINDER TO EXHAUST BOX		1			1	1
300068	GASKET,EXHAUST COVER,END	1	1	1	1	1	1
300066	GASKET,EXHAUST COVER,FRONT		1	1	1	1	1
300067	GASKET,EXHAUST COVER,SIDE		1	1	1	1	1
481525294	GASKET,OIL FILL,ELBOW		1	1	1	1	1
48023100	GASKET,OIL,SIGHT GLASS	1					
48658700	O'RING,VITON,16.2 X 3MM		4	4	4	4	4
48654300	O'RING,VITON,186 X 3.5 MM		2	2	2	2	2
48650500	O'RING,VITON,22 X 2 MM	1	1	1	1	1	1
79509	O'RING,VITON,28 X 3 MM		1	1	1	1	1
48651200	O'RING,VITON,35 X 4 MM	4	4	4	4	4	4
923031	O'RING,VITON,42 X 2 MM	4	4	4	4	4	4
48652600	O'RING,VITON,65 X 3 MM		1	1	1	1	1
23970149	O'RING,VITON,8 X 2 MM		1	1	1	1	1
48653100	O'RING,VITON,87 X 3 MM		2	2	2	2	2
437502718	PIN,TAPER,INTERNAL THREAD			4	4	4	4
710000010	PLUG,OIL DRAIN,1/2" NYLON	1	1	1	1	1	1
94806600000	RING,SEALING,FIBER,49 X 43 X 1.9MM	1	1	1	1	1	1
484000233	SEAL,DOWTY,VITON		1	1	1	1	1
48701200	SEAL,SHAFT,VITON		4	4	4	4	4
76135	SIGHT GLASS, WINDOW,W/SEAL	1	1	1	1	1	1
916529297	VALVE,EXHAUST,PLASTIC,W/GASKETS			3	3	3	3
722516573	VANE,GX,0160D,0165D,0205D			3	3		
722516729	VANE,GX,250CD,0255D,0302D,0305D					3	3

### KITS

KIT BILL OF MATERIALS CAN BE FOUND LISTED ON THE 'KIT COMPONENTS' PAGES IMMEDIATELY FOLLOWING CORRESPONDING PUMP PAGES.

#### FILTER KITS

FILTER KITS INCLUDE EXHAUST FILTER ELEMENTS, OIL FILTER, O-RINGS, OIL DRAIN PLUG GASKET & STRAINER BAFFLE AS REQUIRED.

MODEL(S)		PART NUMBER
ALL	(OEM EQU. 993.316.02)	BFK013

#### GASKET KITS

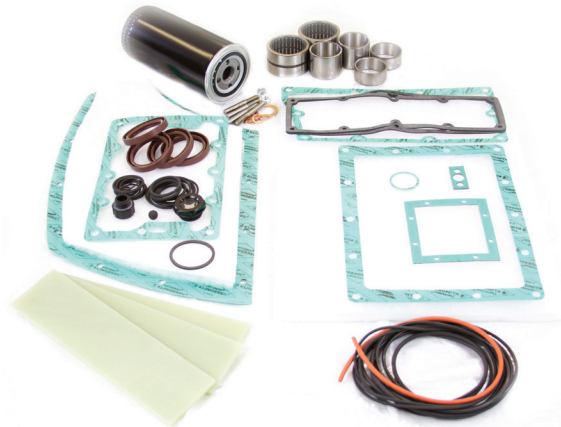
GASKET KITS INCLUDE O-RINGS, GASKETS & SHAFT SEALS FOR MINOR MAINTENANCE.

MODEL(S)		PART NUMBER
ALL	(OEM EQU. 990.140.02)	BGK010

#### OVERHAUL KITS

OVERHAUL KITS INCLUDE ALL COMPONENTS OF GASKET KITS PLUS BEARING SLEEVES & VANES FOR MAJOR OVERHAUL.

MODEL(S)		PART NUMBER
0400 B	(OEM EQU. 993.047.01)	BMK021
0502 B	(OEM EQU. 0993.912.855)	BMK022
0630 B	(OEM EQU. 993.048.01)	BMK023



#### OVERHAUL KITS w/EXHAUST FILTERS

OVERHAUL KITS W/EXHAUST FILTERS INCLUDE ALL COMPONENTS OF OVERHAUL KITS PLUS EXHAUST FILTER, OIL FILTER & STRAINER BAFFLE AS REQUIRED.

**NOTE:** KITS SOLD IN EUROPE CONTAIN EXHAUST FILTERS WITH DAMPERS WHERE APPROPRIATE.

MODEL(S)		PART NUMBER
0400 B		BMKF021
0502 B		BMKF022
0630 B		BMKF023

### FEATURED SPARES

ALL AVAILABLE SPARES FOR THIS SERIES CAN BE FOUND LISTED ON THE 'INDIVIDUAL SPARES' PAGES AT THE END OF THIS SECTION.

#### VANES

MODEL(S)		PART NUMBER
0400 B	(REQ. 3)	72245400
0502 B	(REQ. 3)	722516054
0630 B	(REQ. 3)	72245500



#### EXHAUST FILTERS

MODEL(S)		PART NUMBER
ALL	(REQ. 8)	53230401
ALL	(REQ. 8 W/DAMP)	532917864



#### PRESSURE GAUGES

MODEL(S)		PART NUMBER
ALL		54500400



#### OIL FILTERS

MODEL(S)		PART NUMBER
ALL	(REQ. 1)	53100500



#### INLET FILTERS

MODEL(S)		PART NUMBER
ALL	(REQ. 1)	53200600



#### RECOMMENDED OILS

TYPE		PART NUMBER
PLUS 568 (1L/1.06QT) GENERAL PURPOSE		568-001
PLUS GOLD (1L/1.06QT) FULLY SYNTHETIC		PPGOLD001
PLUS 530 (1L/1.06QT) USDA H-2 GENERAL PURPOSE		530-001
PLUS 570 (1L/1.06QT) USDA H-2 FULLY SYNTHETIC		570001





### KIT COMPONENTS

PART NUMBER	ITEM DESCRIPTION	ALL	ALL	0400B	0502B	0630B	0400B	0502B	0630B
		FILTER BFK013	GASKET BGK010	OVERHAUL BMK021	OVERHAUL BMK022	OVERHAUL BMK023	W/FILTERS BMKF021	W/FILTERS BMKF022	W/FILTERS BMKF023
47300900	BEARING,NEEDLE,NO SLV. (RACE)			2	2	2	2	2	2
47201100	BEARING,SLEEVE (RACE)			2	2	2	2	2	2
53230401	FILTER,EXHAUST,W/O'RING	8					8	8	8
53100500	FILTER,OIL	1					1	1	1
48012800	GASKET,0400,0630	1	1	1	1	1	1	1	1
481532126	GASKET,COVER,FLOAT VALVE		1	1	1	1	1	1	1
48011100	GASKET,CYL TO EXH BOX,400/630		1	1	1	1	1	1	1
48013100	GASKET,EXH BOX COVER,0400/0630	1	1	1	1	1	1	1	1
481529712	GASKET,FLOAT VALVE		1	1	1	1	1	1	1
480537332	GASKET,OIL COOLER		2	2	2	2	2	2	2
48210600	GASKET,OIL FILL PLUG		1	1	1	1	1	1	1
48023100	GASKET,OIL,SIGHT GLASS	2	1	1	1	1	1	1	1
48403400	GASKET,RING		2	2	2	2	2	2	2
48404000	GASKET,RING		2	2	2	2	2	2	2
48406200	GASKET,RING		1	1	1	1	1	1	1
48402900	GASKET,RING,COPPER		1	1	1	1	1	1	1
48013400	GASKET,SIDE CVR PLT,0400/0630		1	1	1	1	1	1	1
42000700	NUT,HEX,M8			2	2	2	2	2	2
48206600-420MM	O'RING,SILICONE,420MM LONG		1	1	1	1	1	1	1
48656700	O'RING,VITON,140 X 5 MM		2	2	2	2	2	2	2
48650500	O'RING,VITON,22 X 2 MM	1	1	1	1	1	1	1	1
48656100	O'RING,VITON,25 X 2 MM		2	2	2	2	2	2	2
48654900	O'RING,VITON,265 X 4 MM		2	2	2	2	2	2	2
486903988	O'RING,VITON,266.3 X 3.53MM		2	2	2	2	2	2	2
79509	O'RING,VITON,28 X 3 MM		1	1	1	1	1	1	1
48651200	O'RING,VITON,35 X 4 MM		8	8	8	8	8	8	8
48652100	O'RING,VITON,55 X 3 MM		4	4	4	4	4	4	4
23970149	O'RING,VITON,8 X 2 MM		2	2	2	2	2	2	2
48661100	O'RING,VITON,97 X 5 MM		1	1	1	1	1	1	1
43708000	PIN,TAPERED,THREADED			4	4	4	4	4	4
710000010	PLUG,OIL DRAIN,1/2" NYLON	1	1	1	1	1	1	1	1
48703200	SEAL,SHAFT,VITON		4	4	4	4	4	4	4
83623	SIGHT GLASS,2060C	1		1	1	1	1	1	1
47201000	SLEEVE,BEARING,45 X 52 X 22			2	2	2	2	2	2
53703400	STRAINER,BAFFLE	1					1	1	1
53704200	STRAINER,BAFFLE	1					1	1	1
73001800	VALVE,INLET BALL,VITON			1	1	1	1	1	1
72245400	VANE,GX,1ST STAGE,0400			3			3		
722516054	VANE,GX,1ST STAGE,0502B				3			3	
72245500	VANE,GX,1ST STAGE,0630					3			3



### KITS

KIT BILL OF MATERIALS CAN BE FOUND LISTED ON THE 'KIT COMPONENTS' PAGES IMMEDIATELY FOLLOWING CORRESPONDING PUMP PAGES.

#### FILTER KITS

FILTER KITS INCLUDE EXHAUST FILTER ELEMENTS, OIL FILTER, O-RINGS, OIL DRAIN PLUG GASKET & STRAINER BAFFLE AS REQUIRED.

MODEL(S)		PART NUMBER
ALL	(OEM EQU. 993.370.02)	BFK014

#### GASKET KITS

GASKET KITS INCLUDE O-RINGS, GASKETS & SHAFT SEALS FOR MINOR MAINTENANCE.

MODEL(S)		PART NUMBER
ALL	(OEM EQU. 990.506.191)	BGK011

#### OVERHAUL KITS

OVERHAUL KITS INCLUDE ALL COMPONENTS OF GASKET KITS PLUS BEARINGS, BEARING SLEEVES & VANES FOR MAJOR OVERHAUL.

MODEL(S)		PART NUMBER
1000 B	(OEM EQU. 993.372.02)	BMK025
1600 B	(OEM EQU. 993.402.02)	BMK026

#### OVERHAUL KITS w/EXHAUST FILTERS

OVERHAUL KITS W/EXHAUST FILTERS INCLUDE ALL COMPONENTS OF OVERHAUL KITS PLUS EXHAUST FILTER, OIL FILTER & STRAINER BAFFLE AS REQUIRED.

**NOTE:** KITS SOLD IN EUROPE CONTAIN EXHAUST FILTERS WITH DAMPERS WHERE APPROPRIATE.

MODEL(S)		PART NUMBER
1000 B		BMKF025
1600 B		BMKF026



### FEATURED SPARES

ALL AVAILABLE SPARES FOR THIS SERIES CAN BE FOUND LISTED ON THE 'INDIVIDUAL SPARES' PAGES AT THE END OF THIS SECTION.

#### VANES

MODEL(S)		PART NUMBER
1000 B	(REQ. 3)	72245600
1600 B	(REQ. 6)	72245700



#### EXHAUST FILTERS

MODEL(S)		PART NUMBER
ALL	(REQ. 16)	53230401
ALL	(REQ. 16 W/DAMP)	532917864



#### PRESSURE GAUGES

MODEL(S)		PART NUMBER
ALL		54500400



#### OIL FILL CAPS w/PRESSURE GAUGES

MODEL(S)		PART NUMBER
ALL		94610202



#### OIL FILTERS

MODEL(S)		PART NUMBER
ALL	(REQ. 2)	53100500



#### RECOMMENDED OILS

TYPE		PART NUMBER
PLUS 530 (1L/1.06QT)		530-001
USDA H-2 GENERAL PURPOSE		
PLUS 570 (1L/1.06QT)		570001
USDA H-2 FULLY SYNTHETIC		



### KIT COMPONENTS

PART NUMBER	ITEM DESCRIPTION	1000B,1600B	1000B,1600B	1000B	1000B	1600B	1600B
		FILTER BFK014	GASKET BGK011	OVERHAUL BMK025	W/FILTERS BMKF025	OVERHAUL BMK026	W/FILTERS BMKF026
47300700	BEARING, NEEDLE, NA 6911			2	2	2	2
720017	FILTER PAD,15" X 24"				1		1
53230401	FILTER,EXHAUST,W/O'RING	16			16		16
53100500	FILTER,OIL	2			2		2
48013300	GASKET		1	1	1	1	1
48405700	GASKET,33 X 28 X 1.5		1	1	1	1	1
48013200	GASKET,CYLINDER/EXHAUST BOX 1000/1600	2	1	2	1	2	1
48013100	GASKET,EXH BOX COVER,0400/0630	2	2	2	2	2	2
48023100	GASKET,OIL,SIGHT GLASS	1	2	2	2	2	2
48403400	GASKET,RING		4	4	4	4	4
48407000	GASKET,RING,36 X 42 X 2		1	1	1	1	1
48202300	GASKET,RING,47X55X2		1	1	1	1	1
48402900	GASKET,RING,COPPER		2	2	2	2	2
48405600	GASKET,RING,COPPER		1	1	1	1	1
48406700	GASKET,RING,COPPER	1	1	1	1	1	1
48013400	GASKET,SIDE CVR PLT,0400/0630		1	1	1	1	1
48610200	O'RING,BUNA,142 X 6MM		1	1	1	1	1
48607000	O'RING,BUNA,170 X 2.5MM		1	1	1	1	1
48610300	O'RING,BUNA,210 X 6MM		2	2	2	2	2
71217402	O'RING,BUNA,22 X 3 MM		2	2	2	2	2
48613600	O'RING,BUNA,25 X 4MM		2	2	2	2	2
48610400	O'RING,BUNA,310 X 5MM		2	2	2	2	2
48602800	O'RING,BUNA,35 X 4 MM		16		16		16
48604000	O'RING,BUNA,55 X 3MM		2	2	2	2	2
48206600-330MM	O'RING,SILICONE,330MM LONG		1	1		1	
23970147	O'RING,VITON,16 X 2.5 MM		2	2	2	2	2
43736600	PIN,CYLINDER,16 X 60,DIN 6325			2			
43707500	PIN,TAPER,10 X 75,DIN 7977			2			
43708000	PIN,TAPERED,THREADED			4	4	4	4
71000010	PLUG,OIL DRAIN,1/2" NYLON		1	1	1	1	1
48206600	RING,GASKET				1		1
53402400	SCREEN,INLET,FLAT		1	1	1	1	1
48702100	SEAL,SHAFT,BUNA,60 X 80 X 7/7.5 BBSL		2	2	2	2	2
48702200	SEAL,SHAFT,VITON,60 X 80 X 10/8 BA CFW		2	2	2	2	2
83623	SIGHT GLASS,2060C		1	1	1	1	1
47201300	SLEEVE, SHAFT SEAL, 50X60X40			2	2	2	2
53704200	STRAINER,BAFFLE	2					
73001800	VALVE,INLET BALL,VITON			1	1	1	1
72245700	VANE,BUSCH,RC 1600					6	6
72245600	VANE,GX,1000B			3	3		

### KITS

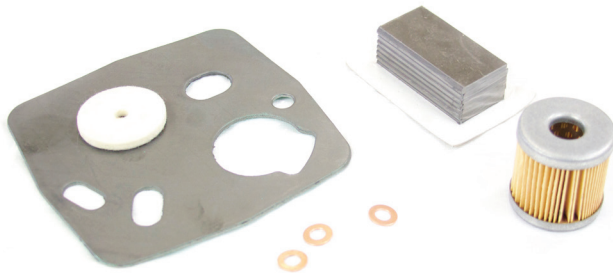
KIT BILL OF MATERIALS CAN BE FOUND LISTED ON THE 'KIT COMPONENTS' PAGES IMMEDIATELY FOLLOWING CORRESPONDING PUMP PAGES.

#### MAJOR OVERHAUL KITS

MAJOR OVERHAUL KITS INCLUDE VANES, GASKETS, FILTERS, COPPER WASHERS & BODY GASKETS FOR MAJOR OVERHAUL.

**NOTE:** KITS SOLD IN EUROPE CONTAIN EXHAUST FILTERS WITH DAMPERS WHERE APPROPRIATE.

MODEL(S)	PART NUMBER
SV 1010 B	994000017
SV 1010 C	994528975
SV 1016 B	994000014
SV 1016 C	994528977
SV 1025 B	994000015
SV 1025 C	994528979
SV 1040 B	994000016
SV 1040 C	994528981
SV 1063 B	994000018
SV 1080 B	994000019
SV 1100 C	983506675
SV 1140 C	993506676



### FEATURED SPARES

ALL AVAILABLE SPARES FOR THIS SERIES CAN BE FOUND LISTED ON THE 'INDIVIDUAL SPARES' PAGES AT THE END OF THIS SECTION.

#### VANES

MODEL(S)	PART NUMBER
SV 1010 B	(REQ. 7) 722000242
SV 1010 C	(REQ. 7) 722533535
SV 1016 B/C	(REQ. 7) 722000489
SV 1025 B	(REQ. 7) 722000189
SV 1025 C	(REQ. 7) 722533536
SV 1040 B/C	(REQ. 7) 722534079
SV 1063 B	(REQ. 4) 722000016
SV 1080 B	(REQ. 4) 722000017
SV 1100 C	(REQ. 4) 722000122
SV 1140 C	(REQ. 4) 722500050



#### FILTERS

MODEL(S)	PART NUMBER
SV 1010 B	(REQ. 1) 53203200
SV 1010 C	(REQ. 1) 53203100
SV 1016 B/C	(REQ. 1) 53203100
SV 1025 B	(REQ. 1) 53203400
SV 1025 C	(REQ. 1) 53203400
SV 1040 B	(REQ. 1) 53203400
SV 1063/1080	(REQ. 1) 532000017
SV 1100 C	(REQ. 1) 532500080
SV 1100 C	(REQ. 1) 532500081
SV 1140 C	(REQ. 1) 532500045
SV 1140 C	(REQ. 1) 532500046



### KIT COMPONENTS

PART NUMBER	ITEM DESCRIPTION	SV1010B MAJOR 994000017	SV1010C MAJOR 994528975	SV1016B MAJOR 994000014	SV1016C MAJOR 994528977	SV1025B MAJOR 994000015	SV1025C MAJOR 994528979
53203100	FILTER,INLET,SV1010/16/25		1	1	1	1	
53203200	FILTER,INLET,SV1010B	1					
53203400	FILTER,INLET,SV1025C,SV1040B/C						1
481000295	GASKET	1					
48129300	GASKET						1
48129400	GASKET		1	1	1	1	
48401400	GASKET,RING	3	3	3	3	3	3
722000242	VANE,CARBON,SV1010	7					
722533535	VANE,CARBON,SV1010C		7				
722000489	VANE,CARBON,SV1016			7	7		
722000189	VANE,CARBON,SV1025					7	
722533536	VANE,CARBON,SV1025C						7
722534079	VANE,CARBON,SV1040						
488000160	WASHER,FELT	1	1	1	1	1	1

PART NUMBER	ITEM DESCRIPTION	SV1063B MAJOR 994000018	SV1080B MAJOR 994000019	SV1100C MAJOR 983506675	SV1140C MAJOR 993506676
473000121	BEARING,BALL,DOUBLE,SV1100C			1	
473500356	BEARING,BALL,DOUBLE,SV1100C			1	
473000283	BEARING,BALL,DOUBLE,SV1140C				1
473000269	BEARING,ROLLER,SINGLE,SV1140C				1
473000118	BEARING,ROLLER,SV1063/1080B	1	1		
473000262	BEARING,ROLLER,SV1063/1080B	1	1		
512000140	CLUTCH,DISK,118X42X16MM	1	1	1	
90220900000	COUPLING,SPIDER,ROTEX,GR38				1
532500080	FILTER, 50 X 148MM, W/GASKET, SV1100				
532500081	FILTER,50 X 175MM,W/GASKET,SV1100 & 1140			1	
532000017	FILTER,84 X 103MM,SV1063 & 1080	1	1	1	
532500046	FILTER,AIR W/SEAL 64X148MM				1
532500045	FILTER,AIR W/SEAL 65X175MM				1
482500108	GASKET,CYLINDER			1	
482500041	GASKET,CYLINDER,JACKET				1
480000295	GASKET,FILTER	2	2		
482500111	GASKET,FILTER,COVER			1	
482500089	GASKET,FILTER,COVER,LOWER			1	
482500039	GASKET,FILTER,COVER,LOWER				1
482500040	GASKET,FILTER,COVER,UPPER				1
48027100	GASKET,OIL,SIGHT GLASS,27X32X2	1	1		
48401400	GASKET,RING	1	1		
487000140	SEAL,SHAFT,BUNA,30X40X7MM	1	1		
570000188A	TUBE, CLEAR, 1 X 2 MM X .44 M	1	1		
570000188B	TUBE, CLEAR, 1 X 2 MM X 1.2 M			1	
570000188C	TUBE, CLEAR, 1 X 2 MM X 1.4 M				1
722000016	VANE,CARBON,SV1063	4			
722000017	VANE,CARBON,SV1080,170X44X3.9MM		4		
722500050	CARBON VANE, 239.5 X 44.7 X 3.85MM				4
722000122	VANE,CARBON,SV1100,250 X 40 X 3.9 MM			4	
488000160	WASHER,FELT	1	1		



### NOTE

LIMITED STOCK ITEM. PLEASE CHECK WITH CUSTOMER SERVICE FOR AVAILABILITY.

### KITS

KIT BILL OF MATERIALS CAN BE FOUND LISTED ON THE 'KIT COMPONENTS' PAGES IMMEDIATELY FOLLOWING CORRESPONDING PUMP PAGES.

#### MAJOR OVERHAUL KITS

MAJOR OVERHAUL KITS INCLUDE GASKETS, BEARINGS, BEARING SLEEVES, DRIVE BELTS, SHIMS, SHAFT SEALS & VANES FOR MAJOR OVERHAUL.

MODEL(S)	PART NUMBER
0429 F	0993513252
0433 F	0993513253
0437 F	0993513254
0441 F	0993513255



### FEATURED SPARES

ALL AVAILABLE SPARES FOR THIS SERIES CAN BE FOUND LISTED ON THE 'INDIVIDUAL SPARES' PAGES AT THE END OF THIS SECTION.

#### VANES

MODEL(S)	PART NUMBER
0429 F	(REQ. 11) 0722510545
0433 F	(REQ. 5) 0722510545
0433 F	(REQ. 6) 0722510546
0437 F	(REQ. 11) 0722510547
0441 F	(REQ. 5) 0722510547
0441 F	(REQ. 6) 0722510548



#### COGGED DRIVE BELTS

MODEL(S)	PART NUMBER
0429/0433 F	(REQ. 3) 0513508527
0429/0433 F	(REQ. 1) 0513508528
0437/0441 F	(REQ. 3) 0513510517
0437/0441 F	(REQ. 1) 0513511367





### KIT COMPONENTS

PART NUMBER	ITEM DESCRIPTION	0429F MAJOR 0993513252	0433F MAJOR 0993513253	0437F MAJOR 0993513254	0441F MAJOR 0993513255
0473000231	BEARING,BALL,17X47X14MM	2	2	2	2
0473508910	BEARING,BALL,30X72X30MM	2	2		
0473510542	BEARING,BALL,40X90X36.5MM			2	2
0473508911	BEARING,ROLLER,30X72X19MM	2	2		
0473510541	BEARING,ROLLER,40X90X23MM			2	2
0472508919	BEARING,SLEEVE,INNER,30X35X30	2	2		
0472508948	BEARING,SLEEVE,INNER,40X45X30			2	2
0513508527	BELT,COGGED,SINGLE,LW=1112MM	3	3		
0513510517	BELT,COGGED,SINGLE,LW=1700MM			3	3
0513508528	BELT,COGGED,SINGLE,LW=587MM	1	1		
0513511367	BELT,COGGED,SINGLE,LW=710MM			1	1
0460508925	BUSHING,SLEEVE,COATED,35X42X42MM	4	4		
0460510818	BUSHING,SLEEVE,COATED,45X55X47MM			4	4
0512000001	COUPLING,CLUTCH CASE,BOWEX M-14	1	1	1	1
0512000114	COUPLING,SPIDER,ROTEX 42	1	1		
0512000116	COUPLING,SPIDER,ROTEX 55			1	1
0443513262	FITTING,GREASE,90 DEGREE,H3			4	4
0443000006	FITTING,GREASE,STRAIGHT,H1	4	4		
0481000257	GASKET	1	1	1	1
300097	GASKET,ROUND,75 X 40 X .4MM	1	1	1	1
300098	GASKET,SEAL,D RING	1	1	1	1
0481000272	GASKET,SWITCH SEAL	1	1	1	1
0482000079	GASKET,VITON	2	2	2	2
0486000711	O'RING,VITON,10 X 4 MM	8	8	8	8
0486000537	O'RING,VITON,108 X 3 MM			1	1
0486000612	O'RING,VITON,110 X 4 MM			4	4
0486000538	O'RING,VITON,118 X 3 MM	1	1	1	1
0486000758	O'RING,VITON,148 X 3 MM	2	2		
0486000759	O'RING,VITON,150 X 3 MM	2	2		
0486000616	O'RING,VITON,20 X 4 MM	1	1	1	1
0486515755	O'RING,VITON,220 X 3 MM			2	2
0486515756	O'RING,VITON,230 X 3 MM			2	2
0486000638	O'RING,VITON,25 X 2.5 MM	1	1	1	1
0486508909	O'RING,VITON,30 X 1.5 MM	2	2		
0486508947	O'RING,VITON,40 X 1.5 MM			2	2
0486000518	O'RING,VITON,48 X 3 MM	4	4		
0486508906	O'RING,VITON,57 X 3.53 MM	16	16		
0486000523	O'RING,VITON,60 X 3 MM			4	4
0486508907	O'RING,VITON,62 X 3.53 MM			24	24
0486000534	O'RING,VITON,94 X 3 MM	2	2	1	1
0486000707	O'RING,VITON,94 X 4 MM	4	4		
0437000080	PIN,TAPER,THREADED,8X65,STEEL	4	4		
0437000082	PIN,TAPER,THREADED,8X75,STEEL			4	4
0488508521	RING,SLIP,CARBON,44X54X10.5MM	4	4		
0488508520	RING,SLIP,CARBON,55X67X10.3MM			4	4
0482000096	SEAL,BUNA	1	1	1	1
0487000044	SEAL,SHAFT,VITON,35X47X7	4	4		
0487000055	SEAL,SHAFT,VITON,42X62X8	12	12		
0487000115	SEAL,SHAFT,VITON,45X62X8			4	4
0487000063	SEAL,SHAFT,VITON,55X72X8			12	12
0433000060	SHIM,TOLERANCE,RING,.05MM,S/S	3	3		
0433511323	SHIM,TOLERANCE,RING,.05MM,S/S			3	3
0433511322	SHIM,TOLERANCE,RING,.075MM,S/S			3	3
0433511324	SHIM,TOLERANCE,RING,.075MM,S/S	3	3		
0433000059	SHIM,TOLERANCE,RING,.1MM,S/S	3	3		
0433511321	SHIM,TOLERANCE,RING,.1MM,S/S			3	3
0442000020	SLEEVE,FITTING,4MM ID,BRASS	8	8	8	8
0442500445	SLEEVE,FITTING,4MM ID,COPPER	24	24	24	24
0442000021	SLEEVE,FITTING,6MM ID,BRASS	1	1	1	1
0442500446	SLEEVE,FITTING,6MM ID,COPPER	1	1	1	1
0472508918	SLEEVE,INNER,W/GROOVE,30X35X16MM	2	2		
0472510848	SLEEVE,INNER,W/GROOVE,40X45X17MM			2	2
0438000001	SLEEVE,INSERT,2MM OD,BRASS	32	32	32	32

### **KIT COMPONENTS (CONT.)**

PART NUMBER	ITEM DESCRIPTION	0429F	0433F	0437F	0441F
		MAJOR 0993513252	MAJOR 0993513253	MAJOR 0993513254	MAJOR 0993513255
043800006	SLEEVE,INSERT,4MM OD,BRASS	2	2	2	2
0481000163	SPACER,PAPER,THICK,WHITE			4	4
0481000165	SPACER,PAPER,THICK,WHITE	4	4		
0481000162	SPACER,PAPER,THIN,BROWN			4	4
0481000164	SPACER,PAPER,THIN,WHITE	4	4		
0754000055	TUBE,TEFLON,4MM OD,8.5M LONG	1	1	1	1
0754000056	TUBE,TEFLON,6MM OD,1.5M LONG	1	1	1	1
0541000028	VALVE,CHECK,ANGLE,R 1/8"	8	8	8	8
0722510545	VANE,GX,170 X 38,HUCKEPACK	11	5		
0722510546	VANE,GX,250 X 38,HUCKEPACK		6		
0722510547	VANE,GX,280 X 63,HUCKEPACK			11	5
0722510548	VANE,GX,420 X 63,HUCKEPACK				6

**NOTE**

LIMITED STOCK ITEM. PLEASE CHECK WITH CUSTOMER SERVICE FOR AVAILABILITY.

**KITS**

KIT BILL OF MATERIALS CAN BE FOUND LISTED ON THE 'KIT COMPONENTS' PAGES IMMEDIATELY FOLLOWING CORRESPONDING PUMP PAGES.

**MAJOR OVERHAUL KITS**

MAJOR OVERHAUL KITS INCLUDE O-RINGS, BEARINGS & PISTON RINGS FOR MAJOR OVERHAUL.

MODEL(S)	PART NUMBER
DS 700	650051



**FEATURED SPARES**

ALL AVAILABLE SPARES FOR THIS SERIES CAN BE FOUND LISTED ON THE 'INDIVIDUAL SPARES' PAGES AT THE END OF THIS SECTION.

**PISTON RINGS**

MODEL(S)	PART NUMBER
DS 700	(REQ. 12) 350019
DS 700	(REQ. 22) 350020



**BALL BEARINGS**

MODEL(S)	PART NUMBER
DS 700	(REQ. 2) 330046
DS 700	(REQ. 2) 330049
DS 700	(REQ. 4) 330048



**KIT COMPONENTS (CONT.)**

PART NUMBER	ITEM DESCRIPTION	DS700 MAJOR 650051
330049	BEARING,BALL,3307	2
330048	BEARING,BALL,6306C3	4
330046	BEARING,BALL,6306ZC3	2
79133B	O'RING,BUNA,21 X 2 MM	3
53598502	O'RING,VITON,120X3MM	2
20011544	O'RING,VITON,144.5 X 3 MM	2
320135	O'RING,VITON,15 X 2.5 MM	2
320271	O'RING,VITON,202.79X3.53MM	2
06995974	O'RING,VITON,220 X 3MM	2
320273	O'RING,VITON,240X3MM	2
320167	O'RING,VITON,247.25 X 3.53 MM	2
320276	O'RING,VITON,28X1.5MM	4
23970415	O'RING,VITON,30 X 2 MM	2
23963115	O'RING,VITON,38 X 3 MM	2
320275	O'RING,VITON,53.57X3.53MM	2
320274	O'RING,VITON,61.9X3.53MM	2
320272	O'RING,VITON,80X5MM	4
71421340	O'RING,VITON,82.14X3.53 MM	2
350019	PISTON,RING	12
350020	PISTON,RING	24

## INDIVIDUAL SPARES

### BEARINGS

0472508919	BEARING,SLEEVE,INNER,30X35X30	0429F
0472508948	BEARING,SLEEVE,INNER,40X45X30	0437F
0473000231	BEARING,BALL,17X47X14MM	0429F
0473508910	BEARING,BALL,30X72X30MM	0429F
0473508911	BEARING,ROLLER,30X72X19MM	0429F
0473510541	BEARING,ROLLER,40X90X23MM	0437F
0473510542	BEARING,BALL,40X90X36.5MM	0437F
330046	BEARING,BALL,6306ZC3	DS700
330048	BEARING,BALL,6306C3	DS700
330049	BEARING,BALL,3307	DS700
47200800	BEARING,SLEEVE,30X35X46	0160,0250
47201100	BEARING,SLEEVE (RACE)	0400,0630
47201500	BEARING,SLEEVE 20X25X38.5	0025C,E00040C/E
472105768	BEARING,SLEEVE	0012,0021
472105769	BEARING,SLEEVE (IR)	0025,0040
472105770	BEARING,SLEEVE	0063,0100
47300300	BEARING,NEEDLE,RNA4904	0025,0025B,0025C,0025E,0040,0040B,0040C,0040E
47300400	BEARING,NEEDLE,RNA4905	0063,0063B,0063C,0063E,0100,0100B,0100C,0100E
47300500	BEARING,NEEDLE 0160,0250	
47300700	BEARING, NEEDLE, NA 6911	1000B
47300900	BEARING,NEEDLE,NO SLV. (RACE)	0400,0630
473103122	BEARING,NEEDLE ROLLER	0025,0040
473103123	BEARING,NEEDLE	0063,0100
947501331	ASSY,BEARING,TEFLON	0012,0021

### BUSHINGS

0460508925	BUSHING,SLEEVE,COATED,35X42X42MM	0429F
0460510818	BUSHING,SLEEVE,COATED,45X55X47MM	0437F

### CAPS

94610002	CAP,OIL FILL,W/PRESSURE GAUGE	0010B,0010C,0010D,0012B,0016B,0016C,0016D,0021B,025B,0025C,0025E,0040B,0040C,0040E,0055C,0055E
94610102	CAP,OIL FILL,W/PRESSURE GAUGE	0063,0100
94610202	CAP,OIL FILL,W/PRESSURE GAUGE	0160,0250,0400,0630

### COUPLINGS

0512000001	COUPLING,CLUTCH CASE,BOWEX M-14	0429F
0512000114	COUPLING,SPIDER,ROTEX 42	0429F
0512000116	COUPLING,SPIDER,ROTEX 55	0437F

### FILTERS

53100100	FILTER,OIL	0160,0250
53100200	FILTER,OIL	0025,0040,0063,0100
53100500	FILTER,OIL	0400,0630,1000,1600
532000017	FILTER,84 X 103MM,SV1063 & 1080	SV1063,SV1080
53200200	FILTER,INLET,0025-0063	0025,0040,0063
53200300	FILTER,INLET,0100 0100	
53200400	FILTER,INLET,0160-0305	0160,0250
53200500	FILTER,INLET,0010-0012	0010,0012
53200600	FILTER,INLET,0400-0630	0400,0630
53203100	FILTER,INLET,SV1010/16/25	SV1010C, SV1016B, SV1016C,SV1025B, SV1040B, SV1040C
53203200	FILTER,INLET,SV1010B SV1010B	
53203400	FILTER,INLET,SV1025C,SV1040B/C	SV1025C
53208201	FILTER,EXHAUST,W/O'RING	0160,0250
532105216	FILTER,EXHAUST,W/O'RING	0010C,0010D,0016C,0016D
53230001	FILTER,EXHAUST,W/O'RING	0010,0016
53230100	FILTER,EXHAUST,SCREW ON	0100-111,0100-131
53230201	FILTER,EXHAUST,W/O'RING	0025,0040,0063,0100
53230401	FILTER,EXHAUST,W/O'RING	0400,0630,1000,1600
532500045	FILTER,AIR W/SEAL 65X175MM	SV1140C
532500046	FILTER,AIR W/SEAL 64X148MM	SV1140C
532500080	FILTER,50 X 148MM,W/GASKET,SV1100 & 1140	SV1100,SV1140
532500081	FILTER,50 X 175MM,W/GASKET,SV1100 & 1140	SV1100,SV1140
53251001	FILTER,EXHAUST,W/O'RING	0012,0021
53251201	FILTER,EXHAUST,W/SILENCER	0025
532917478	FILTER,EXHAUST,SILENCER ,W/O'RING,5.1"	
720014	FILTER PAD,12" X 12"	0160D3FLT,0202D
720017	FILTER PAD,15" X 24"	1000B,1600B

### GASKETS

0481000257	GASKET	0429F
0481000272	GASKET,SWITCH SEAL	0429F
0482000079	GASKET,VITON	0429F



### INDIVIDUAL SPARES

#### GASKETS (CONT.)

300066	GASKET,EXHAUST COVER,FRONT	0165D,0205D,0255D,0305D
300067	GASKET,EXHAUST COVER,SIDE	0165D,0205D,0255D,0305D
300068	GASKET,EXHAUST COVER,END	0165D,0205D,0255D,0305D
300072	GASKET 70X70X1 MM	0010B,0010C,0010D,0016B,0016C,0016D
300097	GASKET,ROUND,75 X 40 X .4MM	0429F
300098	GASKET,SEAL,D RING	0429F
480000150	GASKET,CYLINDER/EXH. BOX	0025B,0025C,0025E,0040B,0040C,0040E,0055C,0055E,0025C,0025E,0040C,0040E,0063,0063B,0063C,0063E,0100,0100B,0100C,0100E,0063C,0063E,0100C,0100E
48010200	GASKET,0010B/C/D&0016B/C/D	0010B,0016B
48010400	GASKET,EXHAUST	0160,0250
48010500	GASKET,EXHAUST	0025,0040,0063,0100
48010800	GASKET,CYLINDER/EXHAUST BOX	0160,0250
480108718	GASKET	0063,0063B,0063C,0063E,0100,0100B,0100C,0100E
48011100	GASKET,CYL TO EXH BOX,400/630	0400,0630
48011200	GASKET,CYLINDER	0012,0021
48011500	GASKET,EXHAUST	0063,0100
48012300	GASKET,0160,0250	0160,0250
48012400	GASKET,0160,0250	0160,0250
48012800	GASKET,0400,0630	0400,0630
48013100	GASKET,EXH BOX COVER,0400/0630	0400,0630
48013200	GASKET,CYLINDER/EXHAUST BOX 1000/1600	1000B,1600B
48013300	GASKET	1000B,1600B
48013400	GASKET,SIDE CVR PLT,0400/0630 0400,0630	
48014300	GASKET,COVER PLATE	0160,0250
48015000	GASKET	0063,0063B,0063C,0063E,0100,0100B,0100C,0100E
48015300	GASKET	0025B,0025C,0025E,0040B,0040C,0040E,0055C,0055E,0025C,0025E,0040C,0040E,0063,0063B,0063C,0063E,0100,0100B,0100C,0100E
48021600	GASKET 56X56X1 MM	0010B,0010C,0010D,0016B,0016C,0016D
48023100	GASKET,OIL,SIGHT GLASS	0010,0016,0012,0021,0025,0040,0063,0100,0160,025
48027100	GASKET,OIL,SIGHT GLASS,27X32X2	0012,0021
480537332	GASKET,OIL COOLER	0400,0400B,0400-2121,0502B,0630,0630B,0630-212,0400-212,0502B,0630,0630B
481000295	GASKET	SV1010B
48129300	GASKET	SV1025C
48129400	GASKET	SV1010C, SV1016B, SV1016C,SV1025B, SV1040B, SV1040C
481502719	GASKET,COVER PLATE,SIDE	0250C
481502720	GASKET 0160C,0160D	2FLT,0160D3FLT,0160D3FLT,0202D,0250C,0250D,0302D
481502721	GASKET,BOX,EXHAUST	0250C
481503784	GASKET 0160C,0160D	2FLT
481503785	GASKET 0160C,0160D	2FLT,0160D 3FLT
481503786	GASKET 0160C,0160D	0250D
481516780	GASKET 0160C,0160D	2FLT,0160D3FLT,0202D,0165D,0205D,,0255D,0305D
481516781	GASKET,CYLINDER TO EXHAUST BOX	0160D3FLT,0202D,0165D,0205D,0255D,0305D,0202D,0250C,0250D,0302D,0250C,0255D,0305D
481525294	GASKET,OIL FILL,ELBOW	0165D,0205D,0255D,0305D
481529712	GASKET,FLOAT VALVE	0400,0400B,0400-2121,0502B,0630,0630B,0630-212,0400-212,0502B,0630,0630B
481532126	GASKET,COVER,FLOAT VALVE	0400,0400B,0400-2121,0502B,0630,0630B,0630-212,0400-212,0502B,0630,0630B
48202000	GASKET,OIL FILL PLUG	0012,0021,0025,0040
48202100	GASKET,OIL FILL PLUG	0063,0100
48202300	GASKET,RING,47X55X2	VCAH/EH100
48203400	GASKET,0160,0250	0160,0250
48210600	GASKET,OIL FILL PLUG	0160,0250,0400,0630
48221000	GASKET,40X33X2	0063B,0100B,0063C,0063E,0100C,0100E
482901835	GASKET,SEAL,VITON,VST 1 R 1/4	0165D,0205D,0255D,0305D
48401400	GASKET,RING	0063,0100, SV1010B, SV1010C,SV1016B, SV1016C, SV1025B, SV1025C, SV1040B, SV1040C
48401700	GASKET,RING	0012,0021,0025,0040,0063,0100
48402900	GASKET,RING,COPPER	0025,0040,0063,0100,0160,0250,0400,0630
48403400	GASKET,RING	0012,0021,0025,0040,0063,0100,0160,0250
48404000	GASKET,RING	0160,0250,0400,0630
48405600	GASKET,RING,COPPER	0021,0025
48405700	GASKET,33 X 28 X 1.5	1000B,1600B
48406200	GASKET,RING	0012,0021,0025,0040,0400,0630
48406700	GASKET,RING,COPPER	0063,0100,1000,1600
48407000	GASKET,RING,36 X 42 X 2	1000B,1600B
<b>HARDWARE</b>		
42000500	NUT,HEX,M6	0025,0025B,0025C,0025E,0040,0040B,0040C,0040E,0063,0063B,0100,0100B,0160,0160B,0160D 3FLT,0202D,0250,0250B

## INDIVIDUAL SPARES

### HARDWARE (CONT.)

42000700	NUT,HEX,M8	0063C,0063E,0100,0100B,0100C,0100E,0400,0400B,0400-212,0502B,0502B,0630,0630B
488000160	WASHER,FELT	SV1010B, SV1010C, SV1016B,SV1016C, SV1025B, SV1025C,SV1040B, SV1040C

### KITS

0993513252	KIT,MAJOR,REBUILD,0429F	0429F
0993513253	KIT,MAJOR,REBUILD,0433F	0433F
0993513254	KIT,MAJOR,REBUILD,0437F	0437F
0993513255	KIT,MAJOR,REBUILD,0441F	0441F
983506675	KIT,MAJOR REPAIR	SV1100C
993506676	KIT,MAJOR REPAIR	SV1140C
994000014	KIT,OVERHAUL,DRY VANE,SV1016B	SV1016B
994000015	KIT,OVERHAUL,DRY VANE,SV1025B	SV1025B
994000016	KIT,OVERHAUL,DRY VANE,SV1040B	SV1040B
994000017	KIT,OVERHAUL,DRY VANE,SV1010B	SV1010B
994000018	KIT,MAJOR REPAIR	SV1063B
994000019	KIT,MAJOR REPAIR	SV1080B
994528975	KIT,OVERHAUL,DRY VANE,SV1010C	SV1010C
994528977	KIT,OVERHAUL,DRY VANE,SV1016C	SV1016C
994528979	KIT,OVERHAUL,DRY VANE,SV1025C	SV1025C
994528981	KIT,OVERHAUL,DRY VANE,SV1040C	SV1040C
BFK001	KIT FILTER	0010B 0016B 0010B,0016B
BFK002	KIT FILTER	0010C/D 0016C/D 0010C,0010D,0016C,0016D
BFK003	KIT FILTER	0012/B 0021/B 0012,0012B,0021,0021B
BFK004	KIT FILTER	0025/B 0040/B 0025,0025B,0040,0040B
BFK005	KIT FILTER	0025C/E 0040C/E 0025C,0025E,0040C,0040E
BFK006	KIT FILTER	0063/B 0100/B 0063,0063B,0100,0100B
BFK007	KIT FILTER	0063C/E 0100C/E 0063C,0063E,0100C,0100E
BFK008	KIT FILTER 0160/B 0250/B -116	0160,0160B 0160-116,0250,0250B,0250-116
BFK009	KIT FILTER 0160D 2FILTER	0160C,0160D 2FLT
BFK010	KIT FILTER 0165D-0305D	0165D,0205D,0255D,0305D
BFK011	KIT FILTER 0160D 3FILTER	0202D 0160D 3FLT,0202D
BFK012	KIT FILTER 0250C/D 0302D	0250C,0250D,0302D
BFK013	KIT FILTER 0400B/212 0630B/212	0400,0400B,0400-212,0502B,0630,0630B,0630-212
BFK014	KIT FILTER 1000B 1600B	1000B,1600B
BGK001	KIT GASKET UNIVERSAL	0010B,0010C,0010D,0016B,0016C,0016D
BGK002	KIT GASKET UNIVERSAL	0025,0025B,0025C,0025E,0040,0040B,0040C,0040E,0055
BGK003	KIT,GASKET,0025/0040C&E	0025B,0025C,0025E,0040B,0040C,0040E,0055C,0055E
BGK003B	KIT,GASKET,0025B,0040B	0025B,0040B
BGK004	KIT, GASKET ,0063, 0100 C & E	0063,0063B,0063C,0063E,0100,0100B,0100C,0100E
BGK004B	KIT,GASKET 0063B,0100B	0063B,0100B
BGK005	KIT GASKET UNIVERSAL	0160,0160B,0250,0250B
BGK006	KIT GASKET UNIVERSAL	0160C,0160D 2FLT,0160D 3FLT
BGK007	KIT GASKET UNIVERSAL	0160-11,0250-116
BGK008	KIT GASKET UNIVERSAL	0165D,0205D,0255D,0305D
BGK009	KIT GASKET UNIVERSAL	0202D,0250C,0250D,0302D
BGK010	KIT GASKET UNIVERSAL	0400,0400B,0400-212,0502B,0630,0630B,0630-212
BGK011	KIT GASKET UNIVERSAL	1000B,1600B
BMK001	KIT OVERHAUL GX 0010B	0010B
BMK002	KIT OVERHAUL GX 0016B	0016B
BMK003	KIT,MAJOR,GX,0010C/D	0010C,0010D,0016C,0016D
BMK003A	KIT,MAJOR,GX,0016C/D	0016C,0016D
BMK004	KIT MAJOR GX 0012/B	0021/B 0012,0012B,0021,0021B
BMK005	KIT MAJOR GX 0025	0025B 0025,0025B
BMK006	KIT MAJOR GX 0040	0040B 0040,0040B
BMK007	KIT OVERHAUL GX 0025C 0025E	0025C,0025E
BMK008	KIT OVERHAUL GX 0040C 0040E	0040C,0040E
BMK010	KIT MAJOR GX 0063 0063B	0063,0063B
BMK011	KIT MAJOR GX 0100 0100B	0100,0100B
BMK012	KIT OVERHAUL GX 0063C 0063E	0063C,0063E
BMK013	KIT OVERHAUL GX 0100C 0100E	0100C,0100E
BMK014	KIT MAJOR GX 0160 0160B	0160,0160B
BMK015	KIT MAJOR GX 0250 0250B	0250,0250B
BMK016	KIT MAJOR GX 0160C 0160D-2FLT	0160C,0160D 2FIL,TER VERS.
BMK017	KIT OVERHAUL GX 0165D 0205D	0165D,0205D
BMK018	KIT OVERHAUL GX 0255D 0305D	0255D,0305D
BMK019	KIT MAJOR GX 0160D-3FLT 0202D	0160D 3FLT,0202D
BMK020	KIT OVERHAUL GX 0250C/D 0302D	0250C,0250D,0302D
BMK021	KIT MAJOR GX 0400 0400B	0400,0400B
BMK022	KIT,MAJOR,GX,0502B	0400-212,0502B
BMK023	KIT MAJOR GX 0630	0630B 0630,0630B
BMK025	KIT OVERHAUL GX 1000B	1000B
BMK026	KIT OVERHAUL GX 1600B	1600B

### INDIVIDUAL SPARES

#### KITS (CONT.)

BMKF001	KIT MAJOR GX W/FILTERS 0010B	0010B
BMKF002	KIT MAJOR GX W/FILTERS 0016B	0016B
BMKF003	KIT MAJOR GX W/FILTERS	0010C,0010D,0016C,0016D
BMKF004	KIT OVERHAUL GX W/FILTERS	0012,0012B,0021,0021B
BMKF005	KIT MAJOR GX W/FILTERS 0025/B	0025,0025B
BMKF006	KIT MAJOR GX W/FILTERS 0040/B	0040,0040B
BMKF007	KIT MAJOR GX W/FILTER 0025C/E	0025C,0025E
BMKF008	KIT OVERHAUL GX W/FILTERS	0040C,0040E
BMKF010	KIT OVERHAUL GX W/FILTERS	0063,0063B
BMKF011	KIT OVERHAUL GX W/FILTERS	0100,0100B
BMKF012	KIT OVERHAUL GX W/FILTERS	0063C,0063E
BMKF013	KIT OVERHAUL GX W/FILTERS	0100C,0100E
BMKF014	KIT,MAJOR,GX,W/FILTERS,0160/0160B	0160,0160B
BMKF015	KIT,MAJOR,GX,W/FILTERS,0250/0250B	0250,0250B
BMKF016	KIT OVERHAUL GX W/FILTERS	0160C,0160D 2FLT
BMKF017	KIT OVERHAUL GX W/FILTERS	0165D,0205D
BMKF018	KIT OVERHAUL GX W/FILTERS	0255D,0305D
BMKF019	KIT OVERHAUL GX W/FILTERS	0160D 3FLT,0202D
BMKF020	KIT OVERHAUL GX W/FILTERS	0250C,0250D,0302D
BMKF021	KIT,MAJOR,GX,W/FILTERS,0400,0400B	0400,0400B
BMKF022	KIT OVERHAUL GX W/FILTERS	0502B
BMKF023	KIT MAJOR GX W/FILTERS 0025/B	0630,0630B
BMKF025	KIT OVERHAUL GX W/FILTERS	1000B
BMKF026	KIT OVERHAUL GX W/FILTERS	1600B

#### MISC.

0437000080	PIN,TAPER,THREADED,8X65,STEEL	0429F
0437000082	PIN,TAPER,THREADED,8X75,STEEL	0437F
0443000006	FITTING,GREASE,STRAIGHT,H1	0429F
0443513262	FITTING,GREASE,90 DEGREE,H3	0437F
0481000162	SPACER,PAPER,THIN,BROWN	0437F
0481000163	SPACER,PAPER,THICK,WHITE	0437F
0481000164	SPACER,PAPER,THIN,WHITE	0429F
0481000165	SPACER,PAPER,THICK,WHITE	0429F
054098	LOCKNUT, BEARING, N-09	KT300C,KT300D
0754000055	TUBE,TEFLON,4MM OD,8.5M LONG	0429F
0754000056	TUBE,TEFLON,6MM OD,1.5M LONG	0429F
430012	DRAIN PLUG,1.5 GAS,1/8" TAPPED	0160,0250,0400,0630
437000074	PIN,TAPER,THREADED,M8X50MM,DIN 7977	0063C,0063E,0100C,0100E
43700100	PIN,TAPER	0012,0021
43707000	PIN,TAPER,THREADED,M6X40MM	0025,0040,0063
43707100	PIN,TAPER,THREADED	0160,0250
43707300	PIN,TAPER,THREADED	0100
43707500	PIN,TAPER,10 X 75,DIN 7977	1000B
43708000	PIN,TAPERED,THREADED	0400,0630
43736600	PIN,CYLINDER,16 X 60,DIN 6325	1000B
437502718	PIN,TAPER,INTERNAL THREAD	0165D,0205D,0255D,0305D
53400900	SCREEN,INLET	0025,0040,0063,0100
53401800	SCREEN,INLET,CONICAL	0025,0040
53402400	SCREEN,INLET,FLAT	1000B,1600B
53404100	SCREEN,INLET (CONE SHAPE)	
53405600	SCREEN,INLET	0010B,0010C,0010D,0016C,0016D,0012,0012B,0021,0021B,0016B
53701300	STRAINER,BAFFLE	0160,0250
53701400	STRAINER,BAFFLE	0025,0040
53701500	STRAINER,BAFFLE	0063,0100
53701700	STRAINER,BAFFLE	0010,0016
53702300	STRAINER,BAFFLE	0012,0021
53703300	STRAINER,BAFFLE	0160,0250
53703400	STRAINER,BAFFLE	0400,0630
53704200	STRAINER,BAFFLE	0400,0630
53705100	STRAINER,BAFFLE	0160,0250
537503047	BAFFLE,STRAINER	0250C
537524514	BAFFLE,STRAINER	0165D,0205D,0255D,0305D
54500400	GAUGE,PRESSURE	0010,0012,0016,0025,0040,0063,0100,0160,0250,040 1000, 1600
56100100	FOOT,RUBBER	
56100500	FEET,RUBBER, FOR 0250	0250
710000010	PLUG,OIL DRAIN,1/2" NYLON	0012,0021,0063,0100,0160
71010000	PLUG,OIL DRAIN,1/2" NYLON	0010,0016,0012,0021,0025,0040,0063,0100,0160,025

#### O-RINGS

0486000518	O'RING,VITON,48 X 3 MM	0429F
0486000523	O'RING,VITON,60 X 3 MM	0437F
0486000534	O'RING,VITON,94 X 3 MM	0429F

### INDIVIDUAL SPARES

#### O-RINGS (CONT.)

0486000537	O'RING,VITON,108 X 3 MM	0437F
0486000538	O'RING,VITON,118 X 3 MM	0429F
0486000612	O'RING,VITON,110 X 4 MM	0437F
0486000616	O'RING,VITON,20 X 4 MM	0429F
0486000638	O'RING,VITON,25 X 2.5 MM	0429F
0486000707	O'RING,VITON,94 X 4 MM	0429F
0486000711	O'RING,VITON,10 X 4 MM	0429F
0486000758	O'RING,VITON,148 X 3 MM	0429F
0486000759	O'RING,VITON,150 X 3 MM	0429F
0486508906	O'RING,VITON,57 X 3.53 MM	0429F
0486508907	O'RING,VITON,62 X 3.53 MM	0437F
0486508909	O'RING,VITON,30 X 1.5 MM	0429F
0486508947	O'RING,VITON,40 X 1.5 MM	0437F
0486515755	O'RING,VITON,220 X 3 MM	0437F
0486515756	O'RING,VITON,230 X 3 MM	0437F
320186	O'RING,VITON,105 X 4 MM	SV630,SV630F
320271	O'RING,VITON,202.79X3.53MM	
320272	O'RING,VITON,80X5MM	
320273	O'RING,VITON,240X3MM	
320274	O'RING,VITON,61.9X3.53MM	
320275	O'RING,VITON,53.57X3.53MM	
320276	O'RING,VITON,28X1.5MM	
48206600-330MM	O'RING,SILICONE,330MM LONG	
48206600-420MM	O'RING,SILICONE,420MM LONG	
48206600-660MM	O'RING,SILICONE,660MM LONG	
482525646-330MM	O'RING,SILICONE,4MM,330MM LONG	
486000612	O'RING,VITON,110 X 4 MM	0400,0630
48601600	O'RING,BUNA,22 X 2 MM	0010,0016,0012,0021,0025,0040,0063,0100,0160,025
48602800	O'RING,BUNA,35 X 4 MM	0010,0016,0012,0021,0025,0040,0063,0100,0160,025
48604000	O'RING,BUNA,55 X 3MM	1000B,1600B
48607000	O'RING,BUNA,170 X 2.5MM	1000B,1600B
48610200	O'RING,BUNA,142 X 6MM	1000B,1600B
48610300	O'RING,BUNA,210 X 6MM	1000B,1600B
48610400	O'RING,BUNA,310 X 5MM	1000B,1600B
486114368	O'RING,SERVICE BLOCK,VITON,SPECIAL	
48613600	O'RING,BUNA,25 X 4MM	1000B,1600B
48650500	O'RING,VITON,22 X 2 MM	0012,0021,0025,0040
48651200	O'RING,VITON,35 X 4 MM	0012,0021,0025,0040,0063,0100,0160,0250,0400,063
48651600	O'RING,VITON,45 X 2.5 MM	0025,0040,0063,0100
486516620	O'RING,VITON 34 X 3 MM	
48652100	O'RING,VITON,55 X 3 MM	0012,0021,0025,0040,0063,0100,0160,0250
48652600	O'RING,VITON,65 X 3 MM	0025,0040,0063,0100,0160,0250
48652700	O'RING,VITON,66X2MM	0010B,0010C,0010D,0016B,0016C,0016D
48653100	O'RING,VITON,87 X 3 MM	0160,0250
48653700	O'RING,VITON,108 X 3 MM	0025,0040
48653900	O'RING,VITON,128 X 3 MM	0063,0100
48654300	O'RING,VITON,186 X 3.5 MM	0160,0250
48654900	O'RING,VITON,265 X 4 MM	0400,0630
48655900	O'RING,VITON,44 X 3 MM	0025,0040,0063,0100
48656100	O'RING,VITON,25 X 2 MM	0012,0021
48656400	O'RING,VITON,72 X 2.5 MM	0012,0021
48656700	O'RING,VITON,140 X 5 MM	0400,0630
48657600	O'RING,VITON,28X3.5 MM	0010B,0010C,0010D,0016B,0016C,0016D
48658700	O'RING,VITON,16.2 X 3MM	
48661100	O'RING,VITON,97 X 5 MM	0400,0630
48663500	O'RING,VITON,56 X 2.5 MM	0012,0021
486903988	O'RING,VITON,266.3 X 3.53MM	

#### RINGS

0488508520	RING,SLIP,CARBON,55X67X10.3MM	0437F
0488508521	RING,SLIP,CARBON,44X54X10.5MM	0429F
350019	PISTON,RING	DS700
350020	PISTON,RING	DS700
432107575	RING,RETAINER,ZA18	0025C,0025E,0040C,0040E
43236700	RING,RETAINING	0025,0040
43238000	RING,RETAINING	0063,0100
433000309	RING,TOLERANCE,AN	18X10 0025C,0025E,0040C,0040E
71071000	RING,SUPPORT	0012,0012B,0021,0021B

#### SEALS

0482000096	SEAL,BUNA	0429F
0487000044	SEAL,SHAFT,VITON,35X47X7	0429F
0487000055	SEAL,SHAFT,VITON,42X62X8	0429F



### INDIVIDUAL SPARES

#### SEALS (CONT.)

0487000063	SEAL,SHAFT,VITON,55X72X8	0437F
0487000115	SEAL,SHAFT,VITON,45X62X8	0437F
42201000	SEAL,SHAFT,SLEEVE	0400,0630
484000233	SEAL,DOWTY,VITON	0165D,0205D,0255D,0305D,0202D,0250C
484130591	SEAL,DOWTY,VITON,27X35X2.3MM	0012,0012B,0021,0021B,0025,0025B,0025C,0025E,0040,0040B,0040C,0040E,0055,0055C,0055E,0063,0063B,0063C,0063E,0100,0100B,0100C,0100E
48700200	SEAL,SHAFT,VITON	0010,0012,0016,0021
48700500	SEAL,SHAFT,VITON	0025,0040
48700800	SEAL,SHAFT,VITON,30X42X6	0063,0100
48701200	SEAL,SHAFT,VITON	0160,0250
48702100	SEAL,SHAFT,BUNA,60 X 80 X 7/7.5 BABSL	1000B,1600B
48702200	SEAL,SHAFT,VITON,60 X 80 X 10/8 BA CFW	1000B,1600B
48703200	SEAL,SHAFT,VITON	0400,0630

#### SHIMS

0433000059	SHIM,TOLERANCE,RING,.1MM,S/S	0429F
0433000060	SHIM,TOLERANCE,RING,.05MM,S/S	0429F
0433511321	SHIM,TOLERANCE,RING,.1MM,S/S	0437F
0433511322	SHIM,TOLERANCE,RING,.075MM,S/S	0437F
0433511323	SHIM,TOLERANCE,RING,.05MM,S/S	0437F
0433511324	SHIM,TOLERANCE,RING,.075MM,S/S	0429F

#### SLEEVES

0438000001	SLEEVE,INSERT,2MM OD,BRASS	0429F
0438000006	SLEEVE,INSERT,4MM OD,BRASS	0429F
0442000020	SLEEVE,FITTING,4MM ID,BRASS	0429F
0442000021	SLEEVE,FITTING,6MM ID,BRASS	0429F
0442500445	SLEEVE,FITTING,4MM ID,COPPER	0429F
0442500446	SLEEVE,FITTING,6MM ID,COPPER	0429F
0472508918	SLEEVE,INNER,W/GROOVE,30X35X16MM	0429F
0472510848	SLEEVE,INNER,W/GROOVE,40X45X17MM	0437F
47200400	SLEEVE BEARING,20X25X26.5	0025,0025B,0040,0040B
47200600	SLEEVE,BEARING,25X30X26.5	0063,0063B,0100,0100B
47201000	SLEEVE,BEARING,45 X 52 X 22	0400,0400B,0400-212,0502B,0502B,0630,0630B
47201300	SLEEVE, SHAFT SEAL, 50X60X40	1000B
472105822	SLEEVE,BEARING,25X30X38.5	SV65B

#### VALVES

0541000028	VALVE,CHECK,ANGLE,R 1/8"	0429F
73001800	VALVE,INLET BALL,VITON	0063,0063B,0400,0400B,0502B,0630,0630B,1000B,1600B
916126769	VALVE,EXHAUST,PLASTIC,VITON	0063C, 0063E, 0100C, 0100E
916529297	VALVE,EXHAUST,PLASTIC,W/GASKETS	0160B, 0160C, 0165D, 0202D,0205B, 0205D, 0250B, 0250C, 0250D, 0255D, 0302D, 0305D,0400B, 0502B, 0630B, 1000B,1600B

#### VANES

0722510545	VANE,GX,170 X 38,HUCKEPACK	0429F, 0433F
0722510546	VANE,GX,250 X 38,HUCKEPACK	0433F
0722510547	VANE,GX,280 X 63,HUCKEPACK	0437F, 0441F
0722510548	VANE,GX,420 X 63,HUCKEPACK	0441F
71030100	VANE,GX,1ST STAGE,RHO	0012,0021
722000016	VANE,CARBON,SV1063	SV1063
722000017	VANE,CARBON,SV1080,170 X 44 X 3.9 MM	SV1080
722000122	VANE,CARBON,SV1100,250 X 40 X 3.9 MM	SV1100
722000189	VANE,CARBON,SV1025	SV1025B
722000242	VANE,CARBON,SV1010	SV1010B
722000489	VANE,CARBON,SV1016	SV1016B, SV1016C
72227000	VANE,GX,1ST STAGE,0025	0025
72230000	VANE,GX,1ST STAGE,0040	0040
72233000	VANE,GX,1ST STAGE,0063	0063
72236000	VANE,GX,1ST STAGE,0100	0100
72245200	VANE,GX,1ST STAGE,0160	0160
72245300	VANE,GX,1ST STAGE,0250	0250
72245400	VANE,GX,1ST STAGE,0400	0400
72245500	VANE,GX,1ST STAGE,0630	0630
72245600	VANE,GX,1000B	1000B
72245700	VANE,BUSCH,RC 1600	1600B
722516054	VANE,GX,1ST STAGE,0502B	0502B
722516573	VANE,GX,0160D,0165D,0205D	0160D3FLT,0165D,0202D,0205D
722516729	VANE,GX,250CD,0255D,0302D,0305D	0255D,0305D
722533535	VANE,CARBON,SV1010C	SV1010C
722533536	VANE,CARBON,SV1025C	SV1005C



## **INDIVIDUAL SPARES**

### **VANES (CONT.)**

722534079	VANE,CARBON,SV1040	SV1040B, SV1040C
724105206	VANE,GX,0010C/D,0016C/D	0010C,0010D,0016C,0016D
72457300	VANE,GX,0010C/D	0010C,0010D,0016C,0016D
72457400	VANE,GX,0016C/D	0016C,0016D
72457500	VANE,GX,0010B	0010B
72457600	VANE,GX,0016B	0016B

### **VBELTS**

0513508527	BELT,COGGED,SINGLE,LW=1112MM	0429F,0433F
0513508528	BELT,COGGED,SINGLE,LW=587MM	0429F,0433F
0513510517	BELT,COGGED,SINGLE,LW=1700MM	0437F,0441F
0513511367	BELT,COGGED,SINGLE,LW=710MM	0437F,0441F