



KITS

KIT BILL OF MATERIALS CAN BE FOUND LISTED ON THE 'KIT COMPONENTS' PAGES IMMEDIATELY FOLLOWING CORRESPONDING PUMP PAGES.

OVERHAUL KITS

MAJOR OVERHAUL KITS INCLUDE PUMP & MOTOR BEARINGS, INNER & OUTER RINGS, HEADPLATE SLEEVE, LIP SEALS, O-RINGS, SIGHT GLASS, COUPLING ELEMENT, SHIMS, VALVES, MOTOR GASKETS & OTHER COMPONENTS FOR MAJOR OVERHAUL.

MODEL(S)	PART #	PRICE
iH80 (PUMP KIT)	40801800	\$2,450.00
iH160 (PUMP KIT)	40803800	\$2,550.00



PUMP & BOOSTER REPAIR KITS

PUMP & BOOSTER REPAIR KITS INCLUDE ALL COMPONENTS OF OVERHAUL KITS AND BOOSTER KITS FOR A MAJOR OVERHAUL.

MODEL(S)	PART #	PRICE
iH1800/2400 (PUMP & BOOSTER KIT)	40803890	\$4,000.00
iH600/1000 (PUMP & BOOSTER KIT)	40801890	\$3,000.00

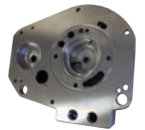


FEATURED SPARES

ALL AVAILABLE SPARES FOR THIS SERIES CAN BE FOUND LISTED ON THE 'INDIVIDUAL SPARES' PAGES AT THE END OF THIS SECTION.

END COVER

MODEL(S)	PART #	PRICE
iH80/160	40801717	\$675.00



ROTARY CARTRIDGE SEALS

MODEL(S)	PART #	PRICE
iH80/160 (L.H. ASSEMBLY)	40801097	\$425.00
iH80/160 (R.H. ASSEMBLY)	40801096	\$425.00



STATORS

MODEL(S)	PART #	PRICE
iH80/160 (2ND STAGE)	40801711	\$950.00
iH80/160 (3RD STAGE)	40801712	\$950.00
iH80 (4TH STAGE)	40801713	\$1,260.00
iH160 (4TH STAGE)	40803713	\$1,260.00
iH80 (HV STATOR)	40801710	\$950.00
iH80 (LV STATOR 2 GROOVE TYPE)	40819714	\$1,260.00
iH160 (HV STATOR)	40803710	\$950.00
iH160 (LV STATOR)	40813714	\$1,260.00



BEARINGS

MODEL(S)	PART #	PRICE
iH80/160 (CAGED CERAMIC 2 PACK)	40801818	\$1,025.00



TIMING GEARS

MODEL(S)	PART #	PRICE
iH80/160/HMB600/1000	22903759	\$1,100.00
HMB1800/2400	22903701	\$1,400.00



ROTORS (CLAW)

MODEL(S)	PART #	PRICE
iH80/160 (2ND STAGE X)	40801724	\$260.00
iH80/160 (2ND STAGE Y)	40801725	\$260.00
iH80/160 (3RD STAGE X)	40801726	\$260.00
iH80/160 (3RD STAGE Y)	40801727	\$260.00
iH80/160 (4TH STAGE X)	40801728	\$260.00
iH80/160 (4TH STAGE Y)	40801729	\$260.00
iH80 (HV ROTOR)	40801723	\$260.00
iH160 (HV ROTOR)	40803723	\$375.00
iH80/160 (HV ROTOR)	40801730	\$260.00



COOLING COIL

MODEL(S)	PART #	PRICE
iH80/HCMB1000	40801702	\$365.00



GEAR COVER

MODEL(S)	PART #	PRICE
iH80/160	40801786	\$1,150.00

KITS

KIT BILL OF MATERIALS CAN BE FOUND LISTED ON THE 'KIT COMPONENTS' PAGES IMMEDIATELY FOLLOWING CORRESPONDING PUMP PAGES.

BOOSTER REPAIR KITS

BOOSTER REPAIR KITS INCLUDE SHADT SEALS, GASKETS, SLEEVES, SHIMS, FILTERS & BEARINGS (AS REQUIRED) FOR A COMPLETE OVERHAUL OF BOTH THE DRIVE SECTION & PUMPING MECHANISM OF BOOSTER PUMPS.

MODEL(S)	PART #	PRICE
HMB600/1000 (BOOSTER KIT)	30305800	\$650.00
HMB1800/2400 (BOOSTER KIT)	30318800	\$1,750.00



FEATURED SPARES

ALL AVAILABLE SPARES FOR THIS SERIES CAN BE FOUND LISTED ON THE 'INDIVIDUAL SPARES' PAGES AT THE END OF THIS SECTION.

SLEEVES

MODEL(S)	PART #	PRICE
iH80 (2ND STAGE N-)	40801068	\$80.00
iH80 (2ND STAGE N)	40801031	\$80.00
iH80 (2ND STAGE N+)	40801069	\$80.00
iH160 (2ND STAGE N)	40803021	\$80.00
iH160 (2ND STAGE)	40805055	\$80.00
iH160 (3RD STAGE N-)	40809062	\$80.00
iH160 (3RD STAGE N)	40809060	\$80.00
iH160 (3RD STAGE N+)	40809061	\$80.00
iH160 (4TH STAGE N-)	40809072	\$80.00
iH160 (4TH STAGE N)	40809070	\$80.00
iH160 (4TH STAGE N+)	40809071	\$80.00
iH160 (4TH STAGE N- PLAIN)	40809077	\$75.00
iH160 (4TH STAGE N PLAIN)	40809075	\$75.00
iH160 (4TH STAGE N+ PLAIN)	40809076	\$75.00
iH160 (LV STAGE N-)	40809082	\$80.00
iH160 (LV STAGE N)	40809080	\$80.00
iH160 (LV STAGE N+)	40809081	\$80.00



CANNED MOTORS

MODEL(S)	PART #	PRICE
iH80	07113751	\$2,300.00
iH160 (BEFORE MAY 2002)	07113723	\$2,300.00
iH160 (AFTER MAY 2002)	07113750	\$2,150.00
HCMB600/1000 (2.2/2.6KW)	07113753	\$2,800.00
HMB1800/2400 (HEAC) (2.9/3.5KW)	07113751	\$3,200.00
HMB1800/2400 (2.9/3.5KW)	07113711	\$2,800.00



SHAFTS

MODEL(S)	PART #	PRICE
iH80 (Y SHAFT)	40801722	\$450.00
iH80 (X SHAFT)	40809720	\$1,375.00
iH160 (Y SHAFT)	40803719	\$475.00
iH160 (X SHAFT)	40803720	\$1,425.00



HEADPLATE

MODEL(S)	PART #	PRICE
iH80/160	40819715	\$1,625.00

OTHER SPARES

MODEL(S)	PART #	PRICE
iH80/160 (SHIM, .07)	40801057	\$8.00
iH80/160 (SHIM, .10)	40801058	\$8.00
iH80/160 (SHIM, .125)	40801059	\$8.00
iH80/160 (SHIM, .04)	40801078	\$11.00
iH80/160 (GEAR SPACER)	40801049	\$18.00
iH80/160 (SIGHT GLASS)	29201004	\$9.50
iH80/160 (WOODRUFF KEY, 7/8X3/4)	29201040	\$4.50



KIT COMPONENTS

PART NUMBER	ITEM DESCRIPTION	iH80	iH600/1000	iH160	iH160	HMB600/1000	HMB1800/2400
		MAJOR 40801800	MAJOR 40801890	MAJOR 40803800	MAJOR 40803890	BOOSTER 30305800	BOOSTER 30318800
A20408002	BEARING, ANGULAR CONTACT, 7206B		2			2	
A20403033	BEARING, BALL, S-ROW, 100 X 55 X 21		2			2	
A20403028	BEARING, BALL, S-ROW, 62 X 30 X 16	2	2	2	2		
A20403134	BEARING, CAGED HYBRID A/C	2	2	2	2		
A20403038	BEARING, DEEP GROOVE BALL				4		4
A30305056	BEARING, SUPPORT		2	2	2	2	
212090020	CIRCLIP, EXT, 18.2 OD X 7.6 ID	1	3	1	3	2	2
212090031	CIRCLIP, EXT, 47.8 OD X 33.2 ID		1			1	
212090036	CIRCLIP, EXT, 63.0 OD X 49.0 ID				1		1
A22305073	FILTER, GEARBOX PURGE	1	1	1	1		
A22304212	FILTER, SPINNING, 52 ID				1		1
A22304204	FILTER, SPINNING, HCMB & LCMB		1			1	
A22304205	FILTER, STATIC		1		1	1	1
A25908195	FLOAT, VALVE, NON-RETURN	1	1	1	1		
A24301041	KEY, WOODRUFF, NON STD 7/8", TAPPED			2	2		
A24301040	KEY, WOODRUFF, NON-STD, 7/8"	2	2		1		1
A24301051	KEY, WOODRUFF, SPECIAL, 7/8" X 1/4"				1		1
H02124088	O'RING, 32 ID X 3.0		2			2	
H02124174	O'RING, 77.0 ID X 2.5		4			4	
22185-042	O'RING, G40 SEIKO SEIKI		1		1	1	1
H02115002	O'RING, METAL, 26.9 ID X 2.4	1	1	1	1		
H02124171	O'RING, METRIC SPECIAL, 1310-35	1	2	1	2	1	1
H02124172	O'RING, METRIC SPECIAL, 2155-35	1	2	1	1	1	
H02124173	O'RING, METRIC SPECIAL, 2780-35		2			2	
H02126110	O'RING, VITON, 0.862 ID X .103	2	4	2	6	2	4
H02126028	O'RING, VITON, 1.234 ID X .139	5	7	5	7	2	2
H02122033	O'RING, VITON, 11.6 ID X 2.4	2	4	2	4	2	2
H02122036	O'RING, VITON, 14.6 ID X 2.4	2	2	2	2		
H02124181	O'RING, VITON, 179.0 ID X 3.5				2		2
H02122017	O'RING, VITON, 19.1 ID X 1.6	2	4	2	6	2	4
H02122041	O'RING, VITON, 19.6 ID X 2.4				8		8
B74951092	O'RING, VITON, 23.5 ID X 2		1		1	1	1
H02132000	O'RING, VITON, 278.0 ID X 3.53	6	6	6	6		
H02124182	O'RING, VITON, 290.0 ID X 3.5				2		2
H02126053	O'RING, VITON, 3.10 ID X .210	1	1	1	1		
H02124183	O'RING, VITON, 312.0 ID X 3.5				1		1
H02122049	O'RING, VITON, 39.6 X 2.4				8		8
H02126063	O'RING, VITON, 4.35 ID X .210			1	3		2
H02122200	O'RING, VITON, 47.0 ID X 3.0				2		2
H02124192	O'RING, VITON, 49.15 ID RECT	2	2	2	2		
H02124030	O'RING, VITON, 49.35 ID RECT		4			4	
H02122079	O'RING, VITON, 49.5 ID X 3.0	1	1	1	2		1
H02122004	O'RING, VITON, 6.1 ID X 1.6	5	7	5	9	2	4
H02122057	O'RING, VITON, 61.6 ID X 2.4				6		6
H02122082	O'RING, VITON, 64.5 ID X 3.0		1			1	
H02122085	O'RING, VITON, 79.5 ID X 3.0	1	2	1	2	1	1
H02124020	O'RING, VITON, 8.0 ID X 3.5		1			1	
H02122195	O'RING, VITON, 80.0 ID X 2.5	2	2	2	2		
H02124179	O'RING, VITON, 85.0 ID X 3.5				4		4
H02122007	O'RING, VITON, 9.1 ID X 1.6	5	9	5	9	4	4
H02122088	O'RING, VITON, 94.5 ID X 3.0	1	1				
212174255	PIN, LIGHT DUTY, SS, 4 DIA X 12 LG				2		2
A26501054	PLUG, SILICONE	1	2	1	2	1	1
H02109034	SEAL, MSE, 57.7 OD X 54.7 ID	2	2	2	2		
A27160012	SEAL, OIL, HMB1800				8		8
A27160011	SEAL, OIL, IH BOOSTER		4			4	
40801097	SEAL, ROTARY CARTRIDGE, L.H.	1	1	1	1		
40801096	SEAL, ROTARY CARTRIDGE, R.H.	1	1	1	1		
A29201004	SIGHT GLASS	1	1	1	1		
218984731	SPRING, WAVED, 42 OD X 35 ID	1	1	1	1		
218984732	SPRING, WAVED, 62 OD	2	2	2	2		
24301040	WOODRUFF KEY, 7/8 X 1/4 STEEL	8	8	8	8		



KITS

KIT BILL OF MATERIALS CAN BE FOUND LISTED ON THE 'KIT COMPONENTS' PAGES IMMEDIATELY FOLLOWING CORRESPONDING PUMP PAGES.

OVERHAUL KITS

MAJOR OVERHAUL KITS INCLUDE PUMP & MOTOR BEARINGS, INNER & OUTER RINGS, HEADPLATE SLEEVE, LIP SEALS, O-RINGS, SIGHT GLASS, COUPLING ELEMENT, SHIMS, VALVES, MOTOR GASKETS & OTHER COMPONENTS FOR MAJOR OVERHAUL.

MODEL(S)	PART #	PRICE
iL70 (PUMP KIT)	40802800	\$1,000.00



PUMP & BOOSTER REPAIR KITS

PUMP & BOOSTER REPAIR KITS INCLUDE ALL COMPONENTS OF OVERHAUL KITS AND BOOSTER KITS FOR A MAJOR OVERHAUL.

MODEL(S)	PART #	PRICE
iL600 (PUMP & BOOSTER KIT)	40802890	\$1,600.00



FEATURED SPARES

ALL AVAILABLE SPARES FOR THIS SERIES CAN BE FOUND LISTED ON THE 'INDIVIDUAL SPARES' PAGES AT THE END OF THIS SECTION.

END COVER

MODEL(S)	PART #	PRICE
iL70	40801717	\$675.00



SHAFT SEALS

MODEL(S)	PART #	PRICE
iL70	40805732	\$63.00

STATORS

MODEL(S)	PART #	PRICE
iL70 (2ND STAGE)	40802711	\$820.00
iL70 (3RD STAGE)	40802712	\$820.00
iL70 (4TH STAGE)	40802713	\$880.00
iL70 (HV STATOR)	40802710	\$590.00
iL70 (LV STATOR)	40802714	\$880.00



CANNED MOTORS

MODEL(S)	PART #	PRICE
iL70 (HEAC)	07113732	\$1,800.00
iL70	07113717	\$2,250.00

TIMING GEARS

MODEL(S)	PART #	PRICE
iL70/iL600	22903759	\$1,100.00



ROTORS (CLAW)

MODEL(S)	PART #	PRICE
iL70 (2ND STAGE X)	40802724	\$280.00
iL70 (2ND STAGE Y)	40802725	\$280.00
iL70 (3RD STAGE X)	40802726	\$280.00
iL70 (3RD STAGE Y)	40802727	\$280.00
iL70 (4TH STAGE X)	40802728	\$240.00
iL70 (4TH STAGE Y)	40802729	\$240.00
iL70 (HV ROTOR)	40802723	\$280.00
iL70 (HV ROTOR)	40802730	\$240.00



GEAR COVER

MODEL(S)	PART #	PRICE
iL70	40801786	\$1,150.00

SHAFTS

MODEL(S)	PART #	PRICE
iL70 (Y SHAFT)	40802722	\$1,900.00
iL70 (X SHAFT)	40805720	\$500.00

HEADPLATE

MODEL(S)	PART #	PRICE
iL70	40802715	\$1,625.00

KITS

KIT BILL OF MATERIALS CAN BE FOUND LISTED ON THE 'KIT COMPONENTS' PAGES IMMEDIATELY FOLLOWING CORRESPONDING PUMP PAGES.

BOOSTER REPAIR KITS

BOOSTER REPAIR KITS INCLUDE SHADT SEALS, GASKETS, SLEEVES, SHIMS, FILTERS & BEARINGS (AS REQUIRED) FOR A COMPLETE OVERHAUL OF BOTH THE DRIVE SECTION & PUMPING MECHANISM OF BOOSTER PUMPS.

MODEL(S)	PART #	PRICE
HMB600 (BOOSTER KIT)	30305800	\$650.00



FEATURED SPARES

ALL AVAILABLE SPARES FOR THIS SERIES CAN BE FOUND LISTED ON THE 'INDIVIDUAL SPARES' PAGES AT THE END OF THIS SECTION.

SLEEVES

MODEL(S)	PART #	PRICE
iL70 (2ND STAGE Y)	40802016	\$310.00
iL70 (2ND STAGE Y N-)	40802017	\$89.00
iL70 (2ND STAGE Y N+)	40802018	\$399.00
iL70 (3RD STAGE X)	40802033	\$195.00
iL70 (3RD STAGE Y)	40802034	\$247.00
iL70 (3RD STAGE X N-)	40802070	\$60.00
iL70 (3RD STAGE X N+)	40802071	\$177.00
iL70 (3RD STAGE Y N-)	40802072	\$54.00
iL70 (3RD STAGE Y N+)	40802073	\$55.00
iL70 (4TH STAGE X)	40802035	\$195.00
iL70 (4TH STAGE Y)	40802036	\$288.00
iL70 (4TH STAGE X N-)	40802096	\$59.00
iL70 (4TH STAGE X)	40802097	\$59.00
iL70 (4TH STAGE Y N-)	40802098	\$127.00
iL70 (4TH STAGE Y N+)	40802099	\$52.00
iL70 (LV STAGE)	40802040	\$124.00
iL70 (LV STAGE N-)	40802094	\$82.00
iL70 (LV STAGE N+)	40802095	\$202.00

PISTON RINGS

MODEL(S)	PART #	PRICE
iL70 (64MM)	40801055	\$31.94
iL70 (57MM)	40801056	\$31.02
iL70 (68MM)	40802085	\$33.02

OTHER SPARES

MODEL(S)	PART #	PRICE
iL70 (SHIM, .07)	40802057	\$8.00
iL70 (SHIM, .10)	40802058	\$8.00
iL70 (SHIM, .125)	40802059	\$8.00
iL70 (SHIM, .04)	40802078	\$11.00
iL70 (GEAR SPACER)	40801049	\$18.00
iL70 (SIGHT GLASS)	29201004	\$9.50
iL70(WOODRUFF KEY, 7/8X3/4)	24301040	\$4.50



KIT COMPONENTS

PART NUMBER	ITEM DESCRIPTION	iL70 MAJOR 40802800	iL600 MAJOR 40802890	HMB600/1000 BOOSTER 30305800
A20408002	BEARING, ANGULAR CONTACT, 7206B		2	2
A20403033	BEARING, BALL, S-ROW, 100 X 55 X 21	2	4	2
A20403028	BEARING, BALL, S-ROW, 62 X 30 X 16	2	2	
A30305056	BEARING, SUPPORT		2	2
212090020	CIRCLIP, EXT, 18.2 OD X 7.6 ID	2	4	2
212090031	CIRCLIP, EXT, 47.8 OD X 33.2 ID	1	2	1
A40801050	DISC,CLAMPING	2	2	
A22304204	FILTER, SPINNING, HCMB & LCMB		1	1
A22304310	FILTER, SPINNING, LCDP70	1	1	
A22304205	FILTER, STATIC		1	1
A24301041	KEY, WOODRUFF, NON STD 7/8", TAPPED	2	2	
24301040	KEY,WOODRUFF,7/8 X 1/4", STEEL	8	8	
A26440007	LOCKING ELEMENT, 32 X 36	2	2	
H02124088	O'RING, 32 ID X 3.0	4	6	2
H02124174	O'RING, 77.0 ID X 2.5		4	4
22185-042	O'RING, G40 SEIKO SEIKI		1	1
H02115002	O'RING, METAL, 26.9 ID X 2.4	1	1	
H02124171	O'RING, METRIC SPECIAL, 1310-35	1	2	1
H02124172	O'RING, METRIC SPECIAL, 2155-35	1	2	1
H02124173	O'RING, METRIC SPECIAL, 2780-35	6	8	2
H02126110	O'RING, VITON, 0.862 ID X .103	2	4	2
H02126028	O'RING, VITON, 1.234 ID X .139	4	6	2
H02122033	O'RING, VITON, 11.6 ID X 2.4	2	4	2
H02122036	O'RING, VITON, 14.6 ID X 2.4	1	1	
H02122017	O'RING, VITON, 19.1 ID X 1.6	2	4	2
B74951092	O'RING, VITON, 23.5 ID X 2		1	1
H02126053	O'RING, VITON, 3.10 ID X .210	1	1	
H02124030	O'ring, Viton, 49.35 ID Rect	4	8	4
H02122079	O'ring, Viton, 49.5 ID x 3.0	1	1	
H02122004	O'ring, Viton, 6.1 ID x 1.6	2	4	2
H02122082	O'ring, Viton, 64.5 ID x 3.0		1	1
H02122085	O'ring, Viton, 79.5 ID x 3.0	1	2	1
H02124020	O'ring, Viton, 8.0 ID x 3.5	1	2	1
H02122195	O'ring, Viton, 80.0 ID x 2.5	2	2	
H02122196	O'ring, Viton, 84.0 ID x 1.5	2	2	
H02122191	O'ring, Viton, 84.0 ID x 2.5	2	2	
H02122007	O'ring, Viton, 9.1 ID x 1.6	4	8	4
A40805018	Oil Thrower	2	2	
H03517002	Plug, Pressure, Taper 3/8" BSP	1	1	
A26501054	Plug, Silicone		1	1
40801056	Ring,Piston,57 Dia (C.I.)	2	2	
40801055	Ring,Piston,64 Dia (C.I.)	2	2	
40802085	Ring,Sealing,68 Dia	4	4	
A27160011	Seal, Oil, iH Booster		4	4
40805732	Seal,Transit,Packed Spare	2	2	
A29201004	Sight Glass	1	1	
218984943	Spring,Disc, 29 OD x 13 ID x 3	2	2	
218984944	Spring,Disc, 39 OD x 17 ID x 4	2	2	

NOTE

GENUINE KITS & SPARES: PRECISION PLUS SUPPLIES GENUINE EDWARDS OEM KITS, SPARES & ACCESSORIES FOR EDWARDS DP/QDP/IQDP 40/80 DRY PUMPS.

KITS

KIT BILL OF MATERIALS CAN BE FOUND LISTED ON THE 'KIT COMPONENTS' PAGES IMMEDIATELY FOLLOWING CORRESPONDING PUMP PAGES.

MAJOR OVERHAUL KITS

MAJOR OVERHAUL KITS INCLUDE PUMP & MOTOR BEARINGS, INNER & OUTER RINGS, HEADPLATE SLEEVE, LIP SEALS, O-RINGS, SIGHT GLASS, COUPLING ELEMENT, SHIMS, VALVES, MOTOR GASKETS & OTHER COMPONENTS FOR MAJOR OVERHAUL.

MODEL(S)	PART #	PRICE
DP/QDP/IQDP 40	40130300D40	\$1000.00
DP/QDP/IQDP 80	40130300D80	\$1000.00



BOOSTER REPAIR KITS

BOOSTER REPAIR KITS INCLUDE SHAFT SEALS, GASKETS, SLEEVES, SHIMS, FILTERS & BEARINGS (AS REQUIRED) FOR A COMPLETE OVERHAUL OF BOTH THE DRIVE SECTION & PUMPING MECHANISM OF BOOSTER PUMPS. BOOSTER KITS ARE DESIGNED FOR USE IN EITHER CONICAL OR PRE-CONICAL VERSIONS OF PUMP.

MODEL(S)	PART #	PRICE
QMB/EH 250/500	30151800	\$407.00
QMB/EH 1200	30551800	\$689.00



FEATURED SPARES

ALL AVAILABLE SPARES FOR THIS SERIES CAN BE FOUND LISTED ON THE 'INDIVIDUAL SPARES' PAGES AT THE END OF THIS SECTION.

HEADPLATES

MODEL(S)	PART #	PRICE
DP/QDP/IQDP 40/80 (LV STAGE)	40090702	\$950.00



STATORS

MODEL(S)	PART #	PRICE
DP/QDP/IQDP 40 (2ND STAGE)	40001702	\$950.00
DP/QDP/IQDP 40 (3RD STAGE)	40001703	\$950.00
DP/QDP/IQDP 40 (LV STAGE)	40001704	\$950.00
DP/QDP/IQDP 40 (HV STAGE)	40001741	\$950.00
DP/QDP/IQDP 80 (2ND STAGE)	40101702	\$950.00
DP/QDP/IQDP 80 (3RD STAGE)	40101703	\$950.00
DP/QDP/IQDP 80 (LV STAGE)	40101704	\$950.00
DP/QDP/IQDP 80 (HV STAGE)	40101741	\$950.00



SPACER SLEEVES

MODEL(S)	PART #	PRICE
DP/QDP/IQDP 40/80 (HEADPLT)	27820038	\$80.00
DP/QDP/IQDP 40/80 (2ND STAGE)	27820030	\$80.00
DP/QDP/IQDP 40/80 (3RD STAGE)	27820029	\$80.00
DP/QDP/IQDP 40/80 (LV STAGE)	27820028	\$80.00



ROTORS (CLAW)

MODEL(S)	PART #	PRICE
DP/QDP/IQDP 40 (2ND X STG)	26401140	\$250.00
DP/QDP/IQDP 40 (2ND Y STG)	26401141	\$250.00
DP/QDP/IQDP 40 (3RD X STG)	26401142	\$250.00
DP/QDP/IQDP 40 (3RD Y STG)	26401143	\$250.00
DP/QDP/IQDP 40 (LV X STG)	26401144	\$250.00
DP/QDP/IQDP 40 (LV Y STG)	26401145	\$250.00
DP/QDP/IQDP 80 (2ND X STG)	40191010	\$250.00
DP/QDP/IQDP 80 (2ND Y STG)	40191011	\$250.00
DP/QDP/IQDP 80 (3RD X STG)	40191012	\$250.00
DP/QDP/IQDP 80 (3RD Y STG)	40191013	\$250.00
DP/QDP/IQDP 80 (LV X STG)	40191014	\$250.00
DP/QDP/IQDP 80 (LV Y STG)	40191015	\$250.00



SHAFTS

MODEL(S)	PART #	PRICE
DP/QDP/IQDP 40 (DRIVEN X STG)	26401733	\$775.00
DP/QDP/IQDP 40 (DRIVEN Y STG)	26401732	\$775.00
DP/QDP/IQDP 80 (DRIVEN X STG)	26401775	\$775.00
DP/QDP/IQDP 80 (DRIVEN Y STG)	26401776	\$775.00



TIMING GEARS

MODEL(S)	PART #	PRICE
DP 40/80 (PAIR)	22903048	\$548.00



MOTORS

MODEL(S)	PART #	PRICE
QDP 40 230/460V - 60HZ 3PH	A07113770	\$1466.00
QDP 80 230/460V - 60HZ 3PH	A07115770	\$1668.00

KITS

KIT BILL OF MATERIALS CAN BE FOUND LISTED ON THE 'KIT COMPONENTS' PAGES IMMEDIATELY FOLLOWING CORRESPONDING PUMP PAGES.

SILENCER SERVICE KITS

SILENCER SERVICE KITS INCLUDE ALL SEALS & OTHER COMPONENTS TO COMPLETE REGULAR PREVENTATIVE MAINTENANCE OF EXHAUST SILENCERS - RECOMMENDED EVERY THREE MONTHS.

MODEL(S)	PART #	PRICE
QDP 40/80	38611400	\$270.00
IQDP 40/80	38611820	\$475.00

EXHAUST CHECK VALVE SERVICE KITS

EXHAUST CHECK VALVE KITS INCLUDE ALL SEALS & OTHER COMPONENTS TO COMPLETE REGULAR PREVENTATIVE MAINTENANCE OF EXHAUST VALVES (IF FITTED) - RECOMMENDED EVERY THREE MONTHS.

MODEL(S)	PART #	PRICE
QDP/IQDP 40/80	44003820	\$135.00

TCV WATER VALVE REPAIR KITS

MODEL(S)	PART #	PRICE
QDP/IQDP 40/80 (DANFOSS)	28702019	\$259.00
QDP/IQDP 40/80 (SLOTTED)	52840830	\$359.00



TCV WATER MANIFOLD ASSEMBLIES

MODEL(S)	PART #	PRICE
QDP/IQDP 40/80	52840029	\$855.00



FEATURED SPARES

ALL AVAILABLE SPARES FOR THIS SERIES CAN BE FOUND LISTED ON THE 'INDIVIDUAL SPARES' PAGES AT THE END OF THIS SECTION.

IQDP ELECTRONICS MODULE FUSES

MODEL(S)	PART #	PRICE
PACKAGE 2	37207801	\$85.72
PACKAGE 3	37207802	\$85.72
PACKAGE 2/10 EACH	37207803	\$85.72



GAS MODULES

MODEL(S)	PART #	PRICE
QDP 40/80	52805000	\$5817.00



EXHAUST CHECK VALVES

MODEL(S)	PART #	PRICE
QDP/IQDP 40/80	44003000	\$791.00

EXHAUST SILENCERS (CLEANABLE)

MODEL(S)	PART #	PRICE
QDP/IQDP 40/80	52819000	\$1739.00



EXHAUST TEMPERATURE SENSORS

MODEL(S)	PART #	PRICE
QDP 40/80	53207000	\$534.00



N2 FLOW SWITCHES

MODEL(S)	PART #	PRICE
QDP 40/80	10000401	\$1321.00

MOTOR TEMPERATURE SENSORS

MODEL(S)	PART #	PRICE
QDP 40/80	53220032	\$145.00



PUMP DISPLAY MODULES

MODEL(S)	PART #	PRICE
IQDP 40/80	37209000	\$1515.00



ELECTRIC MODULES (COMPLETE)

MODEL(S)	PART #	PRICE
IQDP 40/80	37207800	\$4897.00

WATER FLOW SWITCHES

MODEL(S)	PART #	PRICE
IQDP 40/80	53249000	\$779.00



SENSOR MODULES

MODEL(S)	PART #	PRICE
IQDP 40/80	37208800	\$3077.00



WATER CONNECTORS

MODEL(S)	PART #	PRICE
FEMALE QUICK CONNECT	03530015	\$65.00
MALE QUICK CONNECT	03530016	\$84.66



THERMAL SNAP SWITCHES

MODEL(S)	PART #	PRICE
88 DEGREE C	21913402	\$299.00
95 DEGREE C	24867020	\$521.00
UPGRADE KIT (80 TO 88 DEG C.)	53199011	\$506.00

KIT COMPONENTS

PART NUMBER	ITEM DESCRIPTION	DP40,QDP40,iQDP40	DP80,QDP80,iQDP80	QMB250,QMB500	QMB1200
		MAJOR 40130300D40	MAJOR 40130300D80	BOOSTER 30151800	BOOSTER 30551800
218430250	1/4" BSW X 1/2" SSS 3MM HEX	2	2		
27131-066	12 ODX6 IDX.7THK COPPER WASHER	3			
27132-031	15 ODX8 IDX.7THK COPPER WASHER		3		
A52840217	3T04 INTERSTAGE VALVE	1	1		
21631-027	BEARING REF 6205-2Z-C3	2			
21631-026	BEARING REF 6206-2Z-C3		2		
20403025	BEARING,BALL,S-ROW,52X20X15			2	
20403027	BEARING,BALL,D-ROW,62X25X25,PACK OF 2	1	1		
20404023	BEARING,BALL,S-ROW,62X25X17,PACK OF 2	1	1		
20403010K	BEARING,W/KRYTOX GREASE & PTF			2	
20403027	D-ROW BEARING, 62X25X25 - PACK OF 2	1	1		
A52880014	DISK	1	1		
H02104008	DOWTY SEAL 1" BSP MKH				1
A40430300	DP40/80 MODULE KIT (WITHOUT BEARINGS)	1	1		
A22302022	DUST SEAL	2	2		
A22302008	DUST SEAL FELT42MM X 30.5MM X 6MM				4
A22302021	FELT FILTER	1	1		
A22302015	FILTER DISC				5
A22302016	FILTER DISC			2	
22302015	FILTER,FELT			11	
A21071033	FLEXIBLE COUPLING ELEMENT BO	1	1		
A25904605	GAS BALLAST VALVE	1	1		
A27159548	GASKET EH1200 VITON« WAS 501NIT				1
27159438	GASKET,EH250/500			1	
27159547	GASKET,VITON			1	
870017	GREASE, FOMBLIN, 1 OZ TUBE	1	1		
A20405030	INNER RING	2	2		
A20405017	INNER RING 25 X 30 X 16	2	2		
A20405049	INNER RING EH240 EH250			4	
A20405050	INNER RING FOR EH1200 EDD1200				4
24301016	KEY, SHAFT, 8 X 7 X 30		6		
24301013	KEY,SHAFT,8X5X20MM		1		
24301021	KEY,SHAFT,8X7X16MM	8	1		
A20001085	LABEL - DIRECTION ARROW	1	1		
A52879002	LABEL KIT QDP80 6KW		1		
H02109053	LIPSEAL QDP/EHB1200	4	4		4
A20403031	MAIN BEARING EH/QMB1200				4
A27160001	MOTOR GASKET QDP 40	1	1		
A27160002	MOTOR GASKET QDP 80		1		
A20001235	MOTOR RATING LABEL 2.2KW	1			
A20001237	MOTOR RATING LABEL QDP80 4KW		1		
H02122033	O RING				1
H02125260	O RING 022 VOR				4
H02122055	O RING 0576-24 VIT	2	2		
H02124184	O RING 242.76ID X 3.0SEC VIT	1	1		
H02124025	O RING 28.0IDX5SECT (VITON)	1	1		
H02126165	O RING 61 X 9 ID 3.53 VIT	4	4		2
H02122031	O RING VIT 0096-24				2
H02126028	O RING VIT 0218	4	4		6
H02122159	O RING VIT 299.3ID X 5.7 SEC PK1				2
23714-034	O RING VITON®				8
H02124185	O'RING SPECIAL SHAPED (VITON)	1	1		
H02122009	O'RING VIT 11.1ID X 1.6	5	5		
H02122035	O'RING VIT 13.6ID X 2.4	1	1		
H02122097	O'RING VIT 139.5ID X 3.0	1	1		
H02122037	O'RING VIT 15.6ID X 2.4	1	1		
H02122108	O'RING VIT 194.5ID X 3.0	3	3		
H02122110	O'RING VIT 209.5ID X 3.0	1	1		
H02122042	O'RING VIT 21.6ID X 2.4	2	2		
H02122043	O'RING VIT 24.6ID X 2.4	1	1		
H02122084	O'RING VIT 74.5ID X 3.0	1	1		
02122079	O'RING, VITON, 49.5 X 3	2	2		
02122009	O'RING,BUNA,11.1 X 1.6 MM			4	
02120023	O'RING,BUNA,35.1 X 1.6 MM			4	

KIT COMPONENTS (CONT.)

PART NUMBER	ITEM DESCRIPTION	DP40,QDP40,iQDP40	DP80,QDP80,iQDP80	QMB250,QMB500	QMB1200
		MAJOR A40130300D40	MAJOR A40130300D80	BOOSTER 30151800	BOOSTER 30551800
02120077	O'RING,BUNA,42.5 X 3 MM			1	
02122091	O'RING,VITON,109.5 X 3 MM			1	
02125023	O'RING,BUNA,23.39 X 3.53 MM	1	1		
02125055	O'RING,BUNA,85.09 X 5.33 MM	2	2		
02126121	O'RING,VITON,15.54 X 2.62 MM			2	
23714036	O'RING,VITON,150 X 3 MM			1	
23714034	O'RING,VITON,19 X 3 MM			6	
23714037	O'RING,VITON,233 X 3 MM			1	
02126028	O'RING,VITON,31.34 X 3.53 MM			4	
23712-041	ORING VIT 44.6ID X 2.4SEC				4
23714-039	ORING VIT 0.500ID X.103SECIN!				1
H02126121	ORING VIT 0.625ID X.103SECIP!				5
23714-038	ORING VIT 174.5ID X 3.0SECIN!				1
H02126028	ORING VIT 1.234ID X.139	4	4		6
H02126165	ORING VIT 2.437ID X.139	4	4		2
A27160004	PRINTED GASKET QMB1200				1
H02109053	PTFE LIP SEAL - DRY PUMPS	4	4		4
A26410008	RETAINER	2	2		
20405049	RING,INNER,EH250/500			4	
H02109101	ROTARY SHAFT SEAL	2	2		
23754-016	RUBBER BONDED SEAL				5
A27159439	RUBBER SEAL RING EH1200				1
20404023	S-ROW BEARING, 62X25X17 - PACK OF 2	1	1		
H02109093	SEAL, 30X42X8 U/D	1	1		
02104008	SEAL,DOWTY,BUNA,1 BSP			1	
23754016	SEAL,DOWTY,BUNA,1/2 BSP			2	
22302005	SEAL,DUST			4	
02109120	SEAL,SHAFT,CCW(CONICAL MODELS)			1	
02109052	SEAL,SHAFT,TEFLON,RED CASE			4	
02109075	SEAL,SHAFT,VITON			4	
A27165022	SHIM 0.03 DP40/80	4	4		
A27165023	SHIM 0.05 DP40/80	4	4		
A27165024	SHIM 0.10 DP40/80	4	4		
A27165025	SHIM 0.20 DP40/80	4	4		
A27165033	SHIM DP40/80	4	4		
A30751825	SHIM SPARE SET EH/QMB12/26/4200				1
27165032	SHIM,.125MM,EH250/ EH500			3	
27165008	SHIM,0.20MM EH250			3	
27165009	SHIM,0.25MM,EH250/ EH500			3	
27165018	SHIM,0.30MM EH250			3	
27165010	SHIM,0.35MM EH250			3	
27165011	SHIM,0.40MM EH250			3	
A29201004	SIGHT GLASS	1	1	2	3
A27801025	SLEEVE HARD EH250/500			2	
A27802027	SLEEVE DP40	1			
27820038	SLEEVE DP40/80	2	2		
A27802021	SLEEVE DP80		1		
A27802035	SLEEVE HARD DP250/500			1	
A27802036	SLEEVE HARD EH1200				1
27802035	SLEEVE,HARDENED,CONICAL			1	
27801025	SLEEVE,SHAFT,HARD,EH250/500			2	
A27802031	SOFT SLEEVE FOR EH1200 EDD1200				2
A30151805	SPARES KIT BEARINGS DP40/250/500	1	1		
A52840800	SPARES KIT MOTOR REPL. QDP40	1	1		
A30551815	SPARES KIT CON C&O EH/QMB1200				1
A30551820	SPARES KIT MODULE EH/QMB1200				1
H02109100	U/D LIPSEAL LH PTFE, 30X42X8	1	1		
H02126025	VIT 0215 O RING				4
A20404020	VITON SHIELD BALL BEARING				4
H02109143	VITON« SHAFT SEAL 30X42X7 QTY 1				4
H02109144	VITON« SHAFT SEAL 35X47X7 QTY 1				1
E20001063	WARNING SYMBOL	1	1		

KITS

KIT BILL OF MATERIALS CAN BE FOUND LISTED ON THE 'KIT COMPONENTS' PAGES IMMEDIATELY FOLLOWING CORRESPONDING PUMP PAGES.

COMPLETE PUMP MODULES

INNER MODULES ARE FULLY ASSEMBLED USING NEW COMPONENTS, AND ARE TESTED AND READY FOR INSTALLATION. MODULES INCLUDE ALL REQUIRED GASKETS.

MODEL(S)	PART #	PRICE
RV 3	A65201032	\$1354.00
RV 5	A65301032	\$1532.00
RV 8	A65401032	\$1751.00
RV 12	A65501032	\$1868.00

BLADE KITS

BLADE KITS INCLUDE VANES, SPRINGS & PINS (AS REQUIRED).

MODEL(S)	PART #	PRICE
RV 3	65201130	\$61.20
RV 5	65301130	\$73.44
RV 8	65401130	\$86.70
RV 12	65501130	\$99.00

CLEAN OVERHAUL KITS

CLEAN OVERHAUL KITS INCLUDE COUPLING ELEMENTS, O-RINGS, GASKETS, AIRBLEED ASSEMBLY, DUCTING SHEET, SHAFT SEALS & OTHER COMPONENTS FOR ROUTINE MAINTENANCE.

MODEL(S)	PART #	PRICE
RV 3/5/8/12 (VITON)	P65201131	\$128.00
RV 3/5/8/12 (BUNA)	P65201137	\$158.00

MAJOR KITS w/BLADES

MAJOR KITS W/BLADES INCLUDE ALL COMPONENTS OF CLEAN OVERHAUL KITS & BLADE KITS FOR MAJOR OVERHAUL.

MODEL(S)	PART #	PRICE
RV 3	65201131RV3	\$165.00
RV 5	65201131RV5	\$179.00
RV 8	65201131RV8	\$194.00
RV 12	65201131RV12	\$224.00



FEATURED SPARES

ALL AVAILABLE SPARES FOR THIS SERIES CAN BE FOUND LISTED ON THE 'INDIVIDUAL SPARES' PAGES AT THE END OF THIS SECTION.

ROTORS

MODEL(S)	PART #	PRICE
RV 3/5 (1ST-HV STAGE)	65201701	\$173.00
RV 8 (1ST-HV STAGE)	65401701	\$179.00
RV 12 (1ST-HV STAGE)	65501701	\$184.00
RV 3/5 (2ND-LV STAGE)	65201703	\$173.00
RV 8/12 (2ND-LV STAGE)	65401703	\$173.00
RV 3/5/8/12 (OIL PUMP)	65201705	\$138.00



STATORS

MODEL(S)	PART #	PRICE
RV 3 (1ST-HV STAGE)	65201700	\$265.00
RV 5 (1ST-HV STAGE)	65301700	\$291.00
RV 8 (1ST-HV STAGE)	65401700	\$316.00
RV 12 (1ST-HV STAGE)	65501700	\$321.00
RV 3/5 (2ND-LV STAGE)	65201702	\$214.00
RV 8/12 (2ND-LV STAGE)	65401702	\$255.00



UNIVERSAL MOTORS

MODEL(S)	PART #	PRICE
RV 3/5/8/12 (PHASE 1)	A65299500	\$1078.00
RV 3/5 (PHASE 3)	A65297000	\$714.00
RV 8/12 (PHASE 3)	A65497000	\$699.00

MIST FILTERS & REPLACEMENT ITEMS

MODEL(S)	PART #	PRICE
EMF 10 (MIST FILTER)	46226000	\$235.00
EMF 10 (FILTER ELEMENT)	22304198	\$90.00
EMF 10 (ODOR ELMT - 5PK)	22304079	\$183.00



SHAFT SLEEVE REPAIR KIT

MODEL(S)	PART #	PRICE
ALL	65201136	\$55.00

RECOMMENDED OILS

TYPE	PART #	PRICE
ULTRAGRADE 19 (1L/1.06QT)	PPUG19001	\$16.00
PLUS FF (1L/1.06QT) FLUSHING FLUID	PPFF001	\$9.75



KIT COMPONENTS

PART NUMBER	ITEM DESCRIPTION	ALL	ALL	RV3	RV5	RV8	RV12
		C & O (VITON) P65201131	C & O (BUNA) P65201137	MAINT. 65201131RV3	MAINT. 65201131RV5	MAINT. 65201131RV8	MAINT. 65201131RV12
A65201005	AIR BLEED ASSY RV	1	1	1	1	1	1
A21071077	COUPLING ELEMENT RV PUMP	1	1	1	1	1	1
A25908183	EXHAUST DIAPHRAGM RV - NIT		1				
A25908123	EXHAUST DIAPHRAGM VITON® RVP	1		1	1	1	1
A20402528	HV BLADE (RV12) CX2						2
A20402525	HV BLADE (RV3) CX2			2			
A20402526	HV BLADE (RV5) CX2				2		
A20402527	HV BLADE (RV8) CX2					2	
H02109066	LIP SEAL VIT 25 35 7	1		1	1	1	1
A20402529	LV BLADE (RV3/5) CX2			2	2		
A20402530	LV BLADE (RV8/12) CX2					2	2
H02120037	O RING	1	1	1	1	1	1
H02120029	O RING 0076-24 NIT.		1				
H02120036	O RING BS 4518	1		1	1	1	1
H02120031	O RING EHB500-1200		1				
23724-073	O RING NIT 21.5 ID X 3.0 SEC	3	3	3	3	3	3
23724-071	O RING NITRILE. INLET VALVE RV	1	1	1	1	1	1
H02120077	O RING REAR COVER	1	1	1	1	1	1
23724-072	O RING SIGHT GLASS RV/E2M18/28/3		1				
H02122031	O RING VIT 0096-24	1		1	1	1	1
H02122083	O RING VIT 695-30	1		1	1	1	1
H02122055	O RING VIT DP40/80	1		1	1	1	1
A20402500	OIL BLADE RVP CX2			1	1	1	1
A27160005	OIL BOX PRINTED GASKET RV	1	1	1	1	1	1
A25908129	OIL PRESSURE VALVE RV	1	1	1	1	1	1
A25908127	OLDHAM COUPLING RV3/5/8/12	1	1	1	1	1	1
23724-070	ORING NIT 32.5ID X 3.0	1	1	1	1	1	1
23722-051	ORING NIT 57.6ID X 2.4SEC!N!		1				
23712-039	ORING VIT 7.6ID X 2.4	1		1	1	1	1
H02126026	ORING VIT 1.109ID X.139	1	1	1	1	1	1
H02109125	OUTER SHAFT SEAL SPACER RV	1	1	1	1	1	1
A27160006	PRINTED GASKET CARTRIDGE RV	1	1	1	1	1	1
A25908226	RV DUMP VALVE	1	1	1	1	1	1
A65201029	RV REED VALVE	1	1	1	1	1	1
H02109133	SEAL 20.30.7 PLN NIT		1				
H02109132	SEAL 25.35.7 PLN NIT		1				
A27160008	SEAL CARRIER GASKET	1	1	1	1	1	1
H02109124	SHAFT SEAL BABSL 20 X 30 X 7 RV	1		1	1	1	1
65201019	SHEET,DUCTING-MTR GS	1		1	1	1	1
20525-048	SPRING (BALLAST CONTROL) ST/ST	1	1	1	1	1	1
20525-047	SPRING (DUMP VALVE) RV	2	1	2	2	2	2
20525-049	SPRING (INLET VALVE) ST/ST RVP	1	1	1	1	1	1
A27160007	TOP PLATE GASKET	1	1	1	1	1	1
A26501047	U SEAL RV - NIT		1				
A26501040	U SEAL VITON	1		1	1	1	1
A26501045	VALVE PAD - NIT		1				
A26501046	VALVE PAD - NIT		1				
A26501039	VALVE PAD - VITON	1		1	1	1	1
A26501036	VALVE PAD E2M1.5 E2M18 PUMP	1		1	1	1	1
27154-018	WASHER SHOULDER	1	1	1	1	1	1

KITS

KIT BILL OF MATERIALS CAN BE FOUND LISTED ON THE 'KIT COMPONENTS' PAGES IMMEDIATELY FOLLOWING CORRESPONDING PUMP PAGES.

BLADE KITS

BLADE KITS INCLUDE VANES, SPRINGS & PINS (AS REQUIRED).

MODEL(S)	PART #	PRICE
E2M 0.7/1/1.5	37101132ED	\$113.00

CLEAN OVERHAUL KITS

CLEAN OVERHAUL KITS INCLUDE SPRINGS, GASKETS, SEAL & OTHER COMPONENTS FOR LIGHT OVERHAUL.

MODEL(S)	PART #	PRICE
E2M 0.7/1/1.5	37101131	\$87.00



MAINTENANCE KITS

MAINTENANCE KITS INCLUDE ALL COMPONENTS OF CLEAN & OVERHAUL KITS & BLADE KITS FOR COMPLETE OVERHAUL.

MODEL(S)	PART #	PRICE
E2M 0.7/1/1.5	37101800ED	\$189.00



FEATURED SPARES

ALL AVAILABLE SPARES FOR THIS SERIES CAN BE FOUND LISTED ON THE 'INDIVIDUAL SPARES' PAGES AT THE END OF THIS SECTION.

STATORS

MODEL(S)	PART #	PRICE
MFG. AFTER NOV 2004	37101737	\$113.00



END PLATES

MODEL(S)	PART #	PRICE
E2M 0.7/1/1.5	37101702	\$136.00

HIGH VACUUM ROTORS

MODEL(S)	PART #	PRICE
E2M 0.7/1/1.5	26401059	\$110.00
MFG. AFTER NOV 2004	26401207	\$124.00



LOW VACUUM ROTORS

MODEL(S)	PART #	PRICE
E2M 0.7/1/1.5	26401060	\$95.47
MFG. AFTER NOV 2004	26401207	\$124.00

MIST FILTERS & REPLACEMENT ITEMS

MODEL(S)	PART #	PRICE
EMF 3 (MIST FILTER)	46220000	\$206.00
EMF 3 (FILTER ELEMENT)	22304197	\$99.00
EMF 3 (ODOR ELMT - 5PK)	22304081	\$122.00



OIL FILTER SCREENS

MODEL(S)	PART #	PRICE
E2M 0.7/1/1.5	22305047	\$11.76



DISTRIBUTOR VALVES

MODEL(S)	PART #	PRICE
E2M 0.7/1/1.5	26501035	\$8.00

RECOMMENDED OILS

TYPE	PART #	PRICE
PLUS 19 (1L/1.06QT) GENERAL PURPOSE OIL	PP19001	\$10.55
PLUS GOLD (1L/1.06QT) FULLY SYNTHETIC OIL	PPGOLD001	\$68.00
PLUS FF (1L/1.06QT) FLUSHING FLUID	PPFF001	\$9.75



KIT COMPONENTS

PART NUMBER	ITEM DESCRIPTION	E2M0.7/1/1.5	E2M0.7/1/1.5
		CLEAN&O/H 37101131	MAINT. 37101800ED
A27929064	5MMA/F ALLEN KEY(L		
A25904600	BALLAST VALVE		
A00906077	BLADE SPRINGS		
A26501005	CLAMP PAD		
H02104001	DOWTY SEAL 1/8" BSP MKA		
H02104003	DOWTY SEAL 3/8" BSP MKC		
25907202	FILTER,BALLAST	1	1
22305047	FILTER,OIL	1	1
A27159606	GASKET SPEEDIVAC2		
27159637	GASKET,OIL BOX	1	1
37125020	GASKET,SIGHT GLASS	1	1
A20402605	HV BLADE SPVAC2 CX2		
22305056	INLET STRAINER MESH	1	1
A25908051	MEMBER,DRIVE	3	3
A26501002	MOUNTING PAD		
H02120115	O RING SEAL SPEEDIVAC2		
H02125013	O'RING NIT ID 13.94 SEC 2.62MM		
02120009	O'RING,BUNA,11.1 X 1.6 MM	1	1
02120034	O'RING,BUNA,12.6 X 2.4 MM	1	1
02120094	O'RING,BUNA,124.5 X 3.0MM	1	1
02124002	O'RING,BUNA,15 X 5 MM	1	1
02120042	O'RING,BUNA,21.6 X 2.4 MM	4	4
02120065	O'RING,BUNA,25 X 3 MM	1	1
02120077	O'RING,BUNA,42.5 X 3 MM	1	1
02120118	O'RING,BUNA,52 X 5.7 MM	2	2
02120028	O'RING,BUNA,6.6 X 2.4 MM	1	1
02120037	O'RING,VITON,15.6 X 2.4 MM	1	1
02125026	O'RING,VITON,28.17 X 3.53 MM	1	1
02126116	O'RING,VITON,7.59 X 2.62 MM	4	4
H02109028	OIL SEAL 16357		
26501036	PAD,CHECK VALVE,GAS BALLAST	1	1
22302019	PAD,FELT	1	1
25908119	PLUG,OIL DRAIN,RV PUMPS	1	1
00714012	PLUG,OIL DRAIN,STEEL	1	1
02104001	SEAL,DOWTY	1	1
02104012	SEAL,DOWTY	1	1
02109078	SEAL,SHAFT	1	1
02109079	SEAL,SHAFT,VIT,UNI-DRT,W/MCASE	1	1
02109099	SEAL,SHAFT,VITON	1	1
A29201003	SIGHT GLASS SP11/E2M0.7/1.5		
27102010	SPRING	1	
27102016	SPRING	2	2
27102021	SPRING	1	1
27102034	SPRING	1	1
A02106012	SPRING		
A27102005	SPRING		
A27102010	SPRING BALLAST EM		1
A00703019	SPRING PIN		
27102036	SPRING,SS,E2M30	2	2
A26501004	VALVE RUBBER		
25906600	VALVE,BALLAST	1	1
26501035	VALVE,DISTRIBUTOR,VITON	1	1
20402150FR	VANE,GX,2ND STAGE		4
20402147FR	VANE,GX,OIL PUMP,E2M1.5		1

KITS

KIT BILL OF MATERIALS CAN BE FOUND LISTED ON THE 'KIT COMPONENTS' PAGES IMMEDIATELY FOLLOWING CORRESPONDING PUMP PAGES.

BLADE KITS

BLADE KITS INCLUDE VANES, SPRINGS & PINS (AS REQUIRED).

MODEL(S)	PART #	PRICE
E2M 2	36001129ED	\$101.00
E2M 5	36101129ED	\$129.00
E2M 8	36201129ED	\$148.00
E2M 12	37001129ED	\$181.00

CLEAN OVERHAUL KITS

CLEAN OVERHAUL KITS INCLUDE SPRINGS, GASKETS, SEAL & OTHER COMPONENTS FOR LIGHT OVERHAUL.

MODEL(S)	PART #	PRICE
E2M 2/5/8	34101131	\$88.00
E2M 12	37001131	\$96.90



MAINTENANCE KITS

MAINTENANCE KITS INCLUDE ALL COMPONENTS OF CLEAN & OVERHAUL KITS & BLADE KITS FOR COMPLETE OVERHAUL.

MODEL(S)	PART #	PRICE
E2M 2	36001800ED	\$157.00
E2M 5	36101800ED	\$194.00
E2M 8	36201800ED	\$209.00
E2M 12	37001800ED	\$237.00



FEATURED SPARES

ALL AVAILABLE SPARES FOR THIS SERIES CAN BE FOUND LISTED ON THE 'INDIVIDUAL SPARES' PAGES AT THE END OF THIS SECTION.

DISTRIBUTOR KITS

MODEL(S)	PART #	PRICE
ALL	36001040	\$26.31



ROTORS

MODEL(S)	PART #	PRICE
E2M 2	26401725	\$263.00
E2M 5	26401728	\$284.00
E2M 8	26401731	\$365.00
E2M 12	26401780	\$415.00



STATORS

LIMITED AVAILABILITY-CHECK WITH CUSTOMER SERVICE

MODEL(S)	PART #	PRICE
E2M 2 (1ST-HV STAGE)	36001730	\$275.00
E2M 5 (1ST-HV STAGE)	36101730	\$356.00
E2M 8 (1ST-HV STAGE)	36201030	\$461.00



MIST FILTERS & REPLACEMENT ITEMS

E2M 2/5/8

MODEL(S)	PART #	PRICE
EMF 10 (MIST FILTER)	46226000	\$235.00
EMF 10 (FILTER ELEMENT)	22304198	\$90.00
EMF 10 (ODOR ELMT - 5PK)	22304079	\$183.00



E2M 12

MODEL(S)	PART #	PRICE
EMF 20 (MIST FILTER)	46229000	\$255.00
EMF 20 (FILTER ELEMENT)	22304199	\$95.00
EMF 20 (ODOR ELMT - 5PK)	22304077	\$193.00



RECOMMENDED OILS

TYPE	PART #	PRICE
PLUS 19 (1L/1.06QT) GENERAL PURPOSE OIL	PP19001	\$10.55
PLUS GOLD (1L/1.06QT) FULLY SYNTHETIC OIL	PPGOLD001	\$68.00
PLUS FF (1L/1.06QT) FLUSHING FLUID	PPFF001	\$9.75



KIT COMPONENTS

PART NUMBER	ITEM DESCRIPTION	E2M2/5/8 CLEAN & O/H 34101131	E2M12 CLEAN&O/H 37001131	E2M2 MAINT. 36001800ED	E2M5 MAINT. 36101800ED	E2M8 MAINT. 36201800ED	E2M12 MAINT. 37001800ED
A11301045	BALLAST VALVE PTFE	1	1	1	1	1	1
27159414SH	DISTRIBUTOR RUBBER	1					
27159414	DISTRIBUTOR,RUBBER	1	1	1	1	1	1
27159440	DISTRIBUTOR,RUBBER	1	1	1	1	1	1
25907200	FILTER,BALLAST	1	1	1	1	1	1
22305003	FILTER,OIL	1	1	1	1	1	1
27159616	GASKET,OIL BOX	1	1	1	1	1	1
02125013	O'RING,BUNA,13.94 X 2.62 MM	1	1	1	1	1	1
02120041	O'RING,BUNA,19.6 X 2.4 MM	1		1	1	1	
02120042	O'RING,BUNA,21.6 X 2.4 MM		1				1
02120072	O'RING,BUNA,35.5 X 3 MM		1				1
02120077	O'RING,BUNA,42.5 X 3 MM	2	2	2	2	2	2
02120004	O'RING,BUNA,6.1 X 1.6 MM	3	3	3	3	3	3
02120028	O'RING,BUNA,6.6 X 2.4 MM	2	2	2	2	2	2
02124086	O'RING,BUNA,86 X 2 MM	1	1	1	1	1	1
02125026	O'RING,VITON,28.17 X 3.53 MM	3	2	3	3	3	2
02126116	O'RING,VITON,7.59 X 2.62 MM	2	2	2	2	2	2
22302013	PAD,FELT	1	1	1	1	1	1
26501029	PAD,VALVE		2				2
29203003	PIN,BLADE SPRING,S/S	4	5	7	8	8	10
00714012	PLUG,OIL DRAIN,STEEL	1	1	1	1	1	1
02104001	SEAL,DOWTY	1	1	1	1	1	1
00906042	SEAL,FILTER,(O'RING)	1	1	1	1	1	1
02109066	SEAL,SHAFT,VIT,E1/E2M2/5/8,RVP	1	1	1	1	1	1
02109067	SEAL,SHAFT,VITON	1	1	1	1	1	1
27102016	SPRING	1	1	1	1	1	1
27102021	SPRING		1				1
A27102010	SPRING BALLAST EM	1	1	1	1	1	1
27102032	SPRING,DISTRIBUTOR	1	1	1	1	1	1
00906077	SPRING,MW	4	5	7	4	8	10
27102029	SPRING,MW	1		1	1	1	
27102033	SPRING,VALVE		2				2
A26501017	VALVE RUBBER LV E2M-12	1	1	1	1	1	1
25906600	VALVE,BALLAST	1		1	1	1	
27159417	VALVE,HV,RUBBER	1		1	1	1	
27159418	VALVE,HV,RUBBER	1		1	1	1	
20402081FR	VANE,GX,1ST STAGE			2			
20402083FR	VANE,GX,1ST STAGE				2		
20402085FR	VANE,GX,1ST STAGE					2	
20402125FR	VANE,GX,1ST STAGE						2
20402079FR	VANE,GX,2ND STAGE			2	2	2	2
20402158FR	VANE,GX,OIL PUMP			1	1	1	1
218990201	WASHER,WAVED	1	1	1	1	1	1

KITS

KIT BILL OF MATERIALS CAN BE FOUND LISTED ON THE 'KIT COMPONENTS' PAGES IMMEDIATELY FOLLOWING CORRESPONDING PUMP PAGES.

BLADE KITS

BLADE KITS INCLUDE VANES, SPRINGS & PINS (AS REQUIRED).

MODEL(S)	PART #	PRICE
E1M 18	34301041ED	\$123.00
E2M 18	36301020ED	\$169.00
E2M 28/30	37301135ED	\$194.00

SEAL KITS

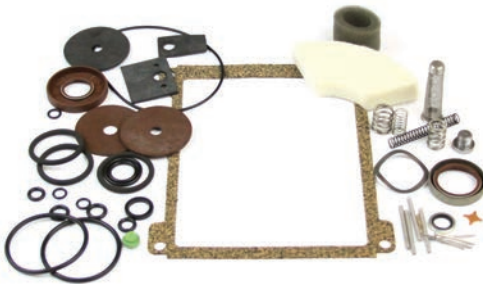
SEAL KITS INCLUDE SEALS, GASKETS, O-RINGS & COUPLINGS (AS REQUIRED).

MODEL(S)	PART #	PRICE
E1M 18, E2M 18	34301820	\$77.52
E2M 28/30	37301820	\$123.00

CLEAN OVERHAUL KITS

CLEAN OVERHAUL KITS INCLUDE SEALS, COUPLING ELEMENT, O-RINGS, GASKETS & OTHER COMPONENTS FOR LIGHT OVERHAUL.

MODEL(S)	PART #	PRICE
E1M 18, E2M 18	36301131	\$112.00
E2M 28/30	37301131	\$133.00



MAINTENANCE KITS

MAINTENANCE KITS INCLUDE ALL COMPONENTS OF CLEAN OVERHAUL KITS & BLADE KITS FOR MAJOR OVERHAUL.

MODEL(S)	PART #	PRICE
E1M 18	34301800ED	\$214.00
E2M 18	36301800ED	\$237.00
E2M 28/30	37301800ED	\$298.00



FEATURED SPARES

ALL AVAILABLE SPARES FOR THIS SERIES CAN BE FOUND LISTED ON THE 'INDIVIDUAL SPARES' PAGES AT THE END OF THIS SECTION.

ROTORS

MODEL(S)	PART #	PRICE
E1M 18	26401747	\$414.00
E2M 18	26401746	\$371.00
E2M 28/30 (1ST-HV STAGE)	26401073	\$587.00
E2M 28/30 (2ND-LV STAGE)	26401771	\$286.00



STATORS

MODEL(S)	PART #	PRICE
E1/2M 18 (1ST-HV STAGE)	34301710	\$434.00
E2M 18 (2ND-LV STAGE)	36301714	\$461.00
E2M 28/30 (1ST-HV STAGE)	37301730	\$524.00
E2M 28/30 (2ND-LV STAGE)	37301731	\$359.00



MIST FILTERS & REPLACEMENT ITEMS

MODEL(S)	PART #	PRICE
E1/2M 18		
EMF 20 (MIST FILTER)	46229000	\$255.00
EMF 20 (FILTER ELEMENT)	22304199	\$95.00
EMF 20 (ODOR ELMT - 5PK)	22304077	\$193.00



E2M 28/30

EMF 30 (MIST FILTER)	46233000	\$768.00
EMF 30 (FILTER ELEMENT)	22304057	\$249.00



RECOMMENDED OILS

TYPE	PART #	PRICE
PLUS 19 (1L/1.06QT) GENERAL PURPOSE OIL	PP19001	\$10.55
PLUS GOLD (1L/1.06QT) FULLY SYNTHETIC OIL	PPGOLD001	\$68.00
PLUS FF (1L/1.06QT) FLUSHING FLUID	PPFF001	\$9.75



KIT COMPONENTS

PART NUMBER	ITEM DESCRIPTION	E1M18,E2M18	E2M28/30	E1M18,E2M18	E2M28/30	E1M18	E2M18	E2M28/30
		SEAL 34301820	SEAL 37301820	CLEAN&O/H 36301131	CLEAN&O/H 37301131	MAINT. 34301800ED	MAINT. 36301800ED	MAINT. 37301800ED
A11301045	BALLAST VALVE PTFE	1	1	1	1	1	1	1
P212081133	C-CLIP		1		1			1
26501032	COUPLING,ELEMENT,E1/E2M18/30	1	1	1	1	1	1	1
H02122012	D1BON 'O'RING 14.1X1.6 SEC		1		1			1
27159430	DISTRIBUTOR,RUBBER	1	1	1	1	1	1	1
02308043	FILTER,GAS BALLAST	2	2	2	2	2	2	2
27159532	GASKET,E2M28		1		1			1
27159635	GASKET,OIL BOX	1	1	1	1	1	1	1
27159530	GASKET,SIGHT GLASS	1	1		1			1
27159638	GASKET,SIGHT GLASS	1	1		1			1
02308044	GAUZE,GAS BALLAST		2	2	2	2	2	2
H02122037	O RING E1/E2M80	1						
02125300	O'RING,BUNA,107.6 X 2.6 MM		1		1			1
02122009	O'RING,BUNA,11.1 X 1.6 MM				2			2
02120033	O'RING,BUNA,11.6 X 2.4 MM	1		1		1	1	
02120067	O'RING,BUNA,27.5 X 3 MM	1		1		1	1	
02124005	O'RING,BUNA,28 X 5 MM		1					
02120068	O'RING,BUNA,30 X 3 MM		1		1			1
02120072	O'RING,BUNA,35.5 X 3 MM	1	1	1	1	1	1	1
02120078	O'RING,BUNA,44.5 X 3 MM	2	1	2	2	2	2	2
02120028	O'RING,BUNA,6.6 X 2.4 MM	8	7	8	9	8	8	9
02120057	O'RING,BUNA,61.6 X 2.4 MM	1		1		1	1	
02120085	O'RING,BUNA,79.5 X 3 MM		1		1			1
02120087	O'RING,BUNA,89.2 X 3 MM		1		1			1
02120089	O'RING,BUNA,99.5 X 3 MM	2		2		2	2	
02122009V	O'RING,VITON,11 X 1.5 MM		2					
02120035	O'RING,VITON,13.6 X 2.4 MM	1		1		1	1	
02122035	O'RING,VITON,13.6 X 2.4 MM		1		1			1
02122037	O'RING,VITON,15.3 X 2.4 MM		2	1	2	1	1	2
02120037	O'RING,VITON,15.6 X 2.4 MM	1		1		1	1	
02122108	O'RING,VITON,194.5 X 3MM	1	1	1	1	1	1	1
02126026	O'RING,VITON,28 X 3.5 MM		2					
02125026	O'RING,VITON,28.17 X 3.53 MM	2		2	2	2	2	2
02122083	O'RING,VITON,69.5X3MM	1	1	1	1	1	1	1
02126116	O'RING,VITON,7.59 X 2.62 MM	2	2	2	2	2	2	2
A22305008	OIL FILTER ASSY			1	1	1	1	1
A01403030	OIL FILTER SEAL	2	2	2	2	2	2	2
26501036	PAD,CHECK VALVE,GAS BALLAST	1						
22302017	PAD,FELT	1	1	1	1	1	1	1
26501029	PAD,VALVE	3	3	3	3	3	3	3
29203003	PIN,BLADE SPRING,S/S			3	2	3	3	2
29203002	PIN,SPRING			2		2	2	
25908119	PLUG,OIL DRAIN,RV PUMPS			1		1	1	
00714012	PLUG,OIL DRAIN,STEEL			2		2	2	
A20404011	ROLLER BEARING EM40							2
02104001	SEAL,DOWTY	2		2		2	2	
02104012	SEAL,DOWTY		2	2	2	2	2	2
02104030	SEAL,DOWTY		1		1			1
02109064	SEAL,SHAFT,VITON	1	1	1	1	1	1	1
02109067	SEAL,SHAFT,VITON	2		2		2	2	
02109094	SEAL,SHAFT,VITON		2		2			2
00307046	SPRING			2		2	2	
27102041	SPRING				1			1
27102032	SPRING,DISTRIBUTOR			1	1	1	1	1
27102030	SPRING,EXHAUST VALVE			2	1	2	2	1
00906077	SPRING,MW			3	2	3	3	2
27102033	SPRING,VALVE			2	2	2	2	2
20402123FR	VANE,GX,1ST STAGE					2	2	
20402153FR	VANE,GX,1ST STAGE							2
20402121FR	VANE,GX,2ND STAGE						2	
20402155FR	VANE,GX,2ND STAGE							2
20402120FR	VANE,GX,OIL PUMP					1	1	
20402157FR	VANE,GX,OIL PUMP							1
218990201	WASHER,WAVED			1	1	1	1	1

KITS

KIT BILL OF MATERIALS CAN BE FOUND LISTED ON THE 'KIT COMPONENTS' PAGES IMMEDIATELY FOLLOWING CORRESPONDING PUMP PAGES.

BLADE KITS

BLADE KITS INCLUDE VANES & SPRINGS (AS REQUIRED).

MODEL(S)	PART #	PRICE
E1M 40	34401050ED	\$224.00
E2M 40	36401050ED	\$240.00
E1M 80	36501050ED	\$268.00
E2M 80	36501050ED	\$189.00

CLEAN OVERHAUL KITS

CLEAN OVERHAUL KITS INCLUDE SEALS, COUPLING ELEMENT, O-RINGS, GASKETS & OTHER COMPONENTS FOR MINOR OVERHAUL.

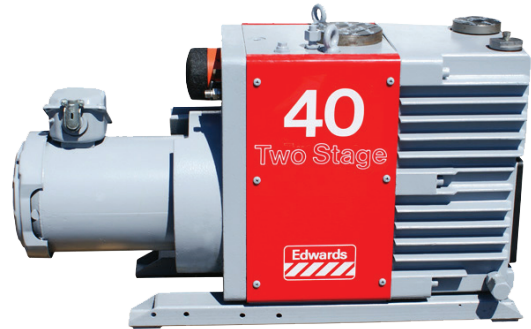
MODEL(S)	PART #	PRICE
E1M 40, E2M 40	34401131	\$128.00
E1M 80, E2M 80	34501131	\$168.00



MAJOR SERVICE KITS

MAJOR SERVICE KITS INCLUDE ALL COMPONENTS OF CLEAN OVERHAUL KITS & BLADE KITS, PLUS BEARINGS MAJOR OVERHAUL.

MODEL(S)	PART #	PRICE
E1M 40	34401814ED	\$309.00
E2M 40	36401814ED	\$419.00
E1M 80	34501814ED	\$402.00
E2M 80	36501814ED	\$515.00



FEATURED SPARES

ALL AVAILABLE SPARES FOR THIS SERIES CAN BE FOUND LISTED ON THE 'INDIVIDUAL SPARES' PAGES AT THE END OF THIS SECTION.

ROTORS

MODEL(S)	PART #	PRICE
E1M/E2M 40 (1ST-HV STAGE)	26401770	\$901.00
E2M 40 (2ND-LV STAGE)	26401740	\$403.00
E1M/E2M 80 (1ST-HV STAGE)	26401781	\$1082.00
E2M 80 (2ND-LV STAGE)	26401742	\$514.00



STATORS

MODEL(S)	PART #	PRICE
2M 40 (1ST-HV STAGE)	36401702	\$537.00
E2M 40 (2ND-LV STAGE)	36401712	\$488.00
E2M 80 (1ST-HV STAGE)	36501772	\$897.00
E2M 80 (2ND-LV STAGE)	36501744	\$469.00



MIST FILTERS & REPLACEMENT ITEMS

MODEL(S)	PART #	PRICE
MF100 (MIST FILTER)	A46203000	\$1592.00
MF100 (FILTER ELEMENT)	A22304020	\$238.00
MF100 (SPARES KIT)	A46203800	\$424.00
MF100A (MIST FILTER) CORROSIVE	A46211000	\$2000.00
MF100AE (FILTER ELEMENT) CORROSIVE	A22304052	\$325.00



RECOMMENDED OILS

TYPE	PART #	PRICE
ULTRAGRADE 19 (1L/1.06QT)	PPUG19001	\$16.00
PLUS FF (1L/1.06QT) FLUSHING FLUID	PPFF001	\$9.75



KIT COMPONENTS

PART NUMBER	ITEM DESCRIPTION	E1M40,E2M40	E1M80,E2M80	E1M40	E2M40	E1M80	E2M80
		CLEAN&O/H 34401131	CLEAN&O/H 34501131	MAJOR 34401814ED	MAJOR 36401814ED	MAJOR 34501814ED	MAJOR 36501814ED
22305035	ASSY,FILTER,INLET			1	1	1	1
22305050	ASSY,OIL FILTER			1	1	1	1
19201007	ASSY,PISTON,BALLAST	1	1				
A25904601	BALLAST VALVE E1M80			1	1	1	1
20404012	BEARING					2	2
820048	BOX,WHITE,14.5 X 10.5 X 2.5"	1	1		1		1
22426004	C-CLIP			1	1	1	1
21071033	ELEMENT,COUPLING,E2M40,E2M80			1	1	1	1
22305041	FILTER,FELT BALLAST	2	2	2	2	2	2
22304041	FILTER,OIL,NONAZIDE,E1/2M40/80			1	1	1	1
27159629	GASKET,OIL BOX,E1/E2M40	1		1	1		
27159618	GASKET,OIL BOX,E1/E2M80HFS		1			1	1
27159428	GASKET,VITON	1		1	1	1	1
36501024	MEMBER,DRIVE						2
02120097	O'RING,BUNA,139.5 X 3 MM	1		1	1		
02120101	O'RING,BUNA,157 X 3 MM		1			1	1
02125115	O'RING,BUNA,4.42 X 2.62 MM	2	2	2	2	2	2
02125044	O'RING,BUNA,46.99 X 5.33 MM	2	2	2	2	2	2
02120027	O'RING,BUNA,5.23 X 2.62 MM	1	1	1	1	1	1
02120057	O'RING,BUNA,61.6 X 2.4 MM	1	1	1	1	1	1
02120082	O'RING,BUNA,64.5 X 3 MM	1	1	1	1	1	1
02125116	O'RING,BUNA,7.92 X 2.6 MM	5	5	5	5	5	5
02120031	O'RING,BUNA,9.6 X 2.4 MM	1	1	1	1	1	1
02126011	O'RING,VITON,10.77 X 2.62 MM	1	1	1	1	1	1
02124119	O'RING,VITON,12.42 X 1.78 MM	1	1	1	1	1	1
02125020	O'RING,VITON,18.64 X 3.53 MM	1	1	1	1	1	1
A01403030	OIL FILTER SEAL			1	1	1	1
A20404011	ROLLER BEARING EM40			2	2		
02104001	SEAL,DOWTY	2	2	2	2	2	2
02104002	SEAL,DOWTY	1	1	1	1	1	1
02104014	SEAL,DOWTY	1	1	1	1	1	1
02104008	SEAL,DOWTY,BUNA,1 BSP	1	1	1	1	1	1
01403030	SEAL,FILTER,BUNA	1	1				
27159415	SEAL,RUBBER,VITON	1	1	1	1	1	1
02109064	SEAL,SHAFT,VITON	1	1	1	1	1	1
02109094	SEAL,SHAFT,VITON	2	2	2	2	2	2
26501012	SEAL,SIGHT GLASS	1	1	1	1	1	1
A29201006	SIGHT GLASS E1M80			1	1	1	1
27804004	SPACER,VALVE	4	6	4	4	6	6
27102024	SPRING,MW			1	1	1	1
27102013	SPRING,SS			1	1	1	1
A19201007	VALVE PISTON			1	1	1	1
25904601	VALVE,BALLAST	1	1				
27159509	VALVE,EXHAUST,VITON		1			1	1
27159514	VALVE,EXHAUST,VITON	1		1	1		
27159504	VALVE,LV EXHAUST,VITON		1			1	1
27159515	VALVE,LV EXHAUST,VITON	1		1	1		
27159541	VALVE,LV EXHAUST,VITON		1			1	1
20402089FR	VANE,GX,1ST STAGE					2	2
20402099FR	VANE,GX,1ST STAGE			2	2		
20402087FR	VANE,GX,2ND STAGE						2
20402101FR	VANE,GX,2ND STAGE				2		
20402418FR	VANE,GX,OIL PUMP			2	2	2	2
218990201	WASHER,WAVED	1	1	1	1	1	1

KITS

KIT BILL OF MATERIALS CAN BE FOUND LISTED ON THE 'KIT COMPONENTS' PAGES IMMEDIATELY FOLLOWING CORRESPONDING PUMP PAGES.

BLADE KITS

BLADE KITS INCLUDE VANES & SPRINGS (AS REQUIRED).

MODEL(S)	PART #	PRICE
E1M 175	34601134ED	\$260.00
E1M 275	34701134ED	\$383.00
E2M 175	36601134ED	\$357.00
E2M 275	36701134ED	\$510.00



CLEAN OVERHAUL KITS

CLEAN OVERHAUL KITS INCLUDE SEALS, COUPLING ELEMENT, O-RINGS, GASKETS & OTHER COMPONENTS FOR MINOR OVERHAUL.

MODEL(S)	PART #	PRICE
E1M 175/275	34601131	\$464.00
E2M 175/275	36601131	\$583.00



MAJOR SERVICE KITS

MAJOR SERVICE KITS INCLUDE ALL COMPONENTS OF CLEAN OVERHAUL KITS & BLADE KITS, PLUS BEARINGS & OTHER COMPONENTS FOR MAJOR OVERHAUL.

MODEL(S)	PART #	PRICE
E1M 175	34601831ED	\$691.00
E1M 275	34701831ED	\$826.00
E2M 175	36601831ED	\$839.00
E2M 275	36701831ED	\$1020.00



FEATURED SPARES

ALL AVAILABLE SPARES FOR THIS SERIES CAN BE FOUND LISTED ON THE 'INDIVIDUAL SPARES' PAGES AT THE END OF THIS SECTION.

ROTORS

MODEL(S)	PART #	PRICE
E1/2M 175 (1ST-HV STAGE)	26401057	\$1839.00
E1/2M 275 (1ST-HV STAGE)	26401058	\$1368.00
E2M 175/275 (2ND-LV STAGE)	26401777	\$847.00



STATORS

MODEL(S)	PART #	PRICE
E1M 175 (1ST-HV STAGE)	A34601779	\$782.00
E2M 175 (1ST-HV STAGE)	A36601026	\$1097.00
E1M 275 (1ST-HV STAGE)	A34701026	\$1101.00
E2M 275 (1ST-HV STAGE)	A36701776	\$1699.00
E2M 175/275 (2ND-LV STAGE)	A36601778	\$1301.00



MIST FILTERS & REPLACEMENT ITEMS

MODEL(S)	PART #	PRICE
MF 300 (MIST FILTER)	A46204000	\$3387.00
MF 300 (FILTER ELEMENT)	A22304021	\$254.00
MF 300 (SPARES KIT)	A46204800	\$952.00



EXHAUST VALVE UPGRADE KITS

MODEL(S)	PART #	PRICE
E1/2M 175	A27804004	\$6.73
E1/2M 275	A36701825	\$240.00



RECOMMENDED OILS

TYPE	PART #	PRICE
ULTRAGRADE 19 (20L/5.28GAL)	PPUG19004	\$51.00
PLUS FF (20L/5.28GAL) FLUSHING FLUID	PPFF004	\$23.78



KIT COMPONENTS

PART NUMBER	ITEM DESCRIPTION	E1M175	E2M275	E1M175	E1M275	E2M175	E2M275
		CLEAN&O/H 34601131	CLEAN&O/H 36601131	MAJOR 34601831ED	MAJOR 34701831ED	MAJOR 36601831ED	MAJOR 36701831ED
H02109076	B1 DIRECT VIT 30427		1			1	1
A34601067	BACK UP WASHER			2	2	2	2
A22305040	BALLAST FILTER E1M175	5		5	5		
A22305041	BALLAST FILTER FELT		2			2	2
A27159633	BALLAST GASKET	1		1	1		
A27159614	BALLAST GASKET DC501.5MM		1			1	1
A27159615	BALLAST GASKET DC501.5MM THICK		1			1	1
A25904601	BALLAST VALVE E1M80		1			1	1
A27159628	BOX GASKET	1	1	1	1	1	1
A27159416	DIAPHRAGM EDM15		1			1	1
A27159413	DISTRIBUTOR RUBBER 1	1	1	1	1	1	1
A27159619	DISTRIBUTOR VALVE BODY GASKET	1	1	1	1	1	1
H02104008	DOWTY SEAL 1" BSP MKH	1	1	1	1	1	1
H02104004	DOWTY SEAL 1/2" BSP MKD	1	1	1	1	1	2
H02104002	DOWTY SEAL 1/4" BSP MKB	6	6	6	6	6	6
H02104001	DOWTY SEAL 1/8" BSP MKA	1	1	1	1	1	1
A25972004	DRIVE PLATE FOR E2M175/275					1	1
21071030	ELEMENT,FLEXIBLE COUPLING			1	1	1	1
A27159621	END PLATE GASKET EM175/275	1	1	1	1	1	1
A27159620	EXHAUST VALVE GASKET 1.5MM THICK	1	1	1	1	1	1
A27159516	EXHAUST VALVE RUBBER	1		1	1		
A27159517	EXHAUST VALVE RUBBER	1		1	1		
A22304032	FILTER ELEMENT EM175/275			1	1	1	1
A27159526	FILTER GASKET EM175/275	1	1	1	1	1	1
22305011	FILTER,INLET			1	1	1	1
A34601070	GAS BALLAST JET EM175/275			1	1		
A27159428	GASKET		1			1	1
A27159429	GASKET G/B ASSY E1M175/275	1		1	1		
A20405021	HARDENED SLEEVE E1/2M1/275	1	1	1	1	1	1
A27159506	HV EXHAUST RUBBER ED		1			1	1
A27159505	HV EXHAUST VALVE RUB		1			1	1
A20405007	INNER RING TYPE IR35	1	1	1	1	1	1
B27158170	ISO63 TRAPPED O RING SEAL VITON®			1	1	1	1
22305014	KNITMESH			1		1	
22305015	KNITMESH				1		1
A27159624	LID GASKET EM175	1	1	1	1	1	1
A27159625	LID GASKET EM275	1	1	1	1	1	1
A27159504	LV EXHAUST RUBBER ED		1			1	1
218963109	M6 ODDIE NUT	1	1	1	1	1	1
H02126047	O RING	1	1	1	1	1	1
H02126050	O RING 2 3/41DX3/16	2	2	2	2	2	2
H02120027	O RING BS 4518 0056-	3	3	3	3	3	3
H02125026	O RING INLET FILTER	2	2	2	2	2	2
H02126117	O RING SEAL E1M175	1		1	1		
H02126015	O RING VIT 0115	3		3	3		
H02126020	O RING VIT 0210	2	2	2	2	2	2
H02126030	O RING VIT 0220	1		1	1		
H02125039	O RING VOR	1	1	1	1	1	1
H02125011	O RING VOR 0111		1			1	1
H02125091	O RING VOR 0448	1	1	1	1	1	1
H02125116	O RING VOR 4A	1	1	1	1	1	1
H02122036	O'RING VIT 14.6ID X	1	1	1	1	1	1
02122036	O'RING,BUNA,14.3 X 2.4 MM						1
02125171	O'RING,BUNA,66.27 X 3.53 MM						1
02125181	O'RING,BUNA,78.74 X 5.33 MM						1
02126047	O'RING,VITON,56.52 X 5.33 MM						1
A27159627	OIL BOX GASKET	1	1	1	1	1	1
A01601089	OIL SIGHT GLASS			1	1	1	1
A00906058	OIL SIGHT GLASS CAP			2	2	2	2
P211284039	PIN,COTTER						1
A02800016	PISTON FACE		1			1	1
A26501020	PISTON RING EM175/275	1	1	1	1	1	1
26501020	RING,PISTON						1

KIT COMPONENTS (CONT.)

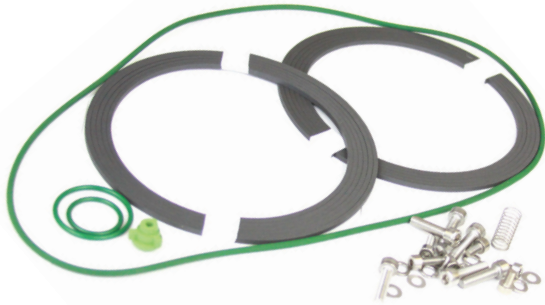
PART NUMBER	ITEM DESCRIPTION	E1M175	E2M275	E1M175	E1M275	E2M175	E2M275
		CLEAN&O/H 34601131	CLEAN&O/H 36601131	MAJOR 34601831ED	MAJOR 34701831ED	MAJOR 36601831ED	MAJOR 36701831ED
A20404013	ROLLER BEARING NU208			2	2	2	2
211284039	S/S SPLIT PIN 1/16X	1	1	1	1	1	1
02109076	SEAL,SHAFT,VITON						1
H02109077	SIMBRIT SEAL 40-52-7 VITON«	3	3	3	3	3	3
27102019	SPRING			1	1	1	1
27102023	SPRING			1	1	2	2
A27102022	SPRING E1M275			1	1	1	1
A25904603	VALVE E1M175	1		1	1		
A34601042	VALVE PAD E1M175	1	1	1	1	1	1
A19201007	VALVE PISTON					1	1
20402127FR	VANE,GX,1ST STAGE			2		2	
20402129FR	VANE,GX,1ST STAGE				2		2
20402087FR	VANE,GX,2ND STAGE					2	2
20402098FR	VANE,GX,OIL PUMP			1	1	1	1
A21001117	VOID FILL FITTING SP	1		1	1		
H02125023	VOR 0213 EDM15	1	1	1	1	1	1
H02125055	VOR 0340 EDM15	1	1	1	1	1	1
H02125171	VOR 1171 O RING	1	1	1	1	1	1
H02125181	VOR 1181 O RING	1	1	1	1	1	1

KITS

KIT BILL OF MATERIALS CAN BE FOUND LISTED ON THE 'KIT COMPONENTS' PAGES IMMEDIATELY FOLLOWING CORRESPONDING PUMP PAGES.

TIP SEAL KITS

MODEL(S)	PART #	PRICE
XDS 5/5C, XDS 10/10C	72601805	\$261.00
XDS 35I	73001801	\$434.00



ROUTINE SERVICE KITS

ROUTINE SERVICE KITS INCLUDE ANGULAR CONTACT BEARINGS, SHAFT END CAP, WASHERS, SCREWS, PLUGS & O-RINGS FOR MAJOR OVERHAULS. (NOTE: TIP SEAL KIT IS NOT INCLUDED AND MUST BE PURCHASED SEPARATELY)

MODEL(S)	PART #	PRICE
XDS 5/5C, XDS 10/10C	72601823	\$320.00
XDS 35I	73001802	\$748.00



FEATURED SPARES

ALL AVAILABLE SPARES FOR THIS SERIES CAN BE FOUND LISTED ON THE 'INDIVIDUAL SPARES' PAGES AT THE END OF THIS SECTION.

MOTOR BEARINGS

MODEL(S)	PART #	PRICE
XDS 5/5C, XDS 10/10C	20408012	\$72.10



EXHAUST SILENCER SPARES KITS

INCLUDES ELEMENT, FOAM BLOCK & INSTALLATION MANUAL.

MODEL(S)	PART #	PRICE
XDS 5/5C, XDS 10/10C	A50597800	\$140.00
XDS 35I	A50597801	\$317.00



EXHAUST SILENCERS

MODEL(S)	PART #	PRICE
XDS 5/5C, XDS 10/10C	A50597000	\$316.00
XDS 35I	A50597001	\$400.00



BALLAST KITS

MODEL(S)	PART #	PRICE
XDS 5	A72501802	\$192.00
XDS 10	A72601802	\$190.00
XDS 35I	A73001803	\$184.00



KIT COMPONENTS

PART NUMBER	ITEM DESCRIPTION	XDS 5/5C, 10/10C	XDS 35i
		SEAL 72601805	SEAL 73001801
A72601073	TIP SEAL XDS5/10	2	
23714-034	O RING VITON®	1	
A73001032	TIP SEAL XDS30		2
218231287	M4 X8 SOC CAP SCREW ST STL		3
218231289	SCREW CAP STAINLESS STEELT. M4 X 12		3
218315041	SCREW M5 X20 SKT CAPHD S/S		6
218981307	WSHR NORMAL SS M4		3
A26501066	EXHAUST VALVE PAD	1	1
A27102057	SPRING 9.27 O/D X 19.5LG !C!	1	1
A55665136	WASHER,M5,S/COIL,RECT.		6
A72601840	SUP INST, XDS REPLACEMENT SEAL KIT, EN	1	
A73001840	XDS35i TIP SEAL AND EXHAUST KIT MANUAL		1
H02122041	O'RING VIT 19.6ID X 2.4SEC!P!		1
H02122045	O RING 29.6 OD VIT	1	1
H02122113	O RING 239.5 X 3 VITON		1
H02122045	O RING 29.6 OD VIT	1	
H02122109	O RING 199.5 X 3	1	
H02126012	O RING	1	

KIT COMPONENTS

PART NUMBER	ITEM DESCRIPTION	XDS 5/5C, 10/10C	XDS 35i
		SERVICE 72601823	SERVICE 73001802
A20408021	A-C BRG, 7007BEG 2RS-L260		2
A20408004	ANGULAR CONTACT BRG F-236611.2		1
A20408001	ANGULAR CONTACT BRG LD17/402RS	1	
A72601025	BEARING RETAINING PLATE.	1	
A25908257	BLANKING PLUG 19MM		1
A22426004	CIRCLIP EM5-80		1
A25908150	FLANGE RING COVER		1
A24301062	KEY 4X4X12LG FORM A-BS4235 PT1		1
218986607	M4 SHAKEPROOF SS WASHER	7	6
218091295	M4 X 40LONG SOCKET HD SCREW		4
218435286	M4 X 8 SOC HD BLK BUTTON SCREW	3	
218231287	M4 X8 SOC CAP SCREW ST STL	7	
218961000	NUT THIN MS M30X2.0 TO BS3692		1
H02122009	O RING	1	1
22185-033	O RING (G105) HAADFG105	2	
H02122101	O RING 159.5 X 3		1
H02122079	O RING 49.5 ID X 3		1
23714-038	ORING VIT 174.5ID X 3.0SEC		1
H02122041	O'RING VIT 19.6ID X 2.4SEC	1	
A72601026	PLUG, ORBITING SCROLL.	1	1
218092502	SCR CAP HT NI M6X.65 LONG		3
218231335	SCR CAP M5X40 SS		6
218430215	SCR M6X20 CSK SKT HD GRD10.9HT	1	
218430222	SCR M8X25 CSK SKT HD GRD12.9HT		1
218430224	SCR M8X35 CSK SKT HD GRD12.9HT		1
218231289	SCREW CAP STAINLESS STEELT. M4 X 12		18
A73001025	SHAFT END CAP		1
A72601027	SHAFT END CAP, SCROLL PUMP.	1	
H03517004	TAPER PLUG 1/8" BSP	3	
218430111	TRAPPED WASHER SCREW M4X12	8	
H02126026	VIT 0216 O RING	1	
218981307	WSHR NORMAL SS M4	3	
218982807	WSHR S.COIL M4		6

KITS

KIT BILL OF MATERIALS CAN BE FOUND LISTED ON THE 'KIT COMPONENTS' PAGES IMMEDIATELY FOLLOWING CORRESPONDING PUMP PAGES.

TIP SEAL KITS

MODEL(S)	PART #	PRICE
ESDP 12	P71002026	\$375.00
ESDP 30/30A, GVSP 30	P71004026	\$390.00



MAJOR SERVICE KITS

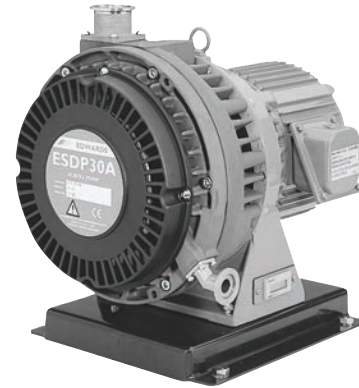
MAJOR SERVICE KITS INCLUDE BEARINGS, TIP SEAL KIT, SHAFT SEALS, CRANK PINS, O-RINGS, VALVES & OTHER COMPONENTS FOR MAJOR OVERHAUL.

MODEL(S)	PART #	PRICE
ESDP 12	P71005800	\$1340.00
ESDP 30/30A, GVSP 30	P71004800	\$1494.00



CRANK PIN KITS

MODEL(S)	PART #	PRICE
ESDP 12	71002006	\$216.00
ESDP 30/30A, GVSP 30	71004006	\$303.00



FEATURED SPARES

ALL AVAILABLE SPARES FOR THIS SERIES CAN BE FOUND LISTED ON THE 'INDIVIDUAL SPARES' PAGES AT THE END OF THIS SECTION.

CRANK SHAFTS

MODEL(S)	PART #	PRICE
ESDP 12	71002012	\$372.00
ESDP 30/30A, GVSP 30	71003012	\$469.00



KIT COMPONENTS

PART NUMBER	ITEM DESCRIPTION	ESDP12	ESDP,GVSP30/30A
		MAJOR SERVICE P71005800	MAJOR SERVICE P71004800
870014	19.GREASE,TEC,.5 OZ TUBE	1	1
A98881230	AIR FLUSH ASSEMBLY, SCROLL PUMP		1
330008	BEARING,2 METAL SHIELDS		1
330007	BEARING,6302ZZ	1	
08884010	BEARING,NEEDLE,20X28X13,PFPE		1
08880020	BEARING,NEEDLE,30X40X20,PFPE		2
08884001	BEARING,NEEDLE,CRANK PIN,PFPE		3
08880021	BEARING,NEEDLE,SCROLL,PFPE	2	
08884002	BEARING,NEEDLE,SCROLL,PFPE	2	
08884011	BEARING,NEEDLE,SCROLL,PFPE	1	
085039449	COUPLING,SPIDER,L-075	1	
71002006S	CRANKPIN,SINGLE	2	
71004006S	CRANKPIN,SINGLE		3
08881000	ELEMENT,COUPLING,BLACK		1
08883002	G-SEAL,FS-1,SCROLL PUMP	1	
08883005	G-SEAL,FS-2,SCROLL PUMP	1	
08883001	G-SEAL,OS,SCROLL PUMP	2	
07193002	GREASE SEAL, 20X28X4, GVSP30		1
08805041	GUIDE,OUTLET VALVE		1
08805042	GUIDE,OUTLET VALVE	1	
P71002026	KIT,TIP SEAL, GVSP12,ISP250	1	
P71004026	KIT, TIP SEAL, GVSP30,ISP500		1
20019794	O'RING, VITON, 17X1.5		1
320121	O'RING, VITON, 36X1.5		1
02122009V	O'RING,VITON,11 X 1.5 MM	4	
53598504	O'RING,VITON,12X2.31MM	1	
320087	O'RING,VITON,13.5 X 1.5 MM		1
320086	O'RING,VITON,14.5 X 1.5 MM		6
79506	O'RING,VITON,212 X 3 MM	1	
320189	O'RING,VITON,250 X 3 MM		1
23970304	O'RING,VITON,45 X 3 MM	1	1
470014	RING,RETAINING,M16,472,S/S	1	
400033	SCREW,PHILLIPS,"TRUSS HEAD"	4	6
400068	SCREW,WASHER HEAD,M3X4MM,STEEL	4	6
08882150	SEAL,GREASE,W/GARTER SPRING		2
08804072	SEAL,SHAFT,26X37X6,GVSP30		1
08883004	SEAL,SHAFT,FS-1,SCROLL PUMP	1	
08883003	SEAL,SHAFT,FS-2,SCROLL PUMP	1	
08882100	SEAL,SHAFT,VITON,25X37X4.25MM		1
08885012	SHAFT SEAL, 20X32X8, GVSP30		1
08801050	SPRING	1	1
08804390	SPRING,EXHAUST VALVE,ESDP30A		1
490055	SPRING,SS	1	
08805381	VALVE,EXHAUST STEM	1	
08802390	VALVE,EXHAUST,SDP-30A		1
08805380	VALVE,EXHAUST,STEM,ESDP30		1
420039	WASHER,SEAL,SCROLL,CLEAR, MYLAR		4
420038	WASHER,THRUST,1.09 X .6 X .04	1	

KITS

KIT BILL OF MATERIALS CAN BE FOUND LISTED ON THE 'KIT COMPONENTS' PAGES IMMEDIATELY FOLLOWING CORRESPONDING PUMP PAGES.

BOOSTER REPAIR KITS

BOOSTER REPAIR KITS INCLUDE SHAFT SEALS, GASKETS, SLEEVES, SHIMS, FILTERS & BEARINGS (AS REQUIRED) FOR COMPLETE OVERHAULS OF BOTH THE DRIVE SECTION & PUMPING MECHANISM OF BOOSTER PUMPS. BOOSTER KITS ARE DESIGNED FOR USE IN EITHER CONICAL OR PRE-CONICAL VERSION OF PUMP.

MODEL(S)	PART #	PRICE
EH/QMB 250/500	30151800	\$407.00
EH/QMB 1200	30551800	\$689.00
EH 2600/4200	30751800	\$1051.00



SHIM KITS

SHIM KITS INCLUDE A COMPLETE SET OF SHIMS REQUIRED TO SET THE GEAR TIMING OF BOOSTERS.

MODEL(S)	PART #	PRICE
EH/QMB 250/500	30151825	\$47.74
EH/QMB 1200, EH 2600/4200	30751825	\$42.85



KIT COMPONENTS

PART NUMBER	ITEM DESCRIPTION	EH/QMB250-500	EH/QMB1200	EH2600,EH4200
		BOOSTER 30151800	BOOSTER 30551800	BOOSTER 30751800
A20403008	BALL BEARING TYPE			12
20403025	BEARING,BALL,S-ROW,52X20X15	2		
20403010K	BEARING,W/KRYTOX GREASE & PTF	2		
H02104008	DOWTY SEAL 1" BSP MKH		1	1
A22302009	DUST SEAL EH2600			12
A22302008	DUST SEAL FELT42MM X 30.5MM X 6MM		4	
A22302015	FILTER DISC		5	18
A22302016	FILTER DISC	2		
22302015	FILTER,FELT	11		
A27159548	GASKET EH1200 VITON		1	
27159438	GASKET,EH250/500	1		
27159547	GASKET,VITON	1		
A20405050	INNER RING FOR EH1200 EDD1200		4	
A20405051	INNER RING FOR EH2600 EH4200			12
A20403031	MAIN BEARING EH/QMB1200		4	
A30751034	MOTOR SHAFT SLEEVE CONICAL 2600			1
H02122033	O RING		1	
H02125260	O RING 022 VOR		4	
H02122113	O RING 239.5 X 3 VITON			1
H02126165	O RING 61 X 9 ID 3.53 VIT		2	
H02122031	O RING VIT 0096-24		2	
H02126028	O RING VIT 0218		6	6
H02122091	O RING VIT 109-5 3-0			1
H02122159	O RING VIT 299.3ID X 5.7 SEC PK1		2	
A27159549	O RING VITON« GASKET EH260-4200			1
23714-034	O RING VITON®		8	7
23716-042	O RING VITON® SEALING RING			2
02122009	O'RING,BUNA,11.1 X 1.6 MM	4		
02120023	O'RING,BUNA,35.1 X 1.6 MM	4		6
02120077	O'RING,BUNA,42.5 X 3 MM	1		
02122091	O'RING,VITON,109.5 X 3 MM	1		
02126121	O'RING,VITON,15.54 X 2.62 MM	2		5
23714036	O'RING,VITON,150 X 3 MM	1		
23714034	O'RING,VITON,19 X 3 MM	6		
23714037	O'RING,VITON,233 X 3 MM	1		
02125260	O'RING,VITON,25.12 X 1.78 MM			6
02126025	O'RING,VITON,26.57 X 3.53 MM			6
02126028	O'RING,VITON,31.34 X 3.53 MM	4		
23712-041	ORING VIT 44.6ID X 2.4SEC		4	
23714-039	ORING VIT 0.500ID X.103SEC!N!		1	
H02126121	ORING VIT 0.625ID X.103SEC!N!		5	
23714-038	ORING VIT 174.5ID X 3.0SEC!N!		1	
A27160004	PRINTED GASKET QMB1200		1	
H02109053	PTFE LIP SEAL - DRY PUMPS		4	
A20405049	RING,INNER,EH250/500	4		
23754-016	RUBBER BONDED SEAL		5	
A27159439	RUBBER SEAL RING EH1200		1	
2104008	SEAL,DOWTY,BUNA,1 BSP	1		
23754016	SEAL,DOWTY,BUNA,1/2 BSP	2		
22302005	SEAL,DUST	4		
02109120	SEAL,SHAFT,CCW(CONICAL MODELS)	1		
02109052	SEAL,SHAFT,TEFLON,RED CASE	4		
02109075	SEAL,SHAFT,VITON	4		
02109077	SEAL,SHAFT,VITON			2
A30751825	SHIM SPARE SET EH/QMB12/26/4200		1	1
27165032	SHIM,.125MM,EH250/ EH500	3		
27165008	SHIM,0.20MM EH250	3		
27165009	SHIM,0.25MM,EH250/ EH500	3		
27165018	SHIM,0.30MM EH250	3		
27165010	SHIM,0.35MM EH250	3		
27165011	SHIM,0.40MM EH250	3		
A29201004	SIGHTGLASS	2	3	3
H02109077	SIMBRIT SEAL 40-52-7 VITON			2

KIT COMPONENTS (CONT.)

PART NUMBER	ITEM DESCRIPTION	EH/QMB250-500	EH/QMB1200	EH2600,EH4200
		BOOSTER 30151800	BOOSTER 30551800	BOOSTER 30751800
A27802036	SLEEVE HARD EH1200		1	
A27802035	SLEEVE,HARDENED,CONICAL	1		
A27801025	SLEEVE,SHAFT,HARD,EH250/500	2		
A27802032	SOFT SLEEVE EH1200/EH2600			2
A27802031	SOFT SLEEVE FOR EH1200 EDD1200		2	
A30551815	SPARES KIT CON C&O EH/QMB1200		1	
A30551820	SPARES KIT MODULE EH/QMB1200		1	
23741-069	SPECIAL LIP SEAL EH2600-4200			1
H02126025	VIT 0215 O RING		4	6
A20404020	VITON SHIELD BALL BEARING		4	
A27159441	VITON O RING EH/EDD2600/4200			1
H02109143	VITON SHAFT SEAL 30X42X7 QTY 1		4	
H02109144	VITON SHAFT SEAL 35X47X7 QTY 1		1	
23714-040	VITON O RING EH2600/EH4200			1

INDIVIDUAL SPARES

BEARINGS

08880020	BEARING, NEEDLE, 30X40X20, PFP	GVSP30, ESPD30
08880021	BEARING, NEEDLE, SCROLL, PFPE	ESDP-12, ISP-250B
08880110	BEARING, BALL, W/SNAPRING, ESPD30	ESDP30
08882000	BEARING, BALL, FLANGE, ESPD30	ESDP30
08884001	BEARING, NEEDLE, CRANK PIN, PFPE	GSVP30, ISP500B
08884002	BEARING, NEEDLE, SCROLL, PFPE	ESDP-12, ISP-250B
08884010	BEARING, NEEDLE, 20X28X13, PFP	ESDP30, GVSP30
08884011	BEARING, NEEDLE, SCROLL, PFPE	ESDP-12, ISP-250B
08885100	BEARING, W/SNAP RING, ESPD30	ESDP30
20403006	BEARING	EH500
20403009K	BEARING, KRYTOX OIL, PREP & 1 R	EH250
20403010	BEARING, METAL SHIELD, 1 SIDE	EH250, EH500
20403010K	BEARING, W/KRYTOX GREASE & PTF	EH250, EH500
20403025	BEARING, BALL, S-ROW, 52X20X15	EH250, EH500
20403027	BEARING, BALL, D-ROW, 62X25X25, PACK OF 2	DP40, QDP40, IQDP40
20404011	ROLLER BEARING EM40	E1M40, E2M28, E2M30, E2M40
20404012	BEARING	E1M80
20404023	BEARING, BALL, S-ROW, 62X25X17, PACK OF 2	DP40, QDP40, IQDP40
20408012	BEARING, BALL, D-ROW, SINGLE	
330007	BEARING, 6302ZZ	ESDP-12, ISP-250B
330008	BEARING, 2 METAL SHIELDS	ESDP30
330013	BEARING, BALL, 17X40X12, ESPD30	ESDP30
330014	BEARING, BALL, 25X52X15, ESPD30	ESDP30
6005ZPIN	BEARING, BALL, PINNED, KRYTOX	AA100WN
6006ZPIN	BEARING, BALL, PINNED, KRYTOX	AA100WN
A20404013	ROLLER BEARING NU208	E1M175, E1M175S
40801818	CAGED CERAMIC (2PACK)	iH160

BUSHINGS

20405021	SEAL, SHAFT, BUSHING	E2M275
----------	----------------------	--------

CAPS

26501006	SIGHT GLASS, CAP	EDM6, EDM12, EDM20
----------	------------------	--------------------

COUPLINGS

08881000	ELEMENT, COUPLING, BLACK	GVSP30, ESPD30A, ESPD30B
21071030	ELEMENT, FLEXIBLE COUPLING	E1M275
21071033	ELEMENT, COUPLING, E2M40, E2M80	E2M40, E2M80
26501032	COUPLING, ELEMENT, E1/E2M18/30	E1M18, E2M18, E2M28, E2M30
A21071077	COUPLING ELEMENT RV PUMP	RV3, RV5, RV8, RV12
A25908127	OLDHAM COUPLING RV3/5/8/12	RV12

ELEMENTS

22304057	FILTER ELEMENT MF30	MF30
22304077	ODOUR REMOVAL ELEMENT EMF20 PK5	EMF20
22304079	ODOUR REMOVAL ELEMENT EMF10 PK5	EMF10
22304081	ODOUR REMOVAL ELEMENT EMF3 PK5	EMF3, EMF5
22304090	FILTER, ELEMENT, EOF2500, 25C	EOF2500
22304197	FILTER OIL ELEMENT EMF3	EMF3
22304198	FILTER OIL ELEMENT EMF10	EMF10
22304199	FILTER OIL ELEMENT EMF20	EMF20
A22304020	FILTER ELEMENT MF100	MF100
A22304021	FILTER ELEMENT MF300 PK1	MF300
A22304032	FILTER ELEMENT EM175/275	E1M275, E2M175, E2M275
A22304052	FILTER ELEMENT MF100AE	MF100AE

FILTERS

01403026	FILTER, INLET	EDM6, EDM12, EDM20, ED75, ED100, ED150, ED200
02308043	FILTER, GAS BALLAST	E1M18, E2M18, E2M28, E2M30
22302015	FILTER, FELT	EH250, EH500, EH1200
22304041	FILTER, OIL, NONAZIDE, E1/2M40/80	E1M40
22305003	FILTER, OIL	E2M2, E2M5, E2M8, E1M5, E1M8, E2M12
22305011	FILTER, INLET	E2M275
22305035	ASSY, FILTER, INLET	E1M40, E1M80, E2M40, E2M80
22305036	FILTER	EDM6, EDM12, EDM20
22305037	ASSY, FILTER, INLET	E2M12, E2M18, E2M28, E2M30E1VERSION
22305041	FILTER, FELT BALLAST	E2M40, E2M80
22305047	FILTER, OIL	E2M0.7, E2M1, E2M1.5
22305050	ASSY, OIL FILTER	E1M40, E1M80, E2M40, E2M80
25907200	FILTER, BALLAST	E1M5, E1M8, E2M2, E2M5, E2M8, E2M12
25907202	FILTER, BALLAST	E2M0.7, E2M1, E2M1.5
46220000	FILTER MIST OUTLET	EMF3/OFM2 EMF3
46226000	FILTER OIL MIST OUTLET	EMF10 EMF10

INDIVIDUAL SPARES

FILTERS (CONT.)

46229000	EMF20 OIL MIST FILTER NW25	EMF20
46233000	EMF30 OUTLET MIST FILTER FITS	E2M28 EMF30
A22305008	OIL FILTER ASSY	E1M18,E2M18
A27159526	FILTER GASKET EM175/275	E1M175,E1M275
A46203000	EMF100 OUTLET MIST FILTER	EMF100
A46203800	SPARES KIT MF100	EMF100
A46204000	EMF300 OUTLET MIST FILTER	EMF300
A46204800	SPARES KIT MF300	EMF300
A46211000	EMF100AE FILTER CORROSION RESISTANT	EMF100AE
A46220000	EMF3 OIL MIST FILTER NW10	EMF3
A46226000	EMF10 OIL MIST FILTER NW25	EMF10
A46229000	EMF20 OIL MIST FILTER NW25	EMF20

GASKETS

11101014	GASKET,OIL BOX	EDM6,EDM12,EDM20
27159428	GASKET,VITON	E2M40,E2M80
27159500	GASKET,EH250,EH500	EH250,EH500
27159501	GASKET,VITON	EH1200
27159507	GASKET,FILTER	E1M275
27159526	GASKET,FILTER	E2M175,E2M275
27159530	GASKET,SIGHT GLASS	E2M18
27159532	GASKET,E2M28	E2M28
27159547	GASKET,VITON	EH250,EH500
27159614	GASKET,BALLAST	E2M275
27159615	GASKET,BALLAST	E2M275
27159616	GASKET,OIL BOX	E2M2,E2M5,E2M8,E2M12,E1M5,E1M8
27159618	GASKET,OIL BOX,E1/E2M80HFS	E2M80
27159619	GASKET,VALVE BODY	E1M275,E2M275
27159620	GASKET,EXHAUST	E1M275,E2M275
27159621	GASKET,END PLATE	E1M275,E2M275
27159624	GASKET,LID	E1M275,E2M275
27159625	GASKET,LID	E1M275,E2M275
27159627	GASKET,KNITMESH	E1M175,E2M175,E1M275,E2M275
27159628	GASKET,KNITMESH BOX	E1M275,E2M275
27159629	GASKET,OIL BOX,E1/E2M40	E2M40
27159633	GASKET,BALLAST,E1M275	E1M275
27159635	GASKET,OIL BOX	E2M18,E1M18,E2M28,E2M30
27159637	GASKET,OIL BOX	E2M1
27159638	GASKET,SIGHT GLASS	E2M18,E2M30
37125020	GASKET,SIGHT GLASS	E2M0.7,E2M1,E2M1.5
A27159428	GASKET E2M175	,E2M275
A27159606	GASKET SPEEDIVAC2	SPEEDIVAC
A27160004	PRINTED GASKET	QMB1200 EH1200,QMB1200
A27160005	OIL BOX PRINTED GASKET RV	RV3,RV5,RV8,RV12
A27160006	PRINTED GASKET CARTRIDGE RV	RV3,RV5,RV8,RV12
A27160007	TOP PLATE GASKET	RV3,RV5,RV8,RV12

HARDWARE

22426004	C-CLIP	E2M2,E2M5,E2M8,E2M12,E2M18,E2M30,E2M40,E2M80
22426005	C-CLIP	E2M2,E2M5,E2M8,E2M12
24301010	KEY, SHAFT	E2M5,E2M8
24301013	KEY,SHAFT,8X5X20MM	DP80,QDP80,IQDP80
24301016	KEY,SHAFT,8X7X30MM,DP40/80	DP40,QDP40,IQDP40
24301021	KEY,SHAFT,8X7X16MM	DP40,QDP40,IQDP40,DP80,QDP80,IQDP80
36413025	WASHER	E2M40,E2M80
400033	SCREW,PHILLIPS,"TRUSS HEAD"	ESDP30,ESDP30A,GVSP30
400068	SCREW,WASHER HEAD,M3X4MM,STEEL E	SDP30,EDSP30A,GVSP30,SC30D,ISP500B
420038	WASHER,THRUST,1.09 X .6 X .04	ESDP12
420039	WASHER,SEAL,SCROLL,CLEAR, MYLAR	GVSP-30,ISP-500B
P212081133	C-CLIP	E2M28,E2M30
218990201	WASHER,WAVED	E1M5,E1M8,E2M2,E2M5,E2M8

KITS

13401811ED	SPARES KIT SPEEDIVAC 2	SPEEDIVAC
30151800	KIT,BOOSTER,ALL SERIAL #S	EH250A,EH500A
30151825	KIT,SHIM,EH/QMB250/500	EH250,QMB250,EH500,QMB500
30551800	KIT,BOOSTER,ALL SERIAL NUMBERS,EH1200	EH1200,QMB1200
30751800	KIT,SPARES,BOOSTER	EH2600,EH4200
30751810	KIT,C&O,PRE-CON,EH2600/EH4200	EH2600,EH4200(PRE-CONICAL)
30751815	KIT,C&O,CONICAL,EH2600/EH4200	EH2600,EH4200 (CONICAL)
30751820	KIT,MODULE SERVICE,EH2600/4200	EH2600,EH4200
30751825	KIT,SHIM,EH1200/EH2600/EH4200	EH1200,QMB1200,EH2600,EH4200
34101131	KIT,CLEAN&OVER,E1M5/8,E2M2/5	E1M5,E1M8,E2M2,E2M5,E2M8
34101820	KIT,SEAL,E1/E2M5,E1/E2M8	E1M5,E1M8,E2M5,E2M8

INDIVIDUAL SPARES

KITS (CONT.)

40802800	PUMP KIT	iL70
30305800	BOOSTER KIT	HMB600/1000
40802890	PUMP & BOOSTER	iL600
40801800	PUMP KIT	iH80
40803890	PUMP&BOOSTER	iH1800/2400
40801890	PUMP&BOOSTER	iH600/1000
40803800	PUMP KIT	iH160
30318800	BOOSTER KIT	HMB1800/2400
34101820	KIT,SEAL,E1/E2M5,E1/E2M8	E1M5,E1M8,E2M5,E2M8
34301041ED	KIT,BLADE,ED,E1M18	E1M18
34301800ED	KIT,MAINT.,ED,E1M18	E1M18
34301820	KIT,SEAL,E1/E2M18	E1M18,E2M18
34401050ED	KIT,BLADE,ED,E1M40	E1M40
34401131	KIT,CLEAN&OVERHAUL,E1/2M40	E1M40,E2M40
34401814ED	KIT,MAJOR SERVICE,ED,E1M40	E1M40
34401820	KIT,SEAL,E1M40/80,E2M40/80	E1M40,E1M80,E2M40,E2M80
34501050ED	KIT,BLADE,ED,E1M80	E1M80
34501131	KIT,CLEAN&OVERHAUL,E1/2M80	E1M80,E2M80
34501814ED	KIT,MAJOR SERVICE,ED,E1M80	E1M80
34601131	KIT,CLEAN&OVERHAUL,E1M175/275	E1M175,E1M275
34601134ED	KIT,BLADE,ED,E1M175	E1M175
34601831ED	KIT,MAJOR SERVICE,ED,E1M175/S	E1M175,E1M175S
34601840	KIT,SEAL,E1M175/275	E1M175,E1M275
34701134ED	KIT,BLADE,ED,E1M275	E1M275
34701831ED	KIT,MAJOR SERVICE,ED,E1M275	E1M275,E1M275S
36001040	KIT,DISTRIBUTOR,E2M2/5/8/12	E2M2,E2M5,E2M8,E2M12
36001129ED	KIT,BLADE,ED,E2M2	E2M2
36001800ED	KIT,MAINT.,ED,E2M2	E2M2
36101129ED	KIT,BLADE,ED,E2M5	E2M5
36101800ED	KIT,MAINT.,ED,E2M5	E2M5
36201129ED	KIT,BLADE,ED,E2M8	E2M8
36201800ED	KIT,MAINT.,ED,E2M8	E2M8
36301020ED	KIT,BLADE,ED,E2M18	E2M18
36301131	KIT,CLEAN&OVERHAUL,E1M18/E2M18	E1M18,E2M18
36301800ED	KIT,MAINT.,ED,E2M18	E2M18
36401050ED	KIT,BLADE,ED,E2M40	E2M40
36401814ED	KIT,MAJOR SERVICE,ED,E2M40	E2M40
36413820	KIT,CLEAN&OVERHAUL,E2M40S	E2M40S (SU,(SUPR PMP)
36501050ED	KIT,BLADE,ED,E2M80	E2M80
36501814ED	KIT,MAJOR SERVICE,ED,E2M80	E2M80
36601131	KIT,CLEAN&OVERHAUL,E2M175/275	E2M175,E2M275
36601134ED	KIT,BLADE,ED,E2M175	E2M175
36601831ED	KIT,MAJOR SERVICE,ED,E2M175	E2M175
36601840	KIT,SEAL,E2M175/275	E2M175,E2M275
36701134ED	KIT,BLADE,ED,E2M275	E2M275
36701831ED	KIT,MAJOR SERVICE,ED,E2M275	E2M275,E2M275S
37001129ED	KIT,BLADE,ED,E2M12	E2M12
37001131	KIT,CLEAN&OVERHAUL,E2M12	E2M12
37001800ED	KIT,MAINT.,ED,E2M12	E2M12
37001820	KIT,SEAL,E2M12	E2M12
37101131	KIT,CLEAN&OVER,E2M0.7/1/1.5	E2M0.7,E2M1,E2M1.5
37101132ED	KIT,BLADE,ED,E2M0.7/1/1.5	E2M0.7,E2M1,E2M1.5
37101800ED	KIT,MAINT.,ED,E2M0.7/1/1.5	E2M0.7,E2M1,E2M1.5
37101820	KIT,SEAL,E2M0.7/1/1.5	E2M0.7,E2M1,E2M1.5
37301131	KIT,CLEAN&OVER,E2M28/E2M30	E2M28,E2M30
37301135ED	KIT,BLADE,ED,E2M28/30	E2M28,E2M30
37301800ED	KIT,MAINTENANCE,ED,E2M28/30	E2M28,E2M30
37301820	KIT,SEAL,E2M28/E2M30	E2M28,E2M30
65201032	CARTRIDGE KIT (RV3)	RV3
65201130	KIT,BLADE,ED,RVP 3	RV3
65201131RV12	KIT MAJOR SERVICE ED	RV12
65201131RV3	KIT MAJOR SERVICE ED	RV3
65201131RV5	KIT MAJOR SERVICE ED	RV5
65201131RV8	KIT MAJOR SERVICE ED	RV8
65201134	KIT,SHAFT SEAL,VITON,RV	RV3,RV5,RV8,RV12
65201136	KIT,SHAFT SLEEVE,RVP	RV3,RV5,RV8,RV12
65301032	CARTRIDGE KIT (RV5)	RV5
65301130	KIT,BLADE,ED,RVP 5	RV5
65401032	CARTRIDGE KIT (RV8)	RV8
65401130	KIT,BLADE,ED,RVP 8	RV8
65501032	CARTRIDGE KIT (RV12)	RV12
71002006	KIT,CRANKPIN,2 PACK	ESDP12
71002026	KIT,TIP SEAL, ESDP12	ESDP12
71004006	KIT,CRANKPIN,3 PACK	ESDP30,ESDP30A,GVSP30
71004026	KIT,TIP SEAL,ESDP30/30A,GVSP30	ESDP30

INDIVIDUAL SPARES

KITS (CONT.)

72601805	XDS TIP SEAL KIT	XDS5,XDS5C,XDS10,XDS10C
72601823	KIT,ROUTINE SERVICE,XDS5/10	XDS35I
73001801	TIP SEAL KIT	XDS35I ZDS35I
73001802	KIT,GENERAL SERVICE,XDS35I	XDS35I
98880240	KIT,SEAL SET,ESDP30/30A	ESDP30,ESDP30A,GVSP30
98882270	KIT,TIP SEAL,OEM,GVSP12,ISP250	ESDP12
98883240	KIT,TIP SEAL,OEM,GVSP30,ISP500	ESDP30
98882270	KIT,TIP SEAL,OEM,GVSP12,ISP250	ESDP12
98883240	KIT,TIP SEAL,OEM,GVSP30,ISP500	ESDP30
A30151825	SPARES KIT SHIM EH/QMB250/500A	EH250,QMB250,EH500,QMB500
A30551815	SPARES KIT CON C&O EH/QMB1200	EH1200,QMB1200
A30551820	SPARES KIT MODULE EH/QMB1200	EH1200,QMB1200
38611400	QDP40/80 SILENCER KIT	QDP40,QDP80
38611820	SPARES KIT SILENCER	
40130300D40	KIT,MAJOR,OVERHAUL,QDP40	DP40,QDP40,IQDP40
40130300D80	KIT,MAJOR,OVERHAUL,QDP80	DP80,QDP80,IQDP80
44003820	SPARES KIT CHECK VALVE CDP	
A50597800	SILENCER SPARES KIT	XDS5,XDS10
A50597801	SILENCER SPARES KIT, XDS20/30	ZDS35I
A52840800	SPARES KIT MOTOR REPL. QDP40	DP40,QDP40,IQDP40
52840830	SPARES KIT WATER ASSY QDP40/80	QDP40,QDP80
A52880800	SPARES KIT MOTOR REPL. QDP80	DP40,QDP40,IQDP40
53220032	SPARES KIT TEMP. SENSOR MOTOR IQDP	ALL QDP
A65201032	SPARES KIT CARTRIDGE RV3	RV3
A65201130	BLADE KIT RV3	RV3
A65201137	SPARES KIT C&O NIT RV	RV3,RV5,RV8,RV12
A65201700	SPARES KIT STATOR HV	RV3 RV3
A65201701	SPARES KIT ROTOR HV	RV3/5 RV3,RV5
A65201702	SPARES KIT STATOR LV	RV3/5 RV3,RV5
A65201703	SPARES KIT ROTOR LV	RV3/5 RV3,RV5
A65301032	SPARES KIT CARTRIDGE	RV5 RV5
A65301130	SPARES KIT BLADE RV5	RV5
A65301700	SPARES KIT STATOR HV RV5	RV5
A65401032	SPARES KIT CARTRIDGE RV8	RV8
A65401130	SPARES KIT BLADE RV8	RV8
A65401700	SPARES KIT STATOR HV RV8	RV8
A65401701	SPARES KIT ROTOR HV RV8	RV8
A65401702	SPARES KIT STATOR LV RV8/12	RV8,RV12
A65401703	SPARES KIT ROTOR LV RV8/12	RV8,RV12
A65501032	SPARES KIT CARTRIDGE RV12	RV12
A65501130	SPARES KIT BLADE RV12	RV12
A65501700	SPARES KIT STATOR HV RV12	RV12
A65501701	SPARES KIT ROTOR HV RV12	RV12
P65201131	KIT,CLEAN&OVERHAUL,RVP	RV3,RV5,RV8,RV12
P65201137	KIT,CLEAN&OVERHAUL,BUNA,RVP	RV3,RV5,RV8,RV12
P71004800	KIT,SERVICE,MAJOR,SCROLL	ESDP30,EDSP30A,GVSP30,SC30D,ISP500B
P71005800	KIT,REPAIR,MAJOR,SCROLL PUMP	GVSP-30B,ISB-500B ESDP12ISP250
10000401	KIT N2 INLET FLOWSWITCH QDP	ALL QDP

MISC.

40801057	SHIM,.07	iH80/160,iL70
40801058	SHIM,.10	iH80/160,iL70
40801059	SHIM,.125	iH80/160,iL70
40801078	SHIM,.04	iH80/160,iL70
40801049	GEAR SPACER	iH80/160,iL70
29201004	SIGHT GLASS	iH80/160,iL70
24301040	WOODRUFF KEY, 7/8X3/4	iH80/160,iL70
00714012	PLUG,OIL DRAIN,STEEL	E1M5,E1M8,E2M2,E2M5,E2M8
02308044	GAUZE,GAS BALLAST	E2M18,E1M18,E2M28,E2M30
02800016	PISTON,FACE	E2M275
1403030	OIL FILTER SEAL	E1M40,E2M40
20414003	BALL,STEEL	E2M2,E2M5,E2M8
22302013	PAD,FELT	E2M2,E2M5,E2M8,E2M12,E1M5,E1M8,E1M18,E2M18
22302017	PAD,FELT	E2M18,E2M28,E2M30,E1M5,E1M8,E1M18,E2M12
22302019	PAD,FELT	E2M1
22305014	KNITMESH	E1M175,E1M175S
22305015	KNITMESH	E1M275,E2M275
22305040	DISC,FELT	E1M275
22305045	MESH,INLET SCREEN	E2M1
22305056	INLET STRAINER MESH	E2M0.7,E2M1,E2M1.5
24867020	THERMAL SNAP SWITCH 95 DEGC	
25904601	BALLAST VALVE E1M80	E1M40,E2M40
25908051	MEMBER,DRIVE	E2M1
25908119	PLUG,OIL DRAIN,RV PUMPS	E1M18,E2M18
25908123	DIAPHRAM,EXHAUST,VITON,RVP	RV3,RV5,RV8,RV12

INDIVIDUAL SPARES

MISC. (CONT.)

26501018	DISC,FACE,VITON	E2M40,E2M80
26501029	PAD,VALVE	E2M2,E2M5,E2M8,E2M12,E2M18,E2M28/30,E1M5,E1M8,E1
26501036	PAD,CHECK VALVE,GAS BALLAST	E2M1,E2M12,E2M18,E2M40,E2M80
27159413	DISTRIBUTOR,RUBBER	E1M275
27159414	DISTRIBUTOR,RUBBER	E1M5,E1M8,E2M2,E2M5,E2M8,E2M12
27159414B	DISTRIBUTOR,RUBBER,BUNA	E2M5,E2M8
27159416	DIAPHRAM,E2M275	E2M275
27159430	DISTRIBUTOR,RUBBER	E1M18,E2M18,E2M28,E2M30
27159440	DISTRIBUTOR,RUBBER	E1M5,E1M8,E2M2,E2M5,E2M8,E2M12
27804004	SPACER,VALVE	E2M40,E2M80,E1M175,E1M275,E2M175,E2M275
29203002	PIN,SPRING	E2M18,E2M40,E2M80,E1M5,E1M8,E1M18,E2M12
29203003	PIN,BLADE SPRING,S/S	E1M5,E1M8,E2M2,E2M5,E2M8
36501024	MEMBER,DRIVE	E2M80
65201019	SHEET,DUCTING-MTR GS	RV3,RV5,RV8,RV12
71002006S	CRANKPIN,SINGLE	ESDP12
71004006S	CRANKPIN,SINGLE	ESDP30,ESDP30A,GVSP30
A00906058	OIL SIGHT GLASS CAP	E1M175,E1M175S,E1M275,E1M275S,E2M175,E2M275,E2M275S
A02800016	PISTON FACE	E2M175,E2M275
A11301045	BALLAST VALVE PTFE	E1M5,E1M8,E2M2,E2M5,E2M8
A20405007	INNER RING TYPE IR35	E1M175,E1M275
21913402	THERMAL SWITCH 88 DEG `C`N/C	
A22305040	BALLAST FILTER E1M175	E1M175,E1M275
A22305041	BALLAST FILTER FELT	E2M175,E2M275
A22305067	INLET STRAINER ASSY RV	DUO 10,DUO 10C
22903048	TIMING GEAR PAIR DP/QDP	40/80 DP40,DP80,QDP40,QDP80,IQDP40,IQDP80
A25908118	OIL FILLER PLUG RV	RV3,RV5,RV8,RV12
A25908123	EXHAUST DIAPHRAGM VITONÂ® RVP	RV12
A25908129	OIL PRESSURE VALVE RV	RV12
A25908226	RV DUMP VALVE	RV12
A25972004	DRIVE PLATE FOR E2M175/275 E	2M175
A26401207	HIGH / LOW VAC ROTOR E2M 0.7/1.5	E2M0.7,E2M1,E2M1.5
A27159614	BALLAST GASKET DC501.5MM	E2M175,E2M275
A27159615	BALLAST GASKET DC501.5MM THICK	E2M175,E2M275
A27159619	DISTRIBUTOR VALVE BODY GASKET	E1M175,E1M275
A27159633	BALLAST GASKET	E1M175,E1M275
A27802031	SOFT SLEEVE FOR EH1200 EDD1200	EH1200,QMB1200
A27802032	SOFT SLEEVE EH1200/EH2600	EH2600,EH4200
28702019	REPAIR TC VALVE, DANFOSS	
A34601067	BACK UP WASHER	E1M175,E1M175S
A34601070	GAS BALLAST JET EM175/275	E1M175,E1M175S
A36121014	DISTRIBUTOR VALVE E2M5/8/12	E2M2,E2M5,E2M8,E2M12
A37101702	END COVER E2M0.7/1.5	
A46233000	MF30 OUTLET MIST FILTER FITS	E2M28 MF30
52805000	QDP GAS CONTROL MODULE	ALL QDP
52819000	QDP EXHAUST SILENCER S/ST	ALL QDP
52840029	MAIN MANIFOLD ASSY QDP40/80	ALL QDP
53199011	THERMAL SNAP SWITCH 88DEG N/C	
53207000	TEMP. SENSOR EXHAUST GAS NW40	
53249000	WATER FLOW SWITCH	
A65201005	AIR BLEED ASSY RV	RV12
A65201029	RV REED VALVE	RV3,RV5,RV8,RV12
A73001803	BALLAST KIT XDS351	XDS351
A98881230	AIR FLUSH ASSEMBLY, SCROLL PUMP	ESDP30,EDSP30A,GVSP30,SC30D,ISP500B
37207800	ELECTRICS MODULE IQDP	ALL QDP
37207801	ELECTRICS MODULE FUSES IQDP PK3	ALL QDP
37207802	ELECTRICS MODULE FUSES IQMB PK3	IQMB
37207803	FUSES ELECTRICS CONTL PK10 X 2 SPARE	
37208800	SENSOR MONITOR MODULE IQ	IQMB
37209000	HAND HELD DISPLAY MODULE IQ	IQMB
H02104001	DOWTY SEAL 1/8" BSP MKA	E1M175,E1M275
H02104002	DOWTY SEAL 1/4" BSP MKB	E1M175,E1M275
H02104003	DOWTY SEAL 3/8" BSP MKC	SPEEDIVAC
H02104004	DOWTY SEAL 1/2" BSP MKD	E1M175,E1M275
H02104008	DOWTY SEAL 1" BSP MKH	EH1200,QMB1200
H02109076	B1 DIRECT VIT 30427	E2M175,E2M275
H02122012	D1BON `O`RING 14.1X1.6 SEC	E2M28,E2M30
03530015	QUICK CONNECT SOCKET QDP80	ALL QDP
H02122012	D1BON `O`RING 14.1X1.6 SEC	E2M28,E2M30
03530015	QUICK CONNECT SOCKET QDP80	ALL QDP
03530016	QUICK CONNECT MALE	
P211174033	PIN,ROLL,DIST.KIT,E2M2/5/8/12	E2M2,E2M5,E2M8,E2M12
P211284039	PIN,COTTER	E1M175,E1M275,E2M175,E2M275
P212170154	PIN,SPRING	E2M2,E2M5,E2M8,E2M12

INDIVIDUAL SPARES

MOTORS

A07113770	ELECTRIC MOTOR D90I C QDP PK1	ALL QDP
A07115770	ELECTRIC MOTOR D112M C QDP PK1	ALL QDP
A65297000	MOTOR UNIVERSAL 3? RV3/5	RV5,RV5
A65299000	MOTOR EUROPE/USA RV3/5	RV3,RV5
A65497000	MOTOR RV8/12 200-230/380-460/3PH/50/60	RV8,RV12
A65499000	MOTOR EUROPE/USA RV8/12	RV8,RV12
07113732	CANNED MOTOR	iL70(HEAC)
07113717	CANNED MOTOR	iL70

O-RINGS

00906042	SEAL, FILTER, (O'RING)	E1M5,E1M8,E2M2,E2M5,E2M8
02105115	O'RING,BUNA,ID 4.75 SEC 2.62MM	
02105115	O'RING,BUNA,ID 4.75 SEC 2.62MM	
02106010	O'RING,VITON,9.25 X 1.78 MM	
02120004	O'RING,BUNA,6.1 X 1.6 MM	E1M5,E1M8,E2M2,E2M5,E2M8
02120009	O'RING,BUNA,11.1 X 1.6 MM	E2M0.7,E2M1,E2M1.5
02120023	O'RING,BUNA,35.1 X 1.6 MM	EH250A,EH500A
02120027	O'RING,BUNA,5.23 X 2.62 MM	E1M40,E2M40
02120028	O'RING,BUNA,6.6 X 2.4 MM	E1M5,E1M8,E2M2,E2M5,E2M8
02120031	O'RING,BUNA,9.6 X 2.4 MM	
02120033	O'RING,BUNA,12 X 2.5 MM	E1M18,E2M18
02120034	O'RING,BUNA,12.6 X 2.4 MM	E2M0.7,E2M1,E2M1.5
02120035	O'RING,VITON,13.6 X 2.4 MM	E1M18,E2M18
02120036	O'RING,BUNA,14.6 X 2.4 MM,RVP	
02120037	O'RING,VITON,15.6 X 2.4 MM	E1M18,E2M18
02120041	O'RING,BUNA,19.6 X 2.4 MM	E1M5,E1M8,E2M2,E2M5,E2M8
02120042	O'RING,BUNA,21.6 X 2.4 MM	E2M0.7,E2M1,E2M1.5
02120051	O'RING,VITON,44.6 X 2.4 MM	EH1200
02120057	O'RING,BUNA,61.6 X 2.4 MM	E1M18,E2M18
25908051	MEMBER, DRIVE	E2M1
25908119	PLUG,OIL DRAIN,RV PUMPS	E1M18,E2M18
25908123	DIAPHRAM,EXHAUST,VITON,RVP	RV3,RV5,RV8,RV12
26501018	DISC,FACE,VITON	E2M40,E2M80
26501029	PAD,VALVE	E2M2,E2M5,E2M8,E2M12,E2M18,E2M28/30,E1M5,E1M8,E1
26501036	PAD,CHECK VALVE,GAS BALLAST	E2M1,E2M12,E2M18,E2M40,E2M80
27159413	DISTRIBUTOR,RUBBER	E1M275
27159414	DISTRIBUTOR,RUBBER	E1M5,E1M8,E2M2,E2M5,E2M8,E2M12
02120065	O'RING,BUNA,25 X 3 MM	E2M0.7,E2M1,E2M1.5
02120067	O'RING,BUNA,27.5 X 3 MM	E1M18,E2M18
02120067V	O'RING,VITON,30 X 3 MM	E2M18
02120068	O'RING,BUNA,30 X 3 MM	E2M28,E2M30
02120072	O'RING,BUNA,35.5 X 3 MM	E1M18,E2M18
02120077	O'RING,BUNA,42.5 X 3 MM	EH250A,EH500A
02120078	O'RING,BUNA,44.5 X 3 MM	E1M18,E2M18
02120078V	O'RING,VITON,44 X 3 MM	E2M18
02120082	O'RING,BUNA,64.5 X 3 MM	E1M40,E2M40
02120085	O'RING,BUNA,79.5 X 3 MM	E2M28,E2M30
02120087	O'RING,BUNA,89.2 X 3 MM	E2M28,E2M30
02120089	O'RING,BUNA,99.5 X 3 MM	E1M18,E2M18
02120094	O'RING,BUNA,124.5 X 3.0MM	E2M0.7,E2M1,E2M1.5
02120097	O'RING,BUNA,139.5 X 3 MM	E1M40,E2M40
02120101	O'RING,BUNA,157 X 3 MM	VC 100
02120118	O'RING,BUNA,52 X 5.7 MM	E2M0.7,E2M1,E2M1.5
02120165	O'RING,BUNA,419.3MM X 5.7MM	
02122009	O'RING,BUNA,11.1 X 1.6 MM	EH250A,EH500A
02122009V	O'RING,VITON,11 X 1.5 MM	E2M18,E2M28,E2M30,D05/08/12,D18/28,KVC5/8/12,KVC18
02122031	O'RING,VITON,9.6 X 2.4 MM	EH500 OLD,EH600 OLD,(W/WATER,COOLING)
02122033	O'RING,VITON,11.6 X 2.4 MM	EH500 OLD,EH600 OLD,(W/WATER,COOLING)
02122035	O'RING,VITON,13.6 X 2.4 MM	E2M28,E2M30
02122036	O'RING,BUNA,14.3 X 2.4 MM	E1M40,E1M80,E2M40,E2M80
02122037	O'RING,VITON,15.3 X 2.4 MM	E1M18,E2M18
02122055	O'RING,BUNA,57.6 X 2.4 MM	
02122057	O'RING,VITON,61.6 X 2.4 MM	
02122058	O'RING,VITON,61.6 X 3.5 MM	D05
02122079	O'RING,VITON,49.5 X 3 MM	D18,D28
02122083	O'RING,VITON,69.5X3MM	E1M18,E2M18
02122084	O'RING,VITON,74.5 X 3 MM	
02122091	O'RING,VITON,109.5 X 3 MM	EH250A,EH500A
02122097	O'RING,VITON,139.5 X 3 MM	
02122108	O'RING,VITON,194.5 X 3MM	E1M18,E2M18
02122159	O'RING,VITON,299.3 X 5.7 MM	EH1200
02123027	O'RING,VITON,5.6 X 2.4 MM	
02124002	O'RING,BUNA,15 X 5 MM	E2M0.7,E2M1,E2M1.5
02124003	O'RING,BUNA,18 X 5 MM	E2M40
02124005	O'RING,BUNA,28 X 5 MM	E2M28,E2M30
02124025	O'RING,VITON,28 X 5 MM	DUO 10, DUO 10C

INDIVIDUAL SPARES

O-RINGS (CONT.)

02124086	O'RING,BUNA,86 X 2 MM	E1M5,E1M8,E2M2,E2M5,E2M8
02124119	O'RING,VITON,12.42 X 1.78 MM	E1M40,E2M40
02124189	O'RING,VITON,60 X 3.5 MM	RA5001,RA3001S
02125011	O'RING,BUNA,10.77 X 2.62 MM	
02125013	O'RING,BUNA,13.94 X 2.62 MM	E1M5,E1M8,E2M2,E2M5,E2M8
02125020	O'RING,VITON,18.64 X 3.53 MM	E1M40,E2M40
02125023	O'RING,BUNA,23.39 X 3.53 MM	E1M175,E1M275
02125026	O'RING,VITON,28.17 X 3.53 MM	E1M5,E1M8,E2M2,E2M5,E2M8
02125028	O'RING,BUNA,31.34 X 3.53 MM	
02125039	O'RING,BUNA,91.67 X 3.53 MM	E1M175,E1M275
02125044	O'RING,BUNA,46.99 X 5.33 MM	E1M40
H02122012	D1BON 'O'RING 14.1X1.6 SEC	E2M28,E2M30
03530015	QUICK CONNECT SOCKET QDP80	ALL QDP
03530016	QUICK CONNECT MALE	
P211174033	PIN,ROLL,DIST.KIT,E2M2/5/8/12	E2M2,E2M5,E2M8,E2M12
P211284039	PIN,COTTER	E1M175,E1M275,E2M175,E2M275
P212170154	PIN,SPRING	E2M2,E2M5,E2M8,E2M12
02125055	O'RING,BUNA,85.09 X 5.33 MM	E1M175,E1M275
02125091	O'RING,BUNA,240.67 X 6.99 MM	E1M175,E1M275
02125114	O'RING,BUNA,11.10 X 1.78 MM	
02125115	O'RING,BUNA,4.42 X 2.62 MM	E1M40,E2M40
02125116	O'RING,BUNA,7.92 X 2.6 MM	E1M5,E1M8,E2M2,E2M5,E2M8
02125117	O'RING,BUNA,12.37 X 2.62 MM	VC200
02125130	O'RING,BUNA,21.89 X 2.62 MM	
02125171	O'RING,BUNA,66.27 X 3.53 MM	E1M175,E1M275
02125181	O'RING,BUNA,78.74 X 5.33 MM	E1M175,E1M275
02125260	O'RING,VITON,25.12 X 1.78 MM	EH1200
02125300	O'RING,BUNA,107.6 X 2.6 MM	E2M28,E2M30
02126010	O'RING,VITON,9.25 X 1.78 MM	
02126011	O'RING,VITON,10.77 X 2.62 MM	E1M40,E2M40
02126015	O'RING,VITON,17.12 X 2.62 MM	
02126020	O'RING,VITON,18.64 X 3.53 MM	
02126025	O'RING,VITON,26.57 X 3.53 MM	EH1200
02126026	O'RING,VITON,28 X 3.5 MM	E2M28,E2M30
02126028	O'RING,VITON,31.34 X 3.53 MM	EH250A,EH500A
02126030	O'RING,VITON,34.52 X 3.53 MM	E1M175,E1M275
02126047	O'RING,VITON,56.52 X 5.33 MM	E1M175,E1M275
02126050	O'RING,VITON,69.22 X 5.33 MM	E1M175,E1M275
02126116	O'RING,VITON,7.59 X 2.62 MM	E1M5,E1M8,E2M2,E2M5,E2M8
02126117	O'RING,VITON,12.37 X 2.62 MM	EH1200
02126121	O'RING,VITON,15.54 X 2.62 MM	EH250A,EH500A
06995973	O'RING,VITON,245X3,SCROLL PUMP	
06995974	O'RING,VITON,220 X 3MM	
23712041	O'RING,VITON,44.60 X 2.4 MM	EH1200
23714034	O'RING,VITON,19 X 3 MM	EH250,EH500
23714036	O'RING,VITON,150 X 3 MM	EH250,EH500
23714037	O'RING,VITON,233 X 3 MM	EH250,EH500
23714038	O'RING,VITON,174.5 X 3 MM	EH1200
23724-071	O RING NITRILE. INLET VALVE RV	RV12
27159503	O'RING,BUNA,86 X 2 MM	E2M5,E2M8,E2M12
320038	O'RING,BUNA,6.6 X 2.4 MM	E2M12 EURO,E2M8EURO,E2M5 EURO,E1M5EURO,E1M8 EURO,E1M12EURO,E2M2 EURO
320082	O'RING,VITON,44.04 X 3.53 MM	E2M5,E2M8,E2M12
320083	O'RING,VITON,86 X 2.5 MM	E2M12
320086	O'RING,VITON,14.5 X 1.5 MM	ESDP30,GVSP30
320087	O'RING,VITON,13.5 X 1.5 MM	
320121	O'RING,VITON, 36X1.5	
H02120077	O RING REAR COVER	RV12
H02120115	O RING SEAL SPEEDIVAC2	SPEEDIVAC
H02126020	O RING VIT 0210	E1M175,E1M275
P23712039	O'RING,VITON,7.6 X 2.4 MM,RVP	RV3,RV5,RV8,RV12
P23724070	O'RING,BUNA,32.5 X 3 MM,RVP	RV3,RV5,RV8,RV12
P23724071	O'RING,BUNA,49.5 X 3 MM,RVP	RV3,RV5,RV8,RV12
P23724072	O'RING,BUNA,69.5 X 3 MM,RVP	RV3,RV5,RV8,RV12
P23724073	O'RING,BUNA,21.5 X 3 MM,RVP	RV3,RV5,RV8,RV12

PLATES

25976005	PLATE,EXHAUST VALVE,E1M80	E1M80
40090702	HEADPLATE LV DP40/80	DP40,DP80,QDP40,QDP80,IQDP40,IQDP80
40819715	HEADPLATE	iH80/160
40802715	HEADPLATE	iL70

RINGS

26501020	RING,PISTON	E1M275
470014	RING,RETAINING,M16,472,S/S	ESDP12
A26501020	PISTON RING EM175/275	E1M175,E1M275

INDIVIDUAL SPARES

RINGS (CONT.)

40801055	PISTON RING 64MM	iL70
40801056	PISTON RING 57MM	iL70
40802085	PISTON RING 68MM	iL70

ROTORS

26401057	ROTOR,1ST STAGE	E1M175,E2M175
26401058	ROTOR,1ST STAGE,E2M275,E1M275	E1M275,E2M275
26401060	ROTOR,LOW VACUUM	E2M1
26401073	ROTOR,1ST STAGE,E2M28/30	E2M28,E2M30
26401207	ROTOR,HV/LV,E2M0.7/.5	E2M0.7,E2M1,E2M1.5
26401725	ROTOR,ASSEMBLY,E2M2	E2M2
26401728	ROTOR,ASSEMBLY E2M5	E2M5
26401731	ROTOR,ASSEMBLY,E2M8	E2M8
26401740	ROTOR,2ND STAGE,LV,E2M40	E2M40
26401742	ROTOR,2ND STAGE,LV,E2M80	E2M80
26401746	ROTOR,ASSEMBLY,E2M18	E2M18
26401747	ROTOR,ASSEMBLY,E1M18	E1M18
26401728	ROTOR,ASSEMBLY E2M5	E2M5
26401731	ROTOR,ASSEMBLY,E2M8	E2M8
26401740	ROTOR,2ND STAGE,LV,E2M40	E2M40
26401742	ROTOR,2ND STAGE,LV,E2M80	E2M80
26401746	ROTOR,ASSEMBLY,E2M18	E2M18
26401747	ROTOR,ASSEMBLY,E1M18	E1M18
26401770	ROTOR,ASSEMBLY,HV, E1/E2M40	E1M40,E2M40
26401771	ROTOR,2ND STAGE,LV,E2M28/30	E2M28,E2M30
26401777	ROTOR,2ND STAGE,LV,E2M175/275	E2M175,E2M275
26401780	ROTOR,1ST STAGE,E2M12	E2M12
26401781	ROTOR,ASSEMBLY,HV,E1/E2M80	E1M80,E2M80
65201701	ROTOR,HV,RV3/5	RV3,RV5
65201703	ROTOR,2ND STAGE,RVP3/5	RV3,RV5
65201705	ROTOR,OIL PUMP,ALL RVP'S	RV3,RV5,RV8,RV12
65401701	ROTOR,HV,RV8	RV8
65401703	ROTOR,2ND STAGE,RVP8/12	RV8,RV12
65501701	ROTOR,HV,RV12	RV12
A26401059	ROTOR HV E2M1.5	E2M1.5
A26401073	HV ROTOR E2M28/30	E2M28,E2M30
26401140	ROTOR 2ND STAGE X DP40	DP40,QDP40,IQDP40
26401141	ROTOR 2ND STAGE Y DP40	DP40,QDP40,IQDP40
26401142	ROTOR 3RD STAGE X DP40	DP40,QDP40,IQDP40
26401143	ROTOR 3RD STAGE Y DP40	DP40,QDP40,IQDP40
26401144	ROTOR XLV DP40	DP40,QDP40,IQDP40
26401145	ROTOR YLV DP40	DP40,QDP40,IQDP40
40191010	ROTOR 2ND STAGE X DP80	DP80,QDP80,IQDP80
40191011	ROTOR 2ND STAGE Y DP80	DP80,QDP80,IQDP80
40191012	ROTOR 3RD STAGE X DP80	DP80,QDP80,IQDP80
40191013	ROTOR 3RD STAGE Y DP80	DP80,QDP80,IQDP80
40191014	ROTOR XLV DP80	DP80,QDP80,IQDP80
40191015	ROTOR YLV DP80	DP80,QDP80,IQDP80
40801724	2ND STAGE X	iH80/160,iL70
40801725	2ND STAGE Y	iH80/160,iL70
40801726	3RD STAGE X	iH80/160,iL70
40801727	3RD STAGE Y	iH80/160,iL70
40801728	4TH STAGE X	iH80/160,iL70
40801729	4TH STAGE Y	iH80/160,iL70
40801723	HV ROTOR	iH80,iL70
40803723	HV ROTOR	iH160
40801730	LV ROTOR	iH80/160,iL70
A65201705	OIL PUMP ROTOR RV	RV3,RV5,RV8,RV12

SEALS

01403030V	SEAL,FILTER,VITON	E2M18,E2M30,E2M40,E2M80
02104001	SEAL,DOWTY	E2M1/1.5,E2M2/5/8,E1/E2M175,E1/E2M275,E2M12,E2M1
02104002	SEAL,DOWTY	E1M275,E2M40,E2M80
02104008	SEAL,DOWTY,BUNA,1 BSP	EH250A,EH500A
02104009	SEAL,DOWTY,1-1/4 BSP,BUNA	E2M40,E2M80,E2M175,E2M275
02104012	SEAL,DOWTY	E2M40,E2M80,E2M175,E2M275
02104014	SEAL,DOWTY	E2M40,E2M80
02104030	SEAL,DOWTY	E2M28,E2M30
02109008	SEAL,SHAFT	EDM6,EDM12,EDM20
02109026	SEAL,SHAFT,LIP,17 X 40 X 7MM	EDM6,EDM12,EDM20
02109052	SEAL,SHAFT,TEFLON,RED CASE	E2M40,E2M80,EH250,EH500
02109053	SEAL,SHAFT,PTFE,BI-DIRECTIONAL	EH1200
02109064	SEAL,SHAFT,VITON	E2M28,E2M40,E2M80,E1M5,E1M8,E1M18,E2M12,E2M18
02109064B	SEAL,SHAFT,BUNA	E2M28,E2M40,E2M80
02109066	SEAL,SHAFT,VIT,E1/E2M2/5/8,RVP	E2M2,E2M5,E2M8,E2M12,E1M5,E1M8,E1M18,E2M18,ALL RV

INDIVIDUAL SPARES

SEALS (CONT.)

02109067	SEAL,SHAFT,VITON	E2M2,E2M5,E2M8,E2M12,E2M18,E1M5,E1M8,E1M18
02109067B	SEAL,SHAFT,BUNA	E2M2,E2M5,E2M8,E2M12,E2M18
02109075	SEAL,SHAFT,VITON	EH250,EH500
02109076	SEAL,SHAFT,VITON	EH1200,E1M175,E1M275,E2M175,E2M275
02109077	SEAL,SHAFT,VITON	E1M275
02109078	SEAL,SHAFT	E2M0.7,E2M1,E2M1.5
02109079	SEAL,SHAFT,VIT,UNI-DRT,W/MCASE	E2M0.7,E2M1,E2M1.5
02109094	SEAL,SHAFT,VITON	E2M2,E2M5,E2M8,E2M12,E2M18,E2M28,E2M30,E2M40,E2M80
02109094B	SEAL,SHAFT,BUNA	E2M2,E2M5,E2M8,E2M12,E2M18,E2M28,E2M30,E2M40,E2M80
02109099	SEAL,SHAFT,VITON	E2M0.7,E2M1,E2M1.5
02109120	SEAL,SHAFT,CCW(CONICAL MODELS)	EH250,EH500,QMB250,QMB500
08804072	SEAL,SHAFT,26X37X6,GVSP30	ESDP30,EDSP30A,GVSP30,SC30D,ISP500B
08882100	SEAL,SHAFT,VITON,25X37X4.25MM	ESDP30,ESDP30A,GVSP30
08882150	SEAL,GREASE,W/GARTER SPRING	SDP-30A,ESDP30,GVSP30
08883001	G-SEAL,OS,SCROLL PUMP	ESDP12,ISP250
08883002	G-SEAL,FS-1,SCROLL PUMP	ESDP12,ISP250
08883003	SEAL,SHAFT,FS-2,SCROLL PUMP	ESDP12,ISP250
08883004	SEAL,SHAFT,FS-1,SCROLL PUMP	ESDP12,ISP250
08883005	G-SEAL,FS-2,SCROLL PUMP	ESDP12,ISP250
08885012	SHAFT SEAL, 20X32X8, GVSP30	ESDP30,EDSP30A,GVSP30,SC30D,ISP500B
09800043	SEAL,F/COVER	
22302005	SEAL,DUST	EH250,EH500
22302008	SEAL,DUST	EH1200
26501012	SEAL,SIGHT GLASS	E2M40,E2M80
26501012V	SEAL,SIGHT GLASS,VITON	E2M40,E2M80
26501040	SEAL,U,VITON,60 SHORE,RVP	RV3,RV5,RV8,RV12
27159401	SEAL,VITON	EDM6,EDM12,EDM20
27159415	SEAL,RUBBER,VITON	E2M40,E2M80
A27160008	SEAL CARRIER GASKET	RV3,RV5,RV8,RV12
H02109028	OIL SEAL 16357	SPEEDIVAC
H02109066	LIP SEAL VIT 25 35 7	RV12
H02109077	SIMBRIT SEAL 40-52-7 VITON	E1M175,E1M275
H02109124	SHAFT SEAL BABSL 20 X 30 X 7 RV	RV3,RV5,RV8,RV12
H02109125	OUTER SHAFT SEAL SPACER RV	RV3,RV5,RV8,RV12
H02109143	VITON,SHAFT SEAL 30X42X7 QTY 1	EH1200,QMB1200
26501012V	SEAL,SIGHT GLASS,VITON	E2M40,E2M80
26501040	SEAL,U,VITON,60 SHORE,RVP	RV3,RV5,RV8,RV12
27159401	SEAL,VITON	EDM6,EDM12,EDM20
27159415	SEAL,RUBBER,VITON	E2M40,E2M80
A27160008	SEAL CARRIER GASKET	RV3,RV5,RV8,RV12
H02109028	OIL SEAL 16357	SPEEDIVAC
H02109066	LIP SEAL VIT 25 35 7	RV12
H02109077	SIMBRIT SEAL 40-52-7 VITON	E1M175,E1M275
H02109124	SHAFT SEAL BABSL 20 X 30 X 7 RV	RV3,RV5,RV8,RV12
H02109125	OUTER SHAFT SEAL SPACER RV	RV3,RV5,RV8,RV12
H02109143	VITON,SHAFT SEAL 30X42X7 QTY 1	EH1200,QMB1200
40805732	SHAFT SEAL	iL70,iL600
40801097	ROTARY CARTRIDGE L.H. ASSEMBLY (PRE-LOADED)	iH80/160
40801096	ROTARY CARTRIDGE R.H. ASSEMBLY (PRE-LOADED)	iH80/160

SHAFTS

71002012	CRANKSHAFT,ESDP12	ESDP12
71003012	SHAFT,SCROLL PUMP,SDP-30	ESDP30,ESDP30A
26401732	HV ROTOR-DRIVEN"Y"DP40 PK1	DP40,QDP40,IQDP40
26401733	HV ROTOR-DRIVING "X" DP40 PK1	DP40,QDP40,IQDP40
26401775	HV ROTOR DRIVING DP80 QDP PK1	DP80,QDP80,IQDP80
26401776	HV ROTOR DRIVEN DP80 QDP PK1	DP80,QDP80,IQDP80
40801722	Y SHAFT	iH80
40302722	Y SHAFT	iL70
40809720	X SHAFT	iH80
40805720	X SHAFT	iL70
40803719	Y SHAFT	iH160
40803720	X SHAFT	iH160

SHIMS

27165001	SHIM,0.5MM EH500/1200	EH500,EH1200
27165008	SHIM,0.20MM EH250	EH250,EH500
27165010	SHIM,0.35MM EH250	EH250,EH500
27165011	SHIM,0.40MM EH250	EH250,EH500
27165018	SHIM,0.30MM EH250	EH250,EH500
A30751825	SHIM SPARE SET EH/QMB12/26/4200	EH1200,QMB1200

SIGHT GLASSES

29201006	SIGHT GLASS E1M80	E1M40,E1M80,E2M40,E2M80
----------	-------------------	-------------------------

INDIVIDUAL SPARES

SIGHT GLASSES (CONT.)

A01601089	OIL SIGHT GLASS	E1M175,E1M175S
A29201003	SIGHT GLASS SP11/E2M0.7/1.5	SPEEDIVAC

SLEEVES

20405009	SLEEVE,SHAFT	E2M40,E2M80
250014	SLEEVE,SPLIT,SET,INNER & OUTER,22 ID	AA100WN
250015	SLEEVE,SPLIT,SET,INNER & OUTER,28	AA100WN,AA70W
27820028	SLEEVE LV STAGE DP80	DP40,DP80,QDP40,QDP80,IQD
27820029	SLEEVE 3RD STAGE DP80	DP40,DP80,QDP40,QDP80,IQDP40,IQDP80
27820030	SLEEVE 2ND STAGE DP80	DP40,DP80,QDP40,QDP80,IQDP40,IQDP80
27820038	SLEEVE HEADPLATE DP40	DP80 DP40,DP80,QDP40,QDP80,IQDP40,IQDP80
40801068	2ND STAGE N-	iH80
40801031	2ND STAGE N	iH80
40801069	2ND STAGE N+	iH80
40803021	2ND STAGE N	iH160
30305055	2ND STAGE	iH160
40802016	2ND STAGE Y	iL70
40802018	2ND STAGE Y N-	iL70
40802033	2ND STAGE Y N+	iL70
40809062	3RD STAGE N-	iH80/160
40809060	3RD STAGE N	iH80/160
40809061	3RD STAGE N+	iH80/160
40802033	3RD STAGE X	iL70
40802034	3RD STAGE Y	iL70
40802070	3RD STAGE X N-	iL70
40802071	3RD STAGE X N+	iL70
40802072	3RD STAGE Y N-	iL70
40802073	3RD STAGE Y N+	iL70
40809072	4TH STAGE N-	iH80/160
40809070	4TH STAGE N	iH80/160
40809071	4TH STAGE N+	iH80/160
40806077	4TH STAGE N- (PLAIN)	iH160
40806075	4TH STAGE N (PLAIN)	iH160
40806076	4TH STAGE N+ (PLAIN)	iH160
40802035	4TH STAGE X	iL70
40802036	4TH STAGE Y	iL70
40802096	4TH STAGE X N-	iL70
40802097	4TH STAGE X	iL70
40802098	4TH STAGE Y N-	iL70
40802099	4TH STAGE Y N+	iL70
40809082	LV STAGE N-	iH80/160
40809080	LV STAGE N	iH80/160
40809081	LV STAGE N+	iH80/160
40802040	LV STAGE	iL70
40802094	LV STAGE N-	iL70
40802095	LV STAGE N+	iL70

SPRINGS

00307046	SPRING	E1M18,E2M18
00906077	SPRING,MW	E2M2,E2M5,E2M8,E2M12,E2M18
00906077A	SPRING,SS	E2M2,E2M5,E2M8,E2M12,E2M18
08801050	SPRING	ESDP12,ESDP30
08804390	SPRING,EXHAUST VALVE,ESDP30A	ESDP30A
09402048	SPRING	EDM6,EDM12,EDM20
20525-047	SPRING (DUMP VALVE) RV	RV12
20525-048	SPRING (BALLAST CONTROL) ST/ST	RV3,RV5,RV8,RV12
20525-049	SPRING (INLET VALVE) ST/ST RVP	RV12
27102013	SPRING,SS	E2M40,E2M80
27102016	SPRING	E2M1,E2M5,E2M8,E2M12
27102019	SPRING	E1M275
27102021	SPRING	E2M1,E2M2,E2M5,E2M8
27102023	SPRING	E1M275
27102024	SPRING,MW	E2M40,E2M80
27102029	SPRING,MW	E2M2,E2M5,E2M8
27102030	SPRING,EXHAUST VALVE	E2M18,E2M30
27102032	SPRING,DISTRIBUTOR	E1M5,E1M8,E2M2,E2M5,E2M8
27102033	SPRING,VALVE	E1M18,E2M18
27102034	SPRING	E2M0.7,E2M1,E2M1.5
27102036	SPRING,SS,E2M30	E2M30
27102041	SPRING	E2M28
27106002	SPRING,SS,EDM6/12/20	EDM6,EDM12,EDM20
490055	SPRING,SS GVSP-30B,ISB-500B	ESDP12ISP250
A27102010	SPRING BALLAST EM	E1M5,E1M8,E2M2,E2M5,E2M8
A27102022	SPRING E1M275	E1M175,E1M175S

INDIVIDUAL SPARES

STATORS

34301710	STATOR,1ST STAGE,HV,E2M18	E2M18
34601026	STATOR,HV	E1M175
34701026	STATOR,1ST STAGE,E1M275	E1M275
36001730	STATOR,1ST STAGE,HV,E2M2	E2M2
36101730	STATOR,1ST STAGE,HV,E2M5	E2M5
36201030	STATOR,1ST STAGE,HV,E1/2M8	E2M8,E1M8
36301714	STATOR,2ND STAGE,LV,E2M18	E2M18
36401702	STATOR,1ST STAGE,HV,E2M40	E2M40
36401712	STATOR,2ND STAGE,LV,E2M40	E2M40
36501744	STATOR,2ND STAGE,LV,E2M80/HFS	E2M80
36501772	STATOR,1ST STAGE,E2M80	E2M80
34601026	STATOR,HV	E1M175
34701026	STATOR,1ST STAGE,E1M275	E1M275
36001730	STATOR,1ST STAGE,HV,E2M2	E2M2
36101730	STATOR,1ST STAGE,HV,E2M5	E2M5
36201030	STATOR,1ST STAGE,HV,E1/2M8	E2M8,E1M8
36301714	STATOR,2ND STAGE,LV,E2M18	E2M18
36401702	STATOR,1ST STAGE,HV,E2M40	E2M40
36401712	STATOR,2ND STAGE,LV,E2M40	E2M40
36501744	STATOR,2ND STAGE,LV,E2M80/HFS	E2M80
36501772	STATOR,1ST STAGE,E2M80	E2M80
36601026	STATOR,1ST STAGE,HV,E2M175	E2M175
36601028	STATOR,2ND STAGE,LV,E2M275	E1M175,E1M275,E2M175,E2M275
36701026	STATOR,1ST STAGE,HV,E2M275	E2M275
37001030	STATOR,1ST STAGE,E2M12	E2M12
37101737	STATOR,E2M0.7/1.5	E2M0.7,E2M1,E2M1.5
37301730	STATOR,1ST STAGE,HV,E2M28/30	E2M28,E2M30
37301731	STATOR,2ND STAGE,LV,E2M28/30	E2M28,E2M30
65201700	STATOR,1ST STAGE,RVP3	RV3
65201702	STATOR,LV,RV3,RV5	RV3,RV5
65301700	STATOR,1ST STAGE,RVP5	RV5
65401700	STATOR,1ST STAGE,RVP8	RV8
65401702	STATOR,2ND STAGE,RVP8/12	RV8,RV12
65501700	STATOR,1ST STAGE,RVP12	RV12
40001702	STATOR 2ND STAGE DP40	DP40,QDP40,IQDP40
40001703	STATOR 3RD STAGE DP40	DP40,QDP40,IQDP40
40001704	STATOR LV DP40	DP40,QDP40,IQDP40
40001741	STATOR HV DP40	DP40,QDP40,IQDP40
40101702	STATOR 2ND STAGE DP80	DP80,QDP80,IQDP80
40101703	STATOR 3RD STAGE DP80	DP80,QDP80,IQDP80
40101704	STATOR LV DP80	DP80,QDP80,IQDP80
40101741	STATOR HV DP80	DP80,QDP80,IQDP80
40801711	STATOR 2ND STAGE	iH80/160
40802711	STATOR 2ND STAGE	iL70
40801712	STATOR 3RD STAGE	iH80/160
40802712	STATOR 3RD STAGE	iL70
40801713	STATOR 4TH STAGE	iH80
40802713	STATOR 4TH STAGE	iL70
40803713	STATOR 4TH STAGE	iH160
40801710	HV STATOR	iH80
40802710	HV STATOR	iL70
40819714	LV STATOR (2 GROOVE)	iH80
40802714	LV STATOR	iL70
40803710	HV STATOR	iH160
40803714	LV STATOR	iH160

VALVES

08802390	VALVE,EXHAUST,SDP-30A	GVSP30,ESDP30,SDP-30A
08805041	GUIDE,OUTLET VALVE	ESDP30
08805042	GUIDE,OUTLET VALVE	ESDP-12,ISP250
08805380	VALVE,EXHAUST,STEM,ESDP30	ESDP30
08805381	VALVE,EXHAUST STEM	ESDP12,ISP250
11101033	VALVE,EXHAUST	EDM6,EDM12,EDM20
19201007	VALVE PISTON	E1M40,E2M40
25906600	VALVE,BALLAST	E1M5,E1M8,E2M2,E2M5,E2M8
25908226	VALVE,DUMP BODY,RVP	RV3,RV5,RV8,RV12
26501035	VALVE,DISTRIBUTOR,VITON	E2M1.5
27159417	VALVE,HV,RUBBER	E2M5,E2M8
27159418	VALVE,HV,RUBBER	E2M2
27159504	VALVE,LV EXHAUST,VITON	E2M80,E1M175,E1M275,E2M175,E2M275
27159505	VALVE,EXHAUST,RUBBER	E2M175
27159506	VALVE,EXHAUST,HI-VAC	E2M275
27159509	VALVE,EXHAUST,VITON	E2M80
27159514	VALVE,EXHAUST,VITON	E2M40

INDIVIDUAL SPARES

VALVES (CONT.)

27159515	VALVE, LV EXHAUST, VITON	E2M40
27159516	VALVE, RUBBER, EXHAUST	E1M175, E2M275
27159517	VALVE, EXHAUST	E1M275, E2M275
27159541	VALVE, LV EXHAUST, VITON	E2M80
37001038	VALVE, DIST., CAP, E2M12	E2M12
A25904603	VALVE E1M175	E1M175, E1M275
A26501017	VALVE RUBBER LV E2M-12	E1M5, E1M8, E2M2, E2M5, E2M8
A26501036	VALVE PA E2M1.5 E2M18 PUMP	RV12
A27159516	EXHAUST VALVE RUBBER	E1M175, E1M275
A27159517	EXHAUST VALVE RUBBER	E1M175, E1M275
A27159620	EXHAUST VALVE GASKET 1.5MM THICK	E1M175, E1M275
A27804004	VALVE SPACER MEDIUM & LARGE EM PUMP	E1M175, E2M175, E1M275, E2M275
A34601042	VALVE PAD E1M175	E1M175, E1M275
44003000	EXHAUST CHECK VALVE	DP180, GV80, IL70, IL600, IH80, IH1000, IQ80, IQ40GV160,

VANES

20402079FR	VANE, GX, 2ND STAGE	E2M8, E2M12, E2M2
20402081FR	VANE, GX, 1ST STAGE	E2M2
20402083FR	VANE, GX, 1ST STAGE	E2M5
20402085FR	VANE, GX, 1ST STAGE	E2M8
20402087FR	VANE, GX, 2ND STAGE	E2M80
20402089FR	VANE, GX, 1ST STAGE	E2M80
20402098FR	VANE, GX, OIL PUMP	E1M275
20402099FR	VANE, GX, 1ST STAGE	E2M40
20402101FR	VANE, GX, 2ND STAGE	E2M40
20402117FR	VANE, FR, OIL PUMP	EDM20
20402120FR	VANE, GX, OIL PUMP	E2M18
20402121FR	VANE, GX, 2ND STAGE	E2M18
20402123FR	VANE, GX, 1ST STAGE	E2M18
20402125FR	VANE, GX, 1ST STAGE	E2M12
20402127FR	VANE, GX, 1ST STAGE	E1M175
20402129FR	VANE, GX, 1ST STAGE	E1M275
20402147FR	VANE, GX, OIL PUMP, E2M1.5	E2M1.5
20402150FR	VANE, GX, 2ND STAGE	E2M1, E2M5
20402153FR	VANE, GX, 1ST STAGE	E2M28
20402155FR	VANE, GX, 2ND STAGE	E2M28
20402157FR	VANE, GX, OIL PUMP	E2M30
20402158FR	VANE, GX, OIL PUMP	E2M2, E2M5, E2M8, E2M12
20402418FR	VANE, GX, OIL PUMP	E2M40S, E2M80S
20402500FR	VANE, OIL PUMP, GX	ALL RV
20402099FR	VANE, GX, 1ST STAGE	E2M40
20402101FR	VANE, GX, 2ND STAGE	E2M40
20402117FR	VANE, FR, OIL PUMP	EDM20
20402120FR	VANE, GX, OIL PUMP	E2M18
20402121FR	VANE, GX, 2ND STAGE	E2M18
20402123FR	VANE, GX, 1ST STAGE	E2M18
20402125FR	VANE, GX, 1ST STAGE	E2M12
20402127FR	VANE, GX, 1ST STAGE	E1M175
20402129FR	VANE, GX, 1ST STAGE	E1M275
20402147FR	VANE, GX, OIL PUMP, E2M1.5	E2M1.5
20402150FR	VANE, GX, 2ND STAGE	E2M1, E2M5
20402153FR	VANE, GX, 1ST STAGE	E2M28
20402155FR	VANE, GX, 2ND STAGE	E2M28
20402157FR	VANE, GX, OIL PUMP	E2M30
20402158FR	VANE, GX, OIL PUMP	E2M2, E2M5, E2M8, E2M12
20402418FR	VANE, GX, OIL PUMP	E2M40S, E2M80S
20402500FR	VANE, OIL PUMP, GX	ALL RV



*THIS PAGE IS
INTENTIONALLY LEFT BLANK*