

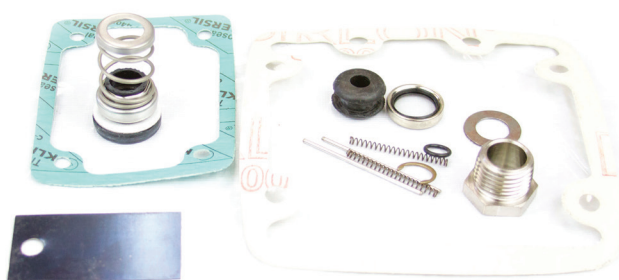
KITS

KIT BILL OF MATERIALS CAN BE FOUND LISTED ON THE 'KIT COMPONENTS' PAGES IMMEDIATELY FOLLOWING CORRESPONDING PUMP PAGES.

BEARING REPLACEMENT KITS

MINOR KITS INCLUDE O-RINGS, GASKETS, VALVES, WASHERS, SHAFT SEALS & OTHER COMPONENTS FOR LIGHT OVERHAUL.

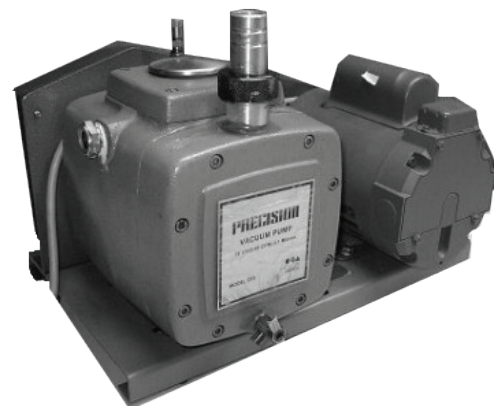
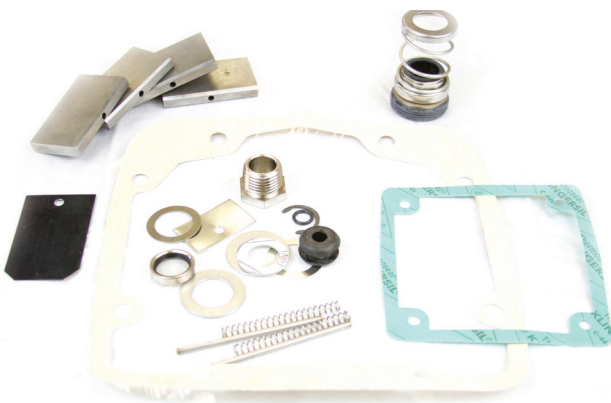
MODEL(S)	PART NUMBER
D 25	D25A
D 75	D75A
D 150	D150A



MAJOR KITS

MAJOR KITS INCLUDE ALL COMPONENTS OF MINOR KITS PLUS VANES, SPRINGS & SIGHT GLASS FOR MAJOR OVERHAUL.

MODEL(S)		PART NUMBER
D 25	(GX VANE)	D25BIT
D 25	(CAST IRON VANE)	D25B
D 75	(GX VANE)	D75BIT
D 75	(CAST IRON VANE)	D75B
D 150	(GX VANE)	D150BIT
D 150	(CAST IRON VANE)	D150B

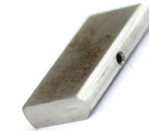


FEATURED SPARES

ALL AVAILABLE SPARES FOR THIS SERIES CAN BE FOUND LISTED ON THE 'INDIVIDUAL SPARES' PAGES AT THE END OF THIS SECTION.

VANES

MODEL(S)		PART NUMBER
D 25	(GX / 4)	535797G
D 25	(CAST IRON / 4)	535797
D 75	(GX / 4)	525418G
D 75	(CAST IRON / 4)	525418
D 150	(GX / 4)	525471G
D 150	(CAST IRON 4)	525471



SHAFTS

MODEL(S)	PART NUMBER
D 25	528398
D 75	528399
D 150	528400



SHAFT SEALS (MECHANICAL)

MODEL(S)	PART NUMBER
D 25	342005
D 75	342003
D 150	342004



GASKETS

MODEL(S)	PART NUMBER
D 25	(COVER) 525682
D 75/150	(COVER) 525433
D 25	525694
D 75	525432
D 150	525473



RECOMMENDED OILS

TYPE	PART NUMBER
PLUS DUO (1L/1.06QT) GENERAL PURPOSE OIL (EQU. TO DUOSEAL)	PP100001
PLUS GOLD (1L/1.06QT) FULLY SYNTHETIC OIL	PPGOLD001
PLUS FF (1L/1.06QT) FLUSHING FLUID	PPFF001



KIT COMPONENTS

PART NUMBER	ITEM DESCRIPTION	D25 MINOR D25A	D25 MAJOR D25BIT	D25 MAJOR D25B	D75 MINOR D75A	D75 MAJOR D75BIT	D75 MAJOR D75B	D150 MINOR D150A	D150 MAJOR D150BIT	D150 MAJOR D150B
325017	C-CLIP				1	1	1			
325018	C-CLIP							1	1	1
325023	C-CLIP	1	1	1						
525433	GASKET,COVER				1	1	1	1	1	1
525682	GASKET,COVER	1	1	1						
525473	GASKET,D150							1	1	1
525694	GASKET,D25	1	1	1						
525432	GASKET,D75				1	1	1			
245074	GROMMET	1	1	1	1	1	1	1	1	1
232095	O'RING,BUNA,7.65 X 1.63 MM	1	1	1	1	1	1	1	1	1
525419	PIN,SPRING				2	2	2			
525420	PIN,SPRING							2	2	2
525686	PIN,SPRING	2	2	2						
525724	PLATE,VALVE,S/S				1	1	1	1	1	1
342005	SEAL,SHAFT,MECHANICAL,1/2"	1	1	1						
342004	SEAL,SHAFT,MECHANICAL,3/4"							1	1	1
342003	SEAL,SHAFT,MECHANICAL,5/8"				1	1	1			
280017	SIGHT GLASS,PUSH IN TYPE	1	1	1	1	1	1	1	1	1
280027	SIGHT GLASS,THREADED TYPE	1	1	1	1	1	1	1	1	1
532112	SPRING,VALVE				1	1	1	1	1	1
528387	SPRING,VANE, D25	2	2	2						
525422	SPRING,VANE,D150							2	2	2
525421	SPRING,VANE,D75				2	2	2			
532784	VALVE,EXHAUST	1	1	1						
525418G	VANE GX					4				
525471G	VANE GX								4	
535797G	VANE GX		4							
525418	VANE,CAST IRON						4			
525471	VANE,CAST IRON									4
535797	VANE,CAST IRON			4						
525497	WASHER				1	1	1	1	1	1
525476	WASHER,SEAL,S/STEEL							2	2	2
525436	WASHER,THRUST				1	2	2			
525437	WASHER,THRUST				2	2	2			
525683	WASHER,THRUST	2	2	2						
525475	WASHER,THRUST,S/STEEL							2	2	2

KITS

KIT BILL OF MATERIALS CAN BE FOUND LISTED ON THE 'KIT COMPONENTS' PAGES IMMEDIATELY FOLLOWING CORRESPONDING PUMP PAGES.

MINOR KITS

MINOR KITS INCLUDE COUPLING ELEMENT, C-CLIPS, O-RINGS, WASHERS, GASKETS, VALVES, WASHERS, SHAFT SEALS & OTHER COMPONENTS FOR LIGHT OVERHAUL.

MODEL(S)	PART NUMBER
ALL	52610



MAJOR KITS

MAJOR KITS INCLUDE ALL COMPONENTS OF MINOR KITS PLUS VANES, SPRINGS, SIGHT GLASS & DRAIN PLUG FOR MAJOR OVERHAUL.

MODEL(S)	PART NUMBER
DD 90	52614FR
DD 195	52613FR
DD 310	52611FR



FEATURED SPARES

ALL AVAILABLE SPARES FOR THIS SERIES CAN BE FOUND LISTED ON THE 'INDIVIDUAL SPARES' PAGES AT THE END OF THIS SECTION.

ROTORS

MODEL(S)		PART NUMBER
DD 90	(1ST-LP)	52513
DD 195	(1ST-LP)	52512
DD 310	(1ST-LP)	52509
ALL	(2ND-HP)	52715



STATORS

MODEL(S)		PART NUMBER
DD 90	(1ST-LP)	52572
DD 195	(1ST-LP)	52582
DD 310	(1ST-LP)	52574
ALL	(2ND-HP)	52711



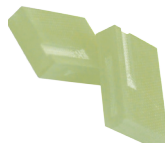
PLATES

MODEL(S)		PART NUMBER
ALL	(FRONT)	52575
ALL	(INT)	52573
ALL	(REAR)	52686



VANES

MODEL(S)		PART NUMBER
DD 90	(1ST-LP)	83946FR
DD 195	(1ST-LP)	53106FR
DD 310	(1ST-LP)	83946FR
ALL	(2ND-HP)	83946FR



RECOMMENDED OILS

TYPE	PART NUMBER
PLUS 19 (1L/1.06QT) GENERAL PURPOSE OIL	PP19001
PLUS GOLD (1L/1.06QT) FULLY SYNTHETIC OIL	PPGOLD001
PLUS FF (1L/1.06QT) FLUSHING FLUID	PPFF001



KIT COMPONENTS

PART NUMBER	ITEM DESCRIPTION	ALL MINOR 52610	DD90 MAJOR 52614FR	DD195 MAJOR 52613FR	DD310 MAJOR 52611FR
82522	BALL,GAS BALLAST	1	1	1	1
71161	C-CLIP,2004/8/12/20AAC	1	1	1	1
83653	C-CLIP,STEEL,2004/8/12/20A	2	2	2	2
52642	CLAPPER,EXHAUST,BUNA	1	1	1	1
52557	CLAPPER,EXHAUST,VITON	1	1	1	1
52553	COUPLER,ELASTIC,2004-20A/AC	1	1	1	1
52755	GASKET,CASE,2004/8/12/20AACCP	1	1	1	1
52555	GASKET,FAN PLATE	1	1	1	1
83649	KEY,SHAFT				1
52750	LEVER,ASB,BUNA,2004/8/12/20A		1	1	1
54340V	NIB,ASB,VITON,2004/8/12/20AAC	1			1
84149	O'RING,BUNA,16 X 2 MM	2	2	2	2
82120	O'RING,BUNA,26.57 X 3.53 MM	1	1	1	1
79238	O'RING,BUNA,28 X 5 MM	1	1	1	1
82122	O'RING,BUNA,29.3 X 3.6 MM	1	1	1	1
83633	O'RING,BUNA,38 X 2.5 MM	1	1	1	1
82105	O'RING,BUNA,5 X 2 MM	1	1	1	1
82033	O'RING,VITON,82 X 2 MM	5	5	5	5
52990	PAD,FELT,2004A-2020CP	1	1	1	1
71050	PIN,DOWEL,2004/8/12/20A	1	1	1	1
54071	PIN,RETAINING	1	1	1	1
82604	PLUG,DRAIN,PLASTIC,2004A-2063C		2	2	2
82063	SEAL,SHAFT,VITON	4	4	4	4
83546	SIGHT GLASS,PLASTIC,W/SEAL		1	1	1
52563	SPRING,GAS BALLAST	1	1	1	1
52564	SPRING,GAS BALLAST,BALL	1	1	1	1
52541	SPRING,VALVE	4	2	3	4
53040	SPRING,VANE,MW		12	14	8
52655	VALVE,DSCHRG,VITON,2004-20AAC	4	2	3	4
52562B	VALVE,GAS BALLAST,BUNA	1	1	1	1
53106FR	VANE,GX,1ST STAGE			2	
83945FR	VANE,GX,1ST STAGE				2
83946FR	VANE,GX,2ND STAGE		4	2	2
73339	WASHER,FLAT,SMALL O.D.,S.S.,M4	3	3	3	3
73460	WASHER,WAVED,S.S.,M6	9	9	9	9
73461	WASHER,WAVED,S.S.,M8	6	6	6	6

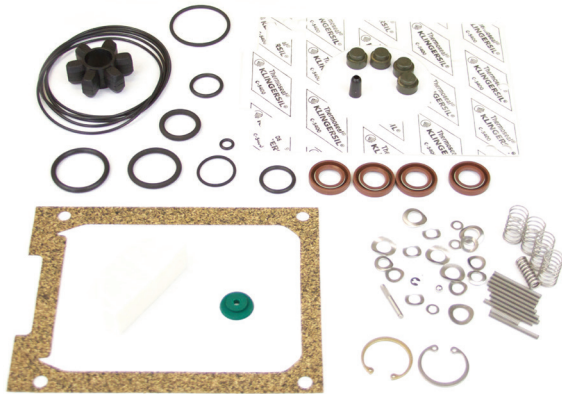
KITS

KIT BILL OF MATERIALS CAN BE FOUND LISTED ON THE 'KIT COMPONENTS' PAGES IMMEDIATELY FOLLOWING CORRESPONDING PUMP PAGES.

MINOR KITS

MINOR KITS INCLUDE COUPLING ELEMENT, C-CLIPS, O-RINGS, WASHERS, GASKETS, VALVES, WASHERS, SHAFT SEALS & OTHER COMPONENTS FOR LIGHT OVERHAUL.

MODEL(S)	PART NUMBER
ALL	52624



MAJOR KITS

MAJOR KITS INCLUDE ALL COMPONENTS OF MINOR KITS PLUS VANES, SPRINGS, SIGHT GLASS & DRAIN PLUG FOR MAJOR OVERHAUL.

MODEL(S)	PART NUMBER
DDC 195	52626FR
DDC 310	52625FR



FEATURED SPARES

ALL AVAILABLE SPARES FOR THIS SERIES CAN BE FOUND LISTED ON THE 'INDIVIDUAL SPARES' PAGES AT THE END OF THIS SECTION.

ROTORS

MODEL(S)		PART NUMBER
DDC1 95	(1ST-LP)	52535
DDC 310	(1ST-LP)	52533
ALL	(2ND-HP)	52715



STATORS

MODEL(S)		PART NUMBER
DDC 195	(1ST-LP)	52582
DDC 310	(1ST-LP)	52574
ALL	(2ND-HP)	52711



PLATES

MODEL(S)		PART NUMBER
ALL	(FRONT)	52575
ALL	(INT)	52650
ALL	(REAR)	52687



VANES

MODEL(S)		PART NUMBER
DDC 195	(1ST-LP)	53106FR
DDC 310	(1ST-LP)	83945FR
ALL	(2ND-HP)	83946FR



SHAFT SEALS (VITON)

MODEL(S)	PART NUMBER
ALL	82063



RECOMMENDED OILS

TYPE	PART NUMBER
PLUS 19 (1L/1.06QT) GENERAL PURPOSE OIL	PP19001
PLUS GOLD (1L/1.06QT) FULLY SYNTHETIC OIL	PPGOLD001
PLUS FF (1L/1.06QT) FLUSHING FLUID	PPFF001



KIT COMPONENTS

PART NUMBER	ITEM DESCRIPTION	ALL MINOR 52624	DDC195 MAJOR 52626FR	DDC310 MAJOR 52625FR
82522	BALL,GAS BALLAST	1	1	1
71161	C-CLIP,2004/8/12/20AAC	1	1	1
71181	C-CLIP,S.S.,2004/8/12/20AC	2	2	2
52557	CLAPPER,EXHAUST,VITON	1	1	1
52553	COUPLER,ELASTIC,2004-20A/AC	1	1	1
52755	GASKET,CASE,2004/8/12/20AACCP	1	1	1
52555	GASKET,FAN PLATE	1	1	1
83649	KEY,SHAFT		1	1
52700	LEVER,ASB,VITON,2012/20A&C		1	1
54340V	NIB,ASB,VITON,2004/8/12/20AAC		1	1
82022	O'RING,VITON,17.12 X 2.62 MM	2	2	2
82021	O'RING,VITON,19.8 X 3.6 MM	1	1	1
79133	O'RING,VITON,21 X 2 MM	1	1	1
79268	O'RING,VITON,26.2 X 3.6 MM	1	1	1
82025	O'RING,VITON,29.3 X 3.6 MM	1	1	1
82056	O'RING,VITON,37 X 2.5 MM	1	1	1
82004	O'RING,VITON,5.7 X 1.9 MM	1	1	1
82033	O'RING,VITON,82 X 2 MM	5	5	5
52990	PAD,FELT,2004A-2020CP	1	1	1
71050	PIN,DOWEL,2004/8/12/20A		1	1
54071	PIN,RETAINING	1	1	1
52752	PLUG,DRAIN		1	1
82063	SEAL,SHAFT,VITON	4	4	4
52683	SIGHT GLASS,DISC		1	1
83546	SIGHT GLASS,PLASTIC,W/SEAL		1	1
52563	SPRING,GAS BALLAST	1	1	1
52564	SPRING,GAS BALLAST,BALL	1	1	1
52541	SPRING,VALVE	4	3	4
53040	SPRING,VANE,MW		6	8
52655	VALVE,DSCHRG,VITON,2004-20AAC	4	3	4
52562B	VALVE,GAS BALLAST,BUNA	1	1	1
53106FR	VANE,GX,1ST STAGE		2	
83945FR	VANE,GX,1ST STAGE			2
83946FR	VANE,GX,2ND STAGE		2	2
73339	WASHER,FLAT,SMALL O.D.,S.S.,M4	3	3	3
73460	WASHER,WAVED,S.S.,M6	9	9	9
73461	WASHER,WAVED,S.S.,M8	6	6	6

KITS

KIT BILL OF MATERIALS CAN BE FOUND LISTED ON THE 'KIT COMPONENTS' PAGES IMMEDIATELY FOLLOWING CORRESPONDING PUMP PAGES.

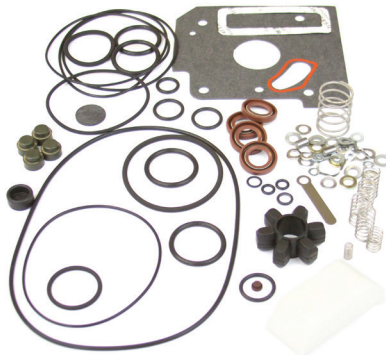
FRONT SEAL KITS

MODEL(S)	PART NUMBER
ALL	65612

MINOR KITS

MINOR KITS INCLUDE O-RINGS, VALVES, WASHERS, SHAFT SEALS & OTHER COMPONENTS FOR LIGHT OVERHAUL.

MODEL(S)	PART NUMBER
ALL	65611



MAJOR KITS

MAJOR KITS INCLUDE ALL COMPONENTS OF MINOR KITS PLUS VANES, SPRINGS, SIGHT GLASS, COUPLING ELEMENT & DRAIN PLUG FOR MAJOR OVERHAUL.

MODEL(S)	PART NUMBER
DDC 100	65606FR
DDC 200	65609FR
DDC 300	65613FR
DDC 420	65615FR

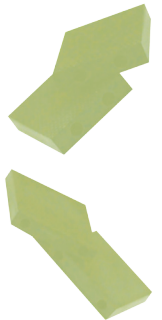


FEATURED SPARES

ALL AVAILABLE SPARES FOR THIS SERIES CAN BE FOUND LISTED ON THE 'INDIVIDUAL SPARES' PAGES AT THE END OF THIS SECTION.

VANES

MODEL(S)		PART NUMBER
DDC 100	(1ST)	65760FR
DDC 100	(2ND)	65760FR
DDC 200	(1ST)	65757FR
DDC 200	(2ND)	65756FR
DDC 300	(1ST)	65758FR
DDC 300	(2ND)	65756FR
DDC 420	(1ST)	65759FR
DDC 420	(2ND)	65756FR



ROTORS

MODEL(S)		PART NUMBER
DDC 100	(1ST-LP)	65601
DDC 200	(1ST-LP)	65801
DDC 300	(1ST-LP)	65802
DDC 420	(1ST-LP)	65803
DDC 100	(2ND-HP)	65602
DDC 200/300/420	(2ND-HP)	65824



RECOMMENDED OILS

TYPE	PART NUMBER
PLUS 19 (1L/1.06QT) GENERAL PURPOSE OIL	PP19001
PLUS GOLD (1L/1.06QT) FULLY SYNTHETIC OIL	PPGOLD001
PLUS FF (1L/1.06QT) FLUSHING FLUID	PPFF001



KIT COMPONENTS

PART NUMBER	ITEM DESCRIPTION	ALL SEAL 65612	ALL MINOR 65611	DDC100 MAJOR 65606FR	DDC200 MAJOR 65609FR	DDC300 MAJOR 65613FR	DDC420 MAJOR 65615FR
65861	BLADE,2005/10/15/21C&CP		1	1	1	1	1
52553	COUPLER,ELASTIC,2004-20A/AC		1	1	1	1	1
65798	DEVICE,ASB,VITON,2010/15/21C		1	1	1	1	1
65795	GASKET,CASE,2005/10/15/21C		1	1	1	1	1
65789	GASKET,SIGHT GLASS		1	1	1	1	1
71067	KEY,SHAFT			1	1	1	1
65857	MEMBRANE		1	1	1	1	1
320036	O'RING,VITON,12.1 X 2.7 MM	1					
82024	O'RING,VITON,12.37 X 2.62 MM		1	1	1	1	1
79148	O'RING,VITON,165 X 3 MM		1	1	1	1	1
82022	O'RING,VITON,17.12 X 2.62 MM		3	3	3	3	3
79509	O'RING,VITON,28 X 3 MM		1	1	1	1	1
82025	O'RING,VITON,29.3 X 3.6 MM		4	4	4	4	4
82014	O'RING,VITON,34.1 X 3.6 MM	1	1	1	1	1	1
82004	O'RING,VITON,5.7 X 1.9 MM		2	2	2	2	2
320067	O'RING,VITON,63.09 X 3.53 MM		1	1	1	1	1
79516	O'RING,VITON,66 X 2.5 MM		1	1	1	1	1
82003	O'RING,VITON,7.2 X 1.9 MM		1	1	1	1	1
79537	O'RING,VITON,7.5 X 1.5 MM		1	1	1	1	1
79513	O'RING,VITON,90 X 2 MM		4	4	4	4	4
65794	PAD,FELT,2005/10/15/21C		1	1	1	1	1
720007	PAD,FELT,2010C2/15SD/05C1/21C2	1					
71040	PIN,CENTERING,2004-63AAC-C		2	2	2	2	2
52752	PLUG,DRAIN			3	3	3	2
250010	RING,SHOULDERED,2010C2/2021C2	1					
65823	RING,SHOULDERED,COATED			1	1	1	1
82063	SEAL,SHAFT,VITON	1	4	4	4	4	4
65784	SIGHT GLASS,2010/15/21CP				1	1	1
65786	SIGHT GLASS,PASCAL C			1	1	1	1
65792	SLEEVE,GAS BALLAST		1	1	1	1	1
65617	SPRING		1	1	1	1	1
65797	SPRING		1	1	1	1	1
65799	SPRING		1	1	1	1	1
52541	SPRING,VALVE		4	2	3	4	4
53040	SPRING,VANE,MW			8	6	8	8
52655	VALVE,DSCHRG,VITON,2004-20AAC		4	2	3	4	4
65757FR	VANE,GX,1ST STAGE				2		
65758FR	VANE,GX,1ST STAGE					2	
65759FR	VANE,GX,1ST STAGE						2
65760FR	VANE,GX,1ST STAGE			4			
65756FR	VANE,GX,2ND STAGE				2	2	2
73301	WASHER,FLAT,PLATED STEEL,M6		4	4	4	4	4
73304	WASHER,FLAT,STEEL,M5		2	2	2	2	2
84646	WASHER,WAVED		1	1	1	1	1
73460	WASHER,WAVED,S.S.,M6		8	8	8	8	8
73452	WASHER,WAVED,STEEL,M4		4	4	4	4	4
73453	WASHER,WAVED,STEEL,M5		1	1	1	1	1
73454	WASHER,WAVED,STEEL,M6		10	10	10	10	10

KITS

KIT BILL OF MATERIALS CAN BE FOUND LISTED ON THE 'KIT COMPONENTS' PAGES IMMEDIATELY FOLLOWING CORRESPONDING PUMP PAGES.

FRONT SEAL KITS

MODEL(S)	PART NUMBER
ALL	65875

MINOR KITS

MINOR KITS INCLUDE O-RINGS, GASKETS, VALVES, WASHERS, SHAFT SEALS & OTHER COMPONENTS FOR LIGHT OVERHAUL.

MODEL(S)	PART NUMBER
ALL	65874



MAJOR KITS

MAJOR KITS INCLUDE ALL COMPONENTS OF MINOR KITS PLUS VANES, SPRINGS, SIGHT GLASS, COUPLING ELEMENT & DRAIN PLUG FOR MAJOR OVERHAUL.

MODEL(S)	PART NUMBER
DD 100	65885FR
DD 200	65883FR
DD 300	65882FR
DD 420	65881FR

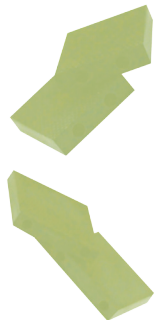


FEATURED SPARES

ALL AVAILABLE SPARES FOR THIS SERIES CAN BE FOUND LISTED ON THE 'INDIVIDUAL SPARES' PAGES AT THE END OF THIS SECTION.

VANES

MODEL(S)		PART NUMBER
DD 100	(1ST)	65760FR
DD 100	(2ND)	65760FR
DD 200	(1ST)	65757FR
DD 200	(2ND)	65756FR
DD 300	(1ST)	65758FR
DD 300	(2ND)	65756FR
DD 420	(1ST)	65759FR
DD 420	(2ND)	65756FR



ROTORS

MODEL(S)		PART NUMBER
DD 100	(1ST-LP)	65745
DD 200	(1ST-LP)	65749
DD 300	(1ST-LP)	65750
DD 420	(1ST-LP)	65751
DD 100	(2ND-HP)	65729
ALL	(2ND-HP)	65728



RECOMMENDED OILS

TYPE	PART NUMBER
PLUS 19 (1L/1.06QT) GENERAL PURPOSE OIL	PP19001
PLUS GOLD (1L/1.06QT) FULLY SYNTHETIC OIL	PPGOLD001
PLUS FF (1L/1.06QT) FLUSHING FLUID	PPFF001



KIT COMPONENTS

PART NUMBER	ITEM DESCRIPTION	ALL SEAL 65875	ALL MINOR 65874	DD100 MAJOR 65885FR	DD200 MAJOR 65883FR	DD300 MAJOR 65882FR	DD420 MAJOR 65881FR
65861	BLADE,2005/10/15/21C&CP		1	1	1	1	1
52553	COUPLER,ELASTIC,2004-20A/AC		1	1	1	1	1
65798	DEVICE,ASB,VITON,2010/15/21C		1	1	1	1	1
65795	GASKET,CASE,2005/10/15/21C		1	1	1	1	1
71067	KEY,SHAFT			1	1	1	1
65857	MEMBRANE		1	1	2	1	1
84149	O'RING,BUNA,16 X 2 MM		3	3	3	3	3
320036	O'RING,VITON,12.1 X 2.7 MM	1	1	1	1	1	1
79148	O'RING,VITON,165 X 3 MM		1	1	1	1	1
79509	O'RING,VITON,28 X 3 MM		1	1	1	1	1
82025	O'RING,VITON,29.3 X 3.6 MM		4	4	4	4	4
82014	O'RING,VITON,34.1 X 3.6 MM	1	1	1	1	1	1
82004	O'RING,VITON,5.7 X 1.9 MM		3	2	2	2	2
320067	O'RING,VITON,63.09 X 3.53 MM		1	1	1	1	1
79516	O'RING,VITON,66 X 2.5 MM		1	1	1	1	1
79537	O'RING,VITON,7.5 X 1.5 MM		1	1	1	1	1
40005	O'RING,VITON,9.25 X 1.78 MM		1				
79513	O'RING,VITON,90 X 2 MM		4	4	4	4	4
53474	OIL,JET			1	1	1	1
65794	PAD,FELT,2005/10/15/21C		1	1	1	1	1
720007	PAD,FELT,2010C2/15SD/05C1/21C2	1					
71040	PIN,CENTERING,2004-63AAC-C		2	11	11	11	11
82604	PLUG,DRAIN,PLASTIC,2004A-2063C			3	3	3	3
250011	RING,SHOULDERED,2015SD/05C1	1					
65846	RING,SHOULDERED,STANDARD			1	1	1	1
82063	SEAL,SHAFT,VITON	1	4	4	4	4	4
65784	SIGHT GLASS,2010/15/21CP			1	1	1	1
65792	SLEEVE,GAS BALLAST		1	1	1	1	1
65617	SPRING			1	1	1	1
65797	SPRING		1	1	1	1	1
65799	SPRING		1	1	1	1	1
52541	SPRING,VALVE			2	3	4	4
53040	SPRING,VANE,MW			4	6	8	8
52655	VALVE,DSCHRG,VITON,2004-20AAC		4	4	4	4	4
65791	VALVE,FOR PASCAL PUMP		1	1	1	1	1
65757FR	VANE,GX,1ST STAGE				2		
65758FR	VANE,GX,1ST STAGE					2	
65759FR	VANE,GX,1ST STAGE						2
65760FR	VANE,GX,1ST STAGE			4			
65756FR	VANE,GX,2ND STAGE				2	2	2
73301	WASHER,FLAT,PLATED STEEL,M6		4	4	4	4	4
73304	WASHER,FLAT,STEEL,M5		2	2	2	2	2
84646	WASHER,WAVED		1	1	1	1	1
73452	WASHER,WAVED,STEEL,M4		4	4	4	4	4
73453	WASHER,WAVED,STEEL,M5		1	1	1	1	1
73454	WASHER,WAVED,STEEL,M6		10	18	18	18	18

KITS

KIT BILL OF MATERIALS CAN BE FOUND LISTED ON THE 'KIT COMPONENTS' PAGES IMMEDIATELY FOLLOWING CORRESPONDING PUMP PAGES.

FRONT SEAL KITS

MODEL(S)	PART NUMBER
ALL	65875

MINOR KITS

MINOR KITS INCLUDE O-RINGS, GASKETS, VALVES, WASHERS, SHAFT SEALS & OTHER COMPONENTS FOR LIGHT OVERHAUL.

MODEL(S)	PART NUMBER
ALL	103911



MAJOR KITS

MAJOR KITS INCLUDE ALL COMPONENTS OF MINOR KITS PLUS VANES, SPRINGS, SIGHT GLASS, COUPLING ELEMENT & DRAIN PLUG FOR MAJOR OVERHAUL.

MODEL(S)	PART NUMBER
P/PX 100	103902FR
P/PX 200	103903FR
P/PX 300	103904FR
P/PX 420	103905FR



FEATURED SPARES

ALL AVAILABLE SPARES FOR THIS SERIES CAN BE FOUND LISTED ON THE 'INDIVIDUAL SPARES' PAGES AT THE END OF THIS SECTION.

VANES

MODEL(S)	PART NUMBER
P/PX 100 (1ST-LP)	65760FR
P/PX 200 (1ST-LP)	65757FR
P/PX 300 (1ST-LP)	65758FR
P/PX 420 (1ST-LP)	65759FR
ALL (2ND-HP)	65756FR



ROTORS

MODEL(S)	PART NUMBER
P/PX 100 (1ST-LP)	65745
P/PX 200 (1ST-LP)	65749
P/PX 300 (1ST-LP)	65750
P/PX 420 (1ST-LP)	65751
ALL (2ND-HP)	65852



SHAFT SEALS

MODEL(S)	PART NUMBER
ALL (VITON)	82063



RECOMMENDED OILS

TYPE	PART NUMBER
PLUS 19 (1L/1.06QT) GENERAL PURPOSE OIL	PP19001
PLUS GOLD (1L/1.06QT) FULLY SYNTHETIC OIL	PPGOLD001
PLUS FF (1L/1.06QT) FLUSHING FLUID	PPFF001



KIT COMPONENTS

PART NUMBER	ITEM DESCRIPTION	ALL SEAL 65875	ALL MINOR 103911	P/PX100 MAJOR 103902FR	P/PX200 MAJOR 103903FR	P/PX300 MAJOR 103904FR	P/PX420 MAJOR 103905FR
71161	C-CLIP,2004/8/12/20AAC		1	1	1	1	1
52553	COUPLER,ELASTIC,2004-20A/AC		1	1	1	1	1
340024	DEVICE,ABS,VITON,BROWN,70DUROM		1	1	1	1	1
71067	KEY,SHAFT			1	1	1	1
52700	LEVER,ASB,VITON,2012/20A&AC			1	1	1	1
54340V	NIB,ASB,VITON,2004/8/12/20AAC		1				
82007	O'RING,VITON,10.77 X 2.62 MM		1	1	1	1	1
320036	O'RING,VITON,12.1 X 2.7 MM	1	1	1	1	1	1
79148	O'RING,VITON,165 X 3 MM		1	1	1	1	1
320035	O'RING,VITON,17.12 X 2.62MM		3	3	3	3	3
79509	O'RING,VITON,28 X 3 MM		1	1	1	1	1
82025	O'RING,VITON,29.3 X 3.6 MM		4	4	4	4	4
320109	O'RING,VITON,33 X 2.5 MM		1	1	1	1	1
82014	O'RING,VITON,34.1 X 3.6 MM	1	1	1	1	1	1
82004	O'RING,VITON,5.7 X 1.9 MM		3	3	3	3	3
320067	O'RING,VITON,63.09 X 3.53 MM		1	1	1	1	1
79537	O'RING,VITON,7.5 X 1.5 MM		1	1	1	1	1
40005	O'RING,VITON,9.25 X 1.78 MM		1	1	1	1	1
79513	O'RING,VITON,90 X 2 MM		4	4	4	4	4
720007	PAD,FELT,2010C2/15SD/05C1/21C2	1	1	1	1	1	1
71040	PIN,CENTERING,2004-63AAC-C		4	4	4	4	4
82604	PLUG,DRAIN,PLASTIC,2004A-2063C			3	3	3	3
250011	RING,SHOULDERED,2015SD/05C1	1		1	1	1	1
65846	RING,SHOULDERED,STANDARD			1	1		1
82063	SEAL,SHAFT,VITON	1	4	4	4	4	4
65784	SIGHT GLASS,2010/15/21CP			1	1	1	1
580031	SLEEVE,GAS,BALLAST,ALCATEL		1	1	1	1	1
65797	SPRING		1	1	1	1	1
65799	SPRING		1	1	1	1	1
52541	SPRING,VALVE		4	1	4	4	4
53040	SPRING,VANE,MW		8	4	6	8	8
390007	VALVE DISK,VITON		4	1	4	4	4
65791	VALVE,FOR PASCAL PUMP		1	1	1	1	1
65757FR	VANE,GX,1ST STAGE				2		
65758FR	VANE,GX,1ST STAGE					2	
65759FR	VANE,GX,1ST STAGE						2
65760FR	VANE,GX,1ST STAGE			2			
65756FR	VANE,GX,2ND STAGE			2	2	2	2
420029	WASHER,FLAT,STEEL,ZINC CHROMAT		2	2	2	2	2
73460	WASHER,WAVED,S.S.,M6		19	19	19	19	19
73452	WASHER,WAVED,STEEL,M4		4	4	4	4	4
73453	WASHER,WAVED,STEEL,M5		1	1	1	1	1

KITS

KIT BILL OF MATERIALS CAN BE FOUND LISTED ON THE 'KIT COMPONENTS' PAGES IMMEDIATELY FOLLOWING CORRESPONDING PUMP PAGES.

FRONT SEAL KITS

MODEL(S)	PART NUMBER
ALL	65612

MINOR KITS

MINOR KITS INCLUDE O-RINGS, GASKETS, VALVES, WASHERS, SHAFT SEALS & OTHER COMPONENTS FOR LIGHT OVERHAUL.

MODEL(S)	PART NUMBER
ALL	104975



MAJOR KITS

MAJOR KITS INCLUDE ALL COMPONENTS OF MINOR KITS PLUS VANES, SPRINGS, SIGHT GLASS, COUPLING ELEMENT & DRAIN PLUG FOR MAJOR OVERHAUL.

MODEL(S)	PART NUMBER
PC/PCX 100	104976FR
PC/PCX 200	104977FR
PC/PCX 300	104978FR
PC/PCX 420	104979FR

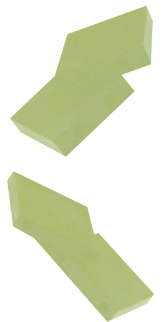


FEATURED SPARES

ALL AVAILABLE SPARES FOR THIS SERIES CAN BE FOUND LISTED ON THE 'INDIVIDUAL SPARES' PAGES AT THE END OF THIS SECTION.

VANES

MODEL(S)		PART NUMBER
PC/PCX 100	(1ST-LP)	65760FR
PC/PCX 200	(1ST-LP)	65757FR
PC/PCX 300	(1ST-LP)	65758FR
PC/PCX 420	(1ST-LP)	65759FR
ALL	(2ND-HP)	65756FR



ROTORS

MODEL(S)		PART NUMBER
PC/PCX 100	(1ST-LP)	65601
PC/PCX 200	(1ST-LP)	65801
PC/PCX 300	(1ST-L)	65802
PC/PCX 420	(1ST-LP)	65803
ALL	(2ND-HP)	102854



SHAFT SEALS

MODEL(S)		PART NUMBER
ALL	(VITON)	82063



RECOMMENDED OILS

TYPE	PART NUMBER
PLUS 19 (1L/1.06QT) GENERAL PURPOSE OIL	PP19001
PLUS GOLD (1L/1.06QT) FULLY SYNTHETIC OIL	PPGOLD001
PLUS FF (1L/1.06QT) FLUSHING FLUID	PPFF001



KIT COMPONENTS

PART NUMBER	ITEM DESCRIPTION	ALL SEAL 65612	ALL MINOR 104975	PC/PCX100 MAJOR 104976FR	PC/PCX200 MAJOR 104977FR	PC/PCX300 MAJOR 104978FR	PC/PCX420 MAJOR 104979FR
52553	COUPLER,ELASTIC,2004-20A/AC		1	1	1	1	1
340024	DEVICE,ABS,VITON,BROWN,70DUROM		1	1	1	1	1
65789	GASKET,SIGHT GLASS		1	1	1	1	1
71067	KEY,SHAFT			1	1	1	1
340023	NIB,ANTISUCK BACK,VITON		1	1	1	1	1
82007	O'RING,VITON,10.77 X 2.62 MM		1	1	1	1	1
320036	O'RING,VITON,12.1 X 2.7 MM	1	1	1	1	1	1
79148	O'RING,VITON,165 X 3 MM		1	1	1	1	1
320035	O'RING,VITON,17.12 X 2.62MM		3	3	3	3	4
79509	O'RING,VITON,28 X 3 MM		1	1	1	1	1
82025	O'RING,VITON,29.3 X 3.6 MM		4	4	4	4	4
320109	O'RING,VITON,33 X 2.5 MM		1	1	1	1	1
82014	O'RING,VITON,34.1 X 3.6 MM	1	1	1	1	1	1
40007	O'RING,VITON,34.52 X 3.53 MM		1				
82004	O'RING,VITON,5.7 X 1.9 MM		2	2	2	2	2
320067	O'RING,VITON,63.09 X 3.53 MM		1	1	1	1	1
82003	O'RING,VITON,7.2 X 1.9 MM		1	1	1	1	1
79537	O'RING,VITON,7.5 X 1.5 MM		1	1	1	1	1
40005	O'RING,VITON,9.25 X 1.78 MM		1				
79513	O'RING,VITON,90 X 2 MM		4	4	4	4	4
720007	PAD,FELT,2010C2/15SD/05C1/21C2	1	1	1	1	1	1
71040	PIN,CENTERING,2004-63AAC-C		4	4	4	4	4
82604	PLUG,DRAIN,PLASTIC,2004A-2063C			3	3	3	3
250010	RING,SHOULDERED,2010C2/2021C2	1					
250011	RING,SHOULDERED,2015SD/05C1			1	1	1	1
82063	SEAL,SHAFT,VITON	1	4	4	4	4	4
65784	SIGHT GLASS,2010/15/21CP						1
65786	SIGHT GLASS,PASCAL C			1	1	1	1
580031	SLEEVE,GAS,BALLAST,ALCATEL		1	1	1	1	1
65797	SPRING		1	1	1	1	1
65799	SPRING		1	1	1	1	1
52541	SPRING,VALVE		4	1	4	4	4
53040	SPRING,VANE,MW		8	4	6	8	8
390007	VALVE DISK,VITON		4	4	4	4	4
65757FR	VANE,GX,1ST STAGE				2		
65758FR	VANE,GX,1ST STAGE					2	
65759FR	VANE,GX,1ST STAGE						2
65760FR	VANE,GX,1ST STAGE			4			
65756FR	VANE,GX,2ND STAGE				2	2	2
230044FR	VANE,GX,OIL PUMP		1	1	1	1	1
420029	WASHER,FLAT,STEEL,ZINC CHROMAT		2	2	2	2	2
84646	WASHER,WAVED		1	1	1	1	1
73460	WASHER,WAVED,S.S.,M6		16	16	16	16	16
73452	WASHER,WAVED,STEEL,M4		4	4	4	4	4
73453	WASHER,WAVED,STEEL,M5		1	1	1	1	1

INDIVIDUAL SPARES

GASKETS

525432	GASKET,D75	D75
525433	GASKET,COVER	D75,D150
525473	GASKET,D150	D150
525682	GASKET,COVER	D25
525694	GASKET,D25	D25

HARDWARE

325017	C-CLIP	D75
325018	C-CLIP	D150
325023	C-CLIP	D25
525436	WASHER,THRUST	D75
525437	WASHER,THRUST	D75
525475	WASHER,THRUST,S/STEEL	D150
525476	WASHER,SEAL,S/STEEL	D150
525497	WASHER	D75,D150
525683	WASHER,THRUST	D25

KITS

0125717A	KIT MINOR REPAIR	M2C,M4C
0125717B	KIT MINOR REPAIR	M8C,M12C
0125717C	KIT MINOR REPAIR	M16C
619932	KIT,MINOR,REPAIR	M8C,M12C
D150A	KIT,MINOR,D150	D150
D150B	KIT,MAJOR,CAST IRON,D150	D150
D150BIT	KIT MAJOR REPAIR GX	D150
D25A	KIT,MINOR,D25	D25
D25B	KIT,MAJOR,CAST IRON,D25	D25
D25BIT	KIT MAJOR REPAIR GX	D25
D75A	KIT,MINOR,D75	D75
D75B	KIT,MAJOR,CAST IRON,D75	D75
D75BIT	KIT MAJOR REPAIR GX	D75

MISC.

245074	GROMMET	D150
525419	PIN,SPRING	D75
525420	PIN,SPRING	D150
525686	PIN,SPRING	D25
720013	PAD,FELT	D18,D28,KVC18,KVC28

O-RINGS

232095	O'RING,BUNA,7.65 X 1.63 MM	D150
--------	----------------------------	------

PLATES

525724	PLATE,VALVE,S/S	D75,D150
--------	-----------------	----------

SEALS

342003	SEAL,SHAFT,MECHANICAL,5/8"	D75
342004	SEAL,SHAFT,MECHANICAL,3/4"	D150
342005	SEAL,SHAFT,MECHANICAL,1/2"	D25
900153	SEAL,SHAFT,TEFLON,40 X 55 X 8	CALL

SHAFTS

528398	SHAFT,D25	D25
528399	SHAFT,D75	D75
528400	SHAFT,D150	D150

SIGHT GLASSES

280017	SIGHT GLASS,PUSH IN TYPE	D25,D75,D150
280027	SIGHT GLASS,THREADED TYPE	D25,D75,D150

SPRINGS

525421	SPRING,VANE,D75	D75
525422	SPRING,VANE,D150	D150
528387	SPRING,VANE, D25	D25
532112	SPRING,VALVE	D75,D150

VALVES

532784	VALVE,EXHAUST	D25
--------	---------------	-----

VANES

525418	VANE,CAST IRON	D75
525418G	VANE GX	D75
525471	VANE,CAST IRON	D150



INDIVIDUAL SPARES

VANES (CONT.)

525471G	VANE GX	D150
535797	VANE,CAST IRON	D25
535797G	VANE GX	D25