

### KITS

KIT BILL OF MATERIALS CAN BE FOUND LISTED ON THE 'KIT COMPONENTS' PAGES IMMEDIATELY FOLLOWING CORRESPONDING PUMP PAGES.

#### SEAL & GASKET KITS

SEAL & GASKET KITS INCLUDE MECHANICAL SHAFT SEAL(S), O-RINGS, CLAPPER OR POPPET VALVES, GASKETS, SIGHT GLASS & OTHER COMPONENTS FOR LIGHT OVERHAUL.

| MODEL(S) |                 | PART NUMBER |
|----------|-----------------|-------------|
| 212 H-11 | (CLAPPER VALVE) | 4296389K    |
| 412 H-11 | (CLAPPER VALVE) | 42963812K   |
| 212 H-11 | (POPPET VALVE)  | 4296389KP   |
| 412 H-11 | (POPPET VALVE)  | 42963812KP  |

#### REPAIR KITS

REPAIR KITS INCLUDE ALL COMPONENTS OF SEAL & GASKET KITS PLUS V-BELTS, SOLENOID COIL, BEARINGS (AS NOTED) & OTHER COMPONENTS.

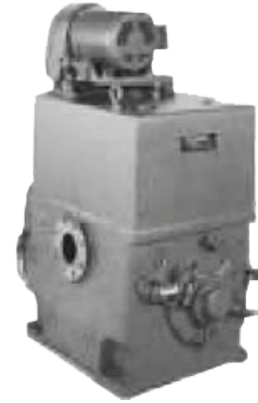
| MODEL(S) |                      | PART NUMBER |
|----------|----------------------|-------------|
| 212 H-11 | (CLAPPER VALVE)      | 4296389     |
| 212 H-11 | (CLAPPER W/BEARINGS) | 4296389B    |
| 412 H-11 | (CLAPPER VALVE)      | 42963812    |
| 412 H-11 | (CLAPPER W/BEARINGS) | 42963812B   |
| 212 H-11 | (POPPET VALVE)       | 4296389P    |
| 212 H-11 | (POPPET W/BEARINGS)  | 4296389BP   |
| 412 H-11 | (POPPET VALVE)       | 42963812P   |
| 412 H-11 | (POPPET W/BEARINGS)  | 42963812BP  |



#### BLOCK REBORE PACKAGES

BLOCK REBORE PACKAGES INCLUDE NEW HINGE BARS & SPACER. OVER-BORING OF HINGE BAR BORE. AVAILABLE IN NORTH AMERICA ONLY. ALL ITEMS SHIPPED TO PRECISION PLUS MUST BE STRIPPED & CLEANED. CONTAMINATED ITEMS WILL NOT BE ACCEPTED & WILL BE RETURNED AT CUSTOMER'S EXPENSE.

| MODEL(S) | PART NUMBER |
|----------|-------------|
| 212 H-11 | 21211REBORE |
| 412 H-11 | 41211REBORE |

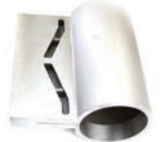


### FEATURED SPARES

ALL AVAILABLE SPARES FOR THIS SERIES CAN BE FOUND LISTED ON THE 'INDIVIDUAL SPARES' PAGES AT THE END OF THIS SECTION.

#### PISTON SLIDES

| MODEL(S) | PART NUMBER |
|----------|-------------|
| ALL      | 243595011   |



#### HINGE BARS

| MODEL(S)            | PART NUMBER |
|---------------------|-------------|
| ALL (STANDARD SIZE) | 297857004   |
| ALL (1/32 OVERSIZE) | 297857006   |
| ALL (1/16 OVERSIZE) | 297857007   |
| ALL (1/8 OVERSIZE)  | 297857012   |



#### HINGE BAR SPACERS

| MODEL(S)                 | PART NUMBER |
|--------------------------|-------------|
| 412 H-11 (STANDARD SIZE) | 268788001   |
| 412 H-11 (1/32 OVERSIZE) | 268788002   |
| 412 H-11 (1/16 OVERSIZE) | 268788003   |
| 412 H-11 (1/8 OVERSIZE)  | 268788007   |



#### ECCENTRICS (CAMS)

| MODEL(S)     | PART NUMBER |
|--------------|-------------|
| ALL (HOLLOW) | 278575001   |
| ALL (SOLID)  | 252459001   |



#### SHAFTS

| MODEL(S) | PART NUMBER |
|----------|-------------|
| 212 H-11 | 252616012   |
| 412 H-11 | 262992005   |



#### SHAFT SEALS

| MODEL(S)   | PART NUMBER |
|------------|-------------|
| ALL (MECH) | 085029600   |
| ALL (LIP)  | 427121002   |



#### VALVE ASSEMBLIES

| MODEL(S)        | PART NUMBER |
|-----------------|-------------|
| ALL (STAINLESS) | 263840004   |
| ALL (ZYTEL)     | 263840006   |
| ALL (POPPET J)  | 607417001   |



### KIT COMPONENTS

| PART NUMBER | ITEM DESCRIPTION                  | 212H-11                 | 212H-11                 | 212H-11                  | 212H-11                  | 212H-11                      | 212H-11                       |
|-------------|-----------------------------------|-------------------------|-------------------------|--------------------------|--------------------------|------------------------------|-------------------------------|
|             |                                   | SEAL (CLAP)<br>4296389K | SEAL (POP)<br>4296389KP | REPAIR (CLAP)<br>4296389 | REPAIR (POP)<br>4296389P | REPAIR /BRGS (C)<br>4296389B | REPAIR /BRGS (P)<br>4296389BP |
| 085-044-345 | BALL BEARING 50MM X 90MM X 30.2MM |                         |                         |                          |                          | 2                            | 2                             |
| 276-781-002 | CLAPPER VALVE ZYTEL               | 4                       |                         | 4                        |                          | 4                            |                               |
| 085-034-799 | DOME PYREX WITH GLASS DOME GASKET | 1                       | 1                       | 1                        | 1                        | 1                            | 1                             |
| 264127001   | GASKET,COVER,RESERVOIR            | 1                       | 1                       | 1                        | 1                        | 2                            | 2                             |
| 246765002   | GASKET,HOUSING,212H-10/ 212H-11   | 1                       | 1                       | 1                        | 1                        | 1                            | 1                             |
| 085038817   | GASKET,OIL INDICATOR,BUNA         | 1                       | 1                       | 1                        | 1                        | 1                            | 1                             |
| 085038818   | GASKET,OIL INDICATOR,VITOND       | 1                       | 1                       | 1                        | 1                        | 1                            | 1                             |
| 246763002   | GASKET,PLATE,VALVE COVER          | 1                       | 1                       | 1                        | 1                        | 1                            | 1                             |
| 243926002   | GASKET,VALVE PLATE                | 2                       | 2                       | 2                        | 2                        | 2                            | 2                             |
| 607-416-001 | INSERT, VALVE CAP 148 212 412     |                         | 4                       |                          | 4                        |                              | 4                             |
| 085-024-135 | KIT O RING FOR CHECK VALVE        | 1                       | 1                       | 1                        | 1                        | 1                            | 1                             |
| 085-036-101 | LEVEL SIGHT GAUGE 2" OD           | 1                       | 1                       | 1                        | 1                        | 1                            | 1                             |
| 085019755   | O'RING,BUNA,125.8 X 3.53MM        | 2                       | 2                       | 2                        | 2                        | 2                            | 2                             |
| 085-029-600 | ROTARY OIL SEAL 212/412J          | 2                       | 2                       | 2                        | 2                        | 2                            | 2                             |
| 085-030-950 | SOLENOID COIL 220/240V 50/60HZ    |                         |                         | 1                        | 1                        | 1                            | 1                             |
| 274-172-001 | SPRING VALVE                      | 4                       |                         | 4                        |                          | 4                            |                               |
| 085024138   | SPRING,CHECK VALVE,S/S            | 1                       | 1                       | 1                        | 1                        | 1                            | 1                             |
| 085013669   | V-BELT,SINGLE,212H-11             |                         |                         | 3                        | 3                        | 3                            | 3                             |
| 607-415-001 | VALVE POPPET 148 212 412          |                         | 4                       |                          | 4                        |                              | 4                             |
| 085-052-306 | VALVE SPRING 148 212 412          |                         | 4                       |                          | 4                        |                              | 4                             |

| PART NUMBER | ITEM DESCRIPTION                       | 412H-11                  | 412H-11                  | 412H-11                   | 412H-11                   | 412H-11                       | 412H-11                        |
|-------------|--|--------------------------|--------------------------|---------------------------|---------------------------|-------------------------------|--------------------------------|
|             |  | SEAL (CLAP)<br>42963812K | SEAL (POP)<br>42963812KP | REPAIR (CLAP)<br>42963812 | REPAIR (POP)<br>42963812P | REPAIR /BRGS (C)<br>42963812B | REPAIR /BRGS (P)<br>42963812BP |
| 085-044-345 | BALL BEARING 50MM X 90MM X 30.2MM      |                          |                          |                           |                           | 2                             | 2                              |
| 085013726   | BELT,"V",SET OF 4                      |                          |                          | 1                         | 1                         | 1                             | 1                              |
| 276-781-002 | CLAPPER VALVE ZYTEL                    | 8                        |                          | 8                         |                           | 8                             |                                |
| 269043001   | GASKET,HOUSING,412H-11                 | 1                        | 1                        | 1                         | 1                         | 1                             | 1                              |
| 269037001   | GASKET,OIL SEPARATOR                   | 1                        | 1                        | 1                         | 1                         | 1                             | 1                              |
| 243926002   | GASKET,VALVE PLATE                     | 4                        | 4                        | 4                         | 4                         | 4                             | 4                              |
| 085034530   | INDICATOR,OIL FLOW,412H-11             | 1                        | 1                        | 1                         | 1                         | 1                             | 1                              |
| 607-416-001 | INSERT, VALVE CAP 148 212 412          |                          | 8                        |                           | 8                         |                               | 8                              |
| 085-024-135 | KIT O RING FOR CHECK VALVE             | 2                        | 2                        | 2                         | 2                         | 2                             | 2                              |
| 085-036-101 | LEVEL SIGHT GAUGE 2" OD                | 1                        | 1                        | 1                         | 1                         | 1                             | 1                              |
| 085019755   | O'RING,BUNA,125.8 X 3.53MM             | 2                        | 2                        | 2                         | 2                         | 2                             | 2                              |
| 248-411-011 | OIL RESERVOIR COVER GASKET             | 1                        | 1                        | 1                         | 1                         | 1                             | 1                              |
| 085-033-232 | ROLLER BEARING 2.1654" ID X 3.9370" OD |                          |                          |                           |                           | 1                             | 1                              |
| 085-029-600 | ROTARY OIL SEAL 212/412J               | 1                        | 1                        | 1                         | 1                         | 1                             | 1                              |
| 085-029-430 | SOLENOID COIL 220/440V 50/60HZ 12W     |                          |                          | 1                         | 1                         | 1                             | 1                              |
| 274-172-001 | SPRING VALVE                           | 8                        |                          | 8                         |                           | 8                             |                                |
| 085024138   | SPRING,CHECK VALVE,S/S                 | 2                        | 2                        | 2                         | 2                         | 2                             | 2                              |
| 607-415-001 | VALVE POPPET 148 212 412               |                          | 8                        |                           | 8                         |                               | 8                              |
| 085-052-306 | VALVE SPRING 148 212 412               |                          | 8                        |                           | 8                         |                               | 8                              |

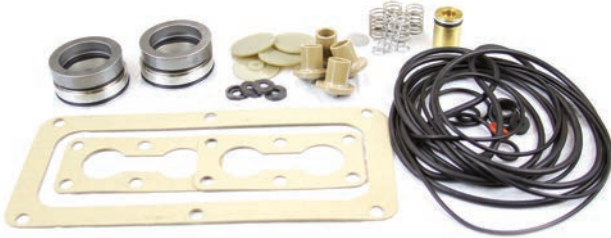
### KITS

KIT BILL OF MATERIALS CAN BE FOUND LISTED ON THE 'KIT COMPONENTS' PAGES IMMEDIATELY FOLLOWING CORRESPONDING PUMP PAGES.

#### SEAL & GASKET KITS

SEAL & GASKET KITS INCLUDE POPPET VALVES, GASKETS, O-RINGS, MECHANICAL SHAFT SEALS & OTHER COMPONENTS FOR LIGHT OVERHAUL.

| MODEL(S) | PART NUMBER |
|----------|-------------|
| 212 J    | 429638016   |
| 412 J    | 429638015   |



#### REPAIR KITS

REPAIR KITS INCLUDE ALL COMPONENTS OF SEAL & GASKET KITS PLUS V-BELTS, SOLENOID COIL, BEARINGS (AS NOTED) & OTHER COMPONENTS.

| MODEL(S)           | PART NUMBER  |
|--------------------|--------------|
| 212 J              | 429638016RK  |
| 212 J (W/BEARINGS) | 429638016RKB |
| 412 J              | 429638015RK  |
| 412 J (W/BEARINGS) | 429638015RKB |



#### BLOCK REBORE PACKAGES

BLOCK REBORE PACKAGES INCLUDE NEW HINGE BAR & SPACER. OVER-BORING OF HINGE BAR BORE AREA. AVAILABLE IN NORTH AMERICA ONLY ALL ITEMS SHIPPED TO PRECISION PLUS MUST BE STRIPPED & CLEANED. CONTAMINATED ITEMS WILL NOT BE ACCEPTED & WILL BE RETURNED AT CUSTOMER'S EXPENSE.

| MODEL(S) | PART NUMBER |
|----------|-------------|
| 212 J    | 21211REBORE |
| 412 J    | 41211REBORE |

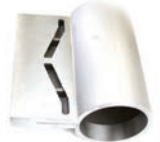


### FEATURED SPARES

ALL AVAILABLE SPARES FOR THIS SERIES CAN BE FOUND LISTED ON THE 'INDIVIDUAL SPARES' PAGES AT THE END OF THIS SECTION.

#### PISTON SLIDES

| MODEL(S) | PART NUMBER |
|----------|-------------|
| ALL      | 243595011   |



#### HINGE BARS

| MODEL(S)            | PART NUMBER |
|---------------------|-------------|
| ALL (STANDARD SIZE) | 297857004   |
| ALL (1/32 OVERSIZE) | 297857006   |
| ALL (1/16 OVERSIZE) | 297857007   |
| ALL (1/8 OVERSIZE)  | 297857012   |



#### HINGE BAR SPACERS

| MODEL(S)              | PART NUMBER |
|-----------------------|-------------|
| 412 J (STANDARD SIZE) | 268788001   |
| 412 J (1/32 OVERSIZE) | 268788002   |
| 412 J (1/16 OVERSIZE) | 268788003   |
| 412 J (1/8 OVERSIZE)  | 268788007   |



#### ECCENTRICS (CAMS)

| MODEL(S)     | PART NUMBER |
|--------------|-------------|
| ALL (HOLLOW) | 278575001   |
| ALL (SOLID)  | 252459001   |



#### SHAFTS

| MODEL(S) | PART NUMBER |
|----------|-------------|
| 212 J    | 252616012   |
| 412 J    | 262992005   |



#### SHAFT SEALS

| MODEL(S)   | PART NUMBER |
|------------|-------------|
| ALL (MECH) | 085029600   |



#### VALVE ASSEMBLIES

| MODEL(S) | PART NUMBER |
|----------|-------------|
| ALL      | 607417001   |



#### RECOMMENDED OILS

| TYPE                                   | PART NUMBER |
|--|-------------|
| PLUS 77 (20L/5.28GAL)                  | PP77020     |
| GENERAL PURPOSE OIL (EQU. TO V-LUBE B) |             |

### KIT COMPONENTS

| PART NUMBER | ITEM DESCRIPTION                      | 212J                     | 212J                  | 212J                          | 412J                     | 412J                  | 412J                              |
|-------------|---------------------------------------|--------------------------|-----------------------|-------------------------------|--------------------------|-----------------------|-----------------------------------|
|             |                                       | SEAL/GASKET<br>429638016 | REPAIR<br>429638016RK | REPAIR W/BRGS<br>429638016RKB | SEAL/GASKET<br>429638015 | REPAIR<br>429638015RK | REPAIR KIT W/BRGS<br>429638015RKB |
| 085-019-757 | BALL BEARING                          |                          |                       | 2                             |                          |                       | 2                                 |
| 269-037-001 | GASKET OIL SEPARATOR                  |                          |                       |                               | 1                        | 1                     | 1                                 |
| 243-926-002 | GASKET VALVE PLATE                    | 2                        | 2                     | 2                             | 4                        | 4                     | 4                                 |
| 607-416-001 | INSERT, VALVE CAP 148 212 412         | 4                        | 4                     | 4                             | 8                        | 8                     | 8                                 |
| 085-050-116 | O RING 1 3/4" ID X .139" SECTION      | 1                        | 2                     | 2                             | 2                        | 2                     | 2                                 |
| 085-050-115 | O RING 1/2 ID X .139 W -206           | 1                        | 1                     | 1                             | 2                        | 2                     | 2                                 |
| 085-050-117 | O RING 13 1/2" ID X .139" SECTION     | 2                        | 2                     | 2                             | 2                        | 2                     | 2                                 |
| 085-050-737 | O RING 15.375" X .210" SECTION        | 1                        | 1                     | 1                             |                          |                       |                                   |
| 085-050-192 | O RING 15/16 ID X .139W -213          | 1                        | 1                     | 1                             | 2                        | 2                     | 2                                 |
| 085-050-761 | O RING 18" ID X .210" SECTION         | 1                        | 1                     | 1                             |                          |                       |                                   |
| 085-050-118 | O RING 23" ID X .210" SECTION         |                          |                       |                               | 1                        | 1                     | 1                                 |
| 085-050-119 | O RING 28 1/4" ID X .210" SECTION     |                          |                       |                               | 1                        | 1                     | 1                                 |
| 085-019-755 | O RING 4 7/8" ID X 5 1/8" OD X .139   | 2                        | 2                     | 2                             | 2                        | 2                     | 2                                 |
| 085-041-609 | O RING 5/8" ID X .139" SECTION VITON½ | 4                        | 4                     | 4                             | 4                        | 4                     | 4                                 |
| 085-033-232 | ROLLER BEARING 2.1654" ID X 3.9370" O |                          |                       |                               |                          |                       | 1                                 |
| 085-029-600 | ROTARY OIL SEAL 212/412J              | 2                        | 2                     | 2                             | 1                        | 1                     | 1                                 |
| 085-050-128 | SCREEN WIRE MESH 24 X 24 .014         | 1                        | 1                     | 1                             | 2                        | 2                     | 2                                 |
| 085-050-120 | SEAL 1/4 ID X 5/8 OD X 3/16 TK        | 1                        | 1                     | 1                             | 2                        | 2                     | 2                                 |
| 085-029-430 | SOLENOID COIL 220/440V 50/60HZ 12W    |                          | 1                     | 1                             |                          | 1                     | 1                                 |
| 274-172-001 | SPRING VALVE                          | 4                        | 4                     | 4                             | 8                        | 8                     | 8                                 |
| 085-013-669 | V BELT A SECTION 91.3"PL SET OF 3     |                          | 1                     | 1                             |                          |                       |                                   |
| 085-050-126 | V BELT B SECTION SET OF 3             |                          |                       |                               |                          | 1                     | 1                                 |
| 085-050-122 | VALVE CHK CRTG BRS BODY 1"D X         | 1                        | 1                     | 1                             | 2                        | 2                     | 2                                 |
| 246-763-002 | VALVE COVER PLATE GASKET              | 1                        | 1                     | 1                             |                          |                       |                                   |
| 607-415-001 | VALVE POPPET 148 212 412              | 4                        | 4                     | 4                             | 8                        | 8                     | 8                                 |
| 085-052-306 | VALVE SPRING 148 212 412              |                          | 4                     | 4                             | 8                        | 8                     | 8                                 |



### KITS

KIT BILL OF MATERIALS CAN BE FOUND LISTED ON THE 'KIT COMPONENTS' PAGES IMMEDIATELY FOLLOWING CORRESPONDING PUMP PAGES.

#### SEAL & GASKET KITS

SEAL & GASKET KITS INCLUDE SHAFT SEAL KITS, O-RINGS, CLAPPER VALVES, GASKETS, SIGHT GLASSES & OTHER COMPONENTS FOR LIGHT OVERHAUL.

| MODEL(S) | PART NUMBER |
|----------|-------------|
| 212 H-10 | 4296388K    |
| 412 H-10 | 42963811K   |



#### REPAIR KITS

REPAIR KITS INCLUDE ALL COMPONENTS OF SEAL & GASKET KITS PLUS V-BELTS, SOLENOID COIL & OTHER COMPONENTS.

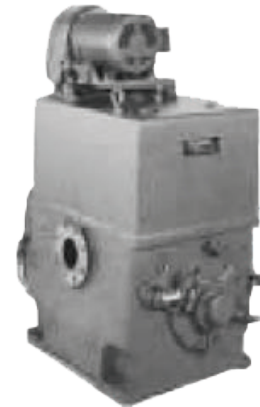
| MODEL(S) | PART NUMBER |
|----------|-------------|
| 212 H-10 | 4296388     |
| 412 H-10 | 42963811    |



#### BLOCK REBORE PACKAGES

BLOCK REBORE PACKAGES INCLUDE NEW HINGE BAR & SPACER. OVER-BORING OF HINGE BAR BORE AREA. AVAILABLE IN NORTH AMERICA ONLY. ALL ITEMS SHIPPED TO PRECISION PLUS MUST BE STRIPPED & CLEANED. CONTAMINATED ITEMS WILL NOT BE ACCEPTED & WILL BE RETURNED AT CUSTOMER'S EXPENSE.

| MODEL(S) | PART NUMBER |
|----------|-------------|
| 212 H-10 | 21210REBORE |
| 412 H-10 | 41210REBORE |



### FEATURED SPARES

ALL AVAILABLE SPARES FOR THIS SERIES CAN BE FOUND LISTED ON THE 'INDIVIDUAL SPARES' PAGES AT THE END OF THIS SECTION.

#### PISTON SLIDES

| MODEL(S) | PART NUMBER |
|----------|-------------|
| ALL      | 243595011   |



#### HINGE BARS

| MODEL(S)            | PART NUMBER |
|---------------------|-------------|
| ALL (STANDARD SIZE) | 297857004   |
| ALL (1/32 OVERSIZE) | 297857006   |
| ALL (1/16 OVERSIZE) | 297857007   |



#### HINGE BAR SPACERS

| MODEL(S)                 | PART NUMBER |
|--------------------------|-------------|
| 412 H-10 (STANDARD SIZE) | 248407004   |
| 412 H-10 (1/32 OVERSIZE) | 248407005   |
| 412 H-10 (1/16 OVERSIZE) | 248407006   |



#### ECCENTRICS (CAMs)

| MODEL(S)     | PART NUMBER |
|--------------|-------------|
| ALL (HOLLOW) | 278575001   |
| ALL (SOLID)  | 252459001   |

#### SHAFT SEALS

| MODEL(S) | PART NUMBER |
|----------|-------------|
| ALL      | 085018189   |

#### VALVE ASSEMBLIES

| MODEL(S)          | PART NUMBER |
|-------------------|-------------|
| ALL (STAINLESS H) | 263840004   |
| ALL (ZYTEL H)     | 263840006   |



#### RECOMMENDED OILS

| TYPE                                   | PART NUMBER |
|--|-------------|
| PLUS 77 (20L/5.28GAL)                  | PP77020     |
| GENERAL PURPOSE OIL (EQU. TO V-LUBE B) |             |

### KIT COMPONENTS

| PART NUMBER | ITEM DESCRIPTION                   | 212H-10                 | 212H-10           | 412H-10                  | 412H-10            |
|-------------|------------------------------------|-------------------------|-------------------|--------------------------|--------------------|
|             |                                    | SEAL/GASKET<br>4296388K | REPAIR<br>4296388 | SEAL/GASKET<br>42963811K | REPAIR<br>42963811 |
| 085013726   | BELT,"V",SET OF 4                  |                         |                   |                          | 1                  |
| 276-781-002 | CLAPPER VALVE ZYTEL                | 4                       | 4                 | 8                        | 8                  |
| 085-039-008 | COMPOUND PRIMER N .02 FL OZ        | 4                       | 4                 | 2                        | 2                  |
| 085-039-009 | COMPOUND RETAINING .5ML            | 2                       | 2                 | 1                        | 1                  |
| 246764002   | GASKET,COVER PLATE,212H-10         | 1                       | 1                 |                          |                    |
| 248413002   | GASKET,HOUSING                     |                         |                   | 1                        | 1                  |
| 246765002   | GASKET,HOUSING,212H-10/ 212H-11    | 1                       | 1                 |                          |                    |
| 248409002   | GASKET,OIL SEPARATOR               |                         |                   | 1                        | 1                  |
| 2661351     | GASKET,OIL SEPARATOR               | 1                       | 1                 |                          |                    |
| 243926002   | GASKET,VALVE PLATE                 | 2                       | 2                 | 4                        | 4                  |
| 085-024-135 | KIT O RING FOR CHECK VALVE         | 1                       | 1                 | 2                        | 2                  |
| 085010163   | O'RING,VITON,2-7/8 ID X 1/8"       | 2                       | 2                 | 1                        | 1                  |
| 248-411-011 | OIL RESERVOIR COVER GASKET         |                         |                   | 1                        | 1                  |
| 08518189SS  | SEAL,SHAFT,212/412H-10             | 2                       | 2                 | 1                        | 1                  |
| 52114       | SIGHT GLASS,OIL LEVEL              | 1                       | 1                 | 1                        | 1                  |
| 085-030-950 | SOLENOID COIL 220/240V 50/60HZ     |                         | 1                 |                          |                    |
| 085-029-430 | SOLENOID COIL 220/440V 50/60HZ 12W |                         |                   |                          | 1                  |
| 274-172-001 | SPRING VALVE                       | 4                       | 4                 | 8                        | 8                  |
| 085024138   | SPRING,CHECK VALVE,S/S             | 1                       | 1                 | 2                        | 2                  |
| 085013669   | V-BELT,SINGLE,212H-11              |                         | 3                 |                          |                    |

### KITS

KIT BILL OF MATERIALS CAN BE FOUND LISTED ON THE 'KIT COMPONENTS' PAGES IMMEDIATELY FOLLOWING CORRESPONDING PUMP PAGES.

#### SHAFT SEAL KITS

| MODEL(S) | PART NUMBER |
|----------|-------------|
| 148 H-10 | 085018194   |
| 149 H-11 | 085029599   |



#### SEAL & GASKET KITS

SEAL & GASKET KITS INCLUDE ALL COMPONENTS OF SHAFT SEAL KITS PLUS O-RINGS, CLAPPER VALVES, GASKETS, SIGHT GLASSES & OTHER COMPONENTS FOR LIGHT OVERHAUL.

| MODEL(S) | PART NUMBER |
|----------|-------------|
| 148 H-10 | 4296384K    |
| 149 H-11 | 4296386K    |



#### REPAIR KITS

REPAIR KITS INCLUDE ALL COMPONENTS OF SEAL & GASKET KITS, PLUS V-BELTS, SOLENOID COIL, BEARINGS (AS NOTED) & OTHER COMPONENTS.

| MODEL(S)              | PART NUMBER |
|-----------------------|-------------|
| 148 H-10              | 4296384     |
| 148 H-10 (W/BEARINGS) | 4296384B    |
| 149 H-11              | 4296386     |
| 149 H-11 (W/BEARINGS) | 4296386B    |



### FEATURED SPARES

ALL AVAILABLE SPARES FOR THIS SERIES CAN BE FOUND LISTED ON THE 'INDIVIDUAL SPARES' PAGES AT THE END OF THIS SECTION.

#### HINGE BARS

| MODEL(S)            | PART NUMBER |
|---------------------|-------------|
| 148 H-10 (STANDARD) | 254688007   |
| 148 H-10 (1/32)     | 254688008   |
| 148 H-10 (1/16)     | 254688009   |
| 149 H-11 (STANDARD) | 247389013   |
| 149 H-11 (1/32)     | 247389004   |
| 149 H-11 (1/16)     | 247389005   |



#### ECCENTRICS (CAMS)

| MODEL(S) | PART NUMBER |
|----------|-------------|
| 148 H-10 | 254-612-005 |
| 149 H-11 | 247-394-008 |



#### PISTON & SLIDES

| MODEL(S) | PART NUMBER |
|----------|-------------|
| 148 H-10 | 254-609-001 |
| 149 H-11 | 247-392-005 |



#### SOLENOID VALVES (INCLUDES COIL)

| MODEL(S) | PART NUMBER |
|----------|-------------|
| 149 H-11 | U30011271   |



#### FLOW INDICATORS

| MODEL(S) | PART NUMBER |
|----------|-------------|
| ALL      | 085034799   |



#### BEARINGS

| MODEL(S) | PART NUMBER |
|----------|-------------|
| 148 H-10 | 085016211   |
| 149 H-11 | 085019247   |



#### CLAPPER VALVES

| MODEL(S)        | PART NUMBER |
|-----------------|-------------|
| ALL (PLASTIC)   | 276781002   |
| ALL (STAINLESS) | 272963002   |



#### RECOMMENDED OILS

| TYPE                                   | PART NUMBER |
|--|-------------|
| PLUS 77 (20L/5.28GAL)                  | PP77020     |
| GENERAL PURPOSE OIL (EQU. TO V-LUBE B) |             |



### KIT COMPONENTS

| PART NUMBER | ITEM DESCRIPTION                  | 148H-10                 | 148H-10              | 148H-10           | 148H-10                   | 149H-11                 | 149H-11              | 149H-11           | 149H-11                   |
|-------------|-----------------------------------|-------------------------|----------------------|-------------------|---------------------------|-------------------------|----------------------|-------------------|---------------------------|
|             |                                   | SHAFT SEAL<br>085018194 | SEAL/GSK<br>4296384K | REPAIR<br>4296384 | REPAIR W/BRGS<br>4296384B | SHAFT SEAL<br>085029599 | SEAL/GSK<br>4296386K | REPAIR<br>4296386 | REPAIR W/BRGS<br>4296386B |
| 085-019-247 | BALL BEARING 35MM ID X 72MM OD    |                         |                      |                   |                           |                         |                      |                   | 2                         |
| 085016211   | BEARING,ROLLER,45MM               |                         |                      |                   | 2                         |                         |                      |                   |                           |
| 085015088   | BELT,"V",.63" LONG                |                         |                      | 1                 | 1                         |                         |                      |                   |                           |
| 276-781-002 | CLAPPER VALVE ZYTEL               |                         | 2                    | 2                 | 2                         |                         | 3                    | 3                 | 3                         |
| 085-039-008 | COMPOUND PRIMER N .02 FL OZ       | 2                       | 4                    | 4                 | 4                         |                         |                      |                   |                           |
| 085-039-009 | COMPOUND RETAINING .5ML           | 1                       | 2                    | 2                 | 2                         |                         |                      |                   |                           |
| 085-034-799 | DOME PYREX WITH GLASS DOME GASKET |                         |                      | 1                 | 1                         |                         | 1                    | 1                 | 1                         |
| 257654001   | GASKET,148H-10                    |                         | 1                    | 1                 | 1                         |                         |                      |                   |                           |
| 257663001   | GASKET,148H-10                    |                         | 1                    | 1                 | 1                         |                         |                      |                   |                           |
| 247404003   | GASKET,149H-11                    |                         |                      |                   |                           |                         | 1                    | 1                 | 1                         |
| 264127001   | GASKET,COVER,RESERVOIR            |                         |                      |                   |                           |                         | 1                    | 1                 | 1                         |
| 263475001   | GASKET,HOUSING                    |                         |                      |                   |                           |                         | 1                    | 1                 | 1                         |
| 085038817   | GASKET,OIL INDICATOR,BUNA         |                         | 1                    | 1                 | 1                         |                         |                      | 1                 | 1                         |
| 085038818   | GASKET,OIL INDICATOR,VITOND       |                         | 1                    | 1                 | 1                         |                         |                      | 1                 | 1                         |
| 247381002   | GASKET,OIL SEPARATOR              |                         |                      |                   |                           |                         | 1                    | 1                 | 1                         |
| 243926002   | GASKET,VALVE PLATE                |                         | 1                    | 1                 | 1                         |                         |                      |                   |                           |
| 085-036-101 | LEVEL SIGHT GAUGE 2" OD           |                         | 1                    | 1                 | 1                         |                         | 1                    | 1                 | 1                         |
| 085014704   | O'RING,BUNA,101.19 X 3.53MM       |                         |                      |                   |                           |                         | 2                    | 2                 | 2                         |
| 085010102   | O'RING,BUNA,85.32 X 3.53 MM       |                         | 2                    | 2                 | 2                         |                         |                      |                   |                           |
| 085024131   | O'RING,VITON,12.37 X 2.62MMNG     |                         | 1                    | 1                 | 1                         |                         | 1                    | 1                 | 1                         |
| 085024132   | O'RING,VITON,15.54 X 2.62MMNG     |                         | 1                    | 1                 | 1                         |                         | 1                    | 1                 | 1                         |
| 085-024-133 | REPLACEMENT PT.-BACK UP RING      |                         | 1                    | 1                 | 1                         |                         | 1                    | 1                 | 1                         |
| 085-029-599 | ROTARY OIL SEAL 149 PUMP          |                         |                      |                   |                           | 1                       | 2                    | 2                 | 2                         |
| 08518194SS  | SEAL,SHAFT,148H-10                | 1                       | 2                    | 2                 | 2                         |                         |                      |                   |                           |
| 085-030-950 | SOLENOID COIL 220/240V 50/60HZ    |                         |                      | 1                 | 1                         |                         |                      | 1                 | 1                         |
| 274-172-001 | SPRING VALVE                      |                         | 2                    | 2                 | 2                         |                         | 3                    | 3                 | 3                         |
| 085024134   | SPRING,FOR #230B-2PP-2PP          |                         | 1                    | 1                 | 1                         |                         | 1                    | 1                 | 1                         |
| 085-013-615 | V BELT A SECTION 76.3"PL SET OF 3 |                         |                      |                   |                           |                         |                      | 1                 | 1                         |



### KITS

KIT BILL OF MATERIALS CAN BE FOUND LISTED ON THE 'KIT COMPONENTS' PAGES IMMEDIATELY FOLLOWING CORRESPONDING PUMP PAGES.

#### SEAL KITS

SEAL KITS INCLUDE SHAFT SEALS, SHAFT SLEEVE, PRIMER & RETAINING COMPOUND.

| MODEL(S) | PART NUMBER |
|----------|-------------|
| 306/310  | 4240891     |

#### SHIM KITS

SHIM KITS INCLUDE (4) EACH OF A VARIETY OF SHIMS RANGING FROM 0.002" TO 0.062".

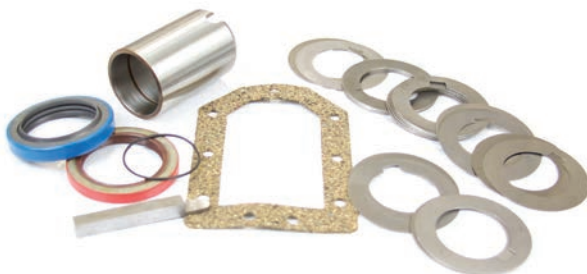
| MODEL(S)    | PART NUMBER |
|-------------|-------------|
| 607/615/622 | 424097001   |



#### BOOSTER REPAIR KITS

BOOSTER REPAIR KITS INCLUDE SHIMS, SHAFT SEALS, COVER GASKETS & OTHER COMPONENTS REQUIRED FOR BOOSTER REPAIR. KITS ARE OFFERED IN CLOCKWISE OR COUNTER-CLOCKWISE ROTATION, WITH OR WITHOUT BEARINGS (AS NOTED).

| MODEL(S) |                     | PART NUMBER  |
|----------|---------------------|--------------|
| 306/310  |                     | 424094001    |
| 607      | (CW)                | 424096003CW  |
| 607      | (CCW)               | 424096003CCW |
| 615/622  | (CW)                | 424096002CW  |
| 615/622  | (CCW)               | 424096002CCW |
| 615/622  | (CW / NO BEARINGS)  | 615CWNB      |
| 615/622  | (CCW / NO BEARINGS) | 615CCWNB     |



### FEATURED SPARES

ALL AVAILABLE SPARES FOR THIS SERIES CAN BE FOUND LISTED ON THE 'INDIVIDUAL SPARES' PAGES AT THE END OF THIS SECTION.

#### BEARINGS

| MODEL(S)    | PART NUMBER |
|-------------|-------------|
| 306/310     | 085037645   |
| 306/310     | 085037646   |
| 607/615/622 | 085044345   |



#### SHAFT SEALS

| MODEL(S) |              | PART NUMBER |
|----------|--------------|-------------|
| 306/310  | (CCW-BLUE)   | 085040198   |
| 615/622  | (RADIAL LIP) | 085040707   |
| 615/622  | (CW-RED)     | 085043463   |
| 615/622  | (CCW-BLUE)   | 085043469   |



#### SHAFT SLEEVES

| MODEL(S) | PART NUMBER |
|----------|-------------|
| 306/310  | 429296005   |
| 607      | 430726008   |
| 615/622  | 430726002   |



### KIT COMPONENTS

| PART NUMBER | ITEM DESCRIPTION                   | 306,310 SEAL 4240891 | 306,310 BOOSTER 424094001 | 607,615,622 SHIM 424097001 | 607 BOOSTER 424096003CW | 607 BOOSTER 424096003CCW |
|-------------|------------------------------------|----------------------|---------------------------|----------------------------|-------------------------|--------------------------|
| 085-044-345 | BALL BEARING 50MM X 90MM X 30.2MM  |                      |                           |                            | 4                       | 4                        |
| 085-037-646 | BALL BEARING DOUBLE ROW 1.1811" ID |                      | 3                         |                            |                         |                          |
| 085-037-645 | BALL BEARING SINGLE ROW            |                      | 1                         |                            |                         |                          |
| 085-039-008 | COMPOUND PRIMER N .02 FL OZ        | 1                    | 2                         |                            |                         |                          |
| 085-039-009 | COMPOUND RETAINING .5ML            | 1                    | 1                         |                            |                         |                          |
| 085-040-199 | O RING 1 1/8" ID X .070" SECTION   |                      | 1                         |                            |                         |                          |
| 085-040-011 | O RING 1 3/4" ID X .070" SECTION   |                      |                           |                            | 1                       | 1                        |
| 022-002-240 | O RING 2-1/8 ID X 2-3/8 OD         |                      | 1                         |                            |                         |                          |
| 085-038-990 | O RING 4-3/8" ID X .103" SECTION   |                      | 1                         |                            |                         |                          |
| 085038990   | O'RING,BUNA,111.1 X 2.62MM         | 1                    |                           |                            |                         |                          |
| 085040199   | O'RING,VITON,28.6 X 1.78MM         | 1                    |                           |                            |                         |                          |
| 085-040-116 | OIL SEAL 1 3/8" ID X 1 7/8" OD     | 1                    | 1                         |                            |                         |                          |
| 085040198   | SEAL,INNER,CCW,BLUE                | 1                    | 1                         |                            |                         |                          |
| 085043469   | SEAL,SHAFT,CCW, BLUE               |                      |                           |                            | 1                       | 1                        |
| 085-043-469 | SHAFT OIL SEAL 2 SHAFT CCW         |                      |                           |                            |                         | 1                        |
| 085-043-463 | SHAFT OIL SEAL 2 SHAFT CW          |                      |                           |                            | 1                       |                          |
| 429-296-005 | SHAFT SLEEVE                       |                      | 1                         |                            |                         |                          |
| 430-726-008 | SHAFT SLEEVE                       |                      |                           |                            | 1                       | 1                        |
| 085-038-847 | SHIM ARBOR 1-1/8 ID X 1-5/8 OD     |                      | 5                         |                            |                         |                          |
| 085-038-838 | SHIM ARBOR RD STL 1-3/4 ID X       |                      |                           | 4                          | 4                       | 4                        |
| 085-038-843 | SHIM ARBOR STL 1-1/8 ID X 1-5/8    |                      | 3                         |                            |                         |                          |
| 085-038-839 | SHIM RD ST .002 X 1-3/4 ID         |                      |                           | 4                          | 4                       | 4                        |
| 085-038-846 | SHIM RD ST .005 X 1-1/8 THD        |                      | 4                         |                            | 4                       | 4                        |
| 085-038-837 | SHIM RD ST .007 X 1-3/4 ID         |                      |                           | 4                          | 4                       | 4                        |
| 085-038-836 | SHIM RD ST .008 X 1-3/4 ID         |                      |                           | 4                          | 4                       | 4                        |
| 085-038-844 | SHIM RD ST .015 X 1-1/8 ID         |                      | 1                         |                            |                         |                          |
| 085-038-835 | SHIM RD ST .025 X 1-3/4 ID         |                      |                           | 4                          | 4                       | 4                        |
| 085-039-031 | SHIM RD ST .031 X 1-1/8 ID         |                      | 1                         |                            |                         |                          |
| 085-038-834 | SHIM RD ST .031 X 1-3/4 ID         |                      |                           | 4                          | 4                       | 4                        |
| 085-038-833 | SHIM RD ST .062 X 1-3/4 ID         |                      |                           | 4                          | 4                       | 4                        |
| 085-038-845 | SHIM RD STL 010 X 1-1/8 ID         |                      | 1                         |                            |                         |                          |
| 429296005   | SLEEVE,SHAFT                       | 1                    |                           |                            |                         |                          |
| 431-240-001 | STEPPED KEY                        |                      |                           |                            | 1                       | 1                        |

| PART NUMBER | ITEM DESCRIPTION                  | 615,622 BOOSTER-CW 424096002CW | 615,622 BOOSTER-CCW 424096002CCW | 615,622 BSTR-CW NO BRGS 615CWNB | 615,622 BSTR-CCW NO BRGS 615CCWNB |
|-------------|-----------------------------------|--------------------------------|----------------------------------|---------------------------------|-----------------------------------|
| 085-044-345 | BALL BEARING 50MM X 90MM X 30.2MM | 4                              | 4                                |                                 |                                   |
| 424338002   | GASKET,COVER                      | 1                              | 1                                | 1                               | 1                                 |
| 431240001   | KEY,STEPPED                       | 1                              | 1                                | 1                               | 1                                 |
| 085040011   | O'RING,VITON,44.17 X 1.78 MM      | 1                              | 1                                | 1                               | 1                                 |
| 085043469   | SEAL,SHAFT,CCW,BLUE               | 1                              | 1                                | 1                               | 1                                 |
| 085043463   | SEAL,SHAFT,CW,RED                 | 1                              | 1                                | 1                               | 1                                 |
| 085-038-838 | SHIM ARBOR RD STL 1-3/4 ID X      | 4                              | 4                                | 4                               | 4                                 |
| 085-038-839 | SHIM RD ST .002 X 1-3/4 ID        | 4                              | 4                                | 4                               | 4                                 |
| 085-038-837 | SHIM RD ST .007 X 1-3/4 ID        | 4                              | 4                                | 4                               | 4                                 |
| 085-038-836 | SHIM RD ST .008 X 1-3/4 ID        | 4                              | 4                                | 4                               | 4                                 |
| 085-038-835 | SHIM RD ST .025 X 1-3/4 ID        | 4                              | 4                                | 4                               | 4                                 |
| 085-038-834 | SHIM RD ST .031 X 1-3/4 ID        | 4                              | 4                                | 4                               | 4                                 |
| 085-038-833 | SHIM RD ST .062 X 1-3/4 ID        | 4                              | 4                                | 4                               | 4                                 |
| 430726002   | SLEEVE,SHAFT,615 & 622            | 1                              | 1                                | 1                               | 1                                 |

### KITS

KIT BILL OF MATERIALS CAN BE FOUND LISTED ON THE 'KIT COMPONENTS' PAGES IMMEDIATELY FOLLOWING CORRESPONDING PUMP PAGES.

#### MINOR KITS

MINOR KITS INCLUDE O-RINGS, GASKETS, VALVES, SPRINGS, COUPLING ELEMENTS & OTHER COMPONENTS FOR LIGHT OVERHAUL.

| MODEL(S) | PART NUMBER |
|----------|-------------|
| 005      | 424092001   |
| 009      | 429319001   |
| 013      | 4240761     |
| 017/023  | 4240781     |



#### MAJOR KITS

MAJOR KITS INCLUDE ALL COMPONENTS OF MINOR KITS PLUS VANES, SPRINGS & BUSHINGS FOR MAJOR OVERHAUL.

| MODEL(S) | PART NUMBER  |
|----------|--------------|
| 005      | 424091001KIT |
| 009      | 429320001KIT |
| 013      | 4240771KIT   |
| 017/023  | 4240791KIT   |



### FEATURED SPARES

ALL AVAILABLE SPARES FOR THIS SERIES CAN BE FOUND LISTED ON THE 'INDIVIDUAL SPARES' PAGES AT THE END OF THIS SECTION.

#### VANES

| MODEL(S) |          | PART NUMBER |
|----------|----------|-------------|
| 013      | (1ST-LP) | 4276051G    |
| 013      | (2ND-HP) | 4276061G    |
| 017/023  | (1ST-LP) | 4276074G    |
| 017/023  | (2ND-HP) | 4276081G    |



#### BUSHINGS

| MODEL(S) |               | PART NUMBER |
|----------|---------------|-------------|
| 013      | (FRONT PLATE) | 428219001   |
| 013      | (INT. PLATE)  | 428218001   |
| 013      | (END PLATE)   | 428219001   |
| 017/023  | (FRONT PLATE) | 428219001   |
| 017/023  | (INT. PLATE)  | 428218001   |



#### COUPLINGS

| MODEL(S) | PART NUMBER |
|----------|-------------|
| 013      | 085039449   |
| 017/023  | 085039480   |



#### RECOMMENDED OILS

| TYPE                                     | PART NUMBER |
|--|-------------|
| PLUS 19 (1L/1.06QT)<br>GENERAL PURPOSE   | PP19001     |
| PLUS GOLD (1L/1.06QT)<br>FULLY SYNTHETIC | PPGOLD001   |
| PLUS FF (1L/1.06QT)<br>FLUSHING FLUID    | PPFF001     |



### KIT COMPONENTS

| PART NUMBER | ITEM DESCRIPTION                   | 005                | 005                   | 009                | 009                   |
|-------------|------------------------------------|--------------------|-----------------------|--------------------|-----------------------|
|             |                                    | MINOR<br>424092001 | MAJOR<br>424091001KIT | MINOR<br>429319001 | MAJOR<br>429320001KIT |
| 428-219-001 | BEARING                            |                    |                       |                    | 1                     |
| 428-810-001 | BEARING END PL                     |                    |                       |                    | 1                     |
| 428-809-001 | BEARING FRONT PL                   |                    |                       |                    | 1                     |
| 427-716-001 | DISC GAS BALLAST VALVE             | 1                  | 1                     | 1                  | 1                     |
| 429-009-001 | GASKET GAS BALLAST                 |                    |                       | 1                  | 1                     |
| 429-488-002 | KEY ROTOR                          |                    | 1                     |                    |                       |
| 085-007-754 | KEY WOODRUFF 5/32 X 5/8 X 5/8      |                    | 1                     |                    |                       |
| 430-184-003 | LEAF SPRING                        | 1                  | 1                     |                    |                       |
| 085-040-564 | LOVEJOY COUPLING SPIDER            |                    | 1                     |                    | 1                     |
| 085-037-672 | O RING .644" ID X .087" SECTION    | 2                  | 2                     | 2                  | 2                     |
| 085-040-204 | O RING 1 1/16" ID X .103" SECTION  |                    |                       |                    | 1                     |
| 085-039-333 | O RING 1 1/8" ID                   | 1                  | 1                     | 1                  | 1                     |
| 085-039-642 | O RING 1 11/16" ID X .103" SECTION |                    | 1                     |                    | 1                     |
| 085-023-256 | O RING 1 11/64" ID X .116" SECTION |                    | 1                     |                    | 1                     |
| 085-027-613 | O RING 1/2" ID X .103 SECTION      |                    |                       |                    | 1                     |
| 085-039-700 | O'RING .644 ID X .818 OD           |                    |                       |                    | 1                     |
| 085-038-218 | OIL SEAL                           |                    | 3                     |                    |                       |
| 085-039-187 | OIL SEAL                           |                    |                       |                    | 2                     |
| 085-039-629 | OIL SEAL .375" ID X 1" OD X 1/4"   |                    |                       |                    | 1                     |
| 429-004-003 | ORIFICE                            |                    | 2                     |                    |                       |
| 429-004-001 | ORIFICE GAS BALLAST                |                    |                       |                    | 1                     |
| 427-647-001 | PIN GEROTOR DRIVE                  |                    |                       |                    | 1                     |
| 429-473-002 | PIN SPRING GUIDE                   |                    | 1                     |                    |                       |
| 428-121-002 | RESERVOIR GASKET                   |                    |                       | 1                  | 1                     |
| 429-487-003 | RESERVOIR GASKET                   | 1                  | 1                     |                    |                       |
| 428-825-001 | ROTOR KEY                          |                    |                       |                    | 1                     |
| 085-040-406 | SPRING COMP .360 O.D. X .026       | 1                  | 1                     |                    | 1                     |
| 085-039-280 | SPRING COMP 55 .120 O.D. .020      |                    | 3                     |                    | 5                     |
| 429-314-001 | SPRING EXHAUST VALVE               |                    |                       | 3                  | 3                     |
| 430-322-001 | SPRING EXHAUST VALVE               | 2                  | 2                     |                    |                       |
| 429-937-002 | VALVE DISC                         | 1                  | 1                     |                    | 1                     |
| 429-345-001 | VALVE EXHAUST                      | 2                  |                       | 3                  |                       |
| 429345001   | VALVE EXHAUST                      |                    | 2                     |                    | 3                     |
| 427985004G  | VANE GX 1ST STAGE 11 CFM           |                    |                       |                    | 2                     |
| 429471006G  | VANE GX 1ST STAGE 7 CFM            |                    | 2                     |                    |                       |
| 427986004G  | VANE GX 2ND STAGE 11 CFM           |                    |                       |                    | 2                     |
| 429472005G  | VANE GX 2ND STAGE 7 CFM            |                    | 2                     |                    |                       |
| 429474002G  | VANE GX OIL PUMP 7 CFM             |                    | 1                     |                    |                       |



### KIT COMPONENTS

| PART NUMBER | ITEM DESCRIPTION                | 013 MINOR 4240761 | 013 MAJOR 4240771KIT | 17,023 MINOR 4240781 | 17,023 MAJOR 4240791KIT |
|-------------|---------------------------------|-------------------|----------------------|----------------------|-------------------------|
| 01855       | BALL,STEEL                      |                   | 1                    |                      | 1                       |
| 428-217-001 | BEARING END                     |                   | 1                    |                      | 1                       |
| 428219001   | BUSHING,FRONT PLATE             |                   | 2                    |                      | 1                       |
| 428218001   | BUSHING,INTERMEDIATE PLATE      |                   |                      |                      | 1                       |
| 085-040-224 | COMPRESSION SPRING SS           |                   | 1                    |                      | 1                       |
| 085039449   | COUPLING,SPIDER,L-075           | 1                 | 1                    |                      |                         |
| 085039480   | COUPLING,SPIDER,L-095           |                   |                      | 1                    | 1                       |
| 4279502     | GASKET,CASE                     | 1                 | 1                    |                      |                         |
| 427749001   | GASKET,RESERVOIR                |                   |                      | 1                    | 1                       |
| 427649001   | KEY,STEEL,3/4" X 3/16"          |                   | 1                    |                      | 1                       |
| 085039877   | O'RING,VITON,.1.78 X 1.78MM     | 1                 |                      | 1                    |                         |
| 085039252   | O'RING,VITON,.19.05 X 3.53MM    | 1                 | 1                    | 1                    | 1                       |
| 085039189   | O'RING,VITON,.41.28 X 2.62MM    | 1                 | 1                    | 1                    |                         |
| 085039191   | O'RING,VITON,.41.28 X 5.33MM    | 1                 | 1                    | 1                    | 1                       |
| 085037672   | O'RING,VITON,.644 X .087"       | 2                 | 2                    | 2                    | 2                       |
| 085039235   | O'RING,VITON,.65.07 X 2.62MM    |                   |                      |                      | 1                       |
| 085018635   | O'RING,VITON,1-13/16 ID X 3/32" | 1                 | 1                    | 1                    | 1                       |
| 085027613   | O'RING,VITON,12.70 X 2.62MM     | 1                 | 1                    | 1                    | 1                       |
| 085039448   | O'RING,VITON,17.17 X 1.78 MM    | 1                 |                      | 1                    |                         |
| 085040204   | O'RING,VITON,26.64 X 2.62 MM    | 1                 | 1                    | 1                    | 1                       |
| 085040225   | O'RING,VITON,261.4 X 2.7 MM     |                   |                      | 1                    | 1                       |
| 427-647-002 | PIN,GEROTOR DRIVE               |                   | 1                    |                      | 1                       |
| 085039187   | SEAL,LIP,OIL                    | 2                 | 2                    | 2                    | 2                       |
| 085039263   | SEAL,SHAFT,LIP,VITON            | 1                 | 1                    | 1                    | 1                       |
| 085039279   | SPRING,COMPRESSION,S/S          |                   | 1                    |                      | 1                       |
| 085039280   | SPRING,COMPRESSION,S/S          |                   | 6                    |                      | 6                       |
| 429314001   | SPRING,EXHAUST VALVE            | 4                 | 4                    | 4                    | 4                       |
| 429345001   | VALVE,EXHAUST                   | 4                 | 4                    | 4                    | 4                       |
| 427716001   | VALVE,GAS BALLAST,DISC,TEFLON   | 1                 | 1                    | 1                    | 1                       |
| 429925001   | VALVE,RUBBER,ANTI SUCK BACK     |                   | 1                    |                      | 1                       |
| 4276051G    | VANE,GX,1ST STAGE               |                   | 2                    |                      |                         |
| 4276074G    | VANE,GX,1ST STAGE               |                   |                      |                      | 2                       |
| 4276061G    | VANE,GX,2ND STAGE               |                   | 2                    |                      |                         |
| 4276081G    | VANE,GX,2ND STAGE               |                   |                      |                      | 2                       |

### INDIVIDUAL SPARES

#### BEARINGS

|             |  |                 |
|-------------|--|-----------------|
| 085-019-757 | BALL BEARING                           | 412J,412-14     |
| 085-033-232 | ROLLER BEARING 2.1654" ID X 3.9370" OD | 412J-14,412H-11 |
| 085016211   | BEARING,ROLLER,45MM                    | 148H-10         |
| 085019247   | BEARING,BALL,35MM ID X 72MM OD         | 149H-11         |
| 085037645   | BEARING,BALL,RADIAL,SINGLE ROW         | 306,310         |
| 085037646   | BEARING,BALL,RADIAL,DBL.,1.1811 ID     | 306,310         |
| 085044345   | USE - 085-044-345                      | 607,615,622     |
| 428-219-001 | BEARING                                | V-009-2         |

#### BUSHINGS

|           |                            |             |
|-----------|----------------------------|-------------|
| 256732001 | BUSHING,CENTER             |             |
| 428218001 | BUSHING,INTERMEDIATE PLATE | 013,017,023 |
| 428219001 | BUSHING,FRONT PLATE        | 013,017,023 |

#### CAMS

|             |                              |                 |
|-------------|------------------------------|-----------------|
| 247-394-008 | ECCENTRIC 149                | 149H-11         |
| 252459001   | ECCENTRIC,CAM,SOLID,412      | 212H-10,412H-10 |
| 254-612-005 | ECCENTRIC 148                | 148H-10         |
| 278575001   | ECCENTRIC,CAM,HOLLOW,212/412 | 212H-10         |

#### COUPLINGS

|             |                         |         |
|-------------|-------------------------|---------|
| 085-040-564 | LOVEJOY COUPLING SPIDER | V-005-2 |
| 085039449   | COUPLING,SPIDER,L-075   | 013     |
| 085039480   | COUPLING,SPIDER,L-095   | 017,023 |

#### GASKETS

|             |                                 |                 |
|-------------|---------------------------------|-----------------|
| 085038817   | GASKET,OIL INDICATOR,BUNA       | 146H-11         |
| 085038818   | GASKET,OIL INDICATOR,VITOND     | 146H-11         |
| 243926002   | GASKET,VALVE PLATE              | 412H-11         |
| 246763002   | GASKET,PLATE,VALVE COVER        | 146H-11         |
| 246764002   | GASKET,COVER PLATE,212H-10      | 212H-10         |
| 246765002   | GASKET,HOUSING,212H-10/ 212H-11 | 212H-10,212H-11 |
| 247381002   | GASKET,OIL SEPARATOR            | 149H-11         |
| 247404003   | GASKET,149H-11                  | 149H-11         |
| 248409002   | GASKET,OIL SEPARATOR            | 412H-10         |
| 2484092CORK | GASKET,OIL SEPARATOR            | 412H-10         |
| 248413002   | GASKET,HOUSING                  | 412H-10         |
| 257654001   | GASKET,148H-10                  | 148H-10,148-41  |
| 257663001   | GASKET,148H-10                  | 148H-10         |
| 263475001   | GASKET,HOUSING                  | 149H-11         |
| 264127001   | GASKET,COVER,RESERVOIR          | 146H-11         |
| 2661351     | GASKET,OIL SEPARATOR            | 212H-10         |
| 269037001   | GASKET,OIL SEPARATOR            | 412H-11         |
| 269043001   | GASKET,HOUSING,412H-11          | 412H-11         |
| 424338002   | GASKET,COVER                    | 607615          |
| 427749001   | GASKET,RESERVOIR                | 017,023         |
| 4279502     | GASKET,CASE                     | 013             |
| 428121002   | GASKET,RESERVOIR                | V-009-2         |
| 429-009-001 | GASKET GAS BALLAST              | 009             |
| 429-487-003 | RESERVOIR GASKET                | 005             |

#### HARDWARE

|             |                                |   |
|-------------|--------------------------------|---|
| 085-007-754 | KEY WOODRUFF 5/32 X 5/8 X 5/8  | V-005-2                                 |
| 264523001   | KEY,WOODRUFF,1-3/8" X 1/4"     | 149H-11,212H-10,212H-11,412H-10,412H-11 |
| 264524001   | KEY,WOODRUFF,1-1/2" X 3/8" 1   | 49H-11,212H-10,212H-11,412H-10,412H-11  |
| 27154-018   | WASHER SHOULDER                | RV3,RV5,RV8,RV12                        |
| 400047      | SCREW,SHCS,5/16-18X3/4"L       | 212H-11,412H-11                         |
| 408-324-005 | SQUARE KEY FOR ECC             | 412H-11                                 |
| 427649001   | KEY,STEEL,3/4" X 3/16"         | 013                                     |
| 429-488-002 | KEY ROTOR                      | V-005-2                                 |
| 431-240-001 | STEPPED KEY                    | 607                                     |
| 431240001   | KEY,STEPPED                    | 607,615                                 |
| 247389004   | HINGEBAR,OVERSIZE,1/32",149-11 | 149H-11                                 |
| 247389005   | HINGEBAR,OVERSIZE,1/16",149-11 | 149H-11                                 |
| 247389013   | HINGEBAR,STANDARD SIZE,149-11  | 149H-11                                 |
| 254688007   | HINGEBAR,STANDARD SIZE,148-10  | 148H-10                                 |
| 254688008   | HINGEBAR,OVERSIZE,1/32",148-10 | 148H-10                                 |
| 254688009   | HINGEBAR,OVERSIZE,1/16",148-10 | 148H-10                                 |
| 297857004   | HINGE BAR,STANDARD 2           | 12H-10,412H-10                          |
| 297857006   | HINGE BAR,O/S,1/32"            | 212H-10,412H-10                         |
| 297857007   | HINGE BAR,O/S,1/16"            | 212H-10,412H-10                         |
| 297857012   | HINGE BAR,O/S,1/8"             | 212H-11,412H-11                         |

## INDIVIDUAL SPARES

### KITS

|               |  |                 |
|---------------|--|-----------------|
| 085-024-135   | KIT O RING FOR CHECK VALVE             | 412H-11         |
| 085018194     | KIT,SHAFT SEAL,148H-10                 | 148H-10         |
| 263840006     | ASS'Y,EXHAUST VALVE,STD.,NYLON CLAPPER | 212H-11,412H-11 |
| 4240761       | KIT,MINOR,013                          | 013             |
| 4240771KIT    | KIT,MAJOR,GX                           | 013             |
| 4240781       | KIT,MINOR,017/023                      | 017,023         |
| 4240791KIT    | KIT,MAJOR,GX                           | 17023           |
| 4240891       | KIT,BLOWER SEAL,306/310                | 306,310         |
| 424091001KIT  | KIT MAJOR REPAIR GX 7 CFM              | V-005-2         |
| 424092001     | KIT,MINOR REPAIR,V-005-2               | 005             |
| 424094001     | KIT,PARTS,306/310-401                  | 306,310         |
| 424096002 CCW | KIT,BOOSTER,COUNTER CLOCKW,615         | 607615          |
| 424096002CW   | KIT,BOOSTER,CLOCKWISE,607/615          | 607615          |
| 424096003CCW  | KIT,REPAIR,COUNTER CLOCKWISE,607       | 607             |
| 424096003CW   | KIT,REPAIR,CLOCKWISE,607               | 607             |
| 424097001     | KIT,SHIM,607/615                       | 607,615         |
| 429319001     | KIT,MINOR REPAIR,009-2                 | 009             |
| 429320001KIT  | KIT MAJOR REPAIR GX 11 CFM             | V-009-2         |
| 429638015     | KIT,MAINTENANCE,412-14J                | 412J            |
| 429638015RK   | KIT,REPAIR,W/COIL                      | 412J,412-14     |
| 429638015RKB  | KIT,REPAIR,W/BEARINGS & COIL           | 412J,412-14     |
| 429638016     | SPARES KIT 212J-14                     | 212J            |
| 429638016RK   | KIT,REPAIR,WITH COIL                   | 212J            |
| 429638016RKB  | KIT,REPAIR,WITH BEARINGS AND COIL      | 212J            |
| 42963811      | KIT,REPAIR,STANDARD,412H10             | 412H-10         |
| 42963811K     | KIT,SEAL&GASKET,412H-10                | 412H-10         |
| 42963812      | KIT,REPAIR,W/COIL                      | 412H-11         |
| 42963812B     | KIT,REPAIR,W/BEARINGS & COIL 4         | 12H-11          |
| 42963812BP    | KIT,REPAIR,W/ BEARING & COIL,,POPPET   |                 |
| 42963812K     | KIT,SEAL&GASKET                        | 412H-11         |
| 42963812KP    | KIT,SEAL & GASKET,POPPET,412H-11       | 412H-11         |
| 42963812P     | KIT,REPAIR,W/ COIL,POPPET,412H-11      | 412H-11         |
| 4296384       | KIT,REP.,STD,WO/BRGS,148H-10           | 148H-10         |
| 4296384B      | KIT,STD,W/BEARINGS,148H-10             | 148H-10         |
| 4296384K      | KIT,SEAL&GASKET,148H-10                | 148H-10         |
| 4296386       | KIT,REPAIR,STANDARD,149H-11            | 149H-11         |
| 4296386B      | KIT,REPAIR,W/BEARINGS,149H-11          | 149H-11         |
| 4296386K      | KIT,SEAL&GASKET,149H-11                | 149H-11         |
| 4296388       | KIT,REPAIR,STANDARD,212H-10            | 212H-10         |
| 4296388K      | KIT,SEAL&GASKET,212H-10                | 212H-10         |
| 4296389       | KIT,REPAIR,W/COIL                      | 212H-11         |
| 4296389B      | KIT,REPAIR,W/BEARING & COIL            | 212H-11         |
| 4296389K      | KIT,SEAL&GASKET                        | 212H-11         |
| 4296389KP     | KIT,SEAL & GASKET,POPPET,212H-11       | 212H-11         |
| 4296389P      | KIT,REPAIR,W/ COIL,POPPET,212H-11      | 212H-11         |
| 615CCWNB      | KIT,BLOWER,W/O BRNGS,607/615           | 607615          |
| 615CWNB       | KIT,BLOWER,W/O BRNGS,607/615           | 607615          |

### MISC.

|             |  |                 |
|-------------|--|-----------------|
| 01855       | BALL,STEEL                               | 013             |
| 085-024-133 | REPLACEMENT PT.-BACK UP RING             | 148H-10,149H-11 |
| 085-034-799 | DOME PYREX WITH GLASS DOME GASKET        | 148H-10,149-11  |
| 085-036-101 | LEVEL SIGHT GAUGE 2" OD                  | 412H-11         |
| 085-039-008 | COMPOUND PRIMER N .02 FL OZ              | 148H-10         |
| 085-039-009 | COMPOUND RETAINING .5ML                  | 148H-10         |
| 085-040-224 | COMPRESSION SPRING SS                    | 013             |
| 085-050-128 | SCREEN WIRE MESH 24 X 24 .014            | 412J            |
| 085021037   | INDICATOR,BALL,FLOW,BRONZE               |                 |
| 085021873   | PLUG,EXPANSION,1-7/8 OD X .083" THK.,S/S | 412-H11         |
| 085034530   | INDICATOR,OIL FLOW,412H-11               | 412H-11         |
| 085034799   | DOME,PYREX,W/GLASS DOME GASKET           | 148H-10,149-11  |
| 408-867-004 | BELT GUARD ASSY                          | 412H-11         |
| 411-381-002 | BELT GUARD ASSY                          | 212H-11         |
| 427-647-001 | PIN GEROTOR DRIVE                        | V-009-2         |
| 427-647-002 | PIN,GEROTOR DRIVE                        | 013             |
| 428-217-001 | BEARING END                              | 013             |
| 428-809-001 | BEARING FRONT PL                         | V-009-2         |
| 428-810-001 | BEARING END PL                           | V-009-2         |
| 429-473-002 | PIN SPRING GUIDE                         | V-005-2         |
| 430-184-003 | LEAF SPRING                              | 005             |
| 606-766-001 | BELT GUARD ASSEMBLY CONSISTING           | 212J            |
| 607-416-001 | INSERT, VALVE CAP 148 212 412            | 412J            |

### INDIVIDUAL SPARES

#### O-RINGS

|             |  |                     |
|-------------|--|---------------------|
| 022-002-240 | O RING 2-1/8 ID X 2-3/8 OD               | 306,310             |
| 085-019-689 | O RING 2 3/8" ID X 2 1/2" OD             | SV300               |
| 085-023-256 | O RING 1 11/64" ID X .116" SECTION       | V-005-2             |
| 085-038-218 | OIL SEAL                                 | V-005-2             |
| 085-039-187 | OIL SEAL                                 |                     |
| 085-039-333 | O RING 1 1/8" ID                         | 005                 |
| 085-039-629 | OIL SEAL .375" ID X 1" OD X 1/4"         | V-009-2             |
| 085-039-642 | O RING 1 11/16" ID X .103" SECTION       | V-005-2             |
| 085-039-700 | O'RING .644 ID X .818 OD                 | V-009-2             |
| 085-040-116 | OIL SEAL 1 3/8" ID X 1 7/8" OD           | 306,310             |
| 085-041-609 | O RING 5/8" ID X .139" SECTION VITON 1/2 | 412J                |
| 085-050-115 | O RING 1/2 ID X .139 W -206              | 412J                |
| 085-050-116 | O RING 1 3/4" ID X .139" SECTION         | 412J                |
| 085-050-117 | O RING 13 1/2" ID X .139" SECTION        | 412J                |
| 085-050-118 | O RING 23" ID X .210" SECTION            | 412J                |
| 085-050-119 | O RING 28 1/4" ID X .210" SECTION        | 412J                |
| 085-050-192 | O RING 15/16 ID X .139W -213             | 412J                |
| 085-050-737 | O RING 15.375" X .210" SECTION           | 212J                |
| 085-050-761 | O RING 18" ID X .210" SECTION            | 212J                |
| 085010102   | O'RING,BUNA,85.32 X 3.53 MM              | 148H-10             |
| 085010163   | O'RING,VITON,2-7/8 ID X 1/8"             | 212H-10,412H-10     |
| 085014704   | O'RING,BUNA,101.19 X 3.53MM              | 149H-11             |
| 085018635   | O'RING,VITON,1-13/16 ID X 3/32"          | V-013-2,017-2,023-2 |
| 085019755   | O'RING,BUNA,125.8 X 3.53MM               | 412H-11             |
| 085024131   | O'RING,VITON,12.37 X 2.62MMNG            | 148H-10             |
| 085024132   | O'RING,VITON,15.54 X 2.62MMNG            | 148H-10             |
| 085027613   | O'RING,VITON,12.70 X 2.62MM              | 013-2,017,023       |
| 085037672   | O'RING,VITON,.644 X .087"                | 013,017,023         |
| 085038990   | O'RING,BUNA,111.1 X 2.62MM               | 306,310             |
| 085039189   | O'RING,VITON,.41.28 X 2.62MM             | 149H-11,013,017,023 |
| 085039191   | O'RING,VITON,.41.28 X 5.33MM             | 013,017,023         |
| 085039235   | O'RING,VITON,.65.07 X 2.62MM             | 017,023,D18,D28     |
| 085039252   | O'RING,VITON,.19.05 X 3.53MM             | 013,017,023         |
| 085039448   | O'RING,VITON,17.17 X 1.78 MM             | 013                 |
| 085039877   | O'RING,VITON,.1.78 X 1.78MM              | 013,017,023         |
| 085040011   | O'RING,VITON,44.17 X 1.78 MM             | 615                 |
| 085040199   | O'RING,VITON,28.6 X 1.78MM               | 306,310             |
| 085040204   | O'RING,VITON,26.64 X 2.62 MM             | TS300,013,017,023   |
| 085040225   | O'RING,VITON,261.4 X 2.7 MM              | 017,023             |
| 085040915   | O'RING,VITON,79 X 3 MM                   | 75CD,120CDE         |
| 085040928   | O'RING,VITON,45.7 X 3 MM                 |                     |
| 08519755V   | O'RING,VITON,123.42 X 3.53 MM            | 212H-11,412H-11     |
| 248-411-011 | OIL RESERVOIR COVER GASKET               | 412H-11             |
| 429-004-001 | ORIFICE GAS BALLAST                      | V-009-2             |
| 429-004-003 | ORIFICE                                  | V-005-2             |

#### PISTON SLIDES

|             |                      |                 |
|-------------|----------------------|-----------------|
| 243595011   | PISTON SLIDE 212/412 | 212H-10,412H-10 |
| 247-392-005 | PISTON & SLIDE 149   | 149H-11         |
| 254-609-001 | PISTON & SLIDE 148   | 148H-10         |

#### SEALS

|            |                              |                 |
|------------|------------------------------|-----------------|
| 085018189  | SEAL ROT 1-7/8 ID X 2-5/8 OD | 212H-10,412H-10 |
| 085029599  | SEAL,SHAFT                   | 149H-11         |
| 085029600  | SEAL,SHAFT,MECHANICAL        | 212H-11,412H-11 |
| 085039187  | SEAL,LIP,OIL                 | 013             |
| 085039263  | SEAL,SHAFT,LIP,VITON         | 013,017,023     |
| 085040198  | SEAL,INNER,CCW,BLUE          | 306,310         |
| 085040707  | SEAL,SHAFT,RADIAL LIP        | 607,615         |
| 085043463  | SEAL,SHAFT,CW,RED            | 607,615         |
| 085043469  | SEAL,SHAFT,CCW,BLUE          | 607,615,622     |
| 08518189SS | SEAL,SHAFT,212/412H-10       | 212H-10,412H-10 |
| 08518194SS | SEAL,SHAFT,148H-10           | 148H-10         |
| 08538203SS | SEAL,SHAFT,149H-11           | 149H-11         |
| 427121002  | ASSY,SEAL,O.E.M.             | 212H-11,412H-11 |

#### SHAFTS

|           |                      |               |
|-----------|----------------------|---------------|
| 252616012 | SHAFT, 212H-11, 212J | 212H-11, 212J |
| 262992005 | SHAFT,412H-11        | 412H-11, 412J |
| 262992005 | SHAFT,412H-11        | 412H-11, 412J |

#### SHIMS

|             |                            |         |
|-------------|----------------------------|---------|
| 085-038-833 | SHIM RD ST .062 X 1-3/4 ID | 607,615 |
|-------------|----------------------------|---------|



## INDIVIDUAL SPARES

### SHIMS (CONT.)

|             |                                 |         |
|-------------|---------------------------------|---------|
| 085-038-834 | SHIM RD ST .031 X 1-3/4 ID      | 607,615 |
| 085-038-835 | SHIM RD ST .025 X 1-3/4 ID      | 607,615 |
| 085-038-836 | SHIM RD ST .008 X 1-3/4 ID      | 607,615 |
| 085-038-837 | SHIM RD ST .007 X 1-3/4 ID      | 607,615 |
| 085-038-838 | SHIM ARBOR RD STL 1-3/4 ID X    | 607,615 |
| 085-038-839 | SHIM RD ST .002 X 1-3/4 ID      | 607,615 |
| 085-038-843 | SHIM ARBOR STL 1-1/8 IDX1-5/8 3 | 06,310  |
| 085-038-844 | SHIM RD ST .015 X 1-1/8 ID      | 306,310 |
| 085-038-845 | SHIM RD STL 010 X 1-1/8 ID      | 306,310 |
| 085-038-846 | SHIM RD ST .005 X 1-1/8 THD     | 306,310 |
| 085-038-847 | SHIM ARBOR 1-1/8 ID X 1-5/8 OD  | 306,310 |
| 085-039-031 | SHIM RD ST .031 X 1-1/8 ID      | 306,310 |

### SIGHT GLASSES

|       |                       |         |
|-------|-----------------------|---------|
| 52114 | SIGHT GLASS,OIL LEVEL | 412H-10 |
|-------|-----------------------|---------|

### SLEEVES

|           |                        |         |
|-----------|------------------------|---------|
| 429296005 | SLEEVE,SHAFT           | 306,310 |
| 430726002 | SLEEVE,SHAFT,615 & 622 | 607,615 |
| 430726008 | SLEEVE,SHAFT,607       | 615,622 |

### SOLENOID COILS & VALVES

|             |                                       |   |
|-------------|---------------------------------------|---|
| 085-029-430 | SOLENOID COIL 220/440V 50/60HZ 12W    | 412H-11                                 |
| 085-030-950 | SOLENOID COIL 220/240V 50/60HZ        | 146H-13,148H-10,149H-11,212H-10,212H-11 |
| 085680033   | COIL, SOLENOID, 240/60, 220/50        | 212,412                                 |
| 085680034   | COIL, SOLENOID, 480/60, 440/50        | 212,412                                 |
| U30011271   | SOLENOID VALVE 1/4" NPT 7/32" ORIFICE | 149H-11                                 |
| 085030713HV | VALVE, SOLENOID, 240/60, 220/50       | 212,412                                 |
| 085030713LV | VALVE, SOLENOID, 480/60, 440/50       | 212,412                                 |

### SPACERS

|           |   |         |
|-----------|---|---------|
| 248407004 | SPACER,STANDARD,412H-10                 | 412H-10 |
| 248407005 | SPACER,OVERSIZE,1/32",412H-10           | 412H-10 |
| 248407006 | SPACER,HINGEBAR,1/16" OS,412-10         | 412H-10 |
| 268788001 | SPACER,HINGEBAR,STANDARD,412-11         | 412H-11 |
| 268788002 | SPACER,HINGEBAR, 1/32" OVERSIZE,412H-11 | 412H-11 |
| 268788003 | SPACER,HINGEBAR,1/16" OS                | 412H-11 |
| 268788007 | SPACER,HINGEBAR,1/8" OS,412-11          | 412H-11 |

### SPRINGS

|             |                               |  |
|-------------|-------------------------------|--|
| 085-039-280 | SPRING COMP 55 .120 O.D. .020 | V-005-2,V-009-2                        |
| 085-040-406 | SPRING COMP .360 O.D. X .026  | 005                                    |
| 085024134   | SPRING,FOR #230B-2PP-2PP      | 148H-10                                |
| 085024138   | SPRING,CHECK VALVE,S/S        | 212H-10,212H-11,212-41,412H-10,412H-11 |
| 085039279   | SPRING,COMPRESSION,S/S        | 013,017,023                            |
| 085039280   | SPRING,COMPRESSION,S/S        | 013                                    |
| 08539768A   | SPRING                        | 013,017,023                            |
| 08539768B   | SPRING                        | 013,017,023                            |
| 274172002   | SPRING,VALVE,S/SEL            | 212H-11,412H-11                        |
| 429314001   | SPRING,EXHAUST VALVE          | 013                                    |

### VALVES

|             |                                |                 |
|-------------|--------------------------------|-----------------|
| 085-050-122 | VALVE CHK CRTG BRS BODY 1"D X  | 412J            |
| 085-052-306 | VALVE SPRING 148 212 412       | 412J            |
| 246-763-002 | VALVE COVER PLATE GASKET       | 212J            |
| 263840004   | ASSY,EXH. VALVE,HD,S/S,CLAPPER | 212H-11,412H-11 |
| 272963002   | VALVE,CLAPPER,STAINLESS STEEL  | 148H10,149H-11  |
| 276781002   | VALVE,CLAPPER,ZYTEL            | 148H-10         |
| 403-626-003 | VALVE CAP                      | 212H-11,412H-11 |
| 403-636-002 | VALVE SEAT                     | 212H-11,412H-11 |
| 427716001   | VALVE,GAS BALLAST,DISC,TEFLON  | 013             |
| 429-345-001 | VALVE EXHAUST                  | 005             |
| 429-937-002 | VALVE DISC                     | 005             |
| 429345001   | VALVE,EXHAUST                  | 013,017,023     |
| 429925001   | VALVE,RUBBER,ANTI SUCK BACK    | 013,017,023     |
| 607-415-001 | VALVE POPPET 148 212 412       | 412J            |
| 607417001   | ASSEMBLY,VALVE,POPPET          | 212H-11,412H-11 |

### VANES

|          |                   |       |
|----------|-------------------|-------|
| 4276051G | VANE,GX,1ST STAGE | 013   |
| 4276061G | VANE,GX,2ND STAGE | 013   |
| 4276074G | VANE,GX,1ST STAGE | 17023 |

**INDIVIDUAL SPARES**

**VANES (CONT.)**

|            |                          |         |
|------------|--------------------------|---------|
| 427985004G | VANE GX 1ST STAGE 11 CFM | V-009-2 |
| 427986004G | VANE GX 2ND STAGE 11 CFM | V-009-2 |
| 429471006G | VANE GX 1ST STAGE 7 CFM  | V-005-2 |
| 429472005G | VANE GX 2ND STAGE 7 CFM  | V-005-2 |
| 429474002G | VANE GX OIL PUMP 7 CFM   | V-005-2 |
| 429474002G | VANE GX OIL PUMP 7 CFM   | V-005-2 |

**VBELTS**

|             |                                   |                 |
|-------------|-----------------------------------|-----------------|
| 085-013-615 | V BELT A SECTION 76.3"PL SET OF 3 | 149H-11         |
| 085013669   | V-BELT,SINGLE,212H-11             | 212H-10         |
| 085013726   | BELT,"V",SET OF 4                 | 412H-10,412H-11 |
| 085015088   | BELT,"V",63" LONG                 | 148H-10         |