

KITS

KIT BILL OF MATERIALS CAN BE FOUND LISTED ON THE 'KIT COMPONENTS' PAGES IMMEDIATELY FOLLOWING CORRESPONDING PUMP PAGES.

TIP SEAL KITS

TIP SEAL KITS INCLUDE TIP SEAL & O-RINGS.

MODEL(S)
 SH 100/110
 TS 300
 TS 600

PART NUMBER
 SH0100TS
 TSS0300TS
 TSS0600TS



MAJOR REPAIR KITS

MAJOR REPAIR KITS INCLUDE TIP SEAL, SHAFT SEALS, BEARINGS, CRANK PINS, SPRINGS, CLIPS & ALL O-RINGS FOR COMPLETE OVERHAUL.

MODEL(S)
 TS 300
 TS 600

PART NUMBER
 TSS0300MK
 TSS0600MK



FEATURED SPARES

ALL AVAILABLE SPARES FOR THIS SERIES CAN BE FOUND LISTED ON THE 'INDIVIDUAL SPARES' PAGES AT THE END OF THIS SECTION.

CRANK PINS

MODEL(S)	REQ.	PART NUMBER
TS 300	(REQ. 3)	350010
TS 600	(REQ. 3)	350011



SHAFT SEALS

MODEL(S)	SIZE	PART NUMBER
TS 300/600	(32X42X4)	310057
TS 300/600	(8X15X3)	310058
TS 300	(24X32X4)	310059
TS 600	(22X30X4)	310060



CRANK SHAFTS

CONTACT CUSTOMER SERVICE FOR AVAILABILITY.

MODEL(S)	PART NUMBER
TS 300	4711001
TS 600	4811001



BEARINGS

MODEL(S)	PART NUMBER
TS 300/600	4718001
TS 300/600	4718005
TS 300/600	4818002
TS 300/600	4818003



KRYTOX GREASE

MODEL(S)	QTY	PART NUMBER
ALL	(5OZ)	870013

KIT COMPONENTS

PART NUMBER	ITEM DESCRIPTION	TS300 MAJOR TSS0300MK	TS300 TIP SEAL TSS0300TS	TS600 MAJOR TSS0600MK	TS600 TIP SEAL TSS0600TS
870014	19.GREASE,TEC,.5 OZ TUBE	1	1	1	1
350010	ASSEMBLY,SYNC CRANK PIN	3			
350011	ASSEMBLY,SYNC CRANK,600			3	
4718005	BEARING,BALL,2 SEALS,PFPE	1		1	
4818003	BEARING,BALL,7205W,KRYTOX	1		2	
4718001	BEARING,BALL,PFPE	1		1	
4818002	BEARING,BALL,PFPE	1		1	
330024	BEARING,NEEDLE,PFPE	3		3	
085039449	COUPLING,SPIDER,L-075	1		1	
320170	O'RING,VITON,10.69 X 3.53 MM	1			
417320	O'RING,VITON,10.77 X 2.62 MM	3			
320169	O'RING,VITON,113.97 X 2.62 MM	1		1	
320171	O'RING,VITON,13.87 X 3.53 MM			1	
40006	O'RING,VITON,13.94 X 2.62 MM			2	
320088	O'RING,VITON,15.6 X 1.78 MM	6		6	
320035	O'RING,VITON,17.12 X 2.62MM	1		1	
72591003	O'RING,VITON,21.9 X 2.6 MM	3			
320159	O'RING,VITON,221.85 X 3.53	1	1		
320167	O'RING,VITON,247.25 X 3.53 MM			1	1
085040204	O'RING,VITON,26.64 X 2.62 MM	1			
320168	O'RING,VITON,36.17 X 2.62 MM			1	1
619527	O'RING,VITON,52.07 X 2.62 MM	1	1	1	1
320111	O'RING,VITON,57 X 2.5 MM	1		1	
619378	O'RING,VITON,82.22 X 2.62 MM	1		1	
470018	RING,RETAINING,15MM	3		3	
470017	RING,RETAINING,18MM	1		1	
400067	SCREW,SET, M5 X .08 X 5MM LG,	6		6	
300056	SEAL, TIP, VARIAN	1	1	1	1
310058	SEAL,SHAFT, 8 X 15 X 3,BUNA TYPE KB	3		3	
310060	SEAL,SHAFT,22 X 30 X 4			1	
310059	SEAL,SHAFT,24X32X4	1			
310057	SEAL,SHAFT,BUNA,32X42X4MM	2		2	
540002	SLEEVE,NYLON	1		1	
490053	SPRING, COMPRESSION, STAINLESS	3		3	
860012	THREADLOCK,LOCTITE 242,,5ML	1		1	
860013	THREADLOCK,LOCTITE 567,6ML	1		1	

KITS

KIT BILL OF MATERIALS CAN BE FOUND LISTED ON THE 'KIT COMPONENTS' PAGES IMMEDIATELY FOLLOWING CORRESPONDING PUMP PAGES.

TIP SEAL KITS

MODEL(S)
DS 300
DS 600

PART NUMBER
P71002026
P71004026



CRANK PIN KITS

MODEL(S)
DS 300
DS 600

PART NUMBER
71002006
71004006

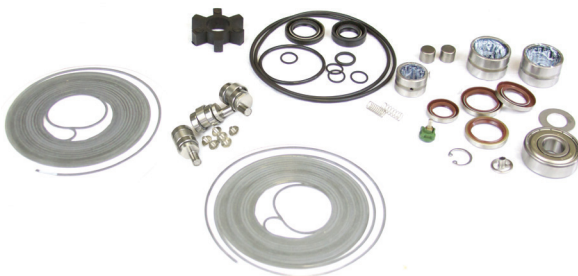


MAJOR REBUILD KITS

MAJOR REBUILD KITS INCLUDE TIP SEALS, CRANK PINS, BEARINGS, O-RINGS, SHAFT SEALS & OTHER COMPONENTS FOR COMPLETE OVERHAUL.

MODEL(S)
DS 300
DS 600

PART NUMBER
P71005800
P71004800



FEATURED SPARES

ALL AVAILABLE SPARES FOR THIS SERIES CAN BE FOUND LISTED ON THE 'INDIVIDUAL SPARES' PAGES AT THE END OF THIS SECTION.

CRANK SHAFTS

MODEL(S)
DS 300
DS 600

PART NUMBER
71002012
71003012



KIT COMPONENTS

PART NUMBER	ITEM DESCRIPTION	DS300 CRANK PIN 71002006	DS600 CRANK PIN 71004006	DS300 MAJOR P71005800	DS600 MAJOR P71004800
870014	19.GREASE,TEC,.5 OZ TUBE			1	1
A98881230	AIR FLUSH ASSEMBLY, SCROLL PUMP				1
330008	BEARING,2 METAL SHIELDS				1
330007	BEARING,6302ZZ			1	
08884010	BEARING,NEEDLE,20X28X13,PFPE				1
08880020	BEARING,NEEDLE,30X40X20,PFPE				2
08884001	BEARING,NEEDLE,CRANK PIN,PFPE				3
08880021	BEARING,NEEDLE,SCROLL,PFPE			2	
08884002	BEARING,NEEDLE,SCROLL,PFPE			2	
08884011	BEARING,NEEDLE,SCROLL,PFPE			1	
085039449	COUPLING,SPIDER,L-075			1	
71002006S	CRANKPIN,SINGLE	2		2	
71004006S	CRANKPIN,SINGLE		3		3
08881000	ELEMENT,COUPLING,BLACK				1
08883002	G-SEAL,FS-1,SCROLL PUMP			1	
08883005	G-SEAL,FS-2,SCROLL PUMP			1	
08883001	G-SEAL,OS,SCROLL PUMP			2	
7193002	GREASE SEAL, 20X28X4, GVSP30				1
08805041	GUIDE,OUTLET VALVE				1
08805042	GUIDE,OUTLET VALVE			1	
P71002026	KIT,TIP SEAL,OEM,GVSP12,ISP250			1	
P71004026	KIT,TIP SEAL,OEM,GVSP30,ISP500				1
20019794	O'RING, VITON, 17X1.5				1
320121	O'RING, VITON, 36X1.5				1
02122009V	O'RING,VITON,11 X 1.5 MM			4	
53598504	O'RING,VITON,12X2.31MM			1	
320087	O'RING,VITON,13.5 X 1.5 MM				1
320086	O'RING,VITON,14.5 X 1.5 MM				6
79506	O'RING,VITON,212 X 3 MM			1	
320189	O'RING,VITON,250 X 3 MM				1
23970304	O'RING,VITON,45 X 3 MM			1	1
470014	RING,RETAINING,M16,472,S/S			1	
400033	SCREW,PHILLIPS,"TRUSS HEAD"	4	6	4	6
400068	SCREW,WASHER HEAD,M3X4MM,STEEL			4	6
08882150	SEAL,GREASE,W/GARTER SPRING				2
08804072	SEAL,SHAFT,26X37X6,GVSP30				1
08883004	SEAL,SHAFT,FS-1,SCROLL PUMP			1	
08883003	SEAL,SHAFT,FS-2,SCROLL PUMP			1	
08882100	SEAL,SHAFT,VITON,25X37X4.25MM				1
08885012	SHAFT SEAL, 20X32X8, GVSP30				1
08801050	SPRING			1	1
08804390	SPRING,EXHAUST VALVE,ESDP30A				1
490055	SPRING,SS			1	
08805381	VALVE,EXHAUST STEM			1	
08802390	VALVE,EXHAUST,SDP-30A				1
08805380	VALVE,EXHAUST,STEM,ESDP30				1
420039	WASHER,SEAL,SCROLL,CLEAR, MYLAR				4
420038	WASHER,THRUST,1.09 X .6 X .04			1	

NOTE

INDIVIDUAL SPARE PARTS FOR TURBO PUMPS ARE NOT AVAILABLE SEPERATE FROM THE BELOW KITS.

KITS

REPAIR KITS

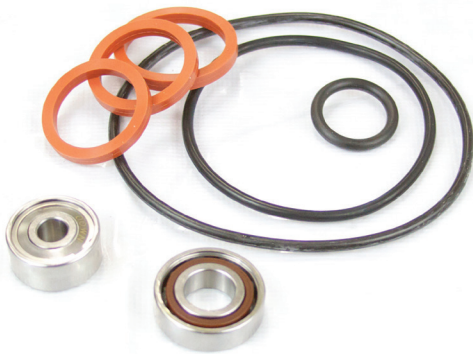
REPAIR KITS INCLUDE BEARINGS & SEALS TO COMPLETE BEARING REPLACEMENT.

MODEL(S)

V 60
V 70
V 250

PART NUMBER

PV60RK
PV70RK
PV250RK



TOOL KITS & MANUALS

TOOL KITS INCLUDE SPECIALTY AND COMMON TOOLS & INSTRUCTIONAL STEP-BY-STEP CD FOR TURBO PUMP MAINTENANCE.

MODEL(S)

V 60
V 70
V 250

PART NUMBER

PV60TK
PV70TK
PV250TK



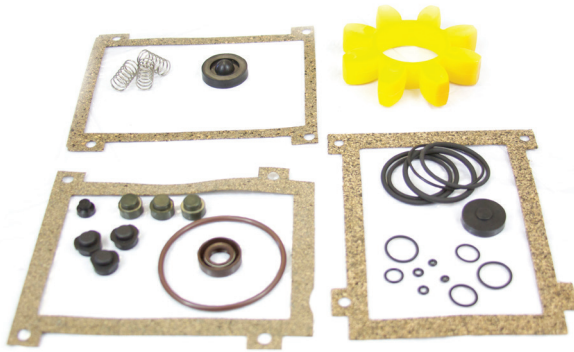
KITS

KIT BILL OF MATERIALS CAN BE FOUND LISTED ON THE 'KIT COMPONENTS' PAGES IMMEDIATELY FOLLOWING CORRESPONDING PUMP PAGES.

SEAL KITS

SEAL KITS INCLUDE COUPLING ELEMENT, O-RINGS, GASKET, SHAFT SEALS & OTHER COMPONENTS FOR LIGHT OVERHAUL.

MODEL(S)	PART NUMBER
DS 102/202/302	985700212001
DS 402/602	985700228008



MAJOR SERVICE KITS

MAJOR SERVICE KITS INCLUDE ALL COMPONENTS OF SEAL KITS PLUS VANES & OTHER COMPONENTS FOR MAJOR OVERHAUL.

MODEL(S)	PART NUMBER
DS 102	985700205002
DS 202/302	985700212002
DS 402/602	985700228002



FEATURED SPARES

ALL AVAILABLE SPARES FOR THIS SERIES CAN BE FOUND LISTED ON THE 'INDIVIDUAL SPARES' PAGES AT THE END OF THIS SECTION.

VANES

MODEL(S)		PART NUMBER
DS 102	(1ST STAGE)	230057G
DS 202/302	(1ST STAGE)	230055G
DS 402/602	(1ST STAGE)	230058G
DS 102/202/302	(2ND STAGE)	230056G
DS 402/602	(2ND STAGE)	230059G



SHAFT SEALS

MODEL(S)	PART NUMBER
DS 102/202/302	310055
DS 402/602	310054



SHAFT BUSHINGS (INNER)

MODEL(S)	PART NUMBER
DS 402/602	250012



RECOMMENDED OILS

TYPE	PART NUMBER
PLUS 19 (1L/1.06QT) GENERAL PURPOSE	PP19001
PLUS GOLD (1L/1.06QT) FULLY SYNTHETIC	PPGOLD001
PLUS FF (1L/1.06QT) FLUSHING FLUID	PPFF001



KIT COMPONENTS

PART NUMBER	ITEM DESCRIPTION	DS102-302	DS102	DS202,DS302	DS402,DS602	DS402,DS602
		SEAL 985700212001	MAJOR 985700205002	MAJOR 985700212002	SEAL 985700228008	MAJOR 985700228002
580039	ANTI-SUCKBACK,SHUTTER,VITON	1	1	1		
580040	ANTI-SUCKBACK,VALVE,SHUTTER	1	1	1	1	1
390008	BALL,STEEL,9/32"DIA.		1	1		
500501190001S	ELEMENT,COUPLING,YELLOW	1	1	1	1	1
720012	FILTER,SCREEN,ST.STL.					1
780030	FILTER,SCREEN,ST.STL.		1	1		
640015	FOOT,BUFFER		4	4		4
300052	GASKET,CASING,CORK				1	1
300055	GASKET,CORK,1.5MM THICK	1		1		
300053	GASKET,CORK,1MM THICK	1	1	1		
300054	GASKET,CORK,1MM THICK	1	1			
250012	INNER RING,SHAFT,BUSHING					1
320270	O'RING, VITON, 8.73MM X 1.78MM					1
320126	O'RING,BUNA,3.0 X 1.0MM				2	2
320131	O'RING,VITON,1.78 X 1.78MM	2	2	2	2	2
72591001	O'RING,VITON,10.82 X 1.78 MM				1	1
02122009V	O'RING,VITON,11 X 1.5 MM	1	1	1		
02124119	O'RING,VITON,12.42 X 1.78 MM	1	1	1		
23970106	O'RING,VITON,13.3 X 2.4 MM				1	1
320088	O'RING,VITON,15.6 X 1.78 MM	2	2	2	2	2
320132	O'RING,VITON,2.9 X 1.78MM	2	2		2	2
320109	O'RING,VITON,33 X 2.5 MM	1	1	1	1	1
40009	O'RING,VITON,37.77 X 2.62 MM	1	1			
320113	O'RING,VITON,38 X 3.5 MM	1	1	1		
320119	O'RING,VITON,39.5X3 MM	1		1		
320072	O'RING,VITON,41 X 1.78 MM	1	1	1		
320108	O'RING,VITON,47.22 X 3.53MM				2	2
02122079	O'RING,VITON,49.5 X 3 MM				1	1
02122058	O'RING,VITON,61.6 X 3.5 MM	1	1	1	1	1
320133	O'RING,VITON,7.65 X 1.7MM	1	1	1		
23970101	O'RING,VITON,9 X 1.5 MM				1	
320269	ORING,VITON,1MM X 3MM			2		
720013	PAD,FELT					1
720018	PAD,FELT			1		
450034	PIN,COTTER,HAIRPIN		1	1		1
450033	PIN,DOWEL,CENTERING,6 X 12MM		4	4		4
470013	RING,E-CLIP,STAINLESS STEEL			1		1
310055	SEAL,SHAFT,12X24X7,VITON	1	1	1		
310054	SEAL,SHAFT,15X24X7,VITON				1	1
619385A	SPRING,BYPASS VALVE,COMP.,S/S			1		
490028	SPRING,COMPRESSION,STL/ST	1	1	1		1
490029	SPRING,COMPRESSION,STL/ST		1	1		
490030	SPRING,COMPRESSION,STL/ST		1	1		
619561A	SPRING,EXHAUST VALVE,COMP.,S/S	3	3	3	3	3
490031	SPRING,TORSION,SPECIAL ENDS		1	1		
490032	SPRING,TORSION,SPECIAL ENDS		1	1		
490033	SPRING,TORSION,SPECIAL ENDS					1
490034	SPRING,VANE		2	2		2
380017	VALVE,BUNA	1	1	1	1	1
52655	VALVE,DSCHRG,VITON,2004-20AAC	3	3	3		
380016	VALVE,EXHAUST,VITON	3	3	3	3	3
230055G	VANE 1ST STAGE GX			2		
230057G	VANE 1ST STAGE GX		2			
230058G	VANE 1ST STAGE GX					2
230056G	VANE 2ND STAGE GX		2	2		
230059G	VANE 2ND STAGE GX					2

KITS

KIT BILL OF MATERIALS CAN BE FOUND LISTED ON THE 'KIT COMPONENTS' PAGES IMMEDIATELY FOLLOWING CORRESPONDING PUMP PAGES.

FRONT SEAL KITS

FRONT SEAL KITS INCLUDE SHAFT SEAL, FELT PAD, SHOULDER RING & O-RINGS.

MODEL(S)	PART NUMBER
SD 91	65875
CP 451	65612

MINOR KITS

MINOR KITS INCLUDE O-RINGS, GASKETS, VALVES, WASHERS, SHAFT SEALS & OTHER COMPONENTS FOR LIGHT OVERHAUL.

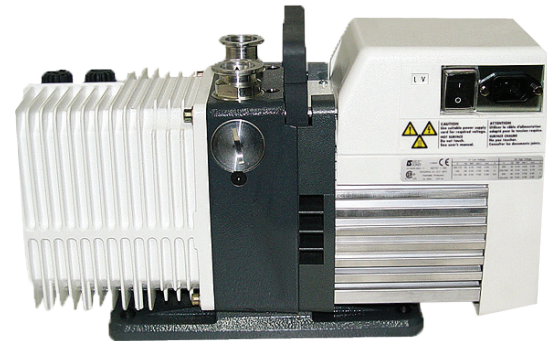
MODEL(S)	PART NUMBER
SD 91	103911
CP 451	104975



MAJOR KITS

MAJOR KITS INCLUDE ALL COMPONENTS OF MINOR KITS PLUS VANES, SPRINGS, SIGHT GLASS, COUPLING ELEMENT & DRAIN PLUG FOR MAJOR OVERHAUL.

MODEL(S)	PART NUMBER
SP 91	103902FR
CP 451	104616FR



FEATURED SPARES

ALL AVAILABLE SPARES FOR THIS SERIES CAN BE FOUND LISTED ON THE 'INDIVIDUAL SPARES' PAGES AT THE END OF THIS SECTION.

ROTORS

MODEL(S)		PART NUMBER
SD 91	(1ST-LP STAGE)	65745
CP 451	(1ST-LP STAGE)	65803
SD 91	(2ND-HP STAGE)	65852
CP 451	(2ND-HP STAGE)	102854



VANES

MODEL(S)		PART NUMBER
SD 91	(1ST-LP STAGE)	65760FR
SD 91	(2ND-HP STAGE)	65756FR
CP 451	(1ST-LP STAGE)	65759FR
CP 451	(2ND-HP STAGE)	65756FR
CP 451	(OIL PUMP)	230044FR



RECOMMENDED OILS

TYPE	PART NUMBER
PLUS 19 (1L/1.06QT) GENERAL PURPOSE	PP19001
PLUS GOLD (1L/1.06QT) FULLY SYNTHETIC	PPGOLD001
PLUS FF (1L/1.06QT) FLUSHING FLUID	PPFF001



KIT COMPONENTS

PART NUMBER	ITEM DESCRIPTION	SD91 SEAL 65875	SD91 MINOR 103911	SD91 MAJOR 103902FR	CP451 SEAL 65612	CP451 MINOR 104975	CP451 MAJOR 104616FR
71161	C-CLIP,2004/8/12/20AAC		1	1			
52553	COUPLER,ELASTIC,2004-20A/AC		1	1		1	1
340024	DEVICE,ABS,VITON,BROWN,70DUROM		1	1		1	1
65789	GASKET,SIGHT GLASS					1	
71067	KEY,SHAFT			1			1
52700	LEVER,ASB,VITON,2012/20A&C			1			
340023	NIB,ANTISUCK BACK,VITON					1	1
54340V	NIB,ASB,VITON,2004/8/12/20AAC		1				
82007	O'RING,VITON,10.77 X 2.62 MM		1	1		1	1
320036	O'RING,VITON,12.1 X 2.7 MM	1	1	1	1	1	1
79148	O'RING,VITON,165 X 3 MM		1	1		1	1
320035	O'RING,VITON,17.12 X 2.62MM		3	3		3	3
79509	O'RING,VITON,28 X 3 MM		1	1		1	1
82025	O'RING,VITON,29.3 X 3.6 MM		4	4		4	4
320109	O'RING,VITON,33 X 2.5 MM		1	1		1	1
82014	O'RING,VITON,34.1 X 3.6 MM	1	1	1	1	1	1
40007	O'RING,VITON,34.52 X 3.53 MM					1	
82004	O'RING,VITON,5.7 X 1.9 MM		3	3		2	2
320067	O'RING,VITON,63.09 X 3.53 MM		1	1		1	1
82003	O'RING,VITON,7.2 X 1.9 MM					1	1
79537	O'RING,VITON,7.5 X 1.5 MM		1	1		1	1
40005	O'RING,VITON,9.25 X 1.78 MM		1	1		1	1
79513	O'RING,VITON,90 X 2 MM		4	4		4	4
720007	PAD,FELT,2010C2/15SD/05C1/21C2	1	1	1	1	1	1
71040	PIN,CENTERING,2004-63AAC-C		4	4		4	4
82604	PLUG,DRAIN,PLASTIC,2004A-2063C			3			3
250010	RING,SHOULDERED,2010C2/2021C2				1		1
250011	RING,SHOULDERED,2015SD/05C1	1		1			
65846	RING,SHOULDERED,STANDARD			1			
82063	SEAL,SHAFT,VITON	1	4	4	1	4	4
65784	SIGHT GLASS,2010/15/21CP			1			1
580031	SLEEVE,GAS,BALLAST,ALCATEL		1	1		1	1
65797	SPRING		1	1		1	1
65799	SPRING		1	1		1	1
52541	SPRING,VALVE		4	1		4	4
53040	SPRING,VANE,MW		8	4		8	8
390007	VALVE DISK,VITON		4	1		4	4
65791	VALVE,FOR PASCAL PUMP		1	1			
65759FR	VANE,GX,1ST STAGE						2
65760FR	VANE,GX,1ST STAGE			2			
65756FR	VANE,GX,2ND STAGE			2			2
230044FR	VANE,GX,OIL PUMP					1	1
420029	WASHER,FLAT,STEEL,ZINC CHROMAT		2	2		2	2
84646	WASHER,WAVED					1	1
73460	WASHER,WAVED,S.S.,M6		19	19		16	16
73452	WASHER,WAVED,STEEL,M4		4	4		4	4
73453	WASHER,WAVED,STEEL,M5		1	1		1	1

KITS

KIT BILL OF MATERIALS CAN BE FOUND LISTED ON THE 'KIT COMPONENTS' PAGES IMMEDIATELY FOLLOWING CORRESPONDING PUMP PAGES.

MINOR KITS

MINOR KITS INCLUDE COUPLING ELEMENT, C-CLIPS, O-RINGS, GASKETS, VALVES, WASHERS, SHAFT SEALS & OTHER COMPONENTS FOR LIGHT OVERHAUL.

MODEL(S)	PART NUMBER
SD 90/200/300/450	52610



MAJOR KITS

MAJOR KITS INCLUDE ALL COMPONENTS OF MINOR KITS PLUS VANES, SPRINGS, SIGHT GLASS & DRAIN PLUG FOR MAJOR OVERHAUL.

MODEL(S)	PART NUMBER
SD 90	52614FR
SD 200	52613FR
SD 300	52611FR
SD 450	52982FR



FEATURED SPARES

ALL AVAILABLE SPARES FOR THIS SERIES CAN BE FOUND LISTED ON THE 'INDIVIDUAL SPARES' PAGES AT THE END OF THIS SECTION.

ROTORS

MODEL(S)	PART NUMBER
SD 90	(1ST-LP STAGE) 52513
SD 200	(1ST-LP STAGE) 52512
SD 300	(1ST-LP STAGE) 52509
SD 450	(1ST-LP STAGE) 52956
SD 90/200/300	(2ND-HP STAGE) 52715
SD 450	(2ND-HP STAGE) 52943



STATORS

MODEL(S)	PART NUMBER
SD 90	(1ST-LP STAGE) 52572
SD 200	(1ST-LP STAGE) 52582
SD 300	(1ST-LP STAGE) 52574
SD 90/200/300	(2ND-HP STAGE) 52711



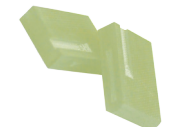
PLATES

MODEL(S)	PART NUMBER
SD 90/200/300	(FRONT) 52575
SD 90/200/300	(INT) 52573
SD 90/200/300	(REAR) 526861



VANES

MODEL(S)	PART NUMBER
SD 90	(1ST-LP STAGE) 83946FR
SD 200	(1ST-LP STAGE) 53106FR
SD 300	(1ST-LP STAGE) 83945FR
SD 90/200/300	(2ND-HP STAGE) 83946FR



RECOMMENDED OILS

TYPE	PART NUMBER
PLUS 19 (1L/1.06QT) GENERAL PURPOSE	PP19001
PLUS GOLD (1L/1.06QT) FULLY SYNTHETIC	PPGOLD001
PLUS FF (1L/1.06QT) FLUSHING FLUID	PPFF001



KIT COMPONENTS

PART NUMBER	ITEM DESCRIPTION	ALL MINOR 52610	SD90 MAJOR 52614FR	SD200 MAJOR 52613FR	SD300 MAJOR 52611FR	SD450 MAJOR 52982FR
82522	BALL,GAS BALLAST	1	1	1	1	1
71161	C-CLIP,2004/8/12/20AAC	1	1	1	1	1
83653	C-CLIP,STEEL,2004/8/12/20A	2	2	2	2	2
52642	CLAPPER,EXHAUST,BUNA	1	1	1	1	1
52557	CLAPPER,EXHAUST,VITON	1	1	1	1	1
52553	COUPLER,ELASTIC,2004-20A/AC	1	1	1	1	1
52755	GASKET,CASE,2004/8/12/20AACCP	1	1	1	1	1
52555	GASKET,FAN PLATE	1	1	1	1	1
83649	KEY,SHAFT				1	1
52750	LEVER,ASB,BUNA,2004/8/12/20A		1	1	1	1
54340V	NIB,ASB,VITON,2004/8/12/20AAC	1			1	
84149	O'RING,BUNA,16 X 2 MM	2	2	2	2	2
82120	O'RING,BUNA,26.57 X 3.53 MM	1	1	1	1	1
79238	O'RING,BUNA,28 X 5 MM	1	1	1	1	1
82122	O'RING,BUNA,29.3 X 3.6 MM	1	1	1	1	1
83633	O'RING,BUNA,38 X 2.5 MM	1	1	1	1	1
82105	O'RING,BUNA,5 X 2 MM	1	1	1	1	1
82033	O'RING,VITON,82 X 2 MM	5	5	5	5	5
52990	PAD,FELT,2004A-2020CP	1	1	1	1	1
71050	PIN,DOWEL,2004/8/12/20A	1	1	1	1	1
54071	PIN,RETAINING	1	1	1	1	1
82604	PLUG,DRAIN,PLASTIC,2004A-2063C		2	2	2	2
82063	SEAL,SHAFT,VITON	4	4	4	4	4
83546	SIGHT GLASS,PLASTIC,W/SEAL		1	1	1	1
52563	SPRING,GAS BALLAST	1	1	1	1	1
52564	SPRING,GAS BALLAST,BALL	1	1	1	1	1
52541	SPRING,VALVE	4	2	3	4	4
53040	SPRING,VANE,MW		12	14	8	8
52655	VALVE,DSCHRG,VITON,2004-20AAC	4	2	3	4	4
52562B	VALVE,GAS BALLAST,BUNA	1	1	1	1	1
52959FR	VANE,GX,1ST STAGE					2
53106FR	VANE,GX,1ST STAGE			2		
83945FR	VANE,GX,1ST STAGE				2	
52958FR	VANE,GX,2ND STAGE					2
83946FR	VANE,GX,2ND STAGE		4	2	2	
73339	WASHER,FLAT,SMALL O.D.,S.S.,M4	3	3	3	3	3
73460	WASHER,WAVED,S.S.,M6	9	9	9	9	9
73461	WASHER,WAVED,S.S.,M8	6	6	6	6	6

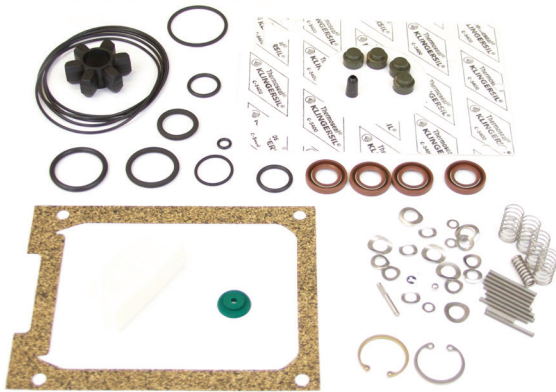
KITS

KIT BILL OF MATERIALS CAN BE FOUND LISTED ON THE 'KIT COMPONENTS' PAGES IMMEDIATELY FOLLOWING CORRESPONDING PUMP PAGES.

MINOR KITS

MINOR KITS INCLUDE COUPLING ELEMENT, C-CLIPS, O-RINGS, GASKETS, VALVES, WASHERS, SHAFT SEALS & OTHER COMPONENTS FOR LIGHT OVERHAUL.

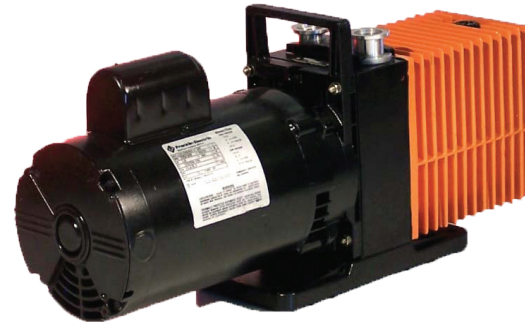
MODEL(S)	PART NUMBER
ALL	52624



MAJOR KITS

MAJOR KITS INCLUDE ALL COMPONENTS OF MINOR KITS PLUS VANES, SPRINGS, SIGHT GLASS & DRAIN PLUG FOR MAJOR OVERHAUL.

MODEL(S)	PART NUMBER
CD 200	52626FR
CD 300	52625FR



FEATURED SPARES

ALL AVAILABLE SPARES FOR THIS SERIES CAN BE FOUND LISTED ON THE 'INDIVIDUAL SPARES' PAGES AT THE END OF THIS SECTION.

ROTORS

MODEL(S)	PART NUMBER
CD 200	(1ST-LP STAGE) 52535
CD 300	(1ST-LP STAGE) 52533
ALL	(2ND-HP STAGE) 52715



STATORS

MODEL(S)	PART NUMBER
CD 200	(1ST-LP STAGE) 52582
CD 200	(1ST-LP STAGE) 52574
ALL	(2ND-HP STAGE) 52711



PLATES

MODEL(S)	PART NUMBER
ALL	(FRONT) 52575
ALL	(INT) 52650
ALL	(REAR) 52687



VANES

MODEL(S)	PART NUMBER
CD 200	(1ST-LP STAGE) 53106FR
CD 300	(1ST-LP STAGE) 83945FR
ALL	(2ND-HP STAGE) 83946FR



SHAFT SEALS

MODEL(S)	PART NUMBER
ALL	(VITON) 82063



RECOMMENDED OILS

TYPE	PART NUMBER
PLUS 19 (1L/1.06QT) GENERAL PURPOSE	PP19001
PLUS GOLD (1L/1.06QT) FULLY SYNTHETIC	PPGOLD001
PLUS FF (1L/1.06QT) FLUSHING FLUID	PPFF001



KIT COMPONENTS

PART NUMBER	ITEM DESCRIPTION	ALL MINOR 52624	CD200 MAJOR 52626FR	CD300 MAJOR 52625FR
82522	BALL,GAS BALLAST	1	1	1
71161	C-CLIP,2004/8/12/20AAC	1	1	1
71181	C-CLIP,S.S.,2004/8/12/20AC	2	2	2
52557	CLAPPER,EXHAUST,VITON	1	1	1
52553	COUPLER,ELASTIC,2004-20A/AC	1	1	1
52755	GASKET,CASE,2004/8/12/20AACCP	1	1	1
52555	GASKET,FAN PLATE	1	1	1
83649	KEY,SHAFT		1	1
52700	LEVER,ASB,VITON,2012/20A&AC		1	1
54340V	NIB,ASB,VITON,2004/8/12/20AAC		1	1
82022	O'RING,VITON,17.12 X 2.62 MM	2	2	2
82021	O'RING,VITON,19.8 X 3.6 MM	1	1	1
79133	O'RING,VITON,21 X 2 MM	1	1	1
79268	O'RING,VITON,26.2 X 3.6 MM	1	1	1
82025	O'RING,VITON,29.3 X 3.6 MM	1	1	1
82056	O'RING,VITON,37 X 2.5 MM	1	1	1
82004	O'RING,VITON,5.7 X 1.9 MM	1	1	1
82033	O'RING,VITON,82 X 2 MM	5	5	5
52990	PAD,FELT,2004A-2020CP	1	1	1
71050	PIN,DOWEL,2004/8/12/20A		1	1
54071	PIN,RETAINING	1	1	1
52752	PLUG,DRAIN		1	1
82063	SEAL,SHAFT,VITON	4	4	4
52683	SIGHT GLASS,DISC		1	1
83546	SIGHT GLASS,PLASTIC,W/SEAL		1	1
52563	SPRING,GAS BALLAST	1	1	1
52564	SPRING,GAS BALLAST,BALL	1	1	1
52541	SPRING,VALVE	4	3	4
53040	SPRING,VANE,MW		6	8
52655	VALVE,DSCHRG,VITON,2004-20AAC	4	3	4
52562B	VALVE,GAS BALLAST,BUNA	1	1	1
53106FR	VANE,GX,1ST STAGE		2	
83945FR	VANE,GX,1ST STAGE			2
83946FR	VANE,GX,2ND STAGE		2	2
73339	WASHER,FLAT,SMALL O.D.,S.S.,M4	3	3	3
73460	WASHER,WAVED,S.S.,M6	9	9	9
73461	WASHER,WAVED,S.S.,M8	6	6	6

KITS

KIT BILL OF MATERIALS CAN BE FOUND LISTED ON THE 'KIT COMPONENTS' PAGES IMMEDIATELY FOLLOWING CORRESPONDING PUMP PAGES.

MINOR KITS

MINOR KITS INCLUDE COUPLING ELEMENT, C-CLIPS, O-RINGS, GASKETS, VALVES, WASHERS, SHAFT SEALS & OTHER COMPONENTS FOR LIGHT OVERHAUL.

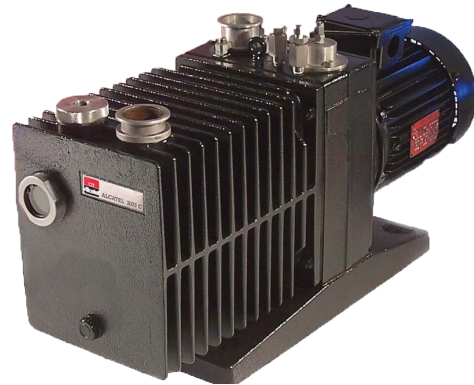
MODEL(S)	PART NUMBER
CD 700	54286
CD 1400	54488



MAJOR KITS

MAJOR KITS INCLUDE ALL COMPONENTS OF MINOR KITS PLUS VANES, SPRINGS, SIGHT GLASS & DRAIN PLUG FOR MAJOR OVERHAUL.

MODEL(S)	PART NUMBER
CD 700	54289KIT
CD 1400	54489KIT



FEATURED SPARES

ALL AVAILABLE SPARES FOR THIS SERIES CAN BE FOUND LISTED ON THE 'INDIVIDUAL SPARES' PAGES AT THE END OF THIS SECTION.

ROTORS

MODEL(S)	PART NUMBER
CD 700 (1ST-LP COATED)	55182
CD 1400 (1ST-LP COATED)	54439
CD 700 (2ND-HP STAGE)	54183
CD 1400 (2ND-HP STAGE)	54433



STATORS

MODEL(S)	PART NUMBER
CD 700 (1ST-LP STAGE)	54120
CD 1400 (1ST-LP STAGE)	54411
CD 700 (2ND-HP STAGE)	54122
CD 1400 (2ND-HP STAGE)	54415



PLATES

MODEL(S)	PART NUMBER
CD 700 (INTER-BRONZE)	54121
CD 700 (INTER-CARBON)	54190
CD 700 (REAR-BRONZE)	54250
CD 1400 (INTER-BRONZE)	54413
CD 1400 (INTER-CARBON)	54434
CD 1400 (REAR-BRONZE)	65505
CD 1400 (REAR-CARBON)	65506



SHAFT SEALS

MODEL(S)	PART NUMBER
ALL (VITON)	79101



RECOMMENDED OILS

TYPE	PART NUMBER
PLUS 19 (1L/1.06QT) GENERAL PURPOSE	PP19001
PLUS GOLD (1L/1.06QT) FULLY SYNTHETIC	PPGOLD001
PLUS FF (1L/1.06QT) FLUSHING FLUID	PPFF001



KIT COMPONENTS

PART NUMBER	ITEM DESCRIPTION	CD700	CD700	CD1400	CD1400
		MINOR 54286	MAJOR 54289KIT	MINOR 54488	MAJOR 54489KIT
54197	ASSY,SIGHT GLASS,33/63 33C/63C	1	1	1	1
820048	BOX,WHITE,14.5 X 10.5 X 2.5"		1		1
76261C	C-CLIP,2033/63	1	1	1	1
71188	C-CLIP,2033/63C	2	2	2	2
71191	C-CLIP,2033/63C	1	1	1	1
54224	CLAPPER,2033/63	1	1	1	1
54091	COUPLER,ELSTC,BLUE,2030-2033C	1	1		
54356	COUPLING,ELASTIC,2060/63C			1	1
54128	GASKET,CASE,2033C	1	1		
54427	GASKET,CASE,2063C			1	1
103306	GASKET,SIGHT GLASS	1	1	1	1
54196	MEMBRANE,OIL PUMP	1	1	1	1
71338	NUT	1	1	1	1
82007	O'RING,VITON,10.77 X 2.62 MM	1	1	1	1
82039	O'RING,VITON,128 X 2 MM	4	4		
79137	O'RING,VITON,148 X 2 MM			4	4
82022	O'RING,VITON,17.12 X 2.62 MM	1	1	1	1
82025	O'RING,VITON,29.3 X 3.6 MM	2	2	2	2
82056	O'RING,VITON,37 X 2.5 MM	1	1	1	1
82013	O'RING,VITON,40.64 X 5.33 MM	1	1	1	1
82067	O'RING,VITON,44 X 3 MM	3	3	3	3
320067	O'RING,VITON,63.09 X 3.53 MM	1	1	1	1
79134	O'RING,VITON,8 X 2 MM	2	2	2	2
82015	O'RING,VITON,9.19 X 2.62 MM	1	1	1	1
82027	O'RING,VITON,91.44 X 5.33 MM	1	1	1	1
79136	O'RING,VITON,95 X 3 MM	1	1	1	1
65538	PAD,FELT			1	1
65059	PAD,FELT,2033-2033CP+	1	1		
76261	PIN,COTTER,2033/63	1		1	1
82604	PLUG,DRAIN,PLASTIC,2004A-2063C	1	1	1	1
82925	PLUG,FILL,2033-2063C	1	1	1	1
75024	SCREW,SOCKET HEAD CAP,YLW CH	1	1	1	1
79101	SEAL,SHAFT,VITON	4	4	4	4
103307	SIGHT GLASS,OIL,GLASS	1	1	1	1
54145	SPRING	1	1	1	1
54149	SPRING	1	1	1	1
87954	SPRING,VALVE	3	3	3	3
87942	SPRING,VANE		9		9
53443	VALVE,DISCHRG,VITON 2033/63C	3	3	3	3
54134	VALVE,EXHAUST,2033/63C	1	1	1	1
54400G	VANE,GX,1ST STAGE				2
87941G	VANE,GX,1ST STAGE		2		
54401G	VANE,GX,2ND STAGE				2
87996G	VANE,GX,2ND STAGE		2		
54451G	VANE,GX,OIL PUMP	1	1		
65514G	VANE,GX,OIL PUMP			1	1
73446	WASHER,WAVED,S.S.,M10	4	4	25	25
73460	WASHER,WAVED,S.S.,M6	21	21	21	21
73461	WASHER,WAVED,S.S.,M8	23	23	2	2

KITS

KIT BILL OF MATERIALS CAN BE FOUND LISTED ON THE 'KIT COMPONENTS' PAGES IMMEDIATELY FOLLOWING CORRESPONDING PUMP PAGES.

MINOR KITS

MINOR KITS INCLUDE COUPLING ELEMENT, C-CLIPS, O-RINGS, GASKETS, VALVES, WASHERS, SHAFT SEALS & OTHER COMPONENTS FOR LIGHT OVERHAUL.

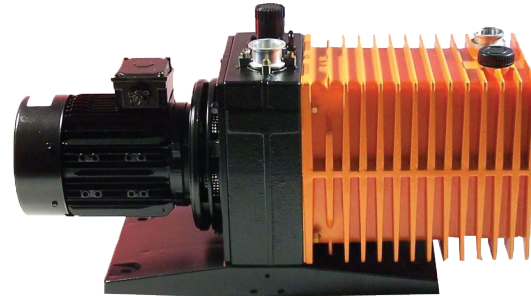
MODEL(S)	PART NUMBER
SD 700	54285
SD 1400	54485



MAJOR KITS

MAJOR KITS INCLUDE ALL COMPONENTS OF MINOR KITS PLUS VANES, SPRINGS, SIGHT GLASS & DRAIN PLUG FOR MAJOR PUMP OVERHAUL.

MODEL(S)		PART NUMBER
SD 700	(GX VANES)	54288KIT
SD 1400	(GX VANES)	54487KIT



FEATURED SPARES

ALL AVAILABLE SPARES FOR THIS SERIES CAN BE FOUND LISTED ON THE 'INDIVIDUAL SPARES' PAGES AT THE END OF THIS SECTION.

ROTORS

MODEL(S)		PART NUMBER
SD 700	(1ST-LP STAGE)	54124
SD 1400	(1ST-LP STAGE)	54425
SD 700	(2ND-HP STAGE)	54183
SD 1400	(2ND-HP STAGE)	54433

STATORS

MODEL(S)		PART NUMBER
SD 700	(1ST-LP STAGE)	54120
SD 1400	(1ST-LP STAGE)	54411
SD 700	(2ND-HP STAGE)	54122
SD 1400	(2ND-HP STAGE)	54415

PLATES

MODEL(S)		PART NUMBER
SD 700	(INTER-BRONZE)	54121
SD 700	(INTER-CARBON)	54190
SD 700	(REAR-BRONZE)	54250
SD 700	(REAR-CARBON)	54251
SD 1400	(INTER-BRONZE)	54413
SD 1400	(INTER-CARBON)	54434
SD 1400	(REAR-BRONZE)	65505
SD 1400	(REAR-CARBON)	65506

SHAFT SEALS

MODEL(S)		PART NUMBER
ALL	(BUNA)	79100
ALL	(VITON)	79101

RECOMMENDED OILS

TYPE	PART NUMBER
PLUS 19 (1L/1.06QT) GENERAL PURPOSE	PP19001
PLUS GOLD (1L/1.06QT) FULLY SYNTHETIC	PPGOLD001
PLUS FF (1L/1.06QT) FLUSHING FLUID	PPFF001



KIT COMPONENTS

PART NUMBER	ITEM DESCRIPTION	SD700	SD700	SD1400	SD1400
		MINOR 54285	MAJOR 54288KIT	MINOR 54485	MAJOR 54487KIT
65079	ASSY,SIGHT GLASS,2033/2063CP+	1	1	1	1
820048	BOX,WHITE,14.5 X 10.5 X 2.5"			1	1
76261C	C-CLIP,2033/63	1	1	1	1
71188	C-CLIP,2033/63C	2	2	2	2
54224	CLAPPER,2033/63	1	1	1	1
54091	COUPLER,ELSTC,BLUE,2030-2033C	1	1		
54356	COUPLING,ELASTIC,2060/63C			1	1
54128	GASKET,CASE,2033C	1	1		
54427	GASKET,CASE,2063C			1	1
103306	GASKET,SIGHT GLASS	1	1	1	1
54196	MEMBRANE,OIL PUMP	1	1	1	1
71338	NUT	1	1	1	1
82109	O'RING,BUNA,10.77 X 2.62 MM	1	1	2	2
79010	O'RING,BUNA,128 X 2 MM	4	4		
79241	O'RING,BUNA,148 X 2 MM			4	4
82112	O'RING,BUNA,15.54 X 2.62 MM	1	1	1	1
84149	O'RING,BUNA,16 X 2 MM	1	1	1	1
82122	O'RING,BUNA,29.3 X 3.6 MM	1	1	1	1
83633	O'RING,BUNA,38 X 2.5 MM	1	1	1	1
82129	O'RING,BUNA,40.64 X 5.33 MM	1	1	1	1
79051	O'RING,BUNA,41 X 3 MM	1	1	1	1
87926	O'RING,BUNA,44 X 3 MM	1	1	1	1
79234	O'RING,BUNA,8 X 2 MM	2	2	2	2
82108	O'RING,BUNA,9.19 X 2.62 MM	1	1	1	1
82024	O'RING,VITON,12.37 X 2.62 MM	4	4	4	4
320067	O'RING,VITON,63.09 X 3.53 MM	1	1	1	1
65538	PAD,FELT			1	1
65059	PAD,FELT,2033-2033CP+	1	1		
76261	PIN,COTTER,2033/63	1	1	1	1
82604	PLUG,DRAIN,PLASTIC,2004A-2063C	1	1	1	1
82925	PLUG,FILL,2033-2063C	1	1	1	1
75024	SCREW,SOCKET HEAD CAP,YLW CH	1	1	1	1
79100	SEAL,SHAFT,BUNA	3	3	3	3
79101	SEAL,SHAFT,VITON	1	1	1	1
76135	SIGHT GLASS, WINDOW,W/SEAL	1	1	1	1
105452R	SIGHT GLASS,OIL,PLASTIC	1	1	1	1
54145	SPRING	1	1	1	1
54149	SPRING	1	1	1	1
54114	SPRING,GAS BALLAST	1	1	1	1
87954	SPRING,VALVE	3	3	3	3
87942	SPRING,VANE		9		9
53443	VALVE,DISCHRG,VITON 2033/63C	3	3	3	3
54134	VALVE,EXHAUST,2033/63C	1	1	1	1
54400G	VANE,GX,1ST STAGE				2
87941G	VANE,GX,1ST STAGE		2		
54401G	VANE,GX,2ND STAGE				2
87996G	VANE,GX,2ND STAGE		2		
54451G	VANE,GX,OIL PUMP	1	1		
65514G	VANE,GX,OIL PUMP			1	1
73446	WASHER,WAVED,S.S.,M10	4	4	25	25
73460	WASHER,WAVED,S.S.,M6	16	16	16	16
73461	WASHER,WAVED,S.S.,M8	23	23	2	2

INDIVIDUAL SPARES

BEARINGS

4718001	BEARING,BALL,PFPE	300,600
4718005	BEARING,BALL,2 SEALS,PFPE	300,600
4818002	BEARING,BALL,PFPE	300,600
4818003	BEARING,BALL,7205W,KRYTOX 3	00,600

GASKETS

300053	GASKET,CORK,1MM THICK	D05
300054	GASKET,CORK,1MM THICK	D05
300055	GASKET,CORK,1.5MM THICK	D05,D08,D12

KITS

SH0100TS	KIT,TIPSEAL,REPLACEMENT,SH100/110	SH110
TSS0300MK	KIT,MAJOR MAINTENANCE,TS300	300
TSS0300TS	KIT,TIP SEAL,TS300	300
TSS0600MK	KIT,MAJOR MAINTENANCE, TS600	600
TSS0600TS	KIT,TIP SEAL, TRISCRROLL 600	600

MISC.

350010	ASSEMBLY,SYNC CRANK PIN	TS300
350011	ASSEMBLY,SYNC CRANK,600	TS600
540002	SLEEVE,NYLON	300,600
720018	PAD,FELT	D08,D12
860012	THREADLOCK,LOCTITE 242, .5ML	300
860013	THREADLOCK,LOCTITE 567,6ML	300

O-RINGS

320130	O'RING,BUNA,41.0 X 1.78MM	SV585
320159	O'RING,VITON,221.85 X 3.53	300
320167	O'RING,VITON,247.25 X 3.53 MM	
320168	O'RING,VITON,36.17 X 2.62 MM	600
320169	O'RING,VITON,113.97 X 2.62 MM	300
320170	O'RING,VITON,10.69 X 3.53 MM	300
320171	O'RING,VITON,13.87 X 3.53 MM	600
320216	O'RING,VITON,75.79X3.53 MM	S400F,S400FL
320269	ORING,VITON,1MM X 3MM	D08,D12

OIL/GREASES

870013	GREASE,KRYTOX,GPL-224, .5 OZ	
--------	------------------------------	--

RINGS

470017	RING,RETAINING,18MM	300
470018	RING,RETAINING,15MM	300

SEALS

300056	SEAL, TIP, VARIAN	300
310057	SEAL,SHAFT,BUNA,32X42X4MM	300,600
310058	SEAL,SHAFT, 8 X 15 X 3,BUNA TYPE KB	300,600
310059	SEAL,SHAFT,24X32X4	300
310060	SEAL,SHAFT,22 X 30 X 4	600

SPRINGS

490053	SPRING, COMPRESSION, STAINLESS	300
--------	--------------------------------	-----