

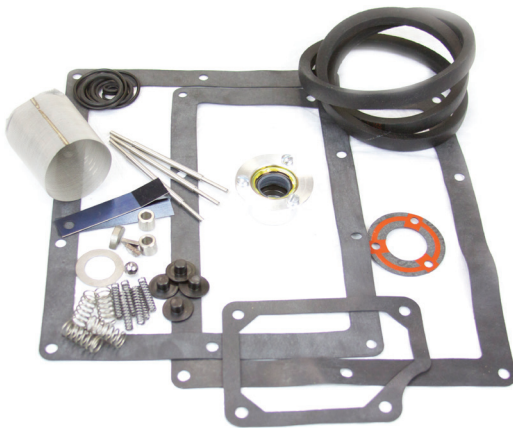
KITS

KIT BILL OF MATERIALS CAN BE FOUND LISTED ON THE 'KIT COMPONENTS' PAGES IMMEDIATELY FOLLOWING CORRESPONDING PUMP PAGES.

MINOR REPAIR KITS

MINOR REPAIR KITS INCLUDE O-RINGS, GASKETS, MECHANICAL SHAFT SEALS, VALVES & OTHER COMPONENTS FOR LIGHT OVERHAUL.

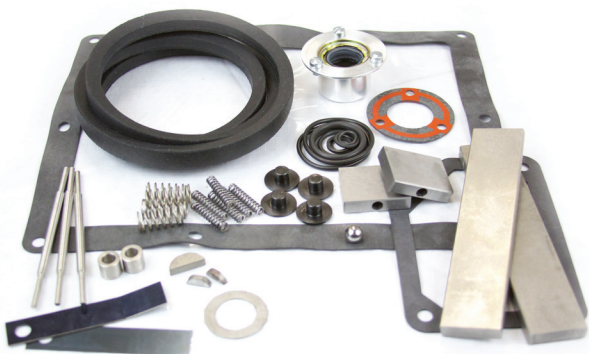
MODEL(S)	PART NUMBER
1376 N	1376K-09
1400 N	1400K-09
1402 N	1402K-09



MAJOR REPAIR KITS

MAJOR KITS INCLUDE ALL COMPONENTS OF MINOR KITS PLUS CAST IRON VANES, V-BELTS, & OTHER COMPONENTS FOR MAJOR OVERHAUL.

MODEL(S)	PART NUMBER
1376 N	1376K-10
1400 N	1400K-10
1402 N	1402K-10



FEATURED SPARES

ALL AVAILABLE SPARES FOR THIS SERIES CAN BE FOUND LISTED ON THE 'INDIVIDUAL SPARES' PAGES AT THE END OF THIS SECTION.

MECHANICAL SHAFT SEALS

MODEL(S)	PART NUMBER
1376 N	411401D
1400 N	411401E
1402 N	411401D



CAST IRON VANES

MODEL(S)	PART NUMBER
1376 N (LARGE / 2)	411684
1376 N (SMALL / 2)	411487
1400 N (4 REQUIRED)	411059IRON
1402 N (LARGE / 2)	410959
1402 N (SMALL / 2)	411487



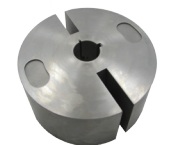
SHAFTS

MODEL(S)	PART NUMBER
1376 N	411683
1400 N	411060
1402 N	412093



ROTORS

MODEL(S)	PART NUMBER
1376 N, 1402 N (INTAKE)	411518
1402 N (EXHAUST)	412092



RECOMMENDED OILS

TYPE	PART NUMBER
PLUS DUO (1L/1.06QT) GENERAL PURPOSE OIL (EQU. TO DUOSEAL)	PPD001
PLUS GOLD (1L/1.06QT) FULLY SYNTHETIC OIL	PPGOLD001
PLUS FF (1L/1.06QT) FLUSHING FLUID	PPFF001



KIT COMPONENTS

PART NUMBER	ITEM DESCRIPTION	1376N MINOR 1376K-09	1376N MAJOR 1376K-10	1400N MINOR 1400K-09	1400N MAJOR 1400K-10	1402N MINOR 1402K-09	1402N MAJOR 1402K-10
4401200	BALL,STEEL	1	1			1	1
410660	FILTER					1	1
410890	FILTER,AIR			1	1		
411692	FILTER,AIR	1	1				
410383	GASKET,INTAKE COVER			1	1		
618278A	GASKET,INTAKE COVER,VITON	1	1			1	1
618279B	GASKET,OIL CASE,VITON	2	2			1	1
618355B	GASKET,OIL CASE,VITON			1	1		
410643	GASKET,SHAFT SEAL	1	1	1	1	1	1
410696	HOLDER,SPRING	3	3			1	1
411063	HOLDER,SPRING			2	2		
410613	KEY,WOODRUFF,CUT	2	2	2	2	2	2
410624	KEY,WOODRUFF,CUT	1	1	1	1	2	2
660304	O'RING,AFLAS,36.17 X 2.62 MM	2	2			2	2
40015	O'RING,BUNA,7.65 X 1.78 MM	1	1	1	1	1	1
620118	O'RING,SHAPED,#013	2	2	2	2	2	2
79135	O'RING,VITON,10.5 X 2 MM	1	1	1	1	1	1
612159A	O'RING,VITON,18.72 X 2.62 MM	1	1	1	1	1	1
619284A	O'RING,VITON,24.99 X 3.53 MM	2	2			2	2
320106	O'RING,VITON,25.07 X 2.62 MM			1	1		
619378	O'RING,VITON,82.22 X 2.62 MM			1	1		
320083	O'RING,VITON,86 X 2.5 MM			1	1		
618559A	PIN,SPRING,VANE	6	6	4	4	6	6
4060754	RING					1	1
411150	RING,RETAINING			1	1		
410578	SEAL,SHAFT (METAL CASE)			1	1		
1401E	SEAL,SHAFT,MECH,W/SCREWS,.625"			1	1		
1401D	SEAL,SHAFT,MECH,W/SCREWS,.750"	1	1			1	1
618315A	SPACER,BLOCK,VALVE	2	2			1	1
411685	SPRING,HOLDER,CORROSION RESIS					2	2
412158	SPRING,VALVE	4	4			2	2
618348A	STUD,BAFFLE			1	1		
410708	V-BELT			1	1		
410710	V-BELT	1	1			1	1
618314A	VALVE	4	4			2	2
411239	VALVE,EXHAUST			1	1		
412154	VALVE,LOWER EXHAUST,STEEL	1	1			1	1
410992	VALVE,PRESSURE RELIEF					1	1
412153	VALVE,UPPER EXHAUST,STEEL	1	1			1	1
411059IRON	VANE,CAST IRON,1ST STAGE				4		
411684	VANE,CAST IRON,1ST STAGE		2				
410959	VANE,CAST IRON,1ST STAGE,LARGE						2
411487	VANE,CAST IRON,2ND STAGE,SMALL		2				2
2710040	WASHER,BRASS,#10			2	2		
618456A	WASHER,COPPER,5/16"					6	6
411766	WASHER,DISK					3	3
410508	WASHER,THRUST	1	1			1	1

KITS

KIT BILL OF MATERIALS CAN BE FOUND LISTED ON THE 'KIT COMPONENTS' PAGES IMMEDIATELY FOLLOWING CORRESPONDING PUMP PAGES.

GASKET KITS

GASKET KITS INCLUDE GASKETS, WASHERS & VITON SHAFT SEALS AS NOTED.

MODEL(S)		PART NUMBER
1400	(LIP)	1400G
1400	(MECHANICAL)	1400G/MS
1402	(LIP)	1402G
1402	(MECHANICAL)	1402G/MS
1405	(LIP)	1405G
1405	(MECHANICAL)	1405G/MS

SECONDARY KITS

SECONDARY KITS INCLUDE ALL COMPONENTS OF GASKET KITS PLUS V-BELTS, EXHAUST VALVES & SPRINGS FOR LIGHT OVERHAUL.

MODEL(S)		PART NUMBER
1400	(LIP)	1400S
1400	(MECHANICAL)	1400S/MS
1402	(LIP)	1402S
1402	(MECHANICAL)	1402S/MS
1405	(LIP)	1405S
1405	(MECHANICAL)	1405S/MS

PRIMARY KITS

PRIMARY KITS INCLUDE ALL COMPONENTS OF SECONDARY KITS PLUS VANES (CAST IRON-PI OR PHENOLIC-PP) FOR MAJOR OVERHAUL.

MODEL(S)		PART NUMBER
1400	(LIP - CAST IRON VANES)	1400PI
1400	(MECHANICAL - CAST IRON VANES)	1400PI/MS
1400	(LIP - PHENOLIC VANES)	1400PP
1400	(MECHANICAL - PHENOLIC VANES)	1400PP/MS
1402	(LIP - CAST IRON VANES)	1402PI
1402	(MECHANICAL - CAST IRON VANES)	1402PI/MS
1402	(LIP - PHENOLIC VANES)	1402PP
1402	(MECHANICAL - PHENOLIC VANES)	1402PP/MS
1405	(LIP - CAST IRON VANES)	1405PI
1405	(MECHANICAL - CAST IRON VANES)	1405PI/MS
1405	(LIP - PHENOLIC VANES)	1405PP
1405	(MECHANICAL - PHENOLIC VANES)	1405PP/MS



FEATURED SPARES

ALL AVAILABLE SPARES FOR THIS SERIES CAN BE FOUND LISTED ON THE 'INDIVIDUAL SPARES' PAGES AT THE END OF THIS SECTION.

VANES

MODEL(S)		PART NUMBER
1400	(1ST-PHENOLIC)	411059
1400	(1ST-PHENOLIC)	411059
1400	(1ST-CAST IRON)	411059IRON
1400	(2ND-CAST IRON)	411059IRON
1402	(1ST-PHENOLIC)	412036
1402	(2ND-PHENOLIC)	412035
1402	(1ST-CAST IRON)	410959
1402	(2ND-CAST IRON)	411487
1405	(1ST-PHENOLIC)	411294PH
1405	(1ST-CAST IRON)	411294IRON



SHAFTS

MODEL(S)	PART NUMBER
1400	411060
1402	412093
1405	411293



ROTORS

MODEL(S)	PART NUMBER
1402 (INTAKE)	412092
1402 (EXHAUST)	411518



RECOMMENDED OILS

TYPE	PART NUMBER
PLUS DUO (1L/1.06QT) GENERAL PURPOSE OIL (EQU. TO DUOSEAL)	PPD001
PLUS GOLD (1L/1.06QT) FULLY SYNTHETIC OIL	PPGOLD001
PLUS FF (1L/1.06QT) FLUSHING FLUID	PPFF001



KIT COMPONENTS

PART NUMBER	ITEM DESCRIPTION	1400	1400	1400	1400	1400	1400	1400
		GASKET 1400G	GASKET 1400G/MS	SECONDARY 1400S	SECONDARY 1400S/MS	PRIMARY 1400PI	PRIMARY 1400PI/MS	PRIMARY 1400PP
411052	GASKET,CASE	1	1	1	1	1	1	1
410383	GASKET,INTAKE COVER	1	1	1	1	1	1	1
410056	GASKET,SEAL	1	1	1	1	1	1	1
410643	GASKET,SHAFT SEAL				1			
411063	HOLDER,SPRING			2	2	2	2	2
840032	INSTRUCTIONS,SHAFT SEAL,WELCH				1			
410613	KEY,WOODRUFF,CUT				2	2	2	2
410624	KEY,WOODRUFF,CUT				1	1	1	1
411401E-01	KIT,SHAFT SEAL,.625"	1		1		1		1
411401E	KIT,SHAFT SEAL,MECH.,.625"		1		1		1	1
320106	O'RING,VITON,25.07 X 2.62 MM			1	1	1	1	1
40010	O'RING,VITON,82.22 X 2.62 MM			1	1	1	1	1
320083	O'RING,VITON,86 X 2.5 MM			1	1	1	1	1
411150	RING,RETAINING			1	1	1	1	1
410578	SEAL,SHAFT (METAL CASE)	1	1	1	1	1	1	1
411304	SPRING,SS			4	4	4	4	4
410708	V-BELT			1	1	1	1	1
411239	VALVE,EXHAUST			1	1	1	1	1
411059IRON	VANE,CAST IRON,1ST STAGE					4	4	
411059	VANE,PHENOLIC,1ST STAGE						4	4
411056	WASHER,ALUM				8	8	8	8
411137	WASHER,ALUMINA				3	3	3	3
411267	WASHER,RUBBER	1	1	1	1	1	1	1
411266	WASHER,TENSION	1	1	1	1	1	1	1

PART NUMBER	ITEM DESCRIPTION	1402	1402	1402	1402	1402	1402	1402
		GASKET 1402G	GASKET 1402G/MS	SECONDARY 1402S	SECONDARY 1402S/MS	PRIMARY 1402PI	PRIMARY 1402PI/MS	PRIMARY 1402PP
4401200	BALL,STEEL			1	1	1	1	1
410660	FILTER						1	
410234	GASKET,1376,1380,1402	1	1	1	1	1	1	1
412291	GASKET,1376,1402	1	1	1	1	1	1	1
410403	GASKET,CASE,FOAM RUBBER	1	1	1	1	1	1	1
410643	GASKET,SHAFT SEAL		1		1		1	1
410696	HOLDER,SPRING			3	3	3	3	3
840032	INSTRUCTIONS,SHAFT SEAL,WELCH		1		1		1	1
410613	KEY,WOODRUFF,CUT					2	2	2
410624	KEY,WOODRUFF,CUT					2	2	2
411401D-01	KIT,SHAFT SEAL,.750"	1		1		1		1
40015	O'RING,BUNA,7.65 X 1.78 MM						1	
619284A	O'RING,VITON,24.99 X 3.53 MM						1	
4060754	RING						1	
410578	SEAL,SHAFT (METAL CASE)	1	1	1	1	1	1	1
1401D	SEAL,SHAFT,MECH,W/SCREWS,.750"		1		1		1	1
411685	SPRING,HOLDER,CORROSION RESIS						2	
411304	SPRING,SS			6	6	6	6	6
412158	SPRING,VALVE			2	2	2	2	2
410710	V-BELT			1	1	1	1	1
618314A	VALVE						2	
412159	VALVE,BLOCK SPACER						1	
412154	VALVE,LOWER EXHAUST,STEEL			1	1	1	1	1
410992	VALVE,PRESSURE RELIEF			1	1	1	1	1
412153	VALVE,UPPER EXHAUST,STEEL			1	1	1	1	1
410959	VANE,CAST IRON,1ST STAGE,LARGE					2	2	
411487	VANE,CAST IRON,2ND STAGE,SMALL					2	2	
412036	VANE,PHENOLIC,1ST STG,LARGE						2	2
412035	VANE,PHENOLIC,2ND STG,SMALL						2	2
618456A	WASHER,COPPER,5/16"						6	
411766	WASHER,DISK					3	3	3
411267	WASHER,RUBBER	2	2	2	2	2	2	2
411266	WASHER,TENSION	2	2	2	2	2	2	2
410508	WASHER,THRUST					1	1	1

KIT COMPONENTS

PART NUMBER	ITEM DESCRIPTION	1405	1405	1405	1405	1405	1405	1405	1405
		GASKET 1405G	GASKET 1405G/MS	SECONDARY 1405S	SECONDARY 1405S/MS	PRIMARY 1405PI	PRIMARY 1405PI/MS	PRIMARY 1405PP	PRIMARY 1405PP/MS
820048	BOX,WHITE,14.5 X 10.5 X 2.5"				1				
411178	GASKET,CENTER PLATE COVER	1	1	1	1	1	1	1	1
411308	GASKET,CHAMBER	2	2	2	2	2	2	2	2
411303	HOLDER,SPRING			2	2	2	2	2	2
410613	KEY,WOODRUFF,CUT					2	2	2	2
410624	KEY,WOODRUFF,CUT					2	2	2	2
411401E-01	KIT,SHAFT SEAL,.625"	1		1		1		1	
411401E	KIT,SHAFT SEAL,MECH.,.625"		1		1		1		1
411150	RING,RETAINING			1	1	1	1	1	1
411304	SPRING,SS			4	4	4	4	4	4
410710	V-BELT			1	1	1	1	1	1
411239	VALVE,EXHAUST			1	1	1	1	1	1
411294IRON	VANE,CAST IRON,2ND STAGE					4	4		
411294PH	VANE,PHENOLIC,2ND STG							4	4
411165	WASHER	2	2	2	2	2	2	2	2
411267	WASHER,RUBBER	2	2	2	2	2	2	2	2
411266	WASHER,TENSION	2	2	2	2	2	2	2	2

KITS

KIT BILL OF MATERIALS CAN BE FOUND LISTED ON THE 'KIT COMPONENTS' PAGES IMMEDIATELY FOLLOWING CORRESPONDING PUMP PAGES.

GASKET KITS

GASKET KITS INCLUDE GASKETS, WASHERS & VITON SHAFT SEALS AS NOTED.

MODEL(S)		PART NUMBER
1373	(LIP)	1373G
1373	(MECHANICAL)	1373G/MS
1374	(LIP)	1374G
1374	(MECHANICAL)	1374G/MS
1376	(LIP)	1376G
1376	(MECHANICAL)	1376G/MS

SECONDARY KITS

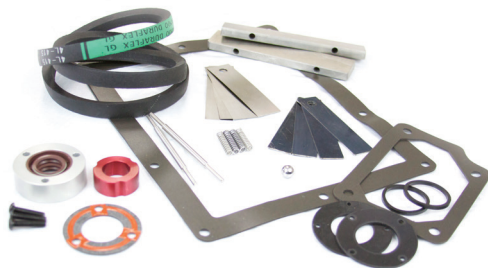
SECONDARY KITS INCLUDE ALL COMPONENTS OF GASKET KITS PLUS V-BELTS, EXHAUST VALVES & SPRINGS FOR LIGHT OVERHAUL.

MODEL(S)		PART NUMBER
1373	(LIP)	1373S
1373	(MECHANICAL)	1373S/MS
1374	(LIP)	1374S
1374	(MECHANICAL)	1374S/MS
1376	(LIP)	1376S
1376	(MECHANICAL)	1376S/MS

PRIMARY KITS

PRIMARY KITS INCLUDE ALL COMPONENTS OF SECONDARY KITS PLUS VANES (CAST IRON-PI OR PHENOLIC-PP) FOR MAJOR OVERHAUL.

MODEL(S)		PART NUMBER
1373	(LIP - CAST IRON VANES)	1373PI
1373	(MECHANICAL - CAST IRON VANES)	1373PI/MS
1373	(LIP - PHENOLIC VANES)	1373PP
1373	(MECHANICAL - PHENOLIC VANES)	1373PP/MS
1374	(LIP - CAST IRON VANES)	1374PI
1374	(MECHANICAL - CAST IRON VANES)	1374PI/MS
1374	(LIP - PHENOLIC VANES)	1374PP
1374	(MECHANICAL - PHENOLIC VANES)	1374PP/MS
1376	(LIP - CAST IRON VANES)	1376PI
1376	(MECHANICAL - CAST IRON VANES)	1376PI/MS
1376	(LIP - PHENOLIC VANES)	1376PP
1376	(MECHANICAL - PHENOLIC VANES)	1376PP/MS



FEATURED SPARES

ALL AVAILABLE SPARES FOR THIS SERIES CAN BE FOUND LISTED ON THE 'INDIVIDUAL SPARES' PAGES AT THE END OF THIS SECTION.

VANES

MODEL(S)		PART NUMBER
1373	(1ST-PHENOLIC)	411748
1374	(1ST-PHENOLIC)	411462
1374	(2ND-PHENOLIC)	412035
1376	(1ST-CAST IRON)	411684
1376	(1ST-PHENOLIC)	411748
1376	(2ND-CAST IRON)	411487
1376	(2ND-PHENOLIC)	412035



SHAFTS

MODEL(S)		PART NUMBER
1374		411484
1376		411683



ROTORS

MODEL(S)		PART NUMBER
1376	(EXHAUST)	411518
1374	(EXHAUST)	411499



RINGS (STATOR)

MODEL(S)		PART NUMBER
1376	(EXHAUST RING)	412039
1397	(EXHAUST RING)	411497



RECOMMENDED OILS

TYPE	PART NUMBER
PLUS DUO (1L/1.06QT) GENERAL PURPOSE OIL (EQU. TO DUOSEAL)	PPD001
PLUS GOLD (1L/1.06QT) FULLY SYNTHETIC OIL	PPGOLD001
PLUS FF (1L/1.06QT) FLUSHING FLUID	PPFF001



KIT COMPONENTS

PART NUMBER	ITEM DESCRIPTION	1373	1373	1373	1373	1373	1373	1373
		GASKET 1373G	GASKET 1373G/MS	SECONDARY 1373S	SECONDARY 1373S/MS	PRIMARY 1373PI	PRIMARY 1373PI/MS	PRIMARY 1373PP
4401200	BALL,STEEL			1	1	1	1	1
410234	GASKET,1376,1380,1402	1	1	1	1	1	1	1
410403	GASKET,CASE,FOAM RUBBER	1	1	1	1	1	1	1
410643	GASKET,SHAFT SEAL		1		1		1	1
410696	HOLDER,SPRING			2	2	2	2	2
840032	INSTRUCTIONS,SHAFT SEAL,WELCH		1		1		1	1
411401D-01	KIT,SHAFT SEAL,.750"	1		1		1		1
1401D	SEAL,SHAFT,MECH,W/SCREWS,.750"		1		1		1	1
411304	SPRING,SS			4	4	4	4	4
410710	V-BELT			1	1	1	1	1
411768	VALVE,LOWER EX,STAINLESS STL.			4	4	4	4	4
411779	VALVE,UPPER EXHAUST			4	4	4	4	4
411684	VANE,CAST IRON,1ST STAGE					2	2	
411748	VANE,PHENOLIC,1ST STG,LARGE							2
411267	WASHER,RUBBER	2	2	2	2	2	2	2
411266	WASHER,TENSION	2	2	2	2	2	2	2

PART NUMBER	ITEM DESCRIPTION	1374	1374	1374	1374	1374	1374	1374
		GASKET 1374G	GASKET 1374G/MS	SECONDARY 1374S	SECONDARY 1374S/MS	PRIMARY 1374PI	PRIMARY 1374PI/MS	PRIMARY 1374PP
4401200	BALL,STEEL			1		1		1
411496	GASKET,CASE	1	1	1	1	1	1	1
411495	GASKET,INTAKE COVER	1	1	1	1	1	1	1
411494	GASKET,SEAL			1				
411508	GASKET,VALVE	1	1	1	1	1	1	1
410696	HOLDER,SPRING			1	1	1	1	1
411489	HOLDER,SPRING			2	2	2	2	2
670520A	INSTRUCTIONS,REPLACEMENT			1		1		1
411516	KEY,SMALL ROTOR,1374 & 1397					1		1
411490	KEY,WOODRUFF,CUT					2		2
411401F-01	KIT,SHAFT SEAL,1.00"	1		1		1		1
411401F	KIT,SHAFT SEAL,MECH.,1.00"		1		1		1	1
411507	O'RING,BUNA,78.97 X 3.53 MM	1	1	1	1	1	1	1
412258	SLEEVE			1		1		1
412257	SLEEVE,HARDENED			1		1		1
410055	SPACER					1		1
412256	SPRING,COIL			1		1		1
412259	SPRING,COIL			1		1		1
411488	SPRING,COMPRESSION,S/S			4	4	4	4	4
411304	SPRING,SS			2	2	2	2	2
410716	V-BELT			2	2	2	2	2
618538A	VALVE,BACKER			1		1		1
618539A	VALVE,FLAPPER			1		1		1
410992	VALVE,PRESSURE RELIEF			1		1		1
412161	VALVE,PRESSURE RELIEF,STEEL			1	1	1	1	1
411477	VANE,CAST IRON,1ST STAGE					2	2	
411487	VANE,CAST IRON,2ND STAGE,SMALL					2	2	
411462	VANE,PHENOLIC,1ST STAGE							2
412035	VANE,PHENOLIC,2ND STG,SMALL							2
411056	WASHER,ALUM					4		4
411137	WASHER,ALUMINA			3		3		3
411267	WASHER,RUBBER	2	2	2	2	2	2	2
411266	WASHER,TENSION	2	2	2	2	2	2	2

KIT COMPONENTS

PART NUMBER	ITEM DESCRIPTION	1376	1376	1376	1376	1376	1376	1376
		GASKET 1376G	GASKET 1376G/MS	SECONDARY 1376S	SECONDARY 1376S/MS	PRIMARY 1376PI	PRIMARY 1376PI/MS	PRIMARY 1376PP
4401200	BALL,STEEL			1	1	1	1	1
820048	BOX,WHITE,14.5 X 10.5 X 2.5"			1				
410234	GASKET,1376,1380,1402	1	1	1	1	1	1	1
412291	GASKET,1376,1402	1	1	1	1	1	1	1
410403	GASKET,CASE,FOAM RUBBER	2	2	2	2	2	2	2
410643	GASKET,SHAFT SEAL		1		1		1	1
410696	HOLDER,SPRING			3	3	3	3	3
840032	INSTRUCTIONS,SHAFT SEAL,WELCH		1		1		1	1
410613	KEY,WOODRUFF,CUT					2	2	2
410624	KEY,WOODRUFF,CUT					1	1	1
411401D-01	KIT,SHAFT SEAL,.750"	1		1		1		1
410578	SEAL,SHAFT (METAL CASE)	1	1	1	1	1	1	1
1401D	SEAL,SHAFT,MECH,W/SCREWS,.750"		1		1		1	1
411304	SPRING,SS			6	6	6	6	6
412158	SPRING,VALVE			4	4	4	4	4
410710	V-BELT			1	1	1	1	1
412154	VALVE,LOWER EXHAUST,STEEL			1	1	1	1	1
410992	VALVE,PRESSURE RELIEF			1	1	1	1	1
412153	VALVE,UPPER EXHAUST,STEEL			1	1	1	1	1
411684	VANE,CAST IRON,1ST STAGE					2	2	
411487	VANE,CAST IRON,2ND STAGE,SMALL					2	2	
411748	VANE,PHENOLIC,1ST STG,LARGE							2
412035	VANE,PHENOLIC,2ND STG,SMALL							2
411766	WASHER,DISK					3	3	3
411267	WASHER,RUBBER	2	2	2	2	2	2	2
411266	WASHER,TENSION	2	2	2	2	2	2	2
410508	WASHER,THRUST					1	1	1

KITS

KIT BILL OF MATERIALS CAN BE FOUND LISTED ON THE 'KIT COMPONENTS' PAGES IMMEDIATELY FOLLOWING CORRESPONDING PUMP PAGES.

GASKET KITS

GASKET KITS INCLUDE GASKETS, WASHERS & VITON SHAFT SEALS AS NOTED.

MODEL(S)		PART NUMBER
1397	(LIP)	1397G
1397	(MECHANICAL)	1397G/MS
1398	(MECHANICAL)	1398G/MS
1399	(LIP)	1399G
1399	(MECHANICAL)	1399G/MS

SECONDARY KITS

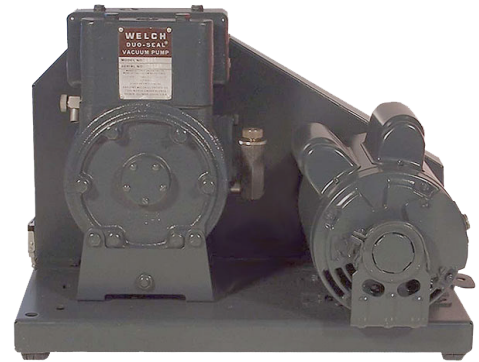
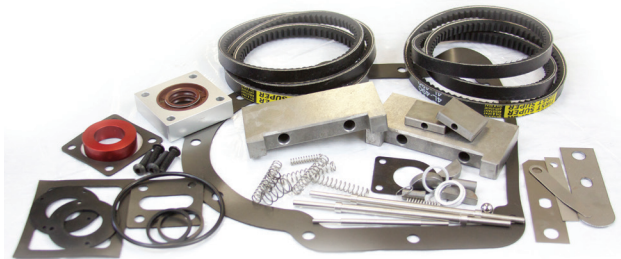
SECONDARY KITS INCLUDE ALL COMPONENTS OF GASKET KITS PLUS V-BELTS, EXHAUST VALVES & SPRINGS FOR LIGHT OVERHAUL.

MODEL(S)		PART NUMBER
1397	(LIP)	1397S
1397	(MECHANICAL)	1397S/MS
1398	(MECHANICAL)	1398S/MS
1399	(LIP)	1399S
1399	(MECHANICAL)	1399S/MS

PRIMARY KITS

PRIMARY KITS INCLUDE ALL COMPONENTS OF SECONDARY KITS PLUS VANES (CAST IRON-PI OR PHENOLIC-PP) FOR MAJOR OVERHAUL.

MODEL(S)		PART NUMBER
1397	(LIP - CAST IRON VANES)	1397PI
1397	(MECHANICAL - CAST IRON VANES)	1397PI/MS
1397	(LIP - PHENOLIC VANES)	1397PP
1397	(MECHANICAL - PHENOLIC VANES)	1397PP/MS
1398	(MECHANICAL - CAST IRON VANES)	1398PI/MS
1398	(MECHANICAL - PHENOLIC VANES)	1398PP/MS
1399	(LIP - CAST IRON VANES)	1399PI
1399	(MECHANICAL - PHENOLIC VANES)	1399PI/MS
1399	(LIP - PHENOLIC VANES)	1399PP
1399	(MECHANICAL - PHENOLIC VANES)	1399PP/MS



FEATURED SPARES

ALL AVAILABLE SPARES FOR THIS SERIES CAN BE FOUND LISTED ON THE 'INDIVIDUAL SPARES' PAGES AT THE END OF THIS SECTION.

VANES

MODEL(S)		PART NUMBER
1398	(1ST-PHENOLIC)	412383
1398	(2ND-PHENOLIC)	412380
1398	(1ST-CAST IRON)	412406
1398	(2ND-CAST IRON)	412392
1399	(1ST-CAST IRON)	411059IRON
1399	(1ST-PHENOLIC)	411059
1397	(1ST-CAST IRON)	411477
1397	(2ND-CAST IRON)	411487
1397	(1ST-PHENOLIC)	411462
1397	(2ND-PHENOLIC)	412035



ROTORS

MODEL(S)		PART NUMBER
1397	(EXHAUST)	411499



RINGS (STATOR)

MODEL(S)		PART NUMBER
1397	(EXHAUST RING)	411497



SHAFTS

MODEL(S)		PART NUMBER
1397	(NO COLLAR)	411484
1399		412374



RECOMMENDED OILS

TYPE	PART NUMBER
PLUS DUO (1L/1.06QT) GENERAL PURPOSE OIL (EQU. TO DUOSEAL)	PPD001
PLUS GOLD (1L/1.06QT) FULLY SYNTHETIC OIL	PPGOLD001
PLUS FF (1L/1.06QT) FLUSHING FLUID	PPFF001



KIT COMPONENTS

PART NUMBER	ITEM DESCRIPTION	1397	1397	1397	1397	1397	1397	1397
		GASKET 1397G	GASKET 1397G/MS	SECONDARY 1397S	SECONDARY 1397S/MS	PRIMARY 1397PI	PRIMARY 1397PI/MS	PRIMARY 1397PP
4401200	BALL,STEEL			1	1	1	1	1
411496	GASKET,CASE	1	1	1	1	1	1	1
411495	GASKET,INTAKE COVER	1	1	1	1	1	1	1
411508	GASKET,VALVE	1	1	1	1	1	1	1
410696	HOLDER,SPRING			1	1	1	1	1
411489	HOLDER,SPRING			2	2	2	2	2
670520A	INSTRUCTIONS,REPLACEMENT			1	1	1	1	1
411516	KEY,SMALL ROTOR,1374 & 1397					1	1	1
411490	KEY,WOODRUFF,CUT					2	2	2
411401F-01	KIT,SHAFT SEAL,1.00"	1		1		1		1
411401F	KIT,SHAFT SEAL,MECH.,1.00"		1		1		1	1
411507	O'RING,BUNA,78.97 X 3.53 MM	1	1	1	1	1	1	1
412258	SLEEVE			1	1	1	1	1
412257	SLEEVE,HARDENED			1	1	1	1	1
410055	SPACER					1	1	1
412256	SPRING,COIL			1	1	1	1	1
412259	SPRING,COIL			1	1	1	1	1
411488	SPRING,COMPRESSION,S/S			4	4	4	4	4
411304	SPRING,SS			2	2	2	2	2
410715	V-BELT,COGGED			2	2	2	2	2
618538A	VALVE,BACKER			1	1	1	1	1
618539A	VALVE,FLAPPER			1	1	1	1	1
410992	VALVE,PRESSURE RELIEF			1	1	1	1	1
412161	VALVE,PRESSURE RELIEF,STEEL			1	1	1	1	1
411477	VANE,CAST IRON,1ST STAGE					2	2	
411487	VANE,CAST IRON,2ND STAGE,SMALL					2	2	
411462	VANE,PHENOLIC,1ST STAGE							2
412035	VANE,PHENOLIC,2ND STG,SMALL							2
411056	WASHER,ALUM					4	4	4
411137	WASHER,ALUMINA			3	3	3	3	3
411267	WASHER,RUBBER	2	2	2	2	2	2	2
411266	WASHER,TENSION	2	2	2	2	2	2	2

KIT COMPONENTS

PART NUMBER	ITEM DESCRIPTION	1398	1398	1398	1398	1398	1398	1398
		GASKET 1398G	GASKET 1398G/MS	SECONDARY 1398S	SECONDARY 1398S/MS	PRIMARY 1398PI	PRIMARY 1398PI/MS	PRIMARY 1398PP
412491	ASSEMBLY,SEAL,SHAFT,WITH O'RING		1		1		1	1
4400800	BALL,STEEL			1	1	1	1	1
820048	BOX,WHITE,14.5 X 10.5 X 2.5"			1				
412518	GASKET,1395,1396,1398	1	1	1	1	1	1	1
412517	GASKET,INTAKE COVER	1	1	1	1	1	1	1
412482	O'RING,BUNA,113.67 X 5.33 MM	1	1	1	1	2	2	1
412487	O'RING,BUNA,18.64 X 3.53 MM	1	1	1	1	1	1	1
412488	O'RING,BUNA,28.17 X 3.53 MM	1	1	1	1	1	1	1
411507	O'RING,BUNA,78.97 X 3.53 MM	1	1	1	1	1	1	1
412515	O'RING,BUNA,85.32 X 3.53 MM	1	1	1	1	1	1	1
412481	O'RING,BUNA,91.44 X 5.33 MM	1	1	1	1	1	1	1
412491INS	SEAL,SHAFT,COMPLETE INSERT	1		1		1		1
412506	SPRING			1	1	1	1	1
412507	SPRING			4	4	4	4	4
412952	SPRING			4	4	4	4	4
411488	SPRING,COMPRESSION,S/S			2	2	2	2	2
412471	SPRING,HOLDER			2	1	1	1	1
412472	SPRING,HOLDER			2	2	2	2	2
412512	V-BELT			4	4	4	4	4
412382	VALVE,BALL			1	1	1	1	1
412406	VANE,CAST IRON,1ST STAGE,LARGE					2	2	
412392	VANE,CAST IRON,2ND STAGE,SMALL					2		
412383	VANE,PHENOLIC,1ST STG,LARGE							2
412380	VANE,PHENOLIC,2ND STG,SMALL							2
411137	WASHER,ALUMINA			4	4	4	4	4
411267	WASHER,RUBBER	2	2	2	2	2	2	2
411266	WASHER,TENSION	2	2	2	2	2	2	2

PART NUMBER	ITEM DESCRIPTION	1399	1399	1399	1399	1399	1399	1399
		GASKET 1399G	GASKET 1399G/MS	SECONDARY 1399S	SECONDARY 1399S/MS	PRIMARY 1399PI	PRIMARY 1399PI/MS	PRIMARY 1399PP
411052	GASKET,CASE	1	1	1	1	1	1	1
412375	GASKET,COVER	1	1	1	1	1	1	1
410643	GASKET,SHAFT SEAL		1					1
411063	HOLDER,SPRING			1	1	1	1	1
840032	INSTRUCTIONS,SHAFT SEAL,WELCH		1					1
411401E-01	KIT,SHAFT SEAL,.625"	1		1		1		1
411401E	KIT,SHAFT SEAL,MECH.,.625"				1		1	
1401E	SEAL,SHAFT,MECH,W/SCREWS,.625"		1					1
411304	SPRING,SS			2	2	2	2	2
410711	V-BELT			1	1	1	1	1
411239	VALVE,EXHAUST			1	1	1	1	1
411059IRON	VANE,CAST IRON,1ST STAGE					2	2	
411059	VANE,PHENOLIC,1ST STAGE							2
411137	WASHER,ALUMINA			1	1	1	1	1
411267	WASHER,RUBBER	1	1	1	1	1	1	1
411266	WASHER,TENSION	1	1	1	1	1	1	1

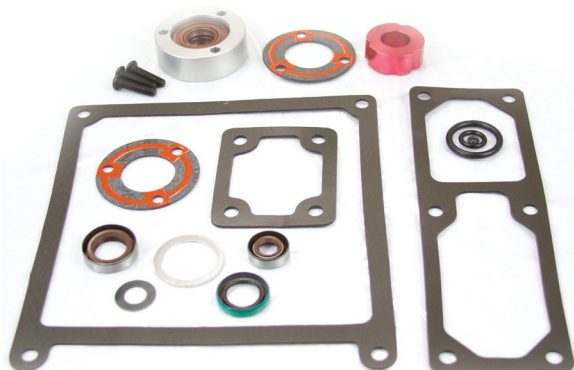
KITS

KIT BILL OF MATERIALS CAN BE FOUND LISTED ON THE 'KIT COMPONENTS' PAGES IMMEDIATELY FOLLOWING CORRESPONDING PUMP PAGES.

SEAL & GASKET KITS

SEAL & GASKET KITS INCLUDE GASKETS, WASHERS & VITON SHAFT SEALS.

MODEL(S)	PART NUMBER
ALL	8800SGK



MAJOR REPAIR KITS

MAJOR REPAIR KITS INCLUDE ALL COMPONENTS OF SEAL & GASKET KITS PLUS VANES, SPRINGS, SIGHT GLASS AND OTHER COMPONENTS FOR MAJOR OVERHAUL.

MODEL(S)	PART NUMBER
8806	8806MRK
8811	8811MRK
8814	8814MRK
8816	8816MRK
8821	8821MRK
8851	8851MRK



FEATURED SPARES

ALL AVAILABLE SPARES FOR THIS SERIES CAN BE FOUND LISTED ON THE 'INDIVIDUAL SPARES' PAGES AT THE END OF THIS SECTION.

VANES

MODEL(S)		PART NUMBER
ALL	(EXHAUST)	413327
8811/8816	(INTAKE)	413328
8814	(INTAKE)	413469
8821	(INTAKE)	413329
8851	(INTAKE)	413104



SHAFT SEALS

MODEL(S)	PART NUMBER
ALL (VITON LIP SEAL)	411401E-01



EXHAUST VALVES

MODEL(S)	PART NUMBER
8806-8814 (4IN X 4IN X 3IN ID)	1417G



RECOMMENDED OILS

TYPE	PART NUMBER
PLUS 19 (1L/1.06QT) GENERAL PURPOSE OIL	PP19001
PLUS GOLD (1L/1.06QT) FULLY SYNTHETIC OIL	PPGOLD001
PLUS FF (1L/1.06QT) FLUSHING FLUID	PPFF001



KIT COMPONENTS

PART NUMBER	ITEM DESCRIPTION	8806-51 SEAL/GASKET 8800SGK	8806 MAJOR 8806MRK	8811 MAJOR 8811MRK	8814 MAJOR 8814MRK	8816 MAJOR 8816MRK	8821 MAJOR 8821MR	8851 MAJOR 8851MRK
4400800	BALL,STEEL		1	1	1	1	1	1
413133	GASKET,CASE	1	1	1	1	1	1	1
412744	GASKET,INTAKE COVER	1	1	1	1	1	1	
413111	GASKET,INTAKE COVER	1						1
410643	GASKET,SHAFT SEAL	1	1	1	1	1	1	1
413112	GASKET,SIDE COVER							1
412969	HOLDER,SPRING		2	3	1	4	1	1
411401E-01	KIT,SHAFT SEAL,.625"	1	1	1	1	1	1	1
410929	LEGS,PUMP,BASE		4	4	4	4	4	4
412065	O'RING,BUNA,21.82 X 3.53 MM	1	1	1	1	1	1	
413727	O'RING,BUNA,40.87 X 3.53 MM							1
412642	O'RING,BUNA,9.19 X 2.62 MM	1	1	1	1	1	1	
412963	O'RING,VITON,2.57 X 1.78 MM	1	1	1	1	1	1	
413050	PAD,DRAIN		1	1	1	1	1	
4213006	PIN,DOWEL		1	1	1	1	1	
413058	PIN,DRIVE		1	1	1	1	1	
413035	PLUG,O'RING,STRAI.HEAD.STL,5/8		1	1	1	1	1	
412945	PLUNGER,OIL FEED		1	1	1	1	1	
411150	RING,RETAINING		1	1	1	1		
412977	SEAL,SHAFT,.625",BUNA	1	1	1	1	1	1	
412962	SEAL,SHAFT,3/8"	1	1	1	1	1	1	
412988	SEAL,SHAFT,5/8"	1	1	1	1	1	1	1
413040	SIGHT GLASS,W/CHROME BASE		2	2	2	2	2	
413140	SIGHT GLASS,WINDOW,OIL LEVEL							1
412951	SPRING,CHECK VALVE		1	1	1	1	1	
412991	SPRING,INT. VALVE,CONICAL,S/S			2	2	2	2	3
412949	SPRING,PLUNGER		1	1	1	1	1	
412783	SPRING,VALVE,CONICAL,S/S		1	1	1	1	1	1
412972	SPRING,VANE,COMP.,PLT. STL.		4	6	2	8	2	2
412996	SPRING,VANE,COMPRESSION,S/S				4		4	4
413048	VALVE,BYPASS		1	3	2	3	3	4
413119	VALVE,VENTED EXHAUST							1
413327	VANE,EXHAUST,GX		4	2	2	4	2	2
413469	VANE,GX,1ST STAGE,INTAKE				2			
413104	VANE,GX,1ST STAGE,INTAKE,LRG							2
413328	VANE,GX,1ST STAGE,LARGE			2		2		
413329	VANE,INTAKE,GX						2	
410491	WASHER	1	1	1		1	1	
411285	WASHER		2	2		2		
410961	WASHER,INTAKE PORT							1
412678	WASHER,THRUST	1						

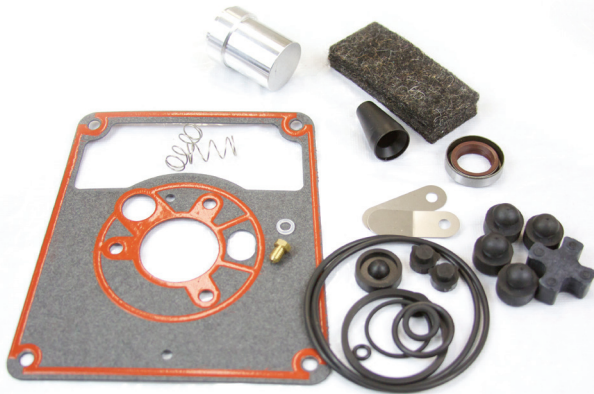
KITS

KIT BILL OF MATERIALS CAN BE FOUND LISTED ON THE 'KIT COMPONENTS' PAGES IMMEDIATELY FOLLOWING CORRESPONDING PUMP PAGES.

MINOR REPAIR KITS

MINOR REPAIR KITS INCLUDE GASKETS, SHAFT SEALS, KEYS, O-RINGS, DRIP PADS, COUPLING, SPRINGS, VALVES, WASHERS & OTHER COMPONENTS FOR LIGHT OVERHAUL.

MODEL(S)	PART NUMBER
8905, 8905/8910 A	8905K02
8907/8912/8917 A	8917K02



MAJOR REPAIR KITS

MAJOR REPAIR KITS INCLUDE ALL COMPONENTS OF MINOR REPAIR KITS PLUS VANES FOR MAJOR OVERHAUL.

MODEL(S)	PART NUMBER
8905 (OLD STYLE)	8905MRK
8905 A (NEW STYLE)	8905AMRK
8907 A	8907MRK
8910 A	8910MRK
8912 A	8912MRK
8917 A	8917MRK



FEATURED SPARES

ALL AVAILABLE SPARES FOR THIS SERIES CAN BE FOUND LISTED ON THE 'INDIVIDUAL SPARES' PAGES AT THE END OF THIS SECTION.

VANES

MODEL(S)		PART NUMBER
8905	(INTAKE)	612109A
8905	(EXHAUST)	612108A
8905 A	(INTAKE)	612178A
8905 A	(EXHAUST)	612179A
8907 A	(INTAKE)	616051
8907 A	(EXHAUST)	616052
8910 A	(INTAKE)	612178A
8910 A	(EXHAUST)	612179A
8912 A	(INTAKE)	616050
8912 A	(EXHAUST)	616053
8917 A	(INTAKE)	616049
8917 A	(EXHAUST)	616052



SHAFT SEALS

MODEL(S)		PART NUMBER
8905, 8905-8910 A	(5/8 IN)	412988
8907-8917 A	(3/8 IN)	412962
8907-8917 A	(3/4 IN)	413390



RECOMMENDED OILS

TYPE	PART NUMBER
PLUS 19 (1L/1.06QT) GENERAL PURPOSE OIL	PP19001
PLUS GOLD (1L/1.06QT) FULLY SYNTHETIC OIL	PPGOLD001
PLUS FF (1L/1.06QT) FLUSHING FLUID	PPFF001



KIT COMPONENTS

PART NUMBER	ITEM DESCRIPTION	8905-10A	8907A-17A	8905	8905A	8907A	8910A	8912A	8917A
		MINOR 8905K02	MINOR 8917K02	MAJOR 8905MRK	MAJOR 8905AMRK	MAJOR 8907MRK	MAJOR 8910MRK	MAJOR 8912MRK	MAJOR 8917MRK
616215	ASSY,SEAL,SHAFT,17MM		1			1		1	1
660211	FOOT,RUBBER,BASE		4			4		4	4
612123A	FOOT,RUBBER,PUSH IN	4		4	4		4		
612149B	GASKET,CASE	1		1	1		1		
660199	GASKET,CASE		1			1		1	1
616385	GASKET,MOLULE		1			1		1	1
410643	GASKET,SHAFT SEAL		1			1		1	1
413175	GASKET,WASHER,NYLON	1	1	1	1	1	1	1	1
620014	KEY,WOODRUFF,STEEL,#202		1			1		1	1
412732	KEY,WOODRUFF,STEEL,#403		1			1		1	1
616030	KNOB,GAS BALLAST		1			1		1	1
612231	O'RING,SHAPED,RING,VITON	1		1	1		1		
660225	O'RING,SHAPED,RING,VITON		1			1		1	1
660194	O'RING,VITON,158.42 X 2.62 MM		1			1		1	1
612130A	O'RING,VITON,17.12 X 2.62 MM		1			1		1	1
612159A	O'RING,VITON,18.72 X 2.62 MM	1		1	1		1		
412963	O'RING,VITON,2.57 X 1.78 MM		2			2		2	2
612155A	O'RING,VITON,21.95 X 1.78 MM	1		1	1		1		
660212	O'RING,VITON,23.47 X 2.62 MM		2			2		2	2
660200	O'RING,VITON,28.17 X 3.53 MM		1			1		1	1
612157A	O'RING,VITON,3.68 X 1.78 MM	2	1	2	2	1	2	1	1
413005	O'RING,VITON,4.47 X 1.78 MM		1			1		1	1
660204	O'RING,VITON,58.42 X 2.62 MM		1			1		1	1
660197	O'RING,VITON,6.07 X 1.78 MM		2			2		2	2
612128A	O'RING,VITON,64.77 X 2.62 MM	2		2	2		2		
619282A	O'RING,VITON,7.65 X 1.78 MM	1	1	1	1	1	1	1	1
660207	O'RING,VITON,71.12 X 2.62 MM		1			1		1	1
619526	O'RING,VITON,75.87 X 2.62 MM		1			1		1	1
612158A	O'RING,VITON,9.19 X 2.62 MM	1		1	1		1		
620274	ORFICE,HOSE BARB,.014"		1			1		1	1
611178A	ORIFICE,BRASS,.010"	1		1	1		1		
616084	PAD,DRIP,FELT		1			1		1	1
619479A	PAD,DRIP,FELT	1		1	1		1		
413390	SEAL,SHAFT,3/4"		1			1		1	1
412962	SEAL,SHAFT,3/8"		1			1		1	1
412988	SEAL,SHAFT,5/8"	2		2	2		2		
616002	SEAT,DRAIN VALVE,TEFLON		2			2		2	2
616038	SPIDER,COUPLER,BUNA,BLACK		1			1		1	1
412694	SPIDER,COUPLING,BUNA,BLACK	1		1	1		1		
616059	SPRING,EXHAUST VALVE,COMP.,S/S		1			1		1	1
612204A	SPRING,GAS BALLAST,COMP.,S/S		1			1		1	1
619426	SPRING,PLUNGER,COMPRES- SION,S/S		1			1		1	1
612119A	SPRING,VALVE,COMPRESSION,S/S	2		2	2		2		
412996	SPRING,VANE,COMPRESSION,S/S		4			4		4	4
612172A	TOOL,ALUMINUM	1		1	1		1		
612170A	TOOL,INSERTION,NYLON	1		1	1		1		
611128A	VALVE,BACKER	1		1	1		1		
619560A	VALVE,BY-PASS,EXHAUST		1						1
616057	VALVE,BY-PASS POPPET,INTERSTG.		1			1		1	1
612118A	VALVE,GAS BALLAST,VITON	2	1	2	2	1	2	1	1
611123A	VALVE,INTAKE	1		1	1		1		
612139A	VALVE,ISOLATION DISK,BUNA	1		1	1		1		
616058	VALVE,POPPET,EXHAUST		1			1		1	1
612179A	VANE,EXHAUST,GX				2		2		
616052	VANE,EXHAUST,GX					2			2
616053	VANE,EXHAUST,GX							2	
612109A	VANE,GX,1ST STAGE,INTAKE			2					
612108A	VANE,GX,2ND STAGE,EXHAUST			2					
612178A	VANE,INTAKE,GX				2		2		
616049	VANE,INTAKE,GX								2
616050	VANE,INTAKE,GX							2	
616051	VANE,INTAKE,GX					2			
2620793	WASHER,LOCK,#10,PLATED		3			3		3	3
616093	WASHER,THRUST		1			1		1	1

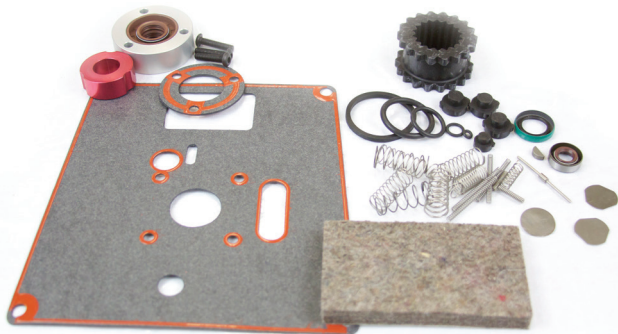
KITS

KIT BILL OF MATERIALS CAN BE FOUND LISTED ON THE 'KIT COMPONENTS' PAGES IMMEDIATELY FOLLOWING CORRESPONDING PUMP PAGES.

MINOR REPAIR KITS

MINOR REPAIR KITS INCLUDE GASKETS, SHAFT SEALS, KEYS, O-RINGS, DRIP PADS, COUPLING, SPRINGS, VALVES, WASHERS & OTHER COMPONENTS FOR LIGHT OVERHAUL.

MODEL(S)		PART NUMBER
8915, 8920	(OLD STYLE)	8915K02
8915/8920 A	(NEW STYLE)	8915AK02
8925 A		8925K02



MAJOR REPAIR KITS

MAJOR REPAIR KITS INCLUDE ALL COMPONENTS OF MINOR REPAIR KITS PLUS VANES FOR MAJOR OVERHAUL.

MODEL(S)		PART NUMBER
8915	(OLD STYLE)	8915MRK
8915 A	(NEW STYLE)	8915AMRK
8920	(OLD STYLE)	8920MRK
8920 A	(NEW STYLE)	8920AMRK
8925 A		8925MRK



FEATURED SPARES

ALL AVAILABLE SPARES FOR THIS SERIES CAN BE FOUND LISTED ON THE 'INDIVIDUAL SPARES' PAGES AT THE END OF THIS SECTION.

VANES

MODEL(S)		PART NUMBER
8915/8920	(EXHAUST)	413327
8915/8920 A	(EXHAUST)	619615A
8925 A	(EXHAUST)	619570A
8915	(INTAKE)	413479
8915 A	(INTAKE)	619538B
8920	(INTAKE)	413329
8920 A	(INTAKE)	619616B
8925 A	(INTAKE)	619571B



SHAFT SEALS

MODEL(S)		PART NUMBER
8915/8920	(VITON LIP)	411401E-01
8915-8925 A	(VITON LIP)	411401D-01



RECOMMENDED OILS

TYPE	PART NUMBER
PLUS 19 (1L/1.06QT) GENERAL PURPOSE OIL	PP19001
PLUS GOLD (1L/1.06QT) FULLY SYNTHETIC OIL	PPGOLD001
PLUS FF (1L/1.06QT) FLUSHING FLUID	PPFF001



KIT COMPONENTS

PART NUMBER	ITEM DESCRIPTION	8915/20	8915A-20A	8925A	8915	8915A	8920	8920A	8925A
		MINOR 8915K02	MINOR 8915AK02	MINOR 8925K02	MAJOR 8915MRK	MAJOR 8915AMRK	MAJOR 8920MRK	MAJOR 8920AMRK	MAJOR 8925MRK
619334A	FOOT,RUBBER			4					4
619224B	GASKET,PUMP,BEADED	1			1		1		
619609B	GASKET,PUMP,BEADED		1	1		1		1	1
619418B	GASKET,SPECIAL,FOR REPAIR KIT			1					1
619916	GASKET,SPECIAL,FOR REPAIR KIT			1					1
413175	GASKET,WASHER,NYLON			1					1
612229A	GLASS,SIGHT,OIL			1					1
412969	HOLDER,SPRING	1			1		1		
410624	KEY,WOODRUFF,CUT		1			1		1	
412732	KEY,WOODRUFF,STEEL,#403	1			1		1		
411401E-01	KIT,SHAFT SEAL,.625"	1			1		1		
411401D-01	KIT,SHAFT SEAL,.750"		1	1		1		1	1
612231	O'RING,SHAPED,RING,VITON	1	1	1	1	1	1	1	1
417320	O'RING,VITON,10.77 X 2.62 MM	1	1	1	1	1	1	1	1
612130A	O'RING,VITON,17.12 X 2.62 MM	1	1	1	1	1	1	1	1
412963	O'RING,VITON,2.57 X 1.78 MM	1			1		1		
619284A	O'RING,VITON,24.99 X 3.53 MM	1	1	1	1	1	1	1	1
620211	O'RING,VITON,26.70 X 1.78 MM		1			1		1	
612157A	O'RING,VITON,3.68 X 1.78 MM		1	1		1		1	1
413005	O'RING,VITON,4.47 X 1.78 MM		1			1		1	
619527	O'RING,VITON,52.07 X 2.62 MM		1			1		1	
619379	O'RING,VITON,55.25 X 2.62 MM			1					1
619282A	O'RING,VITON,7.65 X 1.78 MM	1	1	1	1	1	1	1	1
619526	O'RING,VITON,75.87 X 2.62 MM		1			1		1	
619378	O'RING,VITON,82.22 X 2.62 MM			1					1
619480A	PAD,DRIP,FELT	1	1	1	1	1	1	1	1
616091	PLUNGER,OIL FEED,EXHAUST			1					1
412977	SEAL,SHAFT,.625",BUNA	1			1		1		
413390	SEAL,SHAFT,3/4"		1	1		1		1	1
412962	SEAL,SHAFT,3/8"	1		1	1		1		1
412988	SEAL,SHAFT,5/8"	1			1		1		
413073	SLEEVE,COUPLING	1	1	1	1	1	1	1	1
413117	SLEEVE,COUPLING			1					1
619385A	SPRING,BYPASS VALVE,COMP.,S/S	3			3		3		
619561A	SPRING,EXHAUST VALVE,COMP.,S/S		1	1		1		1	1
612204A	SPRING,GAS BALLAST,COMP.,S/S	1	1	1	1	1	1	1	1
412991	SPRING,INT. VALVE,CONICAL,S/S	2			2		2		
619388A	SPRING,RELIEF,COMPRESSION,S/S	1			1		1		
619582A	SPRING,VALVE BYPASS,COMP.,S/S		2	2		2		2	2
612119A	SPRING,VALVE,COMPRESSION,S/S	1			1		1		
412783	SPRING,VALVE,CONICAL,S/S	1			1		1		
412972	SPRING,VANE,COMP.,PLT. STL.	2			2		2		
412996	SPRING,VANE,COMPRESSION,S/S	4		5	4		4		5
619560A	VALVE,BY-PASS,EXHAUST		3	3		3		3	3
413048	VALVE,BYPASS	2			2		2		
619371A	VALVE,BYPASS,C-0599	3		2	3		3		2
412782	VALVE,EXHAUST	1			1		1		
612118A	VALVE,GAS BALLAST,VITON	1	1	1	1	1	1	1	1
413327	VANE,EXHAUST,GX				2		2		
619570A	VANE,EXHAUST,GX								2
619615A	VANE,EXHAUST,GX					2		2	
413329	VANE,INTAKE,GX					2			
413479	VANE,INTAKE,GX				2				
619538B	VANE,INTAKE,GX					2			
619571B	VANE,INTAKE,GX								2
619616B	VANE,INTAKE,GX						2		

INDIVIDUAL SPARES

BEARINGS

413118 BEARING,RULON 8851

CAPS

618912 PLUG,EXHAUST,LARGE

COUPLINGS

412693 COUPLING 8905,8910
 412694 SPIDER,COUPLING,BUNA,BLACK M2C,M4C
 616038 SPIDER,COUPLER,BUNA,BLACK 8907A,8912A,8917A

ELEMENTS

1417G FILTER,ELEMENT,4"X4"X3"ID 1376,1380,1402,8806,8811,8814
 1417L FILTER,ELEMENT,REPLACEMENT 1392,1399,1400,1405,1410,8803, 8804, 8905,8890
 1417L-PP FILTER,ELEMENT 1400,1405,1410
 1417M05 FILTER,ELEMENT,9.25OD X 6.12H 1375,1395,1396,1398

FILTERS

410660 FILTER 1402,1405
 410890 FILTER,AIR 1400N
 410937 FILTER,SCREEN 1374,1397
 411692 FILTER,AIR 1376N

FITTINGS

8111014 ADPT,WELCH,KF16,S/S 1400,1410,1399
 8111029 ADPT,402 WELCH,KF25,S/S 1402,8806,8808,8811,8814,8816,8821
 8111048 ADPT,WELCH,KF40,1-1/2 THD.,S/S 1373,1376,1380,8831
 8111049 ADPT,WELCH,KF40,1-3/4 THD.,S/S 1374,1397,8851

GASKETS

410056 GASKET,SEAL 1400,1404,1410
 410231 GASKET,SHAFT END CAP 1 410
 410234 GASKET,1376,1380,1402 1376,1380,1402,1403
 410258 GASKET,INTAKE COVER 1410
 410383 GASKET,INTAKE COVER 1400
 410403 GASKET,CASE,FOAM RUBBER 1373,1376,1380,1402,1403,1405
 410403C GASKET,CASE,CORK 1373,1376,1380,1402
 410493 GASKET,1404 1404
 410643 GASKET,SHAFT SEAL 1376,1380,1399,1400,1410,1402,8907A,8912A,8917A,
 411052 GASKET,CASE 1399,1400,1410
 411178 GASKET,CENTER PLATE COVER 1405
 411308 GASKET,CHAMBER 1405
 411494 GASKET,SEAL 1374,1397
 411495 GASKET,INTAKE COVER 397
 411496 GASKET,CASE 1374,1397
 411508 GASKET,VALVE 1374,1397
 411711 GASKET,1375 1375
 412291 GASKET,1376,1402 1376,1402
 412375 GASKET,COVER 1399
 412517 GASKET,INTAKE COVER 1 375,1395,1396,1398
 412518 GASKET,1395,1396,1398 1395,1396,1398
 412744 GASKET,INTAKE COVER 8806,8811,8814,8821
 413111 GASKET,INTAKE COVER 8851
 413112 GASKET,SIDE COVER 8851
 413133 GASKET,CASE 8806,8811,8814,8821,8834, 8851
 413175 GASKET,WASHER,NYLON 8905A,8907A,8910A,8912A,8917A
 612149B GASKET,CASE 8905A,8910A
 616385 GASKET,MOLULE M4C,M6C,M8C
 618278A GASKET,INTAKE COVER,VITON 1376N
 618279B GASKET,OIL CASE,VITON 1376N
 618355B GASKET,OIL CASE,VITON 1400N
 619224B GASKET,PUMP,BEADED 89158920
 619418B GASKET,SPECIAL,FOR REPAIR KIT 8925A
 619609B GASKET,PUMP,BEADED 8915A,8920A,8925A
 619637B GASKET,PUMP 8815,M8C,M12C
 619916 GASKET,SPECIAL,FOR REPAIR KIT 8925A
 660199 GASKET,CASE 8907A,8912A,8917A

HARDWARE

2025708 SCREW,10-32 X 1/2",RND HD,SELF 1402,1405
 2620793 WASHER,LOCK,#10,PLATED 8907A
 2710040 WASHER,BRASS,#10 1400N
 410409 WASHER,ALUMINUM 1405
 410491 WASHER 1375,1380,1402

INDIVIDUAL SPARES

HARDWARE (CONT.)

410508	WASHER,THRUST	1376,1380,1402
410613	KEY,WOODRUFF,CUT	1376,1399,1400,1402,1405
410624	KEY,WOODRUFF,CUT	1376,1380,1399,8915A,8920A
410961	WASHER,INTAKE PORT	1374,1397
411056	WASHER,ALUM	1374,1397,1400,1405
411137	WASHER,ALUMINA	1395,1400,1410
411165	WASHER	1405
411266	WASHER,TENSION	1395,1403,1405
411267	WASHER,RUBBER	1373,1380,1395,1403,1405
411285	WASHER	8806
411490	KEY,WOODRUFF,CUT	1374,1397
411516	KEY,SMALL ROTOR,1374 & 1397	1374,1397
411766	WASHER,DISK	1376
412363	WASHER	1373,1380,1395,1410
412678	WASHER,THRUST	8800,M16C
412732	KEY,WOODRUFF,STEEL,#403	8907A,8912A,8915,8917A,8920
616093	WASHER,THRUST	8907A
618456A	WASHER,COPPER,5/16"	1402
620014	KEY,WOODRUFF,STEEL,#202	M4C,M6C,M8C

KITS

1373G	KIT,GASKET,1373	1373
1373G/MS	KIT,GASKET,WITH MACHANICAL SEAL	1373
1373PI	KIT,PRIMARY,CAST IRON,1373	1373
1373PI/MS	KIT,PRIMARY,C.I.,SPECIAL	1373
1373PP	KIT,PRIMARY,PHENOLIC,1373	1373
1373PP/MS	KIT,PRIMARY,PHENOLIC,SPECIAL	1373
1373S	KIT,SECONDARY,1373	1373
1373S/MS	KIT,SECONDARY,W/ MECH. SEAL	1373
1374G	KIT,GASKET,1374	1374
1374G/MS	KIT,GASKET,W/ MECH SEAL	1374
1374PI	KIT,PRIMARY,CAST IRON,1374	1374
1374PI/MS	KIT,PRIMARY,C.I.,SPECIAL	1374
1374PP	KIT,PRIMARY,PHENOLIC,1374	1374
1374PP/MS	MS KIT,PRIMARY,PHEN.,SPECIAL	1374
1374S	KIT,SECONDARY,1374	1374
1374S/MS	KIT,SECONDARY,W/ MECH. SEAL	1374
1376G	KIT,GASKET,1376	1376
1376G/MS	KIT,GASKET,W/ MECH. SEAL	1376
1376K-09	KIT,REPAIR,MINOR,1376N	1376N
1376K-10	KIT,REPAIR,MAJOR,IR VANE,1376N	1376N
1376PI	KIT,PRIMARY,CAST IRON,1376	1376
1376PI/MS	KIT,PRIMARY,C.I.,SPECIAL	1376
1376PP	KIT,PRIMARY,PHENOLIC,1376	1376
1376PP/MS	KIT,PRIMARY,PHENOLIC,SPECIAL	1376
1376S	KIT,SECONDARY,1376	1376
1376S/MS	KIT,SECONDARY,SPECIAL	1376
1396PI/MS	KIT,PRIMARY	1396
1397G	KIT,GASKET,1397	1397
1397G/MS	KIT,GASKET,W/ MECH. SEAL	1397
1397PI	KIT,PRIMARY,CAST IRON,1397	1397
1397PI/MS	KIT,PRIMARY,C.I.,SPECIAL	1397
1397PP	KIT,PRIMARY,PHENOLIC,1397	1397
1397PP/MS	KIT,PRIMARY,PHEN.,SPECIAL	1397
1397S	KIT,SECONDARY,1397	1397
1397S/MS	KIT,SECONDARY,W/ MECH. SEAL	1397
1398G	KIT,GASKET,1398	1398
1398G/MS	KIT,GASKET	1398
1398PI	KIT,PRIMARY,CAST IRON,1398	1398
1398PI/MS	KIT,PRIMARY	1398
1398PP	KIT,VANES,PRIM.,PHENOLIC,1398	1398
1398PP/MS	KIT,PRIMARY	1398
1398S	KIT,SECONDARY,1398	1398
1398S/MS	KIT,SECONDARY	1398
1399G	KIT,GASKET,1399	1399
1399G/MS	KIT,GASKET,W/ MECH. SEAL	1399
1399PI	KIT,PRIMARY,CAST IRON,1399	1399
1399PI/MS	KIT,PRIMARY,C.I.,SPECIAL	1399
1399PP	KIT,PRIMARY,PHENOLIC,1399	1399
1399PP/MS	KIT,PRIMARY,PHENOLIC,SPECIAL	1399
1399S	KIT,SECONDARY,1399	1399
1399S/MS	KIT,SECONDARY,W/ MECH. SEAL	1399
1400G	KIT,GASKET,1400	1400

INDIVIDUAL SPARES

KITS (CONT.)

1400G/MS	KIT,GASKET,W/ MECH. SEAL	1400
1400K-09	KIT,REPAIR,MINOR,1400N	1400N
1400K-10	KIT,REPAIR,MAJOR,IR VANE,1400N	1400N
1400PI	KIT,PRIMARY,CAST IRON,1400	1400
1400PI/MS	KIT,PRIMARY,C.I.,SPECIAL	1400
1400PP	KIT,PRIMARY,PHENOLIC,1400	1400
1400PP/MS	KIT,PRIMARY,PHENOLIC,SPECIAL	1400
1400S	KIT,SECONDARY,1400	1400
1400S/MS	KIT,SECONDARY,1400	1400
1402G	KIT,GASKET	1402
1402G/MS	KIT,GASKET,W/ MECH. SEAL	1402
1402K-09	KIT,REPAIR,MINOR,1402N	1402
1402K-10	KIT,REPAIR,MAJOR,IR VANE,1402N	1402N
1402PI	KIT,PRIMARY,CAST IRON,1402	1402
1402PI/MS	KIT,PRIMARY,C.I.,SPECIAL	1402
1402PP	KIT,PRIMARY,PHENOLIC,1402	1402
1402PP/MS	KIT,PRIMARY,PHENOLIC,SPECIAL	1402
1402S	KIT,SECONDARY,1402	1402
1402S/MS	KIT,SECONDARY,W/ MECH. SEAL	1402
1405G	KIT,GASKET,1405	1405
1405G/MS	KIT,GASKET,W/ MECH. SEAL	1405
1405PI	KIT,PRIMARY,CAST IRON,1405	1405
1405PI/MS	KIT,PRIMARY,C.I.,SPECIAL	1405
1405PP	KIT,PRIMARY,PHENOLIC,1405	1405
1405PP/MS	KIT,PRIMARY,PHENOLIC,SPECIAL	1405
1405S	KIT,SECONDARY,1405	1405
1405S/MS	KIT,SECONDARY,W/ MECH. SEAL	1405
411401D	KIT,SHAFT SEAL,MECH.,.750"	1373,1379,1380,1402
411401D-01	KIT,SHAFT SEAL,.750"	1373,1379,1380,1402
411401E	KIT,SHAFT SEAL,MECH.,.625"	1399,1400,1403,1404,1405,1410
411401F	KIT,SHAFT SEAL,MECH.,1.00"	1374,1397 (OLD),(SUPR PMP)
411401F-01	KIT,SHAFT SEAL,1.00"	1374,1397
8800SGK	KIT,SEAL&GASKET,8806/11/14/21	8806,8811,8814,8821,8851
8806MRK	KIT,MAJOR,REPAIR,GX,8806	8806
8811MRK	KIT,MAJOR,REPAIR,GX,8811	8811
8814MRK	KIT,MAJOR,REPAIR,GX,8814	8814
8816MRK	KIT,MAJOR,REPAIR,GX,8816	8816
8821MRK	KIT,MAJOR,REPAIR,GX,8821	8821
8851MRK	KIT,MAJOR,REPAIR,GX,8851	8851
8905AMRK	KIT,MAJOR,REPAIR,GX	8905A
8905K02	KIT,MINOR,REPAIR	8905,8905A,8910A
8905MRK	KIT,MAJOR,REPAIR,GX	8905
8907MRK	KIT,MAJOR,REPAIR,GX	8907A
8910MRK	KIT,MAJOR,REPAIR,GX	8910A
8912MRK	KIT,MAJOR,REPAIR,GX	8912A
8915AK02	KIT,MINOR,REPAIR,NEW STYLE	8915A,8920A
8915AMRK	KIT,MAJOR,REPAIR,GX	8915A
8915K02	KIT,MINOR,REPAIR,OLD STYLE	89158920
8915MRK	KIT,MAJOR,REPAIR,GX	8915
8917K02	KIT,MINOR,REPAIR	8907A,8912A,8917A
8917MRK	KIT,MAJOR,REPAIR,GX	8917A
8920AMRK	KIT,MAJOR,REPAIR,GX	8920A
8920MRK	KIT,MAJOR,REPAIR,GX	8920
8925K02	KIT,MINOR,REPAIR	8925A
8925MRK	KIT,MAJOR,REPAIR,GX	8925A

MISC.

410055	SPACER	1374
410588	SHOCK,MOUNT,RBR	1374,1397
410696	HOLDER,SPRING	1374,1376,1380,1397,1402
410929	LEGS,PUMP,BASE	1400,1402,1405
411063	HOLDER,SPRING	1399,1400,1410
411303	HOLDER,SPRING	1404,1405
411489	HOLDER,SPRING	1374,1397
411685	SPRING,HOLDER,CORROSION RESIS	1373,1397,1402,1403
411709	SPRING,HOLDER	1375
412471	SPRING,HOLDER	1375,1395,1396,1398
412472	SPRING,HOLDER	1395,1396,1398
412945	PLUNGER,OIL FEED	8806
412969	HOLDER,SPRING	8806,8811,8814,8821,8851,8915,8920
413035	PLUG,O'RING,STRAI.HEAD.STL,5/8	8806,8811,8814,8821
413050	PAD,DRAIN	8806,8811,8814,8821
413058	PIN,DRIVE	8806,8811,8814,8821,8915,8920

INDIVIDUAL SPARES

MISC. (CONT.)

4213006	PIN,DOWEL	8806,8811,8814,8821
4400800	BALL,STEEL	1375,1395,1396,1398
4401200	BALL,STEEL	1376,1380,1397,1402,1403
4402000	BALL,STEEL	1375
612123A	FOOT,RUBBER,PUSH IN	8905A
612370	COVER,WINDOW,OIL	8915A,8920A
612372	PLUG,FILLER	8905A
616002	SEAT,DRAIN VALVE,TEFLON	M4C,M6C,M8C
616030	KNOB,GAS BALLAST	M4C,M6C,M8C
616084	PAD,DRIP,FELT	8907A,8912A,8917A
616091	PLUNGER,OIL FEED,EXHAUST	M16C
616215	ASSY,SEAL,SHAFT,17MM	M4C,M6C,M8C
618315A	SPACER,BLOCK,VALVE 1	376N
618348A	STUD,BAFFLE	1400N
618559A	PIN,SPRING,VANE	1402N
619334A	FOOT,RUBBER	8925A
619479A	PAD,DRIP,FELT	8905A,8910A
619480A	PAD,DRIP,FELT	8915,8915A,8920,8920A,8925A
619742	PAD,DRIP,FELT	M12C,M16C
619743	PAD,DRIP,FELT	M2C,M4C
660211	FOOT,RUBBER,BASE	8907A
670520A	INSTRUCTIONS,REPLACEMENT 1	374
840032	INSTRUCTIONS,SHAFT SEAL,WELCH	1373

O-RINGS

320106	O'RING,VITON,25.07 X 2.62 MM	1400
411507	O'RING,BUNA,78.97 X 3.53 MM	1375,1395,1396,1397,1398
412065	O'RING,BUNA,21.82 X 3.53 MM	8806,8811,8814,8821
412481	O'RING,BUNA,91.44 X 5.33 MM	1375,1395,1396,1398
412482	O'RING,BUNA,113.67 X 5.33 MM	1375,1395,1396,1398
412487	O'RING,BUNA,18.64 X 3.53 MM	1395,1396,1398
412488	O'RING,BUNA,28.17 X 3.53 MM	1395,1396,1398
412515	O'RING,BUNA,85.32 X 3.53 MM	1375,1395,1396,1398
412642	O'RING,BUNA,9.19 X 2.62 MM	8806,8811,8814,8821
412963	O'RING,VITON,2.57 X 1.78 MM	8806,8811,8814,8821,8907A,8912A,8917A,8915,8920
413005	O'RING,VITON,4.47 X 1.78 MM	M2C,M4C
413727	O'RING,BUNA,40.87 X 3.53 MM	8521
417320	O'RING,VITON,10.77 X 2.62 MM	8915A,8920A
611178A	ORIFICE,BRASS,.010"	M2C,M4C
612128A	O'RING,VITON,64.77 X 2.62 MM	M2C,M4C
612130A	O'RING,VITON,17.12 X 2.62 MM	8907A,8912A,8917A,8905,8910,8915,8920,8915A,8920A
612155A	O'RING,VITON,21.95 X 1.78 MM	M2C,M4C
612157A	O'RING,VITON,3.68 X 1.78 MM	M8C,M12C
612158A	O'RING,VITON,9.19 X 2.62 MM	8905A
612159A	O'RING,VITON,18.72 X 2.62 MM	8905A,8910A
612162A	O'RING,VITON,14 X 1.78 MM	M2C,M4C
612231	O'RING,SHAPED,RING,VITON	M2C,M4C
618712	O'RING,VITON,224 X 5.1 MM	1374,1397
619282A	O'RING,VITON,7.65 X 1.78 MM	M2C,M4C
619284A	O'RING,VITON,24.99 X 3.53 MM	M8C,M12C
619378	O'RING,VITON,82.22 X 2.62 MM	M16C
619379	O'RING,VITON,55.25 X 2.62 MM	8925A
619526	O'RING,VITON,75.87 X 2.62 MM	M8C,M12C
619527	O'RING,VITON,52.07 X 2.62 MM	M8C,M12C
620118	O'RING,SHAPED,#013	MAXIMAC+,M4C,M6C,M8C,M12C,M16C
620211	O'RING,VITON,26.70 X 1.78 MM	M8C,M12C
620274	ORFICE,HOSE BARB,.014"	M4C,M6C,M8C
660194	O'RING,VITON,158.42 X 2.62 MM	M4C,M6C,M8C
660197	O'RING,VITON,6.07 X 1.78 MM	M4C,M6C,M8C
660200	O'RING,VITON,28.17 X 3.53 MM	M16C
660204	O'RING,VITON,58.42 X 2.62 MM	M4C,M6C,M8C
660207	O'RING,VITON,71.12 X 2.62 MM	M4C,M6C,M8C
660212	O'RING,VITON,23.47 X 2.62 MM	M4C,M6C,M8C
660225	O'RING,SHAPED,RING,VITON	M4C,M6C,M8C
660304	O'RING,AFLAS,36.17 X 2.62 MM	1376N

PLATES

411506	PLATE,VALVE,INNER	1374,1397
--------	-------------------	-----------

PULLEYS

410668	PULLEY,MOTOR	1402
410995	PULLEY	1397
412074	PULLEY	1376,1402

INDIVIDUAL SPARES

RINGS

4060754	RING	1402
411150	RING,RETAINING	1400,1405
411497	RING,EXHAUST	1397
412039	RING,EXHAUST	1402
412402	RING,RETAINING	1375,1395,1396,1398
412562	RING,INTAKE	1402

ROTORS

411499	ROTOR,EXHAUST,1397	1397
411518	ROTOR,EXHAUST	1402
412092	ROTOR,INTAKE	1402

SEALS

1401D	SEAL,SHAFT,MECH,W/SCREWS,.750"	1373
1401E	SEAL,SHAFT,MECH,W/SCREWS,.625"	1399
310035	SEAL,SHAFT,411401D-01	1373,1376,1380,1402
310036	SEAL,SHAFT,411401E-01	1399,1400,1403,1405
310037	SEAL,SHAFT,411401F-01	1374,1397
410578	SEAL,SHAFT (METAL CASE)	1376,1400,1402,1404,1410
411401E-01	KIT,SHAFT SEAL,.625"	1399,1400,1403,1404,1405,1410,8806,8811,8814
412491	ASSEMBLY,SEAL,SHAFT,WITH O'RING	1375,1395,1396,1398
412491INS	SEAL,SHAFT,COMPLETE INSERT	1375,1395,1396,1398
412962	SEAL,SHAFT,3/8"	8806,8811,8814,8821,8907A,8912A,8917A,8915,8920
412977	SEAL,SHAFT,.625",BUNA	8806,8811,8814,8821,8915,8920
412988	SEAL,SHAFT,5/8"	8806,8811,8814,8821,8851,8905A,8910A,8915,8920
413390	SEAL,SHAFT,3/4"	8907A,8912A,8917A,8915A,8920A,8925A

SHAFTS

411060	SHAFT,HARDENED,1400	1400
411293	SHAFT,1405	1405
411484	SHAFT,(NO COLLAR)	1374,1397
411683	SHAFT,1376	1376
412093	SHAFT,1402	1402
412374	SHAFT,1399	1399

SIGHT GLASSES

411268	SIGHT GLASS	1373,1375,1380,1395,1402,1397
413040	SIGHT GLASS,W/CHROME BASE	8806,8811,8814,8821
413140	SIGHT GLASS,WINDOW,OIL LEVEL	8851
413753	SIGHT GLASS,W/CHROME BASE	8806,8811,8814,8821,8851, 1402
612229A	GLASS,SIGHT,OIL M16C	

SLEEVES

412257	SLEEVE,HARDENED	1374,1397
412258	SLEEVE	1374,1397
413073	SLEEVE,COUPLING	8915,8915A,8920,8920A,8925A
413117	SLEEVE,COUPLING	8925A

SPRINGS

411304	SPRING,SS	1376,1380,1397,1399,1410
411488	SPRING,COMPRESSION,S/S	1374,1395,1396,1397,1398
411719	SPRING	1375
412158	SPRING,VALVE	1376,1402
412256	SPRING,COIL	1374,1397
412259	SPRING,COIL	1374,1397
412506	SPRING	1395,1396,1398
412507	SPRING	1375,1395,1396,1398
412783	SPRING,VALVE,CONICAL,S/S	8806,8811,8814,8821,8851,8915,8920
412949	SPRING,PLUNGER	8806,8811,8814,8821
412951	SPRING,CHECK VALVE	8806,8811,8814,8821
412952	SPRING	1375
412972	SPRING,VANE,COMP,PLT. STL.	8806,8811,8814,8821,8851,8915,8920
412991	SPRING,INT. VALVE,CONICAL,S/S	8811
412996	SPRING,VANE,COMPRESSION,S/S	8814,8821,8851,8907A,8912A,8917A,8915,8920,8925A
612119A	SPRING,VALVE,COMPRESSION,S/S	M2C,M4C
612204A	SPRING,GAS BALLAST,COMP,S/S	M2C,M4C
616059	SPRING,EXHAUST VALVE,COMP,S/S	8907A,8912A,8917A
619385A	SPRING,BYPASS VALVE,COMP,S/S	M8C,M12C
619388A	SPRING,RELIEF,COMPRESSION,S/S	M8C,M12C
619426	SPRING,PLUNGER,COMPRESSION,S/S	8907A,8912A,8917A
619561A	SPRING,EXHAUST VALVE,COMP,S/S	M8C,M12C
619582A	SPRING,VALVE BYPASS,COMP,S/S	M8C,M12C

INDIVIDUAL SPARES

TOOLS

612170A	TOOL,INSERTION,NYLON	8905A
612172A	TOOL,ALUMINUM	8905A

VALVES

410695	VALVE,EXHAUST	1403
410992	VALVE,PRESSURE RELIEF	1374,1376,1380,1397,1402
411239	VALVE,EXHAUST	1399,1400,1404,1405,1410
411734	VALVE,DRAIN	1380,1397,1399,1402,1410
411768	VALVE,LOWER EX,STAINLESS STL.	1373
411779	VALVE,UPPER EXHAUST	1373
412153	VALVE,UPPER EXHAUST,STEEL	1376,1402
412154	VALVE,LOWER EXHAUST,STEEL	1376,1402
412159	VALVE,BLOCK SPACER	1402
412161	VALVE,PRESSURE RELIEF,STEEL	1374,1397
412382	VALVE,BALL	1395,1396,1398
412782	VALVE,EXHAUST	8915,8920
413048	VALVE,BYPASS	8806,8811,8814,8821,8851,8915,8920
413119	VALVE,VENTED EXHAUST	8851
611123A	VALVE,INTAKE	M2C,M4C
611128A	VALVE,BACKER	M2C,M4C
612118A	VALVE,GAS BALLAST,VITON	M2C,M4C
612139A	VALVE,ISOLATION DISK,BUNA	M2C,M4C
616057	VALVE,BY-PASS POPPET,INTERSTG.	8907A,8912A,8917A
616058	VALVE,POPPET,EXHAUST	8907A,8912A,8917A
618314A	VALVE	1376N
618538A	VALVE,BACKER	1397
618539A	VALVE,FLAPPER	1397
619371A	VALVE,BYPASS,C-0599	M8C,M12C
619560A	VALVE,BY-PASS,EXHAUST	M8C,M12C
660117	VALVE,PURGE,STOPPER	MAXIMAC+,M4C,M6C,M8C,M12C,M16C

VANES

410959	VANE,CAST IRON,1ST STAGE,LARGE	1380,1402,1403
411059	VANE,PHENOLIC,1ST STAGE	1399,1400,1410
411059IRON	VANE,CAST IRON,1ST STAGE	1399,1400,1410
411294IRON	VANE,CAST IRON,2ND STAGE	14041405
411294PH	VANE,PHENOLIC,2ND STG	14041405
411462	VANE,PHENOLIC,1ST STAGE	1374,1397
411477	VANE,CAST IRON,1ST STAGE	1397
411487	VANE,CAST IRON,2ND STAGE,SMALL	1397,1402,1376
411684	VANE,CAST IRON,1ST STAGE	1376,1373
411724	VANE,CAST IRON,1ST STAGE,LARGE	1375
411729	VANE,PHENOLIC,1ST STG,LARGE	1375
411748	VANE,PHENOLIC,1ST STG,LARGE	1373,1376
412035	VANE,PHENOLIC,2ND STG,SMALL	1374,1376,1397,1402
412036	VANE,PHENOLIC,1ST STG,LARGE	1380,1402,1403
412380	VANE,PHENOLIC,2ND STG,SMALL	1375,1395,1396,1398
412383	VANE,PHENOLIC,1ST STG,LARGE	1395,1396,1398
412392	VANE,CAST IRON,2ND STAGE,SMALL	1375,1395,1396,1398
412406	VANE,CAST IRON,1ST STAGE,LARGE	1395,1396,1398
413104	VANE,GX,1ST STAGE,INTAKE,LRG	8851
413327	VANE,EXHAUST,GX	8806,8811,8814,8821,8851,8915,8920
413328	VANE,GX,1ST STAGE,LARGE	8811,8816
413329	VANE,INTAKE,GX	8821,8920
413469	VANE,GX,1ST STAGE,INTAKE	8814
413479	VANE,INTAKE,GX	8915
612108A	VANE,GX,2ND STAGE,EXHAUST	8905,M2C
612109A	VANE,GX,1ST STAGE,INTAKE	8905,M2C
612178A	VANE,INTAKE,GX	8910A,8905A,8910,8905
612179A	VANE,EXHAUST,GX	8910A,8905A,8910,8905
616049	VANE,INTAKE,GX	M8C,8917A
616050	VANE,INTAKE,GX	8912A,8912
616051	VANE,INTAKE,GX	8907A,8907
616052	VANE,EXHAUST,GX	M8C,8907A,8917A,8907,8917A
616053	VANE,EXHAUST,GX	8912A,8912
619538B	VANE,INTAKE,GX	8915A
619570A	VANE,EXHAUST,GX	8925A,8925
619571B	VANE,INTAKE,GX	8925A
619615A	VANE,EXHAUST,GX	8915A,8920A
619616B	VANE,INTAKE,GX	8920A

VBELTS

410708	V-BELT	1400,1402
--------	--------	-----------

INDIVIDUAL SPARES

VBELTS (CONT.)

410709	V-BELT	1404
410710	V-BELT	1376,1380,1402,1405
410711	V-BELT	1399
410713	V-BELT	1373,1373,1373,1380,1380,1380,1402,1402,1403,140
410715	V-BELT,COGGED	1397
410716	V-BELT	1374,1375
411716	V-BELT	1375
412512	V-BELT	1395,1396,1398