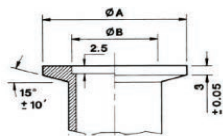


KF CLAMPS

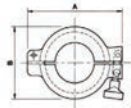
ALL OF OUR KF FLANGED FITTINGS ARE MANUFACTURED TO THE INDUSTRY STANDARD DIMENSIONS. THIS ALLOWS BOTH SIMPLE AND COMPLICATED PIPING TO FIT TOGETHER WITH EASE. PRECISION PLUS HAS A WIDE VARIETY OF 'KF' ADAPTORS, SO THAT YOU CAN CONNECT YOUR 'KF' FLANGED PIPEWORK TO OTHER TYPES OF FLANGES.



STANDARD DIMENSIONS: (MM)

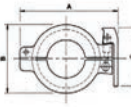
SIZE	A	B
KF10	30	12.2
KF16	30	17.2
KF25	40	26.2
KF40	55	41.2
KF50	75	52.2

SWING CLAMP, ALUMINUM (WING NUT)



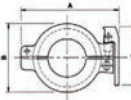
SIZE	PART No.	DIMENSIONS (mm)	
		A	B
KF 10&16	90512403	56.9	42.9
KF 25	90514403	70.1	55.1
KF 40	90516403	86.1	70.1
KF 50	90517403	110	94.1

HINGED CLAMP, POLYMER



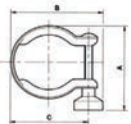
SIZE	PART No.	DIMENSIONS (mm)		
		A	B	C
KF 10&16	C10512303	68	40	57
KF 20&25	C10514303	80	50	57
KF 32&40	C10516303	95	66	57
KF 50	C10517303	125	86	57

HINGED CLAMP, ALUMINUM



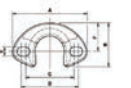
SIZE	PART No.	DIMENSIONS (mm)		
		A	B	C
KF 10&16	C10512402	68	40	57
KF 20&25	C10514402	80	50	57
KF 32&40	C10516402	95	66	57

CLAMPING RING, 316L STAINLESS



SIZE	PART No.	DIMENSIONS (mm)		
		A	B	C
KF 10&16	C10512401	44	46	34
KF 20&25	C10514401	60	60	48
KF 32&40	C10516401	73	75	63
KF 50	C10517401	90	96	84

C' CLAMP (ALL INCLUDE SCREW PACK)



SIZE	PART No.	DIMENSIONS (mm)					
		A	B	C	D	E	F
KF 10 Nickel Plated	C11002340	59	35	38	45	6.3	22
KF 25 Nickel Plated	C11004340	70	44	54*	54	8.3	25.4
KF 40 316L Stainless	C11005340	100	73.5	79	81	8.3	50

KF SEALS BUNA N

ALL OF OUR KF FLANGED FITTINGS ARE MANUFACTURED TO THE INDUSTRY STANDARD DIMENSIONS. THIS ALLOWS BOTH SIMPLE AND COMPLICATED PIPING TO FIT TOGETHER WITH EASE. PRECISION PLUS HAS A WIDE VARIETY OF 'KF' ADAPTORS, SO THAT YOU CAN CONNECT YOUR 'KF' FLANGED PIPEWORK TO OTHER TYPES OF FLANGES.

CENTER RING ASSEMBLY, BUNA N, 304L STAINLESS CARRIER



SIZE	PART No.	DIMENSIONS (mm)		
		A	B	C
KF 10	90511396	12	3.9	8
KF 16	90512396	17	3.9	8
KF 25	90514396	26	3.9	8
KF 40	90516396	41	3.9	8
KF 50	90517396	52	3.9	8

CENTER RING ASSEMBLY, BUNA N, ALUMINUM CARRIER



SIZE	PART No.	DIMENSIONS (mm)		
		A	B	C
KF 10	C10511398	12	3.9	8
KF 16	C10512398	17	3.9	8
KF 25	C10514398	26	3.9	8
KF 40	C10516398	41	3.9	8

CENTER RING ASSEMBLY, BUNA N, POLYMER CARRIER



SIZE	PART No.	DIMENSIONS (mm)		
		A	B	C
KF 10	C10511398	12	3.9	8
KF 16	C10512398	17	3.9	8
KF 25	C10514398	26	3.9	8
KF 40	C10516398	41	3.9	8

ADAPTING CENTERING RING ASSEMBLY, BUNA N



SIZE	PART No.	DIMENSIONS (mm)				
		A	B	C	D	E
KF 10 to 16 Stainless	C10512346	10	12	8	3.9	17
KF 10 to 16 Polymer	C10512349	10	12	8	3.9	17

O-RING, PACK OF 10, BUNA N



SIZE	PART No.	DIMENSIONS (mm)	
		A	B
KF 10	H02124012	15	5
KF 16	H02124013	18	5
KF 25	H02124015	28	5
KF 40	H02124017	42	5
KF 50	H02124018	50	5

KF SEALS VITON

ALL OF OUR KF FLANGED FITTINGS ARE MANUFACTURED TO THE INDUSTRY STANDARD DIMENSIONS. THIS ALLOWS BOTH SIMPLE AND COMPLICATED PIPING TO FIT TOGETHER WITH EASE. PRECISION PLUS HAS A WIDE VARIETY OF 'KF' ADAPTORS, SO THAT YOU CAN CONNECT YOUR 'KF' FLANGED PIPEWORK TO OTHER TYPES OF FLANGES.

CENTER RING ASSEMBLY, VITON, 304L STAINLESS CARRIER




SIZE	PART No.	DIMENSIONS (mm)		
		A	B	C
KF 10	C10511395	12	3.9	8
KF 16	C10512395	17	3.9	8
KF 25	C10514395	26	3.9	8
KF 40	C10516395	41	3.9	8
KF 50	C10517395	52	3.9	8

CENTER RING ASSEMBLY, VITON, ALUMINUM CARRIER



SIZE	PART No.	DIMENSIONS (mm)		
		A	B	C
KF 10	C10511397	12	3.9	8
KF 16	C10512397	17	3.9	8
KF 25	C10514397	26	3.9	8
KF 40	C10516397	41	3.9	8

CENTER RING ASSEMBLY, VITON, POLYMER CARRIER




SIZE	PART No.	DIMENSIONS (mm)		
		A	B	C
KF 10	C10511397	12	3.9	8
KF 16	C10512397	17	3.9	8
KF 25	C10514397	26	3.9	8
KF 40	C10516397	41	3.9	8

ADAPTING CENTERING RING ASSEMBLY, VITON



SIZE	PART No.	DIMENSIONS (mm)				
		A	B	C	D	E
KF 10 to 16 316L SS	C10512345	10	12	8	3.9	17
KF 10 to 16 Polymer	C10512350	10	12	8	3.9	17

CENTERING RING ASSEMBLY W/SCREEN, VITON, 316L STAINLESS CARRIER



SIZE	PART No.	DIMENSIONS (mm)		
		A	B	C
KF 16	C10512085	16	3.9	8
KF 25	C10514085	25	3.9	8
KF 40	C10516085	40	3.9	8
KF 50	C10517085	50	3.9	8

KF SEALS VITON (CONT.)

ALL OF OUR KF FLANGED FITTINGS ARE MANUFACTURED TO THE INDUSTRY STANDARD DIMENSIONS. THIS ALLOWS BOTH SIMPLE AND COMPLICATED PIPING TO FIT TOGETHER WITH EASE. PRECISION PLUS HAS A WIDE VARIETY OF 'KF' ADAPTORS, SO THAT YOU CAN CONNECT YOUR 'KF' FLANGED PIPEWORK TO OTHER TYPES OF FLANGES.

CENTERING RING ASSEMBLY w/OPTICAL BAFFLE, VITON, 304L STAINLESS CARRIER



SIZE	PART No.	DIMENSIONS (mm)		
		A	B	C
KF 25	D02110000	26	3.9	8.5

TRAPPED O-RING, VITON, 316L STAINLESS CARRIER



SIZE	PART No.	DIMENSIONS (mm)					
		A	B	C	D	E	F
KF 10&16	C10512490	32.5	27.5	30.2	7	18.5	16
KF 25	C10514490	42.5	37.5	40.2	7	28.5	25
KF 40	C10516490	57.5	52	55.2	7	43	40
KF 50	C10517490	77.5	64.5	75.2	7	55.5	50

O-RING, PACK OF 5, VITON




SIZE	PART No.	DIMENSIONS (mm)	
		A	B
KF 10	H02124032	15	5
KF 16	H02124033	18	5
KF 25	H02124035	28	5
KF 40	H02124037	42	5
KF 50	H02124038	50	5

KF BLANK FLANGES

ALL OF OUR KF FLANGED FITTINGS ARE MANUFACTURED TO THE INDUSTRY STANDARD DIMENSIONS. THIS ALLOWS BOTH SIMPLE AND COMPLICATED PIPING TO FIT TOGETHER WITH EASE. PRECISION PLUS HAS A WIDE VARIETY OF 'KF' ADAPTORS, SO THAT YOU CAN CONNECT YOUR 'KF' FLANGED PIPEWORK TO OTHER TYPES OF FLANGES.

BLANK FLANGE, 304L STAINLESS



SIZE	PART No.	DIMENSIONS (mm)			
		A	B	C	D
KF 10	90511366	30	12.2	6	2.5
KF 16	90512366	30	17.2	6	2.5
KF 25	90514366	40	26.2	6	2.5
KF 40	90516366	55	41.2	6	2.5
KF 50	90517366	75	52.2	6	2.5

BLANK FLANGE, ALUMINUM

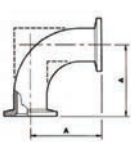


SIZE	PART No.	DIMENSIONS (mm)			
		A	B	C	D
KF 10	C10511368	30	12.2	6	2.5
KF 16	C10512368	30	17.2	6	2.5
KF 25	C10514368	40	26.2	6	2.5
KF 40	C10516368	55	41.2	6	2.5

KF ELBOWS & TEES

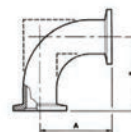
ALL OF OUR KF FLANGED FITTINGS ARE MANUFACTURED TO THE INDUSTRY STANDARD DIMENSIONS. THIS ALLOWS BOTH SIMPLE AND COMPLICATED PIPING TO FIT TOGETHER WITH EASE. PRECISION PLUS HAS A WIDE VARIETY OF 'KF' ADAPTORS, SO THAT YOU CAN CONNECT YOUR 'KF' FLANGED PIPEWORK TO OTHER TYPES OF FLANGES.

ELBOW, 90 DEGREES, 304L STAINLESS



SIZE	PART No.	DIMENSIONS (mm)
		A
KF 16	90512420	40
KF 25	90514420	50
KF 40	90516420	65
KF 50	90517420	70

ELBOW, 90 DEGREE, ALUMINUM



SIZE	PART No.	DIMENSIONS (mm)
		A
KF 10	C10511410	30
KF 16	C10512410	40
KF 25	C10514410	50
KF 40	C10516410	65

ELBOW, LONG RADIUS, 90 DEGREE, 316L STAINLESS



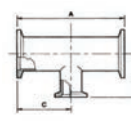
SIZE	PART No.	DIMENSIONS (mm)
		A
KF 40	C10516406	130
KF 50	C10517406	140

TEE PIECE, 304L STAINLESS



SIZE	PART No.	DIMENSIONS (mm)	
		A	B
KF 16	90512421	40	80
KF 25	90514421	50	100
KF 40	90516421	65	130
KF 50	90517421	70	140

REDUCING TEE PIECE, 316L STAINLESS

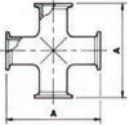


SIZE	PART No.	DIMENSIONS (mm)		
		A	B	C
KF 25 to 16	C10514427	100	40	50
KF 40 to 16	C10516428	130	40	65
KF 40 to 25	C10516429	130	50	65
KF 50 to 16	C10517430	140	50	70
KF 50 to 25	C10517431	140	65	70

KF CROSSES

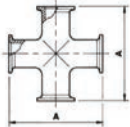
ALL OF OUR KF FLANGED FITTINGS ARE MANUFACTURED TO THE INDUSTRY STANDARD DIMENSIONS. THIS ALLOWS BOTH SIMPLE AND COMPLICATED PIPING TO FIT TOGETHER WITH EASE. PRECISION PLUS HAS A WIDE VARIETY OF 'KF' ADAPTORS, SO THAT YOU CAN CONNECT YOUR 'KF' FLANGED PIPEWORK TO OTHER TYPES OF FLANGES.

CROSS, 4-WAY, 304L STAINLESS



SIZE	PART No.	DIMENSIONS (mm)	
		A	B
KF 16	90512422	80	80
KF 25	90514422	100	100
KF 40	90516422	130	130
KF 50	90517422	140	140

CROSS, 4-WAY, ALUMINUM



SIZE	PART No.	DIMENSIONS (mm)	
		A	B
KF 10	C10511412	60	60
KF 16	C10512412	80	80
KF 25	C10514412	100	100
KF 40	C10516412	130	130

REDUCING CROSS, 316L STAINLESS



SIZE	PART No.	DIMENSIONS (mm)			
		A	B	C	D
KF 25 to 10	C10514423	70	70	26.2	12.2
KF 25 to 16	C10514424	100	80	26.2	17.2
KF 40 to 16	C10516424	130	80	41.2	17.2
KF 40 to 25	C10516425	130	100	41.2	26.2
KF 50 to 25	C10517425	140	100	52.2	26.2

REDUCING CROSS, ALUMINUM



SIZE	PART No.	DIMENSIONS (mm)			
		A	B	C	D
KF 25 to 10	C10514413	70	70	26.2	12.2
KF 40 to 10	C10516413	80	90	41.2	12.2

KF NIPPLES

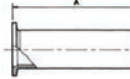
ALL OF OUR KF FLANGED FITTINGS ARE MANUFACTURED TO THE INDUSTRY STANDARD DIMENSIONS. THIS ALLOWS BOTH SIMPLE AND COMPLICATED PIPING TO FIT TOGETHER WITH EASE. PRECISION PLUS HAS A WIDE VARIETY OF 'KF' ADAPTORS, SO THAT YOU CAN CONNECT YOUR 'KF' FLANGED PIPEWORK TO OTHER TYPES OF FLANGES.

FULL NIPPLE, 316L STAINLESS



SIZE	PART No.	DIMENSIONS (mm)	
		A	B
KF 10	C10511433	60	60
KF 16	C10512433	80	80
KF 25	C10514433	100	100
KF 40	C10516433	130	130
KF 50	C10517433	140	140

FULL NIPPLE, ALUMINUM



SIZE	PART No.	DIMENSIONS (mm)	
		A	B
KF 10	C10511409	60	60
KF 16	C10512409	80	80
KF 25	C10514409	100	100
KF 40	C10516409	130	130

KF WELD STUBS

ALL OF OUR KF FLANGED FITTINGS ARE MANUFACTURED TO THE INDUSTRY STANDARD DIMENSIONS. THIS ALLOWS BOTH SIMPLE AND COMPLICATED PIPING TO FIT TOGETHER WITH EASE. PRECISION PLUS HAS A WIDE VARIETY OF 'KF' ADAPTORS, SO THAT YOU CAN CONNECT YOUR 'KF' FLANGED PIPEWORK TO OTHER TYPES OF FLANGES.

LONG WELD STUB, KF TO INCH OD TUBE, 304L STAINLESS



SIZE	PART No.	DIMENSIONS (mm)		
		A	B	C
KF 16 to 3/4" OD Tube	90504101	40	19.1	15.7
KF 25 to 1" OD Tube	90504223	40	25.4	22
KF 40 to 1-1/2" OD Tube	90504324	40	38.1	34.7
KF 50 to 2" OD Tube	90504351	40	50.8	47.4

LONG WELD STUB, KF TO METRIC OD TUBE, 304L STAINLESS



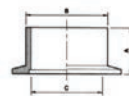
SIZE	PART No.	DIMENSIONS (mm)		
		A	B	C
KF 16 to 20mm OD Tube	90512316	70	20	16
KF 25 to 28mm OD Tube	90514316	70	28	24
KF 40 to 44.5mm OD Tube	90516616	70	44.5	40
KF 50 to 57mm OD Tube	90517316	70	57	50

SHORT WELD STUB, KF TO INCH OD TUBE, 304L STAINLESS



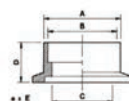
SIZE	PART No.	DIMENSIONS (mm)		
		A	B	C
KF 25 to 1" OD Tube	90504222	12.7	25.4	22
KF 40 to 1-1/2" OD Tube	90504323	19.1	38.1	34.7
KF 50 to 2" OD Tube	90504350	19.1	50.8	47.4

SHORT WELD STUB, KF TO METRIC OD TUBE, 304L STAINLESS



SIZE	PART No.	DIMENSIONS (mm)		
		A	B	C
KF 25 to 28mm OD Tube	90514311	30	28	24
KF 40 to 44.5mm OD Tube	90516611	30	44.5	40
KF 50 to 57mm OD Tube	90517311	30	57	50

SOCKET WELD STUB, KF TO INCH OD TUBE, 304L STAINLESS



SIZE	PART No.	DIMENSIONS (mm)				
		A	B	C	D	E
KF 25 to 1" OD Tube	90504224	28.6	25.9	22.1	12.7	25.4
KF 40 to 1-1/2" OD Tube	90504325	44.5	38.6	34.9	12.7	38.1

KF REDUCERS

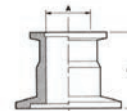
ALL OF OUR KF FLANGED FITTINGS ARE MANUFACTURED TO THE INDUSTRY STANDARD DIMENSIONS. THIS ALLOWS BOTH SIMPLE AND COMPLICATED PIPING TO FIT TOGETHER WITH EASE. PRECISION PLUS HAS A WIDE VARIETY OF 'KF' ADAPTORS, SO THAT YOU CAN CONNECT YOUR 'KF' FLANGED PIPEWORK TO OTHER TYPES OF FLANGES.

REDUCER, NON-CONICAL, 304L STAINLESS



SIZE	PART No.	DIMENSIONS (mm)	
		A	B
KF 25 to 10	90514446	16	28
KF 25 to 16	90514447	16	28
KF 40 to 16	90516448	16	28
KF 40 to 25	90516449	24	28
KF 50 to 25	90517051	24	40
KF 50 to 40	90517452	40	28

REDUCER, NON-CONICAL, ALUMINUM

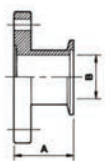


SIZE	PART No.	DIMENSIONS (mm)	
		A	B
KF 25 to 10	C10514436	10	40
KF 25 to 16	C10514437	10	40
KF 40 to 16	C10516438	16	40
KF 40 to 25	C10516439	24	40
KF 50 to 16	C10517040	16	40
KF 50 to 25	C10517043	24	40
KF 50 to 40	C10517041	41	40

KF ADAPTORS

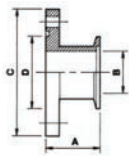
ALL OF OUR KF FLANGED FITTINGS ARE MANUFACTURED TO THE INDUSTRY STANDARD DIMENSIONS. THIS ALLOWS BOTH SIMPLE AND COMPLICATED PIPING TO FIT TOGETHER WITH EASE. PRECISION PLUS HAS A WIDE VARIETY OF 'KF' ADAPTORS, SO THAT YOU CAN CONNECT YOUR 'KF' FLANGED PIPEWORK TO OTHER TYPES OF FLANGES.

ADAPTOR, KF TO CF, 316L STAINLESS



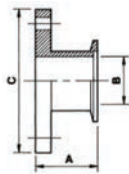
SIZE	PART No.	DIMENSIONS (mm)	
		A	B
KF 16 to 1-1/3" CF	C10503104	52.7	15.8
KF 16 to 2-3/4" CF	C10503105	45.3	15.8
KF 25 to 2-3/4" CF	C10503207	45.3	22
KF 40 to 2-3/4" CF	C10503305	45.3	40
KF 50 to 4-1/2" CF	C10503405	49.5	50

ADAPTOR, KF TO ASA, WITH O-RING GROOVE, 316L STAINLESS



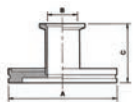
SIZE	PART No.	DIMENSIONS (mm)			
		A	B	C	D
KF 40 to 1-1/2" ASA	C10503309	46	40	127	67.6
KF 40 to 2" ASA	C10503310	46	40	152	86.9
KF 40 to 3" ASA	C10503311	46	40	190	118
KF 50 to 1-1/2" ASA	C10503409	46	50	127	67.9
KF 50 to 2" ASA	C10503410	46	50	152	86.9
KF 50 to 3" ASA	C10503411	46	50	190	119

ADAPTOR, KF TO ASA, NO O-RING GROOVE, 316L STAINLESS



SIZE	PART No.	DIMENSIONS (mm)		
		A	B	C
KF 40 to 1-1/2" ASA	C10503303	46	40	127
KF 40 to 2" ASA	C10503300	46	40	152
KF 40 to 3" ASA	C10503301	46	40	190
KF 50 to 1-1/2" ASA	C10503403	46	40	127
KF 50 to 2" ASA	C10503400	46	50	152
KF 50 to 3" ASA	C10503401	46	50	190

ADAPTOR, KF TO ISO-K (COLLAR ROTATABLE) 304L STAINLESS

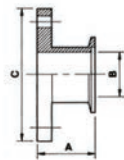


SIZE	PART No.	DIMENSIONS (mm)		
		A	B	C
KF 25 to ISO 63-K	90007115	95	22.1	50
KF 40 to ISO 63-K	90007116	95	34.8	50
KF 40 to ISO 80-K	90008002	110	41	118
KF 40 to ISO 100-K	90009122	130	41	50
KF 50 to ISO 63-K	90007118	95	47.5	50
KF 50 to ISO 80-K	90008003	110	51	118
KF 50 to ISO 100-K	90008123	130	51	50

KF ADAPTORS (CONT.)

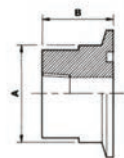
ALL OF OUR KF FLANGED FITTINGS ARE MANUFACTURED TO THE INDUSTRY STANDARD DIMENSIONS. THIS ALLOWS BOTH SIMPLE AND COMPLICATED PIPING TO FIT TOGETHER WITH EASE. PRECISION PLUS HAS A WIDE VARIETY OF 'KF' ADAPTORS, SO THAT YOU CAN CONNECT YOUR 'KF' FLANGED PIPEWORK TO OTHER TYPES OF FLANGES.

ADAPTOR, KF TO ISO-F (BOLTED NON-ROTATABLE) 316L STAINLESS



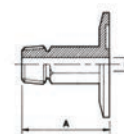
SIZE	PART No.	DIMENSIONS (mm)		
		A	B	C
KF 40 to ISO 40-F	A1516	69	40	100
KF 40 to ISO 63-F	A1448	68	40	130
KF 50 to ISO 40-F	C10005080	50	41	100
KF 50 to ISO 63-F	A1509	50	50	130
Bolt Kit, ISO-F	515000			

ADAPTOR, KF TO FNPT (NPT FEMALE) 304L STAINLESS



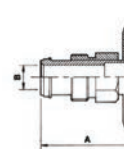
SIZE	PART No.	DIMENSIONS (mm)	
		A	B
KF 16 to 1/4" FNPT	90501107	20	19.1
KF 25 to 1/8" FNPT	90501223	28	19.1
KF 25 to 1/4" FNPT	90501224	28	19.1
KF 40 to 1/8" FNPT	90501309	45	25.4
KF 40 to 1/4" FNPT	90501310	45	25.4

ADAPTOR, KF TO MNPT (NPT MALE) 304L STAINLESS



SIZE	PART No.	DIMENSIONS (mm)	
		A	B
KF25 to 1/8" MNPT	90501217	40	4.7
KF25 to 1/4" MNPT	90501218	50	7.1
KF25 to 1/2" MNPT	90501219	75	11.9
KF25 to 3/4" MNPT	90501220	75	15.9
KF40 to 1/2" MNPT	90501304	75	11.9
KF40 to 3/4" MNPT	90501305	75	15.9
KF40 to 1" MNPT	90501306	75	25

ADAPTOR, KF TO VCR(M) (VCR MALE) 316L STAINLESS

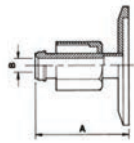


SIZE	PART No.	DIMENSIONS (mm)	
		A	B
KF16 to 1/4" VCR(M)	C10501108	35.6	4.8
KF16 to 1/2" VCR(M)	C10501110	41.4	10.4
KF25 to 1/4" VCR(M)	C10501225	35.6	4.8
KF25 to 1/2" VCR(M)	C10501227	40.6	10.4
KF25 to 3/4" VCR(M)	C10501229	54.4	15.7
KF40 to 1/4" VCR(M)	C10501311	35.6	4.8
KF40 to 1/2" VCR(M)	C10501313	40.6	10.4
KF40 to 3/4" VCR(M)	C10501315	53.3	15.7
KF50 to 1/4" VCR(M)	C10501508	35.6	4.8
KF50 to 1/2" VCR(M)	C10501510	40.6	10.4
KF50 to 3/4" VCR(M)	C10501512	53.3	15.7

KF ADAPTORS (CONT.)

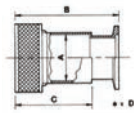
ALL OF OUR KF FLANGED FITTINGS ARE MANUFACTURED TO THE INDUSTRY STANDARD DIMENSIONS. THIS ALLOWS BOTH SIMPLE AND COMPLICATED PIPING TO FIT TOGETHER WITH EASE. PRECISION PLUS HAS A WIDE VARIETY OF 'KF' ADAPTORS, SO THAT YOU CAN CONNECT YOUR 'KF' FLANGED PIPEWORK TO OTHER TYPES OF FLANGES.

ADAPTOR, KF TO VCR(F) (VCR FEMALE) 316L STAINLESS



SIZE	PART No.	DIMENSIONS (mm)	
		A	B
KF16 to 1/4" VCR(F)	C10501109	35.6	4.8
KF16 to 1/2" VCR(F)	C10501111	41.4	10.4
KF25 to 1/4" VCR(F)	C10501226	35.6	4.8
KF25 to 1/2" VCR(F)	C10501228	40.6	10.4
KF25 to 3/4" VCR(F)	C10501230	54.4	15.7

ADAPTOR, KF TO GAUGE TUBE & COMPRESSION O-RING, 316L STAINLESS



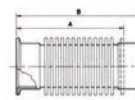
D = Tube O.D. in mm
 E = Tube O.D. in inches

SIZE	PART No.	DIMENSIONS (mm)			
		A	B	C	D
KF10 to 1/2" OD Tube	C10502001	13.1	50	33	12.7
KF16 to 1/4" OD Tube	C10502101	6.7	32	33	6.4
KF16 to 1/2" OD Tube	C10502102	13.1	50	33	12.7
KF16 to 3/4" OD Tube	C10502103	19.4	56	40	19.1
KF25 to 1/2" OD Tube	C10502201	13.1	50	33	12.7
KF25 to 3/4" OD Tube	C10502202	19.4	58	40	19.1
KF25 to 1" OD Tube	C10502203	25.8	62	46	25.4
KF40 to 1/2" OD Tube	C10502300	13.1	58	33	12.7
KF40 to 3/4" OD Tube	C10502301	19.4	63.5	40	19.1
KF40 to 1" OD Tube	C10502302	25.8	71	46	25.4
KF40 to 1-1/8" OD Tu	C10502303	29	74	49	28.6
KF40 to 1-1/2" OD Tu	C10502304	38.4	84	63.5	38.1
KF50 to 3/4" OD Tube	C10502400	19.4	63.5	40	19.1
KF50 to 1" OD Tube	C10502401	25.8	71	46	25.4
KF50 1-1/8" OD Tube	C10502402	29	74	49	28.6
KF50 to 1-1/2" OD Tu	C10502403	38.4	87	63.5	38.1
KF50 to 2" OD Tube	C10502404	51.1	87	66	50.8

KF BELLOWS

ALL OF OUR KF FLANGED FITTINGS ARE MANUFACTURED TO THE INDUSTRY STANDARD DIMENSIONS. THIS ALLOWS BOTH SIMPLE AND COMPLICATED PIPING TO FIT TOGETHER WITH EASE. PRECISION PLUS HAS A WIDE VARIETY OF 'KF' ADAPTORS, SO THAT YOU CAN CONNECT YOUR 'KF' FLANGED PIPEWORK TO OTHER TYPES OF FLANGES.

FLEXIBLE BELLOWS, KF X 123MM LONG, 316L STAINLESS



SIZE	PART No.	DIMENSIONS (mm)	
		A	B
KF 10	C10511670	102	123
KF 16	C10512670	102	123
KF 25	C10514670	102	123
KF 40	C10516670	102	123
KF 50	C10517670	102	123

PRECISION Plus

VACUUM PARTS

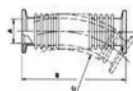
KF FITTINGS Fittings

KF FLEXIBLE PIPELINES, KF MISC.

KF FLEXIBLE PIPELINES

ALL OF OUR KF FLANGED FITTINGS ARE MANUFACTURED TO THE INDUSTRY STANDARD DIMENSIONS. THIS ALLOWS BOTH SIMPLE AND COMPLICATED PIPING TO FIT TOGETHER WITH EASE. PRECISION PLUS HAS A WIDE VARIETY OF 'KF' ADAPTORS, SO THAT YOU CAN CONNECT YOUR 'KF' FLANGED PIPEWORK TO OTHER TYPES OF FLANGES.

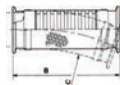
FLEXIBLE PIPELINE, KF, 316L STAINLESS



C = Min. bend radius, static
D = Min. bend radius, dynamic
E = Max. operating pressure, bar gauge

SIZE	PART No.	DIMENSIONS (mm)			
		A	B	C	D
KF10 x 250mm Long	C10511285	12.2	30	100	2.3
KF10 x 500mm Long	C10511286	12.2	30	100	2.3
KF10 x 750mm Long	C10511300	12.2	30	100	2.3
KF10 x 1000mm Long	C10511287	12.2	30	100	2.3
KF16 x 250mm Long	C10512285	17.2	30	130	1.8
KF16 x 500mm Long	C10512286	17.2	30	130	1.8
KF16 x 750mm Long	C10512300	17.2	30	130	1.8
KF16 x 1000mm Long	C10512287	17.2	30	130	1.8
KF25 x 250mm Long	C10514285	26.2	50	210	1.0
KF25 x 500mm Long	C10514286	26.2	50	210	1.0
KF25 x 750mm Long	C10514300	26.2	50	210	1.0
KF25 x 1000mm Long	C10514287	26.2	50	210	1.0

FLEXIBLE PIPELINE, KF, 316L STAINLESS



SIZE	PART No.	DIMENSIONS (mm)				
		A	B	C	D	E
KF40 x 250mm Long	C10516285	41.2	250	80	260	0.7
KF40 x 500mm Long	C10516286	41.2	500	80	260	0.7
KF40 x 750mm Long	C10516300	41.2	750	80	260	0.7
KF40 x 1000mm Long	C10516287	41.2	1000	80	260	0.7
KF50 x 250mm Long	C10517285	52.2	250	100	320	0.5
KF50 x 500mm Long	C10517286	52.2	500	100	320	0.5
KF50 x 750mm Long	C10517300	52.2	750	100	320	0.5
KF50 x 1000mm Long	C10517287	52.2	1000	100	320	0.5

BRAIDED FLEXIBLE EXHAUST PIPELINE, KF, 316L STAINLESS



SIZE	PART No.	DIMENSIONS (mm)				
		A	B	C	D	E
KF25 x 135mm Long	C10514294	26.2	135	50	320	10.0
KF25 x 250mm Long	C10514295	26.2	250	50	320	10.0
KF25 x 500mm Long	C10514296	26.2	500	50	320	10.0
KF25 x 1000mm Long	C10514297	26.2	1000	50	320	10.0
KF40 x 135mm Long	C10516294	41.2	135	80	400	10.0
KF40 x 250mm Long	C10516295	41.2	250	80	400	10.0
KF40 x 500mm Long	C10516296	41.2	500	80	400	10.0
KF40 x 1000mm Long	C10516297	41.2	1000	80	400	10.0
KF50 x 135mm Long	C10517294	52.2	135	100	450	10.0
KF50 x 250mm Long	C10517295	52.2	250	100	450	10.0
KF50 x 500mm Long	C10517296	52.2	500	100	450	10.0
KF50 x 1000mm Long	C10517297	52.2	1000	100	450	10.0

KF MISC.

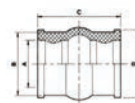
ALL OF OUR KF FLANGED FITTINGS ARE MANUFACTURED TO THE INDUSTRY STANDARD DIMENSIONS. THIS ALLOWS BOTH SIMPLE AND COMPLICATED PIPING TO FIT TOGETHER WITH EASE. PRECISION PLUS HAS A WIDE VARIETY OF 'KF' ADAPTORS, SO THAT YOU CAN CONNECT YOUR 'KF' FLANGED PIPEWORK TO OTHER TYPES OF FLANGES.

OPTICAL VIEWPORT, KF, 316L STAINLESS



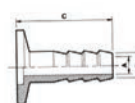
SIZE	PART No.	DIMENSIONS (mm)
		A
KF 40	C10516407	23.6
KF 50	C10517407	31.8

MOLDED SLEEVE, KF, NEOPRENE



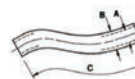
SIZE	PART No.	DIMENSIONS (mm)			
		A	B	C	D
KF10 to 1/2" OD Tube	C26501002	13	21	38	23
KF25 to 1" OD Tube	C26501004	27	36	55	38

NOZZLE, KF TO 12MM ID TUBING, ALUMINUM



SIZE	PART No.	DIMENSIONS (mm)		
		A	B	C
KF10 x 12mm ID	C10511645	7	40	
KF25 x 12mm ID	C10514645	7	40	
KF40 x 12mm ID	C10516645	7	40	

TUBE, NEOPRENE RUBBER, 1000MM CUT LENGTH (1 METER)



SIZE	PART No.	DIMENSIONS (mm)		
		A	B	C
5mm ID x 19 mm OD	H02100002	1000 / 1 metre		
7mm ID x 17 OD	H02100003	1000		
9mm ID x 25mm OD	H02100004	1000		
12mm ID x 28mm OD	H02100005	1000		
20mm ID x 34mm OD	H02100006	1000		

KF HOSES

ALL OF OUR KF FLANGED FITTINGS ARE MANUFACTURED TO THE INDUSTRY STANDARD DIMENSIONS. THIS ALLOWS BOTH SIMPLE AND COMPLICATED PIPING TO FIT TOGETHER WITH EASE. PRECISION PLUS HAS A WIDE VARIETY OF 'KF' ADAPTORS, SO THAT YOU CAN CONNECT YOUR 'KF' FLANGED PIPEWORK TO OTHER TYPES OF FLANGES.

HOSE, NEOPRENE RUBBER, REINFORCED - 305MM CUT LENGTH (1 FOOT)

SIZE	PART No.	DIMENSIONS (mm)		
		A	B	C
25mm ID x 32mm OD	C06600025	305 / 1 foot		

HOSE, REINFORCED PVC - PER FOOT LENGTH

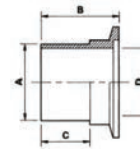


SIZE	PART No.
1/2" ID Tube	A63012220
3/4" ID Tube	U30002173
1" ID Tube	A63012343
1-1/2" ID Tube	U30000484
2" ID Tube	U30003837

KF HOSE ADAPTORS & CLAMPS

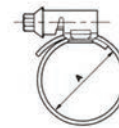
ALL OF OUR KF FLANGED FITTINGS ARE MANUFACTURED TO THE INDUSTRY STANDARD DIMENSIONS. THIS ALLOWS BOTH SIMPLE AND COMPLICATED PIPING TO FIT TOGETHER WITH EASE. PRECISION PLUS HAS A WIDE VARIETY OF 'KF' ADAPTORS, SO THAT YOU CAN CONNECT YOUR 'KF' FLANGED PIPEWORK TO OTHER TYPES OF FLANGES.

ADAPTOR, KF TO PVC HOSE, 316L STAINLESS



SIZE	PART No.	DIMENSIONS (mm)			
		A	B	C	D
KF10 to 1/2" ID Hose	C10504081	12.7	32	20	12.7
KF16 to 1/2" ID Hose	C10504104	12.7	32	20	12.7
KF16 to 3/4" ID Hose	C10504105	19.1	32	20	19.1
KF25 to 1" ID Hose	C10504225	25.4	38.1	26	25.4
KF40 to 1-1/2" ID Ho	C10504326	38.1	50	38.1	38.1
KF50 to 2" ID Hose	C10504352	47.4	55	41	50.8

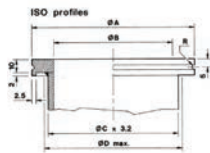
CLAMP, PVC HOSE, STAINLESS STEEL



SIZE	PART No.	DIMENSIONS (mm)
		A
KF 10/16	C10512408	25
KF 25	C10514408	36
KF 40	C10516408	50
KF 50	C10517408	60

ISO FLANGE KITS & CLAMPS

PRECISION PLUS OFFERS THE ISO-K ROTATABLE COLLAR FLANGE AS OUR STANDARD. THIS FLANGE EASILY CONNECTS WITH THE ISO-F BOLTED FLANGE USING A VARIETY OF CLAW CLAMS OR A ROTATABLE FLANGE KIT. WE ALSO OFFER A VARIETY OF ADAPTORS SO YOU CAN CONNECT YOUR 'ISO' PIPEWORK TO OTHER TYPE FLANGES. ISO-K COLLAR ROTATABLE FLANGE.



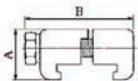
SIZE	DIMENSIONS (mm)				R
	A	B	C	R	
ISO 63-K	95	70	76.1mm / 3"	1.5	
ISO 80-K	110	83	88.9mm / 3.5"	1.5	
ISO 100-K	130	102	114.3mm / 4"	1.5	
ISO 160-K	180	153	160.3mm / 6"	2.5	

ROTATABLE FLANGE KIT, ISO-K (COLLAR ROTATABLE) TO ISO-F (BOLTED) OR ISO-K TO ISO-K, 304L STAINLESS



SIZE	PART No.	DIMENSIONS (mm)				
		A	B	C	D	E
ISO 63-K	90007010	130	110	95.6	9x4	12
ISO 80-K	90008012	145	125	110	9x4	12
ISO 100-K	90009010	165	145	130.6	9x4	12

DOUBLE CLAW CLAMP, ISO-K (COLLAR ROTATABLE) ALUMINUM

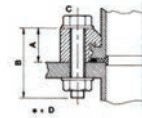


SIZE	PART No.	DIMENSIONS (mm)		
		A	B	C
ISO 63-K qty 4-8	90007090	24.1	50.3	M8 BOLT
ISO 80-K qty 4-8	90007090	24.1	50.3	M8 BOLT
ISO 100-K qty 4	90007090	24.1	50.3	M8 BOLT

ISO CLAMPS (CONT.)

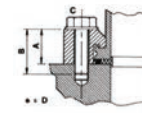
PRECISION PLUS OFFERS THE ISO-K ROTATABLE COLLAR FLANGE AS OUR STANDARD. THIS FLANGE EASILY CONNECTS WITH THE ISO-F BOLTED FLANGE USING A VARIETY OF CLAW CLAMS OR A ROTATABLE FLANGE KIT. WE ALSO OFFER A VARIETY OF ADAPTORS SO YOU CAN CONNECT YOUR 'ISO' PIPEWORK TO OTHER TYPE FLANGES. ISO-K COLLAR ROTATABLE FLANGE:

HALF CLAW CLAMP, ISO-K (COLLAR ROTATABLE) ZINC PLATED STEEL, USE WITH CENTERING RING & CLEAR (THRU) HOLES



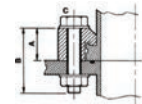
SIZE	PART No.	DIMENSIONS (mm)			
		A	B	C	D
ISO 63-K	C10007150	22.5	35	M8	4
ISO 80-K	C10007150	22.5	35	M8	4
ISO 100-K	C10007150	22.5	35	M8	4
ISO 160-K	C10011150	23	40	M10	8
ISO 200-K	C10011150	23	40	M12	8
ISO 250-K	C10011150	23	40	M12	8

HALF CLAW CLAMP, ISO-K (COLLAR ROTATABLE) ZINC PLATED STEEL, USE WITH CENTERING RING & TAPPED HOLES



SIZE	PART No.	DIMENSIONS (mm)			
		A	B	C	D
ISO 63-K	C10007151	22.5	35	M8	4
ISO 80-K	C10007151	22.5	35	M8	4
ISO 100-K	C10007151	22.5	35	M8	4
ISO 160-K	C10011151	22.5	35	M10	8
ISO 200-K	C10011151	22.5	35	M12	8
ISO 250-K	C10011151	22.5	35	M12	8

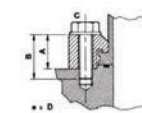
HALF CLAW CLAMP, ISO-K (COLLAR ROTATABLE) ZINC PLATED STEEL, USE WITH O-RING GROOVE & CLEAR (THRU) HOLES



SIZE	PART No.	DIMENSIONS (mm)			
		A	B	C	D
ISO 63-K	C10007149	18.6	45	M8	4
ISO 100-K	C10007149	18.6	45	M8	8

D = Qty required

HALF CLAW CLAMP, ISO-K (COLLAR ROTATABLE) ZINC PLATED STEEL, USE WITH O-RING GROOVE & TAPPED HOLES



SIZE	PART No.	DIMENSIONS (mm)			
		A	B	C	D
ISO 63-K	C10007093	20.6	35	M8	4
ISO 80-K	C10007093	20.6	35	M8	4
ISO 100-K	C10007093	20.6	35	M8	4
ISO 160-K	C10011093	24	40	M10	8
ISO 200-K	C10011093	24	40	M12	8
ISO 250-K	C10011093	24	40	M12	8

D = Qty required

ISO SEALS BUNA N

PRECISION PLUS OFFERS THE ISO-K ROTATABLE COLLAR FLANGE AS OUR STANDARD. THIS FLANGE EASILY CONNECTS WITH THE ISO-F BOLTED FLANGE USING A VARIETY OF CLAW CLAMS OR A ROTATABLE FLANGE KIT. WE ALSO OFFER A VARIETY OF ADAPTORS SO YOU CAN CONNECT YOUR 'ISO' PIPEWORK TO OTHER TYPE FLANGES. ISO-K COLLAR ROTATABLE FLANGE.

TRAPPED O-RING, BUNA, 304L S/S CENTER, AL OUTER RING



SIZE	PART No.	DIMENSIONS (mm)			
		A	B	C	D
ISO 40	97158175				
ISO 63	97158176	CALL FOR DETAILS			
ISO 80	97158169				
ISO 100	97158177				

O-RING, BUNA



SIZE	PART No.	DIMENSIONS (mm)	
		A	B
ISO 63 (Pack of 5)	H02105052	75.6	5.3
ISO 80 (Pack of 2)	H02105185	89.7	5.3
ISO 100 (Pack of 2)	H02105062	107.3	5.3
ISO 160 (Pack of 1)	H02105223	155.6	6.99

ISO SEALS VITON

PRECISION PLUS OFFERS THE ISO-K ROTATABLE COLLAR FLANGE AS OUR STANDARD. THIS FLANGE EASILY CONNECTS WITH THE ISO-F BOLTED FLANGE USING A VARIETY OF CLAW CLAMS OR A ROTATABLE FLANGE KIT. WE ALSO OFFER A VARIETY OF ADAPTORS SO YOU CAN CONNECT YOUR 'ISO' PIPEWORK TO OTHER TYPE FLANGES. ISO-K COLLAR ROTATABLE FLANGE.

CENTERING RING ASSEMBLY, VITON, 316L STAINLESS



SIZE	PART No.	DIMENSIONS (mm)		
		A	B	C
ISO 63	C10007174	70	3.9	8
ISO 80	C10008174	83	3.9	8
ISO 100	C10009174	102	3.9	8
ISO 160	C10011174	153	3.9	8

CENTERING RING WITH SCREEN, VITON, 316L STAINLESS



SIZE	PART No.	DIMENSIONS (mm)		
		A	B	C
ISO 63	C10521085	70	3.9	8
ISO 80	C10522085	83	3.9	8
ISO 100	C10523085	102	3.9	8
ISO 160	C10524085	153	3.9	8

TRAPPED O-RING, VITON, 316L STAINLESS CENTER, ALUMINUM OUTER RING



SIZE	PART No.	DIMENSIONS (mm)			
		A	B	C	D
ISO 40	B27158165	63	41	3.9	8
ISO 63	B27158170	95	70	3.9	8
ISO 80	B27158181	109	83	3.9	8
ISO 100	B27158171	128	102	3.9	8
ISO 160	B27158172	179	153	3.9	8

O-RING, VITON

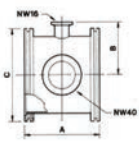


SIZE	PART No.	DIMENSIONS (mm)	
		A	B
ISO 63	H02106052	75.6	5.3
ISO 80	H02106185	89.7	5.3
ISO 100	H02106062	107.3	5.3
ISO 160	H02106223	155.6	6.99

ISO MISC.

PRECISION PLUS OFFERS THE ISO-K ROTATABLE COLLAR FLANGE AS OUR STANDARD. THIS FLANGE EASILY CONNECTS WITH THE ISO-F BOLTED FLANGE USING A VARIETY OF CLAW CLAMS OR A ROTATABLE FLANGE KIT. WE ALSO OFFER A VARIETY OF ADAPTORS SO YOU CAN CONNECT YOUR 'ISO' PIPEWORK TO OTHER TYPE FLANGES. ISO-K COLLAR ROTATABLE FLANGE.

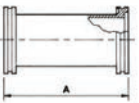
CONNECTOR w/TWO LATERAL FLANGES, 316L STAINLESS ISO-K (COLLAR ROTATABLE) TO KF



SIZE	PART No.	DIMENSIONS (mm)		
		A	B	C
ISO 63-K	C10007215	88	60	95
ISO 100-K	C10009215	108	75	130
ISO 160-K	C10011215	138	100	180

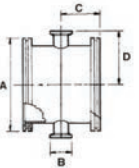
Lateral ports are NW 16 and NW 40, one each, as shown on drawing.

NIPPLE, ISO-K (COLLAR ROTATABLE) 316L STAINLESS



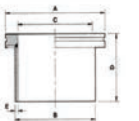
SIZE	PART No.	DIMENSIONS (mm)
		A
ISO 63-K	C10007140	176
ISO 80-K	C10008022	196
ISO 100-K	C10009160	216

REDUCING CROSS, ISO-K (COLLAR ROTATABLE) TO KF, 316L STAINLESS



SIZE	PART No.	DIMENSIONS (mm)			
		A	B	C	D
ISO 63-K to KF16	C10007230	95	30	102	58
ISO 63-K to KF25	C10007231	95	40	102	79
ISO 63-K to KF40	C10007232	95	55	102	76
ISO 63-K to KF50	C10007233	95	75	102	92
ISO 100-K to KF25	C10009231	130	40	130	98
ISO 100-K to KF40	C10009232	130	55	130	95
ISO 100-K to KF50	C10009233	130	75	130	111
ISO 160-K to KF40	C10011232	180	55	160	121
ISO 160-K to KF50	C10011233	180	75	160	136

WELD STUB, ISO-K (COLLAR ROTATABLE) 316L STAINLESS

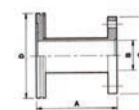


SIZE	PART No.	DIMENSIONS (mm)				
		A	B	C	D	E
ISO 63-K	C10007032	95	76	70	100	3.2
ISO 80-K	C10008013	110	76	83	100	3.2
ISO 100-K	C10009032	130	108	102	100	3.2

ISO-K ADAPTORS

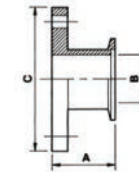
PRECISION PLUS OFFERS THE ISO-K ROTATABLE COLLAR FLANGE AS OUR STANDARD. THIS FLANGE EASILY CONNECTS WITH THE ISO-F BOLTED FLANGE USING A VARIETY OF CLAW CLAMS OR A ROTATABLE FLANGE KIT. WE ALSO OFFER A VARIETY OF ADAPTORS SO YOU CAN CONNECT YOUR 'ISO' PIPEWORK TO OTHER TYPE FLANGES. ISO-K COLLAR ROTATABLE FLANGE:

ADAPTOR, ISO-F (BOLTED) TO ISO-K (COLLAR ROTATABLE) 316L STAINLESS



SIZE	PART No.	DIMENSIONS (mm)			
		A	B	C	D
ISO 40-F to ISO 63-K	C10007087	106	41	100	95
ISO 40-F to ISO 80-K	C10008180	106	41	100	110
ISO 40-F to ISO 100-K	C10009087	106	41	100	130
ISO 63-F to ISO 63-K	C10007155	160	70	130	95

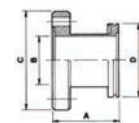
ADAPTOR, ISO-F (BOLTED) TO KF, 316L STAINLESS



SIZE	PART No.	DIMENSIONS (mm)		
		A	B	C
ISO 40-F to KF 40	A1516	69	40	100
ISO 40-F to KF 50	C10005080	50	41	100
ISO 63-F to KF 40	A1448	68	40	130
ISO 63-F to KF 50	A1509	50	50	130
Bolt Kit	515000			

NOTE: Bolt kit not need for Part number 10005080

ADAPTOR, ISO-K (COLLAR ROTATABLE) TO CF (CONFLAT), 316L STAINLESS



SIZE	PART No.	DIMENSIONS (mm)			
		A	B	C	D
ISO 63-K to DN63CF / 4-1/2"	C10007130	110	60	114	95
ISO 80-K to DN100CF / 6"	C10008007	110	73	152	110
ISO 100-K to DN100CF / 6"	C10009149	111	98	152	130
ISO 160-K to DN160CF / 8"	C10011063	113	148	203	180
ISO 200-K to DN200CF / 10"	C10012050	113	197	254	240

ADAPTOR, ISO-K (COLLAR ROTATABLE) TO ASA, 316L STAINLESS (WITH O-RING GROOVE)



SIZE	PART No.	DIMENSIONS (mm)				
		A	B	C	D	E
ISO 63-K to 2" ASA	C10007132	106	60.2	152	95	3.4
ISO63-K to 3" ASA	C10007134	106	60.2	190	95	4.7
ISO80-K to 2" ASA	C10008008	106	72.9	152	110	3.4
ISO80-K to 3" ASA	C10008010	106	72.9	190	110	4.7
ISO100-K to 2" ASA	C10009151	106	72.9	152	130	3.4
ISO100-K to 3" ASA	C10009153	106	98.3	190	130	4.7
ISO100-K to 4" ASA	C10009155	106	98.3	229	130	6.1
ISO160-K to 4"ASA	C10011065	106	136	229	180	6.1
ISO160-K to 6"ASA	C10011067	112	148	279	180	7.9

ISO O-RINGS, ASA ADAPTORS

PRECISION PLUS OFFERS THE ISO-K ROTATABLE COLLAR FLANGE AS OUR STANDARD. THIS FLANGE EASILY CONNECTS WITH THE ISO-F BOLTED FLANGE USING A VARIETY OF CLAW CLAMS OR A ROTATABLE FLANGE KIT. WE ALSO OFFER A VARIETY OF ADAPTORS SO YOU CAN CONNECT YOUR 'ISO' PIPEWORK TO OTHER TYPE FLANGES. ISO-K COLLAR ROTATABLE FLANGE.

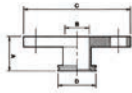
O-RING, ASA, NITRILE

A = I.D.

B = Thickness in inches

SIZE	PART No.	DIMENSIONS (mm)	
		A	B
2" ASA	H02125175	3.484	.139
3" ASA	H02125176	4.609	.139
4" ASA	H02125177	5.984	.139
6" ASA	H02125178	7.894	.139

ADAPTOR, ISO-K (COLLAR ROTATABLE) TO ASA, 316L STAINLESS (NO O-RING GROOVE)

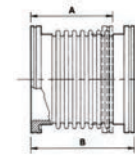


SIZE	PART No.	DIMENSIONS (mm)			
		A	B	C	D
ISO 63-K to 2" ASA	C10007131	106	60.2	152	95
ISO 63-K to 3" ASA	C10007133	106	60.2	190	95
ISO 80-K to 2" ASA	C10008009	106	72.9	152	110
ISO 80-K to 3" ASA	C10008011	106	72.9	190	110
ISO 100-K to 2" ASA	C10009150	106	72.9	152	130
ISO 100-K to 3" ASA	C10009152	106	98.3	190	130
ISO 100-K to 4" ASA	C10009154	106	98.3	229	130
ISO 160-K to 4" ASA	C10011064	106	136	229	180
ISO 160-K to 6" ASA	C10011066	112	148	279	180

ISO-K BELLOWS & PIPELINES

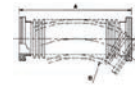
PRECISION PLUS OFFERS THE ISO-K ROTATABLE COLLAR FLANGE AS OUR STANDARD. THIS FLANGE EASILY CONNECTS WITH THE ISO-F BOLTED FLANGE USING A VARIETY OF CLAW CLAMS OR A ROTATABLE FLANGE KIT. WE ALSO OFFER A VARIETY OF ADAPTORS SO YOU CAN CONNECT YOUR 'ISO' PIPEWORK TO OTHER TYPE FLANGES. ISO-K COLLAR ROTATABLE FLANGE.

FLEXIBLE BELLOWS, ISO-K (COLLAR ROTATABLE) 316L STAINLESS



SIZE	PART No.	DIMENSIONS (mm)	
		A	B
ISO 63-K	C10007670	106	127
ISO 80-K	C10008028	106	127
ISO 100-K	C10009670	107	127

FLEXIBLE PIPELINE, ISO-K (COLLAR ROTATABLE) 316L STAINLESS



SIZE	PART No.	DIMENSIONS (mm)			
		A	B	C	D
ISO ISO63-K x 250mm	C10007285	250	140	360	0.4
ISO ISO63-K x 500mm	C10007286	500	140	360	0.4
ISO ISO63-K x 750mm	C10007288	750	140	360	0.4
ISO ISO63-K x 1000mm	C10007287	1000	140	360	0.4
ISO ISO80-K x 250mm	C10008025	250	160	420	0.4
ISO ISO80-K x 500mm	C10008026	500	160	420	0.4
ISO ISO80-K x 750mm	C10008024	750	160	420	0.4
ISO ISO80-K x 1000mm	C10008027	1000	160	420	0.4
ISO ISO100-K x 250mm	C10009285	250	200	550	0.3
ISO ISO100-K x 500mm	C10009286	500	200	550	0.3
ISO ISO100-K x 750mm	C10009288	700	200	550	0.3
ISO ISO100-K x 1000mm	C10009287	1000	200	550	0.3

B - Minimum bend radius, static
C - Minimum bend radius, dynamic
D - Maximum operating pressure, bar gauge



PRECISION

VACUUM PARTS

Plus

Contents Page

Fittings

Shop Online @ PrecisionPlus.com!



*THIS PAGE IS
INTENTIONALLY LEFT BLANK*