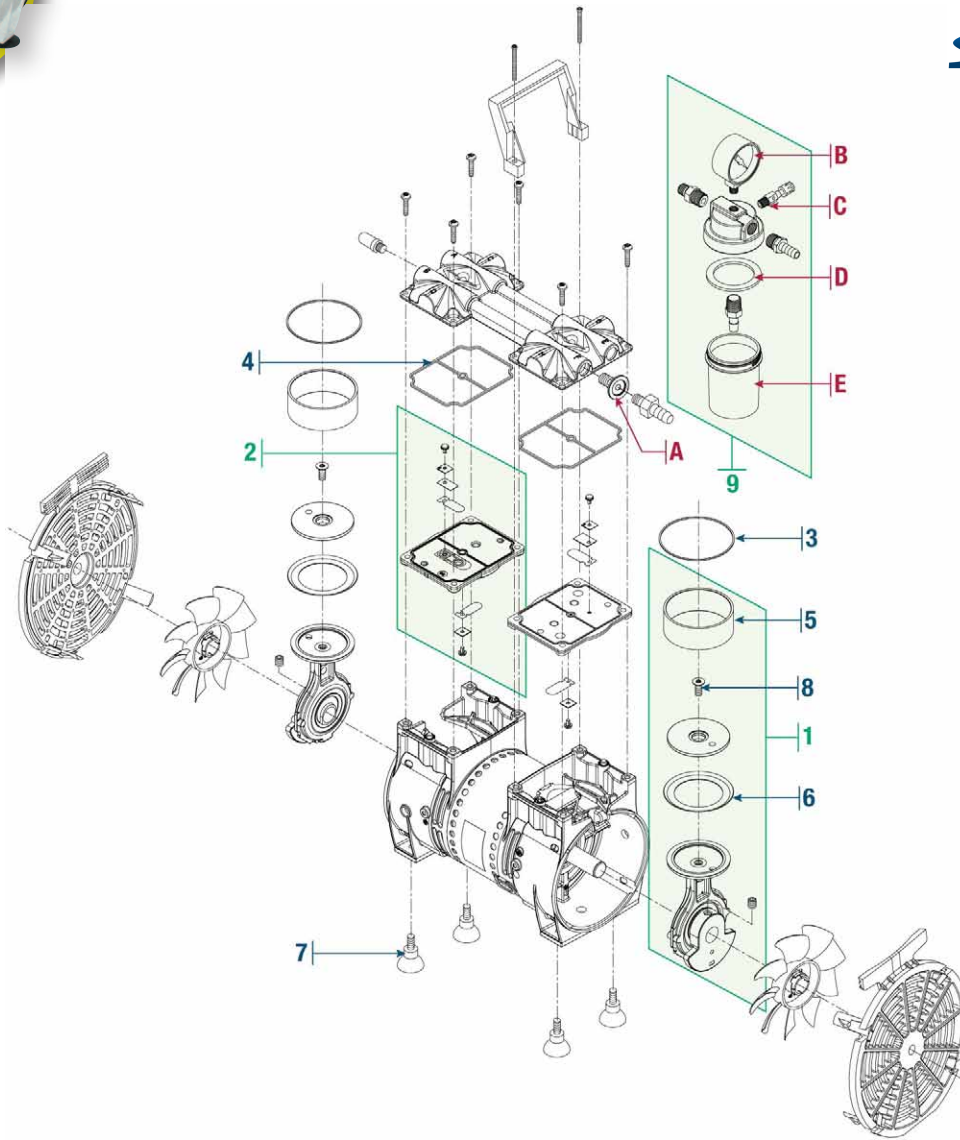


# Standard Duty Dry Vacuum Pumps

## WOB-L® Models 2561/2563



for more info [CLICK HERE](#)  
**Ideal**  
 vacuum products  
[www.idealvac.com](http://www.idealvac.com)



### Comprehensive Repair Kits for Models 2561/2563

ID	Qty.	CAT. No.	Description	Service Kit CAT. No. 2563K-03	Gasket Kit CAT. No. 2567K-04	Feet Service Kit CAT No. 2500K-04
1	2	2563K-01	Connecting Rod Assembly	----	----	----
2	2	2567K-02	Valve Plate Ass'y Kit	2	----	----
3	2	Note 1	O-Ring Cylinder	2	2	----
4	2	Note 1	Gasket Seal	2	2	----
5	2	Note 1	Cylinder Sleeve	2	----	----
6	6	Note 1	Piston Cup	2	2	----
7	4	Note 1	Rubber Suction Feet	----	----	4
8	2	Note 1	Retainer Screw	2	2	----

### Individual Spare Parts for Models 2561B-50 /2561C-50/2561C-56

ID	Qty.	Part Number	Description
A	1	51-4354	NW 25 x 1/4" NPT with I.D. 1/4" NPT thread
9	1	2585K-50	Vacuum Regulator Kit with Inlet Separator Jar
B	1	726021	Vacuum Gauge, in. Hg, cm Hg
B	1	726024	Vacuum Gauge - mbar/kPa
C	1	61-5142	Regulating Valve (without Knob #61-5148)
D	1	61-9772	Jar Gasket - PTFE Fluoroelastomer
E	1	1415B	Glass Jar, Inlet Trap
E	1	1415C	Plastic Jar, Inlet Trap

Note 1. These parts are not available separately, but are supplied in the repair kits.