

2 iH Dry pump - pump module parts list

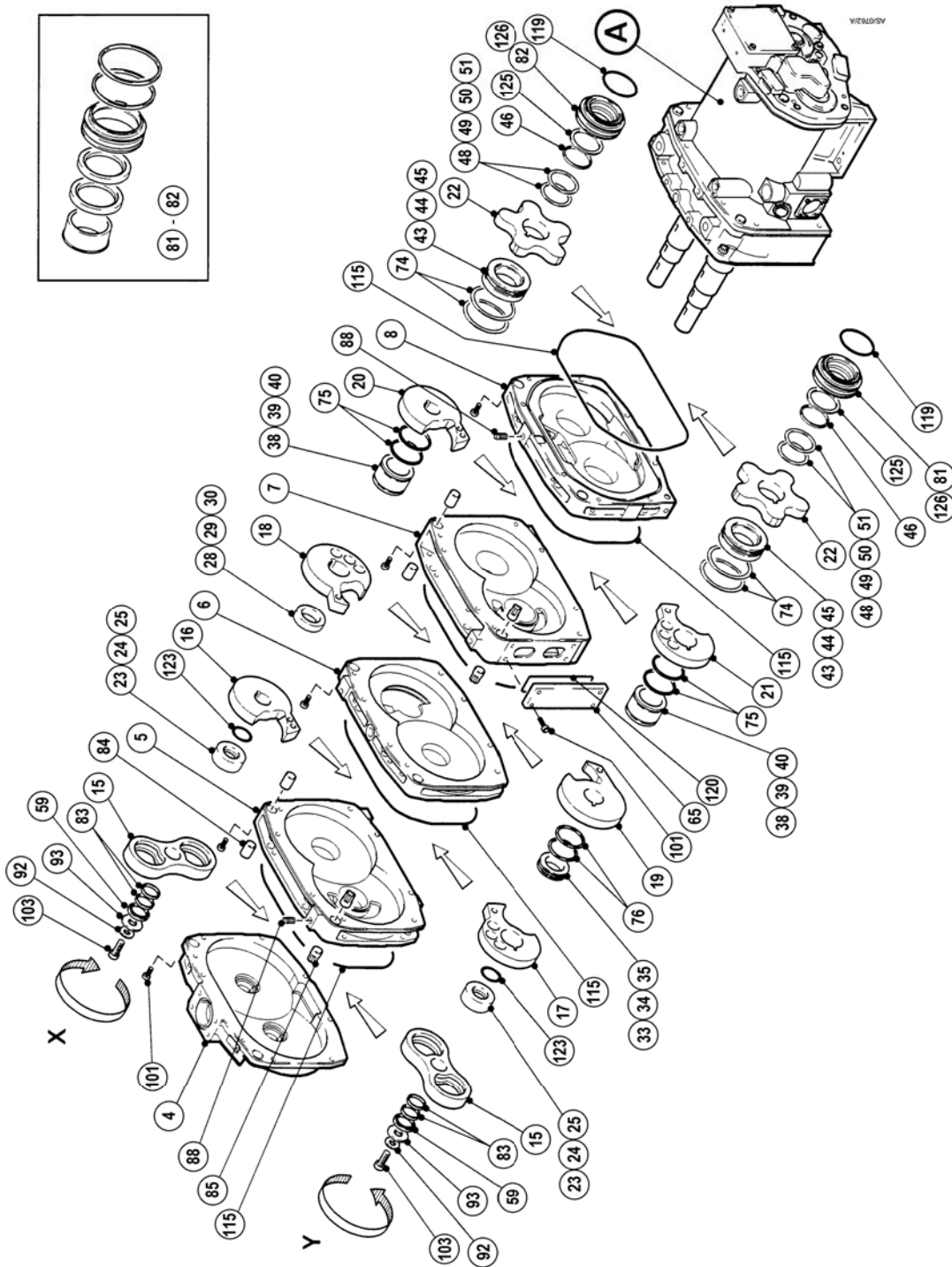


Figure 1 - iH Dry pump - pump module

iH Dry pump - pump module parts list

Table 1 - iH Dry pump - pump module common items list

Ref.	Description	Product Quantity	Packed Quantity	Item Number	Kit No.(s)
A	Motor assembly	1		see Table 2	
4	H.V. stator (Spares kit)	1	1	A40801710	
5	2nd stage stator (Spares kit)	1	1	A40801711	
6	3rd stage stator (Spares kit)	1	1	A40801712	
7	4th stage stator (Spares kit)	1	1	A40801713	
8	L.V. stator (Spares kit)	1	1	A40819714	
15	H.V. rotor (Spares kit)	2	1	A40801723	
16	2nd stage rotor 'X' (Spares kit)	1	1	A40801724	
17	2nd stage rotor 'Y' (Spares kit)	1	1	A40801725	
18	3rd stage rotor 'X' (Spares kit)	1	1	A40801726	
19	3rd stage rotor 'Y' (Spares kit)	1	1	A40801727	
20	4th stage rotor 'X' (Spares kit)	1	1	A40801728	
21	4th stage rotor 'Y' (Spares kit)	1	1	A40801729	
22	L.V. rotor (Spares kit) *	2	1	A40801730	
23	2nd stage sleeve N (Pack = 10)		10	A40801731	
24	2nd stage sleeve N- (Pack = 10)		10	A40801768	
25	2nd stage sleeve N+ (Pack = 10)		10	A40801769	
28	3rd stage sleeve 'X' N (Pack = 10)		10	A40801733	
29	3rd stage sleeve 'X' N- (Pack = 10)		10	A40801770	
30	3rd stage sleeve 'X' N+ (Pack = 10)		10	A40801771	
33	3rd stage sleeve 'Y' N (Pack = 10)		10	A40801734	
34	3rd stage sleeve 'Y' N- (Pack = 10)		10	A40801772	
35	3rd stage sleeve 'Y' N+ (Pack = 10)		10	A40801773	
38	4th stage sleeve N (Pack = 10)		10	A40801735	
39	4th stage sleeve N- (Pack = 10)		10	A40801774	
40	4th stage sleeve N+ (Pack = 10)		10	A40801775	
43	L.V. stage sleeve N (Pack of 10)		10	A40801780	
44	L.V. stage sleeve N+ (Pack of 10)		10	A40801781	
45	L.V. stage sleeve N- (Pack of 10)		10	A40801782	
46	MSE seal retainer (Pack of 10)	2	10	A40801783	
48	Shim 0.07 thick (Pack of 10)		10	A40801757	
49	Shim 0.10 thick (Pack of 10)		10	A40801758	
50	Shim 0.125 thick (Pack of 10)		10	A40801759	
51	Shim 0.04mm thick (Pack of 30)		30	A40801778	
59	Clamping disc (c stl)	2			1
65	Blanking plate, scrubber port (c iron)	1	1	A40801052	
74	Sealing ring (68mm dia)	4	10	A40802785	
75	Piston ring 64 (Pack of 10)	4	10	A40801755	
76	Piston ring 57 (Pack of 10)	2	10	A40801756	
81	Rotary cartridge seal R.H. (c stl)	1			1
82	Rotary cartridge seal L.H. (c stl)	1			1
83	Locking element 32 x 36 (c stl)	2			1
84	Dowel pin ϕ 20mm (c stl)	4	1	A22425004	
85	Acorn dowel ϕ 20mm (c stl)	4	1	A22425007	
88	1/8 inch taper pressure plug (c stl)	2	1	H03517004	
92	Disc spring od 29 x id 13 x 3 (c stl)	2			1
93	Disc spring od 39 x id 17 x 4 (c stl)	2			1

Table 1 - iH Dry pump - pump module common items list (continued)

Ref.	Description	Product Quantity	Packed Quantity	Item Number	Kit No.(s)
101	Cap hd screw M8 x 25 (c stl) ENP	35			
103	Cap hd screw HT NI M12 x 45 G12-9	2	1	218092496	
115	'O' ring, metric special (Fluoro)	5			1
119	'O' ring (Fluoro)	2			1
120	'O' ring (Fluoro)	1			1
123	'O' ring 1.234 id x 0.139 section (Fluoro)	2			1
125	MSE seal	2			1
126	'O' ring 80.0 id x 2.5 section (Fluoro)	2			1

* LV rotors marked with between 1 and 5 dots on the lobes should be replaced.

This page has been intentionally left blank.

3 iH Dry pump - drive module parts list

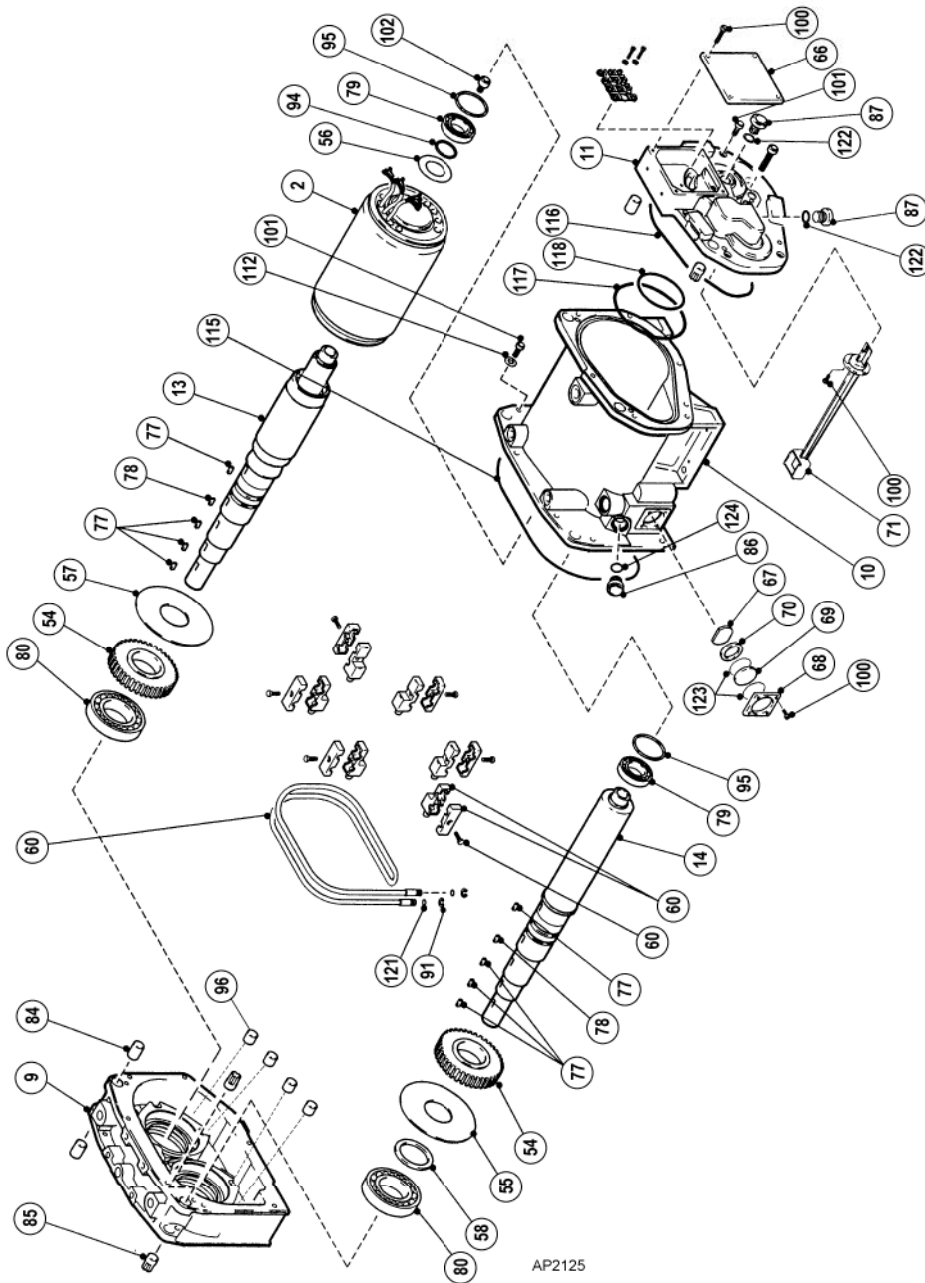


Figure 2 - iH Dry pump - drive module assembly

Table 2 - iH Dry pump - drive module common items parts list

Ref.	Description	Product Quantity	Packed Quantity	Item Number	Kit No.(s)
2	Canned motor	1	1	A07113711	
9	Headplate (Spares kit) **	1	1	A40801715	
10	Gear cover (Spares kit) *	1	1	A40801786	
11	End cover (Spares kit)	1	1	A40801717	
13	'X' shaft (Spares kit)	1	1	A40801720	
14	'Y' shaft (Spares kit)	1	1	A40301722	
54	Timing gear (Matched pair) #	2	2	A22903759	
55	144 dia Oil thrower Pk 10	1	10	A40801747	
56	63 dia Oil thrower Pk 10	1	10	A40801748	
57	154 dia Oil thrower Pk 10	1	10	A40801760	
58	Gear spacer 'Y' Pk 5	1	5	A40801749	
60	Cooling coil	1	1	A40801702	
66	Terminal box lid (alum)	1	1	A40801051	
67	Sight glass reflector (st stl) PK20	1	20	A25976701	
68	Sight glass bezel (plas) yellow s. screen PK10 *	1	10	A20416706	
69	Sight glass (glass) PK20	1	20	A29201704	
70	Compression ring (st stl) PK20	1	20	A27820708	
71	Oil feeder PK10	1	10	A25908704	
77	Non std 7/8 inch woodruff key	8	25	A24301740	
78	Non std 7/8 inch woodruff key tapped	2			1
79	Ball bearing (Std pre-prepared)	2			2/3
80	Ceramic hybrid bearing ##	2			5
84	Dowel pin ϕ 20mm (c stl)	3	1	A22425004	
85	Acorn dowel ϕ 20mm (c stl)	3	1	A22425007	
86	1/2 inch BSP plug (m stl)	1	1	A26002046	
87	3/8 inch BSP plug (m stl)	2	1	A26002048	
91	Ext circlip od 18.2 x id 7.6 (c stl)	2			2/3
94	Waved spring od 42 x id 35 (c stl)	1			2/3
95	Waved spring od 62 x id 55 (c stl)	2			2/3
96	Magnet -14mm diameter (2)	4	50	A24803704	
100	Pan hd screw M5 x 10 (st stl)	10			
101	Cap hd screw M8 x 25 (c stl)	17			
102	Cap hd screw HT NI M12 x 25 G12-9	1	1	218092492	
112	Spring washer M8 (c stl)	7			
115	'O' ring, metric special (fluoro)	1			2/3
116	'O' ring, 2155-35 metric special (fluoro)	1			2/3
117	'O' ring, metric special (fluoro)	1			2/3
118	'O' ring, metric special (fluoro)	1			2/3
121	O' ring, (fluoro)	2			2/3
122	'O' ring 19.1 id x 1.6 section (fluoro)	2			2/3
123	'O' ring 1.234 id x 0.139 section (fluoro)	2			2/3
124	'O' ring 0.862 id x 0.103 section (fluoro)	1			2/3

* Note item 68 fitted to gear covers dated 1999+ (etched 9.....)

Gearcovers pre 1999 should be replaced with item 68 also to be replaced.

** Magnets fit headplates dated 1999+ (etched 9.....)

headplates pre 1999 should be replaced.

Timing gears not marked A, B, C or D should be replaced.

For steel bearings use Kit 2; for ceramic bearings use Kit 5.

4 Maintenance kits

The maintenance kits available for the iH dry pump are listed in Table 3.

Table 3 - Maintenance kits

Tables 1-2 Cross Reference	Description	Item Number
Kit 1	Pump module spares kit	A40801815
Kit 2	Drive service kit HCDP steel	A40801805
Kit 3	S kit HCDP less ceramic brg's	A40801807
Kit 5	S kit HCDP caged ceramic brg's	A40801818

Table 4 - Kit 1 : Pump module spares kit A40801815

Ref.	Description	Quantity
59	Clamping disc	2
78	Non std 7/8 inch woodruff key tapped	2
81	Rotary cartridge seal R.H.	1
82	Rotary cartridge seal L.H.	1
83	Locking elements 32 x 36	2
92	Disc spring 29 od x 13 id x 3 sect	2
93	Disc spring 39 od x 17 id x 4 sect	2
115	'O' ring 2780-35 metric special (fluoro)	5
119	'O' ring 0495-30 (fluoro)	2
120	'O' ring 0945-30 (fluoro)	1
123	'O' ring 1.234 id x 0.139 sect (fluoro)	2
125	MSE seals (fluoro)	2
126	'O' ring 80.0 id x 2.5 section (fluoro)	1
421*	'O' ring metal 31.41 od x 2.38 sect (metal)	1
843*	'O' ring 1.0 inch id x 0.21 sect (fluoro)	1
881*	'O' ring 0495--30 (fluoro)	1

* Usage of item not depicted in this manual. See publication A553-81-845 'iH System and Accessories' for further details.

Table 5 - Kit 2 : Drive service kit A40801805

Ref.	Description	Quantity
79	Ball bearing 6206 C3=10 (Std pre-prepared)	2
80	Ball bearing 6211 ZC3=8 (Std pre-prepared)	2
91	Ext circlip 18.2 od x 7.7 id	2
94	Waved spring 42 od x 35 id	1
95	Waved spring 62 od x 55 id	2
115	'O' ring 2780-35 metric special (fluoro)	1
116	'O' ring 2155-35 metric special (fluoro)	1
117	'O' ring 1310-35 metric special (fluoro)	1
118	'O' ring 79.5 id x 3.0 sec (fluoro)	1
121	'O' ring 0091-16 (fluoro)	2
122	'O' ring 19.1 id x 1.6 sect (fluoro)	2
123	'O' ring 1.234 id x 0.139 sect (fluoro)	2
124	'O' ring 0.862 od x 0.103 sect (fluoro)	2
335*	'O' ring 0061-16 (fluoro)	2
336*	'O' ring 0091-16 (fluoro)	2
337*	'O' ring 0116-24 (fluoro)	2
338*	'O' ring 0146-24 (fluoro)	1
453*	Gearbox purge filter	1
454*	Non-return valve float	1
475*	'O' ring 1.234 x 0.39 (fluoro)	1
476*	'O' ring 0146-24 (fluoro)	1
767*	'O' ring 6.1 id x 1.6 sect	1

* Usage of item not depicted in this manual. See publication A553-81-845 'iH System and Accessories' for further details.

Table 6 - Kit 3 : S kit HCDP less ceramic brg's A40801807

Ref.	Description	Quantity
79	Ball bearing 6206 C3=10 (Std pre-prepared)	2
91	Ext circlip 18.2 od x 7.7 id	2
94	Waved spring 42 od x 35 id	1
95	Waved spring 62 od x 55 id	2
115	'O' ring 2780-35 metric special (fluoro)	1
116	'O' ring 2155-35 metric special (fluoro)	1
117	'O' ring 1310-35 metric special (fluoro)	1
118	'O' ring 79.5 id x 3.0 sec (fluoro)	1
121	'O' ring 0091-16 (fluoro)	2
122	'O' ring 19.1 id x 1.6 sect (fluoro)	2
123	'O' ring 1.234 id x 0.139 sect (fluoro)	2
124	'O' ring 0.862 od x 0.103 sect (fluoro)	2
335*	'O' ring 0061-16 (fluoro)	2
336*	'O' ring 0091-16 (fluoro)	2
337*	'O' ring 0116-24 (fluoro)	2
338*	'O' ring 0146-24 (fluoro)	1
453*	Gearbox purge filter	1
454*	Non-return valve float	1
475*	'O' ring 1.234 x 0.39 (fluoro)	1
476*	'O' ring 0146-24 (fluoro)	1
767*	'O' ring 6.1 id x 1.6 sect	1

* Usage of item not depicted in this manual. See publication A553-81-845 'iH System and Accessories' for further details.

Table 7 - kit 5 : S kit HCDP caged ceramic brg's A40801818

Ref.	Description	Quantity
80	Caged hybrid A/C bearing	2