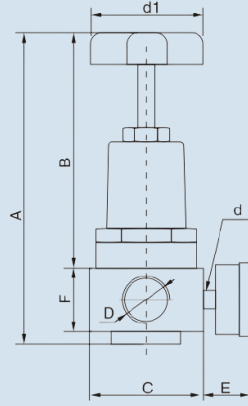




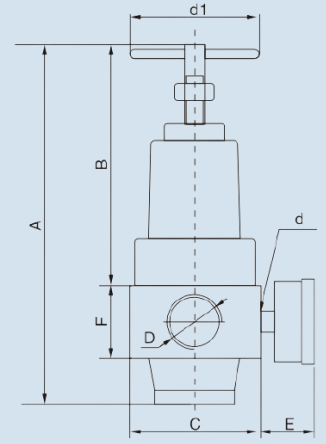
## TY Series High Pressure Air Regulator Unit



QTYH-15 (1/4", 3/8", 1/2")

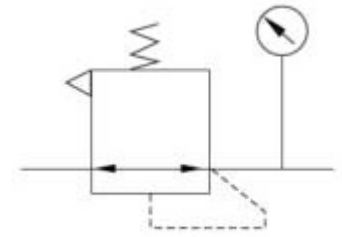


QTYH-25 (3/4", 1")



### SPECIFICATIONS

Function :	Air Regulator Unit
End Connection :	Screwed
Body Material :	Aluminium Die Cast
Valve Assembly & Seal :	Brass, NBR
Media :	Compressed Air
Proof Pressure :	Up to 40 Bar
Regulator Construction ::	Needle Type



Circuit Diagram

### DIMENSION

Port	A	B	C	D	E	F	d	d1
1/4"	145	105	55	1/4"*	33	30	1/4"	59
3/8"	145	105	55	3/8"*	33	30	1/4"	59
1/2"	145	105	55	1/2"	33	30	1/4"	59
3/4"	220	150	75	3/4"*	33	45	1/4"	100
1"	220	150	75	1"	33	45	1/4"	100

\* With Adaptor

### TECHNICAL DATA

Model No.	Body Size	PortSize#	Guage Port	Fluid	Temperature	WorkingPr. Range	Proof Pressure
QTYH-15-08	15	1/4" BSP	1/4"	Air	5 to 60 <sup>0</sup> C	0.5 to 35 Bar	40 Bar
QTYH-15-10	15	3/8" BSP	1/4"	Air	5 to 60 <sup>0</sup> C	0.5 to 35 Bar	40 Bar
QTYH-15	15	1/2" BSP	1/4"	Air	5 to 60 <sup>0</sup> C	0.5 to 35 Bar	40 Bar
QTYH-25-20	25	3/4" BSP	1/4"	Air	5 to 60 <sup>0</sup> C	0.5 to 35 Bar	40 Bar
QTYH-25	25	1" BSP	1/4"	Air	5 to 60 <sup>0</sup> C	0.5 to 35 Bar	40 Bar

\* Condition : Under Standard Pressure, #Port Size: 1/4", 3/8", 3/4" with adaptor: