



SMART DOOR CONTACT SENSOR

The Smart Door Contact Sensor notifies the user and the door contact system in the event a door, window, or gate opens, and sends intrusion alerts. It provides the data in which smart homes and offices need for intelligent application and security management of the premises.

Smart Door Contact Sensor can be integrated with the user's smart access control solution and customized user platform.



INVISIBLE FUN STUDIO



SMART APPLICATIONS

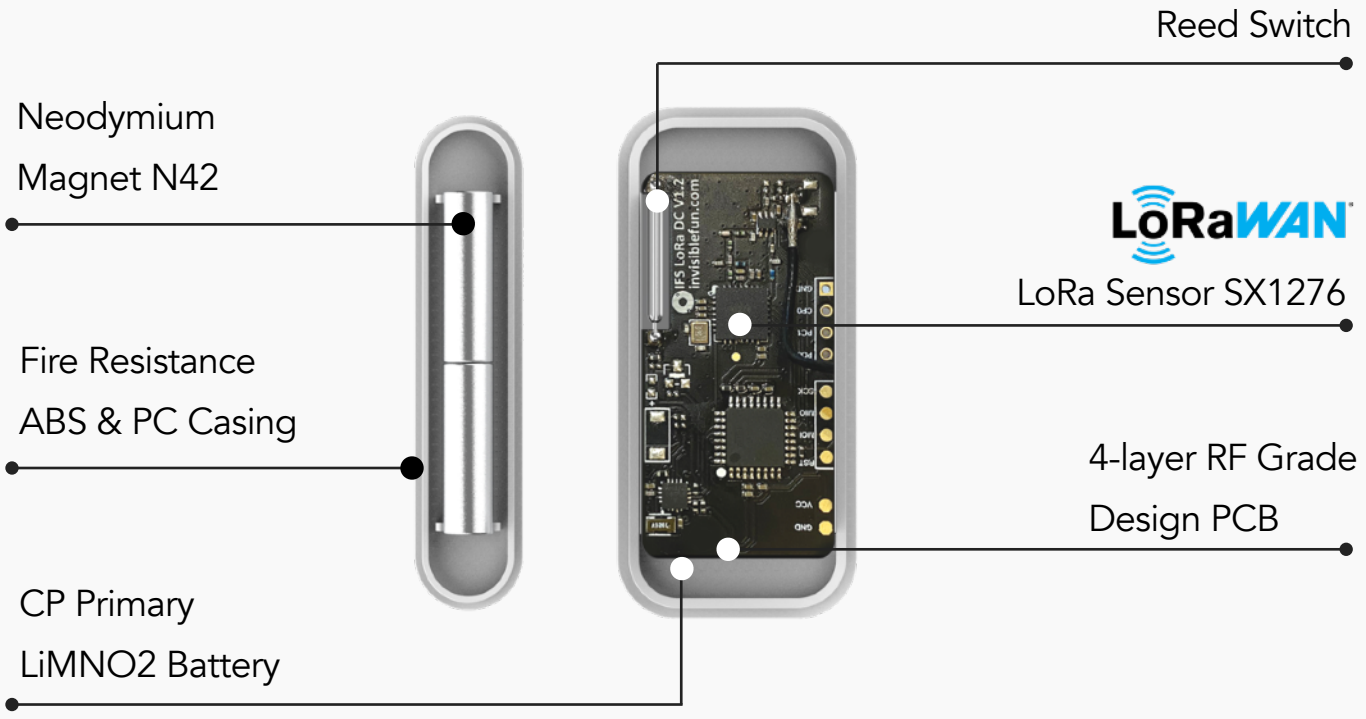
Commercial IOT Management | Smart Building Integration
Building Certification | Health & Well-being for Residential



FEATURES



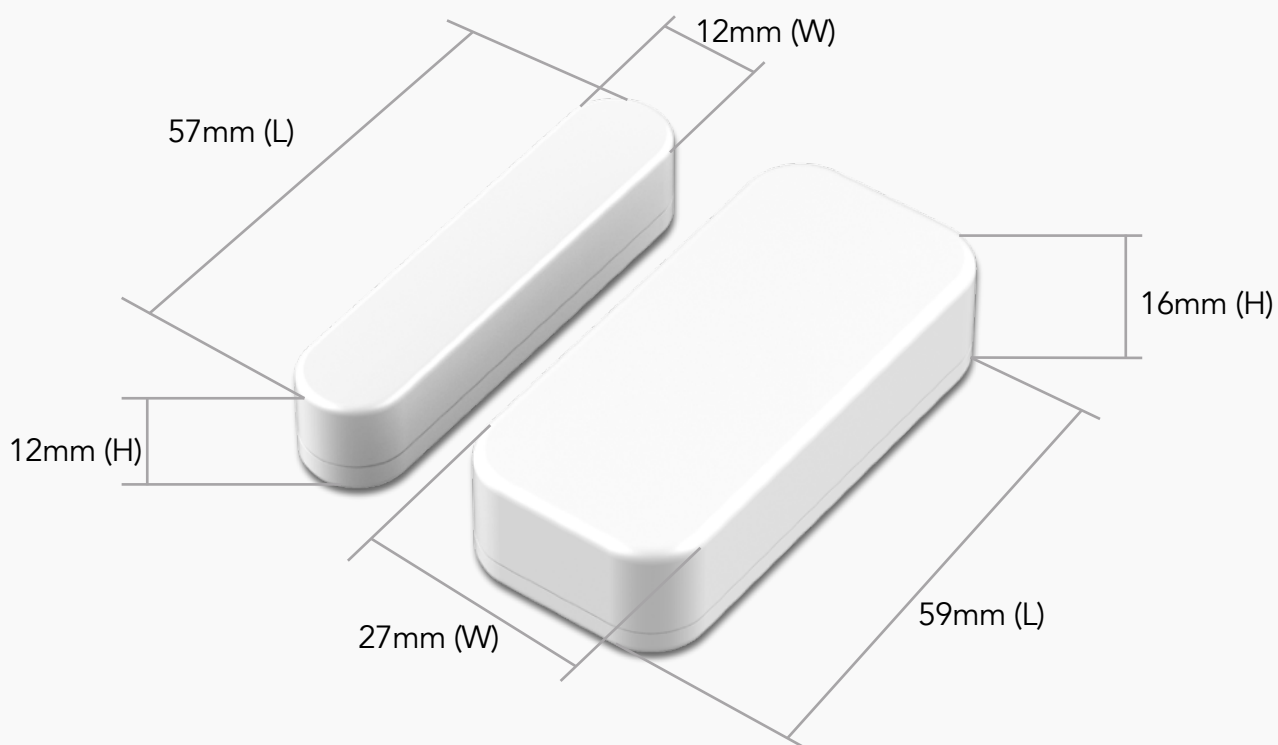
LoRaWAN Technology | Endurance Battery | Stable IOT Networking
Tiny Design | Accurate Magnetic Contact | Data Transmission



PRODUCT DIMENSION

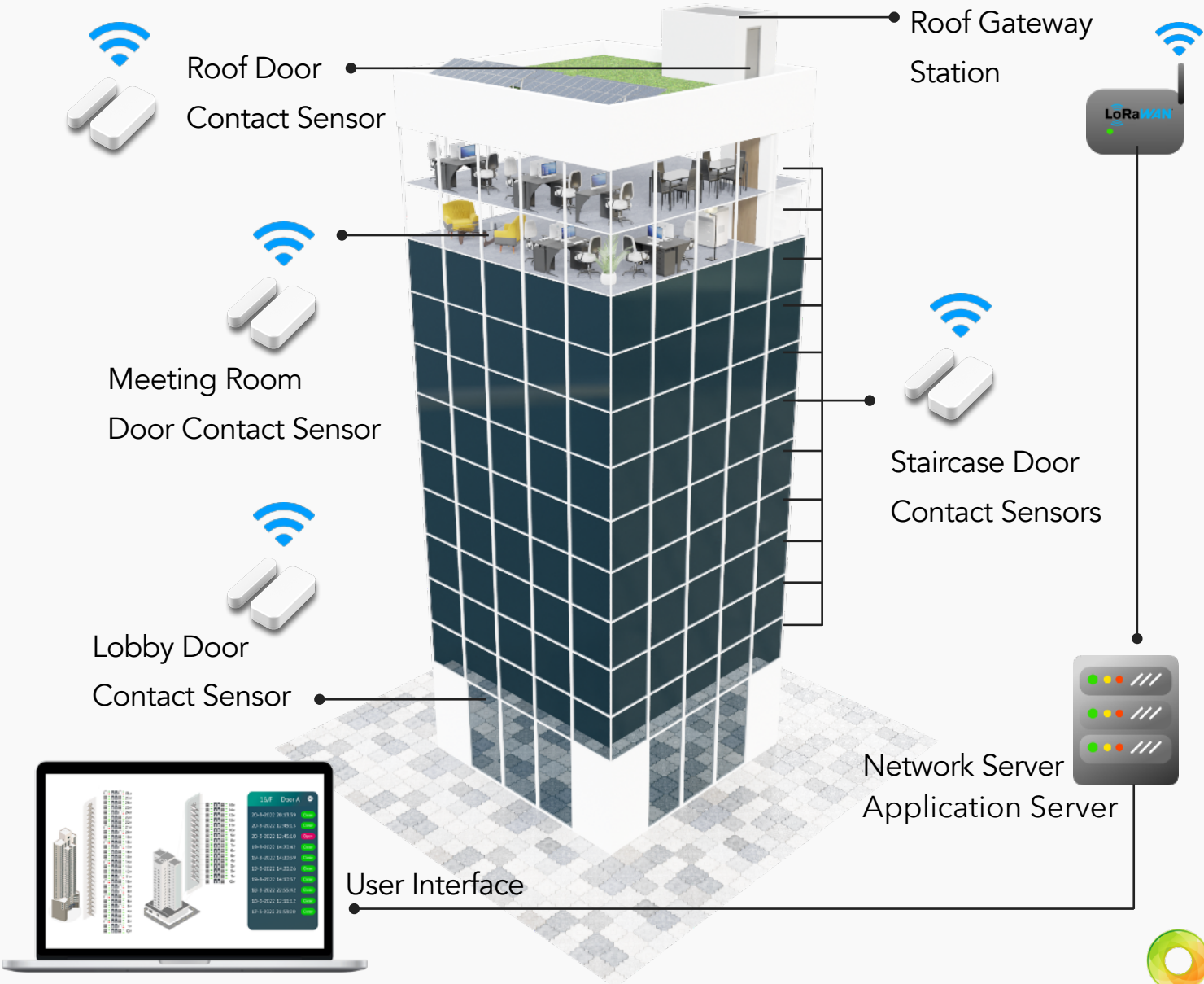
INSTALLATION

Quick setup | Adhesive Installation
Flexible Application | Aesthetic Design



COMMERCIAL APPLICATION

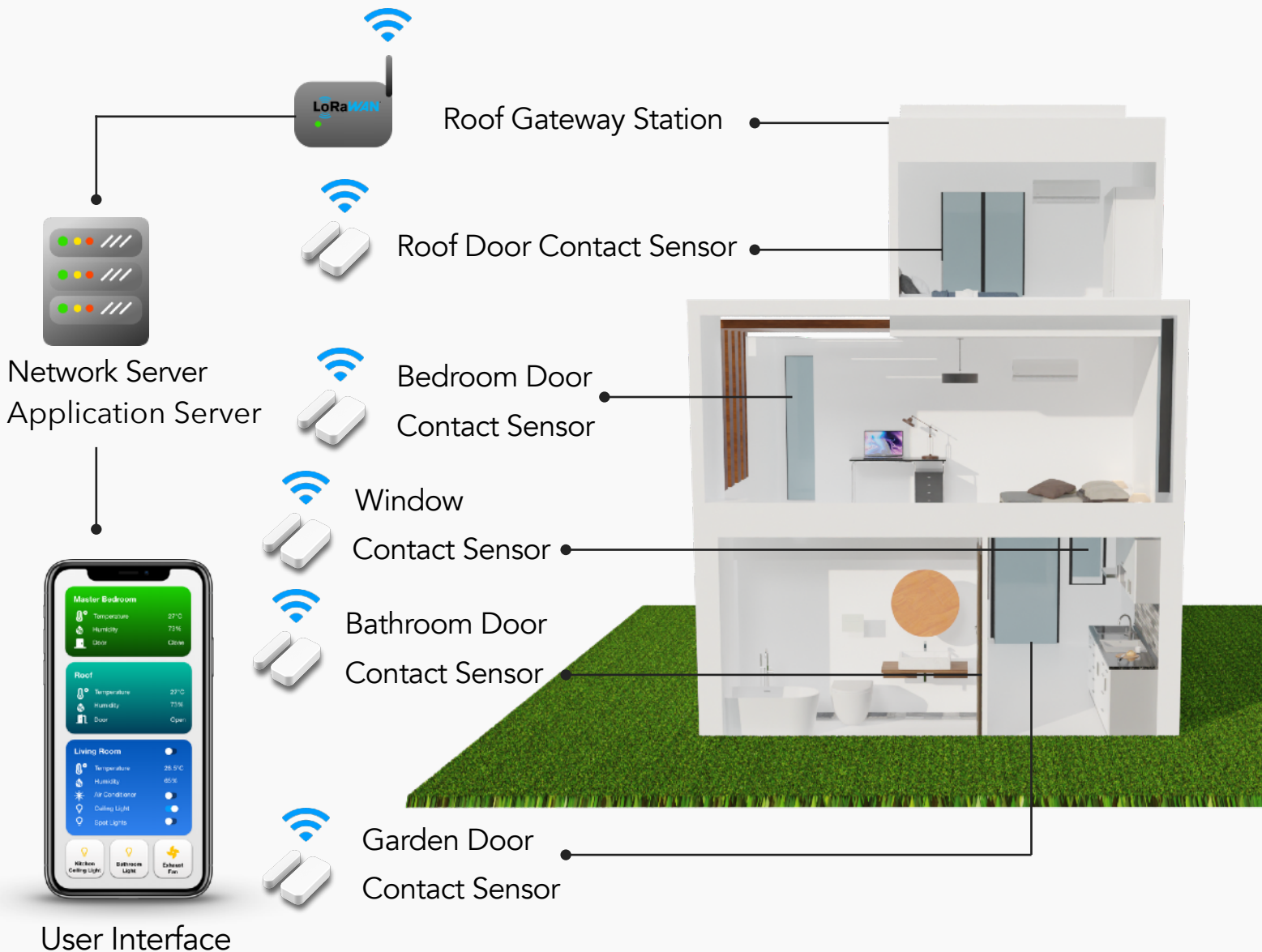
COMMERCIAL BUILDING SMART NETWORK



RESIDENTIAL APPLICATION



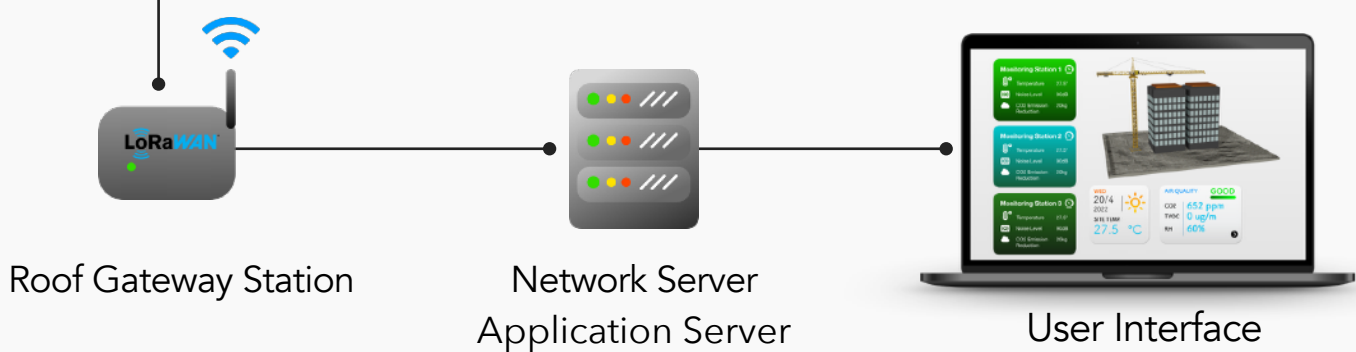
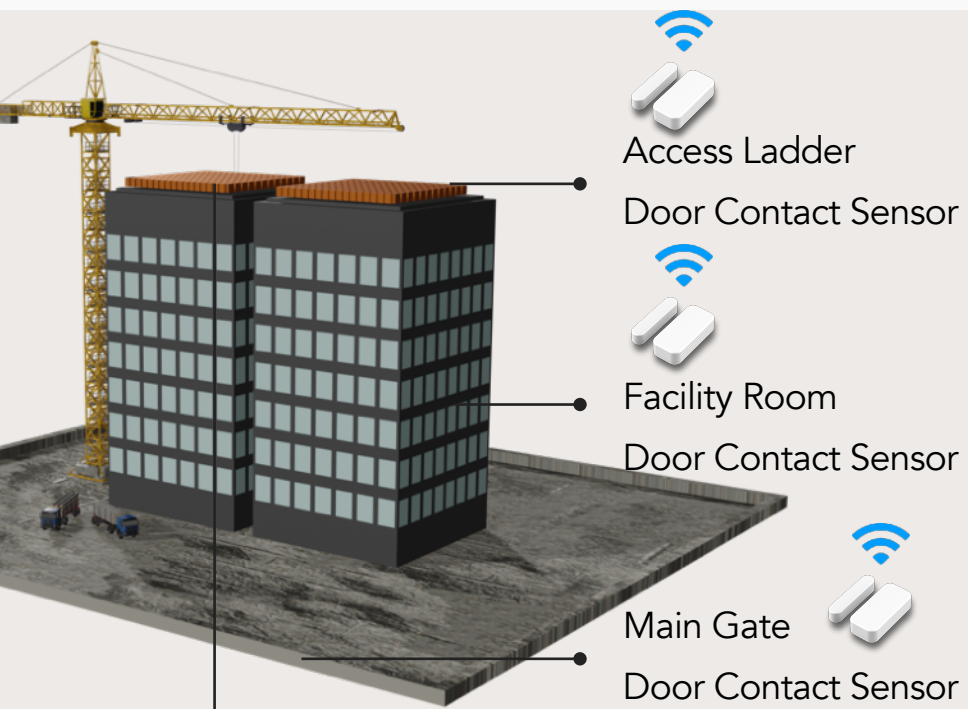
RESIDENTIAL BUILDING SMART NETWORK



INDUSTRIAL APPLICATION



INDUSTRIAL BUILDING SMART NETWORK



SPECIFICATION

The strong persistence of batteries allow the Smart Door Contact Sensor to perform reliable data transmission. The Smart Door Contact Sensor is compatible with a wide-range of LoRaWAN bands. It allows users to setup IOT networks in various spots.



FUNCTIONALITY

PARTICULARS

Input Power	CP502440 Battery: 3.0V, 1200mAh
Working Voltage	DC 2.3V - 3.6V
Standby Current	40uA/3.0V
Maximum Operating Current	2.5mA/3.0V
Low Voltage Threshold	2.5V
Battery Voltage Measurement Accuracy	±0.1V
Frequency Range	868MHz - 928MHz
TX Power	1US915 20dbm, AS923 16dbm AU915 20dbm, EU868 16dbm, KR920 14dbm
Receiving Sensitivity	-121 dBm (FSK, Frequency deviation=5kHz, Bit Rate=1.2kbps)
Antenna Type	Built-in antenna
Communication Distance	Up to 10km (Visible liner obstacle-free transmission distance, actual transmission distance depends on the environment)
Data Transfer Rate	0.3kbps - 50kbps
Modulation	LoRa/FSK (Note: Choose one of them) EU863-870,US902-928,AU915-928,KR920-923,A S923-1,AS923-2,AS923-3
Supportable LoRa WAN Band	(Note: The frequency band is optional and needs to be configured before shipment)
Dimension of Main Body	27mm (W) x 59mm (L) x 16mm (H)
Dimension of Magnet	12mm (W) x 57mm (L) x 12mm (H)
Product Weight	26.2g
Operating Temperature	-40°C - 115°C
Environmental Humidity Range	<100% RH (No condensation)
Storage Temperature	-55°C - 125°C





SMART SENSE SERIES



Air Quality
Sensor



Climax Sensor



Door
Contact Sensor



Leakage
Detection Sensor



Soil Sensor

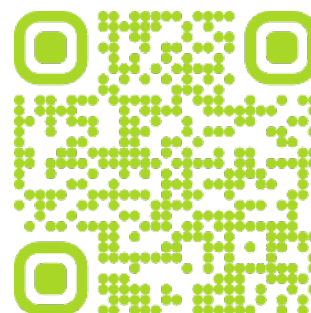


INVISIBLE FUN STUDIO

Unit 608, Block 2, Yip On Factory Building, 1-2
Wang Hoi Road, Kowloon Bay, Hong Kong

+852 3565 6050

Copyright © 2022



LEARN MORE 