

JULIAN CHICHESTER





Contemporary design
inspired by tradition
and craft

Regency sofa shown in antique silver. Covered in Osborne & Little Ithaki F6480-04



Julian Chichester Designs was founded in 1988 by furniture expert Richard Forwood and designer Julian Chichester. Their recreation of high quality 18th and 19th century garden furniture for the UK market has naturally progressed to interior designs.

INTRODUCTION	2
BEDS	6
BEDSIDES	12
BOOKCASES	16
CABINETS	18
CHAIRS	32
CHEST OF DRAWERS	40
COFFEE TABLES	46
CONSOLE TABLES	52
DESKS & DRESSING TABLES	58
DINING TABLES	66
LIGHTING	74
MIRRORS	80
OCCASIONAL TABLES	88
SCREENS	102
SOFAS	104
HOTELS & CONTRACT	108
FINISHES	110

Creating timeless & furniture

During the last decade, Julian Chichester has created and built stunning furniture that derives its inspiration from the English classic tradition whilst adding a fresh, modern twist. The furniture has the personality to hold its own in any setting – it succeeds equally well in a Manhattan loft or an elegant Shoreditch townhouse.

The company has expanded its manufacturing operation through its continuing success in developing a range of ‘must-have’ classic and contemporary designs. The company has an enviable international reputation for quality craftsmanship, innovative design and attractive, unusual, high quality finishes and decoration.

‘A great source of contemporary furniture with a sculptural aesthetic’

Carole Annett, Retail and Promotions Editor
House & Garden Magazine





Desire our look...
but want it *tailored* to your requirements?

bespoke

Julian Chichester has been making bespoke furniture for over 20 years. Our in-house design & manufacturing capability allows us to exceed your expectations from drawings through to execution.

If one of our designs needs to be a little larger or you crave something no one else has... just talk to us.



The
Colourist
collection

A selection of favourite Julian Chichester designs finished in the finest quality lacquer, in any colour you choose!

Select from endless colours by NCS, RAL or select paint ranges to make your own statement piece. Email sales@julianchichester.com for further details. Lead time approximately 5 weeks.

<http://www.ncscolour.co.uk>
<http://www.ralcolor.com>

beds



Bespoke Demi Four Poster Bed finished in Jade Lacquer NCS S4550



DEMI FOUR POSTER BED

left & above

Unique demi four poster bed combining classical proportions with a pale gold frame and eglomisé headboard.

5ft Bed W:1735 D:2192 H:1660 mm

6ft Bed W:1960 D:2192 H:1660 mm

Bespoke sizing & finishing on request



The Kensington Hotel www.doylecollection.com

FOUR POSTER BED

above

A magnificent ebonised four poster bed with entwining vine motifs in gold leaf climbing the posts. The headboard has a classical broken pediment with gilded detailing.

5ft Bed W:1795 D:2152 H:2509 mm

6ft Bed W:2000 D:2152 H:2509 mm

Bespoke sizing & finishing on request

TEMPLE BED

opposite, above

Stunning bed with eglomisé head and footboard edged in either aged silver or old gold.

5ft Bed W:1820 D:2300 H:1600 mm

5ft Bed W:2100 D:2300 H:1600 mm

5ft H'board W:1845 D:200 H:1610 mm

6ft H'board W:2130 D:200 H:1610 mm

Bespoke sizing & finishing on request

ANNA HEADBOARD

opposite, below

Beautiful fretwork headboard with an eglomisé backing. Headboard attaches to wall and requires a bed frame. Also shown in custom wood finish, special order only.

5ft H'board W:1621 D:100 H:1868 mm

6ft H'board W:2135 D:100 H:1789 mm

Bespoke sizing & finishing on request





BEATRICE BED

above

Antique mirrored four poster bed with distressed silver leaf detail. 5ft and 6ft are stock items.

5ft Bed W:1660 D:2170 H:2430 mm

6ft Bed W:1980 D:2170 H:2430 mm

Bespoke sizing & finishing on request



ETIENNE BED

(with Contessa Lamp, Galaxy Chandelier)

A stunning 4 poster bed fully clad in brass with tapering round posts and cast spiral finials. Finished with an upholstered headboard.

5ft Bed W:2006 D:2198 H:2559 mm

Customer's Own Material: 3m

GETTY BEDSIDE

below

An elegant bedside with variegated brown vellum on sculptured gilded legs with an eglomisé top. Vellum is a natural skin therefore colour variation is inevitable.

W:600 D:500 H:670 mm

TEMPLE 3-DRAWER BEDSIDE

opposite top left

Bedside table with three drawers, with verre eglomisé on all surfaces. Gold or antiqued silver leaf finish on the wooden frame. Chest of drawers also available.

W:660 D:430 H:760 mm

PIMLICO BEDSIDE

opposite top right

A stunning adaptation of an early Georgian design with a contemporary updated finish. Available in faux ebony with silver-plated handles. Chest of drawers also available.

W:500 D:450 H:700 mm

BRIGHTON BEDSIDE

opposite below left

This New York style bedside is plain or black mirrored on every surface with bevelled edges where panels adjoin. Wooden handles on drawers and tapered faux ebony wooden legs. Chest of drawers also available.

W:595 D:455 H:640 mm

TEMPLE 1 DRAWER BEDSIDE

opposite below right

Bedside table with one drawer and bottom shelf, with verre eglomisé on all surfaces. Gold or antiqued silver leaf finish on the wooden frame. Chest of drawers also available.

W:660 D:430 H:760 mm

bedsides







HOLLY BEDSIDE

above left
Part of the Colourist Collection, this pretty petite bedside has a decorative eglomisé top and finished to your specification. Select from endless colours by RAL or NCS. Shown here in NCS colour S:SO507-B Satin.
W:350 D:350 H:700 mm

LORENZO SIDE TABLE

above centre (with Pagoda Lamp)
An inspired and adapted mid-century one drawer side table / nightstand. Clad in faux shagreen with aged brass legs, drawer handles and inset detail.
W:540 D:510 H:640 mm

ALBERT BEDSIDE

above right
A tall thin narrow bedside table with tapered legs and a vellum drawer. Available in weathered grey oak. Vellum is a natural skin therefore colour variation is inevitable.
W:350 D:450 H:700 mm



FELIX BEDSIDE

right
A subtle ebonised stained fruitwood bedside with a single drawer on simple gilded steel legs.
W:600 D:450 H:660 mm

ANNA BEDSIDE

opposite top left
An adaption from our Anna collection, this single-drawer bedside table features fretwork over an eglomisé backing.
W:660 D:450 H:700 mm

2 DRAWER FRENCH COUNTRY BEDSIDE

opposite top right
Part of the Colourist Collection, this classic bedside has a decorative brass handles and finished to your specification. Select from endless colours by RAL or NCS.
W:585 D:410 H:635 mm



PERCY BEDSIDE

opposite below left
A unique concave bedside chest available in either weathered grey oak or ebonised oak with contrasting aged brass handles.
W:600 D:450 H:660 mm

REGENCY WAVE BEDSIDE

opposite below right
This stunning classically inspired bedside is from the Colourist Collection and finished to your specification. Select from endless colours by RAL or NCS. Shown here in NCS colour S:3055-R40B Matt Satin.
W:630 D:495 H:690 mm







CVB – BLACK VELLUM

EGL – VERRE EGLOMISÉ

PBV – BROWN VELLUM

VEL – PLAIN VELLUM

UNIVERSITY BOOKCASE*right*

Our university bookshelves are practical, clean lined and elegant, with fixed inset shelves. The frames have a beautifully gilded finish with a choice of inserts shown above right. Vellum is a natural skin therefore colour variation is inevitable.

Uni A W:1000 D:330 H:2390 mm

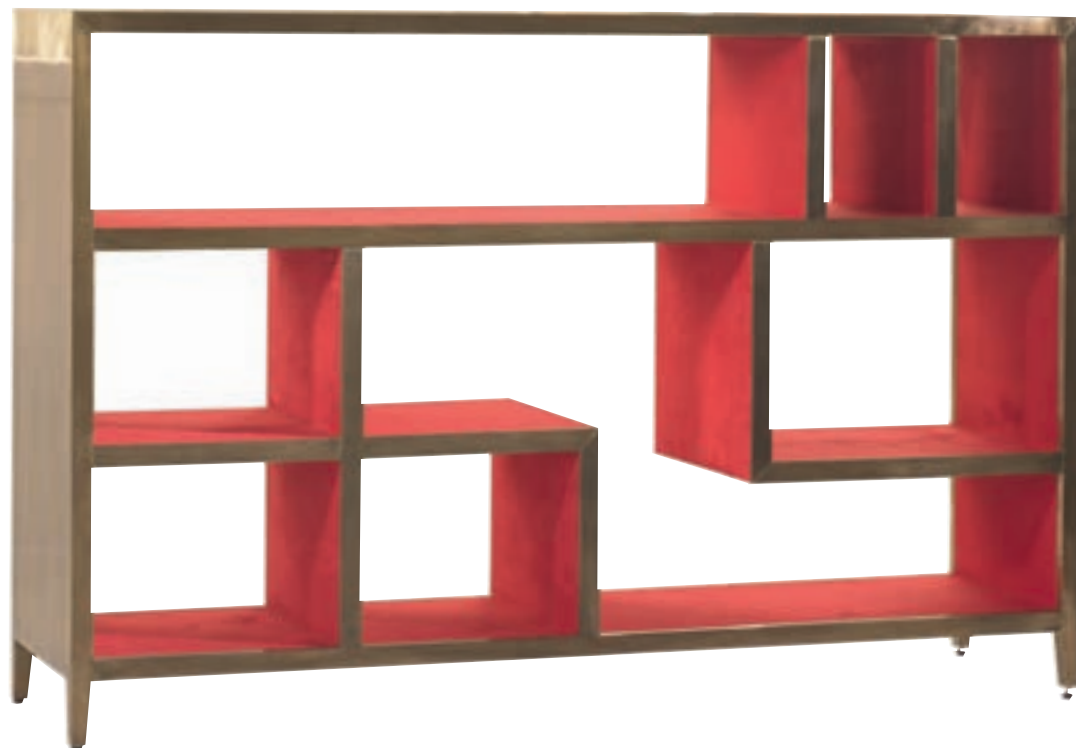
Uni B W:720 D:510 H:720 mm

Uni C W:690 D:330 H:1830 mm

HENRI BOOKCASE*front right*

A low, long, brass clad bookcase. The geometric, almost Chinoiserie, shelves have brass on the front edge and a contrasting red felt on the inside.

W:1300 D:330 H:850 mm



FRANK BOOKCASE

below

A beautifully made vellum covered bookcase with 5 adjustable shelves and a walnut veneered back. The contrast of vellum with wood is stunning. Vellum is a natural skin therefore colour variation is inevitable.

W:1070 D:400 H:2210 mm

CIRCLE BOOKCASE

right

A whimsical glazed fronted bookcase with upper and lower doors and five adjustable shelves. Available in either ebonised oak or bleached oak with either a distressed mirror front or with a painted interior and clear glass front.

W:1200 D:450 H:2400 mm

APHRODITE BOOKCASE

below right

A quirky freestanding bookcase with vellum clad shelves supported by an array of carved gesso 1930s female silhouettes on both sides. Vellum is a natural skin therefore colour variation is inevitable.

W:2000 D:400 H:1865 mm





cabinets



ROYERE TALL CABINET

opposite (with Percy the dog)

A collection of cabinets with a very 1940s feel. Large squares of the finest quality goatskin vellum, dyed to a marbled finish, are framed with brass and mounted into an ebonised frame. The handles are brass and the pieces are all lined with sycamore. Vellum is a natural skin therefore colour variation is inevitable.

W:1220 D:430 H:2360 mm

ROYERE LONG CABINET

above (with Almeria Table Lamp)

W:2210 D:520 H:610 mm

ROYERE SMALL CABINET

left (with Pagoda Lamp)

W:1000 D:450 H:810 mm

ANNA TALL CABINET

above, right

Based on our Anna Low Cabinet, this stunning full-height cabinet has two adjustable shelves in the base section and four adjustable shelves in the top section. Base also available separately. Shown in ebonised oak.

Top W:1300 D:350 H:1264 mm
Base W:1400 D:400 H:806 mm





ANNA 3-DOOR LOW CABINET

above, right

A three-door version of our Anna Low Cabinet, this long cabinet has eglomisé doors behind an Arts & Crafts inspired lattice. Comes with three drawers each on the right and left sections, and two adjustable shelves in the middle section. Available with or without handles. Shown in bleached oak, made to order only.

W:2300 D:500 H:860 mm

ANNA CABINET

above, left; below, left

This pretty cabinet has eglomisé doors behind an Arts & Crafts inspired lattice. The simple rectangular shape sits on square tapered legs. It comes with two internal shelves.

W:1540 D:540 H:852 mm

ANNA WARDROBE

left

Adapted from our Anna cabinet, this beautiful statement piece has three compartments with shelves, drawers and a centre hanging rail. Shown in bleached oak. Made to order only.

W:2441 D:710 H:2400 mm





TWISTER CABINET
opposite (with Fellini Lamps), above, left
Stunning long 4-door cabinet with a textured angular profile sitting on curved, gilded metal legs. Adjustable shelves and light veneer interior. Available in firmdale grey oak (opposite), Waxy white (above) and black lacquer (left) with convex mirror.
W:2210 D:510 H:750 mm



PORTOBELLO CABINET
above (with Almeria Lamps), detail right
A completely brass clad version of our Twister Cabinet with circular open feet also in brass. Internally the cabinet is lined in sycamore and features two adjustable shelves per section.

W:2210 D:510 H:750 mm





DANISH CABINET

above

A beautiful oak cabinet with vellum fronted doors and hooped metal feet. Available with either ebonised oak and black vellum doors (*above*) or in firmdale grey oak with plain vellum doors. Vellum is a natural skin therefore colour variation is inevitable.

W:2260 D:550 H:750 mm

CIRCLES LONG CABINET

left

A whimsical, glazed-fronted long cabinet with aged mirror and four adjustable interior shelves. Shown in ebonised oak. Made to order only.

W:2200 D:530 H:790 mm



REGENCY SINGLE WAVE CABINET

below (with Pagoda Lamp)

A single wave version of our popular Regency Wave cabinet. Three internal adjustable shelves. Part of the Colourist Collection this cabinet is finished to your specification. Select from endless colours by RAL or NCS. Shown here in NCS colour S:1080 Y90 R Gloss.

W:1100 D:560 H:840 mm





POLLOCK CABINET

above

A stunning clean lined cabinet with beautiful vellum panelled doors. A gilded metal base and grey oak fixed shelf. Three further adjustable shelves. Vellum is a natural skin therefore colour variation is inevitable.

W:1300 D:520 H:1680 mm
Internal D:485mm

REGENCY DOUBLE WAVE CABINET

left

A double length wave cabinet with two pairs of push open doors. Inside there are two adjustable shelves on each side. Available in ebonised oak or as part of the Colourist Collection, finished to your specification. Select from endless colours by RAL or NCS. Shown here in NCS colour S:5020-R40B Satin.

W:2150 D:560 H:850 mm





KLEE CABINET

above left (with Fellini Table Lamp)

A clean lined cabinet with an ebonised oak frame with beautiful brown variegated vellum or with a black lacquer surround and brass clad doors (shown). Vellum is a natural skin therefore colour variation is inevitable.

W:1500 D:530 H:800 mm

FELIX TALL MEDIA CABINET

above right

A two-piece media cabinet based on our Felix Armoire with panelled vellum on the top section and vellum drawer fronts on the bottom section and a frank metal base. Three adjustable shelves. Vellum is a natural skin therefore colour variation is inevitable.

W:1200 D:540 H:2260 mm

Top Internal W:1370 D:470 H:1230mm

Base Internal W:1520 D:550 H:990mm

POLLOCK ESPALIER CABINET

below right

A stunning clean lined cabinet with an espalier pattern on the doors. A gilded metal base and matching fixed shelf. Three further adjustable shelves. Vellum is a natural skin therefore colour variation is inevitable.

W:1300 D:520 H:1680 mm

Internal D:485mm



WILLIAM SCOTT CABINET

below

Cerused oak cabinet with circle and pear design on the doors, hand forged brass handles and adjustable shelves. W:1200 D:450 H:870 mm





LIPPS LONG CABINET
above (with Paris Lamps)

Double length cabinet with adjustable shelves in ebonised oak with unusual Cintamani *bas relief* to the doors.
W:2200 D:550 H:800 mm

GETTY CABINET
right

Completely clad in hand-finished variegated brown vellum with aged brass feature trim and solid brass vintage-style feet. Internally, the inside of the doors are also clad in vellum, the cabinet is lined in sycamore veneer and comes with two adjustable shelves and 4 sliding media outlets.
Vellum is a natural skin therefore colour variation is inevitable.
W:1500 D:500 H:740 mm





ELGIN CABINET

above (with Paris Lamps), left

Our new Elgin Cabinet features an elegant, gently curved front which is lined in sycamore and has two side cabinet sections and four centre drawers. The top and bottom trim, as well as the handles, are solid aged brass. Comes with two adjustable shelves. Clad entirely in variegated black vellum or as part of the Colourist Collection, finished to your specification. Select from endless colours by RAL or NCS. Vellum is a natural skin therefore colour variation is inevitable.

W:2000 D:600 H:800 mm





chairs

UMBRIA CHAIR

above

A pretty petite arm chair, modelled on an Italian design from the 1950s.

Extremely versatile and comfortable.

W:730 D:500 H:570 mm (Seat H:450mm)

Customer's Own Material: 5m

LIBRARY CHAIR

opposite top

A contemporary adaptation of an early 19th century original, this exceptionally comfortable design is also available as a 2- and 3-seater sofa.

W:727 D:720 H:920 (Seat H:460mm)

Customer's Own Material: 5m

POLLOCK CHAIR

opposite below left

After Philip Pollock's original of circa 1963, this wonderfully low square chair has a spring seat on an aged bronze or nickel plated frame.

W:810 D:810 H:700 (Seat H:500mm)

Customer's Own Material: 5m

MR BROWN'S CHAIR

opposite below right

A classic Victorian style spoon back armchair, deep, comfortable and low.

W:660 D:870 H:1000 (Seat H:500mm)

Customer's Own Material: 5m



GRANTA CHAIR

top left

An eccentric 1950s style Italian armchair with a wonderful spoon back and contemporary style. Legs available in ebonised oak, light oak, medium oak, mahogany or wenge finish.

W:780 D:850 H:1150 (Seat H:400mm)
Customer's Own Material: 5m

MARY'S CHAIRS

armchair top right, side below right

A gorgeous petite dining carver or side chair with curves at every turn, finished with bleached aged oak legs.

Carver W:740 D:620 H:930 (Seat H:450mm)
Side W:520 D:640 H:920 (Seat H:490mm)
Customer's Own Material: 3m (carver)
2m (single)

BUTTERFLY CHAIR

below left

An unusual butterfly winged armchair inspired by an English original circa 1860. Shown in an oak finish with tapered legs. Turned legs, cabriole legs with castors and other finishes available on request. Made to order only.

W:780 D:805 H:920 (Seat H:420mm)
Customer's Own Material: 5m





BOBBIN CHAIRS

opposite

Really pretty simple bobbin dining chairs with perfect proportions. These chairs cross the line of both traditional and contemporary style. Available in either rustic oak (shown) or bleached aged oak finish.

Carver W:600 D:470 H:890 (Seat H:460mm)

Side W:500 D:470 H:890 (Seat H:460mm)

Customer's Own Material: 1m



LUBERON CHAIR

above

A handsome antiqued pine chair in the French country style. With base and low back cushion. Rustic grey pine finish.

W:790 D:790 H:1180 (Seat H:480mm)

Customer's Own Material: 3m

DANNY CHAIR

right

A beautiful English 1920s style weathered oak reclining easy chair.

W:632 D:870 H:920 (Seat H:450mm)

Customer's Own Material: 3m



RICKY CHAIR

opposite below centre

A twist on a classic 1930s boudoir armchair. Extremely comfortable chair with a fluted, elegant frame. Available in antique silver leaf (shown) or ebonised oak finish.

W:700 D:780 H:790 (Seat H:400mm)

Customer's Own Material: 5m





BOBBIN ARMCHAIR

above left

A well proportioned clean lined low square chair, in an ebonised oak or fumed grey oak finish.

W:800 D:840 H:760 (Seat H:400mm)

Customer's Own Material: 4m

KELSO CHAIR

above right

An elegant library wingback chair with tapered legs.

W:800 D:770 H:1100 (Seat H:480mm)

Customer's Own Material: 7.5m

HAROLD CHAIR

carver below left, single below right

Arts and crafts inspired dining or occasional chair, available in ebonised or weathered grey oak.

Carver W:631 D:470 H:950 (Seat H:500mm)

Side W:500 D:470 H:950 (Seat H:500mm)

Customer's Own Material: 1m





LUCIA DINING CHAIR

above left

Based upon a traditional keyhole dining chair with contemporary double sabre oak legs. Other finishes available on request.

W:500 D:590 H:590 (Seat H:480mm)
Customer's Own Material: 2m

ZEBRA CHAIR

above centre

1950s inspired chair in rosewood or ebonised oak frame with upholstered seat.

W:620 D:680 H:940 (Seat H:480mm)
Customer's Own Material: 2.5m

LONDON CHAIR

side chair, above right

A wonderfully proportioned single dining chair with a tapered front leg and a curved swept back leg. Carver and side chairs are available in ebonised oak or mahogany finish.

Carver W:550 D:630 H:980 (Seat H:480mm)
Customer's Own Material: 3.5m
Side W:550 D:630 H:980 (Seat H:480mm)
Customer's Own Material: 2.5m

SCANDIA CHAIR

left

A beautifully designed dining chair by Hans Brattrud (Norway) in 1957 with a bent wood back on stainless steel legs. Finished in oak or walnut. This chair is made under licence from Norway. In custom colours by special order.

W:510 D:540 H:820 (Seat H:420mm)





chests
of
drawers



PIMLICO CHEST

opposite (with Almeria Table Lamp)

A stunning adaptation of an early Georgian chest with a contemporary updated finish. Available in faux ebony with silver-plated handles. Bedside also available.

W:1232 D:606 H:890 mm

BRIGHTON CHEST

above

This New York style chest is plain mirrored or black glass on every surface with bevelled edges where panels adjoin. Finished with contrasting faux ebony wooden handles and legs. Bedside also available.

W:1050 D:450 H:847 mm





BALTHAZAR CHEST

opposite, top left, below right
A wonderfully exaggerated Bow Chest with 4 long oak lined drawers, totally wrapped in a subtle polished variegated vellum in feint grey, blue or black (shown). Vellum is a natural skin therefore colour variation is inevitable.
W:1200 D:600 H:850 mm

PERCY CHEST

opposite, top right
Unique concave design chest with aged brass handles, available in weathered or ebonised oak finish.
W:1100 D:500 H:840 mm

VERSAILLES CHEST

opposite, below left, left (with Contessa Table Lamp)
After a French 19th century original this beautiful chest is available in industrial oak or as part of the Colourist Collection, finished to your specification. Select from endless colours by RAL or NCS. Shown here in NCS colour S:6030-R6013 Gloss.
W:1200 D:530 H:860 mm



FRENCH COUNTRY CHEST

above left

A classic 3-drawer chest with tapering legs finished in coloured lacquer with contrasting brass handles. This piece is part of the Colourist Collection and finished to your specification. Select from endless colours by RAL or NCS. Shown here with drawers in NCS colour S:3005 B20G, frame in NCS colour S:1005 B20G.

W:1050 D:450 H:847 mm



HOBBS CHEST

above right

Handsome interpretation of an early Italian painted chest finished in a subtle soft antiqued oak finish.

W:1220 D:600 H:830 mm

18TH CENTURY COMMODE

below right

This beautifully proportioned commode is based on an early 1720s original. It has a pull-out desktop which neatly slides back into the serpentine fronted frame. Finished in antique french green.

W:1220 D:600 H:830 mm





DELPHI CHEST

above left, detail of top below right

Long drawered Italian influenced chest with columns and central shield escutcheons, finished in a smoked oak with a black variegated vellum insert on the top. Vellum is a natural skin therefore colour variation is inevitable.

W:1370 D:610 H:875 mm

FELIX CHEST

centre left

A subtle ebonised oak stained box 3-drawer chest on simple gilded steel legs.

W:1200 D:550 H:806 mm

TEMPLE CHEST

below left

A beautiful addition to our Temple collection, with panels of lightly distressed eglomisé and wooden drawer handles to match the frame. Available in silver or gold finish.

W:1200 D:550 H:806 mm

REGENCY SHORT WAVE CHEST

above

Part of the Colourist Collection, this stunning classically inspired wave fronted chest is finished in coloured lacquer with contrasting brass handles. Select from endless colours by RAL or NCS. Shown here in NCS colour S:3060 B30G Satin.

W:1200 D:550 H:806 mm





coffee tables



CHICHESTER COFFEE TABLE

opposite

Black and gilt or antiqued silver frame with tapering legs and hand-gilded detailing. The top and base are inset verre eglomisé panels, creating a soft antique mirror finish. Sofa end and console table also available.

W:1120 D:660 H:460 mm

TEMPLE COFFEE TABLE

above

Verre eglomisé panelled tables with either gold or antiqued silver leaf frame and gilded undersides. Rectangular shown, Square version also available.

Rect W:1100 D:660 H:510 mm

Square W:1190 D:1190 H:510 mm

FRANK COFFEE TABLE

left

After Jean Michel Frank, this classic collection combines a subtle bronzed & gilded metal frame with a distressed Spanish leather top. Also available as a console table.

W:1190 D:430 H:430 mm





COPPER COFFEE TABLE

above

A pretty riveted copper coffee table with totally clad legs and top. This is a hand finished product giving a non-uniform appearance.

W:1430 D:665 H:465 mm

BEVAN COFFEE TABLE

below

This chunky carved legged table with the contrasting thin top and low proportions is finished in a textured chalky brown oak. This piece is manufactured with very thick dimensions of laminated oak so some movement or surface checking is inevitable.

W:1500 D:800 H:360 mm





JEAN MARC COFFEE TABLE

above

A stunning 1930s French inspired coffee table combining aged gilt with soft dyed parchment. The lightweight architectural frame sits on gold steel spheres which gives each piece a truly delicate feel. Desk and console also available. Vellum is a natural skin therefore colour variation is inevitable.

W:1380 D:820 H:470 mm

PABLO COFFEE TABLE

below

A witty John Dickinson coffee table from 1975. This piece is entirely covered with a textured gesso. This bold shape has a wonderfully sculptural feel.

W:1350 D:800 H:460 mm





RENE COFFEE TABLE

above

A waterfall inspired coffee table in either black vellum or chocolate faux shagreen and a distressed silver leaf underneath. Vellum is a natural skin therefore colour variation is inevitable.

W:1100 D:660 H:510 mm

ROSE COFFEE TABLE

above right

Stunning kidney shaped coffee table finished in a polished vellum with subtle variegated grey or purple colouring. Vellum is a natural skin therefore colour variation is inevitable.

W:1200 D:600 H:450 mm

LARSON COFFEE TABLE

above left

Inspired by French designer Rene Drouet circa 1940, this coffee table combines a gilded metal frame with an antique eglomisé top. Rectangular or Square versions available.

Rect W:1240 D:800 H:510 mm

Square W:1240 D:1240 H:510 mm





AVA COFFEE TABLE

left

A wonderfully elegant coffee table with a warm gilt quatrefoil frame with inset clear glass. Nest of two tables also available.

W:1100 D:600 H:510 m

SERPENTINE COFFEE TABLE

below left

An elegant antique mirrored coffee table with pretty curves. Console table also available.

W:1100 D:700 H:460 mm

FELIX COFFEE TABLE

below right

A wonderfully simple patinated solid metal frame coffee table finished in our frank metal finish, with 3 vellum panels on top. Vellum is a natural skin therefore colour variation is inevitable.

W:1200 D:500 H:410 mm



TEMPLE CONSOLES

below

Verre eglomisé panelled tables with
either gold or antiqued silver leaf frame
and gilded undersides.

Small W:800 D:300 H:840 mm

Large W:1300 D:350 H:840 mm



console
tables



JEAN MARC CONSOLE TABLE

above

A stunning 1930s French inspired console combining aged gilt with soft dyed parchment. The lightweight architectural frame sits on gold steel spheres which gives each piece a truly delicate feel. Desk and coffee table also available. Vellum is a natural skin therefore colour variation is inevitable.

W:1350 D:350 H:850 mm



CORTES CONSOLE TABLE

above

A beautifully stylish 1950s Danish style console. The top is wrapped in variegated brown vellum with gilded steel legs. There are 4 sycamore lined drawers. Vellum is a natural skin therefore colour variation is inevitable.

W:1500 D:410 H:830 mm



TRIANGLE CONSOLE TABLE

above (with Paris Lamps)

A strong clean lined console table with an Arts & Crafts feel. Available in ebonised oak or with black variegated vellum top and contrasting dark grey oak base. Vellum is a natural skin therefore colour variation is inevitable.

W:1800 D:450 H:860 mm

SERPENTINE CONSOLE TABLE

left

An elegant antique mirrored console table with pretty curves. Coffee table also available.

W:1300 D:600 H:850 mm





MELLS CONSOLE TABLE

above

An ebonised Biedermeier style sofa table with drop down ends. The table has a single drawer which sits over pretty curved legs.

W:1450 D:550 H:750 mm

CURVY CONSOLE TABLE

right

Elegant sculpted console table in antique oak finish.

W:1230 D:350 H:800 mm





**PABLO CONSOLE**

left (with Rope Mirror)

A witty John Dickinson table from 1975.

This piece is entirely covered with a textured gesso. This bold shape has a wonderfully sculptural feel.

W:1400 D:500 H:820 mm

DANNY TABLE

opposite, top left

Demi-lune table finished in dark cerused oak.

W:1540 D:760 H:760 mm

ALBANY TABLE

opposite, top right (with Paris Lamp)

An interesting take on an early 19th century Biedermeier hall table with one central drawer.

W:1400 D:580 H:840 mm

CHICHESTER CONSOLE

opposite, below left (with Capri Lamp)

A large ebonised frame with top and base in eglomisé mirrored panels. Side and console table also available.

W:1800 D:550 H:900 mm

FRANK CONSOLE

opposite, below right

After Jean Michel Frank, this classic collection combines a subtle bronzed and gilded metal frame with a distressed Spanish leather top. Also available as a coffee table.

Standard W:900 D:350 H:840 mm

Large W:1310 D:370 H:840 mm

desks & dressing tables



JEAN MARC DESK

above

A stunning 1930s French inspired desk combines aged gilt with soft dyed parchment. The lightweight architectural frame sits on gold steel spheres which give the piece a truly delicate feel. Vellum is a natural skin therefore colour variation is inevitable.

W:1600 D:800 H:786 mm

CORTES DESK

below

A beautifully stylish large desk inspired by a Danish design from the late 1950s. The top is wrapped in black vellum and the steel legs have been gilded. There are 4 sycamore lined drawers. Vellum is a natural skin therefore colour variation is inevitable.

Standard W:1500 D:700 H:740 mm

Large W:1820 D:900 H:740 mm



FELIX DESK / CONSOLE

below

A subtle ebonised oak stained 3-drawer
desk on simple gilded steel legs.

W:1000 D:550 H:756 mm
(Floor to below drawers H:585mm)





PERCY DRESSING TABLE

above

Part of the Percy collection, this dressing table has a unique concave design with brass handles. Available in either weathered grey oak or ebonised oak. Matching mirror and concave stool with an upholstered seat also available.

W:1200 D:600 H:760 mm

RUSSIAN TABLE

left

Inspired by the original Russian birchwood design of circa 1820, the distinctive curved legs and single drawer to the front make it a convenient desk, dressing table or hall table. Bernt finish shown.

W:1170 D:620 H:740 mm



JANE CHURCHILL CURVED DESK

*below, opposite below right
(with Bacco Floor Lamp)*

After a 1940s oak desk, this extremely pretty piece has a curved front and back. Finished in either black variegated vellum with brass handles or black limed oak with chrome handles. Vellum is a natural skin therefore colour variation is inevitable.

W:1520 D:600 H:770 mm





JANE CHURCHILL BANANA DESK

left, below right

This stunning leather topped desk is a unique statement piece. It has 4 drawers, a curved cupboard at one end, 2 open bookshelves on the other side. The desk is finished in a smoked grey oak with the following choice of tops: red leather, black leather, variegated black vellum or smoked grey oak. Vellum is a natural skin therefore colour variation is inevitable.

W:1470 D:770 H:770 mm





BRIGHTON DRESSING TABLE

above, left

A contemporary dressing table, inspired by an East Coast original with mirrored surfaces, ebonised legs and handles and oak-lined drawers. Collection includes matching mirror and stool, 2- and 3-drawer chests and bedside.

Table W:1230 D:605 H:755 mm

Mirror W:820 D:126 H:600 mm

Stool W:460 D:460 H:460 mm

Customer's Own Material: 1m

TEMPLE DRESSING TABLE

above, right

A 3-drawer dressing table or desk with eglomisé panels on all surfaces, including the underside. In either gold or antiqued silver leaf finish. Matching mirror also available.

Table W:1300 D:610 H:760 mm

Mirror W:830 D:139 H:600 mm

Stool W:610 D:483 H:475 mm

Customer's Own Material: 1m



HASLEV DESK

right

A wonderfully clean-lined desk combining 1950s Danish proportions with vellum drawer fronts. Finished in santos rosewood with 3 drawers in vellum. Vellum is a natural skin therefore colour variation is inevitable.

W:1510 D:750 H:760 mm

ALBERT DESK

below right

A simple oak desk with 3 drawers in vellum and tapered legs. Vellum is a natural skin therefore colour variation is inevitable.

W:1200 D:660 H:760 mm





GOLLUT DRESSING TABLE

above, left

A contemporary dressing or bedside table with 2-drawers, inspired from an East Coast original. Mirrored surfaces are combined with ebonised legs and handles, with drawers lined in oak.

W:850 D:465 H:780 mm

SILVY'S DRESSING TABLE

below, left

After a 1930s French original, this very feminine vellum dressing table with fold-out mirror has wonderful proportions. Covered in a very pretty polished vellum with faint blue or grey detail. Vellum is a natural skin therefore colour variation is inevitable.

W:1000 D:470 H:720 mm

EGLOMISÉ DRESSING TABLE

above, right

This pretty clean-lined dressing table has a verre eglomisé antiqued mirror top and oak lined drawers. Matching mirror and stool also available. Part of the Colourist Collection, the frame is finished to your specification. Select from endless colours by RAL or NCS. Shown here in NCS colour S:5540 – B Satin.

Table W:1220 D:600 H:750 mm

Mirror W:800 D:19 H:600 mm

Stool W:580 D:480 H:425 mm

Customer's Own Material: 1m

DRUM TABLE

below (with Zebra Chairs)

A thick oak round top sits on a brass or nickel plated cylindrical base with an aged, beaten finish. Tops and bases sold separately and made to order.

Select from endless colours by RAL, or NCS for the top. Shown here to match Papers & Paint Quail Sc549.

Drum Base Diameter: 690 H: 700 mm

Drum Top Diameter: 1500 H: 50 mm

dining
tables

VIGGO DINING TABLE

below

A very versatile dining table with dramatically tapered legs. Made to order to your own specification. Dimensions refer to item shown only, in firmdale grey oak.

D:1520 W:1750 H:740 mm





DAKOTA BREAKFAST TABLE

below

A Saarinen inspired table with beautiful lines, available in ebonised oak, firmdale grey oak or santos rosewood as standard.

W:1200 D:1200 H:760 mm

DAKOTA OVAL OR CIRCULAR DINING TABLE

above, right

A Saarinen inspired table with beautiful lines. Available in ebonised oak, firmdale grey oak or santos rosewood as standard. Bespoke sizes and finishes available on request. Available as an oval or circular version.

Oval Standard W:2440 D:1220 H:760 mm

Oval Large W:3050 D:1525 H:760 mm

Circ Standard W:1500 D:1500 H:760 mm

Circ Large W:1830 D:1830 H:760 mm





**BESPOKE DAKOTA DINING TABLES,
LACQUER FINISH**

above, left

A new addition – the Dakota dining table in lacquer – the Dakota dining table in lacquer to be paired with our Dakota bases. Any size or shape table top finished in any colour with a choice of our three standard bases (polished nickel, antique or aged brass). Made to order and quoted individually, leadtime of approx 5 weeks. Select from endless colours by RAL or NCS. Shown above in RAL colour 4002, left in RAL 9010.

DAKOTA DINING TABLE BASES

below

These bases for round and oval Dakota tables are hollow but can be filled to increase stability. The top of the base is unfinished allowing the table top to be attached with screws. Available in polished nickel, antique or brass finish.

Small Base Diameter:510 H:720 mm

Standard Base Diameter:630 H:710 mm

Large Base Diameter:900 H:710 mm



**MISTY TABLE BASE WITH
RUSTIC TABLE TOP**

below

A wonderful rustic oak table with a stunning double ball base and aged brass detail. Base sold separately. This piece is manufactured with very thick dimensions of laminated oak so some movement or surface checking is inevitable.

Misty Base Diameter:600 H:700 mm

Rustic Top Standard Diameter:1500 H:50 mm

Rustic Top Large Diameter:1800 H:50 mm





KENT TABLE BASE WITH RUSTIC TABLE TOP

above
A wonderful bulbous oversized base in rustic oak finish to be paired with our Rustic table tops. Base sold separately. This piece is manufactured with very thick dimensions of laminated oak so some movement or surface checking is inevitable.

Kent Base Diameter:600 H:700 mm
Rustic Top Standard Diameter:1500 H:50 mm
Rustic Top Large Diameter:1800 H:50 mm

KENT & MISTY TABLE BASES

far left (Kent), near left (Misty)
Bases sold separately. These pieces are manufactured with very thick dimensions of laminated oak so some movement or surface checking is inevitable.

Kent Base Diameter:600 H:700 mm
Misty Base Diameter:600 H:700 mm

BEVAN DINING TABLE

below (with Bobbin Chairs)

This chunky carved legged table has a contrasting thin top and finished in chalky aged brown. This piece is manufactured with very thick dimensions of laminated oak so some movement or surface checking is inevitable.

W:2000 D:1100 H:770 mm





TRIANGLE DINING TABLE
above (with Zebra Chairs)
A strong, clean-lined oak dining table with an Arts & Crafts feel. Available in a dark smoked oak.
D: 1500 W: 1500 H: 760 mm

Lighting

ALFIES LAMP

right

A stunning weighted lamp in solid brass, shown here in green finish. Can be equally used as a wall light, bedside light or sofa end lamp. Integral shade. Also available in cream finish.

W:480 D:480 Max H:800 mm

CONTESSA LAMP

opposite 1, gold; 3, amber

As the name suggests, this gold or vintage amber lamp is bold and beautiful. Includes standard cream linen shade.

Diameter:300 H:500 mm

CAPRI LAMP

opposite 2

This beautiful tapered glass lamp is hand marbled using gold and silver leaf. Each one is hand made by artisans and is unique. Includes standard cream linen shade.

Diameter:250 H:684 mm

ESCALANTE LAMP

opposite 4, blue; 6 silver

A unique 1960s inspired glass table lamp with a gentle aged silver patina on a perspex base. Each lamp is unique, made by hand and will vary in colour. Includes standard cream linen shade.

Diameter:230 H:400 mm

PAGODA LAMP

opposite 5

An inspirationally shaped table lamp with a vintaged gold patina on a perspex base. Each lamp is unique, made by hand by artisans and will vary in colour. Includes standard cream linen shade.

Diameter:230 H:400 mm

FELLINI LAMP

opposite 7, vintage green; 9, gold

A pretty textured lamp in distressed gold or subtle vintage green finish. Includes standard cream linen shade.

Diameter:230 H:460 mm

POSITANO LAMP

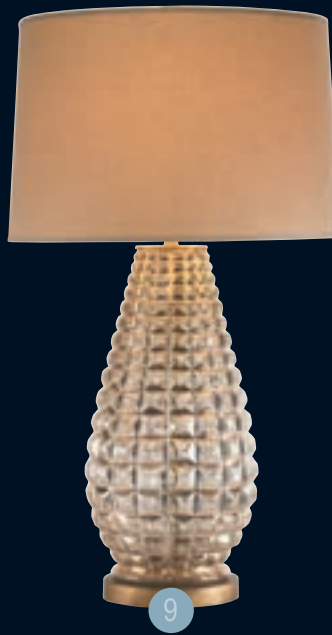
opposite 8

A glass textured lamp with hand applied soft blue and silver details, inspired by the colour and beauty of the Italian resort. With an aged nickel top and perspex base. Includes standard cream linen shade.

Diameter:190 H:480 mm

Unless indicated, all dimensions exclude lampshade.





BASTIDE FLOOR LAMP

below

A striking adaption of a late 1950s floor lamp. Gentle atmospheric light is achieved through the three perforated lamp heads that are positioned for a dramatic but practical effect. All pieces are made by hand for an individual vintage appearance. Iron and brass with an aged gilded finish.

Small Diameter:430 H:1180 mm

Medium Diameter:430 H:1420 mm

Large Diameter:430 H:1680 mm

FLIP LAMP

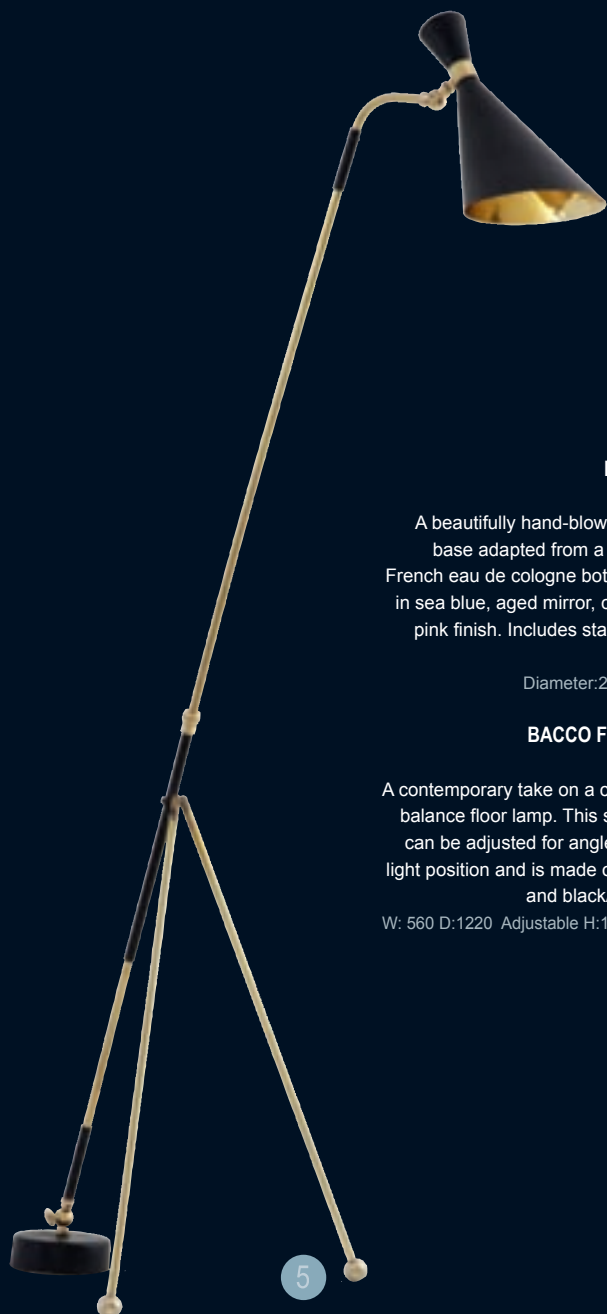
right

Aged brass flip lamp available in either a floor or table version. The fitting/shade can be turned on the table version. Table lamp also available in shiny nickel finish. Integral shade.

Small W:320 D:320 H:320 mm

Large W:910 D:910 H:1680 mm





PARIS LAMP
1-4 above

A beautifully hand-blown glass lamp base adapted from a 19th century French eau de cologne bottle. Available in sea blue, aged mirror, clear glass or pink finish. Includes standard cream linen shade.

Diameter:245 H:669 mm

BACCO FLOOR LAMP
left 5

A contemporary take on a classic 1950s balance floor lamp. This striking piece can be adjusted for angle, height and light position and is made of solid brass and black/brown steel.

W: 560 D:1220 Adjustable H:1730-1820 mm



ALMERIA FLOOR LAMP
6 left

A very individual and inspired floor lamp. Gentle rippled white gesso, based on a French original. Shade not included.

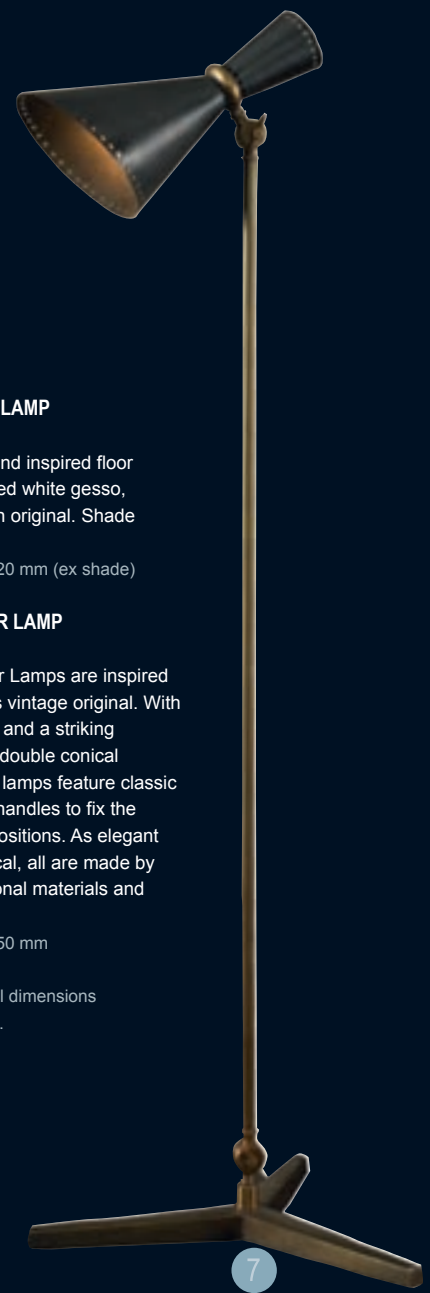
Diameter:410 H:1820 mm (ex shade)

ORISTANO FLOOR LAMP
7 right

Our Oristano Floor Lamps are inspired by a classic 1950s vintage original. With solid brass details and a striking black/brown steel double conical lampshade, these lamps feature classic teeth clamp style handles to fix the lamp in different positions. As elegant as they are practical, all are made by hand using traditional materials and methods.

Diameter:540 H:1650 mm

Unless indicated, all dimensions exclude lampshade.

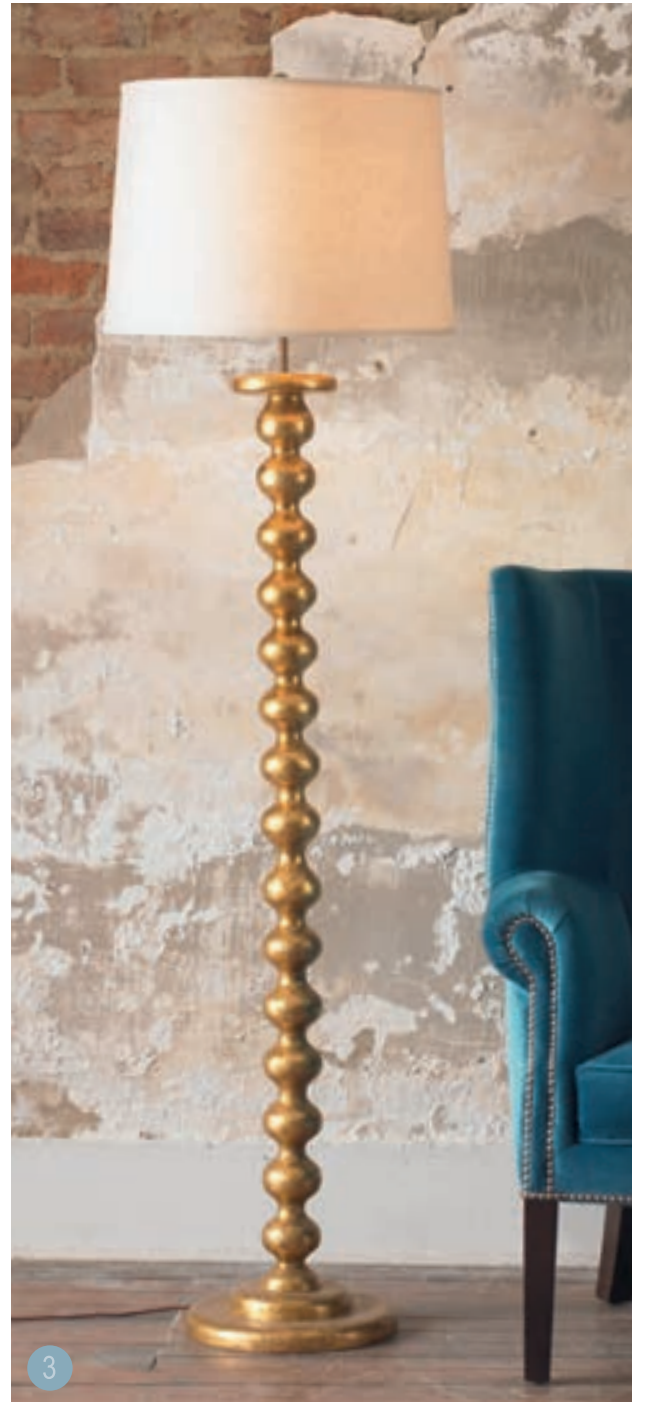




1



2



3



4



5



6



7



8



9



11



12



10

CLAUDETTE FLOOR LAMP

opposite 1

Classically proportioned gilded steel design adapted from a 1940s French original. Shade not included.

Diameter:390 H:1820 mm

PABLO FLOOR UPLIGHTER

opposite 2

A sleek well proportioned uplighter with a sculptured hand worked gesso finish.

Diameter:400 H:1800 mm

BOBBLE FLOOR LAMP

opposite 3

A tall elegant standard lamp finished in pale gold, antique silver, bright silver or bleached oak. Shade not included.

Diameter:310 H:1400 mm

PARKER LAMP

opposite 4

Clear etched glass gourd style lamp on a lucite base. Includes standard cream linen shade.

Diameter:250 H:400 mm

ALMERIA TABLE LAMP

opposite 5

A Jean Michel Frank inspired gesso clad table lamp that is elegant and well-proportioned. Shade not included.

W: 410 D:410 H:1820 mm

GALAXY CHANDELIER

above 6

A modern update of a classical French orbital lantern with three circular bands with inset details, four candles, a 6ft chain and matching ceiling rose all in aged gold. Antiqued brass with antiqued mirror, each piece is finished by hand and every piece is unique.

Diameter:600 H:600 mm

SIENNA CHANDELIER

above 7

Inspired by an 18th century Italian carved spindle 6-arm chandelier. Comes with chain, ceiling rose not included.

Diameter:1070 H:1070 mm

PORT MERION CHANDELIER

above 8

Drum chandelier made up of individual lengths of gold pipe, with a 4-way bulb fitting.

Diameter:510 H:300 mm

MOULIN WALL LIGHT

above 9

An articulated swing-arm lamp inspired by an original mid-century wall fixture with brass and gunmetal details.

Lamp Head Diameter:270 H:360 mm

SOHO LAMP

above 10

A faithful copy of a mid 20th century French arm wall lamp in solid brass. Integral shade.

Small Diameter:350 L:870 mm

Large Diameter:450 L:1420 mm

PARIS LANTERN

above 11

Based on a classic Old World mirror, this elegant lantern has a bone frame with four candles, a 6ft chain and ceiling rose in aged gold.

W:420 D:420 H:600 mm

ANNA LANTERN

above 12

Adapted from our popular Anna Series, a patinated steel frame fretwork chandelier with glass panels and pendant light fitting. Available in antique gold or silver finish.

W:520 D:520 H:520 mm

Unless indicated, all dimensions exclude lampshade.

mirrors

PALAZZO MIRROR

right

A beautifully large scaled Venetian style mirror with an aged eglomisé frame around an antique mirror plate.

Small Square W:1500 D:48 H:1500 mm

Large Square W:2000 D:48 H:2000 mm

Rectangular W:1000 D:48 H:2000 mm

ANNA MIRROR

opposite top left

Beautiful adaptation of our Anna Screen with a bleached oak fretwork frame, with either a bevelled eglomisé or plain mirror centre.

Standard W:910 D:25 H:1360 mm

Large W:910 D:25 H:1810 mm

ECOUTER MIRROR

opposite top right

This wonderful convex mirror has a carved rounded frame which is beautifully covered in a marbled black vellum. The glass is a slightly antiqued eglomisé. Vellum is a natural skin therefore colour variation is inevitable.

Diameter:1000 D:80 mm

RHAPSODY MIRROR

opposite below left

A simple circular aged mirror frame with convex eglomisé centre.

Diameter:460 D:30 mm

TEMPLE RECTANGULAR MIRROR

opposite below right

Clean-lined mirrors collection with verre eglomisé surrounding a raised central mirror. Available in gold (shown) or antiqued silver leaf finish. Also available as a Square version.

Rect W:1000 D:70 H:1250 mm







BRIGHTON MIRROR

above left

A large scale verre eglomisé mirror with wooden frame. Standard size in antique silver finish, or large size in gold finish.

Standard W:2200 D:530 H:790 mm

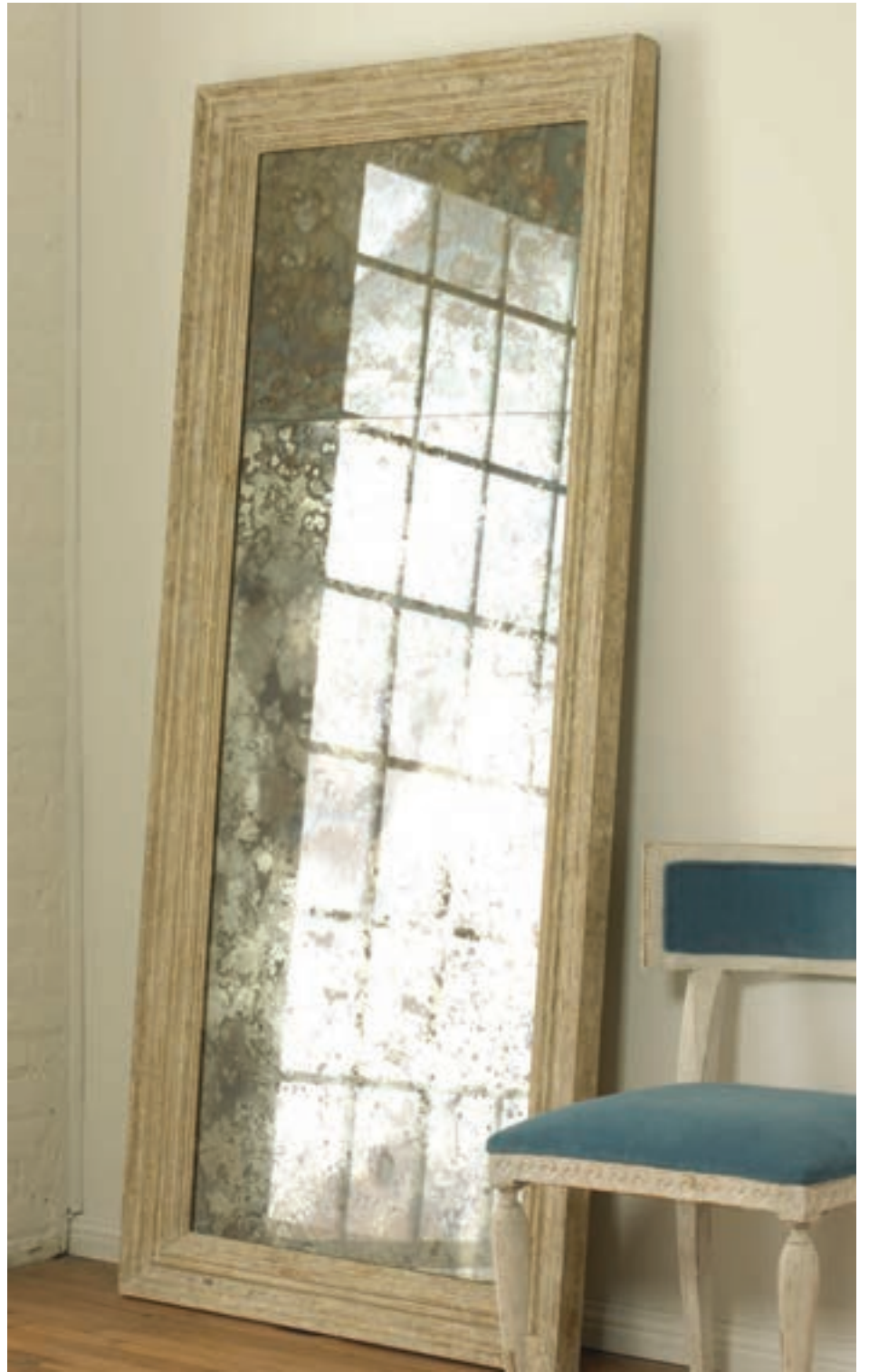
Large W:2200 D:530 H:790 mm

FLORENTINE MIRROR

above right

An oversized floor mirror with a simple, heavily distressed frame. The centre of the mirror is made up of multiple mirror panels.

W:1020 D:64 H:2210 mm



ROPE MIRROR

below far right

A wonderful eglomisé convex mirror with a heavily antiqued painted frame.

Diameter:1000 D:80 mm

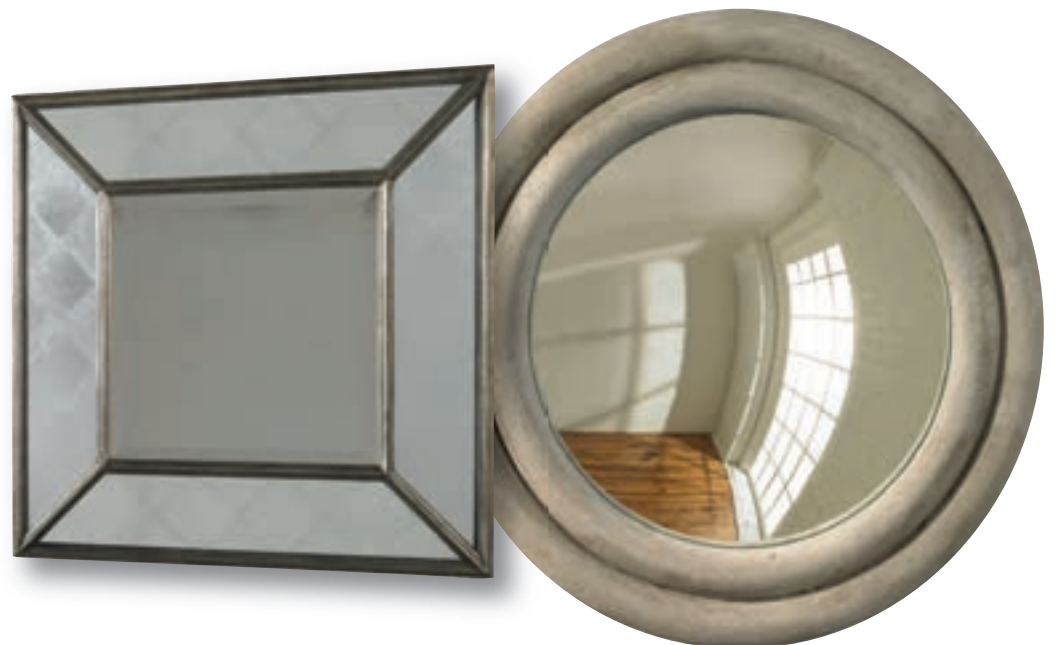
TEMPLE SQUARE MIRROR

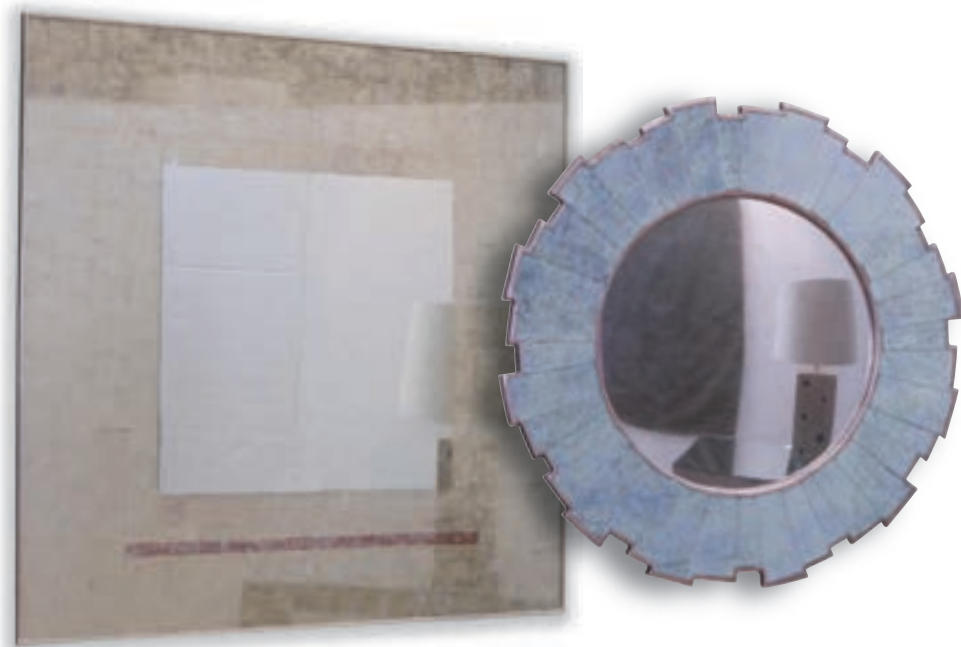
below near right

Clean-lined mirrors collection with verre eglomisé surrounding a raised central mirror. Available in gold or antiqued silver leaf finishes. Small square shown.

Small Sq W:750 D:70 H:750 mm

Large Sq W:1250 D:70 H:1250 mm





RANDOM MIRROR

above left

A quirky almost sculptural rectangular mirror with contrasting eglomisé and aged mirror.

Small W:700 D:33 H:1000 mm

Large W:800 D:26 H:1600 mm

GARCIA SQUARE MIRROR

below far left

A huge contemporary mirror with a subtly patinated outer border and a clear eglomisé centre. Custom sizes available to order.

W:1500 D:1500 H:30 mm

BADEN MIRROR

above right

Based on an original Black Forest mirror, this hand produced gentle white gesso frame, with a practical bevelled mirror centre, has intertwined botanical and bird details, making it work well in both classic and modern interiors.

W:920 D:65 H:1320 mm

GARCIA ROUND MIRROR

below near left

A contemporary eglomisé sunburst mirror with a convex centre. The rays have a slight verdigris patination, edged with copper. Custom sizes available to order.

Diameter:1000 D:30 mm

HOBBS MIRROR

opposite top left
An exceptional sunburst mirror – each ray is individually carved and finished in a natural, gilt or antique silver finish. The central convex mirror is aged.
Standard Diameter:1000 H:50 mm
Large Diameter:1450 H:50 mm

CONVEX MIRROR

opposite top right (with Paris Lamp)
An interesting twist on a 19th century design. Finished in either a painted off white or a dark fumed grey oak with a convex eglomisé mirror centre.
Diameter:1000 D:120 mm

HENNESSEY MIRROR

opposite below left
An architectural brass framed mirror with symmetrical ends, influenced by Jacques Adnet.
W:750 D:40 H:1210 mm

JANE CHURCHILL EBURY MIRROR

opposite below right
Designed by Jane Churchill and based on an 1800 original, this stunning gothic inspired mirror has either an antiqued or plain mirror centre. Frame finished in either fools gold or bleached oak.
Small Diameter:900 D:54 mm
Large Diameter:1200 D:54 mm

SUPERNOVA MIRROR

right
A stunning sunburst gold mirror frame with eglomisé centre.
Diameter:1460 D:30 mm

GUITAR BUBBLE MIRROR

below
A pretty, curvy feminine mirror with a simple antiqued mirror frame decorated with hand etched bubbles.
W:850 D:25 H:1200 mm







QUEEN ANNE MIRROR

above left
 A stunning water gilded eglomisé Queen Anne mirror available in traditional pink, blue, red, black or silver, with plain or aged antique mirror centre.
 W:700 D:31 H:1610 mm



LEAF BONE MIRROR

above right
 An unusual symmetrical shaped leaf mirror with an antiqued horn frame.
 Standard W:528 D:30 H:1219 mm

QUEEN ANNE ROUND MIRROR

below far right
 A stunning water gilded eglomisé Queen Anne round mirror available in silver with aged antique or plain mirrored centre.
 Diameter:990 D:320 mm

LARA MIRROR

below right
 A stunning mid-century inspired starburst mirror with a convex centre, aged bone rays and an aged gold frame.
 Diameter:600 D:20 mm
 Mirror Inset Diameter:300mm





PARIS MIRROR

above left

A delicate Queen Anne style mirror with an antiqued horn frame and a split plain mirror centre.

W:800 D:30 H:1250 mm

MADRID BONE MIRROR

below left

A simple gothic quatrefoil mirror with a delicate bone a plain mirror centre.

W:1100 D:30 H:1100 mm

FERDINAND MIRROR

above right

A classic shape with an updated feel. The tonal beauty of the faux shagreen frame, available in either espresso or storm, contrasts with a modern mirror centre. It works well in traditional and more contemporary inspired settings. Each piece is finished by hand by artisans and is unique.

W:711 D:26 H:1067 mm

occasional tables





1



2



3



4



5



6

FELIX ROUND TABLE

left

A wonderfully simple patinated solid metal frame side table finished in our frank metal finish. Available with either English vellum, variegated black vellum or aged mirror insert (shown). Vellum is a natural skin therefore colour variation is inevitable.

Diameter:600 H:660 mm

DAKOTA BABY SIDE TABLE

1 above

A small, unbelievably useful, aluminium side table with a slim oak top. Available in waxy white oak or ebonised oak.

Diameter:450 H:510 mm

FELIX NEST OF TABLES

2 above

A wonderfully simple patinated, solid metal frame set of nesting tables finished in our frank metal finish, with vellum tops. Vellum is a natural skin therefore colour variation is inevitable.

W:510 D:460 H:560 mm

WOLFE STOOL

3 above

A feminine small table carved from torched oak.

Diameter:320 H:600 mm

MR LOT TABLE

4 above

A contemporary moulded stool/side table available in fools gold or off white.

Diameter:350 H:450 mm

WINE GLASS TABLE

5 above

Carved and sculpted solid oak side table with a distinctive bulbous base. Available in brushed ebonised or bleached oak. This piece is manufactured with very thick dimensions of laminated oak so some movement or surface checking is inevitable.

Diameter:600 H:700 mm

PONTI TABLE

6 above

This octagonal occasional table is a contemporary interpretation of a classic Syrian design. Finished in a pretty silver shagreen with contrasting brass detail.

W:530 D:530 H:610 mm

CRILLION SIDE TABLE

right

A wonderfully balanced, Biedermeier style round side table in figured sycamore or dark mahogany with brass detailing (shown).

Diameter:550 H:660 mm

LORENZO SIDE TABLE

opposite, top left

An inspired and adapted mid-century one drawer side table / nightstand. Clad in faux shagreen with aged brass legs, drawer handles and inset detail.

W:540 D:510 H:640 mm

PICASSO SIDE TABLE

opposite, top right

Intricate, sculptured, 'double row' frame with a simple top – an unusual side table just like the man whose name it takes. Gesso and clear glass with eglomisé detail or an inset glass top.

Diameter:600 H:660 mm

AVA NEST OF TABLES

opposite below left

A lovely set of two nesting tables with a warm aged gold quatrefoil frame and clear glass insert.

Small W:430 D:430 H:430 mm

Large W:500 D:500 H:500 mm

BARRINGTON SIDE TABLE

opposite below right

An elegantly profiled side table with tapered sharp lines, aged brass accents and finished in a textured faux shagreen skin. Each piece is made by hand and is unique.

W:540 D:540 H:660 mm









LARSON SQUARE SIDE TABLE

left

Inspired by French designer, Rene Drouet, circa 1940, this collection combines a gilded metal frame with an antiqued eglomisé top. Round version also available.

W:600 D:600 H:660 mm

PABLO SIDE TABLE

opposite, top left

A witty John Dickinson table from 1975. This piece is entirely covered with a textured gesso. The bold shape has a wonderfully sculptural feel.

W:730 D:500 H:570 mm

TWIG TABLE

opposite, top right

A quirky side table available with either a weathered or ebonised oak top and organic freeform bronze legs.

Diameter:700 H:680 mm

BERTRAND SIDE TABLE

opposite below left

An elegant side table with tapered legs and an aged mirror top.

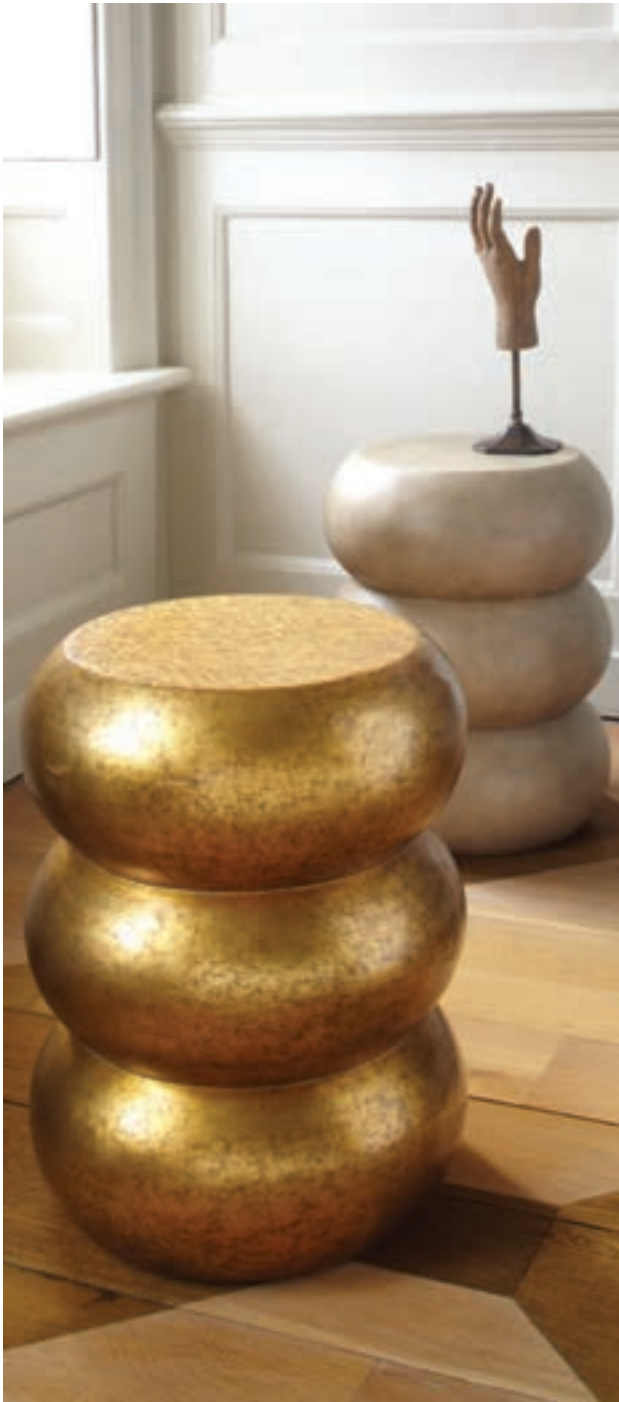
W:610 D:5610 H:670 mm

X-TABLE

opposite below right

Simple table with elegant gilded X-frame legs. Available in either ebonised or weathered grey oak finish.

Diameter:600 H:585 mm



MRS LOT TABLE

above left
A contemporary moulded stool/side table available in foos gold or off white.
Diameter:350 H:450 mm

CHICHESTER SOFA END TABLE

above centre (with Pagoda Lamp)
Aged silver or ebonised frame with tapering legs and hand-gilded detailing. The top and base are inset verre eglomisé panels, creating a soft antique mirror finish.
W:610 D:510 H:660 mm

TRIBECA 3-TIER END TABLE

above right (with Almeria Table Lamp)
Deco inspired round table range with three curved legs which sit flush with both the top and base. Available in faux ebony with contrasting polished nickel inserts or in a beautiful bleached aged oak.
Large Diameter:500 H:660 mm
Small Diameter:350 H:660 mm



ROSE SIDE TABLE

opposite top left
A simple rounded side table finished in a polished vellum with subtle variegated brown or purple colouring. Vellum is a natural skin therefore colour variation is inevitable.
Diameter:600 H:450 mm

BABY BREAKFAST TABLE

opposite top right
Side table version of the popular breakfast table, the base is adapted from a Regency torchere. Available in antiqued silver leaf with a plain eglomisé top.
Diameter:600 H:650 mm

BREAKFAST TABLE

opposite below left
This Regency style table is finished with antiqued silver leaf and a pretty verre eglomisé top.
Diameter:1000 H:760 mm

JACOBS TABLE

opposite below right
A wonderfully simple vellum topped table made from a patinated, gilded solid metal frame. Vellum is a natural skin therefore colour variation is inevitable.
Diameter:550 H:520 mm

ALPINE LOG SIDE TABLE

right
Hand cast in white gesso or aged gold, this side table has a unique one-of-a-kind appearance. As gesso is hand applied and finished by artisans each unique piece will vary.
Diameter:350 H:450 mm







TEMPLE NEST OF TABLES

above

Verre eglomisé panelled tables with either gold or antiqued silver leaf frame. The undersides are gilded.

W:600 D:500 H:550 mm

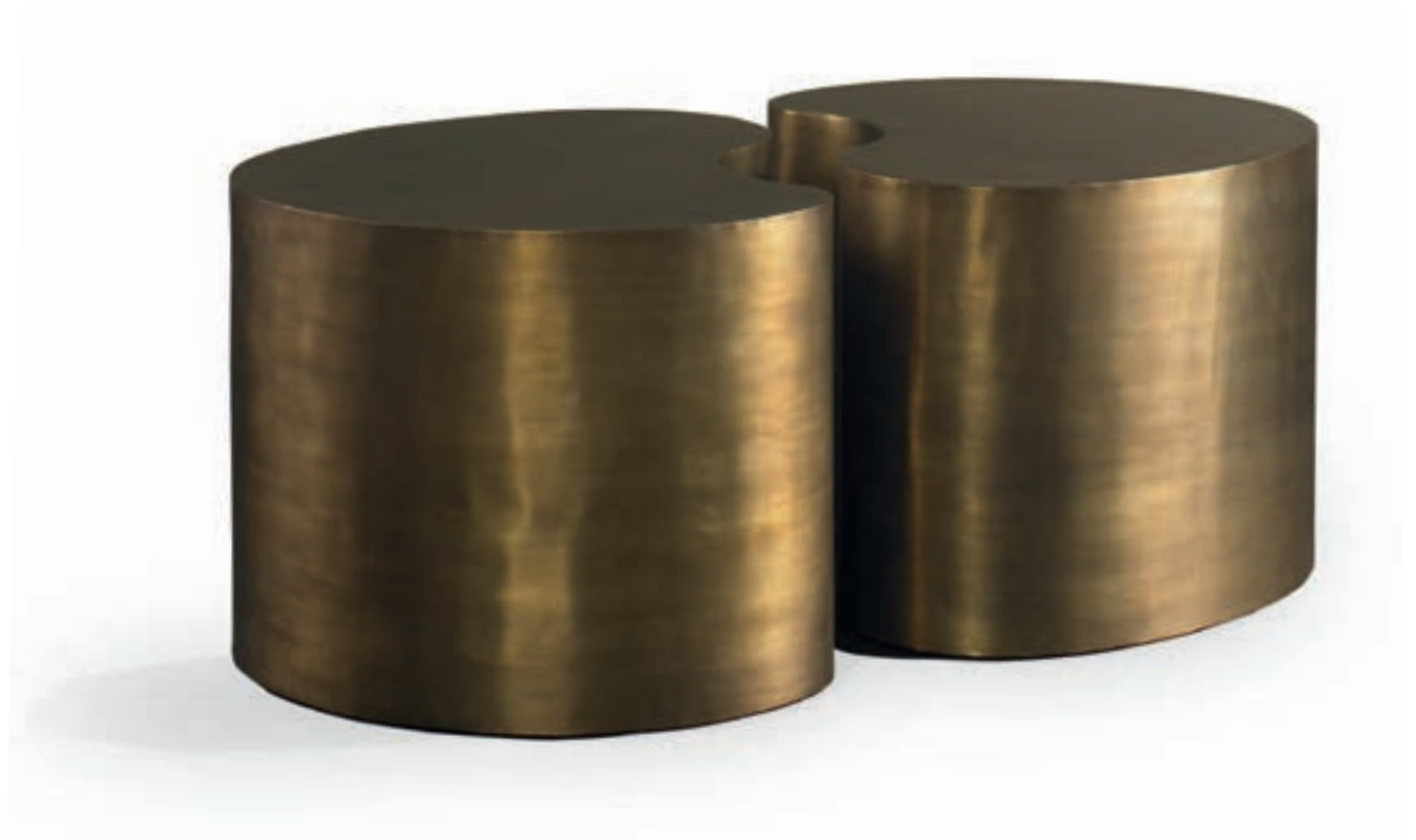
FIGARO TABLE

right

A pair of brass clad freeform occasional tables which can be used individually or together as a coffee table.

Overall W:1120

Each W:690 D:610 H:460 mm





DUCK BILLED TABLE

left

A laminated solid oak sculpted side table. The smooth rounded bulbous forms are finished in either waxy white or brushed ebonised oak. This piece is manufactured with very thick dimensions of laminated oak so some movement or surface checking is inevitable.

W:400 D:300 H:600 mm





TEMPLE SOFA END TABLE
opposite (with Pagoda Lamp)
Verre eglomisé panelled table with
either gold or antiqued silver leaf frame.
The undersides are gilded.
W:600 D:600 H:600 mm

LIDO SIDE TABLE
left (with Pagoda Lamp)
Our Lido Side Table is a simple hour-
glass shape covered in our grey faux
shagreen. Each piece is made by hand
and is unique.
Diameter:510 H:640 mm

SALAMANCA SIDE TABLE

below

A bold and contoured extended drum style table clad in faux shagreen. Each piece is hand made by artisans and is unique.

Diameter:483 H:610 mm

TRIBECA 2-TIER SOFA END TABLE

opposite top left

Deco inspired round table range with three curved legs which sit flush with both the top and base. Available in faux ebony with contrasting polished nickel inserts or in a beautiful bleached aged oak.

Diameter:600 H:450 mm

RICHARDS STOOL

opposite top right

A carved, almost tribal, stool / table made from torched oak.

Diameter:330 H:460 mm

TRIBECA 3-TIER END TABLE

opposite below left

Deco inspired round table range with three curved legs which sit flush with both the top and base. Available in faux ebony with contrasting polished nickel inserts or in a beautiful bleached aged oak.

Small Diameter:350 H:660 mm

Large Diameter:500 H:660 mm

KASPAR SIDE TABLE

opposite below right

A small quirky gesso Arkana-inspired side table.

Diameter:450 H:580 mm







screens



ANNA SCREEN

below left

Beautiful three-panel oak lattice screen in bleached oak. Magnificently tall 4-panel (2.8m high) also available.

3 panel, each W:740 D:40 H:2135 mm

4 panel, each W:740 D:40 H:2800 mm

RENE SCREEN

below right

Stunning 3 panel, double-sided screen with chocolate faux shagreen on one side and ivory faux shagreen on the reverse, with an aged brass frame.

3 panel, each W:740 D:40 H:2135 mm

ROSE SCREEN

opposite

This random shaped 4-panelled screen with curved irregular tops has a strong 1920s feel. Each panel is finished with subtle variegated grey polished vellum. Vellum is a natural skin therefore colour variation is inevitable.

4 panel, each W:500 D:40 H:1820 mm

Rene & Anna screens made to order only.



COMO SOFA

below

A timeless and faithful reproduction of a late 19th century Italian sofa in a simple antique painted finish.

W:1780 D:670 H:870 mm (Seat H:420 mm)

Customer's Own Material: 6m

LIBRARY SOFA

2-seater opposite above, 3-seater below

A contemporary adaptation of an early 19th century original, this extremely comfortable design is available in either antiqued silver leaf or mahogany finish. Chair also available.

2-Seater W:1230 D:720 H:915 mm

(Seat H:510 mm)

Customer's Own Material: 6m

3-Seater W:1800 D:720 H:915 mm

(Seat H:510 mm)

Customer's Own Material: 9m

sofas







BUTTERFLY LOVE SEAT

opposite top

An unusual butterfly winged 2-seater sofa inspired by an English original circa 1860 with legs in an antique mahogany finish. Available with turned legs with castors or tapered legs without castors. Also available as an armchair. Custom sizes & finishes available to order.

W:1355 D:480 H:920 mm (Seat H370 mm)
Customer's Own Material: 6m

GRANTA LOVE SEAT

opposite below left

Adapted from our Granta Armchair, this eccentric 1950s style love seat has a wonderful spoon back, exaggerated curves and period style legs and arms. Legs available in ebonised oak, light oak, medium oak, mahogany or wenge finish.

W:1320 D:790 H:1140 mm (Seat H510 mm)
Customer's Own Material: 8m

KELSO LOVE SEAT

opposite below right

Adapted from our Kelso Armchair, this elegant library wingback loveseat has tapered legs available in ebonised oak, light oak, medium oak, mahogany or wenge finish.

W:1450 D:760 H:1120 mm (Seat H510 mm)
Customer's Own Material: 11m

REGENCY SOFA

above

This beautiful sofa has been adapted from a French original circa 1820. The sofa comes with two bolster pillows. Available in aged silver or pale gold finish.

W:2220 D:875 H:820 mm (Seat H500 mm)
Customer's Own Material: 12m

hotels contract



hotels & contract



Opposite & above; Red Carnation Hotel Group Design Team www.uniworldrivercruises.co.uk

Julian Chichester has been involved in many high profile hotel projects around the world, working closely with interior designers and specifiers.

By working directly with designers we are able to create new bespoke items via our experienced CAD design team or adapt existing pieces to suit individual requirements. Our own manufacturing facility specialises in working with a variety of different materials and finishes including aluminium, steel, bronze, brass, wood, parchment, lacquer, antique mirror, eglomisé, gilding and metal leaf.

Please contact the showroom if you have a particular project in mind and wish to discuss it further.

UNITED KINGDOM

41, Belgravia²
 Athenaeum Hotel, London
 Babington House, Somerset
 Bailiffscourt Hotel, Climping, W Sussex^{*}
 Bedford Lodge Hotel, Newmarket
 Berkeley Hotel, London
 Browns Hotel, London[†]
 Chilton Park Hotel, Lenham, Kent^{††}
 Christchurch Hotel, Christchurch
 Claridges, London
 Dart Marina Hotel, Dartmouth
 Dean Street Hotel, London[‡]
 Devonshire Arms Hotel, Skipton^Δ
 Dormy House Hotel, Worcester
 Gilpin Hotel & Lake House, Windermere
 Grosvenor House Hotel, London
 Grosvenor Pulford Hotel & Spa, Chester
 Hilton London, Green Park^{*}
 Hilton Waldorf Astoria, London^{*}
 Hogarth's, Solihull
 Hyatt Regency, London
 Lainston House Hotel, Winchester
 Le Méridien Piccadilly, London[†]
 Mandeville Hotel, London
 Manor Hotel, Leamington Spa
 Mallory Court Hotel, Leamington Spa
 Norton House Hotel & Spa, Edinburgh^{††}
 Nutfield Priory Hotel & Spa, Nantwich^{††}
 Oakenden Manor[§]
 Old Government House Hotel & Spa, Guernsey²
 Pennyhill Park Hotel & Spa, Bagshot^Δ
 RAC Club Pall Mall, London
 Roslin Beach Hotel, Southend-On-Sea
 Rookery Hall Hotel & Spa, Redhill^{†††}
 Rudding Park Hotel & Country Club, Harrogate
 Rydges Kensington Plaza, London
 Salcombe Harbour Hotel, Salcombe
 Sheraton Skyline Hotel, Heathrow
 Soho House, London²
 Stanley House Hotel, Lancashire
 Summer Lodge Country House, Dorset²
 The Abbey Hotel, Bath
 The Acorn Inn, Dorset²
 The Bloomsbury Hotel, London[§]
 The Chesterfield, Mayfair²
 The Duke of Richmond, Guernsey²
 The Egerton House, Knightsbridge²
 The Halcyon, Bath
 The Hampshire, London[†]
 The Headland Hotel, Newquay
 The Milestone Hotel, Kensington²
 The Montague on the Gardens, Bloomsbury²
 The Pig Hotel, Brockenhurst[§]
 The Pig in The Wall, Southampton[§]
 The Rubens at the Palace, London²
 The Westbury Hotel, Dublin²
 Waldorf Astoria London, Syon Park^{*}
 Wentbridge House Hotel, Pontefract

BELGIUM

Amigo, Brussels[†]

CANADA

The Four Seasons, Toronto

CROATIA

Hotel Esplanade Oleander, Zagreb

FRANCE

Warwick Hotel, Paris
 Hotel Recamier, Paris

GERMANY

Soho House, Berlin

GREECE

King George, Athens²
 Olympia Riviera, Cap Sounio²

HONG KONG

Lanson Place Hotel

IRELAND

Castle Durrrow, Co Laois
 Castle Knock, Dublin
 Planet Hollywood Bar, Dublin

RUSSIA

Astoria Hotel, St Petersburg²
 The Four Seasons, Moscow

SOUTH AFRICA

Bushmans Kloof, Cederberg Mountains²
 The Oyster Box Hotel & Spa, Kwa-Zulu Natal²
 The Twelve Apostles, Cape Town²

SWITZERLAND

Hotel d'Angleterre, Geneva²
 The Alpina, Gstaad

USA

Crosby Street Hotel, New York/
 Ritz Carlton, Laguna Beach
 Soho Beach House, Miami[†]
 Soho House, New York²
 The Chesterfield, Palm Beach²
 The Dupont Circle Hotel, Washington DC²
 Virginia Hotel, Cape May

² Doyle Collection

^Δ Exclusive Hotels

[†] Firmdale Hotels Group

[‡] Grecotels

[§] Handpicked Hotels

^{*} Hilton Hotels

^{††} Historic Sussex Hotels

^{‡‡} Home Grown Hotels

^{ΔΔ} Radisson Edwardian

²² Red Carnation Hotels

^{†††} Review Hotels

^{††††} RF Hotels

²²²² Soho House Hotels



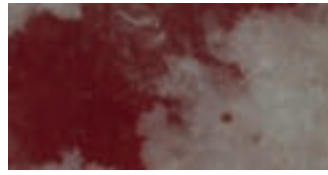
Oyster Box Hotel, Sea Facing Cabana, Red Carnation Hotel Group



River Countess State Rooms, Red Carnation Hotel Group Design Team www.uniworldrivercruises.co.uk

Hotel du Vin Group (Birmingham, Harrogate, Henley, Tunbridge Wells, Winchester)
 Uniworld River Cruises Group (Boutique Cruise Ships)

finishes



CRE - CEBU RED VELLUM



GLD - GOLD



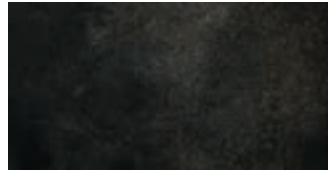
MGR - MOUNG ROSEWOOD



ABS - AGED BRASS



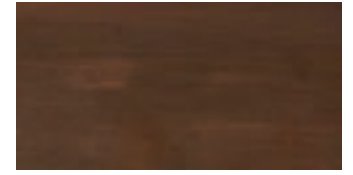
BLG - BLACK LACQUER GILT



CVB - CEBU BLACK VELLUM



GSO - GESSO



PAC - PATINATED COPPER



AM - AGED MIRROR



BLK - BLACK



DMY - DARK MAHOGANY



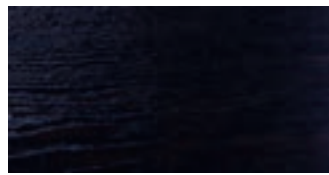
HOK - HOBBS OAK



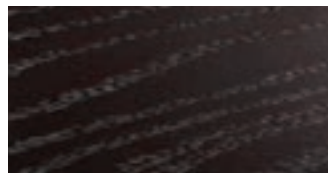
PBV - PAKISTAN BROWN VELLUM



AMB - ANTIQUE MARBLE



BMD - BRUSHED EBONISED OAK



DOL - DARK OAK LIMED



HSM - OFF WHITE PAINT



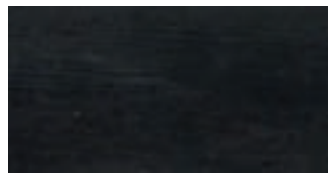
PUT - PUTTY



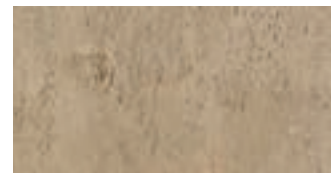
ANC - ANTIQUED NICKEL CHROME



BON - BONE



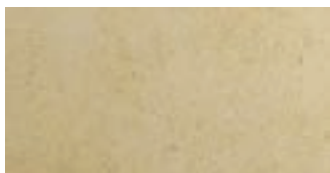
EDA - EBONISED DRY ACACIA



IRS - IRONSTONE



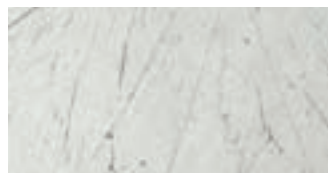
RUS - RUSTIC OAK



AOB - ANTIQUE OLD BED



BRT - BLACK CRACKLE



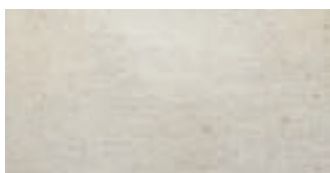
EGL - VERRE EGLOMISÉ



KGR - FRENCH GREEN PAINT



SBG - SUPERNOVA GOLD



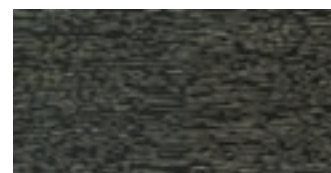
ASA - ANTIQUE SILVER



BRV - BROWN VELLUM



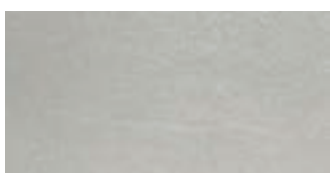
FLG - FOOLS GOLD



KLO - LIMED BLACK OAK



SNT - SANTOS ROSEWOOD



ATA - SILVER LEAF



CAB - CHALKY AGED BROWN



FMT - FRANK METAL



LOL - LIGHT OAK LIMED



SYC - SYCAMORE



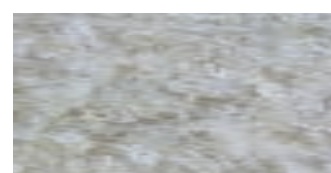
BAO - BLEACHED AGED OAK



CCG - CURVY CONSOLE GREY



FRL - FRANK LEATHER



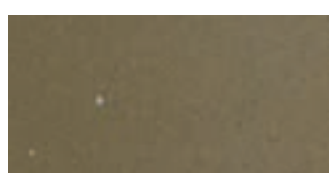
LYC - LYCHEN



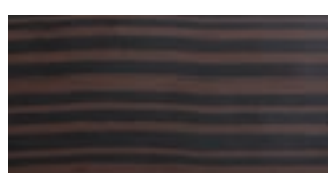
VBL - BLUE VELLUM



BCO - BLACK CERUSED OAK



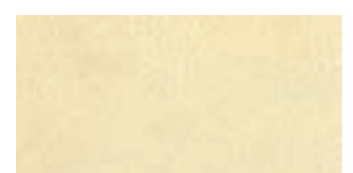
CGL - CORTES GOLD



FXE - FAUX EBONY



MGD - EBONISED OAK



VEL - VELLUM

New London Shop

Queen's Elm Parade, Fulham Road, London SW3 6EJ – On the corner of Fulham Road & Old Church Street

London UK
Tel +44(0) 20 7622 2928
sales@julianchichester.com



Julian Chichester



Follow @JulianChich

New York Showroom

New York Design Center, 200 Lexington Avenue, Suite 604, New York, NY 10016

New York USA

Tel 1 646 293 6622
sales@julianchichesterusa.com

TERMS & CONDITIONS

Descriptions and illustrations of any goods or materials are intended to be only a general representation thereof and are not intended to be reliable with regard to details or colouring.

All measurements are approximate Width x Depth x Height. Prices for special sizes are available upon request. All items must be ordered in writing using the codes listed herein. Please read our full terms and conditions, available upon request.

COPYRIGHT

Copyright for all material in this document, in print, in digital format or online including, without limitation, text, logos, photographs and all other artwork, is copyright material of Julian Chichester. Permission to copy or otherwise use such material must first be obtained from the author.

WITH GRATEFUL THANKS

Showrooms at The Imperial Laundry for their help in supplying various props, including Daniel Mankowitz and Baroncelli. Cover photography by Anthony Llewellyn. Studio photography by Richard Lewisohn, Johnny Pilkington & Anders Gramer. Printed in London by The Colourhouse.



BROCHURE & WEBSITE DESIGNED BY

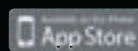
Velvet
08456 434 101

JULIAN CHICHESTER



London UK
Tel +44(0) 20 7622 2928
sales@julianchichester.com

New York USA
Tel 1 646 293 6622
sales@julianchichesterusa.com



Julian Chichester



@JulianChich

BESPOKE SERVICE
AVAILABLE

www.julianchichester.com