

INTOUCH

.....
Spring Issue
2016

THE CELEBRATION ISSUE

KING'S
College
LONDON

ALUMNI OFFICE
+44 (0)20 7848 3053
alumoff@kcl.ac.uk

Virginia Woolf Building
King's College London
22 Kingsway
London WC2B 6LE

© King's College
London 2016

InTouch is published by the university's Fundraising & Supporter Development Department. The opinions expressed in it are those of the writers and not necessarily those of the university.

EDITORIAL

+44 (0)20 7848 3053
alumoff@kcl.ac.uk

EDITOR

Jennifer Newman

CONTRIBUTORS

Alexander Garrett, Jamie Leatherbarrow, Helen May, Tim Spector, Siobhan Wakely, Alison Wolf, Sophie O'Gorman

PHOTOGRAPHY

Eamonn Deane, Michael Donald, Adrian Royale, David Tett, Nick Wood

ILLUSTRATION

Alex Green, FolioArt

DESIGN

pslondon
+44 (0)20 7375 6450
Approved by
brand@kcl.ac.uk

PRINT

ImageData

InTouch has been produced using paper from sustainable sources and bleached using an elemental chlorine-free process. The paper is produced at a mill that meets the ISO 14001 environmental management standard and the EMAS environmental management standard. The magazine is fully recyclable.

WELCOME TO THE SPRING 2016 INTOUCH, OUR CELEBRATION ISSUE.



What are we celebrating? First of all, we're celebrating the brand new design of *InTouch*, developed to reflect the calibre of the King's community. Second, and most importantly, we're celebrating the fantastic news that the World questions | King's *answers* campaign has reached its astounding target of £600 million. You can read more about the world-changing research, projects and people that the campaign has supported, as well as personal notes from Chairman of the Campaign Board Sir John Major and President & Principal Edward Byrne in the coming pages.

But the celebrations don't stop there. Looking ahead to Rio 2016, it might be presumptuous to say we're already expecting success, but we can certainly celebrate the strong representation of King's alumni and students who are aiming to take part in this year's Olympic and Paralympic Games. Along with Olympic-veteran Katherine Grainger CBE, King's is also proud to be supporting current students Dina Asher-Smith, the fastest British woman in history, and sprinter Laviai Nielsen, along with Paralympic hopeful and King's alumna Liz Saul.

I hope you find that the quality of the content is as high as ever and, while some changes have been made, many of your favourite features remain. You'll also find additional exclusive *InTouch* content published on our new and improved website, alumni.kcl.ac.uk. Throughout the issue, we've highlighted where you can read more and invite you join the conversation online – we look forward to hearing what you have to say.

This is also my first issue as Editor, and I would welcome any comments or feedback you may have. You can write to me online at alumoff@kcl.ac.uk with the subject line '*InTouch*' or send your letters to our postal address.

With warm regards,

JENNIFER NEWMAN
EDITOR

JOIN THE CONVERSATION BY JOINING
OUR ALUMNI COMMUNITIES:

[facebook.com/
KCLalumni](https://www.facebook.com/KCLalumni)

[@KCLalumni](https://twitter.com/KCLalumni)

[alumni.kcl.ac.uk/
LinkedIn](https://www.linkedin.com/company/alumni.kcl.ac.uk/)

IN THIS ISSUE

Spring 2016

02

INSIDE KING'S
PUTTING ACADEMIA
INTO ACTION

Professor Jonathan Grant, Assistant Principal for Strategy at King's, looks to an exciting academic future in the lead up to our 200th anniversary year.

03

CAMPAIGN UPDATE
WORLD QUESTIONS |
KING'S ANSWERS

Celebrating the success of King's campaign to tackle some of the world's biggest questions.

14

**THE PHILOSOPHY
OF GIVING**

Entrepreneur George Koukis explains why he supports King's and Evelina London.

16

KING'S DEBATE
IN OR OUT?

As the EU referendum looms, our panel discuss the implications and issues surrounding Brexit in the first of our King's Debates.

22

KING'S OLYMPIANS
GOING FOR GOLD

We introduce some of the talented King's students and alumni going for gold in Rio, and take a look at the Legacy of London 2012.



24

**ENTREPRENEUR'S
MARKET**

King's Business School places entrepreneurship at its core. Be inspired by our entrepreneurial alumni.

21

LIVING ABROAD

King's alumnus, Kayvan Hazemi Jebelli, shares his thoughts on living abroad, and the value of the international King's community.



12

**HOW LONDON
HAS CHANGED**

We look at the changes to London — and to King's — since 2010, the launch of World questions | KING'S answers.



OTHER FEATURES

EDUCATION FOR ALL	10	NEW APPOINTMENTS	34
KING'S MATHS SCHOOL	11	ALUMNI EVENTS, BENEFITS & SERVICES	36
ADVICE FROM THE EXPERTS	27	CLASS NOTES	38
WE MET AT KING'S	28	OBITUARIES	39
KING'S IN THE NEWS	30	YOU RECOMMEND	40
INTERVIEW WITH PROFESSOR RUSSELL GOULBOURNE	32		

YOUR VIEWS:
The future
for King's

In 2029, King's will celebrate its 200th anniversary, and alumni are invited to contribute to the strategy that will take us there. Professor Grant, who will lead this work, explains why it is so important.

'High quality research and education at King's will remain important, but a third major area for us could be developing activities that impact directly on society,' says Professor Grant who, as Assistant Principal for Strategy, is working with the King's community to generate ideas. 'Our support in Sierra Leone during the Ebola crisis is a good example, as well as our new Maths School for talented young Londoners.'

Make your voice heard
'We need to respond to the challenges of an increasingly complex world,' says Professor Grant. 'Alumni can play an important role in contributing to this new vision for King's.'
A Green Paper on King's draft strategy will be published and made available to the King's community. Alumni are encouraged to comment on this paper and contribute their ideas ahead of the final document being launched in January 2017.

You will be able to read the green paper and give your views until 9 June.

FIND OUT MORE AT

[alumni.kcl.ac.uk/
Strategic
Vision2029](http://alumni.kcl.ac.uk/StrategicVision2029)

Professor Jonathan Grant

PUTTING ACADEMIA INTO ACTION

Professor Jonathan Grant may not be someone you're already familiar with, but over the next few years the work he's steering will have a profound effect on King's. An alumnus of King's, he returned in 2014 as Director of the Policy Institute and has since been appointed Assistant Principal for Strategy, where he will help guide the strategic vision of the university to 2029, King's 200th anniversary.



SERVICE TO SOCIETY
An experienced and persuasive advocate for accountability, in his 2015 inaugural lecture Professor Grant made the case that it is vital to understand how science funding translates into policy if society is to benefit. With the Research Excellence Framework and the new Teaching Excellence Framework, universities have to prove their value. Professor Grant is confident that King's has a head start and will only build on its already excellent performance. 'Serving society is in our DNA,' he says. 'It's part of our social contract and duty to demonstrate the value of our research and education.'

JOINING THE DOTS
Once a PhD student in King's Department of Anatomy and Human Biology, Professor Grant understands the endurance and dedication required in research labs. 'After graduating from

the LSE, my tutor introduced me to a King's geneticist who, unusually, needed a social scientist for his project,' he says. 'I spent several years working next to wet-lab space and the dissection room but did not enjoy the experience so, after gaining my PhD, I vowed to stay away from academia and embarked on a career in policy analysis and advice.'
Nearly two decades later, however, he was tempted back to King's and the Policy Institute, where his refreshing, can-do attitude is building the university's reputation in the policy sphere. 'We have some of the brightest and best brains at King's, but some academics struggle to translate and communicate their research into policy and practice,' he says. 'Our job is to facilitate that by providing an interface between our outstanding university and the world outside.'

KING'S AT THE HEART OF INFLUENCE

Over the last year, Professor Grant has attracted political heavyweights including Dame Margaret Hodge, Ed Balls, Charles Clarke, Lord Willetts and Baroness Jay to join as Visiting Professors and participate in events open to the King's community. Alongside former civil servants, journalists and independent thinkers, they are all members of the university's high-level Policy Circle.

Professor Grant has also introduced the new 'Policy Idol' competition, encouraging students and staff to harness their blue-sky thinking and pitch world-changing ideas. Last year, student Vageesh Jain won with his case for reorganising the World Health Organisation following the Ebola crisis. His idea, together with pitches from all the finalists, was sent to every new MP in 2015.

'These ideas only carry impact if they reach key policymakers,' says Professor Grant. 'Our position near Westminster and our reputation as a top UK university mean we are ideally placed to influence the national agenda,' he says. 'I hope that building relationships with policy leaders will be transformative for King's.'



CELEBRATING SUCCESS

World questions | KING'S answers

In 2010 we publicly launched our World questions | KING'S answers campaign. We pledged to answer some of the biggest questions facing humanity — questions about cancer treatment, neuroscience and mental health, leadership and society, child health, and global power. Thank you for your support over the last five years, and for helping us to raise an astonishing £610 million. Without your help, we would not have been able to achieve all of this...



CONTINUES OVER →

King's is one of the world's leading research universities. We have service to society in our institutional DNA, and because of this we are best placed to use our considerable knowledge to make greater progress towards solving some of the greatest challenges modern society faces.

Thanks to the generous contributions of our alumni and friends — in the UK and overseas — we're delighted to announce that we have achieved the tremendous goal of raising £610 million. The impact of the campaign has reverberated far beyond the university's campuses, making a huge difference to people's lives across the world.

We set out to address some of the most urgent challenges facing humankind, using King's internationally recognised experts, worldwide links and central London location. We are proud to have made outstanding achievements in answering several of the most pressing questions, reinforcing King's position as a pioneer in world-class research, none of which would have been possible without you.



1,500

STUDENTS ARE BENEFITTING FROM BURSARIES, SCHOLARSHIPS AND PRIZES



THE RT HON SIR JOHN MAJOR KG CH
CHAIRMAN,
WORLD QUESTIONS | KING'S
ANSWERS CAMPAIGN BOARD

I am delighted to have been able to lead a fundraising campaign with such global scope. Since its public launch in 2010, the World questions | KING'S *answers* campaign has demonstrated how well-placed King's is to respond to the challenges of a world moving faster than is, perhaps, comfortable — and which throws up questions that seem impossible to answer. The easy option would be to leave

the most challenging issues for others to address — but that's not the King's way. Instead, this campaign focused on funding work which will benefit millions of people, in every part of the world, for generations to come.

On behalf of the Campaign Board, I would like to thank you — the alumni — for your tremendous support and commitment, without which this campaign would not have been possible. On behalf of all those who have benefited from your huge generosity, a heartfelt thank you.

It has been a privilege to Chair the World questions | KING'S *answers* Campaign Board. Due to my personal connection with King's — and belief in the work of the university and its valued partners — I will continue to support the fundraising initiatives of this great institution. But there are many more achievements to come, which is why I am hopeful that you will stay with us as we continue our pioneering journey.



PROFESSOR EDWARD BYRNE AC
PRESIDENT & PRINCIPAL,
KING'S COLLEGE LONDON

King's is one of the great universities of the world; a global leader in research and education at the heart of the world's greatest city. To lead such a university is a huge privilege, especially at this time of rapid development and enormous promise.

King's has a duty to serve society, and through the World questions | KING'S *answers* campaign this is exactly what we are doing. To have raised over £600m over the life of the campaign is a remarkable achievement, and one we can all be proud of. Thanks to the overwhelming support we've had from our alumni, friends, staff and students - in the UK and overseas — we're helping to transform millions of lives around the world for the better.

In celebrating the success of World questions|KING'S *answers* I must acknowledge the distinguished decade-long leadership of my immediate

predecessor, Professor Sir Richard Trainor. His legacy is seen not only in spearheading this immensely successful fundraising campaign, but also in King's ascent to 16th in the QS University World Rankings.

I would also like to highlight the work of my fellow Campaign Board members, who have so generously given their time, expertise and strategic advice to help us reach our goals. Sir John Major has been an engaged and engaging Chairman, and I am delighted that he will be staying on in the role as our fundraising enters its next phase.

Our transformative work is not yet done — there are still many more exciting developments yet to come. I am particularly looking forward to the university's imminent expansion into the Aldwych Quarter, formerly known as the Bush House complex, next to our historic Strand Campus in central London. With your support, we can continue to use our academic expertise, central London location and global reach to help deliver solutions to some of the world's most urgent questions around accessible education, healthcare, business and innovation, governance, and more.

I look forward to sharing these plans with you in due course, and in the meantime thank you again for making World questions|King's *answers* such a success.

WATCH THE CAMPAIGN VIDEO HERE

 [kcl.ac.uk/kingsanswers](https://www.kcl.ac.uk/kingsanswers)



41k

DONORS TO THE CAMPAIGN



88

DIFFERENT COUNTRIES THAT DONATIONS CAME FROM



2k

CANCER PATIENTS CURRENTLY TAKING PART IN KING'S CLINICAL TRIALS

CONTINUES OVER →

TAKING A CLOSER LOOK

In the following pages we highlight just some of the world-changing research, treatments and opportunities that are made possible thanks to alumni donations.



#1
RANKING FOR RESEARCH
(Research Excellence Framework ranking, December 2014)

THE DICKSON POON SCHOOL OF LAW

PUSHING THE BOUNDARIES

The Dickson Poon School of Law, established in 1831, is one of the oldest in England and is recognised as one of the leading law schools in the world.

Thanks to a transformational donation from Sir Dickson Poon CBE SBS FKC, the School has gone through unprecedented growth and development. Sir Dickson's donation, the largest in King's history, is part of a £40m transformation project for the School which aims to further its reputation as one of the top law schools in the world. Thanks to this exceptional support and the generous donations from King's alumni and friends, the School has already achieved impact in several areas.

“I owe so much of the inspiration for my academic achievements to staff at King's and I feel privileged to be able to pursue my research alongside them. However, returning to King's is a choice I would not have been able to make if it were not for the generous Dickson Poon Scholarship”

ESTELLE MARKS, DICKSON POON PHD SCHOLAR



CANCER CENTRE AT GUY'S HOSPITAL

INNOVATING TO SAVE LIVES

The new Cancer Centre being built at Guy's Hospital, one of King's Health Partners, will bring cancer research and treatments together into one building, ensuring all patients benefit from King's advances in translational medicine.

By integrating treatment with clinical research, the new Cancer Centre could halve the 15 years it currently takes to get new treatments from lab to bedside. It will be home to the Experimental Oncology Institute, and an estimated 30 per cent of patients will participate in clinical trials, speeding up the search for better treatments and cures.

“In 1982 my mother had breast cancer and her consultant asked her to take an unnamed drug. It turned out to be Tamoxifen, now widely used to treat breast cancer. I did it for my children and grandchildren and future generations. You never know — the next person who does the trial might be the person that leads to a cure for that particular type of cancer.”

ROSIE HEADICAR,
BREAST CANCER SURVIVOR
AND CLINICAL TRIAL PARTICIPANT



2k
PATIENTS HAVE HELPED WITH CLINICAL TRIALS



1k
EBOLA UNITS CREATED AND SUPPORTED BY KING'S

KING'S SIERRA LEONE PARTNERSHIP

FIGHTING EBOLA ON THE GROUND

King's Sierra Leone Partnership (KSLP) has been at the heart of the international response to the Ebola epidemic.

The King's team, led by alumnus Dr Oliver Johnson, ensured that Freetown's main health facility, the Connaught Hospital, remained open while hospitals elsewhere closed. Alumni and friends generously donated £580,000 to help the King's team respond to the Ebola crisis. At the peak of the epidemic, there were 550 cases of Ebola reported each week in Sierra Leone. Thanks to your support:

- KSLP put in place a trained team of 150 national staff and over 40 international volunteers
- 1,000 units, supported by King's, managed more than 1,000 confirmed cases of Ebola
- KSLP supported units saw over 40 per cent of all Ebola cases in Freetown.

King's is committed to Sierra Leone long-term. Dr Oliver Johnson was on the frontline in Sierra Leone when Ebola struck: 'I went to King's to explain our position and I came back with full backing: not just to stay, but to gear up'.

“The whole hospital — our team, the cleaners, the doctors, everyone — rolled up our sleeves and went to work. In one evening, we shut down half of A&E, completely cleaned it, removed everything and we turned it into the 16-bed isolation unit”

DR OLIVER JOHNSON OBE,
FOUNDING PROGRAMME DIRECTOR, KING'S SIERRA LEONE PARTNERSHIP & KING'S ALUMNUS

AFRICAN LEADERSHIP CENTRE

LEADING THE WAY IN AFRICA

Many of the most profound world questions of the 21st century centre on Africa.

How can stability and peace be promoted in a continent where 40 per cent of global conflicts occur? How can a historically fragile economy and infrastructure be strengthened? How can greater diversity in leadership be encouraged? The African Leadership Centre (ALC) is a pan-African centre of excellence in peace, security and development which, powered by an African-led vision of change, trains and mentors young Africans who have the potential to lead and transform their communities and countries.

Launched in 2010 by Professor 'Funmi Olonisakin, Professor of Security, Leadership and Society at King's College London (pictured right), as a joint venture between King's College and the University of Nairobi, the ALC is developing and empowering a new generation of 'home-grown' leadership talent. Central to the work of the institute are partnerships with influential organisations such as UN Department of Peacekeeping Operations and the International Peace Institute, as well as many African universities and NGOs.

Success stories from the first six years of the ALC include establishing the Professional Training Programme which offers a practical, distinctly African perspective to solving peace and security problems in the continent. The Centre is also proud of its fellowship programme which, thanks to benefactor support, has so far trained 96 African Leadership Fellows, many of whom now hold prominent positions in governmental organisations, policy institutions, NGOs, charities and academia.

“ My training at the ALC was a transformational experience for my career and personal development. What the ALC has done is to broaden the definition of leadership in Africa rather than just narrow it down to politicians ”

PHIDELIA AMERY,
PEACE AND SECURITY ADVISER FOR THE ECONOMIC COMMISSION OF WEST AFRICAN STATES IN ABUJA, NIGERIA; ALC FELLOW



96
AFRICAN LEADERSHIP
CENTRE FELLOWS



NURTURING TALENTED STUDENTS

HELP WHERE IT'S NEEDED

Sometimes being awarded a place in a top university can feel like winning the lottery — but when limited finances make that dream impossible, it can mean that the brightest students are unable to flourish.

Currently, the most disadvantaged 20 per cent of young people are still nearly seven times less likely to attend university. However, thanks to scholarships, bursaries and prizes funded by alumni and friends, 1,500 students each year now have access to a King's education and it is already making a significant difference in a number of ways.

- King's offers Care Leaver bursaries for students who have spent time in foster care.
- Emergency hardship funding for students from low income backgrounds who are faced with sudden financial difficulty, such as a parent losing their job, going through a divorce or even bereavement.
- Over 3,500 generous alumni and supporters have bought books for our libraries over the last five years.

“ This has been such a relief to my family and I, as the stress the finances were causing was immeasurable. I cannot put into words quite how grateful my family and I are for your support ”

LIANNE DOBSON,
RECIPIENT OF COLIN HANCOCK DENTAL HYGIENE AND THERAPY BURSARY



6.5k
PATIENTS HAVE BEEN TREATED THANKS TO GIFTS

A LASTING LEGACY

MAKING YOUR MARK

John Taylor (Guy's, Medicine, 1977) made his mark not just through his long medical career, but also thanks to the generous gift he gave to the Cancer Centre when he died in 2014.

In his own words;

“ My happiest memory was the pride of being a student at Guy's Hospital Medical School. I wanted to recognise the outstanding clinical education I received, based in facilities that were in the main constructed through the philanthropy of others over 300 years. ”

After graduating from Guy's in 1977, John worked at the hospital as a surgeon. On being diagnosed with cancer, he was treated at the same hospital where he had studied. Following his death, his legacy has contributed to the development of the Cancer Centre and has helped to:

- fund one of the largest cancer centres in Europe, meeting the needs of over 2 million people
- treat 6,500 cancer patients each year
- deliver patient-centred care, where patients are truly at the heart of our services.

While John may be gone, thanks to his impressive career and unwavering generosity, he is certainly not forgotten.

JOIN THE CELEBRATION:

[kcl.ac.uk/kingsanswers](https://www.kcl.ac.uk/kingsanswers)

#KingsAnswers

INSPIRATION AND EDUCATION for all

It's no secret that London is an expensive place to live. Although the city offers many unique and unmissable opportunities for students, there are undeniably tough challenges when it comes to finance. Rising tuition fees and living costs mean that students often struggle to support themselves, but we believe that financial hardship shouldn't be a barrier that prevents talented students from achieving academic success.

Our alumni have made fantastic contributions to our appeals and continue to help tackle student hardship through funding scholarships and bursaries, enabling the best and brightest students to fulfil their potential. This financial support helps students pay for textbooks, equipment, accommodation and travel cards — all of the basics essential for academic success.

This support also allows students to enjoy a truly memorable experience at King's.

Your own King's memories may be of forming lasting friendships; they may be of the sports teams you played for or the societies and clubs you belonged to. You may even have met your spouse during your student days, and have wonderful shared memories to look back on together.

These experiences and opportunities stay with us for life, and it is our belief that all students, from all backgrounds, should have the same opportunity to form life-changing connections, treasured memories, and an equal chance to excel socially as well as in academia.

For many students, the funding they receive is truly transformative. A 3rd year Biomedical Science student said: 'Flashing back to my first year, I experienced the worst year of my life. My parents

both began to suffer from serious health problems and could no longer support me. The pressure of coping with this, alongside my studies and my part-time job, meant it all became too much. I became clinically depressed and had to seriously consider dropping out.

This scholarship has allowed me to re-direct my focus back on my studies. It has allowed me cut down the hours I work in a local restaurant which means my social life has improved too. Your contribution really changed my life.'

In our February fundraising appeal, hundreds of alumni gave back to support students facing all kinds of financial hardship. As part of our appeal, donors were asked to return a postcard with a message for a scholarship or bursary recipient. Below are just a couple of the wonderful and heart-warming messages we received. Thank you for your support.

Being at King's College is very special - an experience that will stay with you all your life - make the most of it!

cherish your time at King's. work hard, question and reflect. Help others around you and remember, learning is lifelong... enjoy!

If you would like to help more talented students to come to King's and thrive, no matter what their financial circumstances, please donate today.

CALL US ON:

+44 (0)20 7848 3053

OR VISIT:

alumni.kcl.ac.uk/give



WHAT I'VE LEARNED

HELPING TO FOUND A SPECIALIST FREE SCHOOL

King's Professor Baroness Alison Wolf is a British economist and founding Chair of King's College London Mathematics School. In this article, adapted from a piece published in The Spectator in September 2015, she explains how the school is already producing impressive results.

King's College London Mathematics School opened in September 2014. Less than two years later, it's one of the ten best state schools in the country for AS level results — and is set to be one of the very best in the country for Oxbridge and Russell Group university entry. It is a testament to the vision of the university, dedication of the head and staff, and fantastic students.

A 'free school', teaching talented committed 16-19 year olds, the school is paid for by the government, but sponsored and nurtured by King's. The school exists to nourish untapped potential here in the UK — and it's working.

University offers made to students were impressive. 17 per cent of students, and more than a fifth of the girls, received offers from Oxbridge, and many

97% OF STUDENTS ACHIEVED AN 'A' IN MATHS

90% OF GRADES IN MATHS & FUTURE MATHS WERE 'A'

* Names have been changed

received offers from King's itself. In the meantime, they're winning medals, learning foreign languages, and founding almost as many societies as there are students in the school.

The surnames on our roll are modern London in microcosm. 43 per cent of our first cohort are girls, way above the national average for Further Maths, let alone for Physics.

Our students are also seriously motivated. Kim*, for example, comes from a single-parent family, has a three hour daily commute and a part-time job. Thanks to the Maths School, she achieved AAA in Maths, Further Maths and Physics last summer.

So how does this happen? First rate teachers are essential. Our school hires teachers who are excellent mathematicians. They are also mostly young,

because that is what we can afford. Running a state school, with today's sixth form funding levels, is a combination of penny-pinching, improvisation and slog.

In keeping with King's service to society, the school runs an outreach programme, bringing mathematics to younger pupils in years 10 and 11 and targeted at low-income areas. Many of the pupils travel long distances, week after week, to attend after-school sessions.

British families no longer need to be told that university is a good idea. What blocks social mobility is the uneven quality of schooling. Universities could do far more to bring really high quality teaching to motivated, talented teenagers who are still in school. Helping to do this through King's Maths School has been one of the high points of my career.

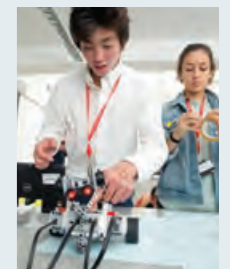
WIN! A SONY SMART WATCH

To coincide with the impressive results of King's College Maths School, the students have set you a challenge, with a chance to win a Sony SW2 Smartwatch.

Start at the circled node. Move at random, each time choosing with equal probability from the adjacent nodes. On average, how many moves will it take to return to the circled node? Try it first for the 'cliques': n vertices, all connected to each other. Then try the 'sticks' with n vertices on. Finally, try the 'lollipops': a complete clique on top of a stick. Delicious!

SEND YOUR ANSWER WITH THE SUBJECT LINE 'LOLLIPOPS' TO:

alumoff@kcl.ac.uk



THEN & NOW

Illustration by Alex Green, FolioArt

Since we publicly launched our campaign in 2010, London has changed dramatically, and King's has evolved with it.

A fantastic location, right in the heart of London has always been an important and central part of the King's student experience. As alumni, many of you will have chosen to live and work in London after graduation, while others living around the UK or overseas will undoubtedly enjoy returning to the capital and reminiscing over your student days.

Even since the launch of our World questions | KING'S answers campaign in 2010, in the past six years the urban landscape of London has undergone dramatic changes, with iconic buildings such as The Shard and 'The Cheese grater' appearing on the London skyline and the establishment of three new King's locations: Somerset House East Wing, Bush House and King's Health Partners at Guy's Campus.

King's has enjoyed a continued rise through international and UK university rankings, powered by world class research and excellent teaching, however tripling tuition fees have made the financial challenges facing today's students much tougher.

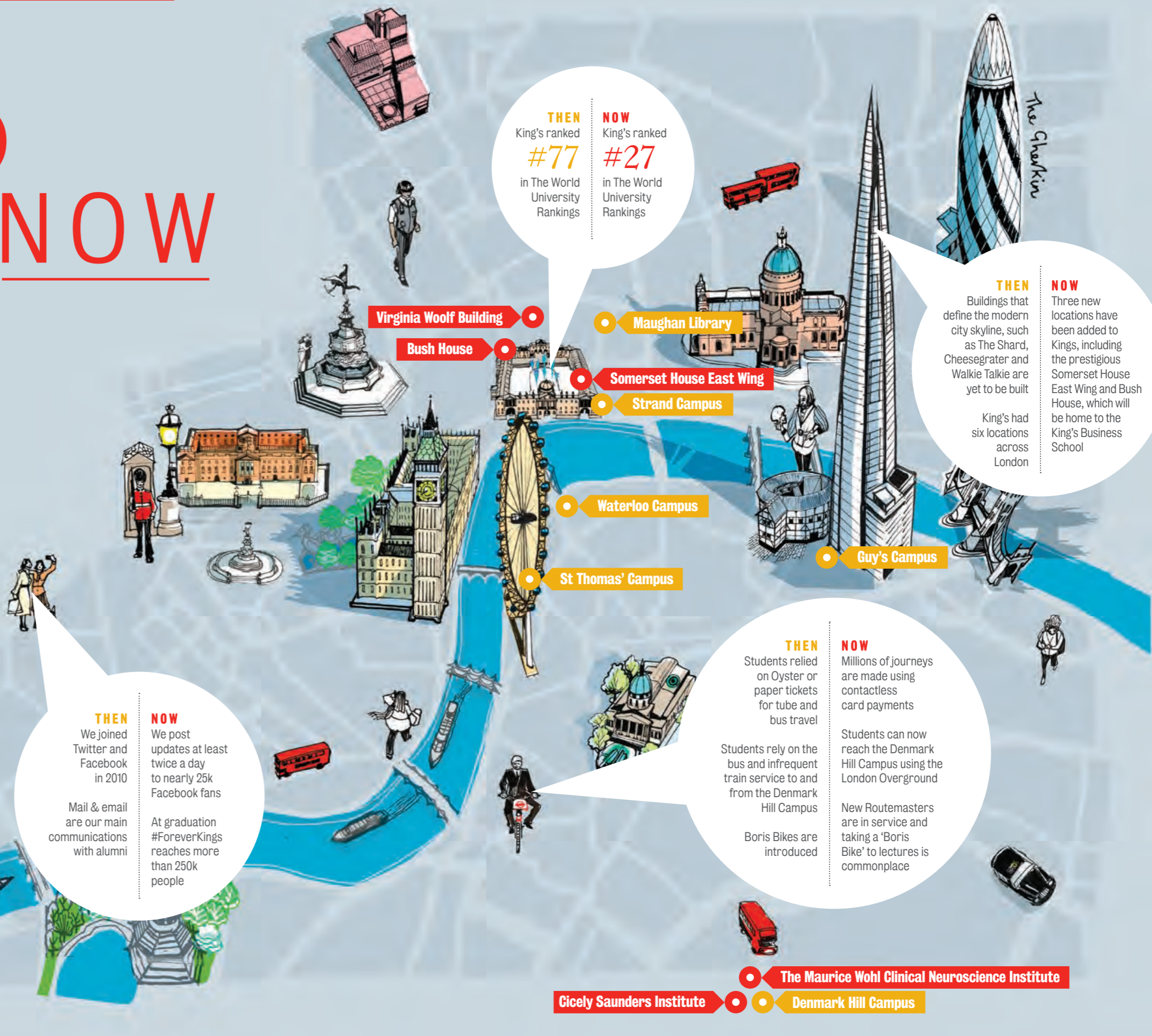
In addition, our communication resources are now vastly different — alongside this print edition of *InTouch*, we are bringing this graphic to you on our new alumni website and inviting you to share your own memories of your time as a student via our social media channels.

It has never been easier to keep in touch, so why not share your thoughts with us about your time at King's?

JOIN THE CONVERSATION:

#ForeverKings

- 2016 KCL Buildings
- 2010 KCL Buildings



THEN
King's ranked #77 in The World University Rankings

NOW
King's ranked #27 in The World University Rankings

THEN
Buildings that define the modern city skyline, such as The Shard, Cheese grater and Walkie Talkie are yet to be built

NOW
Three new locations have been added to Kings, including the prestigious Somerset House East Wing and Bush House, which will be home to the King's Business School

THEN
We joined Twitter and Facebook in 2010

NOW
We post updates at least twice a day to nearly 25k Facebook fans

Mail & email are our main communications with alumni

At graduation #ForeverKings reaches more than 250k people

THEN
Students relied on Oyster or paper tickets for tube and bus travel

NOW
Millions of journeys are made using contactless card payments

Students rely on the bus and infrequent train service to and from the Denmark Hill Campus

Students can now reach the Denmark Hill Campus using the London Overground

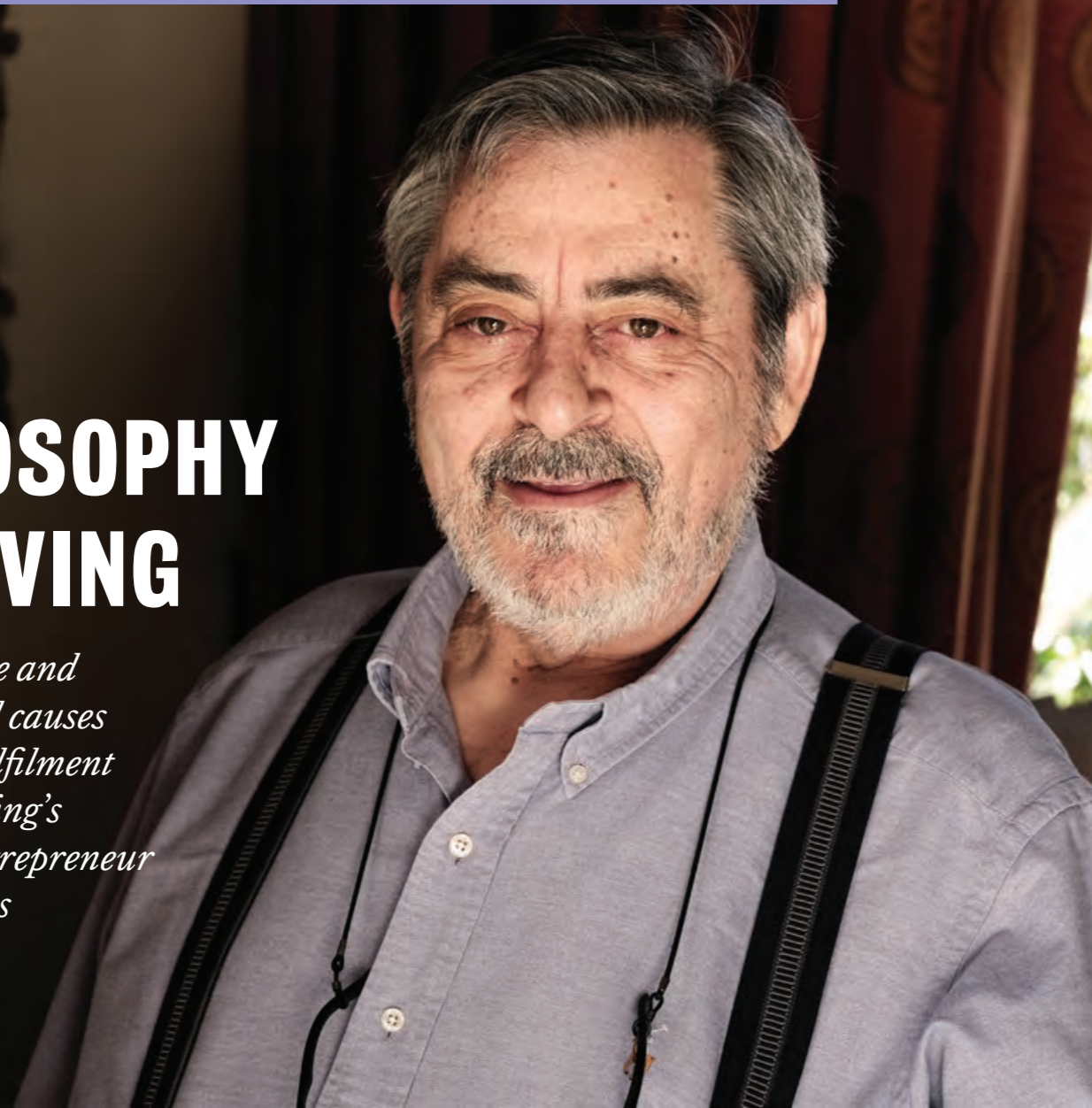
Boris Bikes are introduced

New Routemasters are in service and taking a 'Boris Bike' to lectures is commonplace

- The Maurice Wohl Clinical Neuroscience Institute
- Cicely Saunders Institute
- Denmark Hill Campus

THE PHILOSOPHY OF GIVING

Donating time and money to good causes brings true fulfilment in life, says King's donor and entrepreneur George Koukis



Growing up in post-war Greece when food and money were scarce, George Koukis spent his formative years in a loving family which taught him the value of giving to others. Seeking opportunity, George joined the migration boom to Australia in the early 1960s and settled in Sydney with his wife, Eva.

His business career has taken him from humble beginnings as the office boy at Qantas Airways, where he won the attention of senior management for developing the company's first IT system, to founding Temenos, the world-leading, Geneva-based banking software group.

Since stepping down from his chairmanship of Temenos in 2011, George has directed his energies into investing in start-ups and his philanthropic activities. He has recently donated £1.875 million to establish the George Koukis Paediatric Rheumatology Service at the Evelina London Children's Hospital. George, who is a long-term supporter of King's and Evelina London, has a personal connection with the hospital, as his daughter Joanne was diagnosed with juvenile onset arthritis and was treated at St Thomas' for many years as an adult.

■ Why do you give to King's?

I look for organisations with a long-term vision and inspired leadership. It's not the physical assets or machinery that make an organisation, it's the combined value of our ideas, dreams, aspirations and passion that makes it worthwhile, and the leadership to make that vision into a reality.

I have supported a lot of causes over the years and feel bad when I see the hypocrisy in charities which waste money and don't help anyone. I look at their accounts and if I see them misbehaving, for example when gifts do not reach the recipients, I walk away.

I have high standards and am very happy with King's. It is not only delivering exceptional health services and helping people, but also takes education and research very seriously. I believe that King's has the vision, ambition and leadership to make a real difference.

“It's not the physical assets or machinery that make an organisation, it's the combined value of our ideas, dreams, aspirations and passion that makes it worthwhile. I believe that King's has the vision, ambition and leadership to make a real difference”

GEORGE KOUKIS

■ What motivated your gift to the paediatric rheumatology unit at Evelina London?

It was a very personal reason: one of my daughters, Joanne, was diagnosed with juvenile onset arthritis in 1978 when she was just four years old. At that time the knowledge about juvenile arthritis was almost zero. I saw her suffering immensely. She couldn't run or do sports like other children and was in pain 365 days of the year. It affected her quality of life and her self-esteem.

That's why I'm interested in funding research into finding the causes of juvenile onset arthritis and associated conditions. I want to see young people become productive members of society by eradicating this illness.

Joanne is now closely involved with my philanthropy and she and I make decisions about projects together.

■ What advice would you give someone thinking about making their first charitable gift?

Making the initial decision to get involved is the hardest part. Reflect on why you're here and what legacy you want to leave behind. If you have the capacity to make a difference — by giving your time or making a donation — I strongly advise you to do it. You will never experience a greater reward or sense of achievement. Giving makes you feel stronger, almost invincible, and you make better decisions in other areas of life because you have greater clarity. I encourage everyone to test my theory!

Money is a more universal way of giving, but time is just as important because you will also become a good role model for children and young people.

I'm worried about charities and universities, because there will be less government funding available in the next ten years than there has been in the previous decade. Unless individuals like us get involved we could be on the brink of catastrophe. So if you give your time, or your money, you will set a great example and help to create a better functioning society.

■ You have a wonderfully long-term vision. What are your aspirations for the next 20 years?

Why not infinity? My thinking is very long-term! At Evelina London, for example, I am aiming to create an annuity that will enable more investment in research and education over a long period of time because so much still needs to be done.

For me, the things that matter most are family and contributing to society through running a successful business or charitable project. In both worlds, long-term giving provides the ultimate fulfilment — we must all put something back.

BEHIND THE SCENES

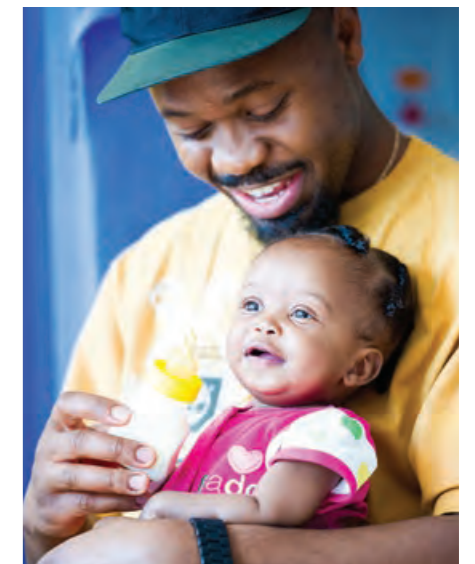
Evelina London

Evelina London is one of only two specialist Children's Hospitals in the capital.

Operating as part of the King's Health Partnership, the hospital provides ground-breaking treatment to children with a hugely diverse range of physical and mental medical conditions, offering world-leading care to every child and family. Evelina is located on site at St Thomas' Hospital, within an award-winning building specifically designed around the needs of children and their families: themed floors, a conservatory, rooms with views, sunlight and fresh air make their hospital stay as comfortable as possible.

The hospital treats children of all ages; from babies in the womb, through to young adulthood. Each year 50,000 patients pass through its doors.

Evelina is an integral part of the King's Health Partnership, which brings together three of the UK's leading NHS trusts — Guy's and St Thomas', King's College Hospital and South London and Maudsley NHS Foundation Trusts — with the world class medical education at King's. Your continued support and donations allow Evelina to maintain and improve on this essential service.



What are the big questions facing the world today? How is King's informing the discussion? We ask members of the King's community to dissect the issue.

IN OR OUT? THE EU REFERENDUM

On June 23rd, Britons will vote in a referendum to decide whether the UK will remain within the European Union. It's a moment with implications for almost every aspect of our lives.

Clockwise from top right
 Dame Margaret Hodge
 David Cowling
 Lord David Willetts
 Charles Clarke



We spoke to eminent political figures and Visiting Professors at King's Policy Institute to find out what's really at stake with the EU Referendum.

RIGHT ON TIME?

Is it any surprise that the referendum is taking place so early in this Parliament? David Cowling, the BBC's editor of political research, says not: 'After its election victory the Government wanted to clear the decks. What they could not afford was to have five years of internal strife, dissension and division.'

Charles Clarke, former Labour Home Secretary, agrees: 'One of the big negatives has been the uncertainty about Britain's position in the EU, which has economic and social consequences. The longer that goes on the worse it will be, so the sooner we get a decision the better.'

THE RATIONALE

But was it a sensible decision by David Cameron to promise a referendum? Clarke believes it was the right choice. 'Since about 2008 I've supported the idea of a referendum because I felt this was a boil that needed to be lanced in British politics. I've always opposed other referenda — for example on EU constitutional changes. However, on the in or out it's an existential question and I think there's a good chance people will vote on the substance of the issue.'

Dame Margaret Hodge, Labour MP for Barking and, until recently, Chair of the Public Accounts Committee, disagrees, seeing the referendum as a miscalculation by the Prime Minister inspired by the short-term motive of party management. 'If you really wanted a referendum, have it on an issue the voters care about, like how we fund the health service,' she says.

Lord David Willetts, who served as Minister for Universities and Science in the previous Conservative-led coalition government, and now sits in the House of Lords, believes there is a fundamental question of national identity to be addressed. 'If you think about the hopes of people when we joined the European Community in 1973, instead of a process where we've become more and more comfortable with our position, in the last 10 or 20 years we seem to have become more uncomfortable,' he says. 'The referendum is one way to try and solve that and to stabilise the situation.'

“I've supported the idea of a referendum because I felt this was a boil that needed to be lanced in British politics”

CHARLES CLARKE,
 FORMER LABOUR HOME SECRETARY

But Cowling sees it purely as a matter of political expediency. 'Europe has obsessed the British political class ever since we joined,' he says. 'It's come close to destroying both major political parties — first Labour in the late 1970s and early 1980s; now the Conservatives. But as far as the Great British public is concerned, they don't give a tuppenny.' In opinion polls where voters are asked unprompted to list the most important issues facing the UK, he says, Europe ranks a mere two per cent.



THE ISSUES

So is the electorate ready to make an informed choice, and what are the issues which will decide the referendum? David Cowling is pessimistic. 'After 40 years of membership, what awareness is there of Europe, what it stands for and how it influences our lives? Utterly negligible for most people,' he laments. 'The "In campaign" will certainly tell a positive story, but overshadowing it will be the message hang on to nurse for fear of something worse.' They'll be drawing on fears and concerns about life outside the EU.' He believes the impact of David Cameron's 'deal' with the other 27 European leaders will be 'negligible'.

CONTINUES OVER →

JOIN IN THE DEBATE:

 **#KingsDebate**

“What matters, at least as much, is the partnerships, movement of people and connections between universities in the UK and in other EU countries”

LORD DAVID WILLETTS,
FORMER MINISTER FOR UNIVERSITIES AND SCIENCE



Dame Margaret, meanwhile, believes the danger is that immigration will trump all other issues and become the pivotal one. ‘It’s very high on people’s agenda, and they will use the referendum to give their verdict on political parties’ inability to control immigration,’ she says. ‘Certainly those arguing to remain will try to make it a debate about jobs, inward investment, and security — all those reasons why we’re in Europe. Whether that cuts through to people’s thinking when they make a decision, time will tell.’

UNIVERSITIES

None of our panel sees much benefit for the universities sector in Brexit. Lord Willetts, the former Universities Minister, says: ‘Potentially, leaving could be a very significant blow to our university and research community. We perform very well in terms of securing funding from the European Research Council. What matters, at least as much, is the partnerships, movement of people and connections between universities in UK and in other EU countries.’

Dame Margaret points out that students are less likely to come to UK universities from Europe if they have to pay the full international fees. This would not be damaging solely in terms of income: ‘The richness of a university is the diversity of the student body, and the friendships you make across borders as a student stay with you for life.’

ECONOMY AND BUSINESS

Cowling observes that, ‘at the time of the 1975 referendum on our membership there was almost universal business support for staying in Europe. That’s not the case now. It’s more mixed, and the small and medium sized area (SME) has a number of people who are more sceptical and agnostic than their fore bearers.’ Fears about the value of sterling, and the UK’s credit rating will surface, but Cowling doubts whether a full and balanced debate about the economic advantages and disadvantages of membership will take place. ‘The Golden Age when everyone received the full facts before the family went to the polling station probably never existed and certainly doesn’t now.’

Charles Clarke says the biggest single risk for business will be inward investment. ‘Almost all companies which invest in the UK do so in the belief they’re investing in the single European market, and were we no longer in it, many would no longer decide to invest, or decide to disinvest.’, but Dame Margaret can see how SMEs could be more pro-Brexit:

‘Yes well they’re different aren’t they? They are like a resident — they are part of the population.’

Meanwhile, the issue of EU regulation, or ‘red tape’ so frequently highlighted by Euro-sceptics over the years, no longer has quite the same traction, according to Lord Willetts. It should in fact be seen as a positive, he argues, since the single market creates just one set of rules for 28 countries.

MIGRATION AND SECURITY

The claim that leaving the EU will allow Britain to secure its own borders is clearly set to be an important point of the referendum campaign. The Paris attacks in November had an immediate impact on the polls, shifting opinion in favour of Brexit. Yet Charles Clarke, who was Home Secretary at the time of the 7/7 attacks in London, is in no doubt that being part of the EU strengthens our security. ‘People can look at the terrible attacks in Paris and say somehow we can get behind our white cliffs of Dover and protect ourselves, but I don’t believe it. The answer is more effective measures on terrorism and organised crime, coordinated across the EU.’

Dame Margaret believes the claim that leaving the EU will allow the UK to curtail migration is flawed. The current wave of migration is a societal

change comparable to what took place in the Industrial Revolution, she says. ‘Change is hard, but kidding people you can put up the borders again after you get out is a false promise. Half of those who come to the UK from outside the EU don’t come on a visitor’s permit or as a refugee; they come on an intra-company work permit. You close one door, and another one opens.’

CONTINUES OVER →



“In opinion polls where voters are asked unprompted to list the most important issues facing the UK, Europe ranks a mere two per cent”

DAVID COWLING,
BBC EDITOR OF POLITICAL RESEARCH

BEHIND THE SCENES

King’s Policy Institute

The Policy Institute at King’s College London acts as a hub, linking insightful research with rapid, relevant policy analysis to stimulate debate, inform and shape policy agendas.

Building on King’s central London location at the heart of the global policy conversation, our vision is to enable the translation of academic research into policy and practice by facilitating engagement between academic, business and policy communities around current and future policy needs, both in the UK and globally.

The Institute combines the academic excellence of King’s with the connectedness of a think tank and the professionalism of a consultancy.

FIND OUT MORE ABOUT THE POLICY INSTITUTE AT:

kcl.ac.uk/sspp/policy-institute

“Certainly those arguing to remain will try to make it a debate about jobs, inward investment, and security — all those reasons why we’re in Europe. Whether that cuts through to people’s thinking when they make a decision, time will tell”

DAME MARGARET HODGE,
LABOUR MP FOR BARKING

THE BREXIT VISION

‘A very big weakness for the Out campaign is that there isn’t a clear picture of what the alternative is,’ comments Clarke. Lord Willetts concurs: he sees an ‘unholy alliance’ between two very different visions for the UK outside the EU, one which involves ‘pulling up the drawbridge’ and turning the clock back, the other where, ‘Britain becomes a global player, looking around the world saying we don’t want to tie ourselves to these decaying, ageing countries in Europe.’

In any case, the process of disentangling the UK from our current membership will prove Herculean, says Lord Willetts: ‘If you think of the messiest Russian oligarch divorce case in the London courts, and multiply by one thousand, you’ve got what we would be going through for about ten years.’

THE OUTCOME

So how final will the result be? If the UK votes to leave, but Scotland doesn’t, Clarke says, ‘the pressure for a second Scottish referendum on independence would be unstoppable.’ Even worse, he reckons, if a similar situation emerges in Wales, ‘it will push the issue of Welsh independence right up the agenda’. On the other hand if the result is decisive, says Clarke, it may settle the question for a long time to come.

The final word goes to David Cowling, who takes a less optimistic view. ‘What is the evidence that those defeated in the Scottish referendum have given up? None whatsoever. The idea that this referendum will solve this question of Europe is absurd. We had a decisive referendum in 1975, with a two thirds majority. Did it solve anything? Within two years Labour was having a civil war about Europe. The people who are engaged with these big issues are passionate about them. So will the ‘misinformed’ vote of the majority stop them? Of course not!’

POSTSCRIPT

Since writing this article, media attention around the referendum has been growing steadily, and prominent political figures have come out in support of the ‘Leave’ campaign. Among these figures is Boris Johnson, whose position has attracted considerable media attention.

Says David Cowling, ‘The significance of Boris Johnson’s intervention on behalf of the Leave campaign is that he attracts support from outside his own Conservative party. Lots of people yearn to be told what to do in the referendum and look to authority figures to assist them in their decision. The big unknown is whether they continue to outsource their decision the closer they approach polling day and the importance of what is at stake becomes clearer.’

‘The impact of Boris Johnson’s decision to campaign for the UK to Leave the EU is overstated,’ says Charles Clarke. ‘Most voters, including Conservative supporters who in general like Boris, understand very well that in this case his decision is driven entirely by his personal ambition and not at all by rational assessment of the important issues at stake for the nation. I am confident that people decide how to vote on the basis of assessing the interests of the country as a whole.’

JOIN IN THE DEBATE:

#KingsDebate

AN AMERICAN IN THE HEART OF EUROPE

Kayvan Hazemi Jebelli (Kay) is a lawyer at Hogan Lovells in Brussels, Belgium and one of King’s International Alumni Leaders.

Why did you decide to study in the UK, and why did you choose King’s?

I did an LLM in competition law, 2008-2009, because I knew I wanted to specialise and thought the best way to launch my career would be with a strong academic foundation. King’s has an amazing reputation, and for good reason. Not only did King’s have too many competition law courses for me to choose from, but our lessons were supplemented by visiting lecturers from the highest levels of government and private practice. I enjoyed it so much that I stayed an extra year as a research assistant.

That all sounds very serious, did you still have fun?

I did! I tried to make the most of it, and threw myself into student groups. I remember awkwardly auditioning for a production of ‘The Visit’, by Friedrich Dürrenmat — I didn’t get called back. But I did get involved with the Postgraduate Law Society. We still have reunions every once in a while and I love going to a new city and meeting up with friends from my student days. We were a very international group.

How did you end up in Brussels?

I came here for the first time for an interview, got the job and have lived here ever since. I have considered moving back to London or to California, where I grew up, but this is the place to be for what I want to do. I’ve got such a strong network of friends here, it would be very hard to leave now.

Is there a strong King’s alumni community in Belgium?

There is. There are so many alumni who studied politics, social science or law who are working here in or around the EU institutions, it’s incredible. I’ve been involved with King’s alumni in Belgium, and just last year we launched a new European & Competition Law Speakers series of events where we give a platform for alumni and professionals to share their experience and knowledge. It’s great to be able to tap into that and celebrate the King’s connection.

How would you advise alumni to get involved?

Contact your local alumni representative and get involved. Tools like Facebook and LinkedIn are great. It takes a bit of effort at first, but once the ball gets rolling you’ll realise that there were a lot of people just waiting for someone like you to take the initiative. Big annual events, like Duel Day and Alumni Weekend, are a great opportunity to start bringing people together.



“I’m impressed by the resilience of my fellow *Bruxellois*. We’ve countered hatred with love, solidarity and level headed introspection. Brussels’ *joie de vivre* lives on”

KAY HAZEMI JEBELLI

Stay connected to King’s through your global alumni network.

FIND US ON SOCIAL MEDIA:

 [facebook.com/kclalumni](https://www.facebook.com/kclalumni)

 [alumni.kcl.ac.uk/LinkedIn](https://www.linkedin.com/company/kclalumni)



FOLLOWING THE EU DEBATE?

Watch out for an invitation to a special alumni event to coincide with the EU referendum.



The Policy Institute at King's



GOING FOR GOLD

This year, King's students and alumni have plenty of reason to hope for great results at the Olympics with an impressive King's line up primed for the starting blocks.

KATHERINE GRAINGER

Rowing, 5th Olympics

(PhD Law, 2013)

Set to compete in her record fifth Olympics, Katherine Grainger is searching for another medal to add to the three silvers she won in Sydney, Athens and Beijing and the gold won at London 2012.

Last May, Katherine competed in the European Championships in Poznan, Poland, taking home a bronze medal in the double sculls alongside new rowing partner Vicky Thornley. The pair then went on to win bronze at the World Cup II in Italy before qualifying for Rio 2016 at the World Rowing Championships in France.

'I took two years away from rowing after the London Olympics but then the lure of competing in another Olympic Games was too strong to resist. Last summer we managed to qualify the boat for the Olympics and now all sights are firmly set on Rio. I'm delighted to be one of a group of King's alumni competing for Great Britain and hope the whole King's community will be cheering us on in August.'

“I'm delighted to be one of a group of King's alumni competing for Great Britain and hope the whole King's community will be cheering us on in August”

KATHERINE GRAINGER

LIZ SAUL

Paracyclist, Track and Road, 1st Olympics

(MA Disasters Adaptation and Development, 2012)

Paracyclist and King's alumna Liz Saul experienced a short, sharp rise through her sport and is now ranked as one of the UK's top competitors. She is now working hard towards qualification for Rio. Back in 2012, Liz was busy completing her MA in Disasters Adaptation and Development while enjoying the excitement of the London games as a spectator. Little did she know she would potentially be competing in four years' time.

Liz originally took up cycling for her university commute, but after participating in 'Ride to Rio' she made her way through the talent identification programme, progressing to the Paralympic Development Squad.

A broken collarbone in October 2015 posed an additional challenge to Liz's Olympic preparations, but she threw herself into training. Although final Paralympic squads won't be announced until June, Liz is hoping to qualify and enjoying every experience along the way.

DINA ASHER-SMITH

Sprinter 100m & 200m, 1st Olympics

(History)

One of team GB's strongest hopes for a medal on the track, Dina Asher-Smith arrived at King's as World Junior 100m Champion, and since then the second year History student has gone from strength to strength. She is now the double British champion and 100m national record holder.

Dina is also a strong challenger in the 200m, pushing 2012 Olympic Champion Allyson Felix hard at the Sainsbury's Birmingham Grand Prix.

As Britain's fastest woman and British record holder, Dina looks set for an action packed 2016 and an exciting Olympics.

LAVIAI NIELSEN

Sprinter 400m, 1st Olympics

(Geography)

Since arriving at King's, second year Geography student and 400m sprinter Laviai Nielsen has made rapid progress, coming through the King's Performance programme under the supervision of Performance Coach Edward Young. Laviai undertakes all of her strength and conditioning coaching at King's and is seeing great results, reducing her personal best in the 400m by over 1.5s.

Laviai became the 2015 400m European Junior Champion before adding a second gold medal in the final leg of a victorious 4x400m relay team just two days later, becoming the fastest athlete under 20 in the world.

King's Performance Coach Edward Young says, 'I have been extremely impressed by her commitment to training but moreover her interest to learn. I truly believe she is destined for greatness.'

SHONA RICHARDS

400m Hurdles, 1st Olympics

(Global Health and Medicine)

BSc Global Health student Shona Richards arrived at King's in 2015 as a rising sprint talent. She had an already impressive CV with two world junior championship silver medals and a British junior record.

Shona produced an outstanding performance in the final of the 400m hurdles to take a silver medal in a record time of 56.16s, before adding a team silver medal in the 4x400m relay final.

In early 2015, Shona suffered a broken collarbone during training, but returned to competition in mid-May 2015, competing at the European Under-23 Championships in Estonia and recording a personal best of 56.05s.



Dina Asher-Smith



Laviai Nielsen



Liz Saul



Shona Richards



Katherine Grainger

BEHIND THE SCENES

Drug Control and Olympic Legacy

King's will also play an important role in Rio behind the scenes.

Building on the legacy of London 2012 when Professor David Cowan's team operated a 24-hour drug testing laboratory, King's role in 2016 will be no less active. The team will be led by Professor Cowan again, working in partnership with the Universidade Federal do Rio de Janeiro (UFRJ).

Scientists from the Brazilian Doping Control Laboratory (LBDC) will visit King's to participate in training, and through collaborative research projects, King's and UFRJ will develop state of the art techniques to detect the newest protein-based prohibited substances. Since its establishment in 1978, the King's Drug Control Centre has had to react to the ever changing presence of illegal substances to stay one step ahead of drugs cheats.

The partnership with UFRJ has also opened up some less obvious opportunities for King's students and staff, with the establishment of a study abroad agreement. Not only that, but strong connections between the Drug Control Centre and the LBDC are expected to generate further research collaborations and the founding of joint programmes in the future. One thing's for sure, 2016 is shaping up to be a year when King's alumni will achieve great things both on and off the sporting field.

FIND OUT MORE ABOUT THE DRUG CONTROL CENTRE AT:

kcl.ac.uk/ism/research/divisions/aes/research/drugcontrol

Each month we'll ask King's Alumni and entrepreneurs to share some words of advice and to expand on their own experiences.

INNOVATION & ENTREPRENEURSHIP

at the core of the pioneering new King's Business School

King's College London is redefining the provision of business education. Launching in September 2016, King's Business School is being established in response to challenges posed by changing career patterns, digital technology and globalisation. King's Business School represents an exciting journey for King's, as it uses the university's existing academic strengths to address the challenges of today's corporate world. The Business School will capitalise on King's location in the centre one of the world's great international cities and financial centres.

Research and teaching will focus on three thematic areas. The first of these is the human

mind; in collaboration with the Institute of Psychiatry, Psychology and Neuroscience, the Business School will look at how corporate cultures can use psychology, neuroscience and behavioural economics to understand decision-making theory. The second, Risk, Regulation and Governance, will examine globalised and supranational standards on corporate governance in the private and public sectors. The third will focus on Digital Business, including the changes which have been triggered by the shift from a transaction culture to an online environment.

King's is engaged in a major project to embed entrepreneurship and innovation as one of its three pillars, alongside teaching and research. Entrepreneurship will be placed at the heart of the School, helping King's to identify, nurture and develop the entrepreneurs of tomorrow within our student body, and provide them with the professional support, financial resources, and bespoke mentoring to complement their classroom-based learning. The School will also prioritise developing existing entrepreneurial initiatives, including the King's Business Club, which was voted Student Enterprise Society of the Year in 2014.

So what does this mean for our King's community? We asked King's alumni and student entrepreneurs to share some words of advice and to expand on their own experiences.

The School aims to recruit 160 faculty members and 3,000 students by 2020 to teach and study a variety of undergraduate and postgraduate courses, including International Business, Business Management, Economics, Management with a Modern Language, or with Psychology, Law or Economics.

New Masters programmes will include Technology and Enterprise, Entrepreneurship, Investment and Trading, Management Education and International Marketing. Executive qualifications will be offered across Defence, Culture, Education, Healthcare and Law.



CHRISTIAN GLADWELL
Client President, P&G North America, Garat
History, 1996

What advice have you carried with you throughout your career?

Reach for the stars, you might just make the tree tops. I was lucky enough to hear those words from a teacher of mine when I was about 11. He was absolutely right and I've tried to push myself by living to that ideal. It's important to counter-balance that view with a pretty brutal assessment of where you are as an individual in order to keep improving and therefore resetting the bar. The best person to do that is oneself.

What advice would you give to your fellow alumni considering a career change?

What's stopping you? Most people won't take the leap so you must start with that level of commitment. Do your research, start with Google, know the direction you want to head in and map out that journey as best you can. However, be prepared to take risks don't look for perfection in a business plan or financial projection; it doesn't exist.

You're a history graduate. How did your studies at King's prepare you for the business world?

The study of past events is the only way to shape the future; history is to business what playing the piano is to music: the best grounding.

What is the philosophy you follow in order to focus on innovation?

Read history books. From the Roman Empire to the modern age, the only thing we can be certain of is change, therefore you have two choices: focus on innovation or have innovation focus on you.

Who are your mentors?

I'm always on the look out to learn from all sorts of folks. I've been a mentor for organisations such as the Marketing Society and sometimes one learns from the people one is supposed to be mentoring!

CONTINUES OVER →



MARGO MARRONE
 Founder of The Organic Pharmacy
 Pharmacy, 1997

You made quite a dramatic career change, from working as a pharmacist to starting your own business. What challenges did you face in taking that entrepreneurial leap?

Fear and scepticism were the biggest challenges. Fear on my part: what if I fail, what if no one likes it, what if it's not successful, what if I lose everything? Scepticism from others. Moving from a traditional career where security is guaranteed to a high-risk, unknown path is very hard, but having a strong belief in what you are doing along with the knowledge that hard work and perseverance make your vision come true are the cornerstones of success.

The Organic Pharmacy expanded rapidly within its first year. What would you have done differently in those early stages?

Growing too fast and expanding internationally too soon comes with major problems, such as controlling your brand and ensuring international distributors follow the brand guidelines and overall image. It became a real struggle. My advice would be take it slow, but if you do get a great international offer, make sure you visit them in their local market.

What advice would you give to King's alumni considering starting their own business?

Be truly passionate about your business, make a business plan, make sure you have enough money to keep the business going for a year, do your market research so you know exactly where, how and to whom you want to market your products. Be ready to think like an entrepreneur. This generally means: how do I solve the problem? Or getting past 20 people who say 'no' or block your progress until you find the solution.

How did your time at King's prepare you for the business world?

The pharmacy degree I did had a specific module that looked at different careers in pharmacy, but I do wish that there was a module like the one King's offers now, that would have been so helpful.

If you were a King's student today and looking to start a business, what would you want to learn from the university first?

Ideally I would want to know how to do market research, how to write a business plan, how to borrow money or find the money for my investment, and how to market my business.

What is the philosophy you follow in order to focus on innovation?

I love innovation, so for me it is to look at how things can be better: how can I use the ingredients in nature to be better and to create a better product, treatment and experience? How the customer feels is key, so I want everything to be results driven.



JOSE MORA & ANDREA ORRU
 Founders and developers of Roomor
 MSc International Management, 2015 (Mora),
 MSc Intelligent Systems, 2015 (Orru)

Roomor operates as both a customer app and a business-to-business tool, addressing a gap in the market for a completely automated rental property platform. Allowing users to find their ideal properties and giving agencies access to reach customers, Jose and Andrea began working on the business in September 2015 and have made incredibly rapid progress, securing investment and forming crucial relationships with property agencies.

How has your time at King's prepared you for the business world?

The access to business clubs and events has provided unique opportunities. The people we have met (and continue to meet) and the connections we have made through being part of King's Enterprise Incubate has been invaluable. We have also benefitted from the international profile of King's, meeting people from so many different backgrounds and nationalities.

Innovation: what does it mean to you?

When people talk about innovation, they are often referring purely to scientific or technological innovation, but we believe you can innovate with business and with services and that this can be beneficial to society.

What is the philosophy you follow in order to focus on innovation?

Don't get stuck. We try not to get too focused on the smaller details, instead we constantly try to keep moving forward. The key to this is self-awareness. We continually ask ourselves, 'Are we making progress?'

Are you an entrepreneur? Do you have advice for other King's graduates looking to start a business?

LET US KNOW ONLINE:

[in alumni.kcl.ac.uk/LinkedIn](https://in.alumni.kcl.ac.uk/LinkedIn)

THE DIET MYTH

Words by **Tim Spector**

We have been ignoring a powerful, forgotten organ of our bodies. This is the part of our lower gut weighing 1.8kg and containing 100 trillion microbes that live on high fibre food. These break down and process food, producing the chemicals that keep us healthy.

We all possess a unique set of microbes, vastly outnumbering our cells and genes. Cutting-edge research now allows us to see how these microbes can help to keep us slim, avoid heart attacks or allergies, and even reduce a hangover.

We asked Professor Tim Spector to share nutrition advice inspired by his research into microbes, genetics and diet, as he exposes the shortcomings of many fad diets and the prevalence of pseudo-science surrounding nutrition.



TOP TIPS

How to improve your gut microbes

The good news is that, unlike your genes, it is possible to reboot your gut and increase microbe diversity.

- 1 Avoid processed foods and those with too much sugar, sweetener or fruit juices.
- 2 Feed your microbes by increasing the fibre content of your diet.
- 3 Microbes love artichoke, leeks, celery, chicory, onions and garlic. After an illness, course of antibiotics or fasting try to consume these prebiotics regularly.
- 4 Include fresh foods and lots nuts, cheese, yoghurt and extra-virgin olive oil in your diet.
- 5 Give your microbes a holiday by fasting every now and then, even if just for 16 hours.
- 6 Aim to eat a variety of 20 ingredients every week, experiment to find the ones that best suit you and your microbes.
- 7 Coffee and dark chocolate (in moderation) are good for your microbes and overall health.
- 8 Avoid vitamin supplements — they don't work and can be harmful. Concentrate on eating real food, and your microbes will do the rest.
- 9 Experiment with different foods to find the ones that best suit you and your microbes.
- 10 Your gut needs fertiliser, experimentation, nutrients, the avoidance of toxins (junk food) and, above all, diversity.
- 11 Test your own gut microbes (via britishgut.org) to see how they can change on different diets after only a few days.

And if you do nothing else, simply increase the quantity and variety of the fruit and vegetables you eat.

Tim Spector is a Professor of Genetics at King's College London and a Consultant Physician at Guy's and St Thomas' Hospital London. His book *The Diet Myth: The Real Science Behind What We Eat* is published by W&N.

KING'S ROMANCE, WARSAW WEDDING

Jack Colman & Marta Bujwicka-Colman

With mutual interests in sports, travel, outdoor pursuits and eating trifle, Jack Colman (*Law, 2009*) and Marta Bujwicka-Colman (*Modern Foreign Languages with Education, 2009*) met during their first year at King's and married in 2012. They moved away from city life in 2013, relocating to the Polish countryside, where they live with their two dogs.

MARTA: We met at the university Sport's Night — Jack was on the football team, and I was in the ULU Dancesport Society. I spotted Jack but it wasn't until we were about to leave that he asked me to dance.

JACK: I knew there was a spark right way. Marta only took six months to convince.

MARTA: I had so many things going on that I didn't have much time to think about boys. By coincidence, we both spent the summer in Spain and when we returned to London we finally went on a date. We spent all afternoon in Hyde Park, then stopped at a bookshop in Soho that I absolutely loved.

There are so many places that hold precious memories for us at King's, especially the Maughan Library, where we seemed to live during the exam season.

JACK: We had a lot of work to catch up on during exams, so we used to get up early and walk along the river to the library, often making the return journey after midnight. We seemed to have the whole city to ourselves.

MARTA: Jack's proposal was incredibly romantic; he surprised me on our anniversary with dinner and a midnight walk along the Thames. We then had a traditional two-day Polish wedding near Warsaw, with family and friends from 15 different countries.

JACK: A lot of King's friends flew over to join us. We returned to London and worked in the City for two years, but we hated how little we saw of each other, so now we live in the forest in Poland. Marta has set up her own wellness company, and I've been fortunate enough to have my first novel, *The Rule*, published. It's important to

“ We used to get up early and walk along the river to the Maughan Library, often making the return journey after midnight ”

JACK COLMAN



support your partner as they pursue their dreams, and if you have joint goals then so much the better. At the same time, I think it's good to reminisce, so you never lose sight of why you're together.

MARTA: I agree with Jack about the goals and dreams — but you should also have fun together. I think Jack and I have plenty of that.

FROM GEOGRAPHERS TO ENTREPRENEURS

Alice Holden & Fleurette Mulcahy

A King's entrepreneurial success story, luxury lingerie business Attollo was founded by Alice Holden (*Geography, 2014*) and Fleurette Mulcahy (*Geography, 2014*) while they were still studying. We spoke to them about how their student friendship has developed into a successful business relationship the day after they secured investment from two new investors — one of whom is also a King's alumna.

ALICE: We first met each other on Facebook. I can't remember who sent the first message, but we were both part of a 'Going to King's' Facebook group. When we arrived at our first lecture, we recognised each other.

FLEURETTE: We took part in a Geography treasure hunt, which actually turned out to be a five hour trek around central London...

ALICE: We were the only ones who took it seriously — we wanted to win!

FLEURETTE: We're both of the mind-set that if you're going to do something, do it properly.

ALICE: So we bonded over our competitive spirit and determination.

FLEURETTE: But we also bonded over bras! Within the first few weeks of meeting, we were having a coffee, discussing what we love to wear and what we get frustrated about when we're shopping.

ALICE: We realised we had the shared experience of how difficult it can be finding comfortable, attractive underwear to fit more obscure sizes.

FLEURETTE: Our light bulb moment — when we realised we wanted to turn our passion into a business — came at the end of our second year. We had just handed in an essay and were sitting in the Waterfront Bar. We looked at each other and just said: 'let's do something about this'.

ALICE: The summer between our second and third years was

spent planning. I was at home in Sussex and Fleurette was in London, but we were both researching and sharing ideas. Attollo means 'I lift up, I raise' and that's the philosophy behind everything we do.

HOW KING'S NURTURED OUR TALENT

ALICE: We've had so many great experiences through King's, such as winning the best pitch at the Lion's Den Challenge and meeting inspirational figures at King's Enterprise Connect. If we hadn't taken part in the King's Enterprise Business Accelerator weekend, we would never have secured our first investment.

FLEURETTE: We've had great support from within King's; we call Director of Partnerships and Consultancy Michael Hill-King our 'business dad' and Professor David Green, from King's Geography department has been so supportive.

ALICE: King's Enterprise gives safety and security, a platform and network from which to ask for support and to test ideas. King's encouraged our drive and our desire to succeed. It's a university with a strong sense of tradition but also a go-getting, can-do attitude.

FLEURETTE: If it wasn't for King's, Attollo wouldn't exist today.

SEND US YOUR 'WE MET AT KING'S' STORIES:

✉ alumoff@kcl.ac.uk



“ If it wasn't for King's, Attollo wouldn't exist today ”

FLEURETTE MULCAHY





William Shakespeare's will featuring his last signatures goes on show

To mark 400 years since his death, Shakespeare's will and other documents are on display at an exhibition held at King's for the first time. The exhibition entitled 'By me William Shakespeare', is currently on at the Indigo Rooms, Somerset House East Wing, until May 29 2016.



Zika virus

Women in countries affected by the Zika virus in South America have been advised against getting pregnant, as the virus is believed to be linked to birth defects. Dr Eduardo J. Gómez, International Development Institute, commented on the response of officials in the affected countries. 'I really don't think Brazil was entirely ready; they've been having problems with their public health system for a while,' he said.



The health implications of the diesel 'scandal'

Various academics in the Environmental Research Group (ERG), including Professor Frank Kelly, Dr Martin Williams, Dr Ian Mudway and Dr Gary Fuller provided comments about reports on Volkswagen, air pollution in London and pollution masks.



King's rises 13 places in THE World Rankings

King's College London now ranks 27th in the world and 7th in the UK, having risen 13 places in the Times Higher Education (THE) World University Rankings 2015-16. Commenting on the rise, Professor Edward Byrne AC, President & Principal of King's, said: 'I'm delighted that King's has risen from 40th position internationally in 2014-15 to 27th position this year. This is a significant achievement and testament to the progress we continue to make towards being universally recognised as a world top 20 university.'



Test shows how old your body really is

Professor James Timmons, Medical & Molecular Genetics, who has developed a new way of testing how well, or badly, a person is ageing, said: 'There's a healthy ageing signature that's common to all our tissues, and it appears to be prognostic for a number of things including longevity and cognitive decline. It looks like from the age of 40 onwards you can use this to give guidance on how well an individual is ageing.'



Arm mole count 'predicts skin cancer risk'

According to research by Simone Ribero, Twin Research & Genetic Epidemiology, having more than 11 moles on one arm indicates a higher-than-average risk of skin cancer or melanoma. Ribero said: 'The findings could have a significant impact for primary care, allowing GPs to more accurately estimate the total number of moles in a patient extremely quickly via an easily accessible body part. This would mean that more patients at risk of melanoma can be identified and monitored.'

MAKING HEADLINES

King's has been making headlines around the world, from experts offering commentary on world events, to the life-changing impact of King's research. We've chosen a small selection of the stories you may have missed.



Paris attacks

Many King's academics offered commentary across a wide range of international media outlets in the aftermath of terror attacks in Paris. In one such example, Dr Reinoud Leenders, Professor of International Relations and Middle East studies in the Department of War Studies, commented on USA Today in response to reports that one of the terrorist attackers in Paris may have been a Syrian asylum seeker and the detrimental effect this could have on the wider refugee debate.



Fit legs equals fit brain, study suggests

Dr Claire Steves, Twin Research & Genetic Epidemiology, has discovered that older women who have strong legs are likely to fare better when it comes to ageing of the brain. Steves said: 'When it came to cognitive ageing, leg strength was the strongest factor that had an impact in our study. Other factors such as heart health were also important, but the link with leg strength remained even after we accounted for these.'



Dina Asher-Smith becomes the fastest teenager in history after finishing fifth in the World Championships final

King's History student, Dina Asher-Smith, broke a world record at the World Championships to become the fastest teenager in history despite coming fifth in the 200m final. Dina said: 'I was thinking I know I'm really trying my best but they're already gone so what on earth is the time going to be. So when I crossed the line I was just open mouthed because 21.6 one and two is absolutely amazing and for all the medals sub-22 I'm flabbergasted, it's absolutely amazing.'



UK scientists get green light to genetically modify human embryos

Scientists from the Francis Crick Institute have been given permission to begin research altering the DNA of embryos in the first seven days after fertilisation. Professor Peter Braude, Women's Health, commented on the announcement in the Independent. 'I am delighted to hear that the HFEA have had the good sense to approve this important project. Gene editing tools will allow fresh insights into the basic genetic mechanisms that control cell allocation in the early embryo,' he said.



Prince William speaks out against wildlife trade

The Duke of Edinburgh discussed the threat to endangered species posed by the trade in illegal wildlife products on the Chinese programme 'Let's Talk'. The show was recorded in the Maughan Library at King's College London, in front of an audience of around 80 students and invited guests and was broadcast in October to around 100 million people in China.



King's named one of world's most international universities

King's has been placed 20th in the Times Higher Education Most International Universities 2016 Rankings. Dr Joanna Newman, King's Vice-Principal (International) said: 'This result is testament to how, at King's, our cross-boundary, multidisciplinary collaboration with the best international partners is helping us to find answers to the global questions in health, sustainability, culture and identity, and defence and security.'



Big oil faces shrinking prospects

Professor Nick Butler of the Policy Institute comments on Shell's decision to abandon one of the most expensive oil wells ever drilled, Burger J prospect, along with its entire Arctic exploration campaign. Professor Butler said: 'Shell is reckoned to have spent about \$7bn on the exploration effort; some estimates put the figure even higher. But its balance sheet is strong enough to absorb the loss.'



“KNOWLEDGE IS THE WING WHEREWITH WE FLY”

Professor Russell Goulbourne, Dean of King's faculty of Arts and Humanities, discusses the development of this dynamic and outward looking department, demonstrated through the collaboration between King's and the Shakespeare400 consortium in recognition of the 400th anniversary of the Bard's death.

Now ranked 15th in the world and 4th in the UK according to the 2015/16 THE World University Rankings, the faculty of Arts and Humanities is enjoying great success. This success reflects efforts in recent years to integrate teaching and research, with each reinforcing the other, an approach that underlines the faculty's view of the public value of a humanities degree.

RESEARCH BASED EDUCATION

'Students are joining a community of scholars and becoming researchers in their own right,' says Professor Russell Goulbourne, Dean of the faculty. 'Given this research-based education, we are not limiting students to particular career paths,

but preparing them for a whole range of different professions.' Professor Goulbourne, who is now in his third year as Dean, credits his predecessors with having had the foresight to develop new ways of teaching and learning. 'Considering the economic pressures that the humanities are under globally,' he observes, 'one response is to become embattled and defensive. That has not been the approach at King's at all; rather, we are a very open faculty, and my colleagues and I enjoy working across disciplinary and institutional boundaries.'

COLLABORATING WITH SHAKESPEARE

An exciting event that highlights the innovative work of the faculty of Arts and Humanities is Shakespeare400,

an anniversary celebration and collaboration between King's and 24 partners in the Shakespeare400 consortium. Professor Goulbourne's colleague, Professor Gordon McMullan, Director of the London Shakespeare Centre, outlines the value of Shakespeare400 in connecting King's to the wider community:

'Our festival — "What you Will" — complements the astonishing array of activities taking place under the auspices of Shakespeare400 and offers a sample of the Shakespeare-related research activities being carried out at King's, of the partnerships we share with London's cultural and creative organisation, and of the innovative thinking that characterises research and teaching at King's.'

Partners include the Globe, the National Archives and the National Theatre and the programme connects with other universities both in the UK and overseas, drawing upon the synergies between Shakespearean research and science, technology, music and psychology with an impressive range of guest speakers and performers. For Professor Goulbourne, this is typical of the faculty's ethos:

'We are an outward-looking faculty with an interdisciplinary approach to research and teaching. The involvement of King's with Shakespeare400 is a perfect example of this in practice; a cross-university project and also a collaboration with external organisations,

drawing on the knowledge and research expertise of academic staff in Arts and Humanities.'

LEADING IN LIBERAL ARTS

Another example of innovation within the faculty is the Liberal Arts programme. The programme only saw its first cohort of graduates in 2015, but is already the fourth highest recruiting course in the faculty. The sector-leading programme offers a wide choice of modules in the first year that introduce students to different disciplinary perspectives, allowing them to choose which they would like to major in for the remaining two.

The new Liberal Arts graduates will join a community of alumni who have a key role to play in the life of the faculty, according to Professor Goulbourne: 'Our alumni are a vital element in connecting us to the world outside the institution and we encourage them to stay in touch and get involved. We particularly want them to return and share with our current students the knowledge they've gained through their careers since leaving King's.'



“We are a very open faculty, and my colleagues and I enjoy working across disciplinary and institutional boundaries”

PROFESSOR RUSSELL GOULBOURNE

SEND US YOUR MEMORIES FROM YOUR TIME AS AN ARTS & HUMANITIES STUDENT:

✉ alumoff@kcl.ac.uk

EVENTS

Shakespeare400 Events

By me William Shakespeare

Indigo Rooms, Somerset House East Wing

Until 29 May

An exhibition, co-curated by The National Archives and the London Shakespeare Centre at King's, exploring what Shakespeare's will and other unique documents tell us about Shakespeare.

'The very age and body of the time': Shakespeare's world

Weston Room, Maughan Library, Chancery Lane

Thursday 16 June - Saturday 24 September 2016

An exhibition of archive material looking at different aspects of Shakespeare's world, including Shakespeare's London, the New World, Medicine and Religion.

1616 - The Secrets and Passions of William Shakespeare

Greenwood Theatre, Guy's Campus

Thursday 21 - Friday 22 July 2016

Transatlantyk2 present their acclaimed new one-man play, which dramatically recreates Shakespeare's life, loves and works.

World Shakespeare Congress: Creating and Re-creating Shakespeare

Stratford-upon-Avon and London

Sunday 31 July - Saturday 6 August

The 2016 World Shakespeare Congress — four hundred years after the playwright's death — will celebrate Shakespeare's memory and the global cultural legacy of his works.

2016 WORLD SHAKESPEARE CONGRESS

Alumni Weekend

Don't forget that the 13th annual Alumni Weekend takes place 10-12 June and that this year's theme ties in with the Shakespeare400 celebrations. Expect a fascinating range of talks, campus tours, reunions and interactive sessions. Visit alumni.kcl.ac.uk/alumniweekend for more details.

More events are being added throughout the year, so visit the website for the latest programme details.

📍 kcl.ac.uk/shakespeare

NEW APPOINTMENTS & COMMENDATIONS

FOR MORE DETAILS VISIT US AT:

alumni.kcl.ac.uk/alumni-community

NEW APPOINTMENTS AT KING'S



Charles Clarke

Former Home Secretary Charles Clarke was appointed Visiting Professor in July, taking up his position in September. Working with the Policy Institute at King's, his focus will be on exploring innovative ways of delivering public services that citizens want.

Professor Frans Berkhout

Professor Frans Berkhout was appointed the new Executive Dean of the Faculty of Social Science & Public Policy in May 2015. He was previously Professor of Environment, Society and Climate in the Department of Geography at King's.

Professor Kerry Brown

In July 2015, Professor Kerry Brown was appointed as the new Director of Lau China Institute. Professor Brown was previously Director of the China Studies Centre at the University of Sydney and Professor of Chinese Politics. He was also a member of the British Foreign Office and Head of the Asia programme at Chatham House. Professor Brown will be responsible for directing the team of academics, staff and students.

Ed Balls

Ed Balls, former Shadow Chancellor of the Exchequer, Secretary of State for Children, Schools and Families has been appointed Visiting Professor to the Policy Institute. Mr Balls

brings unrivalled experience and knowledge of government, economics and politics. He is part of the team teaching the new postgraduate module on 'The Treasury and Economic History since 1945' run in partnership with HM Treasury.

Sir Christopher Geidt

In June 2015 it was announced that Sir Christopher Geidt will succeed the Duke of Wellington as King's Chairman. Sir Christopher, as Chairman of the Governing Council, will lead the governance of the university from August 2016. Sir Christopher is an alumnus and Fellow of King's, having studied War Studies at the university, later studying International Relations at Trinity Hall, Cambridge.

Dame Margaret Hodge

The Rt Hon Dame Margaret Hodge has been appointed Visiting Professor at King's, joining a diverse and growing group of Visiting Professors. Dame Margaret will work with the Policy Institute at King's on a range of activities, including undertaking research for her forthcoming book on the Public Accounts Committee.

Sir Iain Lobban

Former Director of GCHQ, Sir Iain Lobban, was appointed Visiting Professor at King's in September 2015. Sir Iain's leadership at GCHQ spanned contexts as varied as counter terrorism, cyber defence, and the prevention and detection of serious crime. He was a member of GCHQ's Board for 13 years, with almost half of that period as its Chair. Sir Iain's unrivalled knowledge of security, intelligence and defence and other global issues will benefit King's College London, its students and the wider government policy and machinery field.

NOTABLE COMMENDATIONS FOR KING'S STUDENTS, STAFF AND ALUMNI



Joseph Fort

Performer and music scholar Joseph Fort has joined King's College London as the new College Organist and Director of the Chapel Choir and Lecturer in Music. He will be responsible for all the music in the chapel at the Strand. The choir of King's College London is one of the leading university choirs in England, consisting of up to thirty choral scholars and two organ scholars. The appointment follows the sudden death of David Trendell last year after 22 years in the post.

Professor Sir Robert Lechler

Professor Sir Robert Lechler became the new President of the Academy of Medical Sciences in December 2015. He was appointed to the role following the departure of Professor Sir John Tooke, who left office after four years in the position. Professor Lechler will work with the Fellowship of the Academy and staff to continue to build its national prominence and influence.



Dr Andrew Blick

Dr Andrew Blick, an historian from the Institute of Contemporary British History at King's has been appointed expert adviser to a new panel on devolution and the constitutional future of the UK. The new panel, under the chairmanship of Lord Kerslake, former Head of the Home Civil Service, was set up by the All-Party Parliamentary Group (APPG) on Reform, Decentralisation and Devolution in the UK.

Professor Edward Byrne

In October, King's President & Principal, Professor Edward Byrne, was appointed to a new Advisory Council within the China-Britain Business Council (CBBC). Made up of some of Britain's leading business people with important China connections, Professor Byrne will join the 30-strong group of chairmen and CEOs of FTSE-100 companies and senior partners from the UK's largest professional services firms. The new initiative has been implemented in order to assist CBBC members in both the UK and China and drive forward collective China business efforts.



Psychology & Neuroscience
of Mental Health MSc

KING'S
College
LONDON

**PSYCHOLOGY.
NEUROSCIENCE.
MENTAL HEALTH.
MIND-OPENING IDEAS.**

**100%
ONLINE.**

A comprehensive and integrated exploration of our current understanding of the psychological and neuroscientific basis of mental health.

- Benefit from the world-leading research and clinical practice conducted within the world-renowned Institute of Psychiatry, Psychology and Neuroscience.
- The programme is taught 100% online, allowing you to study with King's College London wherever you are.
- With six entry points throughout the year, this flexible schedule allows you to fit studies around work and other commitments.

Call **01279 623678** to speak to an enrolment advisor or email onlineenrolmentservice@kcl.ac.uk

International Corporate
& Commercial Law LLM

KING'S
College
LONDON

**CORPORATE &
COMMERCIAL LAW.
THE NEW
FRONTIERS.**

**100%
ONLINE.**

Develop your legal career with an online LLM from King's College London. This online qualification explores current corporate and commercial legal topics within the context of a global economy.

- Our academics provide cutting edge legal teaching in an intellectually rigorous environment.
- The programme is taught 100% online, allowing you to benefit from the world-renowned teaching of King's College London's Dickson Poon School of Law wherever you are.
- With six entry points throughout the year, this flexible schedule allows you to fit studies around work and other commitments.

Call **01279 623678** to speak to an enrolment advisor or email onlineenrolmentservice@kcl.ac.uk

ALUMNI EVENTS

King's are proud to present a diverse calendar of events for our alumni community, including annual highlight, the King's Alumni Weekend. This year, expect a Shakespearean experience as the theme for the weekend reflects King's role in the Shakespeare400 consortium.

FOR MORE DETAILS VISIT US AT:

alumni.kcl.ac.uk/events

By me William Shakespeare: A life in writing

Wednesday 3 February – Sunday 29 May 2016

This exhibition offers a once-in-a-generation opportunity to explore Shakespeare's will, alongside other unique documents that witness his life. This is the first time the will has been on public display in 40 years. The exhibition is presented as part of Shakespeare400, a consortium of leading cultural, creative and educational organisations, coordinated by King's College London, to mark the 400th anniversary of Shakespeare's death in 2016. Free to King's alumni. Visit bymewilliamshakespeare.org for more information.

John Fry Reunion Lunch

Wednesday 12 October 2016

Held in memory of the eminent GP John Fry, this annual reunion event — for alumni who graduated from Guy's between the years of 1930 and 1986 — is a wonderful opportunity to come back to Guy's Campus and reunite with classmates and friends. The reunion will begin with drinks, followed by a three-course dinner. Details will be available later in the year from the Alumni Office. Contact alumnievents@kcl.ac.uk for more details.

KCLA AGM and Dinner

Friday 4 November 2016

KCLA is the alumni association for all former students, staff and friends of King's and the institutions with which it has merged. Join us in November for the Annual General Meeting, Council elections and annual dinner. Details will be available later in the year from the Alumni Office. Email us at: alumnievents@kcl.ac.uk



Alumni Weekend

10 – 12 June 2016

The annual King's Alumni Weekend takes place 10 – 12 June. This year's theme ties in with the Shakespeare400 celebrations. Expect a wide range of events, including:

- The Principal's lunch
- Class reunions
- Departmental tours
- A wide variety of shows and performances

Visit alumni.kcl.ac.uk/alumniweekend for more information.

REUNIONS

FOR MORE INFORMATION ON ALL THE ALUMNI-LED REUNIONS TAKING PLACE, PLEASE CONTACT:

reunions@kcl.ac.uk

Reunions provide a great opportunity to catch up with fellow alumni in a friendly and informal setting. Let us know if you are planning or would like to host a reunion event.

EMAIL US AT:

reunions@kcl.ac.uk



Geography, 1956

Strand Campus (Alumni Weekend)
11 June 2016

Occurring as part of the exciting Alumni Weekend programme, Josephine Crocker has organised a reunion for all Geography graduates from 1956.

Medicine, 1982/3

Strand Campus (Alumni Weekend)
11 June 2016

Dr Helen Barlow and Dr Liam Brennan invite you to come and celebrate a reunion for all medicine graduates from KCSMD, graduating in 1982 or 1983.

English, 1986

Strand Campus (Alumni Weekend)
11 June 2016

Tying in with the overall theme of the Alumni Weekend, Nerys Pierce-Hughes invites English graduates from 1986 to join in their 30th reunion celebration.

Maths, 1966 entrants

Strand Campus (Alumni Weekend)
11 June 2016

Susan Irvine invites all graduates in mathematics who started in 1966 to celebrate the golden anniversary of their enrolment at King's College London.

Medicine, 1996

Strand Campus
27 August 2016

Celebrating 20 years since graduating, Dr Emma Raderschadt and Dr Meg Birks invite you to join them in a reunion and tour of the Strand Campus.

Medicine, 1966

The George Hotel, Stamford
23-24 September 2016

Taking place in rural Lincolnshire, Dr Stuart Taylor has organised an evening meal for medicine graduates from KCSMD in 1966 — the perfect occasion to celebrate your golden reunion!

A NOTE FROM THE KING'S COLLEGE LONDON ALUMNI ASSOCIATION (KCLA) CHAIRMAN



FOR MORE DETAILS ABOUT ALUMNI EVENTS VISIT US AT:

alumni.kcl.ac.uk/events

KCLA represents King's alumni in College affairs and aims to encourage continued alumni involvement with the university.

We host a series of annual events including: Duel Day in March; the KCLA Address in April, this year with speaker Lord Richards; the Sports dinner at the Kia Oval; Alumni Games at Honor Oak Park in October, and the dinner & AGM at the House of Lords in November. In addition, the Alumni Office organises several events, including the Alumni Weekend in June.

Sport is a vital link between past and current students so we work with King's Sport and KCLSU to support alumni activities in hockey, rugby, netball and cricket. We would like to see more alumni participating in cultural and sporting activities and appreciate your support. All alumni are welcome to attend our events and we always welcome your views on any matters involving alumni.

Professor Stephen Challacombe
(Dentistry, 1969)

ALUMNI BENEFITS & SERVICES

If you studied at King's, or at one of the institutions with which it has merged, you are entitled to many great benefits.

FOR MORE DETAILS VISIT US AT:

alumni.kcl.ac.uk/benefits

OR CALL US ON:

+44 (0)20 7848 3053

Associateship of King's College

Alumni who missed out on the Associateship of King's College (AKC) while they were students can now study for their AKC through a distance learning programme. Alumni can now participate in the three-year programme, at a cost of £500 per year.

Alumni Online

Our new-look Alumni Online website is a great way to stay in touch with King's and your friends from university. You can also register for our email newsletters, so news from King's goes directly to your inbox.

Modern language courses

King's is proud to offer a programme of part-time evening courses, and a choice of 24 different languages, through the Modern Language Centre. Alumni can save up to £138 by signing up for three terms.

Free access to JSTOR

King's offers Alumni Online members access to a huge range of online academic works and resources via our subscription to JSTOR — completely free of charge.

Use the university libraries

The university's libraries are available for alumni to use; reading in the libraries is free and you can borrow books and materials for an annual fee of £60. Download the application form from Alumni Online.

Become a mentor

Use your own experience of the working world to help guide your mentee to reach their fullest potential. Mentees can search for suitable mentors and approach you via the online platform, King's Connect.

King's email address

As a member of Alumni Online, you can set up a King's-specific email address for professional and personal use — a great way to maintain a constant email address, even if you change service providers.

Discounted theatre tickets

King's alumni now have access to a range of great theatre offers at selected theatres across the UK run by the Ambassador Theatre Group.

Keep fit at King's

King's Health and Fitness Centre offers alumni an affordable training facility conveniently located five minutes from Waterloo. Alumni receive a discounted rate. To learn more about the centre, please call +44 (0)20 7848 4650.



CLASS NOTES

To see all the latest class notes and find out which of your classmates have been performing on stage, writing books and planning reunions, visit our website:

alumni.kcl.ac.uk/classnotes

FOLLOWING YOUR PASSIONS

JERRY ASQUITH
(Dentistry, Royal Dental Hospital, 1981)

A demanding dental career has not stopped Jerry Asquith following his passion for politics.

Undeterred by mild dyspraxia, Jerry has excelled in the dental profession. Qualifying from the Royal Dental Hospital in 1981, he is now President of the King's College London Dental Alumni Association. Not only that, but he was also recently voted 'Dental Alumni of the Year', an award which recognised both his achievements in dentistry and his contribution to politics.

Following his studies at the Royal Dental Hospital, Jerry completed registrarships at the Central Middlesex and United Bath hospitals. This was followed by a move into general dental practice and a period as a full-time general practitioner in Ruislip, West London.

A long-standing involvement with the British Dental Association has allowed Jerry to combine his passions for both dentistry and politics. Joining as a student in the 1970s, Jerry progressed to become Director of the Association in 2010, and, two years later, was elected to its English and UK Councils. Over the last five years he has also served as Parliamentary Coordinator for the Federation of Local Dental Committees.

But Jerry's involvement with politics isn't confined to the world of dentistry. A lifelong Liberal Democrat, he became a party councillor for Carpenders Park Ward, Watford in 2006, even acting as advisor to Health Minister Ann Keen in 2009. His sense of giving back doesn't stop there, as Jerry has also given his time to speak about political lobbying to the King's Dental Alumni Association.

So if you're wondering how to combine a profession with what you love, Jerry Asquith's experience goes to show that you don't have to compromise your passions to find a fulfilling career.

FROM STRENGTH TO STRENGTH

NORMAN CHAMP
(War Studies, 1986)

Since studying at King's, Norman Champ has blazed an impressive trail. An expert in financial and regulatory matters, he has served as Director of Investment Management at the United States Securities and Exchange Commission (SEC), taught at Harvard, and, most recently, authored a book about his experiences.

A Fulbright scholar to King's, where he received his MA in War Studies, gave Norm the opportunity to study in London with graduates from all walks of life, an experience that he considers contributed to his early career success.

'I thoroughly enjoyed my time at King's. We had a great group of graduate students, including members of the military from several countries. Later, as the General Counsel of a US hedge fund, I spent a great deal of time working in London and my experience of living there as a student gave me a great background for navigating the city for our business.'



During his time at the SEC, Norm made significant changes to improve the capabilities and operations of the agency, while simultaneously accomplishing significant policy objectives. Under his leadership, the SEC adopted a new rule to reform money market mutual funds, helping to resolve issues identified during the financial crisis.

Above and beyond his day job, Norm has also taught Investment Management Law at Harvard Law School since 2008. He credits this with keeping his own perspective fresh and astute, 'I thoroughly enjoy teaching bright law students who want to learn about this important area. Distilling everything I know into classes for the students

makes me think carefully about why law in this area works as it does.'

Norm's book, tentatively titled 'Going Public' talks about the experience of moving from the contrasting worlds of the highly competitive hedge fund industry to government. Giving a behind-the-scenes look at a US government agency, the book illuminates a fascinating side of this world that he believes will be of widespread public interest.

OBITUARIES

MARY STARBUCK
(Medicine, King's College School of Medicine and Dentistry, 1952)

A pioneer in the male dominated world of eye surgery, Mary Starbuck was the first in her family to go to university. Standing out from her peers from an early age due to her exceptional intelligence, she went on to complete her Bachelor of Medicine (MBBS) at King's College London. Life as a junior doctor at King's College Hospital followed.

Starbuck passed her Fellowship of the Royal College of Surgeons (FRCS) exam in 1959, before taking up a consultant post in 1961 in Canterbury. There she built up the ophthalmology department, also taking on responsibility for ophthalmic departments in other local hospitals. She went on to become a Senior Fellow of the Royal College of Ophthalmic Surgeons when it formed in 1988.

After becoming involved with 'Sight by Wings', a charity which brought up-to-date ophthalmic skills to parts of Africa, Starbuck regularly carried out unpaid work. Many of the blind and partially sighted had conditions that could be easily treated with the right equipment and expertise. Starbuck performed life changing operations on the people she treated, often just operating in a tent, with instruments sterilised over a primus stove.

At different times, Starbuck served as president of the Southern Ophthalmologists and as regional representative to the Council of the Faculty of Ophthalmology and was an examiner in the Diploma of Ophthalmology of the Royal College of Surgeons from 1981 until her retirement in 1987.

After retirement, she took an Art History degree, travelled frequently in search of antiquities, art and architecture, and became a member of the Garden History Society.

REVEREND DERRICK COOLING
(Theology, 1958)

Born in the West Midlands, the Reverend Derrick Cooling was committed to his faith from an early age. So committed that he would employ methods of subterfuge in order to study Greek and Latin, to set him on the road to his vocation. The Revd Cooling would go on to join the Church in Wales and become a School Chaplain in a forces school in Germany. He later became a leading champion for women's ordination.

The Revd Cooling was inspired to take up the cause of women's ordination after meeting his wife Margaret, a Classics student with a passion for Greek, who also had a vocation to the priesthood. Following their marriage, the Revd Cooling served two curacies and returned to parish ministry in Wales. Once there, his work in support of women's ordination began in earnest, with his research and writing refuting traditional objections to women in leadership roles in the Church. After many disappointments and periods of frustration his wife, Margaret, was eventually ordained in Chelmsford in 1995, an affirmation of all he had worked to achieve.

On hearing of his death, the former Arch Bishop of Canterbury Rowan Williams wrote 'He was a really outstanding priest. I admired him immensely and he was always a challenging presence, never afraid to tell me when I was wrong, never backward in supporting generously at other times. His selfless ministry in really difficult settings was an inspiration. I am so thankful to have had the joy of working with him.'

FAITH AND PUBLIC SERVICE



PROFESSOR ANTHONY MELLOWS OBE TD BD LLD AKG FKC

With a strong sense of faith and public service, Professor Mellows held degrees in both Law and Divinity. His commitment to both the legal profession and religion were strong themes throughout his life. Professor Mellows was, at various times, the Dean of the Faculty of Law and Head of the School of Law at King's. He was also the author of the important 'Mellows Commission', where he sought to improve the establishments and structures surrounding the Archbishops of Canterbury and York.

A committed member of the Church of England, Professor Mellows was fascinated by theology. In 2014 he completed

FOR MORE DETAILS VISIT US AT:
alumni.kcl.ac.uk/obituaries

the maximum permitted six year term as Lord Prior of the Order of St John, an ancient religious military Order. As the Lord Prior, Professor Mellows was the most senior non-royal member of the Order worldwide. Following his work on the Mellows Commission, in 2003 he was appointed OBE for services to the Church of England.

Outside his academic and working commitments, Professor Mellows served as a Reserve Army Officer in the Intelligence Corps and on the general staff for nearly 15 years. He was awarded the 'Territorial Decorations' for long service as a Territorial Army Officer.

Photograph of Professor Mellows courtesy of The Order of St John

Is there anything you'd like to share with your alumni community? We'd love to hear your news and updates.

EMAIL US AT:

alumoff@kcl.ac.uk

Professor Edward Byrne RECOMMENDS



What's the music that brings back fond memories or the novel that keeps you thinking long after you've put it back on the shelf? In this new series, we ask members of the King's community to share their favourite recommendations.

To kick things off, we asked King's Principal, Professor Edward Byrne AC, for his top picks.

Favourite music?

It has to be Schubert, 'The Trout' quintet and 'Rosamunde' quartet. I'm a big fan of classical music and this is the piece that started it all. I can still remember the exact section that got me hooked.



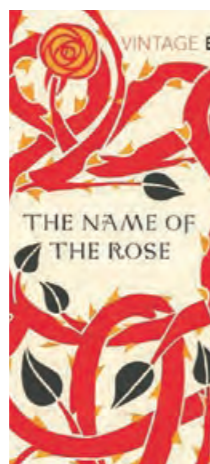
Favourite poem?

'The Duino Elegies' by Rilke. When I was an editor of a medical journal, my manager gave me a copy of the J.B. Leishman translation from the German. I was so taken with the rich symbolism and the philosophical undertones.



What's the novel that you can't stop telling people about?

'The Name of the Rose' by Umberto Eco. It's an historical murder mystery set in an Italian monastery and really sparked my interest in the history of the early Middle Ages.



Favourite place?

I first visited the Taj Mahal in the 1980s. Seeing the beauty of this magnificent building sparked a lifelong interest in India and Asia.



Treasured childhood memory?

Learning 'Kubla Khan' by Coleridge. I memorised this poem as a schoolboy and it still holds a lot of meaning for me. I can still recite it by memory to this day.



Most inspiring place in London?

I love Islington. I used to live there and it's a beautiful part of London. It's also a real melting pot, with a cross section of all London communities.



What are your favourite pieces of music, novels or films? Do any of these hold a special connection to your time at King's?

LET US KNOW ONLINE:

#ForeverKings

13TH ANNUAL

Alumni Weekend 2016

10-12 JUNE 2016

JOIN US FOR A FESTIVE CELEBRATION OF SHAKESPEARE'S LIFE, WORK AND LEGACY!

A weekend featuring inspirational talks, poetry workshops, and professional actors, as well as opportunities to reconnect with friends and classmates. Join us for the Principal's Lunch or A Midsummer's Afternoon Tea, a range of campus tours and much more.

To see the full programme of events and to book your place, please visit: alumni.kcl.ac.uk/alumniweekend

You can also email alumni@kcl.ac.uk or call +44 (0)20 7848 3053.



The background of the entire page is a bokeh effect consisting of numerous overlapping, semi-transparent golden circles of varying sizes and opacities, creating a warm, shimmering glow.

alumni.kcl.ac.uk

Email: alumoff@kcl.ac.uk
Phone: +44 (0)20 7848 3053

Fundraising & Supporter Development
King's College London
Virginia Woolf Building
22 Kingsway | London | WC2B 6LE

#ForeverKings