

Figure 6.1

Salinity Induced by Water Table (Primary Salinity shown Separately) Northern and Yorke Agricultural District

The map shows ten classes of water table induced salinity. The classes account for the degree of salinity of the landscape as a whole, and for the proportion of land affected by discrete saline seepages. Land with high to extreme primary salinity (eg. salt lakes and salt pans that pre-date European settlement) is mapped separately where possible, although it should be noted that the distinction is often unclear.

SALINITY (induced by water table)

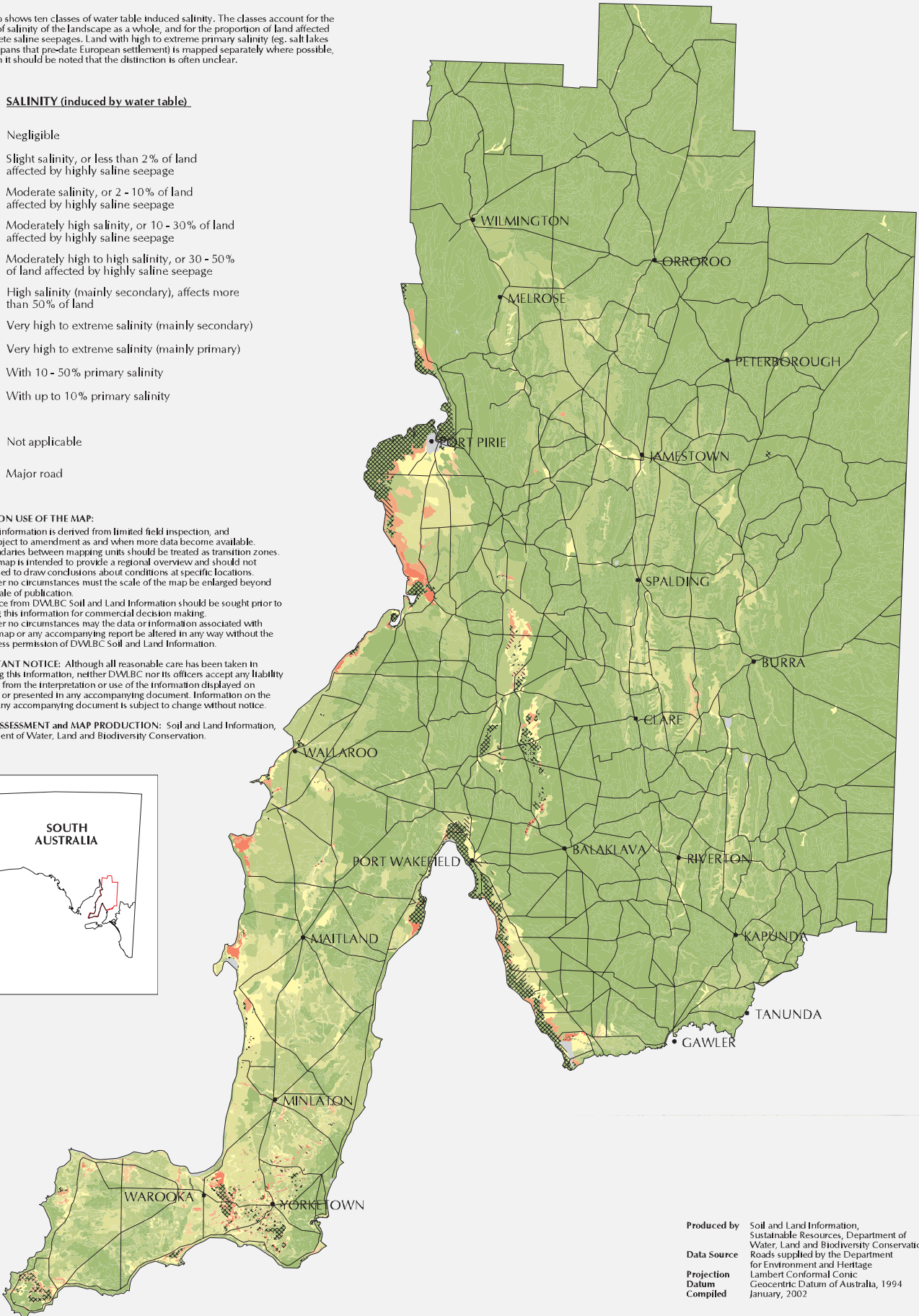
- Negligible
- Slight salinity, or less than 2% of land affected by highly saline seepage
- Moderate salinity, or 2 - 10% of land affected by highly saline seepage
- Moderately high salinity, or 10 - 30% of land affected by highly saline seepage
- Moderately high to high salinity, or 30 - 50% of land affected by highly saline seepage
- High salinity (mainly secondary), affects more than 50% of land
- Very high to extreme salinity (mainly secondary)
- Very high to extreme salinity (mainly primary)
- With 10 - 50% primary salinity
- With up to 10% primary salinity
- Not applicable
- Major road

NOTES ON USE OF THE MAP:

1. This information is derived from limited field inspection, and is subject to amendment as and when more data become available.
2. Boundaries between mapping units should be treated as transition zones.
3. The map is intended to provide a regional overview and should not be used to draw conclusions about conditions at specific locations.
4. Under no circumstances must the scale of the map be enlarged beyond its scale of publication.
5. Advice from DWLBC Soil and Land Information should be sought prior to using this information for commercial decision making.
6. Under no circumstances may the data or information associated with this map or any accompanying report be altered in any way without the express permission of DWLBC Soil and Land Information.

IMPORTANT NOTICE: Although all reasonable care has been taken in preparing this information, neither DWLBC nor its officers accept any liability resulting from the interpretation or use of the information displayed on this map or presented in any accompanying document. Information on the map or any accompanying document is subject to change without notice.

LAND ASSESSMENT and MAP PRODUCTION: Soil and Land Information, Department of Water, Land and Biodiversity Conservation.



Produced by Soil and Land Information, Sustainable Resources, Department of Water, Land and Biodiversity Conservation
Data Source Roads supplied by the Department for Environment and Heritage
Projection Lambert Conformal Conic
Datum Geocentric Datum of Australia, 1994
Compiled January, 2002

