

Figure 6.3

Dry Saline Land Northern and Yorke Agricultural District

Note: Soil salinity in dry saline land is not linked to a water table (refer to 'Salinity - induced by water table'). Land affected by highly saline 'magnesta patches' is not shown on this map (refer to 'Dry Saline Land - magnesta patches').

Classes are based on an interpretation of soil landscape map units. Many map units have components of contrasting land types, with variable subsoil salinity. Map units are classified according to the most severely affected component, provided it occupies at least 30% of the area of the unit. Land which is affected by saline water tables is rated as either low, or as for the estimated level of salinity prior to the water table rise.

SALINITY #	Indicative ECe (dS/m)*	
	SURFACE	SUBSOIL
Low	< 2	< 4
Moderately low	2 - 4	4 - 8
Moderate	4 - 8	8 - 16
Moderately high to high	> 8	> 16

Salinity classes are based on the most saline part of the upper metre of soil (usually the deep subsoil).
* ECe electrical conductivity of a saturation paste of water and soil. Values are based on estimates from EC (1:5) measurements, a conversion which usually over-estimates ECe.

Not applicable

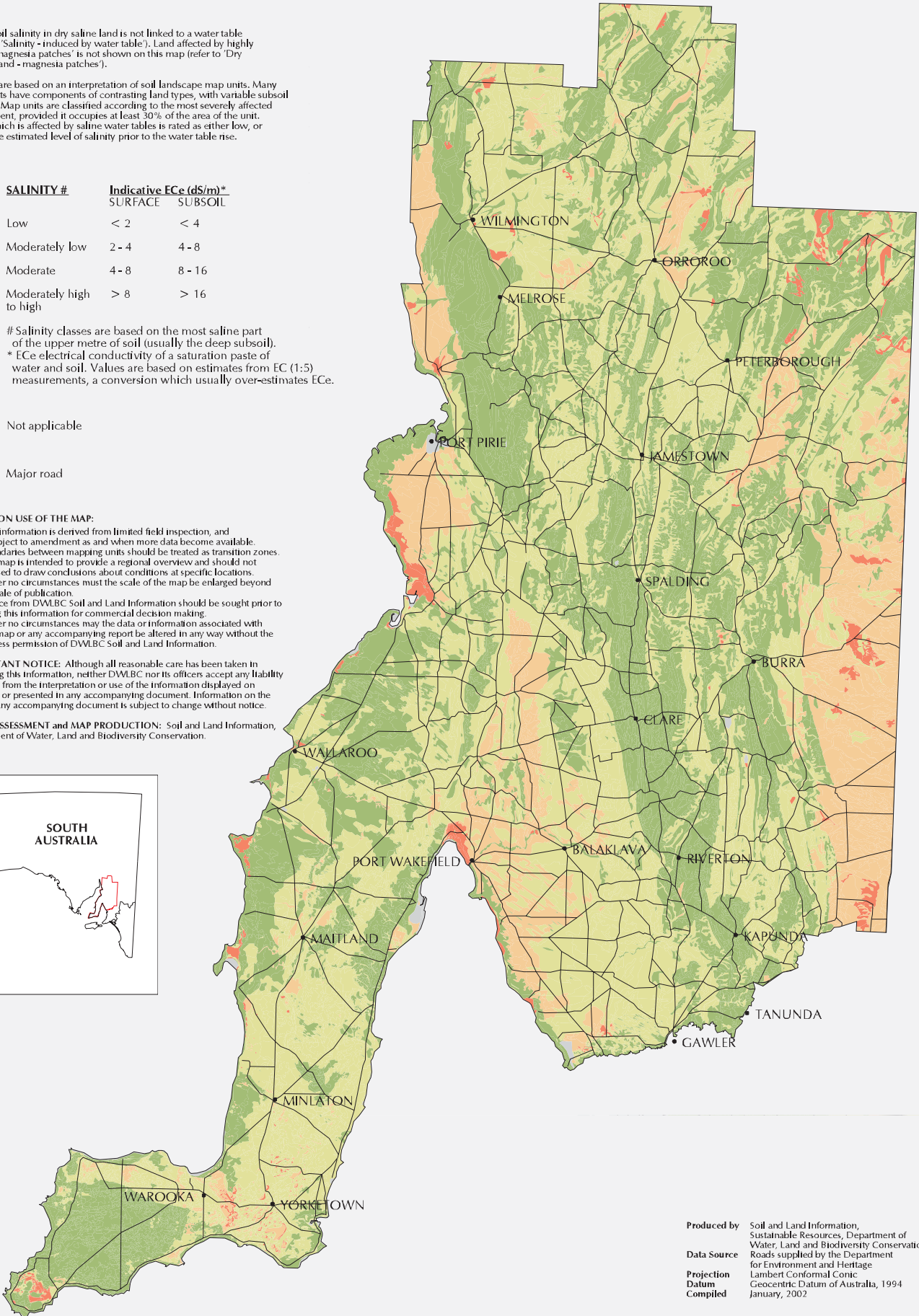
Major road

NOTES ON USE OF THE MAP:

1. This information is derived from limited field inspection, and is subject to amendment as and when more data become available.
2. Boundaries between mapping units should be treated as transition zones.
3. The map is intended to provide a regional overview and should not be used to draw conclusions about conditions at specific locations.
4. Under no circumstances must the scale of the map be enlarged beyond its scale of publication.
5. Advice from DWLBC Soil and Land Information should be sought prior to using this information for commercial decision making.
6. Under no circumstances may the data or information associated with this map or any accompanying report be altered in any way without the express permission of DWLBC Soil and Land Information.

IMPORTANT NOTICE: Although all reasonable care has been taken in preparing this information, neither DWLBC nor its officers accept any liability resulting from the interpretation or use of the information displayed on this map or presented in any accompanying document. Information on the map or any accompanying document is subject to change without notice.

LAND ASSESSMENT and MAP PRODUCTION: Soil and Land Information, Department of Water, Land and Biodiversity Conservation.



Produced by Soil and Land Information, Sustainable Resources, Department of Water, Land and Biodiversity Conservation
Data Source Roads supplied by the Department for Environment and Heritage
Projection Lambert Conformal Conic
Datum Geocentric Datum of Australia, 1994
Compiled January, 2002

