

Figure 3.7

Soil Landscapes Northern and Yorke Agricultural District

SOIL LANDSCAPE LEGEND

SOILS FORMED ON BASEMENT ROCK

- Non arable hills and rises with shallow stony soil and variable rock outcrop.
- Low hills and rises with mainly acid to neutral, loam to clay loam texture contrast soil.
- Low hills and rises with mainly acid to neutral, sandy to sandy loam texture contrast soil.
- Low hills and rises with mainly sandy to loamy, texture contrast soil with calcareous subsoil.
- Low hills and rises with mainly neutral to alkaline gradational soil, calcareous soil and/or shallow stony soil.

SOILS FORMED ON DEEPLY WEATHERED MATERIALS WITH IRONSTONE

- Plateaux, rises and low hills with mainly acid to neutral sandy to loamy texture contrast or gradational soil with ironstone.

SOILS FORMED ON UNCONSOLIDATED SEDIMENTS OR DEEPLY WEATHERED ROCK

- Rises and plains with mainly sandy texture contrast soil with calcareous subsoil.
- Rises and plains with mainly loamy texture contrast or gradational soil.
- Rises and plains with mainly calcareous soil.
- Rises and plains with mainly neutral to alkaline clay loamy to clayey soil.

SOILS FORMED ON OUTWASH SEDIMENTS DERIVED FROM BASEMENT ROCK HIGHS

- Plains and gentle slopes with mainly deep texture contrast soil with calcareous subsoil.
- Plains and gentle slopes with mainly deep calcareous soil or gradational/clayey soil with calcareous subsoil.
- Plains and gentle slopes with mainly deep neutral to acid soil.

SOILS FORMED ON RELICT COASTAL DUNES

- Relict coastal dunes with shallow soil on calcare, sandy texture contrast soil and / or deep sand.

SOILS FORMED ON MARINE / LAGOONAL CLAY OR LIMESTONE

- Plains with mainly neutral to alkaline gradational or texture contrast soil, often marginally saline.

SOILS FORMED ON CALCARETE

- Plains and rises with mainly shallow calcareous soil (or mixed calcareous and non-calcareous soil) on calcarete.
- Plains and rises with mainly shallow non-calcareous soil on calcarete.

SOILS FORMED ON SOFT / RUBBLY CALCAREOUS SEDIMENTS

- Plains and rises with mainly loamy calcareous soil.
- Plains, rises and dunes with mainly shelly sand to sandy loam.

DUNE FIELDS

- Dune/swale systems with mainly acid to neutral, bleached siliceous sand on dunes.
- Dune/swale systems with mainly neutral to alkaline, unbleached siliceous sand with calcareous subsoil on dunes.

COASTAL LAND

- Beaches, dunes, swamps, back plains, mud and samphire flats, shellgrit flats, tidal flats, mangroves and coastal cliffs.

MODERN WATERCOURSE / FRESHWATER WETLAND

- Flats, terraces and watercourses with modern alluvial soil; freshwater wetlands with swamp soils; and associated landforms.

SALINE LAND

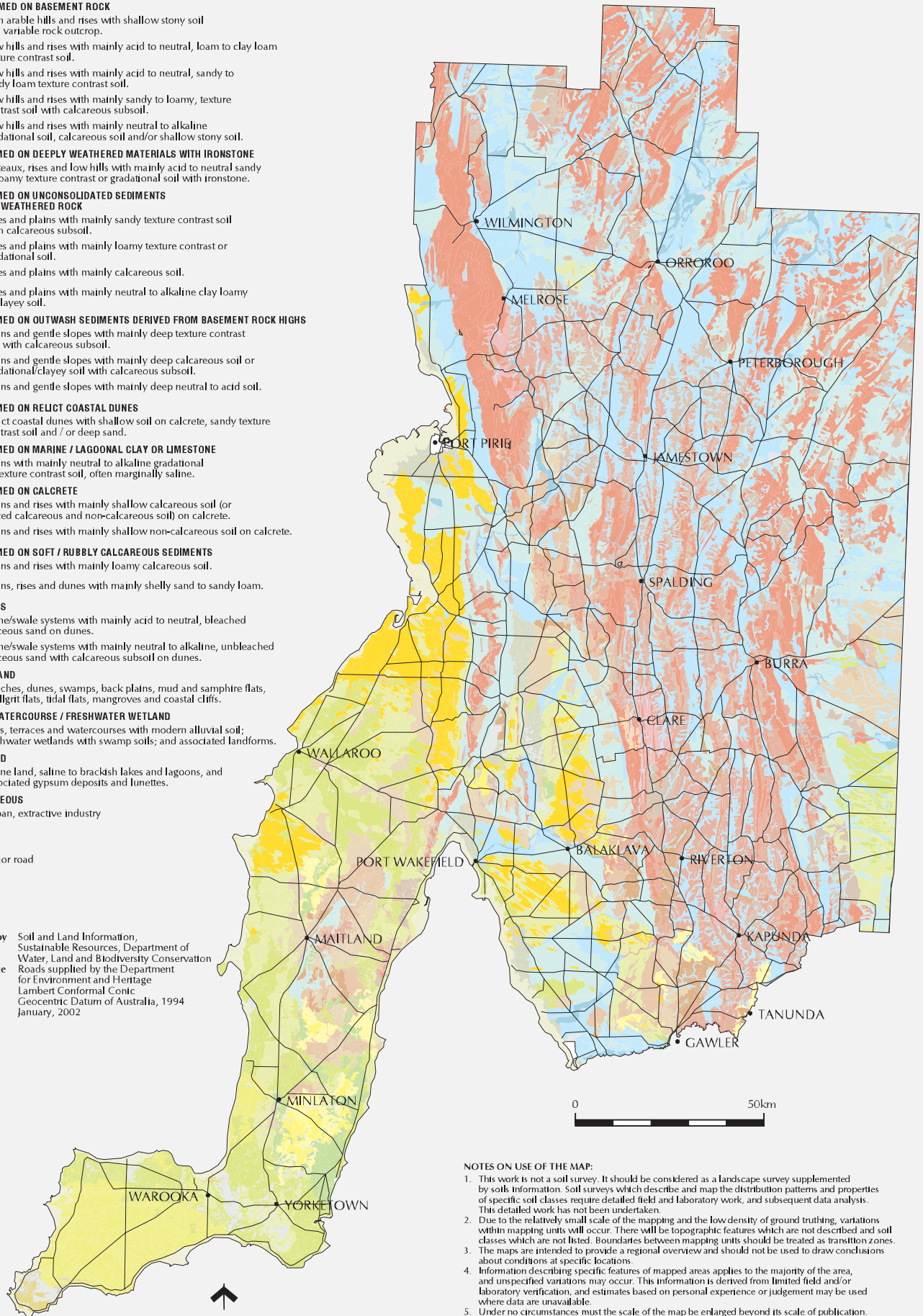
- Saline land, saline to brackish lakes and lagoons, and associated gypsum deposits and lunettes.

MISCELLANEOUS

- Urban, extractive industry

— Major road

Produced by Soil and Land Information, Sustainable Resources, Department of Water, Land and Biodiversity Conservation
 Data Source Roads supplied by the Department for Environment and Heritage
 Projection Lambert Conformal Conic
 Datum Geocentric Datum of Australia, 1994
 Compiled January, 2002



NOTES ON USE OF THE MAP:

1. This work is not a soil survey. It should be considered as a landscape survey supplemented by soils information. Soil surveys which describe and map the distribution patterns and properties of specific soil classes require detailed field and laboratory work, and subsequent data analysis. This detailed work has not been undertaken.
2. Due to the relatively small scale of the mapping and the low density of ground truthing, variations within mapping units will occur. There will be topographic features which are not described and soil classes which are not listed. Boundaries between mapping units should be treated as transition zones.
3. The maps are intended to provide a regional overview and should not be used to draw conclusions about conditions at specific locations.
4. Information describing specific features of mapped areas applies to the majority of the area, and unspecified variations may occur. This information is derived from limited field and/or laboratory verification, and estimates based on personal experience or judgement may be used where data are unavailable.
5. Under no circumstances must the scale of the map be enlarged beyond its scale of publication.
6. Advice from PIRSA Land Information should be sought prior to using this information for commercial decision making.

IMPORTANT NOTICE: Although all reasonable care has been taken in preparing this information, neither PIRSA nor its officers accept any liability resulting from the interpretation or use of the information displayed on this map or presented in any accompanying document. Information on the map or any accompanying document is subject to change without notice.

