

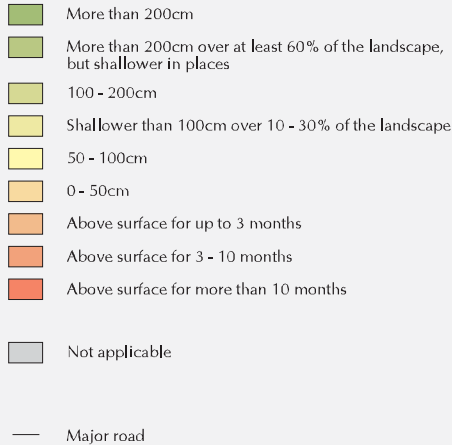
Figure 6.2

Depth to Water Table Northern and Yorke Agricultural District

Classes are based on an interpretation of soil landscape map units. These may have variable depths to water table. Map units are classified according to the component of the landscape with the shallowest depth to water table, provided that the component accounts for at least 30% of the area of the unit. An additional class identifies land where limited areas have water tables shallower than 100 cm.

DEPTH TO WATER TABLE

Estimate of maximum level maintained for at least two weeks per year

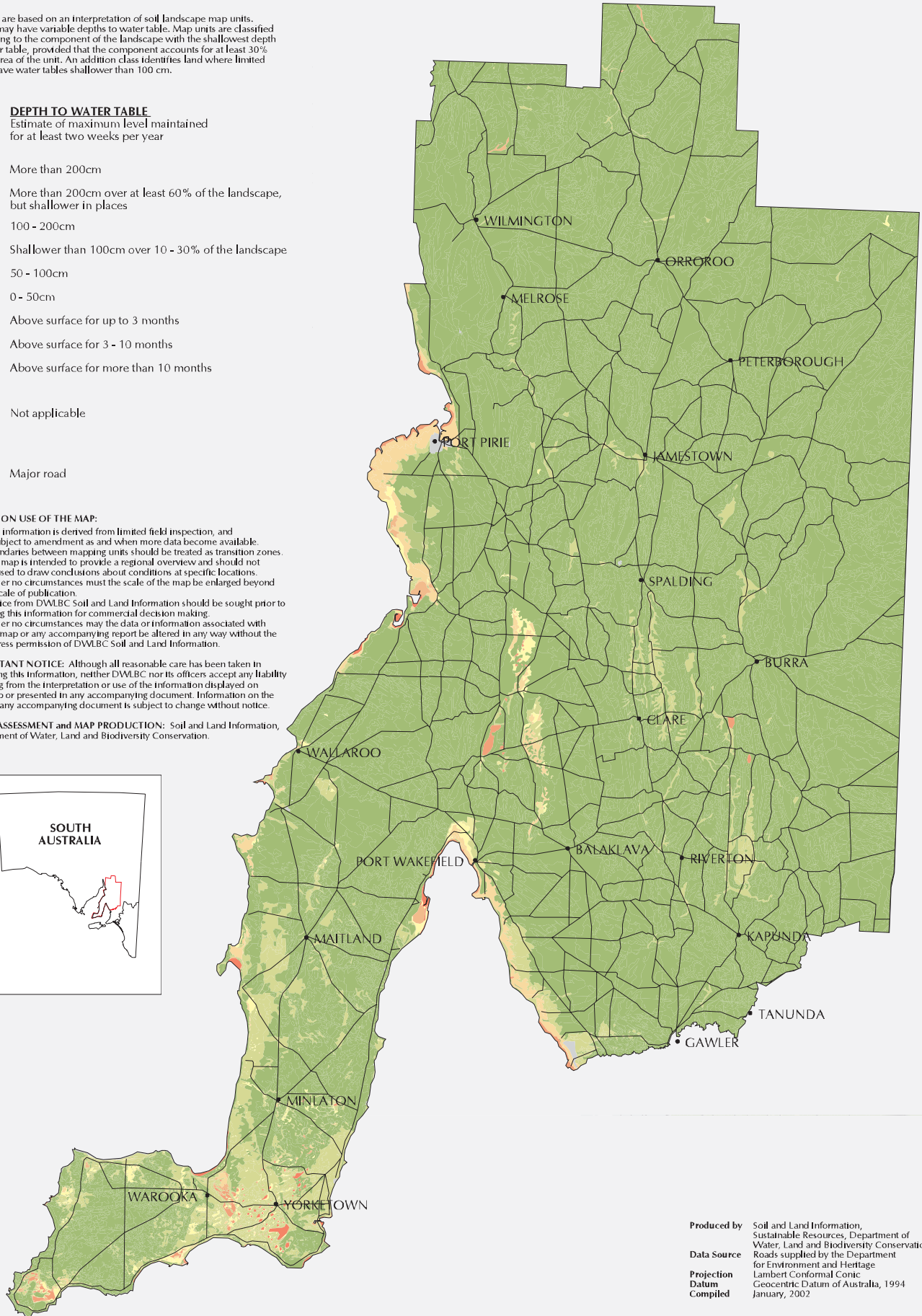


NOTES ON USE OF THE MAP:

1. This information is derived from limited field inspection, and is subject to amendment as and when more data become available.
2. Boundaries between mapping units should be treated as transition zones.
3. The map is intended to provide a regional overview and should not be used to draw conclusions about conditions at specific locations.
4. Under no circumstances must the scale of the map be enlarged beyond its scale of publication.
5. Advice from DWLBC Soil and Land Information should be sought prior to using this information for commercial decision making.
6. Under no circumstances may the data or information associated with this map or any accompanying report be altered in any way without the express permission of DWLBC Soil and Land Information.

IMPORTANT NOTICE: Although all reasonable care has been taken in preparing this information, neither DWLBC nor its officers accept any liability resulting from the interpretation or use of the information displayed on this map or presented in any accompanying document. Information on the map or any accompanying document is subject to change without notice.

LAND ASSESSMENT and MAP PRODUCTION: Soil and Land Information, Department of Water, Land and Biodiversity Conservation.



Produced by Soil and Land Information, Sustainable Resources, Department of Water, Land and Biodiversity Conservation
Data Source Roads supplied by the Department for Environment and Heritage
Projection Lambert Conformal Conic
Datum Geocentric Datum of Australia, 1994
Compiled January, 2002

