

# LUBRICATORS & DISPENSERS

## RDM SERIES

The RDM Series of multiple feed, large capacity reservoirs with central mounting shank provide for controlled lubrication for up to 30 points from one location. Manually operated toggle lever at the top of reservoir controls on/off full flow of oil to valves. Valve drip feed rate is individually set at each valve. Large reservoir provides 360° viewing at a glance. Fill cap with side vent minimizes the possibility of dust and dirt entering the reservoir. Exclusive patented compact manifold design allows for easy removal of any of the valves. Units with odd number of feeds will be furnished with greater number of feeds to the right side unless otherwise specified.

### Standard Materials:

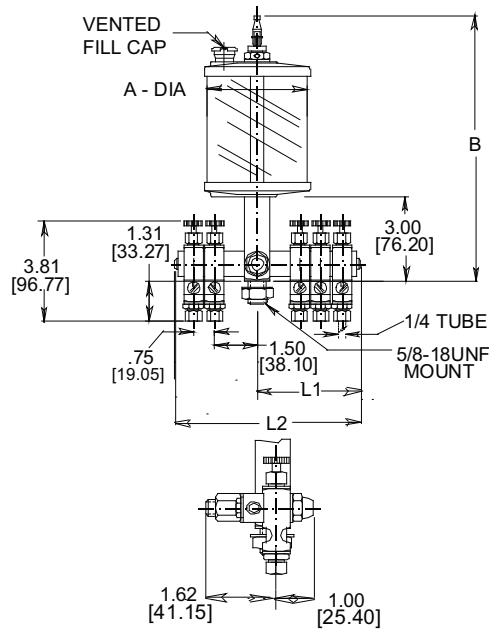
- Aluminum construction
- Buna N seals
- Break resistant, colorless transparent polymer

### Temperature and Pressure Ratings:

- Maximum working temperature up to 140°F (60°C)
- Rating is at atmospheric pressure

### NOTE:

- Please refer to Appendix LE-3 on page LE-A3 for Toggle Valve Adjustment Instructions
- For outdoor or damp applications, please specify Anodized.
- For replacement feeds, please order part number 352890



NOTE: All dimensions are inches [mm]

### ORDERING OPTIONS:

Order Suffix	Feeds
-02	Specify 02 through 30 feeds. (2 feeds are standard)
-30	

### HOW TO ORDER

EXAMPLE:  
**RDM103-02** — 2 feeds (standard)  
 Series RDM103 - 1 pint (.47 liter)  
 capacity reservoir



RDM Series			
Part No.	Capacity	A inches (mm)	B inches (mm)
<b>RDM101</b>	9.00 oz (266.20 mL)	3.00 (76.20)	8.50 (215.90)
<b>RDM102</b>	12.00 oz (354.90 mL)	3.00 (76.20)	9.50 (241.30)
<b>RDM103</b>	1.00 pt (.47 L)	3.50 (88.90)	9.50 (241.30)
<b>RDM104</b>	1.00 qt (.95 L)	4.25 (107.95)	10.69 (271.53)
<b>RDM105</b>	.50 gal (1.90 L)	5.50 (139.70)	12.75 (323.85)
<b>RDM106</b>	1.00 gal (3.80 L)	5.50 (139.70)	17.75 (450.85)

Feeds	-02 inches (mm)	-03 inches (mm)	-04 inches (mm)	-05 inches (mm)	-06 inches (mm)	-10 inches (mm)	-20 inches (mm)	-30 inches (mm)
<b>L1</b>	2.19 (55.62)	2.94 (74.68)	2.94 (74.68)	3.69 (93.73)	3.69 (93.73)	5.19 (131.83)	8.94 (227.08)	12.69 (322.33)
<b>L2</b>	4.38 (111.25)	5.12 (130.05)	5.88 (149.35)	6.62 (168.15)	7.38 (187.45)	10.38 (263.65)	17.88 (454.15)	25.38 (644.65)

**MODIFICATIONS AVAILABLE MADE TO ORDER - CONSULT OUR FACTORY (MINIMUM ORDER MAY BE REQUIRED)**

Dimensions and specifications are subject to change without notice. Not all items are Made-To-Stock, contact us for availability.

04/23

Ph : 920-682-6877  
 Fx : 920-684-7210



sales@ldi-industries.com  
 www.ldi-industries.com