



Thank you for your recent order!

QuikStik™ is designed for interior use only. Magic Murals is not liable for damages if QuikStik™ is not installed as outlined in this guide.

ACCEPTABLE WALL SURFACES

- Smooth, painted drywall/sheetrock
**Important* For recently primed or painted surfaces, allow a minimum of 14 days prior to install.*
 - Non-textured, smooth wallpaper
 - Interior glass
 - Smooth wood surfaces
 - painted/primed/stained plywood
 - hardboard/masonite
- *Removing QuikStik™ from a varnished surface may result in minor damage to the varnish coating.*

UNACCEPTABLE WALL SURFACES

- Orange peel and knockdown surfaces
- Textured, porous, or uneven surfaces
- “Commercial Grade” wallpapers - QuikStik™ will not adhere to wallpaper with “easy clean” or Teflon coatings
- Exterior wall surfaces
- Unpainted drywall, or walls with inferior paint applications
- Walls exposed to extremely humid conditions may be problematic

*If you recently painted your wall, make sure the final coat has cured for a minimum of 14 days before installation.

Installing Over Existing Wall Coverings:

If your mural is being applied to a wall with an existing, smooth wallcovering (especially with dark colors or patterns), we recommend removing it first or adding a solid coat of paint primer to the surface to prevent any possible “shadowing” or “color bleed” through the new mural. If you use a paint primer you must wait a minimum of 14 days for the paint to properly cure before installing the new mural.

Low-VOC/Stain Resistant Paints:

In some cases, paints with low-VOC formulas can prevent wall murals from adhering to the wall surface. To ensure good installation of your Magic Mural, we recommend cleaning your wall surface TWICE with a solution of 70% isopropyl alcohol/30% water. This cleaning method has been proven to significantly improve adhesion of your QuikStik™ mural to the wall.

Have a question? Contact our Customer Service Consultants at **877-448-7295**

GETTING STARTED

- Unroll and arrange mural panel(s) on the floor as they will be installed on the wall. Allow panel(s) to flatten for several hours.
- Measure the overall size of the mural AND wall to ensure a proper fit. *ALL multi-panel murals include a 3/4” overlap between panels which is accounted for in your overall ordered dimensions.*
- Please check your mural prior to installing. If there are any issues with the mural, do NOT install it. Contact us immediately at 877-448-7295 (Mon - Fri. 8:30am - 5:30pm EST) for assistance.
- **⚠️ WARNING: ELECTRICAL OUTLET/SWITCHES:** If the mural requires install around an outlet/switch, shut off power to circuit. Remove faceplate. Install over the box, trim away excess material covering outlet hole along edges and reinstall faceplate.

TOOLS NEEDED

Felt Squeegee Tool (provided)
 Scissors and Utility Knife

2” Wide Masking Tape
 Ladder or Step Stool

Measuring Tape
 (OPTIONAL) Another Person to Assist You

Ready? Let's Go! (Open to follow our easy, step-by-step instructions.)

STEP 1

PREP THE WALL SURFACE

Remove any objects (nails, hooks, fixtures, etc.) and clean the wall surface with a damp cloth to remove any dust. *(Do not use chemical cleaners.)*
Allow adequate time for wall to dry prior to application.

STEP 2



TAPE THE MURAL PANEL(S) IN PLACE

Using masking tape, position the first panel of your mural in place by taping the top two corners as shown in the photo at left.

**Proper alignment of the first panel is important for a straight and level installation! We recommend using a pencil to lightly mark the wall with the final desired position of the panel.*

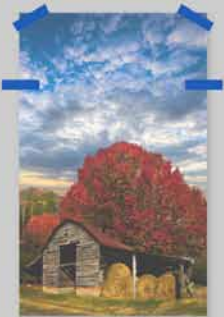
STEP 3

TAPE HINGE THE PANEL *(For multi-panel installations, you may start with either the right or the left panel of the mural.)*

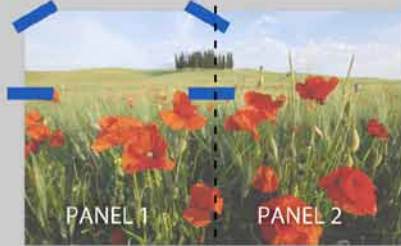
Using the diagrams below that correspond to the type of mural you received, add two more strips of masking tape to the mural panel to act as a "hinge", which will hold the mural in place while you apply the first section.

Mural Panels with VERTICAL APPLICATION:

Drop down 10" to 12" below each of the two corners and adhere a 6" strip of masking tape horizontally to the panel – 3" on the wall and 3" on the panel. Once the tape hinge is in place, remove the top two corner pieces of tape exposing the backing paper of the mural.



Vertical Mural
Single Panel



Horizontal Mural
Multi-Panel with Vertical Seam

Mural Panels with HORIZONTAL APPLICATION:

At the center of the panel, adhere a 6" strip of masking tape vertically at the top and bottom – 3" on the wall and 3" on the panel. Once the tape hinge is in place, remove the piece of tape from the left corner, exposing the backing paper of the left half of the mural.



Horizontal Mural
Single Panel

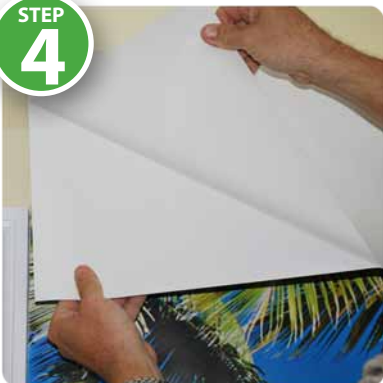


Vertical Mural
Multi-Panel with Horizontal Seam

STEP 4

PEEL THE MURAL

Peel the backing paper away from the mural exposing the sticky side of the mural. Be careful that it doesn't stick to itself.



Cut off the exposed backing paper using scissors or a utility knife, being careful to not damage the wall surface or the mural.



APPLY THE MURAL

Starting at a center position, just above the tape hinge, use horizontal strokes with the felt squeegee to apply the mural to the wall. Use gentle strokes and even pressure to apply the entire section in this same manner. Remove the remaining masking tape once the initial section of the mural is secure and adhered correctly.

Next, reach under the panel and carefully pull an 8-10" section of backing paper away from the panel, (see photo at right). Use horizontal strokes with the felt squeegee to apply the exposed mural to the wall.

Repeat this process 8-10" at a time until complete. If an air bubble appears during the application, gently pull up a portion of the mural to release the air pocket.

Re-apply using even pressure with felt squeegee until complete.



FOR MULTI-PANEL INSTALLATIONS CONTINUE TO STEP 6



INSTALL ADDITIONAL PANEL(S)

Position the next panel in sequence using masking tape as in Step 2. **All multi-panel murals include a ¾" overlap between panels which is accounted for in your overall ordered dimensions. Be sure to line up the next panel with the previously installed panel allowing an overlap of approximately ¾".**

Once the 2nd panel is in place and aligned, follow steps 3–5 to secure each additional mural panel to the wall in sequence to complete your installation.

****All panels have been pre-checked for consistency of alignment.***



*****DO NOT DOUBLE CUT OR FRENCH CUT THE INSTALLED PANEL SEAMS ON QUIKSTIK™ MURALS.*****

FINAL NOTES:

- If you ordered your mural slightly larger than your wall space, use a sharp utility knife and a straight-edge to carefully trim the mural to size.
- Finish your installation by using the felt squeegee to ensure all outside edges of the mural are well adhered to the wall surface.
- **Be sure to save backing paper and the shipping tube in the event you plan to move your mural to a different location or plan to store it.**
- QuikStik™ meets all requirements for ASTM E-84 testing with a Class "A" Fire Rating. 🌿



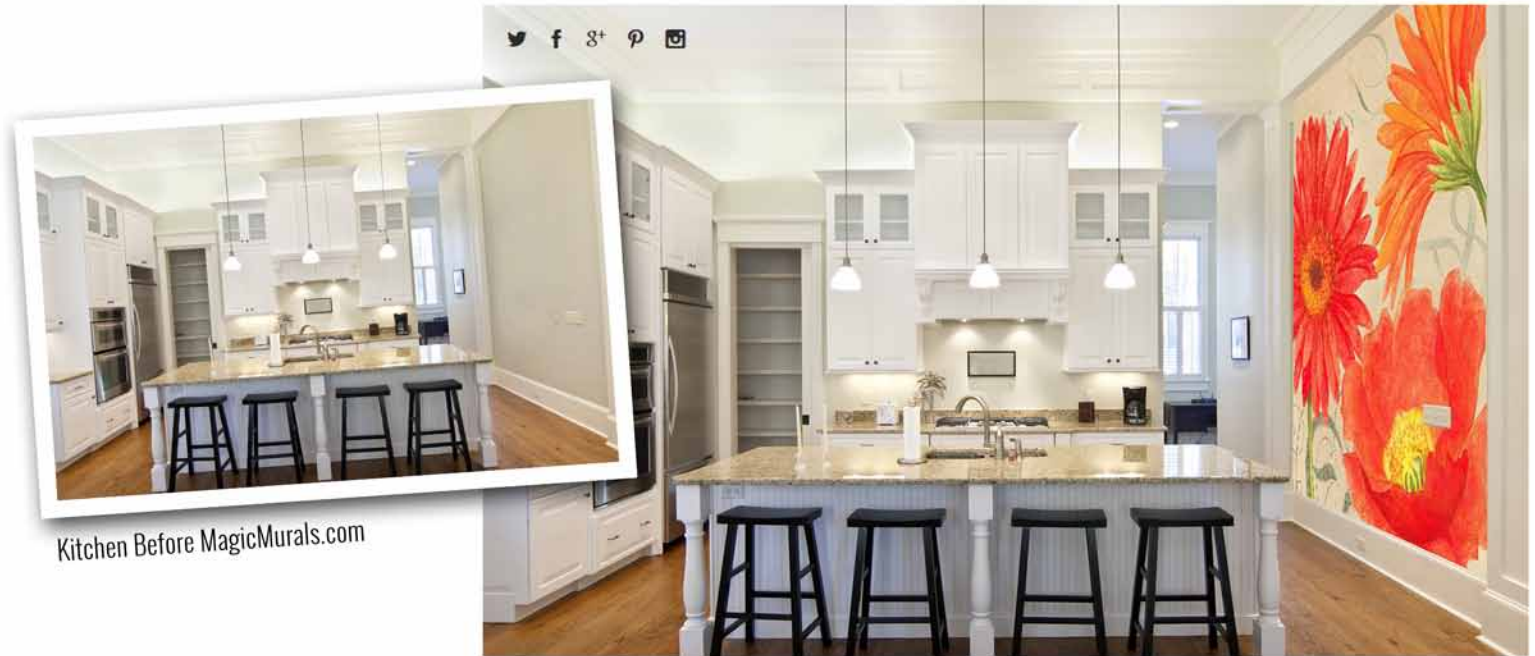
Congratulations... Enjoy your Magic Mural for years to come!
Thank You for your order!

Have a question? Contact our Customer Service Consultants at 877-448-7295

WIN a \$50 Magic Murals eGift Card



1. Take a great photo of your installed mural (*using the tips listed below*)
2. Email it to testimonials@magicmurals.com along with a testimonial about your customer experience which may be added to our online Customer Gallery and our various social media outlets.
3. We will contact the winner via email once one has been selected.



Kitchen Before MagicMurals.com

Tips for Taking a Great Photo of Your Mural:

- Turn on the lights to eliminate shadows.
- Clear out the clutter & stage the room like a professional.
- Take multiple photos of the **whole room or whole mural** from different angles.
- Please turn off your date/time stamp in your camera setting.
- Include your Order # or Name in your email subject.



Here's one example of a great customer photo and testimonial.

"My designer and I had been searching for an idea to capture fun and energy in my home office remodel. We had a beach concept, but needed something exciting to pull it off. After seeing this mural design online we knew we had just the thing. I was a little worried about the install as my husband and I were going to do it on our own - but after we got started it was done in just one evening. Lining up the seams was easy to do, looks professional and got perfect results - Just what I wanted!"

*Thanks Magic Murals!"
~ Leah D. - Dove Canyon
Mural: "Island Surfboards"*

For other great examples, check out our Customer Gallery:
www.magicmurals.com/testimonials

Have a question? Contact our Customer Service Consultants at 877-448-7295