

MAXMADE LIMITED

Planking Systems



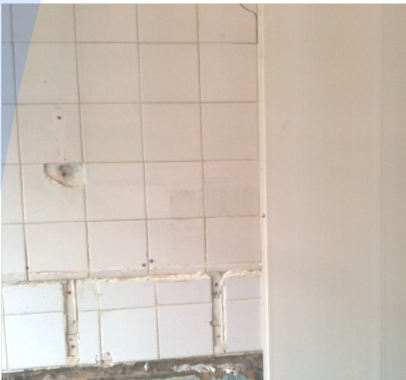
Cladding Profiles for Hygienic Environments



Maxmade Limited have been supplying the Clean Room and Temperature Controlled Building Industry since 1973. Initially only supplying specialist ceiling support systems and sheet metal fabrications.

Since this time, the company has gained a wealth of experience, and has developed its range of products to meet the new demands of this industry, and that of the Food Preparation Industry, including wall and door protection systems, wall and ceiling cladding systems and also supplying quality fixings and sealants to help complete the job.

A working solution



- Hygienic Quality PVC Sheets. 2mm, 2.5mm and 3mm thick.
- Coloured PVC sheets and trims.
- 8mm solid hidden fixing wall planking.
- 10mm Hollow section hidden fixing ceiling planking.
- Plus all ancillary trims and adhesives.

Our products are designed to suit varied applications. From the over-cladding of a small butchers shop, with cracked broken tiles and uneven walls, the over-cladding of old tired damaged composite panels in an abattoir, to industrial sized clean rooms. Maxmade can supply the solution to your cladding needs.

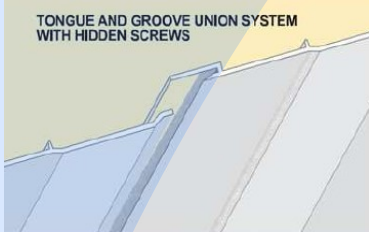
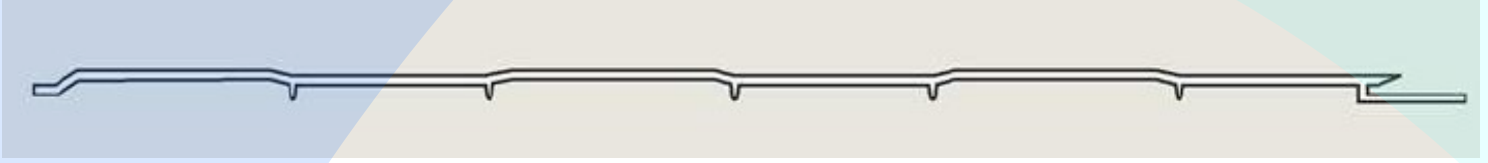
Contact our sales team for more information on any of our range of products.



Hemmings Way, Off Stoney Lane,
Rainhill, Prescot, Merseyside L35 9ND
www.maxmade.com sales@maxmade.com
Telephone: 0151 430 9797
Fax: 0151 493 1320



P100



USES:

- Protects panels from knocks.
- Protects from oxidation.
- Piping and wall lining for building works.
- Refurbishment of cold rooms.
- All types of facing.
- Easy to clean.
- No need to paint or tile walls.
- Low maintenance.



FEATURES:

- Solid slat manufactured in heavy duty PVC—2.5mm thick.
- 333mm wide—standard length of 3000mm. Special lengths to order.
- Corrugated finish prevents bending and deformation of walls.
- Uniform finish, no fixings seen due to hidden fixing system.
- Also available in a flat faced finish

P100 Technical Information

Table of Resistance to Chemical Products

Reagent	Temp –C	Resistant	Reagent	Temp –C	Resistant
Diesel Oil	20	Y	Cyclohexanol	60	Y
Machine Oil	60	Y	Sodium chloride	60	Y
Olive Oil	60	Y	Decaline	60	Y
Turpentine	20	Y	Ethanol	40	Y
Transformer Oil	60	Y	Diethyl Ether	20	N
Acetic Acid	40	Y	Petroleum Ether	20	Y
Chloridic Acid 10%	60	Y	Formalin	40	Y
Chloridic Acid 35%	60	Y	Gasoil-Benzl mix	20	N
Formic Acid 10%	40	Y	Glycol	60	Y
Formic Acid 100%	60	Y	Heptane	40	Y
Phosphoric Acid 10%	60	Y	Hexane	60	Y
Phosphoric Acid 85%	60	Y	Sodium Hydroxide 10%	60	Y
Nitric Acid	60	Y	Sodium Hydroxide 40%	60	Y
Sulphuric Acid 10%	60	Y	Sodium Hypochlorite	60	Y
Sulphuric acid 96%	60	Y	m-cresol	20	Y
Chromium sulphate Acid	20	Y	Methanol	20	Y
Reduced conc. Ammonia	40	Y	Potassium Permanganate	60	Y
Aniline	20	N	Potassium Persulfate	60	Y
Benzene for lacquer	20	Y	Caustic potash 10%	60	Y
Benzyl	20	N	Caustic potash 40%	60	Y
Butanol	60	N	Toluene	20	N
Ciclohexane	40	Y	Xylene	20	N

Table of Mechanical and Physical Properties

Conductivity coefficient (W/m C)	0.17
Linear expansion coefficient	5.10 –6 k-1
Use temperature range	+50 C to –20 C
Elasticity Module (kg/cm2)	25000
Length of breakage (%)	40
Mass density (g/cm3)	1.45
Stabilization	Lead Free
Shore Hardness D	78-88
Reaction to fire classification	Class1 / BS2do

Contact our sales team for more information on any of our range of products.



MAXMADE LIMITED

Hemmings Way, Off Stoney Lane,
Rainhill, Prescot, Merseyside L35 9ND

www.maxmade.com
sales@maxmade.com

Telephone: 0151 430 9797
Fax: 0151 493 1320

P300



FEATURES:

- Solid slat manufactured in heavy duty PVC—8mm thick
- 333mm wide—standard length of 3000mm. Special lengths to order.
- High Impact strength
- Uniform finish, no fixings seen due to hidden fixing system.



Uses:

- Hygienic joints, easy assembly with hidden fasteners.
- Easy to clean.
- Suitable for food factory environments.
- Non-oxidable.
- Maintenance free.
- Protects walls from steam and moisture.
- Resistant to fats and acids.
- Impact resistant.
- Fire Classification M-1.

Suitable for panelling and protecting; damaged or dirty insulation panels; tiled walls; painted block-work and plasterboard walls.



P300 Technical Information

Table of Resistance to Chemical Products

Reagent	Temp –C	Resistant	Reagent	Temp –C	Resistant
Diesel Oil	20	Y	Cyclohexanol	60	Y
Machine Oil	60	Y	Sodium chloride	60	Y
Olive Oil	60	Y	Decaline	60	Y
Turpentine	20	Y	Ethanol	40	Y
Transformer Oil	60	Y	Diethyl Ether	20	N
Acetic Acid	40	Y	Petroleum Ether	20	Y
Chloridic Acid 10%	60	Y	Formalin	40	Y
Chloridic Acid 35%	60	Y	Gasoil-Benzl mix	20	N
Formic Acid 10%	40	Y	Glycol	60	Y
Formic Acid 100%	60	Y	Heptane	40	Y
Phosphoric Acid 10%	60	Y	Hexane	60	Y
Phosphoric Acid 85%	60	Y	Sodium Hydroxide 10%	60	Y
Nitric Acid	60	Y	Sodium Hydroxide 40%	60	Y
Sulphuric Acid 10%	60	Y	Sodium Hypochlorite	60	Y
Sulphuric acid 96%	60	Y	m-cresol	20	Y
Chromium sulphate Acid	20	Y	Methanol	20	Y
Reduced conc. Ammonia	40	Y	Potassium Permanganate	60	Y
Aniline	20	N	Potassium Persulfate	60	Y
Benzene for lacquer	20	Y	Caustic potash 10%	60	Y
Benzyl	20	N	Caustic potash 40%	60	Y
Butanol	60	N	Toluene	20	N
Ciclohexane	40	Y	Xylene	20	N

Table of Mechanical and Physical Properties

Conductivity coefficient (W/m C)	0.07
Linear expansion coefficient	54.10 –6
Use temperature range	+60 C to –20 C
Elasticity Module (n/mm2)	1200
Length of breakage (%)	40
Mass density (g/cm3)	0.55
Coextrusion layer density (g/cm3)	1.4
Shore Hardness D	74
Reaction to fire classification	Class1 /BS2do

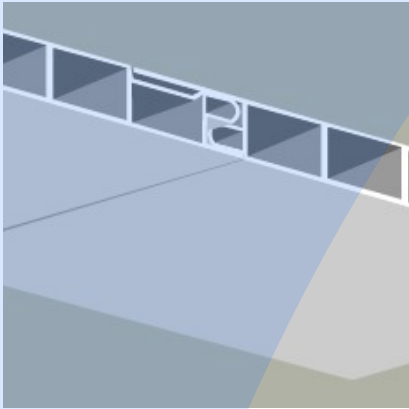
Contact our sales team for more information on any of our range of products.



MAXMADE LIMITED

Hemmings Way, Off Stoney Lane,
Rainhill, Prescot, Merseyside L35 9ND
www.maxmade.com
sales@maxmade.com
Telephone: 0151 430 9797
Fax: 0151 493 1320

Lamas



FEATURES:

- Hollow section slat manufactured in heavy duty PVC—Overall 10mm thick
- 333mm wide—standard length of 3000mm. Special lengths to order.
- Uniform finish, no fixings seen due to hidden fixing system.



Uses:

- Hygienic joints, easy assembly with hidden fasteners.
- Easy to clean.
- Suitable for food factory environments.
- Non-oxidable.
- Maintenance free.
- Protects walls from steam and moisture.
- Resistant to fats and acids.
- Fire Classification M-1.

Lamas Technical Information

Table of Resistance to Chemical

Reagent	Temp –C	Resistant	Reagent	Temp –C	Resistant
Diesel Oil	20	Y	Cyclohexanol	60	Y
Machine Oil	60	Y	Sodium chloride	60	Y
Olive Oil	60	Y	Decaline	60	Y
Turpentine	20	Y	Ethanol	40	Y
Transformer Oil	60	Y	Diethyl Ether	20	N
Acetic Acid	40	Y	Petroleum Ether	20	Y
Chloridic Acid 10%	60	Y	Formalin	40	Y
Chloridic Acid 35%	60	Y	Gasoil-Benzl mix	20	N
Formic Acid 10%	40	Y	Glycol	60	Y
Formic Acid 100%	60	Y	Heptane	40	Y
Phosphoric Acid 10%	60	Y	Hexane	60	Y
Phosphoric Acid 85%	60	Y	Sodium Hydroxide 10%	60	Y
Nitric Acid	60	Y	Sodium Hydroxide 40%	60	Y
Sulphuric Acid 10%	60	Y	Sodium Hypochlorite	60	Y
Sulphuric acid 96%	60	Y	m-cresol	20	Y
Chromium sulphate Acid	20	Y	Methanol	20	Y
Reduced conc. Ammonia	40	Y	Potassium Permanganate	60	Y
Aniline	20	N	Potassium Persulfate	60	Y
Benzene for lacquer	20	Y	Caustic potash 10%	60	Y
Benzyl	20	N	Caustic potash 40%	60	Y
Butanol	60	N	Toluene	20	N
Ciclohexane	40	Y	Xylene	20	N

Table of Mechanical and Physical Properties

Conductivity coefficient (W/m C)	0.17
Linear expansion coefficient K-1	5.10 –6
Use temperature range	+50 C to –20 C
Elasticity Module (kg/cm2)	25000
Length of breakage (%)	40
Mass density (g/cm3)	1.4
Stablisation	Lead Free
Reaction to fire classification	Class1 /BS2do

Contact our sales team for more information on any of our range of products.



Hemmings Way, Off Stoney Lane,
Rainhill, Prescot, Merseyside L35 9ND
www.maxmade.com
sales@maxmade.com
Telephone: 0151 430 9797
Fax: 0151 493 1320

Ancillary Items

Finishing Trims

P-100



Part REF 3: 2 part H Section with Flexi Edge - 3000mm



Part REF 1: 2 Part Capping Strip with Flexi Edge—3000mm



Part REF 8: 2 Part External corner —3000mm



P-300



Part REF 12: Wide 2 Part H Section —3000mm



Part REF 4: 2 part H Section Joint—3000mm



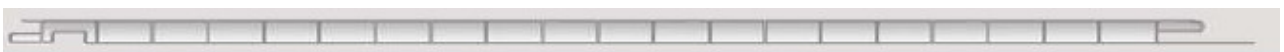
Part REF 6: External Corner Capping —3000mm



Part REF 2: 2 Part Capping Strip —3000mm



Lamas



Part REF 2: 2 Part Capping Strip —3000mm



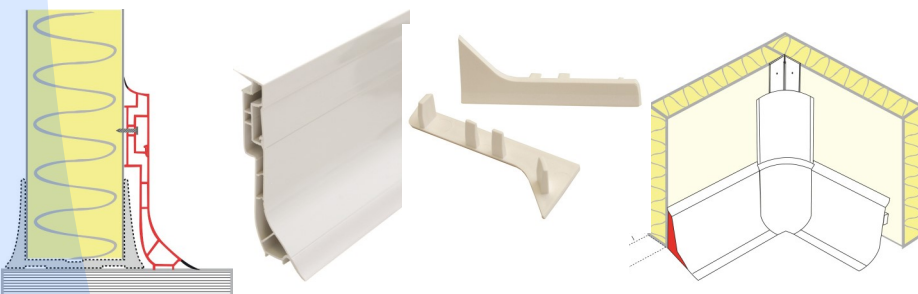
Part REF 8: 2 Part External Corner —3000mm



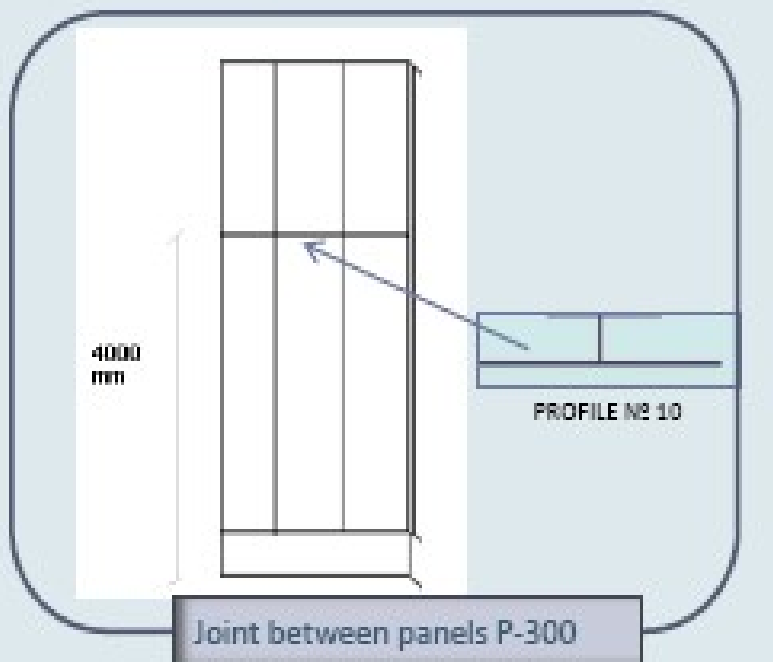
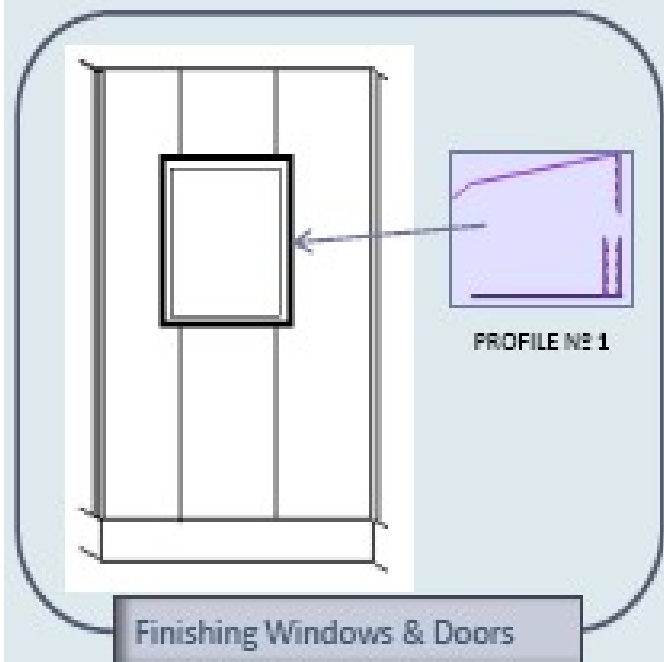
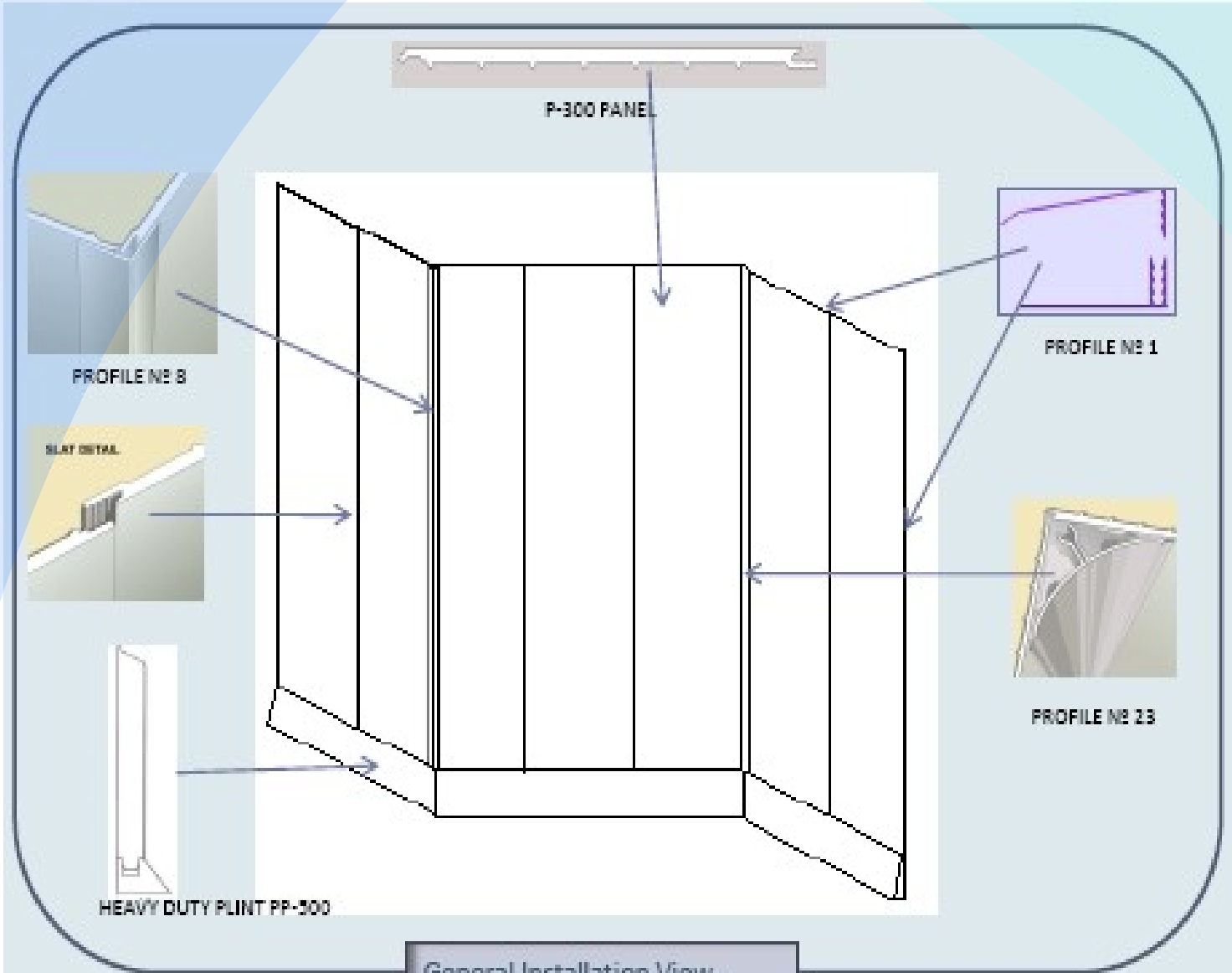
Part REF 10: H Section Joint —3000mm



Please see our Coldroom & Cleanroom Accessories 2019 Brochure for more details on Coves, Plinths and bump



Fitting Guide P300



PVC



USES:
Typical applications of the PVC Hygienic Cladding include the hygienic wall cladding for food, laboratory, and chemical buildings.



FEATURES:

- Meets fire resistance classification BS476: Part 7 : Surface spread of flame: Class 1 BS476 Parts 6&7 : Class O and European Union ISO 13501-1 B s3 clo.
- Approved for use with foodstuffs as specified in European Directive 97/48/EC
- Does not contain any of the banned or restricted substances on the Ericsson List.
- Can prevent and reduce colonies of specified micro organisms.
- Complies with European Directive 2002/95/EC regarding concentrations of heavy metals and heavy metal compounds of lead, cadmium mercury, and hexavalent chromium and concentrations of flame retardants based on polybrominated biphenyls and polybrominated diphenyl ethers.

Contact our sales team for more information on any of our range of products.



Hemmings Way, Off Stoney Lane,
Rainhill, Prescot, Merseyside L35 9ND
www.maxmade.com
sales@maxmade.com
Telephone: 0151 430 9797
Fax: 0151 493 1320

PVC Technical Information

Typical Physical properties

Property	Method	Conditions	Units	Value
Density	D-1505		g/cm ³	1.4
Heat Deflection Temperature	D-648	Load 1.82 MP	0C	65-68
Service Temperature Range			0C	-10 to +50
Thermal conductivity	C-177		W/m K	0.15
Coefficient of thermal linear expansion	D-696		cm/cm 0C	6.7 x 10 ⁻⁵
Impact falling weight	ISO 6603/1	3 mm sheet	J	95
Rockwell hardness	D-785		R scale	97R
Tensile strength at yield	D-638	10 mm/min	MPa	52
Tensile strength at break	D-638	10 mm/min	MPa	50
Elongation at yield	D-638	10 mm/min	%	3
Elongation at break	D-638	10 mm/min	%	140
Tensile modulus of elasticity	D-638	1 mm/min	MPa	2 900
Flexural strength	D-790	1.3 mm/min	MPa	80
Flexural modulus	D-790	1.3 mm/min		2 700

Additional information:

- Sizes available :
2440mm x1220mm
& 3050x1220
- Thicknesses 2mm, 2.5mm and 3mm
- Available in Satin and Gloss Finish
- Colours also available.
- Ancillary trims include:
1 part and 2 part H and J sections
Internal and External corners
Skirting, coves and dunnage also available.

Contact our sales team for more information on any of our range of products.



MAXMADE LIMITED

Hemmings Way, Off Stoney Lane,
Rainhill, Prescot, Merseyside L35 9ND

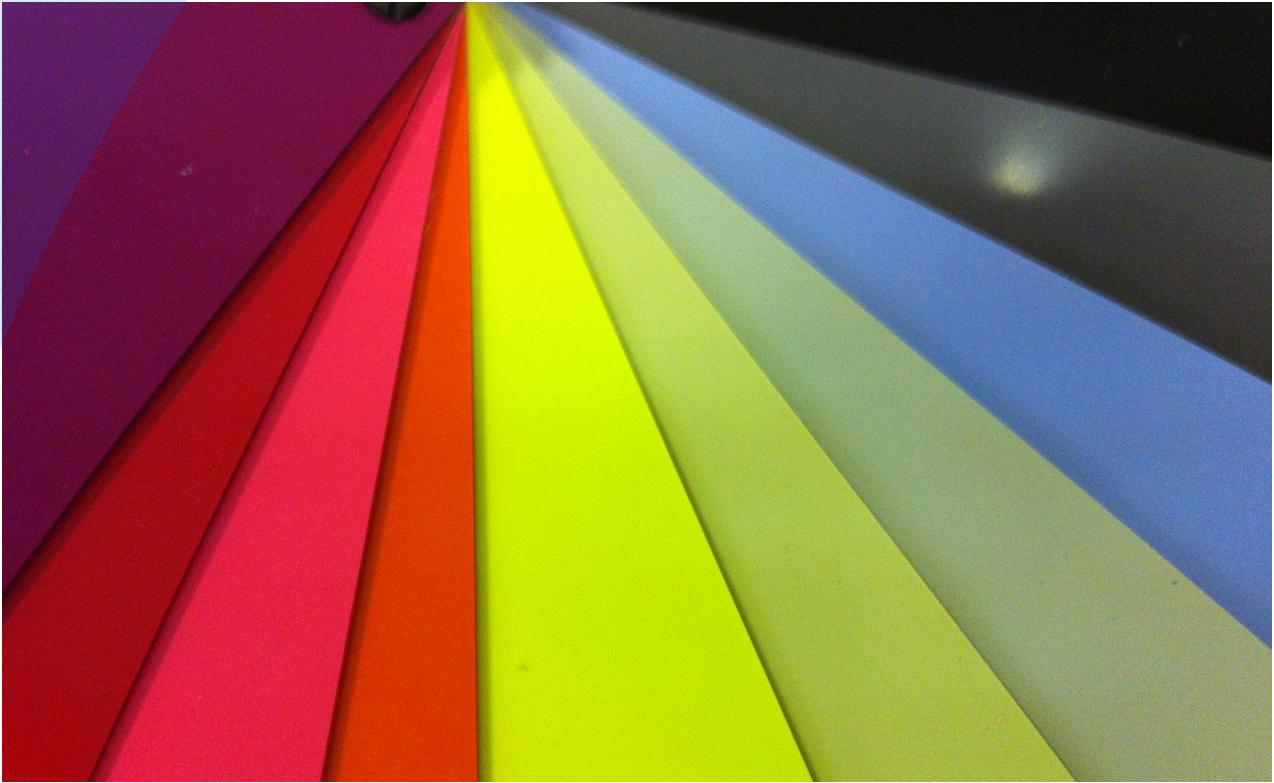
www.maxmade.com
sales@maxmade.com

Telephone: 0151 430 9797
Fax: 0151 493 1320

PVC Coloured Sheets

USES:

Typical applications of the PVC Coloured Sheet include the hygienic wall cladding for food, laboratory, and chemical buildings, recreational and public facilities, and general decorative cladding.



FEATURES:

- Excellent chemical resistance.
- Withstands repeated cleaning cycles.
- High Impact strength.
- Easily fabricated and formed.
- Highest fire rating.
- High electrical and thermal insulation.
- Non –Toxic.
- Available in 3000x1220 x 2.5mm thick sheets.
- Matching silicone and trims available.

Colours:

- Red Wine
- Red
- Dark Pink
- Orange
- Lime Green
- Green Grape
- Avocado
- Ocean Blue
- Medium Grey
- Black



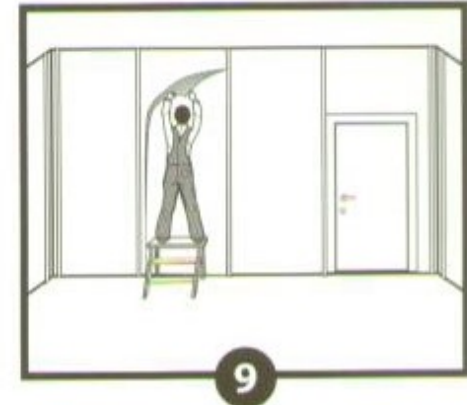
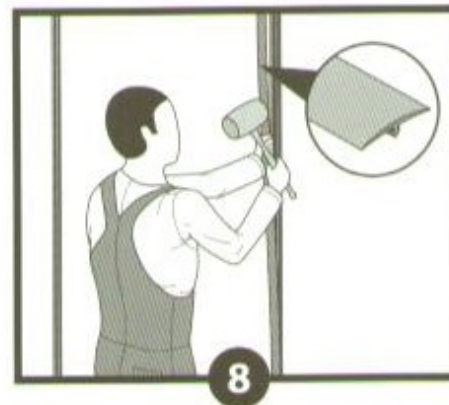
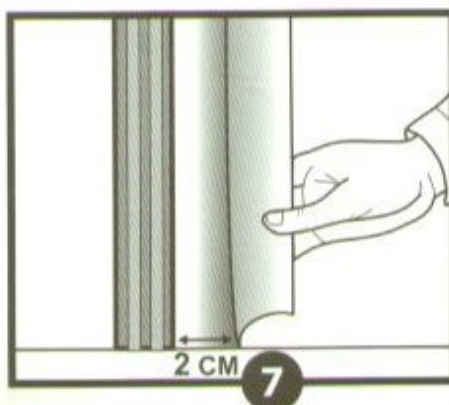
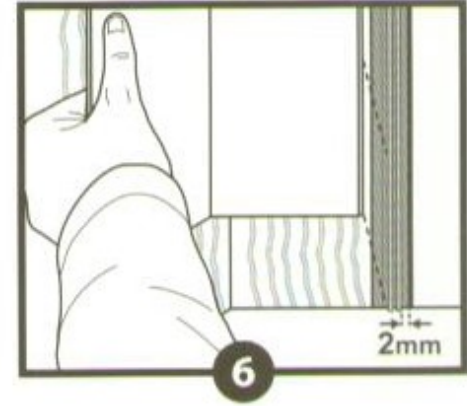
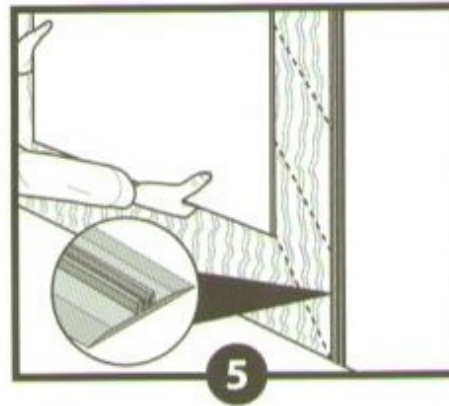
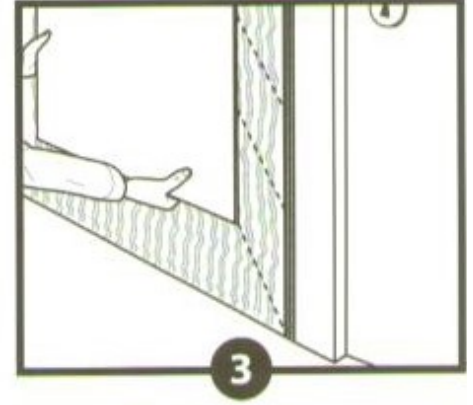
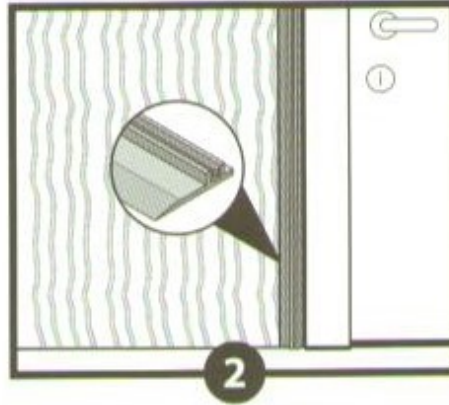
PVC Sheet Fitting Guide

Preparation:

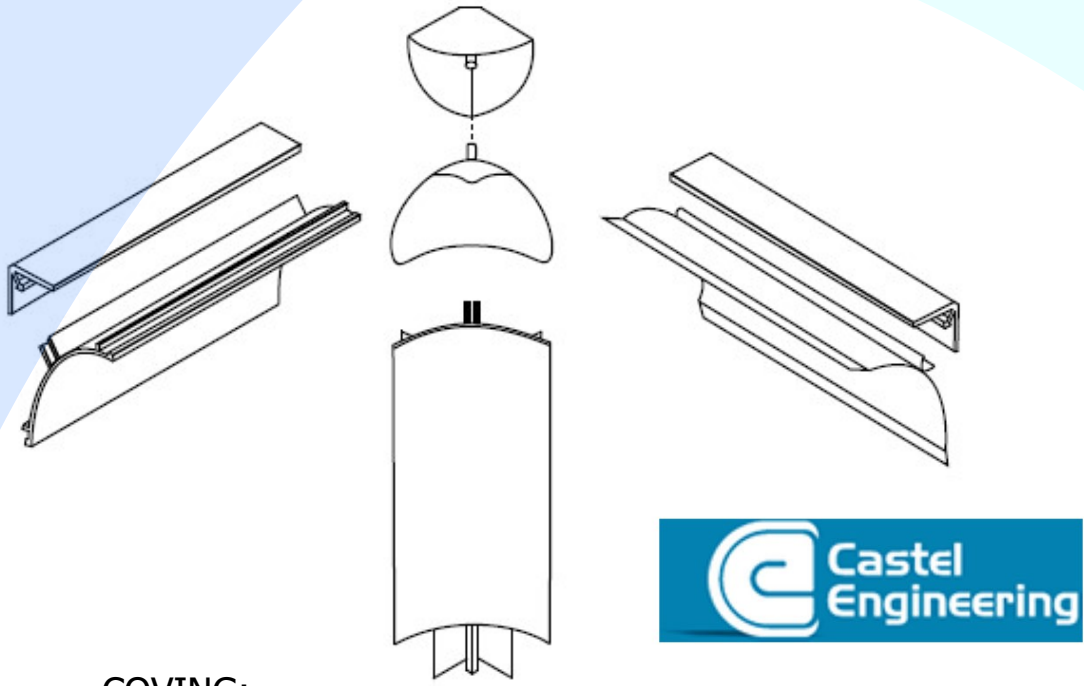
- Store sheets on a flat surface and away from direct sunlight.
- Panels should be acclimated to room temperature for 24-36 hours prior to installation.
- Walls should be reasonably level and flat. Remove high spots and fill dents.
- All surfaces must be clean and dry.
- If necessary, cut the sheets and profiles to suitable dimensions for the intended

Installation guidelines:

1. Apply the glue on the wall, following instructions given.
2. Position and attach a trimmed H base or profile to the wall.
3. Attach the first sheet to the wall and profile.
4. Apply pressure to the entire sheet to ensure good adhesion and removal of trapped air.
5. Position the h section base and leave at least a 2mm gap for expansion
6. Prepare internal and ext. corners.
7. When all panels are in place, peel off the edges of the protective film 2cm from edge
8. Attach the profile caps onto bases using a rubber mallet.
9. Peel off the protective films after all other jobs on site are finished.



Finishing Trims

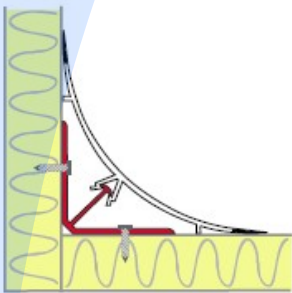


COVING:

Our two part coving gives a quality finish to the wall to wall and wall to ceiling joints. A robust aluminium backer is used to hold the PVC cove, giving you a visually pleasing finish with a easy cleanable corner as required by food and chemical buildings regulations.

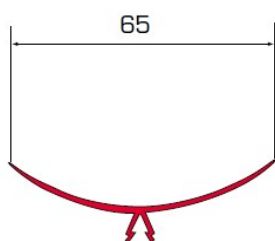
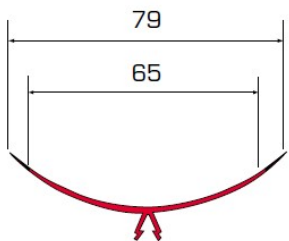
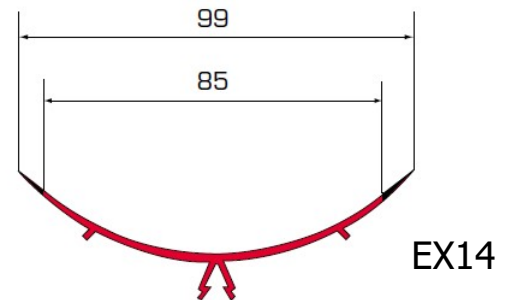
The 2 part coving comes in three sizes, some of which have ancillary items such as end caps and corners.

The Backer section is extruded aluminium. The front cove is a prime grade pvc in white.



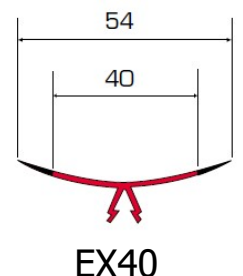
Large:

The EX14 Flexi-edged 2 part cove is the largest section, available in 4 mtr lengths. This section comes with internal three way corners, external two way corners and end caps ancillary parts.



Medium:

The EX54 Flexi-edged, and EX11 Rigid-edge 2 part cove is available in 4 mtr lengths. This section only comes with internal three way corners.



Small:

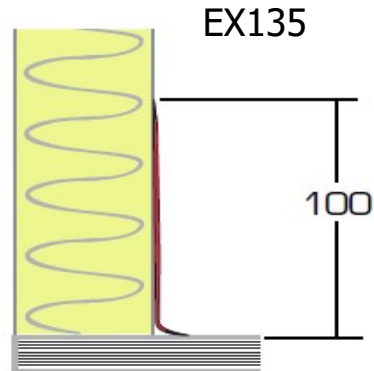
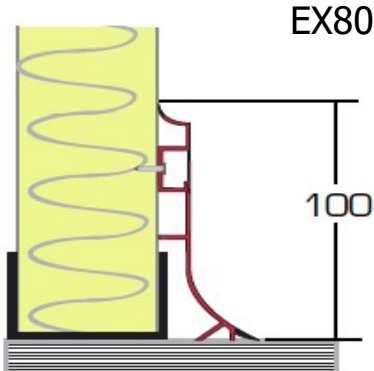
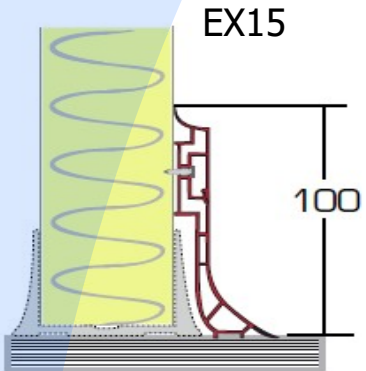
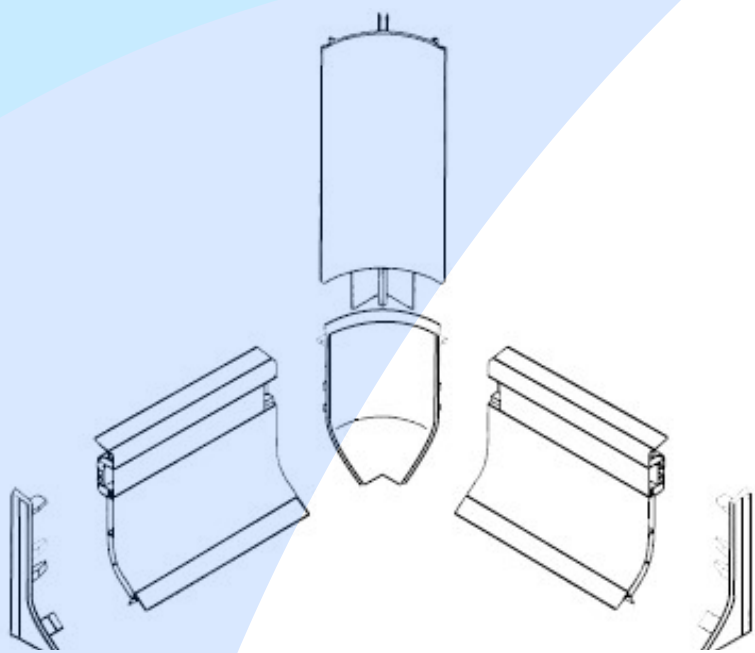
The EX40 Flexi-edged 2 part cove is available in 4 mtr lengths. This section comes with internal three way corners, external two way corners and end caps ancillary parts.

Finishing Trims

SKIRTING:

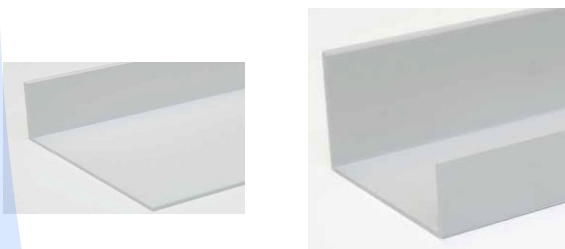
Made from prime pvc, the skirting sections are in either white or black. They are supplied in 4 mtr lengths.

The double skinned skirting system works in conjunction with the two part covers to give an aesthetically, but functional finish to wall to floor joints. For the EX15 and EX80 Skirting a range a series of ancillary sections are available.



Channels and Angles:

Channels are available 50, 75, 80 and 100mm. Angles are available 50x50 and 100x50 They are supplied in 4 mtr lengths.



Flexible Profile:

Coming in 50x50 and 80x80 wide sections @4mtr lengths



Bump Rails:

Heavy duty and Light duty bump rails are available in 4mtr lengths. With a selection of corners and stop ends.

