

MD[®] MUSTANG DYNAMOMETER



Performance Chassis Dynamometers

2024

Known As The Best By The Best!

For over 45 years, Mustang Dynamometers has been a leading manufacturer and designer of the highest quality, most accurate chassis dynamometers for the performance market and emission

testing programs worldwide. Mustang dynos are better because they help make our customers more successful. Mustang has perfected the art and science of vehicle loading and dynamometer control and has a complete lineup of performance tuning products. For the best tuning results, you need a dyno that applies an accurate load, like the car would see on the road or track. Some other dynos might give higher horsepower readings to try to impress, but if those readings are not based on actual real-world loading, and chances are that horsepower won't be there when you

need it at the track. Mustang Dynamometer is the most accurate and reliable dyno because it provides real-world loading and precise control. That's why Mustang is known as the best by the best.

"The accurate loading and repeatability of our Mustang Dyno gives us the confidence to know that vehicles will perform on the race track or street exactly as they do on the dyno."

- CobbTuning.com

Philosophy

Mustang Dynamometer has always focused on our guiding principles: build the best equipment, deliver the best service and help our customers become the best in their field.

Flexibility

From engine dynamometers, transmission dynamometers, chassis dynamometers, from heavy equipment manufacturers to arenas such as NASCAR and the Indy Racing League, Mustang delivers accurate, high-performance testing and tuning abilities that professionals demand. Also we have developed custom applications for clients such as NASA, Caterpillar, Harley-Davidson, and The U.S. Military.

Quality

Mustang Dynamometer is the only dyno manufacturer in the industry to attain ISO 9001:2015 quality certification. All of Mustang's research and development, software design, manufacturing, electrical, and fabrication operations are done in-house to ensure that the dynamometers we produce are state-of-the-art and deliver on our promise to be the best dynamometers in the industry.

2WD Model	Upgradeable to AWD	Max. HP	Inertia	Max. Speed	Roll Dia.	Maximum Axle Weight
MD-150-SE	-	1,200 HP	630 lbs.	175 mph	8.575"	6,000 lbs.
MD-250-SE	-	1,500 HP	2,000 lbs.	175 mph	10.7"	12,000 lbs.
MD-500-SE XL	YES	1,500 HP	2,000 lbs.	190 mph	12.625"	6,000 lbs.*
MD-500-SE 80-inch OT	YES	1,500 HP	1,190 lbs.	190 mph	12.625"	6,000 lbs.*
MD-600-SE	-	2,000 HP	2,000 lbs.	200 mph	19.75"	6,000 lbs.
MD-800-SE	YES	2,000 HP	1,555 lbs.	200 mph	24"	10,000 lbs.
MD-1100-SE	YES**	2,500 HP	1,500 lbs.	200 mph	30"	10,000 lbs.
MD-1750-SE	YES	3,000 HP	2,530 lbs.	250 mph	50"	10,000 lbs.



AWD Model	Max. HP AWD/2WD	Inertia AWD/2WD	Max. Speed AWD/2WD	Roll Dia.	Maximum Axle Weight
MD-AWD-150-SE-V8	2,000 / 1,200 HP	1,260 / 630 lbs.	155 / 165 mph	8.575"	6,000 lbs.
MD-AWD-500-SE XL	3,000 / 1,500 HP	3,625 / 2,000 lbs.	175 / 190 mph	12.625"	6,000 lbs.
MD-AWD-800-DE 24X	3,000 / 2,000 HP	1,800 / 900 lbs.	175 / 200 mph	24"	10,000 lbs.
MD-AWD-1100-SE	3,500 / 2,500 HP	3,300 / 1,500 lbs.	175 / 225 mph	30" & 12.625"	10,000 lbs.
MD-AWD-1750-SE	3,500 / 3,000 HP	3,300 / 2,530 lbs.	150 / 250 mph	50" & 12.625"	10,000 lbs.



NOTES: * 12,000 lbs. Available
** Only if ordered with special frame



MD-150-SE

Max Horsepower	1,200HP	
Max Speed	175MPH	282KPH
Roll Diameter	8.575"	21.8cm
Face Length	35"	89.0cm
Inner Track	18"	45.7cm
Outer Track	88"	223.5cm
Space Between	17.1"	43.4cm
Inertia	630 lbs	286kg
Max Axle Weight	6,000 lbs	2,722kg
Power Req.:	115VAC, 1 phase, 15A 230VAC, 1 phase, 40A	



MD-250-SE

Max Horsepower	1,500HP	
Max Speed	175MPH	282KPH
Roll Diameter	10.7"	27.2cm
Face Length	40"	101.6cm
Inner Track	28"	71.1cm
Outer Track	108"	274.3cm
Roll Spacing	19.6"	49.8cm
Inertia	2,000 lbs	907kg
Max Axle Weight	12,000 lbs	5,443kg
Power Req.:	115VAC, 1 phase, 15A 230VAC, 1 phase, 40A	



MD-500-SE

Max Horsepower	1,500HP	
Max Speed	190MPH	306KPH
Roll Diameter	12.625"	32.1cm
Face Length	31"	78.7cm
Inner Track	18"	45.7cm
Outer Track	80"	203.2cm
Inertia	1,190 lbs	540kg
Max Axle Weight	6,000 lbs	2,722kg
Power Req.:	115VAC, 1 phase, 15A 230VAC, 1 phase, 40A	

Air Requirement for All 2WD Dynamometers: 100 PSI, dry, regulated, oil-free.

Controls: Closed Loop Digital Controller with web based Hole Shot Software. Includes patented Virtual Road Simulation Technology.

Rollers: Knurled Finish, Bi-directional

Roll Lock/Lift: Between roll lift with roll lock





MD-500-SE XL

Max Horsepower	1,500HP	
Max Speed	190MPH	306KPH
Roll Diameter	12.625"	32.1cm
Face Length	37"	93.9cm
Inner Track	24"	60.9cm
Outer Track	98"	248.9cm
Inertia	2,000 lbs	907kg
Max Axle Weight	6,000 lbs	2,722kg
Power Req.:	115VAC, 1 phase, 15A 230VAC, 1 phase, 40A	



MD-600 Series

Max Horsepower	1,500HP	
Max Speed	175MPH	282KPH
Roll Diameter	19.75"	50.2cm
Face Length	41"	104.1cm
Inner Track	24"	66.1cm
Outer Track	108"	274.3cm
Inertia	2,000 lbs	907kg
Max Axle Weight	6,000 lbs	2,722kg
Power Req.:	115VAC, 1 phase, 15A 230VAC, 1 phase, 40A	



MD-800 Series

Max Horsepower	2,000HP	
Max Speed	200MPH	322KPH
Roll Diameter	24"	60.9cm
Face Length	28.5"	72.4cm
Inner Track	29"	73.7cm
Outer Track	86"	218.4cm
Inertia	900 lbs	408kg
Max Axle Weight	10,000 lbs	4,536Kg
Power Req.:	115VAC, 1 phase, 15A 230VAC, 1 phase, 40A	

Air Requirement for All 2WD Dynamometers: 100 PSI, dry, regulated, oil-free.

Controls: Closed Loop Digital Controller with web based Hole Shot Software. Includes patented Virtual Road Simulation Technology.

Rollers: Knurled Finish, Bi-directional

Roll Lock/Lift: Between roll lift with roll lock



MD-1100 Series

Max Horsepower	2,500HP	
Max Speed	200MPH	322KPH
Roll Diameter	30"	76.2cm
Face Length	50"&28"	127&71cm
Inner Track	30"	76.2cm
Outer Track	108"	274.3cm
Inertia	2,000 lbs	907kg
Max Axle Weight	10,000 lbs	4,536Kg
Power Req.:	115VAC, 1 phase, 15A 230VAC, 1 phase, 40A	



MD-1750 Series

Max Horsepower	3,000HP	
Max Speed	250MPH	402KPH
Roll Diameter	50"	127.0cm
Face Length	28"	71.1cm
Inner Track	28"	71.1cm
Outer Track	84"	213.4cm
Inertia	2,530 lbs	1,148kg
Max Axle Weight	10,000 lbs	4,536Kg
Power Req.:	115VAC, 1 phase, 15A 230VAC, 1 phase, 40A	

Air Requirement for All 2WD Dynamometers: 100 PSI, dry, regulated, oil-free.

Controls: Closed Loop Digital Controller with web based Hole Shot Software. Includes patented Virtual Road Simulation Technology.

Rollers: Knurled Finish, Bi-directional

Roll Lock/Lift: Between roll lift with roll lock



MD-AWD-150 Series

Max Horsepower	2,000HP(AWD)	
	1,200HP(2WD)	
Max Speed	165MPH	266KPH
Roll Diameter	8.575"	21.8cm
Face Length	35"	89.0cm
Inner Track	30"	76.0cm
Outer Track	86"	218.4cm
Wheelbase Range	96-122"	244-310cm
Inertia	1,260 lbs(AWD)	
	630 lbs(2WD)	
Max Axle Weight	6,000 lbs	2,722Kg
Power Req.:	230VAC, 1 phase, 60 Hz, 40A - SE	
	230VAC, 3 phase, 60 Hz, 40A - DE	



MD-AWD-500 Series

Max Horsepower	3,000HP(AWD)	
	1,500HP(2WD)	
Max Speed	190MPH	306KPH
Roll Diameter	12.625"	32.1cm
Face Length	31"	78.7cm
Inner Track	18"	45.7cm
Outer Track	80"	203.2cm
Wheelbase Range	88-118"	224-300cm
Inertia	2,152 lbs(AWD)	
	1,190 lbs(2WD)	
Max Axle Weight	6,000 lbs	2,722Kg
Power Req.:	230VAC, 1 phase, 60 Hz, 40A - SE	
	230VAC, 3 phase, 60 Hz, 40A - DE	



MD-AWD-500-XL

Max Horsepower	3,000HP(AWD)	
	1,500HP(2WD)	
Max Speed	190MPH	306KPH
Roll Diameter	12.625"	32.1cm
Face Length	37"	93.9cm
Inner Track	24"	60.9cm
Outer Track	98"	248.9cm
Wheelbase Range*	84-126"	213-320cm
Inertia	3,625 lbs(AWD)	
	2,000 lbs(2WD)	
Max Axle Weight	6,000 lbs	2,722Kg
Power Req.:	230VAC, 1 phase, 60 Hz, 40A - SE	
	230VAC, 3 phase, 60 Hz, 40A - DE	

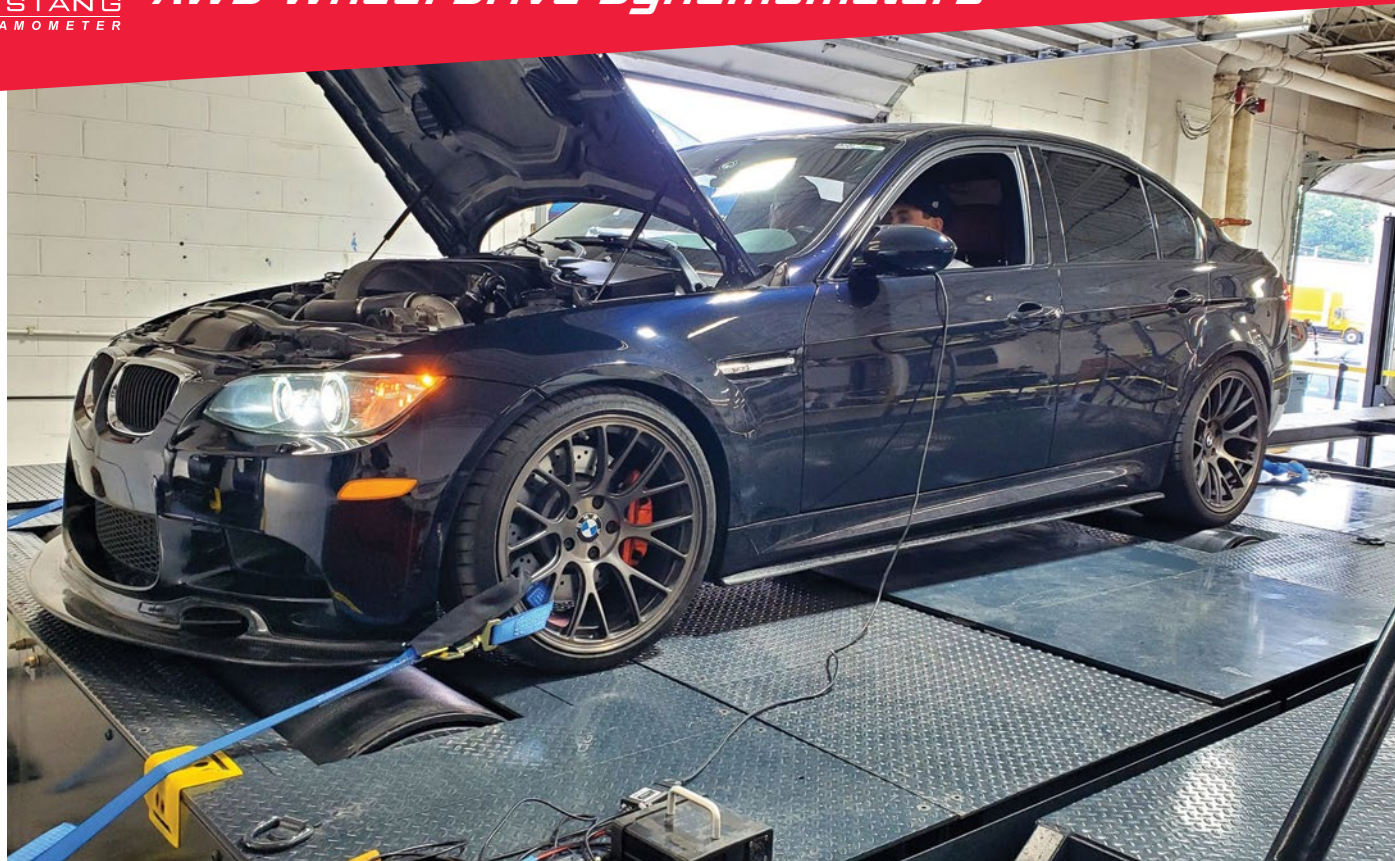
* Longer wheelbase range available

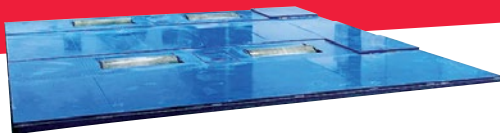
Air Requirement for All AWD Dynamometers: 100-110 PSI, dry, regulated, oil-free.

Controls: Closed Loop Digital Controller with web based Hole Shot Software. Includes patented Virtual Road Simulation Technology.

Rollers: Knurled Finish, Bi-directional

Roll Lock/Lift: Between roll lift with roll lock





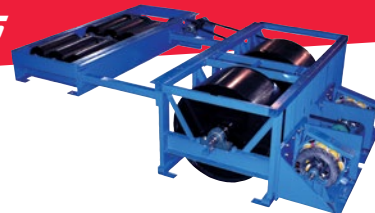
MD-AWD-800 Series

Max Horsepower	3,000HP(AWD) 2,000HP(2WD)
Max Speed	200MPH 322KPH
Roll Diameter	24" 27.2cm
Face Length	2x29" 101.6cm
Inner Track	28" 71.1cm
Outer Track	86" 274.3cm
Wheelbase Range	89-126" 226-320cm
Inertia	1,800 lbs(AWD) 900 lbs(2WD)
Max Axle Weight	10,000 lbs 4,536Kg
Power Req.:	230VAC, 1 phase, 60 Hz, 40A - SE 230VAC, 3 phase, 60 Hz, 40A - DE



MD-AWD-1100 Series

Max Horsepower	3,500HP(AWD) 2,500HP(2WD)
Max Speed	225MPH 362KPH
Roll Diameter	30" rear / 12.625" front
Face Length Rear	37" front roll set 28/50" rear roll set
Inner Track	30/24" (2WD/AWD)
Outer Track	108/98" (2WD/AWD)
Wheelbase Range	80-134" 203-340cm
Inertia	3,300 lbs(AWD) 1,500 lbs(2WD)
Max Axle Weight	10,000 lbs 4,536Kg
Power Req.:	230VAC, 1 phase, 60 Hz, 40A - SE 230VAC, 3 phase, 60 Hz, 40A - DE



MD-AWD-1750 Series

Max Horsepower	3,500HP(AWD) 3,000HP(2WD)
Max Speed	250MPH 402KPH
Roll Diameter	50" rear / 12.625" front
Face Length	28" 71.1cm
Inner Track	30" 76.2cm
Outer Track	84" 213.4cm 96" option 243.8cm
Wheelbase Range	88-118" 224-300cm
Inertia	3,300 lbs(AWD) 2,5300 lbs(2WD)
Max Axle Weight	10,000 lbs 4,536Kg
Power Req.:	230VAC, 1 phase, 60 Hz, 40A - SE 230VAC, 3 phase, 60 Hz, 40A - DE

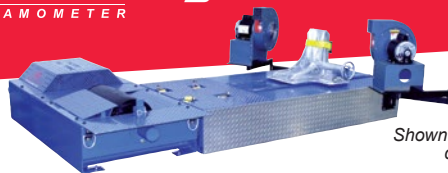
Air Requirement for All AWD Dynamometers: 100-110 PSI, dry, regulated, oil-free.

Controls: Closed Loop Digital Controller with web based Hole Shot Software. Includes patented Virtual Road Simulation Technology.

Rollers: Knurled Finish, Bi-directional

Roll Lock/Lift: Between roll lift with roll lock





Shown with optional dual cooling fans



EC997-13 **Low Inertia Model**

Max Horsepower	750HP	
Max Speed	200MPH	322KPH
Roll Diameter	12.625"	32.1cm
Roll Width	12"	30.5cm
Wheelbase	96"	243.8cm
Inertia	174 lbs	79kg

EC997-20 **High Speed Model**

Max Horsepower	1000HP	
Max Speed	225MPH	362KPH
Roll Diameter	19.75"	50.2cm
Roll Width	12"	30.5cm
Wheelbase	96"	243.8cm
Inertia	233 lbs	106kg
<i>Longer Wheelbase Available</i>		

EC997 MC /QUAD-13 **Low Inertia Model**

Max Horsepower	750HP	
Max Speed	200MPH	322KPH
Roll Diameter	12.625"	32.1cm
Roll Width	35"	89.0cm
Wheelbase	96"	243.8cm
Inertia	407 lbs	185kg

EC997-20 **High Speed Model**

Max Horsepower	1000HP	
Max Speed	225MPH	362KPH
Roll Diameter	19.75"	50.2cm
Roll Width	19.88"	50.5cm
Wheelbase	96"	243.8cm
Inertia	500 lbs	227kg
<i>Longer Wheelbase Available</i>		

MD-SXS/UTV

Max Horsepower	850HP	
Max Speed	200MPH	322KPH
Roll Diameter	12.625"	32.1cm
Inner Track	19"	48.3cm
Outer Track	80"	203.2cm
Inertia MC Mode	394 lbs	179kg
UTV/SxS/ATV mode	671 lbs	304kg

Controls: Closed Loop Digital Controller with web based Hole Shot Software. Includes patented Virtual Road Simulation Technology.

Rollers: Knurled Finish, Bi-directional

Roll Lock/Lift: Between roll lift with roll lock





Perfect for trade events, marketing campaigns, equipment-sharing arrangements, rental agreements, portable emissions testing... you name it!

Depending upon the dynamometer that is selected, Mustang can offer an enclosed trailer design or a flatbed trailer-mounted portability system to meet your specific application requirements.

Enclosed Trailer Design

A popular portable dyno setup is to incorporate a pallet jack and caster sets into the frame of the dyno, allowing it to be easily raised and pulled around the shop floor or moved from one location to another inside an enclosed trailer. An electric winch is often used to pull a portable dyno up a set of ramps and into an enclosed trailer.

Flatbed Trailer Design

For larger systems, such as an AWD-500, the dynamometer is built directly into the chassis of a flatbed trailer. All components of the system are also cleverly designed into the flatbed trailer making setup of the system effortless. Simply park the trailer, lower the ramps, plug everything in, strap it down, and you are off and running in no time at all. A portable MD-AWD-500 is a true show-stopper. Add a drag racing tree and a few large screen monitors running Mustang's DragSim Drag Racing Simulator and you will draw a large crowd to watch real-world simulations of 1/4 mile and 1/8 mile drag racing. A trailer-mounted MD-AWD-500 is the ultimate promotional tool.

Heavy Duty

Mustang designs and manufactures a line of heavy-duty dynamometers for testing of diesel, electric and hybrid electric vehicles such as trucks, buses and commercial vehicles in addition to the standard car or light duty pick-ups. Several of these products are certified in the states of Colorado, Nevada and Utah for use in loaded-mode diesel smog testing programs because of its accuracy and reliability. No other dyno in its class offers more value or better in-house motor vehicle testing capabilities than Mustang's line of Heavy-duty Chassis Dynamometers..

MD-250-HD

Max HP: 1,500hp

Max Speed: 175mph

MD-1000

Max HP: 2,000hp

Max Speed: 125mph

MD-7500-HD

Max HP: 3,000hp

Max Speed: 100mph

Emissions Dynamometers

Mustang Dynamometer has set the standards for equipment manufactured and used worldwide for centralized emissions testing. Our pioneering experience has led us to be the world leader in the design and manufacturing of rugged inspection and maintenance hardware and software for the I/M industry. We have centralized testing lanes installed all over the world in climates from cold to hot and from wet to dry, all designed to meet our customer's demands.



Visit MustangDyne.com for More Information

Or Contact
Sales@MustangDyne.com for
more details.



Mustang Dynamometer has many essential accessories for any complete dyno cell, as well as promotional items as well. Visit MustangDyne.com for more details.



Jbox

As the primary vehicle data collection device, the Jbox is portable and connected by 15-ft USB cable to the server and has all the inputs ports for tachometer and all the sensors needed.



Jbox Accessory Kit

Measure engine speed by clamping the Inductive Pickup Sensor around a secondary ignition cable. While traditionally used on a Spark Plug wire, it can also be used on a coil wire for a better response.



Optical RPM Pickup Sensor

Unaffected by electromagnetic interference, this sensor works by monitoring light as it bounces off a piece of reflective tape applied to a rotating object.



Air/Fuel Ratio Oxygen Sensor

Accurately determine exhaust gas mixture over a wide range of engine conditions with this air/fuel ratio oxygen sensors. Integrates controller/ data acquisition system for graphing AFR against horsepower, torque and engine RPM.



OBD-II Adapter w/Software

Provides a direct connection to the vehicle's OBDII port, where every critical engine parameter can be captured directly from your vehicle's computer into the dynamometer controller software.



Oil Temperature Sensor

Accurately measure and monitor engine oil temperature. Closely monitoring engine oil temperature ensures your dyno runs are comparable and increases repeatability.



Aluminum Ramps

Manufactured from high strength aluminum material, Mustang's ramp package is lightweight and easy to move in and out of position by a single person.



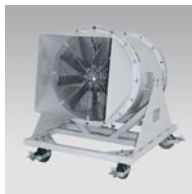
Composite Ramps

Available for the MD-150 series chassis dynamometers, and manufactured from light weight industrial composite, these ramps are lightweight and easy to move in and out of position by a single person.



Standard Engine Cooling Fan

Generates air flow of 10,800 CFM. Additional options include automatic fan speed controller and adjustable fan height.



Premium Engine Cooling Fan

Generates up to 32,000 CFM and features a variable speed motor controller to match the fan's output airflow to the dynamometer's roll speed.



Premium Five Gas Analyzer

Accurately measure the 5 major gases contained in the vehicle exhaust stream. Seamlessly integrated with your dyno controls, DAC system for graphing each gas against horsepower, torque and engine RPM.



Exhaust Extractor Unit

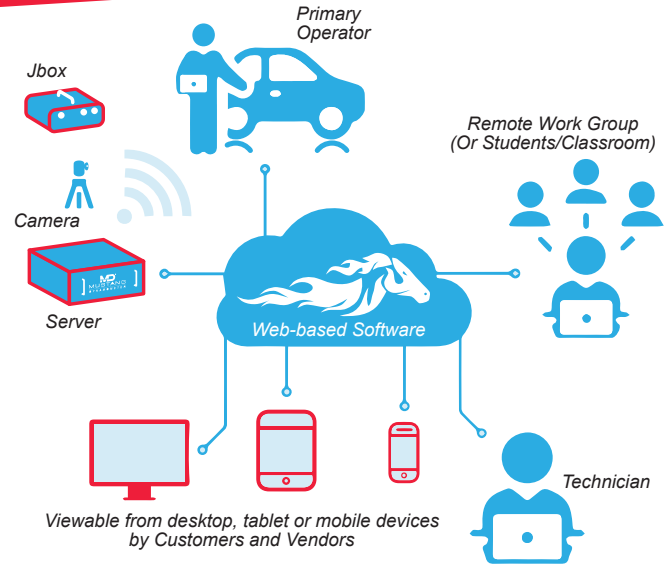
This system is the best way to protect mechanics and garage employees from the potentially harmful gases released from vehicles running on the dyno is to capture it at the source: directly at the tailpipe.

Mustang Dynamometer has many essential accessories for any complete dyno cell, as well as promotional items as well. Visit MustangDyne.com for more details.

Hole Shot™ Control Software

Mustang adopted web-based technology in 2016 when it embarked on a new project to advance dynamometer technology and simplify its offerings. Mustang's goal was to increase commonality and provide customers with a more powerful and easier to manage controls package. Mustang already offered a full menu of testing capabilities. *Hole Shot* control software increases access and decreases clutter. Being a web-based systems, Mustang can better service thousands of customers world-wide from one location and keep them on the most up to date system available. All enhancements can be pushed to all customers at the same time making sure all installations are up to date.

Hole Shot control software comes standard with every new performance chassis dynamometer Mustang produces. The software offers an advanced DragSim feature that includes custom 3D drag strips, vehicle avatars, and playback modules that allows your customers to share their experience with others.

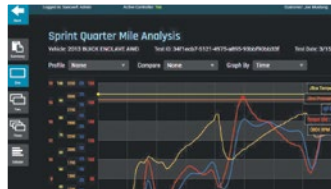


Customizable Interface



MustangDyne.com

Wireless Access



Live Data Broadcast



18

Scheduling, Loading Data



(330) 963-5400



Benefits

- Automatic system upgrades via cloud computing
- Service and support the dynamometer via the web making resolving issues easier
- Video streaming capabilities for viewing and interacting
- Multiple clients can log into the system all at the same time
- Designed for Remote Teaching and Learning

Mustang Dynamometer's *Hole Shot* dynamometer controls software utilizes web based techniques, an HD camera, social media and modern tech to help transform your Mustang dyno into a self-promoting digital business. Customers can schedule runs, obtain their data and share results via an app we provide making data entry a thing of the past; simply enter in the user's handle or email address, click on their icon and start testing. Shop branded videos, runs and photos are automatically delivered to your customer from the software eliminating the need to print results.

Because of its capabilities, *Hole Shot* software is perfect for remote learning for automotive technical schools as well as performance tuning shops.

Features

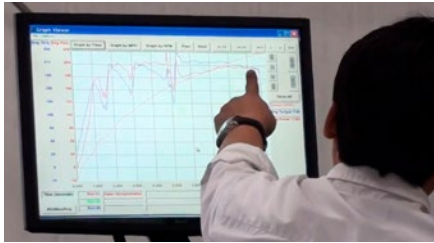
- Linux powered 4U industrial rack mount chassis with powerful micro PC
- Mustang's GEN4 DAC32 32 bit digital controller
- Remote camera kit - auto run record with your watermark
- Wi-fi OBDII
- Powerful data graphing utilities
- Multiple run graph overlay
- Full database facility for storage/retrieval of test info
- Export data to your favorite programs
- Customizable test reports with your company logo
- Easily export graphs as .jpg files



Visit MustangDyne.com for more information about *Hole Shot* control software.

Installation Assistance & Operator Training!

Mustang Dynamometer has a team of highly-skilled technicians on staff to assist you with your dyno installation. Once your dyno arrives at your facility, one of our highly trained experts will be on



site for a full two days to assist you every step of the way to ensure that your dyno is installed properly, is running flawlessly, and your staff is familiar with its operation. This service is available worldwide and is your assurance of a flawless and quick installation.



While on-site for installation assistance, a Mustang technician will train your entire staff on the proper use of the dynamometer hardware and software. Mustang factory technicians know the dyno systems inside and out, and will fully train your staff, performing hands-on training, including vehicle set-up and

restraint, Hole Shot Software instruction, proper testing methods, troubleshooting, sensor and data acquisition usage, and tips on getting the most from your dyno.

Research and Development

Mustang Dynamometer continues to allocate a substantial amount of capital into Research and Development. This has allowed Mustang to lead the pack in new innovations and introduce new products to the market place in a timely fashion.

In today's dynamic environment, technology continues to change and Mustang is at the forefront of developing new technology and integrating this new technology into the testing world. This significant Research and Development budget has allowed Mustang to experience growth through these improvements and the development of new products and services. Our Research and Development efforts have lead to improved productivity and with this improved productivity we have been able to pass along savings to our customers. We make all attempts to anticipate customer demands and invest heavily for innovative solutions which always keeps Mustang ahead of the curve.

Want to see how a dyno is made?

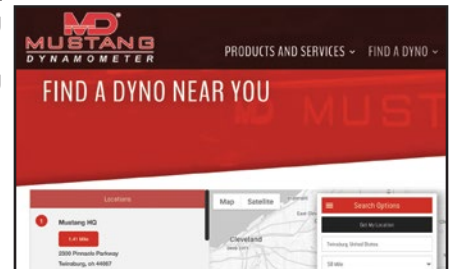
We're proud of what we do, so we love to show off. We're so convinced that when you see the quality of our products and the way they are made, with all-American ingenuity, you'll be impressed. So much so, that you'll probably want to buy a dyno. To cover your travel expenses, we'll give you \$1,000.00 off the cost of a new chassis dynamometer.

Tours are 3 hours long, and are booked on weekdays, either 9:00 am to 12:00 noon, or 2:00 pm to 5:00 pm. Saturday tours are by special requests only. Email sales@mustangdyne.com for further details. For available/open dates, visit our website and fill out the request form.

- Quick visit with sales, operations, engineering and design departments
- Tour of Mustang's 100,000 square feet of manufacturing floor space
- See complete engineering, balancing, metal fabricating, machining, painting, assembly and testing operations
- Witness a dyno pull of a company car
- Watch a demonstration of controls software.

Marketing Support

Every customer who purchases a Mustang dyno has all the marketing support of Mustang Dynamometer behind them. From banners, promotional items, and social media "shout outs", Mustang helps each of their customers. Development Department. When a new dyno is shipped to a customer, that location is added to the dyno-locator map on the Mustang website, which is a great marketing tool. This map is the third most visited page on Mustang's website, and key in getting potential customers to find your location. If you are a new customer to the Mustang family, or interested in purchasing a dyno and have questions, feel free to contact Mustang Dynamometer.



GIAC

“Tuning is an art. To tune for optimal performance is to tune for a careful combination of speed, strength and agility that varies as driver tastes vary. GIAC exists to tune cars for the way people like to drive. The MD-AWD-500 may be the finest tuning dynamometer on the market today, with the ability to plot power as load is applied to the wheels.”

Garrett Lim, President
Garrett Integrated Automotive Corp. (GIAC)

JP Euro

In Garland Texas, JP Euro recently purchased a movable base, below-ground, MD-AWD-800-BG dyno and has this to say about it: “Big shout out to team Mustang dyno! These guys are second to none! Don, Mike and the entire crew. If you are in doubt (about) writing a 100K check. DON'T. Mustang Dyno buy Once.. Cry Once!!!!!”

McClaren Phan
Owner
JP Euro



S3 Stout Speed Solutions

“We love our Mustang MD-1100-SE dyno. We use it often, and it has helped us with promoting our place. It's reliable, consistent, and has been a great asset. It's been an investment worth having. It's been a selling feature for our shop. And the Hole Shot software is easy to set the load, run quarter mile drag tests. And we keep a score of who holds the highest horsepower on record for our dyno. The customer service has been great. If there's any problems, we give Mustang a call and we figure it out and get it running as good as new. I can't say enough how tremendous it has been to own a Mustang dyno.”

Brian Stout, Senior
Stout Speed Solution



Area1320

"We have had our Mustang Dynamometer for 6+years. In that time we have racked up almost 55,000 miles on it. Let's just say we use it a lot. We may not post every car on the dyno but we sure use the hell out of it. And its treated us great because we maintain it religiously. Great product, great people, great company to deal with."

Area1320
Nazareth, PA
Area1320.com



MustangDyne.com

Buschur Racing, Inc.

"I've been in business for 19 years racing and tuning turbocharged 4 cylinders. In this time we've attempted to tune on other dyno's and even owned another brand. After learning that our time spent on these other dynos was worthless when we'd get to the track we decided to try the Mustang Dyno. After a lot of looking around we decided on the MD AWD 500SE dyno. I've never looked back since. It has been dead reliable for the last 3 years with not a single problem. We now tune every single car we build on the dyno and find no need for street tuning. When the cars hit the race track they are tuned correctly. Instead of spending time doing further tuning like we had to do in the past, now we can just concentrate on setting more records."

David Buschur
President
Buschur Racing, Inc.

23

AEM

"We use our dyno daily and it has performed very well and has been very reliable. Most importantly, we have found that Mustang has been an excellent partner with respect to helping us with the servicing of the dynamometer. The customer service group has been VERY responsive and helpful whenever we have needed help. With the shift in the market to more R&D of performance EVs, which output big torque at low RPM, we had Mustang upgrade our MD-1750 dyno with a second power absorber unit (PAU) and both new hardware and software to the controls system. Now our dyno can handle max speed of 250 mph, and a HP measurement rating of 3,500-hp."

John P. Concialdi
AEM



(330) 963-5400



Mustang Dynamometer Core Values

Our mission is to achieve the highest possible level of customer satisfaction by providing innovative technical solutions and product designs and by striving to achieve perfection in product quality, delivery and service. At Mustang, our customers are our highest priority – We do everything in our power to satisfy our customers. Our entire organization understands that the customer comes first and nothing else is more important. Our goal is to help our customers gain market share and competitive advantage by supplying world-class products, cutting-edge technology and superior services through our dedication to the following guiding principles:

Mustang Dynamometer

2300 Pinnacle Parkway
Twinsburg, OH 44087
Phone: (330) 963-5400
Fax: (330) 425-3310
Email: Sales@MustangDyne.com

MustangDyne.com

Photography courtesy of
Mid Florida Dyno, Area1320, JP Euro,
Renn Sport Performance - RSP, S3 Stout Speed Solution,
EnginePlus Motorsports, Speed Society, Garrett Tuning,
and RE Performance & Tuning

© 2024 Mustang Dynamometer Mustang Dynamometer, PowerDyne and Hole Shot are trademarks or registered trademarks of Mustang Dynamometer

MDY-0014-C2_v8-0424