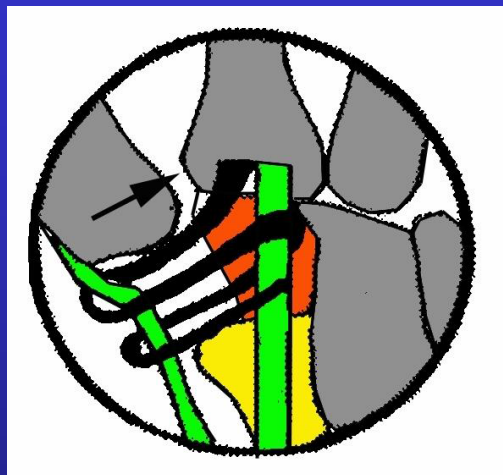


FCR Interposition Arthroplasty

Dr Stuart Myers



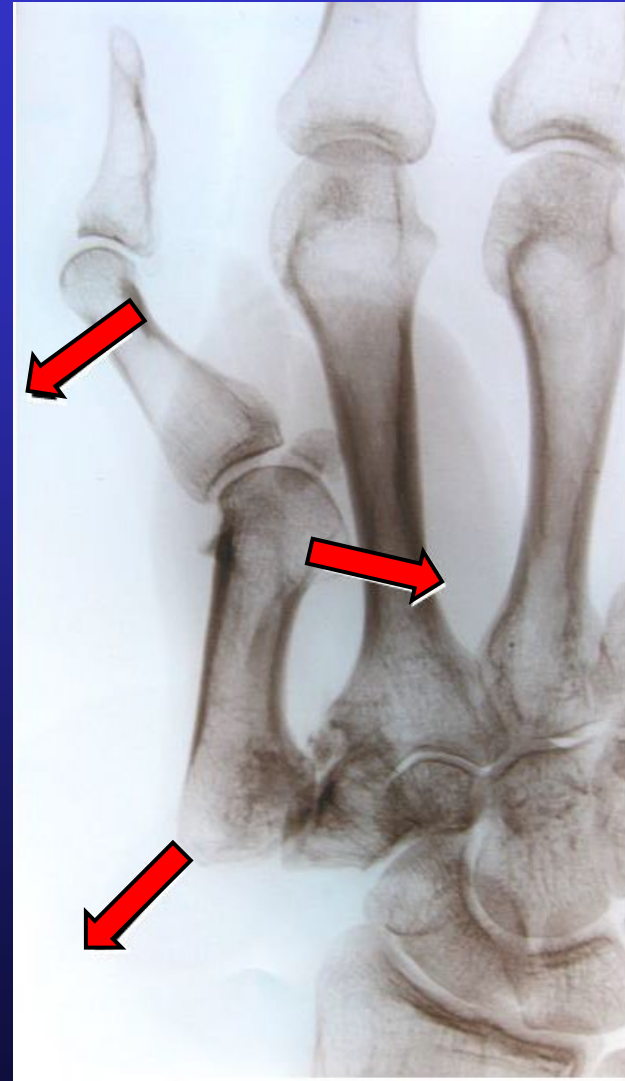
KAREENA
PRIVATE HOSPITAL

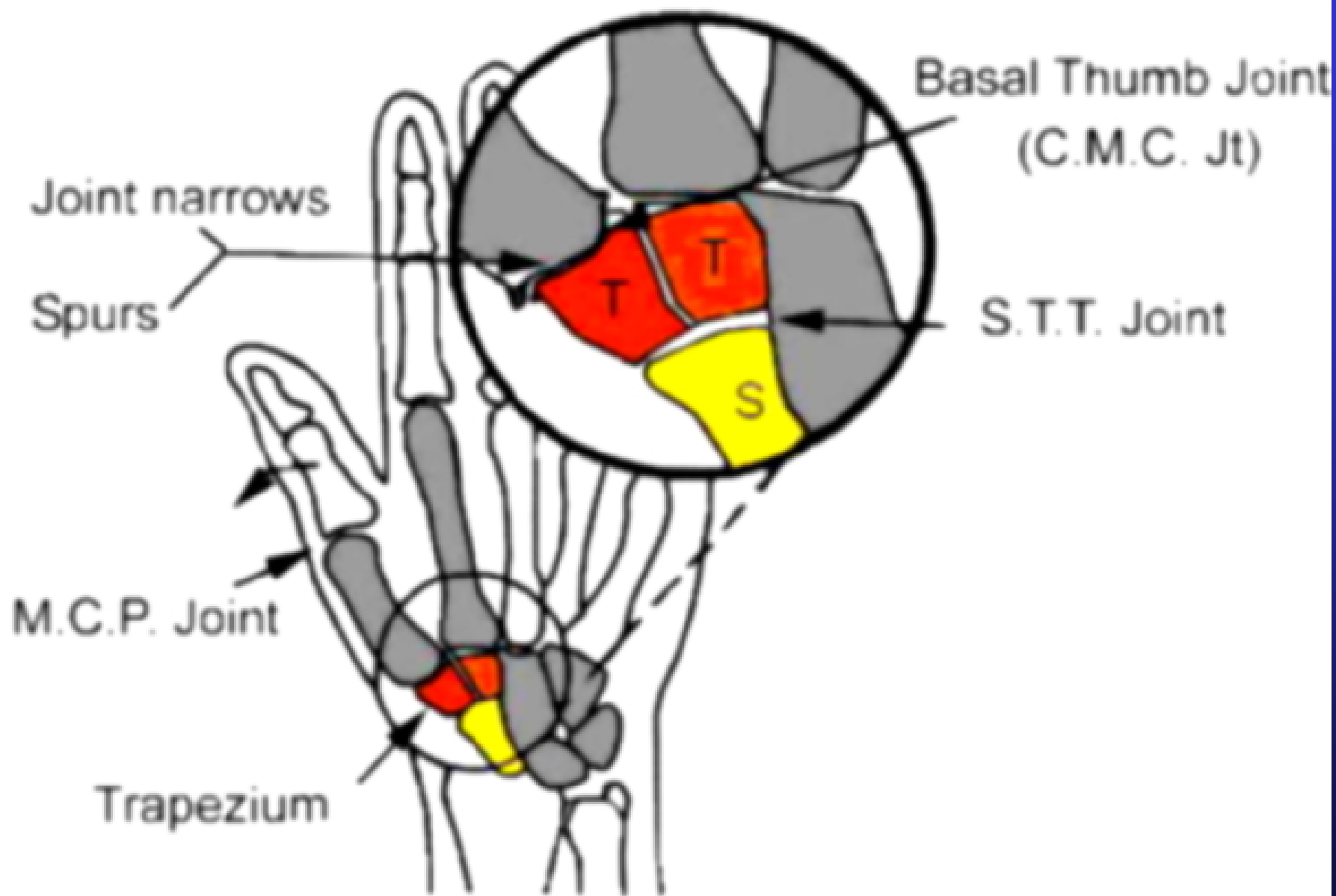
Orthopaedic Hand Surgeon,
Sydney Orthopaedic Specialists

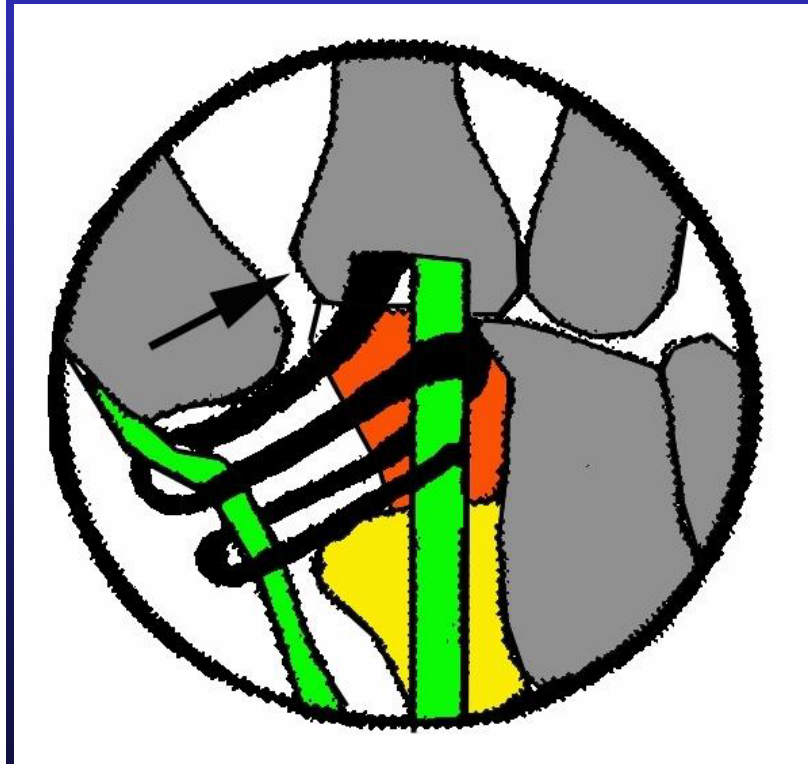
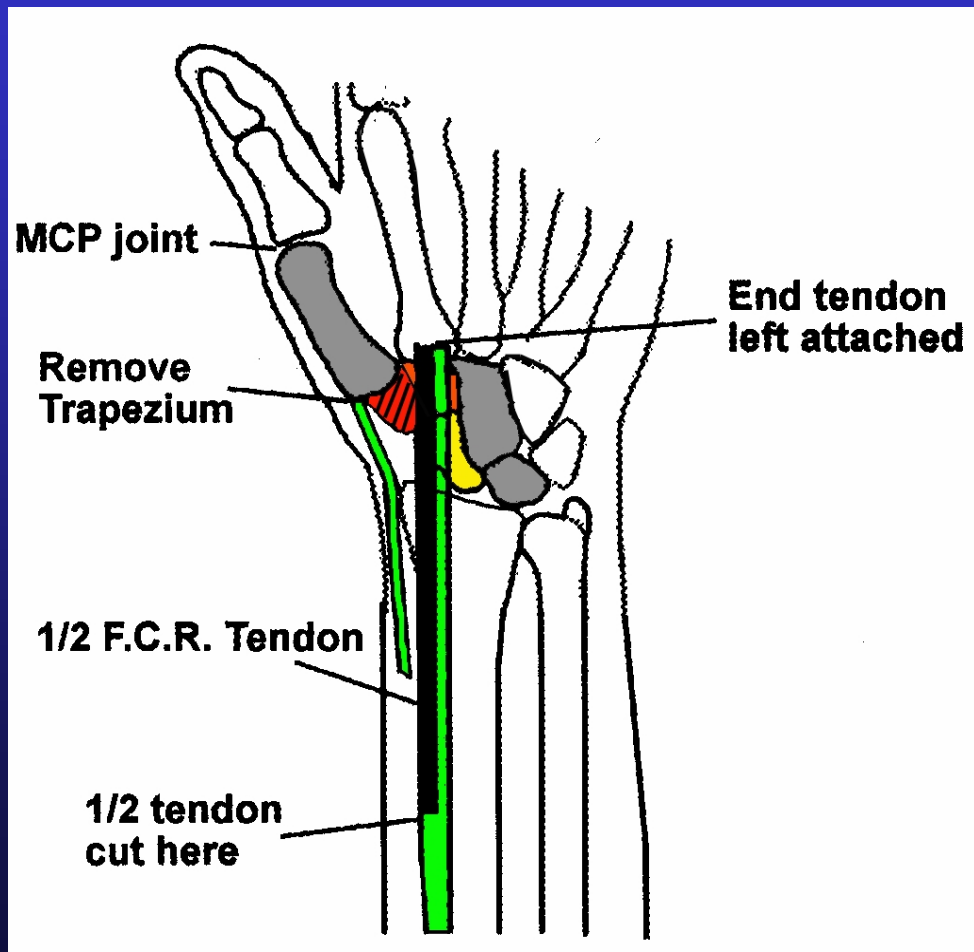
www.myhand.com.au



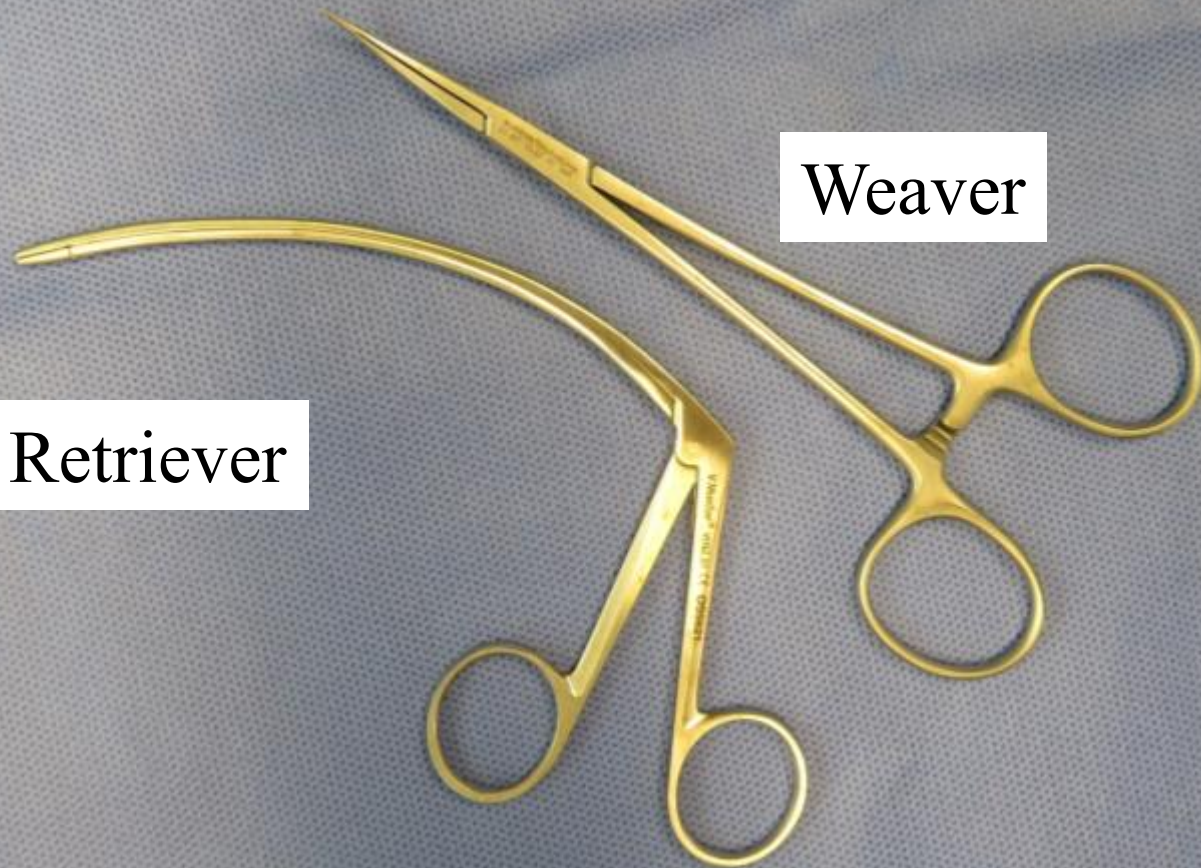
Typical Deformity







Instruments

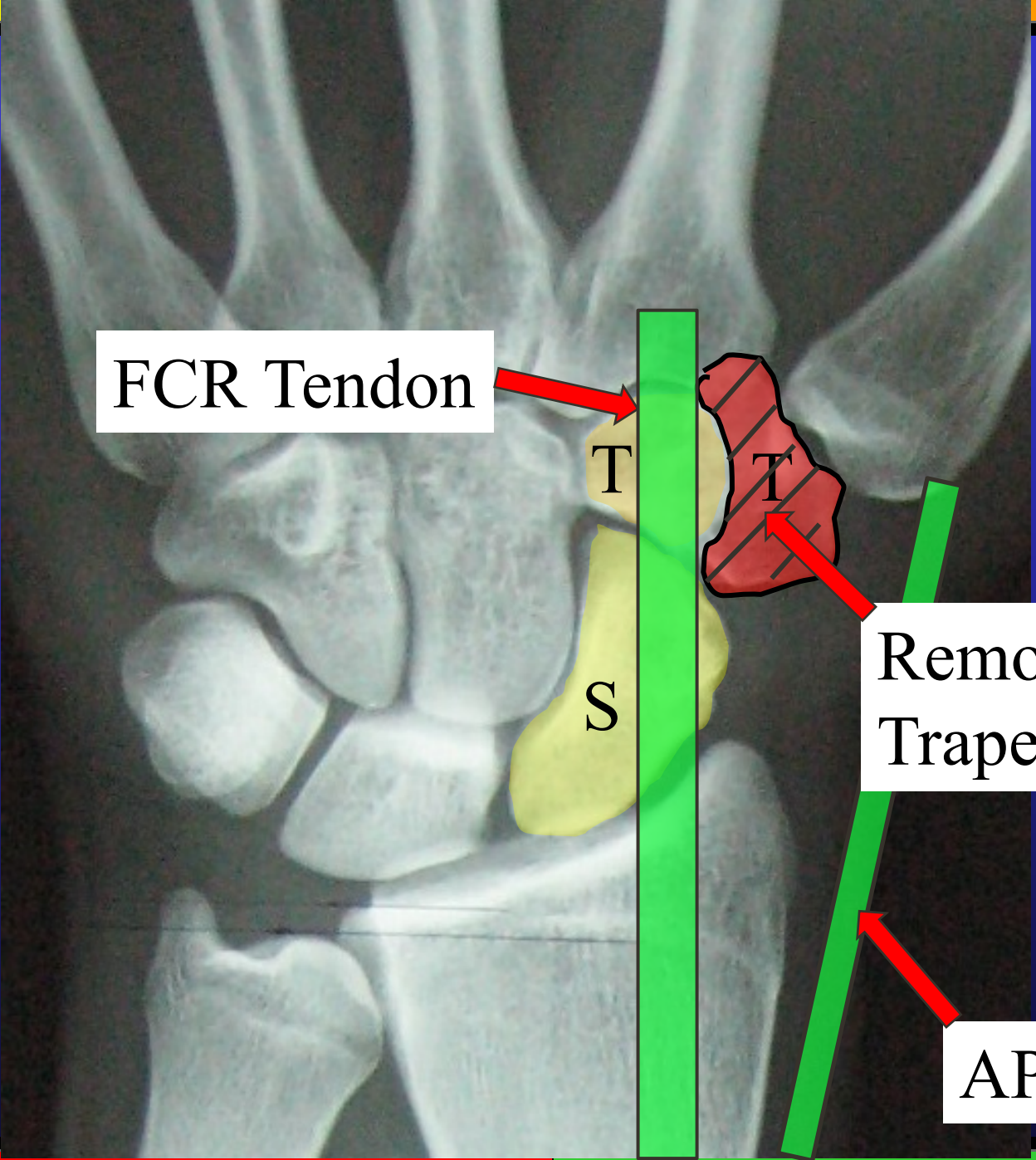


Weaver

Retriever

Carroll Tendon transfer instruments





FCR Tendon

T

S

T

Remove
Trapezium

APL Tendon

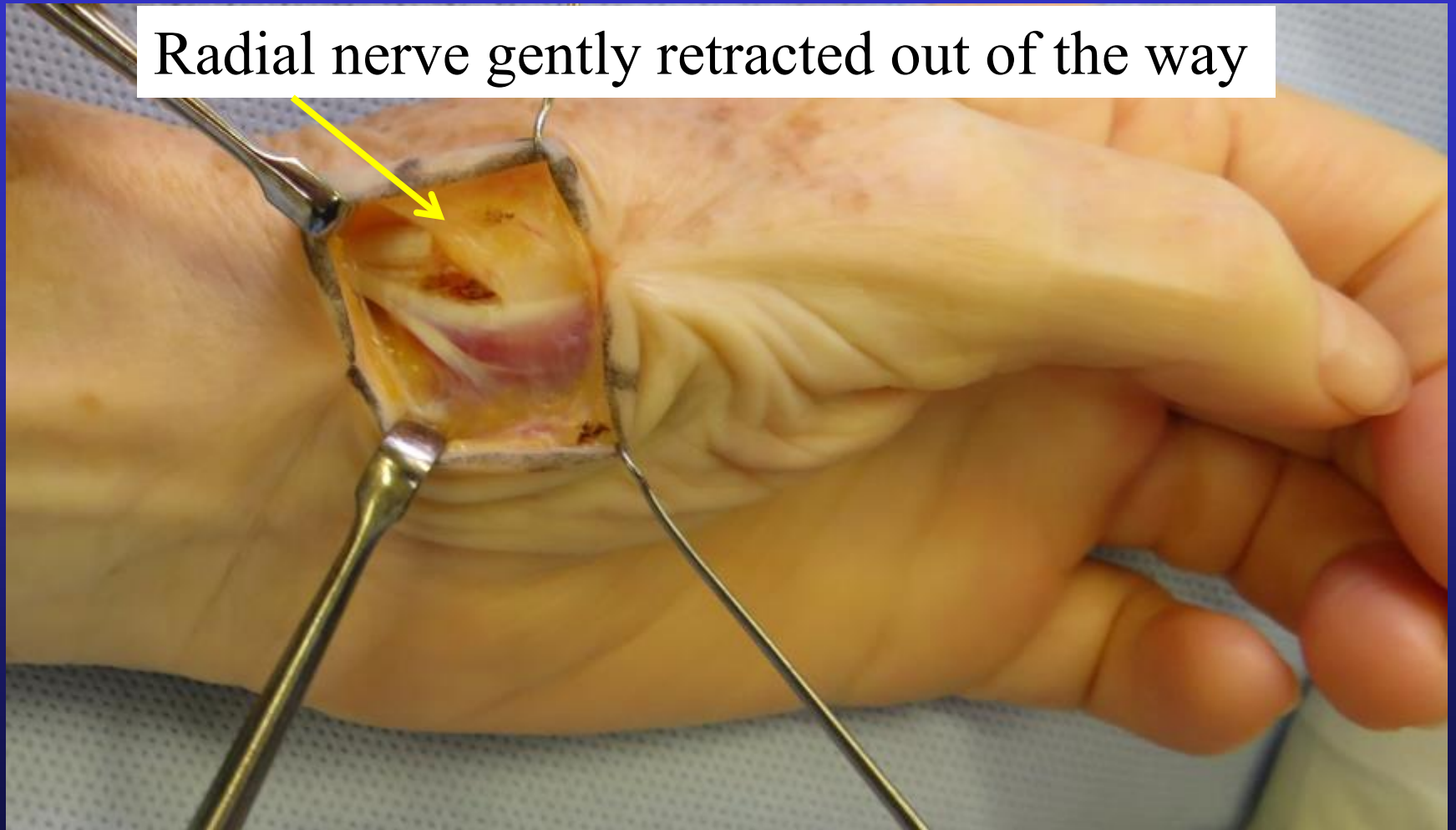
Incisions

Joint level



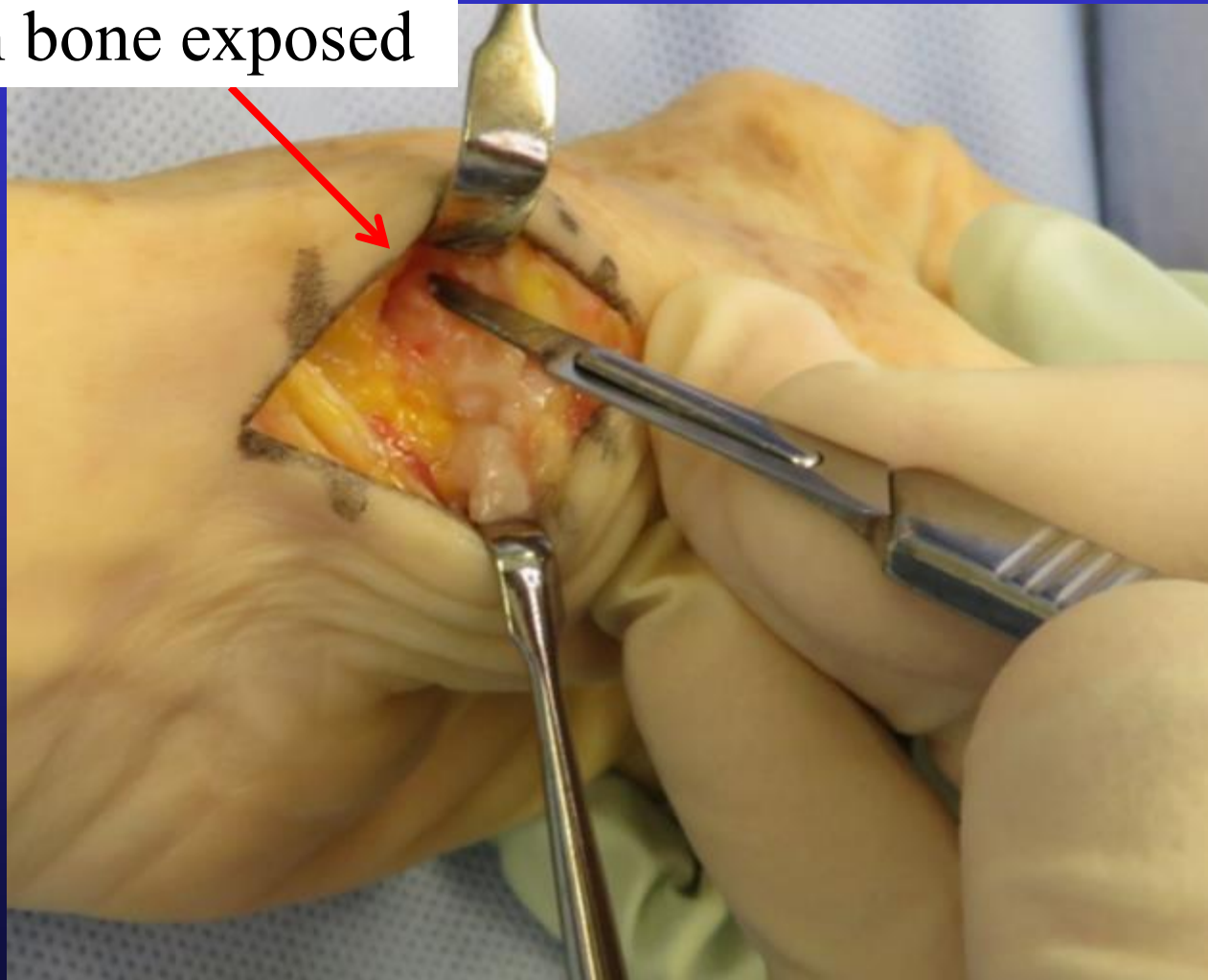
APL insertion variable

Radial nerve gently retracted out of the way



Trapezium resection

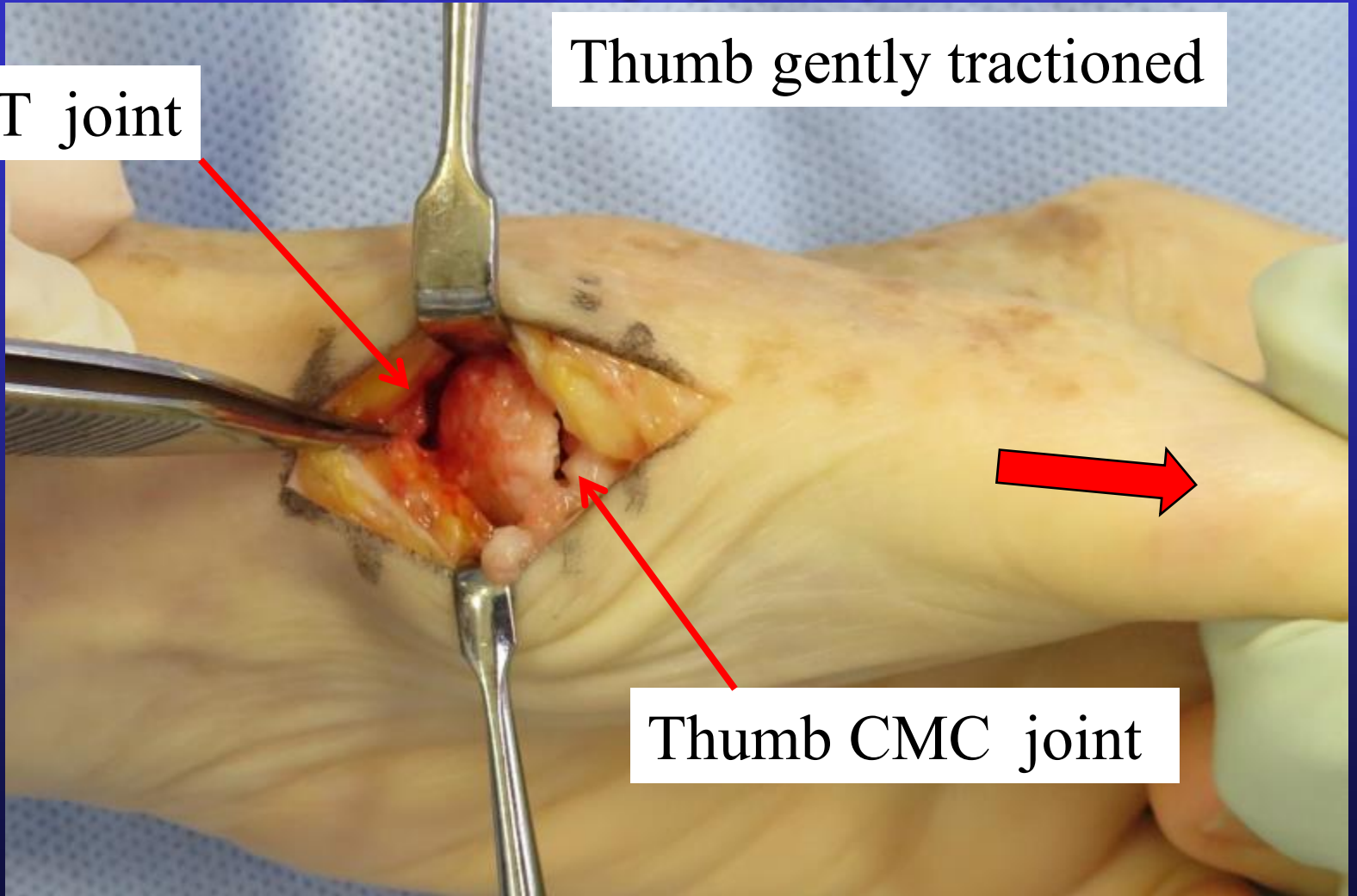
Trapezium bone exposed



STT Joint

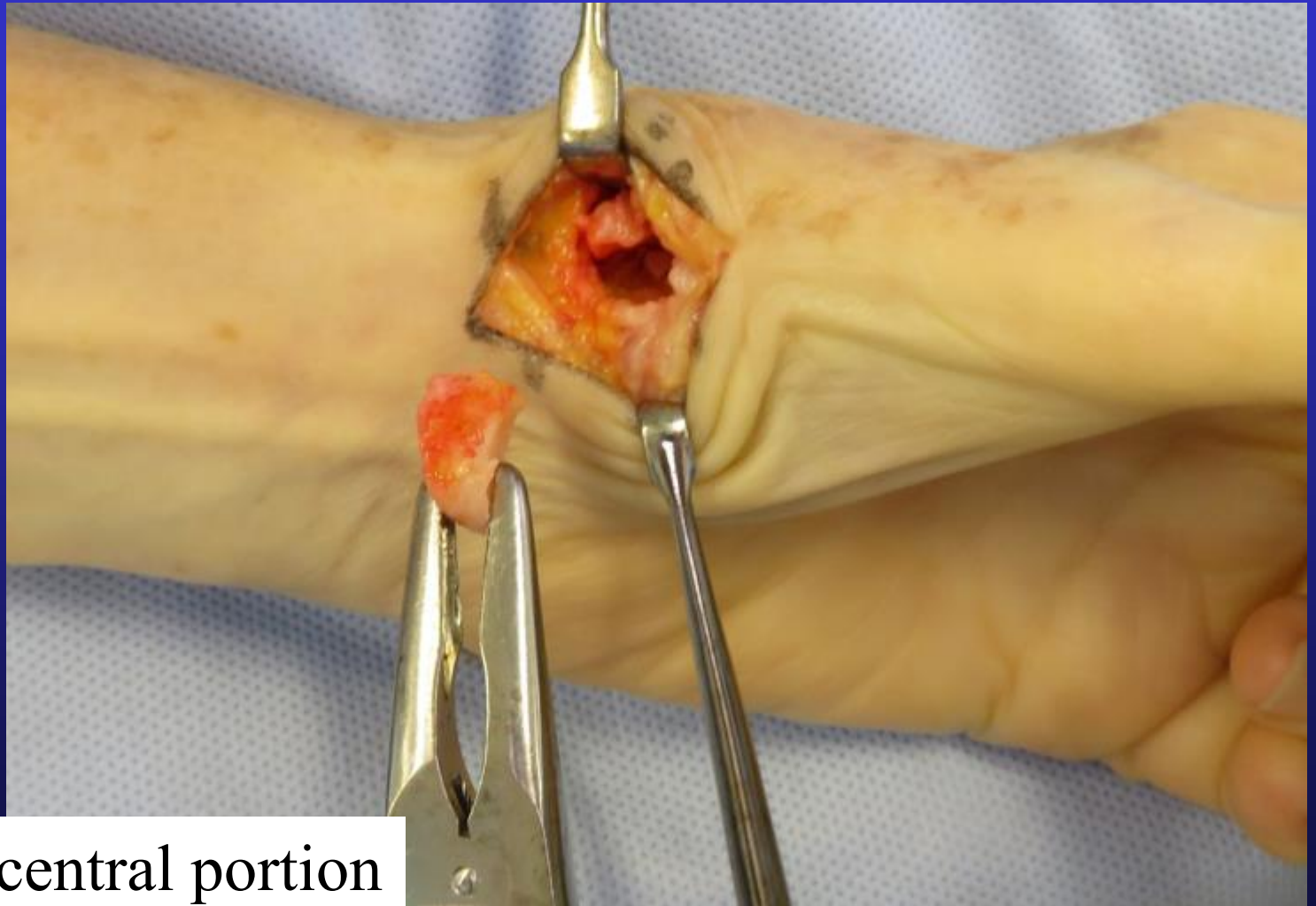
Thumb gently tractioned

STT joint



Thumb CMC joint

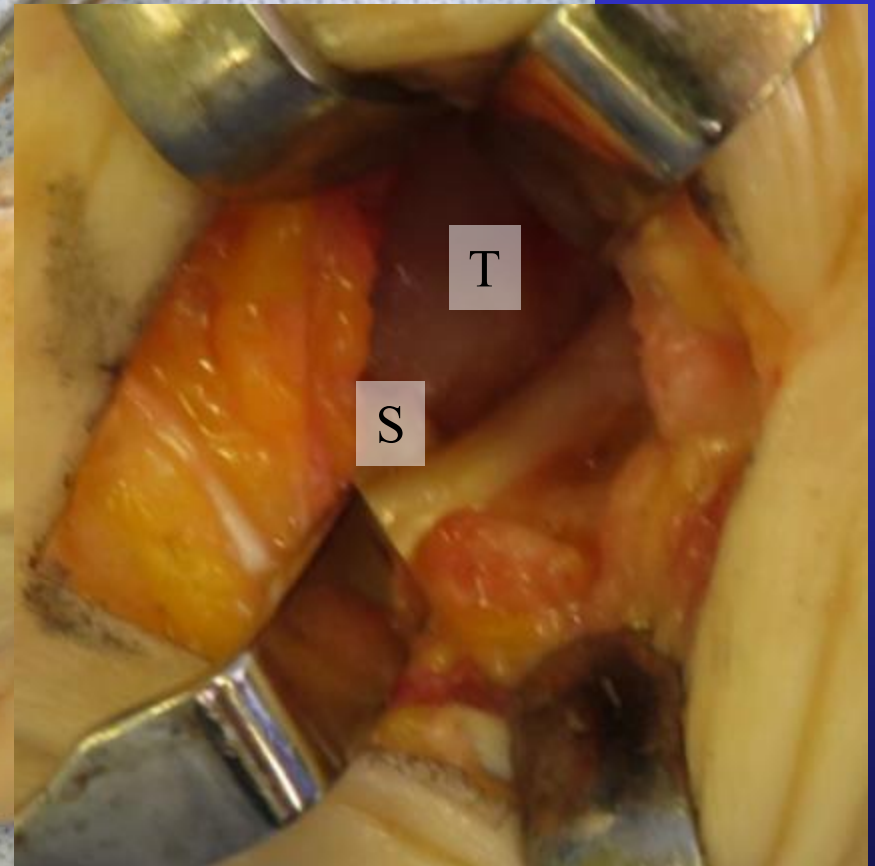
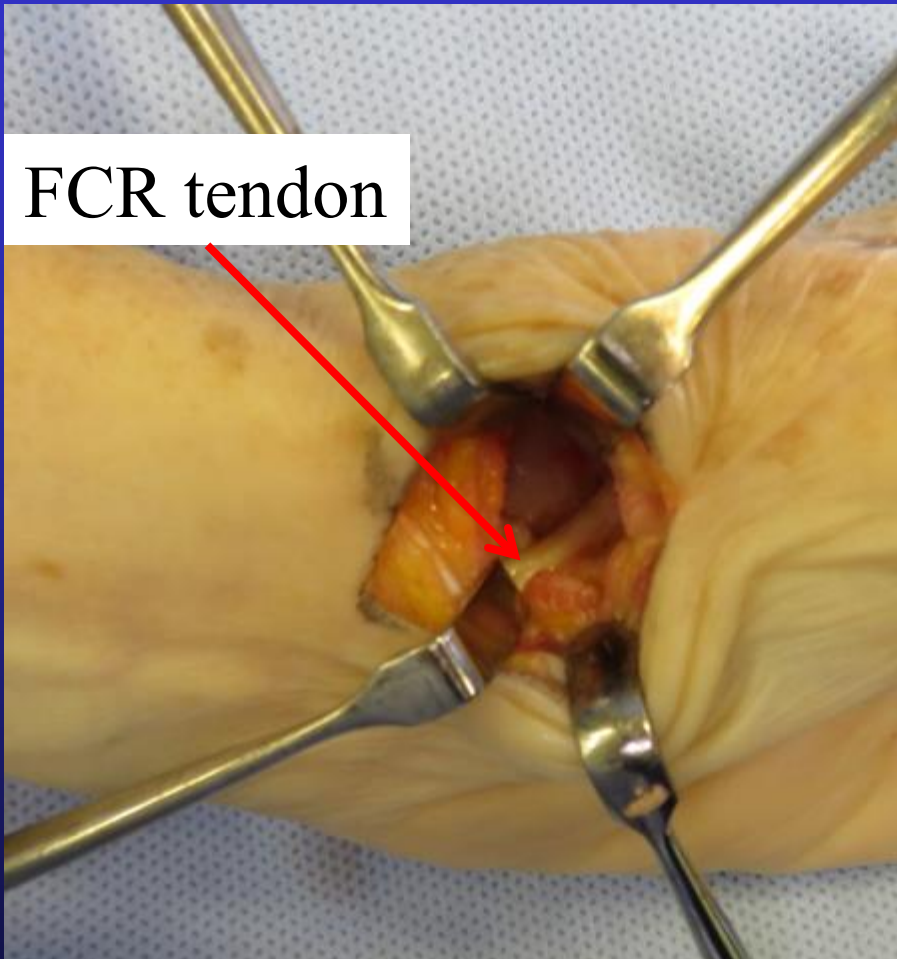
Trapezial Excision



Remove central portion

Trapezial Resection

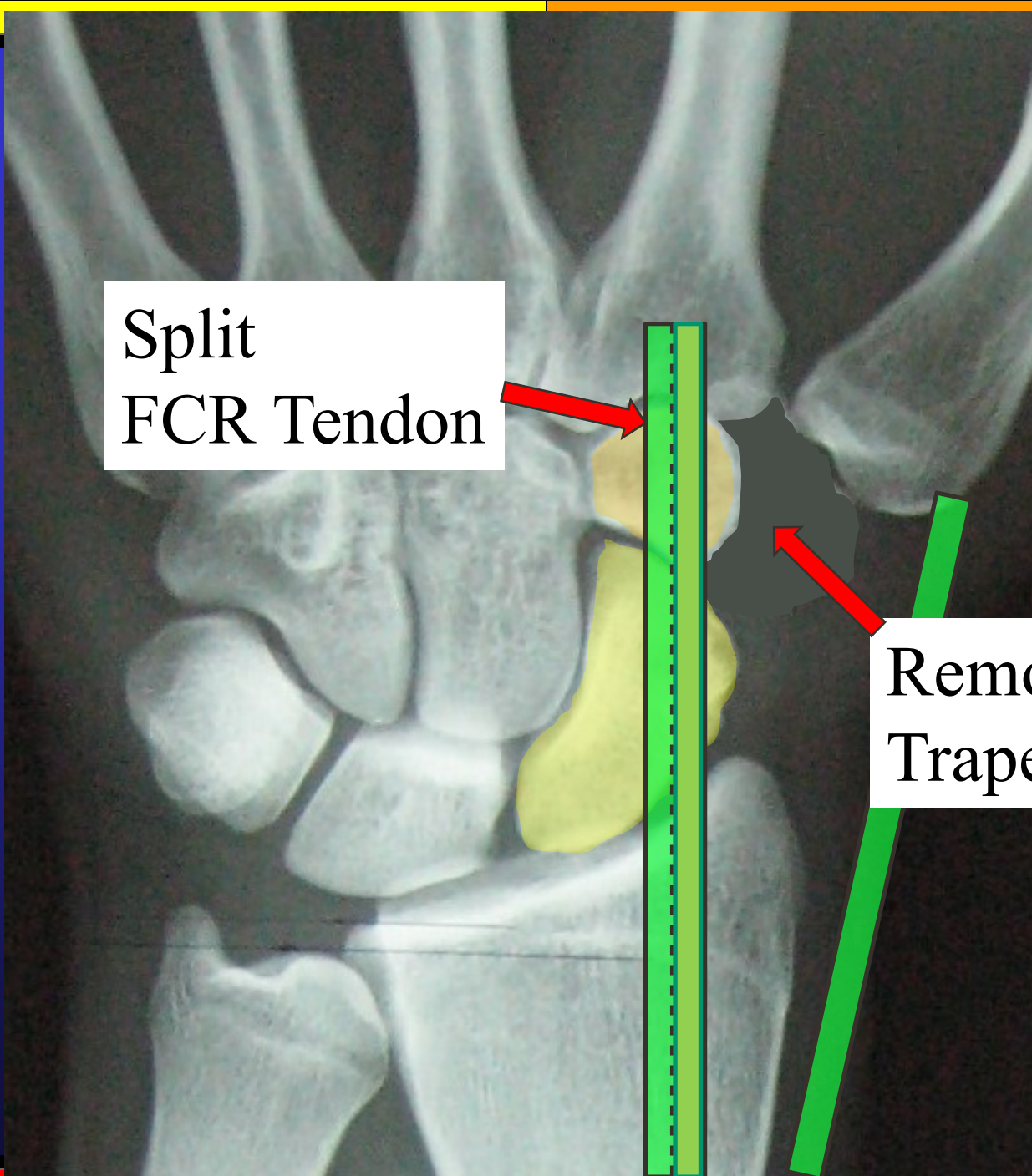
FCR tendon



Resection complete- Defect larger than expected

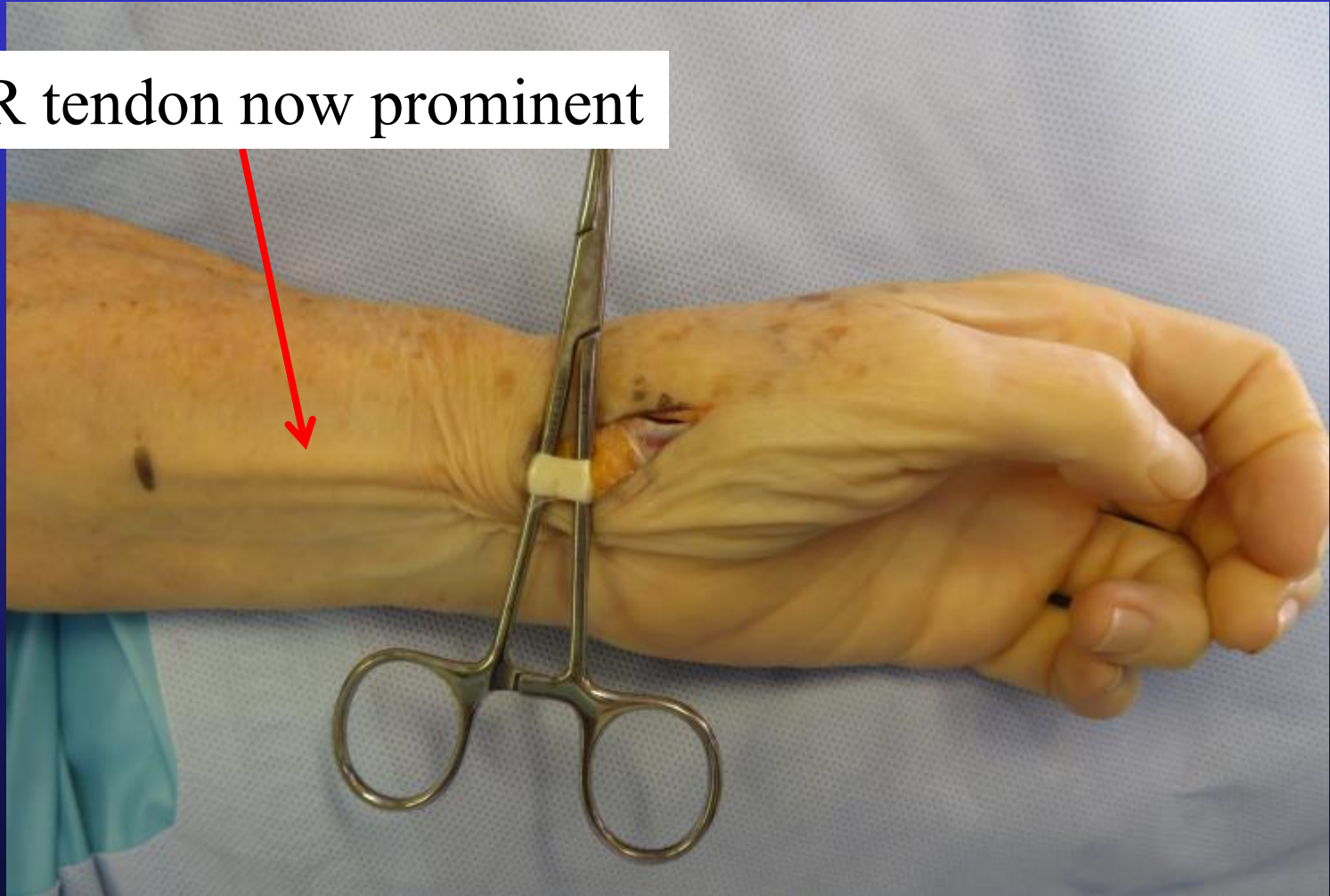
Split
FCR Tendon

Remove
Trapezium

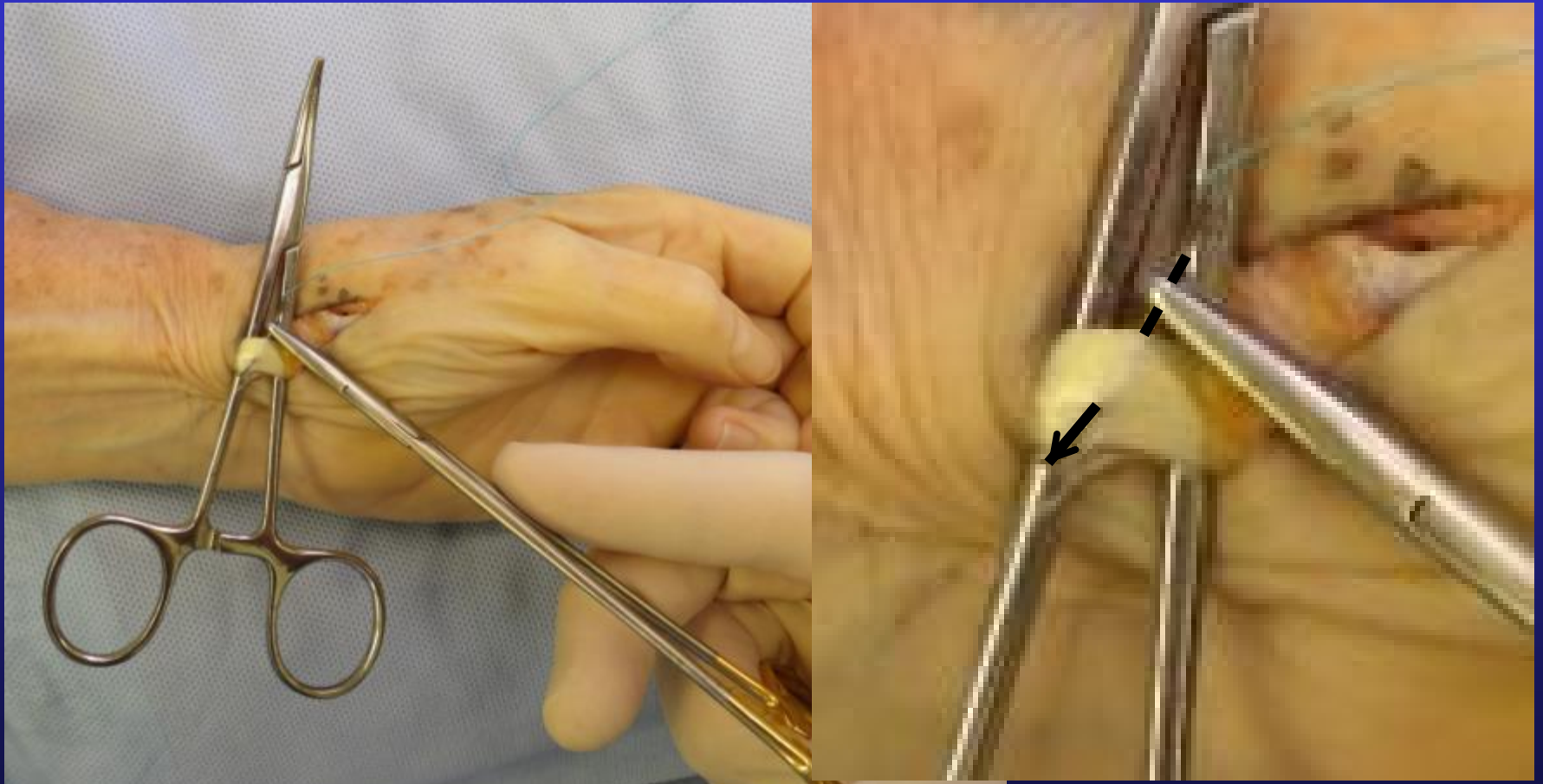


FCR tendon

FCR tendon now prominent



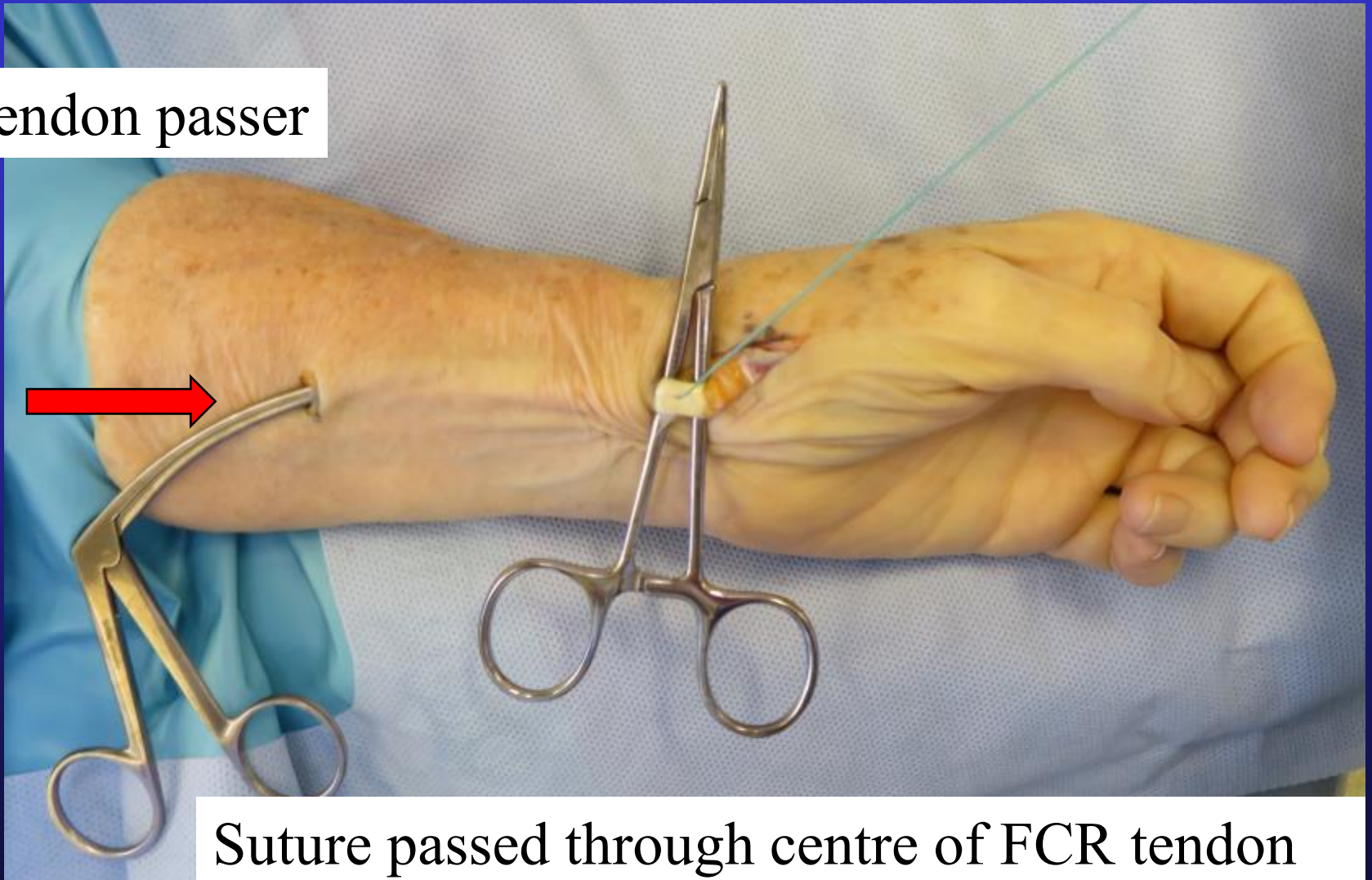
FCR tendon



Suture passed through $\frac{1}{2}$ tendon

FCR tendon

Tendon passer



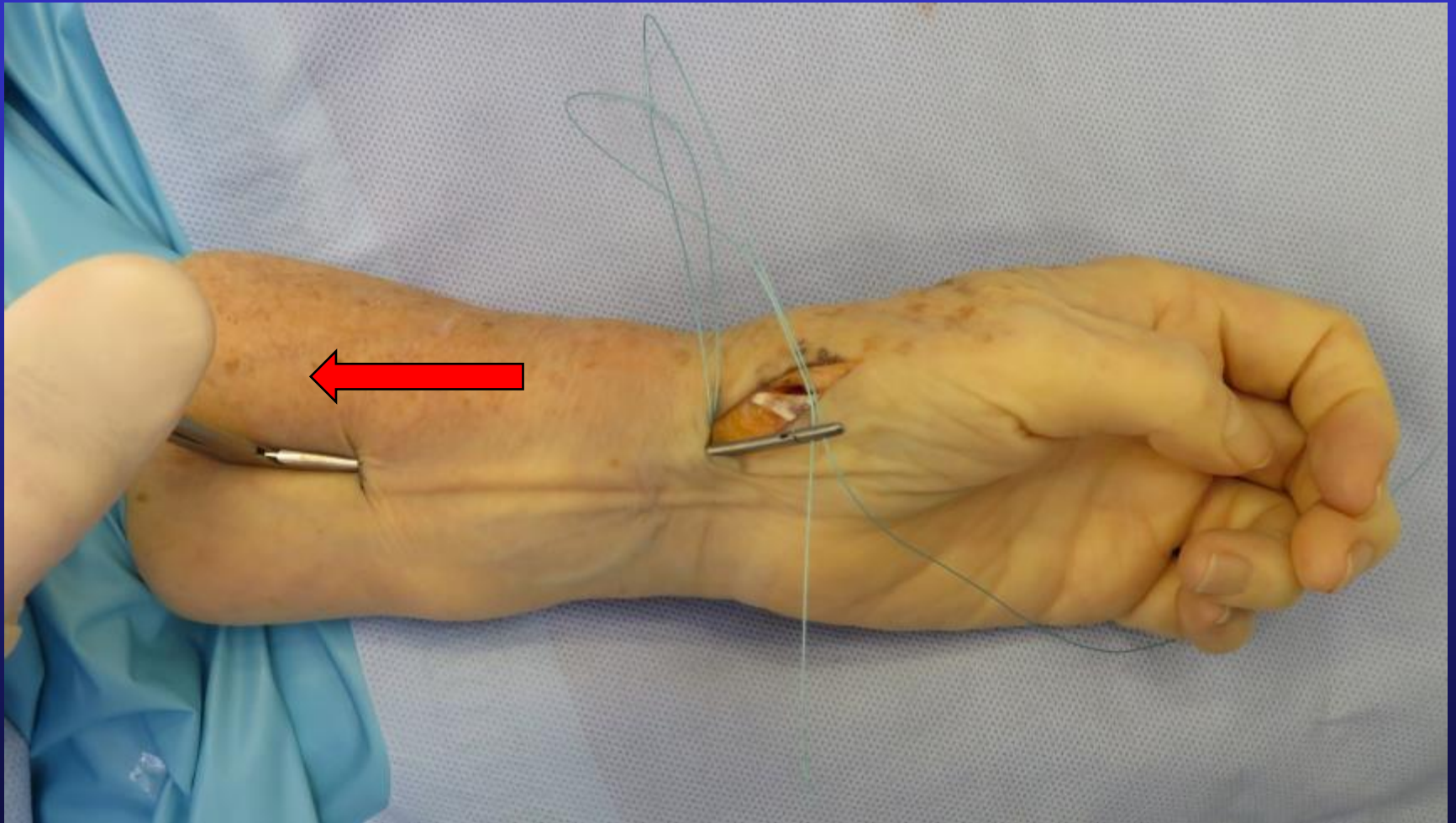
Suture passed through centre of FCR tendon

FCR tendon

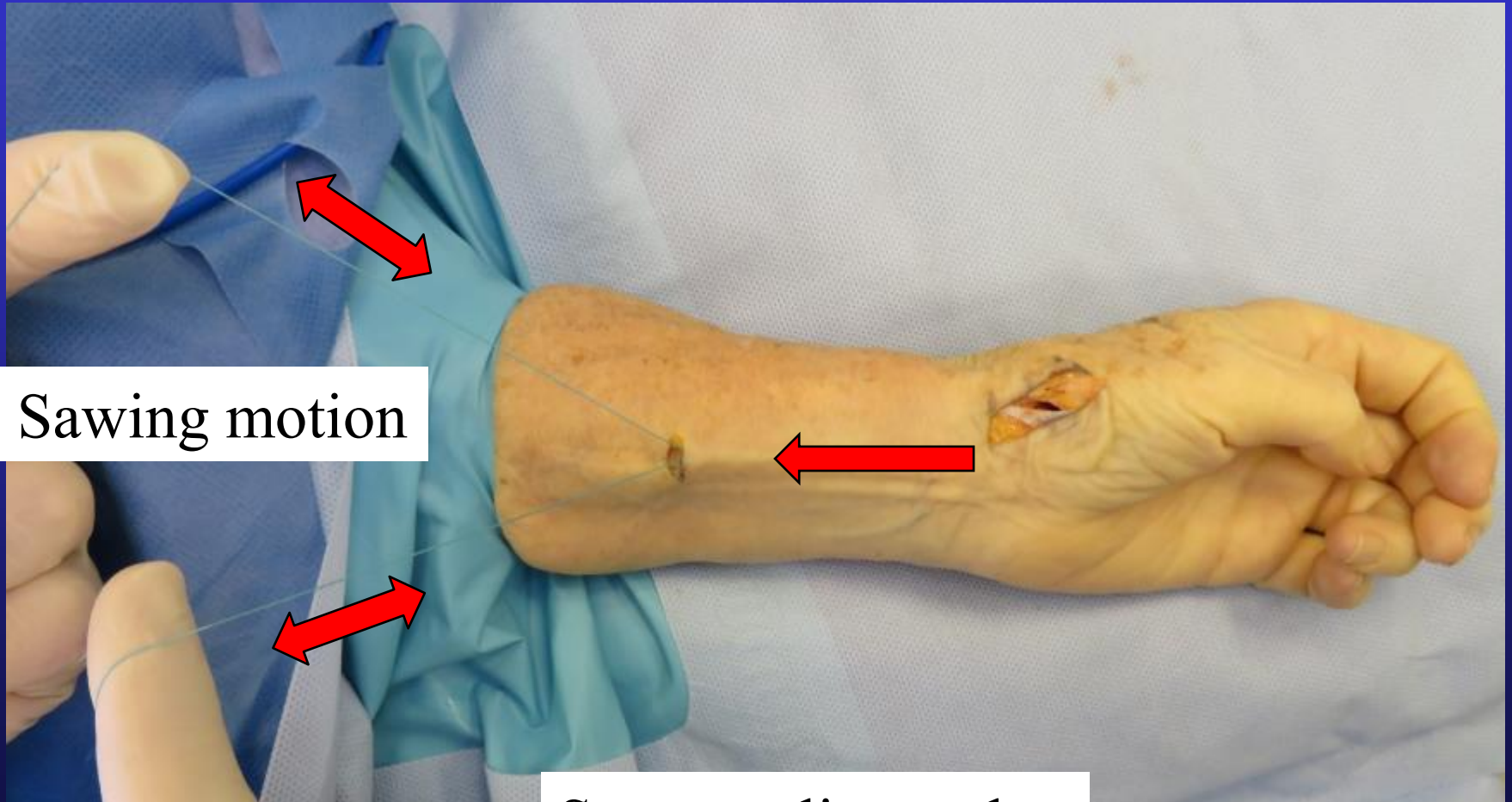
Tendon passer



FCR tendon



FCR tendon

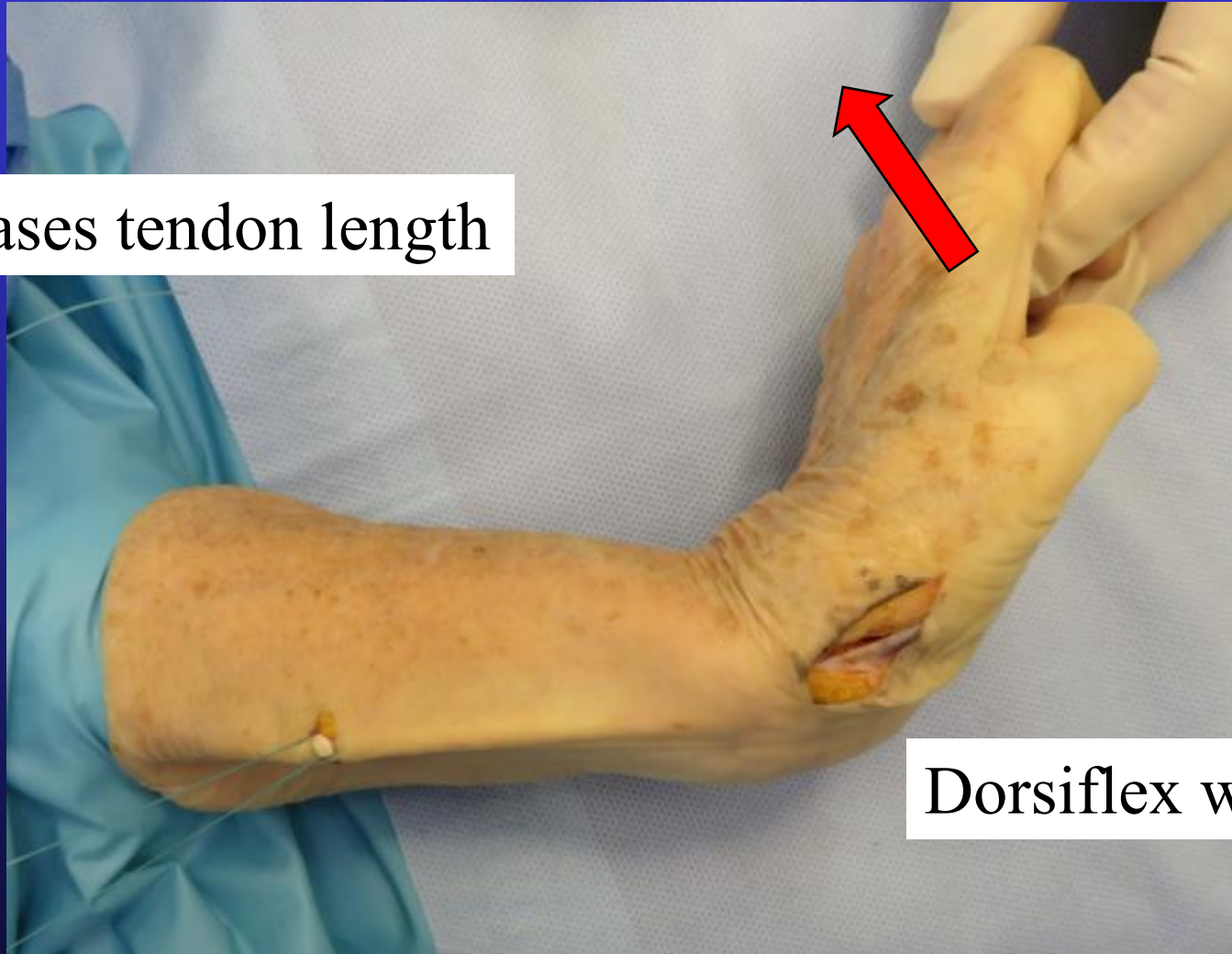


Sawing motion

Suture splits tendon

FCR tendon

Increases tendon length

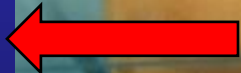


Dorsiflex wrist

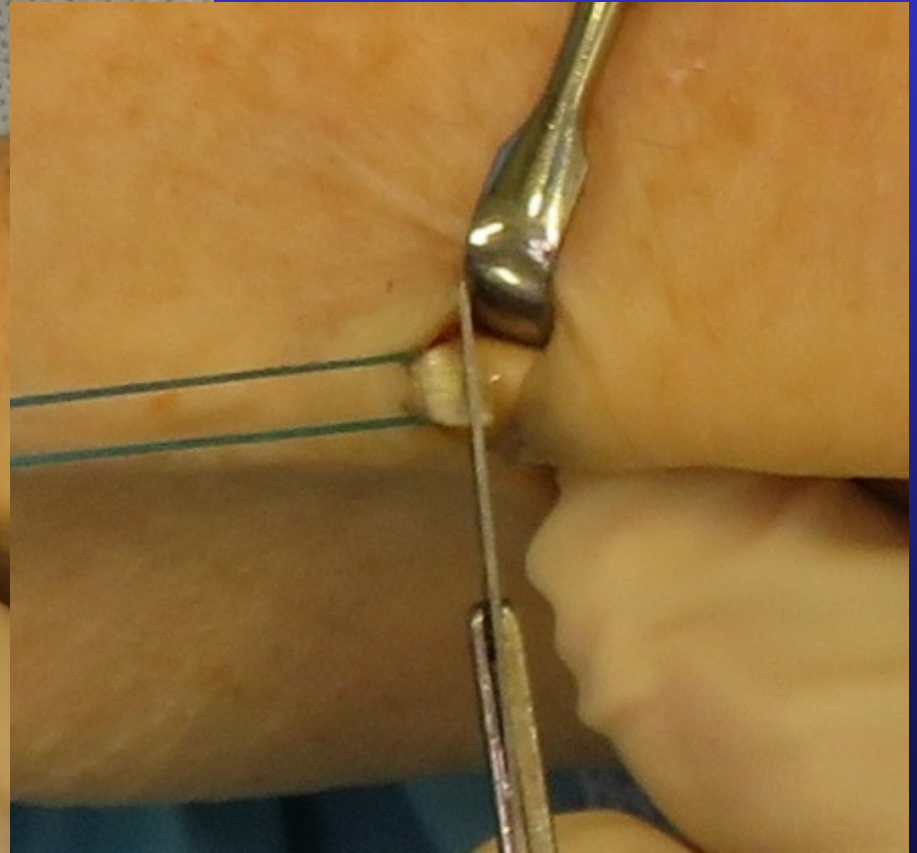
FCR tendon

Dorsiflex wrist

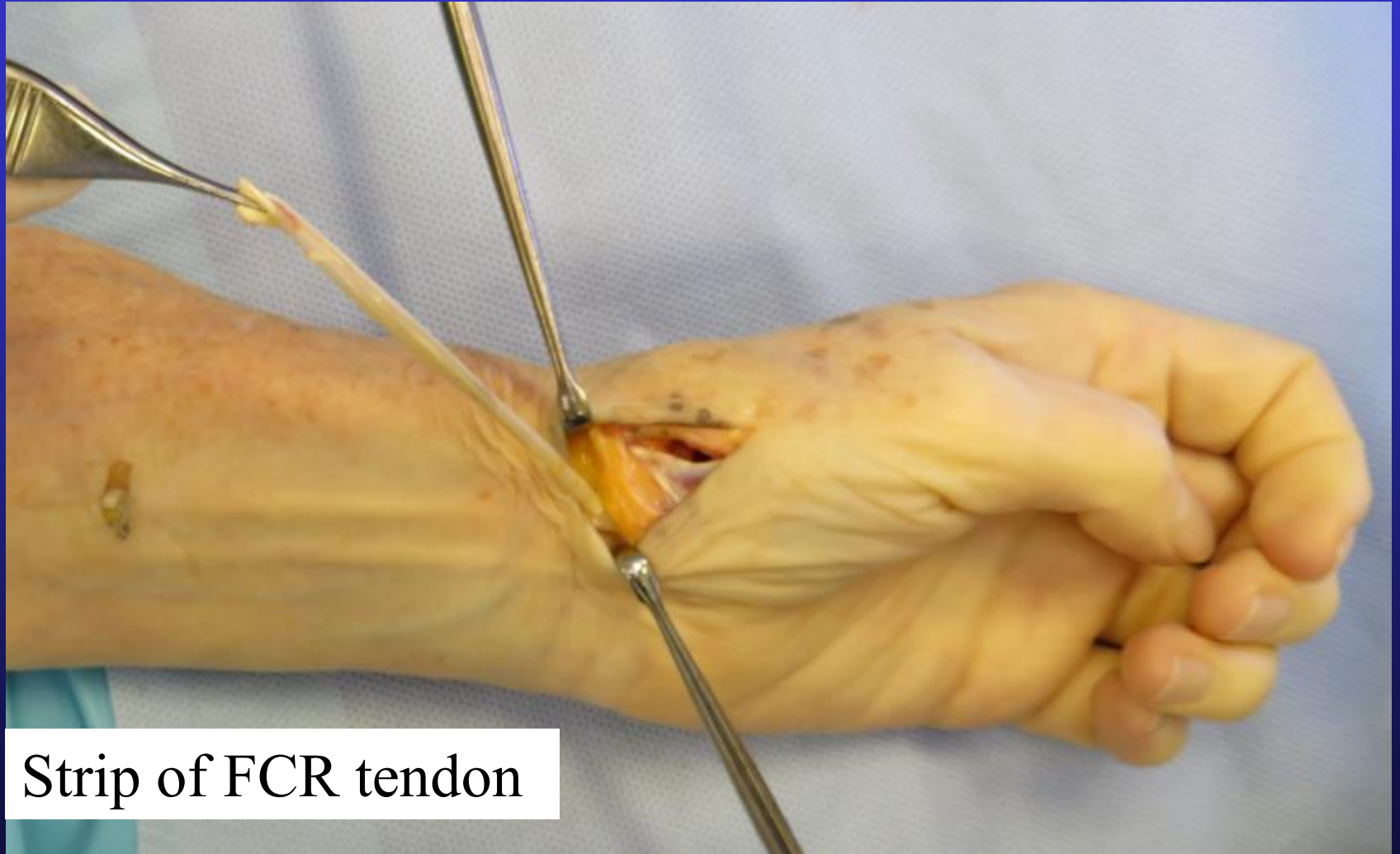
Tension on suture



Cut radial half tendon

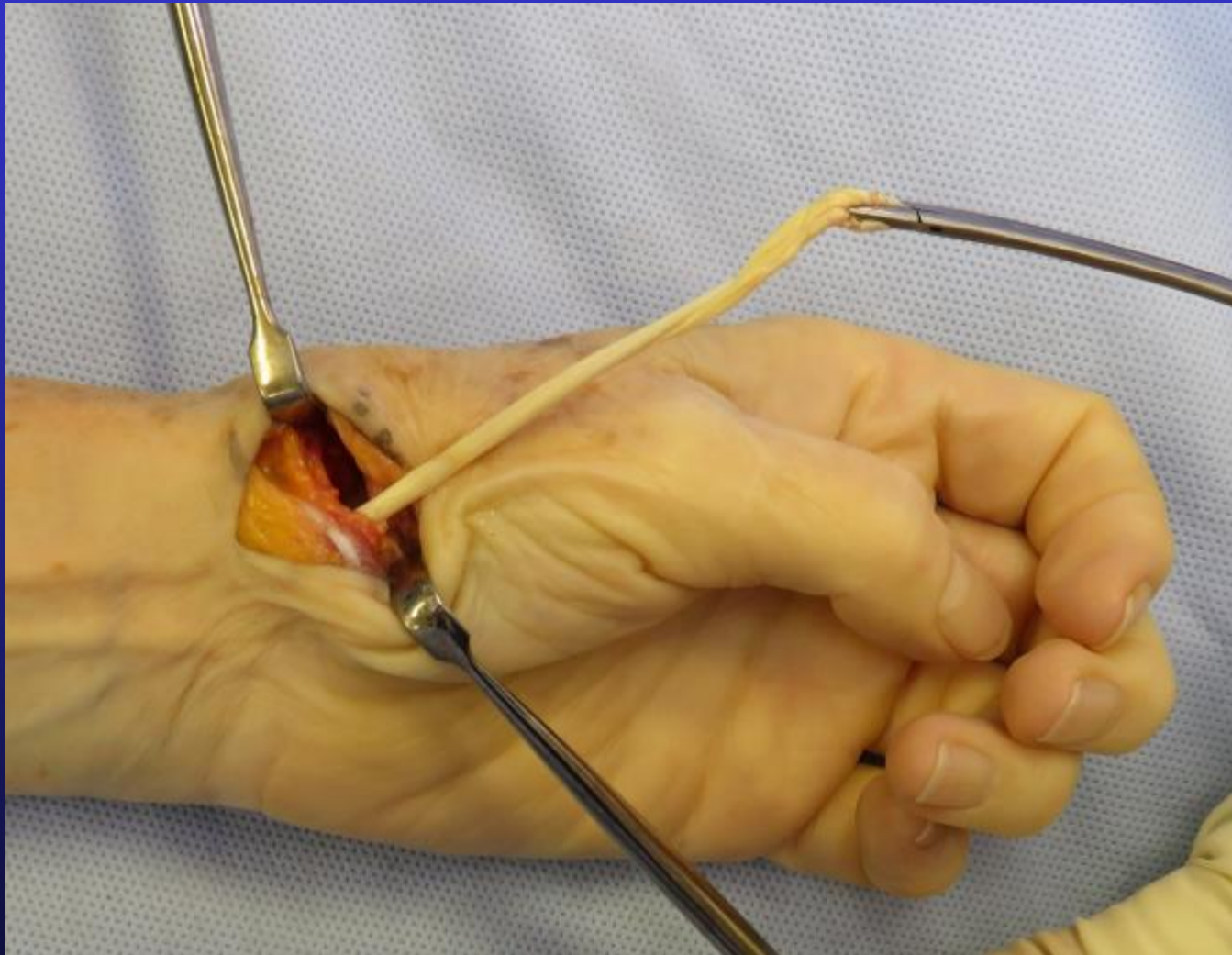


FCR tendon

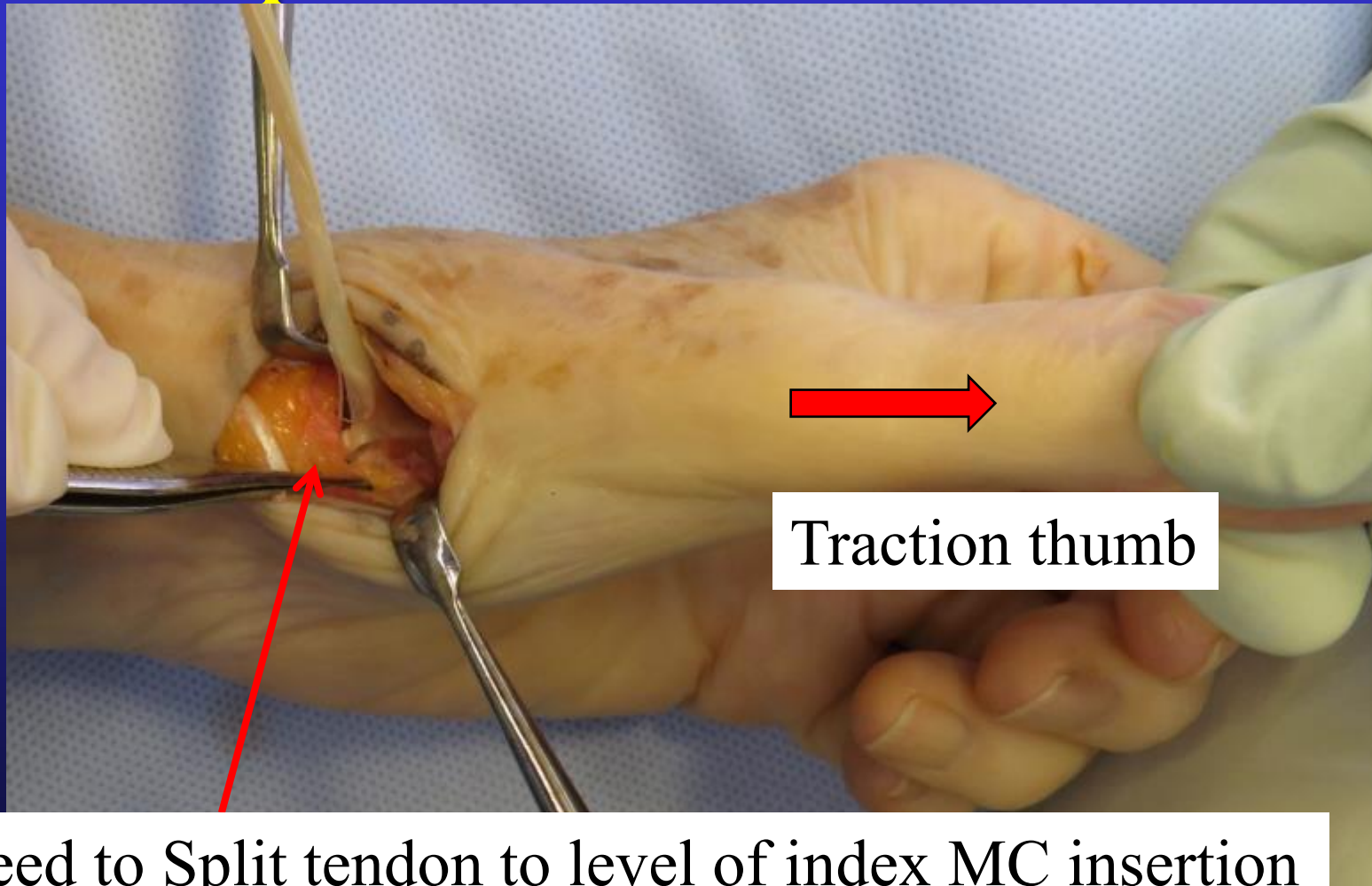


Strip of FCR tendon

Pass tendon into defect



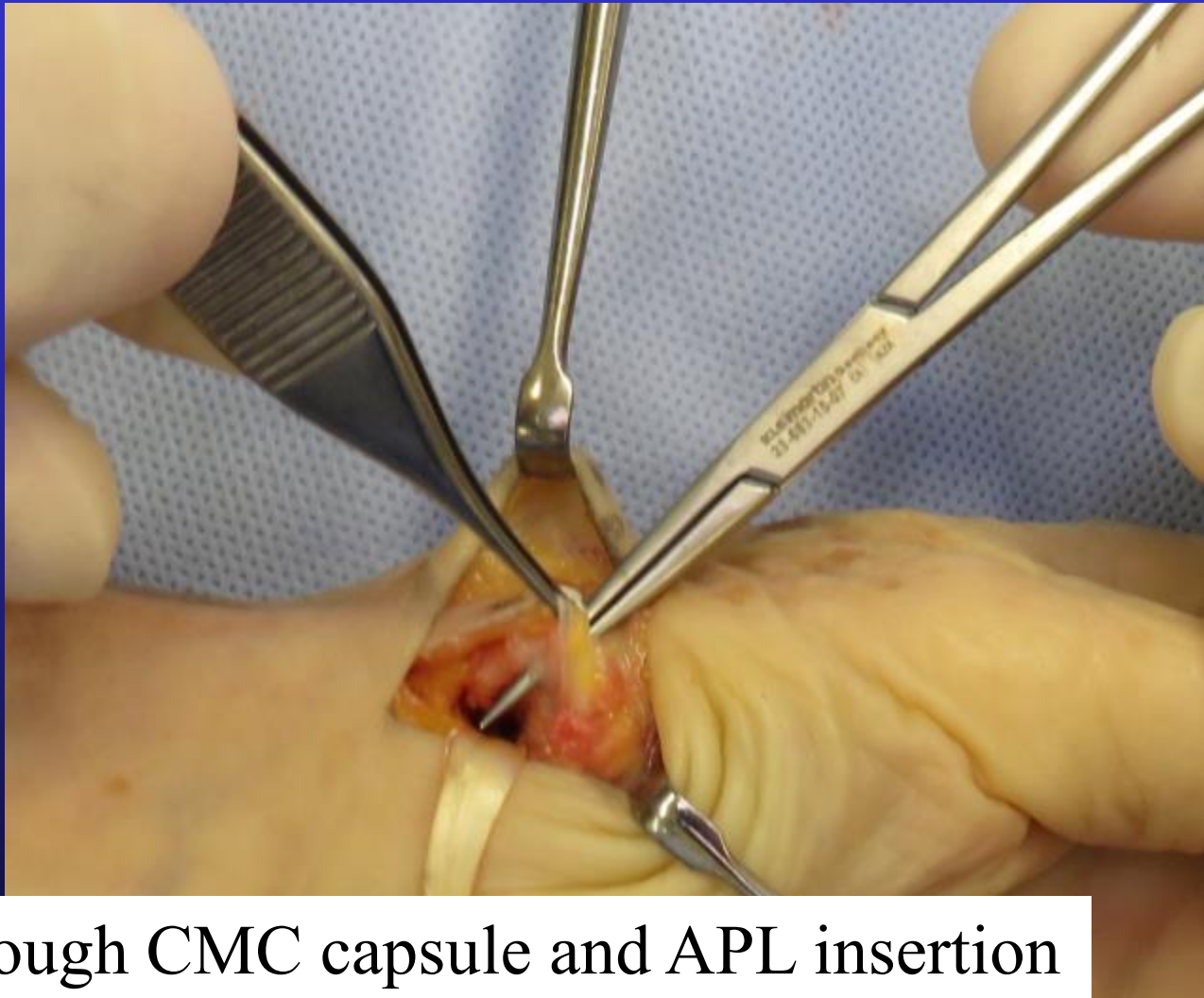
Split to Index MC



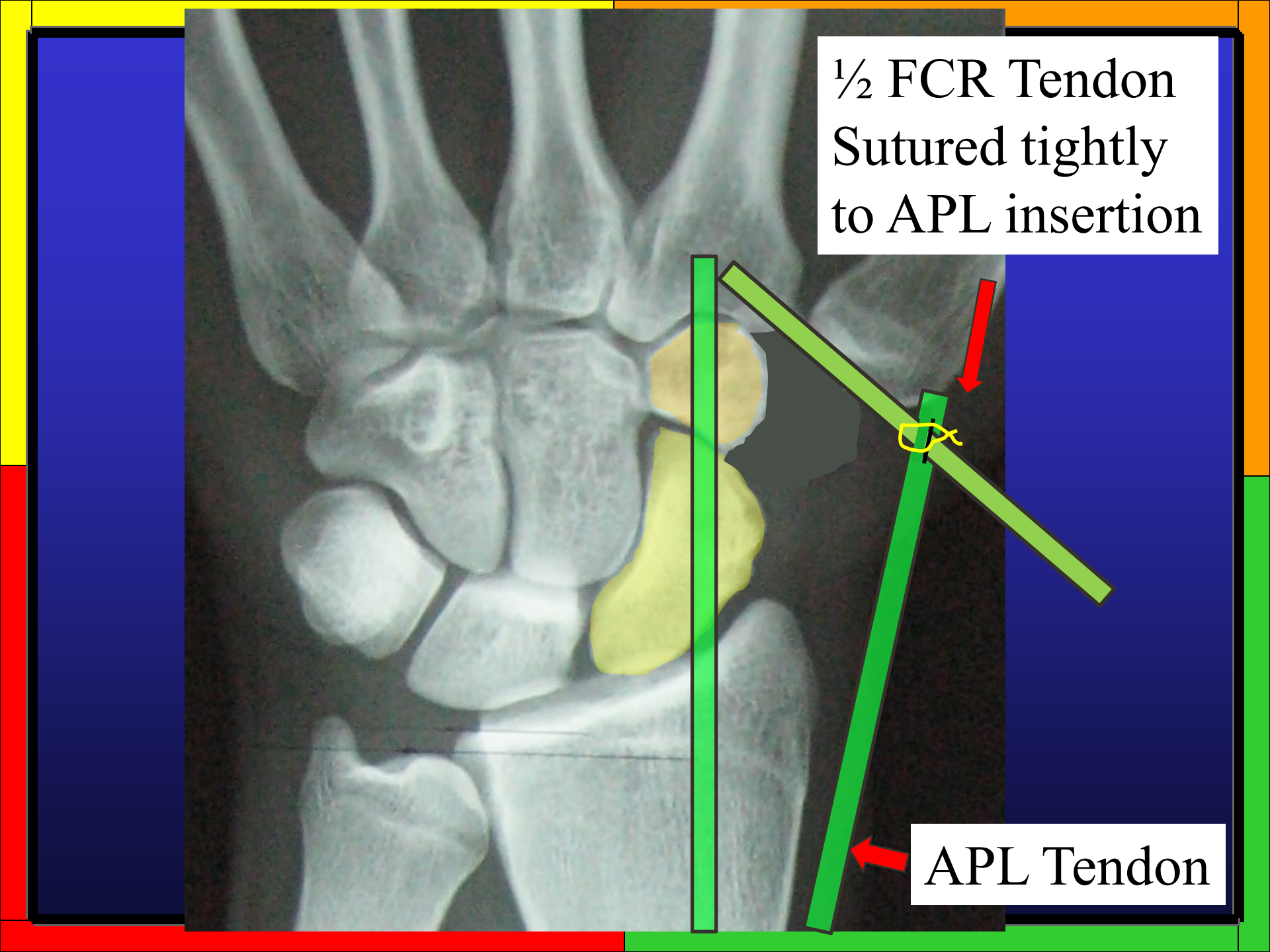
Traction thumb

Need to Split tendon to level of index MC insertion

APL insertion



Pass through CMC capsule and APL insertion



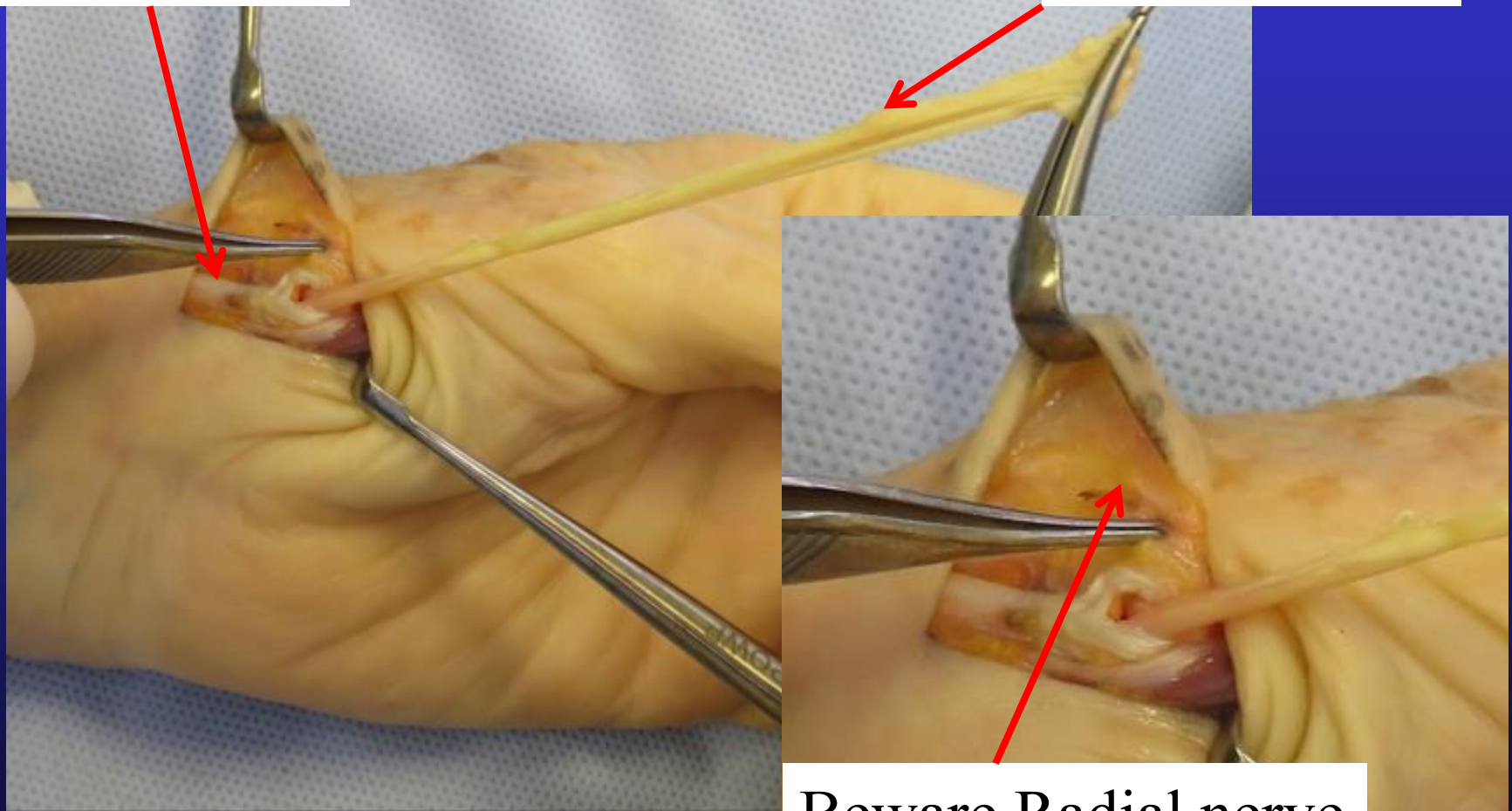
$\frac{1}{2}$ FCR Tendon
Sutured tightly
to APL insertion

APL Tendon

Suspension

APL tendon

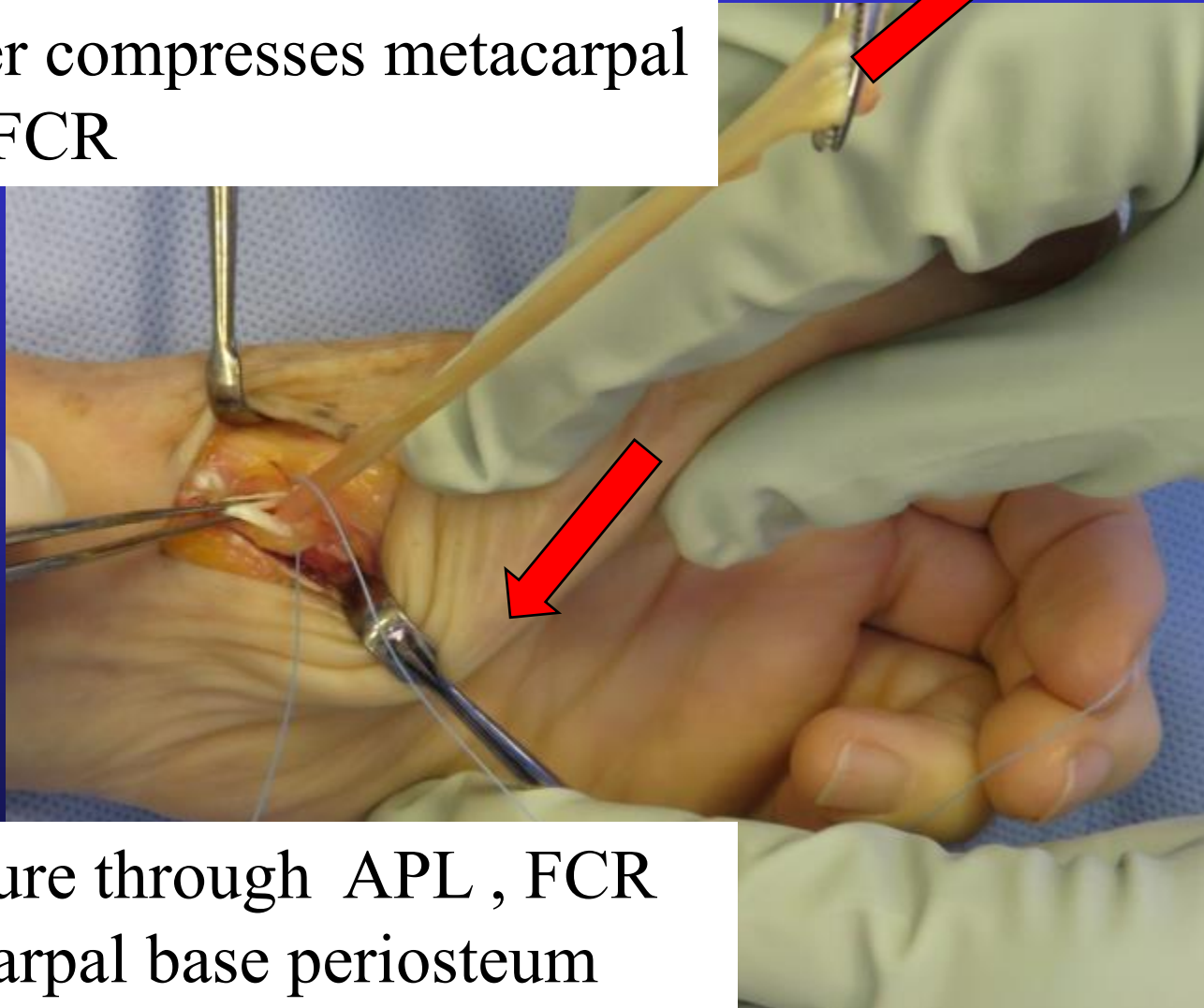
1/2 FCR tendon



Beware Radial nerve

Suspension

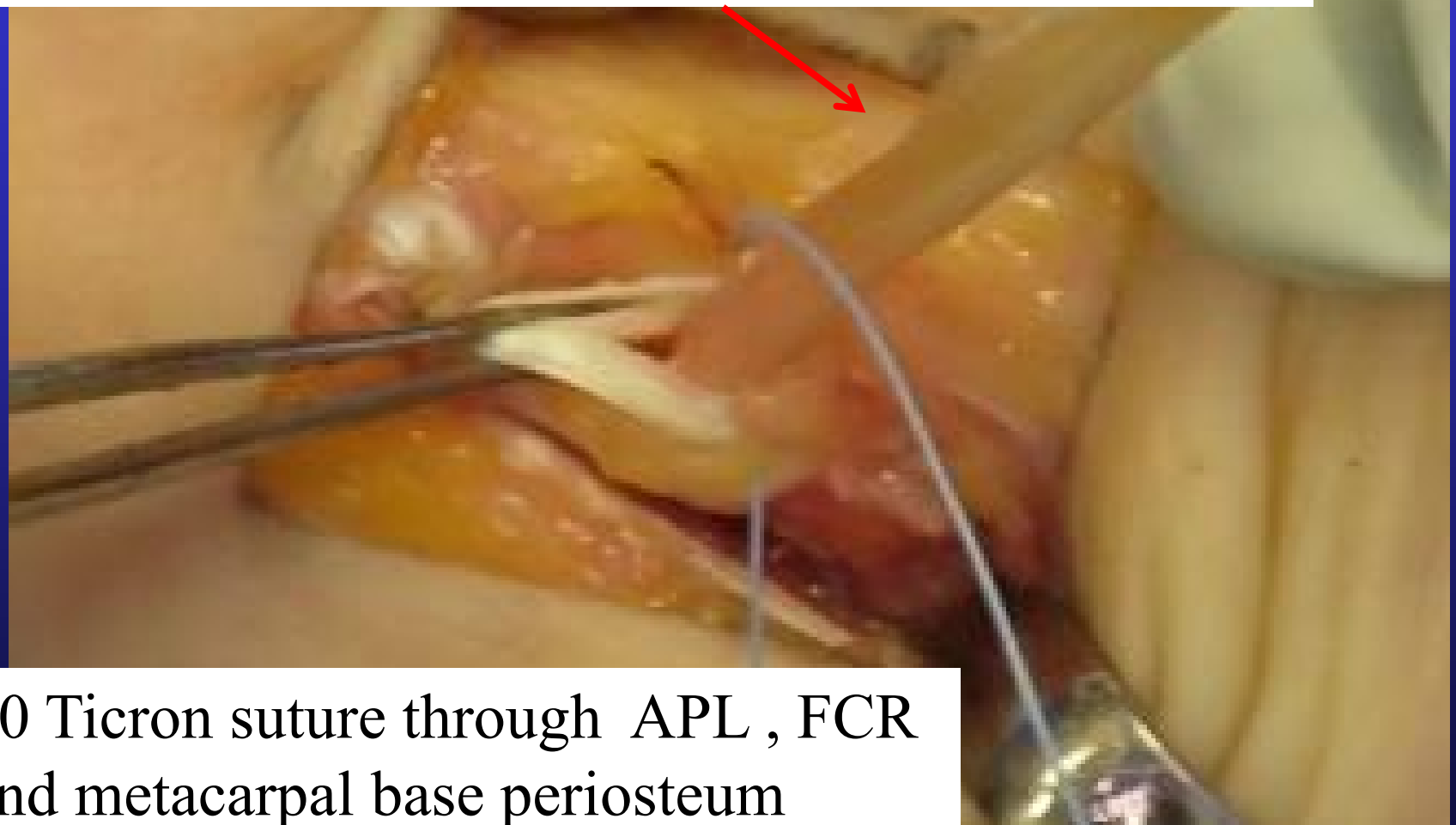
Theatre sister compresses metacarpal & tensions FCR



Ticron suture through APL , FCR and metacarpal base periosteum

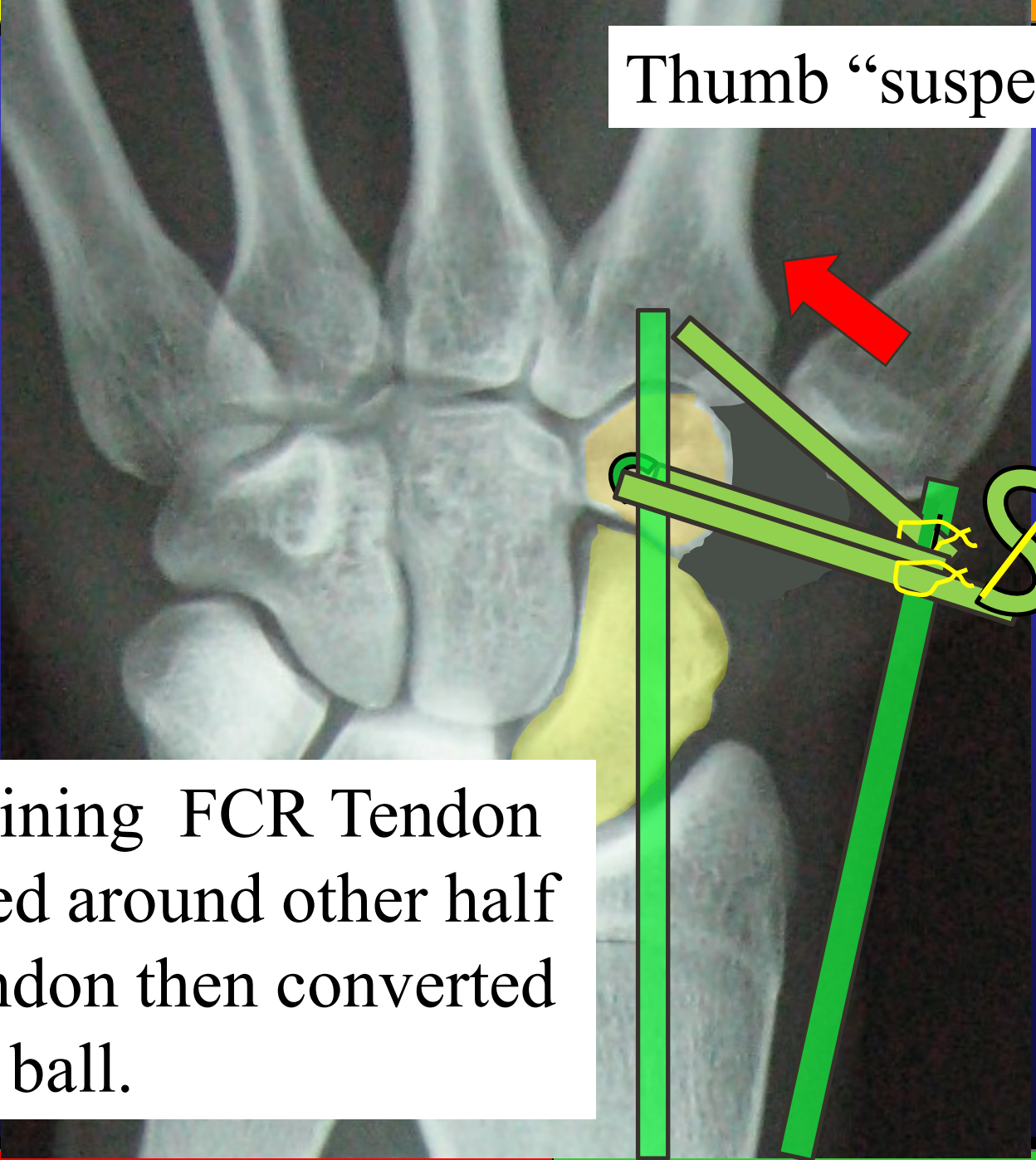
Suspension

Protect Radial nerve branches when passing suture



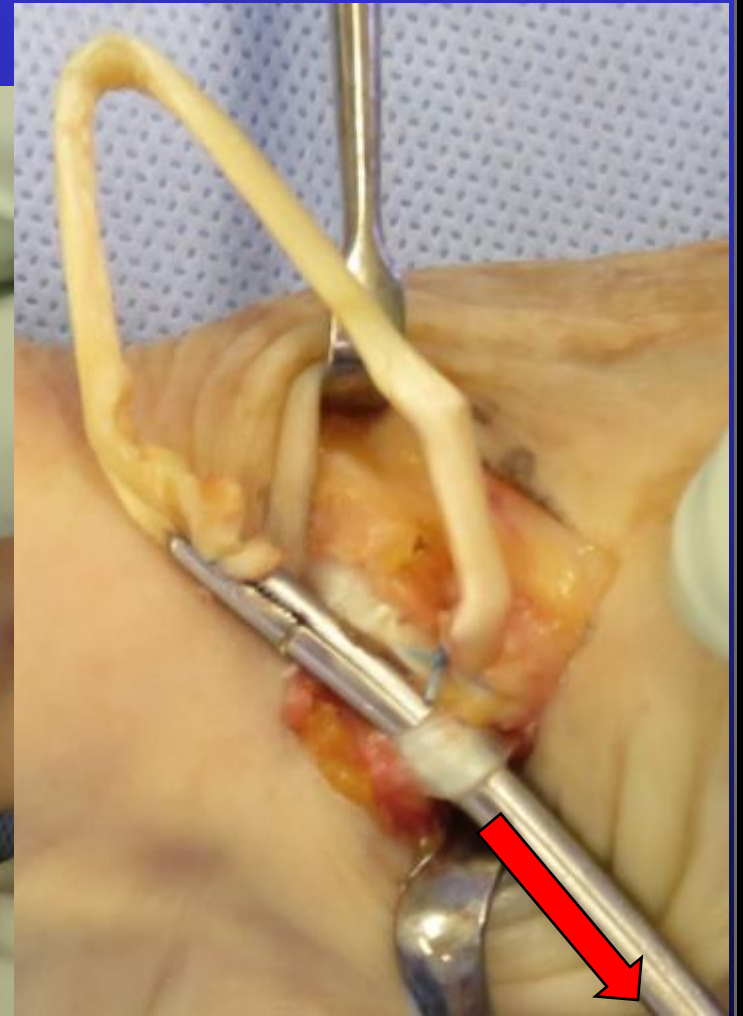
30 Ticon suture through APL , FCR
and metacarpal base periosteum

Thumb "suspended"

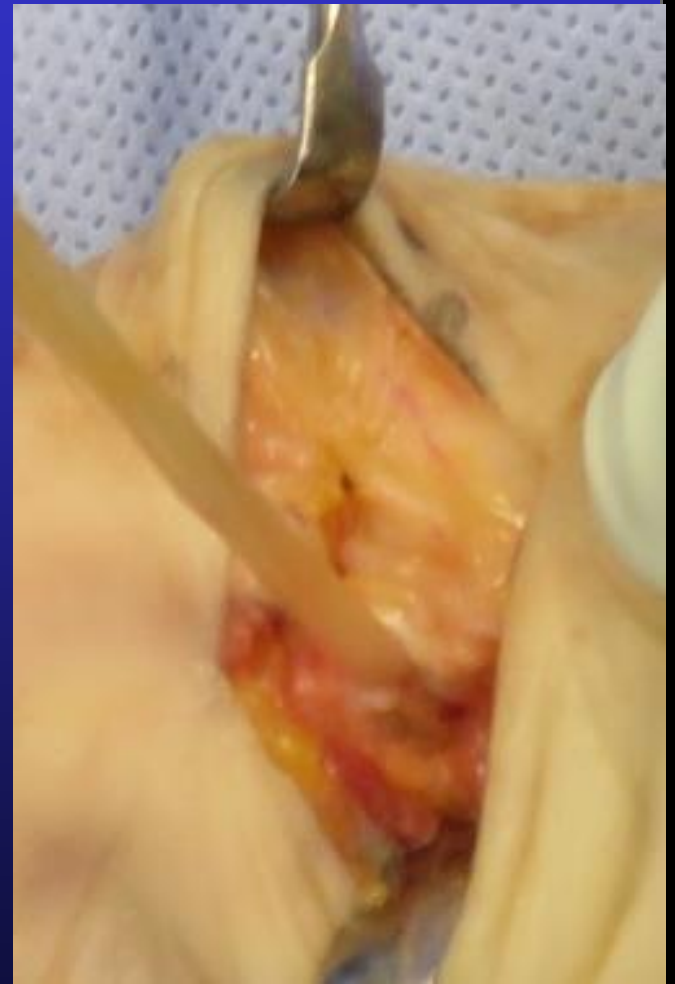
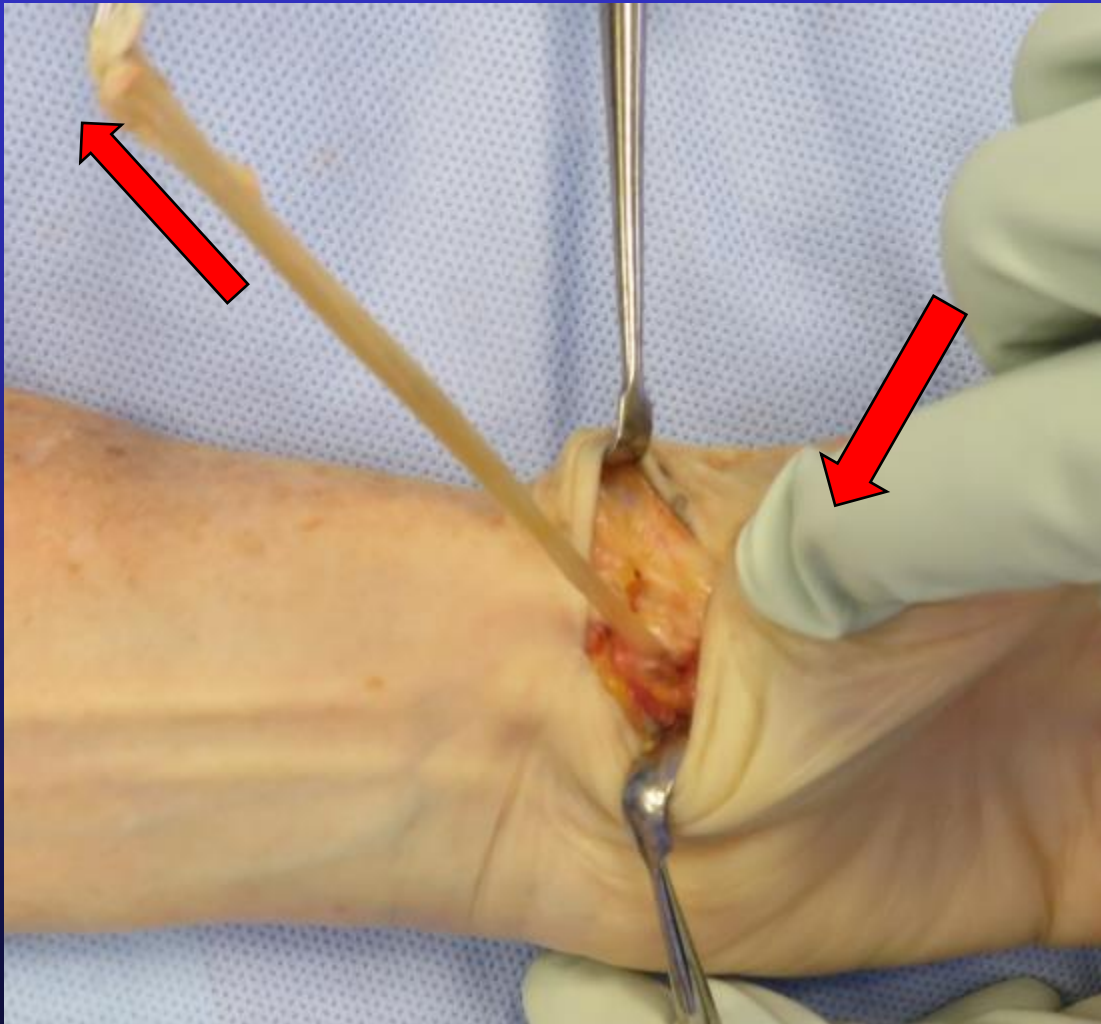


Remaining FCR Tendon
Looped around other half
Of tendon then converted
into a ball.

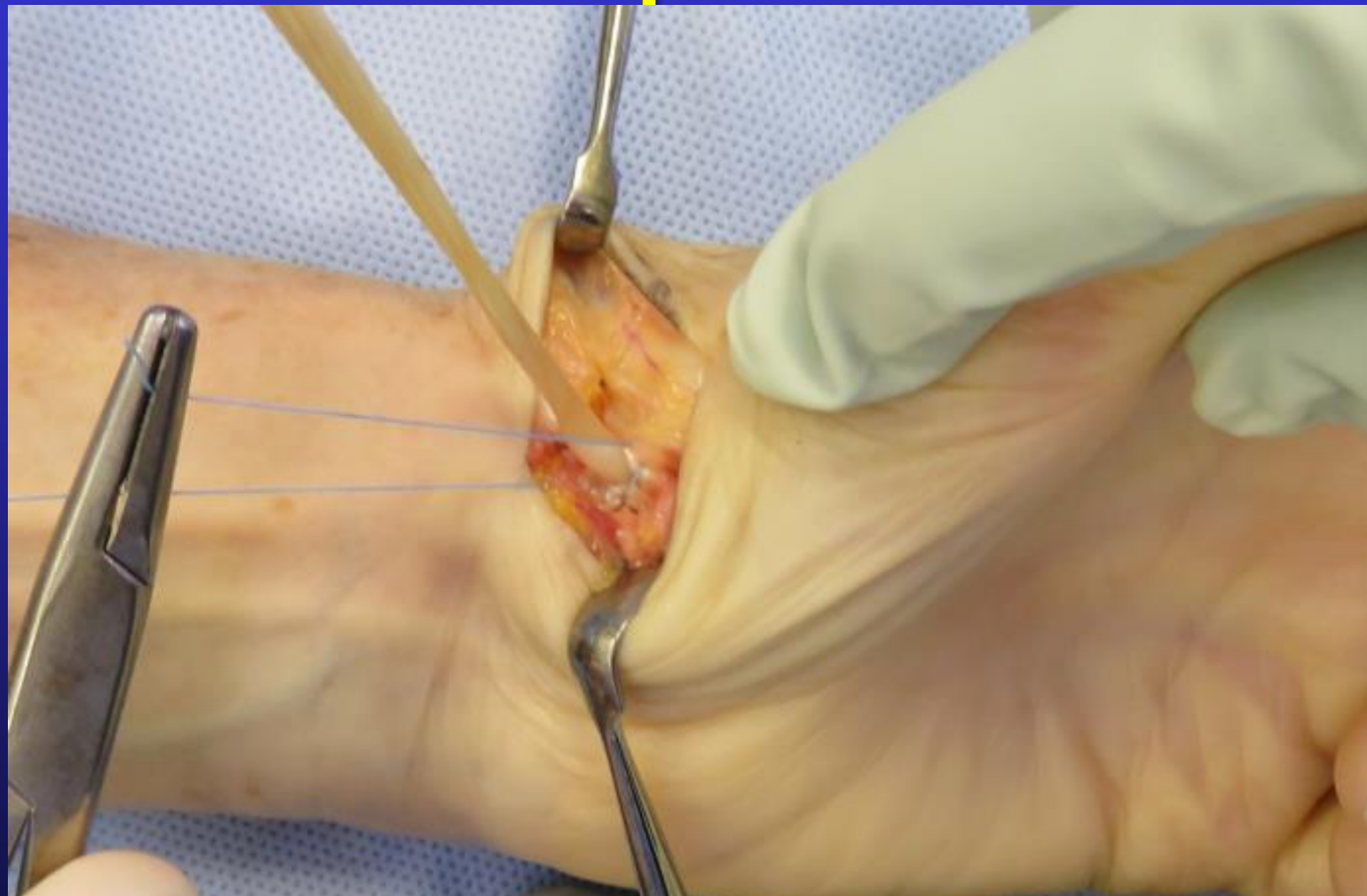
Suspension



Suspension

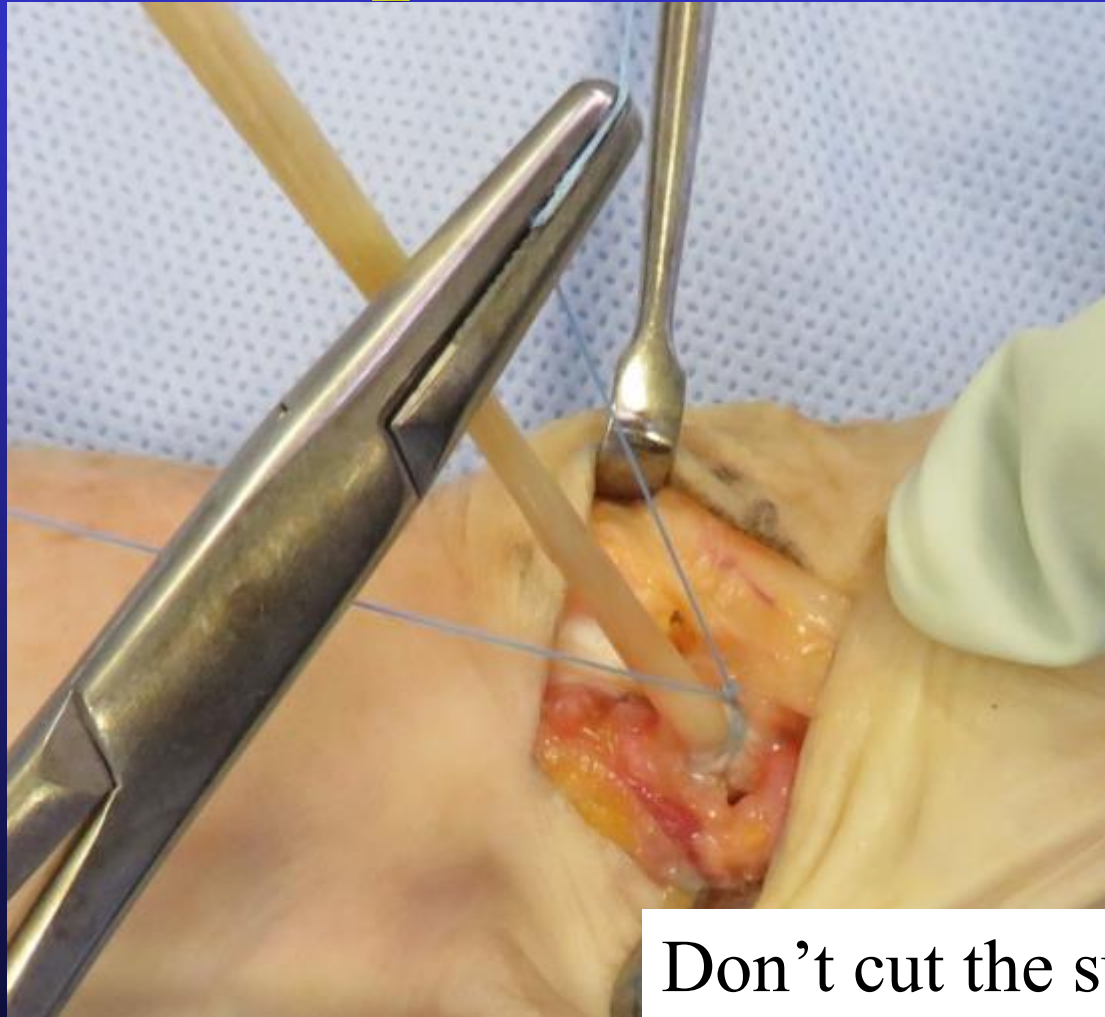


Suspension



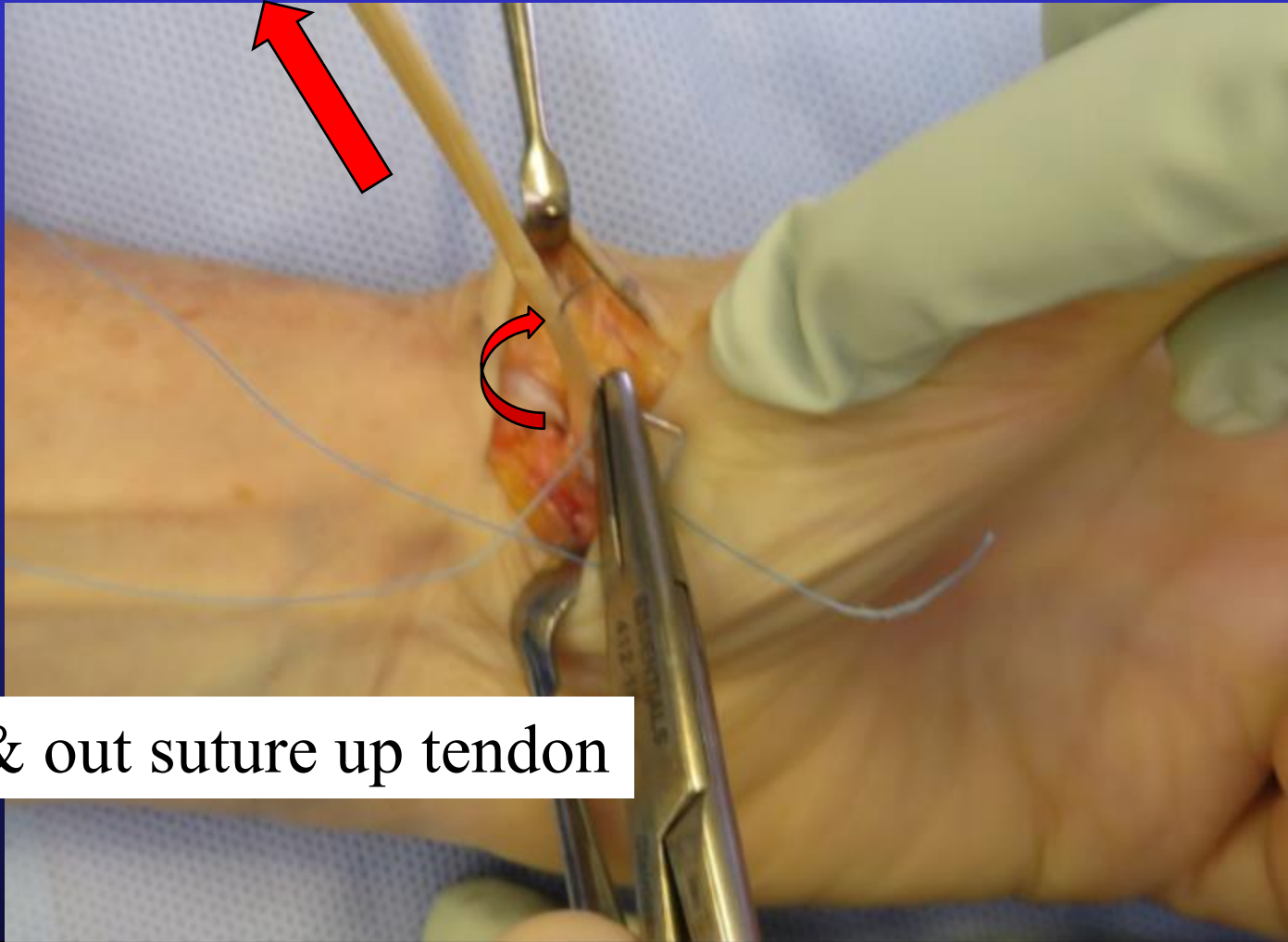
Suture through APL & FCR and perisoteum

Suspension

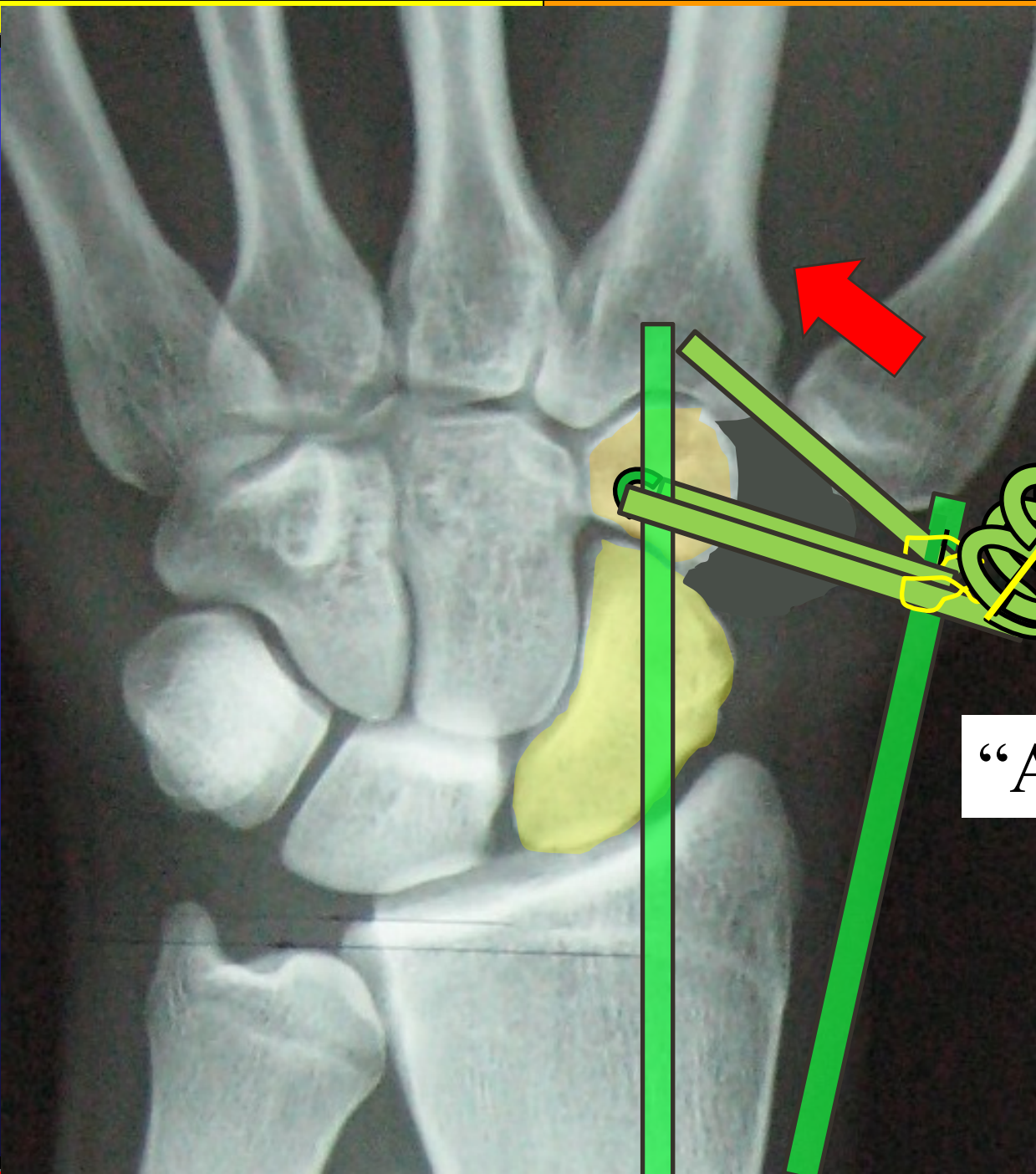


Don't cut the suture

Suspension

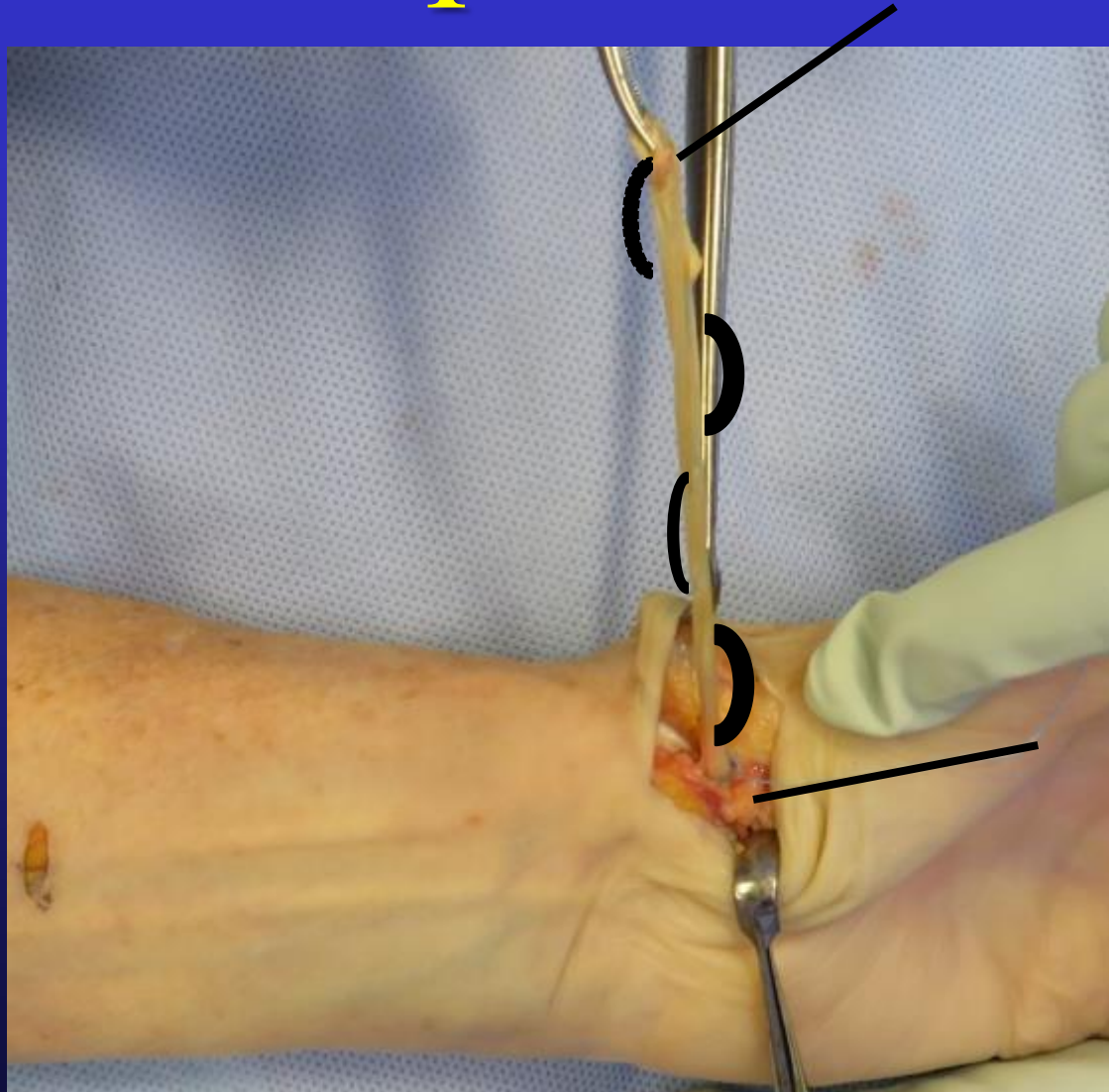


In & out suture up tendon

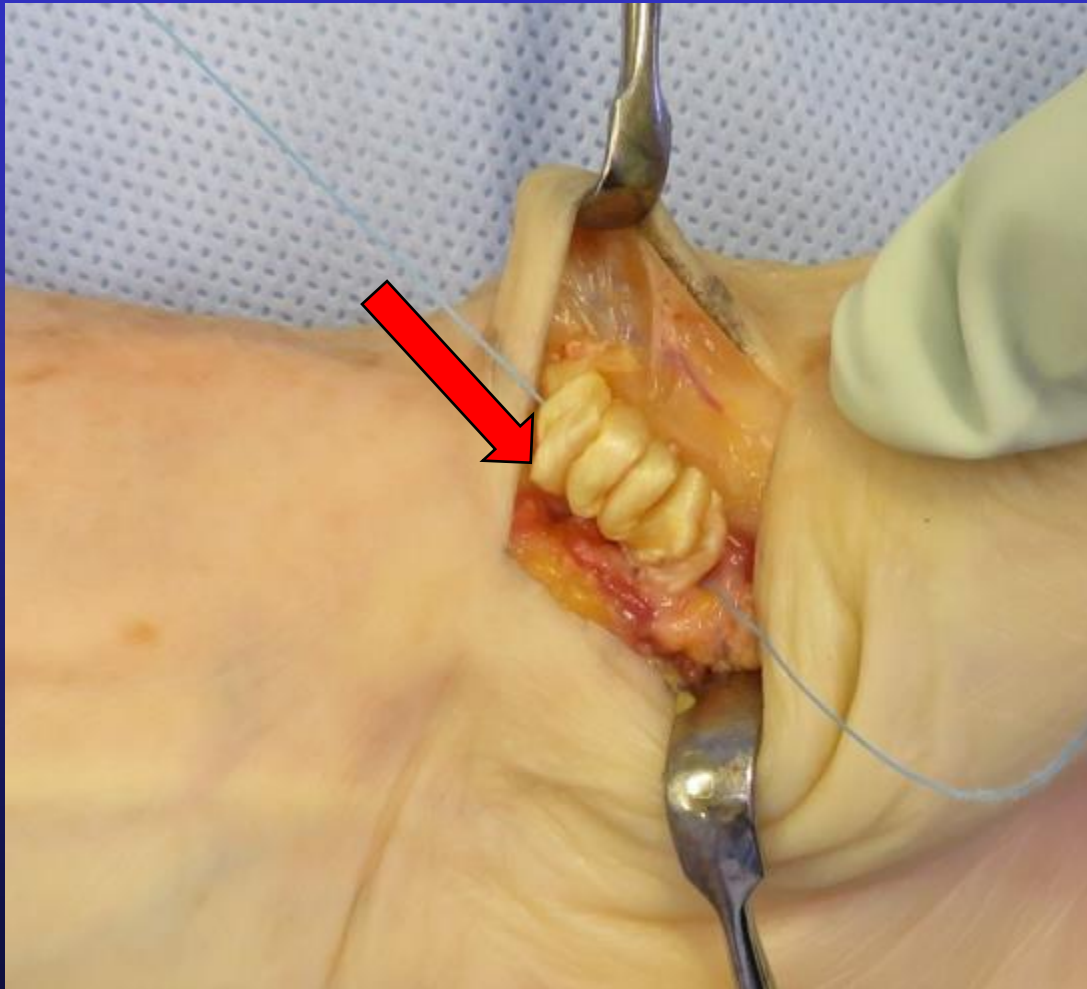


“Anchovy”

Suspension

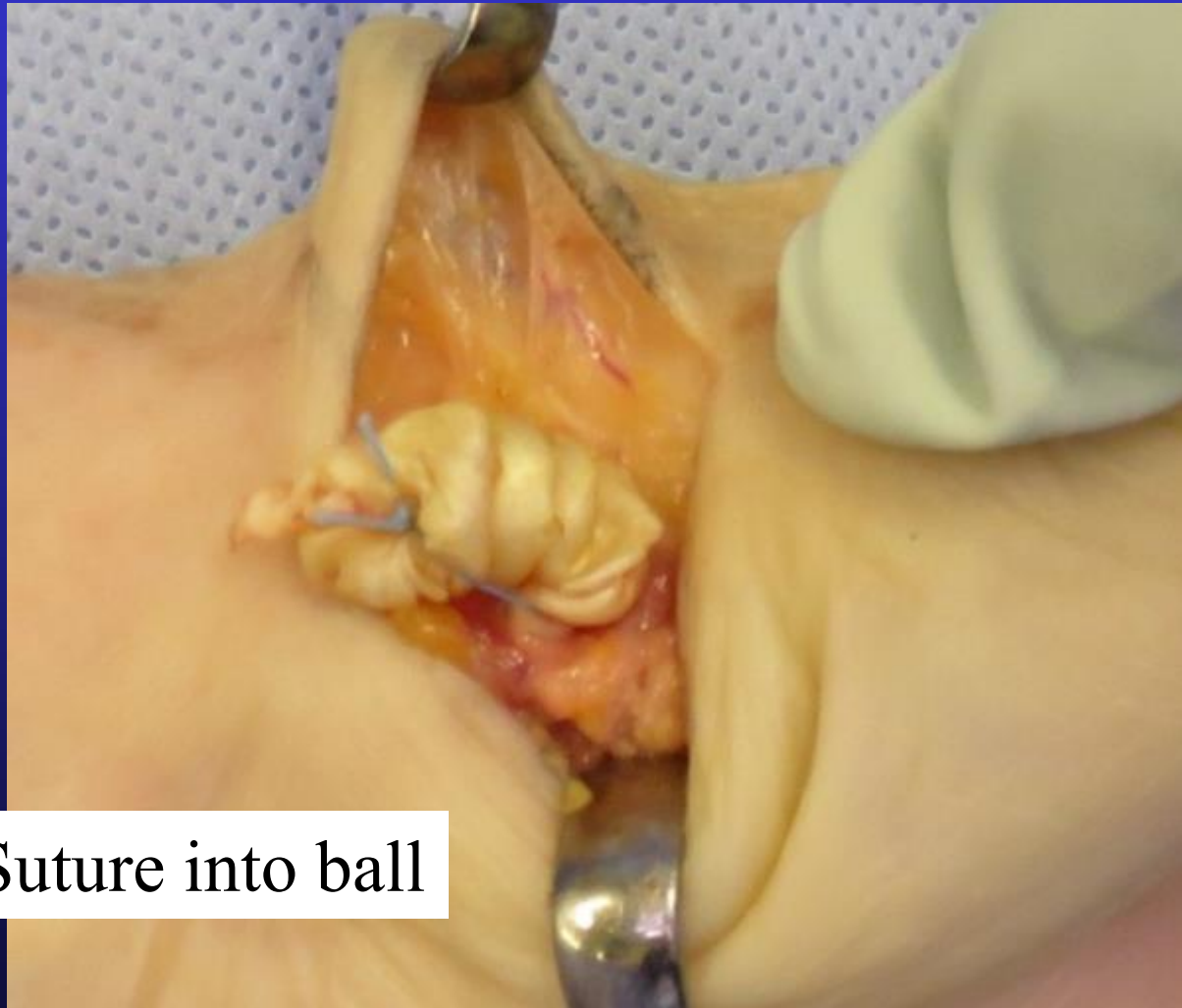


Suspension

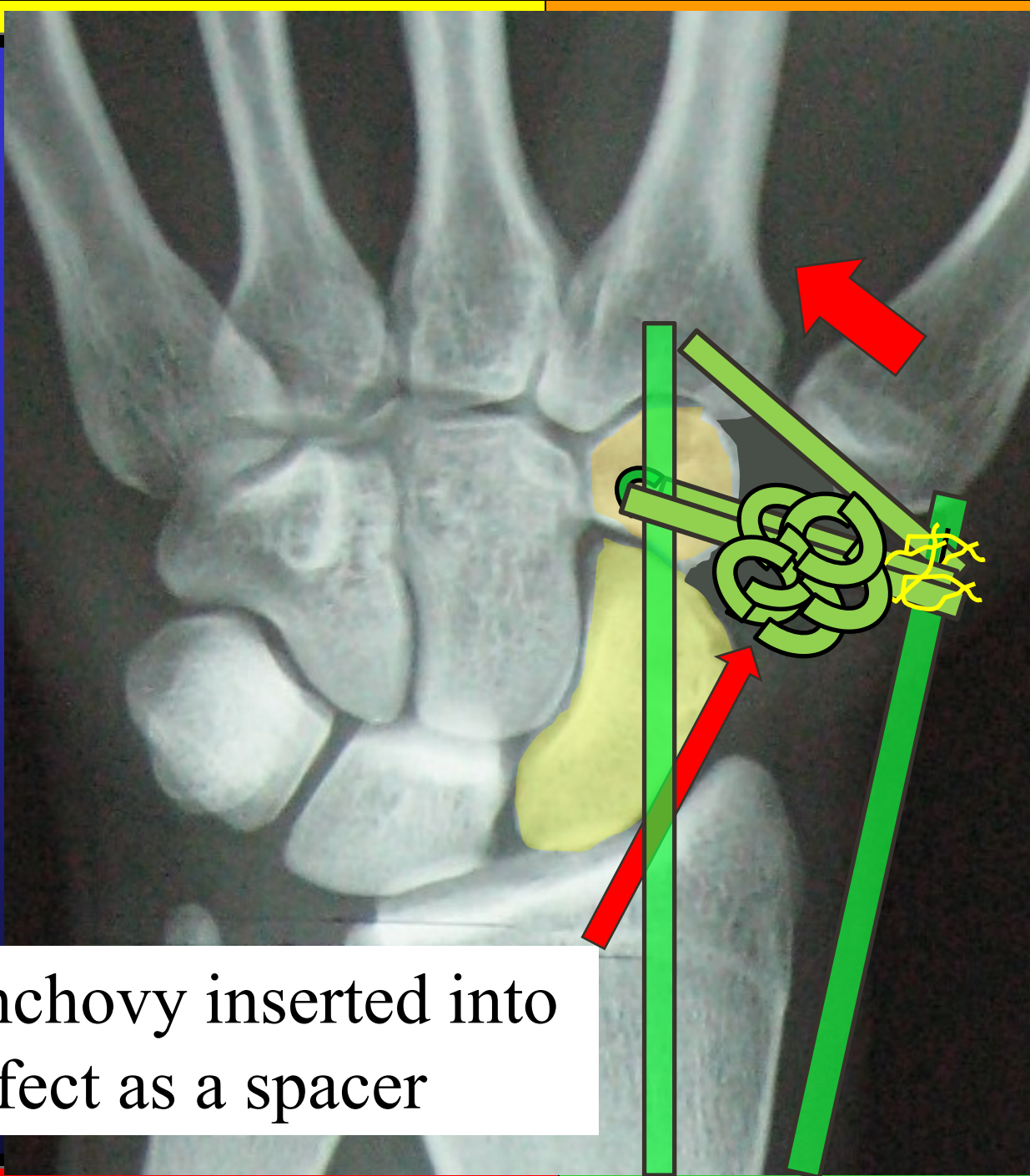


“Anchovy”

Suspension

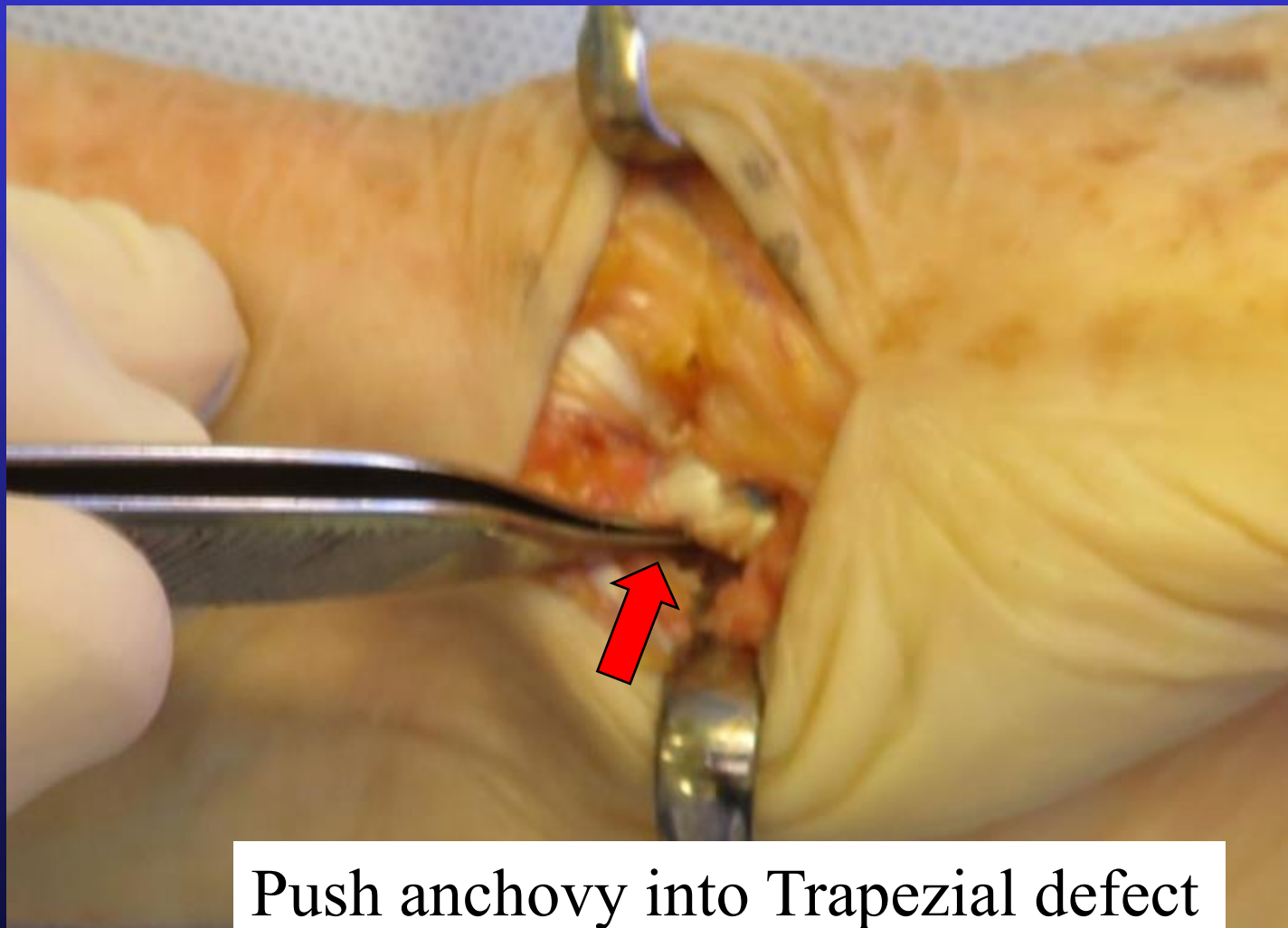


Suture into ball



Anchovy inserted into defect as a spacer

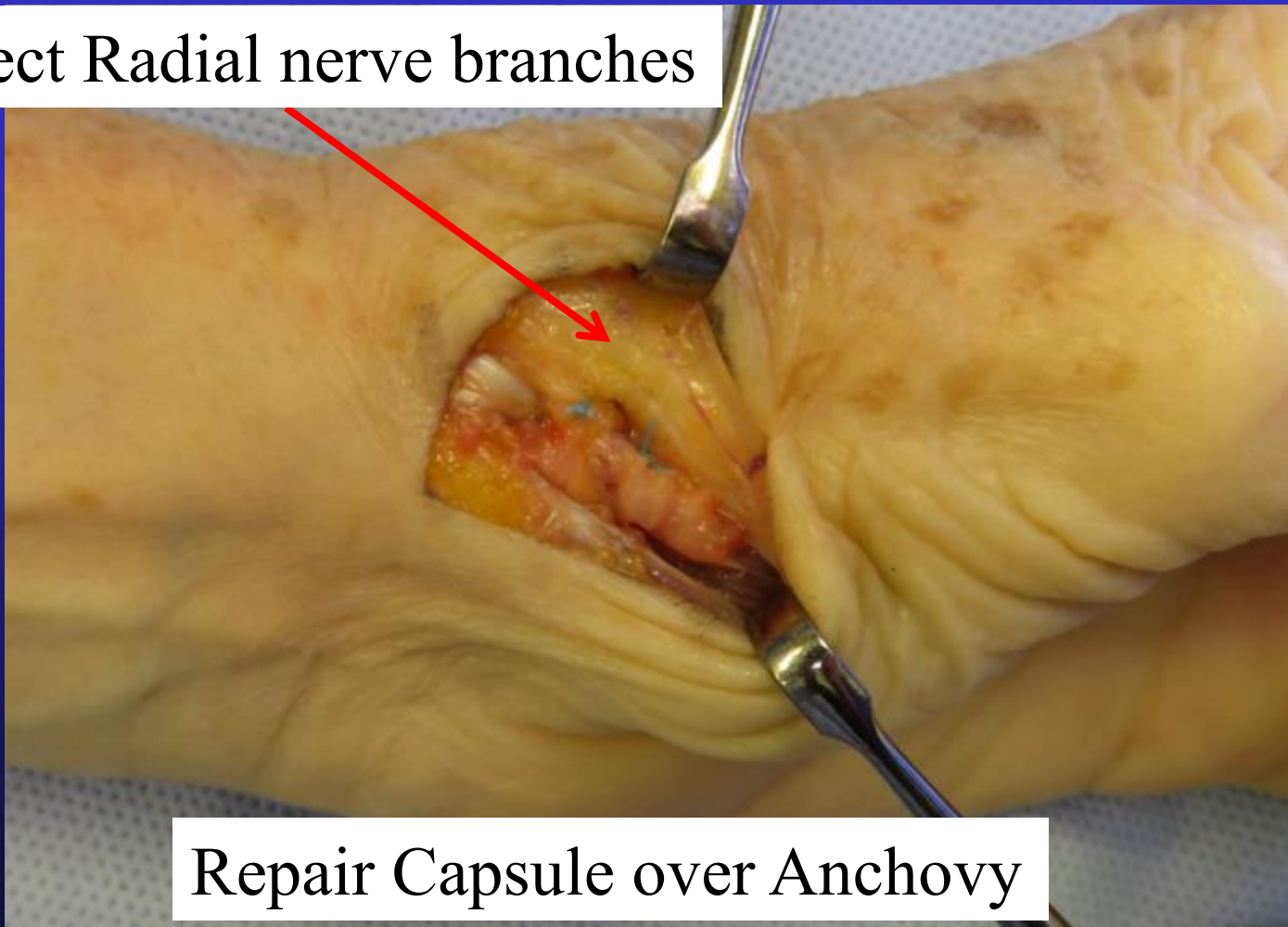
Suspension



Push anchovy into Trapezial defect

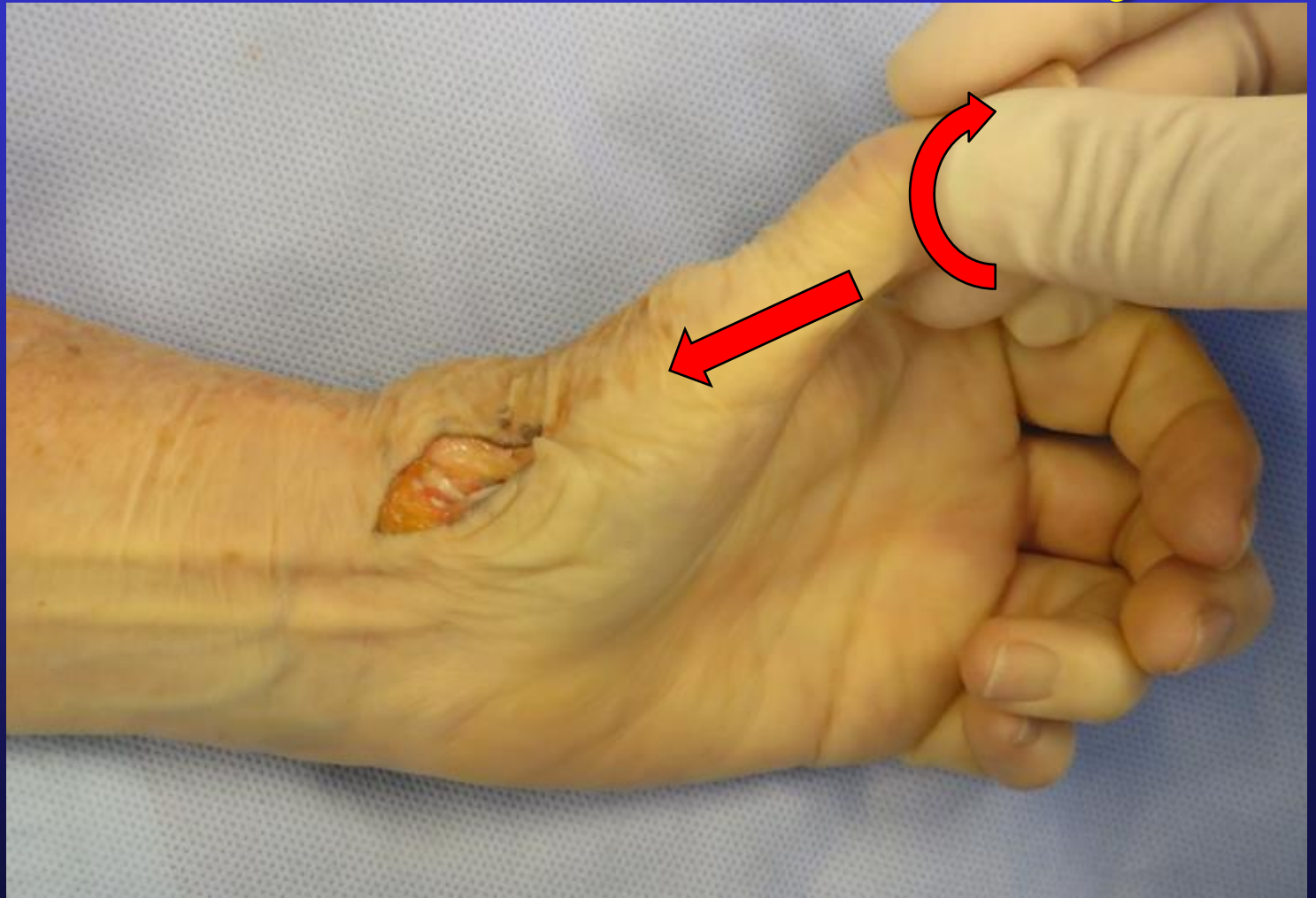
Suspension

Protect Radial nerve branches



Repair Capsule over Anchovy

Assess thumb stability



Suspension



Closure

POP Slab



Rehab



1 Week



2 Weeks



3 Weeks