

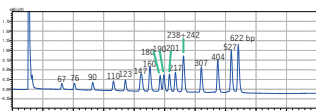
# mRNA and Oligonucleotide Purification with Chromatography

## COSMOSIL RNA

### ● pBR322/*MspI* digest

#### COSMOSIL Application Data

Column: COSMOSIL RNA-RP1  
 Column size: 4.6 mm I.D. -100 mm  
 Mobile phase: A; 100 mmol/L Triethylamine, 100 mmol/L Acetic Acid (pH7)  
 B; Acetonitrile  
 B conc. 10→17% (0→20 min), 17% (20 -25 min)  
 Flow rate: 1.0 ml/min  
 Temperature: 40 °C  
 Detection: UV260 nm  
 Sample: pBR322/*MspI* digest (200 ng/μl)  
 Inj. Vol: 5.0 μl

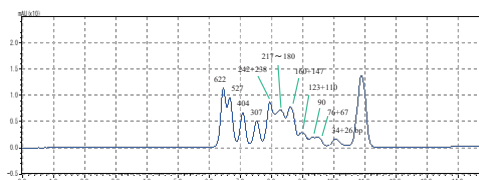


NACALAI TESQUE, INC

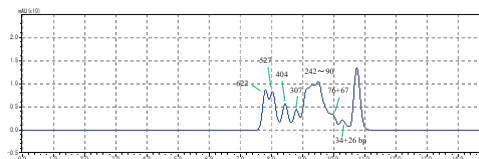
#### COSMOSIL Application Data

Column: COSMOSIL RNA-SEC-\*\*\*\*  
 Column size: 4.6 mm I.D. -250 mm  
 Mobile phase: 20 mmol/L Phosphate buffer (pH7.0)  
 Flow rate: 0.3 ml/min  
 Temperature: 40 °C  
 Detection: UV260 nm  
 Sample: pBR322/*MspI* digest (200 ng/μl)  
 Inj. Vol: 1.25 μl

COSMOSIL  
RNA-SEC-1000



COSMOSIL  
RNA-SEC-2000



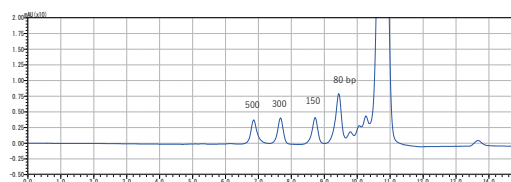
NACALAI TESQUE, INC

### ● dsRNA Ladder

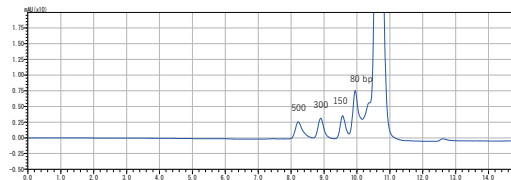
#### COSMOSIL Application Data

Column: COSMOSIL RNA-SEC-\*\*\*\*  
 Column size: 4.6 mm I.D. -250 mm  
 Mobile phase: 20 mmol/L Phosphate buffer (pH7.0)  
 Flow rate: 0.3 ml/min  
 Temperature: 65 °C  
 Detection: UV260 nm  
 Sample: dsRNA Ladder (200 ng/μl)  
 Inj. Vol: 2.0 μl

COSMOSIL  
RNA-SEC-1000



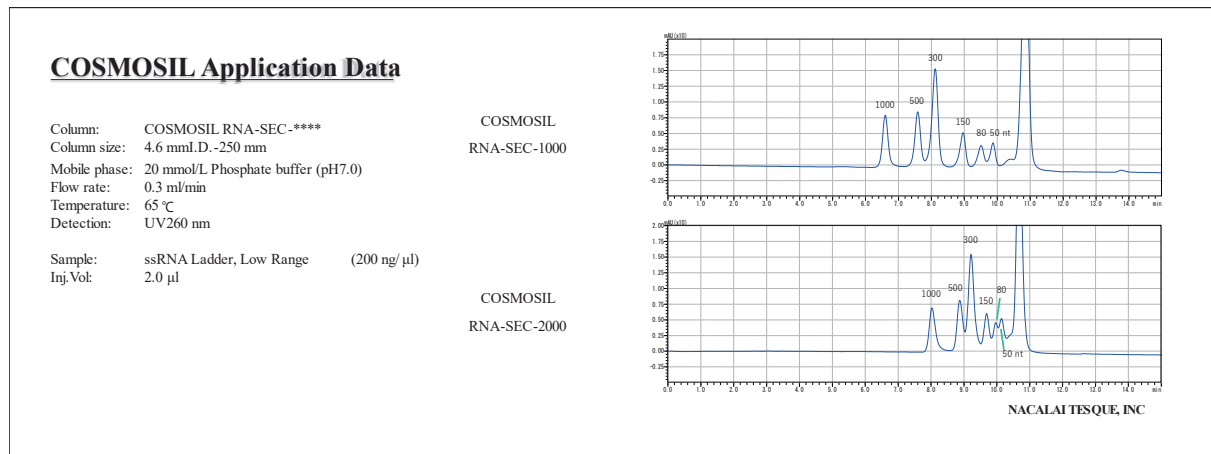
COSMOSIL  
RNA-SEC-2000



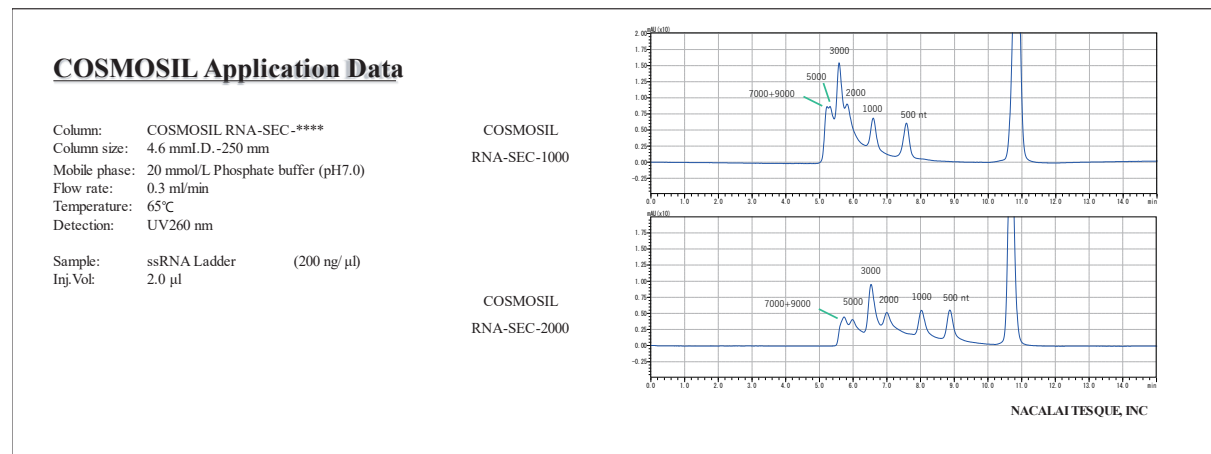
NACALAI TESQUE, INC



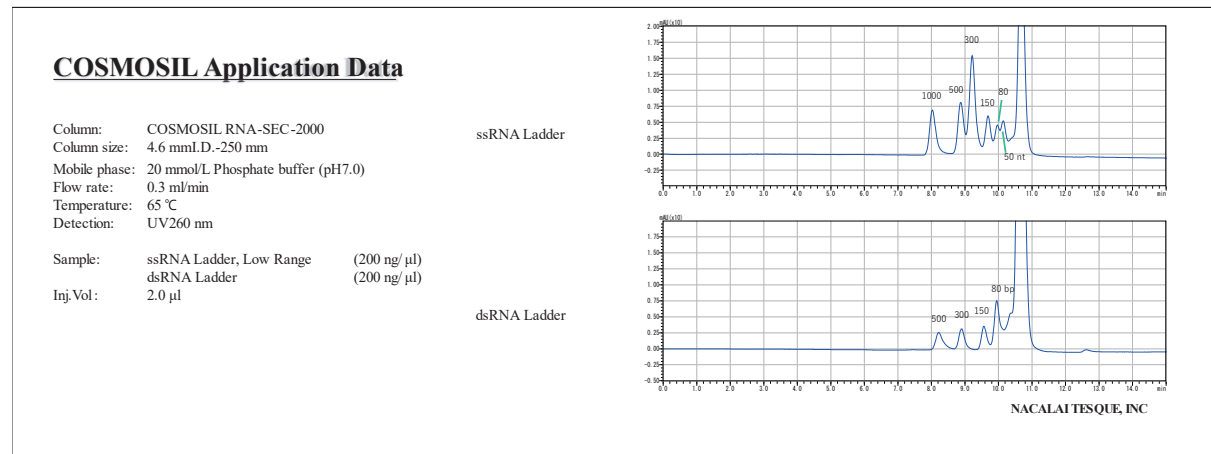
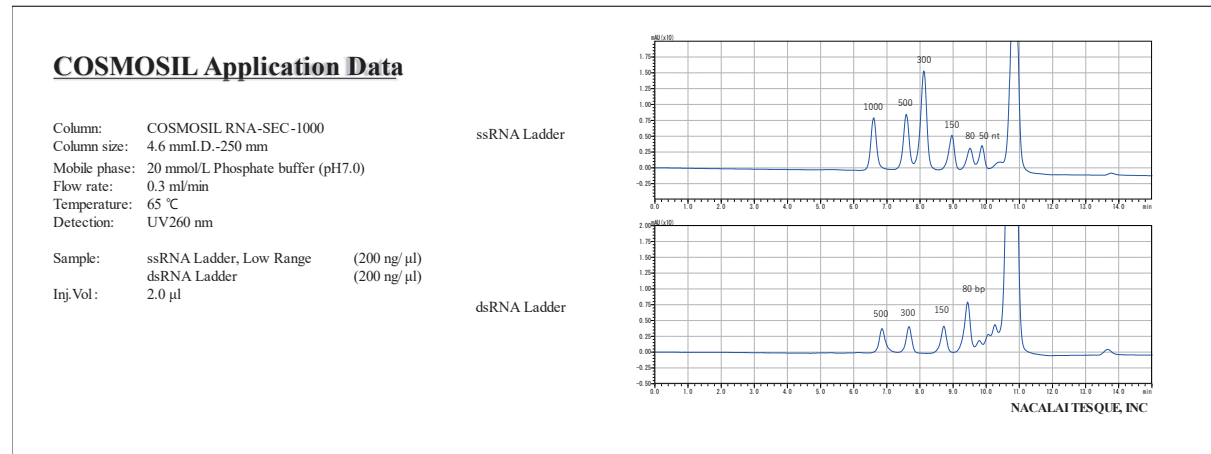
● ssRNA Ladder, Low Range



● ssRNA Ladder



● ssRNA Ladder, dsRNA Ladder

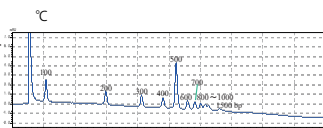


● 100 bp DNA Ladder

**COSMOSIL Application Data**

Column: COSMOSIL RNA-RP1  
 Column size: 4.6 mm I.D.-100 mm  
 Mobile phase: A; 100 mmol/L Triethylamine, 100 mmol/L Acetic Acid (pH7)  
 B; Acetonitrile  
 B conc. 12→18% (0→20 min), 18% (20-25 min)  
 Flow rate: 1.0 ml/min  
 Temperature: 40°C  
 Detection: UV260 nm

Sample: 100 bp DNA Ladder  
 (130 ng/μl)  
 Inj.Vol: 5.0 μl



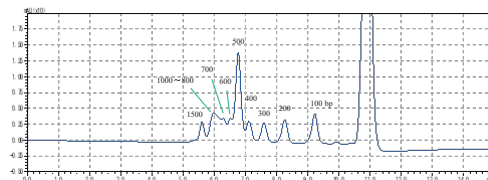
NACALAI TESQUE INC

**COSMOSIL Application Data**

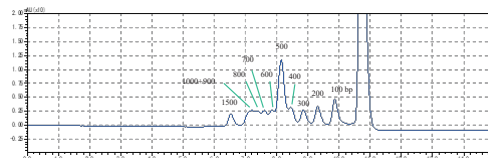
Column: COSMOSIL RNA-SEC-\*\*\*\*  
 Column size: 4.6 mm I.D.-250 mm  
 Mobile phase: 20 mmol/L Phosphate buffer (pH7.0)  
 Flow rate: 0.3 ml/min  
 Temperature: 40°C  
 Detection: UV260 nm

Sample: 100 bp DNA Ladder (130 ng/μl)  
 Inj.Vol: 4.0 μl

COSMOSIL  
 RNA-SEC-1000



COSMOSIL  
 RNA-SEC-2000



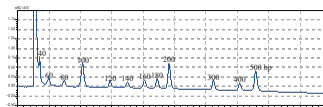
NACALAI TESQUE, INC

● 20 bp DNA Ladder

**COSMOSIL Application Data**

Column: COSMOSIL RNA-RP1  
 Column size: 4.6 mm I.D.-100 mm  
 Mobile phase: A; 100 mmol/L Triethylamine, 100 mmol/L Acetic Acid (pH7)  
 B; Acetonitrile  
 B conc. 11→16% (0→20 min), 16% (20-25 min)  
 Flow rate: 1.0 ml/min  
 Temperature: 40°C  
 Detection: UV260 nm

Sample: 20 bp DNA Ladder  
 (200 ng/μl)  
 Inj.Vol: 5.0 μl



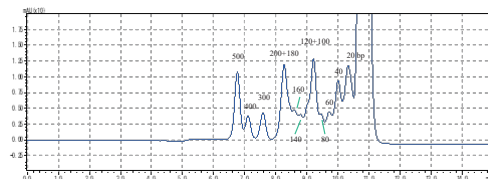
NACALAI TESQUE INC

**COSMOSIL Application Data**

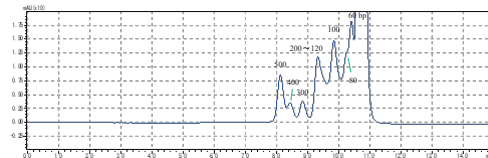
Column: COSMOSIL RNA-SEC-\*\*\*\*  
 Column size: 4.6 mm I.D.-250 mm  
 Mobile phase: 20 mmol/L Phosphate buffer (pH7.0)  
 Flow rate: 0.3 ml/min  
 Temperature: 40°C  
 Detection: UV260 nm

Sample: 20 bp DNA Ladder (200 ng/μl)  
 Inj.Vol: 2.5 μl

COSMOSIL  
 RNA-SEC-1000



COSMOSIL  
 RNA-SEC-2000



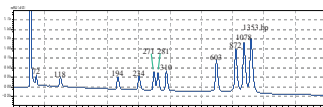
NACALAI TESQUE, INC

●  $\Phi$ X174/*Hae*III digest

**COSMOSIL Application Data**

Column: COSMOSIL RNA-RP1  
 Column size: 4.6 mmI.D. -100 mm  
 Mobile phase: A: 100 mmol/L Triethylamine, 100 mmol/L Acetic Acid (pH7)  
 B: Acetonitrile  
 B conc. 12→17% (0→20 min), 17% (20 -25 min)  
 Flow rate: 1.0 ml/min  
 Temperature: 40°C  
 Detection: UV260 nm

Sample:  $\Phi$ X174/*Hae*III digest  
 (200 ng/ $\mu$ l)  
 Inj.Vol: 5.0  $\mu$ l



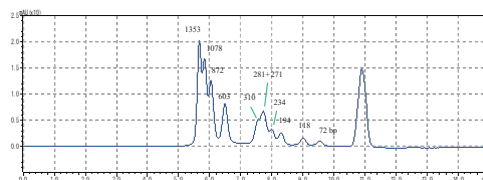
NACALAI TESQUE, INC

**COSMOSIL Application Data**

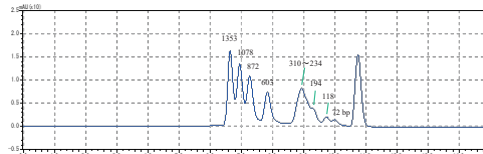
Column: COSMOSIL RNA-SEC-\*\*\*\*  
 Column size: 4.6 mmI.D. -250 mm  
 Mobile phase: 20 mmol/L Phosphate buffer (pH7.0)  
 Flow rate: 0.3 ml/min  
 Temperature: 40°C  
 Detection: UV260 nm

COSMOSIL  
 RNA-SEC-1000

Sample:  $\Phi$ X174/*Hae*III digest (200 ng/ $\mu$ l)  
 Inj.Vol: 1.25  $\mu$ l



COSMOSIL  
 RNA-SEC-2000



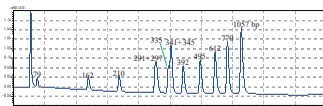
NACALAI TESQUE, INC

●  $\Phi$ X174/*Hinc*II digest

**COSMOSIL Application Data**

Column: COSMOSIL RNA-RP1  
 Column size: 4.6 mmI.D. -100 mm  
 Mobile phase: A: 100 mmol/L Triethylamine, 100 mmol/L Acetic Acid (pH7)  
 B: Acetonitrile  
 B conc. 12→17% (0→20 min), 17% (20 -25 min)  
 Flow rate: 1.0 ml/min  
 Temperature: 40°C  
 Detection: UV260 nm

Sample:  $\Phi$ X174/*Hinc*II digest  
 (200 ng/ $\mu$ l)  
 Inj.Vol: 5.0  $\mu$ l



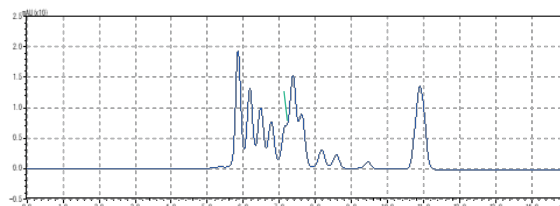
NACALAI TESQUE, INC

**COSMOSIL Application Data**

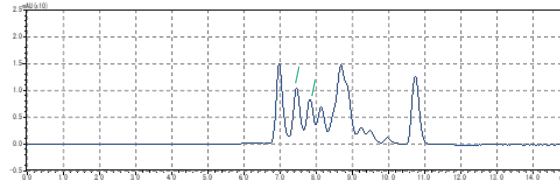
Column: COSMOSIL RNA-SEC-\*\*\*\*  
 Column size: 4.6 mmI.D. -250 mm  
 Mobile phase: 20 mmol/L Phosphate buffer (pH7.0)  
 Flow rate: 0.3 ml/min  
 Temperature: 40°C  
 Detection: UV260 nm

COSMOSIL  
 RNA-SEC-1000

Sample:  $\Phi$ X174/*Hinc*II digest (200 ng/ $\mu$ l)  
 Inj.Vol: 1.25  $\mu$ l



COSMOSIL  
 RNA-SEC-2000



NACALAI TESQUE, INC