

MODEL 3600 TWIN-LINE PLANTER

“T” HITCH AND WIDE ROW SUPPLEMENT

M0242

Rev. 6/14

This manual applies to:

- Model: 3600 Twin-Line Planters (2012 Production and on)
- 12 Row 30" and 16 Row 30" "T" Hitch, Mechanical/Conventional
- 12 Row Wide 36"/38" "Y" Hitch, Mechanical/Conventional
- 12 Row 30" "T" Hitch, EdgeVac/Conventional

The following parts pages are specific to your model 3600 planter. If any parts information is needed for Inner/outer hitch, center frame, wing frame, center pivot, axle, row markers, center lift cylinder, wing lift cylinder, tongue cylinder, row marker cylinder, or hydraulics, please refer to these supplement pages. For all other parts information, please refer to the Parts manual (M0236-02).

Record the model number and serial number of your planter along with date purchased:

Serial Number _____

Date Purchased _____

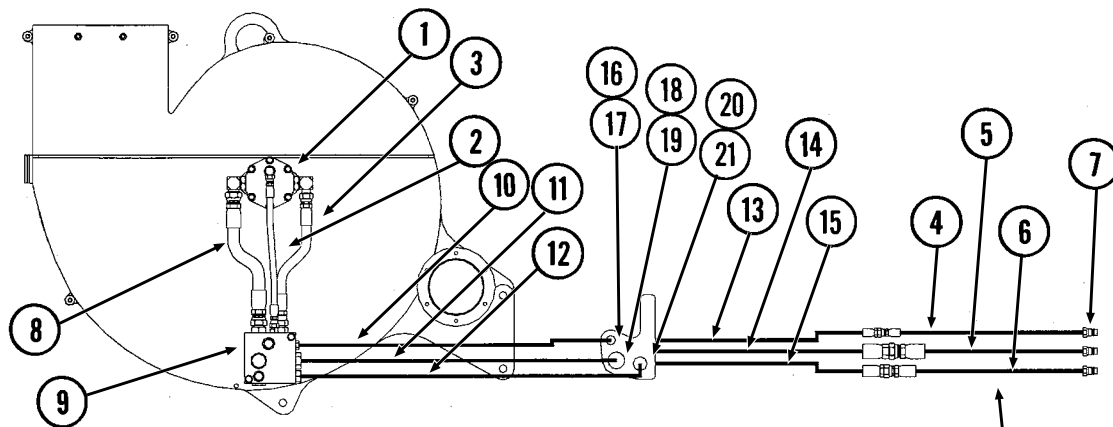
Information in this manual was current at time of printing. However, due to Kinze's ongoing product improvement, production changes may cause your machine to appear slightly different in detail. Kinze Manufacturing, Inc. reserves the right to change specifications or design without notice and without incurring obligation to install the same on machines previously manufactured.

Right hand (R.H.) and left hand (L.H.), as used throughout this manual, are determined by facing in the direction the machine will travel when in use, unless otherwise stated.

Vacuum Fan Hydraulic Components	P1
Outer Hitch	P3
Inner Hitch, "Y"	P5
Inner Hitch, "T"	P7
Hose Take-Up	P9
Center Frame	P11
Wing Frame	P13
Center Pivot	P15
Axle Assembly	P17
Row Marker Assembly, 12 Row 30"	P19
Row Marker Assembly, 12 Row 36"/38" and 16 Row 30"	P21
Center Lift Cylinder, All Sizes	P23
Wing Lift Cylinder, 12 Row	P24
Wing Lift Cylinder, 16 Row	P25
Tongue Cylinder, 12 Row 30" with "T" Hitch and 12 Row 36"/38" with "Y" Hitch	P26
Tongue Cylinder, 16 Row 30" with "T" Hitch	P27
Row Marker (Cushion) Cylinder, All Sizes	P28
Valve Blocks - Located on R.H. Rear Center Frame	P29
Hydraulic Hoses and Fittings on Hitch	P31
Hydraulic Hoses and Fittings on Planter Frame	P33
Numerical Index	P35

This page left blank intentionally.

(PLTR176)



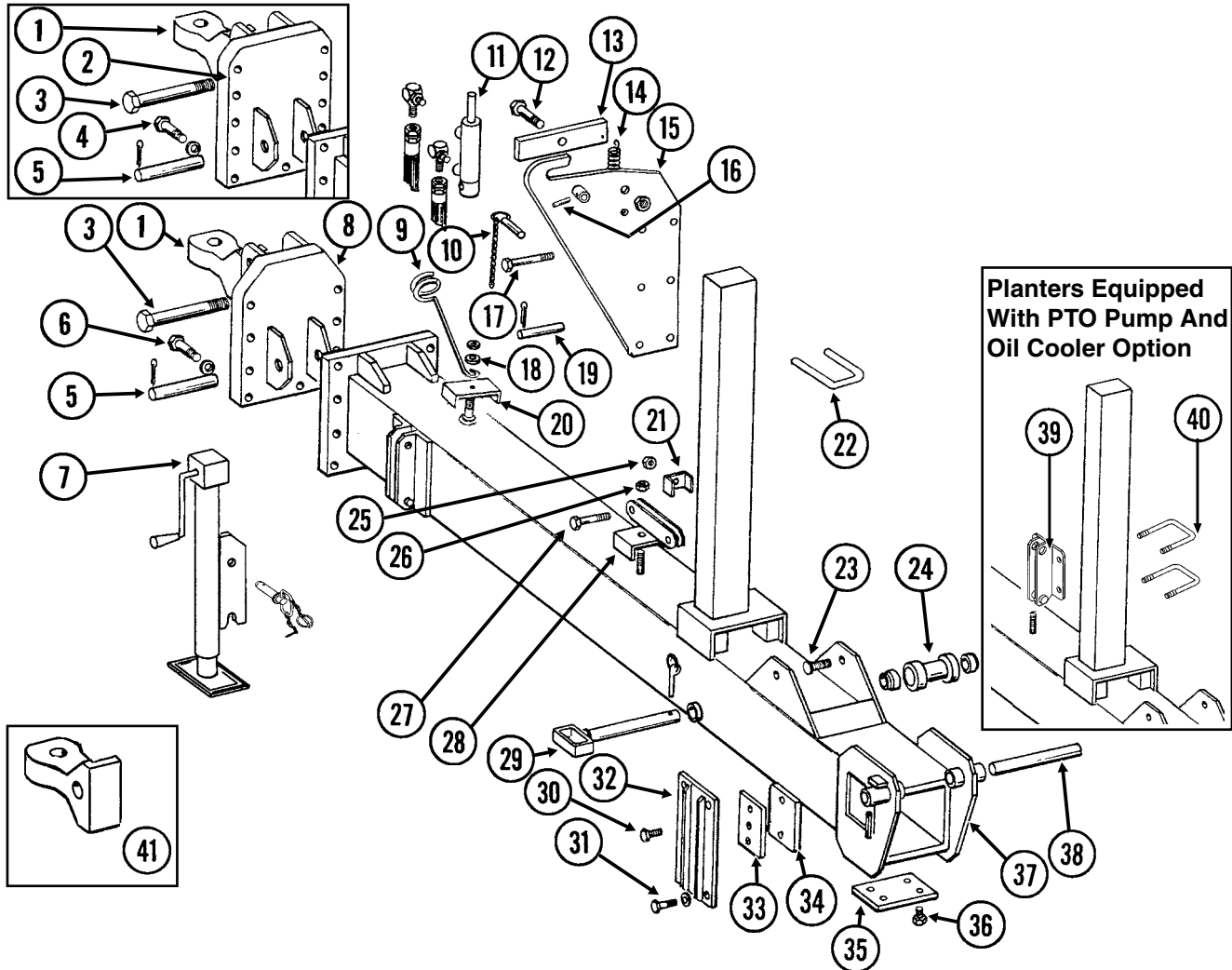
See "PTO Pump Drive And Oil Cooler Option" (located in M0236-02) if equipped with that option.

ITEM	PART NO.	QTY.	DESCRIPTION
1	---	-	See "Vacuum Fan Hydraulic Motor Assembly" (Located in M0236-02)
2	*A12015	1	Hose Assembly, 3/8" x 17"
3	*A8261	1	Hose Assembly, 1/2" x 13 1/2"
4	*A12019	-	Hose Assembly, 3/8" x 322", 12 Row 30" "T" Hitch
5	*A3361	-	Hose Assembly, 3/4" x 322", 12 Row 30" "T" Hitch
6	*A8269	-	Hose Assembly, 1/2" x 322", 12 Row 30" "T" Hitch
7	GD4086	3	ISO Coupler
8	*A3352	1	Hose Assembly, 3/4" x 13 1/2"
9	---	-	See "Vacuum Fan Motor Valve Block Assembly (Located Below Vacuum Fan Motor Assembly)" (Located in M0236-02)
10	*A12017	1	Hose Assembly, 3/8" x 120"
11	*A3354	1	Hose Assembly, 3/4" x 120"
12	*A1467	1	Hose Assembly, 1/2" x 120"
13	*A12036	-	Hose Assembly, 3/8" x 104", 12 Row 30"
14	*A3377	-	Hose Assembly, 3/4" x 104", 12 Row 30"
15	*A8284	-	Hose Assembly, 1/2" x 104", 12 Row 30"
16	G306-06	1	Lock Nut, 9/16"-18
17	G2700-06-06	1	Bulkhead Tube Union, 9/16"-18 Male JIC
18	G306-12	1	Lock Nut, 1 1/16"-12
19	G2700-12	1	Bulkhead Tube Union, 1 1/16"-12 Male JIC
20	G306-10	1	Lock Nut, 7/8"-14
21	G2700-10	1	Bulkhead Tube Union, 7/8"-14 Male JIC

* Hydraulic hose is not stocked by Kinze Repair Parts, but can be made available on a special order basis. Call for quote.

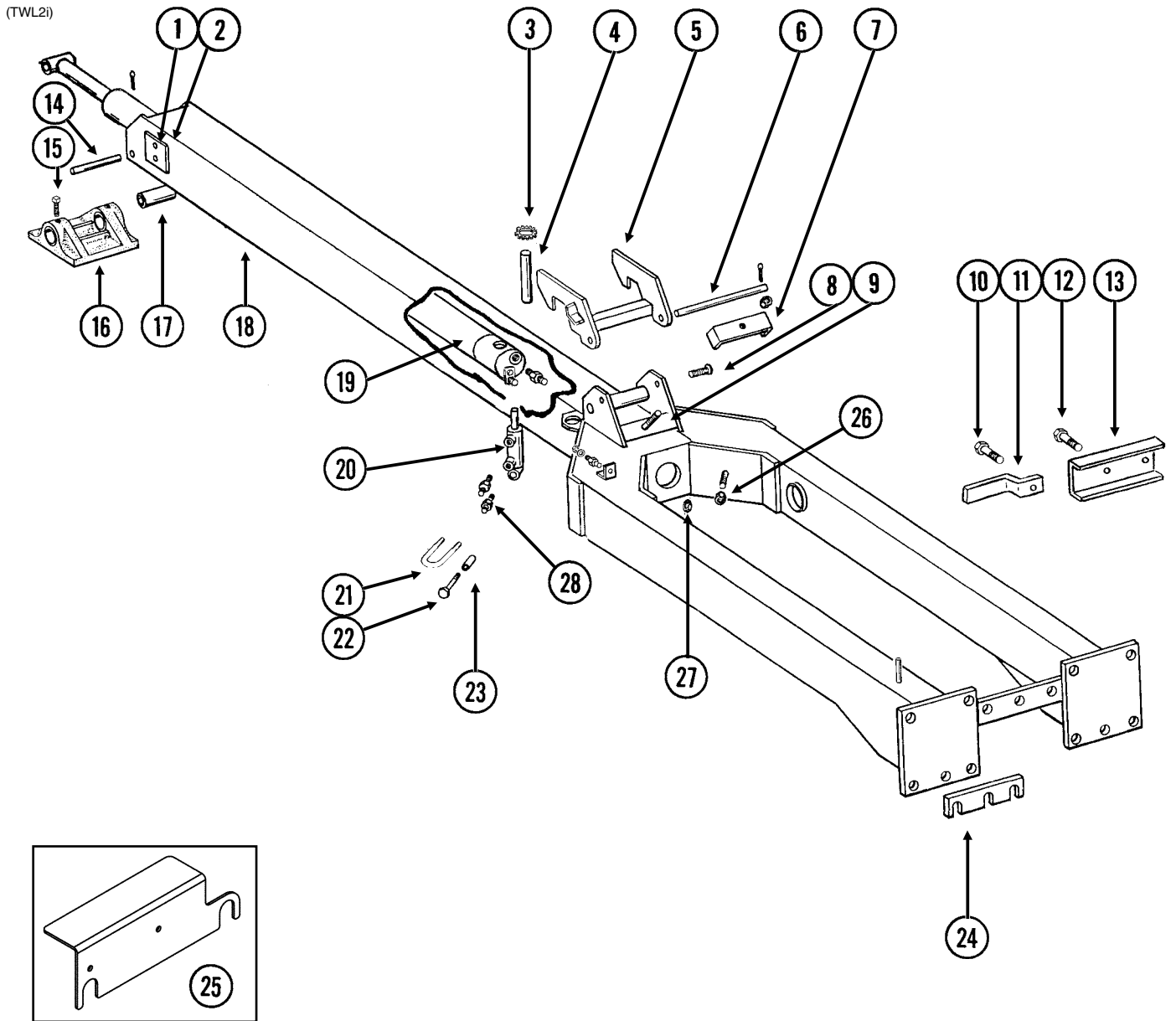
This page left blank intentionally.

PHA038/PHA025(TWL11/WGN47a/B0292/TWL1j)



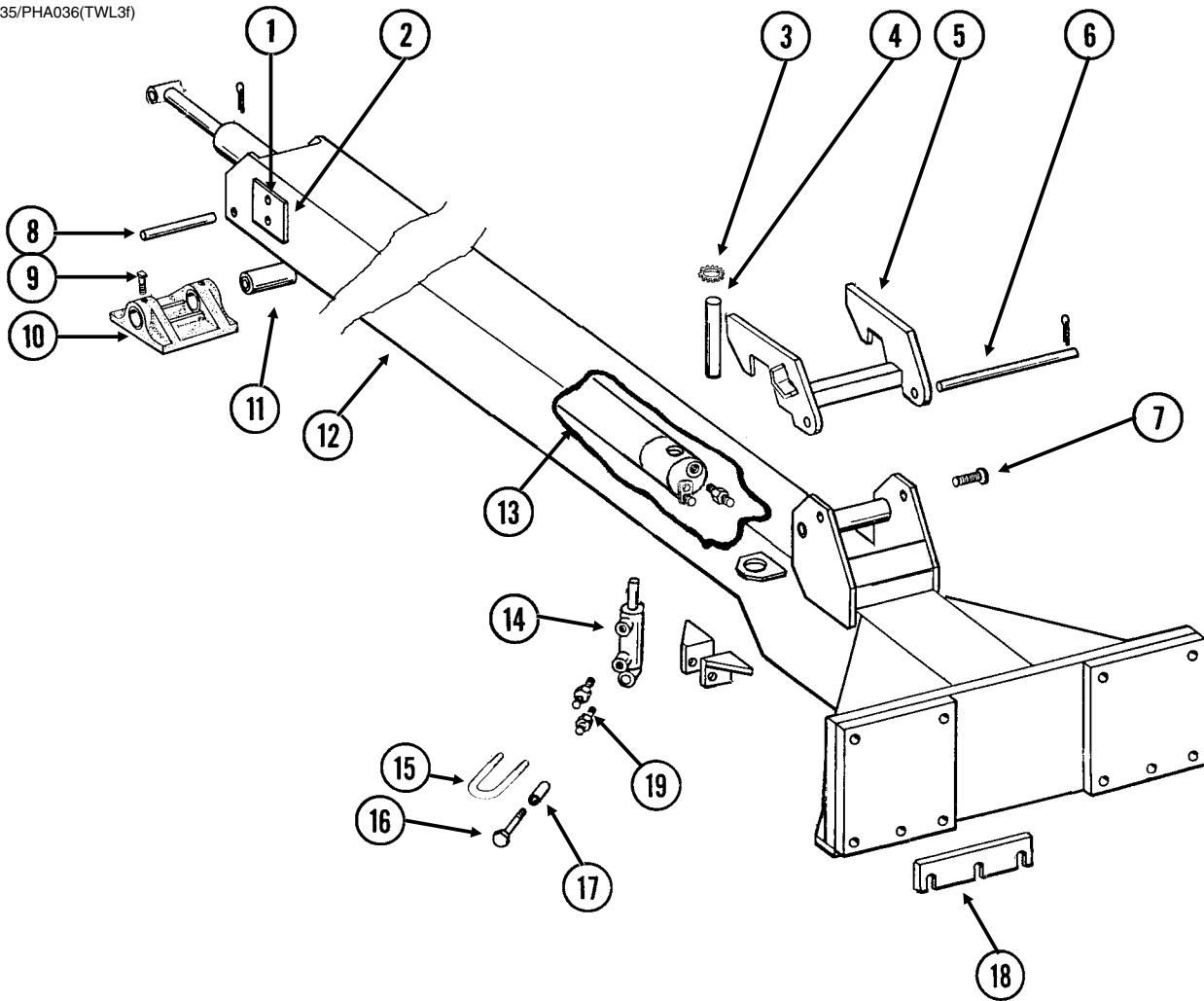
ITEM	PART NO.	QTY.	DESCRIPTION
1	GB0237	1	Clevis, Single (1 3/4" Hole)
2	GA9837	-	Hitch Mount, 16 Row 30"
3	G10169	1	Hex Head Cap Screw, 1 1/4"-7 x 6"
	G10157	1	Lock Nut, 1 1/4"-7
4	G10802	11	Hex Head Cap Screw, 3/4"-10 x 2 3/4"
	G10231	11	Lock Washer, 3/4"
	G10105	11	Hex Nut, 3/4"-10
5	GD5173	1	Pin, 1 1/4" x 5 1/8"
	G10462	2	Cotter Pin, 3/16" x 2"
6	G10009	9	Hex Head Cap Screw, 5/8"-11 x 2 1/2"
	G10230	9	Lock Washer, 5/8"
	G10104	9	Hex Nut, 5/8"-11
7	GA13986	1	Jack Assembly Complete
	GA4995	-	Detent Pin Assembly
	GR0516	-	Crank Assembly
	GR0515	-	Bevel Gear Set, Includes: (2) Bevel Gears, (1) Gear Pin, (1) Groove Pin
8	GA9836	1	Hitch Mount, 12 Row 30" And 12 Row 36"/38" ("Y" Hitch Only)
9	GD8260	1	Hose Holder
10	GA7022	1	Detent Pin W/Chain (Transport Latch Locking Pin)
11	---		See "Transport Latch Cylinder" (Located in M0236-02)
12	G10006	1	Hex Head Cap Screw, 5/8"-11 x 2 1/4"
	GB0218	1	Bushing, 2 1/32" I.D. x 7/8" O.D. x 1 9/32" Long
	GD7805	1	Special Washer, 5/8", Hardened
	G10107	1	Lock Nut, 5/8"-11

ITEM	PART NO.	QTY.	DESCRIPTION
13	GA7016	1	Catch Bar
14	GD5857	1	Spring
15	GA7433	1	Transport Latch
16	G10765	-	Spring Pin, 1/4" x 1"
17	G10062	1	Hex Head Cap Screw, 3/8"-16 x 3"
	GD2971-09	1	Sleeve, 2" Long
	G10108	1	Lock Nut, 3/8"-16
18	G11389	1	Flat Washer, 1/2" Plated SAE
	G10111	1	Lock Nut, 1/2"-13
19	GD7137	1	Pin, 3/4" x 3 3/8"
	G10457	2	Cotter Pin, 5/32" x 1 1/2"
20	GD8188	-	Hose Clamp, 7/8" x 3" x 5 3/8"
	GD8189	-	Rubber Strip, 3/8"
21	GD5875	2	Hose Clamp, 9/16" x 2 1/2" x 2"
22	GD9953	3	U-Bolt, 3" x 4" x 5/8"-11
	G11391	1	Flat Washer, 9/8" SAE
	G10230	6	Lock Washer, 5/8"
	G10104	6	Hex Nut, 5/8"-11
23	---	-	See "Hose Take-Up" on page 9
24	GA4418	1	Roller W/Bronze Bushings, 12 Row "Y" Hitch
	GA4842	-	Roller W/Bronze Bushings, 12 Row "T" Hitch And 16 Row "T" Hitch
	GD6556	1	Bronze Bushing
25	G10108	1	Lock Nut, 3/8"-16
26	G10111	1	Lock Nut, 1/2"-13
27	G10026	1	Hex Head Cap Screw, 3/4"-10 x 2"
	G10112	1	Lock Nut, 3/4"-10
28	GA5842	1	Bracket, Jack Mount
	GD8189	-	Rubber Strip, 3/8"
29	GA13768	1	Safety Pin, 12 3/4", 12 Row 30", 12 Row 36"/38" ("Y" Hitch Only)
	GA4845	-	Safety Pin, 14 3/4", 16 Row 30"
	GD2558	-	Lynch Pin, 1/4"
	GD2557	-	Lynch Pin, 7/16"
30	G10016	4	Hex Head Cap Screw, 1/2"-13 x 2"
	G11389	4	Flat Washer, 1/2" Plated SAE
31	G10017	8	Hex Head Cap Screw, 1/2"-13 x 1 1/2", 12 Row
	G10016	10	Hex Head Cap Screw, 1/2"-13 x 2", 16 Row
	G10071	8-10	Serrated Flange Nut, 1/2"-13
32	GA7029	2	Wear Mount, 12 Row 30", 12 Row 36"/38" ("Y" Hitch Only)
	GA7084	-	Wear Mount, L.H., 16 Row 30"
	GA7085	-	Wear Mount, R.H., 16 Row 30"
	GA7083	-	Wear Pad Retainer, 16 Row 30"
33	GD5154	-	Shim, 4" x 4" (As Required), All Sizes
	GD3501	-	Shim, 4" x 6" (As Required), 16 Row 30"
34	GD9959	-	Wear Pad, Nylatron, 4" x 4" (As Required), All Sizes
	GD9960	-	Wear Pad, Nylatron, 4" x 6" (As Required), 16 Row 30"
35	GD7519	3	Shim, 16 Gauge (16 Row Only)
	GD7518	1	Shim, 3/8" (16 Row Only)
36	G10014	4	Hex Head Cap Screw, 1/2"-13 x 1"
	G10228	4	Lock Washer, 1/2"
	G11389	4	Flat Washer, 1/2" Plated SAE
37	A7061	-	Outer Hitch, "T", 121", 12 Row 30" (Non-Stock Item)
	A7044	-	Outer Hitch, "Y", 121", 12 Row 36"/38" (Non-Stock Item)
	A7073	-	Outer Hitch, "T", 151 1/2", 16 Row 30" (Non-Stock Item)
38	GD7251	1	Pin, 1 1/4" x 14", 12 Row "T" Hitch And 16 Row "T" Hitch
	GD5804	-	Pin, 1 1/4" x 12", 12 Row "Y" Hitch
	G10468	2	Pin, 3/8" x 2"
39	GA11528	1	Bracket
40	GD16642	2	U-Bolt, 3" x 4" x 1/2"-13
	G10228	4	Lock Washer, 1/2"
	G10102	4	Hex Nut, 1/2"-13
41	GB0292	-	Hitch Clevis, Single (2" Hole)



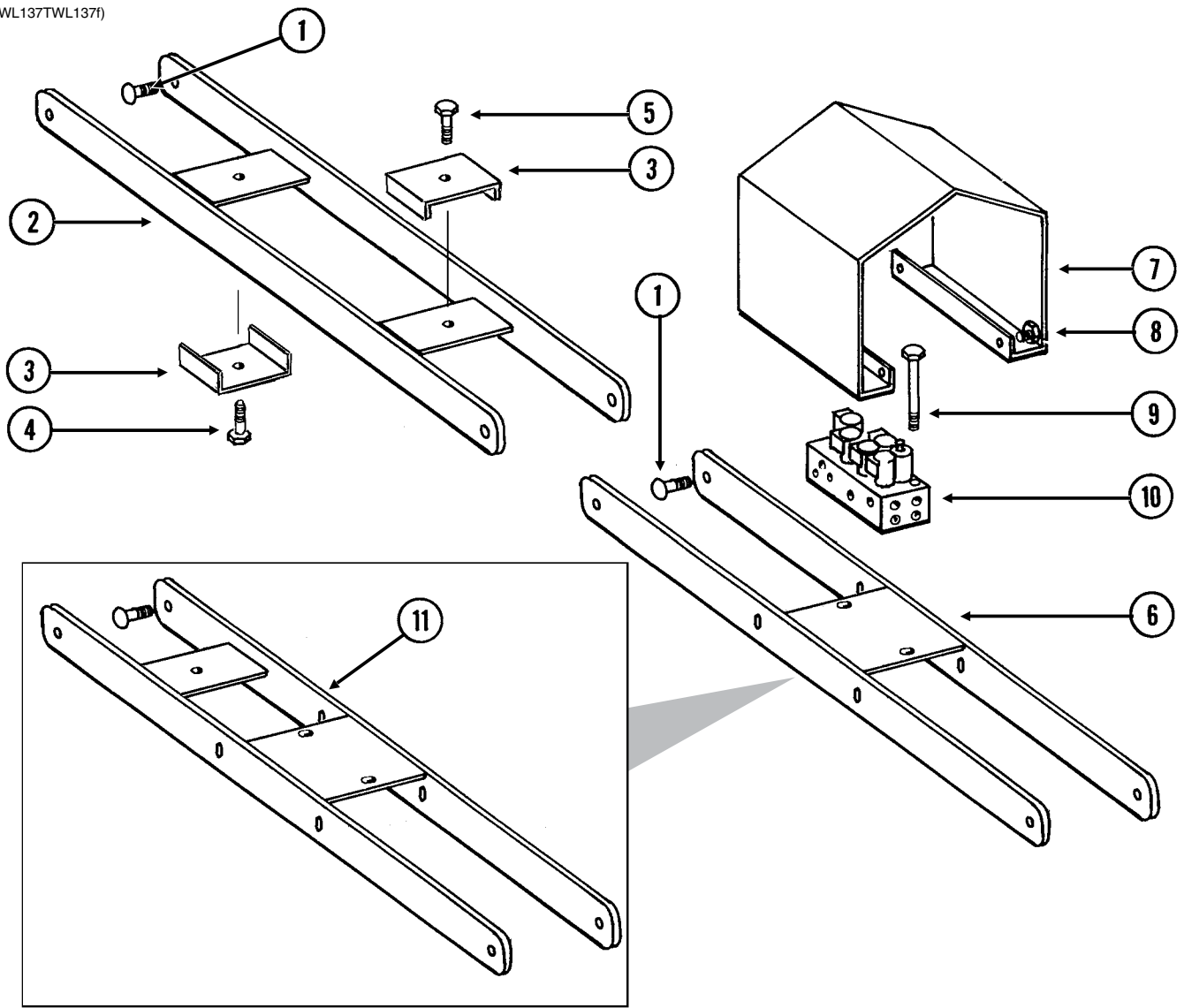
ITEM	PART NO.	QTY.	DESCRIPTION
1	G10014 G10228	4 4	Hex Head Cap Screw, 1/2"-13 x 1", 12 Row 36"/38" Lock Washer, 1/2", 16 Row 30"
2	GD9959 GD5154	2 4-6	Wear Pad, Nylatron, 4" x 4" Shim, 4" x 4"
3	G10894	-	External Washer
4	GD3537-17	1	Shaft, 1 1/4" x 6 3/8", 12 Row 36"/38"
5	GA7423 G10641	1 -	Tongue Hook W/Grease Fittings, 12 Row Grease Fitting, 1/8" NPT
6	GD5804 G10468	1 2	Pin, 1 1/4" x 12", 12 Row Cotter Pin, 3/8" x 2"
7	GD8188 GD8189	- -	Hose Clamp, 7/8" x 3" x 5 3/8" Rubber Strip, 3/8"
8	---	-	See "Hose Take-Up" on page 9
9	G11169 G10111	1 1	Hex Head Cap Screw, 1/2"-13 x 3 1/2" Lock Nut, 1/2"-13
10	G10004 G10229 G10101	1 1 1	Hex Head Cap Screw, 3/8"-16 x 1 1/4" Lock Washer, 3/8" Hex Nut, 3/8"-16
11	GD10650	1	Hose Clamp
12	G10003 G11387 G10108	1 1 1	Hex Head Cap Screw, 3/8"-16 x 1 1/2" Flat Washer, 3/8" SAE Lock Nut, 3/8"-16
13	GD10664	1	Shield (If Applicable)
14	GD5173 G10462	1 1	Pin, 1 1/4" x 5 1/8" Cotter Pin, 3/16" x 2"
15	G10131	1	Square Head Set Screw, 5/16"-18 x 3/4"
16	GB0246	1	Shoe
17	GD3537-11	1	Shaft, 1 1/4" x 7", 12 Row
18	A7428	-	Inner Hitch, 191 5/8", 12 Row 36"/38" (Non-Stock Item)
19	---	-	See "Tongue Cylinder, 12 Row 30" with "T" Hitch and 12 Row 36"/38" with "Y" Hitch" on page 26
20	---	-	See "Tongue Lock Cylinder" (Located in M0236-02)
21	GD10530 G10229 G11091	1 2 2	U-Bolt, 2 1/8" x 1 7/8" x 3/8"-16 Lock Washer, 3/8" Serrated Flange Nut, 3/8"-16
22	G10585 G11389 G10071	1 1 1	Hex Head Cap Screw, 1/2"-13 x 3 1/4" Flat Washer, 1/2" Plated SAE Serrated Flange Nut, 1/2"-13
23	GD10538-01	1	Sleeve
24	GD13543 GD13544 GD13545 GD13546	1 1 1 1	Shim, 2 1/2" x 10", 7 Gauge Shim, 2 1/2" x 10", 10 Gauge Shim, 2 1/2" x 10", 12 Gauge Shim, 2 1/2" x 10", 14 Gauge
25	GD18116	1	Shield (If Applicable)
26	GD5875 G10108	1 1	Hose Clamp, 9/16" x 2 1/2" x 2" Lock Nut, 3/8"-16
27	GD8189 GD8188 G10111	1 1 1	Rubber Strip, 3/8" Hose Clamp, 7/8" x 3" x 5 3/8" Lock Nut, 1/2"-13
28	G6400-06-08 GR1037	2 -	Connector W/O-Ring, 9/16"-18 Male JIC To 3/4"-16 O-Ring O-Ring

PHA035/PHA036(TWL3f)



ITEM	PART NO.	QTY.	DESCRIPTION
1	G10014	4	Hex Head Cap Screw, ½"-13 x 1", 12 Row 30"
	G10017	4	Hex Head Cap Screw, ½"-13 x 1½", 12 Row 36"/38" And 16 Row 30"
	G10228	4	Lock Washer, ½", 12 Row 36"/38" And 16 Row 30"
2	GD9959	2	Wear Pad, Nylatron, 4" x 4"
	GD5154	4-6	Shim, 4" x 4"
3	G10894	-	External Washer
4	GD3537-17	1	Shaft, 1¼" x 6¾", 12 Row 30"
	GD3537-18	-	Shaft, 1¼" x 7¾", 12 Row 36"/38" And 16 Row 30"
5	GA7423	1	Tongue Hook W/Grease Fittings, 12 Row 30"
	GD7883	-	Pin, 1¼" x 14½", 12 Row 36"/38" And 16 Row 30"
	G10641	-	Grease Fitting, ⅛" NPT
6	GD5804	1	Pin, 1¼" x 12", 12 Row 30"
	G10468	2	Cotter Pin, ⅜" x 2"
7	---	-	See "Hose Take-Up" on page 9
8	GD5173	1	Pin, 1¼" x 5⅞"
	G10462	1	Cotter Pin, ⅜" x 2"
9	G10131	1	Square Head Set Screw, ⅝"-18 x ¾"
10	GB0246	1	Shoe
11	GD3537-11	1	Shaft, 1¼" x 7", 12 Row 30"
	GD3537-12	-	Shaft, 1¼" x 8", 12 Row 36"/38" And 16 Row 30"
12	A7432	-	Inner Hitch, 145⅜", 12 Row 30" (Shown) (Non-Stock Item)
13	---	-	See "Tongue Cylinder, 12 Row 30" with "T" Hitch and 12 Row 36"/38" with "Y" Hitch" on page 26 See "Tongue Cylinder, 16 Row 30" with "T" Hitch" on page 27
14	---	-	See "Tongue Lock Cylinder" (Located in M0236-02)
15	GD10530	1	U-Bolt, 2⅛" x 1⅞" x ⅜"-16
	G11091	2	Serrated Nut, ⅜"
	G10101	2	Hex Nut, ⅜"-16
16	G10585	1	Hex Head Cap Screw, ½"-13 x 3¼"
	G11389	1	Flat Washer, ½" Plated SAE
	G10071	1	Serrated Flange Nut, ½"-13
17	GD10538-01	1	Sleeve
18	GD13543	1	Shim, 2½" x 10", 7 Gauge
	GD13544	1	Shim, 2½" x 10", 10 Gauge
	GD13545	1	Shim, 2½" x 10", 12 Gauge
19	G6400-06-08	2	Connector W/O-Ring, ⅜"-18 Male JIC To ¼"-16 O-Ring
	GR1037	-	O-Ring

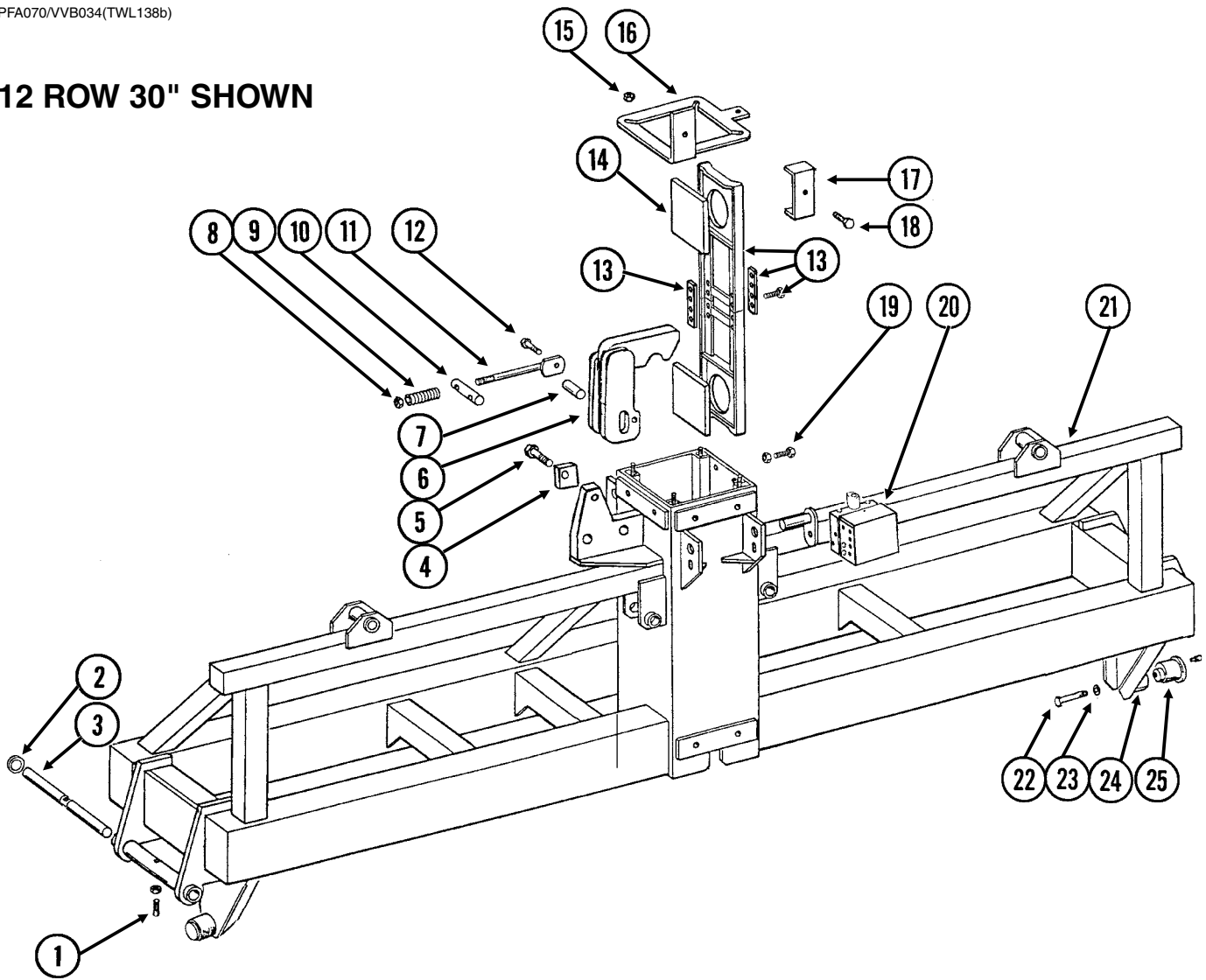
(TWL137TWL137f)



ITEM	PART NO.	QTY.	DESCRIPTION
1	G10689	6	Carriage Bolt, 5/8"-11 x 2"
	GB0218	6	Bushing, 2 1/32" I.D. x 7/8" O.D. x 1 9/32" Long
	GD7805	6	Special Washer, 5/8", Hardened
	G10107	6	Lock Nut, 5/8"-11
2	GA7049	-	Take-Up, 56 1/4", 12 Row 30" "T" Hitch and 12 Row 36"/38" "Y" Hitch
	GA7074	-	Take-Up, 67 5/8", 16 Row 30" "T" Hitch
3	GD8188	2	Hose Clamp, 7/8" x 3" x 5 3/8"
	GD8189	2	Rubber Pad
4	G10581	1-2	Hex Head Cap Screw, 1/2"-13 x 2 1/4"
	G10053	-	Hex Head Cap Screw, 1/2"-13 x 2 1/2"
	G10111	1	Lock Nut, 1/2"-13
5	G11170	1	Hex Head Tap Bolt, 1/2"-13 x 3 1/2"
	G10111	1	Lock Nut, 1/2"-13
6	GA7075	-	Take-Up, 67 5/8", 16 Row 30" "T" Hitch
7	GD9952	1	Cover, 12 Row 30" "T" Hitch, 12 Row 36"/38" "Y" Hitch And 16 Row 30" "T" Hitch (Shown)
8	G10004	4	Hex Head Cap Screw, 3/8"-16 x 1 1/4"
	G11387	8	Flat Washer, 3/8" SAE
	G11091	4	Serrated Flange Nut, 3/8"-16
9	G10172	2	Hex Head Cap Screw, 3/8"-16 x 5"
	G11387	2	Flat Washer, 3/8" SAE
	G10108	2	Lock Nut, 3/8"-16
10	---	-	See "Valve Block - Located On Hitch" (Located in M0236-02)
11	GA7050	-	Take-Up, 56 1/4", 12 Row 30" "T" Hitch And 12 Row 36"/38" "Y" Hitch

PFA070/VVB034(TWL138b)

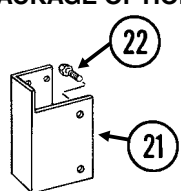
12 ROW 30" SHOWN



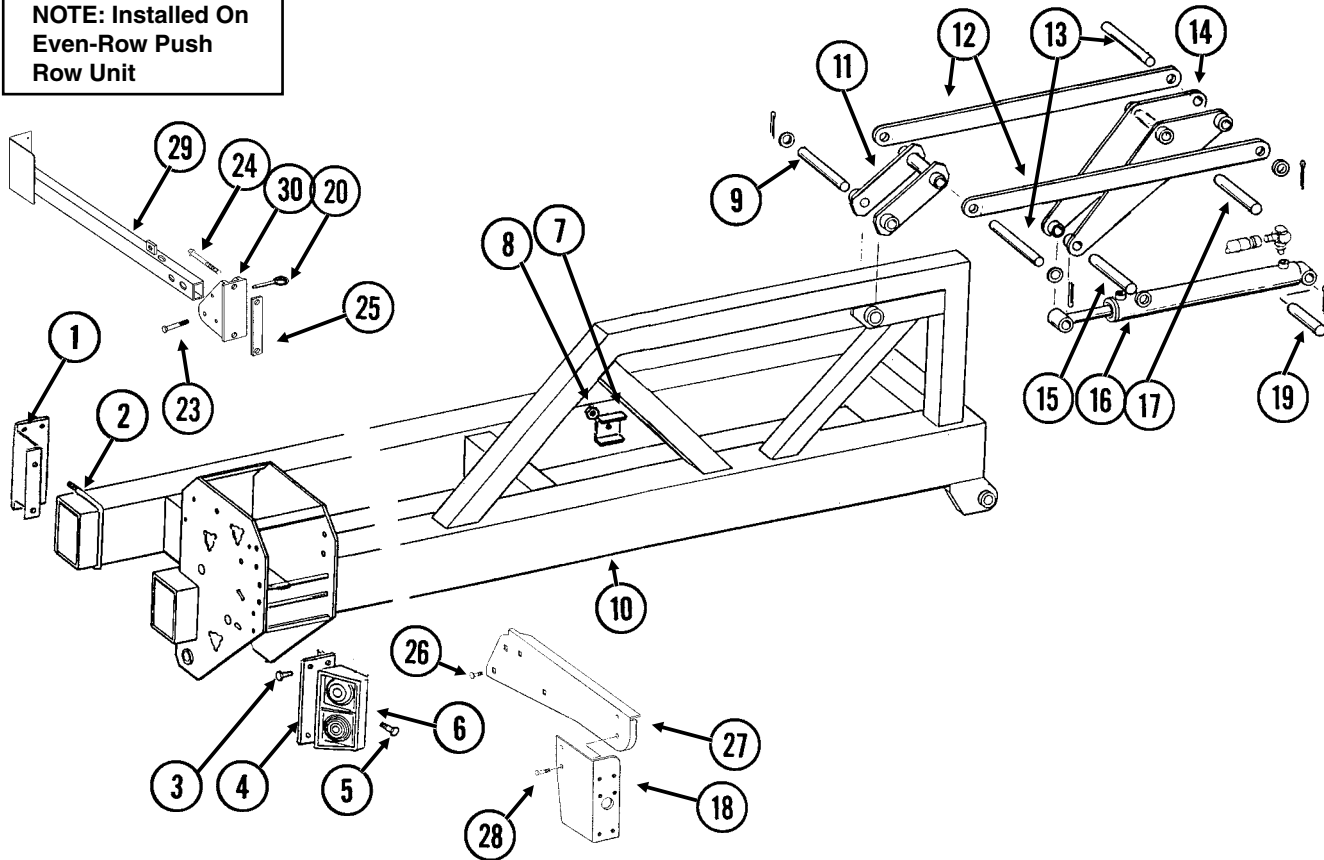
ITEM	PART NO.	QTY.	DESCRIPTION
1	G10102	1	Hex Nut, 1/2"-13
	G10828	1	Hex Socket Set Screw, 1/2"-13 x 1 1/4"
2	G10404	-	Machine Bushing, 3 1/8" x 2 1/8" x 3/16" (As Required)
	G10234	-	Machine Bushing, 2 1/8", 10 Gauge (As Required)
	G10336	-	Machine Bushing, 2 1/8", 14 Gauge (As Required)
3	GD10531	1	Hinge Pin, 2 1/8" x 25 3/4"
4	GD10492	2	Adjustment Block
5	G10085	-	Hex Head Cap Screw, 3/4"-10 x 3 3/4"
	G11392	-	Flat Washer, 3/4" SAE
	G10112	-	Lock Nut, 3/4"-10
6	GA7390	-	Safety Hook
7	GD9898	1	Pin, 1 1/4" x 2 15/16"
8	G11391	2	Flat Washer, 5/8" SAE
	G10107	2	Lock Nut, 5/8"-11
9	GD10006	2	Spring
10	GD9870	1	Pin, 1 1/4" x 6"
11	GA6943	2	Spring Rod
12	G10037	2	Hex Head Cap Screw, 1/2"-13 x 1 1/4"
	G11389	2	Flat Washer, 1/2" Plated SAE
	G10228	2	Lock Washer, 1/2"
	GD7904-02	2	Sleeve, 1/2" x 1/2" Long
13	GA7579	4	Pad Holder W/Bars
	GD10706	-	Bar, 1 1/4" x 6" x 1/4" Thick
	GD10707	-	Bar, 1 1/4" x 6" x 3/8" Thick
	G10001	-	Hex Head Cap Screw, 3/8"-16 x 1"
14	GD25374	8	Wear Pad
15	GD7805	4	Special Washer, 5/8", Hardened
	G10104	4	Hex Nut, 5/8"-11
16	GD9968	1	Cap
17	GD8188	1	Hose Clamp, 7/8" x 3" x 5 3/8"
	GD8189	1	Rubber Pad
18	G10053	1	Hex Head Cap Screw, 1/2"-13 x 2 1/2"
	G10228	1	Lock Washer, 1/2"
	G10102	1	Hex Nut, 1/2"-13
19	G10543	16	Hex Head Cap Screw, 3/4"-10 x 3", Full Thread
	G10105	16	Hex Nut, 3/4"-10
20	---	-	See "Valve Blocks - Located On R.H. Rear Center Frame" (Located in M0236-02)
21	A7393	-	Frame W/Cam Follower Mounts, 136" (Non-Stock Item)
	GA6929	-	Cam Follower Mount, L.H.
	GA6928	-	Cam Follower Mount, R.H.
22	G10026	2	Hex Head Cap Screw, 3/4"-10 x 2"
23	GB0409	2	Spring Washer
24	GD10532	2	Sleeve
25	GA6497	2	Cam Follower W/Grease Fitting
	G10640	-	Grease Fitting, 1/4"-28

(TWL180a/TWL139g)

**WITH INTERPLANT®
PACKAGE OPTIONS**



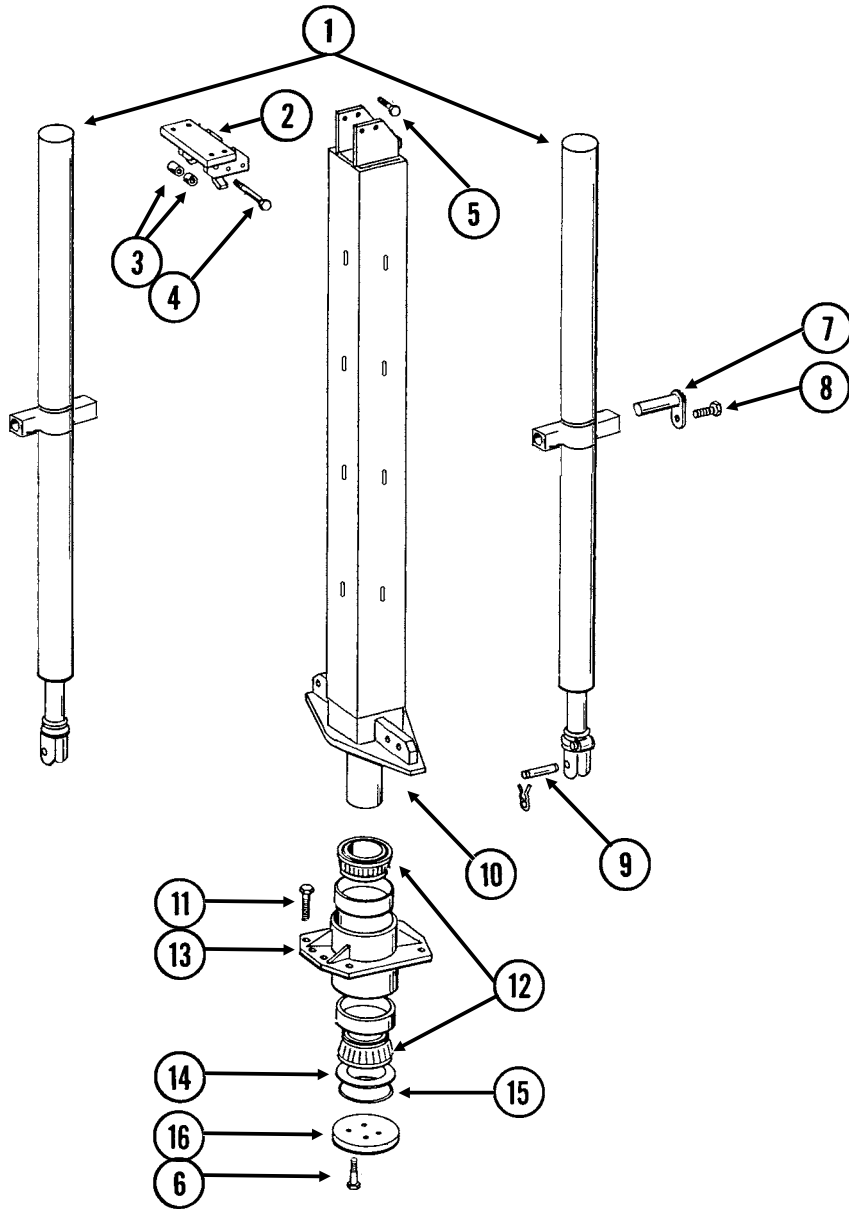
**NOTE: Installed On
Even-Row Push
Row Unit**



ITEM	PART NO.	QTY.	DESCRIPTION
1	GA6792	1	Light Bracket (Wide Row Sizes Only)
2	GD1113	1	U-Bolt, 5" x 7" x 5/8"-11
	G10230	2	Lock Washer, 5/8"
	G10104	2	Hex Nut, 5/8"-11
3	G10001	2	Hex Head Cap Screw, 3/8"-16 x 1"
	G11387	1	Flat Washer, 3/8" SAE
	G10229	2	Lock Washer, 3/8"
	G10101	2	Hex Nut, 3/8"-16
4	GD9681	1	Light Bracket (Wide Row Sizes Only)
5	G10064	8	Hex Head Cap Screw, 1/4"-20 x 1"
	G10110	8	Lock Nut, 1/4"-20, Grade B
6	---	-	See "Electrical Components" (Located in M0236-02)
7	GD5875	-	Hose Clamp, 9/16" x 2 1/2" x 2"
8	G10108	-	Lock Nut, 3/8"-16

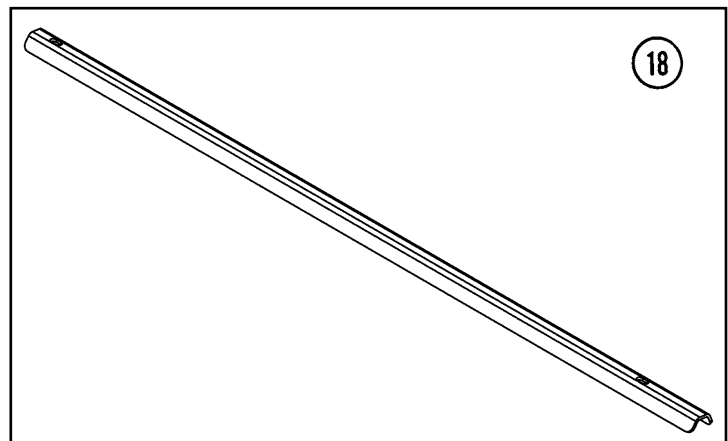
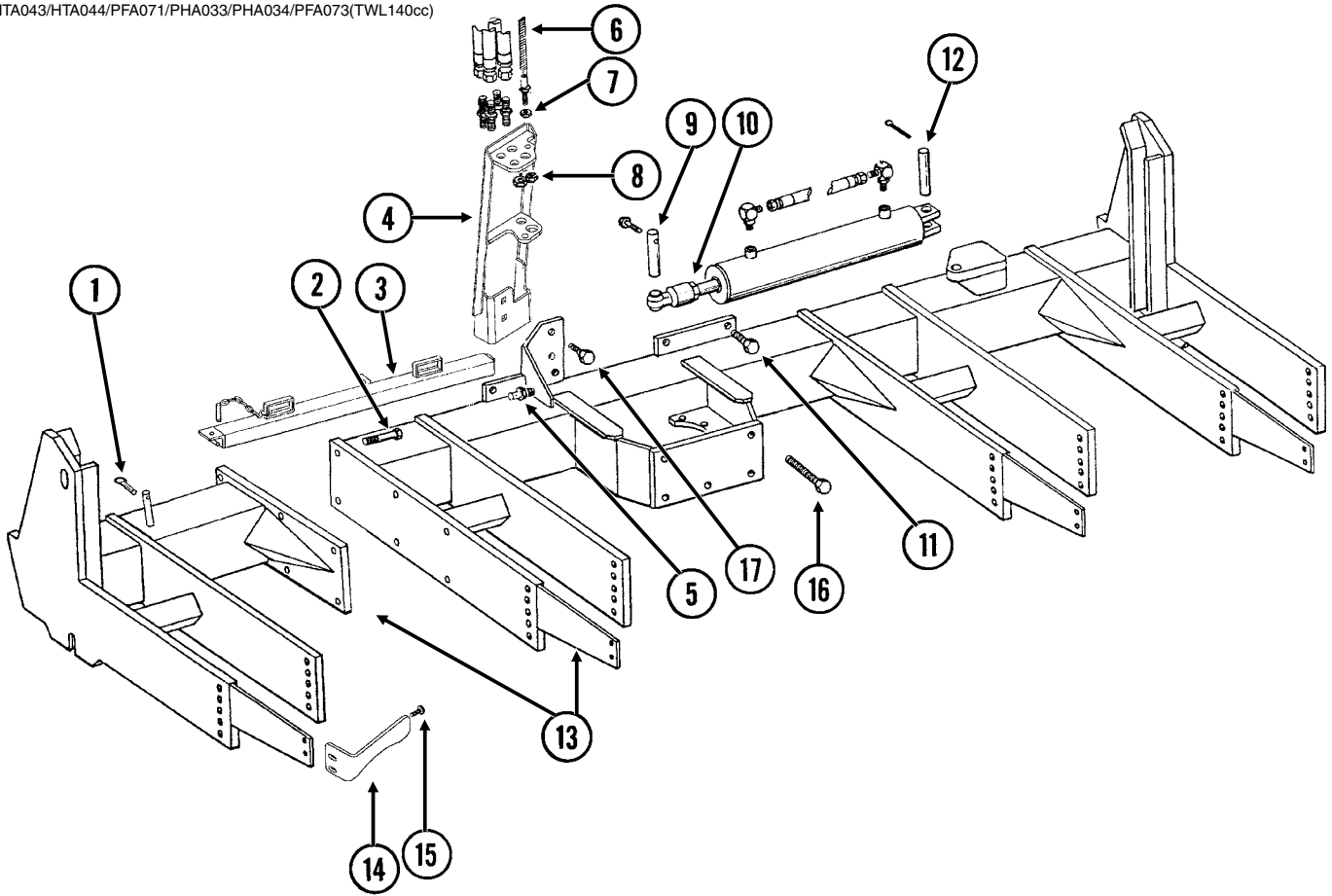
ITEM	PART NO.	QTY.	DESCRIPTION
9	GD9963	1	Pin, 1¼" x 9"
	G10460	2	Cotter Pin, ¼" x 2"
10	A6904	-	Wing, R.H., 119¼", 12 Row 30" (Non-Stock Item)
	A6905	-	Wing, L.H., 119¼", 12 Row 30" (Non-Stock Item)
	A7028	-	Wing, R.H., 152", 12 Row 36"/38" (Non-Stock Item)
	A7027	-	Wing, L.H., 152", 12 Row 36"/38" (Non-Stock Item)
	A6892	-	Wing, R.H., 179¼", 16 Row 30" (Two Wheel Towers Per Wing) (Non-Stock Item)
	A6893	-	Wing, L.H., 179¼", 16 Row 30" (Two Wheel Towers Per Wing) (Non-Stock Item)
11	GA7018	1	Link
12	GD9956	2	Strap, 41", 12 Row 30" And 16 Row 30"
	GD10049	2	Strap, 56", 12 Row 36"/38"
13	GD9964	2	Pin, 1¼" x 10½"
	G10159	4	Machine Bushing, 1¼", 10 Gauge
	G10460	4	Cotter Pin, ¼" x 2"
14	GA7019	1	Toggle Link
15	GD4108	1	Pin, 1¼" x 7"
	G10159	2	Machine Bushing, 1¼", 10 Gauge
	G10460	2	Cotter Pin, ¼" x 2"
16	---	-	See "Wing Lock Cylinder" (Located in M0236-02)
17	GD9955	1	Pin, 1¼" x 7"
	G10606	2	Spring Pin, ¼" x 2"
18	GD12724	1	Bracket
19	GD0826	2	Pin, 1¼" x 5½"
	G10460	4	Cotter Pin, ¼" x 2"
20	G10874	1	Detent Pin, ½" x 3½" Grip
21	GD12703	1	Push Row Unit Light Bracket
22	G10001	2	Hex Head Cap Screw, ⅜"-16 x 1"
	G10229	2	Lock Washer, ⅜"
	G10101	2	Hex Nut, ⅜"-16
23	G10033	1	Hex Head Cap Screw, ½"-13 x 3½"
	G10111	1	Lock Nut, ½"-13
24	G10012	2	Hex Head Cap Screw, ⅝"-11 x 6½"
	G10230	2	Lock Washer, ⅝"
	G10104	2	Hex Nut, ⅝"-11
25	GD1908	1	Mounting Bracket
26	G10305	4	Carriage Bolt, ⅜"-16 x 1"
	G11091	4	Serrated Flange Nut, ⅜"-16
27	GD15950	1	Light Mount Extension
28	G10064	2	Hex Head Cap Screw, ¼"-20 x 1"
	G10227	2	Lock Washer, ¼"
	G10103	2	Hex Nut, ¼"-20
29	GA9840	1	Light Bracket
30	GB0309	1	Light Mount Bracket
A	G7698X	-	Push Row Unit Mounted Light Bracket Package (Items 21 And 22 On this page and 42" Harness Extension, item 5 On Electrical Components page in M0236-02)

PFA067/PFA068(TWL7c)



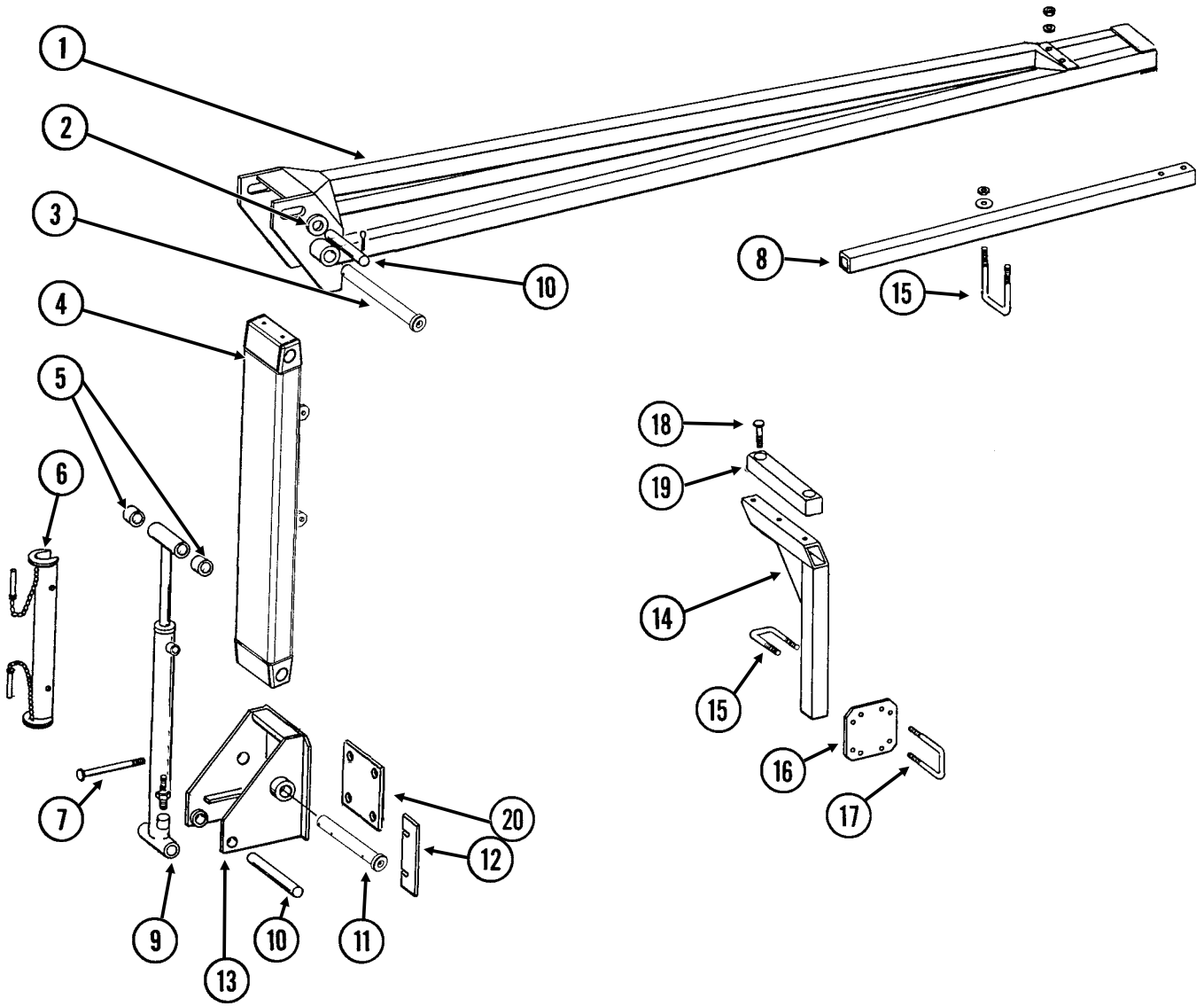
ITEM	PART NO.	QTY.	DESCRIPTION
1	---	-	See "Center Lift Cylinder, All Sizes" on page 23
2	GA6964	1	Hook Strap
3	GD10447	1	Sleeve, 3 ⁵ / ₈ "
	GD10446	1	Sleeve, 3 ¹³ / ₁₆ "
4	G10011	1	Hex Head Cap Screw, 5/8"-11 x 5 1/2"
	G10107	1	Lock Nut, 5/8"-11
5	G10689	4	Carriage Bolt, 5/8"-11 x 2"
	G10107	4	Lock Nut, 5/8"-11
6	G10027	4	Hex Head Cap Screw, 3/4"-10 x 2 1/2"
	GD2169	1	Special Washer, ²⁵ / ₃₂ " I.D. x 1 1/4" O.D., Hardened
7	GA5121	4	Pin, 2 1/8"
8	G10017	4	Hex Head Cap Screw, 1/2"-13 x 1 1/2"
	G11389	4	Flat Washer, 1/2" Plated SAE
	G10228	4	Lock Washer, 1/2"
	G10102	4	Hex Nut, 1/2"-13
9	GR0375	2	Pin, 1" x 3 1/2"
	GR0193	4	Hair Pin Clip
10	GA7540	1	Center Post
11	G10441	8	Hex Head Cap Screw, 7/8"-9 x 3", Grade 8
	GD10063	8	Hardened Washer, 7/8"
	G11053	8	Hex Nut, 7/8"-9, Grade 8
12	GA7096	2	Cone
13	GA7067	1	Bearing Housing W/Cups, Less Grease Fitting
	GD10011	2	Cup
	G10779	1	Grease Fitting, 90°, 1/4"-28
14	GD10012	-	Shim, .005" Thick (As Required)
	GD10013	-	Shim, .020" Thick (As Required)
	GD10014	-	Shim, .007" Thick (As Required)
15	GD9130	1	O-Ring
16	GD9636	1	Bearing Cap

HTA043/HTA044/PFA071/PHA033/PHA034/PFA073(TWL140cc)



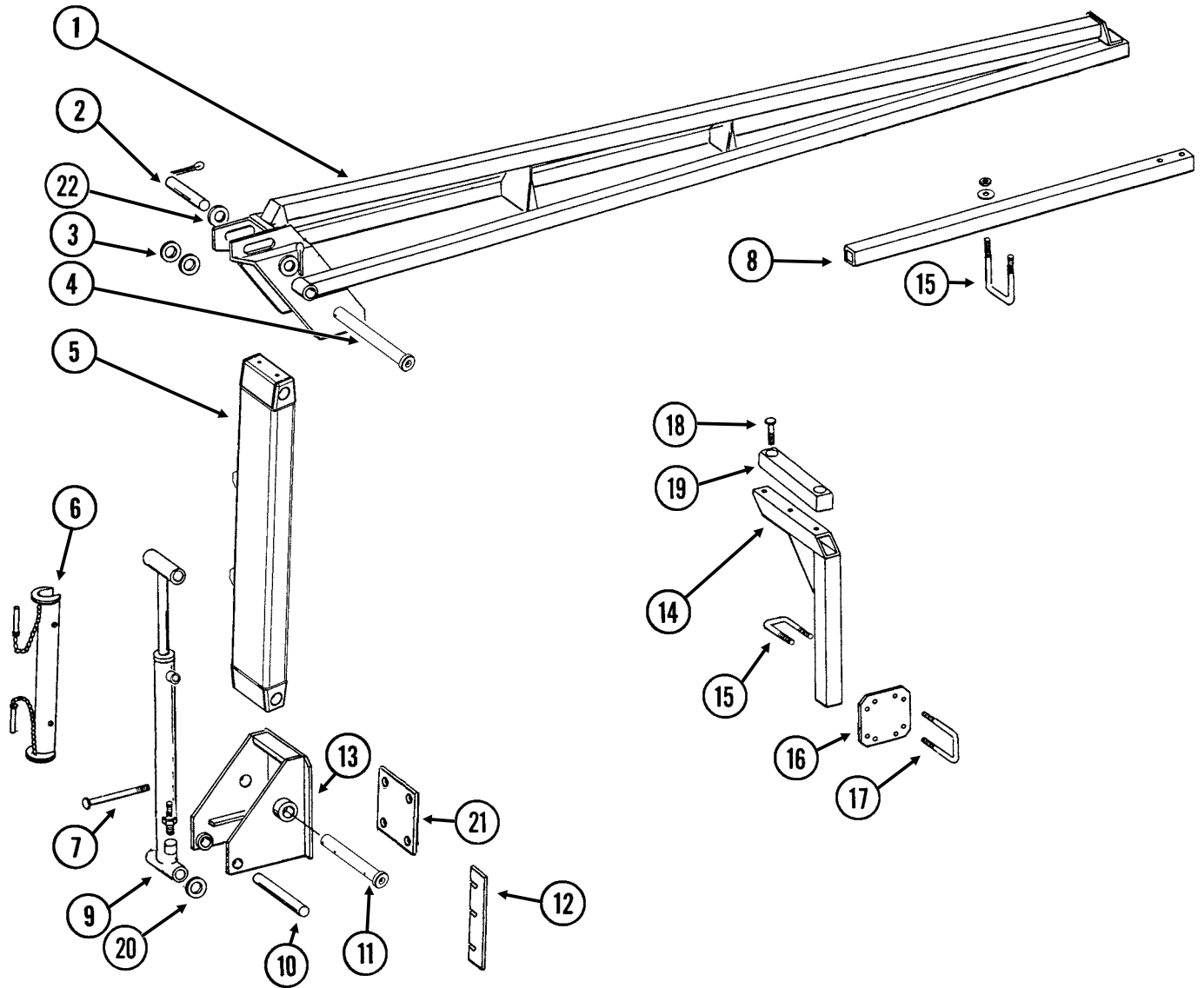
ITEM	PART NO.	QTY.	DESCRIPTION
1	GD2558	1	Lynch Pin, 1/4"
2	G10802	6	Hex Head Cap Screw, 3/4"-10 x 2 3/4"
	G10028	-	Hex Head Cap Screw, 3/4"-10 x 3"
	G10231	6	Lock Washer, 3/4"
	G10105	6	Hex Nut, 3/4"-10
3	GA7098	1	Manual Safety Lockup W/Detent Pin
	GA7022	1	Detent Pin W/Chain
4	GA11200	1	Bulkhead Mount
5	GD19655	1	Pin
	G10237	1	Lock Washer, 7/16"
	G10071	1	Serrated Flange Nut, 1/2"-13
6	GA6608	1	Cable Assembly, 12 Row 30" And 16 Row 30"
	GA7120	-	Cable, 12 Row 36"/38"
7	G10228	2	Lock Washer, 1/2"
	G10102	2	Hex Nut, 1/2"-13
8	G306-08	2	Lock Nut, 3/4"-16
	G306-10	2	Lock Nut, 7/8"-14
9	GD10092	1	Pin, 1 1/4" x 5 1/4"
	G10159	4	Bushing, 9/32" x 1 7/8"
	G10049	1	Hex Head Cap Screw, 3/8"-16 x 2 1/2"
	G10108	1	Lock Nut, 3/8"-16
10	---	-	See "Rotation Cylinder" (Located in M0236-02)
11	G10437	4	Hex Head Cap Screw, 3/4"-8 x 2 1/2", Grade 8, "Y" Hitch
	G10810	4	Hex Head Cap Screw, 3/4"-10 x 3 1/2", Grade 8, "T" Hitch
	GD2169	4	Special Washer, 25/32" I.D. x 1 1/4" O.D., Hardened
	G10436	4	Hex Nut, 3/4"-10
12	GD10064	1	Pin, 1 1/4" x 5 1/4", All sizes
	G10460	2	Cotter Pin, 1/4" x 2"
13	GA8062	-	Axle W/Stub Axle, 12 Row 30" And 16 Row 30"
	GA9883	-	Stub Axle, Narrow Row
	GA8063	-	Axle W/Stub Axle, 12 Row 36"/38"
	GA9882	-	Stub Axle, Wide Row
14	GD12543	-	Scraper
15	G10636	-	Carriage Bolt, 1/2"-13 x 1 1/2"
	G10071	-	Serrated Flange Nut, 1/2"-13
16	G10808	6	Hex Head Cap Screw, 1"-8 x 10", Grade 8, "Y" Hitch
	G10811	6	Hex Head Cap Screw, 1"-8 x 11", Grade 8, "T" Hitch
	G11394	6	Flat Washer, 1" SAE
	G10647	6	Hex Nut, 1"-8, Grade 8
17	G10636	-	Carriage Bolt, 1/2"-13 x 1 1/2"
	G10228	-	Lock Washer, 1/2"
	G10102	-	Hex Nut, 1/2"-13
18	GD18645	1	Cable Gaurd (If Applicable)

MKR019/MKR027(MKR14/A11590)



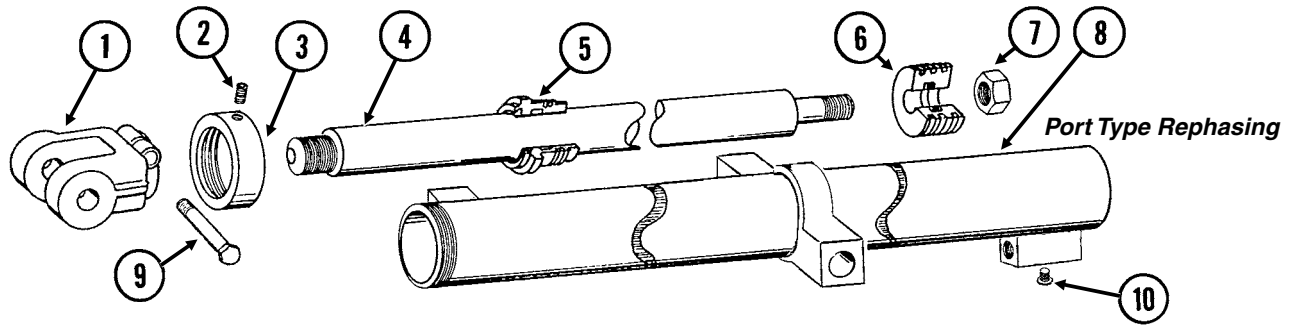
ITEM	PART NO.	QTY. (Per Assy.)	DESCRIPTION
1	GA4353 G10641	1 -	Arm W/Grease Fittings, Second Stage, 110", 12 Row 30" Grease Fitting, 1/8" NPT
2	G11396 G10159 G10322	- - -	Flat Washer, 1 1/4" SAE (As Required) Machine Bushing, 1 1/4", 10 Gauge (As Required) Machine Bushing, 1 1/4", 18 Gauge (As Required)
3	GA11766 G10640 G10463	- - -	Pin W/Grease Fitting, 1 1/4" x 1 13/16" Grease Fitting, 1/4"-28 Cotter Pin, 1/4" x 1 1/2"
4	GA11590	-	Arm, First Stage
5	GD0752-41	4	Sleeve, 1"
6	GA8170 G10536	1 -	Safety Lockup W/Detent Pins, 19 3/8" Detent Pin, 1/2" x 2 1/2" Grip
7	G10011 G10046 G10008 G11391 G10230 G10104	4 - - - 4 4	Hex Head Cap Screw, 5/8"-11 x 5 1/2" (If Applicable) Hex Head Cap Screw, 5/8"-11 x 5" (If Applicable) Hex Head Cap Screw, 5/8"-11 x 2" (If Applicable) Flat Washer, 5/8" SAE Lock Washer, 5/8" Hex Nut, 5/8"-11
8	GD0453-07 GD0453-04	1 -	Extension Tube, 45", 12 Row 30" Extension Tube, 60", 12 Row 30" (L.H. Even-Row Marker) (If Applicable)
9	---	-	See "Row Marker (Cushion) Cylinder, All Sizes" on page 28
10	GD2161 G10460	2 4	Pin, 1 1/4" x 8 1/4" Cotter Pin, 1/4" x 2"
11	GA11767 G10640 G10463	- - -	Pin W/Grease Fitting, 1 1/4" x 9 1/2" Grease Fitting, 1/4"-28 Cotter Pin, 1/4" x 1 1/2"
12	GD10792	-	Shim, 2 1/2" x 7 1/4", 16 Gauge (As Required)
13	GA5130	1	Mount
14	GA7042	1	Stand, 20" (12 Row 30")
15	GD2721 G10228 G10102	3 6 6	U-Bolt, 2" x 2" x 1/2"-13 Lock Washer, 1/2" Hex Nut, 1/2"-13
16	GD9981	1	Bar
17	GD4743 G11389 G10228 G10102	2 4 4 4	U-Bolt, 3" x 3" x 1/2"-13 Flat Washer, 1/2" Plated SAE Lock Washer, 1/2" Hex Nut, 1/2"-13
18	G10017 G11389 G10111	2 2 2	Hex Head Cap Screw, 1/2"-13 x 1 1/2" Flat Washer, 1/2" Plated SAE Lock Nut, 1/2"-13
19	GA9088	-	Molded Stop, 12 1/4" Long
20	GD13360	2	Plate, 6" x 6"

MKR019/MKR023MKR027(MKR15jj/A11569)



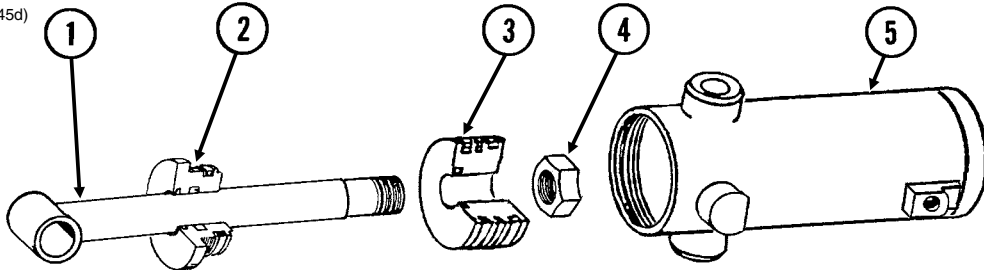
ITEM	PART NO.	QTY. (Per Assy.)	DESCRIPTION
1	GA7116	-	Arm, Second Stage, 138 1/4", 12 Row 36"/38"
	GA7118	-	Arm, Second Stage, 172 1/4", 16 Row 30"
2	GD1701	1	Pin, 1 1/4" x 6 1/2"
	G10460	2	Cotter Pin, 1/4" x 2"
3	G10979	4	Special Washer, 1 1/4" (As Required)
	G10159	-	Machine Bushing, 1 1/4", 10 Gauge (As Required)
	G10322	-	Machine Bushing, 1 1/4", 18 Gauge (As Required)
4	GA11768	-	Pin W/Grease Fitting, 1 1/4" x 13"
	G10640	-	Grease Fitting, 1/4"-28
	G10463	-	Cotter Pin, 1/4" x 1 1/2"
5	GA13759	-	Arm, First Stage
6	GA8170	1	Safety Lockup W/Detent Pins, 19 3/8"
	G10536	-	Detent Pin, 1/2" x 2 1/2" Grip
7	G10012	-	Hex Head Cap Screw, 5/8"-11 x 6 1/2" (If Applicable)
	G10068	-	Hex Head Cap Screw, 5/8"-11 x 6" (If Applicable)
	G10006	-	Hex Head Cap Screw, 5/8"-11 x 2 1/4" (If Applicable)
	GD7805	8	Special Washer, 5/8", Hardened
	G11391	-	Flat Washer, 5/8" SAE
	G10230	8	Lock Washer, 5/8"
	G10104	8	Hex Nut, 5/8"-11
8	GD0453-09	1	Extension Tube, 75", 12 Row 36"/38" and 16 Row 30" (L.H. Even-Row Marker) (If Applicable)
	GD0453-03	-	Extension Tube, 50", 12 Row 36"/38" and 16 Row 30"
9	---	-	See "Row Marker (Cushion) Cylinder, All Sizes" on page 28
10	GD0652	1	Pin, 1 1/4" x 9 1/2"
	G10460	2	Cotter Pin, 1/4" x 2"
11	GA11769	-	Pin W/Grease Fitting, 1 1/4" x 11 1/2"
	G10640	-	Grease Fitting, 1/4"-28
	G10463	-	Cotter Pin, 1/4" x 1 1/2"
12	GD10793	-	Shim, 2 1/2" x 12 1/2", 16 Gauge (As Required) (Shown)
	GD11791	-	Shim, 2 1/2" x 8 1/4", 16 Gauge (As Required)
13	GA4877	1	Mount
14	GA13721	1	Stand, 30"
15	GD2721	3	U-Bolt, 2" x 2" x 1/2"-13
	G10228	6	Lock Washer, 1/2"
	G10102	6	Hex Nut, 1/2"-13
16	GD9981	1	Bar
17	GD4743	2	U-Bolt, 3" x 3" x 1/2"-13
	G11389	4	Flat Washer, 1/2" Plated SAE
	G10228	4	Lock Washer, 1/2"
	G10102	4	Hex Nut, 1/2"-13
18	G10017	2	Hex Head Cap Screw, 1/2"-13 x 1 1/2"
	G11389	2	Flat Washer, 1/2" Plated SAE
	G10111	2	Lock Nut, 1/2"-13
19	GA9088	-	Molded Stop, 12 1/4" Long
20	G10979	4	Special Washer, 1 1/4" (As Required)
21	GD13359	2	Plate, 7" x 7"
22	G11396	2	Flat Washer, 1 1/4" SAE
	G10322	2	Machine Bushing, 1 1/4", 18 Gauge

(CYL39c)



ITEM	PART NO.	QTY.	DESCRIPTION
1	GD11951	1	Clevis
2	G10907	1	Set Screw, 1/4"-20 x 1/4"
3	GD11193	1	Cap
4	GD10936	1	Rod
5	GD10211	1	Gland
6	GD11253	1	Piston
7	GD27235	1	Nylon Lock Nut, 1"-14, Grade 8
8	GA8149	1	Barrel
9	G10939	1	Hex Head Cap Screw, 3/8"-16 x 2 1/4"
	G10108	1	Lock Nut, 3/8"-16
10	G6408-H04-O	1	Hex Socket Head Plug W/O-Ring, 7/16"-20 O-Ring
	GR1465	1	O-Ring
A	GA8908	-	Cylinder Complete, 3" x 48" (<i>Part Number Stamped On Barrel</i>)
B	GR1428	-	Seal Kit, Includes: (2) O-Rings, (2) BU Rings, (1) Wiper, (1) U-Cup, (1) Piston Seal, (2) Cast Iron Rings, (1) Expander

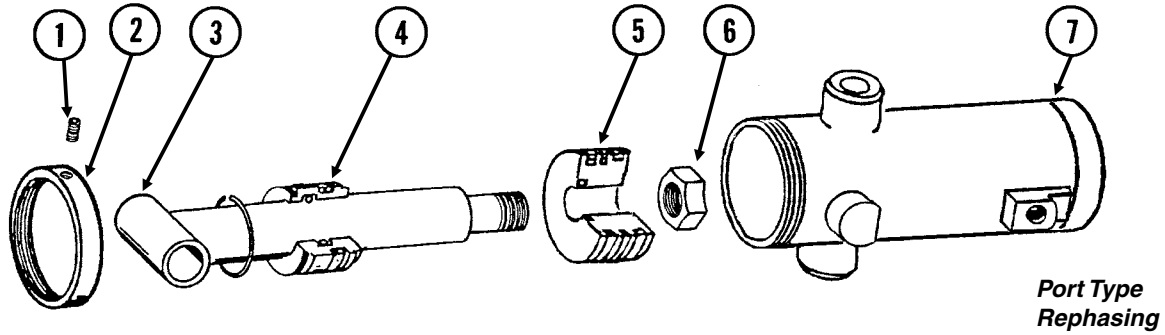
CYL031/CYL011(CYL45d)



**Port Type
Rephasing**

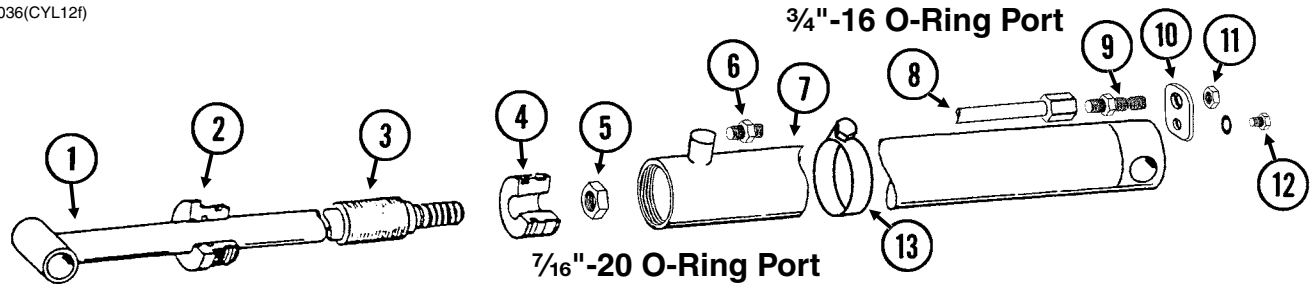
ITEM	PART NO.	QTY	DESCRIPTION
1	GA8320	1	Rod Assembly W/Grease Fitting
	G10640	-	Grease Fitting, 1/4"-28
2	GD11995	1	Gland
3	GD11994	1	Piston
4	GD27235	1	Nylon Lock Nut, 1"-14, Grade 8
5	A8797	1	Barrel (Non-Stock Item)
A	GA8909	-	Cylinder Complete, 4 1/4" x 6" <i>(Part Number Stamped On Barrel)</i>
B	GR1523	-	Seal Kit, Includes: (1) Wiper, (2) O-Rings, (1) BU Ring, (1) U-Cup, (1) Seal, (2) Cast Iron Rings, (1) Expander

CYL031/CYL011(CYL41c)



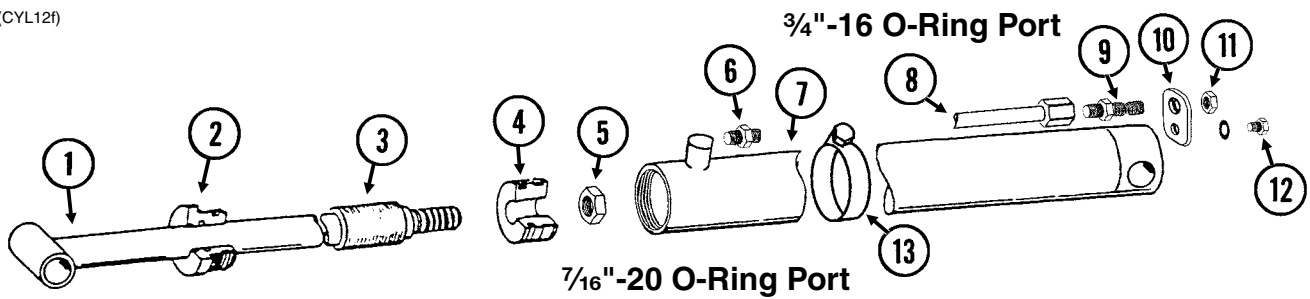
ITEM	PART NO.	QTY.	DESCRIPTION
1	G10907	1	Set Screw, 1/4"-20 x 1/4"
2	GD11193	1	Cap
3	GA8157 G10449	1 -	Rod Assembly W/Grease Fitting Grease Fitting, 3/16", Drive-In
4	GD11194	1	Gland
5	GD11253	1	Piston
6	GD27235	1	Nylon Lock Nut, 1"-14, Grade 8
7	A8873	1	Barrel (Non-Stock Item)
A	GA8874	-	Cylinder Complete, 3" x 6" (<i>Part Number Stamped On Barrel</i>)
B	GR1417	-	Seal Kit, Includes: (2) O-Rings, (2) BU Rings, (1) Expander, (1) Wiper, (1) U-Cup, (1) Piston Seal, (2) Cast Iron Rings

CYL036(CYL12f)



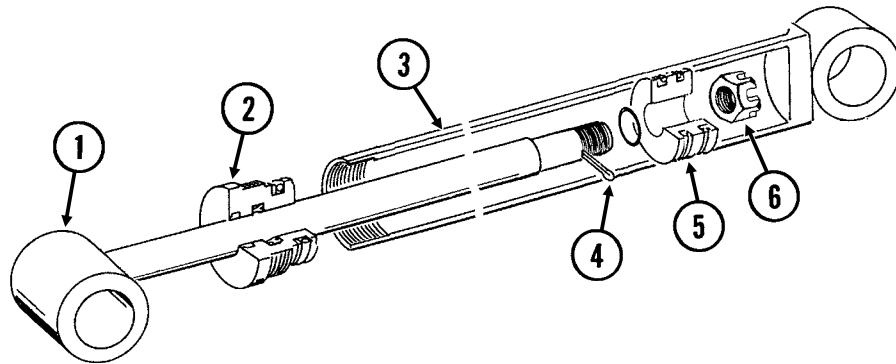
ITEM	PART NO.	QTY.	DESCRIPTION
1	GA8859	1	Rod Assembly
2	GD11984	1	Gland
3	GD7147	1	Spacer
4	GD11970	1	Piston
5	GD27237	1	Nylon Lock Nut, 1 1/4"-12, Grade 8
6	G6400-08-04 GR1465	1 -	Connector W/O-Ring, 3/4"-16 Male JIC To 7/16"-20 O-Ring O-Ring
7	GA8861	1	Barrel
8	GA8979	1	Steel Hydraulic Line, 92 ¹ / ₁₆ "
9	G2700-08	1	Bulkhead Tube Union, 3/4"-16 Male JIC
10	GD12597	1	Bracket
11	G306-08	1	Lock Nut, 3/4"-16
12	G10328 G10229	1 1	Hex Head Cap Screw, 3/8"-16 x 5/8" Lock Washer, 3/8"
13	G10990	1	Hose Clamp, No. 52
A	GA8862	-	Cylinder Complete, 3" x 84" (Part Number Stamped On Barrel)
B	GR1519	-	Seal Kit, Includes: (2) O-Rings, (1) BU Ring, (1) Wear Ring, (1) Wiper, (1) U-Cup, (1) T-Seal

CYL036(CYL12f)



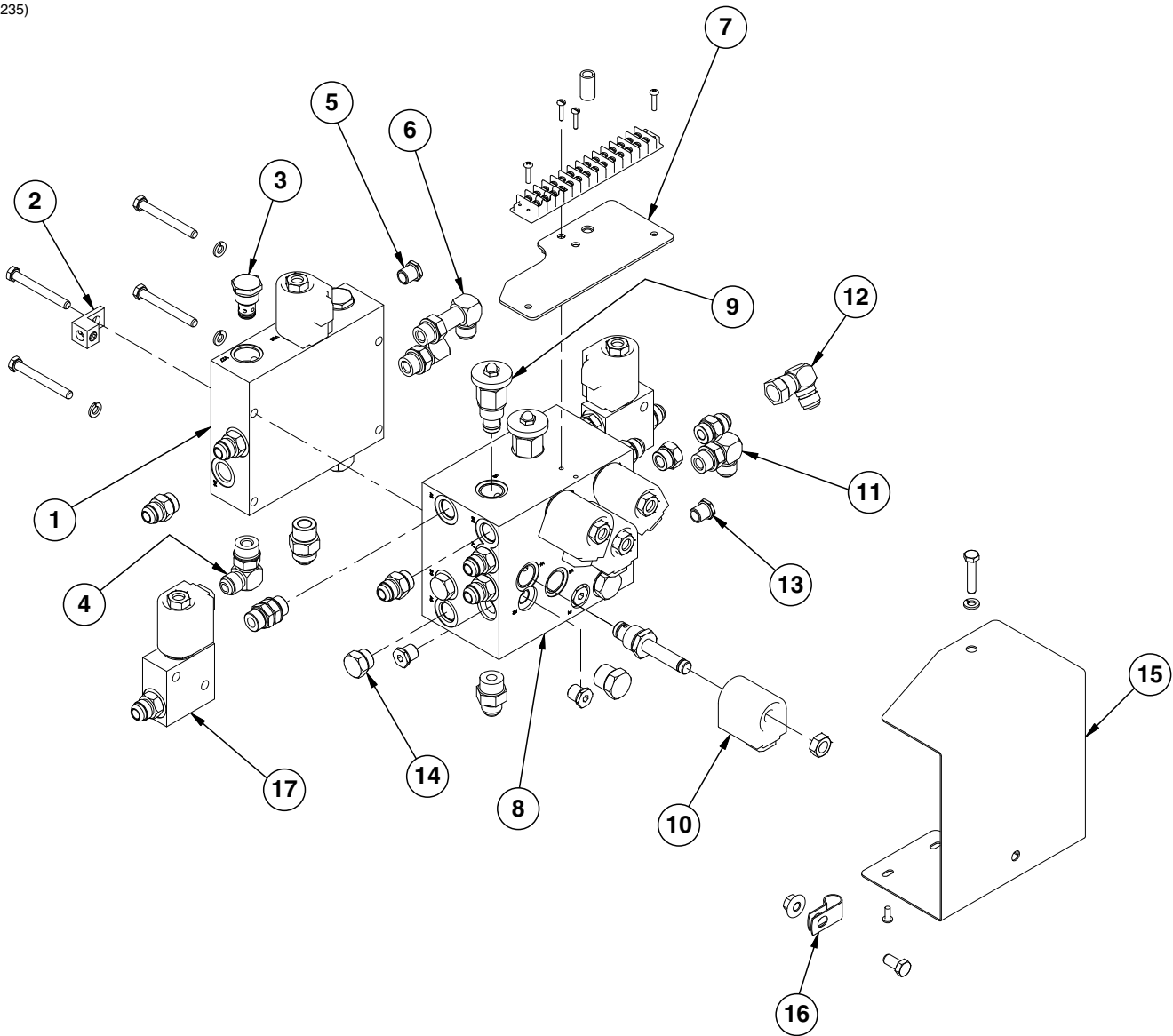
ITEM	PART NO.	QTY.	DESCRIPTION
1	GA8863	1	Rod Assembly
2	GD11984	1	Gland
3	GD7147	1	Spacer
4	GD11970	1	Piston
5	GD27237	1	Nylon Lock Nut, 1 1/4"-12, Grade 8
6	G6400-08-04 GR1465	1 -	Connector W/O-Ring, 3/4"-16 Male JIC To 7/16"-20 O-Ring O-Ring
7	GA8865	1	Barrel
8	GA8980	1	Steel Hydraulic Line, 116 1/16"
9	G2700-08	1	Bulkhead Tube Union, 3/4"-16 Male JIC
10	GD12597	1	Bracket
11	G306-08	1	Lock Nut, 3/4"-16
12	G10328 G10229	1 1	Hex Head Cap Screw, 3/8"-16 x 5/8" Lock Washer, 3/8"
13	G10990	1	Hose Clamp, No. 52
A	GA8866	-	Cylinder Complete, 3" x 108" (Part Number Stamped On Barrel)
B	GR1519	-	Seal Kit, Includes: (2) O-Rings, (1) BU Ring, (1) Wear Ring, (1) Wiper, (1) U-Cup, (1) T-Seal

(CYL3d)



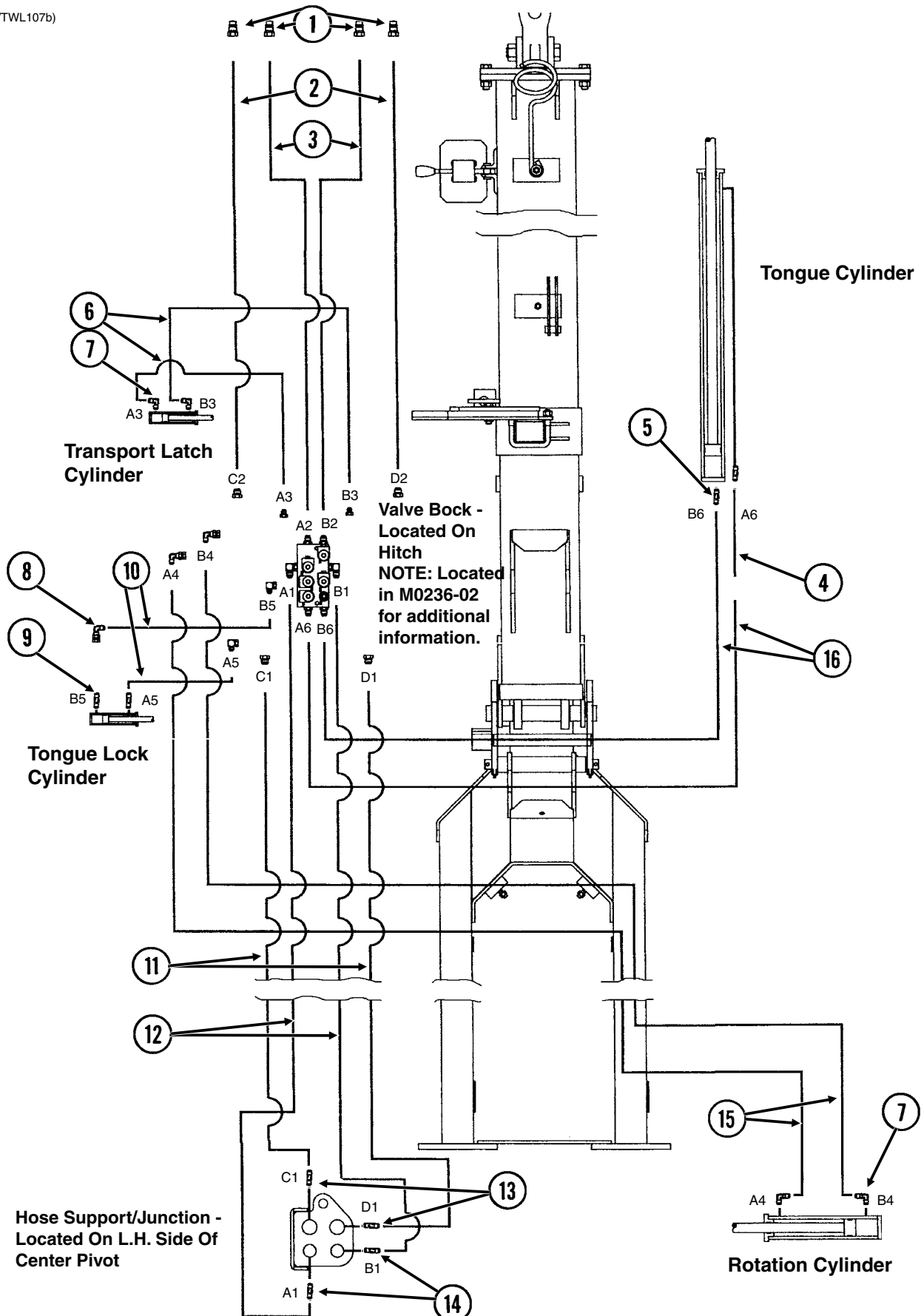
ITEM	PART NO.	QTY.	DESCRIPTION
1	GA8871	1	Rod Assembly
2	GD10207	1	Gland
3	A7524	1	Barrel (Non-Stock Item)
4	G10827	1	Cotter Pin, 1/8" x 1 3/4"
5	GD11983	1	Piston
6	G10962	1	Slotted Hex Nut, 7/8"-14
A	GA8895	-	Cylinder Complete, 2 1/2" x 20 1/16" (Part Number Stamped On Barrel)
B	GR1521	-	Seal Kit, Includes: (1) T-Seal, (2) O-Rings, (1) BU Ring, (1) Cast Iron Ring, (1) Wiper, (1) U-Cup

(IP1235)



ITEM	PART NO.	QTY.	DESCRIPTION
1	GD9977	1	Block
	G6801-08	1	Elbow W/O-Ring, 90°, 3/4"-16 Male JIC To O-Ring
	GR1037	-	O-Ring
	G6400-08	2	Connector W/O-Ring, 3/4"-16 Male JIC To O-Ring
	GR1037	-	O-Ring
	G6400-10	1	Connector W/O-Ring, 7/8"-14 Male JIC To O-Ring
	GR1466	-	O-Ring
2	GA3584	1	Ground Clamp
	G10232	3	Lock Washer, 5/16"
	G10583	4	Hex Head Cap Screw, 5/16"-18 x 2 3/4"
3	GA4293	2	Check Valve
4	G6801-08-10	2	Elbow W/O-Ring, 90°, 3/4"-16 Male JIC To 7/8"-14 O-Ring
	GR1466	-	O-Ring
5	G6408-H06-O	6	Hex Socket Head Plug W/O-Ring, 9/16"-18 O-Ring
	GR1045	-	O-Ring
6	G6801-L-08	1	Long Elbow W/O-Ring, 90°, 3/4"-16 Male JIC To O-Ring
	GR1037	-	O-Ring
7	GA13741	1	Terminal Strip Mount
	G11066	2	Phillips Pan Head Machine Screw, No. 10-24 x 3/4", Stainless Steel
	GD8066-02	1	Sleeve, 1" Long
	GA9097	1	Terminal Strip W/Screws, No. 6, 14 Terminal
	GR1635	-	Screw, No. 6-32 x 1/4"
	G11067	2	Phillips Pan Head Machine Screw, No. 8-32 x 3/4", Stainless Steel
8	GD9533	1	Block
	G6400-08-10	2	Connector W/O-Ring, 3/4"-16 Male JIC To 7/8"-14 O-Ring
	GR1466	-	O-Ring
	G6408-10	2	Plug W/O-Ring, 7/8"-14 O-Ring
	GR1466	-	O-Ring
	G6400-08	7	Plug W/O-Ring, 3/4"-16 O-Ring
	GR1037	-	O-Ring
9	GA3413	2	Flow Control Valve
10	---	5	See "Solenoid Valve" on page 30 (Located in M0236-02)
11	G6801-08	1	Elbow W/O-Ring, 90°, 3/4"-16 Male JIC To O-Ring
	GR1037	-	O-Ring
12	G6500-08	1	Swivel Elbow, 90°, 3/4"-16 Male JIC To Female
13	G6408-H06-O	5	Hex Socket Head Plug W/O-Ring, 9/16"-18 O-Ring
	GR1045	-	O-Ring
14	G6408-08	4	Plug W/O-Ring, 3/4"-16 O-Ring
	GR1037	-	O-Ring
15	GD13146	1	Valve Block Cover
	G10977	2	Phillips Pan Head Machine Screw, No. 10-24 x 1/2", Stainless Steel
	G10232	1	Lock Washer, 5/16"
	G10133	1	Hex Head Cap Screw, 5/16"-18 x 1 1/2"
16	GD13348	1	Insulated Clamp, 1 1/16"
	G10002	1	Hex Head Cap Screw, 3/8"-16 x 3/4"
	G11091	1	Serrated Flange Nut, 3/8"-16
17	GD14528	2	Valve Block
	G6400-08	2	Connector W/O-Ring, 3/4"-16 Male JIC To O-Ring
	GR1037	-	O-Ring
	G6403-NWO-08	2	Adjustable Union, 3/4"-16 O-Ring
A	GR0764	-	Seal Kit, Includes: (2) O-Rings, (1) BU Ring

(TWL107/TWL107b)

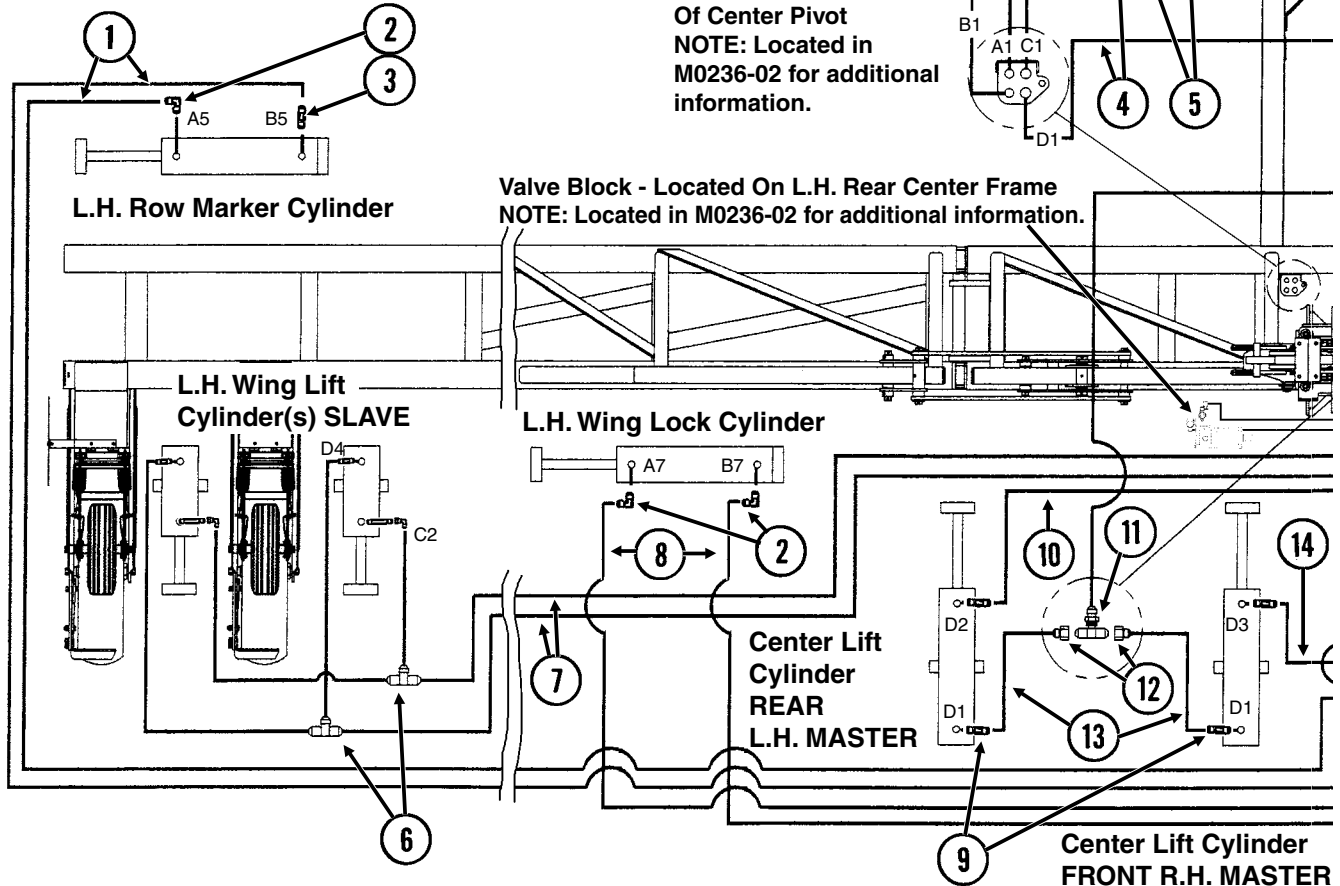


ITEM	PART NO.	QTY.	DESCRIPTION
1	GD4086	4	ISO Coupler
2	*A1444	2	Hose Assembly, 1/2" x 250", 12 Row 30" "T" Hitch
	*A1491	2	Hose Assembly, 1/2" x 246", 12 Row 36"/38" "Y" Hitch
	*A1447	2	Hose Assembly, 1/2" x 300", 16 Row 30" "T" Hitch
3	*A1032	2	Hose Assembly, 3/8" x 240", 12 Row 30" "T" Hitch
	*A3183	2	Hose Assembly, 3/8" x 246", 12 Row 36"/38" "Y" Hitch
	*A3184	2	Hose Assembly, 3/8" x 300", 16 Row 30" "T" Hitch
4	*A3216	1	Hose Assembly, 3/8" x 96", 12 Row 36"/38" "Y" Hitch, 12 Row 30" "T" Hitch
5	G6400-08	1	Connector W/O-Ring, 3/4"-16 Male JIC To O-Ring
	GR1037	-	O-Ring
6	*A1183	2	Hose Assembly, 1/4" x 157", 12 Row 30" "T" Hitch and 12 Row 36"/38" "Y" Hitch
	*A1119	2	Hose Assembly, 1/4" x 216", 16 Row 30" "T" Hitch
7	G6801-06-08	4	Elbow W/O-Ring, 90°, 9/16"-18 Male JIC To 3/4"-16 O-Ring
	GR1037	-	O-Ring
8	G6502-06	1	Swivel Elbow, 45°, 9/16"-18 Male JIC To Female
9	G6400-06-08	2	Connector W/O-Ring, 9/16"-18 Male JIC To 3/4"-16 O-Ring
	GR1037	-	O-Ring
10	*A1139	2	Hose Assembly, 1/4" x 40", 12 Row 30" "T" Hitch, 12 Row 36"/38" "Y" Hitch And 16 Row 30" "T" Hitch
11	*A1464	2	Hose Assembly, 1/2" x 72", 12 Row 30" "T" Hitch
	*A1467	2	Hose Assembly, 1/2" x 120", 12 Row 36"/38" "Y" Hitch
	*A1462	2	Hose Assembly, 1/2" x 78", 16 Row 30" "T" Hitch
12	*A3129	2	Hose Assembly, 3/8" x 79", 12 Row 30" "T" Hitch
	*A1011	2	Hose Assembly, 3/8" x 125", 12 Row 36"/38" "Y" Hitch
	*A3113	2	Hose Assembly, 3/8" x 84", 16 Row 30" "T" Hitch
13	G2700-10	2	Bulkhead Tube Union, 7/8"-14 Male JIC
14	G2700-08	2	Bulkhead Tube Union, 3/4"-16 Male JIC
15	*A1114	2	Hose Assembly, 1/4" x 85", 12 Row 30" "T" Hitch
	*A1106	2	Hose Assembly, 1/4" x 130", 12 Row 36"/38" "Y" Hitch
	*A1102	2	Hose Assembly, 1/4" x 95", 16 Row 30" "T" Hitch
16	*A3129	2	Hose Assembly, 3/8" x 79", 12 Row 30" "T" Hitch
	*A3156	2	Hose Assembly, 3/8" x 68", 12 Row 36"/38" "Y" Hitch
	*A3159	2	Hose Assembly, 3/8" x 97", 16 Row 30" "T" Hitch

* Hydraulic hose is not stocked by Kinze Repair Parts, but can be made available on a special order basis. Call for quote.

(TWL105b)

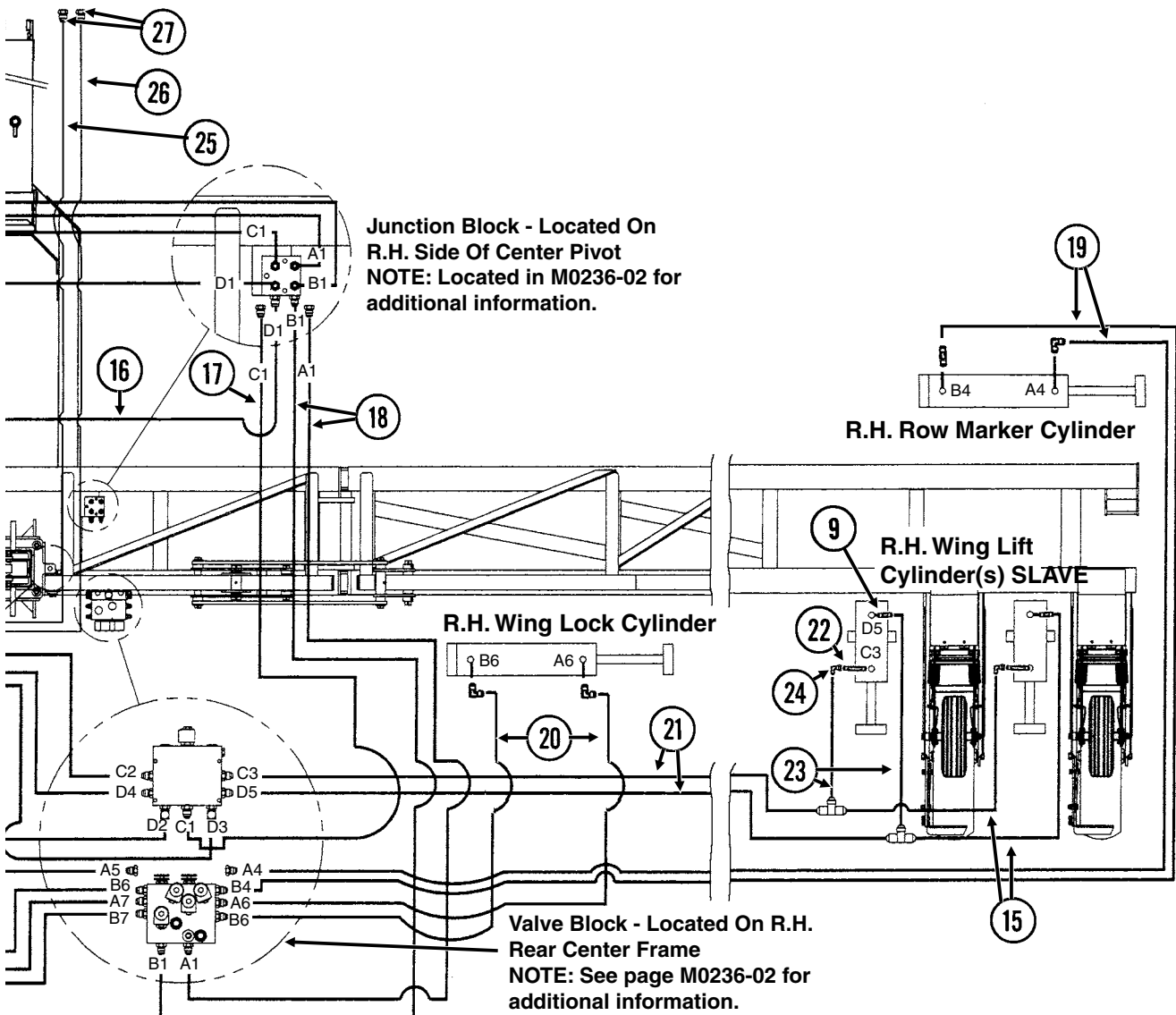
16 Row Shown (Two Wing Lift Cylinders Per Wing)
 12 Row (One Wing Lift Cylinder Per Wing)



Hose Support/Junction - Located On L.H. Side Of Center Pivot
 NOTE: Located in M0236-02 for additional information.

Valve Block - Located On L.H. Rear Center Frame
 NOTE: Located in M0236-02 for additional information.

ITEM	PART NO.	QTY.	DESCRIPTION
1	*A1034 *A3106 *A3181	2 2 2	Hose Assembly, 3/8" x 272", 12 Row 30" Hose Assembly, 3/8" x 318", 12 Row 36"/38" Hose Assembly, 3/8" x 332", 16 Row 30"
2	G6801-08 GR1037	6 -	Elbow W/O-Ring, 90°, 3/4"-16 Male JIC To O-Ring O-Ring
3	G6400-08-04 GR1465	2 -	Connector W/O-Ring, 3/4"-16 Male JIC To 7/16"-20 O-Ring O-Ring
4	*A8267 *A1460	2 2	Hose Assembly, 1/2" x 58", 12 Row 30" And 16 Row 30" Hose Assembly, 1/2" x 62", 8 Row 36"/38" And 12 Row 36"/38"
5	*A3127 *A3152	2 2	Hose Assembly, 3/8" x 58", 12 Row 30" And 16 Row 30" Hose Assembly, 3/8" x 62", 12 Row 36"/38"
6	G2603-08	4	Tee, 3/4"-16 Male JIC, 16 Row 30"
7	*A1033 *A3185 *A1034	2 2 2	Hose Assembly, 3/8" x 250", 12 Row 30" Hose Assembly, 3/8" x 284", 12 Row 36"/38" Hose Assembly, 3/8" x 272", 16 Row 30"
8	*A1055	2	Hose Assembly, 3/8" x 66"
9	G6400-08 GR1037	8 -	Connector W/O-Ring, 3/4"-16 Male JIC To O-Ring O-Ring
10	*A3131	1	Hose Assembly, 3/8" x 42"
11	G2703-08-08-10	1	Bulkhead Tee, 7/8"-14 Male JIC To 3/4"-16 JIC
12	G2406-10-08	2	Reducer, 7/8"-14 Female JIC To 3/4"-16 Male JIC



ITEM	PART NO.	QTY.	DESCRIPTION
13	*A1076	2	Hose Assembly, 3/8" x 30"
14	*A3128	1	Hose Assembly, 3/8" x 52"
15	*A1018	4	Hose Assembly, 3/8" x 40", 16 Row 30"
16	*A1404	1	Hose Assembly, 1/2" x 41"
17	*A1424	1	Hose Assembly, 1/2" x 30"
18	*A1076	2	Hose Assembly, 3/8" x 30"
19	*A3163	2	Hose Assembly, 3/8" x 225", 12 Row 30"
	*A1036	2	Hose Assembly, 3/8" x 280", 12 Row 36"/38"
	*A1097	2	Hose Assembly, 3/8" x 288", 16 Row 30"
20	*A1076	2	Hose Assembly, 3/8" x 30"
21	*A1028	2	Hose Assembly, 3/8" x 186", 12 Row 30"
	*A1031	2	Hose Assembly, 3/8" x 234", 12 Row 36"/38"
	*A1057	2	Hose Assembly, 3/8" x 216", 16 Row 30"
22	G6400-L-08	-	Long Connector W/O-Ring, 3/4"-16 Male JIC To O-Ring
	GR1037	-	O-Ring
23	*A3122	4	Hose Assembly, 3/8" x 10 1/2", 16 Row 30"
24	G6500-08	-	Swivel Elbow, 90°, 3/4"-16 Male JIC To Female
25	GA12901	1	Hose Assembly, 3/4" x 510"
26	GA8286	1	Hose Assembly, 1/2" x 510"
27	GD4086	2	ISO Coupler

* Hydraulic hose is not stocked by Kinze Repair Parts, but can be made available on a special order basis. Call for quote.

Part No.	Page	Part No.	Page	Part No.	Page	Part No.	Page
*A1011.....	P32	*A3377.....	P1	G10062.....	P4	G10111.....	P14
*A1018.....	P34	*A8261.....	P1	G10064.....	P13	G10111.....	P20
*A1028.....	P34	*A8267.....	P33	G10064.....	P14	G10111.....	P22
*A1031.....	P34	*A8269.....	P1	G10068.....	P22	G10112.....	P4
*A1032.....	P32	*A8284.....	P1	G10071.....	P4	G10112.....	P12
*A1033.....	P33	A6892.....	P14	G10071.....	P6	G10131.....	P6
*A1034.....	P33	A6893.....	P14	G10071.....	P8	G10131.....	P8
*A1034.....	P33	A6904.....	P14	G10071.....	P18	G10133.....	P30
*A1036.....	P34	A6905.....	P14	G10071.....	P18	G10157.....	P3
*A1055.....	P33	A7027.....	P14	G10085.....	P12	G10159.....	P14
*A1057.....	P34	A7028.....	P14	G10101.....	P6	G10159.....	P14
*A1076.....	P34	A7044.....	P4	G10101.....	P8	G10159.....	P18
*A1076.....	P34	A7061.....	P4	G10101.....	P13	G10159.....	P20
*A1076.....	P34	A7073.....	P4	G10101.....	P14	G10159.....	P22
*A1097.....	P34	A7393.....	P12	G10102.....	P4	G10169.....	P3
*A1102.....	P32	A7428.....	P6	G10102.....	P12	G10172.....	P10
*A1106.....	P32	A7432.....	P8	G10102.....	P12	G10227.....	P14
*A1114.....	P32	A7524.....	P28	G10102.....	P16	G10228.....	P4
*A1119.....	P32	A8797.....	P24	G10102.....	P18	G10228.....	P4
*A1139.....	P32	A8873.....	P25	G10102.....	P18	G10228.....	P6
*A1183.....	P32	G10001.....	P12	G10102.....	P20	G10228.....	P8
*A12015.....	P1	G10001.....	P13	G10102.....	P20	G10228.....	P12
*A12017.....	P1	G10001.....	P14	G10102.....	P22	G10228.....	P12
*A12019.....	P1	G10002.....	P30	G10102.....	P22	G10228.....	P16
*A12036.....	P1	G10003.....	P6	G10103.....	P14	G10228.....	P18
*A1404.....	P34	G10004.....	P6	G10104.....	P3	G10228.....	P18
*A1424.....	P34	G10004.....	P10	G10104.....	P4	G10228.....	P20
*A1444.....	P32	G10006.....	P3	G10104.....	P12	G10228.....	P20
*A1447.....	P32	G10006.....	P22	G10104.....	P13	G10228.....	P22
*A1460.....	P33	G10008.....	P20	G10104.....	P14	G10228.....	P22
*A1462.....	P32	G10009.....	P3	G10104.....	P20	G10229.....	P6
*A1464.....	P32	G10011.....	P16	G10104.....	P22	G10229.....	P6
*A1467.....	P1	G10011.....	P20	G10105.....	P3	G10229.....	P13
*A1467.....	P32	G10012.....	P14	G10105.....	P12	G10229.....	P14
*A1491.....	P32	G10012.....	P22	G10105.....	P18	G10229.....	P26
*A3106.....	P33	G10014.....	P4	G10107.....	P3	G10229.....	P27
*A3113.....	P32	G10014.....	P6	G10107.....	P10	G10230.....	P3
*A3122.....	P34	G10014.....	P8	G10107.....	P12	G10230.....	P4
*A3127.....	P33	G10016.....	P4	G10107.....	P16	G10230.....	P13
*A3128.....	P34	G10016.....	P4	G10107.....	P16	G10230.....	P14
*A3129.....	P32	G10017.....	P4	G10108.....	P4	G10230.....	P20
*A3129.....	P32	G10017.....	P8	G10108.....	P4	G10230.....	P22
*A3131.....	P33	G10017.....	P16	G10108.....	P6	G10231.....	P3
*A3152.....	P33	G10017.....	P20	G10108.....	P6	G10231.....	P18
*A3156.....	P32	G10017.....	P22	G10108.....	P10	G10232.....	P30
*A3159.....	P32	G10026.....	P4	G10108.....	P13	G10232.....	P30
*A3163.....	P34	G10026.....	P12	G10108.....	P18	G10234.....	P12
*A3181.....	P33	G10027.....	P16	G10108.....	P23	G10237.....	P18
*A3183.....	P32	G10028.....	P18	G10110.....	P13	G10305.....	P14
*A3184.....	P32	G10033.....	P14	G10111.....	P4	G10322.....	P20
*A3185.....	P33	G10037.....	P12	G10111.....	P4	G10322.....	P22
*A3216.....	P32	G10046.....	P20	G10111.....	P6	G10322.....	P22
*A3352.....	P1	G10049.....	P18	G10111.....	P6	G10328.....	P26
*A3354.....	P1	G10053.....	P10	G10111.....	P10	G10328.....	P27
*A3361.....	P1	G10053.....	P12	G10111.....	P10	G10336.....	P12

Part No.	Page	Part No.	Page	Part No.	Page	Part No.	Page
G10404	P12	G10874	P14	G306-06	P1	GA4842	P4
G10436	P18	G10894	P6	G306-08	P18	GA4845	P4
G10437	P18	G10894	P8	G306-08	P26	GA4877	P22
G10441	P16	G10907	P23	G306-08	P27	GA4995	P3
G10449	P25	G10907	P25	G306-10	P1	GA5121	P16
G10457	P4	G10939	P23	G306-10	P18	GA5130	P20
G10460	P14	G10962	P28	G306-12	P1	GA5842	P4
G10460	P14	G10977	P30	G6400-06-08	P6	GA6497	P12
G10460	P14	G10979	P22	G6400-06-08	P8	GA6608	P18
G10460	P14	G10979	P22	G6400-06-08	P32	GA6792	P13
G10460	P18	G10990	P26	G6400-08	P30	GA6928	P12
G10460	P20	G10990	P27	G6400-08	P30	GA6929	P12
G10460	P22	G11053	P16	G6400-08	P30	GA6943	P12
G10460	P22	G11066	P30	G6400-08	P32	GA6964	P16
G10462	P3	G11067	P30	G6400-08	P33	GA7016	P4
G10462	P6	G11091	P6	G6400-08-04	P26	GA7018	P14
G10462	P8	G11091	P8	G6400-08-04	P27	GA7019	P14
G10463	P20	G11091	P10	G6400-08-04	P33	GA7022	P3
G10463	P20	G11091	P14	G6400-08-10	P30	GA7022	P18
G10463	P22	G11091	P30	G6400-10	P30	GA7029	P4
G10463	P22	G11169	P6	G6400-L-08	P34	GA7042	P20
G10468	P4	G11170	P10	G6403-NWO-08	P30	GA7049	P10
G10468	P6	G11387	P6	G6408-08	P30	GA7050	P10
G10468	P8	G11387	P10	G6408-10	P30	GA7067	P16
G10536	P20	G11387	P10	G6408-H04-O	P23	GA7074	P10
G10536	P22	G11387	P13	G6408-H06-O	P30	GA7075	P10
G10543	P12	G11389	P4	G6408-H06-O	P30	GA7083	P4
G10581	P10	G11389	P4	G6500-08	P30	GA7084	P4
G10583	P30	G11389	P4	G6500-08	P34	GA7085	P4
G10585	P6	G11389	P6	G6502-06	P32	GA7096	P16
G10585	P8	G11389	P8	G6801-06-08	P32	GA7098	P18
G10606	P14	G11389	P12	G6801-08	P30	GA7116	P22
G10636	P18	G11389	P16	G6801-08	P30	GA7118	P22
G10636	P18	G11389	P20	G6801-08	P33	GA7120	P18
G10640	P12	G11389	P20	G6801-08-10	P30	GA7390	P12
G10640	P20	G11389	P22	G6801-L-08	P30	GA7423	P6
G10640	P20	G11389	P22	G7698X	P14	GA7423	P8
G10640	P22	G11391	P4	GA11200	P18	GA7433	P4
G10640	P22	G11391	P12	GA11528	P4	GA7540	P16
G10640	P24	G11391	P20	GA11590	P20	GA7579	P12
G10641	P6	G11391	P22	GA11766	P20	GA8062	P18
G10641	P8	G11392	P12	GA11767	P20	GA8063	P18
G10641	P20	G11394	P18	GA11768	P22	GA8149	P23
G10647	P18	G11396	P20	GA11769	P22	GA8157	P25
G10689	P10	G11396	P22	GA12901	P34	GA8170	P20
G10689	P16	G2406-10-08	P33	GA13721	P22	GA8170	P22
G10765	P4	G2603-08	P33	GA13741	P30	GA8286	P34
G10779	P16	G2700-06-06	P1	GA13759	P22	GA8320	P24
G10802	P3	G2700-08	P26	GA13768	P4	GA8859	P26
G10802	P18	G2700-08	P27	GA13986	P3	GA8861	P26
G10808	P18	G2700-08	P32	GA3413	P30	GA8862	P26
G10810	P18	G2700-10	P1	GA3584	P30	GA8863	P27
G10811	P18	G2700-10	P32	GA4293	P30	GA8865	P27
G10827	P28	G2700-12	P1	GA4353	P20	GA8866	P27
G10828	P12	G2703-08-08-10	P33	GA4418	P4	GA8871	P28

Part No.	Page	Part No.	Page	Part No.	Page	Part No.	Page
GA8874	P25	GD10936	P23	GD3501	P4	GD9681	P13
GA8895	P28	GD1113	P13	GD3537-11	P6	GD9870	P12
GA8908	P23	GD11193	P23	GD3537-11	P8	GD9898	P12
GA8909	P24	GD11193	P25	GD3537-12	P8	GD9952	P10
GA8979	P26	GD11194	P25	GD3537-17	P6	GD9953	P4
GA8980	P27	GD11253	P23	GD3537-17	P8	GD9955	P14
GA9088	P20	GD11253	P25	GD3537-18	P8	GD9956	P14
GA9088	P22	GD11791	P22	GD4086	P1	GD9959	P4
GA9097	P30	GD11951	P23	GD4086	P32	GD9959	P6
GA9836	P3	GD11970	P26	GD4086	P34	GD9959	P8
GA9837	P3	GD11970	P27	GD4108	P14	GD9960	P4
GA9840	P14	GD11983	P28	GD4743	P20	GD9963	P14
GA9882	P18	GD11984	P26	GD4743	P22	GD9964	P14
GA9883	P18	GD11984	P27	GD5154	P4	GD9968	P12
GB0218	P3	GD11994	P24	GD5154	P6	GD9977	P30
GB0218	P10	GD11995	P24	GD5154	P8	GD9981	P20
GB0237	P3	GD12543	P18	GD5173	P3	GD9981	P22
GB0246	P6	GD12597	P26	GD5173	P6	GR0193	P16
GB0246	P8	GD12597	P27	GD5173	P8	GR0375	P16
GB0292	P4	GD12703	P14	GD5804	P4	GR0515	P3
GB0309	P14	GD12724	P14	GD5804	P6	GR0516	P3
GB0409	P12	GD13146	P30	GD5804	P8	GR0764	P30
GD0453-03	P22	GD13348	P30	GD5857	P4	GR1037	P30
GD0453-04	P20	GD13359	P22	GD5875	P4	GR1037	P30
GD0453-07	P20	GD13360	P20	GD5875	P6	GR1037	P30
GD0453-09	P22	GD13543	P6	GD5875	P13	GR1037	P30
GD0652	P22	GD13543	P8	GD6556	P4	GR1037	P30
GD0752-41	P20	GD13544	P6	GD7137	P4	GR1037	P30
GD0826	P14	GD13544	P8	GD7147	P26	GR1037	P32
GD10006	P12	GD13545	P6	GD7147	P27	GR1037	P32
GD10011	P16	GD13545	P8	GD7251	P4	GR1037	P32
GD10012	P16	GD13546	P6	GD7518	P4	GR1037	P33
GD10013	P16	GD14528	P30	GD7519	P4	GR1037	P33
GD10014	P16	GD15950	P14	GD7805	P3	GR1037	P34
GD10049	P14	GD16642	P4	GD7805	P10	GR1037	P30
GD10063	P16	GD1701	P22	GD7805	P12	GR1045	P30
GD10064	P18	GD18116	P6	GD7805	P22	GR1045	P30
GD10092	P18	GD18645	P18	GD7883	P8	GR1417	P25
GD10207	P28	GD1908	P14	GD7904-02	P12	GR1428	P23
GD10211	P23	GD19655	P18	GD8066-02	P30	GR1465	P23
GD10446	P16	GD2161	P20	GD8188	P4	GR1465	P26
GD10447	P16	GD2169	P16	GD8188	P6	GR1465	P27
GD10492	P12	GD2169	P18	GD8188	P6	GR1465	P33
GD10530	P6	GD25374	P12	GD8188	P10	GR1466	P30
GD10530	P8	GD2557	P4	GD8188	P12	GR1466	P30
GD10531	P12	GD2558	P4	GD8189	P4	GR1466	P30
GD10532	P12	GD2558	P18	GD8189	P4	GR1466	P30
GD10538-01	P6	GD2721	P20	GD8189	P6	GR1519	P26
GD10538-01	P8	GD2721	P22	GD8189	P6	GR1519	P27
GD10650	P6	GD27235	P23	GD8189	P10	GR1521	P28
GD10664	P6	GD27235	P24	GD8189	P12	GR1523	P24
GD10706	P12	GD27235	P25	GD8260	P3	GR1635	P30
GD10707	P12	GD27237	P26	GD9130	P16		
GD10792	P20	GD27237	P27	GD9533	P30		
GD10793	P22	GD2971-09	P4	GD9636	P16		