

MODEL 400 AND 600S AUGER WAGON

**OPERATOR & PARTS
MANUAL**

M0115


7/86

This page left blank intentionally.

TO THE OWNER


We at KINZE Manufacturing wish to thank you for your patronage and appreciate your confidence in KINZE farm machinery. Your KINZE auger wagon has been carefully designed and sturdily built to provide years of dependable operation in return for your investment.


This manual has been prepared to aid you in the operation and maintenance of the auger wagon and to provide the necessary part numbers to keep your KINZE wagon in near original condition.

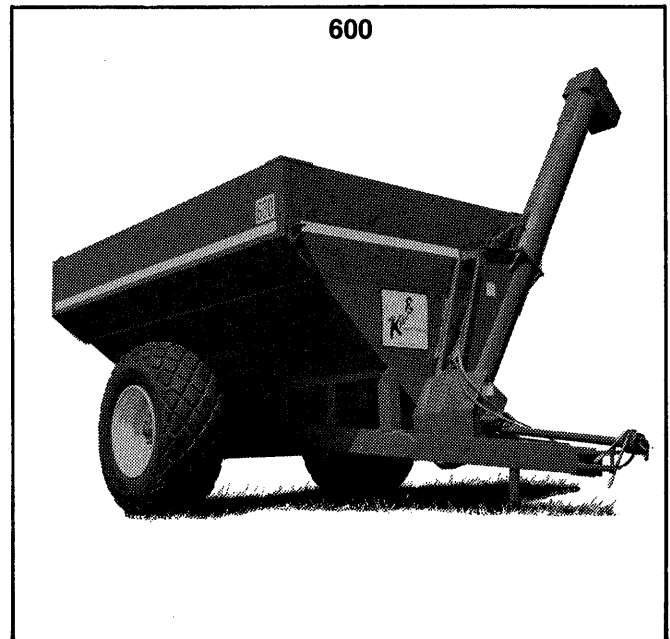
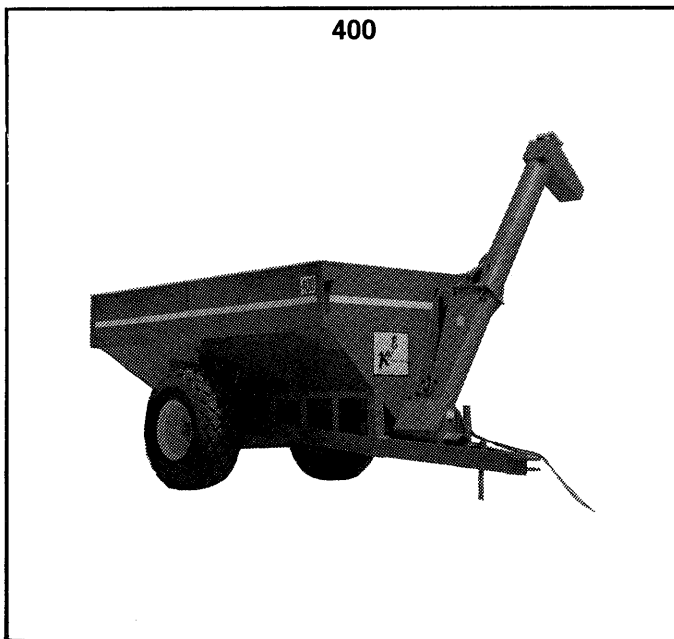
Throughout this manual the symbol  and the words "Caution" and "Warning" are used to call your attention to important safety information. The definition of each of these terms follows:

Note: Indicates a special point of information.

Caution: Indicates that a failure to observe can cause damage to the machine or equipment.

 **Warning:** Indicates that a failure to observe can cause damage to the machine or equipment and/or personal injury.

 **IMPORTANT:** YOUR KINZE AUGER WAGON WAS DESIGNED FOR FIELD AND OFF ROAD USE. IT IS NOT INTENDED OR RECOMMENDED THAT IT BE USED FOR ON ROAD TRANSPORT OF GRAIN. SHOULD THE WAGON BE USED FOR FIELD TO FARM HAULING, BE AWARE OF LOAD LIMITS ON RURAL ROADS AND BRIDGES.



This manual is applicable to:
Model 400, Serial Number 1338-1387, 1663-1682, 1733-1737 and 1863-1902

Model 600 S, Serial Number 1388-1462, 1613-1662, 1738-1762, 1813-1862 and 1903-1927

DATE PURCHASED _____

MODEL NUMBER _____

SERIAL NUMBER _____

TABLE OF CONTENTS

NEW MACHINE WARRANTY	1
INTRODUCTION	2
General Information	2
Serial Number	2
SPECIFICATIONS	3
SAFETY PRECAUTIONS	4
LUBRICATION	5
Drive Chains	5
Wheel Bearings	5
OPERATION	7
Initial Preparation of the Wagon	7
Tractor Preparation and Hookup	7
Unloading	8
Dump Door	8
MAINTENANCE	9
Auger Drive Chains	9
Wheel Nuts	9
Tire Pressure	9
Shear Bolt Protection	9
Wheel Bearing Replacement	10
Preparation of Storage	10
PARTS LIST	11

NEW MACHINE WARRANTY

KINZE warrants to the original purchaser for use that if any part of the product proves to be defective in material or workmanship within one year from date of original purchase, and is returned to KINZE within 30 days after such defect is discovered, KINZE will (at our option) either replace or repair said part. This warranty does not apply to damage resulting from misuse, neglect, accident or improper installation or maintenance. Said part will not be considered defective if it substantially fulfills the performance specifications. THE FOREGOING WARRANTY IS EXCLUSIVE AND IN LIEU OF ALL OTHER WARRANTIES OF MERCHANTABILITY, FITNESS FOR PURPOSE AND OF ANY OTHER TYPE, WHETHER EXPRESSED OR IMPLIED. KINZE neither assumes nor authorizes anyone to assume for it any other obligation or liability in connection with said part and will not be liable for consequential damages. Tires are not covered by KINZE warranty, but must be handled through the tire manufacturer's distributors and according to the manufacturer's warranty. Purchaser accepts these terms and warranty limitations unless the product is returned within fifteen days for full refund of purchase price.

KINZE reserves the right to make changes or to add improvements at any time without notice or obligation.

**ATTENTION: Effective 12/1/87
amendments were made to the
KINZE New Machine Warranty
Refer to insert W12187.**

INTRODUCTION

This manual has been written to cover the 400 and the 600 S Model KINZE Auger Wagons. Both models feature many of the same major components, which are largely interchangeable between the two units.

GENERAL INFORMATION

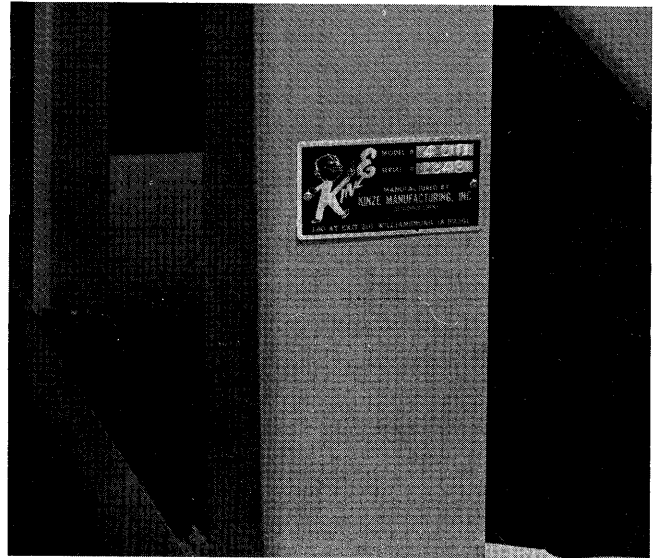
The information and photos used in this manual were current at the time of printing. However, due to KINZE's continual attempt to improve its product, possible in-line production changes may cause your machine to appear slightly different in detail. KINZE Manufacturing reserves the right to change specifications or design without notice and without incurring obligation to install the same on machines previously manufactured.

Right hand and left hand as used throughout this manual is determined by facing in the direction the machine will travel when in use.

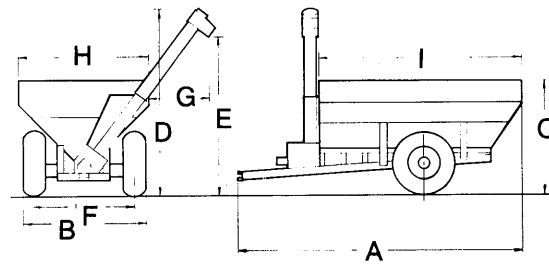
SERIAL NUMBER

The serial number provides important information about your auger wagon and may be required to obtain the correct replacement part.

The serial number plate is located on the front right hand corner of the wagon frame. It is suggested that the serial number also be recorded in the space provided in the front of this manual. Always provide the serial number and model number when ordering parts from your KINZE dealer or anytime correspondence is made with KINZE Manufacturing.



SPECIFICATIONS



MODEL	400	600S
OVERALL DIMENSIONS		
(A) Total Length	21'7"	22'0"
(B) Total Width (Auger Folded)	120"	130"
(C) Height (To Top of Grain Tank)	8'5"	9'2"
(D) Height (To Top Of Auger)	14'6"	15'2"
(E) Height (To Tip Of Spout)		
With Tip Extension	12'	12'
Without Tip Extension	12'6"	12'6"
(F) Width (Tire Center To Center)	96"	105"
(G) Side Of Wagon To Tip Of Spout		
With Tip Extension	4'8"	4'6"
Without Tip Extension**	4'2"	3'9"
GRAIN TANK SPECIFICATIONS		
(H) Total Width	8'2"	10'0"
(I) Total Length	15'4"	16'0"
Total Level Full Capacity (15% Moisture Corn) Construction	440 Bu. (Full 12 Gauge Construction)	600 Bu. (Full 12 Gauge Construction)
WEIGHTS		
Empty Hitch Weight	1,340 Lbs.	1,275 Lbs.
Loaded Hitch Weight	2,660 Lbs.	3,700 Lbs.
Total Wagon Weight-Empty	5,590 Lbs.	7,240 Lbs.
Total Wagon Weight-Loaded	30,270 Lbs.	40,840 Lbs.
UNLOADING TIME*	2 1/2 Minutes	3 1/2 Minutes
TRACTOR REQUIREMENTS	90-125 HP	125-150 HP
SUSPENSION		
Axle	8" Wide Flange H-Beam	
Spindle	3 1/4" Diameter	4 1/2" Diameter
Hub	10 Bolt	10 Bolt
Wheel	20" x 26"	21" x 32"
Tire Size	23.1 x 26, 8 Ply	27" x 32" With 120" Axle 24.5 x 32, 12 Ply 30.5 x 32, 12 Ply With 120" Axle
AUGERS		
Vertical	12" Full Pitch, Right Hand with 5/16" Helicoid Flighting	
Horizontal	9" Full Pitch, Left Hand	

* Time varies with RPM and moisture content of grain.

** Spout tip extension is standard equipment on all models.

SAFETY PRECAUTIONS

- Always disengage PTO or shut off tractor engine before:
 1. Leaving tractor seat.
 2. Lubricating the auger wagon.
 3. Cleaning out debris.
- Always keep hands, feet and clothing away from moving parts.
- Make certain tractor is in safe operating condition with adequate braking capabilities, especially when operating on uneven terrain.
- Never operate the auger wagon without PTO guards, tractor master shield and implement guards in place. Make certain PTO guards turn freely and are properly attached.
- Always make certain U-joint yokes are securely locked on tractor and implement shaft before operating wagon.
- Grease telescoping PTO shaft regularly to minimize thrust forces.
- Never exceed 1000 RPM or operate the PTO at full RPM with the auger empty.
- Always use adequate lights or safety warnings when transporting the wagon on public roads and after dark. Check with local law enforcement agencies for specific requirements.
- Always make certain there is adequate overhead clearance before folding or unfolding the unloading auger.
- Limit towing speed to 20 MPH when empty and 10 MPH when loaded.
- Never permit any persons other than the operator to ride on the tractor and never permit persons to ride on the wagon at any time.
- Your KINZE auger wagon is intended for off road use only. However, if grain is being transported from field to farm on rural roads, make sure all load limits on roads and bridges are observed.
- This machine has been designed and built with your safety in mind. Any alteration to the design or construction may create safety hazards. Do not make any alterations or changes to the equipment, but if any alterations or changes are made you must follow all appropriate safety standards and practices to protect you and others near this machine from injury.

LUBRICATION

The following page shows location of all lubrication points. Proper lubrication of all moving parts will help insure efficient operation of your KINZE auger wagon and prolong the life of friction producing parts. Those parts equipped with grease fittings should be lubricated at the frequency indicated with SAE multi-purpose type grease. Be sure to clean the fitting thoroughly before using grease gun. The frequency of lubrication recommended is based on normal operating conditions. Severe or unusual conditions may require more frequent attention.

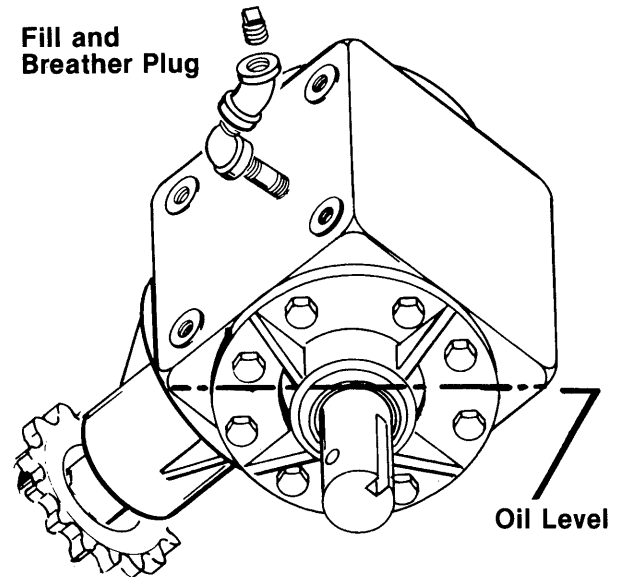
Drive Chains

The auger drive chains should be lubricated daily with a quality engine oil or equivalent SAE 30 weight oil. A good quality spray lubricant may also be used for periodic chain lubrication. Extreme operating conditions such as dirt, temperature or speed may require more frequent lubrication. If any of the chains become stiff, they should be removed, soaked and washed in solvent to loosen and remove dirt from the joints. Then soak the chain in oil so the lubricant can penetrate between the rollers and bushings.

Wheel Bearings

Wheel bearings should be repacked with clean heavy-duty axle grease approximately once a year or at the beginning of each season. Follow the procedure outlined for wheel bearing replacement with the exception that bearings and bearing cups are reused when the wheel bearings are being repacked.

Gearbox



Vertical Auger Drive Sprocket

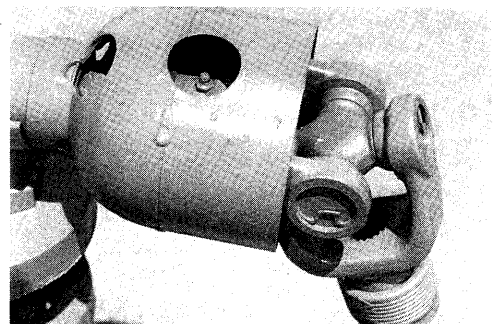
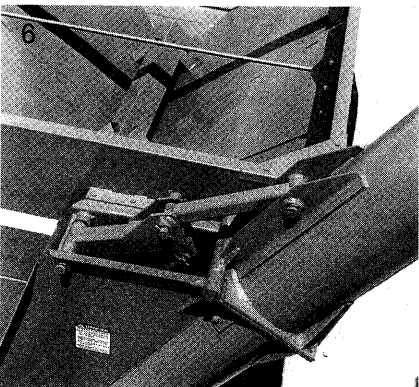
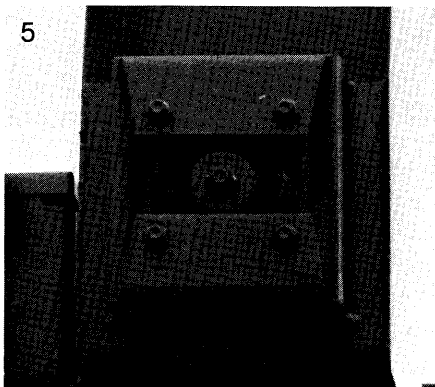
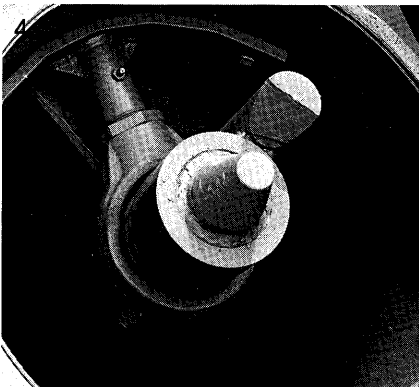
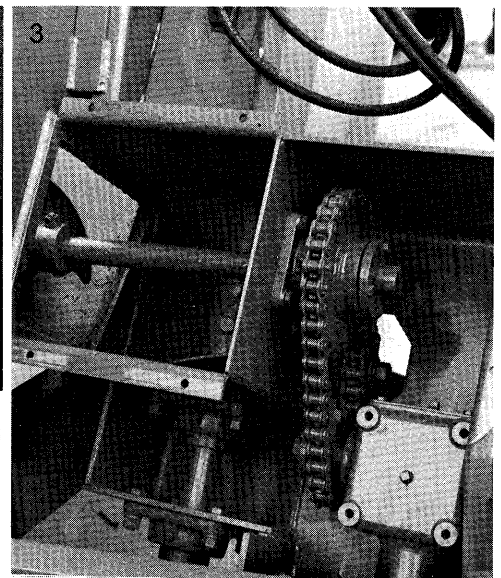
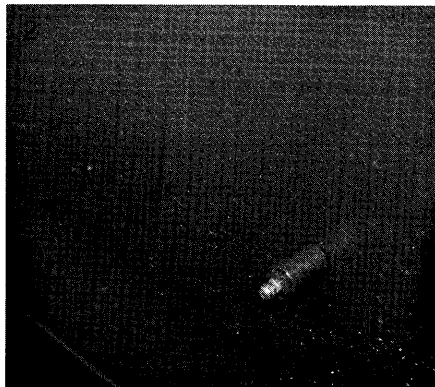
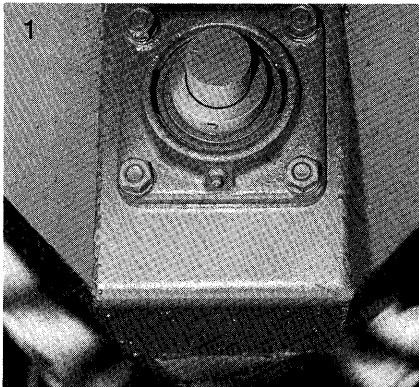
Oil level should never exceed more than half way up on the cross shaft. Fill as needed with SAE 90 oil.

LUBRICATION

LUBRICATION CHART

Ref. No.	Description	No. Of Zerks	Frequency
1.	Rear Horizontal Auger Bearing	1	Weekly
2.	Horizontal Auger Center Bearing	1	Weekly
3.	Lower Vertical Auger Bearing	2	Weekly
	Front Horizontal Auger Bearing	1	Weekly
	Drive Chain	2	Daily
4.	Vertical Auger Center Bearing	1	Weekly
5.	Upper Vertical Auger Bearing	1	Weekly
6.	Auger Fold Linkage and Hinge	4	Daily
7.	PTO Assembly	3	Daily

CAUTION: Extreme operating conditions such as dirt, temperature or speed may require more frequent lubrication.



OPERATION

The following information is general in nature and was written to aid the operator in preparing the tractor and auger wagon for use and providing general operating procedures.

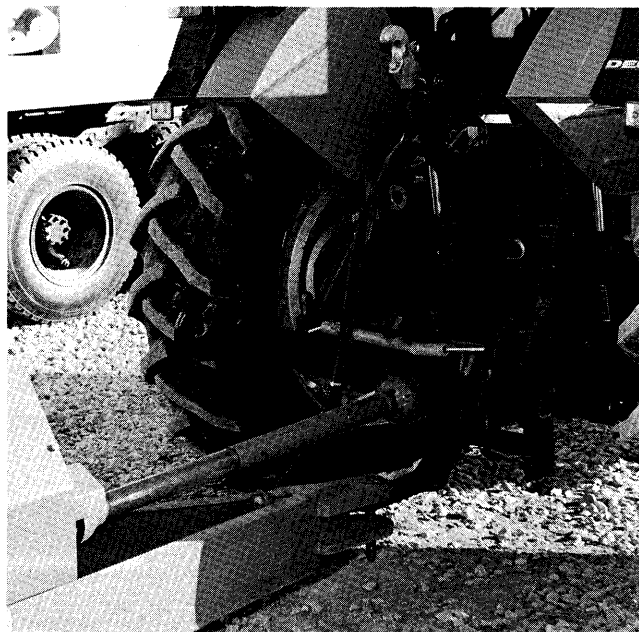
Initial Preparation of the Wagon

Lubricate the auger wagon per the lubrication information in this manual prior to initial operation and at prescribed intervals thereafter. Most importantly, make sure all tires have been properly inflated prior to each use. Check all drive chains for proper tension and lubrication.

Tractor Preparation and Hookup

1. Slide tractor drawbar in as far as it will go. Then adjust the drawbar to a stationary position so that the hitch pin hole is directly below the center line of the PTO shaft.
2. Connect auger wagon to tractor hitch with at least a 1" x 6" Grade 5 cap screw, lock washer and hex nut or suitable hitch pin with locking hair pin.
3. Attach wagon PTO connecting yoke to tractor PTO shaft. Be sure spring loaded yoke pin engages groove in tractor PTO shaft. Check that slip tube grease fitting is visible through hole of outer tube.

CAUTION: Ensure that hitch height is sufficient to prevent severe bends in PTO U-joint angles.



4. Attach quick disconnect fitting to ends of hydraulic hoses to match tractor hydraulic ports. Connect hydraulic hoses to tractor ports in a sequence which is both familiar and comfortable to the operator.

CAUTION: When connecting cylinder hoses, make sure hoses do not cross over or contact PTO shaft.

OPERATION

⚠ WARNING: Before applying pressure to the system, make sure all connections are tight and that hoses and fittings have not been damaged. Hydraulic fluid escaping under pressure can have sufficient force to penetrate skin, causing injury or infection.

IMPORTANT: Always wipe hose ends to remove any dirt before connecting couplers to tractor ports.

5. Raise jack stand to a height that will prevent damage even in uneven field conditions.

⚠ WARNING: Your KINZE auger wagon was designed for off road use. If it is used for transporting grain over rural roads, observe weight limits on all roads and bridges.

Unloading

The unloading speed will vary with the moisture content of the grain and the PTO speed.

1. With clutch disengaged and tractor idling, engage PTO.
2. Increase tractor RPM to the desired speed.
3. As grain flow slows, reduce tractor RPM to idle.

CAUTION: If the auger wagon is being unloaded on the move, disengage PTO before making any sharp turns.

4. When grain flow stops, disengage PTO.

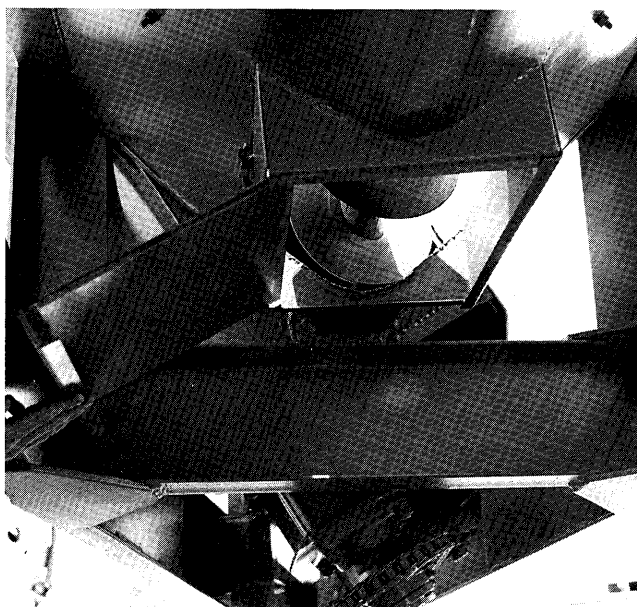
CAUTION: Do not operate tractor PTO at full speed with the auger empty.

Dump Door

The Model 400 and 600S are each equipped with a dump door at the bottom of the grain tank. The dump door not only provides cleaning access but also allows for pit dumping with the auger wagon.

Always make sure the PTO is disengaged prior to opening or closing the door. Grain flow may be regulated by the amount of door opening and the tractor PTO speed.

At the end of each season or extended use, the dump door should be removed and the horizontal auger chamber cleaned of all debris and accumulated grain to prevent rust and mold.



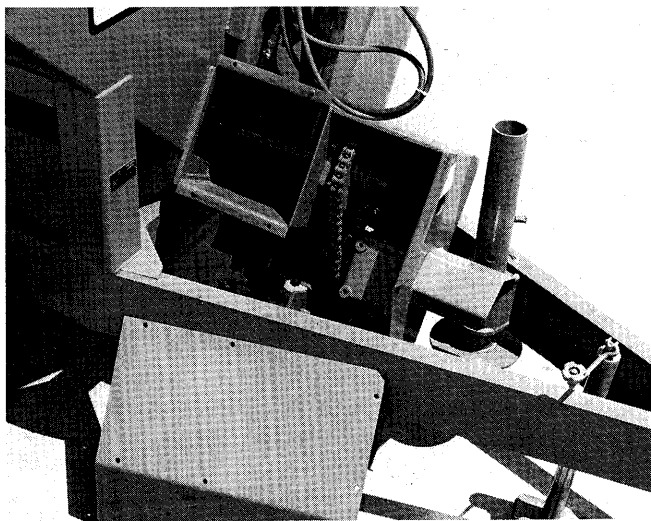
MAINTENANCE

Auger Drive Chains

To prevent excessive wear on the auger drive chains and sprockets, the chains must be maintained and properly tensioned.

Vertical Auger Drive

Adjust the slot mounted idler bracket to establish a deflection of 1/4" to 1/2" on the span opposite the idler.



Horizontal Auger Drive

Adjust the slot mounted idler bracket to establish a deflection of 1/8" to 1/4" on the longest span (opposite the idler).



Wheel Nuts

The wheels are attached to the hubs with the press fit bolts through the hub flanges and wheel nuts. Upon any removal and installation of the wheel, clean the threads with a wire brush and oil lightly to retard corrosion. Tighten wheel nuts to 425 foot pounds torque and check nuts periodically to insure tightness.

Tire Pressure

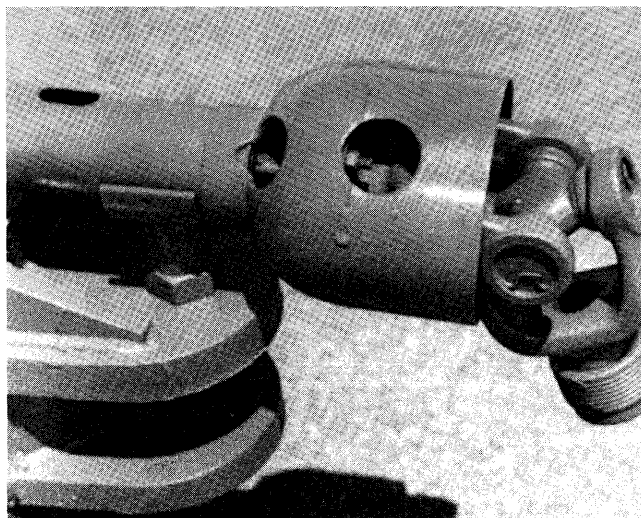
Tire pressure should be checked regularly and prior to each use of the wagon and maintained as follows:

23.1 x 26; 8 Ply	35 PSI
23.1 x 26; 10 Ply	35 PSI
24.5 x 32; 12 Ply	35 PSI

Shear Bolt Protection

To ensure drive line and gearbox protection, all KINZE Auger Wagons are equipped with a shear bolt yoke in the tractor half of the PTO shaft.

Should the auger become obstructed, the yoke is designed to shear the connecting bolt before further damage can occur. Access holes in the PTO shield permit replacement of the shear bolt without removal of the guard. Always use an identical 5/16" -18 x 1 1/2" standard grade bolt for replacement.



MAINTENANCE

Wheel Bearing Replacement

1. Jack tire clear of ground and remove wheel.
2. Remove hub cap attachment bolts and remove cap from wheel hub.
3. Remove cotter pin, axle nut and washer.
4. Slide hub from axle spindle, using a hub puller if necessary.
5. Remove bearing cups from hub and discard. Thoroughly clean wheel hub and dry.
6. Press in new bearing cups with thickest edges facing in.
7. Pack bearing with heavy-duty wheel bearing grease, thoroughly forcing grease between roller cone and bearing cage. Also fill the space between the bearing cups in the hub with grease.
8. Place inner bearing in hub and press in new grease seal with lip pointing towards bearing.
9. Clean axle spindle and install hub.
10. Install outer bearing, washer and slotted hex nut. Tighten slotted hex nut while rotating the hub until there is some drag. This assures that all bearing surfaces are in contact. Back off slotted nut to nearest locking slot and install cotter pin.
11. Fill hub cap half full of wheel bearing grease and install on hub with attachment bolts.
12. Install wheel and remove jack.

Preparation For Storage

Always store the auger wagon in a dry sheltered area if possible.

Remove all trash that may be wrapped on sprockets or shafts and remove dirt that can draw moisture.

Clean all drive chains and coat with a rust preventative spray, or better yet, remove chains and submerge in oil.

Lubricate auger wagon at all lubrication points.

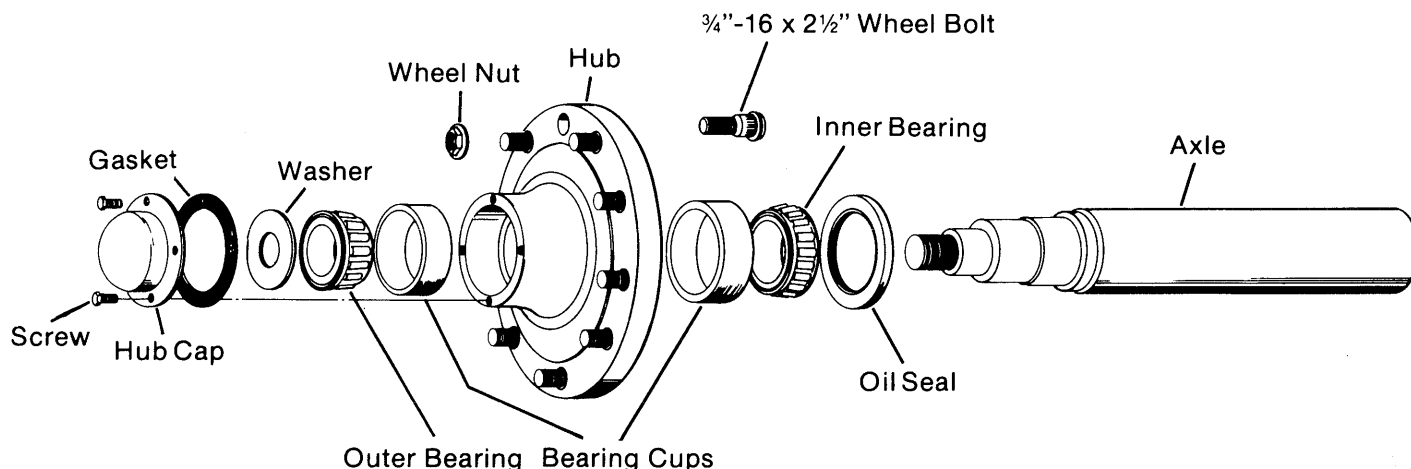
If possible, remove weight from all tires, particularly if the unit is being stored outdoors.

Repaint any areas where paint has been removed. This is particularly important in the inside of the grain tank. Rust in this area will shorten the life of the wagon as well as prevent grain from smoothly sliding to the bottom of the tank.

Inspect the wagon for parts that are in need of replacement and order during the "off" season.

Coat exposed surface of all cylinder piston rods with grease or rust preventative spray.

Remove dump door and clean out all accumulated grain and debris from auger chamber.

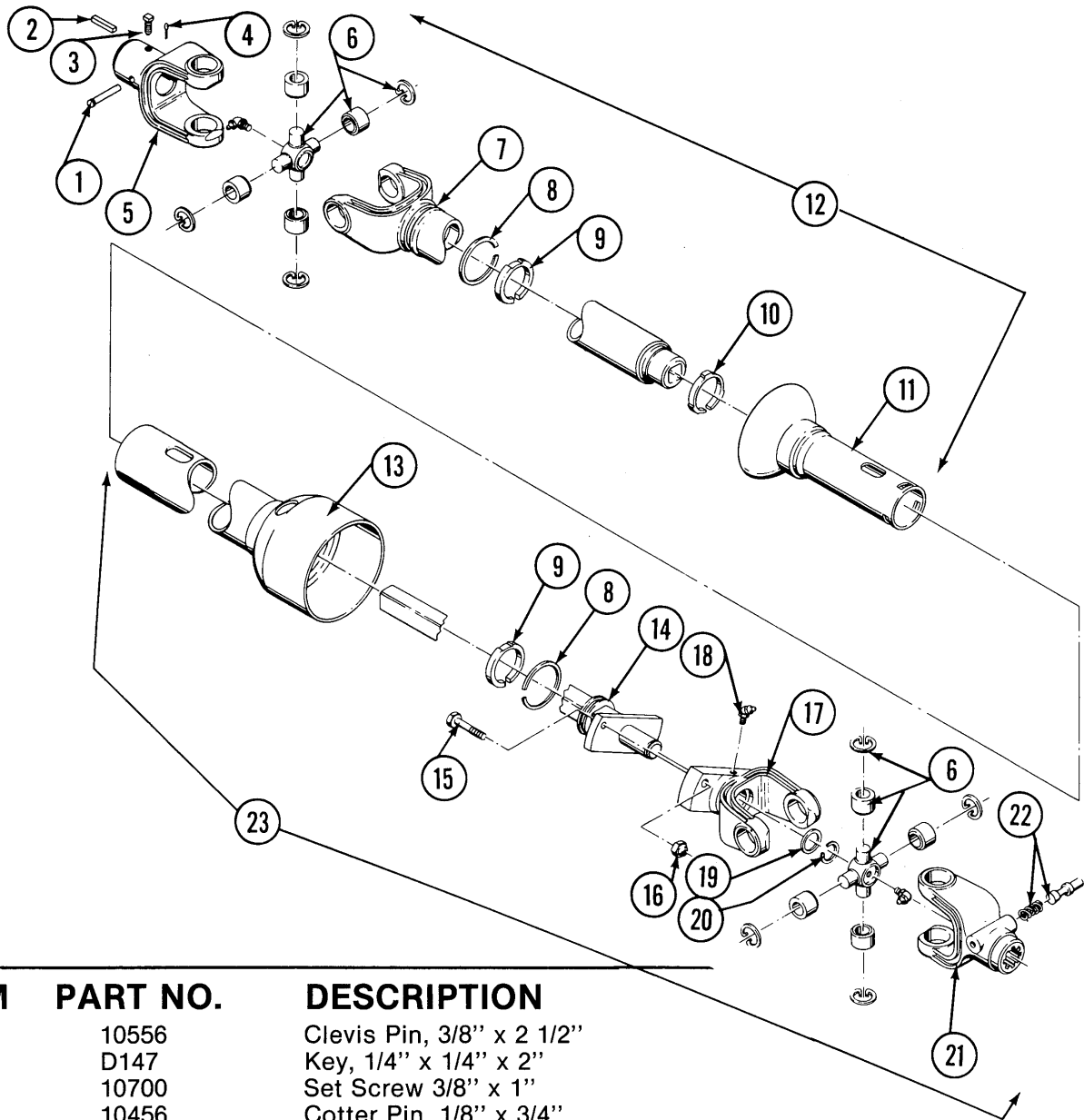


PARTS LIST

TABLE OF CONTENTS

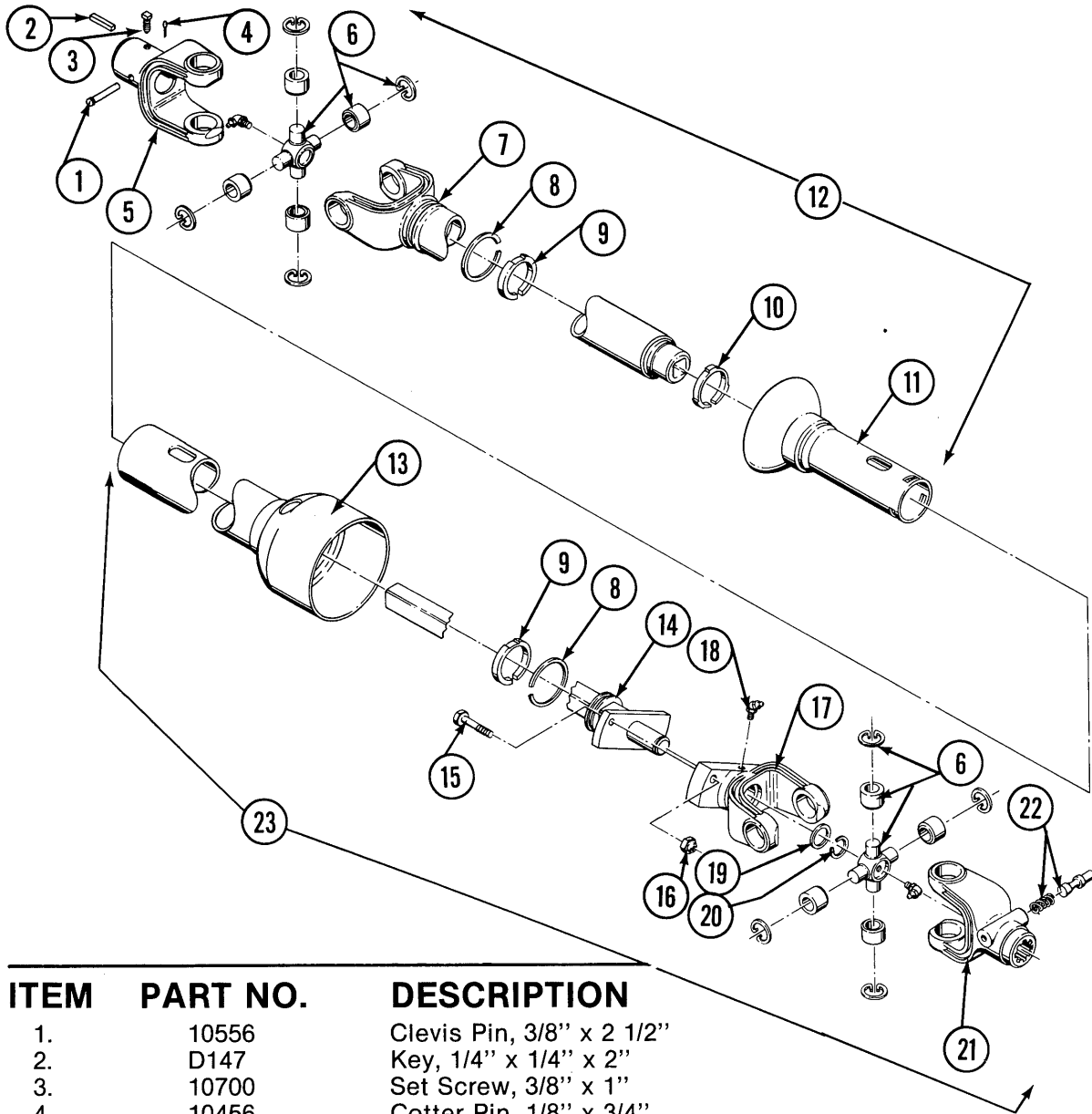
PTO ASSEMBLY - 1 3/8"-21 SPLINED YOKE	12
PTO ASSEMBLY - 1 3/4"-20 SPLINED YOKE	13
GEARBOX	14
VERTICAL AUGER - UPPER SECTION	15
VERTICAL AUGER - LOWER SECTION	16
AUGER DRIVE	18
HORIZONTAL AUGERS - BEARINGS	20
TUNNEL COVER	21
DUMP DOOR	21
GRAIN TANK - 400 AUGER WAGON	22
GRAIN TANK WITH EXTENSION - 600S AUGER WAGON	23
AXLE ASSEMBLY	24
HUB ASSEMBLY AND TIRE - 400 AUGER WAGON	25
HUB ASSEMBLY AND TIRE - 600S AUGER WAGON	26
VERTICAL AUGER FOLD CYLINDER	27
JACK ASSEMBLY	28
DECALS	29
NUMERICAL INDEX	30

PTO ASSEMBLY— 1 3/8"-21 SPLINED YOKE



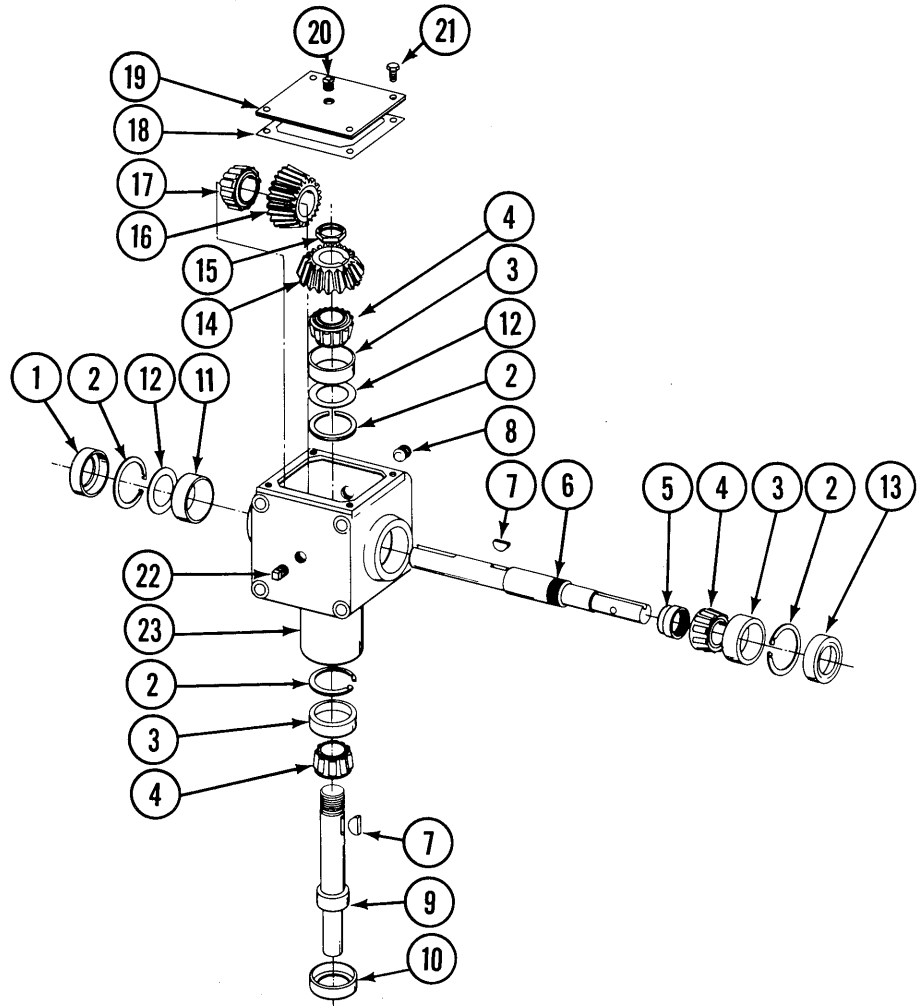
ITEM	PART NO.	DESCRIPTION
1.	10556	Clevis Pin, 3/8" x 2 1/2"
2.	D147	Key, 1/4" x 1/4" x 2"
3.	10700	Set Screw 3/8" x 1"
4.	10456	Cotter Pin, 1/8" x 3/4"
5.	R343	End Yoke
6.	R344	U-Joint Repair Kit
7.	R345	Yoke and Tube
8.	R243	Retainer Ring
9.	R247	Bearing, Nylon
10.	R246	Centralizer, Nylon
11.	R347	Guard, Inner - Machine Half
12.	R342	PTO Half - Machine
13.	R349	Guard, Outer - Tractor Half
14.	R350	Shaft, With Shear Flange
15.	10133	Screw, Hex Head Cap, 5/16" -18 x 1 1/2"
16.	10109	Lock Nut, 5/16" -18
17.	R351	Shear Yoke, With Lube Kit
18.	R352	Instamatic Lube Kit
19.	10134	Washer, 1 1/8" I.D. x 1 5/8" O.D. x 14 GA
20.	R252	Retainer Ring
21.	R353	Lock Yoke Assembly
22.	R354	"Saf-T-Pin" and Spring Kit
23.	R348	PTO Half - Tractor
A.	A488	PTO Assembly Complete, 1 3/8" -21 Splined Yoke, 1000 RPM

PTO ASSEMBLY — HEAVY DUTY 1 3/4"-20 SPLINED YOKE



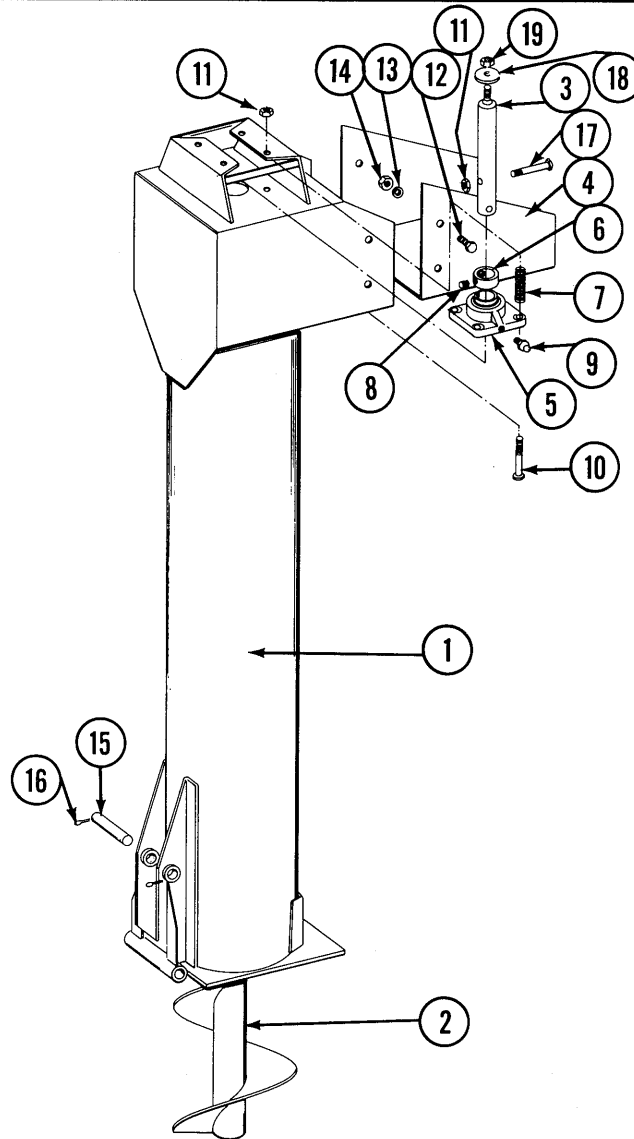
ITEM	PART NO.	DESCRIPTION
1.	10556	Clevis Pin, 3/8" x 2 1/2"
2.	D147	Key, 1/4" x 1/4" x 2"
3.	10700	Set Screw, 3/8" x 1"
4.	10456	Cotter Pin, 1/8" x 3/4"
5.	R343	End Yoke
6.	R344	U-Joint Repair Kit
7.	R345	Yoke and Tube
8.	R243	Retainer Ring
9.	R247	Bearing, Nylon
10.	R246	Centralizer, Nylon
11.	R347	Guard, Inner - Machine Half
12.	R342	PTO Half - Machine
13.	R349	Guard, Outer - Tractor Half
14.	R350	Shaft, With Shear Flange
15.	10133	Screw, Hex Head Cap, 5/16" -18 x 1 1/2"
16.	10109	Lock Nut, 5/16" -18
17.	R351	Shear Yoke, With Lube Kit
18.	R352	Instamatic Lube Kit
19.	10134	Washer, 1 1/8" I.D. x 1 5/8" O.D. x 14 GA
20.	R252	Retainer Ring
21.	R356	Lock Yoke Assembly
22.	R290	"Saf-T-Pin" and Spring Kit
23.	R355	PTO Half - Tractor
A.	A512	PTO Assembly Complete, 1 3/4" -20 Splined Yoke, 1000 RPM

GEARBOX



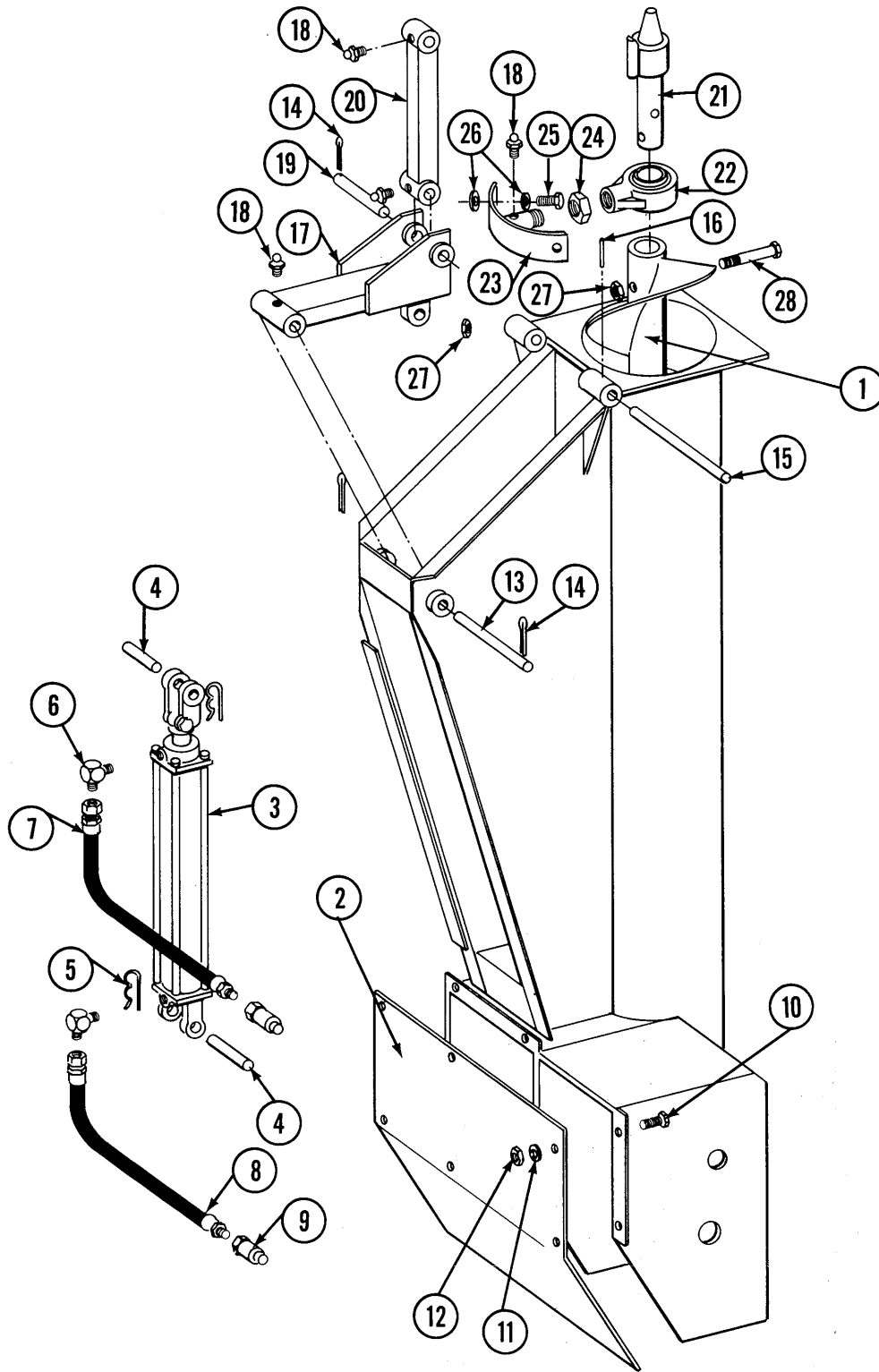
ITEM	PART NO.	DESCRIPTION
1.	R339	Seal
2.	10143	Snap Ring
3.	R190	Bearing Cup
4.	A714	Bearing Cone
5.	R330	Stake Nut, 1 5/8" -18
6.	R333	Shaft
7.	R334	Woodruff Key
8.	10142	Plug, Drain, 3/8" -18NPT
9.	R332	Shaft
10.	R302	Seal
11.	R340	Bearing Cup
12.	R338	Shim
13.	R335	Seal
14.	R329	Bevel Gear, Forged
15.	R331	Stake Nut, 1 3/8" -18
16.	R341	Bevel Gear, Forged
17.	A715	Bearing Cone
18.	R336	Gasket
19.	R328	Cover, Gearbox
20.	R306	Plug, Vent, 3/8" -18 NPT
21.	10018	Screw, Hex Head Cap, 5/16" -18 x 5/8"
22.	10121	Plug, Level, 3/8" -18 NPT
23.	R327	Gearbox Housing

VERTICAL AUGER — UPPER SECTION



ITEM	PART NO.	DESCRIPTION
1.	A1603	Upper Auger Housing, 78"
2.	A1566	Vertical Auger Weld, Right Hand, 12" x 72"
3.	A1612	Vertical Auger Top Shaft
4.	D1373	Auger Spout Extension
5.	A449	Bearing, 2", Includes Lock Collar and Grease Fitting.
6.	R265	Lock Collar, 2", Includes Set Screw
7.	D4072	Spring
8.	10080	Set Screw, 7/16" x 7/16"
9.	10641	Grease Fitting, 1/8" NPT
10.	10011	Screw, Hex Head Cap, 5/8" -11 x 5 1/2"
11.	10107	Nut, Hex Lock, 5/8" -11
12.	10002	Screw, Hex Head Cap, 3/8" -16 x 3/4"
13.	10229	Lock Washer, 3/8"
14.	10101	Hex Nut, 3/8" -16
15.	D4108	Pin, Fold Linkage
16.	10460	Cotter Pin, 1/4" x 2"
17.	10013	Screw, Hex Head Cap 5/8"-11 x 3 1/2"
18.	D2456	Washer
19.	10112	Lock Nut, 3/4" -10

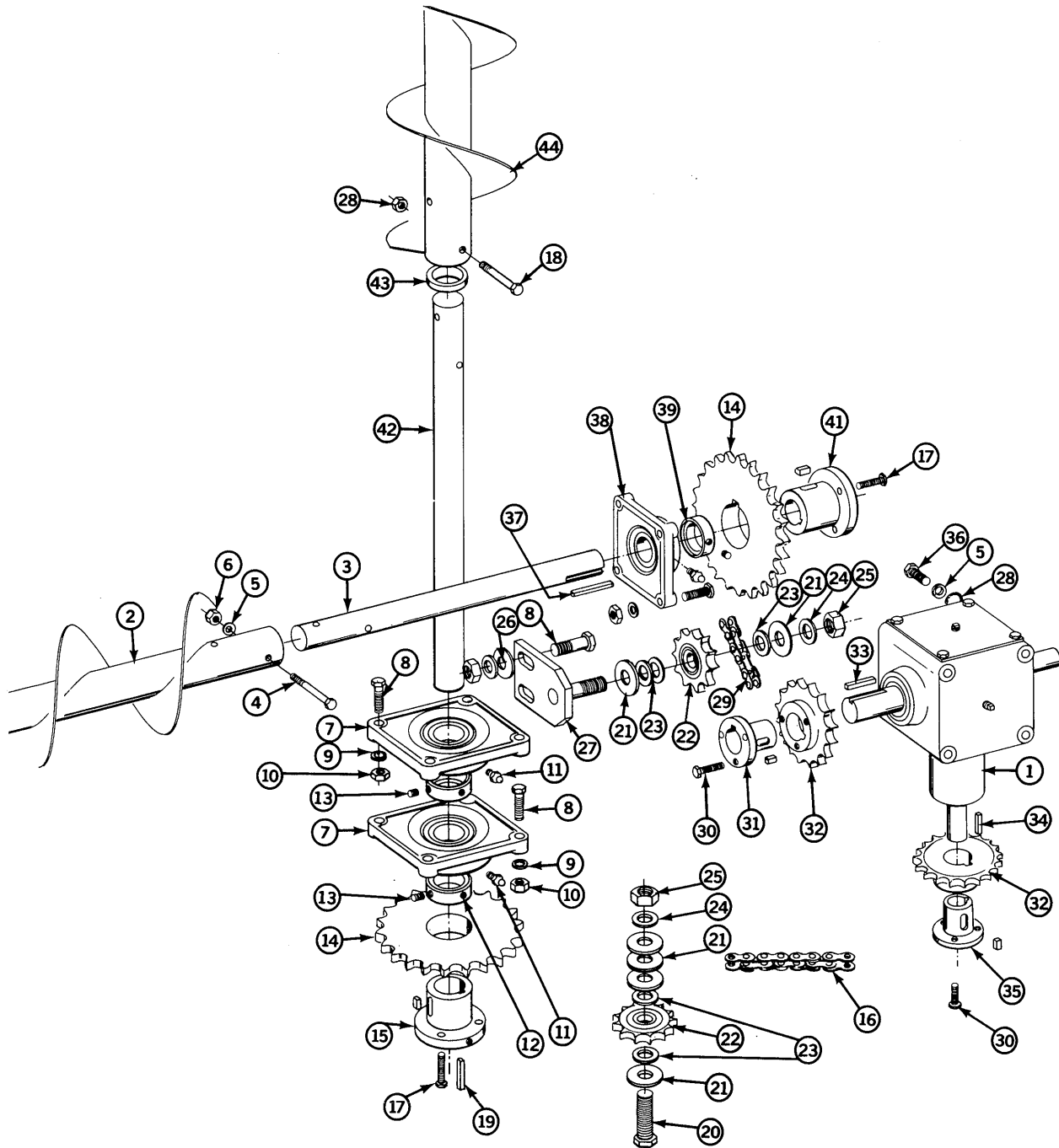
VERTICAL AUGER — LOWER SECTION



VERTICAL AUGER — LOWER SECTION

ITEM	PART NO.	DESCRIPTION
1.	A411	Auger, 12" x 6' Right Hand (Lower)
2.	D2403	Gear Box Inspection Cover
3.	A509	Hydraulic Cylinder, 2 1/2" x 20"
4.	R180	Cylinder Pin, Includes Hairpin Clip
5.	R193	Hairpin Clip Only
6.	2501-6-8	Elbow, 90°
7.	A1112	Hydraulic Hose Assembly, 1/4" x 138"
8.	A1111	Hydraulic Hose Assembly, 1/4" x 120"
9.	D4086	Hose Tip, Male, Pioneer
10.	10001	Screw, Hex Head Cap, 3/8" -16 x 1"
11.	10229	Lock Washer, 3/8"
12.	10101	Hex Nut, 3/8" -16
13.	D4106	Pin, Fold Linkage
14.	10460	Cotter Pin, 1/4" x 2"
15.	D1383	Auger Hinge Shaft
16.	10610	Roll Pin, 3/8" x 2"
17.	A463	Vertical Auger Fold
18.	10641	Grease Fitting, 1/8" NPT
19.	D4108	Pin, Fold Linkage - Auger
20.	A467	Vertical Auger Fold Arm
21.	A1542	Bullet Weld
22.	A1567	Hanger Bearing 2"
23.	A1565	Hanger Bearing Weld
24.	10115	Lock Nut, 1" NPT
25.	10008	Screw, Hex Head Cup, 5/8" -11 x 2"
26.	10217	Flat Washer
27.	10107	Hex Lock Nut, 5/8" -11
28.	10013	Screw, Hex Head Cup 5/8" -11 x 3 1/2"
	D2117	Tie Strap, 15" (Not Shown)

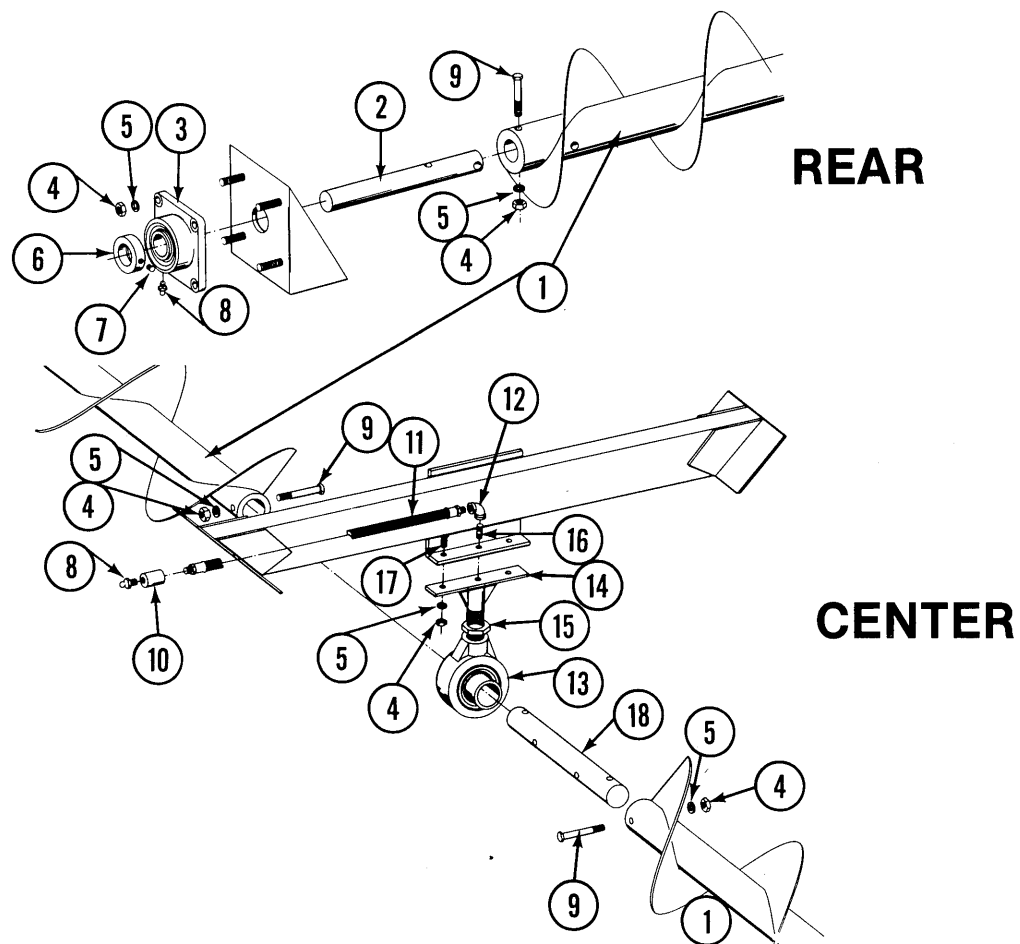
AUGER DRIVE



AUGER DRIVE

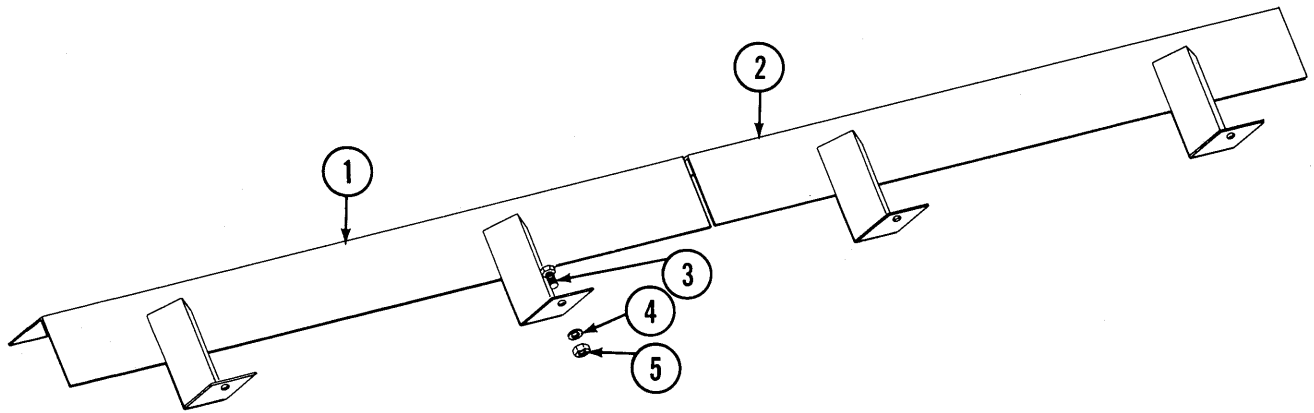
ITEM	PART NO.	DESCRIPTION
1.	A406	Gearbox
2.	A1367	Auger, Horizontal, 9" x 70"
3.	D145	Shaft, 1 1/2"
4.	10033	Screw, Hex Head Cap, 1/2"-13 x 3 1/2"
5.	10228	Lock Washer, 1/2"
6.	10102	Hex Nut, 1/2" -13
7.	A449	Bearing, 2", Includes Lock Collar
8.	10008	Screw, Hex Head Cap, 5/8"-11 x 2"
9.	10230	Lock Washer, 5/8"
10.	10104	Hex Nut, 5/8"-11
11.	10641	Grease Fitting, 1/8" NPT
12.	R265	Lock Collar, 2" Includes Set Screw
13.	10080	Set Screw, 7/16" x 7/16", Hex Socket
14.	D4117	Sprocket, 26 Tooth
15.	D4123	Bushing, Does not use set screw
	A713	Bushing, Uses set screw
	10141	Set Screw, 1/4" -20 x 3/4", Hex Socket
16.	3304-51	Chain, No. 80, 51 Links, Includes connector link and offset link
	R197	Connector Link, No. 80
	R202	Offset Link, No. 80
17.	10004	Screw, Hex Head Cap, 3/8"-16 x 1 1/4"
18.	10013	Screw, Hex Head Cap, 5/8"-11 x 3 1/2"
19.	D148	Key, 1/2" x 1/2" x 2 1/2"
20.	10028	Screw, Hex Head Cap, 3/4"-10 x 3"
21.	10218	Washer, 3/4" USS
22.	D4119	Sprocket, Idler, 12 Tooth (Includes Bearing)
	A593	Idler Bearing
23.	10215	Machinery Bushing, 3/4"
24.	10231	Lock Washer, 3/4"
25.	10105	Hex Nut, 3/4" -10
26.	10217	Washer, 5/8" USS
27.	A1572	Idler Bracket Weld
28.	10107	Hex Lock Nut, 5/8" -11
29.	3304-41	Chain, No. 80, 41 Links, Includes connector link and offset link
	R197	Connector Link, No. 80
	R202	Offset Link, No. 80
30.	10019	Screw, Hex Head Cap, 5/16"-16 x 1"
31.	D4120	Bushing, 1 1/2", Includes set screw
32.	D4118	Sprocket, 15 Tooth
33.	R361	Key, 3/8" x 1/2" x 2"
34.	D147	Key, 1/4" x 1/4" x 2"
35.	D4121	Bushing, 1 1/4"
36.	10017	Screw, Hex Head Cap, 1/2"-13 x 1 1/2"
37.	D144	Key, 3/8" x 3/8" x 2 1/2"
38.	A450	Bearing, 1 1/2", Includes set screw
39.	R266	Lock Collar, 1 1/2", Includes set screw
40.	10072	Set Screw, 3/8" x 3/8", Hex Socket
41.	D4122	Bushing, 1 1/2"
42.	D1346	Shaft, 2"
43.	D150	Spacer
44.	A411	Auger, Vertical (Lower), 12" x 6'

HORIZONTAL AUGERS – BEARINGS



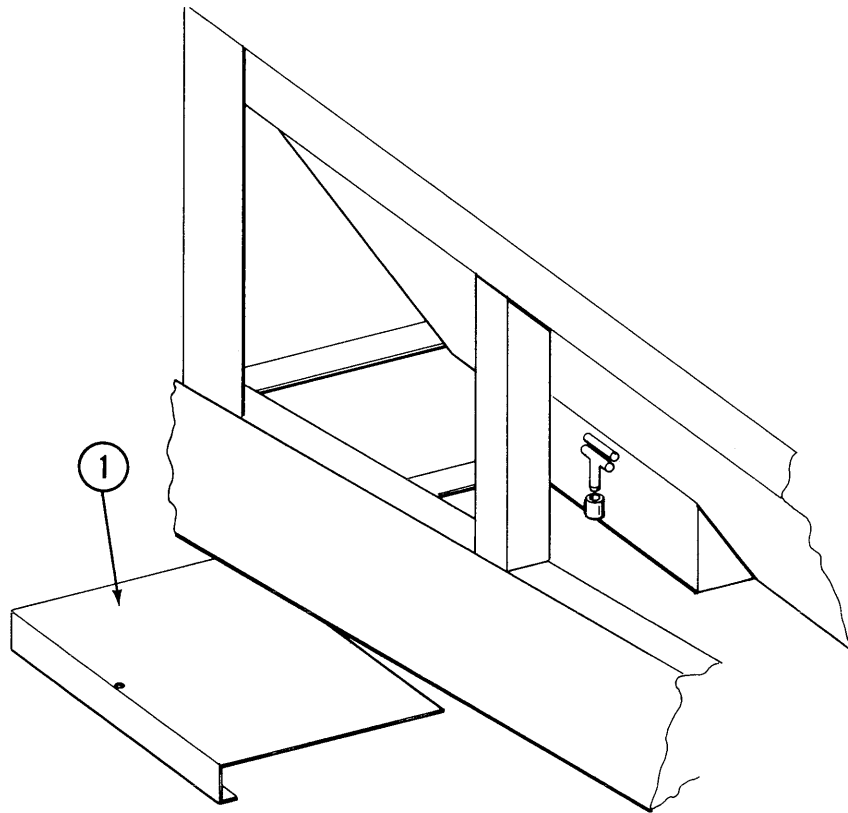
ITEM	PART NO.	DESCRIPTION
1.	A1367	Auger, 9"x70", L.H.
2.	D1447	Shaft, Rear Bearing
3.	A450	Bearing, 1½", Includes Lock Collar
4.	10102	Hex Nut, ½"-13
5.	10228	Lock Washer, ½"
6.	R266	Lock Collar, 1½" (With Set Screws)
7.	10072	Set Screw, 3/8" x 3/8"
8.	10641	Grease Fittings, 1/8" NPT
9.	10033	Screw, Hex Head Cap, ½"-13 x 3½"
10.	10125	Pipe Coupling, 1/8" NPT
11.	A504	Grease Hose, Rubber 24"
12.	10126	Elbow, 90°, 1/8" NPT
13.	A1559	Hanger Bearing w/set screw, 1½"
	D2398	Set Screw
14.	A1560	Carrier Bearing Bracket
15.	10153	Lock Nut, ¾" NPT
16.	10127	Pipe Nipple, 1/8" NPT x 1 1/2"
17.	10039	Screw, Hex Head Cap, 1/2"-13 x 1 3/4"
18.	D2404	Center Shaft

TUNNEL COVER



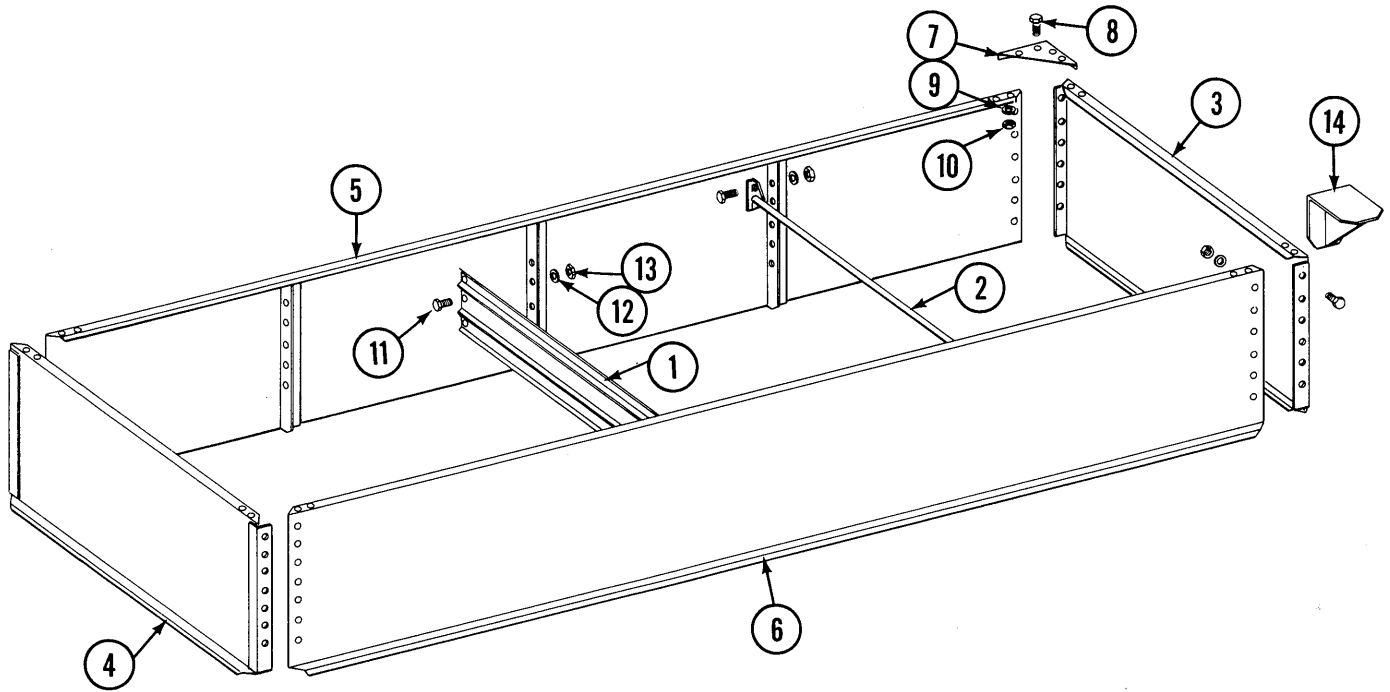
ITEM	PART NO.	DESCRIPTION
1.	A1557	Tunnel Cover, Front
2.	A1558	Tunnel Cover, Rear
3.	10001	Screw, Hex Head Cap, 3/8"-16x1"
4.	10101	Hex Nut, 3/8"-16
5.	10229	Lock Washer, 3/8"

DUMP DOOR



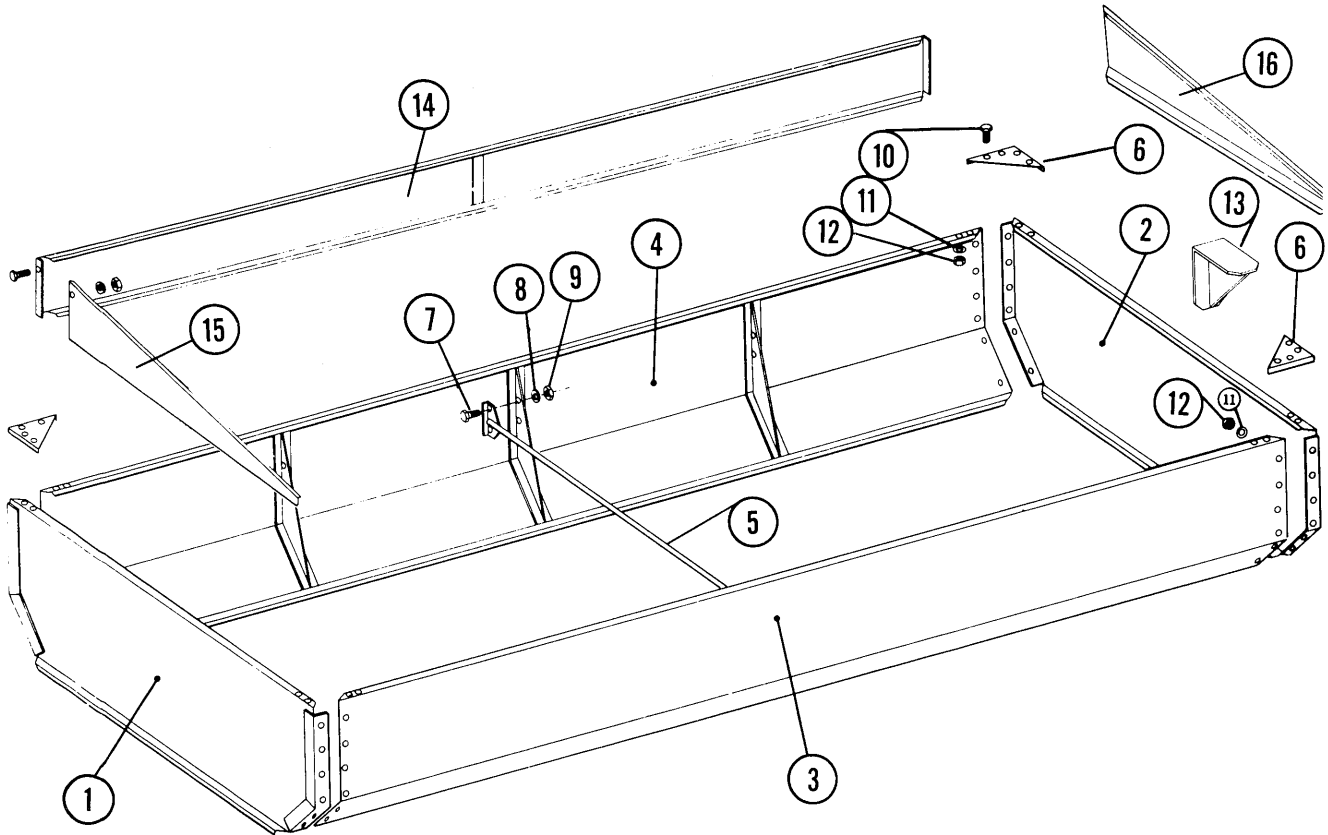
ITEM	PART NO.	DESCRIPTION
1.	D197	Door, Dump

GRAIN TANK — 400 AUGER WAGON



ITEM	PART NO.	DESCRIPTION
1.	A432	Cross Brace, Center
2.	A431	Cross Brace
3.	A1573	Panel Weld, Front
4.	A1574	Panel Weld, Rear
5.	A1575	Panel Weld, Side, L.H.
6.	A1576	Panel Weld, Side, R.H.
7.	D327	Corner Cap
8.	10001	Screw, Hex Head Cap, 3/8"-16x1"
9.	10229	Lock Washer, 3/8"
10.	10101	Hex Nut, 3/8"-16
11.	10017	Screw, Hex Head Cap, 1/2"-13 x 1 1/2"
12.	10228	Lock Washer, 1/2"
13.	10102	Hex Nut, 1/2"-13
14.	A721	Auger Stop (Must be welded in place)

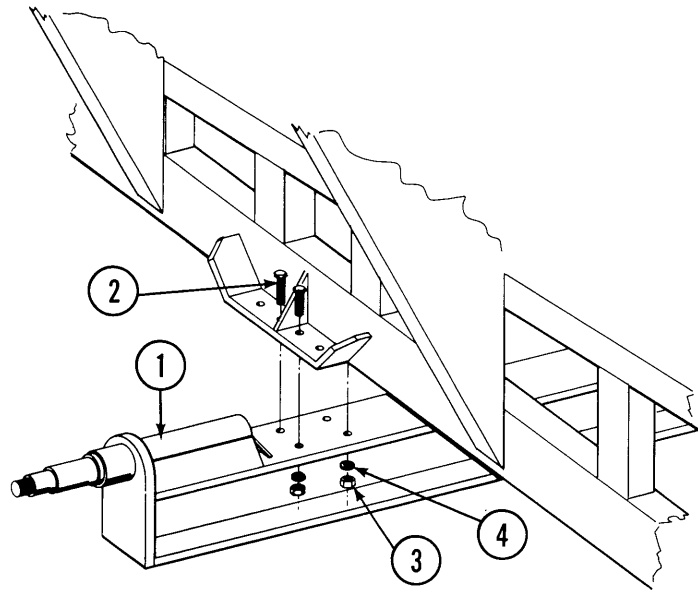
GRAIN TANK WITH EXTENSIONS 600S AUGER WAGON



ITEM	PART NO.	DESCRIPTION
1.	A717	Rear Panel Weld
2.	A718	Front Panel Weld
3.	A720	Side Panel Weld - Right Hand
4.	A719	Side Panel Weld - Left Hand
5.	A437	Cross Brace Weld
6.	D327	Outer Corner Gusset
7.	10017	Screw, Hex Head Cap, 1/2"-13 x 1 1/2"
8.	10228	Lock Washer, 1/2"
9.	10102	Hex Nut, 1/2" -13
10.	10001	Screw, Hex Head Cap, 3/8"-16 x 1"
11.	10229	Lock Washer, 3/8"
12.	10101	Hex Nut, 3/8"-16
13.	A721	Auger Stop (Must be welded in place)
14.	A724	Side Extension Weld
15.	A723	Tapered Extension, Rear
16.	A722	Tapered Extension, Front

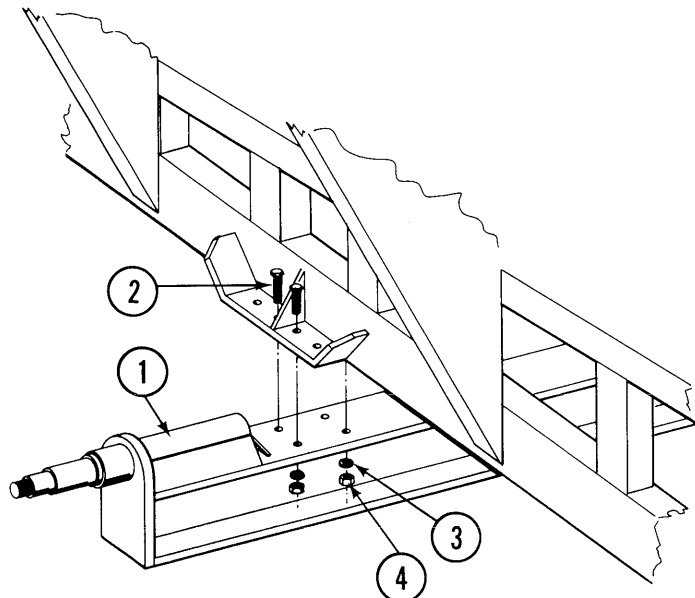
AXLE ASSEMBLY

- 400



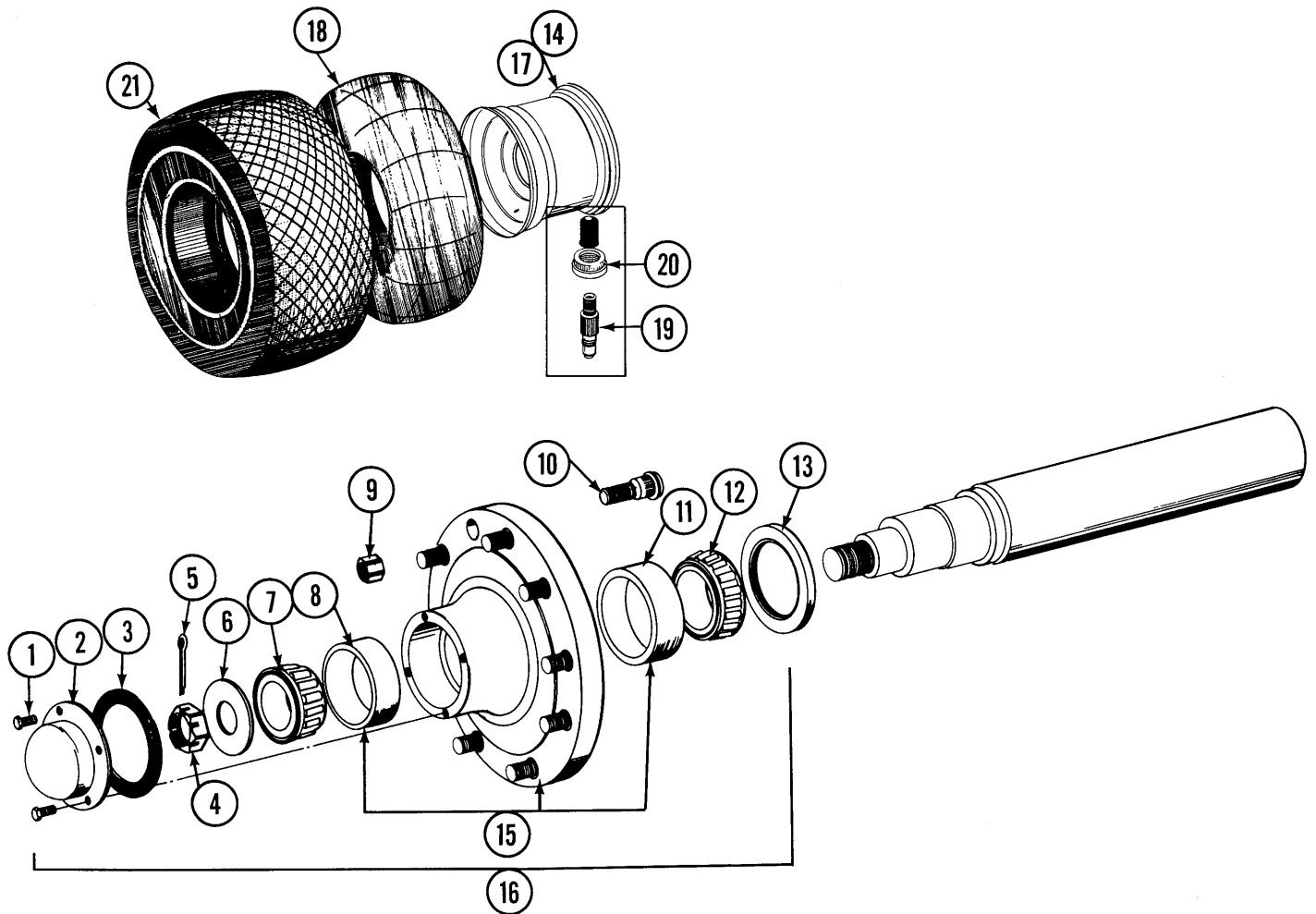
ITEM	PART NO.	DESCRIPTION
1.	A740	Axle Sub-Weld, Standard
	A1690	Axle Sub-Weld, 120"
2.	10027	Screw, Hex Head Cap, 3/4"-10 x 2 1/2"
3.	10105	Hex Nut, 3/4" -10
4.	10231	Lock Washer, 3/4"

- 600S



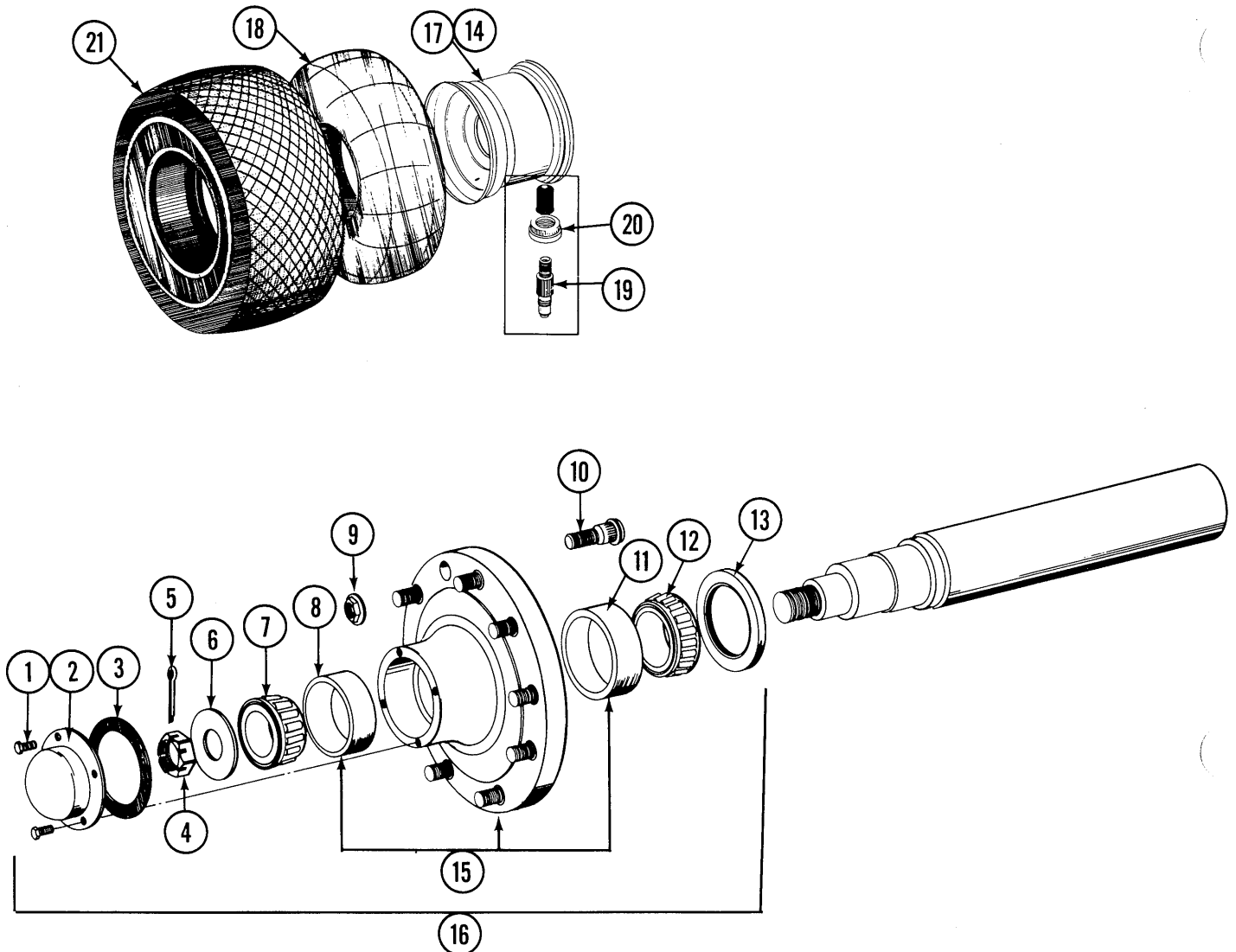
ITEM	PART NO.	DESCRIPTION
1.	A739	Axle Sub-Weld, Standard
	A1694	Axle Sub-Weld, 120
2.	10027	Screw, Hex Head Cap, 3/4" -10 x 2 1/2"
3.	10231	Lock Washer, 3/4"
4.	10105	Hex Nut, 3/4" -10

HUB ASSEMBLY AND TIRE — 400 AUGER WAGON



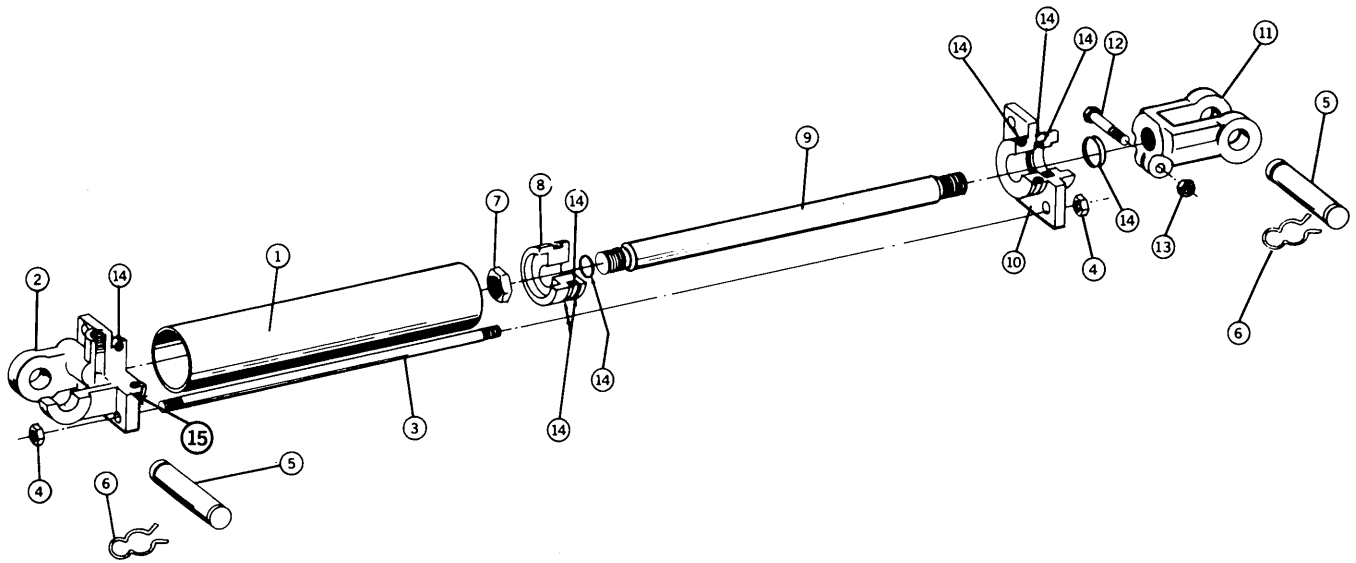
ITEM	PART NO.	DESCRIPTION
1.	10043	Screw, Hex Head Cap, 5/16" - 18 x 3/4"
2.	D1529	Hub Cap
3.	D1536	Seal, Hub Cap
4.	10070	Slotted Hex Nut, 1 1/4" - 12 UNF
5.	10460	Cotter Pin, 1/4" x 2"
6.	10139	Washer, 1 1/4"
7.	A705	Bearing Cone, Outer
8.	R322	Bearing Race, Outer
9.	R256	Lug, Hex Nut, 3/4" - 16
10.	R257	Stud Bolt, 3/4" - 16 x 2 1/2"
11.	R323	Bearing Race, Inner
12.	A779	Bearing Cone, Inner (No. 39585 Timken; 2 1/2" I.D.)
13.	A706	Seal
14.	D2411	Plug, Rubber
15.	A703	Hub, With Bearing Cups
16.	A460	Hub Assembly, Less Spindle (W/2 1/2" I.D. Bearing, Timken, No. 39585)
17.	A461	Wheel, DW 20" x 26"
18.	D1531	Tube, 23.1 x 26"
19.	D1527	Valve Stem (Includes Core and Cap)
20.	D1528	Nut, Nylon
21.	D1330	Tire, 23.1" x 26", 8 Ply
	D2365	Tire, 23.1 x 26", 10 Ply

HUB ASSEMBLY AND TIRE - 600S AUGER WAGON



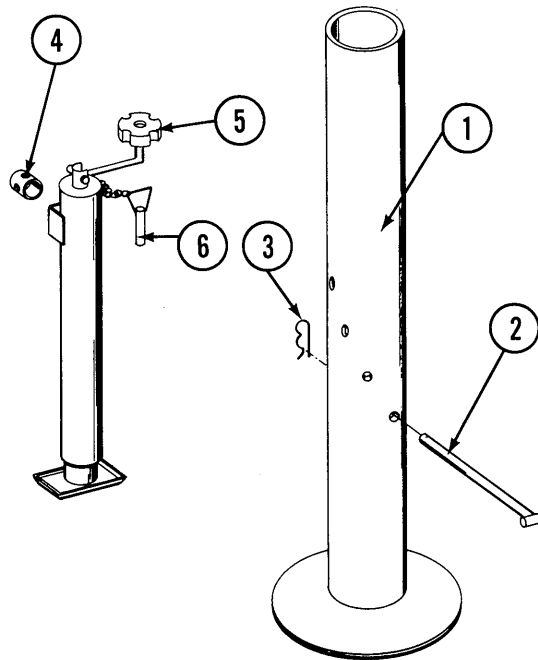
ITEM	PART NO.	DESCRIPTION
1.	10054	Screw, Hex Head Cap, 5/16" -18 x 1/2"
2.	D1360	Hub Cap (4 Holes)
3.	D1359	Seal, Hub Cap (4 Holes)
4.	10726	Slotted Hex Nut, 2"-12
5.	10471	Cotter Pin, 3/8" x 2 1/2"
6.	10198	Washer, 2"
7.	A530	Bearing Cone, Outer
8.	R192	Bearing Race, Outer
9.	10625	Flange Nut, 3/4" -16
10.	R257	Stud Bolt, 3/4" -16 x 2 1/2"
11.	R191	Bearing Race, Inner
12.	A531	Bearing Cone, Inner
13.	A532	Seal, Hub
14.	D2411	Plug, Rubber
15.	A529	Hub, With Bearing Cups (4 Holes)
16.	A444	Hub Assembly, Less Spindle (4 Holes)
17.	A446	Wheel, 21" x 32", 10 Bolt
	A445	Wheel, 27" x 32", Use with 120" Axle
18.	D1525	Tube, 24.5" x 32"
	D1526	Tube, 30.5" x 32" Use with 120" Axle
19.	D1527	Valve Stem (Includes Core and Cap)
20.	D1528	Nut, Nylon
21.	D4093	Tire, 24.5" x 32", 12 Ply
	D4092	Tire, 30.5" x 32", 12 Ply, Use with 120" Axle

VERTICAL AUGER FOLD CYLINDER



ITEM	PART NO.	DESCRIPTION
1.	R324	Cylinder Barrel
2.	R167	Clevis, Bottom
3.	R326	Tie Rod
4.	R171	Hex Nut, 7/16" -14
5.	R180	Clevis Pin (Includes Hairpin)
6.	R193	Hairpin Only
7.	R170	Jam Nut, Hex, 7/8"-14 NF
8.	R166	Piston
9.	R325	Piston Rod
10.	R165	Piston Rod Guide
11.	R169	Clevis, Piston Rod
12.	10047	Screw, Hex Head Cap, 3/8"-16 x 1 3/4"
13.	10101	Hex Nut, 3/8"-16
14.	R156	Seal Kit
15.	10170	Pipe Plug, 1/2"
A.	A509	Cylinder, Complete, 2 1/2" x 20"

JACK STAND AND JACK ASSEMBLY



ITEM	PART NO.	DESCRIPTION
1.	A407	Jack Stand
2.	A741	Pin
3.	10671	Hair Pin Clip, No. 6
4.	D1254	Bracket, Jack Swivel
5.	4100-2	Jack Assembly
6.	R255	Hammer Blow Pin Kit

DECALS



1



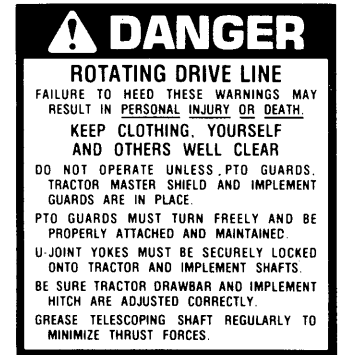
2



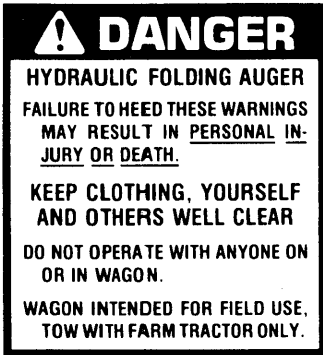
3



4



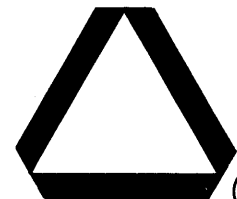
5



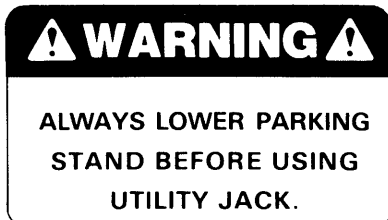
6



7



10



8



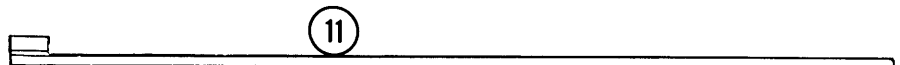
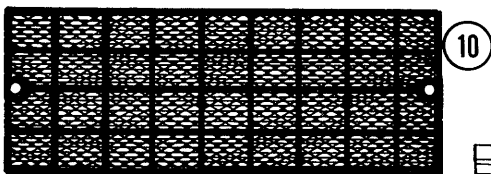
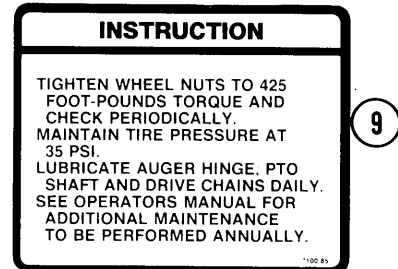
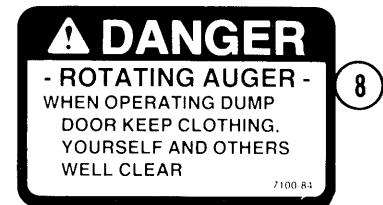
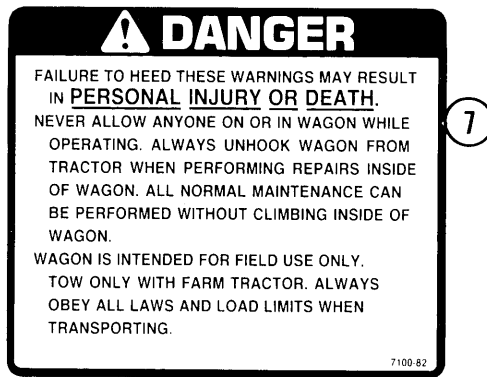
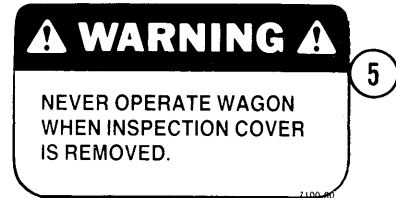
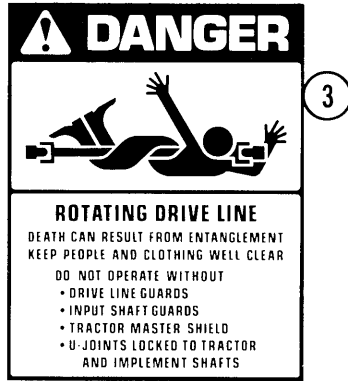
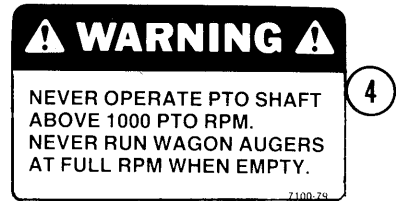
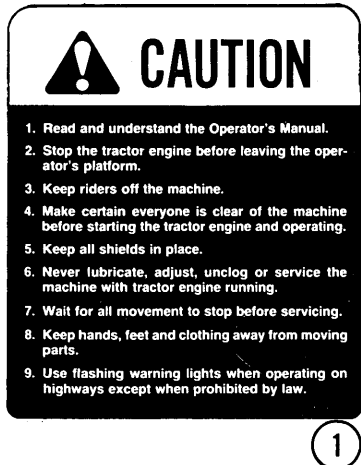
9

ITEM	PART NO.	DESCRIPTION
1.	D937	Serial Number Plate
2.	7100-7	Decal, "KINZE", 20" x 22"
3.	7100-8	Decal, "600"
4.	7100-13	Decal, "400"
5.	7100-11	Decal, "Danger, Rotating Drive Line"
6.	7100-12	Decal, "Danger, Hydraulic Folding Auger"
7.	7100-16	Decal, "Warning, Do Not Run at Full RPM"
8.	7100-10	Decal, "Warning, Always Lower Parking Stand"
9.	7100-15	Stripping, 50 Yard Roll
10.	7100-36	Decal, SMV Emblem
11.	7100-90	Decal, Warning



11

DECALS, REFLECTORS AND TIE STRAPS



ITEM	PART NO.	DESCRIPTION
1.	7100-46	Decal, Caution
2.	7100-56	Decal, Warning
3.	7100-67	Decal, Danger
4.	7100-79	Decal, Warning
5.	7100-80	Decal, Warning
6.	7100-81	Decal, Danger
7.	7100-82	Decal, Danger
8.	7100-84	Decal, Danger
9.	7100-85	Decal, Instruction
10.	7200-3	Reflector, Red
11.	D2117	Tie Strap, 14 1/2"
12.	R155	Blue Paint, Aerosol (Not Shown)
	R439	Blue Paint, Quart (Not Shown)
	R440	Blue Paint, Gallon (Not Shown)
13.	7100-86	Decal, Danger



NUMERICAL INDEX

PART NO.	PAGE
2501-6-8	17
3304-41	19
3304-51	19
4100-2	28
7100-7	29
7100-8	29
7100-10	29
7100-11	29
7100-12	29
7100-13	29
7100-15	29
7100-16	29
7100-36	29
7100-46	29A
7100-56	29A
7100-67	29A
7100-79	29A
7100-80	29A
7100-81	29A
7100-82	29A
7100-84	29A
7100-85	29A
7100-86	29A
7100-90	29
7200-3	29A
10001	17, 21, 22, 23
10002	15
10004	19
10008	17, 19
10011	15
10013	15, 17, 19
10017	19, 22, 23
10018	14
10019	19
10027	24
10028	19
10033	19, 20
10039	20
10043	25
10047	27
10054	26
10070	25
10072	19, 20
10080	15, 19
10101	15, 17, 21, 22, 23, 27
10102	19, 20, 22, 23
10104	19
10105	19, 24
10107	15, 17, 19
10109	12, 13
10112	15
10115	17
10121	14
10125	20
10126	20
10127	20
10133	12, 13
10134	12, 13
10139	25
10141	19
10142	14
10143	14
10153	20
10170	27
10198	26
10215	19
10217	17, 19
10218	19
10228	19, 20, 22, 23
10229	15, 17, 21, 22, 23
10230	19
10231	19, 24
10456	12, 13
10460	15, 17, 25
10471	26
10556	12, 13
10610	17
10625	26
10641	15, 17, 19, 20
10671	28
10700	12, 13
10726	26

PART NO.	PAGE
A406	19
A407	28
A411	17, 19
A431	22
A432	22
A437	23
A444	26
A445	26
A446	26
A449	15, 19
A450	19, 20
A460	25
A461	25
A463	17
A467	17
A488	12
A504	20
A509	17, 27
A512	13
A529	26
A530	26
A531	26
A532	26
A593	19
A703	25
A705	25
A706	25
A713	19
A714	14
A715	14
A717	23
A718	23
A719	23
A720	23
A721	22, 23
A722	23
A723	23
A724	23
A739	24
A740	24
A741	28
A779	25
A1111	17
A1112	17
A1367	19, 20
A1542	17
A1557	21
A1558	21
A1559	20
A1560	20
A1565	17
A1566	15
A1567	17
A1572	19
A1573	22
A1574	22
A1575	22
A1576	22
A1603	15
A1612	15
A1690	24
A1694	24

PART NO.	PAGE
D144	19
D145	19
D147	12, 13, 19
D148	19
D150	19
D197	21
D327	22, 23
D937	29
D1254	28
D1330	25
D1346	19
D1359	26
D1360	26
D1373	15
D1383	17
D1447	20
D1525	26
D1526	26
D1527	25, 26
D1528	25, 26
D1529	25
D1531	25
D1536	25
D2117	17, 29A
D2365	25
D2398	20
D2403	17
D2404	20
D2411	25, 26
D2456	15
D4072	15
D4086	17
D4092	26
D4093	26
D4106	17
D4108	15, 17
D4117	19
D4118	19
D4119	19
D4120	19
D4121	19
D4122	19
D4123	19

PART NO.	PAGE
R155	29A
R156	27
R165	27
R166	27
R167	27
R169	27
R170	27
R171	27
R180	17, 27
R190	14
R191	26
R192	26
R193	17, 27
R197	19
R202	19
R243	12, 13
R246	12, 13
R247	12, 13
R252	12, 13
R255	28
R256	25
R257	25, 26
R265	15, 19
R266	19, 20
R290	13
R302	14
R306	14
R322	25
R323	25
R324	27
R325	27
R326	27
R327	14
R328	14
R329	14
R330	14
R331	14
R332	14
R333	14
R334	14
R335	14
R336	14
R338	14
R339	14
R340	14
R341	14
R342	12, 13
R343	12, 13
R344	12, 13
R345	12, 13
R347	12, 13
R348	12
R349	12, 13
R350	12, 13
R351	12, 13
R352	12, 13
R353	12
R354	12
R355	13
R356	13
R361	19
R439	29A
R440	29A

