

**MODEL 600HD/800/1200
GRAIN AUGER WAGON**

**OPERATOR & PARTS
MANUAL**

M0131

Rev. 10/06

This manual is applicable to: Model 600HD/800/1200 Grain Auger Wagons

Record the model number and serial number of your grain auger wagon with date purchased below:

Model Number _____

Serial Number _____

Date Purchased _____

SERIAL NUMBER

The serial number provides important information about your grain auger wagon and may be required to obtain the correct replacement part.

The serial number plate is located on the front right hand corner of the grain auger wagon frame. It is suggested that the serial number be recorded in the space provided above. Always provide the serial number and model number when ordering parts from your KINZE® Dealer or anytime correspondence is made with KINZE Manufacturing, Inc.

00131-4



Model 1200, Serial No. 1723-1732

Model 800, Serial No. 1563-1987

Revision 4/98 Adds:

Model 600HD, Serial No. (79)49 & On, (80)107 & On, (81)179 & On, (82)1011 & On, 1011-1030

Model 800, Serial No. (79)01 & On, (80)49 & On, (81)201 & On, (82)1001 & On, 1287-1562

Model 1200, Serial No. (82)1261 & On, 1463-1722

KINZE® is a registered trademark of KINZE Manufacturing, Inc.

TABLE OF CONTENTS


| | |
|--|------------|
| TO THE OWNER | 1-1 |
| WARRANTY | 1-2 |
| INTRODUCTION | 2-1 |
| SPECIFICATIONS | 3-1 |
| SAFETY PRECAUTIONS | |
| Grain Auger Wagon | 4-1 |
| Grain Auger Wagon Driveline | 4-3 |
| | |
| LUBRICATION | |
| Drive Chains | 5-1 |
| Lubrication Chart | 5-2 |
| Wheel Bearings | 5-1 |
| | |
| OPERATION | |
| Dump Door | 6-2 |
| Initial Preparation Of The Wagon | 6-1 |
| Tractor Preparation And Hookup | 6-1 |
| Unloading | 6-2 |
| | |
| MAINTENANCE | |
| Auger Drive Chains | 7-1 |
| Auger Timing | 7-2 |
| Preparation For Storage | 7-3 |
| Shear Bolt Protection | 7-1 |
| Tire Pressure | 7-1 |
| Wheel Bearing Replacement | 7-3 |
| Wheel Nuts | 7-1 |
| | |
| PARTS LIST INDEX | P1 |
| | |
| PARTS SECTION NUMERICAL INDEX | a |

TO THE OWNER

KINZE Manufacturing, Inc. would like to thank you for your patronage. We appreciate your confidence in KINZE® equipment. Your KINZE® Grain Auger Wagon has been carefully designed and sturdily built to provide dependable operation in return for your investment.

This manual has been prepared to aid you in the operation and maintenance of the Grain Auger Wagon . It should be considered a permanent part of the machine and remain with the machine when you sell it.

It is the responsibility of the user to read and understand the Operator & Parts Manual in regards to safety, operation, lubrication and maintenance prior to operation of this equipment. It is the user's responsibility to inspect and service the machine routinely as directed in the Operator & Parts Manual. We have attempted to cover all areas of safety, operation, lubrication and maintenance; however, there may be times when special care must be taken to fit your conditions.

Throughout this manual the symbol  and the words **NOTE, CAUTION, WARNING and DANGER** are used to call your attention to important safety information. The definition of each of these terms used follows:

NOTE: Indicates a special point of information.

CAUTION: Indicates that a failure to observe can cause damage to the machine or equipment.



WARNING: Indicates that a failure to observe can cause damage to the machine or equipment and/or personal injury.



DANGER: Indicates that a failure to observe can cause most serious damage to the machine or equipment and/or most serious personal injury.



WARNING: Some photos in this manual may show safety covers or shields removed for visual clarity. **NEVER OPERATE** the machine without all safety covers and shields in place.

NOTE: Some photos in this manual may have been taken of prototype machines. Production machines may vary in appearance.

NOTE: Some photos and illustrations in this manual show optional attachments installed. Contact your KINZE® Dealer for purchase of optional attachments.



DANGER: Because of load capacities on bridges and roads and because the machine is not equipped with brakes, the machine is not intended for hauling loads on public roadways. It is the operator's responsibility to be aware of and follow federal, state/provincial and local regulations in this regard.

WARRANTY

The KINZE® Limited Warranty for your new machine is stated on the back of the retail purchaser's copy of the Warranty And Delivery Report form.

Warranty, within the warranty period, is provided as part of KINZE's support program for registered KINZE® products which have been operated and maintained as described in this manual. Evidence of equipment abuse or modification beyond original factory specifications will void the warranty. Normal maintenance, service and repair is not covered by KINZE® warranty.

To register your KINZE® product for warranty, a Warranty And Delivery Report form must be completed by the KINZE® Dealer and signed by the retail purchaser, with copies to the Dealer, to the retail purchaser and to KINZE Manufacturing, Inc. Registration must be completed and sent to KINZE Manufacturing, Inc. within 30 days of delivery of the KINZE® product to the retail purchaser. KINZE Manufacturing, Inc. reserves the right to refuse warranty on serial numbered products which have not been properly registered.

Additional copies of the Limited Warranty can be obtained through your KINZE® Dealer.

If service or replacement of failed parts which are covered by the Limited Warranty are required, it is the user's responsibility to deliver the machine along with the retail purchaser's copy of the Warranty And Delivery Report to the KINZE® Dealer for service. KINZE® warranty does not include cost of travel time, mileage, hauling or labor. Any prior arrangement made between the Dealer and the retail purchaser in which the Dealer agrees to absorb all or part of this expense should be considered a courtesy to the retail purchaser.

KINZE® warranty does not include cost of travel time, mileage, hauling or labor.

INTRODUCTION

This manual has been written to cover the KINZE® Grain Auger Wagons 600HD, 800 and 1200.

The information and photos used in this manual were current at the time of printing. However, due to KINZE's continual attempt to improve its product, possible on-line production changes may cause your machine to appear slightly different in detail. KINZE Manufacturing, Inc. reserves the right to change specifications or design without notice and without incurring obligation to install the same on machines previously manufactured.

Right hand and left hand as used throughout this manual is determined by facing in the direction the machine will travel when in use.

00131-1



Model 600HD

00131-3



Model 800

00131-2



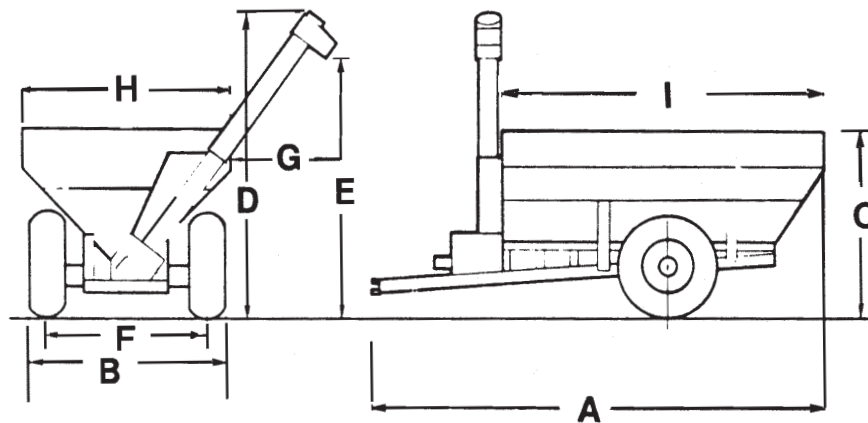
Model 1200

INTRODUCTION

SPECIFICATIONS

600HD/800

(WGN90a)

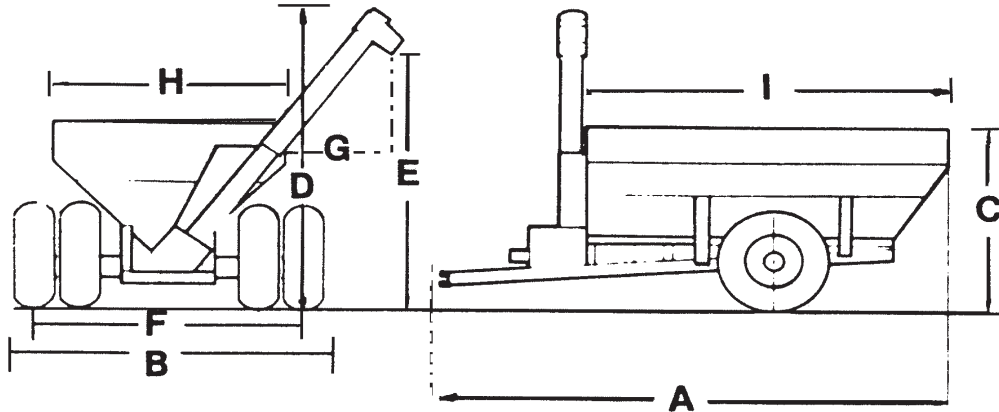


| | 600HD | 800 |
|---|--|---|
| OVERALL DIMENSIONS | | |
| (A) Total Length | 27' 0" | 27' 0" |
| (B) Width To Outside Of Tire | 11' 3" | 11' 3" |
| (C) Height (To Top Of Tank) | 8' 10" | 9' 2" |
| (D) Height (To Top Of Auger) | 15' 5" | 15' 5" |
| (E) Height (To Tip Of Spout) | | |
| With Tip Extension | 12' 7" | 12' 7" |
| Without Tip Extension** | 13' 0" | 13' 0" |
| (F) Width (Tire Center To Center) | 8' 9" | 8' 9" |
| (G) Side Of Wagon To Tip Of Spout | | |
| With Tip Extension | 6' 0" | 5' 0" |
| Without Tip Extension** | 4' 4" | 3' 4" |
| GRAIN TANK SPECIFICATIONS | | |
| (H) Width - Grain Tank | 8' 0" | 10' 0" |
| (I) Length - Grain Tank | 20' 0" | 20' 0" |
| Construction | 12 Gauge Steel Side Panels W/10 Gauge End Panels | |
| Total Level Full Capacity(15% Moisture Corn) | 600 Bu. | 800 Bu. |
| WEIGHTS | | |
| Wagon Weight - Empty | 10,850 Lbs. | 11,120 Lbs. |
| Wagon Weight - Loaded | 47,250 Lbs. | 56,720 Lbs. |
| Hitch Weight - Empty | 1900 Lbs. | 2200 Lbs. |
| Hitch Weight - Loaded | 4400 Lbs. | 5950 Lbs. |
| UNLOADING TIME* | 2 Minutes | 2 1/2" Minutes |
| AUGERS | | |
| Vertical Auger | 16" Full Pitch R.H. | |
| Horizontal Auger | | |
| Front | 12" Full Pitch L.H. | |
| Center | None | |
| Rear | 12" 2/3 Pitch L.H. | |
| TRACTOR REQUIREMENTS | 135-150HP | Large 2WD Or 4WD |
| SUSPENSION | | |
| Spindle | 4 1/2" Diameter | 4 1/2" Diameter |
| Hub | 10 Bolt | 10 Bolt |
| Wheel Size | 21 x 32 | 27 x 32 |
| Tire Size | 24.5x32, 12 Ply | 21 x 32 (Optional) 30.5x32, 12 Ply 24.5x32, 16 Ply (Optional) |
| * Time varies with RPM and moisture content of grain. | | |
| ** Spout tip extension is standard equipment on all models. | | |

SPECIFICATIONS

1200

(WGN90)



OVERALL DIMENSIONS

| | | |
|-----|-------------------------------|--------------|
| (A) | Total Length | 31' 10" |
| (B) | Width To Outside Of Tire | 13' 6" |
| (C) | Height (To Top Of Tank) | 10' 6" |
| (D) | Height (To Top Of Auger) | 15' 5" |
| (E) | Height (To Tip Of Spout) | |
| | With Extension | 12' 7" |
| | Without Extension** | 13' 0" |
| (F) | Width (Tire Center To Center) | 4' 8"/11' 4" |
| (G) | Side Of Wagon To Tip Of Spout | |
| | With Tip Extension | 4' 4" |
| | Without Tip Extension** | 2' 8" |

GRAIN TANK SPECIFICATIONS

| | | |
|-----|---|--|
| (H) | Width - Grain Tank | 11' 6" |
| (I) | Length - Grain Tank | 24' 0" |
| | Construction | 12 Gauge Steel Side Panels W/10 Gauge End Panels |
| | Total Level Full Capacity (15% Moisture Corn) | 1120 Bu. |

WEIGHTS

| | |
|-----------------------|-------------|
| Wagon Weight - Empty | 17,840 Lbs. |
| Wagon Weight- Loaded | 84,880 Lbs. |
| Hitch Weight - Empty | 3060 Lbs. |
| Hitch Weight - Loaded | 7160 Lbs. |

UNLOADING TIME*

4 1/2 Min.

AUGERS

| | |
|------------------|---------------------|
| Vertical Auger | 16" Full Pitch R.H. |
| Horizontal Auger | |
| Front | 12" Full Pitch L.H. |
| Center | 12" Full Pitch L.H. |
| Rear | 12" 2/3 Pitch L.H. |

TRACTOR REQUIREMENTS

4WD

SUSPENSION

| | |
|------------|----------------------------|
| Spindle | 4 1/2" Diameter |
| Hub | 10 Bolt |
| Wheel Size | 21x32 |
| | 27x32 (Optional) |
| Tire size | 24.5x32, 16 Ply |
| | 30.5x32, 16 Ply (Optional) |

* Time varies with RPM and moisture content of grain.

** Spout tip extension is standard equipment on all models.


SAFETY PRECAUTIONS

GRAIN AUGER WAGON

Safe and careful operation of the tractor and auger wagon at all times will contribute significantly to the prevention of accidents.

Since a large portion of accidents occur as a result of fatigue or carelessness, safety practices should be of utmost concern. Read and understand the instructions provided in this manual and on the warning signs. Review these instructions frequently! Listed below are other safety suggestions that should become common practice.

 **At all times keep children off of and out of the auger wagon.**


 **Never permit any persons other than the operator to ride on the tractor and never permit persons to ride on or in the wagon at any time.**


 **Always keep hands, feet and clothing away from moving parts.**


 **Do not wear loose-fitting clothing which may catch in moving parts.**


 **Always wear protective clothing, substantial shoes and suitable hearing and eye sight protectors applicable for the situation.**

 **Before operation, be sure there are no tools lying on or in the auger wagon.**

 **Make certain tractor is in safe operating condition with adequate braking capabilities, especially when operating on uneven terrain.**

 **Never operate the auger wagon without PTO driveline guards, tractor master shield and implement shields in place. Make certain PTO driveline guards turn freely and are properly attached.**

 **Use a tractor equipped with a roll-over-protective-system and fasten your seat belt prior to starting the engine.**

 **Do not allow anyone to stand between the tongue or hitch and the towing vehicle when backing up to the auger wagon.**



Because of load capacities on bridges and roads and because the wagon is not equipped with brakes, the wagon is not intended for hauling loads on public roadways. It is the operator's responsibility to be aware of and follow federal, state/provincial and local regulations in this regard.



If the auger wagon is going to be transported on a public highway, a safety chain should be obtained and installed. Always follow federal, state/provincial and local regulations regarding a safety chain when towing farm equipment on a public highway. Only a safety chain (not an elastic or nylon/plastic tow strap) should be used to retain the connection between the towing and towed machines in the event of separation of the primary attaching system.



Always use adequate lights or safety warnings when transporting the wagon on public roads and after dark. Check with local law enforcement agencies for specific requirements.



Always make certain U-joint yokes are securely locked on tractor and implement shaft before operating wagon.



Be aware of bystanders, particularly children! Always look around to make sure it is safe to start the engine of the towing vehicle or move the auger wagon. This is particularly important with higher noise levels and quiet cabs, as you may not hear people shouting.



Be especially observant of the operating area and terrain. Watch for holes, rocks or other hidden hazards. Always inspect the area prior to operation. DO NOT operate near the edge of drop-offs or banks or on steep slopes as overturn may result. Operate up and down (not across) intermediate slopes. Avoid sudden starts and stops. Be extra careful when working on inclines.



Pick the levellest possible route when transporting across fields.

SAFETY PRECAUTIONS

GRAIN AUGER WAGON



Allow for unit length when making turns.



Never transport Row Crop wagon or load grain into Row Crop wagon with outer wheels removed.



Always make certain there is adequate overhead clearance before folding or unfolding the unloading auger.



Always fold unloading auger to down position before transporting wagon.



Windows give only a limited view of what is behind the wagon. Always check carefully, including blind spots, before backing or turning the wagon.



Limit towing speed to 15 MPH when empty and 10 MPH when loaded.



Always drive at a safe speed relative to local conditions and ensure your speed is low enough for an emergency stop to be safe and secure. Keep speed to a minimum.



Reduce speed prior to turns to avoid the risk of overturning.



Avoid sudden uphill turns on steep slopes.



Always keep the tractor in gear to provide engine braking when going downhill. Do not coast.



Be a safe and courteous driver. Always yield to oncoming traffic in all situations, including narrow bridges, intersections, etc.



Always disengage PTO, shut off tractor engine and remove the ignition key before:

1. Leaving tractor seat.
2. Lubricating the auger wagon.
3. Cleaning out debris.



Store the auger wagon in an area away from human activity. **DO NOT** permit children to play in or around the stored unit.



Make sure the parked machine is on a hard, level surface. Wheel chocks may be needed to prevent unit from rolling.



Good maintenance is your responsibility. Poor maintenance is an invitation to trouble.



Grease telescoping PTO driveline shaft daily to minimize thrust forces.



Before applying pressure to the hydraulic system, make sure all connections are tight and that hoses and fittings have not been damaged. Hydraulic fluid escaping under pressure can have sufficient force to penetrate skin, causing injury or infection.



Rim and tire servicing can be dangerous. Explosive separation of tire and rim parts can cause serious injury or death. The multipiece rim used on some Sof-Trak wagons require that specific procedures and safety instructions be followed in mounting and demounting of the tires. Do not attempt to mount a tire unless you have the proper equipment and experience to perform the job. This should only be done by persons properly trained and equipped to do the job. Always maintain the correct tire pressure. Do not inflate the tires above the recommended pressure. When inflating tires, use a clip-on air chuck and extension hose long enough to allow you to stand to one side and **NOT** in front of or over the tire assembly. Use a safety cage to enclose the tire and rim assembly when inflating. Inspect tires and wheels daily. Do not operate with low pressure, cuts, bubbles, damaged rims or missing lug bolts and nuts.



This machine has been designed and built with your safety in mind. Do not make any alterations or changes to this machine. Any alteration to the design or construction may create safety hazards.



Your KINZE® auger wagon is intended for off road use only. However, if grain is being transported from field to farm on rural roads, make sure all load limits on roads and bridges are observed.

SAFETY PRECAUTIONS

GRAIN AUGER WAGON DRIVELINE

The area between the tractor and the PTO-driven implement is a DANGER zone. This can be one of the most dangerous places on your farm for you, any member of your family and employees.

Almost every driveline accident happens during the day and near the barnyard. Certain operating conditions are particularly dangerous:

- If your equipment is missing guards or shields.
- If you are not paying attention.
- If children are playing near where you are working.
- If you are operating a stationary piece of equipment.
- If you are wearing loose-fitting clothes.
- If you are tired or in a hurry to get finished.

Most driveline accidents happen when drivelines are operated without shields/guards or they are improperly maintained.

Heed all safety warnings in this manual and on the safety warning signs. Review these warnings frequently!



Exercise extreme caution when operating machinery.



Never permit any persons other than the operator to ride on the tractor and never permit persons to ride on or in the wagon at any time.



At all times keep children off of and out of auger wagons. You have an obligation to keep children away. There is NO reason for any child to be near operating equipment.



If the elderly are assisting with farmwork, their physical limitations need to be recognized and accommodated.



Always keep hands, feet and clothing away from moving parts.



Never step across any driveline.



Do not use the tractor drawbar, PTO or wagon tongue as a step.



Do not attach drivelines with bolts or pins which are longer than recommended. They can not only catch loose clothing, boot-laces or a pant cuff, but while spinning rapidly, they can cause serious bodily injury.



Always disengage PTO, shut off tractor engine and remove ignition key before:
1. Leaving tractor seat.
2. Lubricating the auger wagon.
3. Cleaning out debris.



Never operate the auger wagon without PTO driveline guards, tractor master shield and implement shields in place. Make certain PTO driveline guards turn freely and are properly attached.



Do not remove the PTO driveline guard or expose guarded parts to the driveline by cutting or enlarging the grease access holes.



Never operate the wagon with PTO driveline guards in a damaged condition.



Always make certain U-joint yokes are securely locked on tractor and implement shaft before operating wagon.



Grease telescoping PTO driveline shaft daily to minimize thrust forces.



This machine has been designed and built with your safety in mind. Do not make any alterations or changes to this machine. Any alteration to the design or construction may create safety hazards.



Never exceed 1000 RPM or operate the PTO at full RPM with the auger empty.

SAFETY PRECAUTIONS

LUBRICATION

The following pages show the location of all lubrication points. Proper lubrication of all moving parts will help ensure efficient operation of your KINZE® Auger Wagon and prolong the life of friction producing parts. Those parts equipped with grease fittings should be lubricated at the frequency indicated with an SAE multipurpose type grease. Be sure to clean the fitting thoroughly before using grease gun. The frequency of lubrication recommended is based on normal operating conditions. Severe or unusual conditions may require more frequent attention.

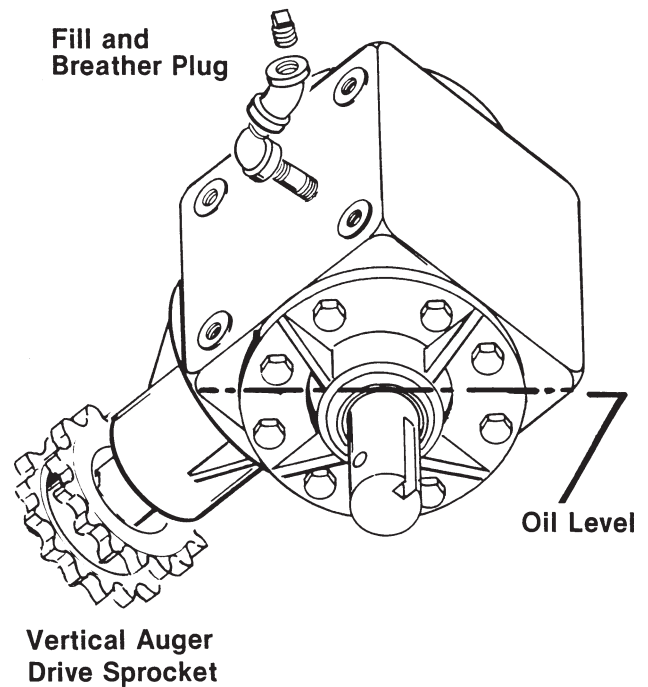
DRIVE CHAINS

The auger drive chains should be lubricated daily with a quality engine oil or equivalent SAE 30 weight oil. A good quality spray lubricant may also be used for periodic chain lubrication. Extreme operating conditions such as dirt, temperature or speed may require more frequent lubrication. If any of the chains become stiff, they should be removed, soaked and washed in solvent to loosen and remove dirt from the joints. Then soak the chain in oil so the lubricant can penetrate between the rollers and bushings.

WHEEL BEARINGS

Wheel bearings should be repacked with clean heavy-duty axle grease approximately once a year or at the beginning of each season. Follow the procedure outlined for wheel bearing replacement with the exception that bearings and bearing cups are reused when the wheel bearings are being.

Gearbox



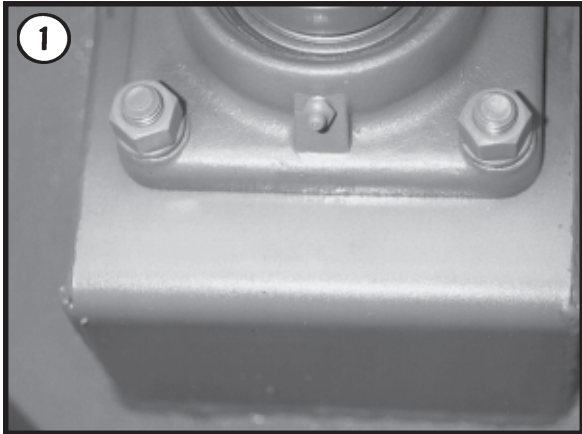
Oil level should never exceed more than half way up on the cross shaft. Fill as needed with SAE 90 oil.

LUBRICATION

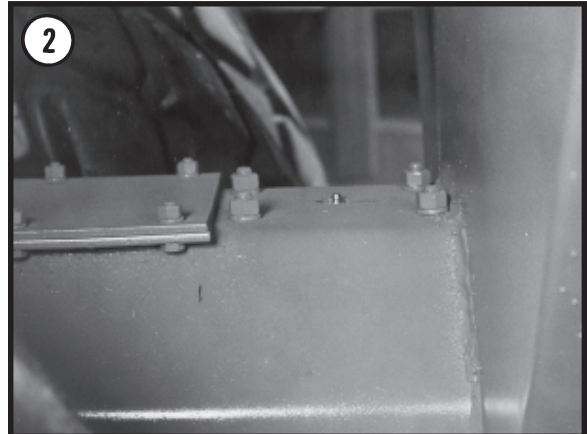
| LUBRICATION CHART | | | |
|-------------------|--|--------------|-----------|
| Ref. No. | Description | No. of Zerks | Frequency |
| 1. | Rear Horizontal Auger Bearing | 1 | Weekly |
| 2. | Horizontal Auger Center Bearing, 1200(Shown) | 2 | Weekly |
| | Horizontal Auger Center Bearing, 600HD/800 | 1 | Weekly |
| 3. | Lower Vertical Auger Bearing | 2 | Weekly |
| | Front Horizontal Auger Bearing | 2 | Weekly |
| | Drive Chains | 1 | Daily |
| 4. | Vertical Auger Center Bearing | 1 | Weekly |
| 5. | Upper Vertical Auger Bearing | 1 | Weekly |
| 6. | Auger Fold Linkage and Hinge | 5 | Daily |
| 7. | Axle Assembly Pivot (1200 Only) | 2 Per Side | Daily |
| 8. | PTO Assembly | 3 | Daily |

CAUTION: Extreme operating conditions such as dirt, temperature or speed may require more frequent lubrication.

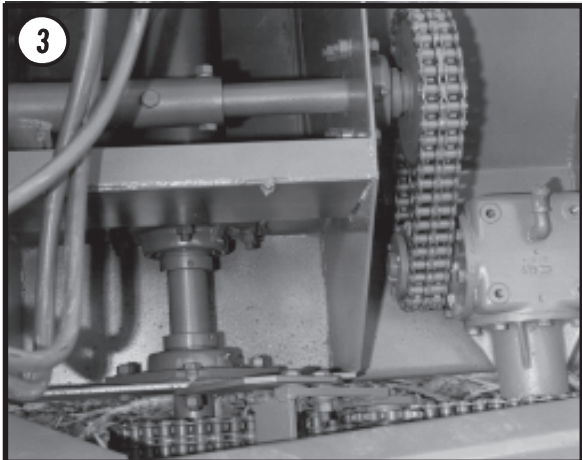
00131-5



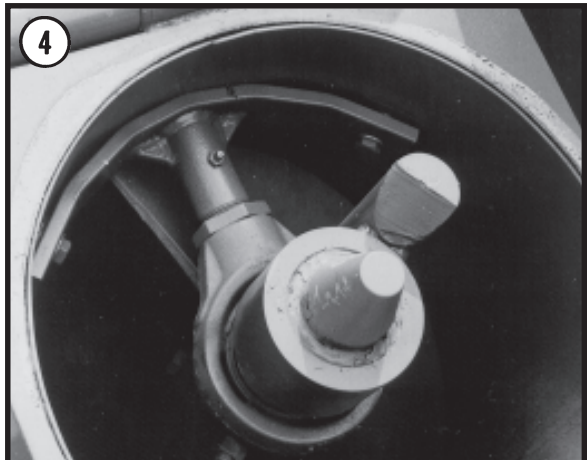
00131-6



00131-7

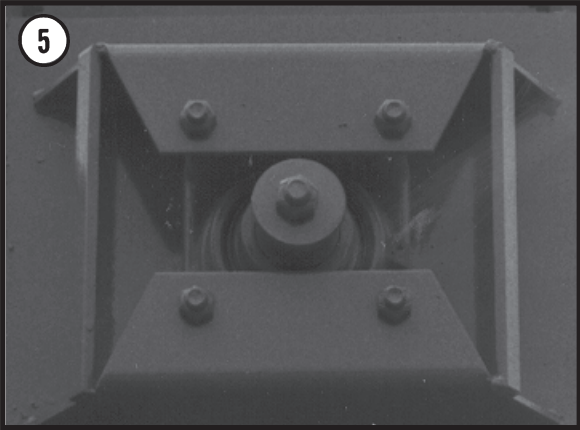


00131-8

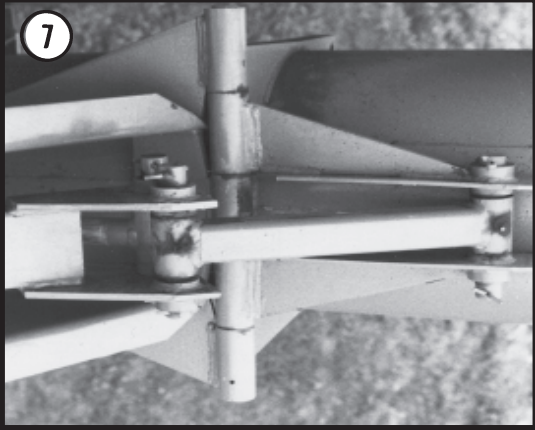


LUBRICATION

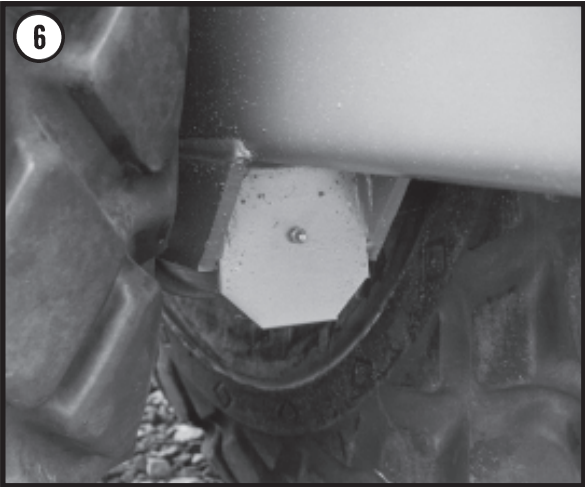
00131-9



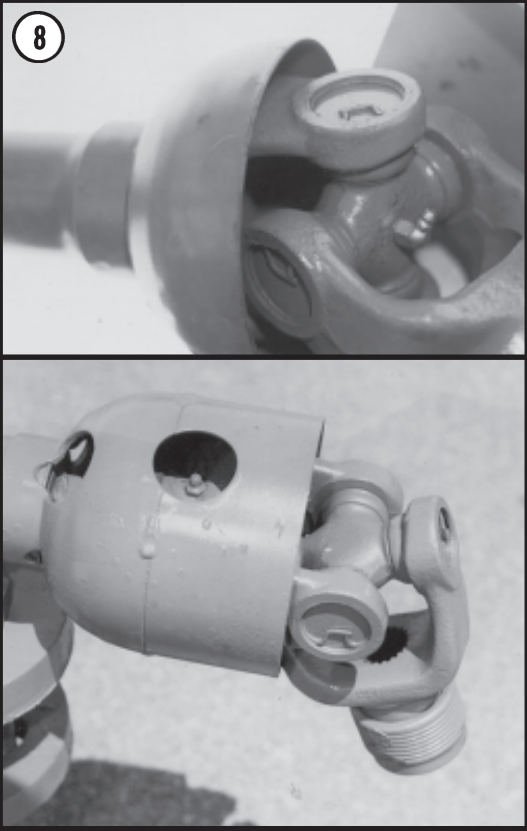
00131-11



00131-10



00131-12/00131-12a



LUBRICATION

OPERATION

The following information is general in nature and was written to aid the operator in preparing the tractor and auger wagon for use and providing general operating procedures.

INITIAL PREPARATION OF THE WAGON

Lubricate the auger wagon per the lubrication information in this manual prior to initial operation and at prescribed intervals thereafter. Most importantly, make sure all tires have been properly inflated prior to each use. See tire pressure in Maintenance Section. Check all drive chains for proper tension and lubrication.

TRACTOR PREPARATION AND HOOKUP

1. Slide tractor drawbar in as far as it will go. Then adjust the drawbar to a stationary position so that the hitch pin hole is directly below the center line of the PTO shaft.
2. Connect auger wagon to tractor hitch with at least a 1" x 6" Grade 5 cap screw, lock washer and hex nut or suitable hitch pin with locking hair pin.
3. Attach wagon PTO connecting yoke to tractor PTO shaft. Be sure spring loaded yoke pin engages groove in tractor PTO shaft. Check that slip tube grease fitting is visible through hole of outer tube.

CAUTION: Ensure that hitch height is sufficient to prevent bends in PTO U-joint angles.

4. Attach quick disconnect fitting to ends of hydraulic hoses to match tractor hydraulic ports. Connect hydraulic hoses to tractor ports in a sequence which is both familiar and comfortable to the operator.

CAUTION: When connecting cylinder hoses, make sure hoses do not cross over or contact PTO shaft.

OPERATION

WARNING: Before applying pressure to the hydraulic system, make sure all connections are tight and that hoses and fittings have not been damaged. Hydraulic fluid escaping under pressure can have sufficient force to penetrate skin, causing injury or infection.

IMPORTANT: Always wipe hose ends to remove any dirt before connecting couplers to tractor ports.

5. Raise jack to a height that will prevent damage even in uneven field conditions.

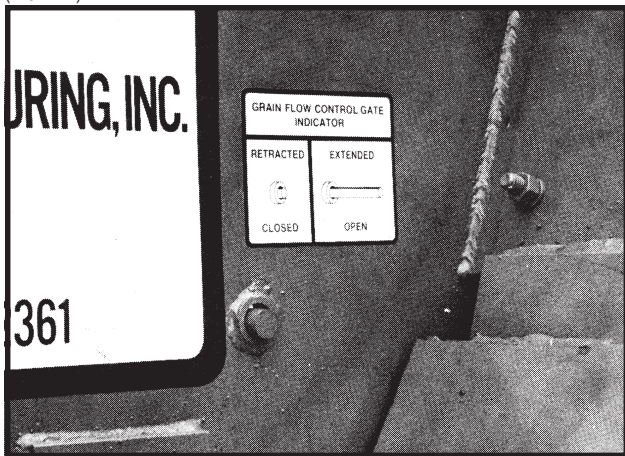
WARNING: Your KINZE auger wagon was designed for off road use. If it is used for transporting grain over rural roads, observe weight limits on all roads and bridges.

UNLOADING

The unloading speed will vary with the moisture content of the grain and the PTO speed. The amount of opening on the grain flow control gate can also be used to adjust unloading speed.

1. With clutch disengaged and tractor idling engage PTO.
2. Open grain flow control gate. The amount of opening can be determined by the position of the control gate indicator on the front of the grain tank.

(WGN114)



3. Increase tractor RPM to the desired speed.

CAUTION: If the auger wagon is being unloaded on the move, disengage PTO before making any sharp turns.

4. As grain flow slows, reduce tractor RPM to idle.

CAUTION: Do not operate tractor PTO at full speed with the auger empty.

5. When grain flow stops, close the grain flow control gate.

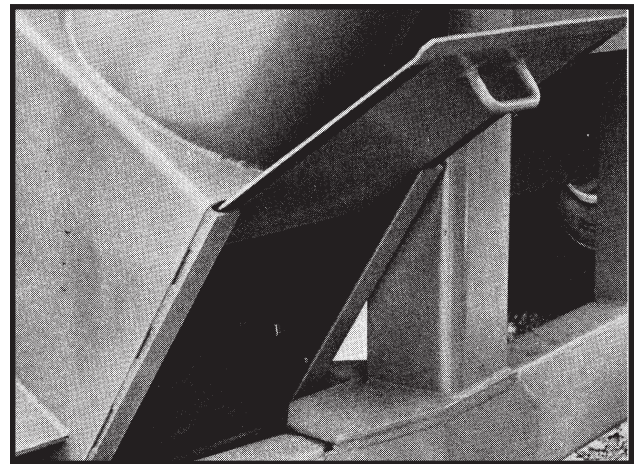
DUMP DOOR

All models are equipped with a dump door that not only provides cleaning access but allows for pit dumping.

Always make sure the PTO is disengaged prior to opening or closing the door. Grain flow may then be regulated with the grain flow control gate and the tractor PTO speed.

At the end of each season or extended use, the dump door should be removed and the auger chamber cleaned of all debris and accumulated grain to prevent rust and mold.

(WGN115)



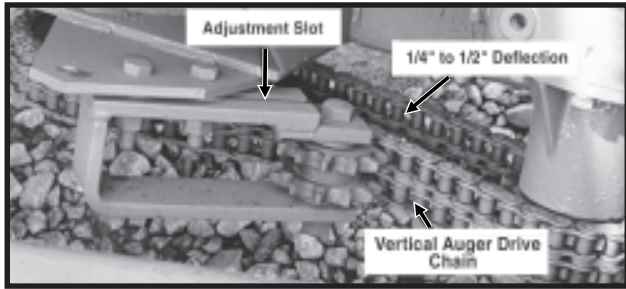
MAINTENANCE

AUGER DRIVE CHAINS

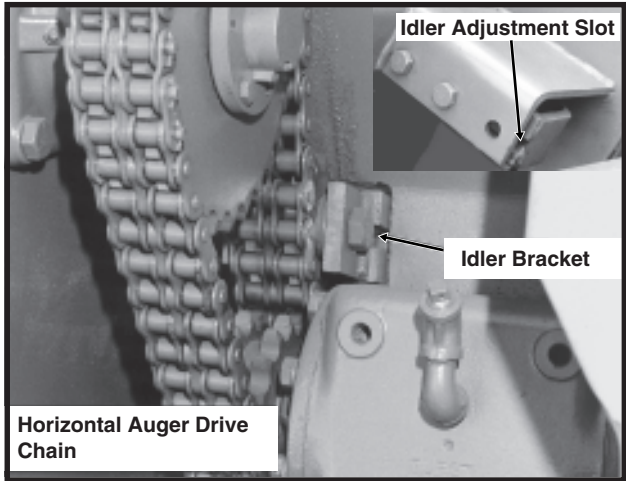
To prevent excessive wear on the auger drive chains and sprockets, the chains must be maintained and properly tensioned.

Adjust the slot mounted idler bracket to establish an deflection of 1/4" to 1/2" on the span opposite the idler.

00131-16



00131-15/00131-15a



WHEEL NUTS

The wheels are attached to the hubs with press fit bolts through the hub flanges and wheel nuts. Upon any removal and installation of the wheel clean the threads with a wire brush and oil lightly to retard corrosion. Tighten wheel nuts to 425 ft. lbs. torque and check nuts periodically to ensure tightness.

TIRE PRESSURE

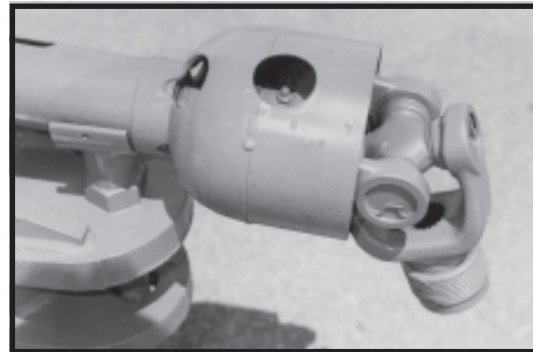
Tire pressure should be checked regularly and prior to each use of the wagon and maintained as follows:
24.5 x 32; 12 Ply-16 Ply 35 PSI
30.5 x 32; 12 Ply-16 Ply 35 PSI

SHEAR BOLT PROTECTION

To ensure drive line and gear box protection, all KINZE Auger Wagons are equipped with a shear bolt yoke in the tractor half of the PTO shaft.

Should the auger become obstructed, the yoke is designed to shear the connecting bolt before further damage can occur. Access holes in the PTO shield permit replacement of the shear bolt without removal of the guard. Always use an identical 5/16"-18 x 1 1/2" grade 5 bolt for replacement.

00131-12a

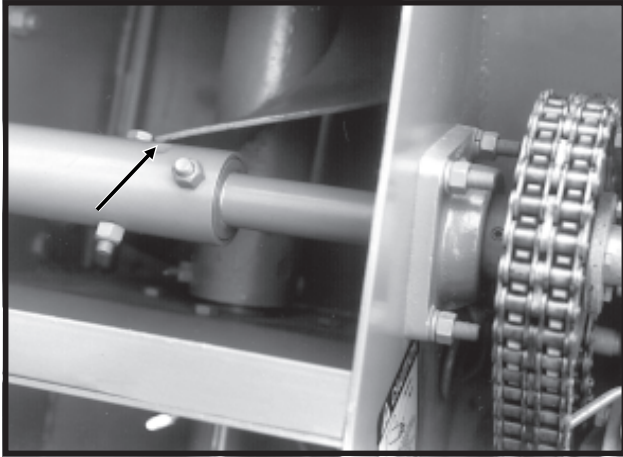


MAINTENANCE

AUGER TIMING

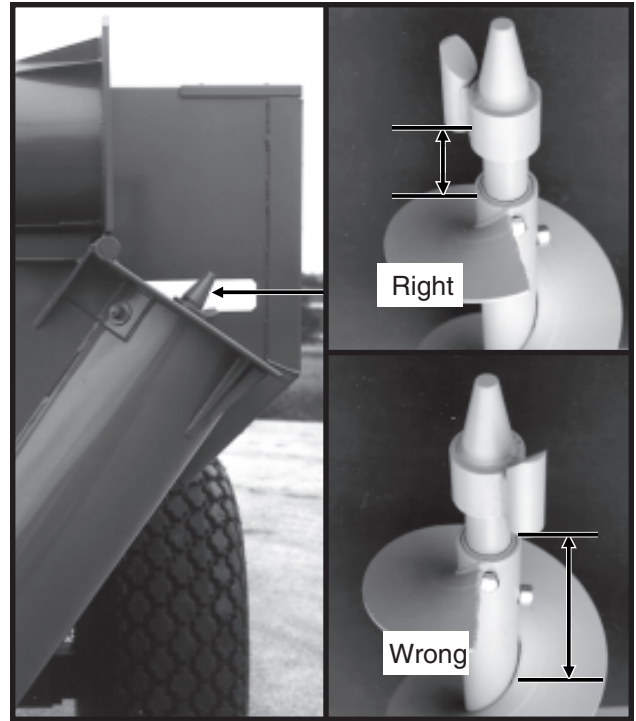
Any time chains have been removed, check by rotating horizontal and vertical augers by hand to be sure the bolts on the front of the horizontal auger do not strike lower vertical auger flighting.

(54813-6)



If vertical augers or bullet assembly have been removed for any reason, special care must be taken to reinstall bullet assembly in the proper position. It is possible to install the bullet assembly in two positions 180° apart. One position will put the auger assembly out of time and restrict the flow of grain between the top and bottom auger. The proper location is noted in the picture. This location places the drive pin where it is closest to the flighting on the auger when measuring down the drive pin to the flighting on the auger.

(58619-39/54813-41/54813-38)

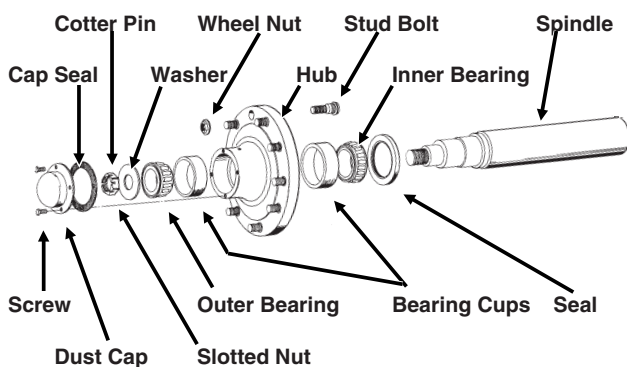


MAINTENANCE

WHEEL BEARING REPLACEMENT

1. Raise tire clear of ground and remove wheel.
2. Remove dust cap attachment hardware and remove cap from wheel hub.
3. Remove cotter pin, axle nut and 2" washer.
4. Slide hub from axle spindle, using a hub puller if necessary.
5. Remove bearings and cups from hub and discard. Thoroughly clean and dry wheel hub.
6. Press in new bearing cups with thickest edges facing in.
7. Pack bearing with heavy duty wheel bearing grease, thoroughly forcing grease between roller cone and bearing cage. Also fill the space between the bearing cups in the hub with grease.
8. Place inner bearing in hub and press in new grease seal with lip pointing towards bearing.
9. Clean axle spindle and install hub.
10. Install outer bearing, 2" washer and slotted hex nut. Tighten slotted hex nut while rotating the hub until there is some drag. This assures that all bearing surfaces are in contact. Back off slotted nut to nearest locking slot and install cotter pin. Check for endplay in bearings.
11. Fill dust cap half full of wheel bearing grease and install on hub with attachment bolts.
12. Install wheel and remove jack. Torque wheel nuts to 425 ft. lbs.

HTA002(WGN19)



PREPARATION FOR STORAGE

- Always store the machine in a dry sheltered area if possible.
- Remove all trash that may be wrapped on sprockets or shafts and remove dirt that can draw moisture.
- Remove dump door and clean out all accumulated grain and debris from auger chamber.
- Wash machine inside and out.
- Clean all drive chains and coat with a rust preventative spray or remove chains and submerge in oil.
- Lubricate machine at all lubrication points.
- If possible, remove weight from all tires, particularly if the unit is being stored outdoors.
- Repaint any areas where paint has been removed. This is particularly important in the inside of the grain tank. Rust in this area will shorten the life of the wagon as well as prevent grain from smoothly sliding to the bottom of the tank.
- Inspect the machine for parts that are in need of replacement and order during the "off" season.
- Coat exposed surface of all cylinder piston rods with grease or rust preventative spray.

MAINTENANCE

PARTS LIST INDEX

DRIVE COMPONENTS

| | |
|---|-----|
| Cylinders | P32 |
| Front Horizontal Auger And Drive | P14 |
| Gearbox | P11 |
| Grease Bank And Chain Oiler | P9 |
| Horizontal Center Bearing (800) | P16 |
| Horizontal Center Bearing (600HD/800) | P17 |
| Horizontal Center Bearing And Auger (1200) | P18 |
| PTO Assembly | P2 |
| Rear Horizontal Auger And Bearing (800/1200) | P19 |
| Rear Horizontal Auger And Bearing (600HD/800) | P20 |
| Tunnel Cover Linkage (1200) | P21 |
| Vertical Auger - Lower Section | P6 |
| Vertical Auger - Upper Section | P8 |
| Vertical Auger Drive | P12 |

MAIN FRAME

| | |
|---|-----|
| Axle Assembly (600HD/800) | P26 |
| Grain Flow Control Gate (600HD/800) | P23 |
| Grain Flow Control Gate (1200) | P22 |
| Grain Box (600HD/800) | P24 |
| Grain Box (1200) | P25 |
| Hitch (1200) | P27 |
| Jack Assembly | P30 |
| Tire And Hub Assembly | P28 |

ELECTRICAL

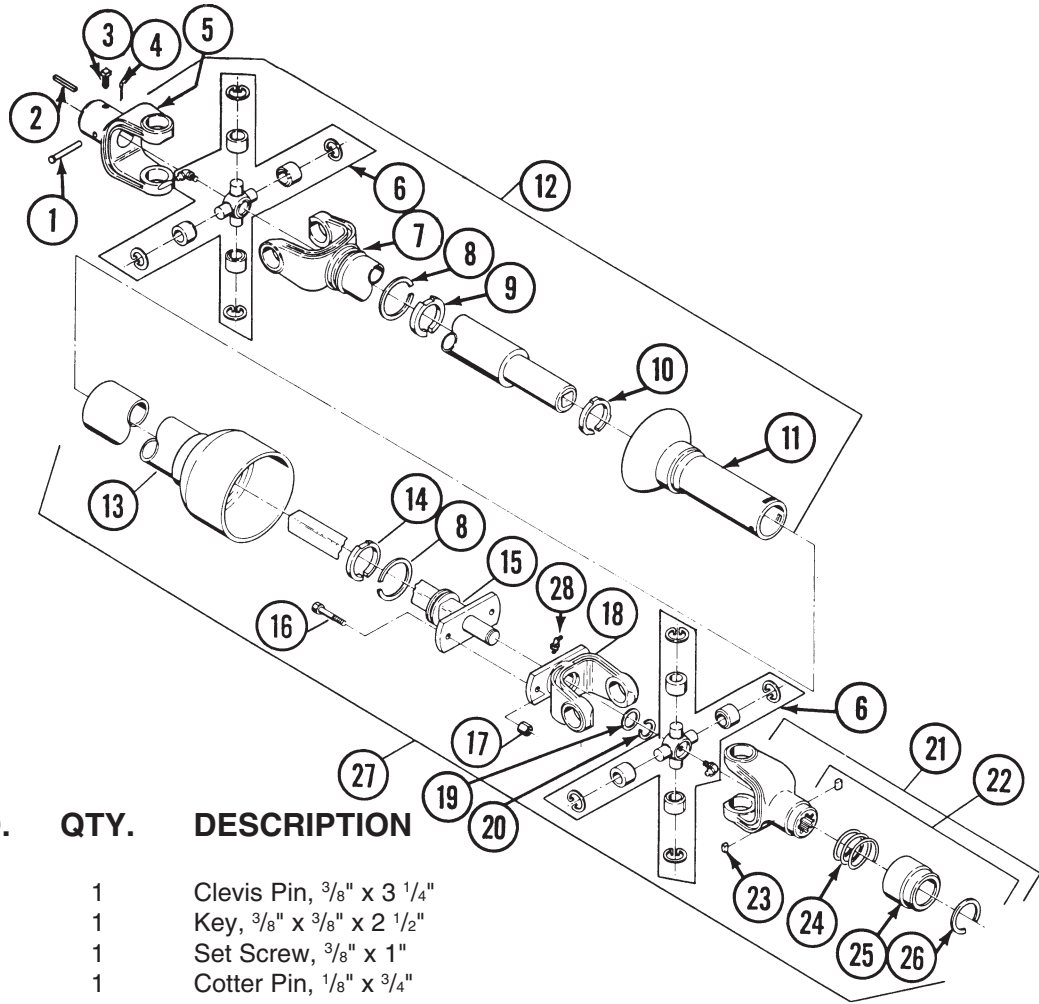
| | |
|---|-----|
| Light Package | P10 |
| Decals, Reflectors And Tie Straps | P38 |
| Numerical Index | a |

PTO ASSEMBLY

1 3/8"-21 SPLINED YOKE

STYLE A

(WGN112)



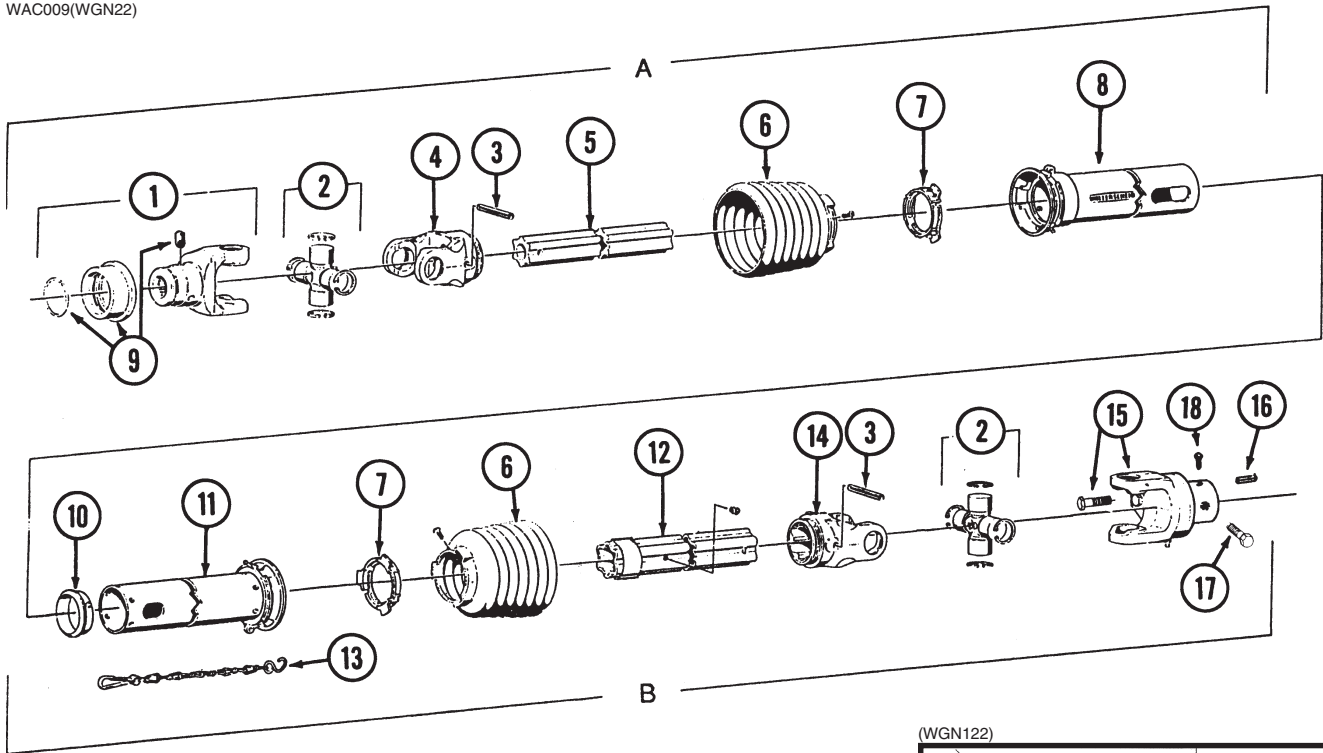
| ITEM | PART NO. | QTY. | DESCRIPTION |
|------|----------|------|---|
| 1. | G10563 | 1 | Clevis Pin, 3/8" x 3 1/4" |
| 2. | GD0144 | 1 | Key, 3/8" x 3/8" x 2 1/2" |
| 3. | G10700 | 1 | Set Screw, 3/8" x 1" |
| 4. | G10456 | 1 | Cotter Pin, 1/8" x 3/4" |
| 5. | GR0239 | 1 | End Yoke |
| 6. | GR0241 | 2 | U-Joint Repair Kit |
| 7. | | 1 | Yoke And Tube (Sub. GR0240) |
| 8. | GR0243 | 2 | Retainer And Ring |
| 9. | GR0244 | 1 | Bearing, Nylon |
| 10. | GR0246 | 1 | Centralizer, Nylon |
| 11. | GR0238 | 1 | Inner Guard - Machine Half |
| 12. | GR0240 | - | PTO Half - Machine |
| 13. | GR0237 | 1 | Outer Guard - Tractor Half |
| 14. | | 1 | Bearing, Nylon (Sub. GR1237 Nylon Kit) |
| 15. | GR0248 | 1 | Shaft With Shear Flange |
| 16. | G10133 | 2 | Hex Head Cap Screw, 5/16"-18 x 1 1/2" |
| 17. | G10109 | - | Lock Nut, 5/16"-18 |
| 18. | GR0249 | 1 | Shear Yoke With Lube Kit |
| 19. | G10134 | 1 | Washer, 1 1/8" I.D. x 1 5/8" O.D. x 14 GA. |
| 20. | GR0252 | 1 | Retaining Ring |
| 21. | GR0253 | 1 | Lock Yoke Assembly |
| 22. | GR0254 | - | Safety Slide Lock Repair Kit |
| 23. | GR0285 | 2 | Pawl |
| 24. | GR0286 | 1 | Spring |
| 25. | GR0287 | 1 | Collar |
| 26. | GR0288 | 1 | Retaining Ring |
| 27. | GR0245 | 1 | PTO Half - Tractor |
| 28. | GR0251 | - | Instamatic Lube Kit |

NOTE: Refer to Style B PTO Assembly for 1979 wagons which have a shorter PTO assembly. 1979 wagons have a serial no. such as (79)248.

PTO ASSEMBLY 1 3/8"-21 SPLINED YOKE

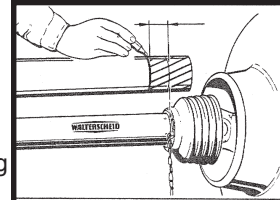
STYLE B

WAC009(WGN22)

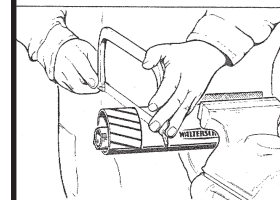


| ITEM | PART NO. | QTY. | DESCRIPTION |
|------|----------|------|---|
| 1. | GR1209 | 1 | Yoke, Includes Item 9 |
| 2. | GR1210 | 2 | Cross And Bearing Kit W/Grease Fitting |
| | GR1300 | - | Grease Fitting, 67.5° |
| 3. | GR1211 | 2 | Spring Pin |
| 4. | GR1212 | 1 | Inboard Yoke |
| 5. | GR1213 | 1 | Inner Profile |
| 6. | GR1217 | 2 | Guard Cone W/Screw |
| 7. | GR1220 | 2 | Bearing Ring |
| 8. | GR1218 | 1 | Outer Guard Tube |
| 9. | GR1245 | - | Quick Disconnect Kit |
| 10. | GR1222 | 1 | Support Bearing |
| 11. | GR1219 | 1 | Inner Guard Tube |
| 12. | GR1214 | 1 | Profile And Sleeve W/Grease Fitting |
| | GR1430 | - | Grease Fitting, Drive-In |
| 13. | GR1221 | 1 | Safety Chain |
| 14. | GR1215 | 1 | Inboard Yoke |
| 15. | GR1216 | 1 | Clutch W/Shear Bolt, Nut And Grease Fitting |
| | G10049 | - | Hex Head Cap Screw, 3/8"-16 x 2 1/2", Grade 5 |
| | G10108 | - | Lock Nut, 3/8"-16 |
| | GR1438 | - | Special Grease Fitting |
| 16. | GD0144 | 1 | Key, 3/8" x 3/8" x 2 1/2" |
| 17. | G10326 | 1 | Hex Head Cap Screw, 3/8"-16 x 3 3/4" |
| | G10108 | 1 | Lock Nut, 3/8"-16 |
| 18. | G10700 | 1 | Set Screw, 3/8" x 1" |
| A. | GR1225 | - | PTO Half - Tractor (Items 1-9) |
| B. | GR1224 | - | PTO Half - Machine (Items 2, 3, 6, 7 And 10-15) |

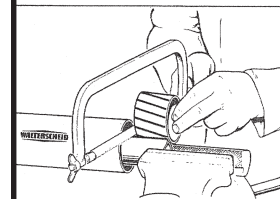
(WGN122)



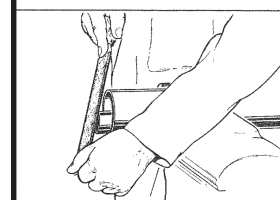
To adjust the length, hold the half-shafts next to each other in the shortest working position and mark them.



Shorten inner and outer guard tubes equally.



Shorten inner and outer sliding profiles by the same length as the guard tubes.



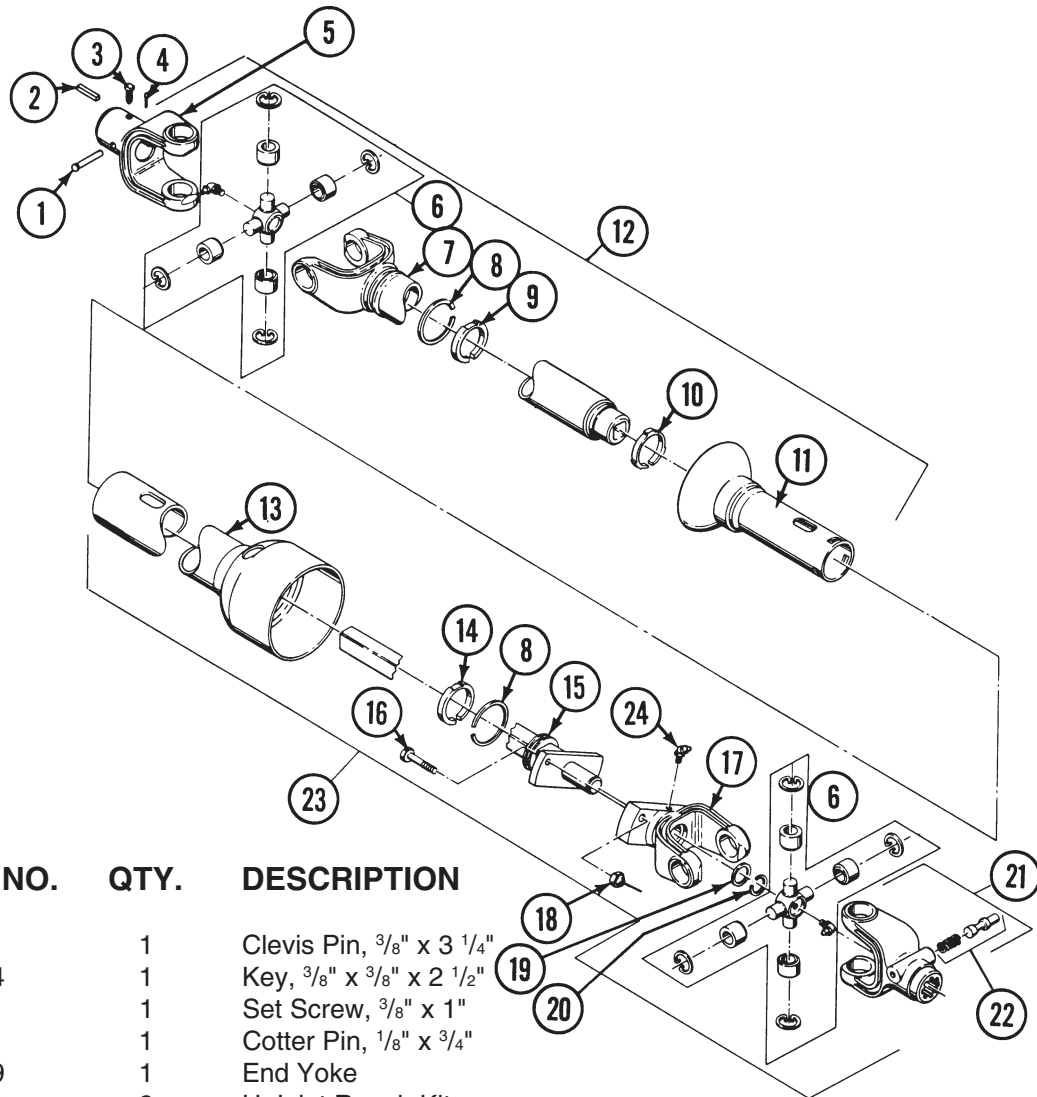
Round off all sharp edges and remove burrs. Grease sliding profiles. No other changes may be made to the PTO drive shaft and guard.

NOTE: This PTO may be cut as per above instruction to adapt to 1979 wagons which have a shorter PTO assembly. 1979 wagons have a serial no. such as (79)248.

PTO ASSEMBLY HEAVY DUTY 1 3/4"-20 SPLINED YOKE

STYLE A

(WGN113)



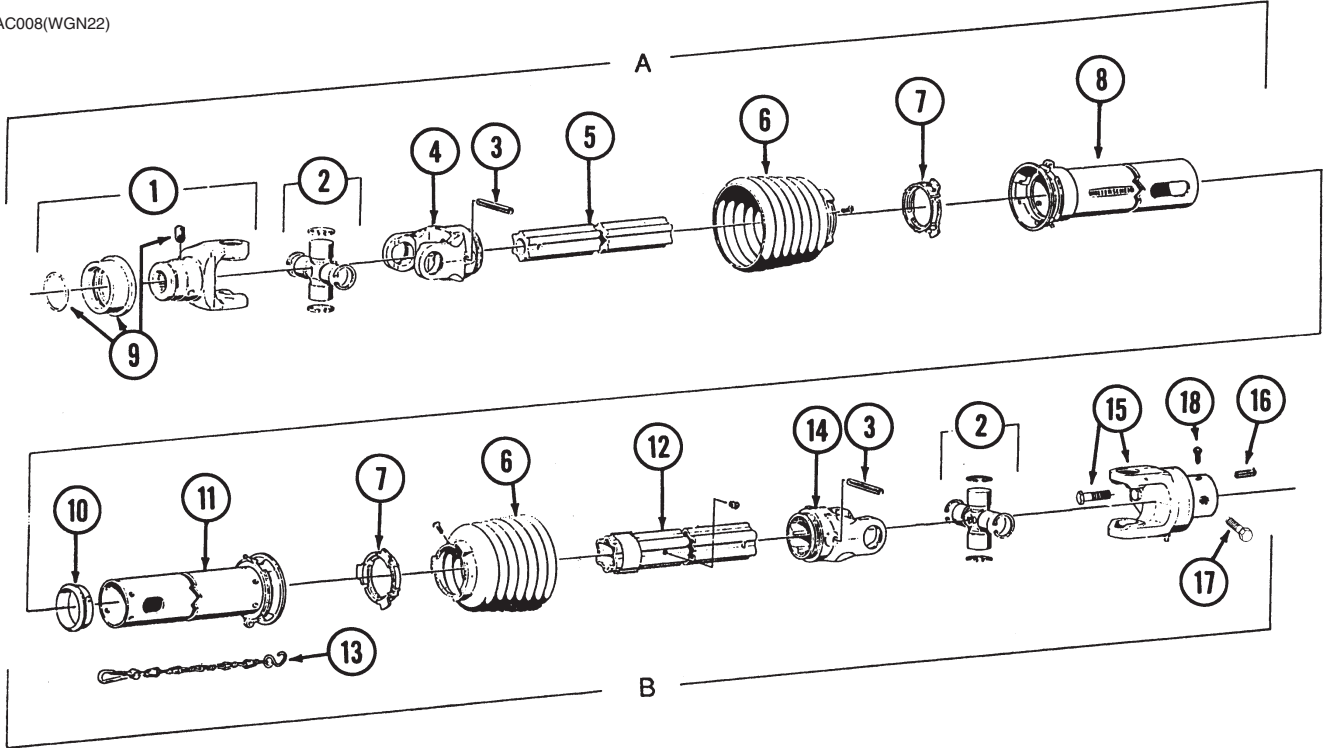
| ITEM | PART NO. | QTY. | DESCRIPTION |
|------|----------|------|---------------------------------------|
| 1. | G10563 | 1 | Clevis Pin, 3/8" x 3 1/4" |
| 2. | GD0144 | 1 | Key, 3/8" x 3/8" x 2 1/2" |
| 3. | G10700 | 1 | Set Screw, 3/8" x 1" |
| 4. | G10456 | 1 | Cotter Pin, 1/8" x 3/4" |
| 5. | GR0239 | 1 | End Yoke |
| 6. | GR0241 | 2 | U-Joint Repair Kit |
| 7. | | 1 | Yoke And Tube (Sub. GR1232) |
| 8. | GR0243 | 2 | Retianer Ring |
| 9. | GR0244 | 1 | Bearing, Nylon |
| 10. | GR0246 | 1 | Centralizer, Nylon |
| 11. | GR0238 | 1 | Inner Guard - Machine Half |
| 12. | GR0240 | - | PTO Half - Machine |
| 13. | GR0237 | 1 | Outer Guard - Tractor Half |
| 14. | | 1 | Bushing, Nylon (Sub. GR1237) |
| 15. | GR0248 | 1 | Shaft With Shear Flange |
| 16. | G10133 | 1 | Hex Head Cap Screw, 5/16"-18 x 1 1/2" |
| 17. | GR0249 | 2 | Shear Yoke With Lube Kit |
| 18. | G10109 | - | Lock Nut, 5/16"-18 |
| 19. | G10134 | 1 | Washer, 1 1/8" I.D. x 1 5/8" O.D. |
| 20. | GR0252 | 1 | Retaining Ring |
| 21. | GR0289 | 1 | Lock Yoke Assembly |
| 22. | GR0290 | 1 | "Saf-T-Pin" And Spring Kit |
| 23. | GR1232 | - | PTO Half - Tractor |
| 24. | GR0251 | 1 | Instamatic Lube Kit |

NOTE: Refer to Style B PTO Assembly for 1979 wagons which have a shorter PTO assembly. 1979 wagons have a serial no. such as (79)248.

PTO ASSEMBLY HEAVY DUTY 1 3/4"-20 SPLINED YOKE

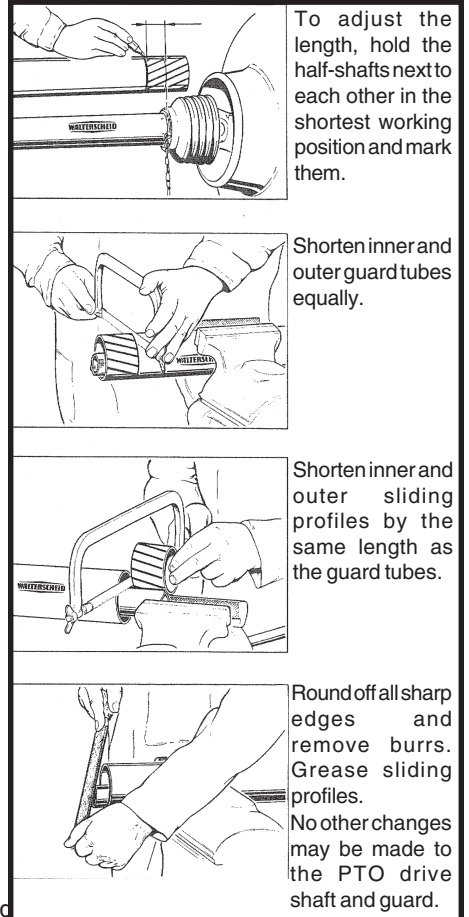
STYLE B

WAC008(WGN22)



| ITEM | PART NO. | QTY. | DESCRIPTION |
|------|----------|------|---|
| 1. | GR1223 | 1 | Yoke, Includes Item 9 |
| 2. | GR1210 | 2 | Cross And Bearing Kit W/Grease Fitting |
| | GR1300 | - | Grease Fitting, 67.5° |
| 3. | GR1211 | 2 | Spring Pin |
| 4. | GR1212 | 1 | Inboard Yoke |
| 5. | GR1213 | 1 | Inner Profile |
| 6. | GR1217 | 2 | Guard Cone W/Screw |
| 7. | GR1220 | 2 | Bearing Ring |
| 8. | GR1218 | 1 | Outer Guard Tube |
| 9. | GR1246 | - | Quick Disconnect Kit |
| 10. | GR1222 | 1 | Support Bearing |
| 11. | GR1219 | 1 | Inner Guard Tube |
| 12. | GR1214 | 1 | Profile And Sleeve W/Grease Fitting |
| | GR1430 | - | Grease Fitting, Drive-In |
| 13. | GR1221 | 1 | Safety Chain |
| 14. | GR1215 | 1 | Inboard Yoke |
| 15. | GR1216 | 1 | Clutch W/Shear Bolt, Nut And Grease Fitting |
| | G10049 | - | Hex Head Cap Screw, 3/8"-16 x 2 1/2", Grade 5 |
| | G10108 | - | Lock Nut, 3/8"-16 |
| | GR1438 | - | Special Grease Fitting |
| 16. | GD0144 | 1 | Key, 3/8" x 3/8" x 2 1/2" |
| 17. | G10326 | 1 | Hex Head Cap Screw, 3/8"-16 x 3 3/4" |
| | G10108 | 1 | Lock Nut, 3/8"-16 |
| 18. | G10700 | 1 | Set Screw, 3/8" x 1" |
| A. | GR1226 | - | PTO Half - Tractor (Items 1-9) |
| B. | GR1224 | - | PTO Half - Machine (Items 2, 3, 6, 7 And 10-15) |

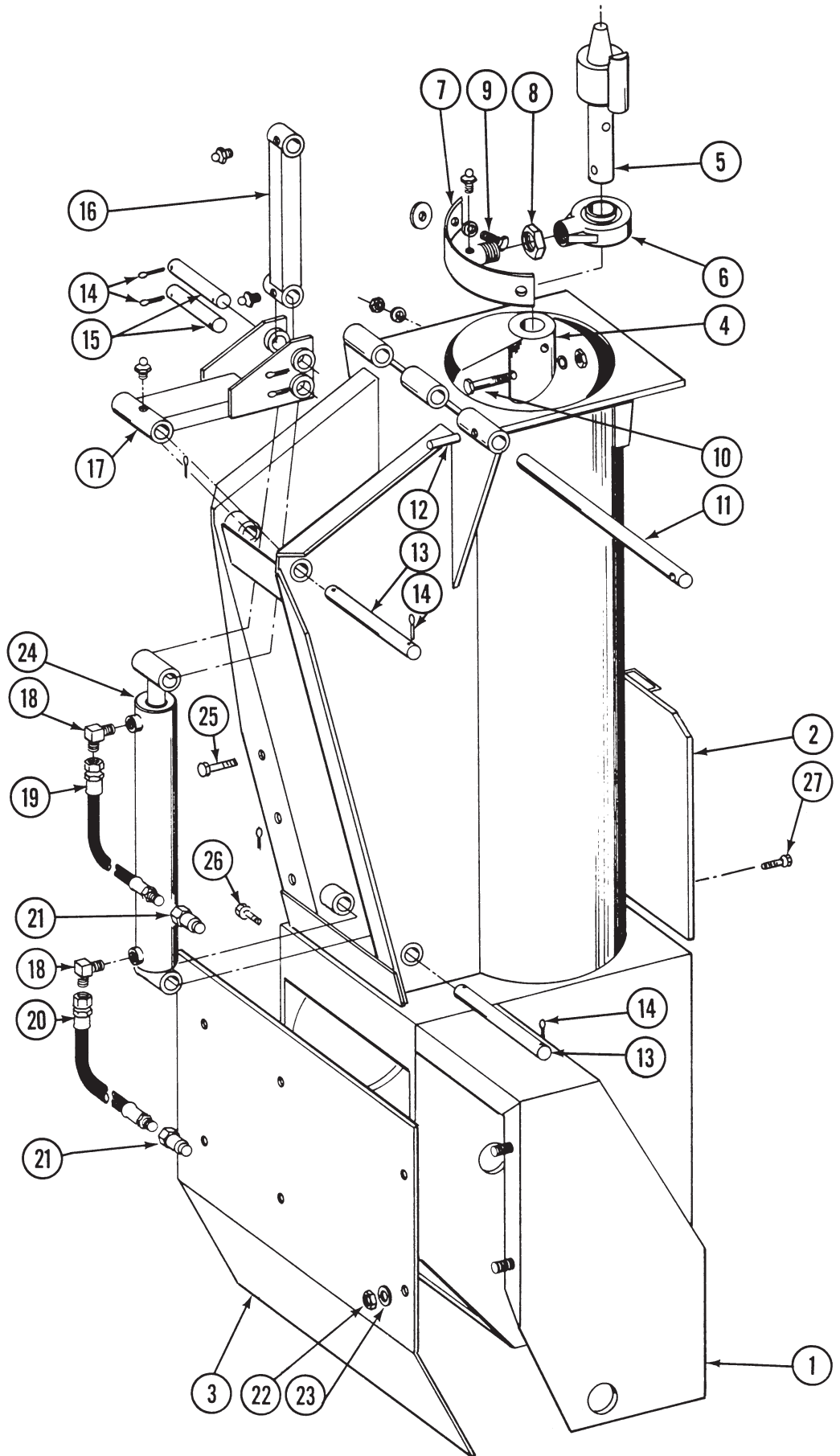
(WGN122)



NOTE: This PTO may be cut as per above instruction to adapt to 1979 wagons which have a shorter PTO assembly. 1979 wagons have a serial no. such as (79)248.

VERTICAL AUGER - LOWER SECTION

(WGN91)



VERTICAL AUGER - LOWER SECTION

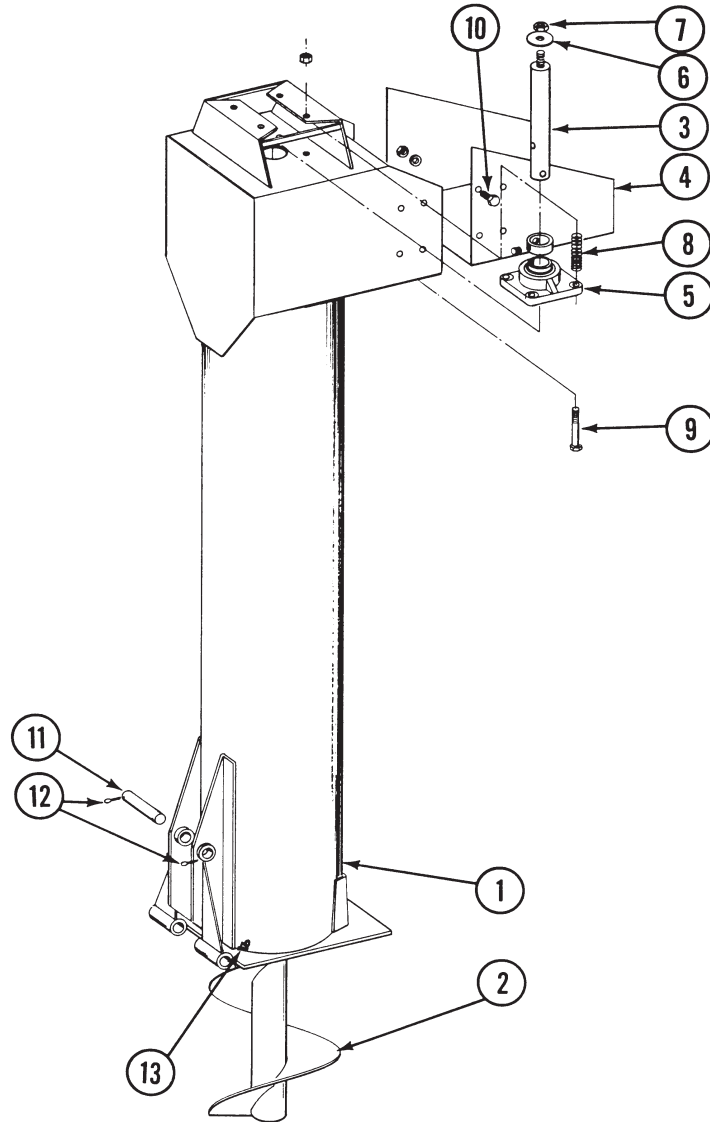
| ITEM | PART NO. | QTY. | DESCRIPTION |
|------|-------------|------|--------------------------------------|
| 1. | ** | 1 | Housing, Lower Auger |
| 2. | GA0422 | 1 | Door, Dump |
| 3. | GD0275 | 1 | Cover, 600HD/800 |
| | GD1555 | 1 | Cover, 1200 |
| 4. | GA4539 | 1 | Auger, 16" x 5' 6", R.H. |
| 5. | GA0423 | 1 | Bullet Assembly |
| 6. | GA0452 | 1 | Hanger Bearing, 2 7/16" |
| 7. | GA0511 | 1 | Mount W/Grease Fitting |
| | G10641 | - | Grease Fitting, 1/8" NPT |
| 8. | G10116 | 1 | Lock Nut, 1 1/4" NPT |
| 9. | G10053 | 2 | Hex Head Cap Screw, 1/2"-13 x 2 1/2" |
| | G10216 | 2 | Washer, 1/2" USS |
| | G10218 | 2 | Washer, 1/4" USS |
| | G10228 | 2 | Lock Washer, 1/2" |
| | G10102 | 2 | Hex Nut, 1/2"-13 |
| 10. | G10011 | 2 | Hex Head Cap Screw, 5/8"-11 x 5 1/2" |
| | G10107 | 2 | Lock Nut, 5/8"-11 |
| 11. | GD4012 | 1 | Shaft, 1 1/4" x 22 3/4" |
| 12. | G10610 | 1 | Roll Pin, 3/8" x 2" |
| 13. | GD4014 | 2 | Pin, 1 1/4" x 12" |
| 14. | G10460 | 4 | Cotter Pin, 1/4" x 2" |
| 15. | GD0653 | 2 | Pin, 1 1/4" x 7 3/4" |
| 16. | GA0426 | 1 | Linkage W/Grease Fittings |
| | G10641 | 3 | Grease Fitting, 1/8" NPT |
| 17. | GA0425 | 1 | Linkage W/Grease Fitting |
| | G10641 | - | Grease Fitting, 1/8" NPT |
| 18. | G2501-08-08 | 1 | Elbow, 90° |
| 19. | *A1015 | 1 | Hose Assembly, 3/8" x 138" |
| 20. | *A1014 | 1 | Hose Assembly, 3/8" x 120" |
| 21. | GD4086 | 2 | Hose Tip, Male, Pioneer |
| 22. | G10101 | 6 | Hex Nut, 3/8"-16" |
| 23. | G10229 | 6 | Lock Washer, 3/8" |
| 24. | A0234 | 1 | Cylinder, 3 1/2" x 20" (Sub. GA3667) |
| | A0698 | - | Cylinder, 3 1/2" x 20" (Sub. GA3667) |
| | A0701 | - | Cylinder, 3" x 20" (Sub. GA3667) |
| | A0702 | - | Cylinder, 3" x 20" (Sub. GA3667) |
| | A2282 | - | Cylinder, 2 1/2" x 20" (Sub. GA3667) |
| | A2283 | - | Cylinder, 2 1/2" x 20" (Sub. GA3667) |
| 25. | G10007 | - | Hex Head Cap Screw, 5/8"-11 x 1 1/2" |
| | G10230 | 2 | Lock Washer, 5/8" |
| | G10104 | - | Hex Nut, 5/8"-11" |
| 26. | G10025 | 1 | Hex Head Cap Screw, 3/4"-10 x 1 1/2" |
| | G10231 | 1 | Lock Washer, 3/4" |
| | G10105 | 1 | Hex Nut, 3/4"-10 |
| 27. | G10017 | 2 | Hex Head Cap Screw, 1/2"-13 x 1 1/2" |
| | G10228 | 2 | Lock Washer, 1/2" |
| | G10102 | 2 | Hex Nut, 1/2"-13 |
| A. | G1K201 | - | Auger Sleeve Kit |

* Hydraulic hose is not stocked by KINZE® Repair Parts, but can be made available on a special order basis. Call for quote.

**Replace with G1K278 Housing and G1K193 Adapter Kit.

VERTICAL AUGER - UPPER SECTION

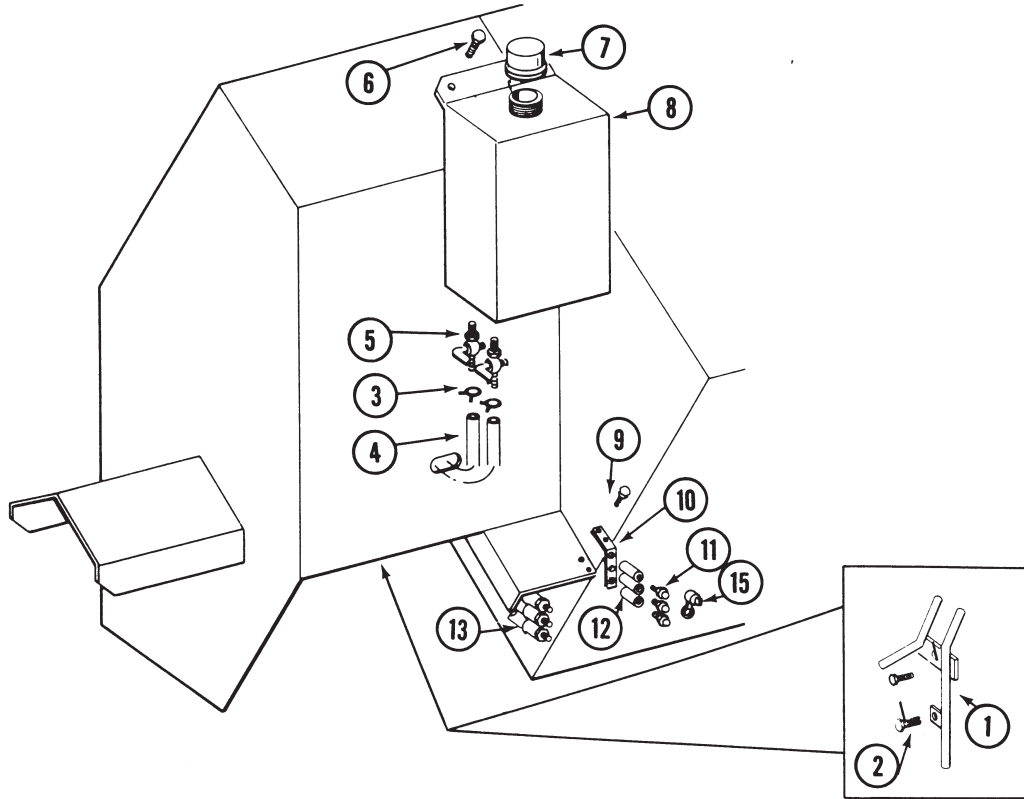
(WGN92)



| ITEM | PART NO. | QTY. | DESCRIPTION |
|------|----------|------|---|
| 1. | G1K277 | 1 | Housing, Upper Auger |
| 2. | GA4538 | 1 | Auger, 16" x 8", R.H. |
| 3. | GA1613 | 1 | Shaft |
| 4. | GD4056 | 1 | Extension |
| 5. | GA0448 | 1 | Bearing W/Lock Collar, Set Screw And Grease Fitting |
| | GR0264 | - | Lock Collar, 2 7/16" |
| | G10080 | - | Set Screw, 7/16" x 7/16" |
| | G10641 | - | Grease Fitting, 1/8" NPT |
| 6. | GD2456 | 1 | Washer |
| 7. | G10112 | 1 | Lock Nut, 3/4" - 10 |
| 8. | GD4072 | 4 | Spring |
| 9. | G10068 | 4 | Hex Head Cap Screw, 5/8"-11 x 6" |
| | G10107 | 2 | Lock Nut, 5/8"-11 |
| 10. | G10001 | 2 | Hex Head Cap Screw, 3/8"-16 x 1" |
| | G10229 | 2 | Lock Washer, 3/8" |
| | G10101 | 2 | Hex Nut, 3/8"-16 |
| 11. | GD0653 | 1 | Pin, 1 1/4" x 7 3/4" |
| 12. | G10460 | 1 | Cotter Pin, 1/4" x 2" |
| 13. | G10641 | - | Grease Fitting, 1/8" NPT |

GREASE BANK AND CHAIN OILER

(WGN93)

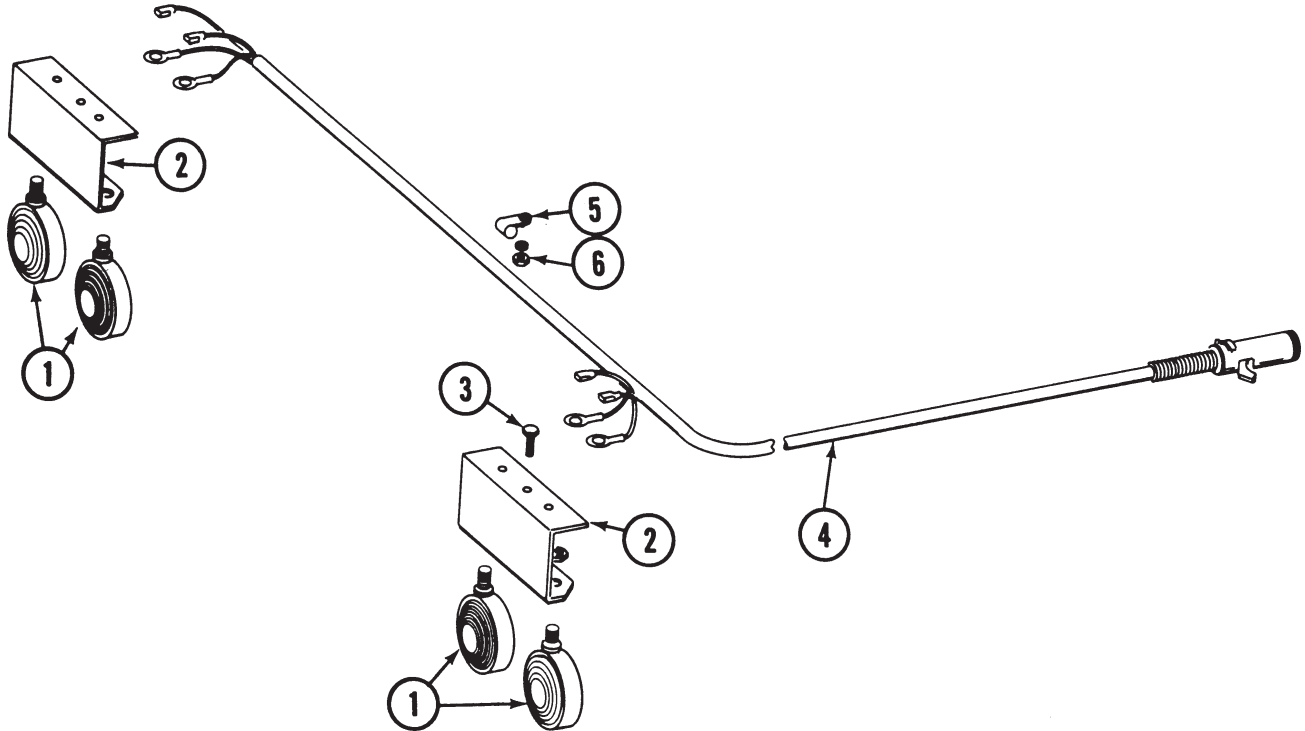


| ITEM | PART NO. | QTY. | DESCRIPTION |
|------|----------|------|-------------|
|------|----------|------|-------------|

| | | | |
|-----|-----------|---|--|
| 1. | GA4111 | 1 | Oil Line |
| 2. | G10443 | 2 | Hex Head Cap Screw, 5/8"-11 x 1" |
| 3. | G10426 | 2 | Hose Clamp |
| 4. | GD6279-01 | 2 | Hose, Clear Plastic, 14" |
| 5. | GA4110 | 2 | Hose Cock, Brass |
| 6. | G10019 | 1 | Hex Head Cap Screw, 5/16"-18 x 1" |
| | G10232 | - | Lock Washer, 5/16" |
| | G10219 | - | Washer, 5/16" USS |
| | G10106 | - | Hex Nut, 5/16"-18 |
| 7. | GA4112 | 1 | Cap, Vented, 1 1/2" |
| 8. | GA4108 | 1 | Tank |
| 9. | G10019 | 2 | Hex Head Cap Screw, 5/16"-18 x 1" |
| | G10232 | - | Lock Washer, 5/16" |
| | G10106 | - | Hex Nut, 5/16"-18 |
| 10. | GD6270 | 1 | Mount |
| 11. | G10641 | 3 | Grease Fitting, 1/8" NPT |
| 12. | G10125 | 3 | Pipe Coupling |
| 13. | GA0504 | 3 | Hose Assembly, 24" |
| 14. | G10423 | 1 | Elbow, 1/8" NPT (Not Shown) |
| 15. | G10434 | 1 | Cap Plug |
| 16. | G7100-111 | 1 | Decal, Oil (Not Shown) |
| 17. | G7100-110 | 1 | Decal, Grease (Not Shown) |
| A. | G1K166 | - | Chain Oiler Kit, Includes: (1)IS203, (2)10019, (2)10106, (2)10219, (2)10232, (4)10426, (2)10443, (1)7100-111, (1)7100-118, (1)A4108, (2)A4110, (1)A4111, (1)A4112, (2)D6279-01 |
| B. | G1K167 | - | Lube Kit, Includes: (1)IS202, (2)10019, (2)10106, (3)10125, (2)10232, (3)10423, (3)10434, (3)10641, (1)7100-110, (3)A0504, (1)D6270 |

LIGHT PACKAGE

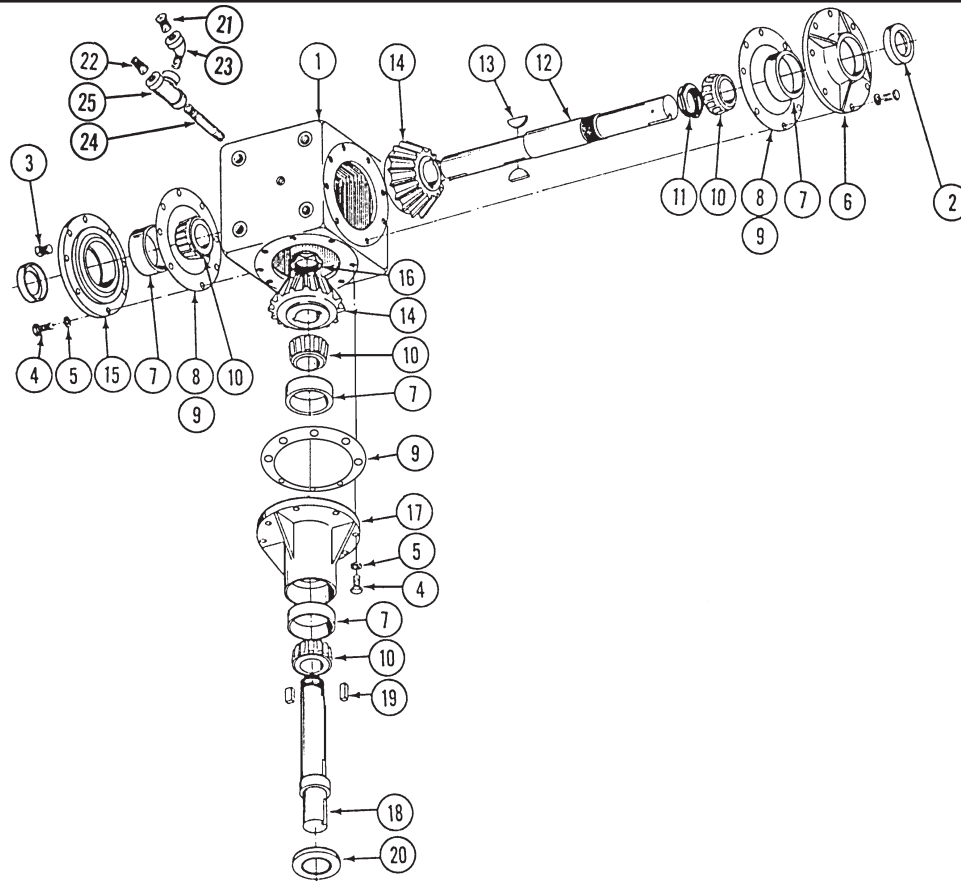
(WGN94)



| ITEM | PART NO. | QTY. | DESCRIPTION | |
|--------|---------------|--------|--|-------|
| 1. | GA4112 | 2 | Single Red Light Assembly Complete W/Female Terminal | |
| | GA4123 | - | Double Amber Light Assembly complete W/Male Terminal | |
| | GR0968 | - | Bulb, #1156 | |
| | GR0970 | - | Red Lens | |
| | GR0969 | - | Amber Lens | |
| | G10289 | - | Hex Nut, 1/2"- 20 | |
| | G10525 | - | Star Washer, 1/2" | |
| | Not Available | - | Rubber Washer | |
| | GR0971 | - | O-Ring Gasket | |
| | GR0972 | - | Pigtail | |
| | G10266 | - | Female Terminal | |
| | G10269 | - | Male Terminal | |
| | 2. | GD6273 | 2 | Mount |
| | | 3. | G10001 | - |
| G10229 | - | | Lock Washer, 3/8" | |
| G10101 | - | | Hex Nut, 3/8"-16 | |
| 4. | GA4127 | 1 | Wiring Harness Assembly, 600HD/800 | |
| | GA4128 | - | Wiring Harness Assembly, 1200 | |
| 5. | GD6291 | 1 | Clamp | |
| 6. | G10229 | 1 | Lock Washer, 3/8" | |
| | G10101 | - | Hex Nut, 3/8"-16 | |
| 7. | GD1512 | - | Tie Strap, 6" (Not Shown) | |
| A. | G1K156 | - | Light Package, Includes: (4)10001, (13)10101, (13)10229, (2)A4122, (2)A4123, (1)A4127, (4)D1512, (2)D6273, (11)D6291 | |

GEARBOX

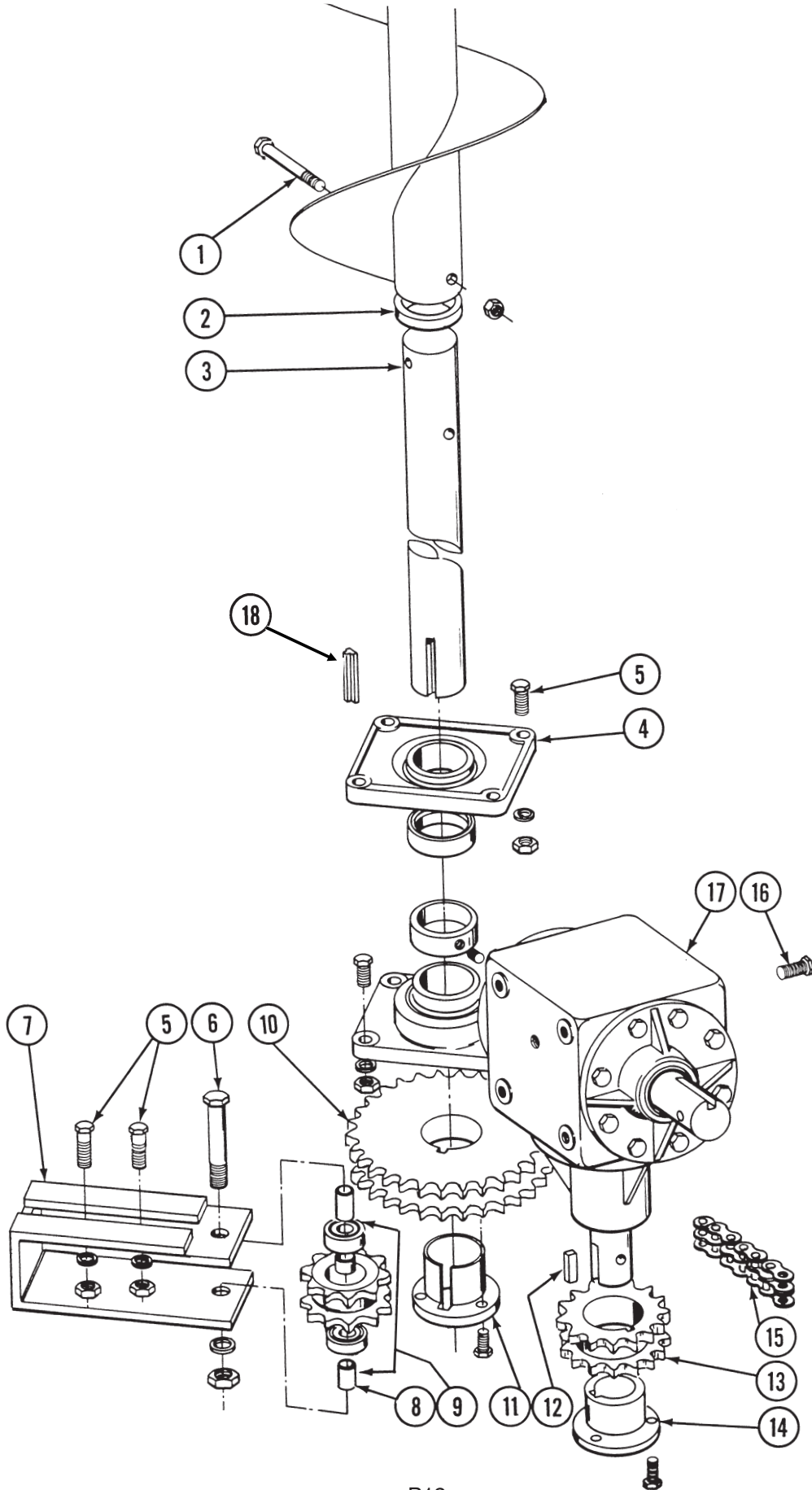
GBX001(WGN24)



| ITEM | PART NO. | QTY. | DESCRIPTION |
|------|----------|------|--------------------------------------|
| 1. | GR0291 | 1 | Housing |
| 2. | GR0302 | 2 | Seal |
| 3. | G10135 | 1 | Plug, 1/4"-18 NPT |
| 4. | G10037 | 24 | Hex Head Cap Screw, 1/2"-13 x 1 1/4" |
| 5. | G10228 | 24 | Lock Washer, 1/2" |
| 6. | GR0292 | 1 | Cover |
| 7. | GR0296 | 4 | Cup |
| 8. | GR0304 | - | Shim |
| 9. | GR0305 | 3 | Gasket |
| 10. | GA0699 | 4 | Bearing |
| 11. | GR0298 | 1 | Stake Nut, 2"-18 |
| 12. | GR0300 | 1 | Shaft |
| 13. | GR0297 | 2 | Woodruff Key, "G" |
| 14. | GR0295 | 2 | Bevel Gear Set (Pair) |
| 15. | GR0293 | 1 | Cover |
| 16. | GR0299 | 1 | Stake Nut, 1 3/4"-18 |
| 17. | GR0294 | 1 | Hub |
| 18. | GR0301 | 1 | Shaft |
| 19. | GR0307 | 2 | Key, 3/8" x 3/8" x 1 3/8" |
| 20. | GR0303 | 1 | Seal |
| 21. | GR0306 | 1 | Vent Plug, 3/8"-18 NPT |
| 22. | G10142 | - | Hex Socket Plug, 3/8" |
| 23. | G10123 | 1 | Elbow, 3/8"-18 NPT 90° |
| 24. | G10124 | 1 | Pipe Nipple, 3/8"-18 NPT |
| 25. | G10749 | - | Pipe Tee, 3/8"-18 NPT |
| A. | GA0624 | - | Gearbox Complete (Items 1-21) |

VERTICAL AUGER DRIVE

(WGN95)

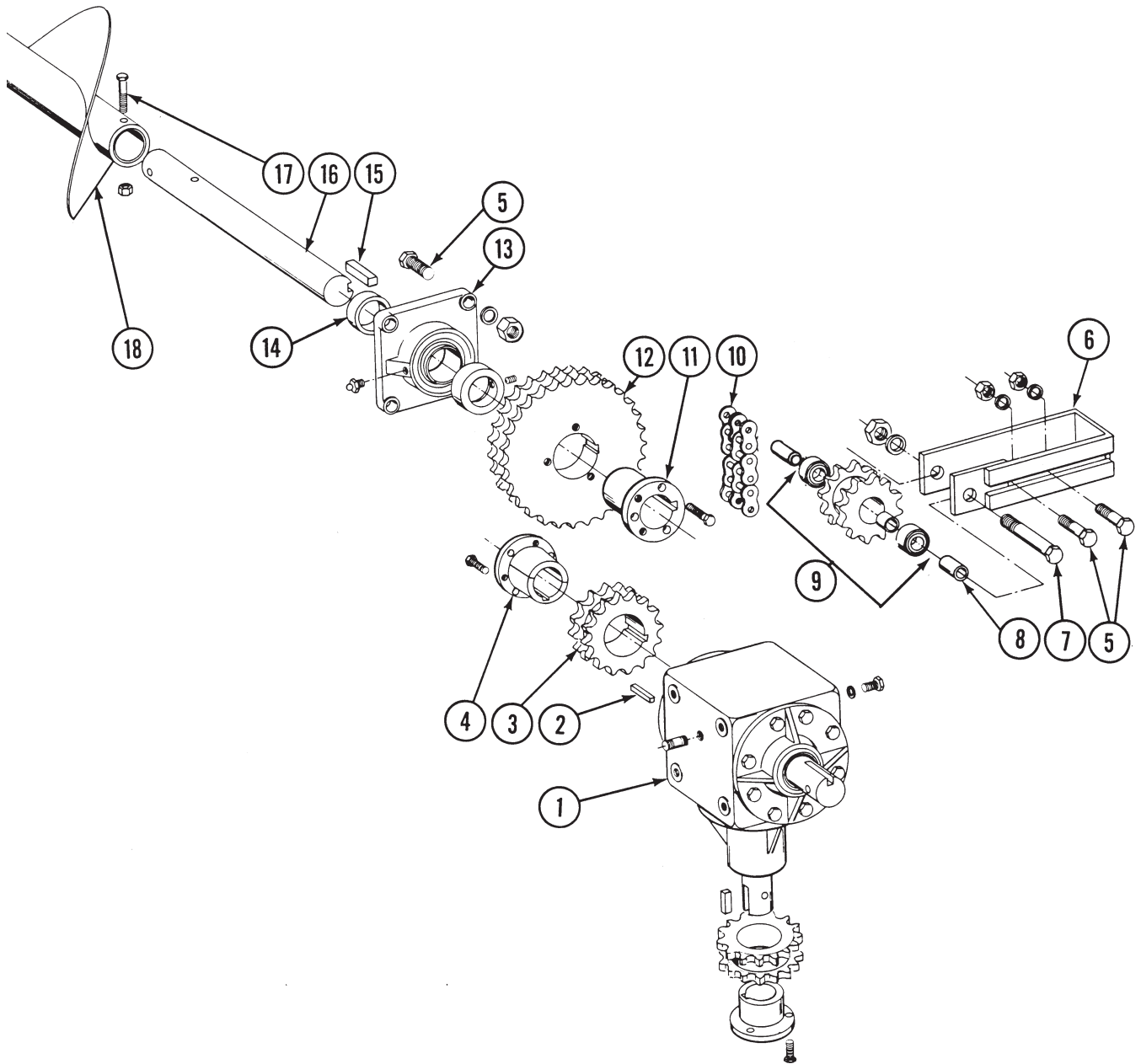


VERTICAL AUGER DRIVE

| ITEM | PART NO. | QTY. | DESCRIPTION |
|------|----------|------|---|
| 1. | G10011 | 2 | Hex Head Cap Screw, $\frac{5}{8}$ "-11 x 5 $\frac{1}{2}$ " |
| | G10107 | 2 | Lock Nut, $\frac{5}{8}$ "-11 |
| 2. | GD4017 | 1 | Spacer, 1" |
| 3. | GD4008 | 1 | Shaft, 2 $\frac{7}{16}$ " x 25" (Sub. GD6885) |
| 4. | GA0448 | 1 | Bearing W/Lock Collar, Set Screw And Grease Fitting |
| | GR0264 | - | Lock Collar, 2 $\frac{6}{17}$ " |
| | G10080 | - | Set Screw, $\frac{7}{16}$ " x $\frac{7}{16}$ " |
| | G10641 | - | Grease Fitting, $\frac{1}{8}$ " NPT |
| 5. | G10008 | 8 | Hex Head Cap Screw, $\frac{5}{8}$ "-11 x 2" |
| | G10230 | 8 | Lock Washer, $\frac{3}{4}$ " |
| | G10104 | 8 | Hex Nut, $\frac{5}{8}$ "-11 |
| 6. | G10029 | 1 | Hex Head Cap Screw, $\frac{3}{4}$ "-10 x 4 $\frac{1}{2}$ " |
| | G10231 | - | Lock Washer, $\frac{3}{4}$ " |
| | G10105 | - | Hex Nut, $\frac{3}{4}$ "-10 |
| 7. | GA0424 | 1 | Idler Bracket |
| 8. | GD2951 | 2 | Sleeve |
| 9. | GA0447 | 1 | Idler Sprocket W/Spacer And Bearings |
| | GR0259 | - | Spacer |
| | GA0593 | - | Bearing |
| 10. | GD1357 | 1 | Sprocket, 30 Tooth |
| 11. | GD1358 | 1 | Bushing, 2 $\frac{7}{16}$ ", W/Hex Head Cap Screws And Key |
| | GR0258 | - | Key, Offset |
| | G10004 | - | Hex Head Cap Screw, $\frac{3}{8}$ "-16 x 1 $\frac{1}{4}$ " |
| 12. | GD0144 | 1 | Key, $\frac{3}{8}$ " x $\frac{3}{8}$ " x 2 $\frac{1}{2}$ " |
| 13. | GD4077 | 1 | Sprocket, 16 Tooth |
| 14. | GD4079 | 1 | Bushing, 1 $\frac{3}{4}$ ", W/Hex Head Cap Screws |
| | G10004 | - | Hex Head Cap Screw, $\frac{3}{8}$ "-16 x 1 $\frac{1}{4}$ " |
| 15. | G3301-65 | 1 | Chain, No. 80-2, 65 Pitch Including Connector And Offset Link |
| | GR0206 | - | Offset Link, No. 80-2 |
| | GR0198 | - | Connector Link, No 80-2 |
| | G10055 | 1 | Hex Head Cap Screw, $\frac{5}{8}$ "-11 x 1 $\frac{1}{4}$ " |
| 16. | G10055 | 1 | Hex Head Cap Screw, $\frac{5}{8}$ "-11 x 1 $\frac{1}{4}$ " |
| 17. | GA0624 | 1 | Gearbox |
| 18. | GR0258 | 1 | Key, Offset |

FRONT HORIZONTAL AUGER AND DRIVE

(WGN96)



FRONT HORIZONTAL AUGER AND DRIVE

| ITEM | PART NO. | QTY. | DESCRIPTION |
|------|----------|------|---|
| 1. | GA0624 | 1 | Gearbox |
| 2. | GD0144 | 1 | Key, $\frac{3}{8}$ " x $\frac{3}{8}$ " x 2 $\frac{1}{2}$ " |
| 3. | GD4077 | 1 | Sprocket, 16 Tooth |
| 4. | GD4079 | 1 | Bushing, 1 $\frac{3}{4}$ ", W/Hex Head Cap Screws |
| | G10004 | - | Hex Head Cap Screw, $\frac{3}{8}$ "-16 x 1 $\frac{1}{4}$ " |
| 5. | G10009 | 2 | Hex Head Cap Screw, $\frac{5}{8}$ "-11 x 2 $\frac{1}{2}$ " |
| | G10230 | 2 | Lock Washer, $\frac{5}{8}$ " |
| | G10104 | 2 | Hex Nut $\frac{5}{8}$ "-11 |
| 6. | GA0424 | 1 | Idler Bracket |
| 7. | G10029 | 1 | Hex Head Cap Screw, $\frac{3}{4}$ "-10 x 4 $\frac{1}{2}$ " |
| | G10231 | 1 | Lock Washer, $\frac{3}{4}$ " |
| | G10105 | 1 | Hex Nut, $\frac{3}{4}$ "-10 |
| 8. | GD2951 | 2 | Sleeve |
| 9. | GA0447 | 2 | Sprocket W/Spacer And Bearings |
| | GA0593 | - | Bearing |
| | GR0259 | - | Spacer |
| 10. | G3301-47 | 1 | Chain, No. 80-2, 47 Pitch Including Connector And Offset Link |
| | GR0206 | - | Offset Link, No. 80-2 |
| | GR0198 | - | Connector Link, No. 80-2 |
| 11. | GD4123 | 1 | Bushing, 2", W/Hex Head Cap Screws |
| | G10004 | - | Hex Head Cap Screw, $\frac{3}{8}$ "-16 x 1 $\frac{1}{4}$ " |
| 12. | GD1357 | 1 | Sprocket, 30 Tooth |
| 13. | GA0449 | 1 | Bearing, 2", W/Lock Collar, Set Screw And Grease Fitting |
| | GR0265 | - | Lock Collar |
| | G10080 | - | Set Screw, $\frac{7}{16}$ " x $\frac{7}{16}$ " |
| | G10641 | - | Grease Fitting, $\frac{1}{8}$ " NPT |
| 14. | GD4016 | 1 | Spacer |
| 15. | GD1435 | 1 | Key, $\frac{1}{2}$ " x $\frac{1}{2}$ " x 3" |
| 16. | GD1346 | 1 | Shaft, 2" x 18 $\frac{1}{2}$ " |
| 17. | G10036 | 1 | Hex Head Cap Screw, $\frac{5}{8}$ "-11 x 4" |
| | G10107 | 1 | Lock Nut, $\frac{5}{8}$ " - 11 |
| 18. | * | 1 | Auger, 12" x 11' 2", L.H. |

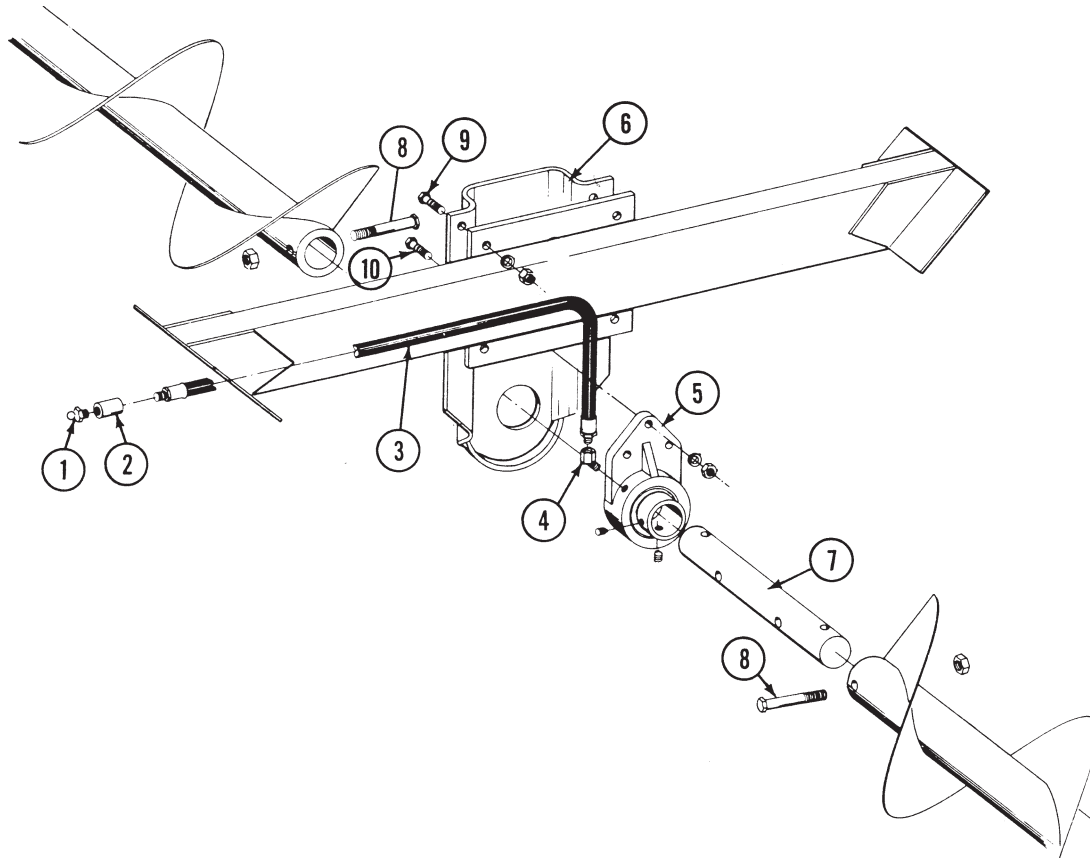
* Substitute GA6919 Auger and GD9821 Shaft.

HORIZONTAL CENTER BEARING

800

(WGN97)

Serial No. 821001 And On



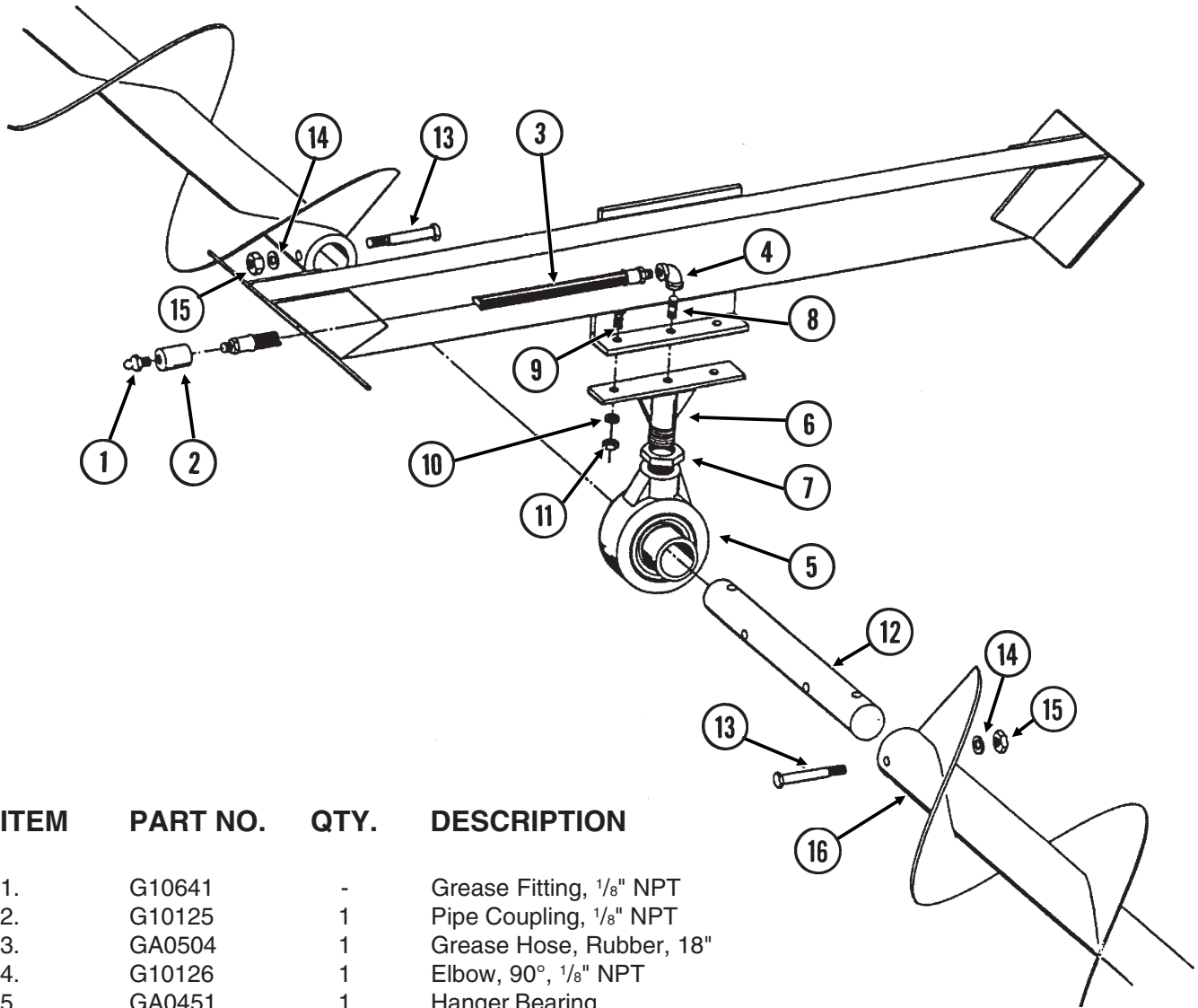
| ITEM | PART NO. | QTY. | DESCRIPTION |
|------|-------------|------|--------------------------------------|
| 1. | G10641 | - | Grease Fitting, 1/8" NPT |
| 2. | G10125 | 1 | Pipe Coupling, 1/8" NPT |
| 3. | GA0504 | 1 | Grease Hose, 24" |
| 4. | G5503-02-02 | 1 | Elbow, 45° |
| 5. | GA0517 | 1 | Bearing W/Set Screws |
| | G10132 | 3 | Set Screw, 3/8"-24 x 5/16" |
| 6. | GA0685 | 1 | Mount |
| 7. | GD4010 | 1 | Shaft, 2" x 13 1/2" |
| 8. | G10318 | 1 | Hex Head Cap Screw, 5/8"-11 x 4 1/2" |
| | G10107 | 1 | Lock Nut, 5/8" - 11 |
| 9. | G10016 | 4 | Hex Head Cap Screw, 1/2"-13 x 2" |
| | G10228 | 4 | Lock Washer, 1/2" |
| | G10102 | 4 | Hex Nut, 1/2"-13 |
| 10. | G10017 | 1 | Hex Head Cap Screw, 1/2"-13 x 1 1/2" |
| | G10228 | 1 | Lock Washer, 1/2" |
| | G10102 | 1 | Hex Nut, 1/2"-13 |

HORIZONTAL CENTER BEARING

600HD/800

(WGN98)

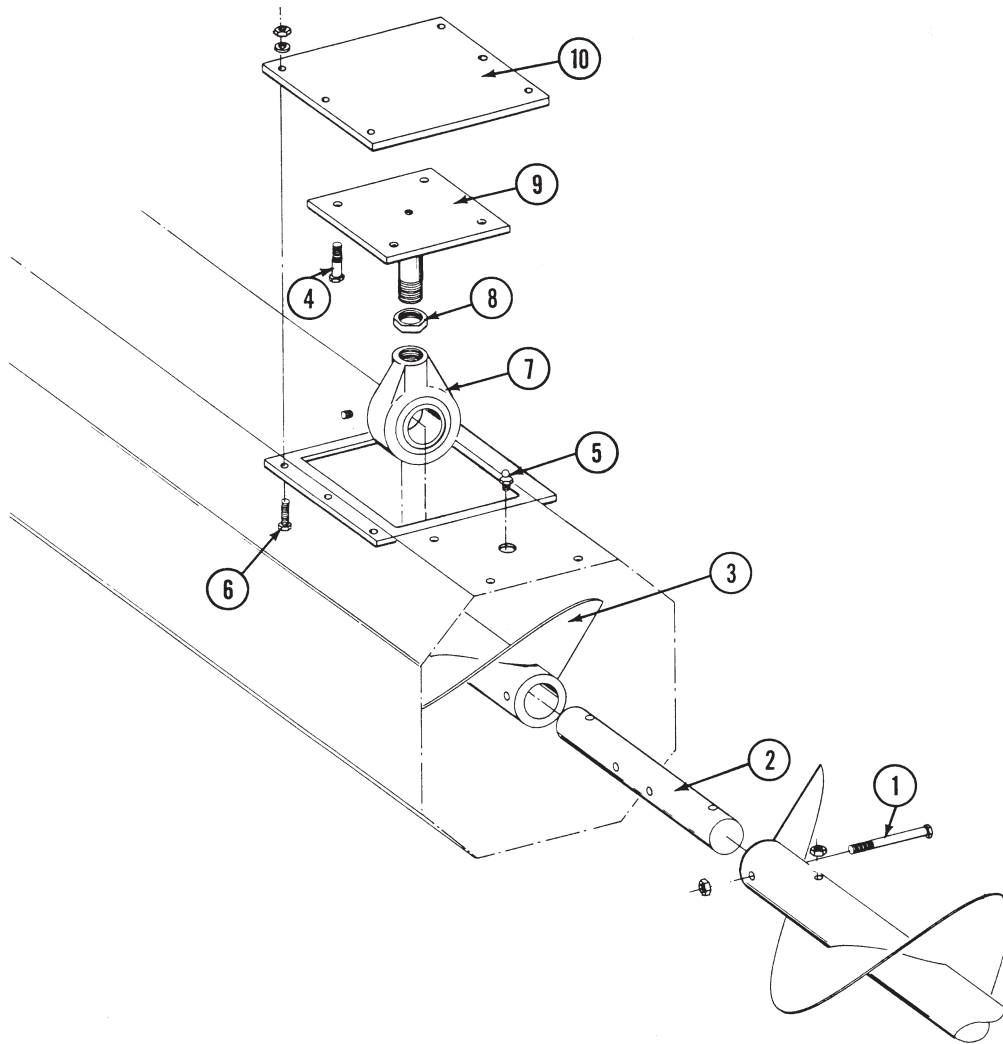
Serial No. 7901-821000



| ITEM | PART NO. | QTY. | DESCRIPTION |
|------|----------|------|--|
| 1. | G10641 | - | Grease Fitting, 1/8" NPT |
| 2. | G10125 | 1 | Pipe Coupling, 1/8" NPT |
| 3. | GA0504 | 1 | Grease Hose, Rubber, 18" |
| 4. | G10126 | 1 | Elbow, 90°, 1/8" NPT |
| 5. | GA0451 | 1 | Hanger Bearing |
| 6. | GA0429 | 1 | Carrier Bearing Bracket |
| 7. | G10115 | 1 | Lock Nut, 1" NPT |
| 8. | G10127 | 1 | Pipe Nipple, 1/8" NPT x 1 1/2" |
| 9. | G10039 | 2 | Hex Head Cap Screw, 1/2"-13 x 1 3/4" |
| 10. | G10228 | 2 | Lock Washer, 1/2" |
| 11. | G10102 | 2 | Hex Nut, 1/2" - 13 |
| 12.* | GD4010 | 1 | Center Shaft |
| 13. | G10036 | 1 | Hex Head Cap Screw, 5/8"-11 x 4" |
| 14. | G10230 | 1 | Lock Washer, 5/8" |
| 15. | G10104 | 1 | Hex Nut, 5/8"-11 |
| 16. | * | 1 | Auger, Front (Sub GA6919 Auger And GD9821 Shaft) |

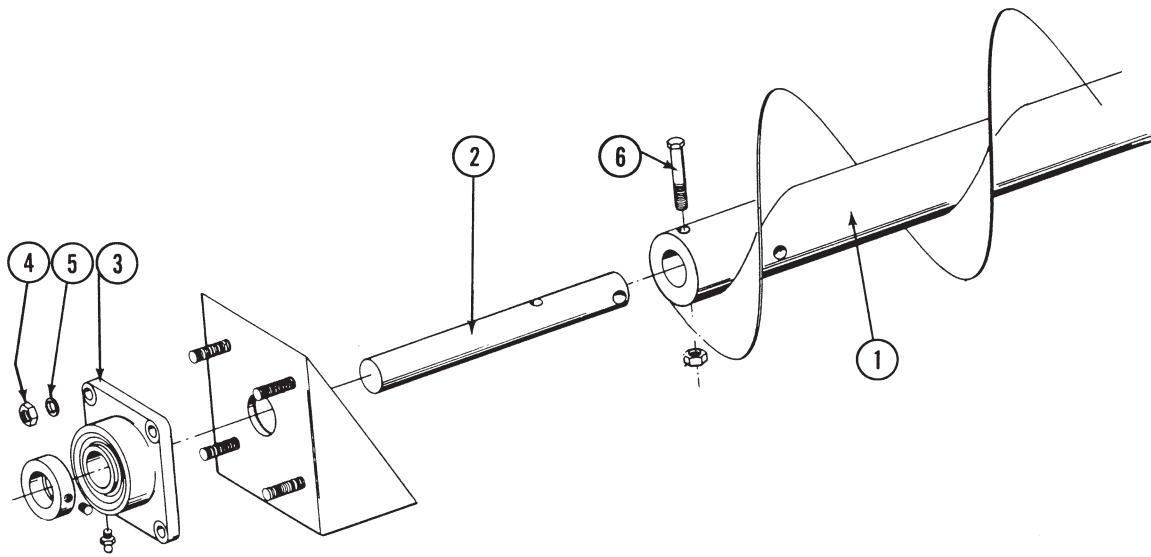
* Please note: If rear auger has 1 1/2" I.D., use GD4011 Shaft

(WGN99)



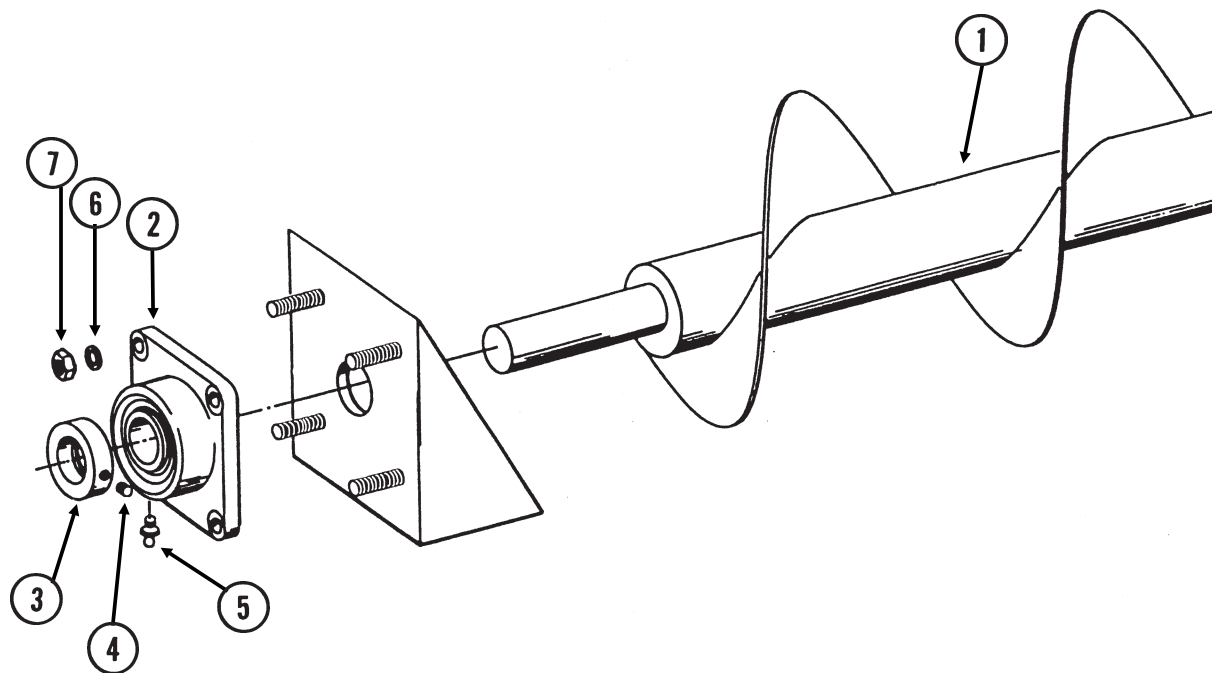
| ITEM | PART NO. | QTY. | DESCRIPTION |
|------|----------|------|--|
| 1. | G10318 | 1 | Hex Head Cap Screw, $\frac{5}{8}$ "-11 x 4 $\frac{1}{2}$ " |
| | G10107 | 1 | Lock Nut, $\frac{5}{8}$ "-11 |
| 2. | GD4010 | 1 | Shaft, 2" x 13 $\frac{1}{2}$ " |
| 3. | GA4540 | 1 | Auger, 12" x 4' 10 $\frac{1}{2}$ ", L.H. |
| 4. | G10037 | 4 | Hex Head Cap Screw, $\frac{1}{2}$ "-13 x 1 $\frac{1}{4}$ " |
| | G10228 | 4 | Lock Washer, $\frac{1}{2}$ " |
| | G10102 | 4 | Hex Nut, $\frac{1}{2}$ "-13 |
| 5. | G10641 | 1 | Grease Fitting, $\frac{1}{8}$ " NPT |
| 6. | G10004 | 6 | Hex Head Cap Screw, $\frac{3}{8}$ "-16 x 1 $\frac{1}{4}$ " |
| | G10229 | 6 | Lock Washer, $\frac{3}{8}$ " |
| | G10101 | 6 | Hex Nut, $\frac{3}{8}$ "-16 |
| 7. | GA0451 | 1 | Bearing |
| 8. | G10115 | 1 | Lock Nut, 1" NPT |
| 9. | GA0790 | 1 | Bracket |
| 10. | GD1581 | 1 | Inspection Plate |

(WGN100)



| ITEM | PART NO. | QTY. | DESCRIPTION |
|------|----------|------|--|
| 1. | GA4537 | 1 | Auger, 12" x 8', L.H., 800 |
| | GA4531 | 1 | Auger, 12" x 81 1/2", L.H., 1200 |
| 2. | GD1347 | 1 | Shaft, 2" x 13" |
| 3. | GA0449 | 1 | Bearing, 2", W/Lock Collar, Set Screw And Grease Fitting |
| | GR0265 | 1 | Lock Collar |
| | G10080 | 4 | Set Screw, 7/16" x 7/16" |
| | G10641 | - | Grease Fitting, 1/8" NPT |
| 4. | G10104 | 4 | Hex Nut, 5/8"-11 |
| 5. | G10230 | 4 | Lock Washer, 5/8" |
| 6. | G10318 | 1 | Hex Head Cap Screw, 5/8"-11 x 4 1/2" |
| | G10107 | 1 | Lock Nut, 5/8"-11 |
| 7. | G10185 | 1 | Pipe Plug, 2" (Not Shown-Located In Bottom Of Wagon) |

(WGN101)

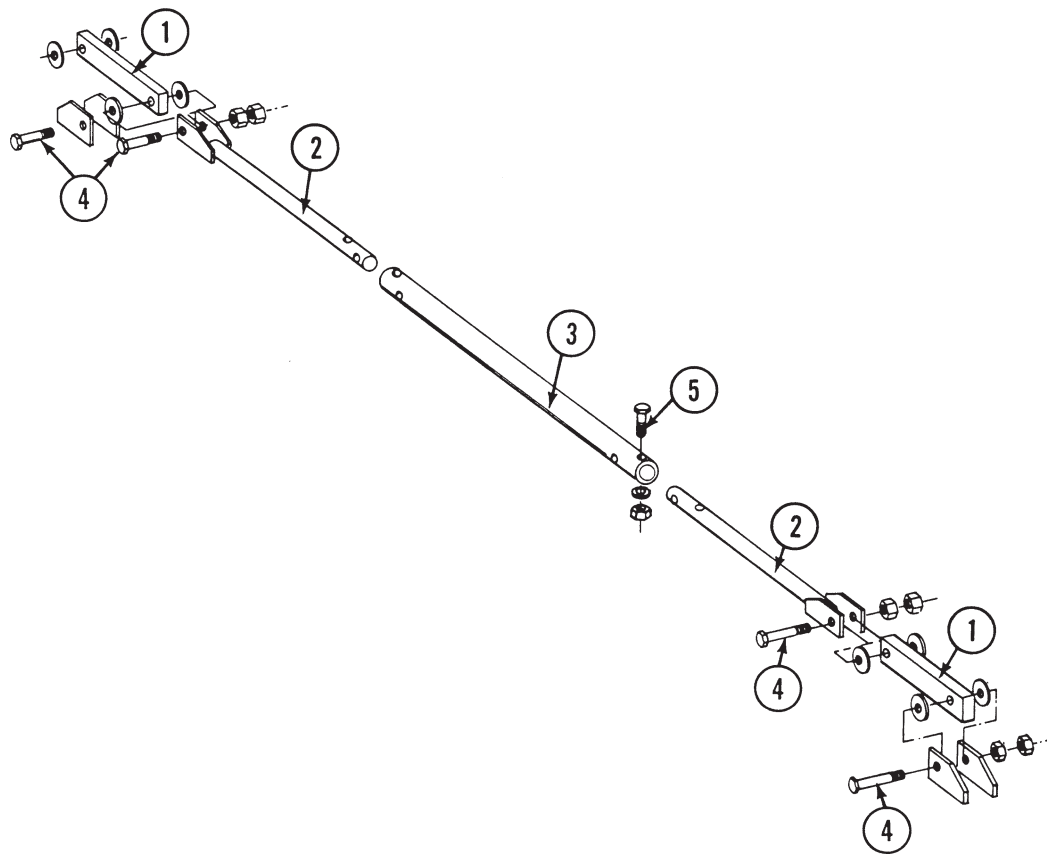


| ITEM | PART NO. | QTY. | DESCRIPTION |
|------|----------|------|--|
| 1. | * | 1 | Auger Sub-Weld, 9" x 8' (1 1/2" I.D.) |
| 2. | GA0450 | 1 | Bearing, 1 1/2", Includes Lock Collar |
| 3. | GR0266 | 1 | Lock Collar, 1 1/2" |
| 4. | G10120 | 1 | Set Screw, 3/8" x 1 1/2" Hex Head Socket |
| 5. | G10641 | 1 | Grease Fitting, 1/8" NPT |
| 6. | G10228 | 4 | Lock Washer, 1/2" |
| 7. | G10102 | 4 | Hex Nut, 1/2"-13 |

* For Item #1, Sub:

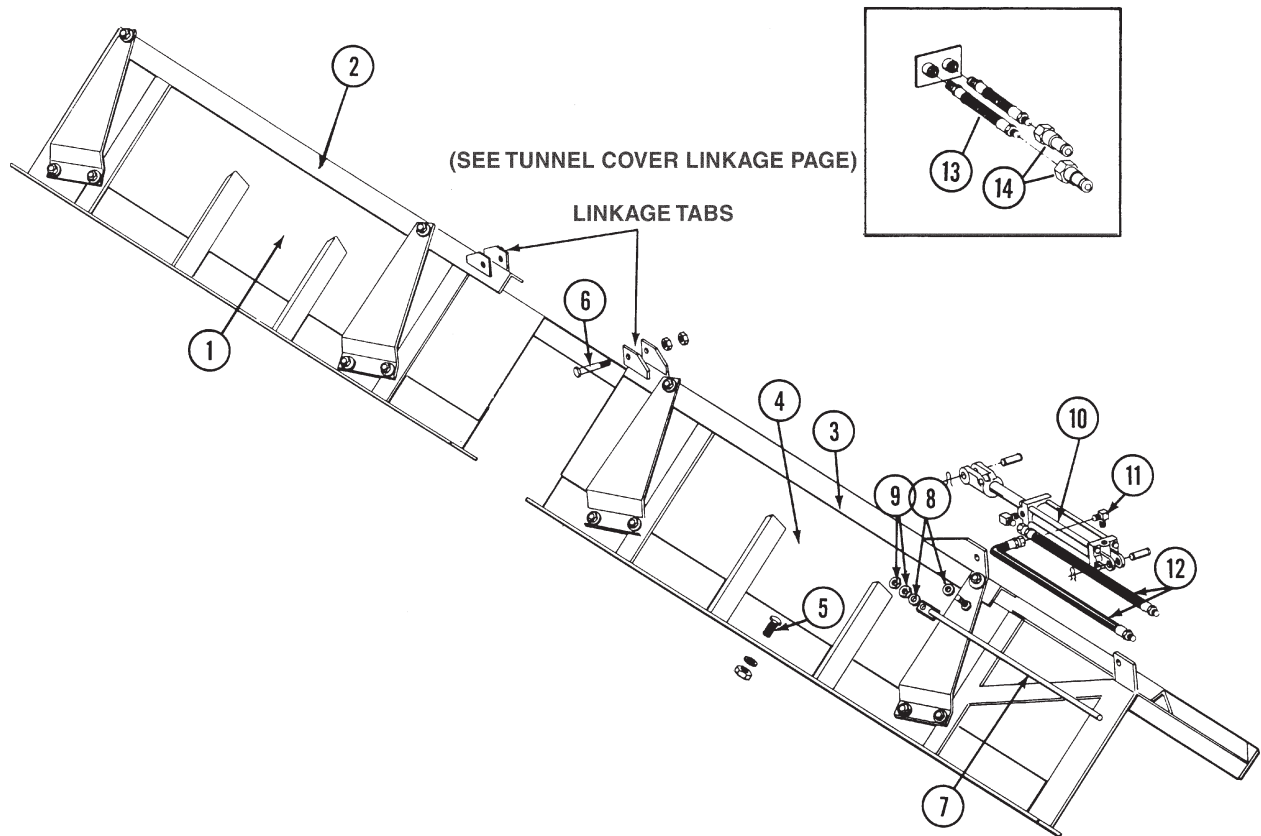
| | | |
|--------|---|---------------------------------------|
| GA4537 | - | Auger, 12" x 8' (2/3 Pitch) (2" I.D.) |
| GD2631 | - | Bushing |
| GD3246 | - | Shaft |
| G10036 | - | Cap Screw (2 Used) |
| G10107 | - | Lock Nut (2 Used) |

(WGN102)



| ITEM | PART NO. | QTY. | DESCRIPTION |
|------|----------|------|--|
| 1. | GD1541 | 2 | Linkage Bar |
| 2. | G1K135 | 2 | Linkage Shaft Kit |
| 3. | GD1547 | 1 | Coupler, Linkage |
| 4. | G10056 | 4 | Hex Head Cap Screw, $\frac{3}{4}$ "-10 x 3 $\frac{1}{2}$ " |
| | G10218 | 8 | Washer, $\frac{3}{4}$ " USS |
| | G10105 | 4 | Hex Nut, $\frac{3}{4}$ "-10 |
| 5. | G10038 | 1 | Hex Head Cap Screw, $\frac{1}{2}$ "-13 x 3" |
| | G10228 | 1 | Lock Washer, $\frac{1}{2}$ " |
| | G10102 | 1 | Hex Nut, $\frac{1}{2}$ "-13 |

(WGN103)



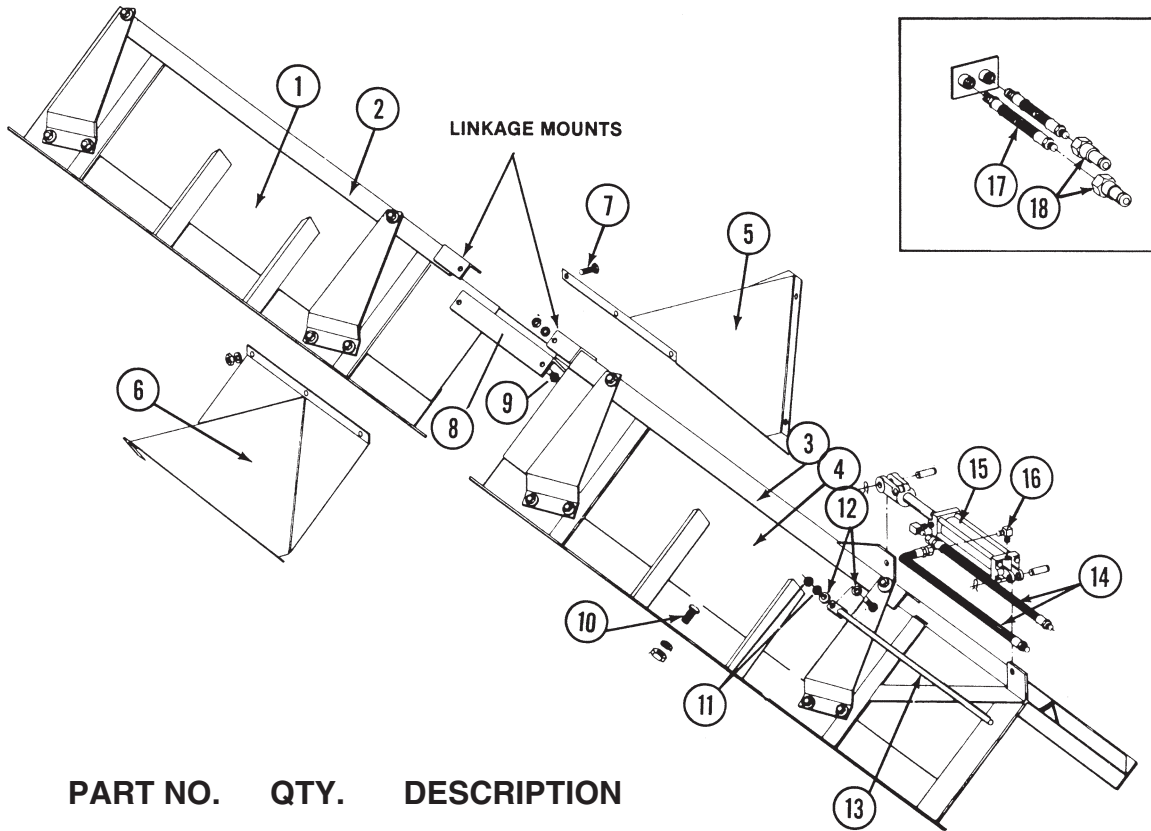
| ITEM | PART NO. | QTY. | DESCRIPTION |
|------|-------------|------|---|
| 1. | GA0807 | - | Tunnel Cover Assembly - Rear Half (Includes Item 2 Less Linkage Tabs) |
| 2. | GA0805 | 1 | Rear Linkage Arm |
| 3. | GA0804 | 1 | Front Linkage Arm |
| 4. | GA0689 | - | Tunnel Cover Assembly - Front Half (Includes Item 3 Less Linkage Tabs) |
| 5. | G10001 | 6 | Hex Head Cap Screw, $\frac{3}{8}$ "-16 x 1" |
| | G10229 | 6 | Lock Washer, $\frac{3}{8}$ " |
| | G10101 | 6 | Hex Nut, $\frac{3}{8}$ "-16 |
| 6. | G10056 | 4 | Hex Head Cap Screw, $\frac{3}{4}$ "-10 x 3 $\frac{1}{2}$ " |
| | G10105 | 4 | Hex Nut, $\frac{3}{4}$ "-10 |
| 7. | GA0686 | 1 | Sight Gauge Rod |
| 8. | G10216 | 2 | Washer, $\frac{1}{2}$ " USS |
| 9. | G10102 | 2 | Hex Nut, $\frac{1}{2}$ "-13 |
| 10. | A0281 | 1 | Cylinder, Grain Flow Control Gate (Sub. GA4255) |
| 11. | G2501-08-08 | 1 | Elbow 90° |
| 12. | *A1017 | 2 | Hose Assembly, $\frac{3}{8}$ " x 24" |
| 13. | *A1016 | 2 | Hose Assembly, $\frac{3}{8}$ " x 120" |
| 14. | GD4086 | 2 | Hose Tip, Pioneer |

* Hydraulic hose is not stocked by KINZE® Repair Parts, but can be made available on a special order basis. Call for quote.

GRAIN FLOW CONTROL GATE

600HD/800

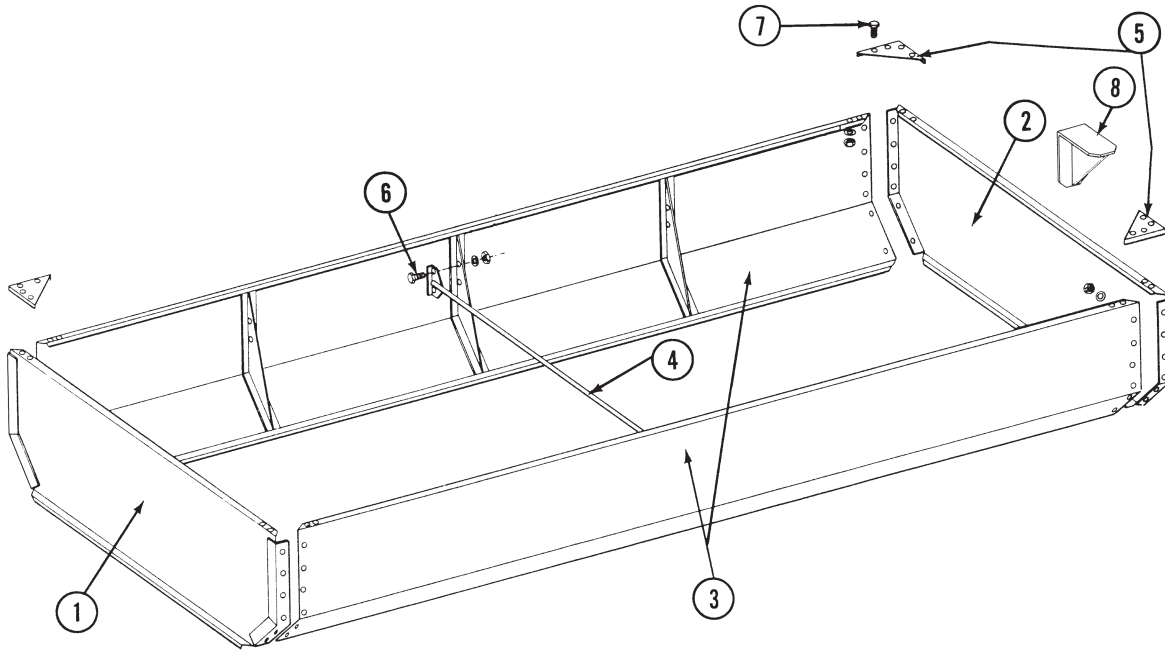
(WGN104)



| ITEM | PART NO. | QTY. | DESCRIPTION |
|------|-------------|------|--|
| 1. | GA0690 | - | Tunnel Cover Assembly - Rear Half (Includes Item 2 Less Linkage Mount) |
| 2. | GA0688 | 1 | Rear Linkage Arm |
| 3. | GA0687 | 1 | Front Linkage Arm |
| 4. | GA0689 | - | Tunnel Cover Assembly - Front Half (Includes Item 3 Less Linkage Mount) |
| 5. | GA0695 | 1 | Center Bearing Cover - Left Hand |
| 6. | GA0696 | 1 | Center Bearing Cover - Right Hand |
| 7. | G10001 | 6 | Hex Head Cap Screw, 3/8"-16 x 1" |
| | G10029 | 6 | Lock Washer, 3/8" |
| | G10101 | 6 | Hex Nut, 3/8"-16 |
| 8. | GD4061 | 1 | Connector Arm |
| 9. | G10025 | 2 | Hex Head Cap Screw, 3/4"-10 x 1 1/2" |
| | G10231 | 2 | Lock Washer, 3/4" |
| | G10105 | 2 | Hex Nut, 3/4"-10 |
| 10. | G10004 | 36 | Hex Head Cap Screw, 3/8"-16 x 1 1/4" |
| | G10029 | 36 | Lock Washer, 3/8" |
| | G10101 | 36 | Hex Nut, 3/8" -16 |
| 11. | G10102 | 1 | Hex Nut, 1/2" -13 |
| 12. | G10216 | 2 | Washer, 1/2" USS |
| 13. | GA0686 | 1 | Rod |
| 14. | *A1017 | 2 | Hose Assembly, 3/8" x 24" |
| 15. | A0281 | 1 | Cylinder, Grain Flow Control Gate (Sub. GA4255) |
| 16. | G2501-08-08 | 1 | Elbow 90° |
| 17. | *A1016 | 1 | Hose Assembly, 3/8" x 120" |
| 18. | GD4086 | 2 | Hose Tip, Pioneer |

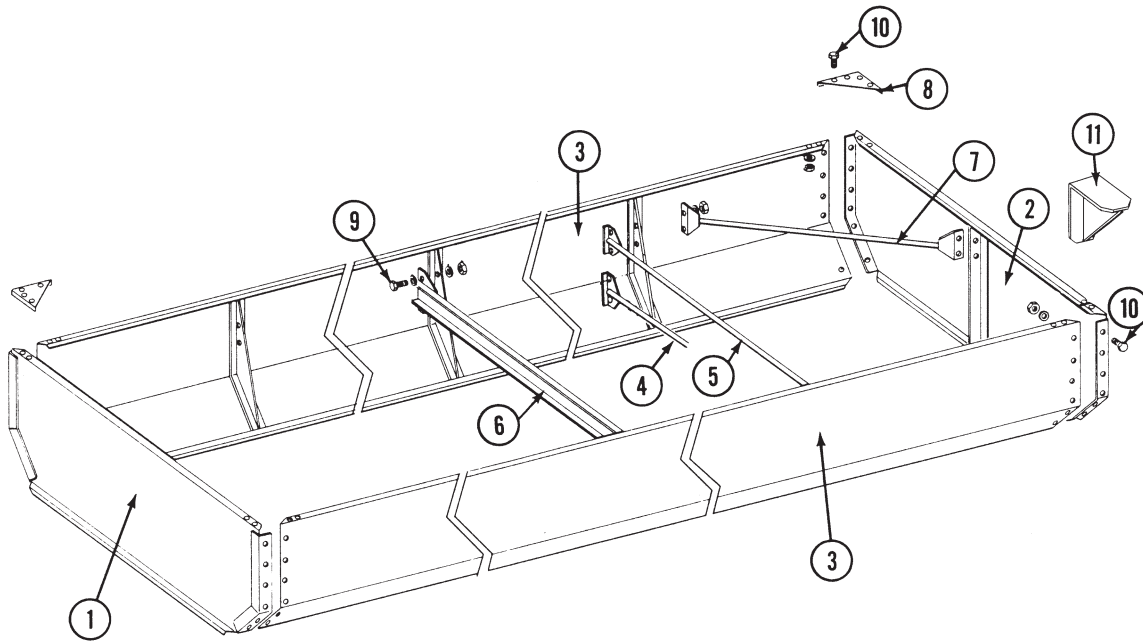
* Hydraulic hose is not stocked by KINZE® Repair Parts, but can be made available on a special order basis. Call for quote.

(WGN105)



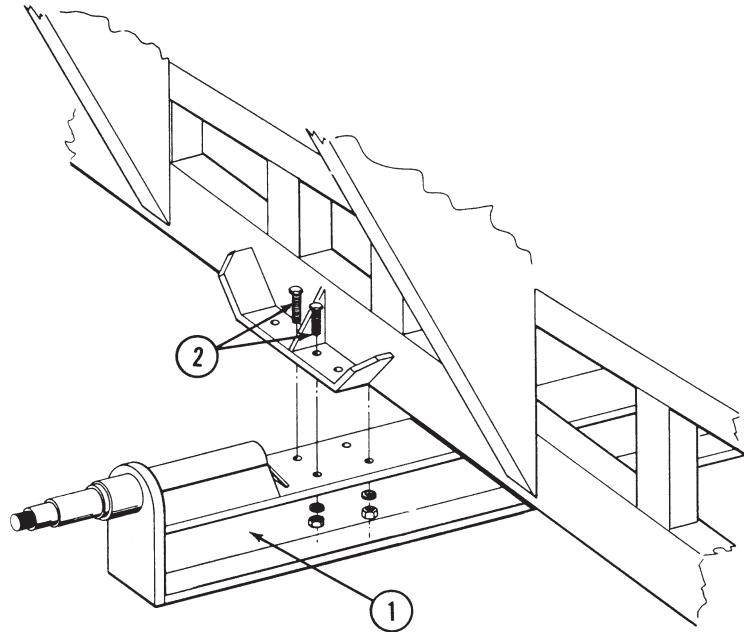
| ITEM | PART NO. | QTY. | DESCRIPTION |
|------|----------|------|--------------------------------------|
| 1. | GA0436 | 1 | Rear Panel |
| 2. | GA0439 | 1 | Front Panel |
| 3. | GA0654 | 2 | Side Panel |
| 4. | GA0437 | 1 | Cross Brace |
| 5. | GD0327 | 4 | Outer Corner Gusset |
| 6. | G10017 | - | Hex Head Cap Screw, 1/2"-13 x 1 1/2" |
| | G10228 | - | Lock Washer, 1/2" |
| | G10102 | - | Hex Nut, 1/2"-13 |
| 7. | G10001 | 16 | Hex Head Cap Screw, 3/8"-16 x 1" |
| | G10229 | 16 | Lock Washer, 3/8" |
| | G10101 | 16 | Hex Nut, 3/8"-16 |
| 8. | GA0435 | 1 | Auger Stop (Must Be Welded In Place) |

(WGN106)



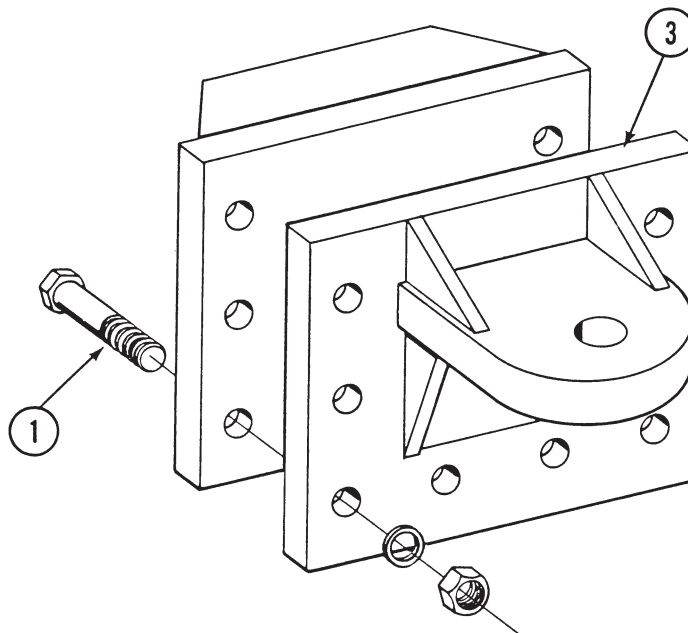
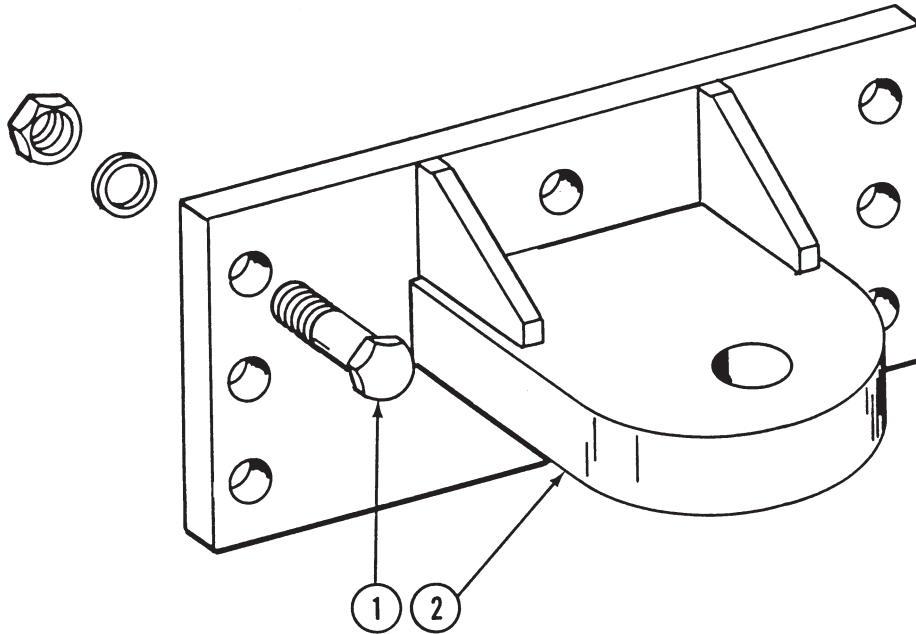
| ITEM | PART NO. | QTY. | DESCRIPTION |
|------|----------|------|--------------------------------------|
| 1. | GA0795 | 1 | Rear Panel |
| 2. | GA0794 | 1 | Front Panel |
| 3. | GA0796 | 2 | Side Panel |
| 4. | GA0431 | 1 | Cross Brace |
| 5. | GA0798 | 1 | Cross Brace |
| 6. | GA0799 | 1 | Center Cross Tie |
| 7. | GA0801 | 4 | End Cross Brace |
| 8. | GD0327 | 4 | Outer Corner Gusset |
| 9. | G10017 | - | Hex Head Cap Screw, 1/2"-13 x 1 1/2" |
| | G10216 | - | Washer, 1/2" USS |
| | G10228 | - | Lock Washer, 1/2" |
| | G10102 | - | Hex Nut, 1/2"-13 |
| 10. | G10001 | 16 | Hex Head Cap Screw, 3/8"-16 x 1" |
| | G10229 | 16 | Lock Washer, 3/8" |
| | G10101 | 16 | Hex Nut, 3/8"-16 |
| 11. | GA0435 | 1 | Auger Stop (Must Be Welded In Place) |

(WGN107)



| ITEM | PART NO. | QTY. | DESCRIPTION |
|------|----------|------|--|
| 1. | GA4137 | 1 | Axle, 90" Standard |
| | GA4138 | 1 | Axle, 120" |
| 2. | G10027 | 2 | Hex Head Cap Screw, $\frac{3}{4}$ "-10 x 2 $\frac{1}{2}$ " |
| | G10231 | 2 | Lock Washer, $\frac{3}{4}$ " |
| | G10105 | 2 | Hex Nut, $\frac{3}{4}$ "-10 |

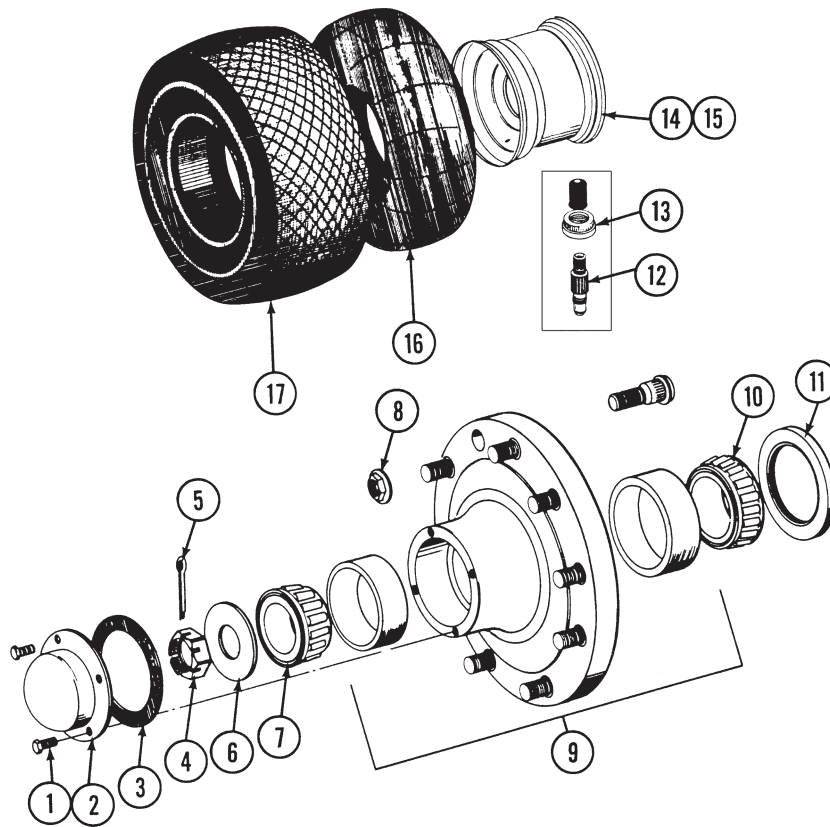
(WGN110)



| ITEM | PART NO. | QTY. | DESCRIPTION |
|------|----------|------|--|
| 1. | G10119 | 8 | Hex Head Cap Screw, 1"-8 x 3" |
| | G10118 | 8 | Lock Washer, 1" |
| | G10117 | 8 | Hex Nut, 1"-8 |
| 2. | GA1606 | 1 | Hitch Plate |
| 3. | - | - | Hitch Plate (Obsolete - Not Available) |

TIRE AND HUB ASSEMBLY

(WGN109)



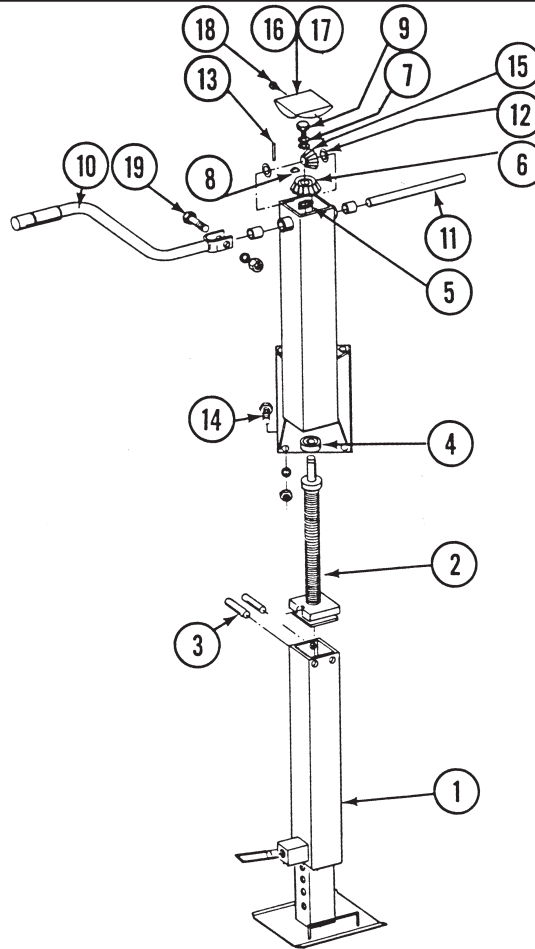
TIRE AND HUB ASSEMBLY

| ITEM | PART NO. | QTY. | DESCRIPTION |
|------|----------|------|--|
| 1. | G10054 | 4 | Hex Head Cap Screw, $\frac{5}{16}$ "-18 x $\frac{1}{2}$ " |
| 2. | GD1360 | 1 | Cap |
| 3. | GD1359 | 1 | Seal |
| 4. | G10726 | 1 | Slotted Hex Nut, 2"-12 |
| 5. | G10471 | 1 | Cotter Pin, $\frac{3}{8}$ " x 2 $\frac{1}{2}$ " |
| 6. | G10198 | 1 | Washer, 2" |
| 7. | GA0530 | 1 | Bearing, Outer |
| 8. | G10625 | 10 | Flange Nut, $\frac{3}{4}$ "-16 |
| 9. | GA0529 | 1 | Hub W/Cups And Stud Bolts |
| | GR0192 | 1 | Cup, Outer |
| | GR0191 | 1 | Cup, Inner |
| | GR0257 | 10 | Stud Bolt, $\frac{3}{4}$ "-16 x 2 $\frac{1}{2}$ " |
| 10. | GA0531 | 1 | Bearing, Inner |
| 11. | GA0532 | 1 | Seal |
| 12. | GD1527 | 1 | Valve Stem (Includes Core And Cap) |
| 13. | GD1528 | 1 | Nut, Nylon |
| 14. | GD2411 | 1 | Plug, Rubber (Not Shown) |
| 15. | GA0445 | 1 | Wheel, 27" x 32", 10 Bolt-Used On 800, Optional 1200 |
| | GA0446 | 1 | Wheel, 21" x 32", 10 Bolt-Used On 600HD/1200, Optional 800 |
| 16. | * | 1 | Tube, 30.5" x 32" - Used On 800, Optional 1200 |
| | * | 1 | Tube, 24.5" x 32" - Used On 600HD/1200, Optional 800 |
| 17. | * | - | Tire, 30.5" x 32", 12 Ply-Used On 800 |
| | * | - | Tire, 24.5" x 32", 12 Ply-Used On 600HD |
| | * | - | Tire, 24.5" x 32", 16 Ply-Used On 1200, Optional 800 |
| | * | - | Tire, 30.5 x 32", 16 Ply-Optional 1200 |

* See tire manufacturer.

JACK ASSEMBLY

(WGN118)

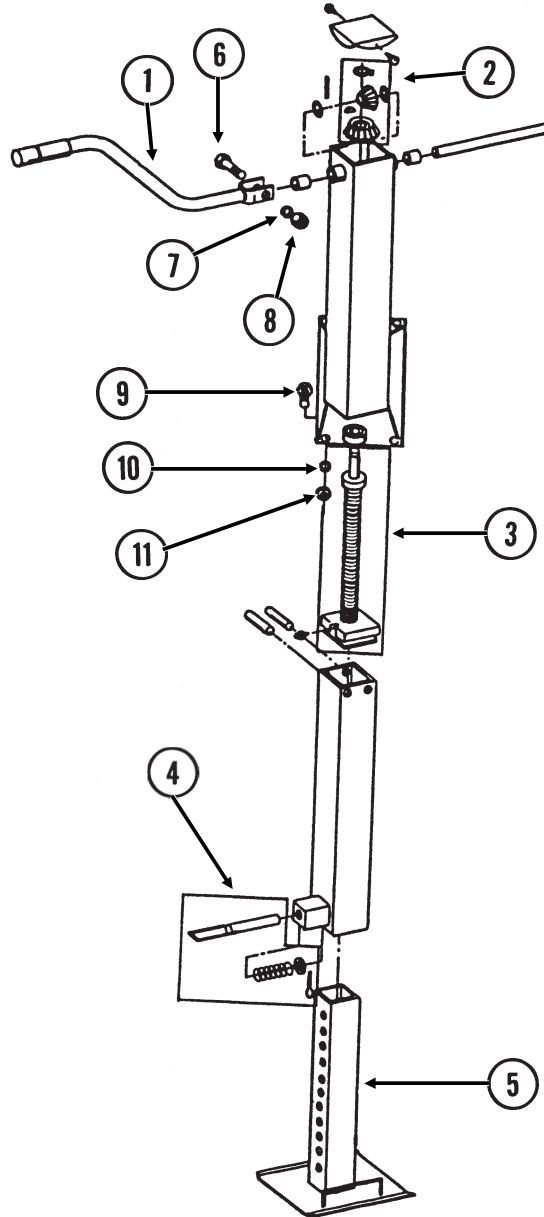


| ITEM | PART NO. | QTY. | DESCRIPTION |
|------|----------|------|--|
| 1. | GR0688 | 1 | Tube Assembly, Lower |
| 2. | GR0689 | 1 | Nut and Screw Assembly |
| 3. | GR0690 | 2 | Pins, Retaining |
| 4. | GR0691 | 1 | Bearing, Thrust |
| 5. | GR0692 | 1 | Machine Washer, 1" x 2" x 18 Ga. |
| 6. | GR0693 | 1 | Horizontal Gear, 18 Tooth |
| 7. | GR0702 | 1 | Retaining Washer, 1/2" |
| 8. | GR0694 | 1 | Key |
| 9. | GR0703 | 1 | Hex Head Cap Screw |
| 10. | GD1350 | 1 | Handle |
| 11. | GR0696 | 1 | Shaft, Horizontal |
| 12. | GR0704 | 1 | Snap Ring |
| 13. | GR0697 | 1 | Key |
| 14. | G10005 | 2 | Hex Head Cap Screw, 5/8"-11 x 1 3/4" |
| | G10230 | 1 | Lock Washer, 5/8" |
| | G10104 | 1 | Hex Nut, 5/8"-11 |
| 15. | GR0698 | 1 | Vertical Gear, 12 Tooth |
| 16. | GR0699 | 1 | Seal, Lid |
| 17. | GR0700 | 1 | Lid |
| 18. | GR0701 | 1 | Screw, Lid Retaining |
| 19. | G10049 | 1 | Hex Head Cap Screw, 3/8"-16 x 2 1/2" |
| | G10210 | 1 | Washer, 3/8" USS |
| | G10108 | 1 | Lock Nut, 3/8"-16 |
| A. | GR0449 | - | HD Jack Update Kit W/Mounting Plate And Jack Handle Clip |

Identified as Thurston.

JACK ASSEMBLY

(WGN111)

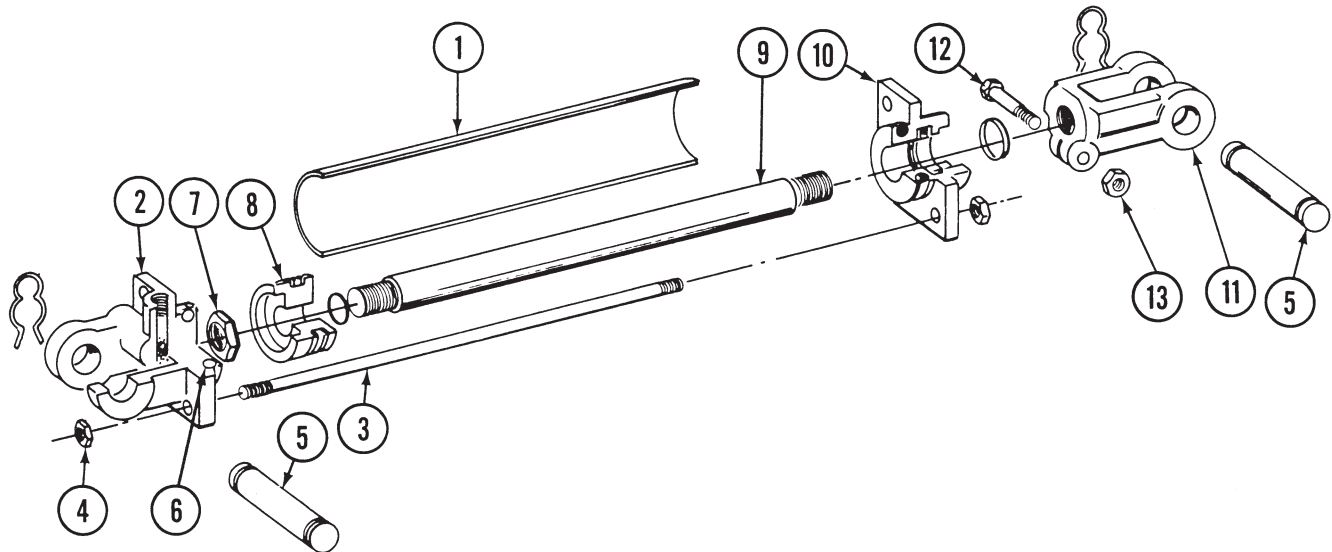


| ITEM | PART NO. | QTY. | DESCRIPTION |
|------|----------|------|--|
| 1. | GD1350 | 1 | Handle |
| 2. | GR0261 | 1 | Gear Kit |
| 3. | GR0262 | 1 | Screw Replacement Kit |
| 4. | GR0260 | 1 | Plunger Kit |
| 5. | GR0263 | 1 | Drop Leg Assembly |
| 6. | G10061 | 1 | Hex Head Cap Screw, $\frac{3}{8}$ "-16 x 3 $\frac{1}{2}$ " |
| 7. | G10210 | 1 | Flat Washer, $\frac{3}{8}$ " USS |
| 8. | G10108 | 1 | Lock Nut, $\frac{3}{8}$ "-16" |
| 9. | G10005 | 2 | Hex Head Cap Screw, $\frac{5}{8}$ "-11 x 1 $\frac{3}{4}$ " |
| 10. | G10230 | 1 | Lock Washer, $\frac{5}{8}$ " |
| 11. | G10104 | 1 | Hex Nut, $\frac{5}{8}$ "-11 |

Identified as Crown.

GRAIN FLOW CONTROL GATE CYLINDER

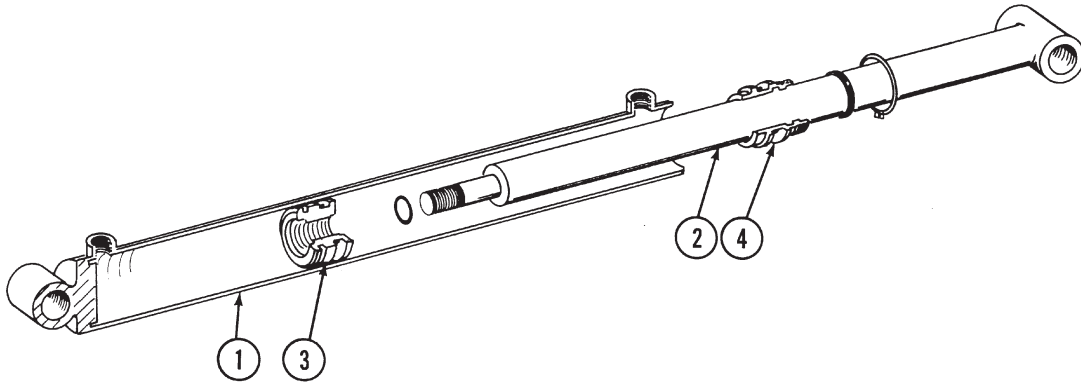
(CYL46)



| ITEM | PART NO. | QTY. | DESCRIPTION |
|------|----------|------|--|
| 1. | | 1 | Cylinder Wall (Sub. GA4255 Cylinder Complete) |
| 2. | GR0167 | 1 | Clevis, Bottom |
| 3. | GR0168 | 1 | Tie Rod |
| 4. | GR0171 | 2 | Hex Nut, $\frac{7}{16}$ "-14 |
| 5. | GR0180 | 2 | Clevis Pin, W/Hair Pin Clip |
| | GR0193 | 1 | Hair Pin Clip |
| 6. | G10170 | 1 | Pipe Plug, $\frac{1}{2}$ " |
| 7. | GR0170 | 1 | Jam Nut, Hex, $\frac{7}{8}$ "-14 NF |
| 8. | GR0166 | 1 | Piston |
| 9. | | 1 | Piston Rod (Sub. GA4255 Cylinder Complete) |
| 10. | GR0165 | 1 | Piston Rod Guide |
| 11. | GR0456 | 1 | Clevis, Piston Rod |
| 12. | G10047 | 1 | Hex Head Cap Screw, $\frac{3}{8}$ "-16 x $1 \frac{3}{4}$ " |
| 13. | G10101 | 1 | Hex Nut, $\frac{3}{8}$ "-16 |
| A. | A0281 | - | Cylinder, Complete, $2 \frac{1}{2}$ " x 10" (Sub. GA4255) |
| B. | GR0156 | - | Seal Kit, Includes: (5)O-Rings, (3)BU Washers, (1)Rod Wiper |

VERTICAL AUGER FOLD CYLINDER

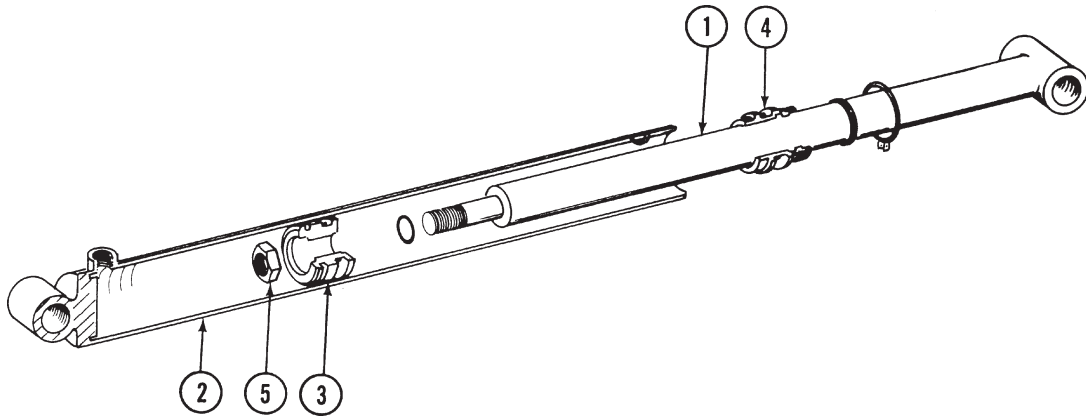
(CYL47)



| ITEM | PART NO. | QTY. | DESCRIPTION |
|------|----------|------|---|
| 1. | | 1 | Tube Assembly (Sub. GA3667 Cylinder Complete) |
| 2. | GR0113 | 1 | Shaft Assembly |
| 3. | GR0115 | 1 | Piston |
| 4. | GR0371 | 1 | Head Gland |
| A. | A0234 | - | Cylinder, Complete, 3 1/2" x 20" (Sub. GA3667) |
| B. | GR0116 | - | Seal Kit, Includes: (4)O-Rings, (4)BU Rings, (1)Wiper, (1)Snap Ring |

VERTICAL AUGER FOLD CYLINDER

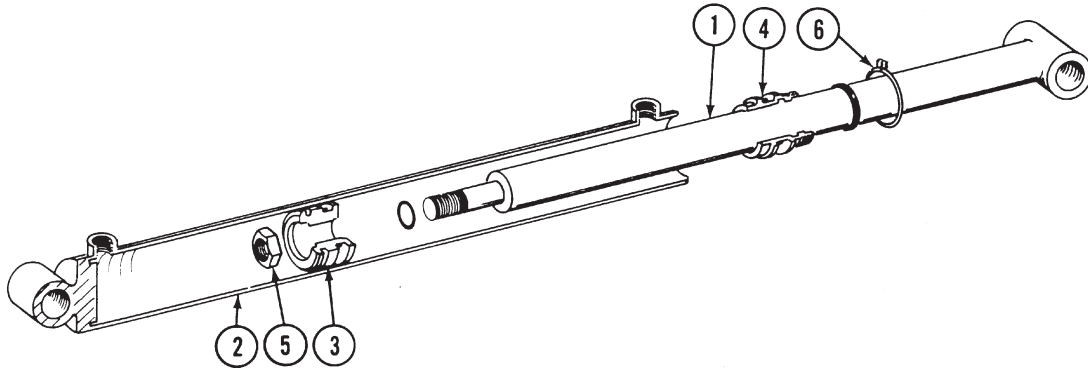
(CYL48)



| ITEM | PART NO. | QTY. | DESCRIPTION |
|------|----------|------|---|
| 1. | | 1 | Rod (Sub. GA3667 Cylinder Complete) |
| 2. | | 1 | Barrel (Sub. GA3667 Cylinder Complete) |
| 3. | GR0310 | 1 | Piston |
| 4. | GR0311 | 1 | Gland |
| 5. | GR0312 | 1 | Lock Nut |
| A. | A0698 | - | Cylinder, 3 1/2" X 20" (Sub. GA3667) |
| B. | GR0313 | - | Seal Kit, Includes: (4)O-Ring, (4)Backup Ring, (1)Wiper, (1)Piston Ring, (1)Snap Ring |

VERTICAL AUGER FOLD CYLINDER

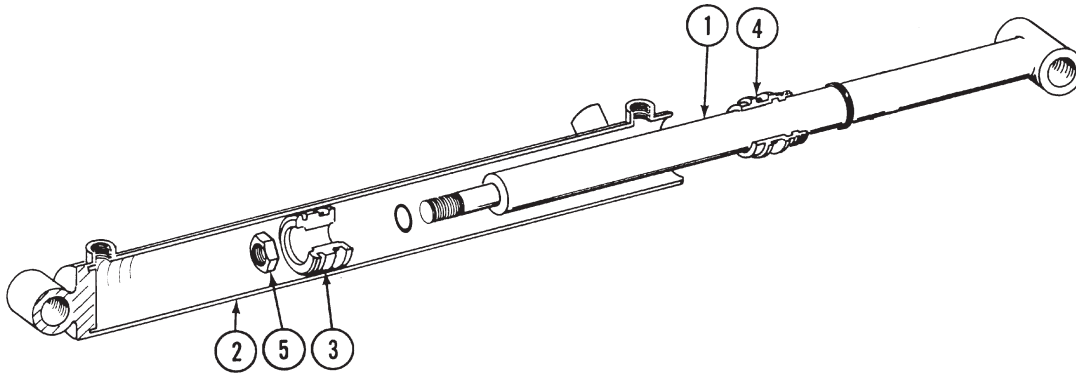
(CYL49)



| ITEM | PART NO. | QTY. | DESCRIPTION |
|------|----------|------|---|
| 1. | GA0781 | 1 | Rod |
| 2. | | 1 | Barrel (Sub. GA3667) |
| 3. | GR0320 | 1 | Piston |
| 4. | GR0321 | 1 | Gland |
| 5. | GR0312 | 1 | Nut |
| 6. | G10136 | 1 | Snap Ring |
| A. | A0701 | - | Cylinder, 3" x 20" (Sub. GA3667) |
| B. | GR0318 | - | Seal Kit Includes: (4)O-Rings, (4)Backup Ring, (1)Wiper, (1)Wear Ring |

VERTICAL AUGER FOLD CYLINDER

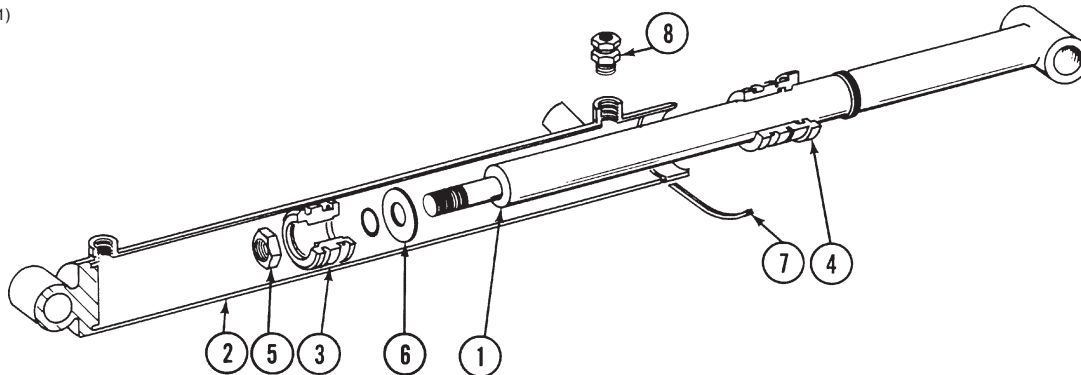
(CYL50)



| ITEM | PART NO. | QTY. | DESCRIPTION |
|------|----------|------|--|
| 1. | GA0781 | 1 | Rod |
| 2. | GR0314 | 1 | Barrel |
| 3. | GR0316 | 1 | Piston |
| 4. | GR0317 | 1 | Gland |
| 5. | GR0312 | 1 | Lock Nut |
| A. | A0702 | - | Cylinder, 3" x 20" (Sub. GA3667) |
| B. | GR0318 | - | Seal Kit Includes: (4)O-Rings, (4)Backup Rings, (1)Wiper, (1)Wear Ring |

VERTICAL AUGER FOLD CYLINDER

(CYL51)

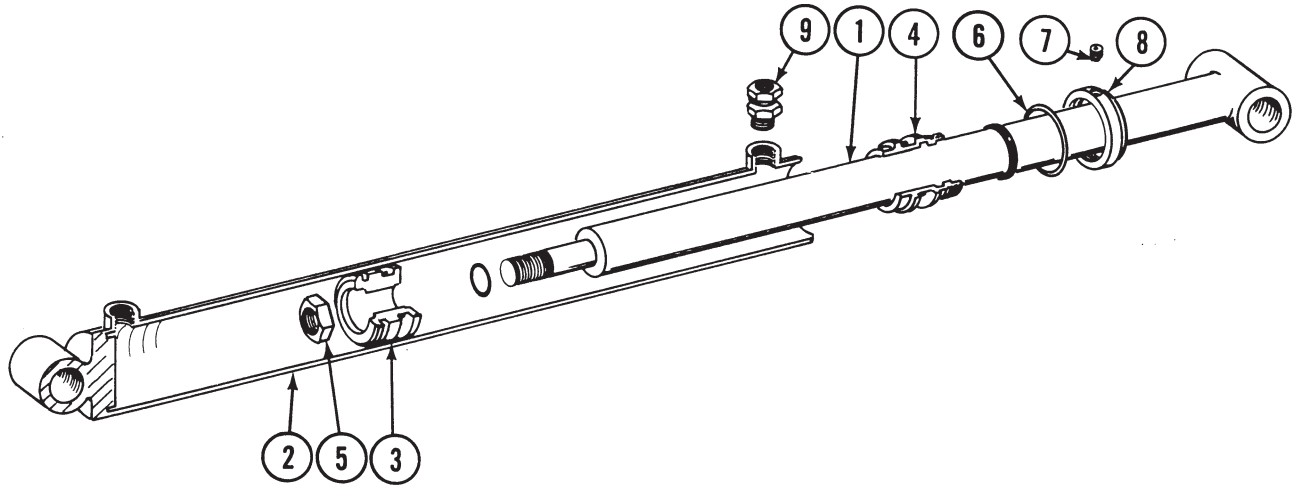


| ITEM | PART NO. | QTY. | DESCRIPTION |
|------|----------|------|--|
| 1. | GR0610 | 1 | Rod |
| 2. | | 1 | Barrel (Sub. GA3667 Cylinder Complete) |
| 3. | | 1 | Piston |
| 4. | GR0402 | 1 | Gland |
| 5. | G10869 | 1 | Hex Nut, 7/8"-14 |
| 6. | | 1 | Spacer (Sub. GA3667 Cylinder Complete) |
| 7. | GR0611 | 1 | Retaining Ring |
| 8. | GD2960 | 1 | Orifice, Flow Restrictor |
| A. | *A2282 | - | Cylinder, Less Orifice, 2 1/2" x 20" (Sub. GA3667) |
| B. | GR0614 | - | Seal Kit Includes: (4)O-Rings, (4)Backup Rings, (1)Wiper, (1)Wear Ring |

* To Identify - DN 13130 On Barrel

VERTICAL AUGER FOLD CYLINDER

(CYL52)



| ITEM | PART NO. | QTY. | DESCRIPTION |
|------|----------|------|--|
| 1. | | 1 | Rod (Sub. GA3667 Cylinder Complete) |
| 2. | | 1 | Barrel (Sub. GA3667 Cylinder Complete) |
| 3. | | 1 | Piston (Sub. GA3667 Cylinder Complete) |
| 4. | | 1 | Gland (Sub. GA3667 Cylinder Complete) |
| 5. | GR0138 | 1 | Nut, 7/8"-14 |
| 6. | | 1 | Retaining Wire (Sub. GA3667 Cylinder Complete) |
| 7. | G10114 | 1 | Set Screw, No. 10-32 |
| 8. | GR0619 | 1 | Retaining Nut (Sub. GA3667 Cylinder Complete) |
| 9. | GD2960 | 1 | Orifice, Flow Restrictor |
| A. | *A2283 | | Cylinder, Less Orifice, 2 1/2" x 20" (Sub. GA3667) |
| B. | GR0614 | | Seal Kit Includes: (4)O-Rings, (4)Backup Rings, (1)Wiper, (1)Waer Ring |

* To Identify - DN13129 On Barrel

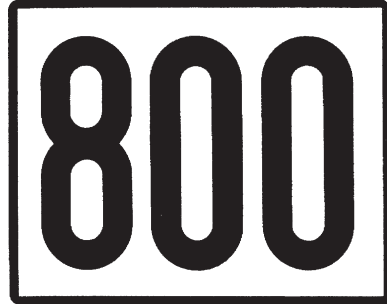
DECALS, REFLECTORS AND TIE STRAPS



1



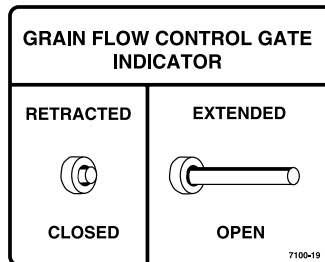
2



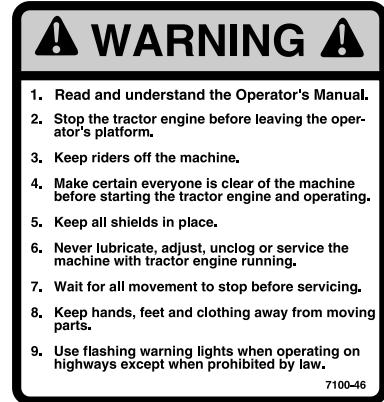
3



4



5



7



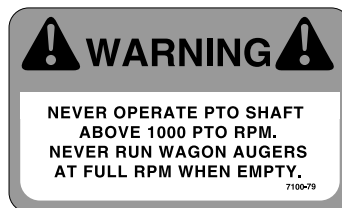
6



8



9



10



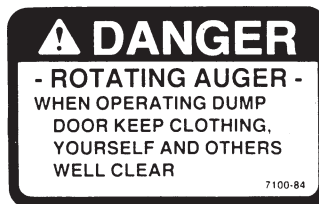
11



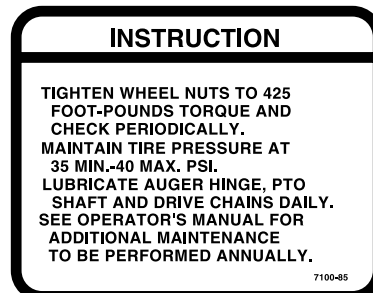
12



13



14



15

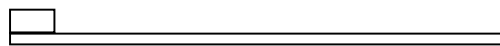
DECALS, REFLECTORS AND TIE STRAPS



16



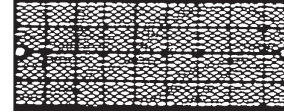
17



19



18



20



21

| ITEM | PART NO. | QTY. | DESCRIPTION |
|------|-----------|------|--------------------------------|
| 1. | G7100-07 | 1 | Decal, "KINZE®", 20" x 22" |
| 2. | G7100-08 | 1 | Decal, 600 |
| 3. | G7100-09 | 1 | Decal, 800 |
| 4. | G7100-18 | 1 | Decal, 1200 |
| 5. | G7100-19 | 1 | Decal, Grain Flow Indicator |
| 6. | G7100-20 | 1 | Decal, Heavy Duty |
| 7. | G7100-46 | 1 | Decal, Warning |
| 8. | G7100-56 | 1 | Decal, Warning |
| 9. | G7100-67 | 1 | Decal, Danger |
| 10. | G7100-79 | 1 | Decal, Warning |
| 11. | G7100-80 | 2 | Decal, Warning |
| 12. | G7100-81 | 1 | Decal, Danger |
| 13. | G7100-82 | 1 | Decal, Danger |
| 14. | G7100-84 | 1 | Decal, Danger |
| 15. | G7100-85 | 1 | Decal, Instruction |
| 16. | G7100-86 | 1 | Decal, Danger |
| 17. | G7100-90 | 1 | Decal, Warning |
| 18. | G7100-93 | - | White Striping, 3" x 100 Yards |
| | GR1172-01 | - | White Striping, Per Foot |
| 19. | GD2117 | - | Tie Strap, 14 1/2" |
| 20. | G7200-03 | 4 | Reflector, Red |
| | G7200-04 | 2 | Reflector, Amber |
| 21. | GR0155 | - | Blue Paint, Aerosol |

NOTES

NUMERICAL INDEX

| Part No. | Page | Part No. | Page | Part No. | Page |
|----------|---|----------|---|-------------|--------------|
| A1014 | P7 | G10114 | P37 | G10869 | P36 |
| A1015 | P7 | G10115 | P17, P18 | G1K135 | P21 |
| A1016 | P22, P23 | G10116 | P7 | G1K156 | P10 |
| A1017 | P22, P23 | G10117 | P27 | G1K166 | P9 |
| A2282 | P36 | G10118 | P27 | G1K167 | P9 |
| A2283 | P37 | G10119 | P27 | G1K201 | P7 |
| A0234 | P7, P33 | G10120 | P20 | G1K277 | P8 |
| A0281 | P22, P23, P32 | G10123 | P11 | G2501-08-08 | P7, P22, P23 |
| A0698 | P7, P34 | G10124 | P11 | G3301-47 | P15 |
| A0701 | P7, P35 | G10125 | P9, P16, P17 | G3301-65 | P13 |
| A0702 | P7, P36 | G10126 | P17 | G5503-02-02 | P16 |
| A2282 | P7 | G10127 | P17 | G7100-07 | P39 |
| A2283 | P7 | G10132 | P16 | G7100-08 | P39 |
| G10001 | P8, P10, P22, P23, P24, P25 | G10133 | P2, P4 | G7100-09 | P39 |
| G10004 | P13, P15, P18, P23 | G10134 | P2, P4 | G7100-110 | P9 |
| G10005 | P30, P31 | G10135 | P11 | G7100-111 | P9 |
| G10007 | P7 | G10136 | P35 | G7100-18 | P39 |
| G10008 | P13 | G10142 | P11 | G7100-19 | P39 |
| G10009 | P15 | G10170 | P32 | G7100-20 | P39 |
| G10011 | P7, P13 | G10185 | P19 | G7100-46 | P39 |
| G10016 | P16 | G10198 | P29 | G7100-56 | P39 |
| G10017 | P7, P16, P24, P25 | G10210 | P30, P31 | G7100-67 | P39 |
| G10019 | P9 | G10216 | P7, P22, P23, P25 | G7100-79 | P39 |
| G10025 | P7, P23 | G10218 | P7, P21 | G7100-80 | P39 |
| G10027 | P26 | G10219 | P9 | G7100-81 | P39 |
| G10029 | P13, P15, P23 | G10228 | P7, P11, P16, P17, P18, P20, P21, P24, P25 | G7100-82 | P39 |
| G10036 | P15, P17, P20 | G10229 | P7, P8, P10, P18, P22, P24, P25 | G7100-84 | P39 |
| G10037 | P11, P18 | G10230 | P7, P13, P15, P17, P19, P30, P31 | G7100-85 | P39 |
| G10038 | P21 | G10231 | P7, P13, P15, P23, P26 | G7100-86 | P39 |
| G10039 | P17 | G10232 | P9 | G7100-90 | P39 |
| G10047 | P32 | G10266 | P10 | G7100-93 | P39 |
| G10049 | P3, P5, P30 | G10269 | P10 | G7200-03 | P39 |
| G10053 | P7 | G10289 | P10 | G7200-04 | P39 |
| G10054 | P29 | G10318 | P16, P18, P19 | GA0422 | P7 |
| G10055 | P13 | G10326 | P3, P5 | GA0423 | P7 |
| G10056 | P21, P22 | G10423 | P9 | GA0424 | P13, P15 |
| G10061 | P31 | G10426 | P9 | GA0425 | P7 |
| G10068 | P8 | G10434 | P9 | GA0426 | P7 |
| G10080 | P8, P13, P15, P19 | G10443 | P9 | GA0429 | P17 |
| G10101 | P7, P8, P10, P18, P22, P23, P24, P25, P32 | G10456 | P2, P4 | GA0431 | P25 |
| G10102 | P7, P16, P17, P18, P20, P21, P22, P23, P24, P25 | G10460 | P7, P8 | GA0435 | P24, P25 |
| G10104 | P7, P13, P15, P17, P19, P30, P31 | G10471 | P29 | GA0436 | P24 |
| G10105 | P7, P13, P15, P21, P22, P23, P26 | G10525 | P10 | GA0437 | P24 |
| G10106 | P9 | G10563 | P2, P4 | GA0439 | P24 |
| G10107 | P7, P8, P13, P15, P16, P18, P19, P20 | G10610 | P7 | GA0444 | P29 |
| G10108 | P3, P5, P30, P31 | G10625 | P29 | GA0445 | P29 |
| G10109 | P2, P4 | G10641 | P7, P8, P9, P13, P15, P16, P17, P18, P19, P20 | GA0446 | P29 |
| G10112 | P8 | G10700 | P2, P3, P4, P5 | GA0447 | P13, P15 |
| | | G10726 | P29 | GA0448 | P8, P13 |
| | | G10749 | P11 | GA0449 | P15, P19 |
| | | | | GA0450 | P20 |
| | | | | GA0451 | P17, P18 |
| | | | | GA0452 | P7 |
| | | | | GA0504 | P9, P16, P17 |
| | | | | GA0511 | P7 |

NUMERICAL INDEX

| Part No. | Page | Part No. | Page | Part No. | Page |
|----------|--------------------------|-----------|---------------|----------|---------------|
| GA0517 | P16 | GD1435 | P15 | GR0243 | P2, P4 |
| GA0529 | P29 | GD1512 | P10 | GR0244 | P2, P4 |
| GA0530 | P29 | GD1527 | P29 | GR0245 | P2 |
| GA0531 | P29 | GD1528 | P29 | GR0246 | P2, P4 |
| GA0532 | P29 | GD1541 | P21 | GR0248 | P2, P4 |
| GA0593 | P13, P15 | GD1547 | P21 | GR0249 | P2, P4 |
| GA0624 | P11, P13, P15 | GD1555 | P7 | GR0251 | P2, P4 |
| GA0654 | P24 | GD1581 | P18 | GR0252 | P2, P4 |
| GA0685 | P16 | GD2117 | P39 | GR0253 | P2 |
| GA0686 | P22, P23 | GD2411 | P29 | GR0254 | P2 |
| GA0687 | P23 | GD2456 | P8 | GR0257 | P29 |
| GA0688 | P23 | GD2631 | P20 | GR0258 | P13 |
| GA0689 | P22, P23 | GD2951 | P13, P15 | GR0259 | P13, P15 |
| GA0690 | P23 | GD2960 | P36, P37 | GR0260 | P31 |
| GA0695 | P23 | GD3246 | P20 | GR0261 | P31 |
| GA0696 | P23 | GD4008 | P13 | GR0262 | P31 |
| GA0699 | P11 | GD4010 | P16, P17, P18 | GR0263 | P31 |
| GA0781 | P35, P36 | GD4012 | P7 | GR0264 | P8, P13 |
| GA0790 | P18 | GD4014 | P7 | GR0265 | P15, P19 |
| GA0794 | P25 | GD4016 | P15 | GR0266 | P20 |
| GA0795 | P25 | GD4017 | P13 | GR0285 | P2 |
| GA0796 | P25 | GD4056 | P8 | GR0286 | P2 |
| GA0798 | P25 | GD4061 | P23 | GR0287 | P2 |
| GA0799 | P25 | GD4072 | P8 | GR0288 | P2 |
| GA0801 | P25 | GD4077 | P13, P15 | GR0289 | P4 |
| GA0804 | P22 | GD4079 | P13, P15 | GR0290 | P4 |
| GA0805 | P22 | GD4086 | P7, P22, P23 | GR0291 | P11 |
| GA0807 | P22 | GD4123 | P15 | GR0292 | P11 |
| GA1606 | P27 | GD6270 | P9 | GR0293 | P11 |
| GA1613 | P8 | GD6273 | P10 | GR0294 | P11 |
| GA4108 | P9 | GD6279-01 | P9 | GR0295 | P11 |
| GA4110 | P9 | GD6291 | P10 | GR0296 | P11 |
| GA4111 | P9 | GR0113 | P33 | GR0297 | P11 |
| GA4112 | P9, P10 | GR0115 | P33 | GR0298 | P11 |
| GA4123 | P10 | GR0116 | P33 | GR0299 | P11 |
| GA4127 | P10 | GR0138 | P37 | GR0300 | P11 |
| GA4128 | P10 | GR0155 | P39 | GR0301 | P11 |
| GA4137 | P26 | GR0156 | P32 | GR0302 | P11 |
| GA4138 | P26 | GR0165 | P32 | GR0303 | P11 |
| GA4531 | P19 | GR0166 | P32 | GR0304 | P11 |
| GA4537 | P19, P20 | GR0167 | P32 | GR0305 | P11 |
| GA4538 | P8 | GR0168 | P32 | GR0306 | P11 |
| GA4539 | P7 | GR0170 | P32 | GR0307 | P11 |
| GA4540 | P18 | GR0171 | P32 | GR0310 | P34 |
| GD0144 | P2, P3, P4, P5, P13, P15 | GR0180 | P32 | GR0311 | P34 |
| GD0275 | P7 | GR0191 | P29 | GR0312 | P34, P35, P36 |
| GD0327 | P24, P25 | GR0192 | P29 | GR0313 | P34 |
| GD0653 | P7, P8 | GR0193 | P32 | GR0314 | P36 |
| GD1346 | P15 | GR0198 | P13, P15 | GR0316 | P36 |
| GD1347 | P19 | GR0206 | P13, P15 | GR0317 | P36 |
| GD1350 | P30, P31 | GR0237 | P2, P4 | GR0318 | P35, P36 |
| GD1357 | P13, P15 | GR0238 | P2, P4 | GR0320 | P35 |
| GD1358 | P13 | GR0239 | P2, P4 | GR0321 | P35 |
| GD1359 | P29 | GR0240 | P2, P4 | GR0371 | P33 |
| GD1360 | P29 | GR0241 | P2, P4 | GR0402 | P36 |

NUMERICAL INDEX

| Part No. | Page | Part No. | Page | Part No. | Page |
|-----------|----------|----------|------|----------|------|
| GR0449 | P30 | | | | |
| GR0456 | P32 | | | | |
| GR0610 | P36 | | | | |
| GR0611 | P36 | | | | |
| GR0614 | P36, P37 | | | | |
| GR0619 | P37 | | | | |
| GR0688 | P30 | | | | |
| GR0689 | P30 | | | | |
| GR0690 | P30 | | | | |
| GR0691 | P30 | | | | |
| GR0692 | P30 | | | | |
| GR0693 | P30 | | | | |
| GR0694 | P30 | | | | |
| GR0696 | P30 | | | | |
| GR0697 | P30 | | | | |
| GR0698 | P30 | | | | |
| GR0699 | P30 | | | | |
| GR0700 | P30 | | | | |
| GR0701 | P30 | | | | |
| GR0702 | P30 | | | | |
| GR0703 | P30 | | | | |
| GR0704 | P30 | | | | |
| GR0968 | P10 | | | | |
| GR0969 | P10 | | | | |
| GR0970 | P10 | | | | |
| GR0971 | P10 | | | | |
| GR0972 | P10 | | | | |
| GR1172-01 | P39 | | | | |
| GR1209 | P3 | | | | |
| GR1210 | P3, P5 | | | | |
| GR1211 | P3, P5 | | | | |
| GR1212 | P3, P5 | | | | |
| GR1213 | P3, P5 | | | | |
| GR1214 | P3, P5 | | | | |
| GR1215 | P3, P5 | | | | |
| GR1216 | P3, P5 | | | | |
| GR1217 | P3, P5 | | | | |
| GR1218 | P3, P5 | | | | |
| GR1219 | P3, P5 | | | | |
| GR1220 | P3, P5 | | | | |
| GR1221 | P3, P5 | | | | |
| GR1222 | P3, P5 | | | | |
| GR1223 | P5 | | | | |
| GR1224 | P3, P5 | | | | |
| GR1225 | P3 | | | | |
| GR1226 | P5 | | | | |
| GR1232 | P4 | | | | |
| GR1245 | P3 | | | | |
| GR1246 | P5 | | | | |
| GR1300 | P3, P5 | | | | |
| GR1430 | P3, P5 | | | | |
| GR1438 | P3, P5 | | | | |