

MODEL 500/1000/1000HD/1600 SPRA-KARTS

**OPERATOR & PARTS
MANUAL**

M0130


7/86

This page left blank intentionally.

TO THE OWNER


We at Kinze Manufacturing wish to thank you for your patronage and appreciate your confidence in Kinze farm machinery. Your Kinze Spra-Kart has been carefully designed and sturdily built to provide years of dependable operation in return for your investment.

This manual has been prepared to aid you in the operation and maintenance of the Spra-Kart. Do not use or operate this equipment until this manual has been read and understood.

Throughout this manual the symbol  and the words **Note**, **Caution** and **Warning** are used to call your attention to important safety information. The definition of each of these terms used follows:

NOTE: Indicates a special point of information.

CAUTION: Indicates that a failure to observe can cause damage to the machine or equipment.

 **WARNING:** Indicates that a failure to observe can cause damage to equipment and/or personal injury.

This manual is applicable to: Model SK 500, Serial Number 37001 and up.
Model SK 1000, Serial Number 38001 and up.
Model SK 1000HD, Serial Number 39001 and up.
Model SK 1600, Serial Number 39301 and up.

Record the model number and serial number of your Spra-Kart with date purchased below:

Date Purchased _____

Serial Number _____

Model Number _____

TABLE OF CONTENTS

Introduction	
General Information.....	1-1
Serial Number.....	1-1
New Machine Warranty.....	1-1
Safety Precautions.....	2-1
Operation.....	2-1
Maintenance	
Preparation For Use.....	3-1
Tire Pressure.....	3-1
Wheel Nuts.....	3-1
Wheel Bearings.....	3-1
Wheel Bearing Replacement.....	3-1
Preparation For Storage.....	3-1
Parts List Index.....	P1
Numerical Index.....	a

INTRODUCTION

GENERAL INFORMATION

The information and photos used in this manual were current at the time of printing. However, due to KINZE's continual attempt to improve its product, possible in-line production changes may cause your machine to appear slightly different in detail. KINZE Manufacturing reserves the right to change specifications or design without notice and without incurring obligation to install the same on machines previously manufactured.

Right hand and left hand as used throughout this manual is determined by facing in the direction the machine will travel when in use.

SERIAL NUMBER

The serial number provides important information about your Spra-Kart and may be required to obtain the correct replacement part.

The serial number plate is located on the front right hand corner of the Spra-Kart frame. It is suggested that the serial number also be recorded in the space provided in the front of this manual. Always provide the serial number and model number when ordering parts from your KINZE dealer or anytime correspondence is made with KINZE Manufacturing.

NOTE: DUE TO THE WIDE VARIATION IN TRACTOR HYDRAULIC SYSTEMS AND CAPACITIES, CARE SHOULD BE EXERCISED IN SELECTING THE RIGHT PUMP/MOTOR COMBINATION TO USE WITH YOUR TRACTOR'S HYDRAULIC SYSTEM. CONSULT THE PUMP MANUFACTURER'S GUIDE FOR THIS INFORMATION.

NEW MACHINE WARRANTY

No warranties express or implied are made or will be deemed to have been made by Kinze of the products sold under this Agreement except as follows:

Kinze warrants to the original purchaser for use that if any part of the product proves to be defective in material or workmanship within one year from date of original purchase, and is reported to Kinze within 10 days after such defect is discovered, Kinze will (at our option) either replace or repair said part. Return of the defective part to Kinze and submission of a completed warranty request must be accomplished within 30 days of the date that the replacement is made available.

This warranty does not apply to damage resulting from misuse, neglect, accident or improper installation or maintenance. A part will not be considered defective if it substantially fulfills performance specifications. Labor, shipping, field service, travel or administrative expenses incurred in connection with warranty replacements are not covered. Tires are not warranted by Kinze Manufacturing, Inc. and such claims must be pursued through the manufacturer's warranty.

Kinze warrants all replacement parts for a period of 90 days from date of purchase by the customer. Parts warranty is subject to the same provisions, restrictions and exclusions as new machine warranty and carries the same return and reporting requirements.

The foregoing warranty is exclusive and in lieu of all other warranties of merchantability, fitness for purpose and of any other type, whether express or implied. Kinze neither assumes nor authorizes anyone to assume for it any other obligation or liability other than stated above, and will not be liable for consequential damages. Purchaser accepts these terms and warranty limitations unless the product is returned within the fifteen days for full refund of purchase price.

Kinze reserves the right to make changes or to add improvements at any time without notice or obligations.

ATTENTION: Effective 12/1/87
amendments were made to the
KINZE New Machine Warranty.
Refer to Insert W12187.

SAFETY PRECAUTIONS


Make certain tractor is in safe operating condition with adequate braking capabilities, especially when operating on uneven terrain.

Always use adequate lights or safety warnings when transporting the Spra-Kart on public roads and after dark. Check with local law enforcement agencies for specific requirements.

Limit towing speed to 20 MPH when empty and 10 MPH when loaded.

Never permit any persons other than the operator to ride on the tractor and never permit persons to ride on the Spra-Kart at any time.

Your KINZE Spra-Kart is intended for off road use only. However, if the Spra-Kart is being transported from field to farm on rural roads, make sure all load limits on roads and bridges are observed.

Use only agricultural chemicals and water in the tank.  **WARNING:** Never put flammable materials in the tank.

Agricultural chemicals can be dangerous. Improper selection or use can injure persons, animals, plants, soils, or other property. **BE SAFE:** Handle and apply with care. Follow instructions of the chemical manufacturer.

WARNING

THIS MACHINE HAS BEEN DESIGNED AND BUILT WITH YOUR SAFETY IN MIND. ANY ALTERATION TO THE DESIGN OR CONSTRUCTION MAY CREATE SAFETY HAZARDS. DO NOT MAKE ANY ALTERATIONS OR CHANGES TO THE EQUIPMENT, BUT IF ANY ALTERATIONS OR CHANGES ARE MADE YOU MUST FOLLOW ALL APPROPRIATE SAFETY STANDARDS AND PRACTICES TO PROTECT YOU AND OTHERS NEAR THIS MACHINE FROM INJURY.

WARNING

DO NOT CLIMB INSIDE TANK. IF YOU MUST CLIMB INSIDE TANK FOLLOW CHEMICAL COMPANY SAFETY PRECAUTIONS.

OPERATION

SETTING APPLICATION RATE

Consult sprayer tip manufacturers application chart for proper gauge pressure.

Check hydraulic pump manual for proper pump operation.

Rotate the knob on each of the two gate valves, which are located just above the pump, to the open position by turning the knobs counter clockwise.

Start the pump and check the pressure gauge.

If the pressure is higher than desired, turn the knob on the gate valve located between the pump and the gauge in a clockwise direction until the desired pressure is obtained.

If the pressure is lower than desired, turn the knob on the agitator return line gate valve clockwise until the pressure raises to the desired pressure.

NOTE: In order to maintain proper agitation with some materials it may be necessary to reduce the gallons per minute rate.

NOTE: Actual pressure at the nozzle tip may be lower than at the gauge due to pressure drop in the hosing system. To prevent application miscalculations, make field checks to ensure proper application rate.

MAINTENANCE

PREPARATION FOR USE

NOTE: At the beginning of each season, fill tank with water and check valves and fittings for leaks.

TIRE PRESSURE

Tire pressure should be checked regularly and prior to each use of the Spra-Kart and maintained as follows:

18.4 x 26; 6 Ply	35 PSI
23.1 x 26; 8 Ply	35 PSI
24.5 x 32; 12 Ply	35 PSI
30.5 x 32; 12 Ply	35 PSI

WHEEL NUTS

The wheels are attached to the hubs with the press fit bolts through the hub flanges and wheel nuts. Upon any removal and installation of the wheel, clean the threads with a wire brush and oil lightly to retard corrosion. Tighten wheel nuts to 425 foot pounds torque and check nuts periodically to insure tightness.

WHEEL BEARINGS

Wheel bearings should be repacked with a clean heavy-duty axle grease approximately once a year or at the beginning of each season. Follow the procedure outlined for wheel bearing replacement with the exception that bearings and bearing cups are reused when the wheel bearings are being repacked.

WHEEL BEARING REPLACEMENT

1. Jack tire clear of ground and remove wheel.
2. Remove hub cap attachment bolts and remove cap from wheel hub.
3. Remove cotter pin, axle nut and washer.
4. Slide hub from axle spindle, using a hub puller if necessary.
5. Remove bearing cups from hub and discard. Thoroughly clean wheel hub and dry.
6. Press in new bearing cups with thickest edges facing in.

7. Pack bearing with heavy-duty wheel bearing grease, thoroughly forcing grease between roller cone and bearing cage. Also fill the space between the bearing cups in the hub with grease.
8. Place inner bearing in hub and press in new grease seal with lip pointing towards bearing.
9. Clean axle spindle and install hub.
10. Install outer bearing, washer and slotted hex nut. Tighten slotted hex nut while rotating the hub until there is some drag. This assures that all bearing surfaces are in contact. Back off slotted nut to nearest locking slot and install cotter pin.
11. Fill hub cap half full of wheel bearing grease and install on hub with attachment bolts.
12. Install wheel and remove jack.

PREPARATION FOR STORAGE

Always store the Spra-Kart in a dry sheltered area if possible.

If possible, remove weight from all tires, particularly if the unit is being stored outdoors.

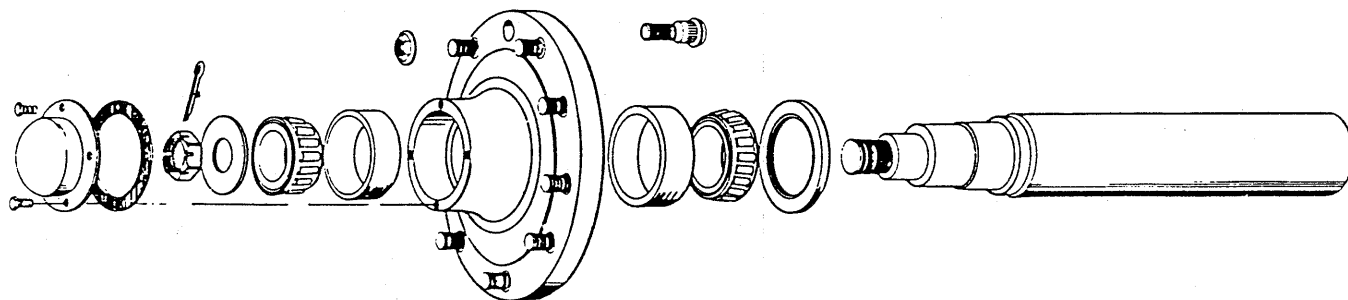
Inspect the Spra-Kart for parts that are in need of replacement and order during the "off" season.

Thoroughly clean Spra-Kart, repaint any areas where paint has been removed.

Open valves, flush tank and lines with clean water.

Drain completely. Remove the bottom pipe plug in the centrifugal pump volute to drain the pump when danger of freezing is present.

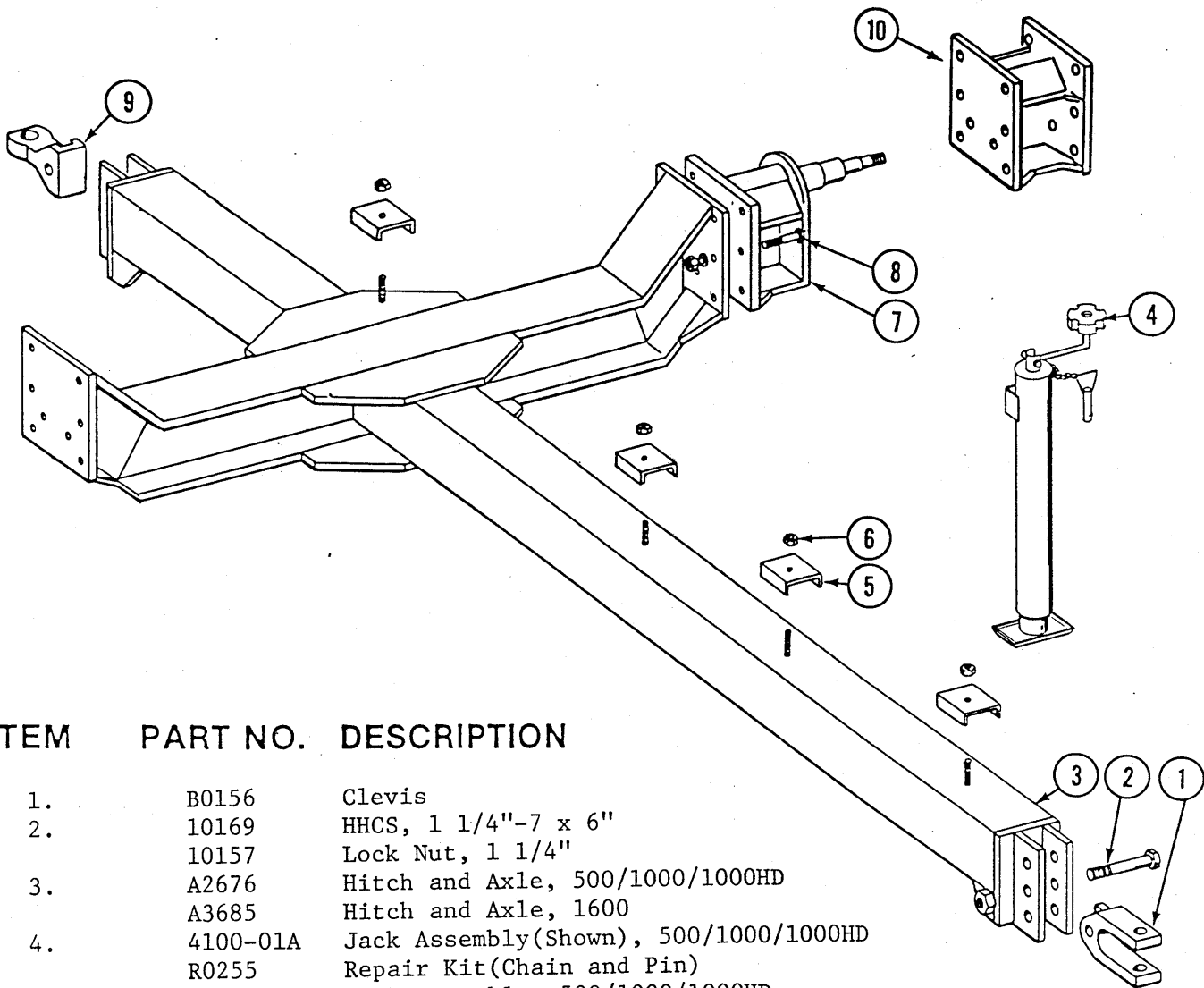
Consult the pump manufacturer's manual for further pump maintenance instructions.



PARTS LIST INDEX

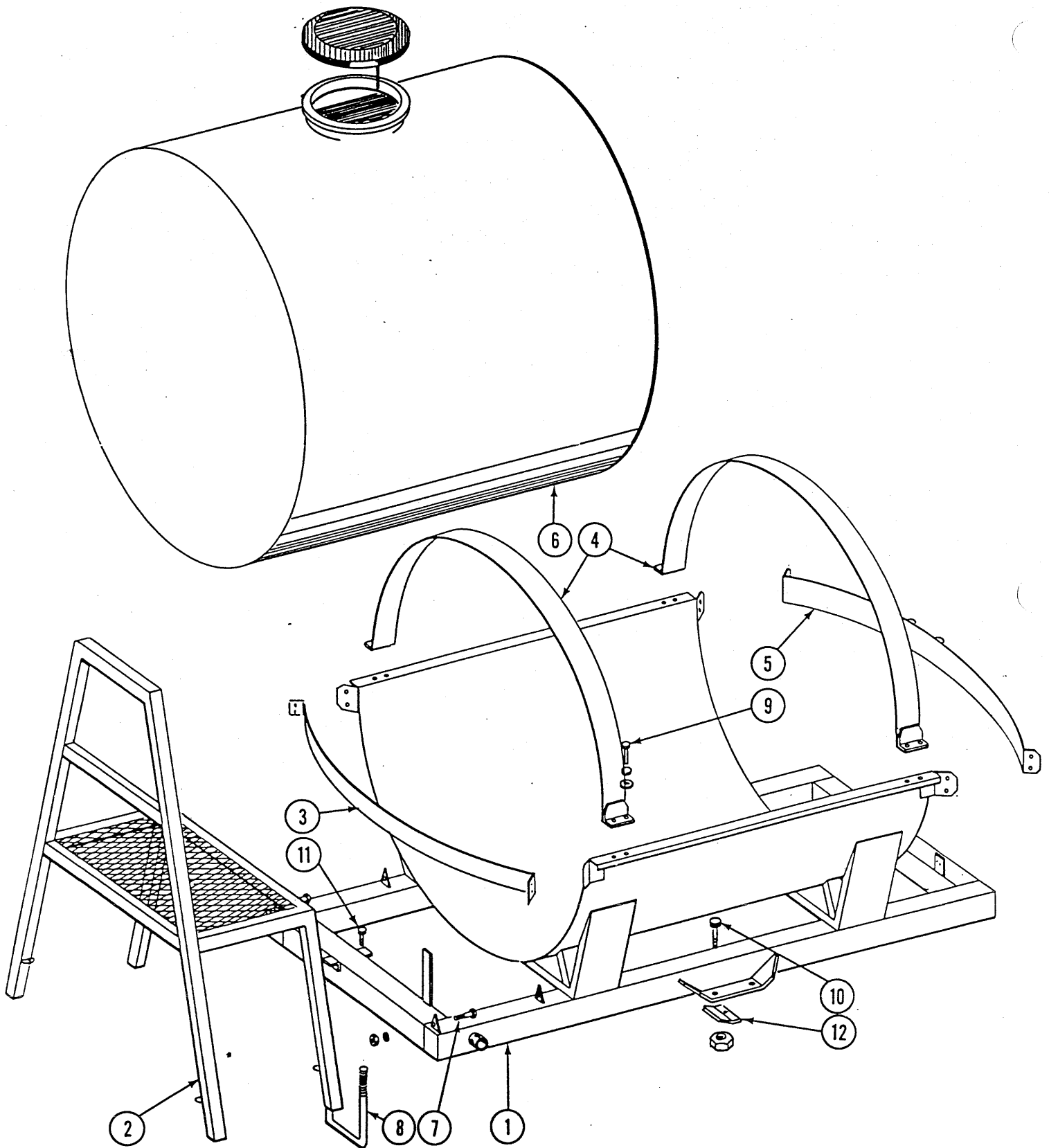
Hitch and Axle Assembly.....	P2
Tank, Saddle and Frame Assembly, 500/1000/1000HD.....	P3-P4
Tank, Saddle and Frame Assembly, 1600.....	P5-P6
Tire and Hub Assembly, 500/1000.....	P7
Tire and Hub Assembly, 1000HD/1600.....	P8
Hoses and Fittings, Front, 500/1000/1000HD.....	P9-P10
Hoses and Fittings, Front, 1600.....	P11-P12
Hoses and Fittings, Rear, 500/1000/1000HD.....	P13
Hoses and Fittings, Rear, 1600.....	P14
Solenoid Valve, 500/1000/1000HD.....	P15
Solenoid Valve, 1600.....	P16
Electrical Assembly.....	P17
Decals, Reflectors and Tie Straps.....	P17

HITCH AND AXLE ASSEMBLY



ITEM	PART NO.	DESCRIPTION
1.	B0156	Clevis
2.	10169	HHCS, 1 1/4"-7 x 6"
	10157	Lock Nut, 1 1/4"
3.	A2676	Hitch and Axle, 500/1000/1000HD
	A3685	Hitch and Axle, 1600
4.	4100-01A	Jack Assembly(Shown), 500/1000/1000HD
	R0255	Repair Kit(Chain and Pin)
	4100-01B	Jack Assembly, 500/1000/1000HD
	R0765	Repair Kit(Pin)
	4100-02	Jack Assembly, 1600
	R0255	Repair Kit(Chain and Pin)
5.	D0740	Hose Clamp, 4"
	D3548	Hose Clamp, 3"
6.	10108	Lock Nut, 3/8"-16
7.	A2669	Spindle and Mount, 500/1000
	A2678	Spindle and Mount, 1000HD/1600
8.	10026	HHCS, 3/4"-10 x 2"
	10027	HHCS, 3/4"-10 x 2 1/2"
	10231	Lock Washer, 3/4"
	10105	Hex Nut, 3/4"-10
9.	D0558	Hitch
10.	A2675	Extension, Axle, 500/1000
	A2684	Extension, Axle, 1000HD
A.	6561X	Extension Package, 500/1000, Includes: (2) A2675, (16) 10026, (16) 10105, (16) 10231
	6562X	Extension Package, 1000HD, Includes: (2)A2684, (16) 10026, (16) 10105, (16) 10231

TANK, SADDLE AND FRAME ASSEMBLY

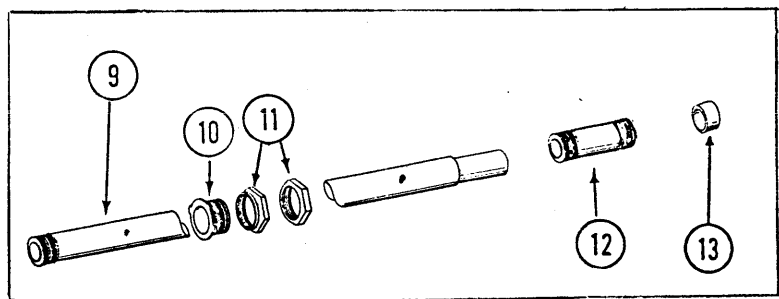
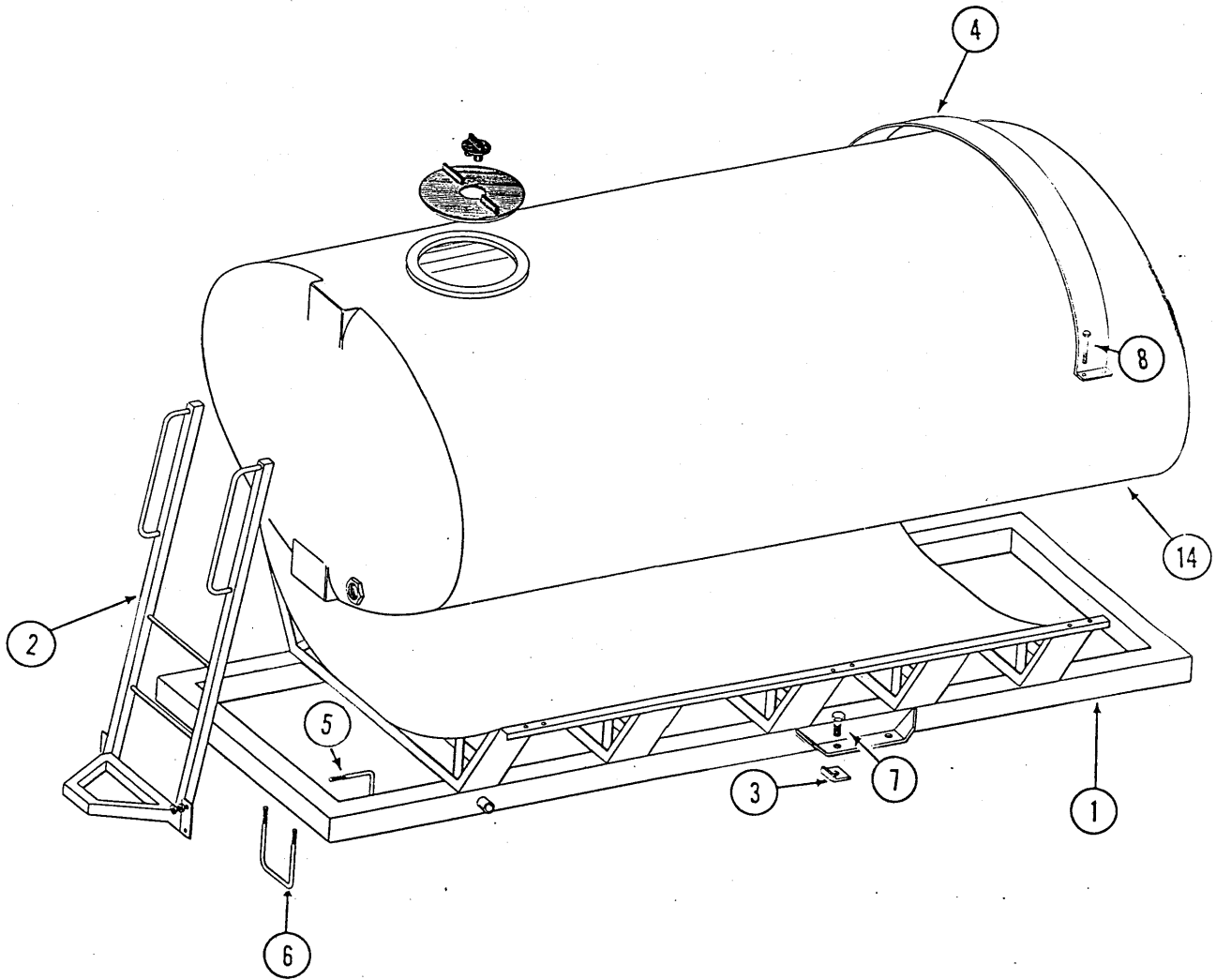


TANK, SADDLE AND FRAME ASSEMBLY

500/1000/1000HD

ITEM	PART NO.	DESCRIPTION	
1.	A2682	Tank Saddle and Frame, 64", 1000/1000HD	
	A2673	Tank Saddle and Frame, 48", 500(Shown)	
2.	A2784	Ladder, 1000/1000HD	
	A2674	Ladder, 500	
3.	A2680	Tank Band, Front, 1000/1000HD	
	A2671	Tank Band, Front, 500	
4.	A2679	Tank Band, Top, 1000/1000HD	
	A2670	Tank Band, Top, 500	
5.	A2681	Tank Band, Rear, 1000/1000HD	
	A2672	Tank Band, Rear, 500	
6.	A2640	Tank with Lid and Fittings, 1000/1000HD	
	A2639	Tank with Lid and Fittings, 500	
	D3756	Lid	
	D3757	Rope	
	D3758	Bulkhead, 2"	
	D3759	Nut, 2"	
	D3760	Gasket, 2"	
	D4898	Slip Ring, Nylon, 2"	
	D4903	Bulkhead Fitting, 3/4" NPTF	
	D4904	Hex Nut, 3/4"	
	D4905	Gasket, EPDM 3/4"	
	10096	Pipe Plug, Nylon, 3/4"	
	10277	Pipe Plug, Nylon, 2"	
	D4899	Bulkhead Fitting, 1 1/4"(1000/1000HD Only)	
	D4900	Hex Nut, 1 1/4"(1000/1000HD Only)	
	D4901	Gasket, 1 1/4"(1000/1000HD Only)	
	D4902	Nylon Slip Ring, 1 1/4"(1000/1000HD Only)	
	10294	Pipe Plug, Nylon, 1 1/4"(1000/1000HD Only)	
	7.	10001	HHCS, 3/8"-16 x 1"
		10229	Lock Washer, 3/8"
10104		Hex Nut, 3/8"-16	
8.	D1114	U-Bolt, 7" x 7" x 5/8"-11	
	10230	Lock Washer, 5/8"	
	10104	Hex Nut, 5/8"-11	
9.	10062	HHCS, 3/8"-16 x 3"	
	10049	HHCS, 3/8"-16 x 2 1/2"	
	10210	Washer, 3/8" USS	
	10108	Lock Nut, 3/8"-16	
10.	10026	HHCS, 3/4"-10 x 2"	
	10231	Lock Washer, 3/4"	
	10105	Hex Nut, 3/4"-10	
11.	10003	HHCS, 3/8"-16 x 1 1/2"	
	10229	Lock Washer, 3/8"	
	10101	Hex Nut, 3/8"-16	
12.	D3929	Axle Clamp	

TANK, SADDLE AND FRAME ASSEMBLY

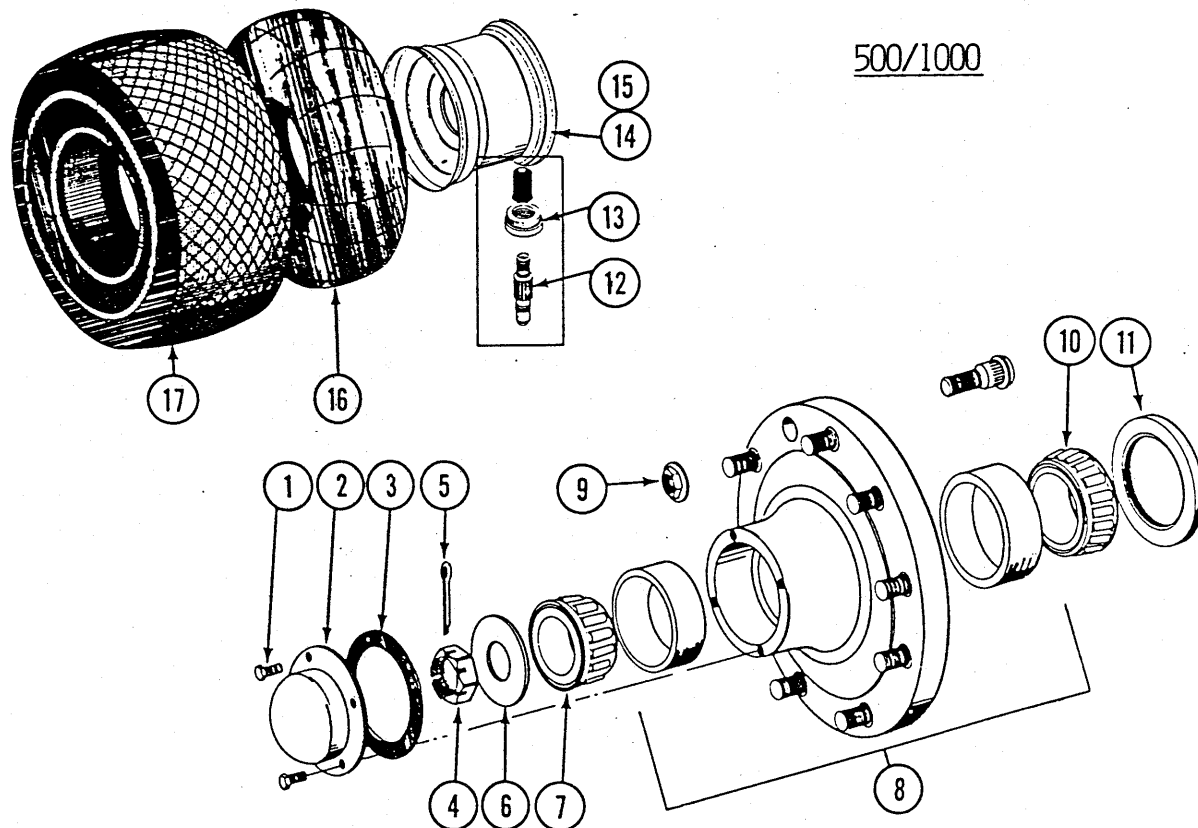


TANK, SADDLE AND FRAME ASSEMBLY

1600

ITEM	PART NO.	DESCRIPTION
1.	A3688	Tank Saddle and Frame
2.	A3691	Ladder
3.	D3929	Clamp
4.	A3690	Tank Band, Middle and Rear
	A4083	Tank Band, Front
5.	D2044	U-Bolt, 4" x 4" x 3/4"-10
	10231	Lock Washer, 3/4"
	10105	Hex Nut, 3/4"-10
6.	D1114	U-Bolt, 7" x 7" x 5/8"-11
	10230	Lock Washer, 5/8"
	10104	Hex Nut, 5/8"-11
7.	10026	HHCS, 3/4"-10 x 2"
	10231	Lock Washer, 3/4"
	10105	Hex Nut, 3/4"-10
8.	10061	HHCS, 3/8"-16 x 3 1/2"
	10062	HHCS, 3/8"-16 x 3"
	10210	Washer, 3/8" USS
	10108	Lock Nut, 3/8"-16
9.	A4034	Sparge Tube, 128"
10.	R0850	Fitting
11.	D5534	Nut, 2"
12.	D5523	Pipe
13.	10383	Cap
14.	A3674	Tank With Lid, Baffles and Fittings
	10377	HHCS, 5/16"-18 x 1 1/4", Stainless Steel
	10378	Lock Washer, 5/16"-18, Stainless Steel
	10379	Washer, 5/16" SAE, Stainless Steel
	10380	Hex Nut, 5/16"-18, Stainless Steel
	D5564	Baffle, Stainless Steel
	D5565	Angle, Support, Stainless Steel
	D5566	Clip, Mounting, Stainless Steel
	D5562	Fillwell, 16"
	A3723	Cover W/4" Center Cap w/Breathers, 16"
	A3724	Center Cap W/Breathers, 4"
	D5534	Nut, 2"
	D5535	O-Ring, 2"
	D5536	Fitting, Double Thread, 2", Sparge Tube
	D5563	Bulkhead, 2", Rear
	D5567	Anti-Vortex Fitting, 2", Tank Bottom

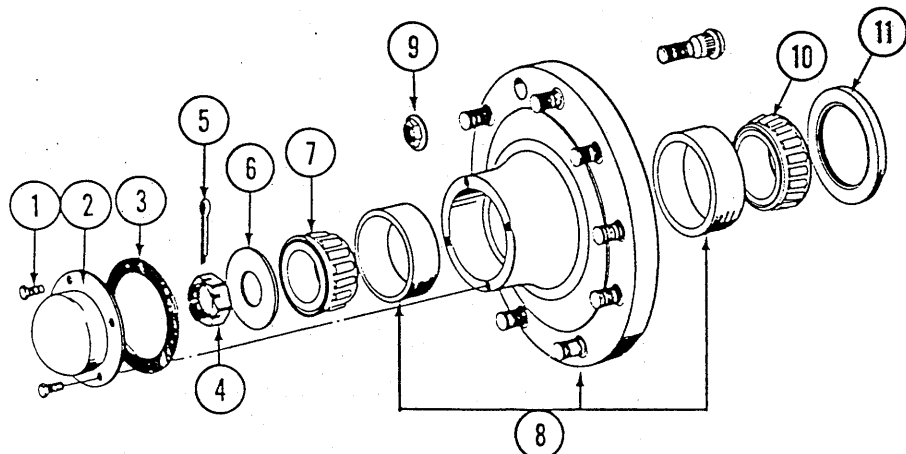
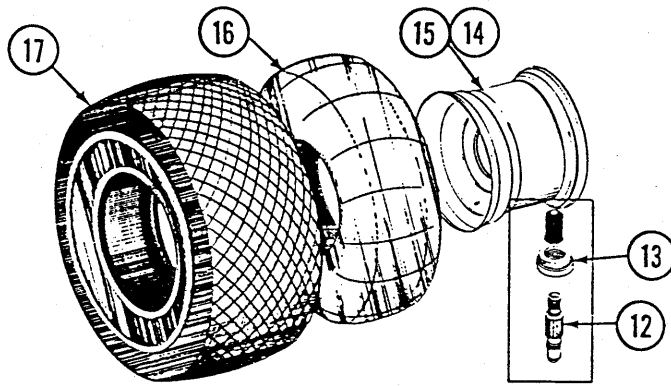
TIRE AND HUB ASSEMBLY



ITEM	PART NO.	DESCRIPTION
1.	10376	HHCS, 5/16" - 18 x 3/4"
2.	D1529	Cap
3.	D1536	Seal
4.	10070	Slotted Hex Nut, 1 1/4" - 12 UNF
5.	10460	Cotter Pin, 1/4" - 2"
6.	10139	Washer, 1 1/4"
7.	A705	Bearing Cone, Outer
8.	A703	Hub with Cups and Stud Bolts (10 Bolt)
	R322	Cup, Outer
	R323	Cup, Inner
	R257	Stud Bolt, 3/4" - 16 x 2 1/2"
9.	R256	Lug Nut, 3/4" - 16 (Use With A461 Wheel)
	10625	Flange Nut, 3/4" - 16 (Shown) (Use With A2665 and A3045 Wheel)
10.	A779	Bearing Cone, Inner
11.	A706	Seal
12.	D1527	Valve Stem (Includes Core and Cap)
13.	D1528	Nut, Nylon
14.	D2411	Plug, Rubber
15.	A461	Wheel, DW 20" x 26", 1000
	A3045	Wheel, DW 20" x 26", 1000
	A2665	Wheel, DW 16" x 26", 500
16.	D1531	Tube, 23.1" x 26", 1000
	D3834	Tube, 18.4" x 26", 500
17.	D1330	Tire, 23.1 x 26", 8 Ply, 1000
	D3642	Tire, 18.4" x 26", 6 Ply, 500
A.	A460	Hub Assembly (Items 1 thru 11)(Includes R256 Lug Nut)

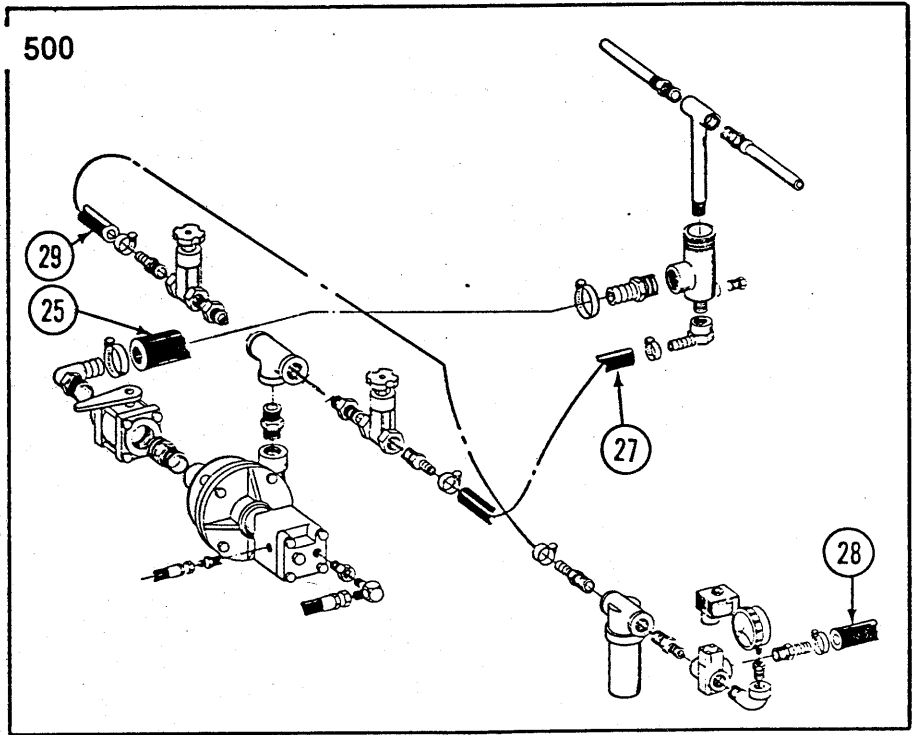
TIRE AND HUB ASSEMBLY

1000HD/1600

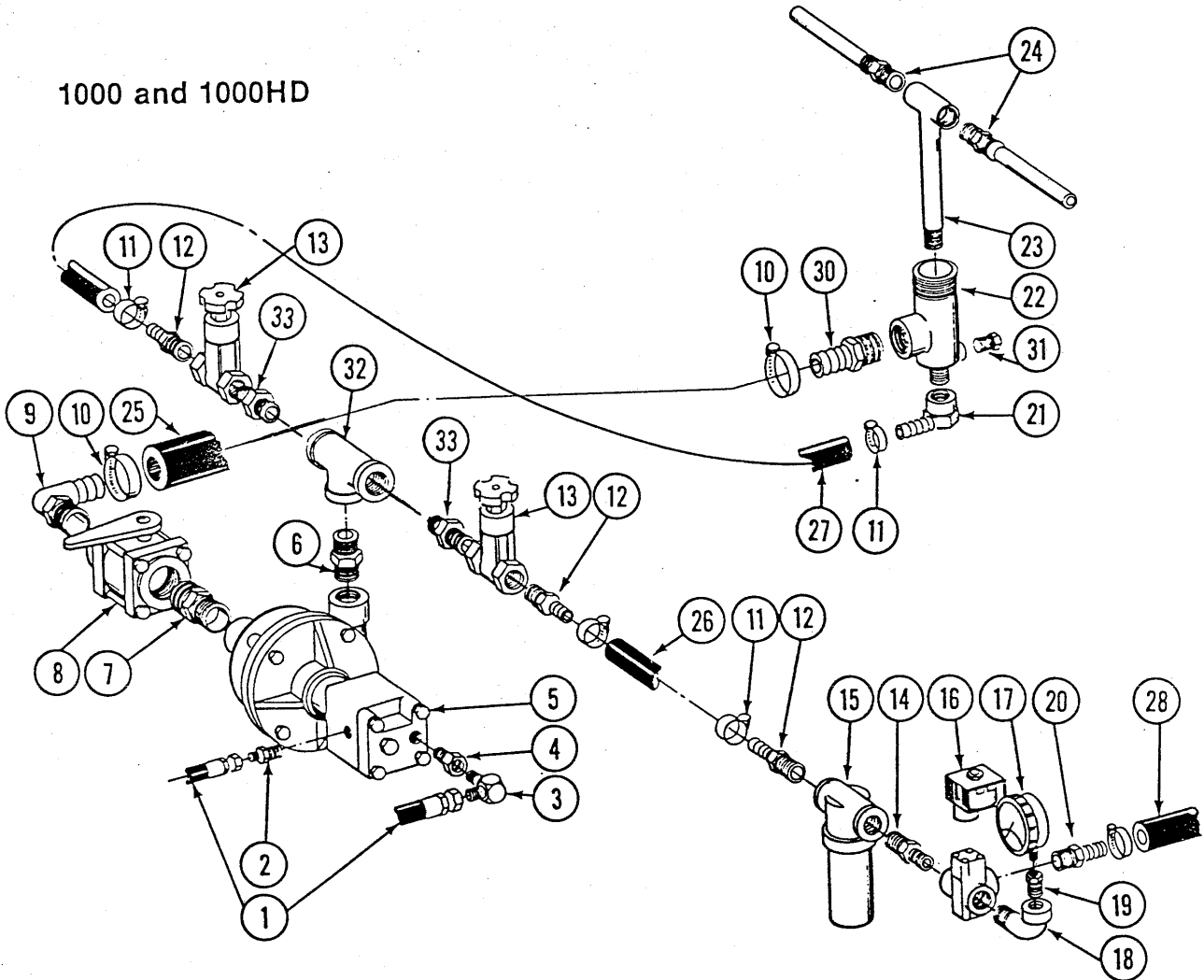


ITEM	PART NO.	DESCRIPTION
1.	10054	HHCS, 5/16"-18 x 1/2"
2.	D1360	Cap
3.	D1359	Seal
4.	10726	Slotted Hex Nut, 2"-12
5.	10471	Cotter Pin, 3/8" x 2 1/2"
6.	10198	Washer, 2"
7.	A0530	Bearing Cone, Outer
8.	A0529	Hub with Cups and Stud Bolts(10 Bolt)
	R0257	Stud Bolt, 3/4"-16 x 2 1/2"
	R0192	Cup, Outer
	R0191	Cup, Inner
9.	10625	Flange Nut, 3/4"-16
10.	A0531	Bearing Cone, Inner
11.	A0532	Seal
12.	D1527	Valve Stem(Includes Core and Cap)
13.	D1528	Nut, Nylon
14.	D2411	Plug, Rubber
15.	A0446	Wheel, 21" x 32", 1000HD
	A0445	Wheel, 27" x 32", Optional 1000HD, 1600
16.	D1525	Tube, 24.5" x 32", 1000HD
	D1526	Tube, 30.5" x 32", Optional 1000HD, 1600
17.	D4093	Tire, 24.5" x 32", 12 Ply, 1000HD
	D4092	Tire, 30.5" x 32", 12 Ply, Optional 1000HD, 1600
A.	A0444	Hub Assembly (Items 1 thru 11)

HOSES AND FITTINGS, FRONT



1000 and 1000HD

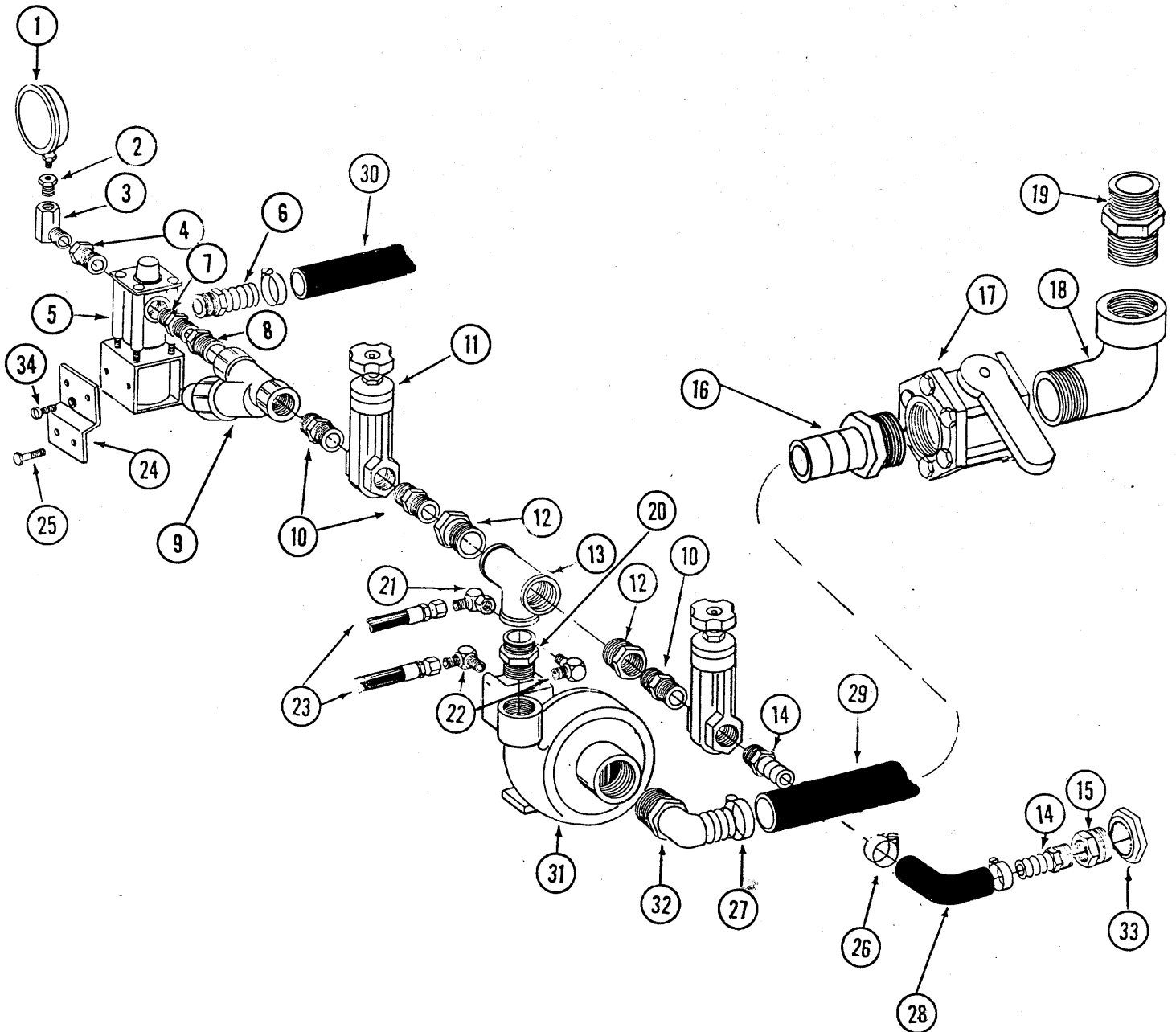


HOSES AND FITTINGS, FRONT

500/1000/1000HD

ITEM	PART NO.	DESCRIPTION
1.	A1111	Hose Assembly, 1/4" x 120"
2.	2404-06-06	Adapter, Straight
3.	2501-06-04	Elbow
4.	5406-06-04	Bushing, 3/8"
5.	A2641	Ace Pump Complete w/Motor
	R0687	Hydraulic Motor
	R0665	Pump Repair Kit
	R0666	Hydraulic Motor Repair Kit
6.	10296	Closed Nipple, Nylon, 1" x 1"
7.	10270	Closed Nipple, 1 1/4" x 1 1/4"
8.	A2658	Ball Valve, 1 1/4"
9.	10742	Elbow, 1 1/4"
10.	10675	Hose Clamp, No. 20
11.	10278	Hose Clamp, No. 16
12.	10272	Hose Barb Adapter, 3/4" x 3/4"
13.	A2661	Gate Valve, 3/4"
14.	10273	Closed Nipple, 3/4" x 3/4"
15.	A2662	Strainer Complete
	R0897	Top
	R0898	Gasket
	R0899	Screen
	R0900	Bottom
16.		Solenoid Valve, See Solenoid Valve Page
17.	A2727	Pressure Gauge, 2 1/2"
	A2664	Pressure Gauge, 4"
18.	10280	Elbow, 3/4"
19.	10275	Bushing, 3/4" x 1/4"
20.	10274	Hose Barb Adapter, 1/2" x 3/4"
21.	D3628	Agitator Elbow
22.	D3629	Combination Tank Adapter
23.	D3626	Agitator Tee
24.	D3627	Agitator
25.	4200-07	Hose, 1 1/4" I.D. x 4 3/4'
26.	4205-01	Hose, 3/4" I.D. x 12 1/2"
27.	4205-02	Hose, 3/4" I.D. x 62"
28.	4205-03	Hose, 3/4" I.D. x 97"
29.	4205-04	Hose, 3/4" I.D. x 36"
30.	10745	Hose Barb, Nylon, 1 1/4"
31.	10297	Pipe Plug, 1/2"
32.	10279	Tee, Nylon, 1" x 1" x 1"
33.	10271	Closed Nipple, 1" x 3/4"

HOSES AND FITTINGS, FRONT

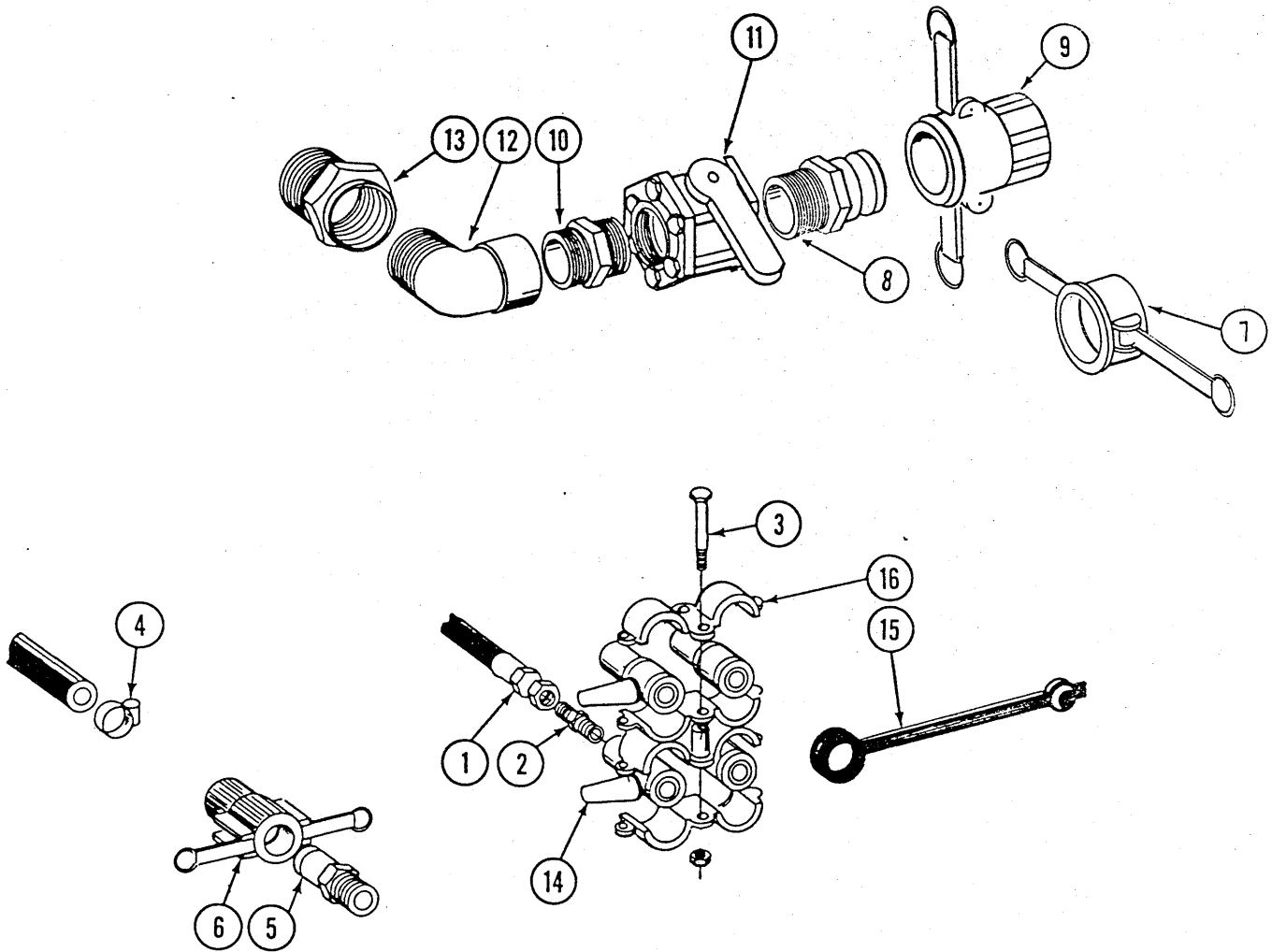


HOSES AND FITTINGS, FRONT

ITEM	PART NO.	DESCRIPTION	1600
1.	A2664	Pressure Gauge, 4"	
2.	10275	Reducing Bushing, 3/4" to 1/4"	
3.	10280	Elbow, 3/4"	
4.	10295	Reducing Bushing, 1" to 3/4"	
5.		Solenoid Valve, See Solenoid Valve Page	
6.	10367	Barb Fitting, 1" to 1 1/4"	
7.	10296	Closed Nipple, 1"	
8.	10319	Reducing Bushing, 1 1/4" to 1"	
9.	A3893	Strainer Complete	
	R0880	Screen	
	R0881	Gasket	
	R0882	"Y" Body	
	R0883	Cap, End	
10.	10270	Closed Nipple, 1 1/4"	
11.	A3892	Gate Valve	
12.	10365	Reducing Bushing, 1 1/2" to 1 1/4"	
13.	10363	Tee, 1 1/2"	
14.	10745	Hose Barb, 1 1/4"	
15.	10288	Reducing Bushing, 2" to 1 1/4"	
16.	10368	Hose Barb, 2"	
17.	A2660	Valve, 2"	
18.	10287	Elbow, 2"	
19.	10276	Closed Nipple, 2"	
20.	10366	Closed Nipple, 1 1/2"	
21.	6500-06	Elbow, Used with 210 pump	
	6500-10	Elbow, Used with 310 pump	
22.	2501-06-06	Elbow, Used with 210 pump	
	2501-10-08	Elbow, Used with 310 pump	
23.	A1108	Hose Assembly, 1/4" x 140", Used with 210 pump	
	A1423	Hose Assembly, 1/2" x 140", Used with 310 pump	
24.	D5353	Bracket	
25.	10001	HHCS, 3/8"-16 x 1"	
	10210	Washer, 3/8" USS	
	10229	Lock Washer, 3/8"	
	10101	Hex Nut, 3/8"-16	
26.	10674	Hose Clamp, No. 24	
27.	10676	Hose Clamp, No. 36	
28.	4200-10	Hose, 1 1/4" I.D. x 14"	
29.	4201-01	Hose, 2" I.D. x 18"	
30.	4200-09	Hose, 1 1/4" I.D. x 144"	
31.	A3890	Ace Pump Complete W/Motor (210)	
	R0858	Hydraulic Motor (210)	
	R0665	Pump Repair Kit (210)	
	R0666	Hydraulic Motor Repair Kit (210)	
	A3994	Ace Pump Complete W/Motor (310)	
	R0854	Hydraulic Motor (310)	
	R0665	Pump Repair Kit (310)	
	R0857	Hydraulic Motor Repair Kit (310)	
	R0853	Frame (310)	
	R0855	Hardware, Mounting (310)	
32.	10364	Elbow, 2"	
33.		Part of Tank, See Tank Page	
34.	10386	Machine Screw, #12-24 x 1/2"	
	10387	Flat Washer, #12	
35.	D5568	Restrictor Orifice, Used with 210 hydraulic pump. (Not Shown)	

HOSES AND FITTINGS, REAR

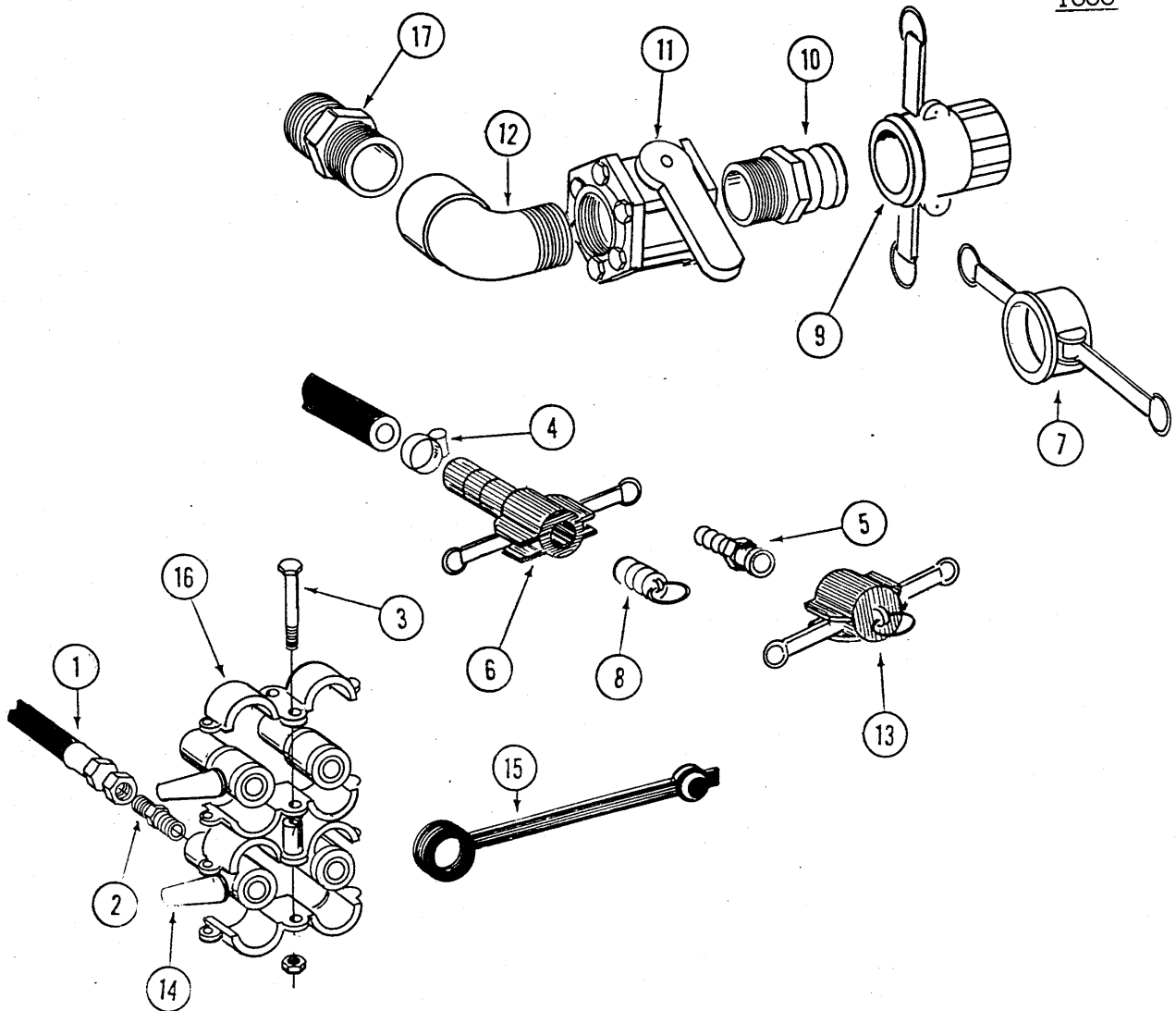
500/1000/1000HD



ITEM	PART NO.	DESCRIPTION
1.	A1091	Hose Assembly, 3/8" x 216"
2.	2404-8-8	Fitting
3.	10172	HHCS, 3/8" - 16 x 5"
	10108	Lock Nut, 3/8" - 16
4.	10278	Hose Clamp, No. 16
5.	D3624	Adapter
6.	D3625	Coupler
7.	D3951	Dust Cap
8.	D3623	Adapter
9.	D3622	Coupler
10.	10276	Closed Nipple, 2"
11.	A2660	Ball Valve, 2"
12.	10287	Elbow, Nylon, 2"
13.		Part of Tank, See Tank Page
14.	A2767	Coupler Lever, Female
15.	D3761	Dust Plug
16.	D3763	Coupler Clamp
A.	A2663	Coupler Kit Complete (Items 14 thru 16)

HOSES AND FITTINGS, REAR

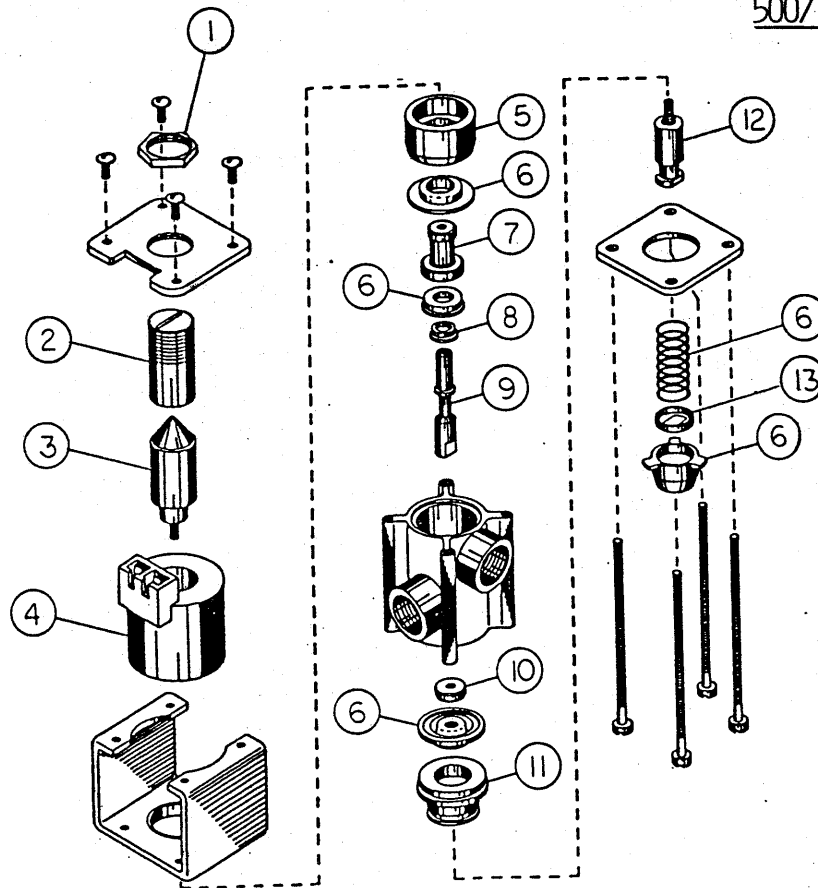
1600



ITEM	PART NO.	DESCRIPTION
1.	A1035	Hose Assembly, 3/8" x 276"
2.	2404-08-08	Fitting
3.	10172	HHCS, 3/8"-16 x 5"
	10108	Lock Nut, 3/8"-16
4.	10674	Hose Clamp, No. 24
5.	D5213	Adapter
6.	A3941	Coupler
7.	D3951	Dust Cap
8.	A3942	Plug
9.	D3622	Coupler
10.	D3623	Adapter
11.	A2660	Ball Valve, 2"
12.	10287	Elbow, Nylon, 2"
13.	A3940	Cap
14.	A2767	Coupler Lever, Female
15.	D3761	Dust Plug
16.	D3763	Coupler Clamp
17.		Part of Tank, See Tank Page.
A.	A2663	Coupler Kit Complete (Items 14 thru 16)

SOLENOID VALVE

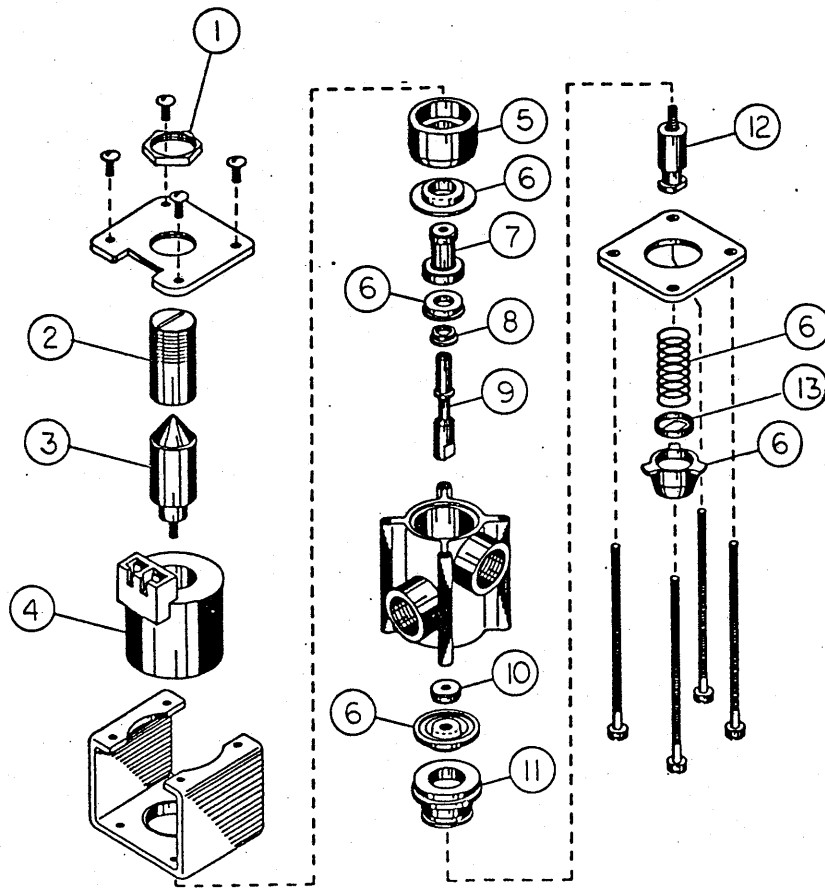
500/1000/1000HD



ITEM	PART NO.	DESCRIPTION
1.	R0884	Jam Nut
2.	R0885	Armature Stop
3.	R0888	Armature
4.	R0886	Coil Assembly
5.	R0887	Upper Diaphragm Housing
6.	R0896	Spare Parts Kit
7.	R0891	Retainer
8.	R0892	Spacer
9.	R0893	Stem
10.	R0890	Washer
11.	R0895	Lower Diaphragm Housing
12.	R0894	Lower Diaphragm Piston
13.	R0889	Retainer
A.	A2659	Solenoid Valve Complete

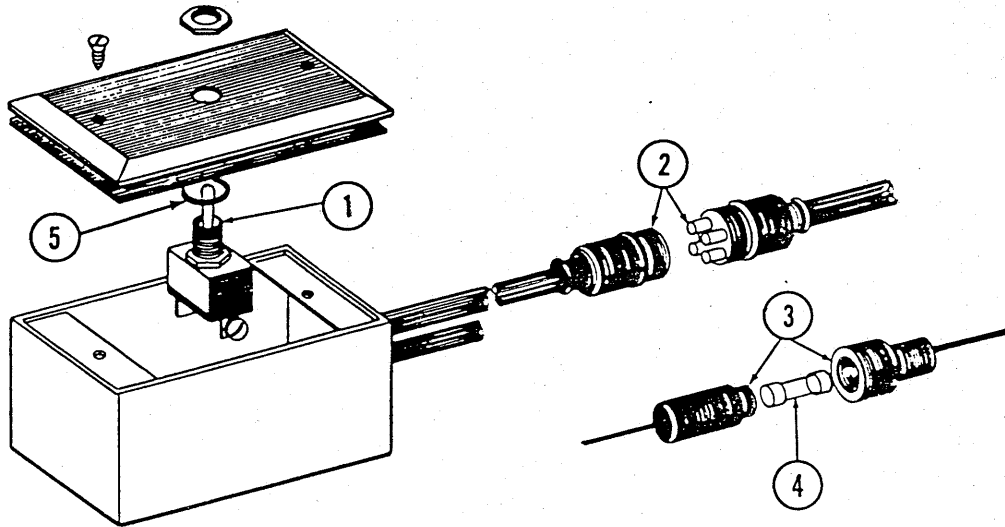
SOLENOID VALVE

1600



ITEM	PART NO.	DESCRIPTION
1.	R0867	Jam Nut
2.	R0868	Armature Stop
3.	R0869	Armature
4.	R0879	Coil Assembly
5.	R0870	Upper Diaphragm Housing
6.	R0878	Spare Parts Kit
7.	R0871	Retainer
8.	R0872	Spacer
9.	R0873	Stem
10.	R0874	Washer
11.	R0875	Lower Diaphragm Housing
12.	R0876	Lower Diaphragm Piston
13.	R0877	Retainer
A.	A3894	Solenoid Valve Complete

ELECTRICAL ASSEMBLY



ITEM	PART NO.	DESCRIPTION
1.	A2527	Toggle Switch
2.	A1911	4 Prong Trailer Connector
3.	A1917	Fuse Holder
4.		15 AMP Fuse
5.	D3860	O-Ring Seal
A.	A2714	Control Box Assembly

DECALS, REFLECTORS AND TIE STRAPS

CAUTION

1. Read and understand the Operator's Manual.
2. Stop the tractor engine before leaving the operator's platform.
3. Keep riders off the machine.
4. Make certain everyone is clear of the machine before starting the tractor engine and operating.
5. Keep all shields in place.
6. Never lubricate, adjust, unclog or service the machine with tractor engine running.
7. Wait for all movement to stop before servicing.
8. Keep hands, feet and clothing away from moving parts.
9. Use flashing warning lights when operating on highways except when prohibited by law.

1

WARNING

TOW ONLY WITH FARM TRACTOR.

2

KINZE

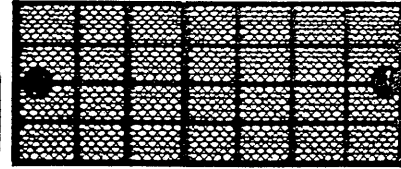
3

CAUTION

MAXIMUM LOAD
500 POUNDS

7100-76

4



5

WARNING

USE ONLY FOR AGRICULTURAL CHEMICALS OR WATER. DO NOT USE FOR FLAMMABLE LIQUIDS OF ANY TYPE.

6

ITEM	PART NO.	DESCRIPTION
1.	7100-46	Decal, Caution
2.	7100-56	Decal, Warning
3.	7100-54	Decal, Kinze, 4 1/4" x 17 1/4"
	7100-57	Decal, Kinze, 3" x 12"
4.	7100-76	Decal, Caution
5.	7200-3	Reflector, Red
	7200-4	Reflector, Amber
6.	7100-78	Decal, Warning
7.	D1512	Tie Strap, 6"
8.	R439	Blue Paint, Quart (not shown)
	R440	Blue Paint, Gallon (not shown)
	R155	Blue Paint, Aerosol (not shown)
9.	7100-90	Decal, Warning

7

WARNING

THIS MACHINE HAS BEEN DESIGNED AND BUILT WITH YOUR SAFETY IN MIND. ANY ALTERATION TO THE DESIGN OR CONSTRUCTION MAY CREATE SAFETY HAZARDS. DO NOT MAKE ANY ALTERATIONS OR CHANGES TO THE EQUIPMENT, BUT IF ANY ALTERATIONS OR CHANGES ARE MADE YOU MUST FOLLOW ALL APPROPRIATE SAFETY STANDARDS AND PRACTICE TO PROTECT YOU AND OTHERS NEAR THIS MACHINE FROM INJURY.

7100-90

9

NUMERIAL INDEX

PART NO.	PAGE	PART NO.	PAGE	PART NO.	PAGE	PART NO.	PAGE
A0444	P8	A3685	P2	D0558	P2	D5562	P6
A0445	P8	A3688	P6	D0740	P2	D5563	P6
A0446	P8	A3690	P6	D1114	P4,P6	D5564	P6
A0460	P7	A3691	P6	D1330	P7	D5565	P6
A0461	P7	A3723	P6	D1359	P8	D5566	P6
A0529	P8	A3724	P6	D1360	P8	D5567	P6
A0530	P8	A3890	P12	D1512	P17	D5568	P12
A0531	P8	A3892	P12	D1525	P8		
A0532	P8	A3893	P12	D1526	P8		
A0703	P7	A3894	P16	D1527	P7,P8	R0155	P17
A0705	P7	A3940	P14	D1528	P7,P8	R0191	P8
A0706	P7	A3941	P14	D1529	P7	R0192	P8
A0779	P7	A3942	P14	D1531	P7	R0255	P2
A1035	P14	A3994	P12	D1536	P7	R0256	P7
A1091	P13	A4034	P6	D2044	P6	R0257	P7,P8
A1108	P12	A4083	P6	D2411	P7,P8	R0322	P7
A1111	P10			D3548	P2	R0323	P7
A1423	P12			D3622	P13,P14	R0439	P17
A1911	P17			D3623	P13,P14	R0440	P17
A1917	P17			D3624	P13	R0665	P10,P12
A2527	P17			D3625	P13	R0666	P10,P12
A2639	P4	B0156	P2	D3626	P10	R0687	P10
A2640	P4			D3627	P10	R0765	P2
A2641	P10			D3628	P10	R0850	P6
A2658	P10			D3629	P10	R0853	P12
A2659	P15			D3642	P7	R0854	P12
A2660	P12,P13,P14			D3756	P4	R0855	P12
A2661	P10			D3757	P4	R0857	P12
A2662	P10			D3758	P4	R0858	P12
A2663	P13,P14			D3759	P4	R0867	P16
A2664	P10,P12			D3760	P4	R0868	P16
A2665	P7			D3761	P13,P14	R0869	P16
A2669	P2			D3763	P13,P14	R0870	P16
A2670	P4			D3834	P7	R0871	P16
A2671	P4			D3860	P17	R0872	P16
A2672	P4			D3929	P4,P6	R0873	P16
A2673	P4			D3951	P13,P14	R0874	P16
A2674	P4			D4092	P8	R0875	P16
A2675	P2			D4093	P8	R0876	P16
A2676	P2			D4898	P4	R0877	P16
A2678	P2			D4899	P4	R0878	P16
A2679	P4			D4900	P4	R0879	P16
A2680	P4			D4901	P4	R0880	P12
A2681	P4			D4902	P4	R0881	P12
A2682	P4			D4903	P4	R0882	P12
A2684	P2			D4904	P4	R0883	P12
A2714	P17			D4905	P4	R0884	P15
A2727	P10			D5213	P14	R0885	P15
A2767	P13,P14			D5353	P12	R0886	P15
A2784	P4			D5523	P6	R0887	P15
A3045	P7			D5534	P6	R0888	P15
A3674	P6			D5535	P6	R0889	P15
				D5536	P6		

NUMERIAL INDEX

PART NO.	PAGE	PART NO.	PAGE	PART NO.	PAGE
R0890	P15	10294	P4	4100-01A	P2
R0891	P15	10295	P12	4100-01B	P2
R0892	P15	10296	P10,P12	4100-02	P2
R0893	P15	10297	P10	4200-07	P10
R0894	P15	10319	P12	4200-09	P12
R0895	P15	10363	P12	4200-10	P12
R0896	P15	10364	P12	4201-01	P12
R0897	P10	10365	P12	4205-01	P10
R0898	P10	10366	P12	4205-02	P10
R0899	P10	10367	P12	4205-03	P10
R0900	P10	10368	P12	4205-04	P10
		10376	P7	6500-06	P12
		10377	P6	6500-10	P12
		10378	P6	6561X	P2
		10379	P6	6562X	P2
10001	P4,P12	10380	P6	7100-46	P17
10003	P4	10383	P6	7100-54	P17
10026	P2,P4,P6	10386	P12	7100-56	P17
10027	P2	10387	P12	7100-57	P17
10049	P4	10460	P7	7100-76	P17
10054	P8	10471	P8	7100-78	P17
10061	P6	10625	P7,P8	7100-90	P17
10062	P4,P6	10674	P12,P14	7200-03	P17
10070	P7	10675	P10	7200-04	P17
10096	P4	10676	P12	2404-06-06	P10
10101	P4,P12	10726	P8	2404-08-08	P13,P14
10104	P4,P6	10742	P10	2501-06-04	P10
10105	P2,P4,P6	10745	P10,P12	2501-06-06	P12
10108	P2,P4,P6, P13,P14			2501-10-08	P12
10139	P7			5406-06-04	P10
10157	P2				
10169	P2				
10172	P13,P14				
10198	P8				
10210	P4,P6,P12				
10229	P4,P12				
10230	P4,P6				
10231	P2,P4,P6				
10270	P10,P12				
10271	P10				
10272	P10				
10273	P10				
10274	P10				
10275	P10,P12				
10276	P12,P13				
10277	P4				
10278	P10,P13				
10279	P10				
10280	P10,P12				
10287	P12,P13,P14				
10288	P12				