

**Welcome! The office hour will
begin at 1:00 PM (EST)**

Lameese Akacem
Laurie Stepanek
Sonia Ortiz-Miranda
Justin Rosenzweig

Postbaccalaureate Research Education Program (PREP) Office Hour

[PAR-22-220](#)

January 10th, 2024

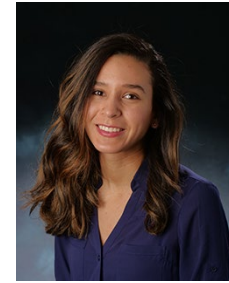
Before We Start

- This office hour will **NOT** be recorded, however the overview slides will be posted online.
- After the brief program overview please raise your “hand” or type your questions in the “Q&A” chat box.
- Please note that the office hour is not intended for students or recent graduates that are interested in becoming PREP scholars. Prospective scholars can find more information about applying to PREP programs [here](#).

Office Hour Participants

Program

- Lameese Akacem, Program Director
- Laurie Stepanek, Program Director



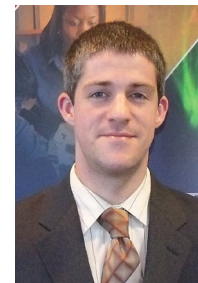
Review

- Sonia Ortiz-Miranda, Scientific Review Officer



Grants Management

- Justin Rosenzweig, Grants Management Team Leader



Disclaimer

This office hour and accompanying slides are for informational purposes only. They serve as a brief overview of the PREP program and are not meant to be comprehensive in coverage of all required components of an application.

Applicants are responsible for following the instructions detailed in the NOFOs and any Related Notices (included in the NOFO's Overview Information section), and the SF424 Application Guide.

PREP Program Goal

To develop a [diverse pool](#) of well-trained postbaccalaureates who will transition into and complete rigorous biomedical, research-focused doctoral degree programs (e.g., Ph.D. or M.D./Ph.D.) in biomedical fields relevant to the [NIGMS mission](#).

PREP Website:

<https://www.nigms.nih.gov/training/PREP>

Program Considerations

- Mentors should represent a **broad range** of biomedical disciplines **relevant to the [NIGMS mission](#)**.
- Participants should spend **75% effort** on **research** and **25%** on further **skills development**.
- Expectation is that most participants will transition out of PREP after **1 year**; *a 2nd year is allowable if necessary to enhance a participant's competitiveness.*
- The **vast majority** (e.g., greater than 75%) of a program's participants should enter research-oriented, biomedical doctoral degree programs (e.g., **PhD or MD/PhD**) within two years of completing PREP.
- Renewals will be evaluated on success in recruiting individuals from diverse populations, participant outcomes, and broader impacts on the institution and training community.

Eligibility Overview

Eligibility	PREP
Organization	<ul style="list-style-type: none">• Grant biomedical Ph.Ds.• Research Intensive: Average > \$7.5M NIH Research Project Grant (RPG) funding per year over the past three fiscal years• <i>Note:</i> Eligible organization determined by unique entity identifier (UEI) and a unique NIH eRA Institutional Profile File (IPF) number (see NOT-GM-23-019)
Principal Investigator(s)	<ul style="list-style-type: none">• Contact PI must have full time appointment• At least one PI should be an active investigator in the biomedical sciences• PI(s) must be capable of providing both administrative and scientific leadership• Multiple PIs are encouraged

Eligibility Overview (cont'd.)

Eligibility	PREP
Participants	<ul style="list-style-type: none">• Applicant organization selects and establishes qualifications, consistent with applicable law.• US Citizen, Permanent Resident or non-citizen National• Earned baccalaureate degree \leq 36 months prior to applying to a PREP program; not currently enrolled in degree program.• Intend to apply to research-focused biomedical doctoral degree program (e.g., Ph.D. or M.D./Ph.D.).• Institutions are strongly encouraged to recruit prospective candidates who will enhance diversity on a national basis (for example, see Notice of NIH's Interest in Diversity).

PREP Key Program Dates

NOFO	Application Due Date	Review	Council	Earliest Budget Start
<u>PAR-22-220</u>	January 31, 2024	June/July 2024	October 2024	December 2024
	January 31, 2025	June/July 2025	October 2025	December 2025

Budget Information and Instruction Updates

- The maximum award budget has been **increased** to **\$500,000 direct costs per year**
- The allowable total PD/PI effort has been **increased** to **1.8 person-months per year**
- Instructions for requesting salary, fringe benefits, tuition remission and travel have been **clarified**
 - Use **Section B. Other Personnel** to request allowable salary and fringe benefits and **Section E. Participant/Trainee Support Costs** to request allowable tuition remission and travel to support participants in the program

See [NOT-GM-24-010](#) for details

Preparing an Application

Read the NOFO ([PAR-22-220](#)), Related Notices and [SF424 \(R&R\) Application Guide](#) thoroughly

Reminder: Resubmissions are not allowed.

Unsuccessful applicants are encouraged to apply again, following the instructions for new applications. Do not include an introduction or refer to prior critiques. Resubmissions will be withdrawn prior to review.

Questions?

Lameese Akacem (PREP PO)

lameese.akacem@nih.gov

Laurie Stepanek (PREP PO)

laurie.stepanek@nih.gov

Sonia Ortiz-Miranda (Scientific Review)

sonia.ortiz-miranda@nih.gov

Justin Rosenzweig (Grants Management)

rosenzwj@nigms.nih.gov