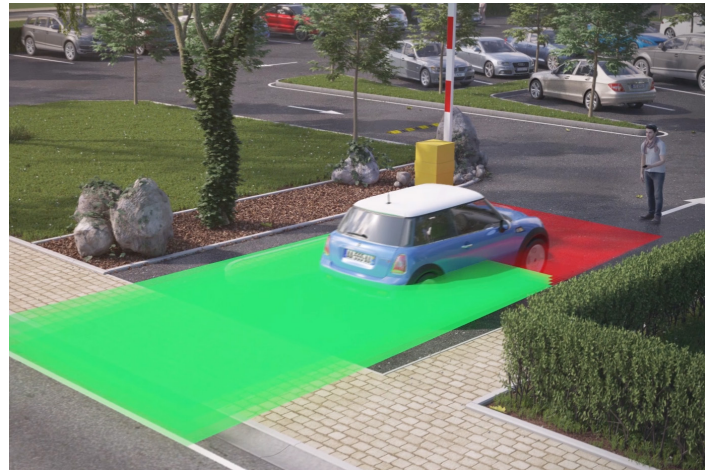


LZR[®]-H100

LASER SCANNER FOR GATE & BARRIER APPLICATIONS



PRIMARY APPLICATIONS



DESCRIPTION

BEA's LZR-H100 is a laser-based time-of-flight sensor designed for gate and barrier applications.

This solution provides four laser-based curtains, offering a three dimensional detection zone for accurate object detection. Its detection curtains are highly-configurable and can be set up for activation and presence detection in vehicle sensing applications.

The LZR-H100 is an effective alternative to induction loops and is housed in a NEMA 4 rated enclosure, further ensuring its performance in outdoor environments.

FEATURES & BENEFITS

- Two relays allow for activation via motion or presence
- Ideal for applications where cutting ground for loops is prohibited, impossible or expensive
- Time-of-Flight presence-based opto-electronic sensor ensures accurate and immediate detection
- Ability to detect vehicle trajectory during approach and departure
- Ability to detect or ignore pedestrian traffic
- Maximum detection field of 9.6 m x 9.6 m (32 ft x 32 ft)
- Teach-in setup via walk path or remote control configuration

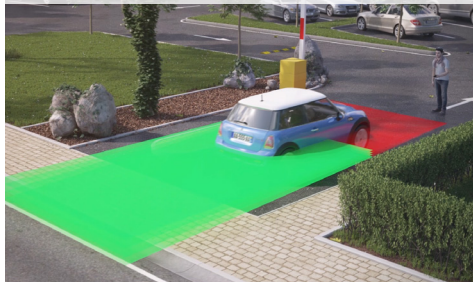


BEA, Inc.
RIDC Park West
100 Enterprise Drive
Pittsburgh, PA 15275-1213

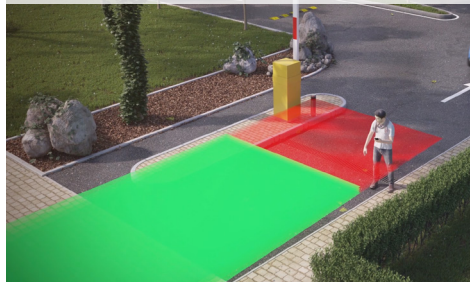
Customer Service: 800.523.2462
Technical Support: 800.407.4545
www.BEAinc.com

APPLICATIONS

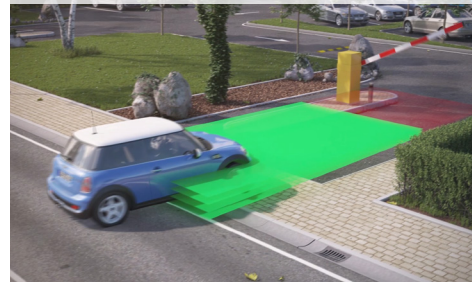
GATE & BARRIER PRESENCE DETECTION



PEDESTRIAN PRESENCE DETECTION



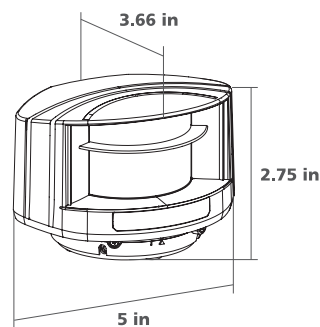
GATE & BARRIER ACTIVATION









TECHNICAL SPECIFICATIONS

Technology	LASER scanner, Time-of-Flight measurement
Detection Mode	Motion & Presence
Max. Detection Range	9.6 m x 9.6 m (32 ft x 32 ft)
Remission Factor	> 2%
Angular Resolution	0.3516°
Emission Characteristics	
IR LASER	Wavelength 905 nm; max. output pulse power 75 W (CLASS 1)
Red Visible LASER	Wavelength 650 nm; max. output CW power 3 mW (CLASS 3R)
Supply Voltage	10 – 35 VDC @ Sensor Terminal
Peak Current at Power-On	1.8 A (Max. 80 ms @ 35 V)
Power Consumption	< 5 W
Response Time	Min 20 ms; Max 80 ms
Output	2 electronic relays (galvanic isolated – polarity free)
Max. Switching Voltage	35 VDC / 24 VAC
Max. Switching Current	80 mA (resistive)
LED-Signal	1 Blue LED: Status « Power-on » 1 Orange LED: Status « Error » 2 Red/Green LEDs: Status « Detection/Output »
Dimensions	3 5/8" x 2 3/4" x 5" (W x H x D) mounting bracket: + 1/2"
Cable Length	33'
Material	PC / ASA
Color	Black
Rotation Angle on Bracket	-5 – 5° (lockable)
Tilt Angle on Bracket	-3 – 3°
Degree of Protection	NEMA 4 / IP65
Temperature Range	-22 °F – 140 °F if powered (-30 °C – 60 °C if powered); 14 °F – 140 °F unpowered (-10 °C – 60 °C unpowered)
Humidity	0 – 95% non-condensing
Vibrations	< 2 G
Pollution on Front Screens	Max. 30%; Homogenous
Norm Conformance	IEC 61000-6-2; IEC 61000-6-3; IEC 60950-1; IEC 60825-1 ISO 13849-1 (PL "d" CAT 2); IEC 62061 (SIL 2); IEC 61496-1 (Type 2)

DIMENSIONAL DRAWINGS



RELATED PRODUCTS

 <p>10LZRH100 LZR-H100 SENSOR</p>	 <p>10BR3X BR3-X LOGIC MODULE</p>	 <p>10PS12-24 110-1224 VDC POWER SUPPLY</p>
 <p>10LBA LZR MOUNTING BRACKET ACCESSORY</p>	 <p>10MINIBRACKET 6 IN – 12 IN EXTENSION BRACKET</p>	 <p>10REMOTE BEA UNIVERSAL REMOTE CONTROL *REMOTE IS REQUIRED</p>
 <p>10LIGHT-XX LED SIGNAL MODULAR LIGHT SERIES</p>	 <p>10PSMDR2024 100 – 240 VAC, 24 VDC POWER SUPPLY</p>	

www.BEAinc.com

© 2019 BEA, Inc. All rights reserved.

LZR®-H100

LASER SCANNER FOR GATE & BARRIER APPLICATIONS

79.0551.02 20190204

BEA, Inc.
RIDC Park West
100 Enterprise Drive
Pittsburgh, PA 15275-1213

Customer Service: 800.523.2462
Technical Support: 800.407.4545

