

# MAGLOCKS

## ECONOMICAL ELECTROMAGNETIC LOCK WITHOUT TIME DELAY



### PRIMARY APPLICATIONS



### DESCRIPTION

BEA's Non UL Listed Maglocks are part of the portfolio of request to exit products, including presence sensors, power supplies, heavy duty piezoelectric devices, illuminated buttons, access keypads and other peripheral devices.

These locks provide a low voltage solution ideal for hotels, office buildings and low-risk security egress control. They are intended for indoor applications and dry environments.

BEA's Non UL Listed Maglocks are available in standard surface mount, single and double door configurations with holding forces of 600 or 1,200 lbs. All models include a lock status sensor with visible LED. A 100 lb surface mount single/cabinet maglock is also available for low holding force applications.

### FEATURES & BENEFITS

- Lock status sensor with visible LED (not available on 100 lb models)
- Lock status sensor offers either normally open (NO) or normally closed (NC) output configurations (not available on 100 lb models)
- Input voltage of 12/24 VDC
- Variety of mounting hardware available
- Available in access control packages with sensor logic, module actuator, power supply and maglock
- This solution is tested and certified with all other BEA request to exit devices, including maglocks, sensors, logic modules, power supplies and other peripherals
- Backed by BEA's Technical Support Specialists, excellent customer service and BEA's Sensor Integration School.



BEA, Inc.  
RIDC Park West  
100 Enterprise Drive  
Pittsburgh, PA 15275-1213

Customer Service: 800.523.2462  
Technical Support: 800.407.4545  
www.BEAinc.com

**RELATED REQUEST TO EXIT PRODUCTS**



R2E-100



FLY KIT



BR3 LOGIC MODULE



ACTUATORS



ELECTRIC STRIKES



POWER SUPPLIES

**TECHNICAL SPECIFICATIONS**

**10MAGLIFELOCK9**

<b>Door Configuration</b>	Single/Cabinet, surface mount
<b>Holding Force</b>	100 lbs
<b>Input Voltage</b>	12/24 VDC
<b>Current Draw</b>	120 mA @ 12 VDC 60 mA @ 24 VDC
<b>Dimensions</b>	2.76 in x 1.40 in x 0.79 in

**10MAGLOCK3**

<b>Door Configuration</b>	Single, surface mount
<b>Holding Force</b>	600 lbs
<b>Input Voltage</b>	12/24 VDC
<b>Current Draw</b>	.40 A @ 12 VDC .20 A @ 24 VDC
<b>Dimensions</b>	9.84 in x 1.85 in x 1.02 in

**10MAGLOCK6**

<b>Door Configuration</b>	Double, surface mount
<b>Holding Force</b>	600 lbs
<b>Input Voltage</b>	12/24 VDC
<b>Current Draw</b>	.83 A @ 12 VDC .42 A @ 24 VDC
<b>Dimensions</b>	19.76 in x 1.85 in x 1.02 in

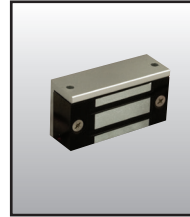
**10MAGLOCK1**

<b>Door Configuration</b>	Single, surface mount
<b>Holding Force</b>	1200 lbs
<b>Input Voltage</b>	12/24 VDC
<b>Current Draw</b>	.52 A @ 12 VDC .25 A @ 24 VDC
<b>Dimensions</b>	10.47 in x 2.91 in x 1.58 in

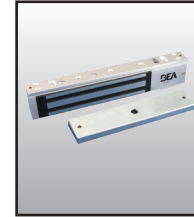
**10MAGLOCKS5**

<b>Door Configuration</b>	Double, surface mount
<b>Holding Force</b>	1200 lbs
<b>Input Voltage</b>	12/24 VDC
<b>Current Draw</b>	1.03 A @ 12 VDC .52 A @ 24 VDC
<b>Dimensions</b>	20.94 in x 2.91 in x 1.58 in

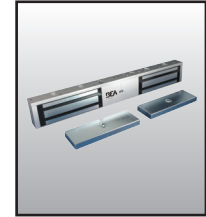
**PRODUCT FAMILY**



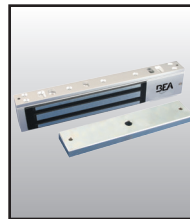
**10MAGLIFELOCK9**  
100 LB,  
CABINET LOCK



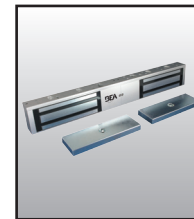
**10MAGLOCK3**  
600 LB, SINGLE



**10MAGLOCK6**  
600 LB, DOUBLE



**10MAGLOCK1**  
1200 LB, SINGLE



**10MAGLOCKS5**  
1200 LB, DOUBLE

**BEA'S COMPLETE MAGLOCK PORTFOLIO**

Maglock Portfolio	Description
<b>Non UL Series</b>	Single or Dual surface mount 100 lbs, 600 lbs and 1200 lbs 12/24 VDC
<b>UL Series</b>	Single or Dual surface mount 600 lbs and 1200 lbs 12/24 VDC Adjustable relock time display (0-9 secs) With or without Door Status Sensor
<b>UL Certified Gatelock</b>	Single, front or side mount NEMA 4 1200 lbs 12/24 VDC With or without monitoring
<b>Delayed Egress Maglock</b>	NFPA/ADA compliant kits available
<b>Request to Exit</b>	NFPA/ADA compliant kits available

