

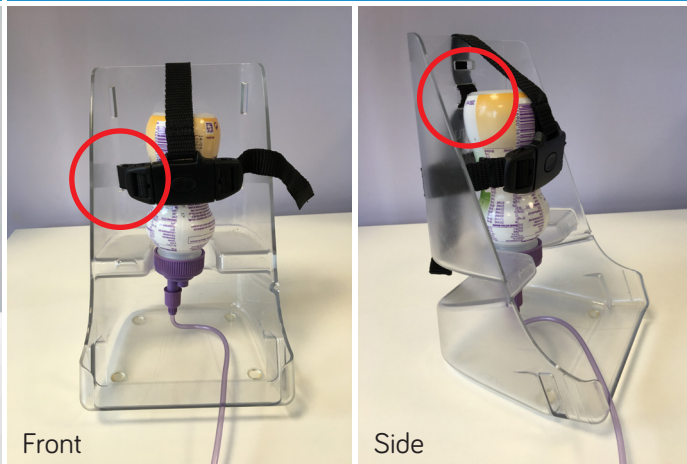
FLOCARE GO-FRAME INSTRUCTIONS FOR USE

500ml OpTri Bottle



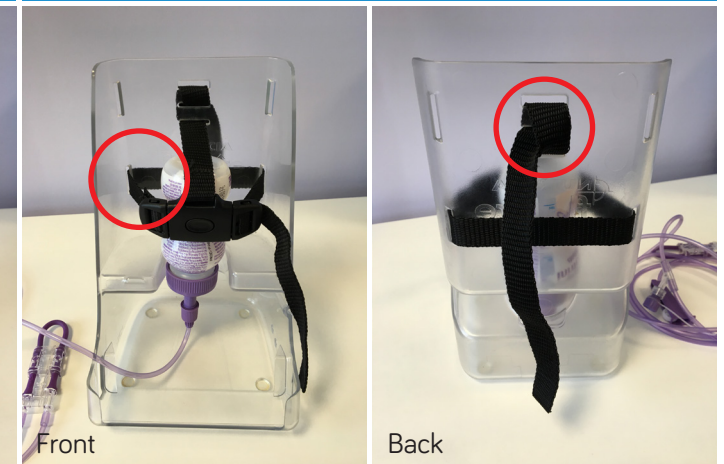
For 500ml OpTri bottles, thread the side straps through the **BOTTOM** slots of the go-frame; the top strap should be threaded as per image above.

200ml Bottle



For 200ml bottles, thread the side straps through the **BOTTOM** slots of the go-frame; the top strap should be threaded through the middle slot.

125ml Bottle



For 125ml bottles, thread the side straps through the **BOTTOM** slots of the go-frame; the top strap should be threaded as per image above.

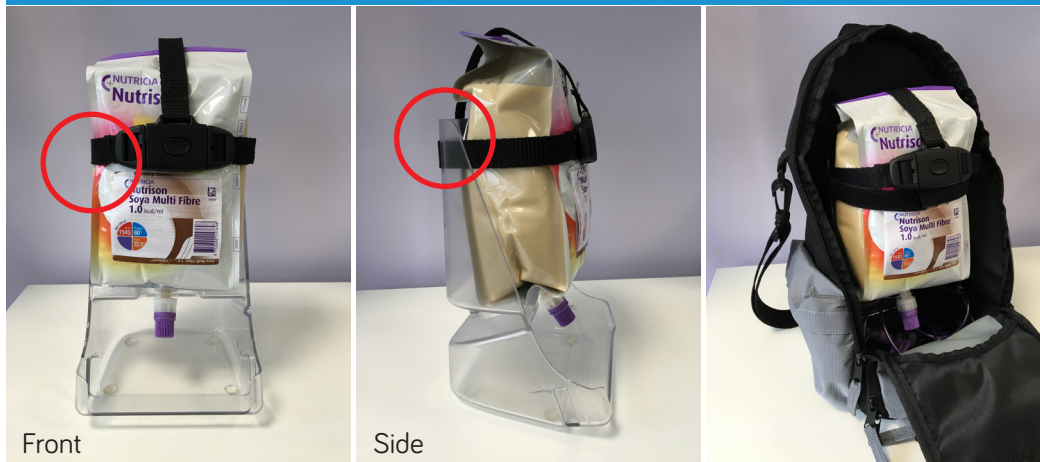
You will need a UNIVERSAL ADAPTOR alongside your giving set with any 40mm diameter bottle

Examples include Infatrini Peptisorb 200ml, Infatrini 125ml, and all Nutrini 200ml bottles.

This information is intended for patients, and carers, who have been prescribed a tube feed by a healthcare professional. All products shown are Foods for Special Medical Purposes for the dietary management of disease related malnutrition and must be used under medical supervision.

FLOCARE GO-FRAME INSTRUCTIONS FOR USE

1500ml Pack



Front

Side

1000ml OpTri Bottle



Front

Back

For 1500ml Packs, thread all straps through the **TOP** slots of the go-frame.

For 1000ml OpTri bottles, thread all straps through the **TOP** slots of the go-frame.