

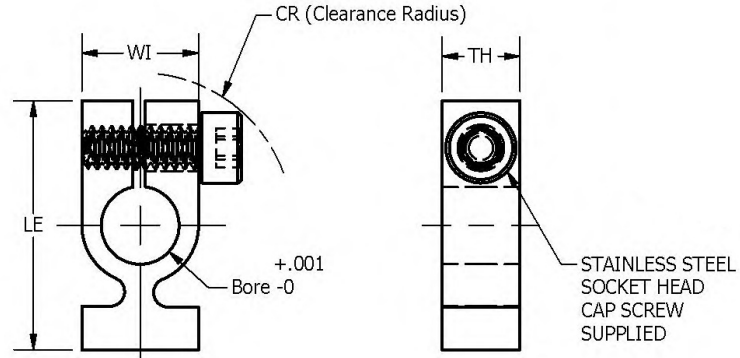
SH4

# COMPONENTS

## Precision Screw Type Shaft Clamp

Inch and Metric versions

SH4



Tolerances	Suffix	Material	Finish
.XX ±.016	A	Stainless Steel 303	Clear Passivate
.XXX ±.005	H	Stainless Steel 416	RC 38-45 Passivate
Bore +.001	X	Stainless Steel 416	RC 38-45 Black Oxide
	S	Low Carbon Steel	Zinc Plated

Part Number	Suffix	Bore	WI	TH	LE	CR	Screw
SH4-2614.181	S Z	4.6mm	.312	.140	.69	.35	2-56
SH4-2614.188	S Z	.188	.312	.140	.69	.35	2-56
SH4-2614.197	S ---	5mm	.312	.140	.69	.35	2-56
SH4-2624.181	H X	4.6mm	.312	.240	.69	.42	6-32
SH4-2624.188	H X	.188	.312	.240	.69	.42	6-32
SH4-2625.181	S ---	4.6mm	.312	.250	.69	.42	6-32
SH4-2625.188	S Z	.188	.312	.250	.69	.42	6-32
SH4-2625.197	S ---	5mm	.312	.250	.69	.42	6-32
SH4-2814.251	S Z	.251	.375	.140	.80	.42	2-56
SH4-2814.260	S Z	6.6mm	.375	.140	.80	.42	2-56
SH4-2814.276	S ---	7mm	.375	.140	.80	.42	2-56
SH4-2814.290	S ---	7.6mm	.375	.140	.80	.42	2-56
SH4-2824.250	H X	.250	.375	.240	.80	.49	6-32
SH4-2824.260	H X	6.6mm	.375	.240	.80	.49	6-32
SH4-2825.251	S Z	.251	.375	.250	.80	.49	6-32
SH4-2825.260	S ---	6.6mm	.375	.250	.80	.49	6-32
SH4-2825.276	S ---	7mm	.375	.250	.80	.49	6-32
SH4-2825.290	S ---	7.6mm	.375	.250	.80	.49	6-32
SH4-3214.313	S Z	.313	.437	.140	.81	.49	2-56
SH4-3214.315	S ---	8mm	.437	.140	.81	.49	2-56
SH4-3214.339	S Z	8.6mm	.437	.140	.81	.49	2-56
SH4-3224.312	H X	.312	.437	.240	.81	.51	6-32
SH4-3224.339	H X	8.6mm	.437	.240	.81	.51	6-32

Part Number	Suffix	Bore	WI	TH	LE	CR	Screw
SH4-3224.312	H X	.312	.437	.240	.81	.51	6-32
SH4-3224.339	H X	8.6mm	.437	.240	.81	.51	6-32
SH4-3225.313	S Z	.313	.437	.250	.81	.51	6-32
SH4-3225.315	S ---	8mm	.437	.250	.81	.51	6-32
SH4-3225.339	S ---	8.6mm	.437	.250	.81	.51	6-32
SH4-3225.354	S ---	9mm	.437	.250	.81	.51	6-32
SH4-3414.376	S Z	.376	.500	.140	.87	.53	2-56
SH4-3414.378	S ---	9.6mm	.500	.140	.87	.53	2-56
SH4-3425.376	S Z	.376	.500	.250	.87	.55	6-32
SH4-3425.378	S ---	9.6mm	.500	.250	.87	.55	6-32
SH4-3425.394	S ---	10mm	.500	.250	.87	.55	6-32
SH4-4014.438	S Z	.438	.625	.140	1.03	.57	2-56
SH4-4014.457	S ---	11.6mm	.625	.140	1.03	.57	2-56
SH4-4014.472	S ---	12mm	.625	.140	1.03	.57	2-56
SH4-4014.501	S ---	.501	.625	.140	1.03	.57	2-56
SH4-4014.512	S ---	13mm	.625	.140	1.03	.57	2-56
SH4-4014.535	S ---	13.6mm	.625	.140	1.03	.57	2-56
SH4-4025.438	S Z	.438	.625	.250	1.03	.64	6-32
SH4-4025.457	S ---	11.6mm	.625	.250	1.03	.64	6-32
SH4-4025.472	S ---	12mm	.625	.250	1.03	.64	6-32
SH4-4025.501	S ---	.501	.625	.250	1.03	.64	6-32
SH4-4025.512	S ---	13mm	.625	.250	1.03	.64	6-32
SH4-4025.535	S ---	13.6mm	.625	.250	1.03	.64	6-32