

CE EMC TEST REPORT

For

Shenzhen Qi Jie Electronics Co.,Ltd

Product Name:	Beetle Clip Invisible
Trademark:	/
Model Number:	Beetle Clip Invisible
Prepared For:	Shenzhen Qi Jie Electronics Co.,Ltd
Address:	2F,1,Buiding 21th,Chuangye RD,Shilongzai Industrial Park saiyan,Baoan District,Shenzhen,GD,China
Prepared By:	Aerospace Testing Technology (Shenzhen) Co., Ltd.
Address:	3/F, Block A1, No. 5, 8th Road, Shapu Yangyong Industrial Park, Songgang Street, Bao'an District, Shenzhen, Guangdong, China
Report No.:	AST1905202020

航天检测技术（深圳）有限公司

广东省深圳市宝安区松岗街道沙浦洋涌工业区8路5号A1栋三楼

Aerospace Testing Technology (Shenzhen) Co., Ltd.

3/F, Block A1, No.5, 8th Road, Shapu Yangyong Industrial Park,

Songgang Street, Bao'an District, Shenzhen, Guangdong, China

Tel. (电话) : 0755-27781492

Fax. (传真) : 0755-27781492

Web. (网址) : www.ast-test.com

E-mail(邮箱) : ast@hangtianjc.com

TABLE OF CONTENT

	Page
Test Report Declaration	
1. GENERAL INFORMATION	5
1.1. Description of Device (EUT).....	5
1.2. Tested System Details.....	5
1.3. Test Uncertainty.....	5
1.4. Test Facility	6
2. TEST INSTRUMENT USED	7
3. CONDUCTED EMISSION AT THE MAINS TERMINALS TEST.....	10
3.1. Block Diagram Of Test Setup.....	10
3.2. Test Standard.....	10
3.3. Power Line Conducted Emission Limit.....	10
3.4. EUT Configuration on Test	10
3.5. Operating Condition of EUT	10
3.6. Test Procedure	11
3.7. Test Result	11
4. MAGNETIC EMISSION TEST	12
4.1. Block Diagram Of Test Setup.....	12
4.2. Test Standard.....	12
4.3. Power Line Conducted Emission Limit.....	12
4.4. EUT Configuration on Test	12
4.5. Operating Condition of EUT	12
4.6. Test Procedure	13
4.7. Test Result	13
5. RADIATION EMISSION TEST	17
5.1. Block Diagram of Test Setup.....	17
5.2. Test Standard.....	17
5.3. Radiation Limit.....	17
5.4. EUT Configuration on Test	17
5.5. Operating Condition of EUT	18
5.6. Test Procedure	18
5.7. Test Result	18
6. HARMONIC CURRENT EMISSION TEST	21
6.1. Block Diagram of Test Setup.....	21
6.2. Test Standard.....	21
6.3. Operating Condition of EUT	21
6.4. Test Procedure	21
6.5. Test Results	21
7. VOLTAGE FLUCTUATIONS & FLICKER TEST	22
7.1. Block Diagram of Test Setup.....	22
7.2. Test Standard.....	22
7.3. Operating Condition of EUT	22
7.4. Test Procedure	22
7.5. Test Results	22
8. ELECTROSTATIC DISCHARGE IMMUNITY TEST	23
8.1. Block Diagram of Test Setup.....	23
8.2. Test Standard.....	23
8.3. Severity Levels and Performance Criterion	23
8.4. EUT Configuration	24
8.5. Operating Condition of EUT	25

8.6. Test Procedure	25
8.7. Test Results	25
9. RF FIELD STRENGTH SUSCEPTIBILITY TEST	27
9.1. Block Diagram of Test Setup	27
9.2. Test Standard.....	27
9.3. Severity Levels and Performance Criterion	27
9.4. EUT Configuration on Test	28
9.5. Operating Condition of EUT	28
9.6. Test Procedure	29
9.7. Test Results	29
10. ELECTRICAL FAST TRANSIENT/BURST IMMUNITY TEST	30
10.1. Block Diagram of EUT Test Setup.....	30
10.2. Test Standard	30
10.3. Severity Levels and Performance Criterion	30
10.4. EUT Configuration on Test	31
10.5. Operating Condition of EUT	31
10.6. Test Procedure	31
10.7. Test Results	31
11. SURGE TEST	32
11.1. Block Diagram of EUT Test Setup	32
11.2. Test Standard.....	32
11.3. Severity Levels and Performance Criterion	32
11.4. EUT Configuration on Test	33
11.5. Operating Condition of EUT	33
11.6. Test Procedure	33
11.7. Test Result	33
12. INJECTED CURRENTS SUSCEPTIBILITY TEST.....	34
12.1. Block Diagram of EUT Test Setup.....	34
12.2. Test Standard	34
12.3. Severity Levels and Performance Criterion	34
12.4. EUT Configuration on Test	35
12.5. Operating Condition of EUT	35
12.6. Test Procedure	35
12.7. Test Result	36
13. MAGNETIC FIELD IMMUNITY TEST.....	37
13.1. Block Diagram of Test Setup.....	37
13.2. Test Standard	37
13.3. Severity Levels and Performance Criterion	37
13.4. EUT Configuration on Test	38
13.5. Operating Condition of EUT	38
13.6. Test Procedure	38
13.7. Test Results	38
14. VOLTAGE DIPS AND INTERRUPTIONS TEST	40
14.1. Block Diagram of EUT Test Setup.....	40
14.2. Test Standard	40
14.3. Severity Levels and Performance Criterion	40
14.4. EUT Configuration on Test	41
14.5. Operating Condition of EUT	41
14.6. Test Procedure	41
14.7. Test Result	41
15. EUT PHOTOGRAPHS	42

Aerospace Testing Technology (Shenzhen) Co., Ltd.

Applicant : Shenzhen Qi Jie Electronics Co.,Ltd
Address : 2F,1,Buiding 21th,Chuangye RD,Shilongzai Industrial Park
saiyan,Baoan District,Shenzhen,GD,China
Manufacturer : Shenzhen Qi Jie Electronics Co.,Ltd
Address : 2F,1,Buiding 21th,Chuangye RD,Shilongzai Industrial Park
saiyan,Baoan District,Shenzhen,GD,China
EUT : Beetle Clip Invisible
Model Number : Beetle Clip Invisible
Trademark : /
Test Date : Sep 30, 2020 - Oct 13, 2020
Date Of Report : Oct 13, 2020
Test Result : The equipment under test was found to be compliance with the requirements of the standards applied.

Test Procedure Used:

EMI : EN IEC 55015:2019
EN IEC 61000-3-2:2019, EN 61000-3-3:2013+A1:2019
EMS : EN 61547:2009
EN 61000-4-2:2009, EN 61000-4-3:2006+A2:2010, EN 61000-4-4:2012,
EN 61000-4-5:2014+A1:2017, EN 61000-4-6:2014+AC:2015,
EN 61000-4-8:2010, EN 61000-4-11:2004+A1:2017

Tested Engineer : Mason
Reviewed Supervisor : Lucas
Authorized Signatory : Thomas

Mason

Lucas

Thomas



This test report is based on a single evaluation of one sample of above mentioned products. It is not permitted to be duplicated in extracts without written approval of Aerospace Testing Technology (Shenzhen) Co., Ltd.

1. GENERAL INFORMATION

1.1. Description of Device (EUT)

EUT : Beetle Clip Invisible

Trademark : /

Model Number : Beetle Clip Invisible

Model Difference : /

Power Supply Range : DC 36V 5.5A

Test Power Supply : DC 36V

Note: /

1.2. Tested System Details

None.

1.3. Test Uncertainty

Conducted Emission Uncertainty : $\pm 2.66\text{dB}$

Radiated Emission Uncertainty : $\pm 4.26\text{dB}$

1.4. Test Facility

Site Description

Name of Firm : Aerospace Testing Technology (Shenzhen) Co., Ltd.

Site Location : 3/F, Block A1, No. 5, 8th Road, Shapu Yangyong Industrial Park, Songgang Street, Bao'an District, Shenzhen, Guangdong, China

2. TEST INSTRUMENT USED

For Conducted Emission At The Mains Terminals Test

Conducted Emission Test (A --- site)					
Equipment	Manufacturer	Model#	Serial#	Last Cal.	Next Cal.
843 Shielded Room	ChengYu	843 Room	843	Aug. 24, 2020	Aug. 23, 2021
EMI Receiver	R&S	ESCI	101421	Aug. 24, 2020	Aug. 23, 2021
LISN	Schwarzbeck	NLSK8127	8127739	Aug. 24, 2020	Aug. 23, 2021
Attenuator	R&S	ESH3-Z2	AST021E	Aug. 24, 2020	Aug. 23, 2021
843 Cable 1#	FUJIKURA	843C1#	001	Aug. 24, 2020	Aug. 23, 2021

For Magnetic Emission Test

Conducted Emission Test (A --- site)					
Equipment	Manufacturer	Model#	Serial#	Last Cal.	Next Cal.
843 Shielded Room	ChengYu	843 Room	843	Aug. 24, 2020	Aug. 23, 2021
EMI Receiver	R&S	ESCI	101421	Aug. 24, 2020	Aug. 23, 2021
Three-loop antenna	DAZE	ZN30401	13017	Aug. 24, 2020	Aug. 23, 2021
Attenuator	R&S	ESH3-Z2	AST021E	Aug. 24, 2020	Aug. 23, 2021
843 Cable 2#	FUJIKURA	843C1#	002	Aug. 24, 2020	Aug. 23, 2021

For Radiated Emission Test

Radiation Emission Test (966 chamber)					
Equipment	Manufacturer	Model#	Serial#	Last Cal.	Next Cal.
966 chamber	ChengYu	966 Room	966	Aug. 24, 2020	Aug. 23, 2021
Spectrum Analyzer	Agilent	E4407B	MY45109572	Aug. 24, 2020	Aug. 23, 2021
Amplifier	Schwarzbeck	BBV9743	9743-119	Aug. 24, 2020	Aug. 23, 2021
Amplifier	Schwarzbeck	BBV9718	9718-270	Aug. 24, 2020	Aug. 23, 2021
Log-periodic Antenna	Schwarzbeck	VULB9160	VULB9160-3369	Aug. 24, 2020	Aug. 23, 2021
EMI Receiver	R&S	ESCI	101421	Aug. 24, 2020	Aug. 23, 2021
Horn Antenna	Schwarzbeck	BBHA9120D	9120D-1275	Aug. 24, 2020	Aug. 23, 2021
966 Cable 1#	CHENGYU	966	004	Aug. 24, 2020	Aug. 23, 2021
966 Cable 2#	CHENGYU	966	003	Aug. 24, 2020	Aug. 23, 2021

For Harmonic & Flicker Test

For Harmonic / Flicker Test (A --- site)					
Equipment	Manufacturer	Model#	Serial#	Last Cal.	Next Cal.
Harmonic / Flicker Analyzer	KIKUSUI	KHA1000	VA002445	Aug. 24, 2020	Aug. 23, 2021
AC Power Supply	KIKUSUI	PCR4000M	UK001879	Aug. 24, 2020	Aug. 23, 2021
Line Impedance network	KIKUSUI	LIN1020JF	UL001611	Aug. 24, 2020	Aug. 23, 2021

For Electrostatic Discharge Immunity Test

For Electrostatic Discharge Immunity Test (A --- site)					
Equipment	Manufacturer	Model#	Serial#	Last Cal.	Next Cal.
ESD Tester	KIKUSUI	KES4201A	UH002321	Aug. 24, 2020	Aug. 23, 2021

For RF Field Strength Susceptibility Test(SMQ)

For RF Field Strength Susceptibility Test (SMQ --- site)					
Equipment	Manufacturer	Model#	Serial#	Last Cal.	Next Cal.
Signal Generator	HP	8648A	3625U00573	Aug. 24, 2020	Aug. 23, 2021
Amplifier	A&R	500A100	17034	Aug. 24, 2020	Aug. 23, 2021
Amplifier	A&R	100W/1000M1	17028	Aug. 24, 2020	Aug. 23, 2021
Audio Analyzer (20Hz~1GHz)	Panasonic	2023B	202301/428	Aug. 24, 2020	Aug. 23, 2021
Isotropic Field Probe	A&R	FP2000	16755	Aug. 24, 2020	Aug. 23, 2021
Antenna	EMCO	3108	9507-2534	Aug. 24, 2020	Aug. 23, 2021
Log-periodic Antenna	A&R	AT1080	16812	Aug. 24, 2020	Aug. 23, 2021

For Electrical Fast Transient /Burst Immunity Test

For Electrical Fast Transient/Burst Immunity Test (A --- site)					
Equipment	Manufacturer	Model#	Serial#	Last Cal.	Next Cal.
Burst Tester	Prima	EFT61004AG	PR14054467	Aug. 24, 2020	Aug. 23, 2021
Coupling Clamp	Prima	EFT61004AG	AST009E	Aug. 24, 2020	Aug. 23, 2021

For Surge Test

For Surge Test (A --- site)					
Equipment	Manufacturer	Model#	Serial#	Last Cal.	Next Cal.
Surge Tester	Prima	SUG61005BX	PR12045446	Aug. 24, 2020	Aug. 23, 2021

For Injected Currents Susceptibility Test

For Injected Currents Susceptibility Test (A --- site)					
Equipment	Manufacturer	Model#	Serial#	Last Cal.	Next Cal.
C/S Test System	SCHLODER	CDG600	126B1281	Aug. 24, 2020	Aug. 23, 2021
CDN	SCHLODER	CDN-M2+3	A2210320/20 15	Aug. 24, 2020	Aug. 23, 2021
Injection Clamp	SCHLOBER	EMCL-20	132A1214/20 15	Aug. 24, 2020	Aug. 23, 2021

For Magnetic Field Immunity Test

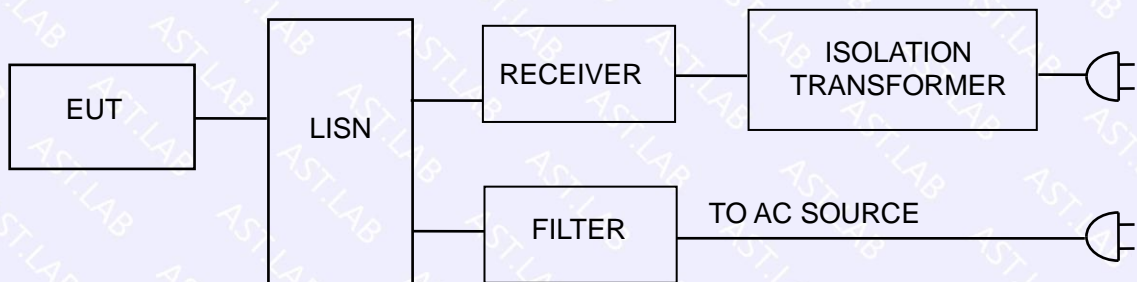
For Magnetic Field Immunity Test (A --- site)					
Equipment	Manufacturer	Model#	Serial#	Last Cal.	Next Cal.
Magnetic field generator	HTEC	HPFMF	15701	Aug. 24, 2020	Aug. 23, 2021

For Voltage Dips Interruptions Test

For Voltage Dips Interruptions Test (A --- site)					
Equipment	Manufacturer	Model#	Serial#	Last Cal.	Next Cal.
Dips Tester	Prima	DRP61011AG	PR14086284	Aug. 24, 2020	Aug. 23, 2021

3. CONDUCTED EMISSION AT THE MAINS TERMINALS TEST

3.1. Block Diagram Of Test Setup



3.2. Test Standard

EN IEC 55015:2019

3.3. Power Line Conducted Emission Limit

Frequency MHz	Limits dB(μV)	
	Quasi-peak Level	Average Level
0.009 ~ 0.05	110	N/A
0.05 ~ 0.15	90 ~ 80*	N/A
0.15 ~ 0.50	66 ~ 56*	56 ~ 46*
0.50 ~ 5.00	56	46
5.00 ~ 30.00	60	50

Notes: 1. *Decreasing linearly with logarithm of frequency.

2. The lower limit shall apply at the transition frequencies.

3.4. EUT Configuration on Test

The following equipments are installed on conducted emission test to meet EN55015 requirement and operating in a manner which tends to maximize its emission characteristics in a normal application.

3.5. Operating Condition of EUT

3.5.1 Setup the EUT and simulators as shown in Section 3.1.

3.5.2 Turn on the power of all equipments.

3.5.3 Let the EUT work in test modes and test it.

3.6. Test Procedure

The EUT is put on the ground and connected to the AC mains through a Artificial Mains Network (AMN). This provided a 50ohm coupling impedance for the tested equipments. Both sides of AC line are checked to find out the maximum conducted emission levels according to the **EN55015** regulations during conducted emission test.

The bandwidth of the test receiver (R&S Test Receiver ESCI) is set at 10KHz.

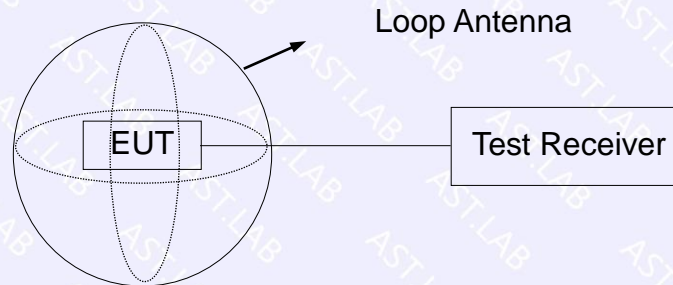
The frequency range from 150 KHz to 30 MHz is investigated.

3.7. Test Result

The EUT is supplied by DC which is not applicable for this test.

4. MAGNETIC EMISSION TEST

4.1. Block Diagram Of Test Setup



4.2. Test Standard

EN IEC 55015:2019

4.3. Power Line Conducted Emission Limit

Frequency MHz	Limits dB(μ A)
	Quasi-peak Level
0.009 ~ 0.07	88
0.07 ~ 0.15	88 ~ 58*
0.15 ~ 0.50	58 ~ 22*
0.50 ~ 5.00	22

Notes: 1. *Decreasing linearly with logarithm of frequency.

2. The lower limit shall apply at the transition frequencies.

4.4. EUT Configuration on Test

The following equipments are installed on conducted emission test to meet EN55015 requirement and operating in a manner which tends to maximize its emission characteristics in a normal application.

4.5. Operating Condition of EUT

4.5.1 Setup the EUT and simulators as shown in Section 4.1.

4.5.2 Turn on the power of all equipments.

4.5.3 Let the EUT work in test modes and test it.

4.6. Test Procedure

The EUT is placed on a wood table in the center of a loop antenna. The induced current in the loop antenna is measured by means of a current probe and the test receiver. Three field components is checked by means of a coax switch.

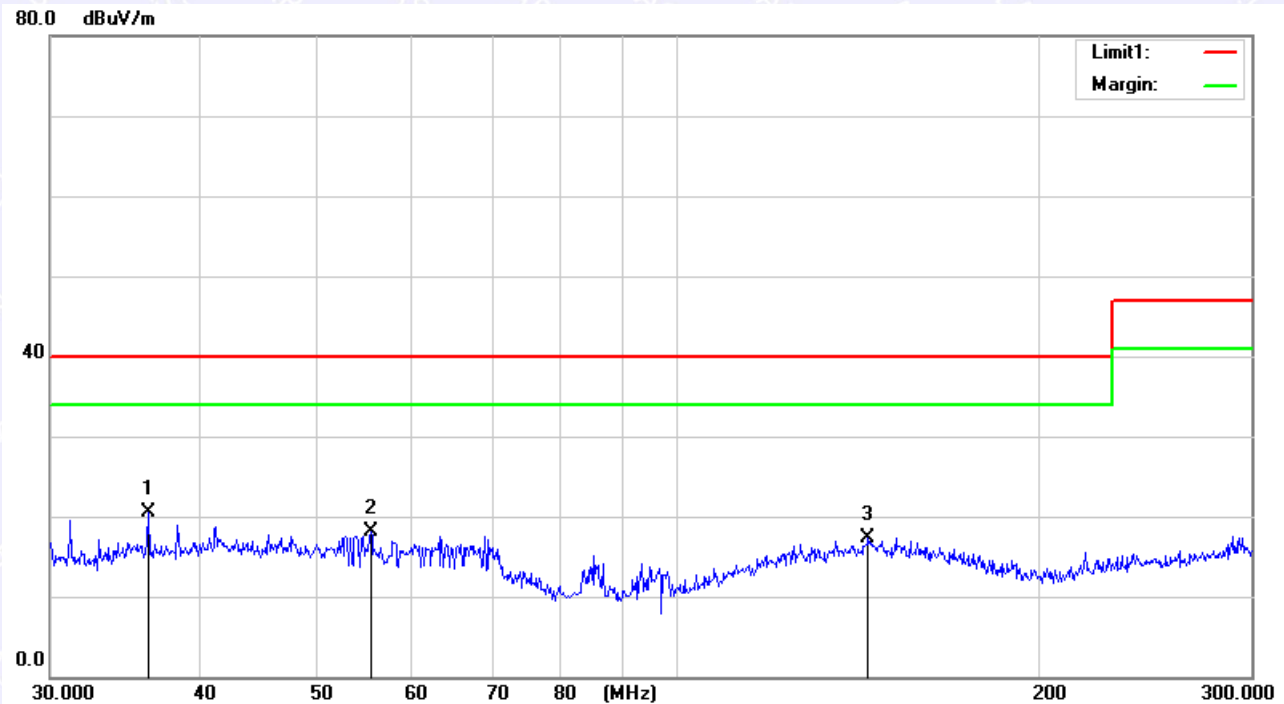
The frequency range from 9KHz to 30MHz is investigated. The receiver is measured with the quasi-peak detector. For frequency band 9KHz to 150KHz, the bandwidth of the field strength meter (R&S Test Receiver ESCI) is set at 200Hz. For frequency band 150KHz to 30MHz, the bandwidth is set at 10KHz.

4.7. Test Result

PASS

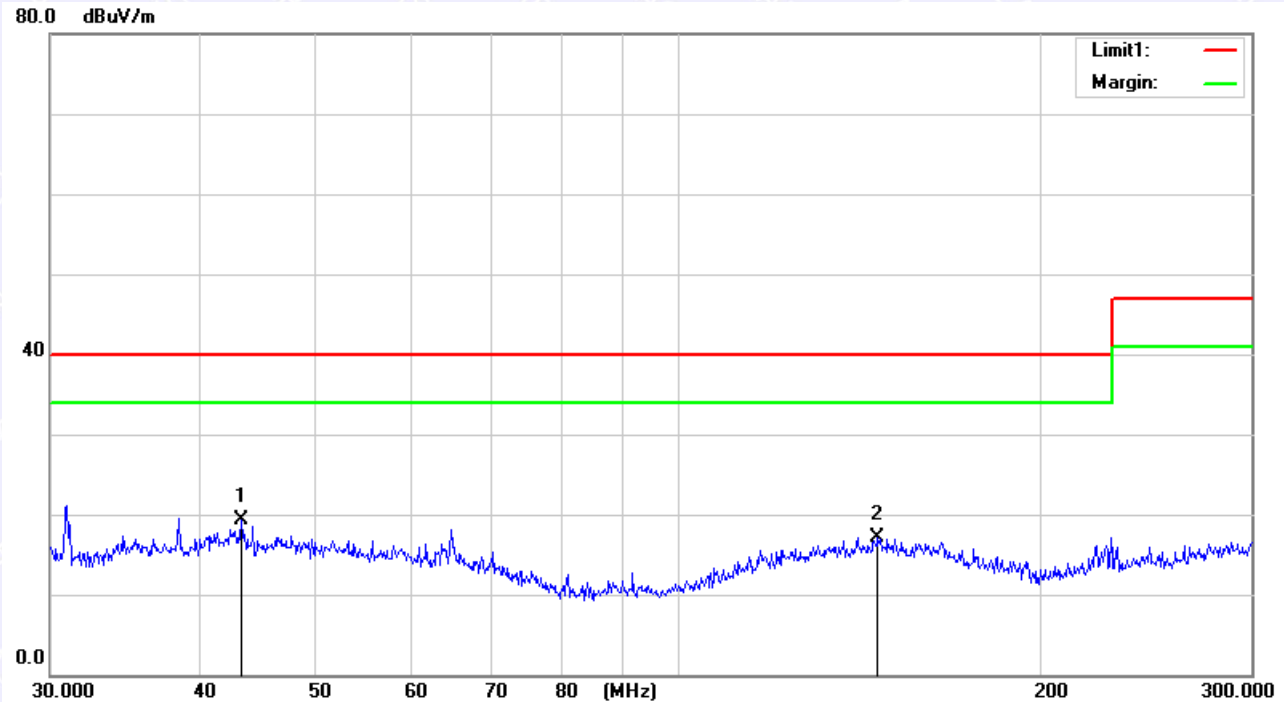
Please refer to the following page.

Magnetic Emission Test Data			
Temperature:	24.5 °C	Relative Humidity:	54%
Pressure:	1009hPa	Ant. Polarity	X
Test Voltage:	DC 36V	Test Mode:	ON Mode



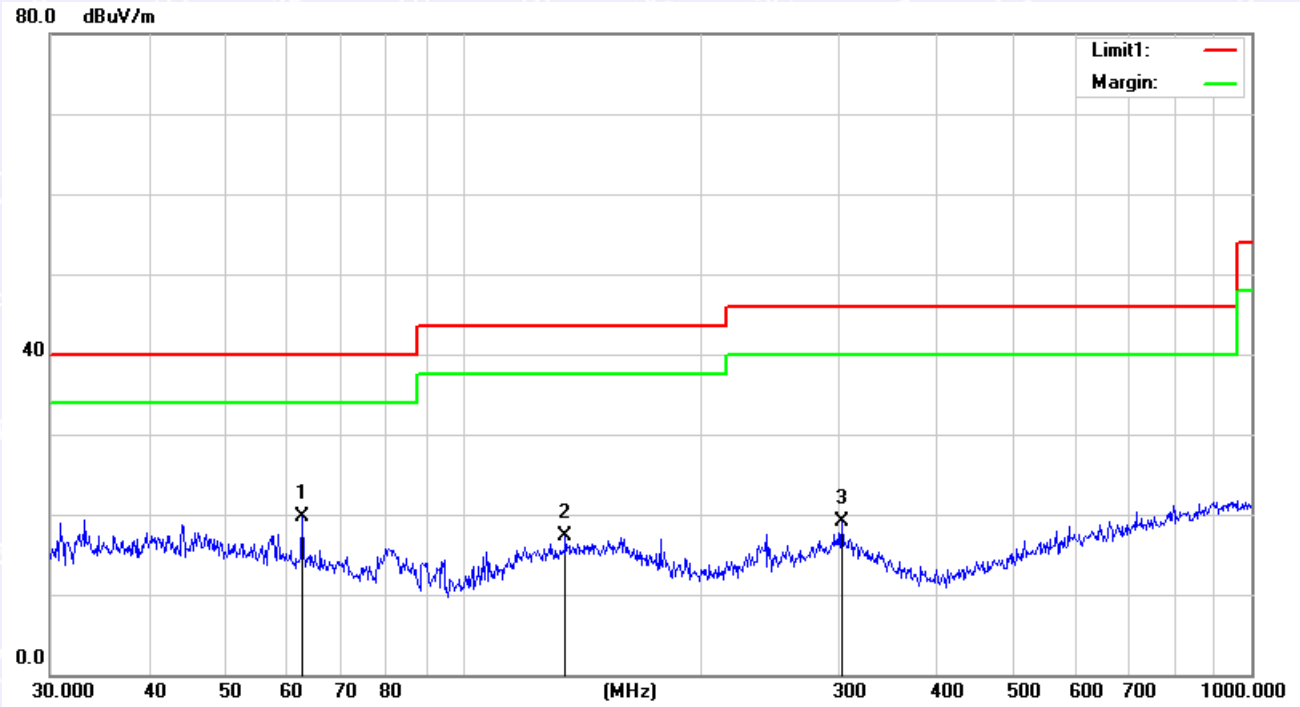
No.	Mk.	Freq. MHz	Reading Level dBuV	Correct Factor dB	Measure- ment dBuV/m	Limit dB/m	Over dB	Detector	Comment
1	*	36.2344	30.05	-9.56	20.49	40.00	-19.51	peak	
2		55.4780	28.40	-10.24	18.16	40.00	-21.84	peak	
3		143.9199	26.50	-9.14	17.36	40.00	-22.64	peak	

Magnetic Emission Test Data			
Temperature:	24.5 °C	Relative Humidity:	54%
Pressure:	1009hPa	Ant. Polarity	Y
Test Voltage:	DC 36V	Test Mode:	ON Mode



No.	Mk.	Freq. MHz	Reading Level dBuV	Correct Factor dB	Measure- ment dBuV/m	Limit dB/m	Over dB	Detector	Comment
1	*	43.2635	28.51	-9.23	19.28	40.00	-20.72	peak	
2		146.5956	26.23	-9.09	17.14	40.00	-22.86	peak	

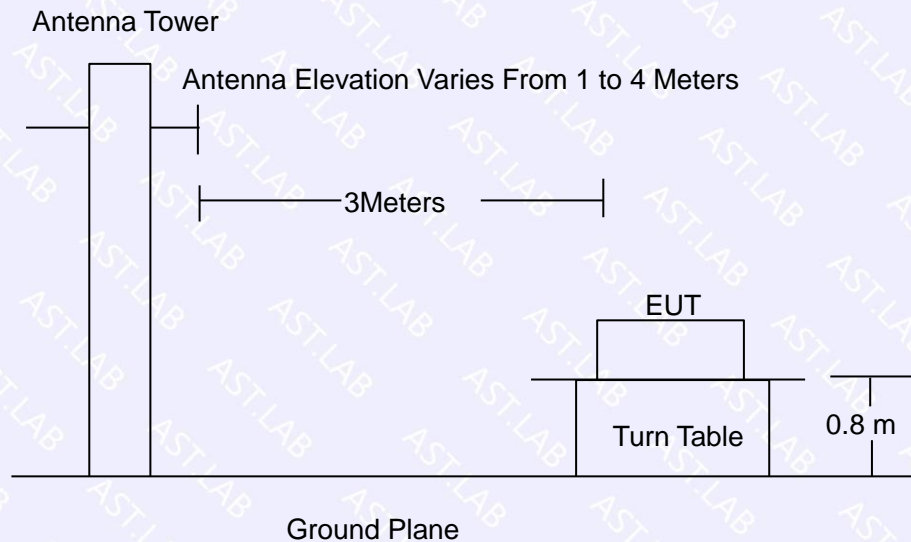
Magnetic Emission Test Data			
Temperature:	24.5 °C	Relative Humidity:	54%
Pressure:	1009hPa	Ant. Polarity	Z
Test Voltage:	DC 36V	Test Mode:	ON Mode



No.	Mk.	Freq. MHz	Reading Level dBuV	Correct Factor dB	Measure- ment dBuV/m	Limit dB/m	Over dB	Detector	Comment
1	*	62.6507	30.80	-11.07	19.73	40.00	-20.27	peak	
2		135.0319	26.88	-9.54	17.34	43.50	-26.16	peak	
3		302.4812	34.83	-15.64	19.19	46.00	-26.81	peak	

5. RADIATION EMISSION TEST

5.1. Block Diagram of Test Setup



5.2. Test Standard

EN IEC 55015:2019

5.3. Radiation Limit

Frequency MHz	Distance (Meters)	Field Strengths Limits dB(μ V)/m
30 ~ 230	3	40.0
230 ~ 300	3	47.0

Remark:

- (1) Emission level (dB(μ V)/m) = 20 log Emission level (μ V/m)
- (2) The smaller limit shall apply at the cross point between two frequency bands.
- (3) Distance refers to the distance in meters between the measuring instrument, antenna and the closed point of any part of the device or system.

5.4. EUT Configuration on Test

The EN55015 regulations test method must be used to find the maximum emission during radiated emission test.

The configuration of EUT is the same as used in conducted emission test. Please refer to Section 2.2.

5.5. Operating Condition of EUT

Same as conducted emission test, which is listed in Section 2.2 except the test set up replaced as Section 4.1.

5.6. Test Procedure

The EUT and its simulators are placed on a turned table that is 0.8 meter above the ground. The turned table can rotate 360 degrees to determine the position of the maximum emission level. The EUT is set 3 meters away from the receiving antenna that is mounted on the antenna tower. The antenna can move up and down between 1 meter and 4 meters to find out the maximum emission level. Broadband antenna (calibrated biconical and log periodical antenna) is used as receiving antenna. Both horizontal and vertical polarization of the antenna is set on test. In order to find the maximum emission levels, the interface cable must be manipulated according to EN55015 on radiated emission test.

The bandwidth setting on the field strength meter (R&S Test Receiver ESCI) is set at 120KHz.

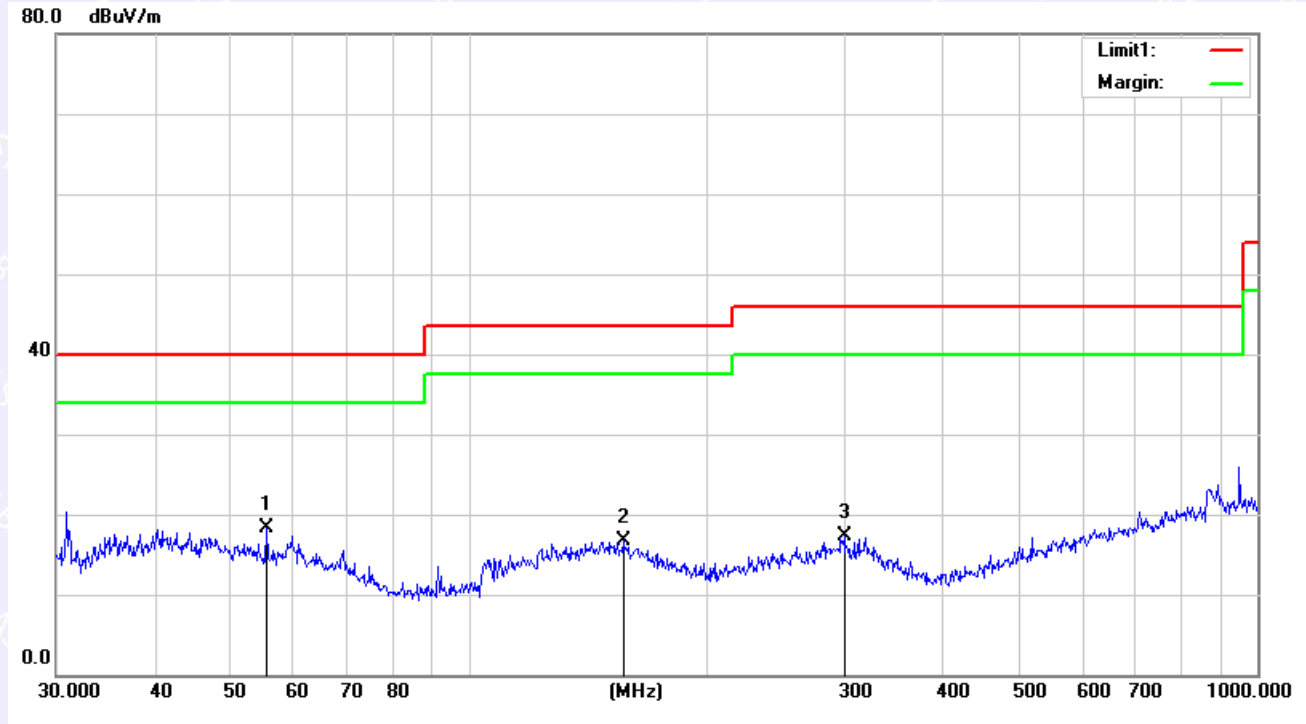
The frequency range from 30MHz to 300MHz is checked.

5.7. Test Result

PASS

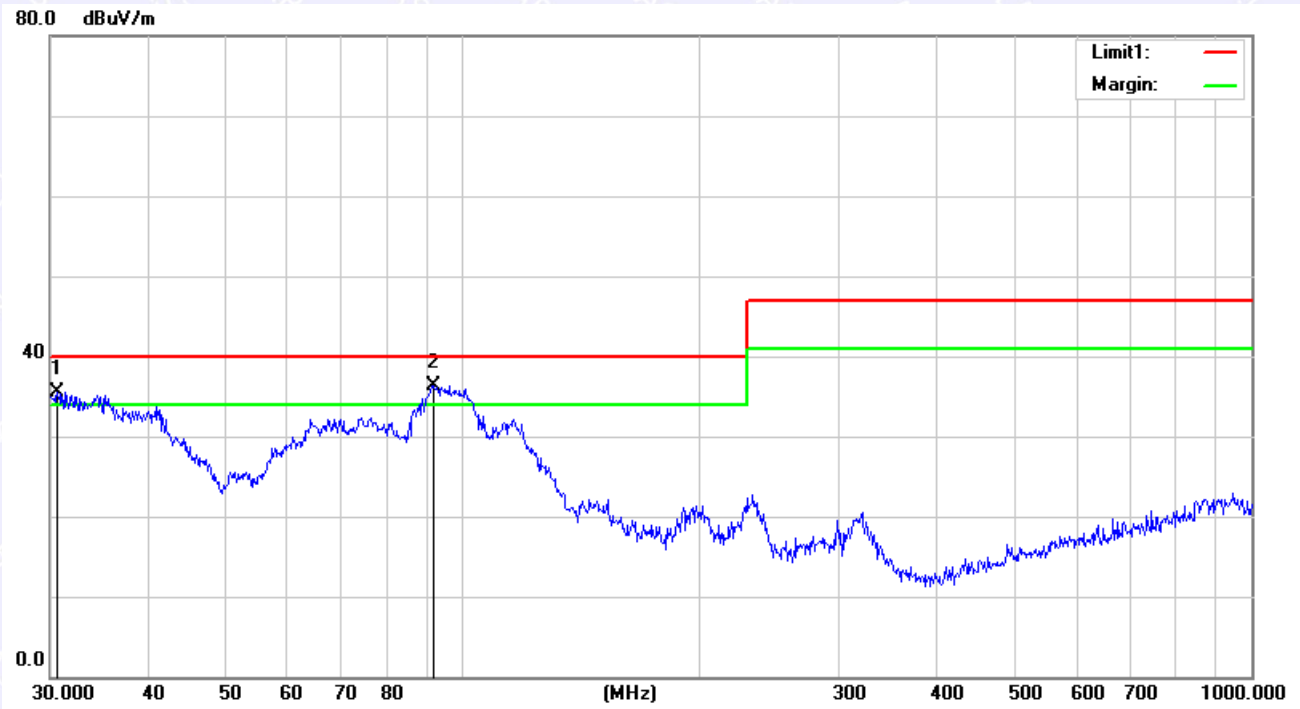
Please refer to the following page.

Radiation Emission Test Data			
Temperature:	24.5 °C	Relative Humidity:	54%
Pressure:	1009hPa	Phase:	Horizontal
Test Voltage:	DC 36V	Test Mode:	ON Mode



No.	Mk.	Freq. MHz	Reading Level dBuV	Correct Factor dB	Measure- ment dBuV/m	Limit dB/m	Over dB	Detector	Comment
1	*	55.4147	28.62	-10.24	18.38	40.00	-21.62	peak	
2		157.0074	25.64	-8.89	16.75	43.50	-26.75	peak	
3		299.3158	25.93	-8.71	17.22	46.00	-28.78	peak	

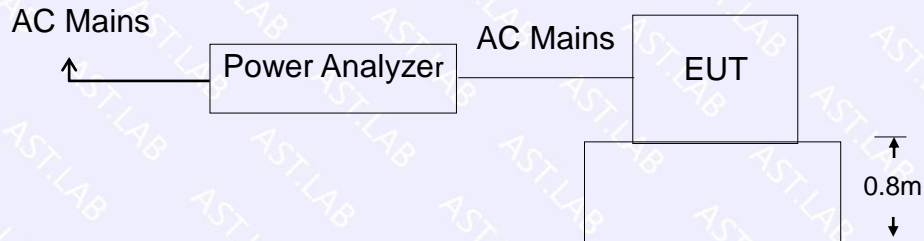
Radiation Emission Test Data			
Temperature:	24.5 °C	Relative Humidity:	54%
Pressure:	1009hPa	Phase:	Vertical
Test Voltage:	DC 36V	Test Mode:	ON Mode



No.	Mk.	Freq.	Reading Level	Correct Factor	Measurement	Limit	Over		
		MHz	dBuV	dB	dBuV/m	dB/m	dB	Detector	Comment
1	!	30.6378	45.90	-10.40	35.50	40.00	-4.50	peak	
2	*	91.8162	50.98	-14.59	36.39	40.00	-3.61	peak	

6. HARMONIC CURRENT EMISSION TEST

6.1. Block Diagram of Test Setup



6.2. Test Standard

EN IEC 61000-3-2:2019

6.3. Operating Condition of EUT

- 6.3.1 Setup the EUT as shown in Section 6.1.
- 6.3.2 Turn on the power of all equipments.
- 6.3.3 Let the EUT work in test mode and test it.

6.4. Test Procedure

The power cord of the EUT is connected to the output of the test system. Turn on the power of the EUT and use the test system to test the harmonic current level.

6.5. Test Results

PASS

Please refer to the following page.

There is no need for Harmonic current test to be performed on this product (rated power is less than 75 W) in accordance with EN 61000-3-2.

For further details, please refer to Clause 7 of EN 61000-3-2 which states:

“For the following categories of equipment, limits are not specified in this standard:

- equipment with a rated power of 75 W or less, other than lighting equipment.”

7. VOLTAGE FLUCTUATIONS & FLICKER TEST

7.1. Block Diagram of Test Setup

Same as Section 6.1..

7.2. Test Standard

EN 61000-3-3:2013+A1:2019

7.3. Operating Condition of EUT

Same as Section 5.3.. The power cord of the EUT is connected to the output of the test system. Turn on the power of the EUT and use the test system to test the harmonic current level.

Flicker Test Limit

Test items	Limits
Pst	1.0
dc	3.3%
dmax	4.0%
dt	Not exceed 3.3% for 500ms

7.4. Test Procedure

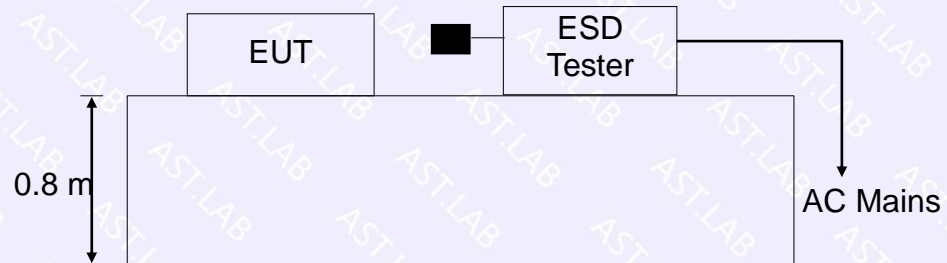
The power cord of the EUT is connected to the output of the test system. Turn on the power of the EUT and use the test system to test the harmonic current level.

7.5. Test Results

The EUT is supplied by DC which is not applicable for this test.

8. ELECTROSTATIC DISCHARGE IMMUNITY TEST

8.1. Block Diagram of Test Setup



8.2. Test Standard

EN 61547:2009, EN 61000-4-2:2009

Severity Level: 3 / Air Discharge: $\pm 8\text{KV}$

Level: 2 / Contact Discharge: $\pm 4\text{KV}$

8.3. Severity Levels and Performance Criterion

8.3.1 Severity level

Level	Test Voltage Contact Discharge (KV)	Test Voltage Air Discharge (KV)
1.	± 2	± 2
2.	± 4	± 4
3.	± 6	± 8
4.	± 8	± 15
X	Special	Special

8.3.2 Performance criterion : B

- A. The equipment shall continue to operate as intended without operator intervention. No degradation of performance or loss of function is allowed below a performance level specified by the manufacturer when the equipment is used as intended. The performance level may be replaced by a permissible loss of performance. If the minimum performance level or the permissible performance loss is not specified by the manufacturer, then either of these may be derived from the product description and documentation, and by what the user may reasonably expect from the equipment if used as intended.
- B. After the test, the equipment shall continue to operate as intended without operator intervention. No degradation of performance or loss of function is allowed, after the application of the phenomena below a performance level specified by the manufacturer, when the equipment is used as intended. The performance level may be replaced by a permissible loss of performance.

During the test, degradation of performance is allowed. However, no change of operating state or stored data is allowed to persist after the test.

If the minimum performance level (or the permissible performance loss) is not specified by the manufacturer, then either of these may be derived from the product description and documentation, and by what the user may reasonably expect from the equipment if used as intended.

- C. Loss of function is allowed, provided the function is self-recoverable, or can be restored by the operation of the controls by the user in accordance with the manufacturer's instructions. Functions, and/or information stored in non-volatile memory, or protected by a battery backup, shall not be lost.

8.4.EUT Configuration

The following equipments are installed on Electrostatic Discharge Immunity test to meet EN 61547:2009, EN 61000-4-2:2009, requirement and operating in a manner which tends to maximize its emission characteristics in a normal application. The configuration of EUT is the same as used in conducted emission test.

Please refer to Section 2.4.

8.5. Operating Condition of EUT

Same as conducted emission measurement, which is listed in Section 3.5 except the test setup replaced by Section 8.1.

8.6. Test Procedure

8.6.1 Air Discharge:

This test is done on a non-conductive surface. The round discharge tip of the discharge electrode shall be approached as fast as possible to touch the EUT. After each discharge, the discharge electrode shall be removed from the EUT. The generator is then re-triggered for a new single discharge and repeated 10 times for each pre-selected test point. This procedure shall be repeated until all the air discharge completed.

8.6.2 Contact Discharge:

All the procedure shall be same as Section 8.6.1. Except that the tip of the discharge electrode shall touch the EUT before the discharge switch is operated.

8.6.3 Indirect discharge for horizontal coupling plane

At least 10 single discharges (in the most sensitive polarity) shall be applied at the front edge of each HCP opposite the center point of each unit (if applicable) of the EUT and 0.1m from the front of the EUT. The long axis of the discharge electrode shall be in the plane of the HCP and perpendicular to its front edge during the discharge.

8.6.4 Indirect discharge for vertical coupling plane

At least 10 single discharges (in the most sensitive polarity) shall be applied to the center of one vertical edge of the coupling plane. The coupling plane, of dimensions 0.5m X 0.5m, is placed parallel to, and positioned at a distance of 0.1m from the EUT. Discharges shall be applied to the coupling plane, with this plane in sufficient different positions that the four faces of the EUT are complete illuminated.

8.7. Test Results

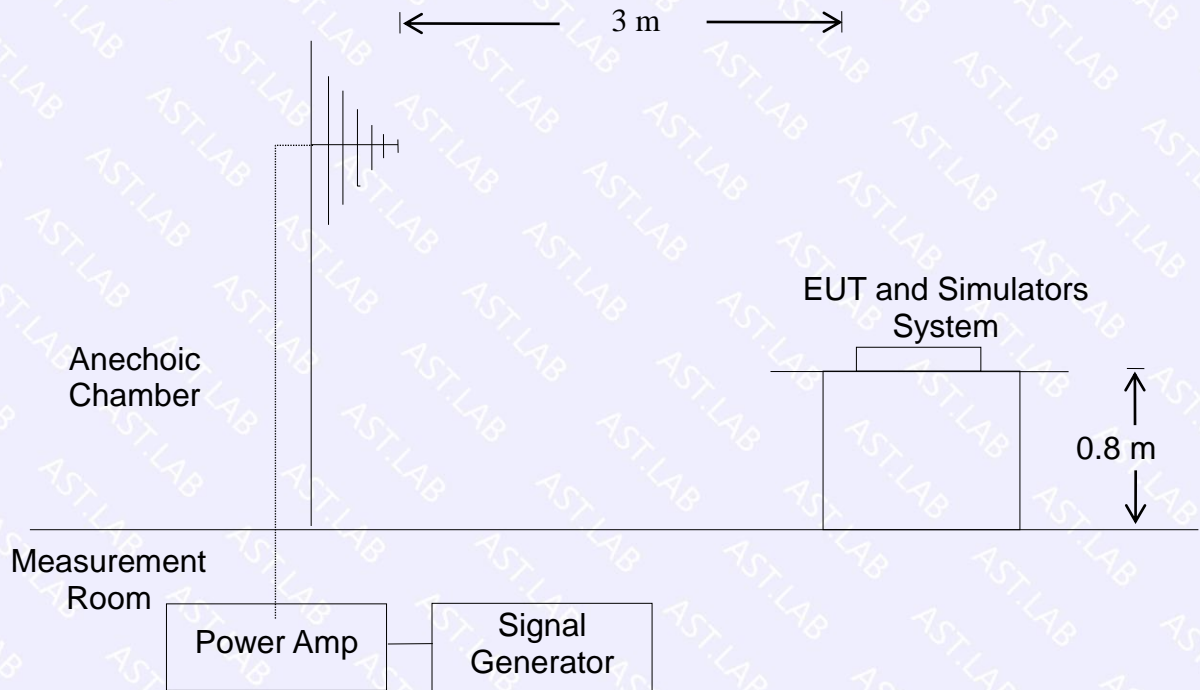
PASS

Please refer to the following page.

ESD Test Data				
Temperature:	24.5°C	Humidity:	53%	
Power Supply:	DC 36V	Test Mode:	On	
Air Discharge: ± 8KV				
Contact Discharge: ± 4KV				
Test Points	Air Discharge	Contact Discharge	Performance Criterion	Result
Enclosure	±2,4,8KV	N/A	B	PASS
Slit	±2,4,8KV	N/A	B	PASS
Metal Part	N/A	±2,4 KV	B	PASS
VCP	N/A	±2,4 KV	B	PASS
HCP	N/A	±2,4 KV	B	PASS
Note: N/A				

9. RF FIELD STRENGTH SUSCEPTIBILITY TEST

9.1. Block Diagram of Test Setup



9.2. Test Standard

EN 61547:2009, EN 61000-4-3:2006+A2:2010
Severity Level 2, 3V / m

9.3. Severity Levels and Performance Criterion

9.3.1. Severity level

Level	Field Strength V/m
1.	1
2.	3
3.	10
X.	Special

9.3.2. Performance criterion: A

- A、 The equipment shall continue to operate as intended without operator intervention. No degradation of performance or loss of function is allowed below a performance level specified by the manufacturer when the equipment is used as intended. The performance level may be replaced by a permissible loss of performance. If the minimum performance level or the permissible performance loss is not specified by the manufacturer, then either of these may be derived from the product description and documentation, and by what the user may reasonably expect from the equipment if used as intended.
- B、 After the test, the equipment shall continue to operate as intended without operator intervention. No degradation of performance or loss of function is allowed, after the application of the phenomena below a performance level specified by the manufacturer, when the equipment is used as intended. The performance level may be replaced by a permissible loss of performance.

During the test, degradation of performance is allowed. However, no change of operating state or stored data is allowed to persist after the test.

If the minimum performance level (or the permissible performance loss) is not specified by the manufacturer, then either of these may be derived from the product description and documentation, and by what the user may reasonably expect from the equipment if used as intended.

- C、 Loss of function is allowed, provided the function is self-recoverable, or can be restored by the operation of the controls by the user in accordance with the manufacturer's instructions. Functions, and/or information stored in non-volatile memory, or protected by a battery backup, shall not be lost.

9.4.EUT Configuration on Test

The following equipments are installed on Electrical Fast Transient/Burst Immunity test to meet EN 61547:2009, EN 61000-4-4:2012, requirement and operating in a manner which tends to maximize its emission characteristics in a normal application. The configuration of EUT is the same as used in conducted emission test.

Please refer to Section 3.4.

9.5.Operating Condition of EUT

Same as conducted emission measurement, which is listed in Section 2.5 except the test setup replaced by Section 9.1.

9.6. Test Procedure

The EUT and its simulators are placed on a turn table which is 0.8 meter above ground. EUT is set 3 meter away from the transmitting antenna which is mounted on an antenna tower. Both horizontal and vertical polarization of the antenna are set on test. Each of the four sides of EUT must be faced this transmitting antenna and measured individually.

All the scanning conditions are as follows :

Condition of Test	Remarks
1. Fielded Strength	3 V/m (Severity Level 2)
2. Radiated Signal	Modulated
3. Scanning Frequency	80 – 1000 MHz
4. Dwell time of radiated	0.0015 decade/s
5. Waiting Time	1 Sec.

9.7. Test Results

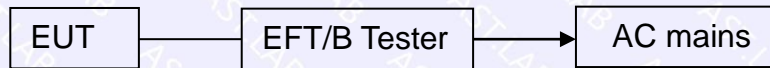
PASS

Please refer to the following page.

R/S Test Data			
Temperature: 25°C		Humidity: 53%	
Field Strength: 3 V/m		Criterion: A	
Power Supply: DC 36V		Frequency Range: 80 MHz to 1000 MHz	
Modulation: <input checked="" type="checkbox"/> AM <input type="checkbox"/> Pulse <input type="checkbox"/> none 1 KHz 80%			
Test Mode : On			
Frequency Range : 80-1000MHz			
1 %			
Steps	Horizontal	Vertical	Result
Front	A	A	Pass
Right	A	A	Pass
Rear	A	A	Pass
Left	A	A	Pass
Note: N/A			

10. ELECTRICAL FAST TRANSIENT/BURST IMMUNITY TEST

10.1. Block Diagram of EUT Test Setup



10.2. Test Standard

EN 61547:2009, EN 61000-4-4:2012

10.3. Severity Levels and Performance Criterion

Severity Level 2 at 1KV, Pulse Rise time & Duration: 5 nS / 50 nS

Severity Level:

Open Circuit Output Test Voltage $\pm 10\%$		
Level	On power ports	On I/O(Input/Output) Signal data and control ports
1.	0.5KV	0.25KV
2.	1KV	0.5KV
3.	2KV	1KV
4.	4KV	2KV
X.	Special	Special

Performance criterion: B

A. The equipment shall continue to operate as intended without operator intervention. No degradation of performance or loss of function is allowed below a performance level specified by the manufacturer when the equipment is used as intended. The performance level may be replaced by a permissible loss of performance. If the minimum performance level or the permissible performance loss is not specified by the manufacturer, then either of these may be derived from the product description and documentation, and by what the user may reasonably expect from the equipment if used as intended.

B. After the test, the equipment shall continue to operate as intended without operator intervention. No degradation of performance or loss of function is allowed, after the application of the phenomena below a performance level specified by the manufacturer, when the equipment is used as intended. The performance level may be replaced by a permissible loss of performance.

During the test, degradation of performance is allowed. However, no change of operating state or stored data is allowed to persist after the test.

If the minimum performance level (or the permissible performance loss) is not specified by the manufacturer, then either of these may be derived from the product description and documentation, and by what the user may reasonably expect from the equipment if used as intended.

- C. Loss of function is allowed, provided the function is self-recoverable, or can be restored by the operation of the controls by the user in accordance with the manufacturer's instructions. Functions, and/or information stored in non-volatile memory, or protected by a battery backup, shall not be lost.

10.4. EUT Configuration on Test

The following equipments are installed on Electrical Fast Transient/Burst Immunity test to meet EN 61547:2009, EN 61000-4-4:2012, requirement and operating in a manner which tends to maximize its emission characteristics in a normal application. The configuration of EUT is the same as used in conducted emission test. Please refer to Section 3.4.

10.5. Operating Condition of EUT

Same as conducted emission measurement, which is listed in Section 2.6 except the test setup replaced by Section 10.1.

10.6. Test Procedure

EUT shall be placed 0.8m high above the ground reference plane which is a min.1m*1m metallic sheet with 0.65mm minimum thickness. This reference ground plane shall project beyond the EUT by at least 0.1m on all sides and the minimum distance between EUT and all other conductive structure, except the ground plane beneath the EUT, shall be more than 0.5m

10.6.1. For input and output AC power ports:

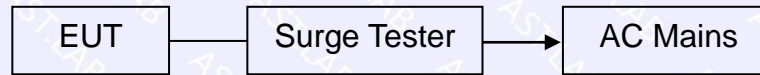
The EUT is connected to the power mains by using a coupling device which couples the EFT interference signal to AC power lines. Both polarities of the test voltage should be applied during compliance test and the duration of the test is 2 minutes.

10.7. Test Results

The EUT is supplied by DC which is not applicable for this test.

11. SURGE TEST

11.1. Block Diagram of EUT Test Setup



11.2. Test Standard

EN 61547:2009, EN 61000-4-5:2014+A1:2017

11.3. Severity Levels and Performance Criterion

Severity Level: Line to Line, Level 2 at 1KV;

Severity Level: Line to Earth, Level 3 at 2KV.

Severity Level	Open-Circuit Test Voltage (KV)
1.	0.5
2.	1.0
3.	2.0
4.	4.0
X.	Special

Performance criterion: B

- A. The equipment shall continue to operate as intended without operator intervention. No degradation of performance or loss of function is allowed below a performance level specified by the manufacturer when the equipment is used as intended. The performance level may be replaced by a permissible loss of performance. If the minimum performance level or the permissible performance loss is not specified by the manufacturer, then either of these may be derived from the product description and documentation, and by what the user may reasonably expect from the equipment if used as intended.
- B. After the test, the equipment shall continue to operate as intended without operator intervention. No degradation of performance or loss of function is allowed, after the application of the phenomena below a performance level specified by the manufacturer, when the equipment is used as intended. The performance level may be replaced by a permissible loss of performance.

During the test, degradation of performance is allowed. However, no change of operating state or stored data is allowed to persist after the test.

If the minimum performance level (or the permissible performance loss) is not specified by the manufacturer, then either of these may be derived from the product description and documentation, and by what the user may reasonably expect from the equipment if used as intended.

- C. Loss of function is allowed, provided the function is self-recoverable, or can be restored by the operation of the controls by the user in accordance with the manufacturer's instructions. Functions, and/or information stored in non-volatile memory, or protected by a battery backup, shall not be lost.

11.4. EUT Configuration on Test

The following equipments are installed on Electrical Fast Transient/Burst Immunity test to meet EN 61547:2009, EN 61000-4-5:2014+A1:2017, requirement and operating in a manner which tends to maximize its emission characteristics in a normal application

The configuration of EUT is the same as used in conducted emission test. Please refer to Section 3.4.

11.5. Operating Condition of EUT

Same as conducted emission measurement, which is listed in Section 2.7 except the test setup replaced by Section 10.1.

11.6. Test Procedure

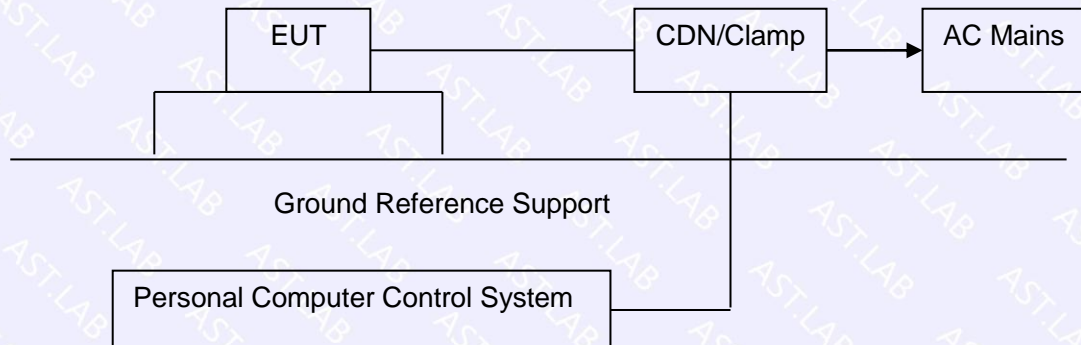
- 1) Set up the EUT and test generator as shown on section 11.1
- 2) For line to line coupling mode, provide a 1KV 1.2/50us voltage surge (at open-circuit condition) and 8/20us current surge to EUT selected points.
- 3) At least 5 positive and 5 negative (polarity) tests with a maximum 1/min repetition rate are conducted during test.
- 4) Different phase angles are done individually.
- 5) Repeat procedure 2) to 4) except the open-circuit test voltage change from 1KV to 2KV for line to earth coupling mode test.
- 6) Record the EUT operating situation during compliance test and decide the EUT immunity criterion for above each test.

11.7. Test Result

The EUT is supplied by DC which is not applicable for this test.

12. INJECTED CURRENTS SUSCEPTIBILITY TEST

12.1. Block Diagram of EUT Test Setup



12.2. Test Standard

EN 61547:2009, EN 61000-4-6:2014+AC:2015

12.3. Severity Levels and Performance Criterion

Severity Level 2: 3V(rms), 150KHz ~ 80MHz

Severity Level:

Level	Field Strength V
1.	1
2.	3
3.	10
X.	Special

Performance criterion: A

- A. The equipment shall continue to operate as intended without operator intervention. No degradation of performance or loss of function is allowed below a performance level specified by the manufacturer when the equipment is used as intended. The performance level may be replaced by a permissible loss of performance. If the minimum performance level or the permissible performance loss is not specified by the manufacturer, then either of these may be derived from the product description and documentation, and by what the user may reasonably expect from the equipment if used as intended.

- B. After the test, the equipment shall continue to operate as intended without operator intervention. No degradation of performance or loss of function is allowed, after the application of the phenomena below a performance level specified by the manufacturer, when the equipment is used as intended. The performance level may be replaced by a permissible loss of performance.

During the test, degradation of performance is allowed. However, no change of operating state or stored data is allowed to persist after the test.

If the minimum performance level (or the permissible performance loss) is not specified by the manufacturer, then either of these may be derived from the product description and documentation, and by what the user may reasonably expect from the equipment if used as intended.

- C. Loss of function is allowed, provided the function is self-recoverable, or can be restored by the operation of the controls by the user in accordance with the manufacturer's instructions. Functions, and/or information stored in non-volatile memory, or protected by a battery backup, shall not be lost.

12.4. EUT Configuration on Test

The configuration of EUT is the same as used in conducted emission test. Please refer to Section 2.8.

12.5. Operating Condition of EUT

Same as conducted emission test, which is listed in Section 2.8 except the test set up replaced as Section 12.1.

12.6. Test Procedure

- 1) Set up the EUT, CDN and test generator as shown on section 12.1
- 2) Let EUT work in test mode and measure.
- 3) The EUT and supporting equipments are placed on an insulating support 0.1m high above a ground reference plane. CDN (coupling and decoupling device) is placed on the ground plane at above 0.1-0.3m from EUT. Cables between CDN and EUT are as short as possible, and their height above the ground reference plane shall be between 30 and 50 mm (where possible).
- 4) The disturbance signal described below is injected to EUT through CDN.
- 5) The EUT operates within its operational mode(s) under intended climatic conditions after power on.

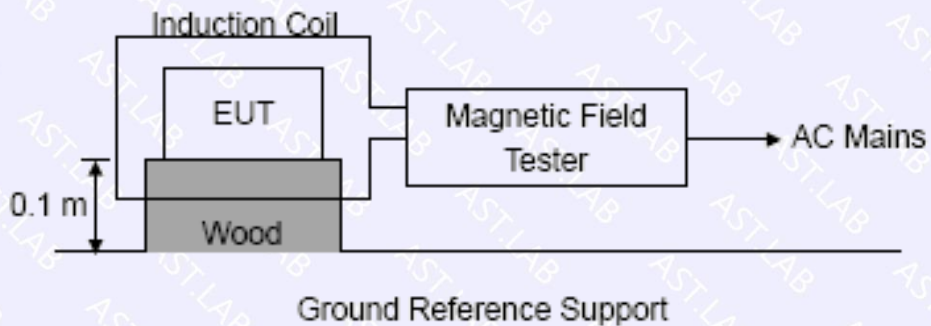
- 6) The frequency range is swept from 150KHz to 80MHz using 3V signal level, and with the disturbance signal 80% amplitude modulated with a 1KHz sine wave
- 7) The rate of sweep shall not exceed 1.5×10^{-3} decades/s. Where the frequency is swept incrementally, the step size shall not exceed 1% of the start and thereafter 1% of the preceding frequency value.
- 8) Recording the EUT operating situation during compliance test and decide the EUT immunity criterion for above each test.

12.7. Test Result

The EUT is supplied by DC which is not applicable for this test.

13. MAGNETIC FIELD IMMUNITY TEST

13.1. Block Diagram of Test Setup



13.2. Test Standard

EN 61547:2009, EN 61000-4-8:2010
Severity Level 1 at 1A/m

13.3. Severity Levels and Performance Criterion

13.3.1 Severity level

Level	Magnetic Field Strength A/m
1.	1
2.	3
3.	10
4.	30
5.	100
X.	Special

13.3.2 Performance criterion: B

- A. The equipment shall continue to operate as intended without operator intervention. No degradation of performance or loss of function is allowed below a performance level specified by the manufacturer when the equipment is used as intended. The performance level may be replaced by a permissible loss of performance. If the minimum performance level or the permissible performance loss is not specified

by the manufacturer, then either of these may be derived from the product description and documentation, and by what the user may reasonably expect from the equipment if used as intended.

- B. After the test, the equipment shall continue to operate as intended without operator intervention. No degradation of performance or loss of function is allowed, after the application of the phenomena below a performance level specified by the manufacturer, when the equipment is used as intended. The performance level may be replaced by a permissible loss of performance.

During the test, degradation of performance is allowed. However, no change of operating state or stored data is allowed to persist after the test.

If the minimum performance level (or the permissible performance loss) is not specified by the manufacturer, then either of these may be derived from the product description and documentation, and by what the user may reasonably expect from the equipment if used as intended.

- C. Loss of function is allowed, provided the function is self-recoverable, or can be restored by the operation of the controls by the user in accordance with the manufacturer's instructions. Functions, and/or information stored in non-volatile memory, or protected by a battery backup, shall not be lost.

13.4. EUT Configuration on Test

The configuration of EUT is listed in Section 2.9.

13.5. Operating Condition of EUT

Same as conducted emission test, which is listed in Section 2.9 except the test set up replaced as Section 13.1.

13.6. Test Procedure

The EUT shall be subjected to the test magnetic field by using the induction coil of standard dimensions (1m*1m) and shown in Section 10.1. The induction coil shall then be rotated by 90° in order to expose the EUT to the test field with different orientations.

13.7. Test Results

PASS

Please refer to the following page.

MS Test Data					
Temperature:	24.5°C		Humidity:	53%	
Power Supply:	DC 36V		Test Mode:	On	
Environmental Phenomena	Test specification	Units	Coil Orientation	Performance Criterion	Result
Magnetic Field	3	A/m	X	A	PASS
			Y	A	PASS
			Z	A	PASS
Note: N/A					

14. VOLTAGE DIPS AND INTERRUPTIONS TEST

14.1. Block Diagram of EUT Test Setup



14.2. Test Standard

EN 61547:2009, EN 61000-4-11:2004+A1:2017

14.3. Severity Levels and Performance Criterion

Severity Level:

Input and Output AC Power Ports.

- Voltage Dips.
- Voltage Interruptions.

Environmental Phenomena	Test Specification	Units	Performance Criterion
Voltage Dips	70 10	% Reduction period	C
	0 0.5	% Reduction period	B

Performance criterion: C, B

- A. The equipment shall continue to operate as intended without operator intervention. No degradation of performance or loss of function is allowed below a performance level specified by the manufacturer when the equipment is used as intended. The performance level may be replaced by a permissible loss of performance. If the minimum performance level or the permissible performance loss is not specified by the manufacturer, then either of these may be derived from the product description and documentation, and by what the user may reasonably expect from the equipment if used as intended.
- B. After the test, the equipment shall continue to operate as intended without operator intervention. No degradation of performance or loss of function is allowed, after the application of the phenomena below a performance level specified by the manufacturer, when the equipment is used as intended. The performance level may be replaced by a permissible loss of performance.

During the test, degradation of performance is allowed. However, no change of operating state or stored data is allowed to persist after the test.

If the minimum performance level (or the permissible performance loss) is not specified by the manufacturer, then either of these may be derived from the product description and documentation, and by what the user may reasonably expect from the equipment if used as intended.

- C. Loss of function is allowed, provided the function is self-recoverable, or can be restored by the operation of the controls by the user in accordance with the manufacturer's instructions. Functions, and/or information stored in non-volatile memory, or protected by a battery backup, shall not be lost.

14.4. EUT Configuration on Test

The configuration of EUT is the same as used in conducted emission test. Please refer to Section 2.10.

14.5. Operating Condition of EUT

Same as conducted emission test, which is listed in Section 2.10 except the test set up replaced as Section 14.1.

14.6. Test Procedure

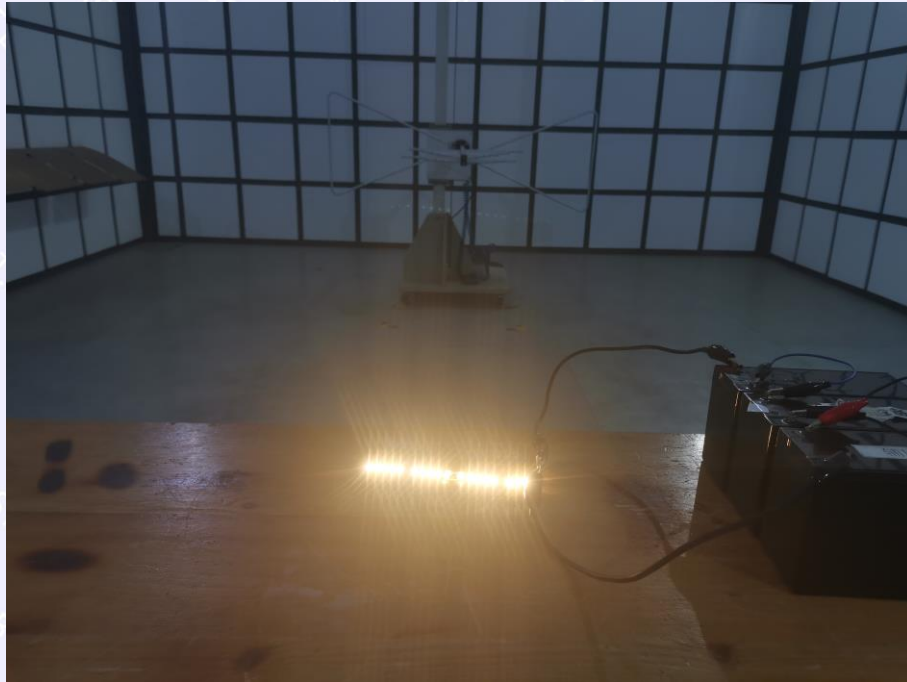
- 1) Set up the EUT and test generator as shown on section 14.1
- 2) The interruption is introduced at selected phase angles with specified duration. There is a 3mins minimum interval between each test event.
- 3) After each test a full functional check is performed before the next test.
- 4) Repeat procedures 2 & 3 for voltage dips, only the level and duration is changed.
- 5) Record any degradation of performance.

14.7. Test Result

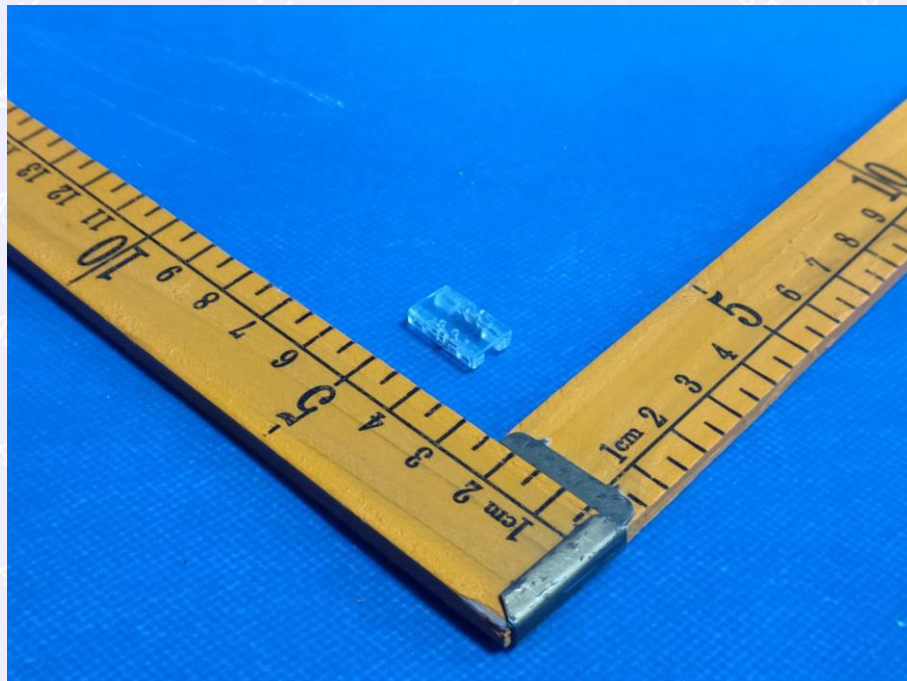
The EUT is supplied by DC which is not applicable for this test.

15. EUT PHOTOGRAPHS

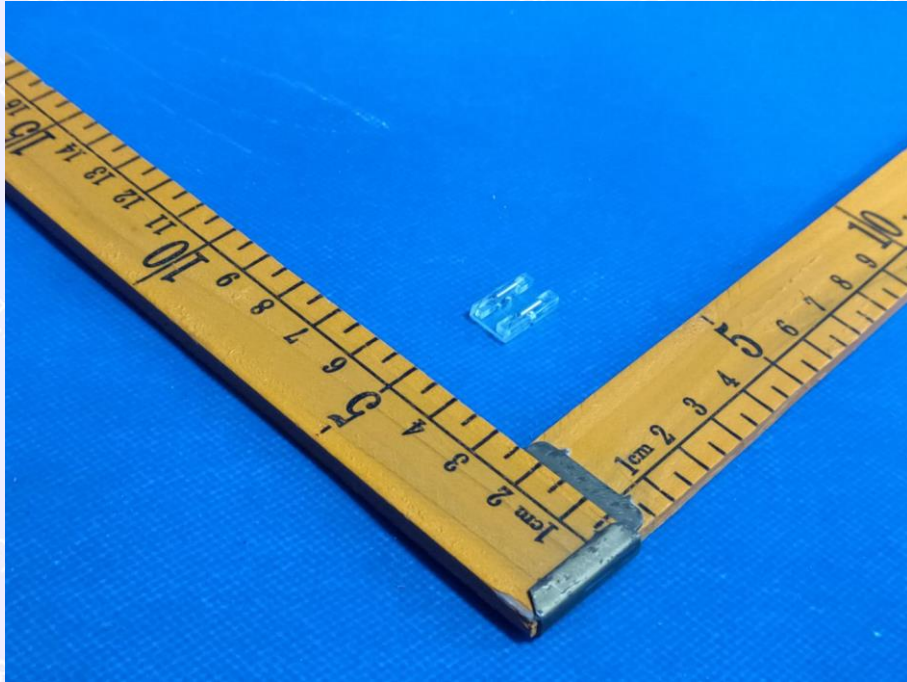
Test Photo



EUT Photo 1



EUT Photo 2



***** END OF REPORT *****