



RoHS TEST REPORT

Applicant : Shenzhen Qi Jie Electronics Co.,Ltd

Address : 2F,1,Buiding 21th,Chuangye RD,Shilongzai Industrial Park saian,Baoan District,Shenzhen,GD,China

Manufacturer : Shenzhen Qi Jie Electronics Co.,Ltd

Address : 2F,1,Buiding 21th,Chuangye RD,Shilongzai Industrial Park saian,Baoan District,Shenzhen,GD,China

The following sample(s) was / were submitted and identified on behalf of the clients as :

Sample Name : Beetle Clip Invisible

Sample Model : Beetle Clip Invisible

Model Difference : /

Trademark: /

Sample Received Date : Sep. 25, 2020

Testing Period : Sep. 25, 2020 To Oct. 15, 2020

Test Requested : Selected test(s) as requested by client

Test Method : Please refer to next page(s).

Test Result : Please refer to next page(s).

Conclusion : Based on the performed tests on submitted sample(s), the results of Lead, Mercury, Cadmium, Hexavalent chromium, Polybrominated biphenyls (PBBs), Polybrominated diphenyl ethers (PBDEs) and Phthalates such as Bis(2-ethylhexyl) phthalate (DEHP) , Butyl benzyl phthalate (BBP), Dibutyl phthalate (DBP) , and Diisobutyl phthalate (DIBP) comply with the limits as set by RoHS Directive (EU) 2015/863 amending Annex II to Directive 2011/65/EU.

Tested By: Kayla

Date: Oct. 15, 2020

Reviewed By: Megan

Date: Oct. 15, 2020

Approved By: Thomas

Date: Oct. 15, 2020



航天检测技术 (深圳) 有限公司

广东省深圳市宝安区松岗街道沙浦洋涌工业区8路5号A1栋三楼

Aerospace Testing Technology (Shenzhen) Co., Ltd.

3/F, Block A1, No.5, 8th Road, Shapu Yangyong Industrial Park,

Songgang Street, Bao'an District, Shenzhen, Guangdong, China

Tel. (电话) : 0755-27781492

Fax. (传真) : 0755-27781492

Web. (网址) : www.ast-test.com

E-mail(邮箱) : ast@hangtianjc.com

Sample Description:

No.	Name
1	TRANSPARENT PLASTIC
2	METAL

Test Result(No.1):

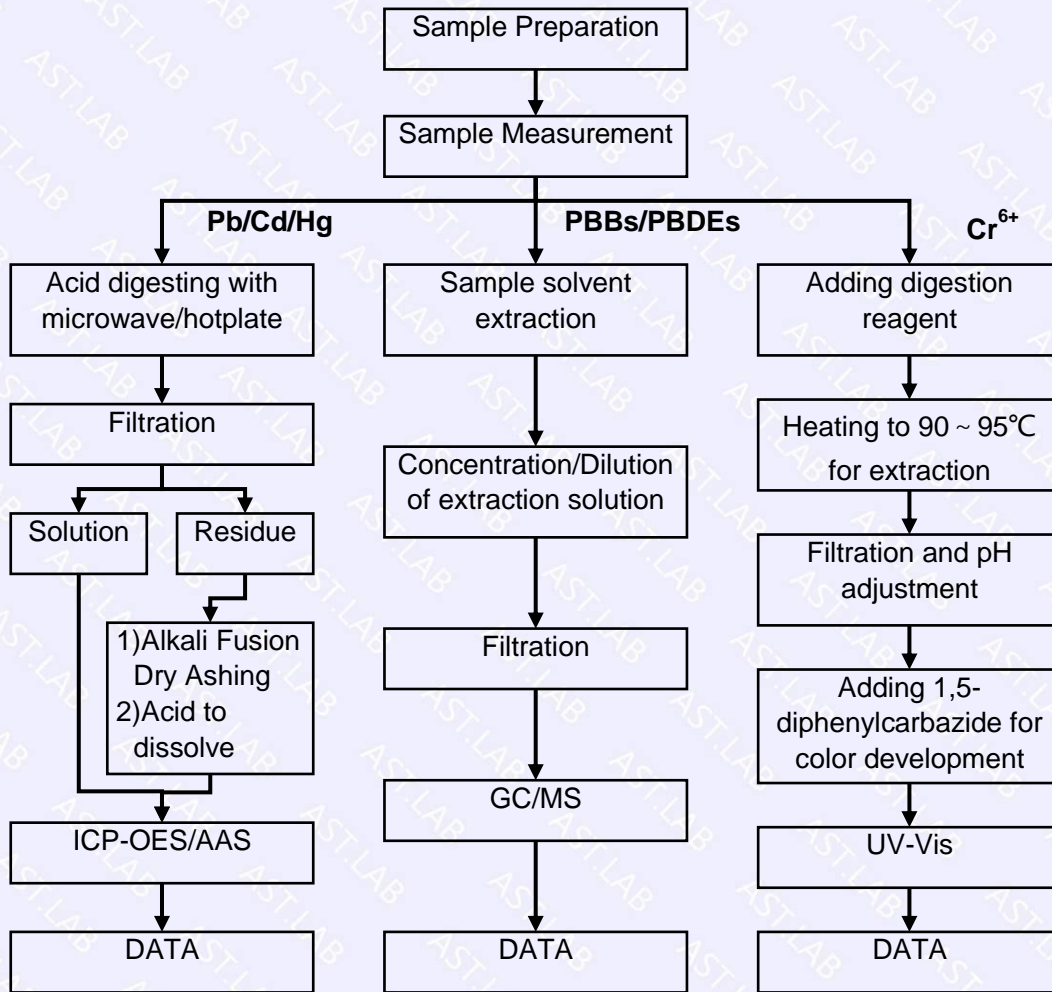
Test Item(s)	Unit	Test Method(Reference)	Result	MDL	Limit
Cadmium(Cd)	mg/kg	EN 62321-5: 2013, ICP-OES	N.D.	2	100
Lead(Pb)	mg/kg	EN 62321-5: 2013, ICP-OES	N.D.	2	1000
Mercury(Hg)	mg/kg	EN 62321-4:2013+A1:2017, ICP-OES	N.D.	2	1000
Hexavalent Chromium(CrVI)	mg/kg	EN 62321-7-1:2015, EN 62321-7-2:2017, UV-Vis	N.D.	2	1000
Sum of PBBs	mg/kg	EN 62321-6: 2015, GC-MS	N.D.	--	1000
Monobromobiphenyl	mg/kg	EN 62321-6: 2015, GC-MS	N.D.	5	--
Dibromobiphenyl	mg/kg	EN 62321-6: 2015, GC-MS	N.D.	5	--
Tribromobiphenyl	mg/kg	EN 62321-6: 2015, GC-MS	N.D.	5	--
Tetrabromobiphenyl	mg/kg	EN 62321-6: 2015, GC-MS	N.D.	5	--
Pentabromobiphenyl	mg/kg	EN 62321-6: 2015, GC-MS	N.D.	5	--
Hexabromobiphenyl	mg/kg	EN 62321-6: 2015, GC-MS	N.D.	5	--
Heptabromobiphenyl	mg/kg	EN 62321-6: 2015, GC-MS	N.D.	5	--
Octabromobiphenyl	mg/kg	EN 62321-6: 2015, GC-MS	N.D.	5	--
Nonabromobiphenyl	mg/kg	EN 62321-6: 2015, GC-MS	N.D.	5	--
Decabromobiphenyl	mg/kg	EN 62321-6: 2015, GC-MS	N.D.	5	--
Sum of PBDEs	mg/kg	EN 62321-6: 2015, GC-MS	N.D.	5	1000
Monobromodiphenyl ether	mg/kg	EN 62321-6: 2015, GC-MS	N.D.	5	--
Dibromodiphenyl ether	mg/kg	EN 62321-6: 2015, GC-MS	N.D.	5	--
Tribromodiphenyl ether	mg/kg	EN 62321-6: 2015, GC-MS	N.D.	5	--
Tetrabromodiphenyl ether	mg/kg	EN 62321-6: 2015, GC-MS	N.D.	5	--
Pentabromodiphenyl ether	mg/kg	EN 62321-6: 2015, GC-MS	N.D.	5	--
Hexabromodiphenyl ether	mg/kg	EN 62321-6: 2015, GC-MS	N.D.	5	--
Heptabromodiphenyl ether	mg/kg	EN 62321-6: 2015, GC-MS	N.D.	5	--
Octabromodiphenyl ether	mg/kg	EN 62321-6: 2015, GC-MS	N.D.	5	--
Nonabromodiphenyl ether	mg/kg	EN 62321-6: 2015, GC-MS	N.D.	5	--
--Decabromodiphenyl ether	mg/kg	EN 62321-6: 2015, GC-MS	N.D.	5	--
Dibutyl Phthalate(DBP)	mg/kg	EN 62321-8:2017, GC-MS	N.D.	50	1000
Benzylbutyl Phthalate(BBP)	mg/kg	EN 62321-8:2017, GC-MS	N.D.	50	1000
Di-(2-ethylhexyl) Phthalate(DEHP)	mg/kg	EN 62321-8:2017, GC-MS	N.D.	50	1000
Diisobutyl phthalate (DIBP)	mg/kg	EN 62321-8:2017, GC-MS	N.D.	50	1000

Test Result(No.2):

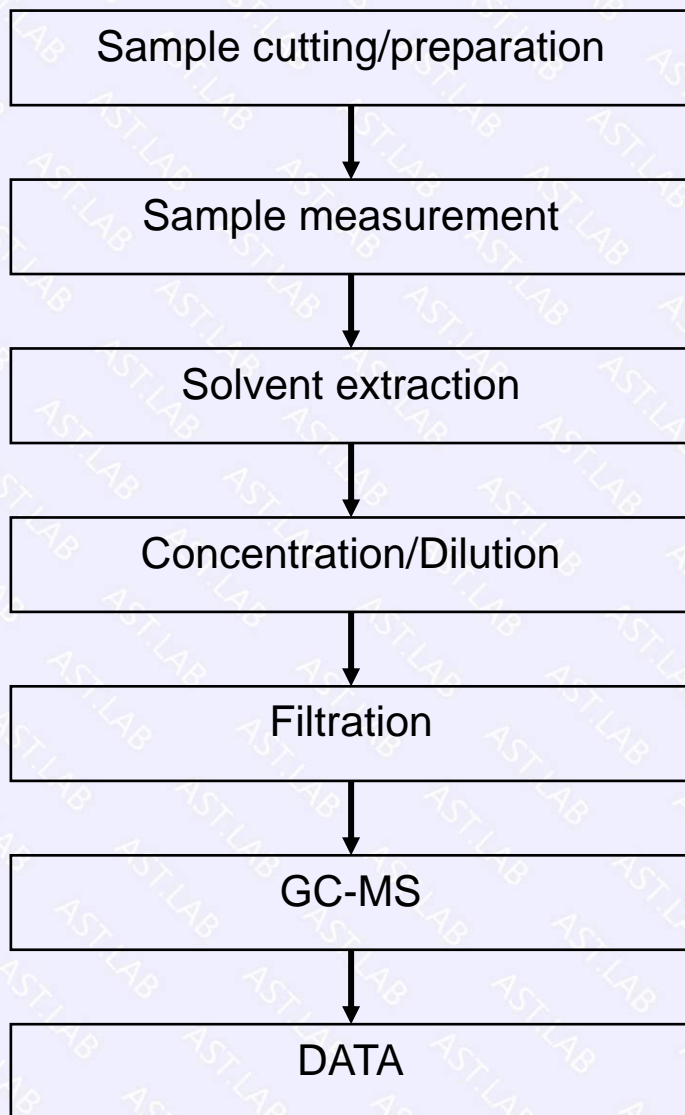
Test Item(s)	Unit	Test Method(Reference)	Result	MDL	Limit
Cadmium(Cd)	mg/kg	EN 62321-5: 2013, ICP-OES	N.D.	2	100
Lead(Pb)	mg/kg	EN 62321-5: 2013, ICP-OES	N.D.	2	1000
Mercury(Hg)	mg/kg	EN 62321-4:2013+A1:2017, ICP-OES	N.D.	2	1000
Hexavalent Chromium(CrVI)	mg/kg	EN 62321-7-1:2015, EN 62321-7-2:2017, UV-Vis	N.D.	2	1000
Sum of PBBs	mg/kg	EN 62321-6: 2015, GC-MS	N.D.	--	1000
Monobromobiphenyl	mg/kg	EN 62321-6: 2015, GC-MS	N.D.	5	--
Dibromobiphenyl	mg/kg	EN 62321-6: 2015, GC-MS	N.D.	5	--
Tribromobiphenyl	mg/kg	EN 62321-6: 2015, GC-MS	N.D.	5	--
Tetrabromobiphenyl	mg/kg	EN 62321-6: 2015, GC-MS	N.D.	5	--
Pentabromobiphenyl	mg/kg	EN 62321-6: 2015, GC-MS	N.D.	5	--
Hexabromobiphenyl	mg/kg	EN 62321-6: 2015, GC-MS	N.D.	5	--
Heptabromobiphenyl	mg/kg	EN 62321-6: 2015, GC-MS	N.D.	5	--
Octabromobiphenyl	mg/kg	EN 62321-6: 2015, GC-MS	N.D.	5	--
Nonabromobiphenyl	mg/kg	EN 62321-6: 2015, GC-MS	N.D.	5	--
Decabromobiphenyl	mg/kg	EN 62321-6: 2015, GC-MS	N.D.	5	--
Sum of PBDEs	mg/kg	EN 62321-6: 2015, GC-MS	N.D.	5	1000
Monobromodiphenyl ether	mg/kg	EN 62321-6: 2015, GC-MS	N.D.	5	--
Dibromodiphenyl ether	mg/kg	EN 62321-6: 2015, GC-MS	N.D.	5	--
Tribromodiphenyl ether	mg/kg	EN 62321-6: 2015, GC-MS	N.D.	5	--
Tetrabromodiphenyl ether	mg/kg	EN 62321-6: 2015, GC-MS	N.D.	5	--
Pentabromodiphenyl ether	mg/kg	EN 62321-6: 2015, GC-MS	N.D.	5	--
Hexabromodiphenyl ether	mg/kg	EN 62321-6: 2015, GC-MS	N.D.	5	--
Heptabromodiphenyl ether	mg/kg	EN 62321-6: 2015, GC-MS	N.D.	5	--
Octabromodiphenyl ether	mg/kg	EN 62321-6: 2015, GC-MS	N.D.	5	--
Nonabromodiphenyl ether	mg/kg	EN 62321-6: 2015, GC-MS	N.D.	5	--
--Decabromodiphenyl ether	mg/kg	EN 62321-6: 2015, GC-MS	N.D.	5	--
Dibutyl Phthalate(DBP)	mg/kg	EN 62321-8:2017, GC-MS	N.D.	50	1000
Benzylbutyl Phthalate(BBP)	mg/kg	EN 62321-8:2017, GC-MS	N.D.	50	1000
Di-(2-ethylhexyl) Phthalate(DEHP)	mg/kg	EN 62321-8:2017, GC-MS	N.D.	50	1000
Diisobutyl phthalate (DIBP)	mg/kg	EN 62321-8:2017, GC-MS	N.D.	50	1000

- Note:**
1. mg/kg= ppm
 2. N.D.= No Detection(<MDL)
 3. MDL = Method Detection Limit
 4. -- = No Testing

ATTACHMENT: Cd/Pb/Hg/Cr⁶⁺/PBBs&PBDEs Flow Chart

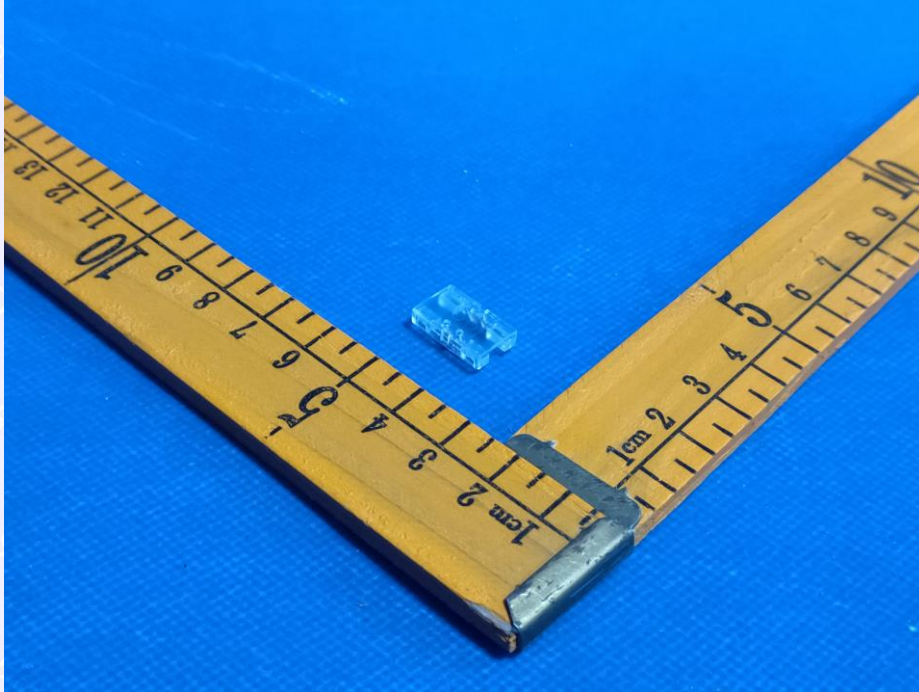


ATTACHMENT: Phthalate Testing Flow Chart

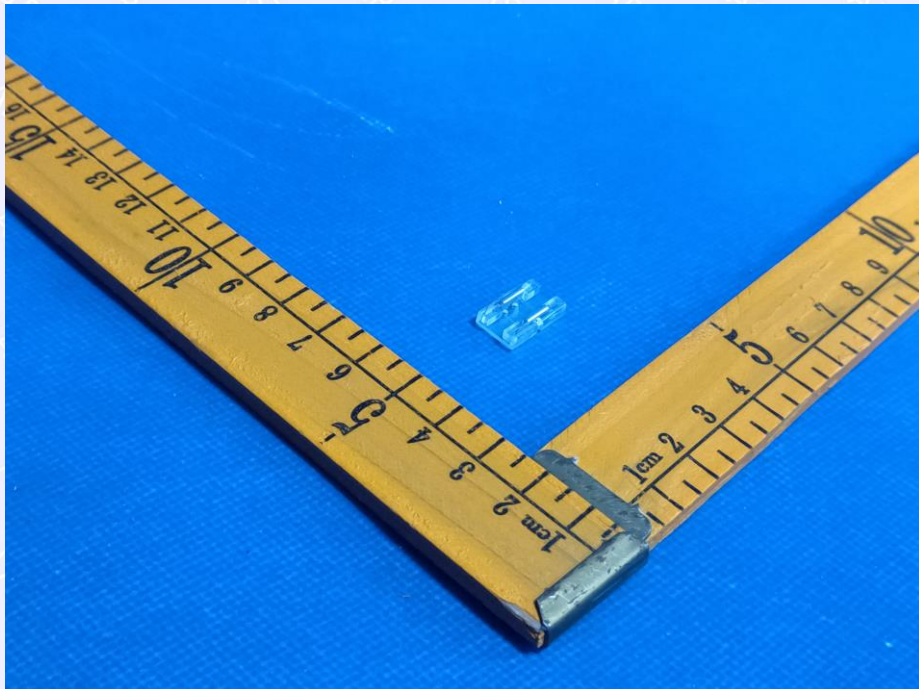


Sample photo:

EUT Photo 1



EUT Photo 2



****End of Report****