

PRODUCT OVERVIEW

# OpenText Core Capture

Transform content in the cloud to empower intelligent document processing



**Decrease IT burden with SaaS** and ensure the application is always up to date



**Boost employee productivity** and reduce time wasted on low-value tasks



**Unify and scale information capture** across departments and locations



**Simplify compliance and document access** through automatic classification

**Despite many Content Services solutions moving to cloud-based platforms, gathering and organizing content still poses a challenge for organizations. The variety of incoming content requires metadata and classification for lead applications to take advantage of cloud processing.**

OpenText™ Core Capture is an information capture public cloud Software as a Service (SaaS) application that leverages continuous machine learning to automate intelligent document classification and data extraction. Core Capture combines standard capture features, such as optical character recognition (OCR), with powerful AI technology to enable intelligent document processing and automation. Organizations can securely and efficiently route information to the right users and systems, ensuring accurate information is available when and where it is needed.

**Decrease IT burden and ensure the application is always up to date**

With the distributed nature of Core Capture, simple department-level administration can be handled without additional IT workload. A cloud-based SaaS solution, it includes automated deployment of the latest software updates and continuous machine learning capabilities.

**Boost employee productivity and reduce time wasted on low-value tasks**

Manual content tagging is inconsistent, error prone and often skipped, delaying business processes. Employees waste time searching for information and re-keying information that already exists. Recent research found that the average knowledge worker spends more than eight hours per week on these tasks.<sup>1</sup> With Core Capture, organizations can optimize workflows with automation and a simple user interface. Employees can focus on higher-value activities, such as web-based human-in-the-loop validation, to accelerate machine learning and automation.

## Services:

### OpenText™ Document Capture Services:

Converts paper documents, ranging from card size items to engineering drawings and microfilm/microfiche into electronic images and applies metadata.

Using high-speed production scanners and OpenText technology, backfile and day forward conversions are performed in a secure, high-tech facility.

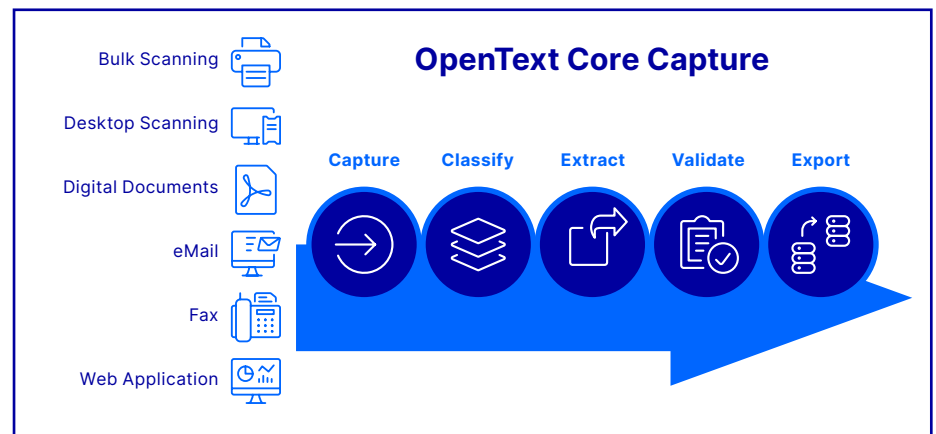
## Unify and scale information capture across departments and locations

Organizations expect the volume of enterprise content to grow by 4.5 times over the next two years, with almost 60 percent of that information being unstructured.<sup>2</sup> Relying on manual processes to capture and extract information needed by key business processes and cross-departmental workflows will not be sustainable. Core Capture automatically extracts information that arrives as paper, emails, PDFs, and images, helping organizations to scale capture and shared services to support organization-wide content.

OpenText solutions can use traditional document identification techniques, such as barcodes, as well as the latest in machine-learning recognition technology for automated classification, data extraction, and OCR. Automatically classifying a wide variety of document types and applications is handled through a broad set of classification technologies, including newer statistic-based and natural language processing (NLP) technologies. By employing multiple cascading recognition technologies, Core Capture ensures highly accurate results.

## Simplify compliance and document access through automatic classification

Organizations face increasing pressure to protect information and comply with evolving regulations. With Core Capture, organizations can strengthen compliance and information governance by automatically classifying and filing documents based on metadata extracted from semi-structured and unstructured content.



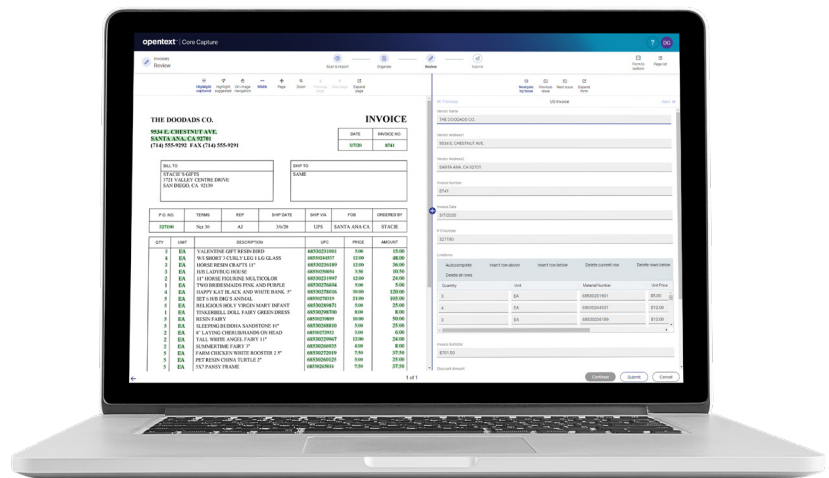
Core Capture supports a range of inbound document types and delivers content to IM, CRM, ERP, and other systems. Batches can be completed in real time by a business user or routed automatically using workflows to take advantage of background processing.

<sup>1</sup> APQC, KM Makes Knowledge Workers More Productive and Less Stressed Out. (2022)

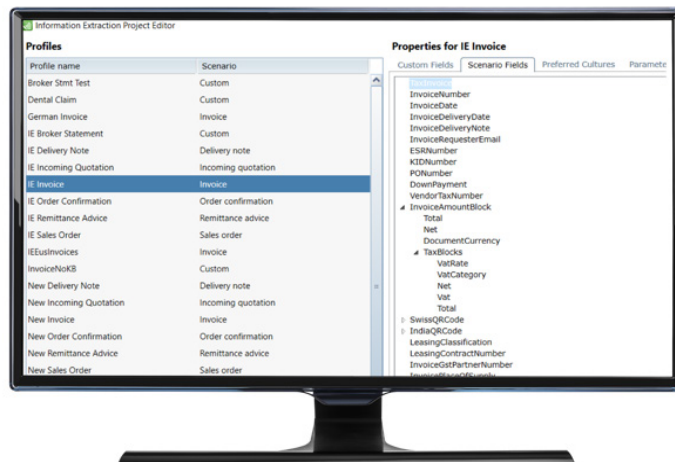
<sup>2</sup> AIIM, AIIM 2021 State of the Intelligent Information Management Industry. (2021)

Core Capture offers SaaS-based automated information capture with a simple web UI and built-in continuous machine learning that doesn't require template creation or maintenance. Based on the same technology as OpenText™ Intelligent Capture, which is used by thousands of organizations globally, Core Capture leverages a combination of different recognition technologies to maximize extraction accuracy for semi-structured and unstructured documents.

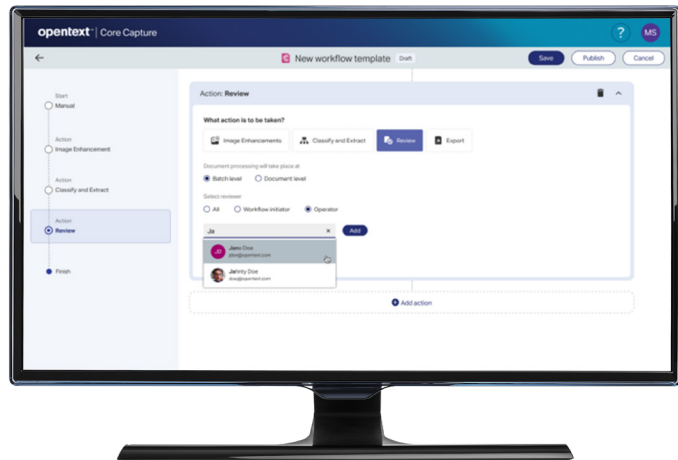
Each day, organizations in the Insurance, Financial Services, Public Sector and Healthcare industries process millions of forms and documents using OpenText Capture solutions to enable their intelligent document processing. OpenText is committed to future-proofing its content services platforms and integrating capture to provide an end-to-end solution from one vendor.



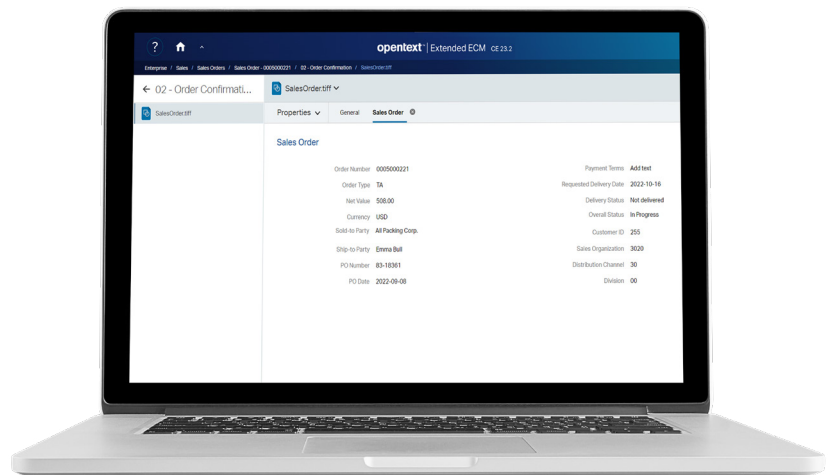
Access a simple human-in-the-loop web UI to review and validate extracted data for each document.



Easy to configure with no pre-training or templates required, the Information Extraction Engine learns continuously in production, even as documents and layouts evolve over time.



Using a web-based no-code modeler, non-technical users can set up custom workflows tailored to meet business requirements without scripting or coding.



Core Capture can export metadata-enriched documents into leading content repositories, such as OpenText™ Extended ECM

## Features

<b>SaaS deployment</b>	Manages capture operations with a scalable platform hosted by OpenText, with data residency options in North America and Europe.
<b>Web-based client</b>	Offers a single user interface for both administrative and capture processes.
<b>Intelligent document classification</b>	Automatically identifies documents with multiple classification technologies that combine text and graphical methods to deliver higher accuracy.
<b>Intelligent data extraction and validation</b>	Reduces manual data entry and ensures accuracy across 85 languages and locales with built-in OCR, machine learning and third-party recognition engine integrations.
<b>Continuous machine learning</b>	Automatically updates machine learning models using data from human-in-the-loop validation activities by non-technical reviewers—no template building, data labeling or model development expertise is needed.
<b>Integrated AI and machine learning</b>	Improves accuracy and process automation with AI and machine learning capabilities that automatically recognize new documents and quickly process business content.
<b>Configurable capture workflows</b>	Configures basic workflows in a no-code modeler to allow background processing, multi-user input, or fully bypassing the user interface for content that does not need validation.
<b>Multiple recognition technologies</b>	Identifies document types and analyzes text to understand context and employ efficient processes with a multi-engine approach.
<b>Single-click entry</b>	Auto-populates metadata fields with selected text, taking advantage of preset rules to make sure the right data is extracted.
<b>Data type highlighting</b>	Highlights possible choices for a field to make operator selection of the correct data easier and faster.
<b>Export options</b>	Seamlessly integrates with multiple applications, including OpenText™ Core Share, OpenText™ Core Content, OpenText™ Extended ECM, OpenText™ Documentum™, OpenText™ Intelligent Capture and OpenText™ AppEnhancer. Plus, with leading line-of-business solutions using CMIS.
<b>Designer</b>	Provides a tool to choose documents to process, define which fields to extract and configure table look-ups and validation rules.

[Learn more](#)

[OpenText Core Capture product web page](#)

[What's new in OpenText Core Capture](#)

## About OpenText

OpenText, The Information Company, enables organizations to gain insight through market leading information management solutions, on premises or in the cloud. For more information about OpenText (NASDAQ: OTEX, TSX: OTEX) visit: [opentext.com](https://opentext.com).

## Connect with us:

- [OpenText CEO Mark Barrenechea's blog](#)
- [X \(formerly Twitter\)](#) | [LinkedIn](#)