



www.performancefooting.com

## Simple to Install - Easy DIY

Easily place the bags on your arena, rake out and drag with any drag or harrow



1. Unpack the bags from the shipping pallets and place evenly across your arena. Space them approximately 10-12 feet apart from each other.



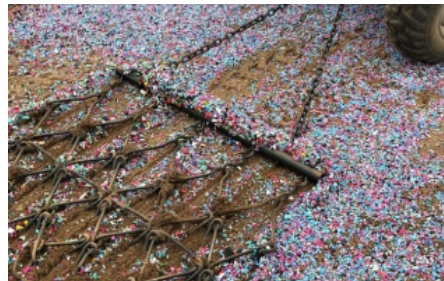
2. With a box cutter or blade, cut the top of each bag in an X shape.



3. Turn over each bag so that the FoamFooting™ empties into the arena.



4. Using a rake, spread each pile of foam until it covers the entire arena or desired space. FoamFooting™ mixes in with your base sand material. Don't worry about the explosion of colors. They will fade. Though, please take some photos and share them with us!



5. Using your normal drag, thoroughly drag the arena or space until the FoamFooting™ is mixed-in with your base material. Normal riding and usage will fully mix the FoamFooting™ into your base.

**Ride, enjoy and share your photos and reviews with us on Facebook or Instagram!**



### WARNING

Sand, rock and dirt are common footing materials and are not meant for human or animal consumption. This product is a footing additive and also not meant for human or animal consumption. While this material can improve rebound, it is not intended as a safety device or designed to reduce or prevent injuries that may occur. Riding horses is dangerous. Stay safe and always wear a helmet.

📍 7845 E. Gelding Dr. Suite 103 Scottsdale AZ 85260 📞 877-835-0878

This information is provided for reference only and is not intended as a warranty or guarantee.