



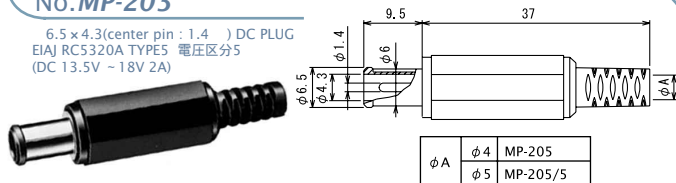
DC PLUGS & JACKS

EIAJ RC5320A TYPE5 电压区分5 適合品

RATING 定格: DC18V 2A

No.MP-205

6.5 x 4.3(center pin : 1.4) DC PLUG
EIAJ RC5320A TYPE5 电压区分5
(DC 13.5V ~ 18V 2A)



No.MC-5325

DC ADAPTOR CABLE L=1800mm
6.5 x 4.3(center pin : 1.4) DC PLUG
EIAJ RC5320A TYPE5 电压区分5
(DC 13.5V ~ 18V 2A)



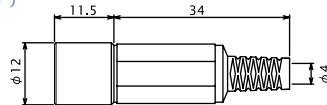
No.MC-5325L

RIGHT ANGLE DC ADAPTOR CABLE L=1800mm
6.5 x 4.3(center pin : 1.4) DC PLUG
EIAJ RC5320A TYPE5 电压区分5
(DC 13.5V ~ 18V 2A)



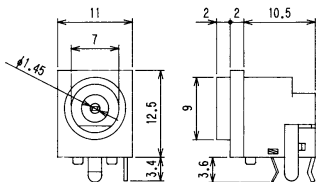
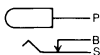
No.MJ-085N

DC INLINE JACK
PLUG TYPE: 6.5 x 4.3 (Center pin: 1.4)
EIAJ RC5320A TYPE5 电压区分5
(DC13.5V ~ 18V 2A)



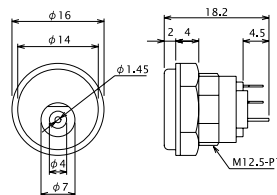
No.M05-532A0

DC JACK FOR P.C.B.
PLUG TYPE: 6.5 x 4.3(center pin : 1.4)
EIAJ RC5320A TYPE5 电压区分5
(DC 13.5V ~ 18V 2A)



No.MJ-20

PANEL MOUNT DC JACK
PLUG TYPE: 6.5 x 4.3(center pin : 1.4)
EIAJ RC5320A TYPE5 电压区分5
(DC 13.5V ~ 18V 2A)



Marushin electric mfg. co., ltd