



DESIGNING
LABORATORIES
WITH YOU
IN MIND.

PSA LABORATORY FURNITURE LLC
FURNITURE | CERTIFICATION | FUME HOODS

Our testing and certification experts are trained and equipped to ensure your lab facility maintains regulatory compliance and meets current rigorous safety standards for your employees. PSA offers testing and certification services for your laboratory containment devices, including:

- Fume Hoods
- Biological Safety Cabinets
- Laminar Flow Devices
- Clean Rooms

Additional Testing

For other tests or certifications, PSA can consult with you about your applications and develop custom testing methods you need. Safety is a top priority for your lab! Contact PSA to ensure your laboratory equipment meets the standards required for personnel safety and up to date compliance.

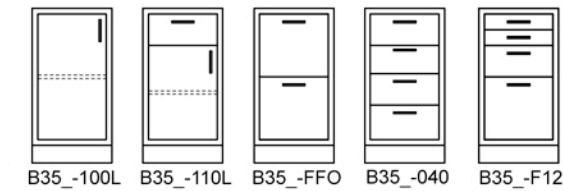
- DESIGN
- CONSULTATION
- SALES
- INSTALLATION
- TESTING AND CERTIFICATION
- PSA = SERVICE!**

2100 S. Calhoun Rd.
New Berlin, WI 53151
www.psalaboratoryfurniture.com
Phone: 262-204-7660
Fax: 262-661-7060
info@psalf.com

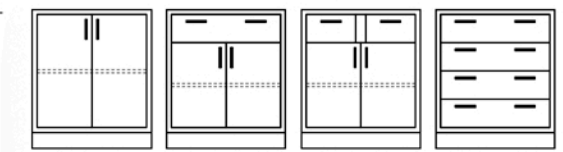
CABINETS



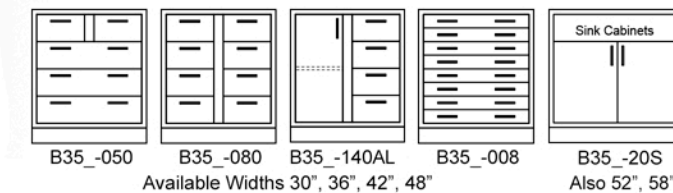
STANDING HEIGHT



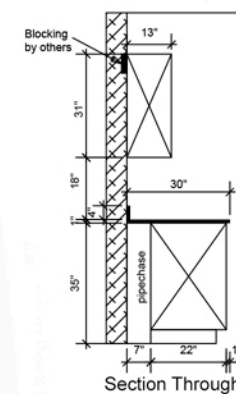
B35_-100L B35_-110L B35_-FFO B35_-040 B35_-F12
Available Widths 15", 18", 24"



B35_-200 B35_-210 B35_-220 B35_-040
Available Widths 30", 36", 42", 48"



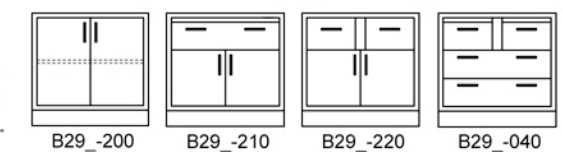
B35_-050 B35_-080 B35_-140AL B35_-008 B35_-20S
Available Widths 30", 36", 42", 48" Also 52", 58"



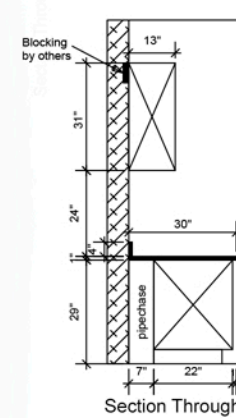
SITTING HEIGHT



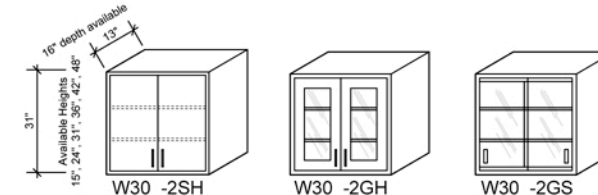
B29_-100R B29_-110L B29_-F02 B29_-030
Available Widths 15", 18", 24"



B29_-200 B29_-210 B29_-220 B29_-040
Available Widths 30", 36", 42", 48"



WALL

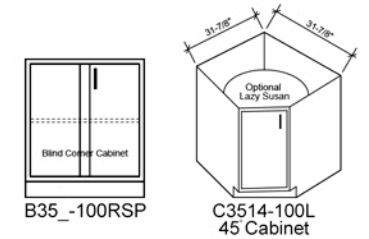


W30_-2SH Solid Hinged W30_-2GH Glass Hinged W30_-2GS Glass Sliding
Available Widths 18", 24", 30", 36", 42", 48"

Available Widths 15", 18", 24", 30", 36", 42", 48"

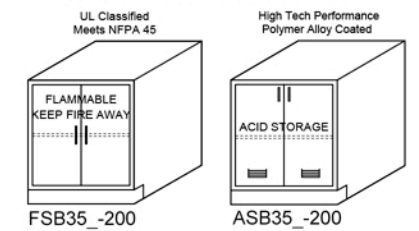
Cabinets are available in modular steel, high quality wood, stainless steel and plastic laminate.

CORNER



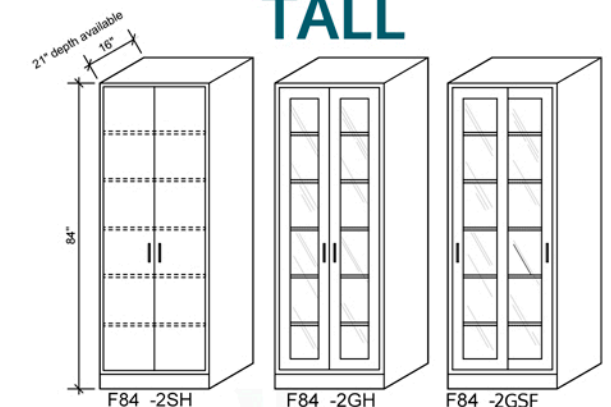
B35_-100RSP C3514-100L 45 Cabinet

CHEMICAL



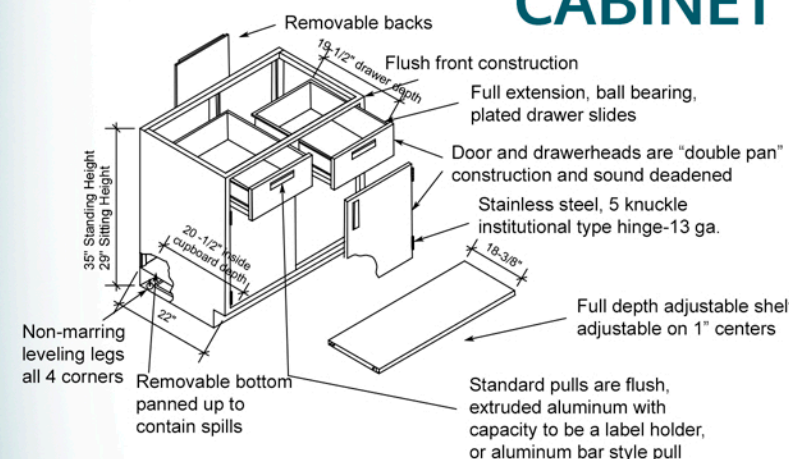
FSB35_-200 ASB35_-200

TALL



F84_-2SH F84_-2GH F84_-2GSF
Available Widths 18", 24", 30", 36", 42", 48"
(Note: 18" & 24" have one door)

CABINET DETAILS



All surfaces shall be painted or zinc plated. The paint is chemical resistant baked-on epoxy powder. Specific test data is available upon request.

Gauges of cabinet components are as follows:

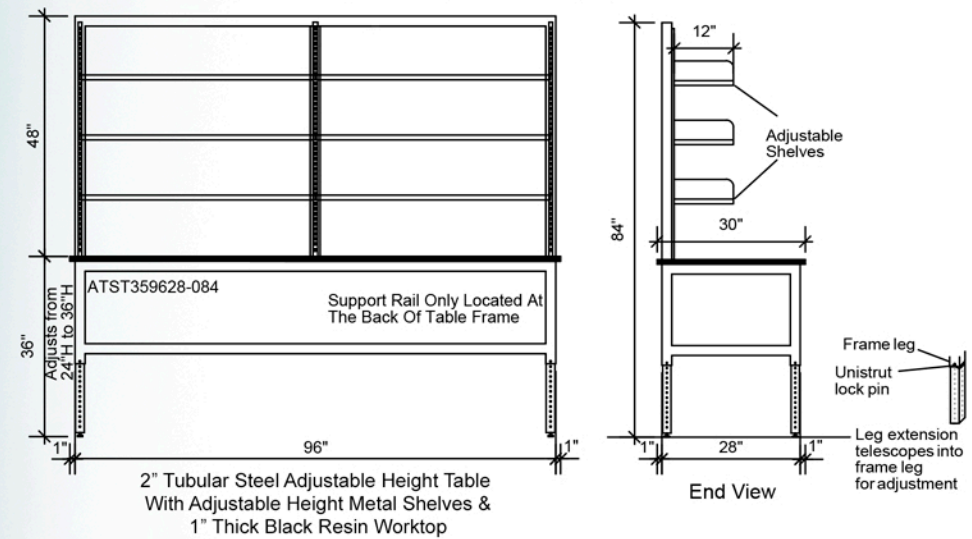
Aprons	18 ga.	Legs	18 ga.
Back Panels	20 ga.	Shelves	18 ga.
Bottom Panels	18 ga.	Side Panels	18 ga.
Drawer/Door Outer Panel	20 ga.	Table Frames	18 ga.
Door Inner Panel	20 ga.	K & V Shelf Clip	
Drawer Bodies	20 ga.		

For complete specifications, request our full line of product specifications. Subject to change.

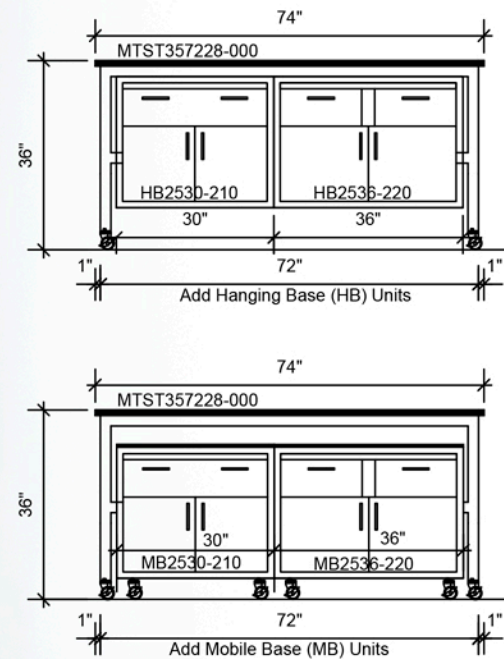
TABLES

MOBILE LABORATORY TABLES

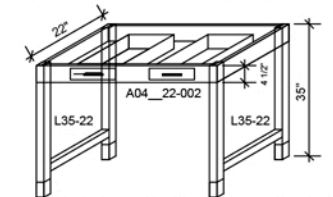
Tubular Steel Tables - 16 ga. fully welded tables available in fixed or adjustable height with leveling legs or casters



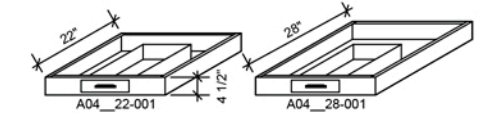
Tables are available in welded tubular steel, modular steel, stainless steel, and wood.



LEGS/APRONS



Combine aprons and legs to make the table of your size
UT354822-002 = 35"h x 48" w x 22"d with 2 x drawers



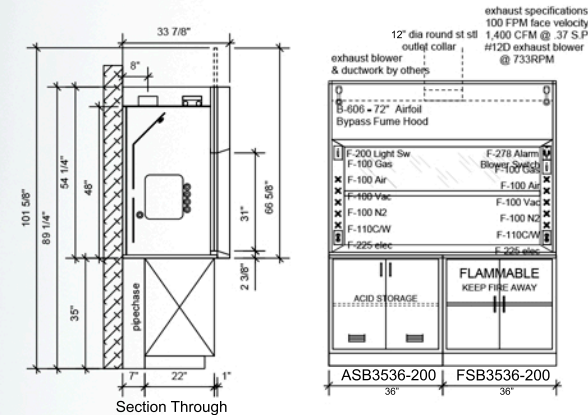
Available Widths 24", 30", 36", 42", 48", 54", 60", 66", 72"

COUNTERTOP SELECTION AND COMPARISON

	Chemical Resistance	Abrasion Resistance	Heat Resistance	Impact Resistance	Moisture Resistance	Bacterial Resistance	Areas of Use	Cost
Epoxy Resin	Excellent	Good	Excellent	Good	Excellent	Excellent	All	Medium
Phenolic Resin	Excellent	Good	Good	Good	Excellent	Excellent	All	Medium
Stainless Steel	Good	Good	Good	Excellent	Excellent	Excellent	Select	High
Edge Grain Maple	Fair	Fair	Fair	Good	Fair	Poor	Select	Medium
High Pressure Laminate	Fair	Good	Fair	Good	Fair	Fair	Select	Low

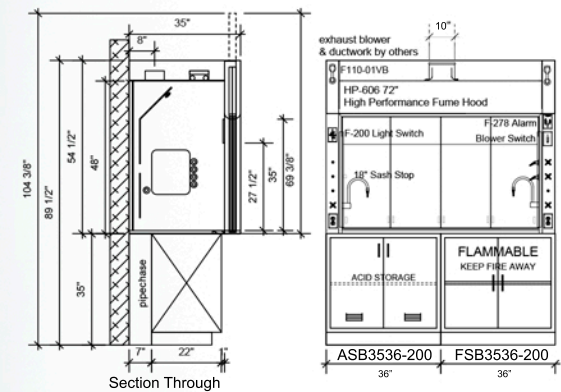


FUME HOODS



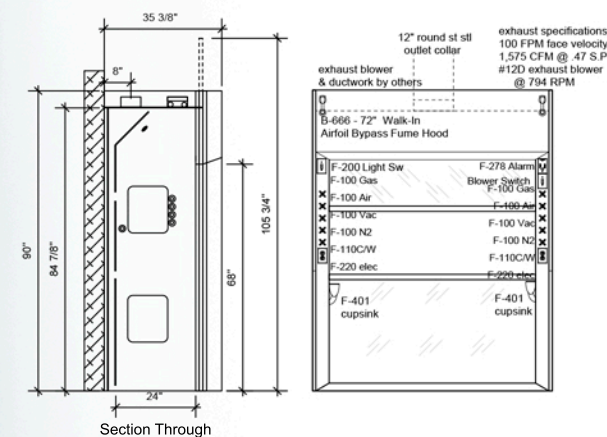
Mechanical Specifications

Model	Hood Width	Exhaust Collar	CFM	S.P.	Sash Opening
B-604	48"	9" Round	867	.39"	31" x 38"
B-605	60"	10" Round	1,133	.38"	31" x 50"
B-606	72"	12" Round	1,400	.37"	31" x 62"
B-607	84"	2 x 9" Round	1,667	.37"	31" x 74"
B-608	96"	2 x 9" Round	1,933	.45"	31" x 86"



Mechanical Specifications

Model	Hood Width	Exhaust Collar	CFM	S.P.	Sash Opening
HP-604	48"	8" Round	380	.13"	27-1/2" x 38"
HP-605	60"	8" Round	500	.19"	27-1/2" x 50"
HP-606	72"	10" Round	620	.14"	27-1/2" x 62"
HP-607	84"	2 x 8" Round	740	.12"	27-1/2" x 74"
HP-608	96"	2 x 8" Round	860	.15"	27-1/2" x 86"



Mechanical Specifications

Model	Hood Width	Exhaust Collar	CFM	S.P.	Sash Opening
B-9660	72"	12" Round	1,575	.47"	31" x 62"
B-9680	96"	2 x 9" Round	2,175	.57"	31" x 86"

AIRFOIL BYPASS HOODS

Airfoil Bypass Hoods have the following Standard Items:

1. White Resin-Chem lining.
2. 16 ga. internal structural frame.
3. Non-corrosive nylon fasteners - no metal inside the hood.
4. Full view 4-sided PVC vertical sash with full width pull and 7/32" laminated safety glass panel.
5. Optional manual sash lock at 18" operational height.
6. Lower airfoil with black epoxy finish.
7. Vapor proof T-8 fluorescent light fixture, with bulbs.
8. Round stainless steel duct collar.
9. Pre-punched fixture holes in post and inner side liner.
10. Gasketed access panel.
11. Black PVC sash guides.
12. Pre-wired electric fixtures to J-box on top of hood.
13. Pre-plumb service fixtures up or down - verify.
14. UL-1805 Classified.

HIGH PERFORMANCE HOODS

Consumes 50% less energy than conventional hoods

HP Hoods have the following Standard Items:

1. White Resin-Chem lining.
2. 16 ga. internal structural frame.
3. Non-corrosive nylon fasteners - no metal inside the hood.
4. Full view combination horizontal / vertical sash with top hung 7/32" laminated safety glass panels.
5. Keyed sash lock at 18" operational height.
6. Combination airfoil / flush sill containment trough with white plas-cote finish.
7. Vapor proof T-8 fluorescent light fixture, with bulbs.
8. Round stainless steel duct collar.
9. Pre-punched fixture holes in post and inner side liner.
10. Gasketed access panel.
11. Black PVC sash guides.
12. Pre-wired electric fixtures to J-box on top of hood.
13. Pre-plumb service fixtures up or down - verify.
14. UL-1805 Classified.

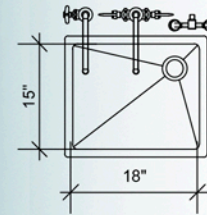
WALK-IN AIRFOIL BYPASS HOODS

Walk-In Airfoil Bypass Hoods have the following Standard Items:

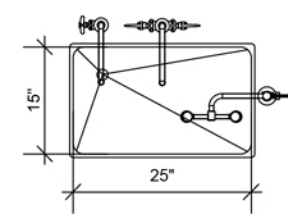
1. White Resin-Chem lining.
2. 16 ga. internal structural frame.
3. Non-corrosive nylon fasteners - no metal inside the hood.
4. Full view 4-sided PVC vertical sash with full width pull and 7/32" laminated safety glass panel.
5. Optional manual sash lock at 18" operational height.
6. Lower airfoil with black epoxy finish.
7. Vapor proof T-8 fluorescent light fixture, with bulbs.
8. Round stainless steel duct collar.
9. Pre-punched fixture holes in post and inner side liner.
10. Gasketed access panel.
11. Black PVC sash guides.
12. Pre-wired electric fixtures to J-box on top of hood.
13. Pre-plumb service fixtures up or down - verify.
14. UL-1805 Classified.

ACCESSORIES

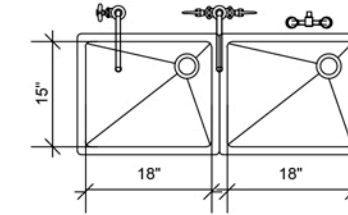
EPOXY RESIN SINKS



PL-30 Lipped
18" x 15" x 11"
PSO-3 outlet

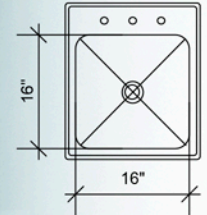


PL-55 Lipped
25" x 15" x 10"
PSO-3 outlet

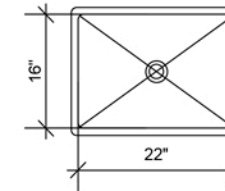


2 x PL-30 Lipped
18" x 15" x 11" / each
2 x PSO-3 outlets

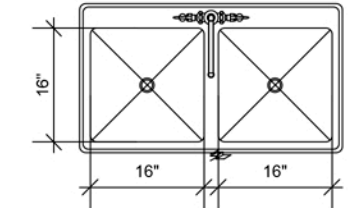
STAINLESS STEEL SINKS



SL-2219-A-GR
Ledge Type
16" x 16" x 7-1/2"
J-35 outlet



SX-1925-A
No-Ledge
16" x 22" x 10-1/2"
J-35 outlet

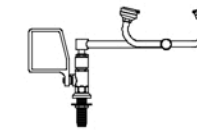


DL-2137-A-GR Double Bowl
Ledge Type
16" x 16" x 7-1/2" / each
2 x J-35 outlets

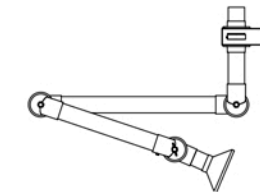
SAFETY EQUIPMENT



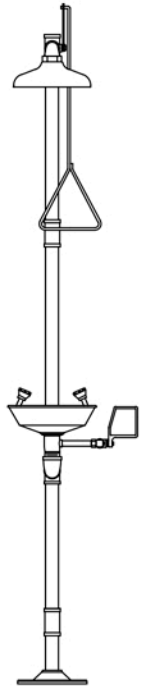
EW-1022
Deck Mtd.
Eyewash/Drench Hose



EW-806
Deck Mtd.
Swivel Eyewash



SH-75
Point of Use
Snorkel Hood



SS-902 Safety Station
Shower/Eyewash

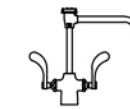
SINK FIXTURES



L-611
Cold Water



L-7611
DI Pure Water



L-412-VB-BH-08
H/C Water



L-512-WS
Panel Mtd.
H/C Water



L-2212-VB
H/C Water

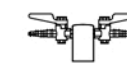


L-3001
Foot Control
L-084-WSA
H/C Water

ELECTRIC/GAS FIXTURES



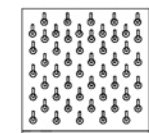
E-533
Double Gang
Single Sided



L-4200-1325
Double 180°



L-4200-131
Single



Available in Various Sizes & Materials
(stainless steel, resin, acrylic)

A large variety of
sinks, fixtures, and
safety items are
available.



LABORATORY FURNITURE LLC

FURNITURE | CERTIFICATION | FUME HOODS

DESIGNING LABORATORIES WITH YOU IN MIND AT HOME AND AROUND THE WORLD!

The tables and cabinetry met / exceeded our expectations in regards to quality and overall "fit" in the lab, and the setup process went very smoothly overall. We will definitely keep your team in mind for future projects.

- Aldevron

Thank you again for the wonderful work that was done. You guys have a great team and I will be happy to recommend you to anyone looking for a great furnishing company!

- Ayass Lung Clinic

We are very pleased with the custom new cabinets and benches in our MSI production area. Everything was engineered to fit perfectly. PSA did an excellent job and it was a pleasure to work with PSA on the installation. The quality of construction is exactly what I was expecting and hoping for. I am really impressed with the black phenolic resin tops, this material is the real deal when it comes to classic lab benchtops.

- Saint-Gobain

Agricultural

- Pan American Seeds, Elburn, IL
- ABS Global, De Forest, WI
- Arkansas Mill Supply, White Hall, AR
- Aldevron, Fargo, ND
- Phibro Animal Health, Quincy, IL
- Monsanto, Ankeny, IA

Research & Bio-Tech

- Novozymes BioAg Inc., Milwaukee, WI
- Synata Bio, Warrenville, IL
- Virent, Madison, WI
- Kurion Research Center, Richland, WA
- Thermo Fisher Scientific

Pharmaceutical

- Standard Process Laboratories, Palmyra, WI
- Carma Labs, Franklin, WI
- Agnitio (Somnium Life Sciences), Appleton, WI
- Deerland Enzymes, Inc., Kennesaw, GA
- STI Pharma LLC, Newtown, PA
- Baxter HealthCare, Round Lake, IL
- Catalent Pharmaceuticals, Madison, WI

Food & Beverage

- California Dairies, Visalia, CA
- Tate & Lyle, US Nationwide
- Archer Daniels Midland Company, US Nationwide
- Robert Mondovi Winery, Napa, CA
- PepsiCo, City of Industry, CA
- Tropicana Foods, FL
- Ajinomoto Heartland, Eddyville, IA
- Sweeteners Supply, Brookfield, IL
- Golden Peanut, Dawson, GA
- PureCircle USA Inc., Oak Brook, IL
- Miller Coors / Crispin Cider, Colfax, CA
- Denali Ingredients, New Berlin, WI
- Griffith Labs, Chicago, IL
- Rich Products, Niles, IL
- Stratas Foods, Dallas, TX
- Clos du Bois, Geyserville, CA
- Cargill Foods, US Nationwide
- Quaker Oats Company

Educational

- Highland Community College, Freeport, IL
- Northwest College, Powell, WY
- Kansas State University, Manhattan, KS
- University of Missouri, Columbia, MO
- Southern Illinois University, Carbondale, IL
- Wayne County Community College District, Belleville, MI
- Claremont Colleges, Claremont, CA
- Andrews University, Berrien Springs, MI
- University of St. Francis, Joliet, IL
- Leman Manhattan Prep School, New York, NY
- Marquette University, Milwaukee, WI

Medical / Health Care

- Los Alamos Medical Center, Los Alamos, NM
- Stryker, Fremont, CA
- Triclinic Labs, Lafayette, IN
- North Western Memorial Hospital, Chicago, IL
- North Star Medical Radioisotopes, Beloit, WI
- Loreto Hospital, Chicago, IL
- Ayass Lung Clinic & Sleep Center, Frisco, TX
- Xenex Disinfection Services, San Antonio, TX
- Fresenius Kabi, Lake Zurich, IL
- Sage Products Inc., Cary, IL
- Wheaton Franciscan Medical Center, Franklin, WI
- Baxter Health Care, Los Angeles, CA
- Care Fusion, Vernon Hills, IL
- Mount Sinai School of Medicine, New York, NY

Industrial / Manufacturing

- Ingersoll Rand (Trane Company), La Crosse, WI
- Aerojet/Rocketdyne, Jonesborough, TN
- IP Corp, St. Paul, MN
- Lanco Pennland, Hancock, MD
- Michelin, US Nationwide
- Advanced Atomization Technologies, Clyde, NY
- Enviroplas, Evansville, IN
- Xerox, Webster, NY
- Schneller, Kent, OH
- ARC Products, Inc., Dallas, TX
- Guardian Industries, Carleton, MI
- KIK Products, Danville, IL
- Bausch & Lomb, Clearwater, FL
- Omni Logistics, Coppell, TX
- Parkersburg Tile Co., Parkersburg, WV
- Oberlin Filters, Waukesha, WI
- Saint-Gobain, San Diego, CA
- CertainTeed, Norwood, MA
- The Honest Company, Playa Vista, CA
- Whitehouse Laboratories, Whitehouse, NJ
- Domtar Manufacturing, Bennettsville, SC
- Federal-Mogul, Waupun, WI
- Buckeye Florida Paper, Perry, FL
- Miomatrix, Glencoe, MN

Chemical & Plastics

- Oil-Dri America, Ochlocknee, GA
- Chemtool, Division of Lubrizol, Rockton, IL
- Mississippi Silicone, Burnsville, MS
- Valspar, Wheeling, IL
- Vantage Specialty Chemical, Gurnee, IL
- Akzo Nobel, Reading, PA
- AOC Resins, Collierville, TN
- Enviroplas, Evansville, IN
- Oakland Chemical, Rochester, MN
- Petroleum Accessories, Houston, TX
- Brenntag Great Lakes, LLC, Menomonee Falls, WI
- Sigma Aldrich, Sheboygan Falls, WI
- 3M, Cordova, IL
- Rust-Oleum Corp. - Pleasant Prairie, WI

OUR CUSTOMERS -
NATION AND WORLD
WIDE!

Aggregate & Mining

- Krete Industries, Brookfield, WI
- Titan America, Medley, FL
- Morton Salt, Elgin, IL & Port Canaveral, FL
- Mohawk Asphalt, Skotia, NY
- Boral, San Antonio, TX

Metallurgical

- Fisher Barton, Watertown, WI
- Lap Master International, LLC, Mount Prospect, IL
- Woodward, Rockford, IL
- Ingersoll Rand (Trane Company), La Crosse, WI
- Hainbuch America, Germantown, WI
- Heraeus Precious Metals, W. Conshohocken, PA

Water & Waste Water

- Rock-Tenn, Delaware Water Gap, PA
- Veolia Water, Yukon, OK
- Fisher Scientific / IL State Water Survey, Urbana, IL
- North Liberty WTP, North Liberty, IN
- Colorado Springs WTP, Colorado Springs, CO
- Muscatine Water Pollution Control Plant, Muscatine, IA
- Village of Tonica, Tonica, IL

International

- Gulf Keystone Petroleum, Kurdistan, Iraq
- Hyundai Engineering & Construction, Saudi Arabia
- Tatweer Mud Lab, Manama City, Bahrain
- Diageo, Panama City, Panama
- Diageo, St Croix, British V.I.
- Western Arctic Research Center, Inuvik, Canada
- Exxon Mobile, Papua New Guinea
- Entomology Lab, Iquitos, Peru