

calendar2025



BEAUTIFUL CAT

sent by Aaira Gujrati, Class 3, Ram Niwas Bajaj English High School, Mumbai

JANUARY

SUN	MON	TUE	WED	THU	FRI	SAT
			1	2	3	4
5	6	7	8	9	10	11
12	13	14	15	16	17	18
19	20	21	22	23	24	25
26	27	28	29	30	31	



COUNTRY MAN

sent by Batul Mufaddal Vohra, Class 7, Our Own English High School Girls, Sharjah, UAE

FEBRUARY

SUN	MON	TUE	WED	THU	FRI	SAT
						1
2	3	4	5	6	7	8
9	10	11	12	13	14	15
16	17	18	19	20	21	22
23	24	25	26	27	28	

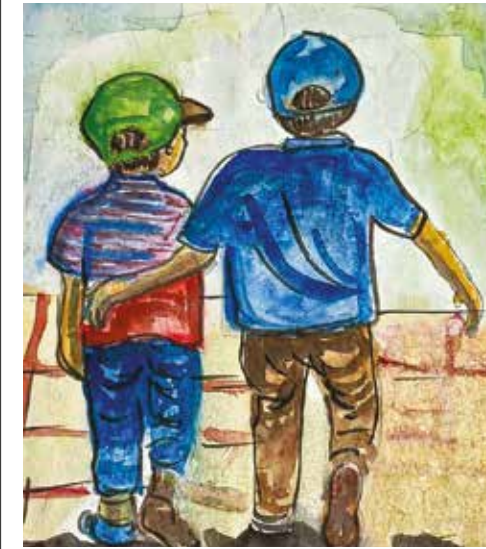


ORCHIDS

sent by Ashwika Ramasarma, Class 2, Mitra Academy, Arakere Gate, Bengaluru

MARCH

SUN	MON	TUE	WED	THU	FRI	SAT
30	31					1
2	3	4	5	6	7	8
9	10	11	12	13	14	15
16	17	18	19	20	21	22
23	24	25	26	27	28	29

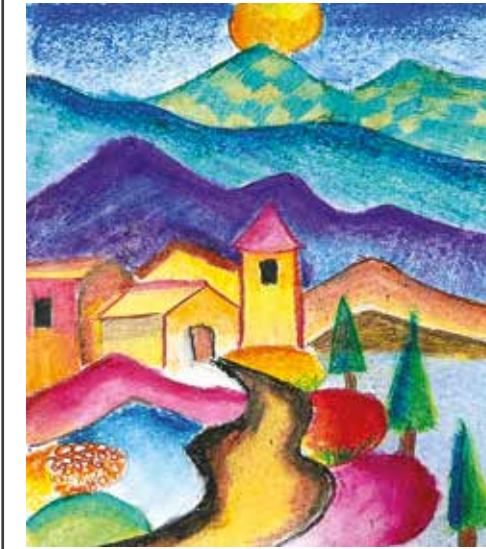


BONDING OF BROTHERS

sent by AC Sania, Class 6, Presidency School, Bengaluru

APRIL

SUN	MON	TUE	WED	THU	FRI	SAT
		1	2	3	4	5
6	7	8	9	10	11	12
13	14	15	16	17	18	19
20	21	22	23	24	25	26
27	28	29	30			



PLAYING WITH COLOURS

sent by Vihaan Jain, Class 5, Suncity School, Gurugram

MAY

SUN	MON	TUE	WED	THU	FRI	SAT
				1	2	3
4	5	6	7	8	9	10
11	12	13	14	15	16	17
18	19	20	21	22	23	24
25	26	27	28	29	30	31



RAINBOW SWIRLY TREE

sent by Saisha Prashant, Class 5, Kothari International School, Noida

JUNE

SUN	MON	TUE	WED	THU	FRI	SAT
1	2	3	4	5	6	7
8	9	10	11	12	13	14
15	16	17	18	19	20	21
22	23	24	25	26	27	28
29	30					



FINGER PAINTING

sent by Vrishank Iyer, Playgroup, Little Millennium, Bengaluru

JULY

SUN	MON	TUE	WED	THU	FRI	SAT
		1	2	3	4	5
6	7	8	9	10	11	12
13	14	15	16	17	18	19
20	21	22	23	24	25	26
27	28	29	30	31		



HAR GHAR TIRANGA

sent by Aditya Das, Class 4, BV Rabindranath Tagore School of Excellence, Pune

AUGUST

SUN	MON	TUE	WED	THU	FRI	SAT
31					1	2
3	4	5	6	7	8	9
10	11	12	13	14	15	16
17	18	19	20	21	22	23
24	25	26	27	28	29	30



MADHUBANI PAINTING

sent by Nupur, Class 4, American Eduglobal School, Ghaziabad

SEPTEMBER

SUN	MON	TUE	WED	THU	FRI	SAT
	1	2	3	4	5	6
7	8	9	10	11	12	13
14	15	16	17	18	19	20
21	22	23	24	25	26	27
28	29	30				

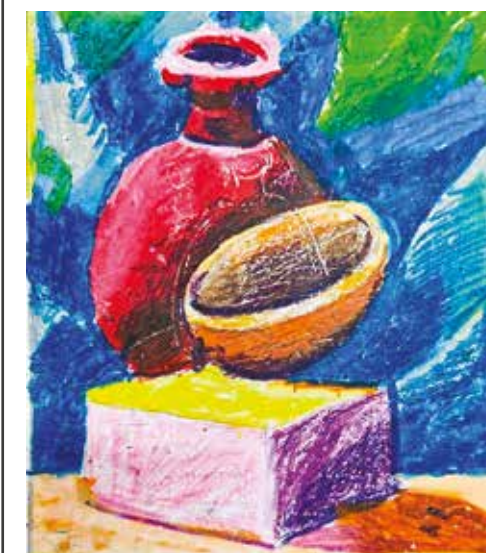


ANIMAL PLANET

sent by Dnyanada Sasane, Class 5, The Bishop's School, Pune

OCTOBER

SUN	MON	TUE	WED	THU	FRI	SAT
			1	2	3	4
5	6	7	8	9	10	11
12	13	14	15	16	17	18
19	20	21	22	23	24	25
26	27	28	29	30	31	



MYSTIC POTTERY

sent by Ditvi Chirag, Class 3, Cambridge School, Mangaluru

NOVEMBER

SUN	MON	TUE	WED	THU	FRI	SAT
30						1
2	3	4	5	6	7	8
9	10	11	12	13	14	15
16	17	18	19	20	21	22
23	24	25	26	27	28	29



MY HEALTH BASKET

sent by Jency Dholia, Class 2, CNMS School, Mumbai

DECEMBER

SUN	MON	TUE	WED	THU	FRI	SAT
	1	2	3	4	5	6
7	8	9	10	11	12	13
14	15	16	17	18	19	20
21	22	23	24	25	26	27
28	29	30	31			