

Supplementary materials

Real-time regulation of catalysis by remote controlled enzyme-conjugated gold nanorods composites and application in aldol reaction

Wei Li[§], Dongni Liu[§], Zhengqiang Li* and Renjun Gao*

Key Laboratory for Molecular Enzymology and Engineering of Ministry of Education, School of Life Science, Jilin University, Changchun, 130012, China. E-mail: lzq@jlu.edu.cn(ZL) and gaorj@jlu.edu.cn(RG)

[§]These authors contributed equally to this work.

* Correspondence author: Renjun Gao (RG) and Zhengqiang Li (ZL)

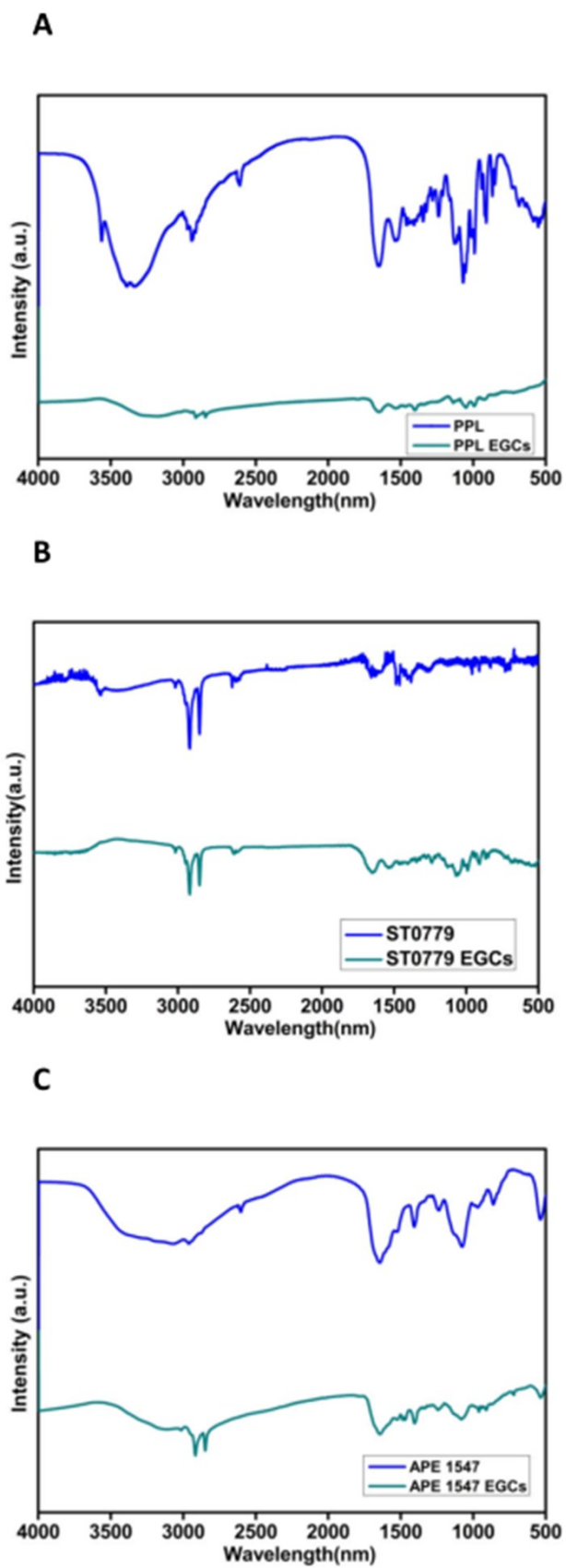


Figure S1. FTIR spectra of PPL (A), ST0779 (B), APE1547 (C) and respective EGCs.

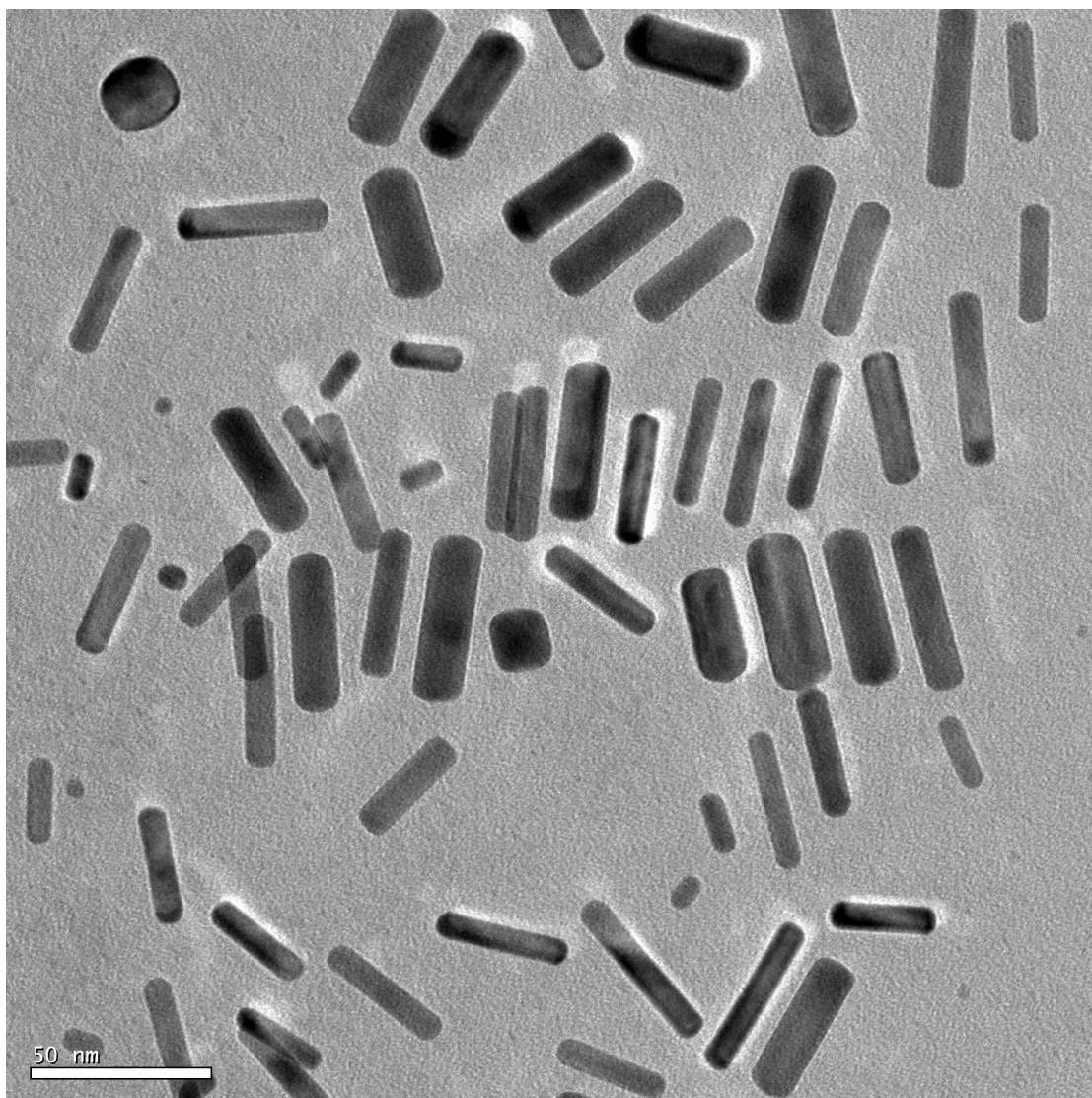


Figure S2. TEM image of as synthesized EGCs.

Entry	Enzyme	Catalytic Condition	Time(h)	Yield(%)
1	PPL	37°C water bath	24	96.4
2	ST0779	55°C water bath	4	97.5
3	APE1547	55°C water bath	4	94.9
4	PPL EGCs	NIR	0.5	95.4
5	ST EGCs	NIR	0.5	98.8
6	APE EGCs	NIR	0.5	99.3

7	Control/No enzyme	37°C water bath	24	<0.5
8	Control/No enzyme	55°C water bath	4	<0.5

Table S1. Comparison of wild type and its enzyme-GNRs complexes in aldol addition.