



Range of  
**Plastics**





GADOYA  
HOLDINGS

Gadoya Holdings began its journey in 1997 as a humble ten-person company led by the visionary Satish Gadoya. He spearheaded the company for over three decades and turned it into a highly successful enterprise.

The Gadoya Holdings group is comprised of 10 businesses with a combined workforce of over 900 employees. The company is built on the strong legacy of its network, and strives consistently to exceed the customers' expectations.

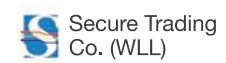


# Our group of companies

## ENGINEERING



## INDUSTRIES



## ELECTRICALS



## MEDICAL



## FITNESS



## TOURISM







Chairman Speak

Gadoya Holdings began its journey in 1997 under the able leadership of the visionary Satish Gadoya.

The company expanded its business to a new wing, Sabin Plastic Industries LLC, which is the brain child of the Chairman Mr. Satish Gadoya. At Sabin, we've successfully introduced plastic products to various industries such as construction, aluminium, glass, kitchen cabinets, packaging, cap and closures, food and beverages, electrical fittings, furniture fittings, sports, printing and many more engineering applications

“Over the past few years, Sabin has taken giant strides on its path to glory and is well ahead on its mission to be a one-stop-shop for all high-end engineering requirements. At Sabin, we understand the expectations one has from high-end precision component manufacturers. We strongly emphasise on timely deliveries, process improvement, economic pricing of products, and training and recruitment of personnel as per the current market.”.

Welcome aboard.

Mr. Satish Gadoya  
Chairman







**SABIN**  
PLASTIC





# Our Promise

## **QUALITY**

Sabin Plastic Industries LLC believes in the excellent selection of 4Ms (men, machine, method and material) to ensure the desired level of quality. This is achieved by employing highly skilled professionals, state-of-the-art machinery such as conventional tool room machinery, international standard CNC, injection moulding machines of different tonnage/capacity, essential ancillary equipments and machines to support the moulding unit and by using virgin grade plastic raw materials for our production.

Sabin Plastics is an ISO 9001:2008 certified company. ISO 9000 is a family of standards for quality management systems, maintained by the International Organisation for Standardisation. It means that the certified company maintains a great standard in quality that's recognised the world over.

## **CUSTOMER'S SATISFACTION**

With our main emphasis on customer satisfaction, Sabin Plastic Industries LLC has a proven track record of more than eight years of converting customer needs into superior products with competitive cost and high quality. We deliver ontime and provide value added service.

As of today, Sabin Plastic Industries LLC holds a prestigious customer base comprising of companies from all over the world.



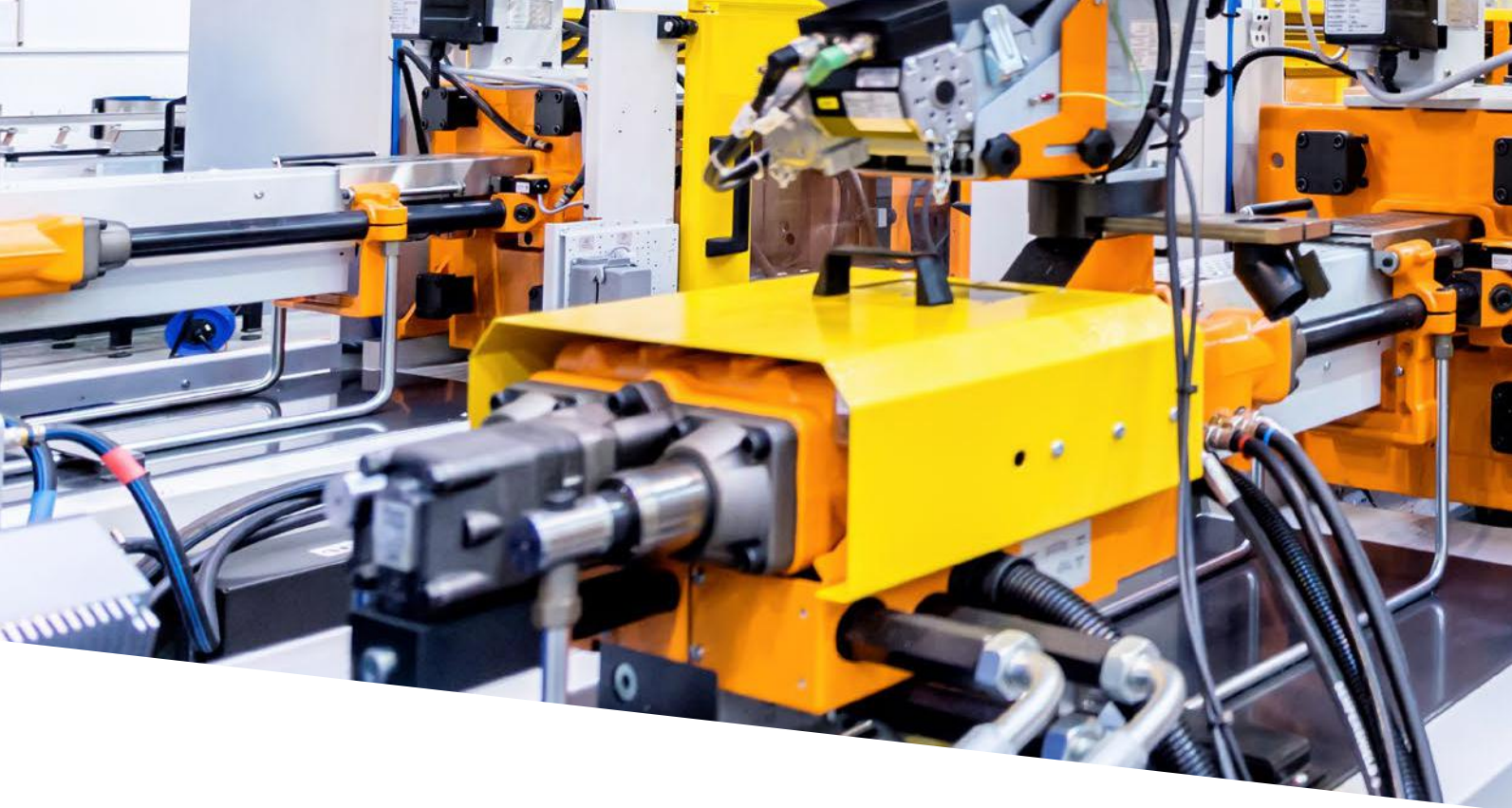
## RELIABILITY

At Sabin Plastic Industries LLC, quality focus is enforced at every aspect. Right from design to delivery, quality and customer's requirements are given paramount importance during every stage of production. All processes are continually monitored with rigorous inspection at various stages.

With the proper selection of raw materials that are 100% pure and virgin and imported from reputed brands of Europe and Middle East, our products are of high quality and widely accepted not only in the UAE, but also throughout the globe.







# Tool Room

## DESIGN

Sabin Plastic Industries L.L.C. has a full-fledged design facility that works to enhance the function and mouldability of any given plastic product according to its service industry or concept.

Our established manufacturing and maintenance facilities are fully equipped with a wide range of capabilities such as engineering production, all types of machining jobs, design, manufacturing and supply of blow moulds and injection moulds, manufacturing and supply of precision cutting dies, jigs and fixtures. They are mainly focussed on injection and blow mould maintenance.

We are equipped with state-of-the-art software i.e. CAD and a well experienced and qualified designer. We are capable of taking up product designing and mould manufacturing.

## TOOL ROOM

- CNC turning and milling centre
- CNC engraving and chemical etching
- VMC 3D printer
- Conventional milling and radial drilling
- Mould radial drilling machine
- Electric discharge machining (EDM)
- Product modelling and development division
- Inspection and quality control

## CONVENTIONAL TOOL

- Room machine
- Milling machine
- Sharper
- Surface grinding machine
- Horizontal turning centre





## Management

- Key account management
- Supply chain management
- Continuous improvement



## Development

- Conceptualisation
- Product modelling
- Design and development
- Program management



## Validation

- Plot testing
- Quality management system
- Documentation



## Manufacturing

- Precision injection moulding
- Cleanroom manufacturing
- Innovative assembly
- Industrialisation and scale-up

# Technology

## INJECTION MOULDING / BLOW MOULDING / EXTRUSION

- Over 20 machines from European and Far East nations
- Microprocessor controlled machines with capacity of 140 to 300 tonnes
- Material Processed: PE, PP, HIPS, PS, PC, ABS, SAN, PVC, Nylon, Specialise Eng. Plastics
- In-house part tooling design and 3D model generation
- In-house mould manufacturing facility with modern tooling facility
- Any quantity form short runs up to 2 million parts per month
- Rapid prototyping capacity with lead time as short as 2 weeks for some basic components
- In-house manufacturing of parts with closed loop CNC machineries
- Permanent zero defect PPM
- Colour matching and excellent batch sampling facility
- Labelling colouring, plating, insert moulding and assembly of various components
- Custom packaging and label application for retail outlets
- Industrial application moulding with PBT POM and gas assisted injection moulding
- Micro moulding facility of electronics

## PRINTING

- Printing high gloss offset and screen printing
- High quality dry offset printers; printing up to six colours

## Our Capabilities



Injection Moulding



Blow Moulding



Printing



## QUALITY ASSURANCE

We conform to quality standards right from process setup to finished goods, allowing traceability at any stage our qualified and trained polymer engineers to ensure optimum quality.

We are also equipped with

- Compression strength test equipment for top load testing
- Colour comparison equipment
- Latest quality and batch sampling
- Analytical lab systems

## FACILITIES

- Central material loading system
- Master batch dosing units for colour steadiness
- Tooling and tool maintenance systems with modern CAD-CAM technology and high-precision CNC machines including EDM and 4-axis milling
- Up to date IT infrastructure including ERP setup for sophisticated planning
- Computerised shop-floor monitoring system with Machine Data Transducer units connected with each machine and equipment for acceleration of the information exchange process between machines and ERP systems



Ultrasonic Welding



Electroplating



Packaging



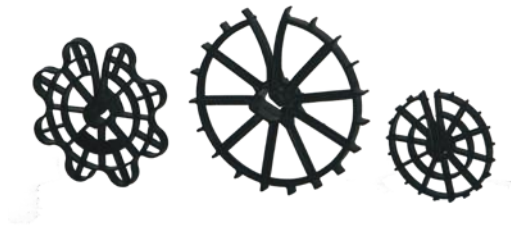
## Wheel Spacers (Pile)

Wheel spacers (open) are for reinforcing bars (construction/piling). A full range of wheel spacers are designed for accurate positioning of vertical reinforcing bars.

Size	Colour	Bar Dia	Code
75mm	Black/ Grey	Closed std.	WSR75C- 3
75mm	Black/ Grey	Open std.	WSR750P- 19
75mm	Black/ Grey	Closed new	WSR75CN- 8
75mm	Black/ Grey	Open new	WSR750N- 9
100mm	Black/ Grey	Closed	WSR100C- 7
100mm	Black/ Grey	Open	WSR1000P- 14
75mm	Black/ Grey	Closed heavy duty	WSR75CB- 6
100mm	Black/ Grey	Closed heavy duty	WS100HDC- 257

## Wheel Spacers

Wheel spacers (open) are for reinforcing bars (construction/piling). A full range of wheel spacers are designed for accurate positioning of vertical reinforcing bars.



Size	Colour	Bar Dia	Code
25mm	Black/ Grey	4 ot 8	WSR25- 90
30mm	Black/ Grey	4 to 8	WSR30- 203
30mm-T	Black/ Grey	4 to 12	WSR30T- 22
40mm	Black/ Grey	4 to 12	WSR40- 202
50mm	Black/ Grey	4 to 12	WSR50- 65
50mm-T	Black/ Grey	4 to 20	WSR50T- 43

## Chair Spacers

Chair spacers are specially designed for accurate positioning of horizontal reinforcing bars.



Size	Colour	Bar Dia	Code
25mm	Black /Grey	4 to 12	CHS25B- 200
30mm	Black /Grey	4 to 12	CHS30B- 66
40mm	Black /Grey	4 to 12	CHS40B- 64
50mm	Black /Grey	4 to 12	CHS50B- 207
60mm	Black /Grey	4 to 20	CHS60B- 201
75mm	Black /Grey	4 to 26	CHS75B- 204
75mm MD	Black /Grey	2 to 23	CHS75HD- 223
60mm	Black /Grey	4 to 20	CHS35- 23
(PRF)35mm	Black /Grey	4 to 20	CHS40- 23
(PRF)40mm	Black /Grey	4 to 20	CHSS40- 23

Chair spacer compressive strength report (Attached last page)



## Multi-Strand Anchor Spacer

Strand spacers are provided in the anchor bond zone to separate the strand and provide the minimum required grout cover around each strand for protection against corrosion and bond strength development.



Part name	Colour	ID	OD	L	Code
5 Strand small	Black	35	80	87	FSTSP- 210
5 Strand big	Black	35	110	85	FSTSP- 211
7 Strand small	Black	34	65	369	SVSTSP- 28
7 Strand big	Black	85	90	28	AS7S- 369

## Base Spacers

Our base spacers are meticulously crafted to separate ducts while ensuring that they are kept together firmly. Another feature of base spacers is that they make sure that the pipes don't touch the ground. These are modular matrix locking designed spacers used to accommodate light / hard standard conduits / pipes.



Size	Color	L	H	R	Code
4"	Black/ Grey	150	100	55	PSB4- 345
6"	Black/ Grey	205	155	80	PSB6- 276
115"	Black/ Grey	160	151.5	55	PSB4115- 345
170"	Black/ Grey	215	144	85	PSB6170- 276

## Interlock Spacers

Interlock spacers are carefully designed to ensure that the ducts are kept separately, without contact with each other. These are modular matrix locking design spacers used to accommodate light / hard standard conduits / pipes.



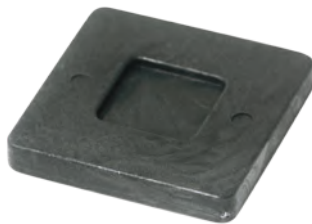
Size	Color	L	H	R	Code
4"	Black/ Grey	100	140	55	PSI4- 344
6"	Black/ Grey	160	207	80	PSI6- 275
115"	Black/ Grey	161.9	177	55	PSI4115- 344
170"	Black/ Grey	215	244	85	PSI6170- 275



## Roof Tile Spacer

Extra strong and sturdy support to assist laying slabs on flat roofs and terraces.

Diameter	Colour	Height	Code
150mm	Black	13mm	RTSR50- 59
150mm	Black	19mm	RTS19MM- 263



## Levelling Shims

Levelling shims are used for alignment and levelling of heavy section steel plate and pre-cast concrete section.

Thickness	Colour	Code
1 x 70 x 70mm	Black	PS771- 49
2 x 70 x 70mm	Black	PS772- 34
3 x 70 x 70mm	Black	PS773- 33
5 x 70 x 70mm	Black	PS775- 30
10 x 70 x 70mm	Black	PS7710- 17
100 x 95 x 10mm	Black	PS109510

## Technical Data (Spacers)

Physical Properties	Unit	Value	ASTM Method
Melt index	g/10 min	4	D-1238
Density	g/ cm <sup>3</sup>	0.960	D-1505
Vicat softening point	°C	128	D-1525
Brittleness temperature	°C	< -75	D-746
Tensile modulus at 1% elongation	Mpa	1240	D-638
Tensile strength at yield	Mpa	33	D-638
Tensile strength at break	Mpa	22	D-638
Tensile elongation at break	%	1200	D-638
Izod impact	J/ m	69	D-256
Hardness (Shore D)	---	69	D-2240
ESCR (100% Igepal), F50	Hrs	6	D-1693B

## Technical Data (Shims)

Properties (Poly Propylene)	Test Method	Unit	value
Melt flow rate (230°C, 2.16 kgs)	ASTM D 1238	g/10min	11
Melting point (DSC)	ASTM D 3418	°C	161
Crystallization point (DSC)	ASTM D 3418	°C	115
Vicat softening point (1 kg)	ISO 306A	°C	152
Tensile strength at yield	ISO 527-2/1B/50	Mpa	33
Elongation at yield	ISO 527-2/1B/50	%	10
Flexural modulus (0.05 0.25 %; 2 mm/min)	ISO 178	Mpa	1350
Izod impact (Notched at 23°C)	ISO 180-4A	K J/m <sup>2</sup>	3.5
Shore hardness D (15 sec)	ISO 868	----	68



We at Sabin Plastic LLC, have vast and in-depth knowledge about the art of custom moulding. With an ISO 9001 certification and an experienced team, we can breathe life into your designs and churn out finished goods that will match your specifications and exceed your expectations.

We specialise in custom moulding and offer a full range of design and engineering services using computerised production equipment. We can custom mould products in more or less any size, design, or quantity. Our state-of- the-art services include modern development and production technologies, which give us the ability to produce the most durable and consistent products. We use a wide range of raw materials including nylon, acrylics, styrene and polyolefin amongst others.

## Fire Cylinder Accessories

Accessories for fire cylinders. The hose is adopted with high quality vulcanizate to be sunproof and durable.



Product	Packing	Cylinder	Code
CO <sub>2</sub> discharge hose	100 Nos	5Kg	CO2DH
Dry carbon powder hose 1/2"	100 Nos	4.5Kg	PHP40
Dry carbon powder hose 3/4"	100 Nos	4.5Kg	PHP35
CO <sub>2</sub> CUP	100 Nos	2Kg	C2C- 227
Yellow seal	100 Nos	Std.	-----

## Food Packaging

Used on food packaging cans and pizza protection leg for keeping the pizza pieces arranged.



Product	Colour	Size	Code
Lid for chips cup	Yellow	65mm	PLD65- 389
Lid for drynuts cup	Yellow	84mm	PLD84- 424
Lid for drynuts cup	Yellow	99mm	PSD99- 425
Pizza protection leg	White	Std.	PPL- 41

## Insulation Accessories

### Styrofoam and Rockwool Insulation Pin

We have an array of premium quality insulator pins that are highly durable and offer top performance. They are mainly used in foamboards and insulation panels.



Size	Colour	Unit	Packing	Code
90mm	Black / Blue / White	Nos	500	RWP95N- 332



## High Performance Products

Cutomise products for concrete pumping and concrete casting.

Category	Colour	Code
Saddles	3/4" - 1"	CHS- 60
Grout pipe	As per RAL shades	CVP314
Centraliser	As per RAL shades	CNTRZ402- 402
Reducer	As per RAL shades	PRDR- 407
HDPE pad	As per RAL shades	HP1863285- 288
Joint big / Small	As per RAL shades	JBV- 228- B / JBV- 228- S
Bolt insulator	As per RAL shades	BI105406



## End Cap for Hollow Metal Profile

Plastic cap to cover open ends of square and round metal tubes, mainly used by metal furniture industries and cable management companies.

Size	Colour	Code
40 x 40mm	As per RAL shades	EC40 x 40- 26
41 x 21mm	As per RAL shades	EC41 x 21- 75
Round cap- 40mm	As per RAL shades	ECR40D- 247
Round cap- 48mm	As per RAL shades	ECR48D- 246
50 x 25mm	As per RAL shades	EC5025- 248



## Scaffoldings and Form Works

We have done extensive research to manufacture strong scaffoldings. They are also equipped to offer a solid platform to facilitate different kinds of wooden profile and form works.

Category	Size	Colour	Type	Code
H20	----	Blue	Flat	ECH2001- G2- F
H20	----	Blue	Curve	ECH2001- G2- R
Hole plug	19mm	RAL	----	MC24 - 373
Blind Hole Cap	23mm	RAL	----	BHCD23- 280



## De Watering

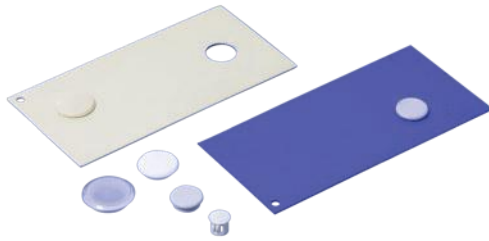
Manufactured with high quality raw materials and advanced technology, these de watering caps are suitable for underground water removal used in well point assembly.

Category	Colour	Code
Pipe end cap	Red	PCR- 32
H20	White	PCW- 55



## Panel Hole Plugs

We have a range of plastic hole plugs that are available in diverse designs and different sizes. Used as caps to cover door and profile holes, they are manufactured from products ranging from nylons to elastometers.



Size	Colour	Code
9.5mm	As per RAL shades	HP95- 421
14mm	As per RAL shades	PCC14- 416
17mm	As per RAL shades	PCC17- 310
19mm	As per RAL shades	PVCEC19- 327
22mm	As per RAL shades	CIA- 34

## Safety Cap For Steel Rods / Bars

Safety caps are mainly used at the end of tubes and rods instead of welding them. These safety caps are made out of UV stabilised strong plastic material.



Size	Colour	Code
6mm	Grey	PCC6- 79
8mm	Grey	PCC8- 79
13mm	Yellow	YC13- 120
10mm	Grey	PCC10- 79
18-16mm	Yellow	MC816
16-32mm	Yellow	MC1632

## Medical Accessories



### First Aid Box

Our first aid boxes are made with sturdy blacket clip direct to case, dust and moisture resistant seal, safe plastic locks and hinges with comfortable carrying handle.

Size	Colour	Code
Small (Custom)	White, orange and green	FABS23195- 289
Medium (Custom)	White, orange and green	FABM26168- 290
Large (Custom)	White, orange and green	FABL26209- 309



### Measuring Cup

Our high quality measuring cups can be used in hospitals and laboratories. Made with supreme raw materials, these measuring cups are resistant to 90% of chemical and acids.

Size	Colour	Packing	Unit	Code
20ml	Transparent	500 per box	Nos	-----



## Triple Corner

Made from plastic that is of superior quality, these plastic corners are used to join aluminium profiles for kitchen cabinet assembly. Extremely durable, these triple corners are made with great precision.

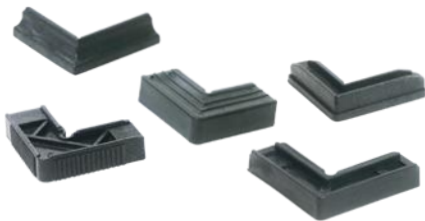
Size	Colour	Code
Standard	White	CTW- 24
Custom	As per RAL	-----
Orders	Shades	-----



## 3-Way Corner

The 3 way plastic corners are manufactured from premier quality plastic, and hence will stay intact without damage for a long time. These plastic corners are used to join aluminium profiles for kitchen cabinet assembly.

Size	Colour	Code
Standard	White	C3WEW- 36
Custom	As per RAL	-----
Orders	Shades	-----



## L Corner

These L-shaped corners are made with perfection and are an integral part of many industries. These plastic corners are used to join aluminium profiles for doors and window frames.

Category	Colour	Code
1049	Black	CR2W1049- 308
C.D.R.I.B	Black	CLCDR2814WT- 217
Naser	Black	CLN14X20WT- 215- WR
2 Way Shelf	Black	CR25- 222
1005	Black	CLS1005- 261



## Decorative Corner

Plastic corners used to join aluminium profiles for doors and windows frames.

Category	Colour	Code
Small	As per RAL shades	CDS- 48
Big	As per RAL shades	CDB- 29
Classic	As per RAL shades	CDC- 225





## Clear PC Window Shutter

Transparent modular panels or clear PC window shutters are made of polycarbonate and they match the metal shutters in their strength and durability. But a unique feature of these shutters is that they allow sunlight to pass through.

Size	Colour	Packing	Code
300 x 110mm	Transparent	200	PWS- 262



## PC Link

PC links are transparent modular panels that are used to make see through rolling shutters. They are strong, durable and offer as much stability as the metal shutters.

Size	Colour	Packing	Code
300 x 85mm	Transparent	500	PCL83305- MI271- 314



## Shutter End Clip

Shutter end clips are plastic clips or clamps used to fix the metal profile of rolling shutters. They make the process of installation easy, without having to drill through the front of the shutter. Another advantage of the clip is that it cannot be seen after the entire installation is over.

Size	Colour	Packing	Code
Custom	Custom	Custom	SEC- 322

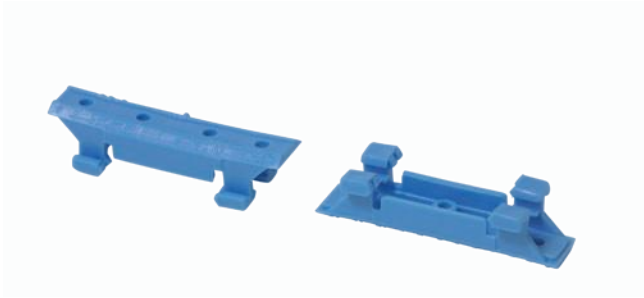
# Pail Containers



## Pail / Paint Containers

- Application for paint, lubricants, grease, chemical, glues, inks, food, fertilisers.
- Ranging from 1 gallon to 5 gallon.
- Made of excellent chemical resistant polymers.
- Suitable for extreme climatic and transportation conditions.
- Printable up to 7 colours.
- Available in different handle options in metal / plastic
- Wide range of colour choice available.
- Available in different sizes.

Size	Colour	Code
1 Ltrs. / 15Ltrs	White / custom	VSPP - 298
1 USG / 5USG / 20Ltrs	White / custom	-----



## Neutral Base

Neutral base is used to arrange the wires in electrical control panels. This helps in grouping the wires and keeping it separately, without making contact with each other.

Size	Colour	Code
Standard	Blue	PNB-27



## Energy Meter Window Glass

Energy meter window glass is attached on top of the energy meter to protect it. The window glass we produce is of excellent quality and safeguards the energy meter from scratches and dust.

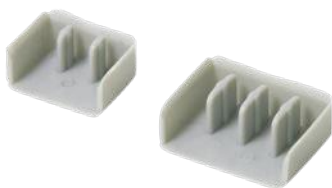
Size	Colour	Fixing	Code
Standard	Transparent Clear	Push	MWP- 71
Standard	Transparent Clear	Screw	MWS- 87



## Louver

The chief purpose of louvers is to act as ventilators in electrical control panels. The louvers we manufacture are of superior quality and blocks the dust from entering the control panel.

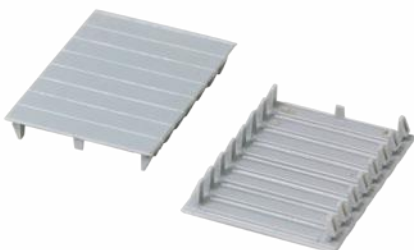
Size	Colour	Code
Standard	Light Grey / Beige	LW- 73



## 3 - Pole / 4 - Pole

3-pole and 4-pole are used to cover conductors in switch gear industries. These are essential to protect them against moisture and dust, and also to avoid electric shocks.

Category	Colour	Code
3- Pole	Grey	EC3P- 68
4- Pole	Grey	EC4P- 69



## Blanking Cover

Blanking covers are necessary to shroud exposed sockets from dust and moisture. It is highly important to use them, as they protect against accidental electric shocks.

Size	Colour	Code
Standard	Grey	BCR- 61



## U Packing (Rectangular and Horse Shoe)

These packings (Both rectangular and horse shoe) are used for alignment and levelling of aluminium frame and wall.



Thickness	Colour	Code
100 x 75 x 1mm	Black	PU 1-37
100 x 75 x 2mm	Black	PU 2-5
100 x 75 x 3mm	Black	PU 3-78
100 x 75 x 5mm	Black	PU 5-25
100 x 75 x 10mm	Black	PU 10-12
70 x 52 x 2mm	Black	PUHS 2-95
70 x 52 x 3mm	Black	PUHS 3-76
70 x 52 x 4mm	Black	PUHS 4-97
70 x 52 x 5mm	Black	PUHS 5-96
70 x 52 x 10mm	Black	PUHS 10-105

## Glass Packing

Glass packing is used for alignment and leveling of aluminium frame and glass.



Thickness	Colour	Code
100 x 10 x 1mm	White	PS 111-320
100 x 10 x 3mm	White	PS 113-319
100 x 10 x 5mm	White	PS 115-318
100 x 20 x 1mm	White	PS 121-53
100 x 20 x 3mm	White	PS 123-31
100 x 20 x 4mm	White	PS 124-63
100 x 20 x 5mm	White	PS 125-54
100 x 20 x 2mm	White	PS 122-74



## Shutter PVC male / female

Slider for aluminum fabrication/door handle and aluminum fly screen handle.

Size	Colour	Code
Standard	Black / White	SPMFB-411M / 302



## Door handle

Made from plastic that is of superior quality, these plastic door handles are mainly used on small cabinet sliding doors. Extremely durable, these plastic door handles are made with great precision.

Size	Colour	Packing	Code
Standard	White / Custom	500	DH8426- 296



## Jerry Cans

Oil cans are of different shapes and sizes. Our products are used in various industries and for household purpose to store chemicals, liquids and oils.

Size	Colour	Application	Code
1 Ltrs	White	Oil	-----
4 Ltrs	Silver	Oil / Chemical	-----
5 Ltrs	Custom	Oil / Chemical	-----

# Miscellaneous Items



## Visiting Card Box

Suitable for storing business cards and other small items. It can hold up to 200 business cards.

Size	Colour	Code
Standard	Transparent	VCB- 230



## Sofa Leg

Sofa legs are used in the furniture industry and act as a base to the sofa unit.

Size	Colour	Code
40mm	Black	SSLS- 93
50mm	Black	SSLM- 99
60mm	Black	SSLB- 98



## Aluminium Foil Cutting Blade

These plastic blades help in cutting aluminium foil paper.

Size	Colour	Code
300mm	White	CB300- 299
450mm	White	CB450- 300



## Swimming Pool Gratings

Swimming pool gartings are used as swimming pool grid. These are slipresistant and mainly used to cover the pool drain.

Size	Colour	Packing	Code
195 x 22mm	White	12.5 Mtrs / box	G19522- 249

EXPO VILLAGE DEVELOPMENT PARCEL 7,10 & 11	-
ZABEEL LINK BRIDGE	-
AL RAHA BEACH DEVELOPMENT - AL ZEINA ROADS & STRUCTURES	2011
DUBAI MARINA	2005
MINA AL ARAB	2009
MUSCAT EXPRESSWAY	2012
BAHRAIN CITY CENTRE	2008
KING ABDUL AZIZ INTERNATIONAL AIRPORT	2016
FLY DUBAI HEADQUARTER AT WARSEN	2017

# Our Clients







ISO 9001 : 2008 CERTIFIED

Appendix 15

<b>TARGET</b>		RUWAI'S HOUSING COMPLEX EXPANSION - PHASE IV CONSTRUCTION OF BACHELOR ACCOMMODATIONS PROJECT NO. 7010 AGREEMENT NO. 147010C7					
<b>MATERIAL APPROVAL REQUEST (MAR)</b>							
Serial No.	C 0 1 7 3	Rev. No.	0 0	Date	2 0 1 5 / 2 0 / 1 5	SIC Ref.	
Material Description					13 mm HDPE Roof Tile Spacer		
Trade Name	Manufacturer	Supplier	ADNOC Reg. No.				
Roof Tile Spacer	M/s. Sabin Plastic	M/s. Hammer					
Specification requirement detail	Technical Specifications:	Discipline:			Architectural		
Location / Area of use	Roof - Below Concrete Tiles						
Please refer to submittal							
<b>Attachments:</b>							
1	Specification comparison Sheet	<input checked="" type="checkbox"/>	Yes	<input type="checkbox"/>	NA	4	Other supporting documents (list):
2	Samples	<input checked="" type="checkbox"/>	Yes	<input type="checkbox"/>	NA		Test Reports
3	Original Brochure	<input checked="" type="checkbox"/>	Yes	<input type="checkbox"/>	NA		
NA : Not applicable							
Notes/Comments:							
For CONTR. <input type="checkbox"/> Accepted <input type="checkbox"/> Accepted subject to <input type="checkbox"/> Incorporate comments, resubmit before proceeding <input type="checkbox"/> Not accepted							
Comments:							
Name: <u>Rayan El Eid</u> Date: <u>20 September 2015</u> Signature:							
For ADNOC <input type="checkbox"/> Accepted <input checked="" type="checkbox"/> Accepted subject to <input type="checkbox"/> Incorporate comments, resubmit before proceeding							
Comments:							
<ul style="list-style-type: none"> <li>Contractor proposed HDPE spacer used at roof concrete tile is accepted.</li> <li>Submit warranty for approval.</li> <li>Submit the test results.</li> <li>Attach the test certificates for approval.</li> </ul>							
Name: <u>Mr. Mohammed Asayan Al Mansouri</u> Date: <u>28 SEP 2015</u> Signature:							
PCD-QSC-FMT-061 Rev 0							

APPROVAL CERTIFICATE

<b>REPORT ON DETERMINATION OF SHORE 'A' HARDNESS OF 5 M U PACKING</b>	
Page 1 of 1	
Contractor	Sabin Plastic Ind.
Address	Abu Dhabi, UAE
Client	Self
Consultant	Self
Project	NP
Sample Description	5 mm Packing Shim HDP
Sample Name	5 mm Packing Shim HDP
Source	Sharjah, U.A.E
Samples by	Mr. Mukesh
Client's Sample Ref.	NP
Size of Sample	1 Piece
Relative Humidity	50%
Testing Room Temp.	24°C
Report No.	42020 SN 1/1
Lab Project No.	P-2411AD
Sample No.	14-42020/1-10
Date of Sampling	NP
Date Sample Received	24/09/2014
Date test started	28/09/2014
Date test completed	28/09/2014
Report Date	28/09/2014
Date of Calibration	28/09/2014
S. No. of Indenter	52500
Tested by	SH
Shore 'A' Hardness	ASTM D 2240 - 05
	A/93, 1/1
Test Method	ASTM D 2240 - 05
Conditioning of Specimen	ASTM D 2240 - 05 Section 8.0
Method variation	Nil
Remarks	Type A Durometer was used to carry out the test.
Authorized Signatory	
Shajal Mahmood D. Lab Manager	
<p>Results relate only to the item tested This report shall not be reproduced except in full, without written approval of the laboratory.</p> <p>Material Lab Gulf Testing Sdn - Abu Dhabi: P.O. Box - 61531, Tel. +971 2 5003042, Fax: +971 2 5003041 Material Lab - Dubai: P.O. Box: 114717, Tel: +971 4 3405678, Fax: +971 4 3405677 Email: info@materialab.ae Website: www.materialab.ae</p>	

SHORE "A" HARDNESS REPORT

<b>LOAD TEST REPORT</b>			
Client:	Sabin Plastic Industries LLC	BCTS Report #	M1700_L
	P.O.Box: 22185, Sharjah, U.A.E	BCTS Job #	SPI-1094-1
Attention:	Mr. Sabin	Tested Date:	29.09.2015
Reference:	CRF Date: 29.09.2015	Equipment:	UTM, BCTS-M-001
		Report issued on:	29.09.2015
<b>Sample Description (As provided by client)</b>			
Sample Description:	Plastic Levelling Shims	Material:	Poly Propylene
Test Code:	ASTM D638		
<b>Test Result:</b>			
Sample ID	Material Description	Result	
M1700-1	Load Test on 3mm thick	310.15 N/mm <sup>2</sup>	
M1700-2	Load Test on 3mm thick	312.11 N/mm <sup>2</sup>	
M1700-3	Load Test on 5mm thick	318.20 N/mm <sup>2</sup>	
M1700-4	Load Test on 5mm thick	318.29 N/mm <sup>2</sup>	
M1700-5	Load Test on 10mm thick	330.25 N/mm <sup>2</sup>	
M1700-6	Load Test on 10mm thick	331.22 N/mm <sup>2</sup>	
 Lab Engineer Metallurgy Dept Form # BCTS/FR/37 R0			
Warehouse No.: 31, P.O. Box : 91785, Al Quoz - Dubai - U.A.E. Tel.: +971 4 3395515 / Fax: +971 4 3395516, E-mail : bctsiab@eim.ae Branch Office : Abu Dhabi, P.O. Box : 33097, Muasafah Industrial Area			

LOAD TEST REPORT

**MATCON TESTING LABORATORY**  
ERI Company

### REPORT ON COMPRESSIVE STRENGTH OF CHAIR SPACER

REPORT NO: RP-DB-10-04572      REPORT DATE: 16/09/2017  
REQUEST NO: RQ-DB-16-04237      SAMPLE NO: SA-DB-16-06787  
JOB ORDER NO: JO-00721-14  
PROJECT NAME: NOT GIVEN      PROJECT NO: NOT GIVEN  
CLIENT NAME: SABIN PLASTIC INDUSTRIES      SENDER'S REF: CS 33mm  
CONSULTANT: NOT GIVEN  
CONTRACTOR: NOT GIVEN  
SAMPLE DESCRIPTION: Chair Spacer      SAMPLE SIZE: 23  
SOURCE: SABIN PLASTIC INDUSTRIES      LOT NO: NOT GIVEN  
LOCATION: NOT GIVEN      LOT SIZE: NOT GIVEN  
SAMPLED BY: CLIENT      SAMPLING DATE / TIME: NOT GIVEN  
SAMPLE BROUGHT IN BY: CLIENT      RECEIVING DATE / TIME: 16/09/2016  
SAMPLING REPORT NO: NOT GIVEN

Specimen No.	Thickness (mm)	Applied Load (N)	Load at Failure (N)
1	7.5	23.3	23.3
2	7.5	25.0	25.0
3	7.5	23.3	23.3
Average Load at Failure (N)			23.9

TEST METHOD: ASTM D 1521  
TESTING DATE: 16/09/2016  
TEST METHOD VARIATION: NONE  
REMARKS: NONE  
TESTED BY: HNA

For MATCON TESTING LABORATORY  
Roy Yohannan Mathai  
Laboratory Manager

16 SEP 2016  
Matcon Testing Report

Page 1 of 1

Results related only to the items tested.  
This report shall not be reproduced except in full, without the written approval of the laboratory.  
Any unauthorized amendments/corrections will invalidate this test report.

CHAIR SPACER (7.5mm) COMPRESSIVE STRENGTH REPORT

**MATCON TESTING LABORATORY**  
ERI Company

### REPORT ON WATER BURST OF PLASTIC PIPE

REPORT NO: RP-DB-16-03045      REPORT DATE: 23/07/2016  
REQUEST NO: RQ-DB-16-02819      SAMPLE NO: SA-DB-16-04728  
JOB ORDER NO: JO-00721-14  
PROJECT NAME: NOT GIVEN      PROJECT NO: NOT GIVEN  
CLIENT NAME: SABIN PLASTIC INDUSTRIES      SENDER'S REF: NOT GIVEN  
CONSULTANT: NOT GIVEN  
CONTRACTOR: NOT GIVEN  
SAMPLE DESCRIPTION: PLASTIC PIPE / GROUT PIPE      SAMPLE SIZE: Ø  
SOURCE: SABIN PLASTIC INDUSTRIES      LOT NO: NOT GIVEN  
LOCATION: NOT GIVEN      LOT SIZE: NOT GIVEN  
SAMPLED BY: CLIENT      SAMPLING DATE / TIME: NOT GIVEN  
SAMPLE BROUGHT IN BY: CLIENT      RECEIVING DATE / TIME: 15/07/2016 @ 16:00 HRS  
SAMPLING REPORT NO: NOT GIVEN

SAMPLE NO.	Outer Diameter (mm)	Inner Diameter (mm)	Pressure applied (kpa)	Observation
1	27.28	21.40	1000	No leakage or any other mode of failure observed

TEST METHOD: ASTM D 698  
TESTING DATE: 23/07/2016  
TEST METHOD VARIATION: NONE  
REMARKS: NONE  
TESTED BY: HNA

For MATCON TESTING LABORATORY  
Roy Yohannan Mathai  
Laboratory Manager

23 JUL 2016  
Matcon Testing Report

Page 1 of 1

Results related only to the items tested.  
This report shall not be reproduced except in full, without the written approval of the laboratory.  
Any unauthorized amendments/corrections will invalidate this test report.

WATER BURST OF PLASTIC PIPE REPORT

**MATCON TESTING LABORATORY**  
ERI Company

### REPORT ON COMPRESSIVE STRENGTH OF SHIM PAD

REPORT NO: RP-DB-17-06595-01      REPORT DATE: 09/09/2017  
REQUEST NO: RQ-DB-17-07541      SAMPLE NO.: SA-DB-17-21233  
JOB ORDER NO: JO-00721-14  
PROJECT NAME: NOT GIVEN      PROJECT NO.: NOT GIVEN  
CLIENT NAME: SABIN PLASTIC INDUSTRIES      SENDER'S REF.: NOT GIVEN  
CONSULTANT: NOT GIVEN  
CONTRACTOR: NOT GIVEN  
SAMPLE DESCRIPTION: SHIM PAD / 76 X 76      SAMPLE SIZE: Ø1  
SOURCE: SABIN PLASTIC INDUSTRIES      LOT NO.: NOT GIVEN  
LOCATION: SHARJAH- UAE      LOT SIZE: NOT GIVEN  
SAMPLED BY: CLIENT      SAMPLING DATE / TIME: NOT GIVEN  
SAMPLE BROUGHT IN BY: CLIENT      RECEIVING DATE / TIME: 09/09/2017  
SAMPLING REPORT NO.: NOT GIVEN

Specimen No.	Width (mm)	Thickness (mm)	Force (kN)	Compressive Strength (N/mm <sup>2</sup> )
1	66.9	10.2	484.4	709.6

TEST METHOD: ASTM D 638  
TESTING DATE: 09/09/2017  
TEST METHOD VARIATION: NONE  
REMARKS: This report supercedes document RP-DB-17-06595 dated 03/09/2017  
TESTED BY: HNA

For MATCON TESTING LABORATORY  
Rajeev Kumar  
Laboratory Manager

06 SEP 2017  
Matcon Testing Report

Page 1 of 1

Results related only to the items tested.  
This report shall not be reproduced except in full, without the written approval of the laboratory.  
Any unauthorized amendments/corrections will invalidate this test report.

SHIM PAD COMPRESSIVE STRENGTH REPORT

**Dewan Architects - Engineers**      **PMKConsult**      **FLY DUBAI HQ**      **UPC**

### SUBMITTAL TRANSMITTAL (DOCUMENT)

Project: FLYDUBAI NEW HEADQUARTERS BUILDING ON PLOT NO. 8110841 AT WARSAW 3RD AREA, DUBAI, UAE      Date: 03<sup>rd</sup> Oct, 2017  
Engineer Project Number: D15-99  
Submittal No.: F242-FLYDUBAI-DS-009      Revision: 03

TRANSMITTAL To: M/S DEWAN ARCHITECTS      Date: 03<sup>rd</sup> October 2017  
From: UNIVERSAL PILING FOUNDATION LLC      Name/Sign: RAVI KARANDIKAR

Disciplines:  Architectural  Structural  A/C  Electrical  Plumbing  Landscaping  Material Data sheet

Title / Description: REVISED MATERIAL DATA SHEET FOR PLASTIC SPACER (M/S SABIN PLASTIC IND.L.L.C.) ALONG WITH COMPLIANCE SHEET & SAMPLE OF SPACER

Enclosures/Attachments:  
 Material Data sheet along with Compliance sheet

Submitted for review and approval       Substitution involved - Substitution request attached  
 Resubmitted for review and approval       Resubmission-Comment reply sheet attached  
 Submitted for information only       If substitution involved submission includes point-by-point comparative data or preliminary details  
 Complies with Contract requirements       Items included in submission will be ordered immediately  
 Will be available to meet construction schedule       Engineer review time included in construction schedule upon receipt of approval

TRANSMITTAL To: M/S PMK CONSULT      Attn: MR. MIKE CAIRNEY  
From: M/S DEWAN ARCHITECTS + ENGINEERS      Date Rec'd by Consultant:

Approved       Revise / Resubmit  
 Approved as noted       Rejected / Resubmit

Other remarks on above submission:  Down One (099/2442) by sender

Name: \_\_\_\_\_ Sign: \_\_\_\_\_ Date Transm'd by Engineers: 03 OCT 2017

Page 1 of 2      Form F12.5A

FLYDUBAI HQ - PROJECT









# Location



# Contact US

SABIN PLASTIC INDUSTRIES LLC.  
P.O.Box 22185,  
Sharjah, UAE  
Tel: +971 6 503 5353

P.O. Box 2349,  
Dubai, UAE  
Tel: +971 4 3476444

P.O. Box 91585,  
Abu Dhabi, UAE  
Tel: +971 2 5507929

P.O.Box 22185,  
Doha, Qatar  
Tel: +974 4 417 7370

Web : [www.sabinplastic.com](http://www.sabinplastic.com)  
Email : [info@sabinplastic.com](mailto:info@sabinplastic.com)





[www.sabinplastic.com](http://www.sabinplastic.com)

Sabin Plastic Industries L.L.C. is a subsidiary of Gadoya Holdings ([www.gadoyaholdings.com](http://www.gadoyaholdings.com))