

VALVES

SANFIT METAL offers sanitary stainless steel valves for applications within the food, dairy, beverage, and personal care industries.

This brochure includes the following high quality sanitary valves:

止回閥

蝶閥

球閥

視窗

Y型過濾器

換向閥

取樣閥

隔膜閥

桶底閥

Spring Check Valves

Butterfly Valves

Ball Valves

Sight Glass

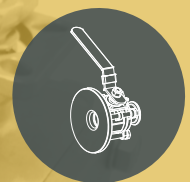
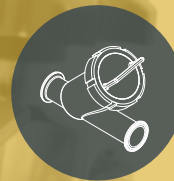
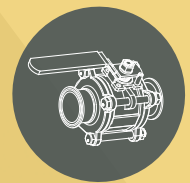
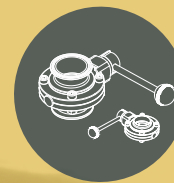
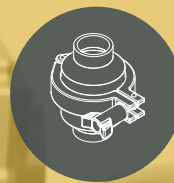
Y-Type Strainer

Pneumatic Seat Valve

Sampling Valves

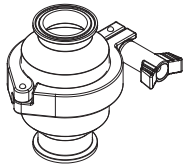
Diaphragm Valves

Tank Valves

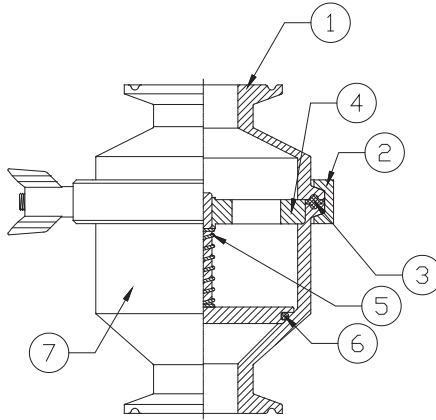
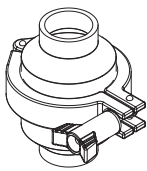


CHECK VALVE INFORMATION

CLAMP TYPE



WELD TYPE

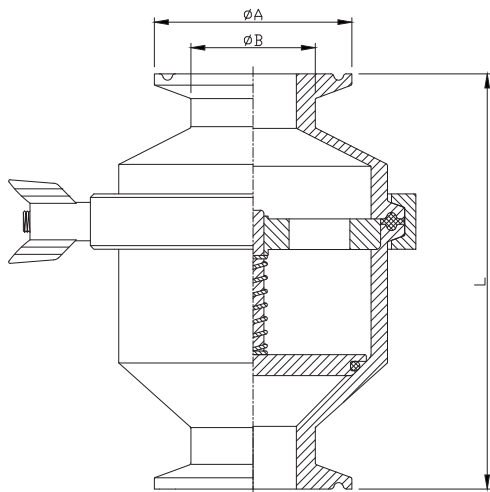


MATERIALS LIST

NO	PART	MATERIAL
1	OUTLET	SUS-304, 316, 316L
2	CLAMP	SUS-304
3	GASKET	VITON, EPDM, SILICONE
4	PLATE	SUS-304, 316, 316L
5	SPRING	SUS-304, 316
6	SEAL	VITON, EPDM, SILICONE
7	INLET	SUS-304, 316, 316L

WORKING PRESSURE 0.6-10 BAR

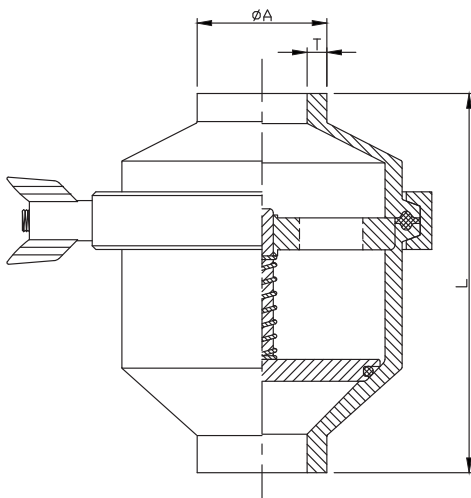
CHECK (NON-RETURN) VALVES-CLAMP



UNIT:mm

SIZE	Ø A	Ø B	L
1"	50.5	25.4	87.5
1.5"	50.5	38.1	95.5
2"	64.0	50.8	104.5
2.5"	77.5	63.5	116.2
3"	91.0	76.2	123.5
4"	119.0	101.6	123.5

CHECK (NON-RETURN) VALVES-WELD



UNIT:mm

SIZE	Ø A	T	L
1"	25.4	1.65	77.5
1.5"	38.1	1.65	80.5
2"	50.8	1.65	85.5
2.5"	63.5	1.65	96.5
3"	76.2	1.65	104.5
4"	101.6	2.10	104.5

BUTTERFLY VALVE INFORMATION

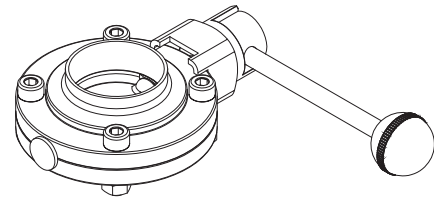
ACTUATOR FOR BFV



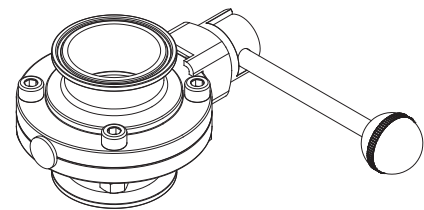
Pressure

- 4 Bar Air To Air, Full Open And Close
- 5.5 Bar Air To Spring, Full Open And Close
- Suitable For 1" to 4" Butterfly Valve (Welded Type, Clamp Type)

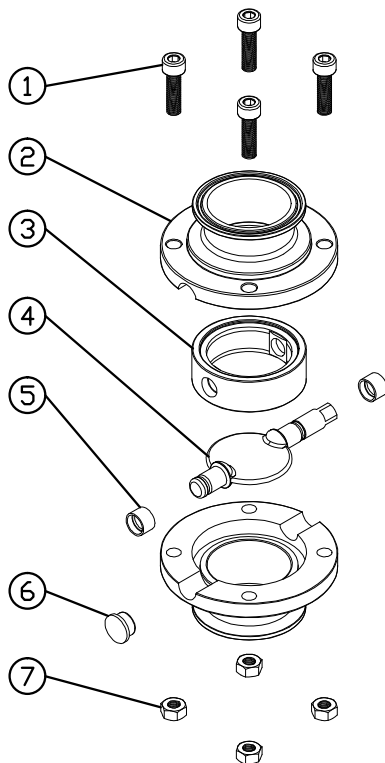
WELD TYPE



CLAMP TYPE



BFV EXPLODED VIEW DRAWING & MATERIAL LIST



Connection Clamp, Butt-Weld, Male Part

Pressure 1"-4" 145 PSI @ 68°F

Temperature Range -15°F To 200F (-10°C To 95°C)

NO	DESCRIPTION	MATERIAL	QTY
1	BOLT	304	4
2	BODY	304/316L	2
3	SEAL	SILICONE/EPDM/ VITON	1
4	DISC	304/316L	1
5	BUSH	ABS	2
6	CAP PLUG	ABS	1
7	NUT	304	4

BFV HANDLE

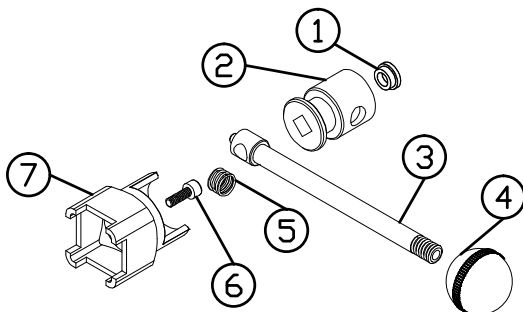


Pull Handle
4 Positiom



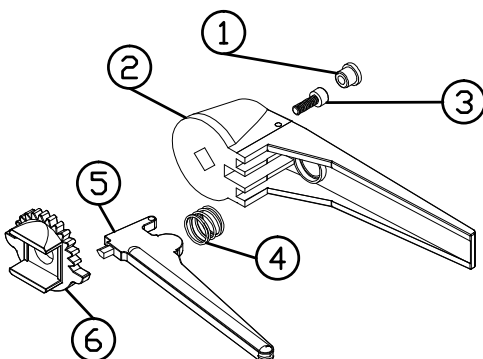
Gripper Handle
12 Position

4 POSITION PULL HANDLE



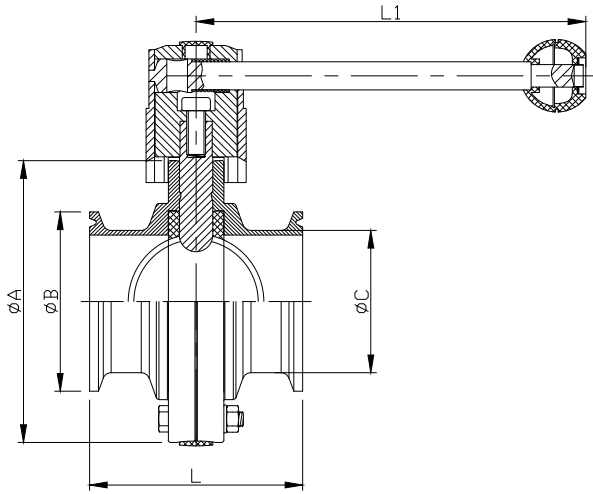
NO	DESCRIPTION	MATERIAL	QTY
1	CAP PLUG	ABS	1
2	SHAFT	304	1
3	SHAFT-BAR	304	1
4	KNOB	PLASTIC	1
5	SPRING	304	1
6	HANDLE SCREW	304	1
7	HOLDER	304	1

12 POSITION GRIPPER HANDLE



NO	DESCRIPTION	MATERIAL	QTY
1	CAP PLUG	ABS	1
2	HANDLE	PLASTIC	1
3	HANDLE SCREW	304	1
4	SPRING	304	1
5	GIRPPER-BAR	304	1
6	NOTCH PLATE	304	1

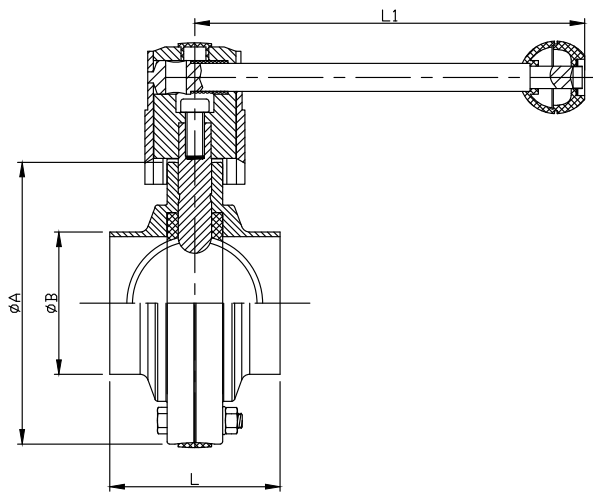
BFV-C BUTTERFLY VALVE CLAMP



UNIT:mm

SIZE	Ø A	Ø B	Ø C	L	L1
1"	78.0	50.5	38.1	66.0	136.0
1.5"	86.0	50.5	38.1	70.0	136.0
2"	100.0	64.0	50.8	76.0	136.0
2.5"	115.0	77.5	63.5	80.0	136.0
3"	128.0	91.0	76.2	84.0	163.0
4"	154.0	119.0	101.6	104.0	163.0
6"	225.0	166.8	152.4	130.0	185.0

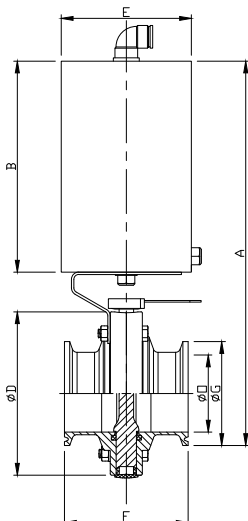
BFV-W BUTTERFLY VALVE WELD



UNIT:mm

SIZE	Ø A	Ø B	L	L1
1"	78.0	25.4	50.0	136.0
1.5"	86.0	38.1	50.0	136.0
2"	100.0	50.8	52.0	136.0
2.5"	115.0	63.5	56.0	136.0
3"	128.0	76.2	58.0	163.0
4"	154.0	101.6	64.0	163.0
6"	225.0	152.4	80.0	185.0

ACTUATED BUTTERFLY VALVE



UNIT:mm

SIZE	A	B	Ø D	E	F	Ø G	Ø O
1"	258.0	148.0	78.0	86.0	66.0	50.5	22.1
1.5"	266.0	148.0	86.0	86.0	70.0	50.5	34.8
2"	280.0	148.0	100.0	86.0	76.0	64.0	47.5
2.5"	295.0	148.0	115.0	86.0	80.0	77.5	60.2
3"	308.0	148.0	128.0	86.0	84.0	91.0	72.9
4"	334.0	148.0	154.0	86.0	104.0	119.0	97.4
6"	440.0	183.0	225.0	108.0	130.0	166.8	146.8

BALL VALVE INFORMATION

SANITARY 2WAY-BALL VALVE



CLAMP END



BUTT WELD END

SANITARY 3WAY-BALL VALVE



CLAMP END



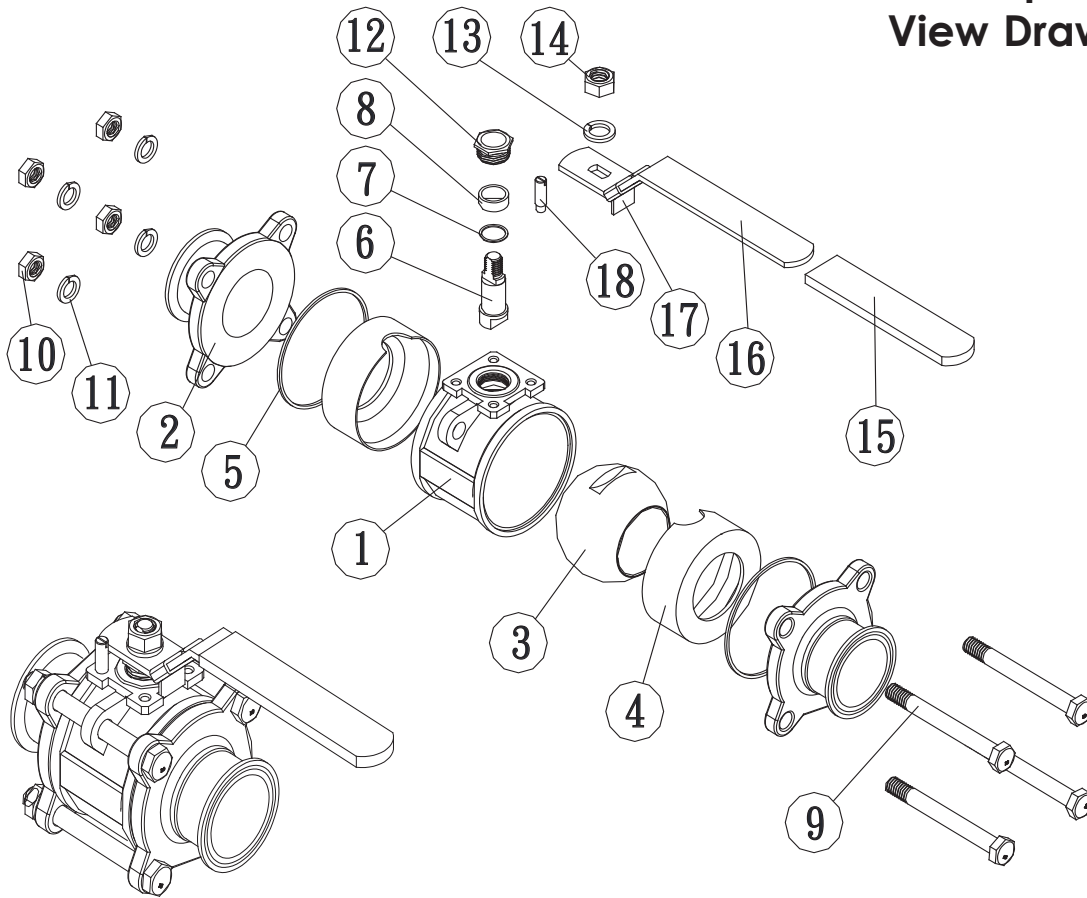
BUTT WELD END

ACTUATED BALL VALVE

Available for
CLAMP and
BUTT WELD TYPE



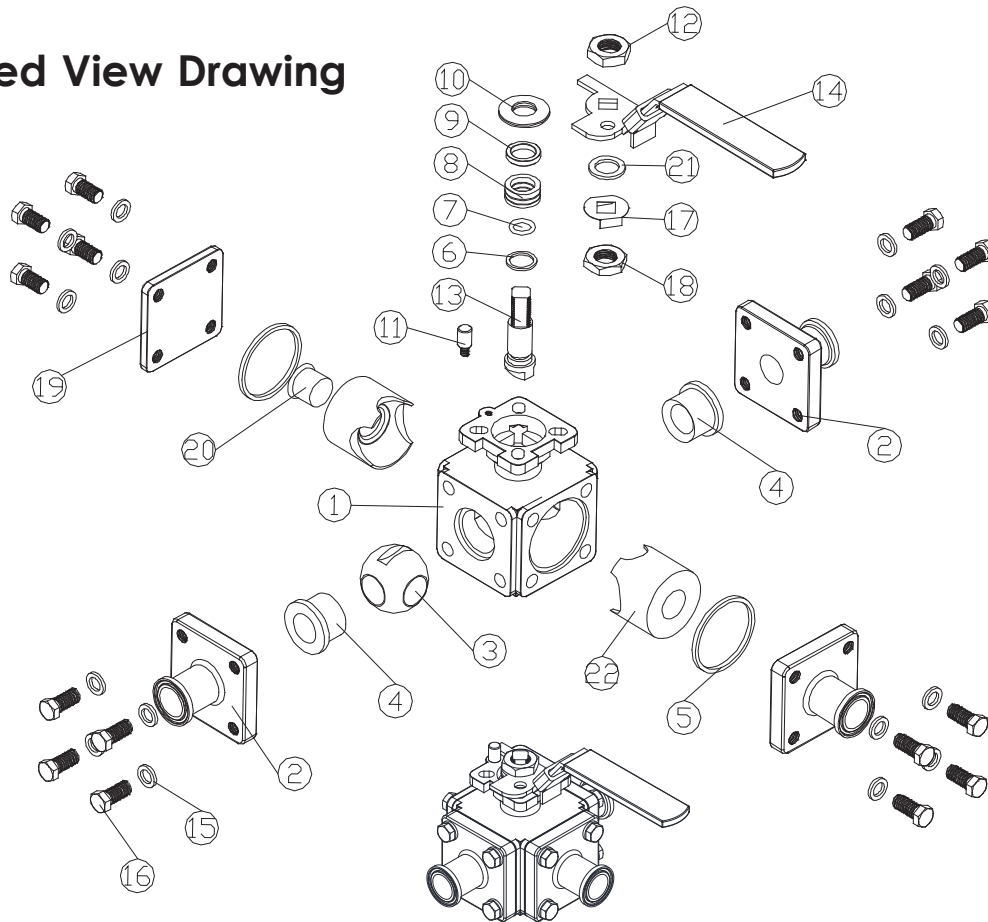
2WAY BALL VALVE

Exploded
View Drawing

NO	PART NAME	SPECIFICATION	QTY
1	BODY	ASTM A351 CF8M	1
2	END CAP	ASTM A351 CF8M	2
3	BALL	A351-CF8M	1
4	SEAT	PTFE	2
5	GASKET	PTFE	2
6	STEM	ANSI-316	1
7	THRUST WASHER	PTFE	1
8	STEM PACKINGS	PTFE	1
9	BOLTS	ANSI-304	4
10	BOLT NUTS	ANSI-304	4
11	BOLT WASHERS	ANSI-304	4
12	GLAND	ANSI-304	1
13	WASHER	ANSI-304	1
14	HANDLE NUT	ANSI-304	1
15	PLASTIC COVER	PLASTIC	1
16	HANDLE	ANSI-304	1
17	LOCKING DEVICE	ANSI-304	1
18	STOP PIN	ANSI-304	1

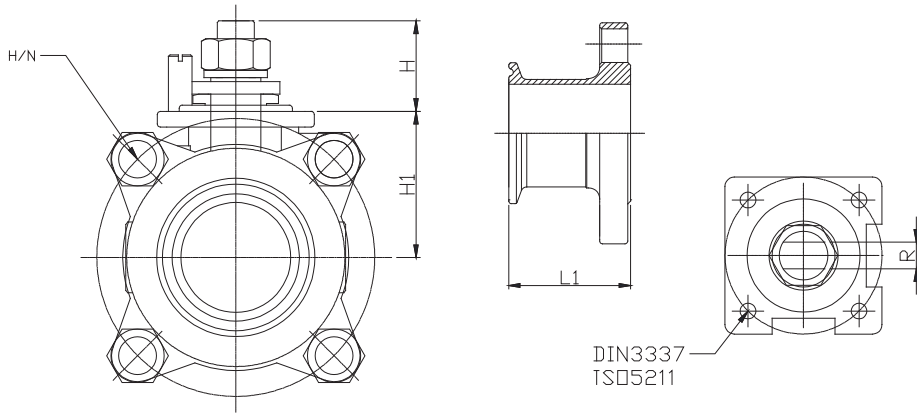
3WAY BALL VALVE

Exploded View Drawing

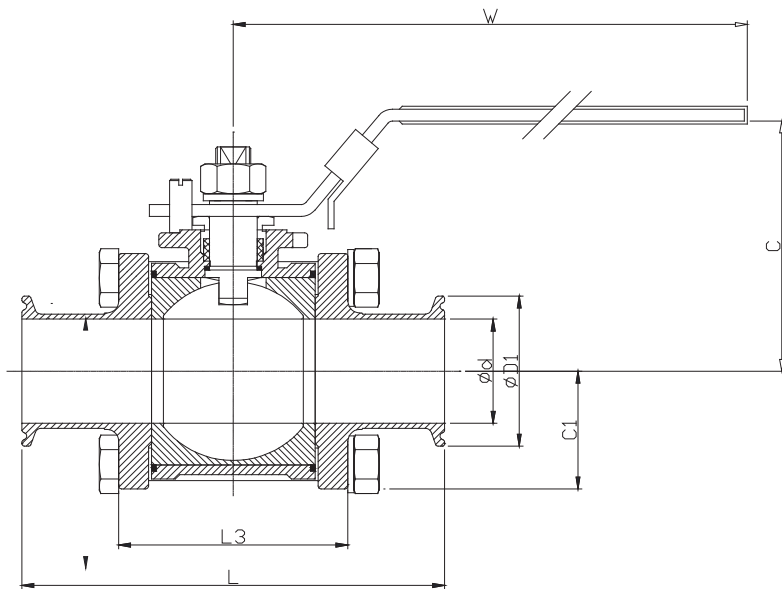
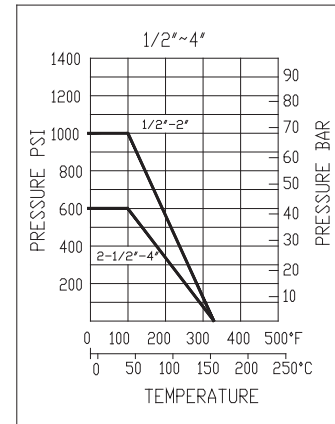


NO	PART	MATERIAL		QTY
1	BODY	A351-CF8M	A351-CF3M	1
2	CAP	A351-CF8M	A351-CF3M	4
3	BALL	A351-CF8M	A351-CF3M	1
4	SEAT1	PTFE	PTFE	2
5	GASKET	PTFE	PTFE	2
6	THRUST WASHER	PTFE	PTFE	1
7	O-RING	VITON	VITON	1
8	STEM PACKING	PTFE	PTFE	1
9	RING	AISI 316	AISI 304	1
10	BEVEL WASHER	AISI 301	AISI 301	2
11	STOP PIN	AISI 316	AISI 316	1
12	NUT	AISI 304	AISI 304	1
13	STEM	AISI 316	AISI 316	1
14	HANDLE	AISI 304	AISI 304	1
15	SPRING WASHER	AISI 304	AISI 304	16
16	BOLT	AISI 304	AISI 301	16
17	LOCKING TAB	AISI 304	AISI 304	1
18	THINNER NUT	AISI 304	AISI 304	1
19	END CAP	A351-CF8M	A216-WCB	1
20	SEAT BACK	PTFE	PTFE	1
21	PLAIN WASHER	AISI 304	AISI 304	1
22	SEAT2	PTFE	PTFE	2

2WAY-BAV-C 2WAY BALL VALVE CLAMP END



PRESSURE TEMPERATURE RATING



SERIES : Y30MCS
THREE PIECE TWO-WAY SANITARY
BALL VALVE CLAMP END

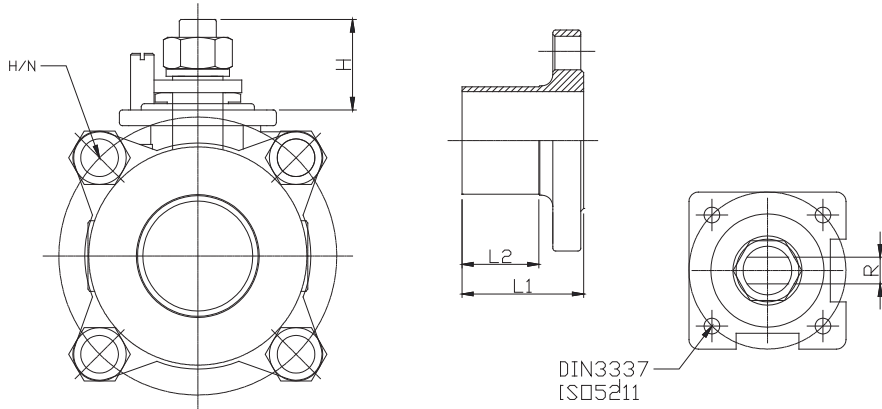
FEATURES :

- * SIZE AVAILABLE FROM 1/2" TO 4"
- * LOCKING DEVICE HANDLE
- * BLOW-OUT PROOF STEM
- * ISO 5211 DIRECT MOUNTING PAD
- * MATERIAL: PASSIVATED 316 STAINLESS STEEL (ASTM A351, CF8M)
- * PTFE CAVITY FILLER, FULLY ENCAPSULATED

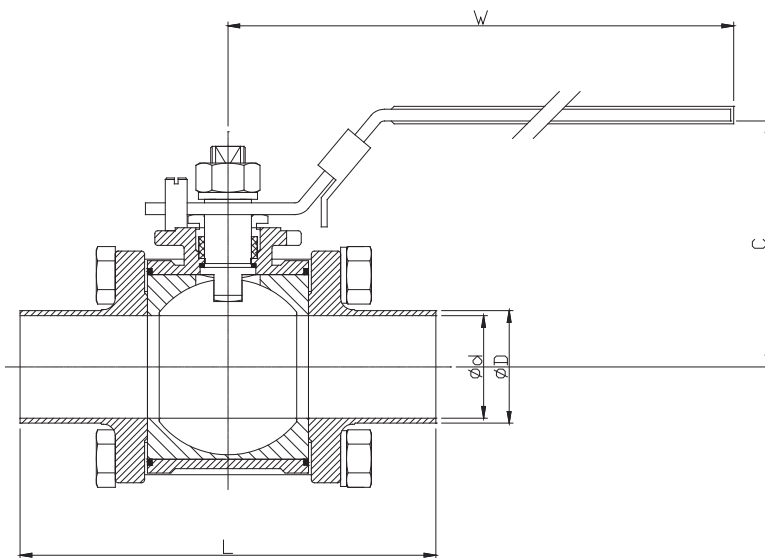
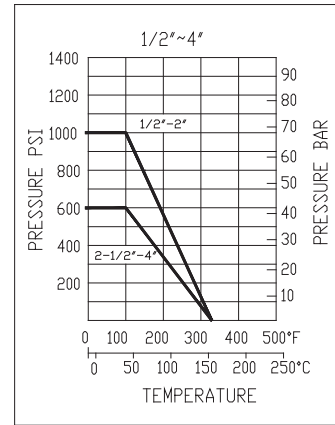
DIMENSION (MM)

SIZE	DN	ISO 5211	H	C	L	W	ød	øD	L1	L3	C1	H1	R	H/N	TORQUE IN/LBS		
1/2"	15	F03	18.0	60	89	132	9.5	25.4	32.8	43.5	24.5	29.5	5.0	M8xP1.25	4	46.2	42
3/4"	20	F03	18.5	65	101	132	15.9	25.4	36.5	48	27	34	5.0	M8xP1.25	4	53	58
1"	25	F04	22.5	69	114	165	22.2	50.4	40	53	29.2	34.5	6.5	M8xP1.25	4	60	83
1.5"	40	F05	29.6	89	140	194	35	50.4	43.5	75	40.3	48	8.5	M12xP1.75	4	84.5	150
2"	50	F05	29.6	97	156	194	47.6	63.9	45.8	88.5	47.6	45	8.5	M12xP1.75	4	103.5	298
2.5"	65	F07	44.5	127	197	252	60.3	77.5	56	111	62	75.8	12	3/4"x10UNC	4	136	512
3"	80	F07	44.5	135	229	252	73.0	90.9	64.5	130	68.7	84.5	12	3/4"x10UNC	4	155	685
4"	100	F10	48.8	159	243	333	97.4	118.9	60.6	153.5	100.5	105	16	1"x8unc	6	193	996

2WAY-BAV-W 2WAY BALL VALVE WELD END



PRESSURE TEMPERATURE RATING



SERIES : Y30MBS

THREE PIECE TWO-WAY
SANITARY BALL VALVE WELD END

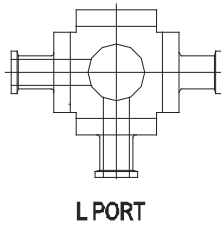
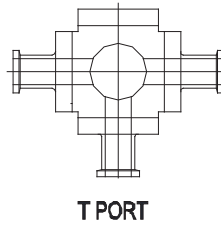
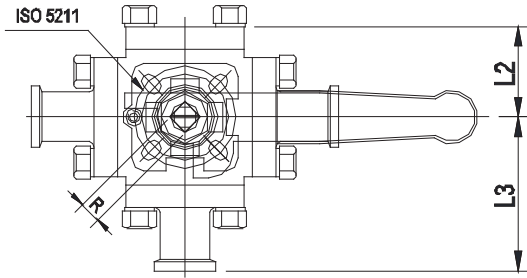
FEATURES :

- * SIZE AVAILABLE FROM 1/2" TO 4"
- * LOCKING DEVICE HANDLE
- * BLOW-OUT PROOF STEM
- * ISO 5211 DIRECT MOUNTING PAD
- * MATERIAL: PASSIVATED 316 STAINLESS STEEL (ASTM A351, CF8M)
- * PTFE CAVITY FILLER, FULLY ENCAPSULATED

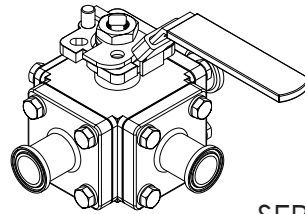
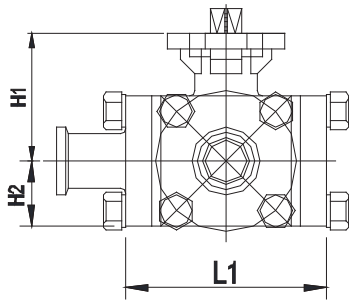
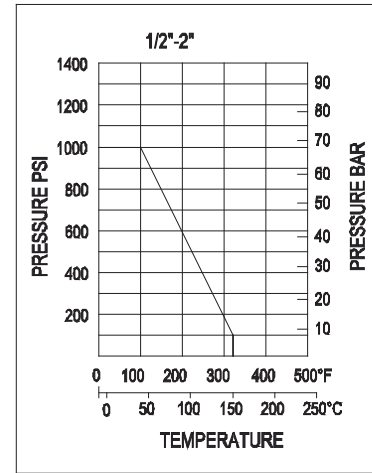
DIMENSION (MM)

SIZE	DN	ISO-5211	H	C	R	L	W	ø d	ø D	L1	L2	TORQUE IN/LBS	H/N
1/2"	15	F03	18.0	60	5.0	89	132	9.5	12.7	32.75	20	42	4
3/4"	20	F03	18.5	65	5.0	101	132	15.9	19.1	36.5	20	58	4
1"	25	F04	22.5	69	6.5	114	165	22.2	25.4	40	25	83	4
1.5"	40	F05	29.6	89	8.5	140	194	35	38.1	43.5	25	150	4
2"	50	F05	29.6	97	8.5	156	194	47.6	50.8	45.75	25	298	4
2.5"	65	F07	44.5	127	12.0	197	252	60.3	63.5	56	25	512	4
3"	80	F07	44.5	135	12.0	229	252	73.0	76.2	64.5	25	685	4
4"	100	F10	48.8	159	16.0	243	333	97.4	101.6	60.6	25	996	6

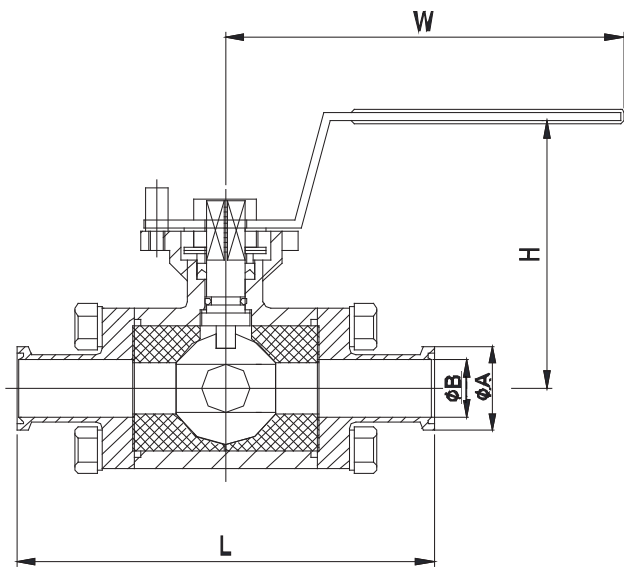
3WAY-BAV-C 3WAY BALL VALVE CLAMP



PRESSURE TEMPERATURE RATING



SERIES : Y40HCS



FOUR PIECE THREE-WAY SANITARY BALL VALVE CLAMP END

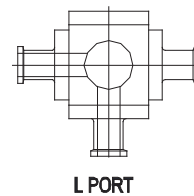
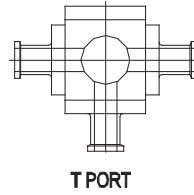
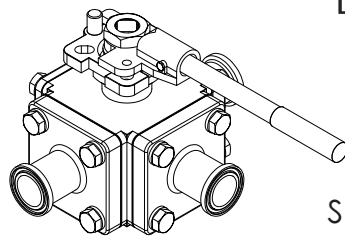
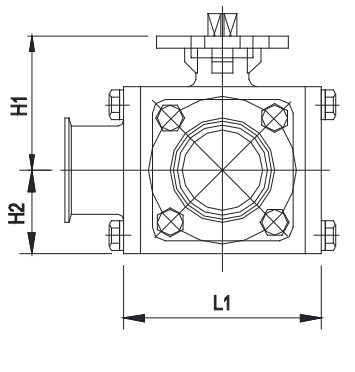
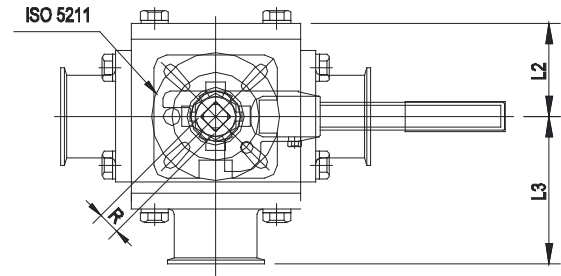
FEATURES :

- * SIZE AVAILABLE FROM 1/2" TO 2"
- * LOCKING DEVICE HANDLE
- * BLOW-OUT PROOF STEM
- * ISO 5211 DIRECT MOUNTING PAD
- * MATERIAL: PASSIVATED 316 STAINLESS STEEL (ASTM A351, CF8M)
- * PTFE CAVITY FILLER, FULLY ENCAPSULATED
- * T-PORT OR L-PORT

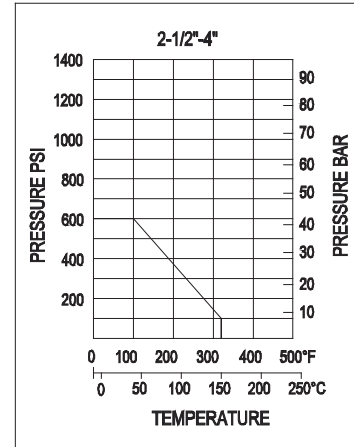
DIMENSION (MM)

SIZE	ISO-5211	W	H	H1	L	øB	øA	L1	L2	L3	H2	TORQUE		
												R	IN/LBS	
1/2"	F03 / F04	121	78	44.5	118	9.5	25.4	70	35.0	59	23.5	9	M12x1.75	79
3/4"	F03 / F04	121	82	48	127	15.8	25.4	77	38.5	63.5	26	9	M12x1.75	85
1"	F04 / F05	137	90	59	152.4	22.2	50.4	86	43.0	76.2	30.5	11	M14xP2	110
1-1/2"	F05 / F07	182	110	72	175	35	50.4	111	55.5	87.5	40	14	M18xP2.5	290
2"	F05 / F07	182	114.7	82	190	47.6	63.9	124	62.0	95.0	50	14	M18xP2.5	680

3WAY-BAV-C 3WAY BALL VALVE CLAMP



PRESSURE TEMPERATURE RATING

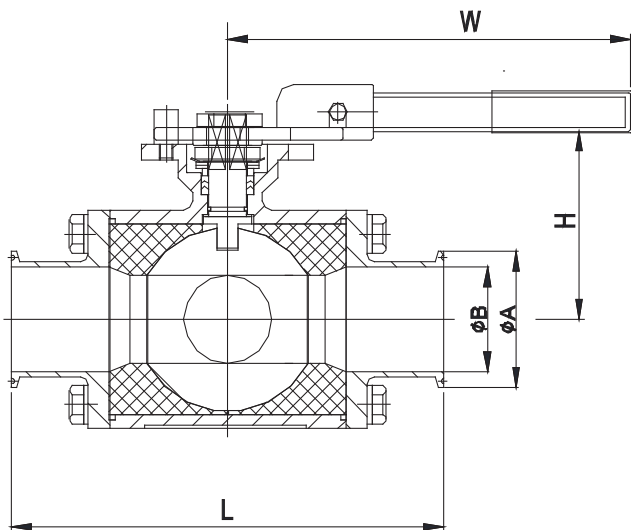


SERIES : Y40HCS

FOUR PIECE THREE-WAY SANITARY BALL VALVE CLAMP END

FEATURES :

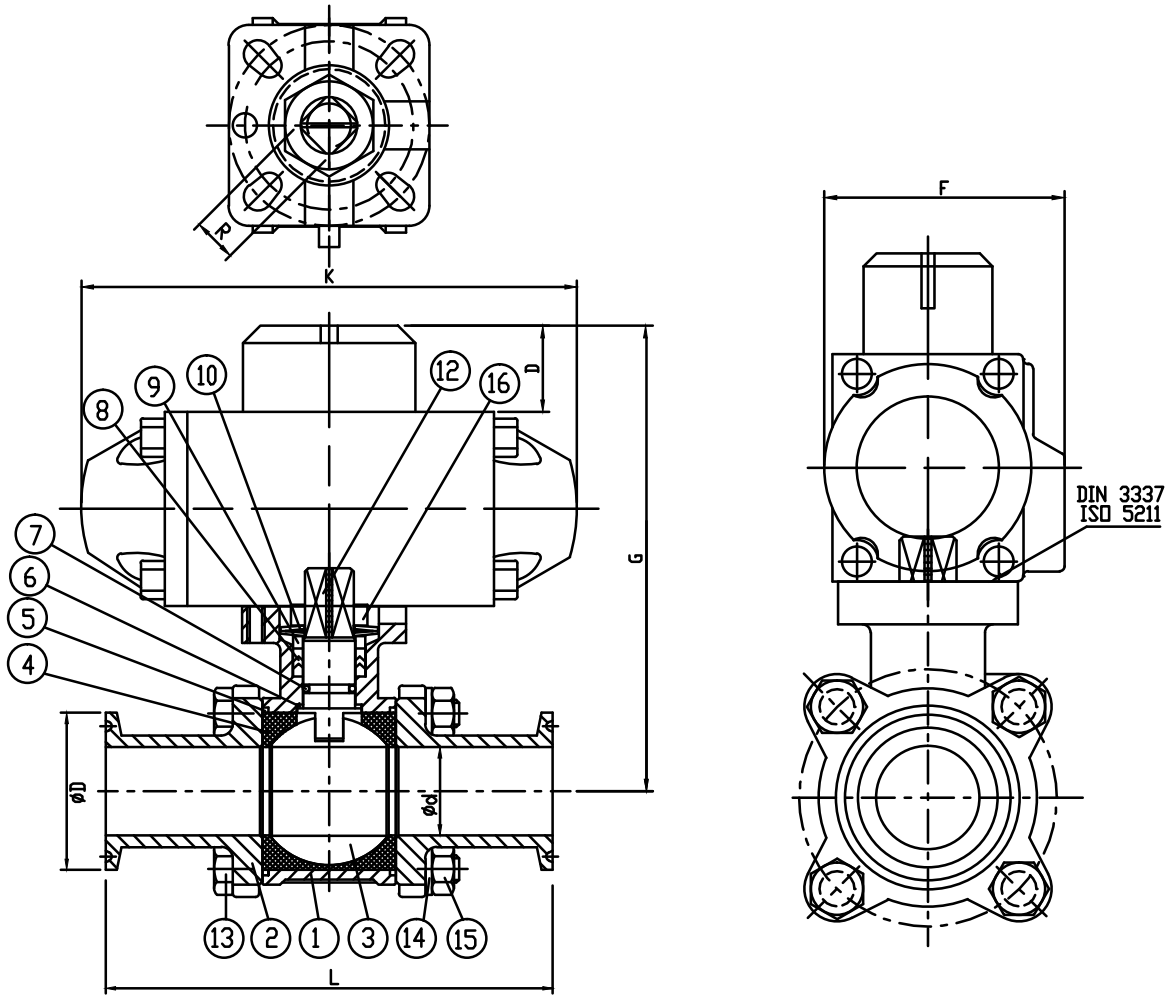
- * SIZE AVAILABLE FROM 1/2" TO 2"
- * LOCKING DEVICE HANDLE
- * BLOW-OUT PROOF STEM
- * ISO 5211 DIRECT MOUNTING PAD
- * MATERIAL: PASSIVATED 316 STAINLESS STEEL (ASTM A351, CF8M)
- * PTFE CAVITY FILLER, FULLY ENCAPSULATED
- * T-PORT OR L-PORT



DIMENSION (MM)

SIZE	ISO-5211	W	H	H1	L	ø B	ø A	L1	R	TORQUE IN/LBS	
2-1/2"	F07 / F10	370	106	100	228	60.2	77.5	62.5	7	M22*P2.5	1287
3"	F10 / F12	400	134	125.5	280	73.0	91.0	75.5	22	1-1/8**12UNF	1770
4"	F10 / F12	400	156	135.5	318	97.4	119.0	82.5	22	1-1/8**12UNF	2035

2-WAY DOUBLE ACTING ACTUATED BALL VALVE (CLAMP END)



ITEM	PARTS	MATERIAL		QTY
1	BODY	A351-CF8M	A351-CF3M	1
2	CAP	ANSI CF8M	A35F-CF3M	2
3	BALL	A351-CF8M	A351-CF3M	1
4	SEAT	PTFE	TFM1600	2
5	GASKET	PTFE	PTFE	2
6	THRUST WASHER	PTFE	PTFE	1
7	O-RING	VITON	VITON	1
8	STEM PACKING	PTFE	PTFE	1
9	RING	AISI 304	AISI 304	1
10	BEVEL WASHER	AISI 301	AISI 301	2
11	STEM	AISI 316	AISI 316	1
12	BOLT	AISI 304	AISI 304	4/6
13	BOLT WASHER	ANSI-304	AISI 304	4/8/12
14	BOLT NUT	AISI 304	AISI 304	4/8/12
15	PREVAILING NUT	AISI 304	AISI 304	1

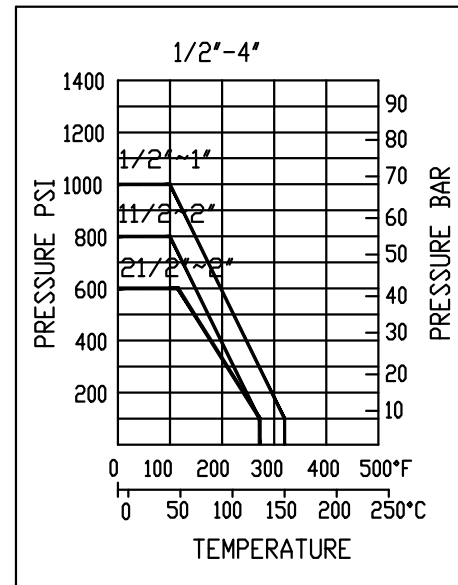
2-WAY DOUBLE ACTING ACTUATED BALL VALVE (CLAMP END)

THREE PIECE SANITARY 2-WAY
DOUBLE ACTING ACTUATED
BALL VALVE CLAMP END

FEATURES:

- *SIZE AVAILABLE FROM 1/2" TO 4"
- *PRESSURE 1000/800/600 PSI
- *BLOW-OUT PROOF STEM
- *ISO 5211 DIRECT MOUNTING PAD
- *MATERIAL: PASSIVATED 316 STAINLESS STEEL (ASTM A351, CF8M)
- *PTFE CAVITY FILLER, FULLY NCAPSULATED

PRESSURE TEMPERATURE RATING

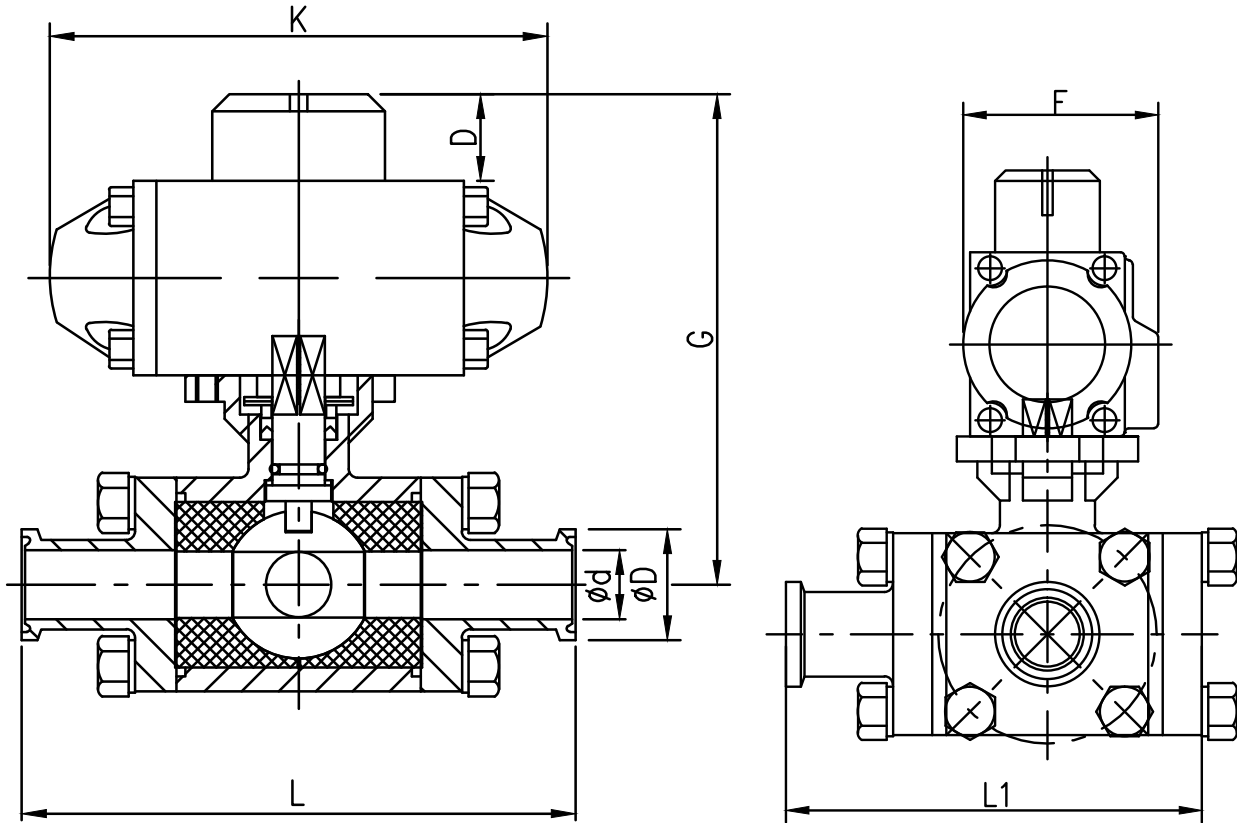


BALL VALVE / SERIE SV-3HCS							
SIZE	DN	ISO-5211	R	L	ø d	ø D	INCH TORQUE
1/2"	15	F03 / F04	9	89	9.5	25.4	60
3/4"	20	F03 / F04	9	110	15.8	25.4	75
1"	25	F04 / F05	11	114	22.2	50.4	105
1-1/2"	40	F05 / F07	14	140	35.0	50.4	190
2"	50	F05 / F07	14	156	47.6	63.9	275
2-1/2"	65	F07 / F10	17	197	60.3	77.5	680
3"	80	F07 / F10	17	229	73.0	90.9	890
4"	100	F10 / F12	22	243	97.4	118.9	1105

ACTUATOR DIMENSION (MM)

BM-DA	DN	D	F	G	K
32-DA	15	21	46	105	110
32-DA	20	21	46	107	110
50-DA	25	26	65	140	147
75-DA	40	26	81	181	184
75-DA	50	26	81	189	184
100-DA	65	30	110	243	268
125-DA	80	30	128	252	301
125-DA	100	30	128	306	301

3-WAY DOUBLE ACTING ACTUATED BALL VALVE (CLAMP END)



ITEM	PARTS	MATERIAL		QTY
1	BODY	A351-CF8M	CF3M	1
2	CAP	A351-CF8M	CF3M	4
3	BALL	A351-CF8M	CF3M	1
4	SEAT	PTFE	TFM-1600	4
5	GASKET	PTFE	PTFE	2
6	THRUST WASHER	PTFE	PTFE	1
7	O-RING	VITON	VITON	1
8	STEM PACKING	PTFE	PTFE	1
9	RING	AISI 316	AISI 304	1
10	BEVEL WASHER	AISI 301	AISI 301	2
11	STOP PIN	AISI 316	AISI 316	1
12	NUT	AISI 304	AISI 304	1
13	STEM	AISI 316	AISI 316	1
14	HANDLE	AISI 304	AISI 304	1
15	SPRING WASHER	AISI 304	AISI 304	16
16	BOLT	AISI 304	AISI 304	16
17	PREVAILING	PVEICE	AISI 304	1
18	NUT	AISI 304	AISI 304	1

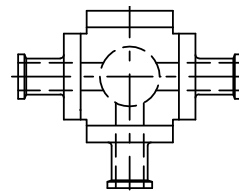
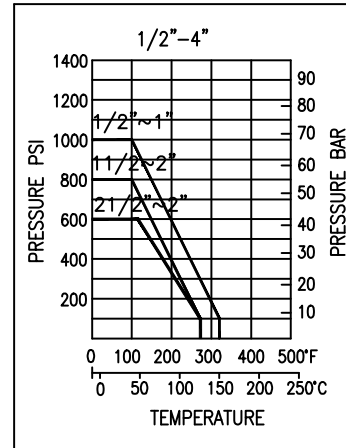
3-WAY DOUBLE ACTING ACTUATED BALL VALVE (CLAMP END)

FOUR PIECE SANITARY 3-WAY
DOUBLE ACTING ACTUATED
BALL VALVE CLAMP END

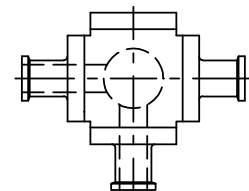
FEATURES:

- *SIZE AVAILABLE FROM 1/2" TO 4"
- *PRESSURE 1000/800/600 PSI
- *BLOW-OUT PROOF STEM
- *ISO 5211 DIRECT MOUNTING PAD
- *MATERIAL: PASSIVATED 316 STAINLESS STEEL (ASTM A351, CF8M)
- *PTFE CAVITY FILLER, FULLY NCAPSULATED
- * T-PORT OR L-PORT

PRESSURE TEMPERATURE RATING



T PORT



L PORT

ACTUATOR DIMENSION (MM)

BALL VALVE / SERIE SV-4HCS							
SIZE	DN	ISO-5211	L1	L	ø d	ø D	INCH/LBS TORQUE
1/2"	15	F03 / F04	89	118	9.5	25.4	60
3/4"	20	F03 / F04	96	127	15.8	25.4	75
1"	25	F04 / F05	115	153	22.2	50.4	105
1-1/2"	40	F05 / F07	137	175	35.0	50.4	190
2"	50	F05 / F07	153	190	47.6	63.9	275
2-1/2"	65	F07 / F10	166	228	60.3	77.5	680
3"	80	F07 / F10	193	261	73.0	90.9	890
4"	100	F10 / F12	247	290	97.4	118.9	1105

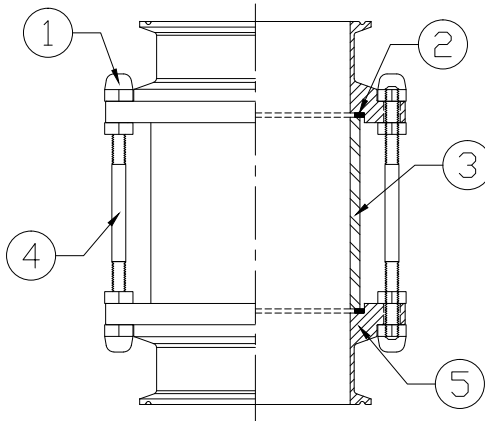
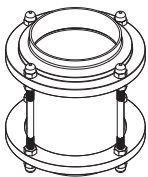
BM-DA	DN	D	F	G	K
32-DA	15	21	46	107	110
32-DA	20	21	46	114	110
50-DA	25	26	65	149	147
75-DA	40	26	81	192	184
75-DA	50	26	81	200	184
100-DA	65	30	110	251	268
125-DA	80	30	128	296	301
125-DA	100	30	128	301	301

SIGHT GLASS INFORMATION

CLAMP TYPE



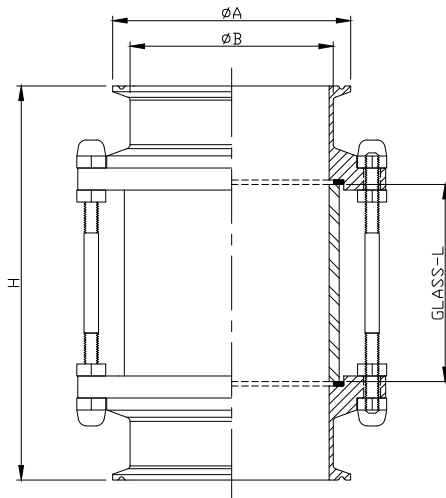
WELD TYPE



MATERIALS LIST

NO	PART	MATERIAL
1	SCREW NUT	SUS-304
2	SEAL	VITON, EPDM, SILICONE
3	GLASS	NON-TOXIC
4	SCREW BOLT	SUS-304
5	BODY	SUS-304, 316L

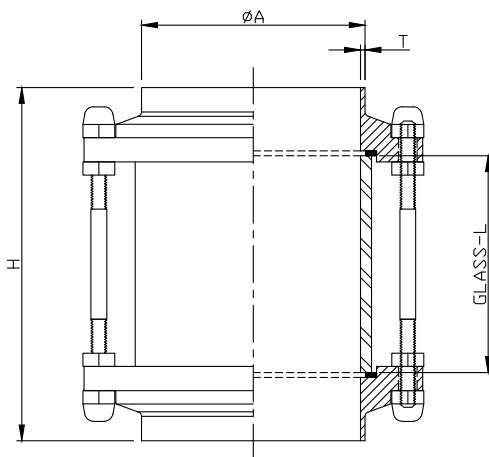
S.G-C CLAMPED STRAIGHT SIGHT GLASS



UNIT:mm

SIZE	ϕA	ϕB	H	GLASS
1"	50.5	25.4	159.0	100.0
1.5"	50.5	38.1	163.5	100.0
2"	64.0	50.8	170.0	100.0
2.5"	77.5	63.5	173.3	100.0
3"	91.0	76.2	178.0	100.0
4"	119.0	101.6	196.0	100.0

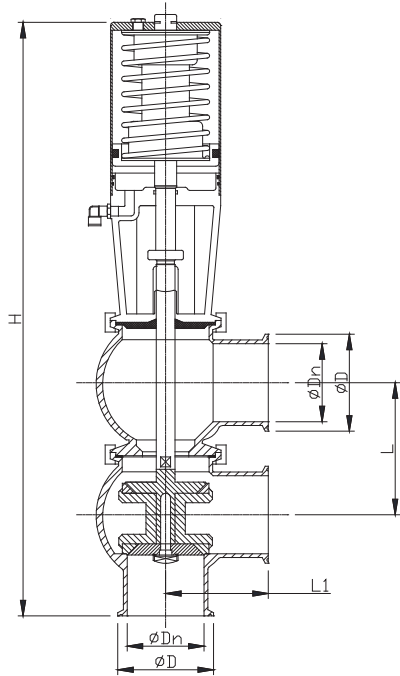
S.G-W WELDED STRAIGHT SIGHT GLASS



UNIT:mm

SIZE	ϕA	H	GLASS
1"	25.4	145.0	100.0
1.5"	38.1	163.5	100.0
2"	50.8	170.0	100.0
2.5"	63.5	150.0	100.0
3"	76.2	155.0	100.0
4"	101.6	158.0	100.0

PNEUMATIC SEAT VALVE



Flow Type

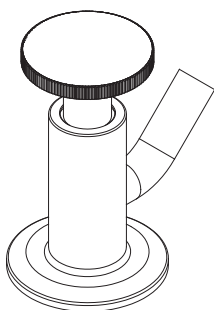
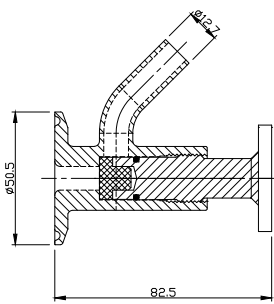
F	L/L	T/T	L/T
Y	T	L	T/L

UNIT:mm

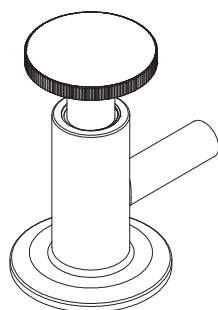
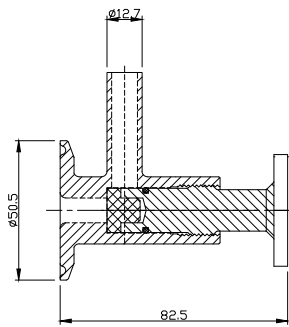
SIZE	ϕD	ϕDn	L	L1	H
1"	50.5	22.4	72.0	80.0	419.0
1.5"	50.5	35.0	72.0	80.0	419.0
2"	64.0	47.8	92.0	93.0	442.0
2.5"	77.5	60.2	100.0	98.0	480.0

SAMPLING VALVES

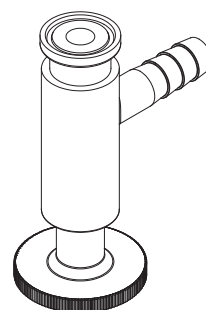
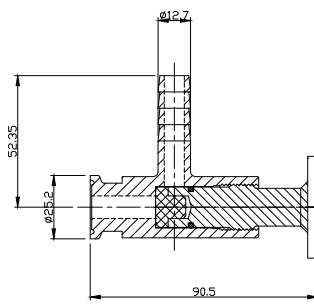
SAMPLING VALVE
45°CLAMP END-1.5"



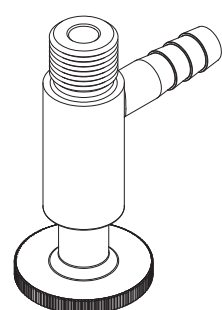
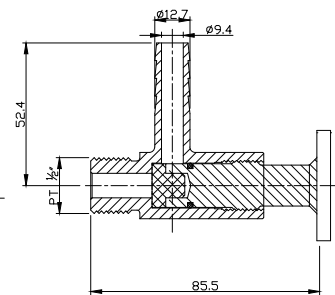
SAMPLING VALVE
90°CLAMP END-1.5"



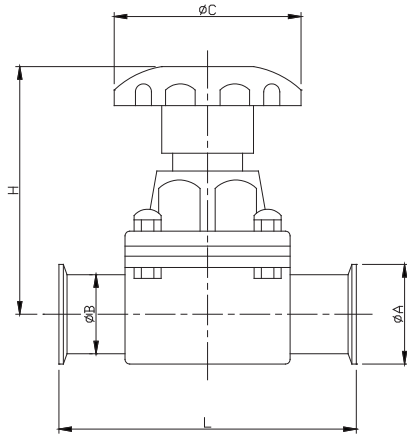
SAMPLING VALVE
CLAMP END-3/4"



SAMPLING VALVE
PIPE THREAD-1/2"



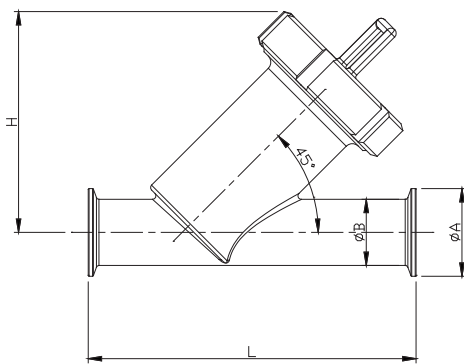
DIAPHRAGM VALVE



UNIT:mm

SIZE	ø A	ø B	ø C	L	H
1/2"	50.5	15.0	80.0	108.0	88/89
3/4"	50.5	19.05	80.0	110.0	91/102
1"	50.5	25.4	80.0	133.0	110/123
1 1/4"	50.5	31.8	80.0	150.0	129/138
1.5"	50.5	38.1	120.0	163.0	139/159
2"	64.0	50.8	120.0	191.0	159/186
2.5"	77.5	63.5	120.0	213.0	159/186
3"	91.0	76.2	120.0	225.0	159/186

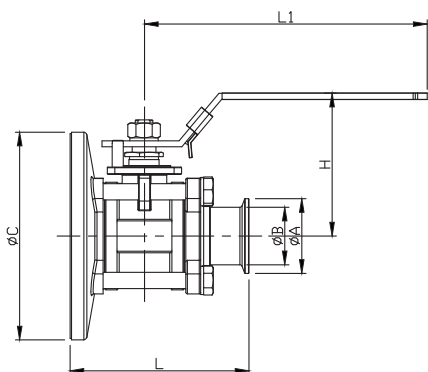
Y TYPE STRAINER



UNIT:mm

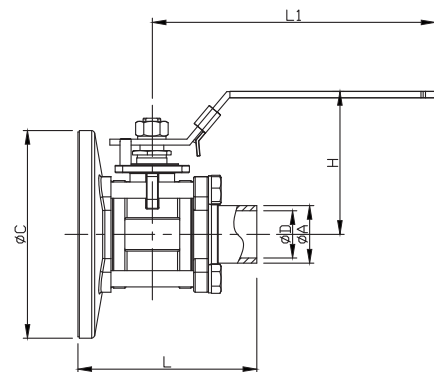
SIZE	ø A	ø B	H	L
1"	50.5	25.4	95.0	145.0
1 1/4"	50.5	31.8	110.0	165.0
1.5"	50.5	38.1	120.0	180.0
2"	64.0	50.8	140.0	220.0
2.5"	77.5	63.5	175.0	280.0
3"	91.0	76.2	195.0	350.0
4"	119.0	101.6	260.0	500.0

TANK VALVE



◀ CLAMP TYPE

▶ WELD TYPE



UNIT:mm

SIZE	ø A	ø B	ø C	ø D	L	L1	H
1.5"	50.5	38.1	140.0	35.1	119.0	170.0	94.0
2"	64.0	50.8	140.0	47.8	133.5	170.0	102.5
2.5"	77.5	63.5	180.0	59.5	164.0	240.0	120.0
3"	91.0	76.2	200.0	73.0	184.0	240.0	130.0