

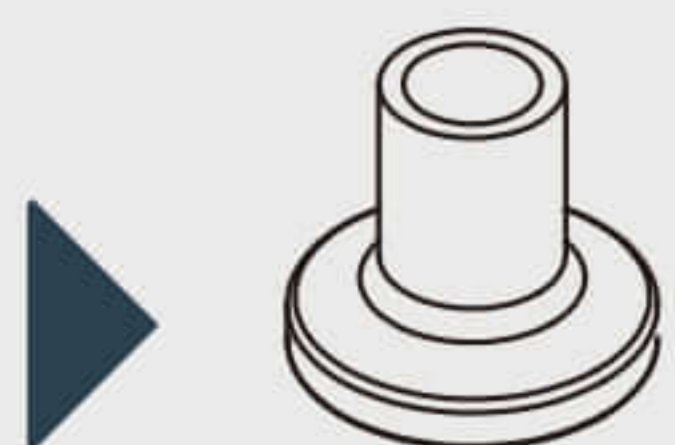
TRI CLAMP FITTINGS

Tri-clamps are one of the most common types of pipe connections in the food, beverage, biotech, and pharmaceutical industries. This type of connection consists of a gasket compressed between two tri-clamp fittings, and a clamp which holds it all together.

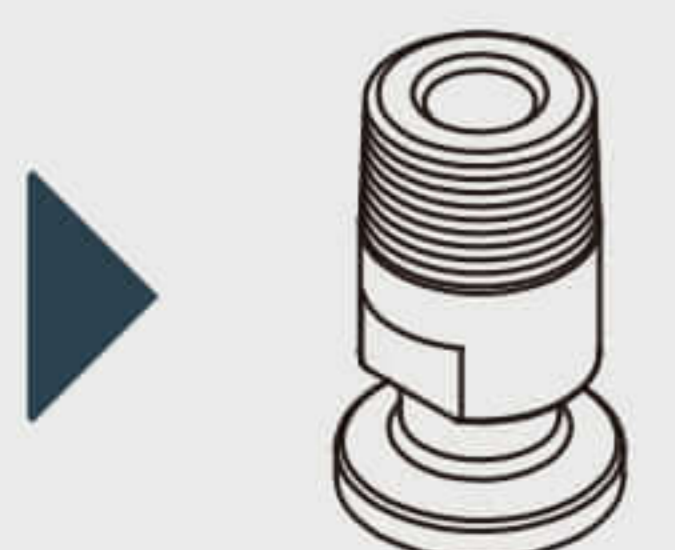


Benefits of using Tri-Clamp Fittings

- Easy to install and dismantle
- Superior corrosion resistance
- Low cost
- Clean in place
- Leak-tight connections



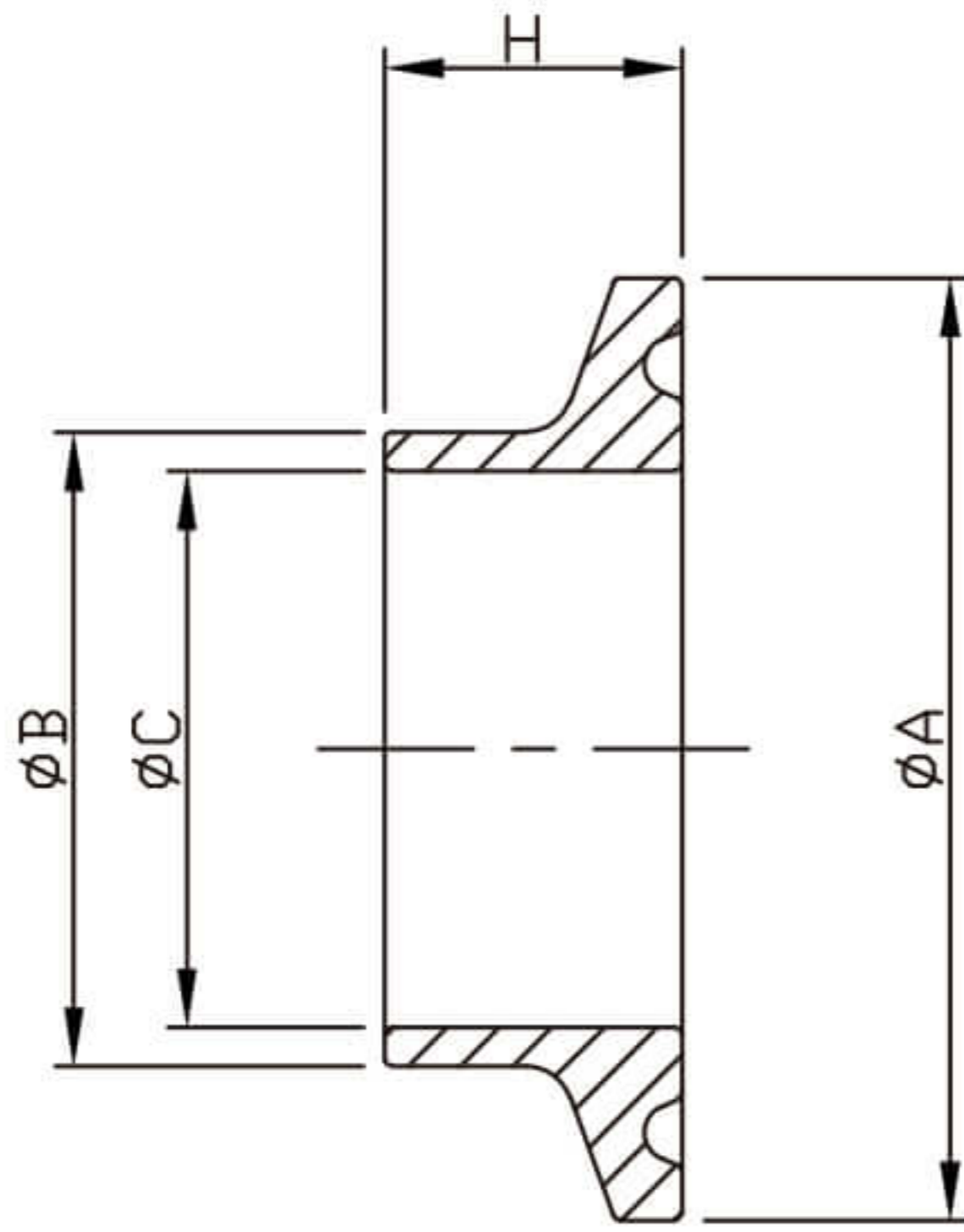
夾接管件
FERRULE



其他功能接頭
ADAPTER

3A-14WMP SHORT WELDING FERRULE

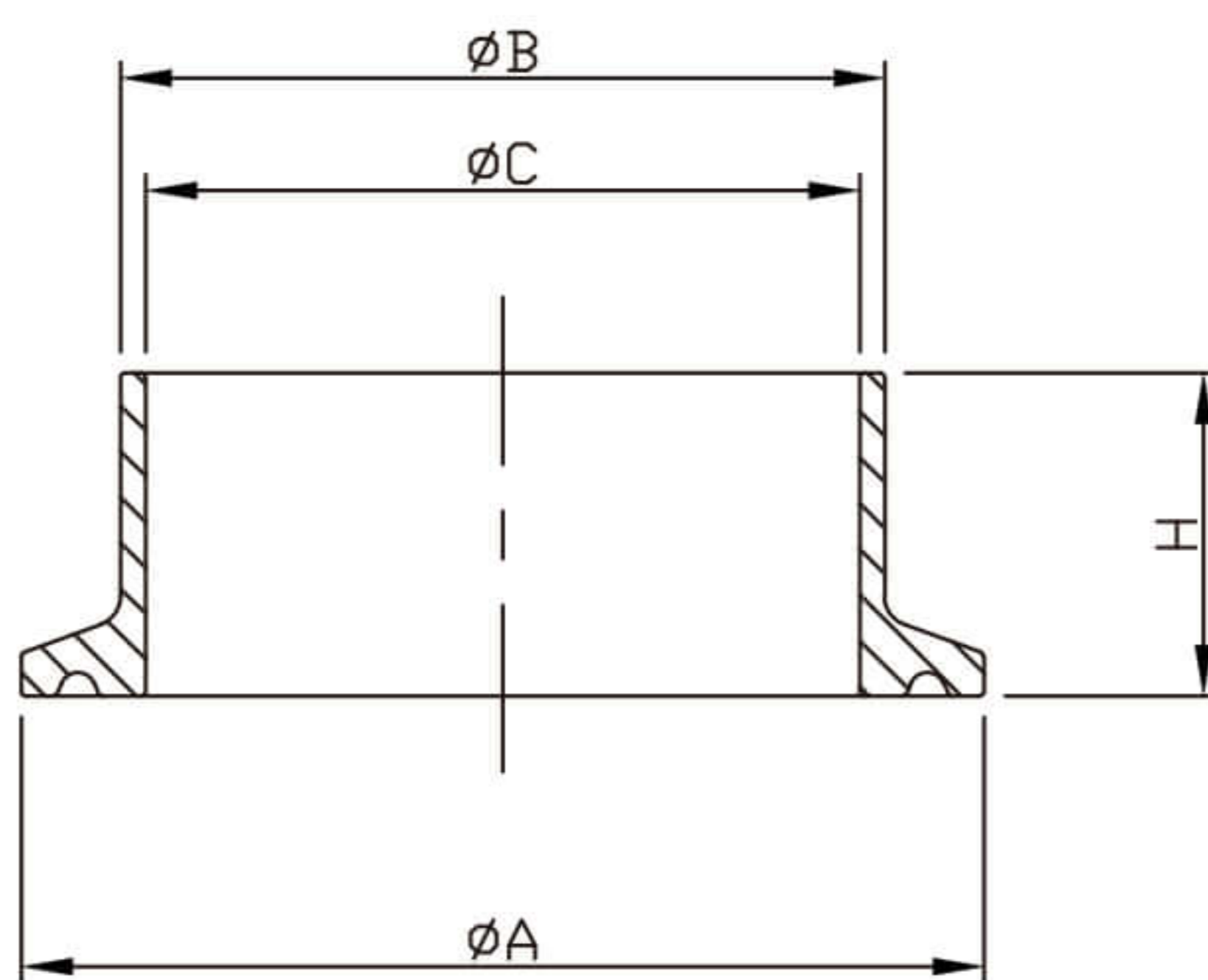
UNIT: mm



SIZE	ø A	ø B	ø C	H
1"	50.5	25.4	22.2	12.7
1.5"	50.5	38.1	34.8	12.7
2"	64.0	50.8	47.5	12.7
2.5"	77.5	63.5	60.2	12.7
3"	91.0	76.2	72.9	12.7
4"	119.0	101.6	97.4	15.9
6"	166.8	152.4	146.8	22.2
8"	217.7	203.2	197.6	23.8
10"	268.0	254.0	247.2	23.8
12"	319.0	304.8	298.0	23.8

3A-14MMP MEDIUM WELDING FERRULE

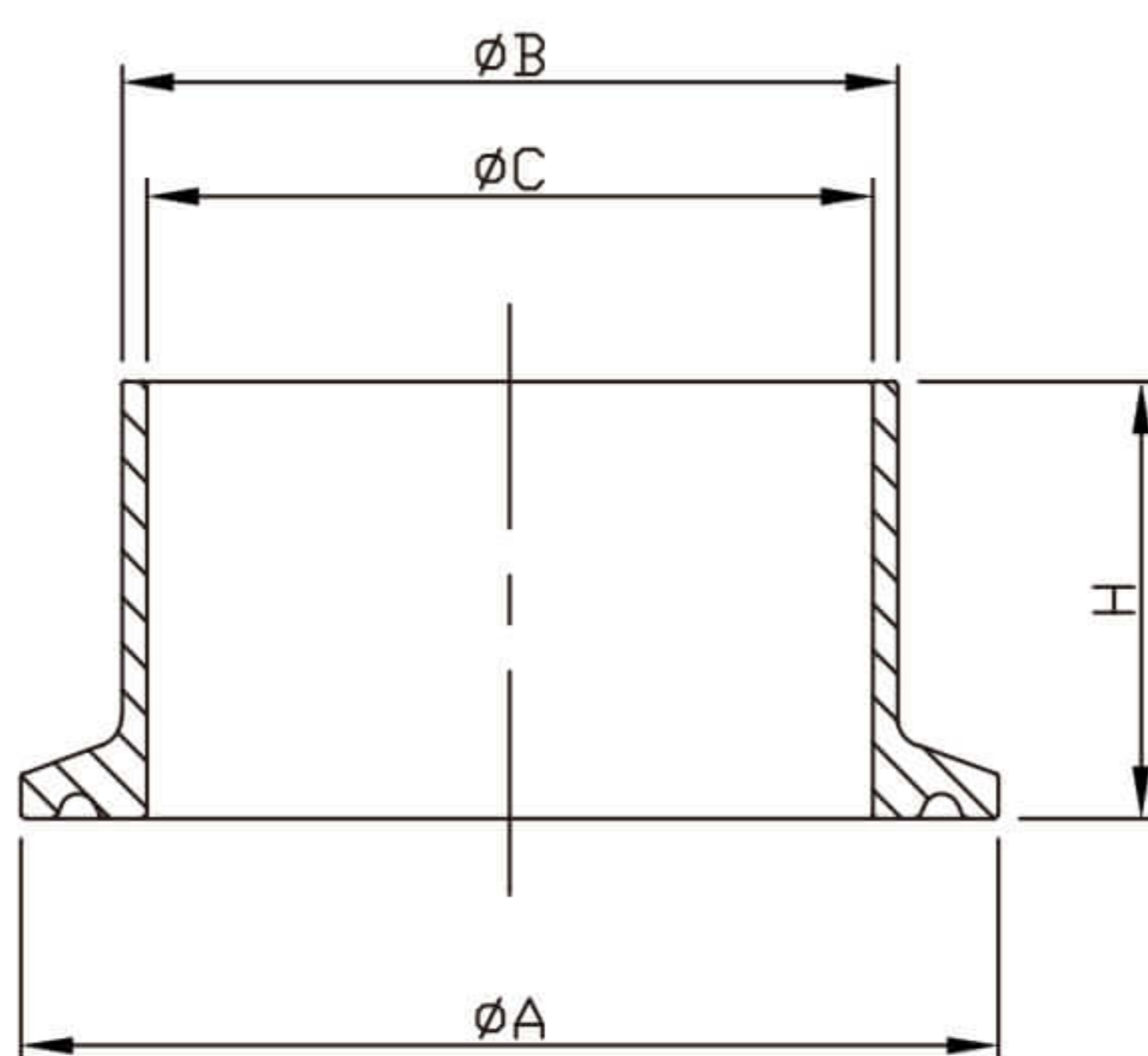
UNIT: mm



SIZE	ø A	ø B	ø C	H
1"	50.5	25.4	22.2	21.5
1.5"	50.5	38.1	34.8	21.5
2"	64.0	50.8	47.5	21.5
2.5"	77.5	63.5	60.2	21.5
3"	91.0	76.2	72.9	21.5
4"	119.0	101.6	97.4	21.5
6"	166.8	152.4	146.8	28.6
8"	217.7	203.2	197.6	28.6
10"	268.0	254.0	247.2	28.6
12"	319.0	304.8	298.0	28.6

3A-14AMP LONG WELDING FERRULE

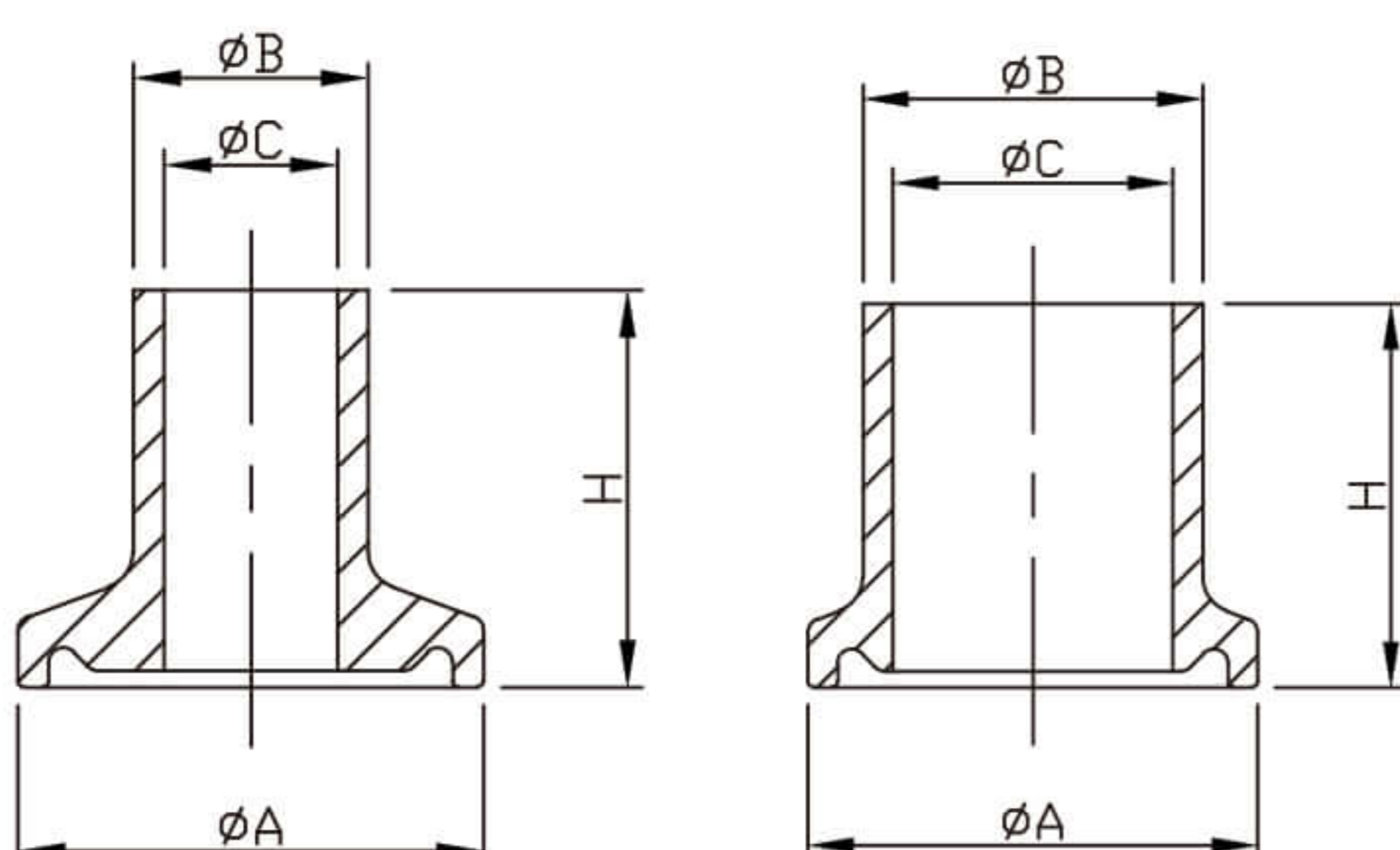
UNIT: mm



SIZE	ø A	ø B	ø C	H
1"	50.5	25.4	22.2	28.6
1.5"	50.5	38.1	34.8	28.6
2"	64.0	50.8	47.5	28.6
2.5"	77.5	63.5	60.2	28.6
3"	91.0	76.2	72.9	28.6
4"	119.0	101.6	97.4	28.6
6"	166.8	152.4	146.8	38.1
8"	217.7	203.2	197.6	38.1
10"	268.0	254.0	247.2	38.1
12"	319.0	304.8	298.0	38.1

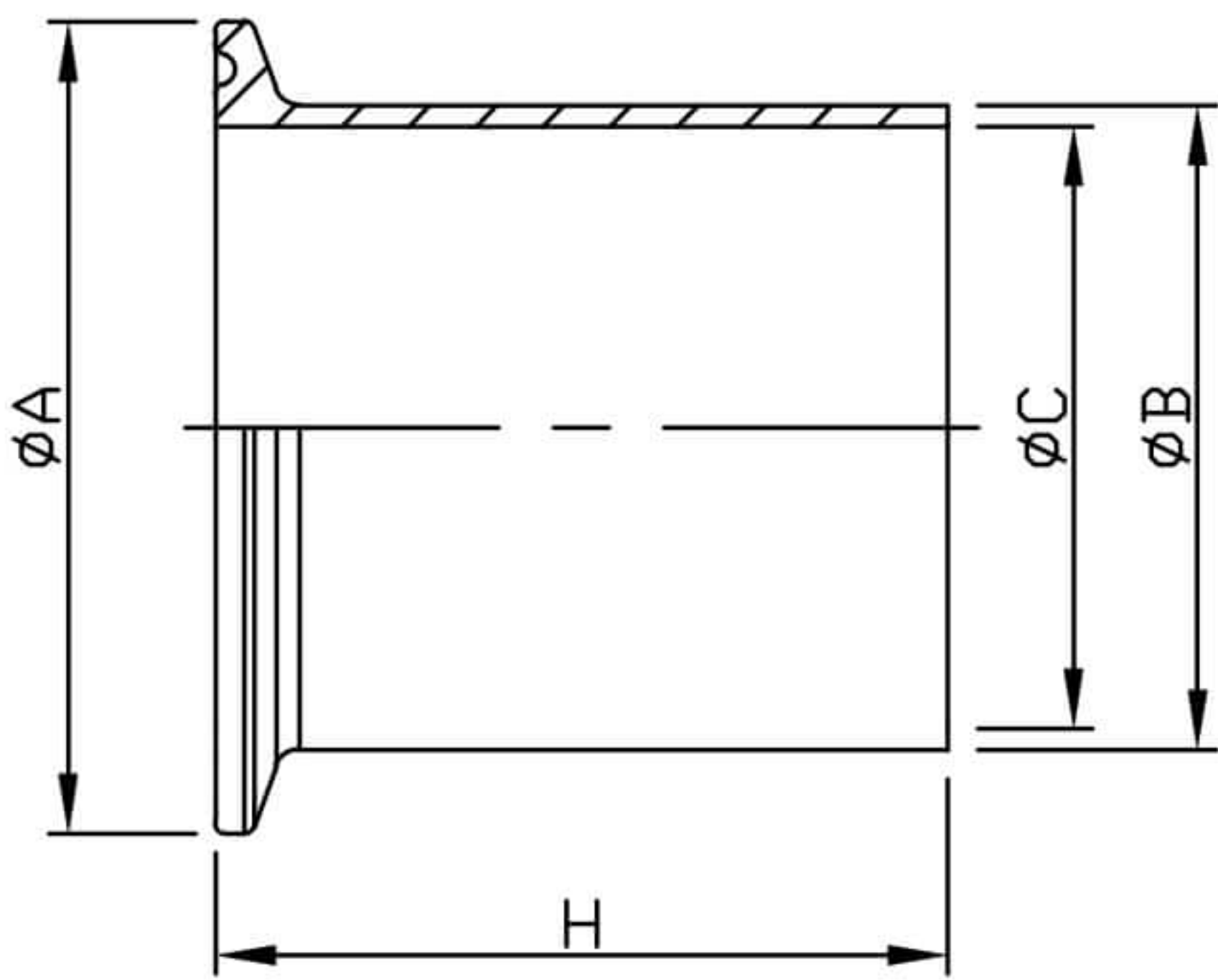
FERRULE-SMALL SIZE

UNIT: mm



				14WMP	14MMP	14AMP	14HMP
SIZE	ø A	ø B	ø C	H	H	H	H
1/2"	25.2	12.7	9.4	12.7	21.5	28.6	44.5
3/4"	25.2	19.05	15.7	12.7	21.5	28.6	44.5

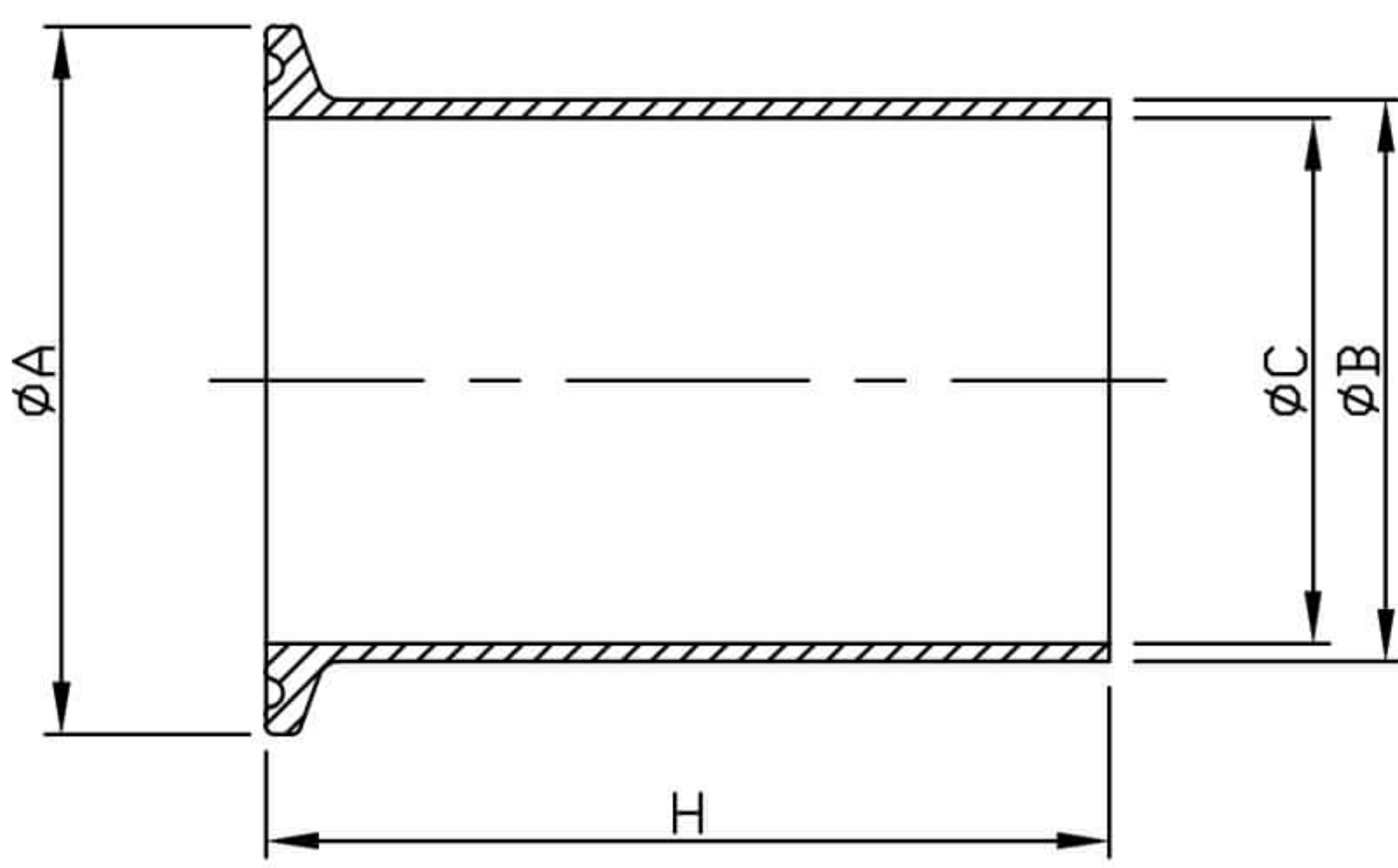
14HMP WELDING FERRULE



UNIT:mm

SIZE	ø A	ø B	ø C	H
1"	50.5	25.4	22.2	44.5
1.5"	50.5	38.1	34.8	44.5
2"	64.0	50.8	47.5	57.2
2.5"	77.5	63.5	60.2	57.2
3"	91.0	76.2	72.9	57.2
4"	119.0	101.6	97.4	57.2

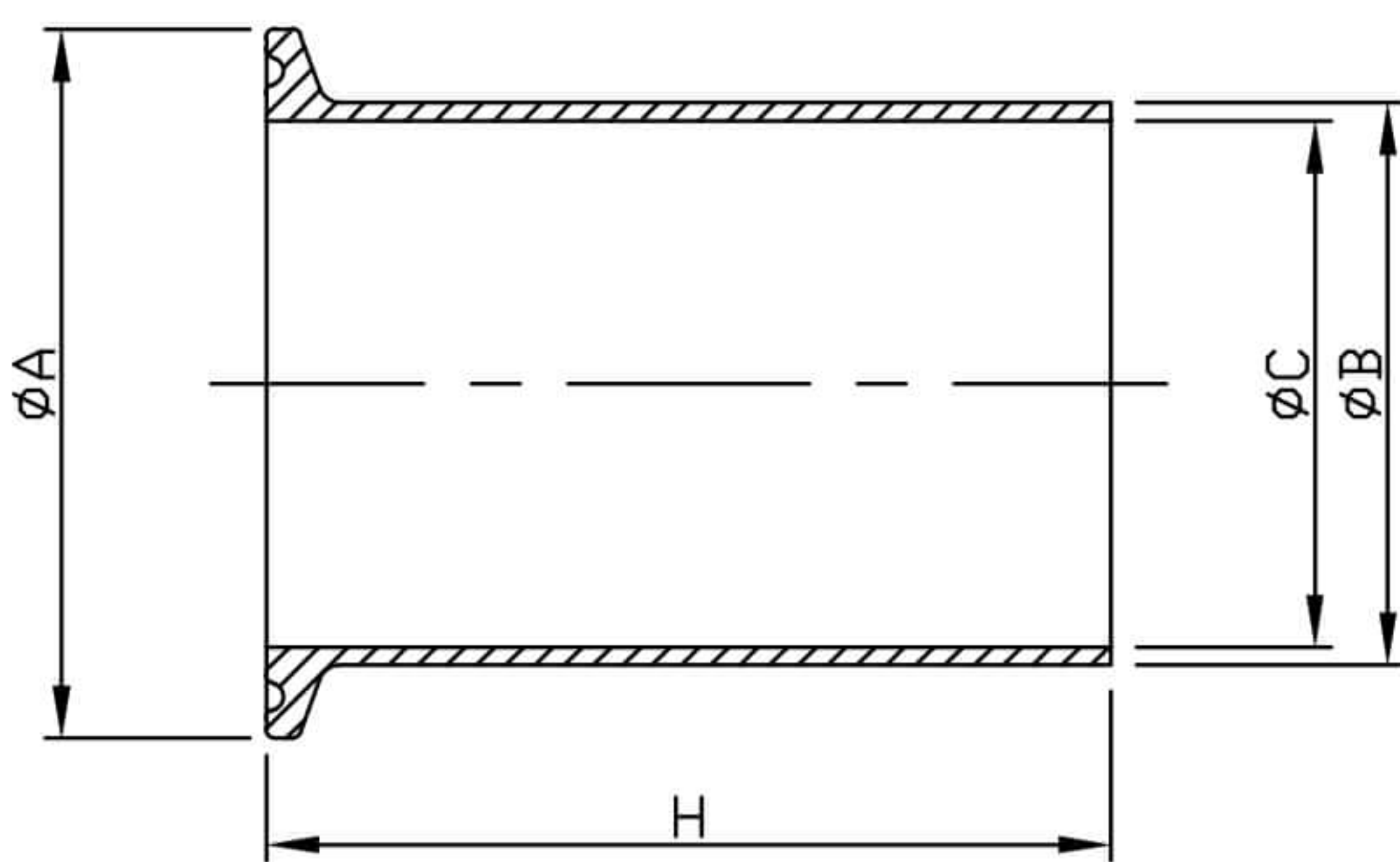
3A-14WLMP TANK WELDING FERRULE



UNIT:mm

SIZE	ø A	ø B	ø C	H
1"	50.5	25.4	22.2	76.2
1.5"	50.5	38.1	34.8	76.2
2"	64.0	50.8	47.5	76.2
2.5"	77.5	63.5	60.2	76.2
3"	91.0	76.2	72.9	101.6
4"	119.0	101.6	97.4	101.6
6"	166.8	152.4	146.8	152.4
8"	217.7	203.2	197.6	152.4
10"	268.0	254.0	247.2	152.4

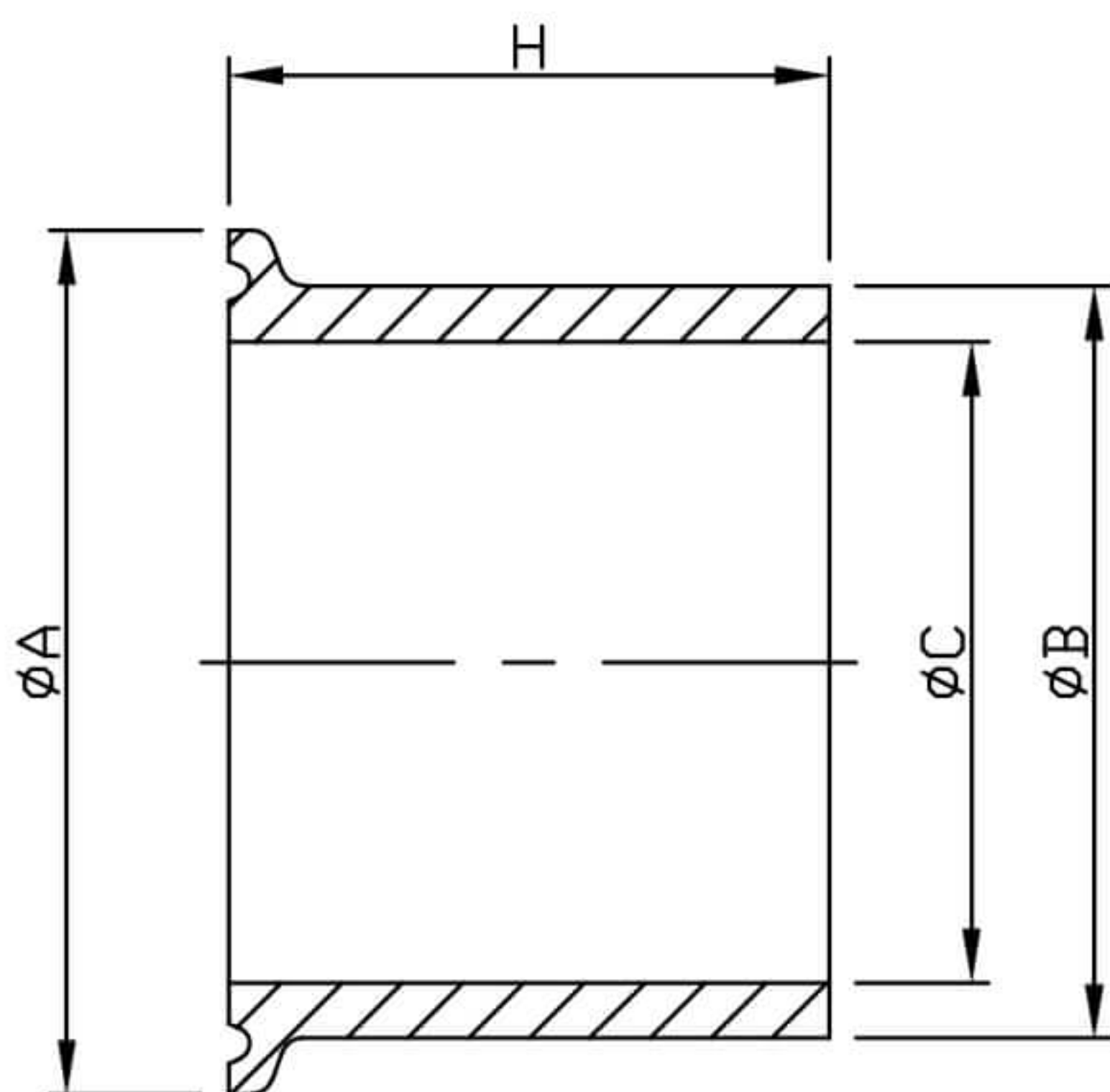
3A-14MPHT TYGON HOSE ADAPTER



UNIT:mm

SIZE	ø A	ø B	ø C	H
1"	50.5	25.4	22.2	114.3
1.5"	50.5	38.1	34.8	114.3
2"	64.0	50.8	47.5	114.3
2.5"	77.5	63.5	60.2	114.3
3"	91.0	76.2	72.9	114.3
4"	119.0	101.6	97.4	117.5

3A-14MPW TANK WELDING FERRULE

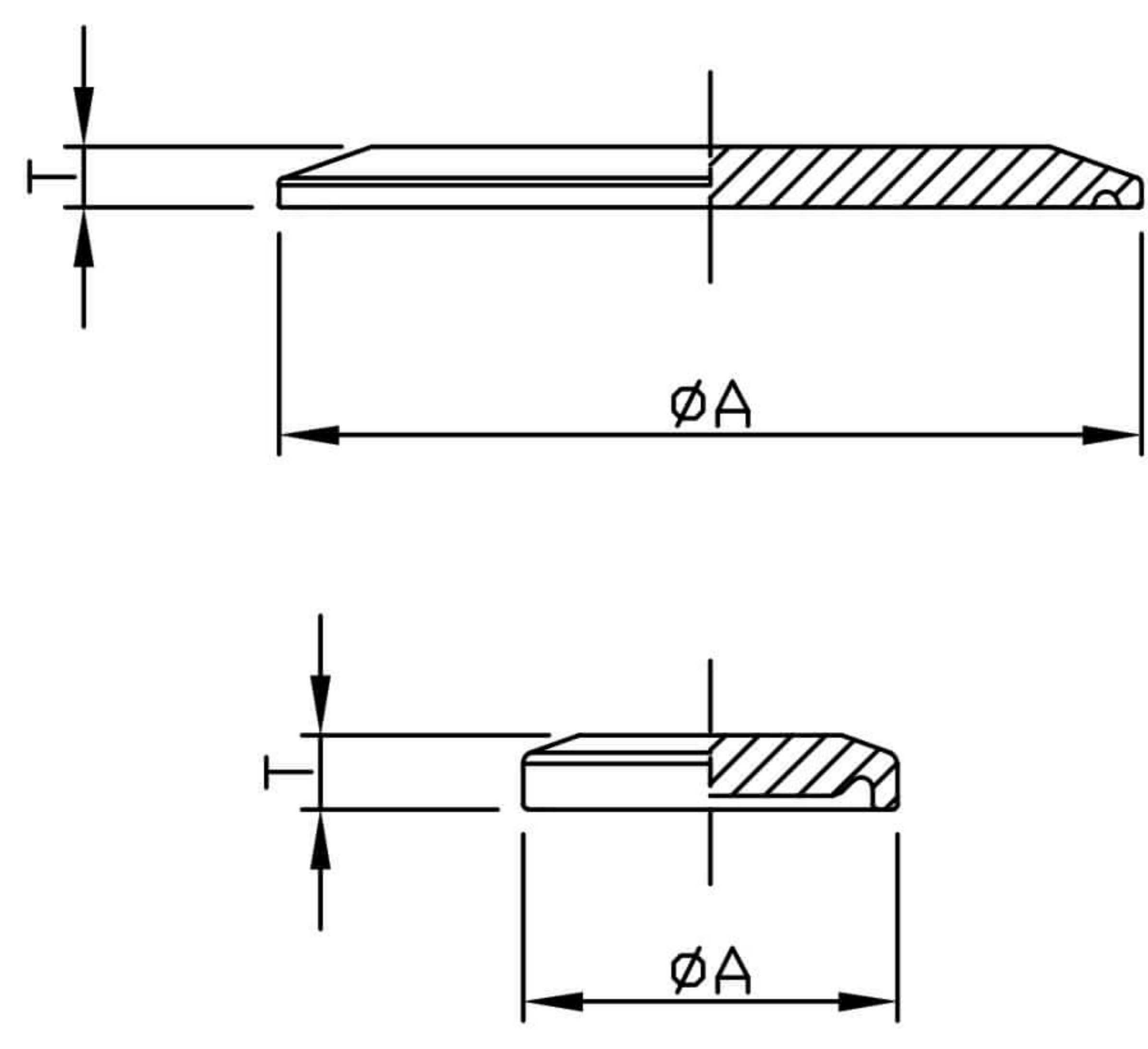


UNIT:mm

SIZE	ø A	ø B	ø C	H
1"	50.5	29.5	22.1	41.3
1.5"	50.5	42.6	34.8	41.3
2"	64.0	55.7	47.5	44.5
2.5"	77.5	68.8	60.2	44.5
3"	91.0	81.9	72.9	46.0
4"	119.0	108.1	97.4	54.0
6"	166.8	165.1	146.8	108.0

3A-16AMP SOLID END CAP

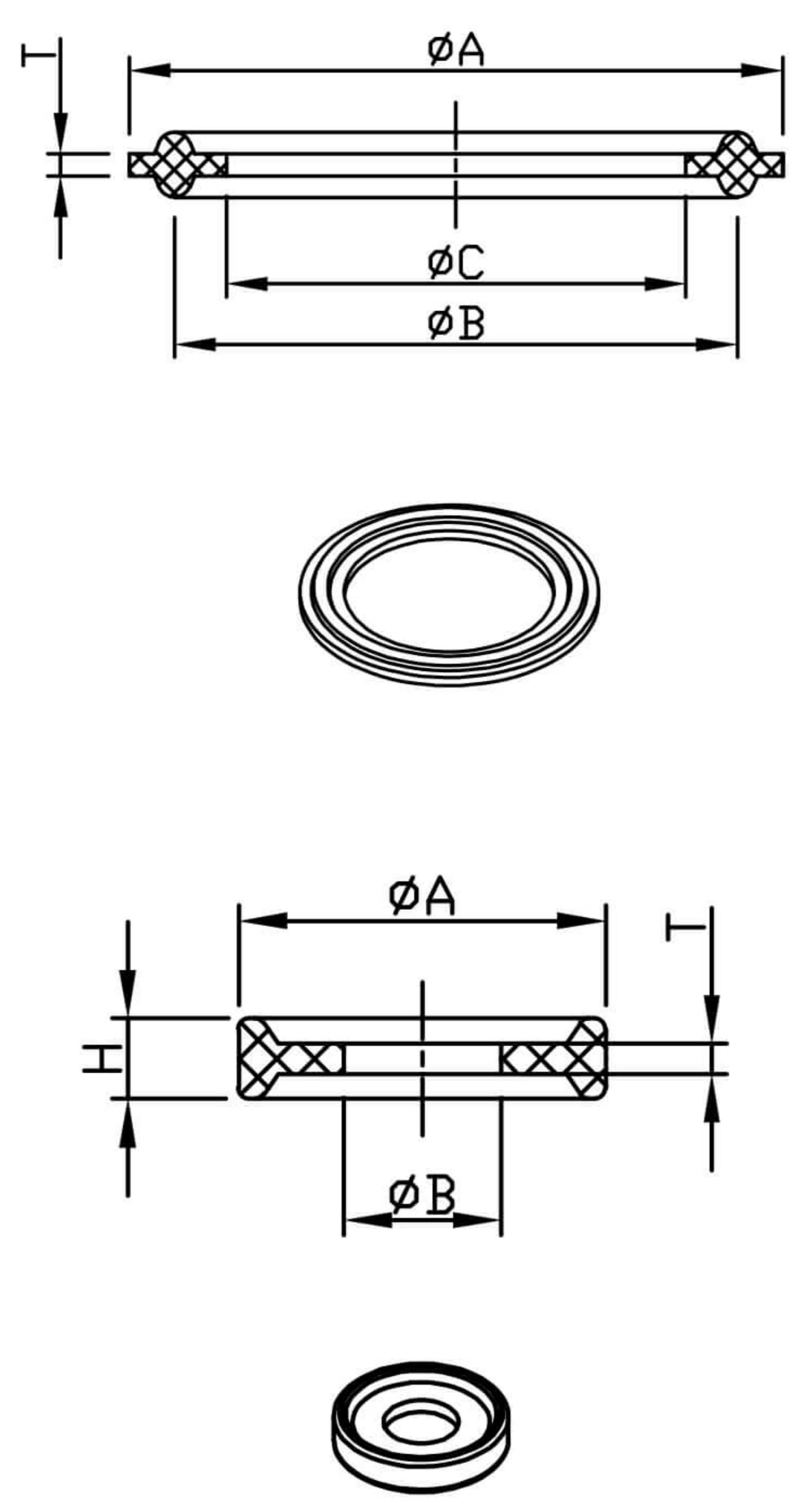
UNIT:mm



SIZE	ϕA	T
1/2"-3/4"	25.2	5.0
1"-1.5"	50.5	6.4
2"	64.0	6.4
2.5"	77.5	6.4
3"	91.0	6.4
4"	119.0	7.9
5"	144.5	10.0
6"	166.8	11.1
8"	217.7	11.1
10"	268.0	11.1
12"	319.0	11.1
DN80	106.0	6.4
DN100	130.0	7.9
DN125	155.0	11.1
DN150	183.0	11.1
DN200	233.5	11.1

SEAL FOR FERRULE PLAIN TYPE1

UNIT:mm



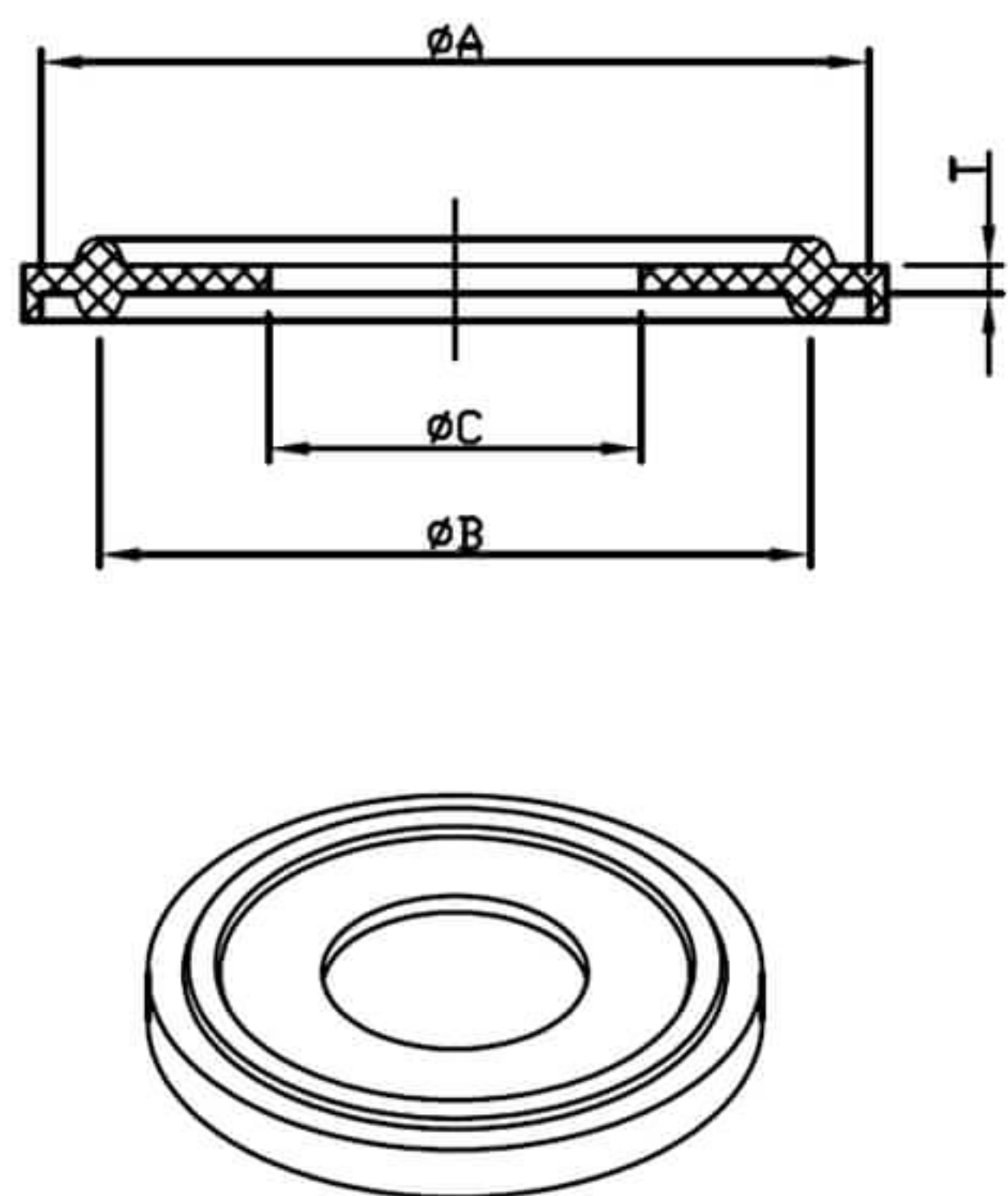
SIZE	ϕA	ϕB	ϕC	T
A37(PTFE)	34.0	27.5	18.1	1.7
1"	50.5	43.5	22.8	1.7
1.2"	50.5	43.5	28.5	1.7
1.5"	50.5	43.5	35.5	1.7
2"	64.0	56.5	48.2	1.7
2.5"	77.5	70.5	60.5	1.7
3"	91.0	83.5	73.2	1.7
DN80	106.0	97.0	85.4	1.7
4"	119.0	110.0	97.8	1.7
DN100	130.0	122.0	110.8	1.7
6"	166.8	156.4	147.6	1.7
8"	217.7	207.0	198.4	1.7
DN200	234.5	225.0	213.6	1.7
10"	268.0	258.0	248.5	1.7

UNIT:mm

SIZE	ϕA	ϕB	T	H
1/2"	21.85	9.4	1.8	4.8
3/4"	21.85	15.7	1.8	4.8

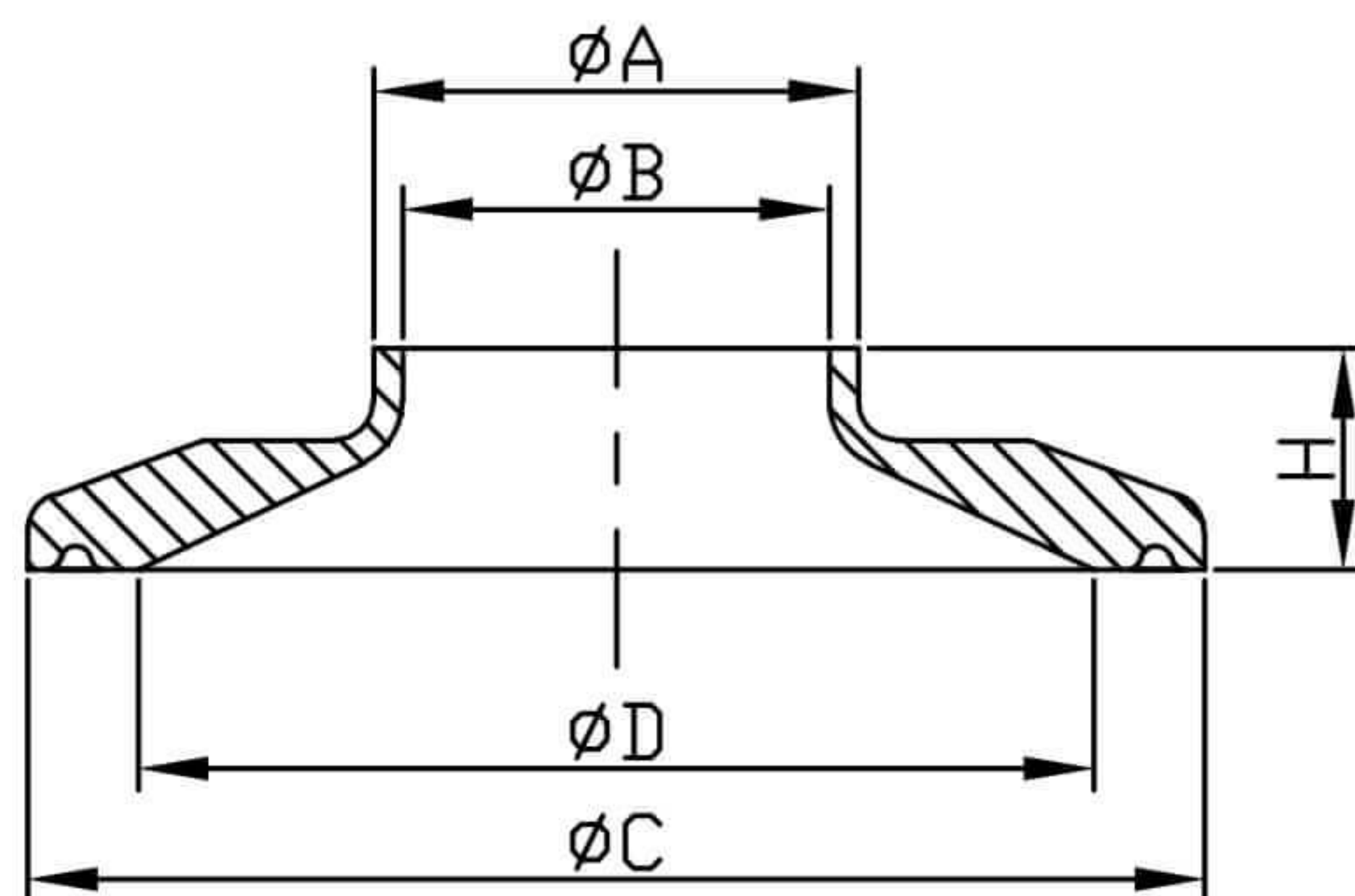
SEAL FOR FERRULE LIPPED TYPE2

UNIT:mm



SIZE	ϕA	ϕB	ϕC	T
1"	50.50	43.5	22.8	1.7
1.5"	50.50	43.5	35.5	1.7
2"	64.0	56.5	48.2	1.7
2.5"	77.5	70.5	60.5	1.7
3"	91.0	83.5	73.2	1.7
DN80	106.0	97.0	85.4	1.7
4"	119.0	110.0	97.8	1.7
5"	146.7	134.4	125.0	1.7
DN125	155.0	146.0	135.2	1.7
6"	166.8	156.4	147.6	1.7
DN150	183.0	174.0	163.2	1.7
8"	217.7	207.0	198.4	1.7
DN200	234.5	225.0	213.6	1.7
10"	268.0	258.0	248.5	1.7
12"	319.0	309	299.5	1.7

3A-14RWMP SHORT REDUCING FERRULE



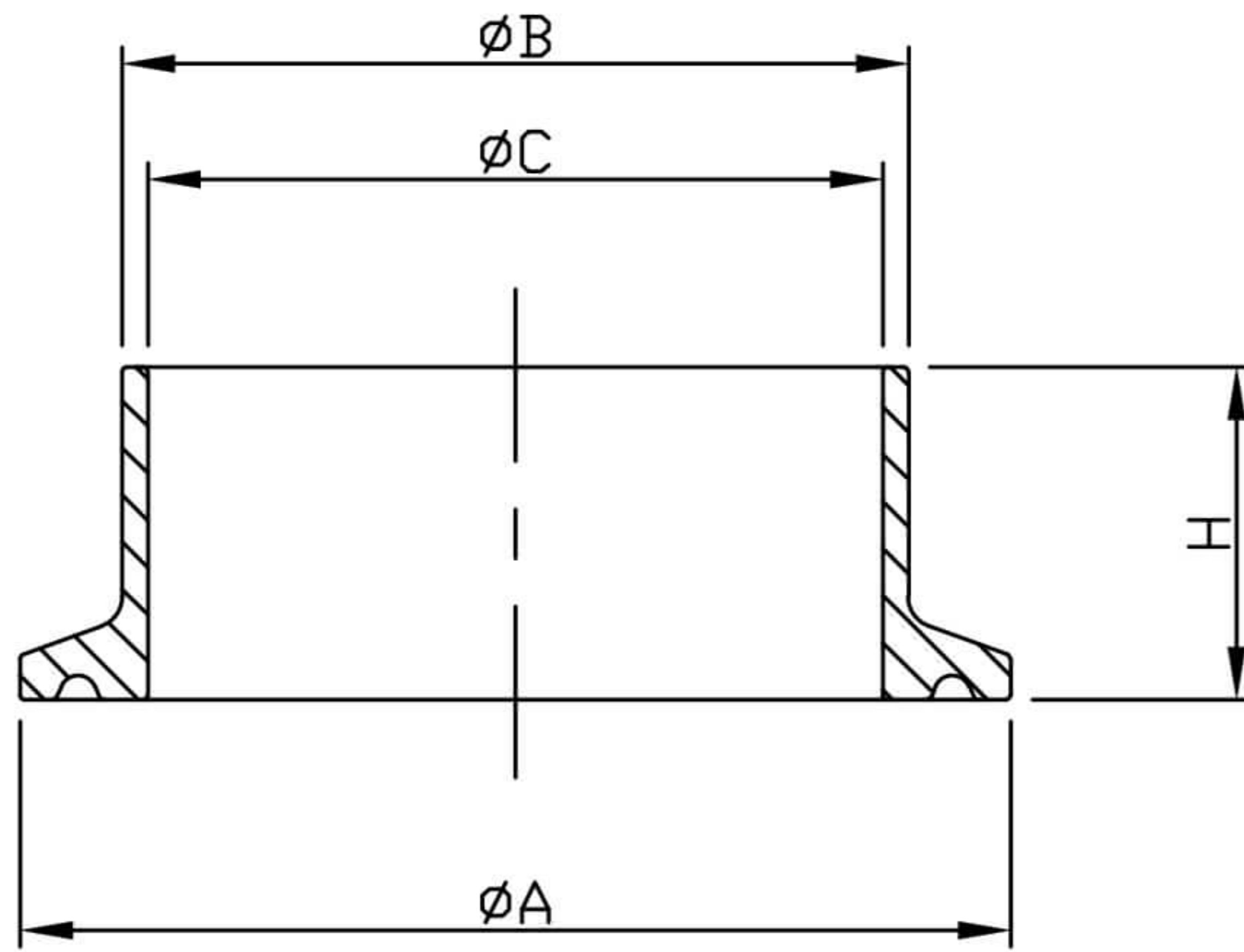
UNIT:mm

SIZE	ϕA	ϕB	H	ϕC	ϕD
1"x1.5"	12.7	9.4	12.7	50.5	22.2
1"x3/4"	19.05	15.7	12.7	50.5	22.2
1.5"x1.5"	12.7	9.4	12.7	50.5	34.8
1.5"x3/4"	19.05	15.7	12.7	50.5	34.8
1.5"x1"	25.4	22.1	12.7	50.5	34.8
2"x1"	25.4	22.2	12.7	64.0	47.5
2"x1.5"	38.1	34.8	12.7	64.0	47.5

UNIT:mm

SIZE	ϕA	ϕB	H	ϕC	ϕD
2.5"x1"	25.4	22.1	12.7	77.5	60.2
2.5"x1.5"	38.1	34.8	12.7	77.5	60.2
2.5"x2"	50.8	47.5	12.7	77.5	60.2
3"x1"	25.4	22.1	12.7	91.0	72.9
3"x1.5"	38.1	34.8	12.7	91.0	72.9
3"x2"	50.8	47.5	12.7	91.0	72.9
3"x2.5"	63.5	60.2	12.7	91.0	72.9
4"x1"	25.4	22.2	15.9	119.0	97.4
4"x1.5"	38.1	34.8	15.9	119.0	97.4
4"x2"	50.8	47.5	15.9	119.0	97.4
4"x2.5"	63.5	60.2	15.9	119.0	97.4
4"x3"	76.2	72.9	15.9	119.0	97.4

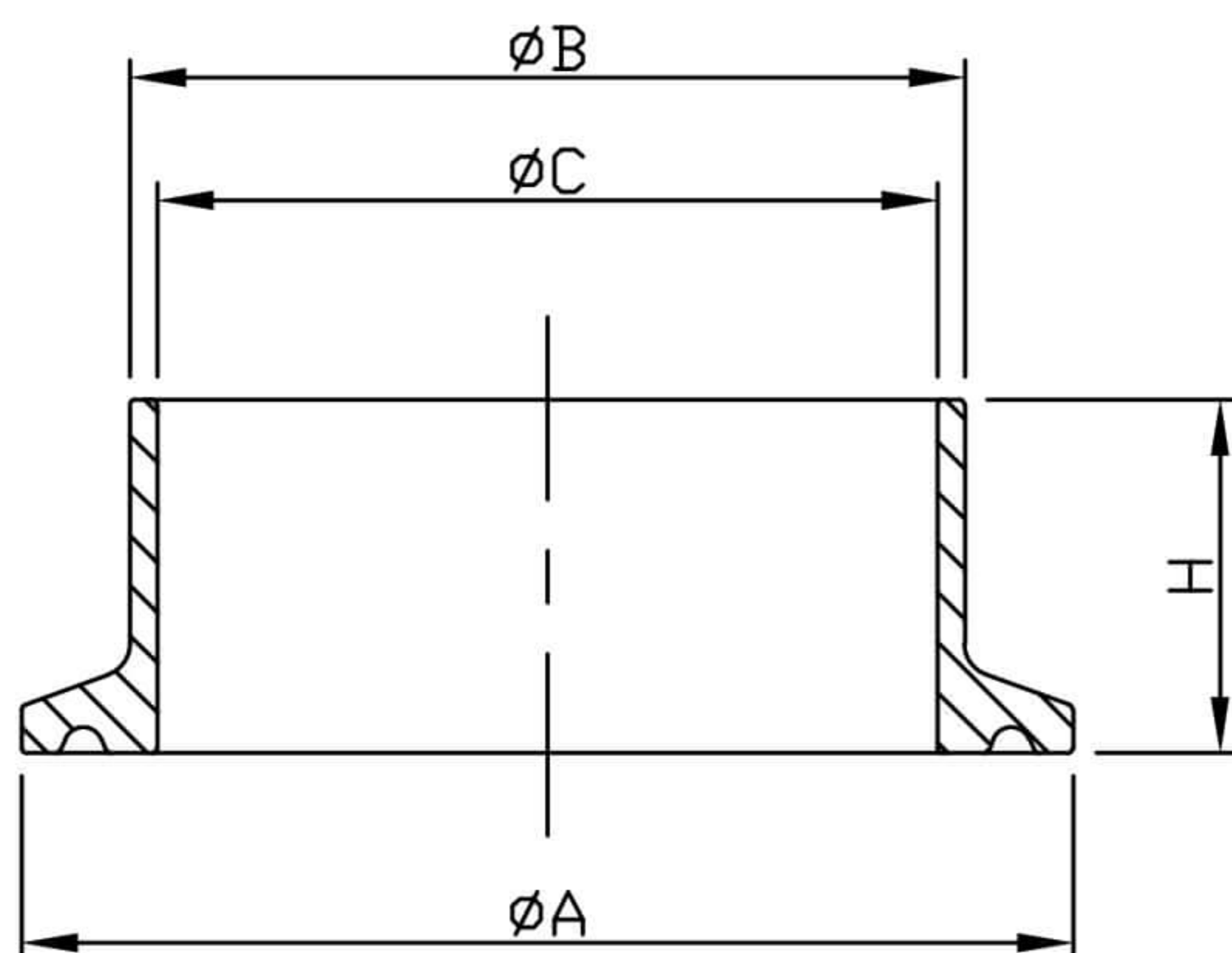
ISO-1127 CLAMP FERRULE



UNIT:mm

SIZE	$\varnothing A$	$\varnothing B$	$\varnothing C$	H
DN15	34.0	21.3	18.1	21.5
DN20	50.5	26.9	23.6	21.5
DN25	50.5	33.7	29.7	21.5
DN32	64.0	42.4	38.4	21.5
DN40	64.0	48.3	44.3	21.5
DN50	77.5	60.3	56.3	21.5
DN65	91.0	76.1	72.1	21.5
DN80	106.0	88.9	84.9	21.5
DN100	130.0	114.3	110.3	28.6
DN125	155.0	139.7	134.7	28.6
DN150	183.0	168.3	162.7	28.6
DN200	233.5	219.1	213.1	28.6

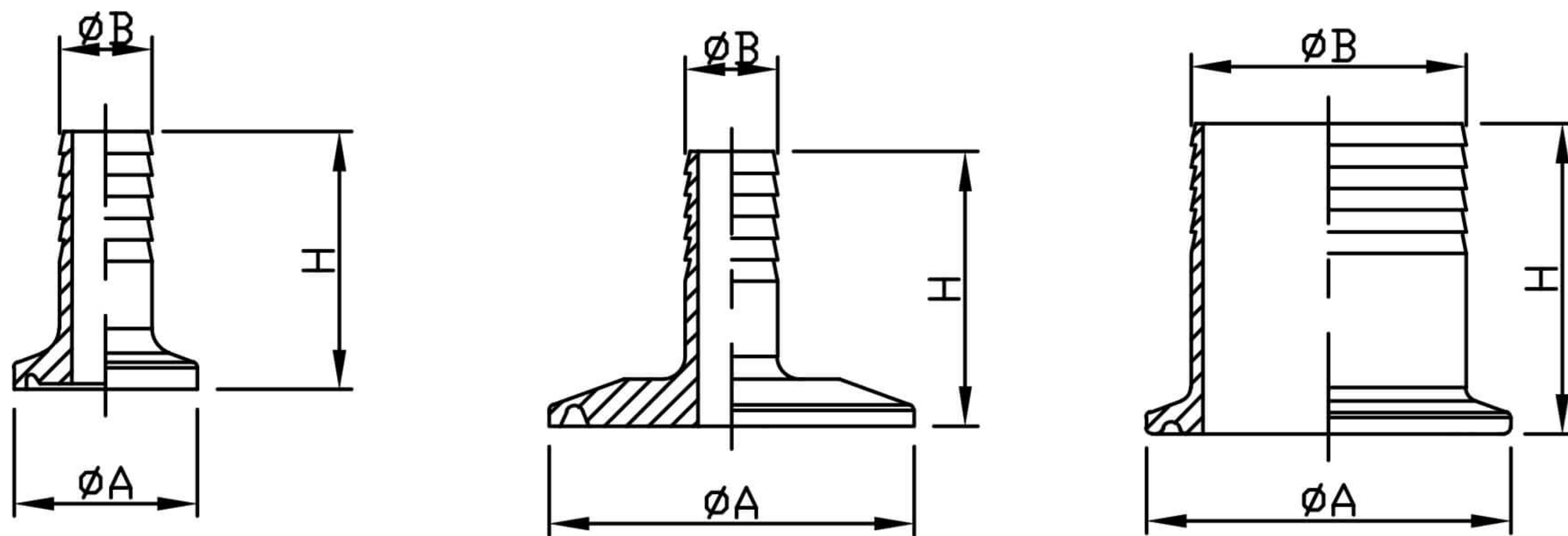
DIN-32676 CLAMP FERRULE



UNIT:mm

SIZE	$\varnothing A$	$\varnothing B$	$\varnothing C$	H
DN10	34.0	13.0	10.0	18.0
DN15	34.0	19.0	16.0	18.0
DN20	34.0	23.0	20.0	18.0
DN25	50.5	29.0	26.0	21.5
DN32	50.5	35.0	32.0	21.5
DN40	50.5	41.0	38.0	21.5
DN50	64.0	53.0	50.0	21.5
DN65	91.0	70.0	66.0	28.0
DN80	106.0	85.0	81.0	28.0
DN100	119.0	104.0	100.0	28.0
DN125	155.0	129.0	125.0	28.0
DN150	183.0	154.0	150.0	28.0
DN200	233.5	204.0	200.0	28.0

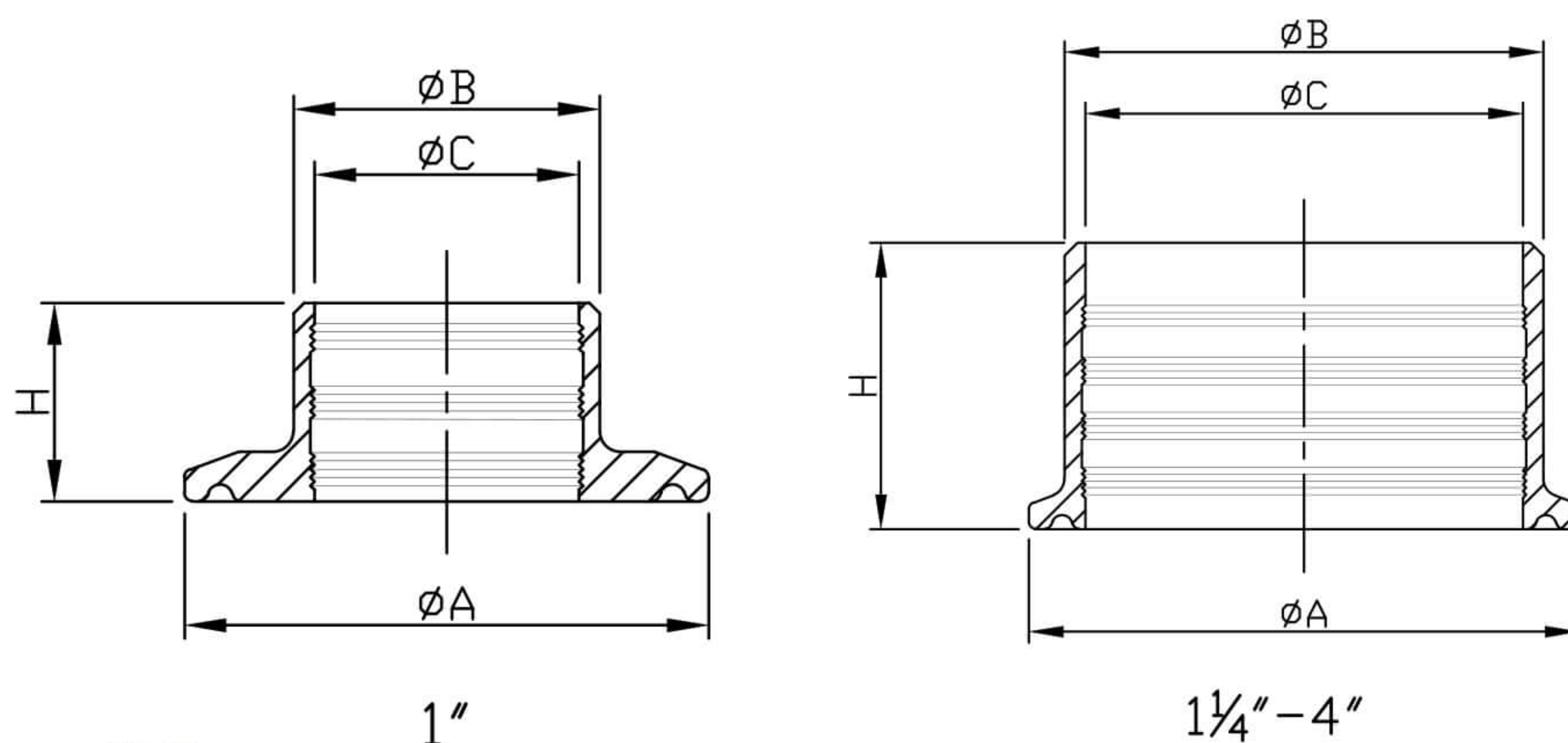
3A-14MPHR HOSE ADAPTER FERRULE



UNIT: mm

SIZE	ø A	ø B	H
ø 25x½"	25.4	12.7	38.1
ø 25x¾"	25.4	19.05	38.1
ø 50x½"	50.5	12.7	38.1
ø 50x¾"	50.5	19.05	38.1
1"	50.5	25.4	42.9
1.2"	50.5	31.8	42.9
1.5"	50.5	38.1	42.9
2"	64.0	50.8	58.7
2.5"	77.5	63.5	59.5
3"	91.0	76.2	78.6
4"	119.0	101.6	86.5

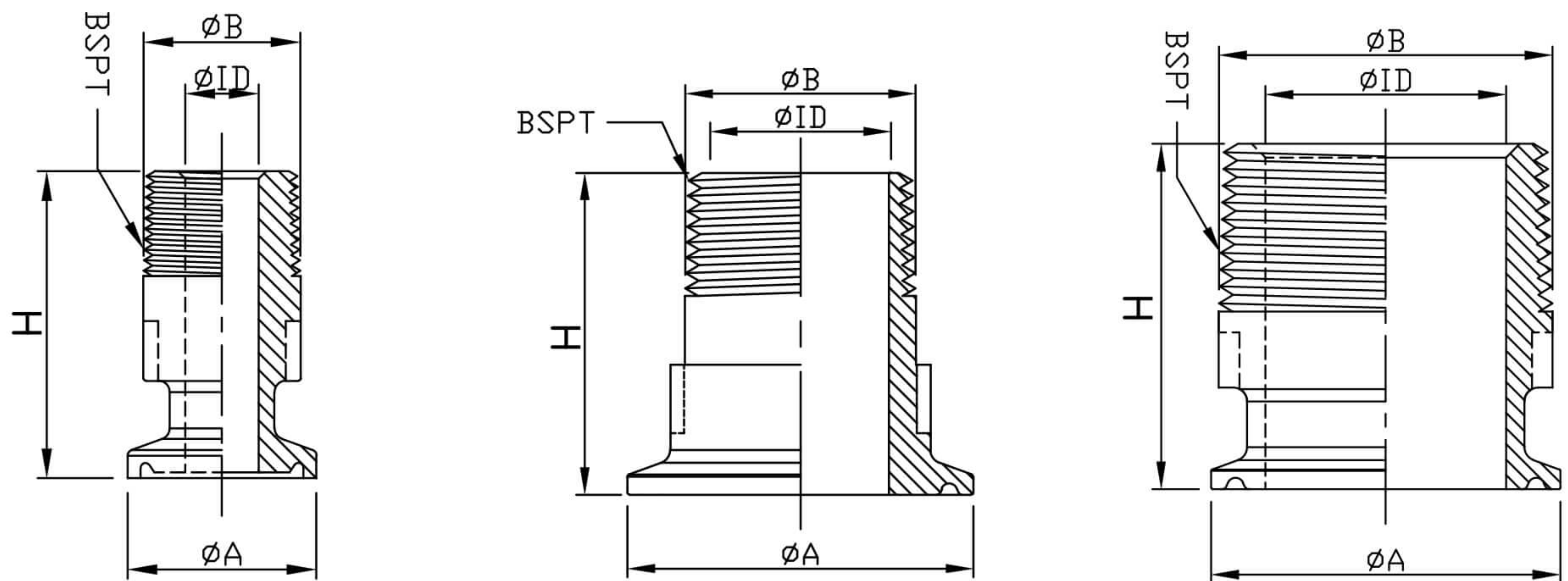
3A-14RMP RECESSLESS FERRULE



UNIT: mm

SIZE	ø A	ø B	ø C	H
1"	50.5	29.5	25.5	19.1
1.2"	50.5	36.3	31.9	28.6
1.5"	50.5	42.6	38.2	28.6
2"	64.0	55.7	50.9	33.3
2.5"	77.5	68.8	63.6	34.9
3"	91.0	81.9	76.3	36.5
4"	119.0	108.1	101.7	38.1

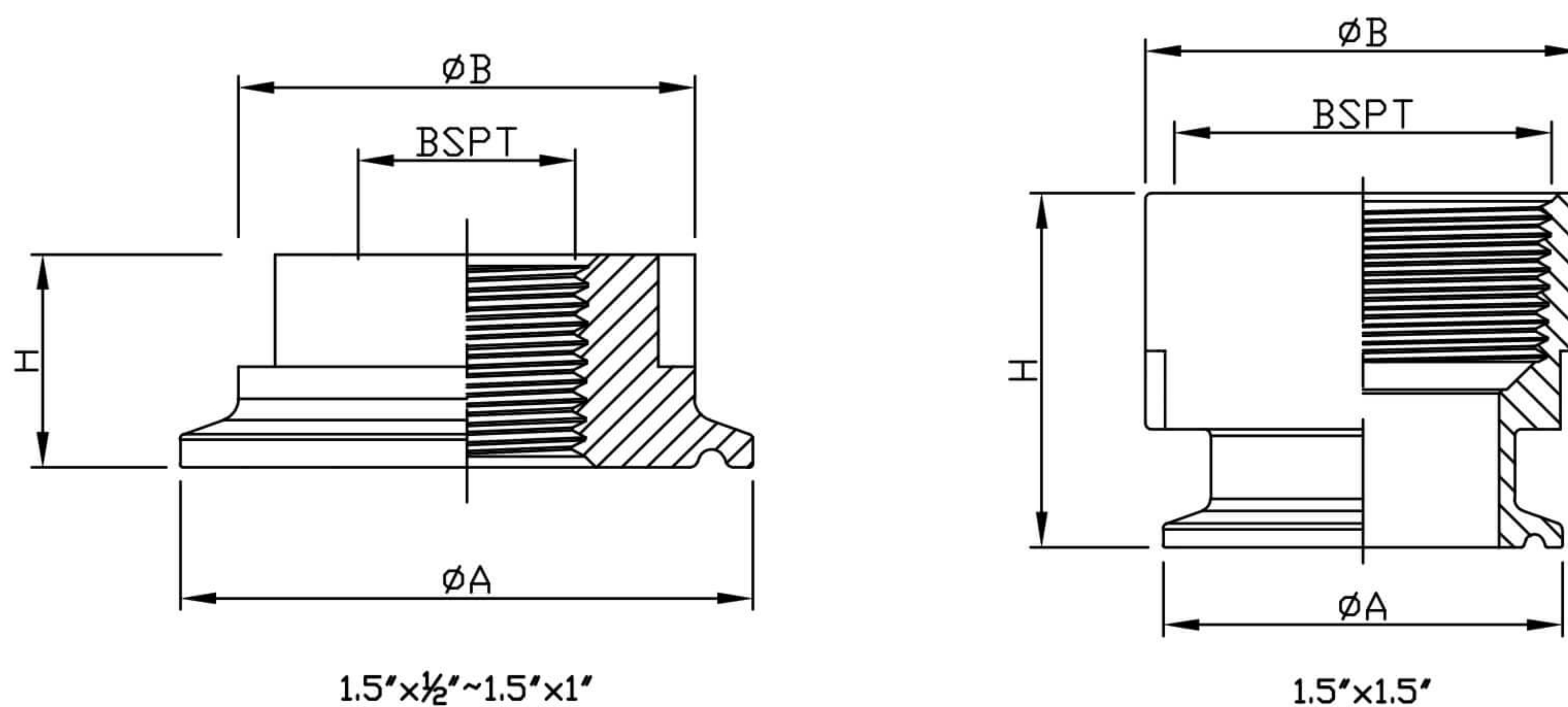
21MPT BSPT ADAPTER



UNIT: mm

SIZE	ϕA	ϕID	ϕB	H	BSPT
$\phi 25 \times \frac{1}{2}''$	25.2	9.8	21.5	41.0	$\frac{1}{2}''$
$\phi 50 \times \frac{1}{2}''$	50.5	15.8	21.5	43.0	$\frac{1}{2}''$
$\phi 50 \times \frac{3}{4}''$	50.5	20.8	27.5	43.0	$\frac{3}{4}''$
$\phi 50 \times 1''$	50.5	25.8	33.7	47.0	1''
$\phi 50 \times 1.2''$	50.5	29.5	42.2	50.0	1.2''
$\phi 50 \times 1.5''$	50.5	34.8	48.5	50.0	1.5''
$\phi 64 \times 1.5''$	64.0	39.0	48.5	50.0	1.5''
$\phi 64 \times 2''$	64.0	43.0-50.0	61.0	50.0	2''

22MPT FEMALE BSPT ADAPTER

1.5" x $\frac{1}{2}$ " ~ 1.5" x 1"

1.5" x 1.5"

UNIT: mm

SIZE	ϕA	ϕB	H	BSPT
1.5" x $\frac{3}{4}''$	50.5	40.6	19.2	$\frac{3}{4}'' \times 19T$
1.5" x $\frac{3}{8}''$	50.5	40.6	19.2	$\frac{3}{8}'' \times 19T$
1.5" x $\frac{1}{2}''$	50.5	40.6	19.2	$\frac{1}{2}'' \times 14T$
1.5" x $\frac{3}{4}''$	50.5	40.6	19.2	$\frac{3}{4}'' \times 14T$
1.5" x 1"	50.5	42.0	19.2	1" x 11T
1.5" x 1.5"	50.5	55.0	45.0	1.5" x 11T