

SMS

UNION FITTINGS

SMS unions are a Hygienic Fitting that features a captive seal design to provide a smooth, crevice-free internal bore. They consist of a round slotted nut, weld liner and weld male with an L style gasket available in a range of material types. The nut has round threads.

SMS fittings are the Swedish Metric Standards which is similar to the DIN 11851 union, widely used in France as well as in Europe.

1. Standards:

BS 4825 Part 4.

2. Applications:

For the Food, Beverage, and other Hygiene Industry

3. Materials:

Nut.....TP-304, 316
 Liner.....TP-304, 316, 316L
 Male part.....TP-304, 316, 316L
 Seal.....EPDM, Silicone, Buna-N, Viton.

4. Surface Finished:

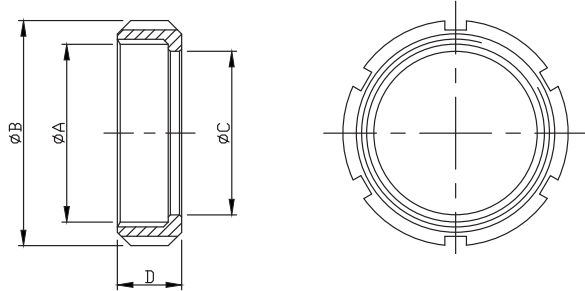
Ra Max 0.8um.

5. Size range:

1"----4"

SMS-13R (DM) ROUND SLOTTED NUT

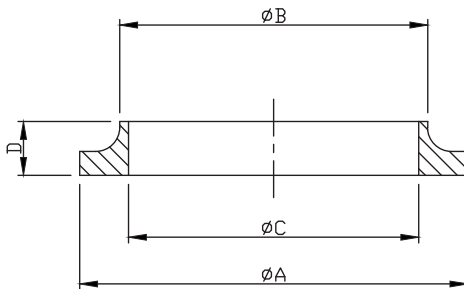
UNIT:mm



SIZE	ϕA	ϕB	ϕC	D
1"	RD40x1/6	51.0	32.3	20.0
1.2"	RD48x1/6	60.0	40.0	22.0
1.5"	RD60x1/6	74.0	48.5	25.0
2"	RD70x1/6	84.0	61.0	26.0
2.5"	RD85x1/6	100.0	74.0	30.0
3"	RD98x1/6	114.0	87.0	32.0
4"	RD132x1/6	154.0	117.0	45.0

SMS-14 (DM) WELDING LINER

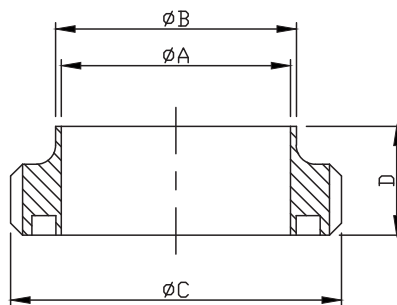
UNIT:mm



SIZE	ϕA	ϕB	ϕC	D
1"	35.5	25.6	22.6	8.0
1.5"	55.0	38.6	35.6	9.0
2"	65.0	51.6	48.6	9.0
2.5"	80.0	64.0	60.3	9.0
3"	93.0	76.6	72.9	10.0
4"	126.8	102.4	97.6	12.0

SMS-15 (DM) WELDING MALE PART

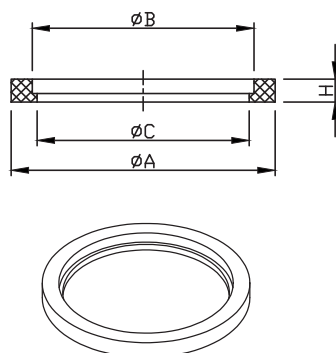
UNIT:mm



SIZE	ϕA	ϕB	ϕC	D
1"	22.6	25.6	RD40x1/6	15.0
1.5"	35.6	38.6	RD60x1/6	20.0
2"	48.6	51.6	RD70x1/6	20.0
2.5"	60.3	64.0	RD85x1/6	24.0
3"	72.9	76.6	RD98x1/6	24.0
4"	97.6	102.4	RD132x1/6	35.0

SEAL FOR SMS UNION (DM)

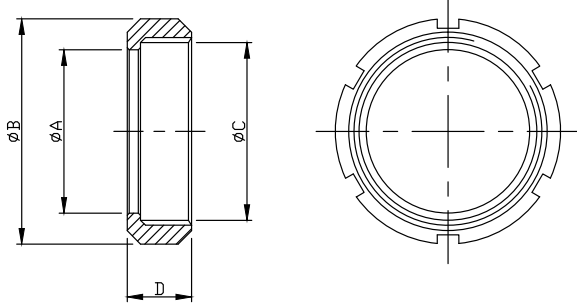
UNIT:mm



SIZE	ϕA	ϕB	ϕC	H
1"	31.8	25.1	22.8	5.3
1.5"	47.8	38.1	35.8	5.3
2"	60.8	51.1	48.8	5.3
2.5"	73.3	63.6	61.0	5.3
3"	85.8	76.1	73.4	5.3
4"	113.8	101.6	98.2	5.3

SMS-13R (BR) ROUND SLOTTED NUT

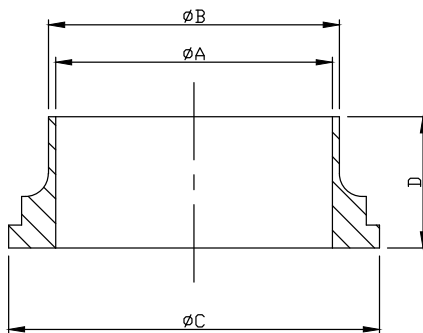
UNIT:mm



SIZE	$\varnothing A$	$\varnothing B$	$\varnothing C$	D
1"	32.3	51.0	RD40x1/6	19.0
1.2"	40.3	60.0	RD48x1/6	22.0
1.5"	48.3	74.0	RD60x1/6	23.0
2"	61.0	84.0	RD70x1/6	24.0
2.5"	74.0	100.0	RD85x1/6	28.0
3"	87.0	114.0	RD98x1/6	30.0
4"	117.0	153.7	RD132x1/6	34.0

SMS-14 (BR) WELDING LINER

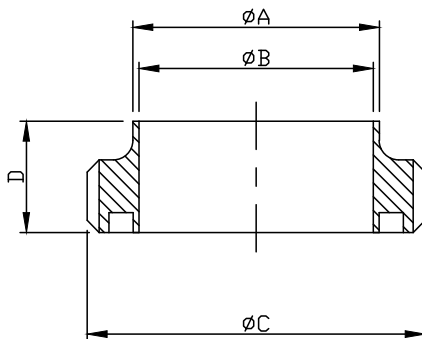
UNIT:mm



SIZE	$\varnothing A$	$\varnothing B$	$\varnothing C$	D
1"	22.4	25.4	35.5	15.5
1.5"	35.1	38.1	55.0	16.0
2"	47.8	50.8	65.0	17.0
2.5"	59.5	63.5	80.0	17.0
3"	72.2	76.2	93.0	19.0
4"	97.6	101.6	126.7	19.0

SMS-15 (BR) WELDING MALE PART

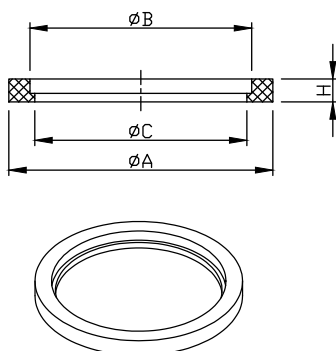
UNIT:mm



SIZE	$\varnothing A$	$\varnothing B$	$\varnothing C$	D
1"	25.4	22.4	RD40x1/6	19.0
1.5"	38.1	35.1	RD60x1/6	23.0
2"	50.8	47.8	RD70x1/6	23.0
2.5"	63.5	59.5	RD85x1/6	27.0
3"	76.2	72.2	RD98x1/6	27.0
4"	101.6	97.6	RD132x1/6	35.0

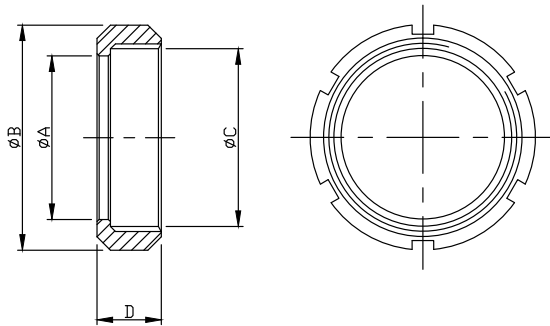
SEAL FOR SMS UNION (BR)

UNIT:mm



SIZE	$\varnothing A$	$\varnothing B$	$\varnothing C$	H
25	31.8	25.1	22.8	5.3
32	40.8	31.9	29.6	5.3
38	47.8	38.1	35.8	5.3
51	60.8	51.1	48.8	5.3
63.5	73.3	63.6	61.0	5.3
76.1	85.8	76.1	73.4	5.3
104	115.7	104.0	100.5	5.3

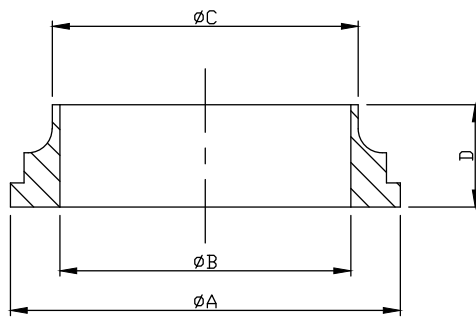
SMS-13 (FR) ROUND SLOTTED NUT



UNIT:mm

SIZE	Ø A	Ø B	Ø C	D
1"	32.5	51.0	RD40x1/6	19.0
1.2"	40.3	60.0	RD48x1/6	22.0
1.5"	48.5	74.0	RD60x1/6	23.0
2"	61.0	84.0	RD70x1/6	24.0
2.5"	74.0	100.0	RD85x1/6	28.0
3"	87.0	114.0	RD98x1/6	30.0
4"	113.0	138.0	RD125x1/4	31.0

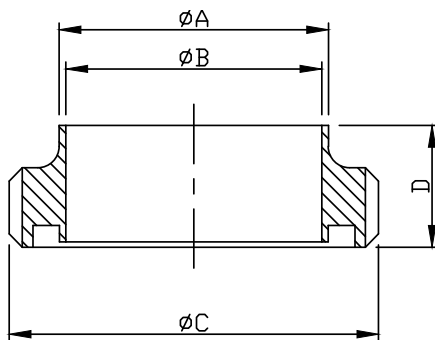
SMS-14 (FR) WELDING LINER



UNIT:mm

SIZE	Ø A	Ø B	Ø C	D
1"	35.5	22.5	25.0	15.5
1.2"	43.3	29.3	32.0	16.0
1.5"	55.0	35.5	38.0	16.0
2"	65.0	48.5	51.0	17.0
2.5"	80.0	60.5	63.5	17.0
3"	93.0	72.9	76.1	19.0
4"	118.0	97.6	101.6	19.0
104.0	118.0	100.0	104.0	19.0

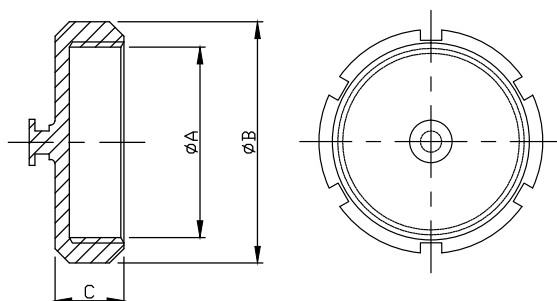
SMS-15 (FR) WELDING MALE PART



UNIT:mm

SIZE	Ø A	Ø B	Ø C	D
1"	25.0	22.5	RD40x1/6	19.0
1.2"	32.0	29.3	RD48x1/6	20.0
1.5"	38.0	35.5	RD60x1/6	23.0
2"	51.0	48.5	RD70x1/6	23.0
2.5"	63.5	60.5	RD85x1/6	27.0
3"	76.1	72.9	RD98x1/6	27.0
4"	101.6	97.6	RD125x1/4	30.0
104.0	104.0	100.0	RD125x1/4	30.0

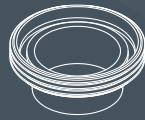
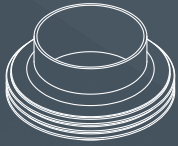
SMS-13AH BLANK NUT



UNIT:mm

SIZE	Ø A	Ø B	C
1"	RD40x1/6	51.0	19.0
1.5"	RD60x1/6	74.0	23.0
2"	RD70x1/6	84.0	24.0
2.5"	RD85x1/6	100.0	28.0
3"	RD98x1/6	114.0	30.0
4"	RD125x1/4	138.0	31.0

The DIN11851 union consists of a round slotted nut, weld male piece, a liner piece the nut slides over and seal.



DIN fitting are used extensively in Germany and through out Europe in many hygienic industries.



DIN UNION FITTINGS

Stainless steel DIN 11851 fittings create an easy connection for quick assembly or disassembly of secure, leak proof connections.

The union is available in both Imperial and metric sizes.

1. Standards: DIN 11851

2. Applications:

For Food, Chemical and Pharmaceutical Industry

3. Materials:

Nut.....TP-304, 316
 Liner.....TP-304, 316, 316L
 Male part.....TP-304, 316, 316L
 Seal.....EPDM, Silicone, Buna-N, Viton.

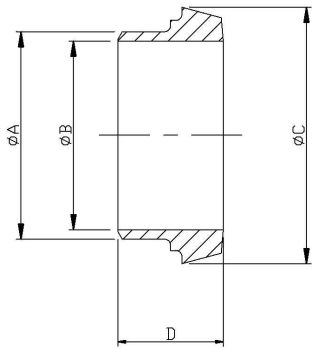
4. Surface Finished:

Ra Max 0.8um.

5. Size range:

Imperial 1"----4"
 Metric DIN10---DN150
 ISO DN15-DN100

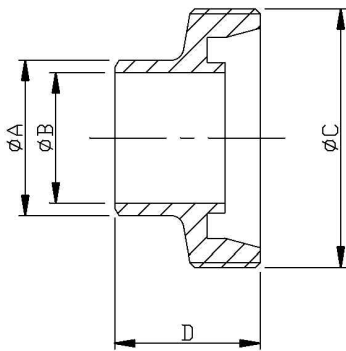
DIN-14 WELDING LINER



UNIT:mm

SIZE	ø A	ø B	ø C	D
DN10	15	10	22	17
DN15	21	16	28	17
DN20	25	20	36	18
DN25	31	26	44	22
DN32	37	32	50	25
DN40	43	38	56	26
DN50	55	50	68	28
DN65	72	66	86	32
DN80	87	81	100	37
DN100	106	100	120	44
DN125	132	125	149	34
DN150	157	150	175	37

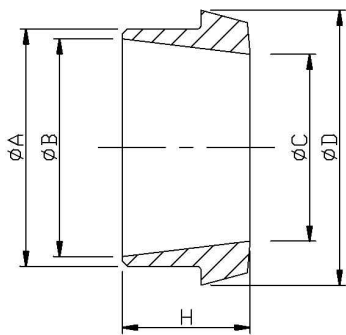
DIN-15 WELDING MALE PART



UNIT:mm

SIZE	ø A	ø B	ø C	D
DN10	15	10	RD28x1/8	21
DN15	21	16	RD34x1/8	21
DN20	25	20	RD44x1/6	24
DN25	31	26	RD52x1/6	29
DN32	37	32	RD58x1/6	32
DN40	43	38	RD65x1/6	33
DN50	55	50	RD78x1/6	35
DN65	72	66	RD95x1/6	40
DN80	87	81	RD110x1/4	45
DN100	106	100	RD130x1/4	54
DN125	132	125	RD160x1/4	46
DN150	157	150	RD190x1/4	50

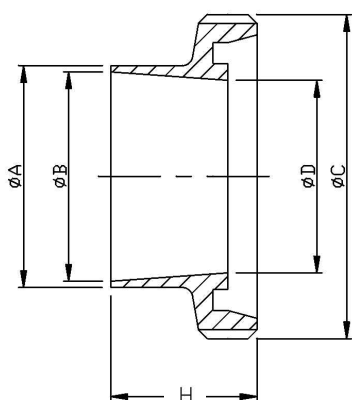
DIN-14-ISO WELDING LINER



UNIT:mm

SIZE	ø A	ø B	ø C	ø D	H
DN10	18.0	14.0	10	22.5	17
DN15	21.3	18.1	16	28.5	17
DN20	26.9	23.7	20	36.5	18
DN25	33.7	29.7	26	44.0	22
DN32	42.4	38.4	32	50.0	25
DN40	48.3	44.3	38	56.0	26
DN50	60.3	56.3	50	68.5	28
DN65	76.1	71.6	66	86.0	32
DN80	88.9	84.3	81	100.0	37
DN100	114.3	109.1	100	121.0	44

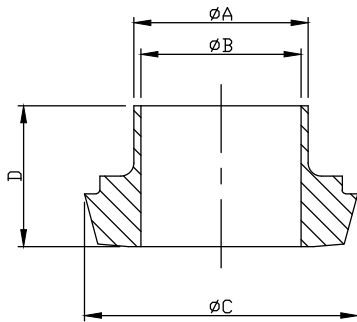
DIN-15-ISO WELDING MALE PART



UNIT:mm

SIZE	ø A	ø B	ø C	ø D	H
DN10	18.0	14.0	27.5-RD28x1/8	10.0	17
DN15	21.3	18.1	33.5-RD34x1/8	16.0	17
DN20	26.9	23.7	43.5-RD44x1/6	20.0	18
DN25	33.7	29.7	51.5-RD52x1/6	26.0	22
DN32	42.4	38.4	57.5-RD58x1/6	32.0	25
DN40	48.3	44.3	64.5-RD65x1/6	38.0	26
DN50	60.3	56.3	77.5-RD78x1/6	50.0	28
DN65	76.1	71.6	94.5-RD95x1/6	66.0	32
DN80	88.9	84.3	109.3-RD110x1/4	81.0	37
DN100	114.3	109.1	129.3-RD130x1/4	100.0	44

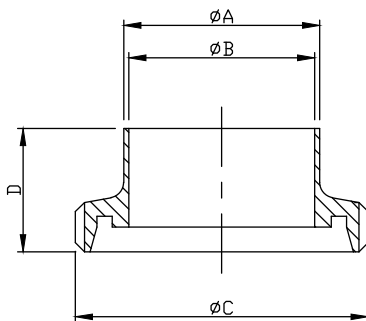
DIN-14 (EB) WELDING LINER



UNIT:mm

SIZE	ϕA	ϕB	ϕC	D
1"	25.4	22.2	44.0	22.0
1.2"	31.8	28.5	50.0	25.0
1.5"	38.1	34.9	56.0	26.0
2"	50.8	47.6	68.0	28.0
2.5"	63.5	60.3	86.0	32.0
3"	76.2	73.0	100.0	37.0
4"	101.6	97.6	121.0	44.0
5"	127.0	123.0	150.0	34.0
6"	152.4	148.4	176.0	37.0

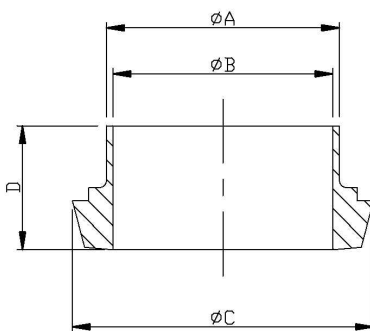
DIN-15 (EB) WELDING MALE PART



UNIT:mm

SIZE	ϕA	ϕB	ϕC	D
1"	25.4	22.2	RD52x1/6	29.0
1.2"	31.8	28.5	RD58x1/6	32.0
1.5"	38.1	34.9	RD65x1/6	33.0
2"	50.8	47.6	RD78x1/6	35.0
2.5"	63.5	60.3	RD95x1/6	40.0
3"	76.2	73.0	RD110x1/4	45.0
4"	101.6	97.6	RD130x1/4	54.0
5"	127.0	123.0	RD160x1/4	46.0
6"	152.4	148.4	RD190x1/4	50.0

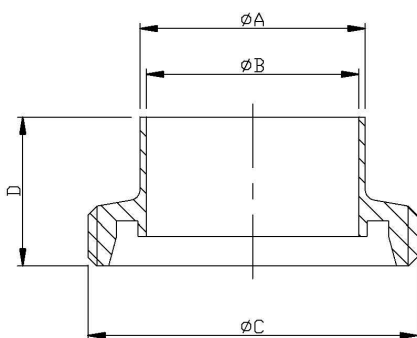
DIN-14 (NB) WELDING LINER



UNIT:mm

SIZE	ϕA	ϕB	ϕC	D
DN10	13	10	22	17
DN15	19	16	28	17
DN20	23	20	36	18
DN25	29	26	44	22
DN32	35	32	50	25
DN40	41	38	56	26
DN50	53	50	68.5	28
DN65	70	66	86	32
DN80	85	81	100	37
DN100	104	100	121	44
DN125	129	125	150	34
DN150	154	150	176	37

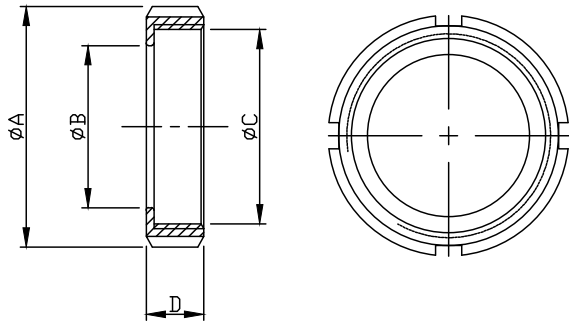
DIN-15 (NB) WELDING MALE PART



UNIT:mm

SIZE	ϕA	ϕB	ϕC	D
DN10	13	10	RD28x1/8	21
DN15	19	16	RD34x1/8	21
DN20	23	20	RD44x1/6	24
DN25	29	26	RD52x1/6	29
DN32	35	32	RD58x1/6	32
DN40	41	38	RD65x1/6	33
DN50	53	50	RD78x1/6	35
DN65	70	66	RD95x1/6	40
DN80	85	81	RD110x1/4	45
DN100	104	100	RD130x1/4	54
DN125	129	125	RD160x1/4	46
DN150	154	150	RD190x1/4	50

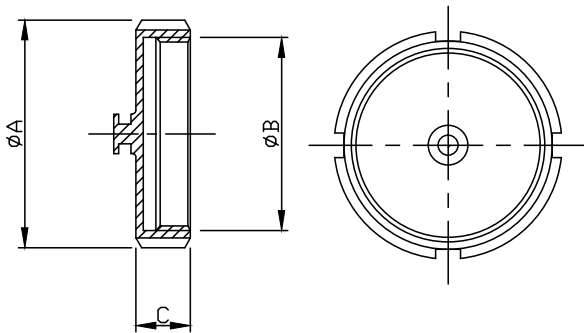
DIN-13R ROUND SLOTTED NUT



UNIT:mm

SIZE	ø A	ø B	ø C	D	SLOT
DN10	38.0	19.0	RD28x1/8	18.0	4
DN15	44.0	25.0	RD34x1/6	18.0	4
DN20	54.0	31.0	RD44x1/6	21.0	4
DN25	63.0	36.0	RD52x1/6	21.0	4
DN32	70.0	42.0	RD58x1/6	21.0	4
DN40	78.0	49.0	RD65x1/6	21.0	4
DN50	92.0	62.0	RD78x1/6	22.0	4
DN65	112.0	80.0	RD95x1/6	25.0	4 6
DN80	127.0	94.0	RD110x1/4	30.0	4 6
DN100	148.0	115.0	RD130x1/4	31.0	4 6
DN125	178.0	138.0	RD160x1/4	35.0	4 6
DN150	210.0	164.0	RD190x1/4	40.0	4 6

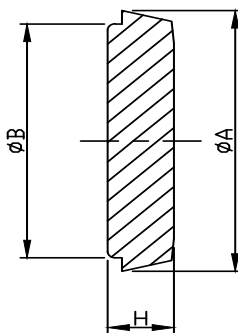
DIN-13AH BLANK ROUND NUT



UNIT:mm

SIZE	ø A	ø B	C	SLOT
DN10	38.0	RD28x1/8	18.0	4
DN15	44.0	RD34x1/8	18.0	4
DN20	54.0	RD44x1/6	21.0	4
DN25	63.0	RD52x1/6	21.0	4
DN32	70.0	RD58x1/6	21.0	4
DN40	78.0	RD65x1/6	21.0	4
DN50	92.0	RD78x1/6	22.0	4
DN65	112.0	RD95x1/6	25.0	4 6
DN80	127.0	RD110x1/4	30.0	4 6
DN100	148.0	RD130x1/4	31.0	4 6
DN125	178.0	RD160x1/4	35.0	4 6
DN150	210.0	RD190x1/4	40.0	4 6

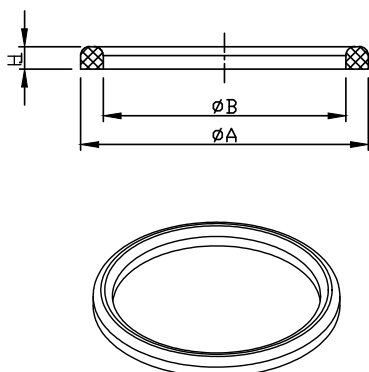
DIN-16A (14AH) BLANK LINER



UNIT:mm

SIZE	ø A	ø B	H
DN10	22.0	18.0	9.0
DN15	28.0	24.0	9.0
DN20	36.0	30.0	11.0
DN25	44.0	35.0	13.0
DN32	50.0	41.0	13.0
DN40	56.0	48.0	13.0
DN50	68.0	61.0	14.0
DN65	86.0	79.0	16.0
DN80	100.0	93.0	16.0
DN100	120.0	114.0	20.0
DN125	149.0	137.0	22.0
DN150	175.0	163.0	24.0

SEAL FOR DIN UNION



UNIT:mm

SIZE	ø A	ø B	H
DN10	20.0	12.0	4.5
DN15	26.0	18.0	4.5
DN20	33.0	23.0	4.5
DN25	40.0	30.0	5.0
DN32	46.0	36.0	5.0
DN40	52.0	42.0	5.0
DN50	64.0	54.0	5.0
DN65	81.0	71.0	5.0
DN75	88.0	78.0	5.0
DN80	95.0	85.0	5.0
DN100	114.0	104.0	6.0
DN125	142.0	130.0	7.0
DN150	167.0	155.0	7.0

Widely used in
South America.



DANSK

(DS) UNION FITTINGS

Basic DANSK(DS) Union composed of DS-13R, DS-14, DS--15 and seal. DANSK nut includes round nut and blank nut.

1.Standards: DS 722.

2.Applications:

For the Food, Beverage, and other Hygiene Industry

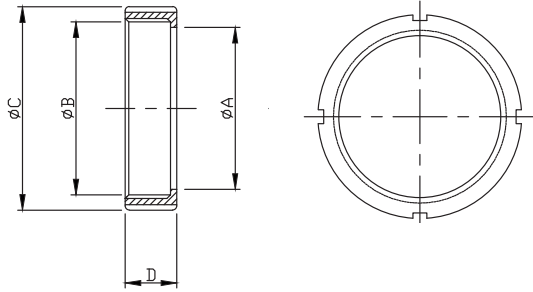
3.Materials:

Nut.....TP-304, 316
Liner.....TP-304, 316, 316L
Male part.....TP-304, 316, 316L
Seal.....EPDM, Silicone, Buna-N, Viton.

4.Surface Finished: Ra Max 0.8um.

5.Size range: 1"----4"

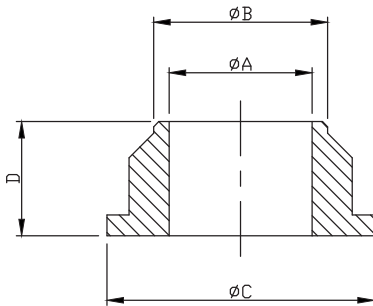
DANSK-13R (SA) ROUND SLOTTED NUT



UNIT:mm

SIZE	$\varnothing A$	$\varnothing B$	$\varnothing C$	D
1"	34.8	RD44x1/6	57.0	20.0
1.2"	42.3	RD52x1/6	65.0	20.0
1.5"	48.1	RD58x1/6	71.0	20.0
2"	62.0	RD72x1/6	86.0	22.0
2.5"	76.0	RD88x1/6	103.0	24.0
3"	88.3	RD100x1/6	115.0	25.0
4"	116.0	RD130x1/4	148.0	31.0
5"	140.0	RD160x1/4	178.0	32.0
6"	161.0	RD175x1/4	193.0	32.0

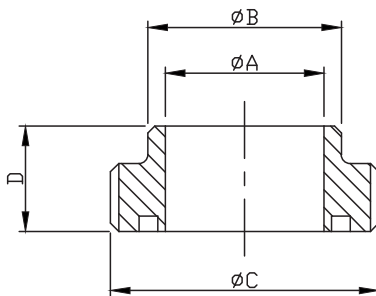
DANSK-14 (SA) WELDING LINER



UNIT:mm

SIZE	$\varnothing A$	$\varnothing B$	$\varnothing C$	D
1"	22.4	29.0	39.5	16.0
1.2"	28.5	35.0	47.5	16.0
1.5"	35.0	41.0	54.0	18.0
2"	47.0	54.0	67.5	20.0
2.5"	60.0	66.0	84.0	22.0
3"	72.2	80.0	95.5	24.0
4"	97.5	105.0	123.0	30.0
5"	123.0	132.0	153.5	30.0
6"	148.0	155.4	168.0	24.0

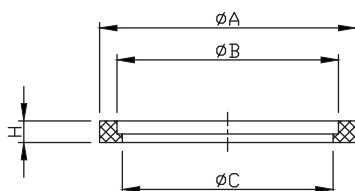
DANSK-15 (SA) WELDING MALE PART



UNIT:mm

SIZE	$\varnothing A$	$\varnothing B$	$\varnothing C$	D
1"	22.4	28.6	RD44x1/6	20.0
1.2"	28.5	35.0	RD52x1/6	20.0
1.5"	35.0	41.3	RD58x1/6	22.0
2"	47.0	55.0	RD72x1/6	24.0
2.5"	60.0	67.0	RD88x1/6	26.0
3"	72.2	80.0	RD100x1/6	28.0
4"	97.5	104.8	RD130x1/4	34.0
5"	123.0	135.0	RD160x1/4	36.0
6"	148.0	160.0	RD175x1/4	37.0

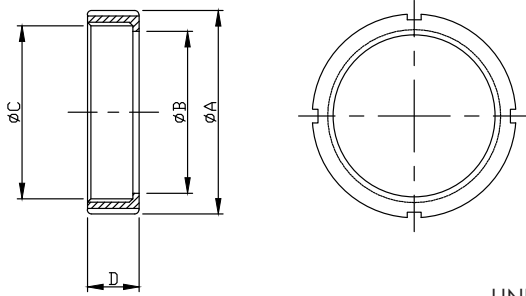
SEAL FOR DANSK UNION (SA)



UNIT:mm

SIZE	$\varnothing A$	$\varnothing B$	$\varnothing C$	H
1"	32.0	25.0	22.5	5.0
1.2"	41.0	31.8	29.0	5.0
1.5"	47.0	38.1	35.0	5.0
2"	59.0	50.8	47.5	5.0
2.5"	74.5	63.5	60.0	5.0
3"	88.0	76.2	72.5	5.0
4"	116.0	101.6	97.6	5.0

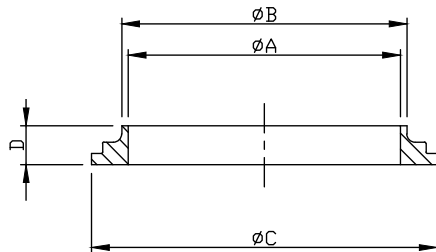
DANSK-13R (SK) ROUND SLOTTED NUT



UNIT:mm

SIZE	Ø A	Ø B	Ø C	D
1"	57.0	35.0	RD44x1/6	20.0
1.5"	71.0	48.5	RD58x1/6	20.0
2"	86.0	62.5	RD72x1/6	22.0
2.5"	103.0	76.5	RD88x1/6	24.0
3"	115.0	88.5	RD100x1/6	25.0
4"	147.0	117.0	RD130x1/6	28.0

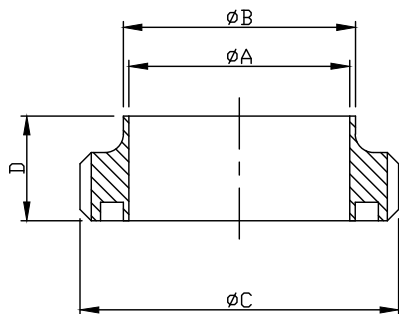
DANSK-14 (SK) WELDING LINER



UNIT:mm

SIZE	Ø A	Ø B	Ø C	D
1"	22.5	25.6	39.5	11.0
1.5	35.5	38.5	53.5	11.0
2"	48.6	51.5	67.5	11.0
2.5"	60.3	63.9	83.5	12.0
3"	72.9	76.6	95.7	12.0
4"	97.6	102.3	124.0	12.0

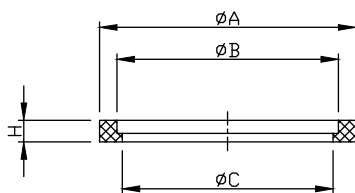
DANSK-15 (SK) WELDING MALE PART



UNIT:mm

SIZE	Ø A	Ø B	Ø C	D
1"	22.5	25.6	RD44x1/6	18.5
1.5"	35.5	38.5	RD58x1/6	20.0
2"	48.6	51.5	RD72x1/6	20.0
2.5"	60.3	63.9	RD88x1/6	24.0
3"	72.9	76.6	RD100x1/6	24.0
4"	97.6	102.3	RD130x1/6	24.0

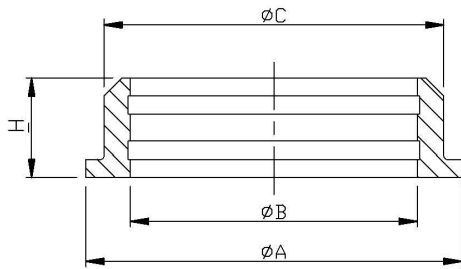
SEAL FOR DANSK UNION (SK)



UNIT:mm

SIZE	Ø A	Ø B	Ø C	H
1"	32.0	25.0	22.5	5.0
1.5"	47.0	38.0	35.5	5.0
2"	59.0	51.0	48.5	5.0
2.5"	74.5	63.5	60.3	5.0
3"	88.0	76.0	72.9	5.0
4"	112.5	102.0	97.6	5.0

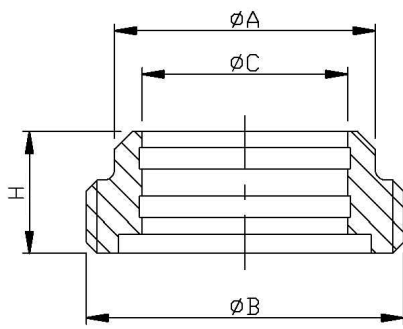
DANSK-14R EXPANDING LINER



UNIT:mm

SIZE	ø A	ø B	ø C	H
1"	39.5	25.2	33.8	16
1.5"	53.5	38.2	47.5	18
2"	67.5	51	61.5	20
2.5"	83.5	63.7	75.5	22
3"	95.5	76.4	87.5	24
4"	124	102	115	29

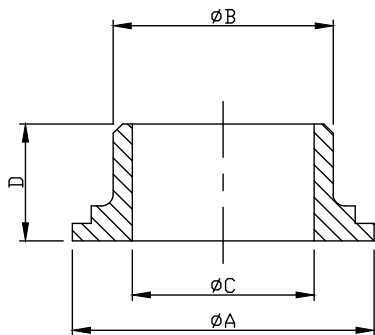
DANSK-15R EXPANDING MALE PART



UNIT:mm

SIZE	ø A	ø B	ø C	H
1"	34	RD44x1/6	25.2	20
1.5"	47.5	RD58x1/6	38.2	22
2"	61.5	RD72x1/6	51.1	24
2.5"	75.5	RD88x1/6	63.7	26
3"	87.5	RD100x1/6	76.4	28
4"	115	RD130x1/6	102	34

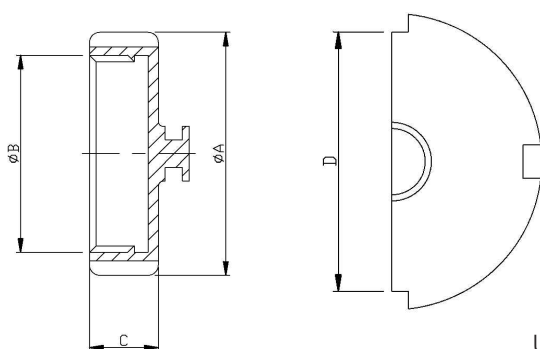
DANSK-14W WELDING LINER



UNIT:mm

SIZE	ø A	ø B	ø C	D
1"	40.0	28.6	22.5	16.0
1.2"	48.0	35.0	29.0	16.0
1.5"	54.0	41.3	35.0	18.0
2"	68.0	54.0	47.5	20.0
2.5"	84.0	66.7	60.0	22.0
3"	96.0	79.4	72.5	24.0
4"	123.5	110.0	97.5	29.0

DANSK-13AH BLANK NUT



UNIT:mm

SIZE	ø A	ø B	C	D
1"	57	RD44x1/6	20	49
1.2"	65	RD52x1/6	20	57
1.5"	72	RD58x1/6	20	63
2"	86	RD72x1/6	22	78
2.5"	103	RD88x1/6	24	95
3"	115	RD100x1/6	25	107
4"	148	RD130x1/6	31	139