

CONSUMER PRICE INDEX

JANUARY 2024

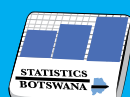


Copyright 2024 © Statistics Botswana

Contact Statistician:
Rejoyce L Mbalekelwa
Tel: 3671300/3671319

Private Bag 0024, Gaborone
Tel: 3671300
Toll Free: 0800 600 200

E-mail: info@statsbots.org.bw
Website: www.statsbots.org.bw



STATISTICS BOTSWANA

Preface

This report examines Botswana's monthly inflation rate performance as measured by the Consumer Price Index (CPI). The inflation rate measures the change in the CPI for the month of January 2024 compared to the previous month (month-on-month changes) as well as to the corresponding month in the previous year (year-on-year changes).

Price Statistics information is appropriate for the formulation of socio-economic and monetary policies. In order to produce statistics that reflect the current situation in the economy, Statistics Botswana produces the Consumer Price Index monthly, to meet the stakeholders' needs.

The annual inflation rate stood at 3.9 percent in January 2024, registering an increase of 0.4 of a percentage point on the December 2023 rate of 3.5 percent.

Statistics Botswana acknowledges and extends gratitude to all stakeholders who provided information for the production of this publication.

For more information and further enquiries, contact the Directorate of Stakeholder Relations at **+267 367 1300**. This publication and all other Statistics Botswana outputs/publications are available on the website at www.statsbots.org.bw and at the Statistics Botswana Information Resource Centre (Head-Office, Gaborone).



Dr. Burton S. Mguni
Statistician General
15th February 2024

Contents

Preface.....	i
Section 1: HEADLINE INFLATION.....	1
Section 2: CORE INFLATION.....	2
Glossary.....	13

Charts

Chart 1: NATIONAL RATE OF INFLATION	2
Chart 2: MONTHLY CHANGES IN THE CONSUMER PRICE INDEX.....	2
Chart 3: NON-TRADEABLES INFLATION RATE.....	2
Chart 4: TRADEABLES INFLATION RATE.....	2
Chart 5: CONTRIBUTION OF GROUPS TO ANNUAL INFLATION RATE.....	3

Tables

Table 1: CONTRIBUTION OF GROUPS TO ANNUAL INFLATION RATE.....	4
Table 2: CONSUMER PRICE INDEX (DECEMBER 2018 =100.0).....	5
Table 3: NATIONAL CONSUMER PRICE GROUP & SECTION INDICES (DECEMBER 2018 = 100.0).....	7
Table 4: CONSUMER PRICE INDEX BY TRADEABILITY (DECEMBER 2018 = 100.0).....	9
Table 5: CORE INFLATION RATES BY EXCLUSION AND TRIMMED MEAN.....	10
Table 6: AVERAGE ANNUAL INFLATION (DECEMBER 2018 = 100.0).....	11

Consumer Price Index

Section 1: Headline Inflation

The annual inflation rate was 3.9 percent in January 2024, compared to 3.5 percent in December 2023, registering an increase of 0.4 of a percentage point. The main drivers of the annual inflation rate in January 2024 were the following groups; Transport (0.9 of a percentage point), Food & Non-Alcoholic Beverages (0.9 of a percentage point) and Miscellaneous Goods & Services (0.8 of a percentage point). [Refer to Table 1](#) and [Chart 5](#).

The inflation rates for regions when comparing January 2024 and December 2023 showed a growth of 0.7 of a percentage point for Rural Villages, from 3.5 percent in December 2023 to 4.2 percent in January 2024. Cities & Towns inflation rate went up from 3.7 percent in December 2023 to 4.0 percent in January 2024, increasing by 0.3 of a percentage point. Similarly, the Urban Villages increased by 0.3 of a percentage point, from 3.4 percent in December 2023 to 3.7 percent in January 2024. [Refer to Table 2](#).

The national Consumer Price Index realised a drop of 0.3 percent, from 132.1 in December 2023 to 131.8 in January 2024. The Rural Villages index dropped by 0.5 percent, from 132.1 in December 2023 to 131.4 in January 2024. The Urban Villages index moved from 132.1 in December 2023 to 131.8 in January 2024, a decline of 0.3 percent. The Cities & Towns index stood at 131.9 in January 2024, registering a decrease of 0.2 percent from 132.1 in December 2023. [Refer to Table 2](#).

Two (2) group indices recorded changes of at least 1.0 percent between December 2023 and January 2024. Education rose by 1.2 percent while Transport declined by 1.9 percent. [Refer to Table 2](#).

The Transport group index was 150.3 in January 2024, a drop of 1.9 percent from the December 2023 index of 153.2. The decrease was due to a decline in the constituent section index of Operation of Personal Transport (3.6 percent). The overall decline in the Operation of Personal Transport section index was a result of the fall in retail pump prices for diesel (50ppm) and Petrol (95) by P1.25 and P0.35 per litre respectively, which effected on 21st December 2023. [Refer to Table 3](#).

Education group index rose by 1.2 percent from 118.6 in December 2023 to 120.0 in January 2024. The increase was caused by the rise in the constituent section indices of Pre-primary & Primary Education (1.6 percent) and Secondary & Tertiary Education (1.0 percent). [Refer to Table 3](#).

The Furnishing, Household Equipment & Routine Maintenance group index grew from 122.7 in December 2023 to 123.5 in January 2024, registering an increase of 0.7 percent. This growth was owed to the general increase in the constituent section indices; Furniture & Furnishing (1.4 percent), Household Textiles (0.8 percent), Household Appliances (0.6 percent), Goods & Services for Household Maintenance (0.4 percent), Small Tools, Miscellaneous Accessories (0.3 percent). However, Glassware, Tableware & Household Utensils dropped by 0.1 percent. [Refer to Table 3](#).

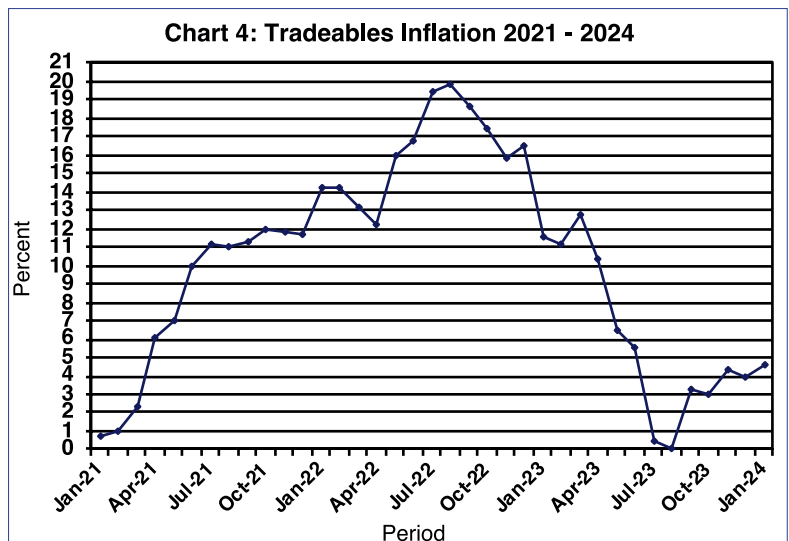
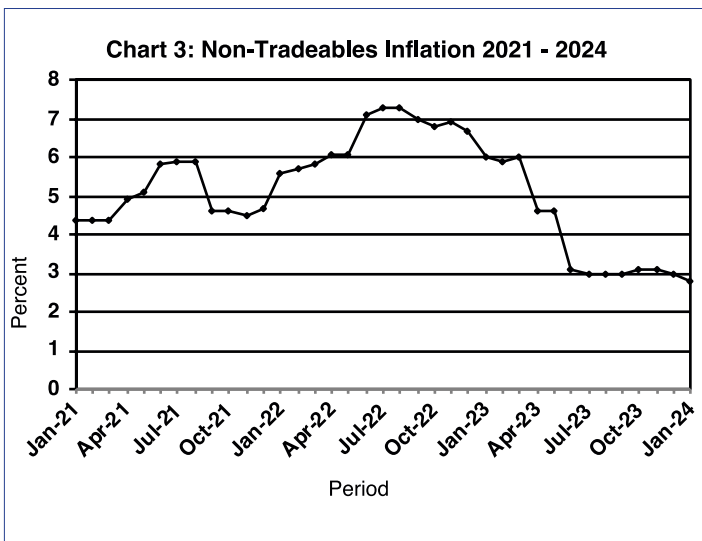
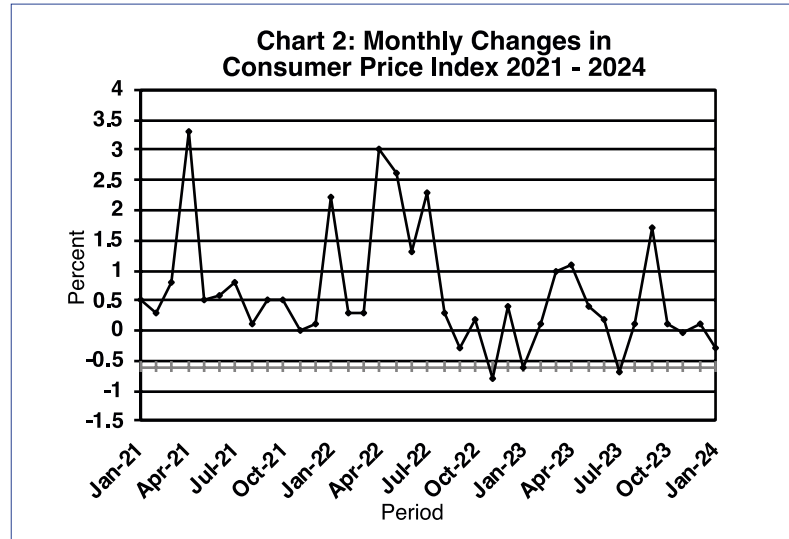
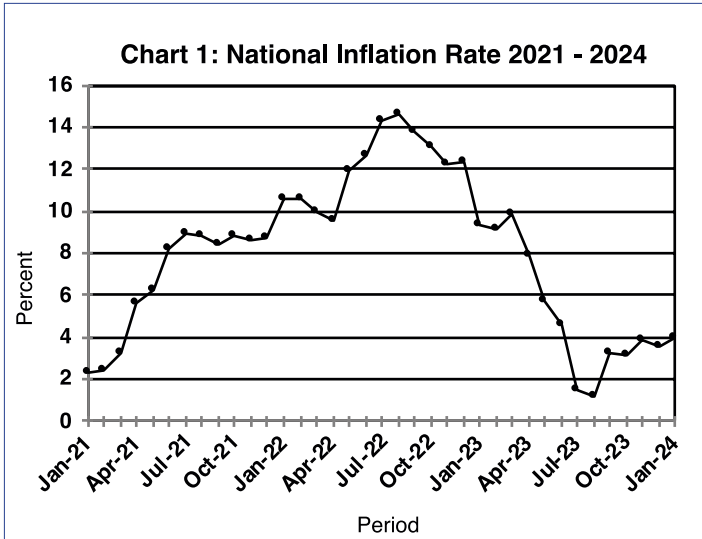
The All-Tradeables index was 138.1 in January 2024 compared to 138.8 in December 2023, registering a decrease of 0.5 percent. The Imported Tradeables Index decreased by 0.9 percent from 139.9 in December 2023 to 138.6 in January 2024. The Domestic Tradeables Index moved from 135.6 in December 2023 to 136.5 in January 2024, registering an increase of 0.7 percent. The Non-Tradeables Index increased by 0.1 percent from 123.0 in December 2023 to 123.1 in January 2024. [Refer to Table 4](#).

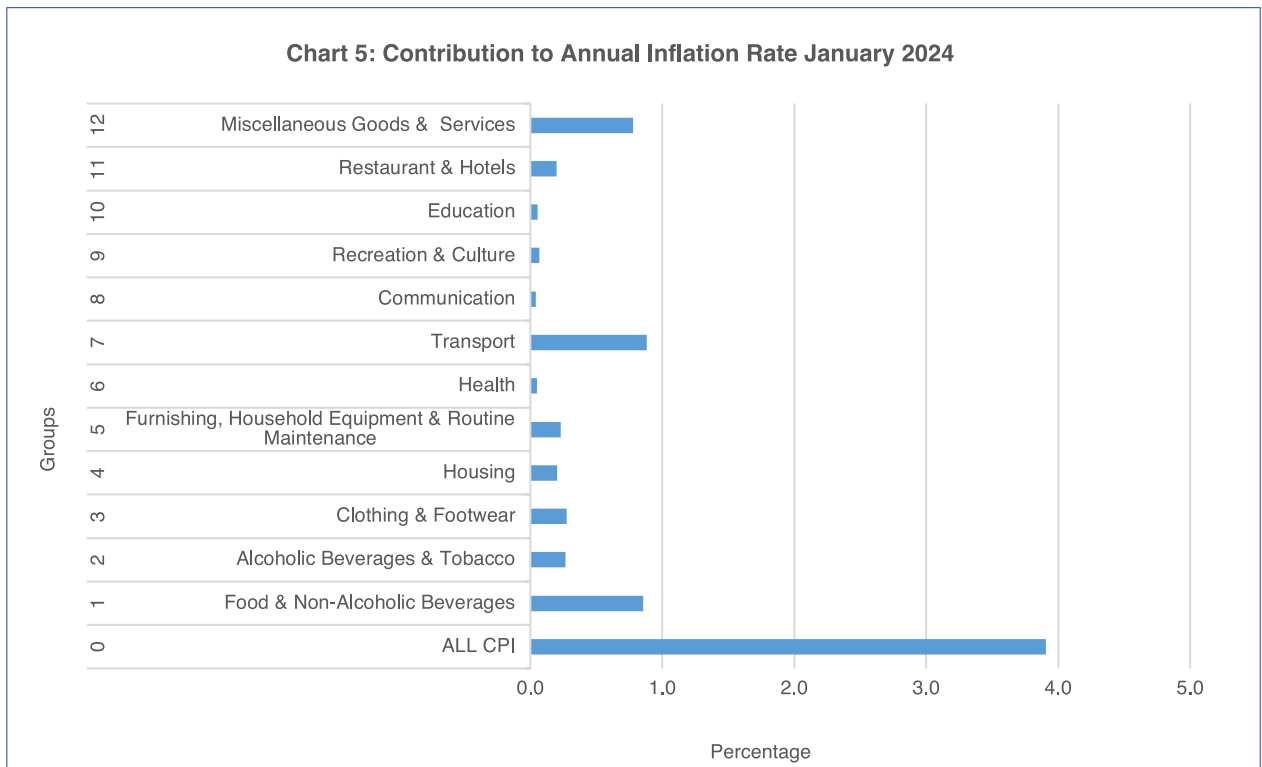
The All-Tradeables inflation rate registered an increase of 0.8 of a percentage point, from 3.9 percent in December 2023 to 4.7 percent in January 2024. The Imported Tradeables inflation moved from 3.5 percent in December 2023 to 4.7 percent in January 2024, an increase of 1.2 percentage points. The Domestic Tradeables inflation rate fell by 0.3 of a percentage point, from 4.8 percent in December 2023 to 4.5 percent in January 2024. The Non-Tradeables inflation rate was 2.8 percent in January 2024, a decline of 0.2 of a percentage point from the December rate of 3.0 percent. [Refer to Table 4](#).

Section 2: Core Inflation

The Trimmed Mean Core inflation rate went up by 0.4 of a percentage point, from 3.3 percent in December 2023 to 3.7 percent in January 2024. The Core Inflation rate (excluding administered prices) declined by 0.3 of a percentage point from 4.4 percent in December, to 4.1 percent in January 2024. Refer to Table 5.

Charts





Tables

Table 1: Contribution of Groups to Annual Inflation Rate

Group Code	Group Name	CONTRIBUTION		
		Nov-23	Dec-23	Jan-24
0	All Items Inflation Rate	3.9	3.5	3.9
1	Food & Non-Alcoholic Beverages	0.9	0.9	0.9
2	Alcoholic Beverages & Tobacco	0.2	0.3	0.3
3	Clothing & Footwear	0.3	0.3	0.3
4	Housing, Water, Electricity, Gas & Other Fuels	0.2	0.2	0.2
5	Furnishing, Household Equipment & Routine Maintenance	0.2	0.2	0.2
6	Health	0.1	0.1	0.0
7	Transport	0.6	0.4	0.9
8	Communication	0.0	0.0	0.0
9	Recreation & Culture	0.1	0.1	0.1
10	Education	0.2	0.2	0.1
11	Restaurants & Hotels	0.2	0.2	0.2
12	Miscellaneous Goods & Services	0.8	0.8	0.8

Note: Figures may vary slightly due to the rounding off

TABLE 2 : Consumer Price Index (December 2018 =100.0)

		Food	Alcohol and Tobacco	Clothing and Footwear	Housing	Furniture etc	Health	Transport	Communi-cation	Rec. & Culture	Education	Rest. & Hotels	Miscella-neous
Weights		13.55	4.34	5.95	17.45	4.85	3.38	23.43	6.94	2.82	4.60	3.66	9.01
2021	Jan	107.2	111.3	104.4	108.7	105.1	103.2	99.6	101.1	101.1	109.9	105.2	106.8
	Feb	108.0	111.5	104.6	109.0	105.2	103.2	100.0	101.1	101.6	109.9	105.5	106.9
	Mar	108.6	112.0	104.9	109.2	105.6	103.5	102.8	101.1	101.8	109.9	106.0	106.9
	Apr	111.7	117.1	105.7	113.3	106.9	104.3	108.8	101.8	103.1	109.9	107.0	112.2
	May	112.3	118.4	106.4	113.6	107.2	104.9	109.7	102.1	103.7	109.9	107.9	112.5
	Jun	112.9	118.8	106.8	115.8	107.8	104.9	110.2	102.2	104.0	110.0	108.5	112.6
	Jul	113.0	119.3	106.9	115.9	108.2	104.8	113.5	102.3	104.0	110.0	108.2	112.9
	Aug	113.2	119.5	107.0	116.0	108.4	104.9	113.4	102.3	104.1	110.0	108.7	113.2
	Sept	113.5	120.1	107.4	116.6	109.3	105.0	114.0	102.3	104.6	111.1	109.1	113.8
	Oct	114.0	120.8	107.8	116.7	109.6	105.2	117.5	102.3	104.6	111.1	109.6	114.1
	Nov	114.1	121.3	108.1	116.9	109.5	105.3	117.1	102.3	104.7	111.1	109.9	113.7
	Dec	114.4	121.7	108.3	117.5	110.0	105.4	116.8	102.2	104.9	111.1	110.0	114.1
2022	Jan	114.8	122.1	108.6	117.5	110.6	105.8	126.2	102.3	105.2	112.3	110.4	115.0
	Feb	115.3	122.2	108.7	117.6	110.9	106.0	127.0	102.3	105.4	112.4	110.7	115.4
	Mar	116.0	122.5	109.0	118.0	110.8	106.2	127.2	102.5	105.7	112.5	110.8	115.6
	Apr	118.6	123.2	109.4	122.3	111.6	106.6	134.5	102.5	107.4	112.6	111.5	121.2
	May	121.6	124.0	110.4	122.7	112.7	107.0	144.2	102.6	108.2	112.7	112.9	121.7
	Jun	123.8	124.3	111.2	123.1	113.5	107.3	148.7	102.6	108.4	112.8	113.4	123.0
	Jul	126.4	124.4	111.6	123.5	114.3	107.7	158.1	102.8	108.9	112.8	114.5	123.9
	Aug	128.2	124.4	111.7	123.0	114.6	107.9	158.5	103.9	109.2	112.8	114.9	124.3
	Sept	130.3	124.3	112.5	123.1	115.5	108.0	155.3	104.0	109.1	112.8	115.1	124.5
	Oct	132.0	124.6	113.1	123.0	115.9	108.4	155.4	104.0	109.3	112.8	115.4	124.4
	Nov	132.7	125.0	113.7	122.9	116.3	108.7	150.0	104.8	108.9	112.8	116.3	124.3
	Dec	133.8	124.8	114.0	123.0	116.9	109.1	151.0	104.8	108.8	112.8	116.4	124.8
2023	Jan	134.5	125.1	114.4	123.0	117.5	109.4	145.6	105.0	108.9	118.5	117.1	125.0
	Feb	135.3	125.6	114.8	123.0	118.0	109.5	145.1	105.0	108.9	118.5	117.4	125.3
	Mar	136.6	126.5	115.8	123.3	118.9	109.7	148.9	105.1	108.9	118.5	117.8	125.5
	Apr	138.2	128.7	116.4	124.3	119.8	110.5	149.5	105.1	110.2	118.5	118.9	132.5
	May	139.0	129.8	116.8	124.4	120.1	111.1	150.4	105.2	110.4	118.5	120.1	133.4
	Jun	139.7	130.2	117.4	124.7	119.9	111.1	150.6	105.2	110.5	118.5	120.9	133.7
	Jul	139.9	130.7	117.9	124.6	120.4	110.6	146.1	105.3	110.9	118.5	121.2	134.4
	Aug	139.8	131.1	118.1	124.5	121.0	110.8	146.1	105.3	111.4	118.6	121.8	134.5
	Sep	140.3	131.1	118.7	124.6	121.5	110.5	154.6	105.5	111.4	118.6	122.3	134.8
	Oct	140.6	131.7	119.5	124.4	121.7	110.7	154.4	105.5	111.4	118.6	122.5	135.2
	Nov	141.6	132.2	119.7	124.4	122.3	110.9	153.3	105.6	111.7	118.6	123.0	135.3
	Dec	141.9	132.3	120.1	124.5	122.7	111.2	153.2	105.6	111.9	118.6	123.6	135.4
2024	Jan	142.5	132.8	120.2	124.5	123.5	111.2	150.3	105.8	112.0	120.0	123.9	136.0
	% Change on Last month	0.4	0.4	0.2	0.0	0.7	0.0	(1.9)	0.2	0.1	1.2	0.2	0.4

Note: Figures may vary slightly due to the rounding off

TABLE 2: Consumer Price Index (Cont.)

		All Items Index	National Inflation Rate	Monthly Change	Towns & Cities Index	Urban Village Index	Rural Villages Index	Annual Inflation		
								Towns & Cities	Urban Villages	Rural
		100.0	%	%	0.38	0.41	0.21	%	%	%
2021	Jan	104.9	2.3	0.5	104.9	105.3	104.2	2.0	2.6	2.1
	Feb	105.2	2.4	0.3	105.1	105.6	104.5	2.1	2.7	2.3
	Mar	106.0	3.2	0.8	105.9	106.5	105.4	2.9	3.5	3.1
	Apr	109.6	5.6	3.3	109.7	110.0	108.4	5.5	5.9	5.2
	May	110.1	6.2	0.5	110.3	110.6	109.0	6.1	6.5	5.7
	Jun	110.8	8.2	0.6	111.0	111.3	109.6	8.2	8.3	7.9
	Jul	111.7	8.9	0.8	111.7	112.1	110.8	8.8	9.0	8.8
	Aug	111.8	8.8	0.1	111.8	112.3	110.9	8.7	8.9	8.8
	Sept	112.3	8.4	0.5	112.4	112.9	111.1	8.4	8.6	8.0
	Oct	113.3	8.8	0.9	113.3	113.8	112.4	8.7	9.0	8.6
	Nov	113.3	8.6	(0.0)	113.3	113.8	112.4	8.5	8.8	8.5
	Dec	113.5	8.7	0.1	113.4	113.9	112.7	8.6	8.8	8.7
2022	Jan	116.0	10.6	2.2	116.1	116.2	115.4	10.7	10.4	10.7
	Feb	116.3	10.6	0.3	116.4	116.7	115.6	10.8	10.4	10.6
	Mar	116.6	10.0	0.3	116.6	117.0	115.9	10.1	9.9	9.9
	Apr	120.1	9.6	3.0	120.5	120.4	118.8	9.9	9.4	9.6
	May	123.2	11.9	2.6	123.3	123.6	122.2	11.8	11.8	12.1
	Jun	124.8	12.7	1.3	125.0	125.1	124.0	12.7	12.4	13.1
	Jul	127.7	14.3	2.3	127.7	128.0	127.2	14.3	14.2	14.8
	Aug	128.1	14.6	0.3	128.0	128.5	127.7	14.5	14.5	15.1
	Sept	127.8	13.8	(0.3)	127.6	128.2	127.5	13.6	13.5	14.7
	Oct	128.1	13.1	0.2	128.0	128.4	127.8	12.9	12.8	13.8
	Nov	127.1	12.2	(0.8)	127.0	127.3	127.0	12.1	11.8	13.0
	Dec	127.6	12.4	0.4	127.4	127.8	127.6	12.3	12.2	13.3
2023	Jan	126.8	9.3	(0.6)	126.9	127.1	126.1	9.3	9.4	9.3
	Feb	126.9	9.1	0.1	126.9	127.3	126.1	9.0	9.1	9.1
	Mar	128.2	9.9	1.0	128.2	128.4	127.9	9.9	9.7	10.4
	Apr	129.7	7.9	1.1	129.7	130.0	129.0	7.6	7.9	8.6
	May	130.2	5.7	0.4	130.2	130.5	129.7	5.6	5.6	6.1
	Jun	130.5	4.6	0.2	130.5	130.9	130.0	4.4	4.6	4.8
	Jul	129.7	1.5	(0.7)	129.8	130.0	128.8	1.6	1.5	1.3
	Aug	129.7	1.2	0.1	129.8	130.0	129.0	1.5	1.2	1.0
	Sep	131.9	3.2	1.7	131.8	132.1	131.8	3.3	3.1	3.4
	Oct	132.0	3.1	0.1	132.0	132.1	131.9	3.2	2.9	3.1
	Nov	132.0	3.9	(0.0)	132.0	132.0	132.0	4.0	3.7	3.9
	Dec	132.1	3.5	0.1	132.1	132.1	132.1	3.7	3.4	3.5
2024	Jan	131.8	3.9	(0.3)	131.9	131.8	131.4	4.0	3.7	4.2
% Change on last month		(0.3)		(0.2)	(0.3)	(0.5)				

Note: Figures may vary slightly due to the rounding off

TABLE 3: National Consumer Price Group And Section Indices (December 2018=100.0)

	Group Section	Weights	This month Jan 2024	Last month Dec 2023	3 months ago Oct 2023	6 months ago Jul 2023	12 months ago Jan 2023	Percentage Change on:			
								Last month	3 months ago	6 months ago	12 months
1	Food & Non-Alcoholic Beverages	13.55	142.5	141.9	140.6	139.9	134.5	0.4	1.4	1.8	5.9
1.1	Bread & Cereals	4.26	154.0	153.4	152.6	152.7	146.0	0.4	0.9	0.8	5.5
1.2	Meat (Fresh, Chilled & Frozen)	2.36	145.2	142.9	139.5	137.7	133.3	1.6	4.1	5.5	9.0
1.3	Fish (Fresh, Chilled & Frozen)	0.18	134.2	133.7	133.5	133.4	125.9	0.3	0.5	0.6	6.6
1.4	Milk, Cheese & Milk Products	0.98	129.2	128.8	129.0	128.1	121.3	0.3	0.1	0.9	6.5
1.5	Oils & Fats	0.92	168.9	171.0	171.7	178.4	180.8	(1.2)	(1.6)	(5.3)	(6.6)
1.6	Fruits	0.78	126.8	126.1	122.8	120.8	115.6	0.5	3.2	5.0	9.6
1.7	Vegetables	1.08	142.9	144.0	143.7	141.9	129.0	(0.7)	(0.5)	0.7	10.8
1.8	Sugar, Jam, Honey, Chocolate & Confectionery	1.11	119.0	117.7	115.8	112.5	108.6	1.1	2.7	5.8	9.5
1.9	Food Not Elsewhere Classified	0.54	134.7	133.6	132.3	130.6	126.5	0.8	1.8	3.1	6.4
1.10	Coffee, Tea & Cocoa	0.73	129.1	128.9	127.4	124.4	121.1	0.1	1.3	3.7	6.6
1.11	Mineral Waters, Soft Drinks, Fruits & Vegetables Juices	0.62	121.8	121.3	121.1	120.8	118.1	0.4	0.6	0.8	3.1
2	Alcoholic Beverages & Tobacco	4.34	132.8	132.3	131.7	130.7	125.1	0.4	0.9	1.6	6.2
2.1	Alcoholic Beverages	3.51	134.5	133.8	133.2	132.1	125.9	0.5	1.0	1.8	6.9
2.2	Tobacco	0.82	125.6	125.6	125.3	124.8	121.7	0.0	0.2	0.7	3.2
3	Clothing & Footwear	5.95	120.2	120.1	119.5	117.9	114.4	0.2	0.6	2.0	5.1
3.1	Clothing	2.60	120.3	120.2	119.8	117.5	113.8	0.1	0.4	2.4	5.7
3.2	Other Articles of Clothing	0.72	119.9	119.5	119.0	118.8	114.8	0.3	0.8	1.0	4.5
3.3	Cleaning, Repair & Hire	0.61	130.0	130.1	129.7	128.3	124.9	(0.0)	0.3	1.4	4.1
3.4	Footwear	2.03	117.3	117.0	116.1	114.9	111.7	0.3	1.0	2.1	5.1
4	Housing, Water, Electricity, Gas & Other Fuels	17.45	124.5	124.5	124.4	124.6	123.0	0.0	0.0	(0.1)	1.2
4.1	Rent Paid by Tenants	7.78	122.5	122.5	122.4	122.1	120.7	0.0	0.1	0.3	1.6
4.2	Materials for Maintenance & Repair of Dwellings	3.83	125.7	125.4	125.7	127.0	125.6	0.2	(0.0)	(1.1)	0.1
4.3	Water Supply & Miscellaneous Services	1.96	112.7	112.7	112.7	112.7	111.0	0.0	0.0	0.0	1.5
4.4	Electricity, Gas & Other Fuels	3.89	133.0	133.2	133.1	133.0	131.1	(0.2)	(0.1)	0.0	1.5
5	Furnishing, H/H Equipment & Routine Maintenance	4.85	123.5	122.7	121.7	120.4	117.5	0.7	1.4	2.6	5.1
5.1	Furniture & Furnishing	1.35	120.8	119.1	117.9	116.7	116.0	1.4	2.5	3.5	4.1
5.2	Carpets & Other Floor Coverings	0.27	115.1	115.0	115.3	115.9	115.7	0.0	(0.2)	(0.7)	(0.5)
5.3	Household Textiles	0.29	118.0	117.1	116.4	116.2	114.1	0.8	1.4	1.5	3.5
5.4	Household Appliances	0.72	128.4	127.7	126.3	123.8	119.7	0.6	1.7	3.7	7.2
5.5	Glassware, Tableware & Household Utensils	0.23	131.0	131.1	130.4	128.3	122.8	(0.1)	0.5	2.1	6.7
5.6	Small Tools, Miscellaneous Accessories	0.04	126.9	126.5	125.7	126.0	122.1	0.3	0.9	0.7	3.9
5.7	Goods & Services for Household Maintenance	1.95	124.6	124.1	123.4	121.8	117.6	0.4	1.0	2.3	5.9
6	Health	3.38	111.2	111.2	110.7	110.6	109.4	0.0	0.4	0.5	1.7
6.1	Medical Products, Applications & Equipments	0.98	123.2	123.3	122.0	122.0	117.8	(0.1)	1.0	1.0	4.6
6.2	Out-Patient Services	0.93	109.6	109.4	109.3	108.9	110.8	0.2	0.3	0.7	(1.1)
6.3	Hospital Services	1.47	104.1	104.1	104.1	104.1	102.8	0.0	0.0	0.0	1.3

Note: Figures may vary slightly due to the rounding off

TABLE 3: National Consumer Price Group And Section Indices (December 2018=100.0) (Cont.)

	Group Section	Weights	This month Jan 2024	Last month Dec 2023	3 months ago Oct 2023	6 months ago Jul 2023	12 months ago Jan 2023	Percentage Change on:			
								Last month	3 months ago	6 months ago	12 months ago
7	Transport	23.43	150.3	153.2	154.4	146.1	145.6	(1.9)	(2.7)	2.9	3.3
7.1	Purchase of Vehicles	5.74	152.6	151.9	151.7	151.6	148.3	0.5	0.5	0.6	2.9
7.2	Operation of Personal Transport	12.56	152.0	157.7	160.0	144.6	145.1	(3.6)	(5.0)	5.1	4.8
7.3	Transport Services	5.13	143.8	143.8	143.8	143.8	143.7	0.0	0.0	0.0	0.1
8	Communication	6.94	105.8	105.6	105.5	105.3	105.0	0.2	0.2	0.5	0.7
8.1	Postal Services	0.21	127.5	127.5	127.5	127.5	127.5	0.0	0.0	0.0	0.0
8.2	Telephone & Telefax Equipment	1.13	118.9	117.7	117.3	115.5	114.2	1.0	1.3	2.9	4.1
8.3	Telephone & Telefax Services	5.60	102.3	102.3	102.3	102.3	102.3	0.0	0.0	0.0	0.0
9	Recreation & Culture	2.82	112.0	111.9	111.4	110.9	108.9	0.1	0.6	1.0	2.9
9.1	Audio Visual, Photographic & Information Processing Equipment	2.10	110.1	109.9	109.4	108.7	107.9	0.2	0.7	1.3	2.1
9.2	Other Recreational Items & Equipments	0.30	118.1	118.5	118.0	118.2	114.9	(0.3)	0.2	(0.0)	2.8
9.3	Recreational & Cultural Services	0.31	117.4	117.2	117.2	117.2	108.2	0.1	0.1	0.2	8.5
9.4	Newspapers, Books & Stationary	0.11	117.0	117.0	116.1	115.2	113.5	(0.0)	0.7	1.6	3.1
10	Education	4.60	120.0	118.6	118.6	118.5	118.5	1.2	1.3	1.3	1.3
10.1	Pre-Primary & Primary Education	1.89	124.4	122.4	122.3	122.3	122.2	1.6	1.6	1.6	1.7
10.2	Secondary & Tertiary Education	2.70	117.0	115.9	115.9	115.9	115.9	1.0	1.0	1.0	1.0
11	Restaurants & Hotels	3.66	123.9	123.6	122.5	121.2	117.1	0.2	1.1	2.3	5.9
11.1	Restaurants, Cafes & the Like	3.02	127.7	127.3	126.0	124.7	120.4	0.3	1.3	2.4	6.1
11.2	Accommodation Services	0.64	106.3	106.4	106.1	104.7	101.6	(0.0)	0.2	1.5	4.7
12	Miscellaneous Goods & Services	9.01	136.0	135.4	135.2	134.4	125.0	0.4	0.6	1.1	8.7
12.1	Personal Care	2.33	129.7	128.0	127.4	126.2	119.0	1.3	1.8	2.8	9.0
12.2	Personal Effects Not Elsewhere Classified	0.22	106.5	106.5	106.1	106.3	106.4	0.1	0.3	0.2	0.1
12.3	Social Protection	0.13	123.1	120.4	120.4	120.4	120.3	2.2	2.2	2.2	2.3
12.4	Insurance	3.62	151.2	151.4	151.2	151.0	134.8	(0.1)	0.0	0.1	12.2
12.5	Financial Services	1.09	125.4	125.3	125.3	124.6	123.0	0.1	0.1	0.7	1.9
12.6	Taxes, Licences & Fees	1.61	122.9	122.3	122.1	120.7	116.0	0.4	0.6	1.8	5.9
	All-Items Index	100.0	131.8	132.1	132.0	129.7	126.8	(0.3)	(0.2)	1.6	3.9

Note: Figures may vary slightly due to the rounding off

TABLE 4: Consumer Price Index By Tradeability (December 2018 = 100.0)

		All Items		Non-Tradable		Domestic Tradable		Imported Tradable		All Tradable	
		Index	Inflation	Index	Inflation	Index	Inflation	Index	Inflation	Index	Inflation
Weights		100.00		42.29		15.46		42.26		57.71	
2021	Jan	104.9	2.3	107.0	4.4	109.8	4.6	101.0	-0.7	103.4	0.7
	Feb	105.2	2.4	107.1	4.4	110.5	4.8	101.5	-0.5	103.8	1.0
	Mar	106.0	3.2	107.1	4.4	110.8	5.0	103.3	1.3	105.3	2.3
	Apr	109.6	5.6	109.8	4.9	113.7	7.2	107.9	5.7	109.4	6.1
	May	110.1	6.2	110.0	5.1	114.0	6.9	108.9	7.0	110.3	7.0
	Jun	110.8	8.2	110.8	5.8	114.0	5.9	109.7	11.6	110.8	10.0
	Jul	111.7	8.9	110.9	5.9	113.6	5.1	111.9	13.6	112.3	11.2
	Aug	111.8	8.8	111.0	5.9	113.8	4.8	112.0	13.4	112.4	11.0
	Sept	112.3	8.4	111.4	4.6	114.4	5.3	112.5	13.6	113.0	11.3
	Oct	113.3	8.8	111.5	4.6	114.7	5.4	114.6	14.7	114.7	12.0
	Nov	113.3	8.6	111.5	4.5	114.8	5.3	114.6	14.3	114.6	11.8
	Dec	113.5	8.7	111.9	4.7	115.1	5.3	114.5	14.2	114.7	11.7
2022	Jan	116.0	10.6	113.1	5.6	115.6	5.2	119.1	17.9	118.2	14.3
	Feb	116.3	10.6	113.2	5.7	115.9	4.9	119.7	18.0	118.7	14.3
	Mar	116.6	10.0	113.3	5.8	116.2	4.9	120.1	16.3	119.1	13.1
	Apr	120.1	9.6	116.5	6.1	117.9	3.7	124.6	15.5	122.8	12.2
	May	123.2	11.9	116.8	6.1	119.2	4.6	131.0	20.3	127.9	16.0
	Jun	124.8	12.7	118.7	7.1	122.4	7.3	131.9	20.3	129.4	16.8
	Jul	127.7	14.3	119.0	7.3	124.8	9.9	137.6	23.0	134.2	19.4
	Aug	128.1	14.6	119.0	7.3	125.6	10.4	138.2	23.4	134.8	19.9
	Sept	127.8	13.8	119.2	7.0	126.8	10.8	136.8	21.6	134.2	18.7
	Oct	128.1	13.1	119.1	6.8	127.9	11.5	137.2	19.7	134.8	17.5
	Nov	127.1	12.2	119.2	6.9	128.3	11.7	134.5	17.4	132.8	15.9
	Dec	127.6	12.4	119.4	6.7	129.4	12.4	135.2	18.0	133.6	16.5
2023	Jan	126.8	9.3	119.8	6.0	130.6	13.0	132.4	11.1	131.9	11.6
	Feb	126.9	9.1	119.9	5.9	131.1	13.2	132.4	10.6	132.0	11.2
	Mar	128.2	9.9	120.1	6.0	131.8	13.4	135.0	12.4	134.2	12.7
	Apr	129.7	7.9	121.8	4.6	133.3	13.1	136.2	9.3	135.4	10.3
	May	130.2	5.7	122.1	4.6	134.1	12.5	136.9	4.5	136.2	6.5
	Jun	130.5	4.6	122.4	3.1	134.6	10.0	137.2	4.0	136.5	5.5
	Jul	129.7	1.5	122.5	3.0	134.7	7.9	134.9	-1.9	134.9	0.5
	Aug	129.7	1.2	122.6	3.0	134.7	7.2	135.0	-2.3	135.0	0.1
	Sep	131.9	3.2	122.7	3.0	134.6	6.2	140.0	2.3	138.6	3.3
	Oct	132.0	3.1	122.8	3.1	134.8	5.4	140.1	2.1	138.8	3.0
	Nov	132.0	3.9	122.9	3.1	135.4	5.6	139.8	3.9	138.6	4.4
	Dec	132.1	3.5	123.0	3.0	135.6	4.8	139.9	3.5	138.8	3.9
2024	Jan	131.8	3.9	123.1	2.8	136.5	4.5	138.6	4.7	138.1	4.7
	% Change on last month	(0.3)		0.1		0.7		(0.9)		(0.5)	

Note: Figures may vary slightly due to the rounding off

TABLE 5: Core Inflation Rates By Exclusion And Trimmed Mean

Year	Month	Consumer Price Index (Trimmed Mean) (December 2018 = 100)	Core Monthly Inflation Rate (Trimmed Mean) (percentage)	Consumer Price Index (Excluding Administered Prices) (December 2018 = 100)	Core Monthly Inflation (Excluding Administered Prices) (percentage)
2021					
	Jan	105.3	2.2	106.7	3.4
	Feb	105.6	2.4	107.1	3.6
	Mar	106.2	2.8	107.5	3.9
	Apr	109.6	5.4	110.1	6.1
	May	110.0	5.8	110.9	6.7
	Jun	111.0	7.9	111.6	6.8
	Jul	113.0	8.4	112.0	7.0
	Aug	113.1	8.3	112.1	6.8
	Sept	113.1	8.0	112.7	7.1
	Oct	113.7	8.2	113.2	7.2
	Nov	113.7	8.0	113.2	7.0
	Dec	113.9	8.0	113.4	7.1
2022					
	Jan	116.2	8.8	113.8	6.7
	Feb	116.6	8.8	114.4	6.8
	Mar	116.9	8.6	114.8	6.8
	Apr	119.9	8.1	116.5	5.9
	May	121.9	9.4	118.0	6.4
	Jun	123.7	10.3	119.0	6.6
	Jul	125.8	11.5	120.4	7.6
	Aug	126.1	11.8	121.1	8.0
	Sept	126.0	11.4	121.7	8.0
	Oct	126.3	11.1	122.2	8.0
	Nov	125.9	10.8	122.6	8.3
	Dec	126.5	11.2	123.3	8.7
2023					
	Jan	127.0	8.5	124.2	9.1
	Feb	127.0	8.2	124.3	8.7
	Mar	128.5	9.2	125.1	8.9
	Apr	128.9	7.1	126.2	8.3
	May	126.0	5.4	127.0	7.7
	Jun	126.7	4.3	127.5	7.1
	Jul	126.3	2.5	127.6	5.9
	Aug	126.4	2.4	127.7	5.5
	Sep	127.4	3.3	128.1	5.2
	Oct	128.5	3.2	128.2	4.9
	Nov	132.0	3.7	128.6	4.9
	Dec	131.8	3.3	128.8	4.4
2024					
	Jan	132.9	3.7	129.3	4.1

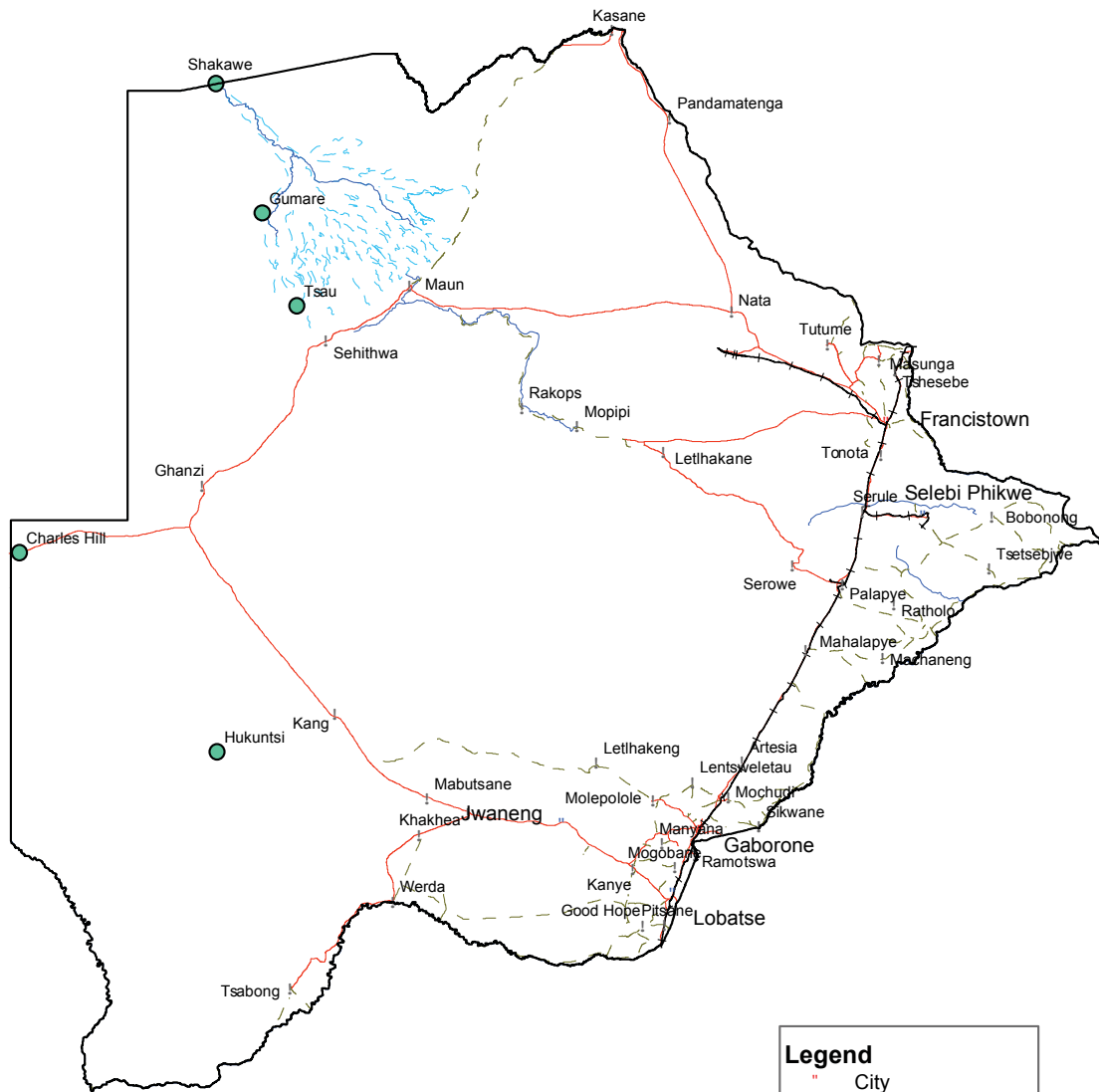
Note: Figures may vary slightly due to the rounding off

TABLE 6: Average Annual Inflation (December 2018=100)

	Group	Weights	2013	2014	2015	2016	2017	2018	2019	2020	2021	2022	2023
1	Food & Non-Alcoholic Beverages	13.55	5.4	3.0	1.3	2.7	3.4	(0.5)	1.4	3.7	6.0	11.1	11.9
2	Alcoholic Beverages & Tobacco	4.34	10.3	9.0	6.1	2.5	4.5	1.1	2.8	5.4	8.9	5.3	4.6
3	Clothing & Footwear	5.95	6.3	6.0	7.6	6.5	3.2	1.8	1.3	2.2	3.5	4.4	5.7
4	Housing, Water, Electr. Gas & Other Fuels	17.45	4.3	3.9	7.1	6.3	5.4	4.1	2.1	5.1	7.7	6.6	2.1
5	Furnishing, H/H Equipment & Routine Maintenance	4.85	4.9	5.0	6.1	3.0	3.3	2.1	2.1	2.4	3.7	5.5	5.9
6	Health	3.38	5.5	8.3	6.3	3.0	2.4	1.1	1.0	1.3	2.7	2.7	2.9
7	Transport	23.43	7.3	1.2	(5.1)	(2.7)	1.6	7.5	6.2	(2.4)	12.3	31.1	4.2
8	Communication	6.94	0.3	0.3	0.3	0.2	0.5	(4.6)	(3.8)	0.5	1.3	1.3	1.9
9	Recreation & Culture	2.82	4.5	4.2	5.7	3.0	2.2	1.8	0.4	(0.2)	3.5	4.2	2.5
10	Education	4.60	4.7	7.4	6.4	3.7	4.1	5.5	3.1	4.7	2.2	2.2	5.2
11	Restaurants & Hotels	3.66	7.9	7.6	5.5	4.0	3.7	3.4	2.5	3.2	3.1	5.2	6.2
12	Miscellaneous Goods & Services	9.01	1.2	5.2	7.2	7.5	3.9	6.4	5.3	2.0	5.4	8.8	8.7
	All-Items Index	100.0	5.9	4.4	3.1	2.8	3.3	3.2	2.8	1.9	6.7	12.1	5.2

Note: Figures may vary slightly due to the rounding off

CPI Area Coverage



01 50 00 2003 00 400 Kilometers

Legend

- City
- Towns
- ! Major Villages
- Rivers
- Main Roads
- - - Secondary Roads
- +— Railway
- - - Swamp

Compiled and Prepared by Statistics Botswana, 2016

Glossary

Consumer Price Index (CPI) is an index which measures price changes in goods and services with reference to a base period.

Inflation is a measurement of prices movement of goods and services in a particular country.

Contributions: These are percentage points that add up to the overall inflation rate. The contribution of a **group** to overall annual inflation depends on its weight in the consumption basket and its own annual inflation rate.

Domestic Tradeables refers to the goods and services which a country (Botswana) can export to other countries.

Imported Tradeables represents the goods and services which a country (Botswana) imports from other countries (trading partners).

Non-Tradeables refers to the goods and services which a country cannot either export to or import from other countries.

All –Tradeables refers to the total of **Domestic** and **Imported Tradeables**.

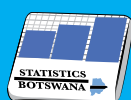
Trimmed Mean Core Inflation- attempts to remove 8 percent (by weight) of the commodity sub-groups price changes at each of the ends of an ordered series of price changes in any given month.

Core inflation by Exclusion is a measure used to remove the volatility inherent in prices that are only adjusted periodically and not always in response to currently prevailing market forces.



CONSUMER PRICE INDEX

JANUARY 2024



STATISTICS BOTSWANA

Private Bag 0024, Gaborone
Tel: 3671300 Fax: 3952201
Toll Free: 0800 600 200

Private Bag F193,
Francistown
Tel: 241 5848 Fax: 241 7540

Private Bag 47
Maun
Tel: 371 5716 Fax: 686 4327

E-mail: info@statsbots.org.bw Website: <http://www.statsbots.org.bw>