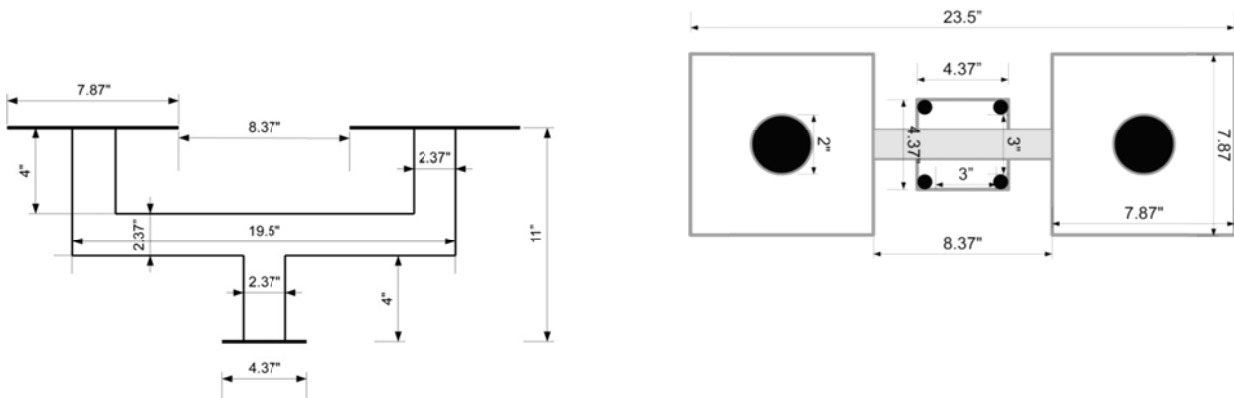




The **Heavy Duty Square Top-Mount Pedestal** has an 8" square mounting plate for accommodating large, heavy PTZ Cameras and devices. These pedestals has a 4" base that bolts on top of any 4" Strong Pole, using 5/8" bolts. Connecting the top plate and the base is a 4" long square tube 1/4" thick, to give the pedestal the rigidness needed to handle the heftier equipment. And if a single pedestal is not enough for your needs then take a look at our **Twin Top-Mount Pedestal**, which is of the same rigid frame, but can now handle twice the amount of options(i.e. Large PTZ cameras, Thermal cameras, Beacons or Strobe Lights and other security devices).

Heavy Duty Twin Top-Mount Pedestal





Heavy Duty Square Top-Mount Pedestal

