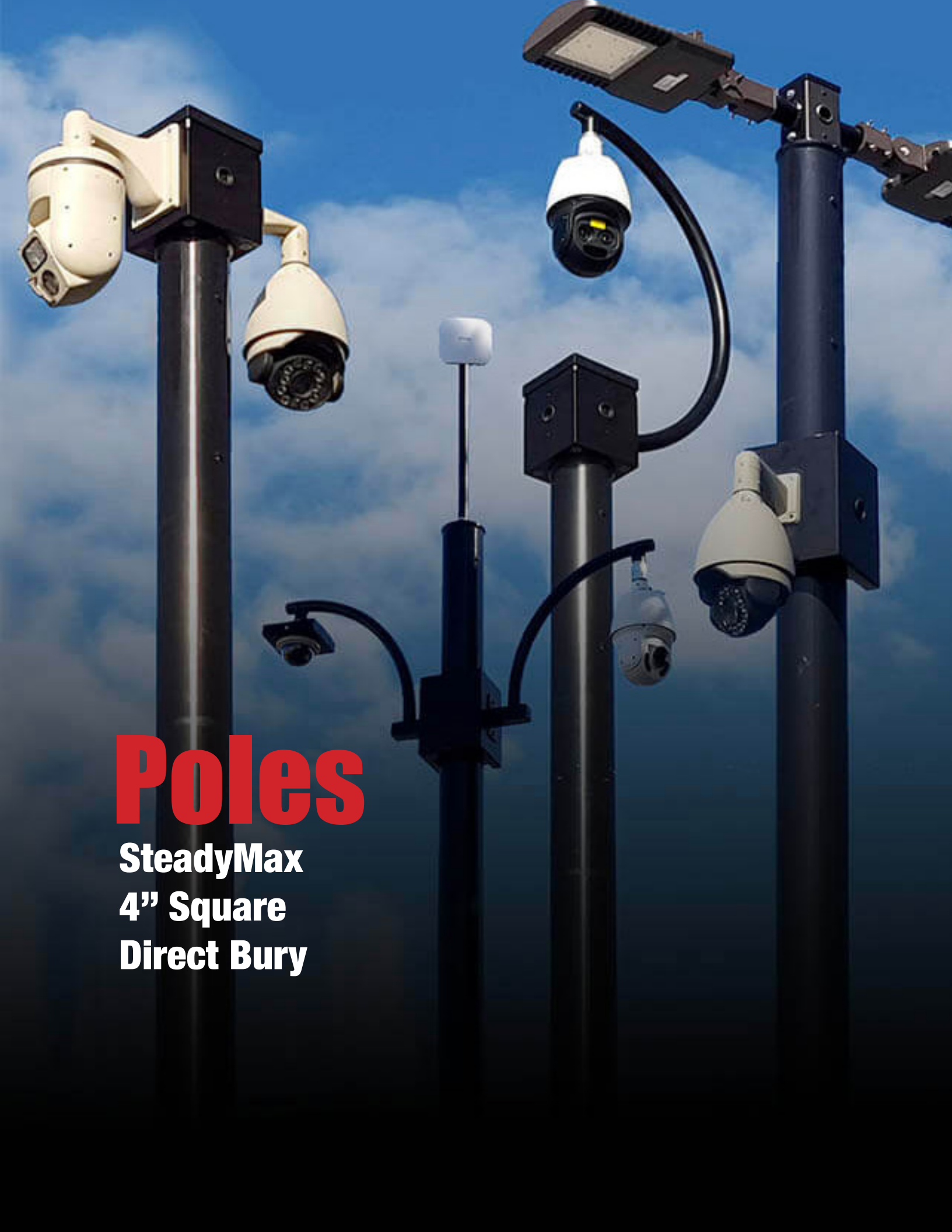




STRONG POLES 
SECURITY MOUNTING SOLUTIONS

2023 Catalog

Poles	3
Pole Foundations & Forms	8
Pole Accessories	10
Outdoor Building Mounts	15
Outdoor Mounting Accessories	19
Keypad & Reader Pedestals	26
LED Lighting	29
Indoor Mounting	32



Poles

**SteadyMax
4" Square
Direct Bury**



SteadyMax - 16 ft.

SP-SM16



16 ft. Round Non-Tapered SteadyMax - These engineered camera poles have a Factory-Installed Vibration Suppression System that consists of two different frequency dampeners that quell high and low frequency vibrations and oscillations that may occur during the life of the pole. Strong Pole Anchor Basket, template & nuts and washers, nut covers and hand-hole covers are included with each pole.

SteadyMax - 20 ft.

SP-SM20



20' Round Tapered SteadyMax - These engineered camera poles have a Factory-Installed Vibration Suppression System that consists of two different frequency dampeners that quell high and low frequency vibrations and oscillations that may occur during the life of the pole. Strong Pole Anchor Basket, template & nuts and washers, nut covers and hand-hole covers are included with each pole.

SteadyMax - 25 ft.

SP-SM25



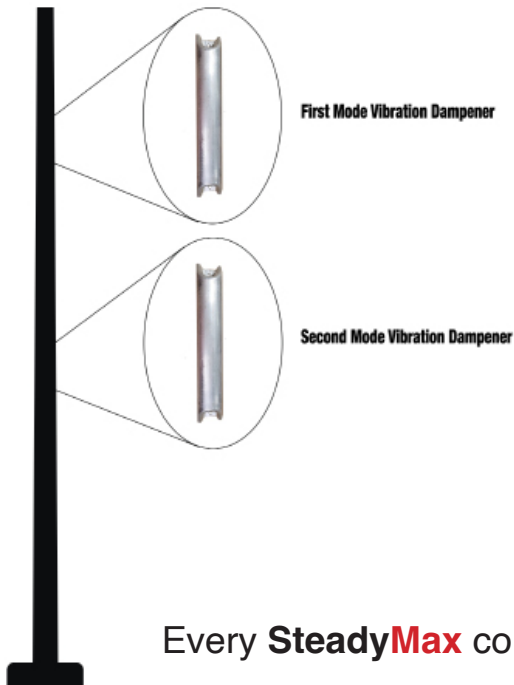
25' Round Tapered SteadyMax - These engineered camera poles have a Factory-Installed Vibration Suppression System that consists of two different frequency dampenes that quell high and low frequency vibrations and oscillations that may occur during the life of the pole. Strong Pole Anchor Basket, template & nuts and washers, nut covers and hand-hole covers are included with each pole.



SteadyMax-FL - 12 ft.

SP-SM12FL

12' Round SteadyMax Pole specially created to withstand 195mph FL winds. These engineered camera poles have a Factory-Installed Vibration Suppression System that consists of two different frequency dampeners that quell high and low frequency vibrations and oscillations that may occur during the life of the pole. Strong Pole Anchor Basket, template & nuts and washers, nut covers and hand-hole covers are included with each pole.



Every **SteadyMax** comes with a factory installed **Vibration Suppression System** that actively fights against first and second mode vibrations and shake do to wind and site frequency and resonance.

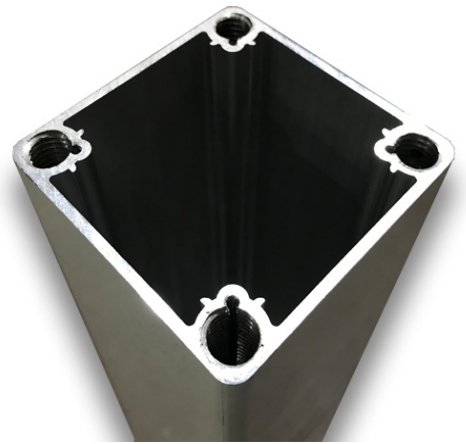


Extra Hand Hole Add-On

SP-SMXH

Add an extra hand hole to any 16, 20, or 25 ft SteadyMax Pole

4" SQUARE CAMERA POLE



4" Square Pole - 5 ft

SP-5

5' Strong Pole with Fixed Base - Built out of a special Aerospace Aluminum, these 4' Security Camera Poles are designed to reduce the amount of movement and shake commonly found with many light poles. Using Strong Poles solves a whole host of problems with using existing light poles and hose clamps for your security cameras, sensors and detectors.



4" Square Pole - 8 ft

SP-8

8' Strong Pole with Fixed Base - Built out of a special Aerospace Aluminum, these 4' Security Camera Poles are designed to reduce the amount of movement and shake commonly found with many light poles. Using Strong Poles solves a whole host of problems with using existing light poles and hose clamps for your security cameras, sensors and detectors.



4" Square Pole - 12 ft

SP-12

12' Strong Pole with Fixed Base - Built out of a special Aerospace Aluminum, these 4' Security Camera Poles are designed to reduce the amount of movement and shake commonly found with many light poles. Using Strong Poles solves a whole host of problems with using existing light poles and hose clamps for your security cameras, sensors and detectors.



SQUARE DIRECT BURY POLES



The advantages of aluminum poles make them the perfect option for direct buried applications.

With a record of successful installations throughout the country, Strong Poles Aluminum Direct Buried Poles provide industry professionals with significant overall job savings.

Strong Poles Aluminum Direct Buried Poles are the perfect solution to the high maintenance alternative of composite poles.

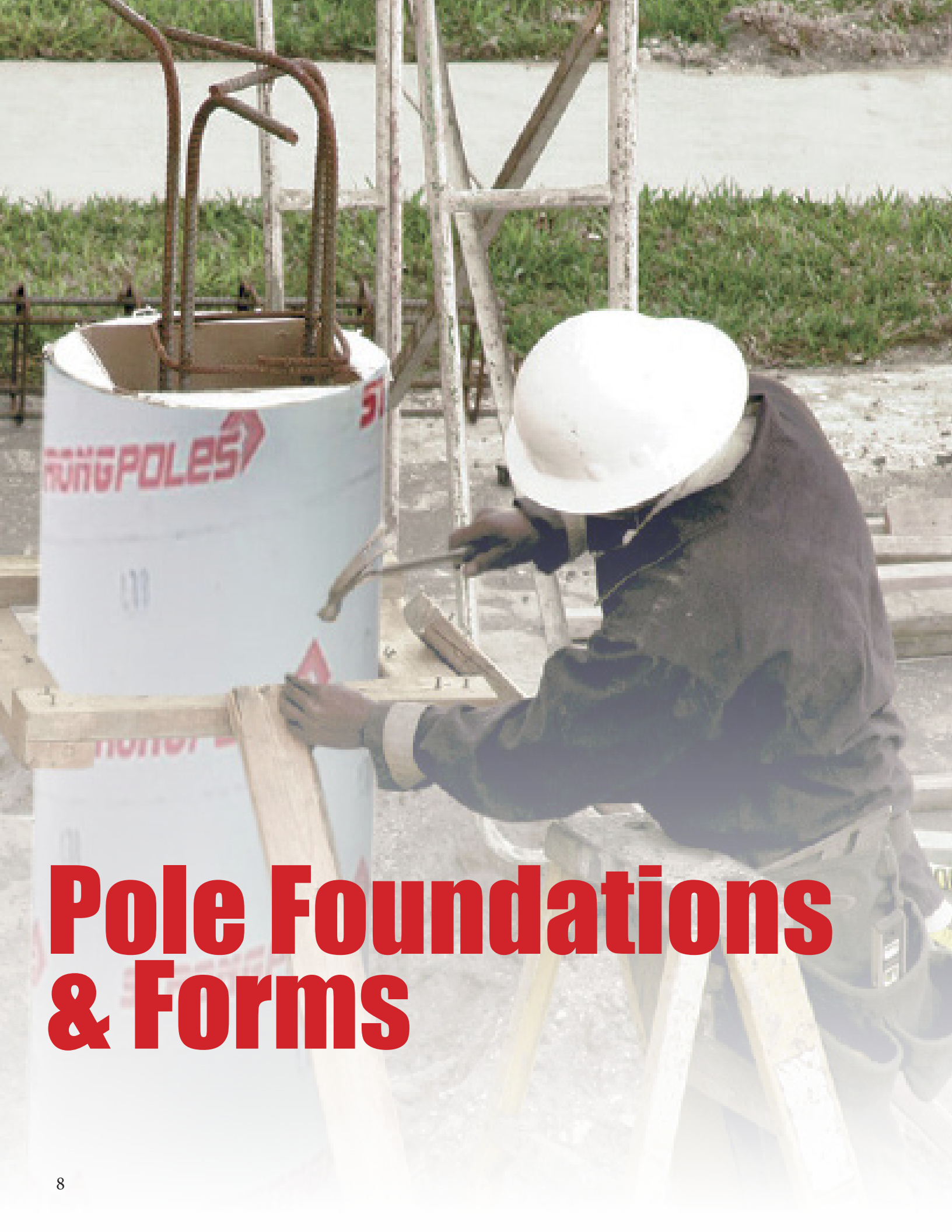
FIVE INCH DIRECT BURY



- 8 ft - SP-DB8
- 11ft - SP-DB11
- 16 ft - SP-DB16
- 20 ft - SP-DB20
- 25' - SP-DB25



- 8 ft - SP-4-DB8
- 11ft - SP-4-DB11
- 16 ft - SP-4-DB16



Pole Foundations & Forms



StrongForms

Diameter/Height: SKU:

18" / 5'

StrongForms-18-5

24" / 5'

StrongForms-24-5

30" / 6'

StrongForms-30-6



Anchor Basket

SP-AB
SP-AB-TOB

4" Square Pole Anchor Baskets w/ 5/8" NC / Studs / wooden template

**MUST SPECIFY WHICH BASE IT'S FOR
REGULAR OR TILT OVER BASE**

MSRP:
\$130.00



4" Tilt Over Base

SP-TOB

Upgraded option for the 4" Square Camera Poles to allow the pole to be tilted over for easy access to the top of the pole.



Light Pole Foundation Adapter

SP-LPA

Upgraded option for the 4" Square Camera Poles to allow the pole to be tilted over for easy access to the top of the pole.



Light Pole Adapter Hardware

SP-LPAH

Add an extra hand hole to any 16, 20, or 25 ft SteadyMax Pole



Leveling Shims

SP-LEVEL-001

3-1/8" W x 3-1/2" L x 1/16" H Leveling Shims



Pole Accessories

**Products that mount directly to
SteadyMax, 4" & 5" poles**

Fence Guard

SP-SMFG



Extending around 32" from the pole, the Fence Guard is designed to be attached to round poles and aid camera analytics down fence or property lines. It can accommodate - two cameras (domes or bullets) and a PTZ on the 1.5" threaded connector. U-bolts provided with order.

Fence Guard with Flat Mount
SP-SMFG-FM

Fence Guard with Corner Mount
SP-SMFG-CM

Reacher - Pole Mount

SP-SMREACH



5 ft Reacher Mount is designed to be attached to round poles and reach out over a property line or fence. It can accommodate a PTZ on the 1.5" threaded connector. Other camera types can be used with the use of additional mounting accessories. U-bolts provided with order. Flat and corner mounting options are available (see page 16).

Reacher with Flat Mount
SP-SMREACH-FM

Reacher with Corner Mount
SP-SMREACH-CM

Birdhouse

SP-PTZEM



The Birdhouse is an 8x8x10 mounting platform (8x8x8 actual mounting space) designed to be affixed to the top of any SteadyMax, 4" Square Camera Poles, or 5" Direct Bury (with adapter) allowing you to attach equipment to all four sides.

Wrap Around Mount

SP-SMWrap



Wrap Around Steady Max Additional Camera Platform - Originally made for 25' poles with extra hand-hole at the 20' level but will fit any height on the 12' and 16' SteadyMax poles and anywhere from half way to the top on the 20' and 25' poles. Mountable on 3 sides / includes 2 stainless steel mounting bands. Up to 120lb.

Wrap Around w/ RR Mount

SP-RRMountWrap

Side Mount PTZ Platform for top mount PTZs Plus SMWrap



Birdhouse w/ RR Mount

SP-RRMountBH

Platform for top mount PTZs Plus PTZEM



Fly-Over

SP-PTM

The Fly-Over was designed to provide a wider field of view for PTZ cameras that hang from the 1.5" threaded connector. There are many ways you can use this mount from PTZs to panoramic cameras.

**Standard Side Mounting Plate*



Fly-Out

SP-PTMRFO

Like the Fly-Over the Fly-Out provides you with a wider field of view with the added functionality of mounting it directly to a wall using the available wall mount (see page 16). The Fly-Out has a 1.5" threaded connector.

**Standard Side Mounting Plate*



6x6 Junction Box

SP-TMJB

Designed to be mounted on top of a pole; each 4x6 face of the 6x6 Junction Box can be mounted to.



HD Square Pole Top Pedestal

SP-TMSQHD

Heavy Duty Top Mount Square Pedestal Mount



Twin HD Square Pole Top Ped-

SP-TwinTMSQ

Twin Top Mount Square Pedestal Mount



Birdhouse with Antenna Mast



Fence Guard



Pole Top Antenna Mast

SP-TMAM



Measuring 39" high, the Pole Top Antenna Mast provides ample reach and space for mounting wireless antennas or other security equipment on top of your pole.

Pole Top Mounting Pedestal

SP-TenMountPed



The 4x4x7.5 inch mounting pedestal provides an excellent mounting platform for Fly-Outs, Fly-Overs (see page 12) or any of our mounting accessories with our *Standard Side Mounting Plate Configuration* like the Tenon Mounts on page 25.



SteadyMax with Pole Top Mounting Pedestal, LED Area Lights, and Fly Out



SteadyMax with Pole Top Mounting Pedestal, LED Area Light, and 5' Reacher



Outdoor Building Mounts

**Products that mount to the
exterior of buildings**

Reacher - Corner Mount

SP-SMREACHCM

5' Corner Mount Reacher is designed to be attached to exterior corners of buildings. It can accommodate a PTZ on the 1.5" threaded connector. Other camera types can be used with the use of additional mounting accessories. Pole mounting options are available (see page 11).



Reacher - Flat Mount

SP-SMREACHFM

5' Flat Mount Reacher is designed to be attached to exterior of buildings. It can accommodate a PTZ on the 1.5" threaded connector. Other camera types can be used with the use of additional mounting accessories. Pole mounting options are available (see page 11).



Fly-Out Wall Mount

SP-PTMRFOWM

Fly-Out Wall Mount is a simple yet powerful little device that allows you to attach one of our Fly-Outs (see below and on page 12) to a wall.



Fly-Out

SP-PTMRFO

Like the Fly-Over the Fly-Out provides you with a wider field of view with the added functionality of mounting it directly to a wall using the available wall mount (see above). The Fly-Out has a 1.5" threaded connector.

**Standard Side Mounting Plate*





Surface Mount Pole

SP-SMP15
SP-SMP30
SP-CRPM48

Built with the same square aluminum stock as our 4" Square Camera Poles these 15", 30", and 48" Surface Mount Pole are perfect for adding security mounting options to nearly any surface.

48" Surface Mount Pole is available in hammered black only.



Parapet Mount

SP-Parapet

This sturdy Parapet Mount attaches to a Parapet Wall and can be rotated 360 degrees to accommodate any mounting angle. The 1.5" threaded connection is perfect attaching a PTZ and the "Back Flip" design makes mounting and adjusting cameras a breeze! For added ability see the PTZ extensions and adapters on page 24 and 25.



HD Parapet Mount

SP-ParapetHD

The Heavy Duty Parapet Wall Camera Mount is perfect for mounting multiple PTZ Cameras and wireless devices to parapet walls. Its sturdy construction is capable of supporting up to 50lbs without significant bending. The 360 degree rotation and "Back Flip" design make this an unbeatable mount.

Can be paired with **Parapet Extension - SPTPEPMO**



4" Square Pole Wall Mount

SP-WM



The 4" Square Wall Mount works with our 5', 8', and 12' 4" Square Camera Poles (see page 6) allowing you to mount them at any height on an exterior building wall.

Corner Mount

SP-CM



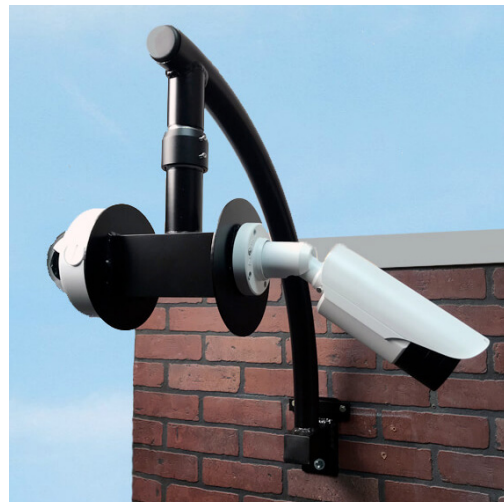
3-sided corner mount with top & bottom caps allow you to mount your equipment by drilling holes where you need them.

HD Corner Mount

SP-CM



Our Heavy Duty Corner Mounts are made out of the same extruded aluminum that our 4" Square Camera Poles are made of so you know they are strong. 3 sides are fitted with our *Standard Side Mounting Plate* configuration.





Outdoor Mounting Accessories



Side Mount Antenna Mast

SP-SMAM

The Side Mount Mast is constructed with 1-1/2" aluminum tubing and attaches to any of our products with our *Standard Side Mounting Plate* configuration. This 36" high mast is tall enough for the largest antennas. The top end is capped with a weatherproof plastic cap insert.

Fly-Over / Fly-Out Dome Mount

SP-DomeMountFO



This Dome Mount is designed to fit to the 1.5" threaded connection on the Fly-Over & Fly-Out Mounts but could be fitted to any of our accessories with the same 1.5" NPT fitting.

Dual Camera Mount

SP-DualParaMount



Dual Dome/Bullet Adapter is a perfect complement to our 2 Foot Arm, Parapet Mounts, 5' Reacher and more.

Dual Camera Mount with PTZ Adapter
SP-DualParaMountXN



2 Foot Arm

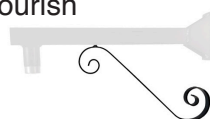
SP-2FtArmGusset



The 2 Foot Arm is a fantastic utility mount. Perfect for mounting PTZs on the 1.5" threaded connection or other cameras with other available accessories.

Standard Side Mounting Plate

SP-2FTArmGusset-Flourish



Junction Box w/ Side Mounts

IMS-J2TSM



4"x4"x7" Junction Box with 3 *Standard Side Mounting Plate Configurations*

Fly-Out Pedestal

SP-FlyoutPed



7.5" tall piece of 4" SP with mounting holes Square fly-out pedestal
Standard Side Mounting Plate configurations

Side Mount Platform

SP-PACM



Pedestal Attached Camera Mount
Standard Side Mounting Plate

1.5" Coupler

SP-1.5Coupler



1.5" to 1.5" double alum pipe coupler w/ 2 set screws

1.5" to .75" Reducer

SP-1.5reducer

1.5" to 3/4" reducer



.75" to .5" Reducer

SP-.75reducer

3/4" to 1/2" reducer



Antenna Mast for Birdhouse

SP-PTZEM-AT

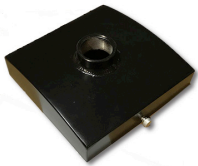
This 39" tall Antenna Mast is designed to be attached to our Birdhouses (see page 11).



Panoramic Camera Mount

SP-PANO

The Panoramic Camera Mount can be attached to any of our mounts with the 1.5" NPT threaded connection.



StrongMount-44

StrongMount-44

4x4x3 Nema/UL 6P (IP68) Impact and Sun Resistant Polycarbonate Enclosure



StrongMount-55

StrongMount-55

5x5x3 Nema/UL 6P (IP68) Impact and Sun Resistant Polycarbonate Enclosure



StrongMount-66

StrongMount-66

6x6x3 Nema/UL 6P (IP68) Impact and Sun Resistant Polycarbonate Enclosure



StrongMount-86

StrongMount-86

8x6x3 Nema/UL 6P (IP68) Impact and Sun Resistant Polycarbonate Enclosure





StrongMount-98

StrongMount-98

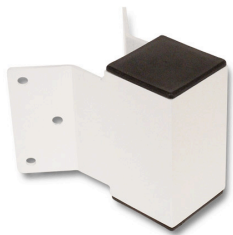
9x8x3 Nema/UL 6P (IP68) Impact and Sun Resistant Polycarbonate Enclosure



StrongMount-2016

StrongMount-2016

20x16x8 Nema/UL 6P (IP68) Impact and Sun Resistant Polycarbonate Enclosure



Corner Mount

SP-CM

3-sided corner mount with top & bottom caps



Parapet Extension

SP-TPEPMO

The Parapet Extension provides you with an added 18" of reach and is only available in white only - 1.5" NPT threaded connection.

Can be paired with **HD Parapet** - SP-ParapetHD



Twin PTZ Adapter

SP-TPA

Twin PTZ Adapter 18" long adapter that will connect to any accessory with a 1.5" NPT allowing two PTZs to be attached.



Horizontal Tenon Mount

SP-TenonH

6" Horizontal Tenon that can be mounted directly to the Strong Poles Tenon Mounting Platform. Tenons mounts are all 2 3/8" and any combination of up to four of the horizontal or vertical tenons can be mounted on one Tenon Mounting Pedestal.

Standard Side Mounting Plate



Vertical Tenon Mount

SP-TenonV

4" Vertical Tenon that can be mounted directly to the Strong Poles Tenon Mounting Platform. Tenons mounts are all 2 3/8" and any combination of up to four of the horizontal or vertical tenons can be mounted on one Tenon Mounting Pedestal.

Standard Side Mounting Plate



HD Corner Mount

SP-HDCM

Heavy Duty corner mount with 3 sides fitted with our *Standard Side Mounting Plate configuration*.



A black, rectangular keypad and reader pedestal is mounted on a black, curved post. The pedestal features a numeric keypad with 12 buttons arranged in a 3x4 grid, a circular blue indicator light, and a speaker grille. The device is positioned in front of a chain-link fence, with green grass and foliage visible in the background. The text "Keypad & Reader Pedestals" is overlaid in white, bold font on the lower portion of the image.

Keypad & Reader Pedestals



HD Architectural Keypad Pedestal

SP-PM484

Heavy Duty 48" height with faceplate at 42", made from 4" square aluminum with pyramid cap



Gooseneck Pedestal - 36

SP-CMP36

Curb Mounted 36" Model made from 1.5" tubing



Gooseneck Pedestal - 42

SP-PMP42

Pad Mounted 42" Model made from 1.5" tubing



Gooseneck Pedestal - 48

SP-PMP48

Pad Mounted 48" Model made from 1.5" tubing



Dual Height Pad Mounted Pedestal

SP-DualHeavyP

For Cars & Big Trucks - made from 3" square with lower face at 42" and upper face at 72"

Touch-less Card Reader Pedestal

SP-CRPM48

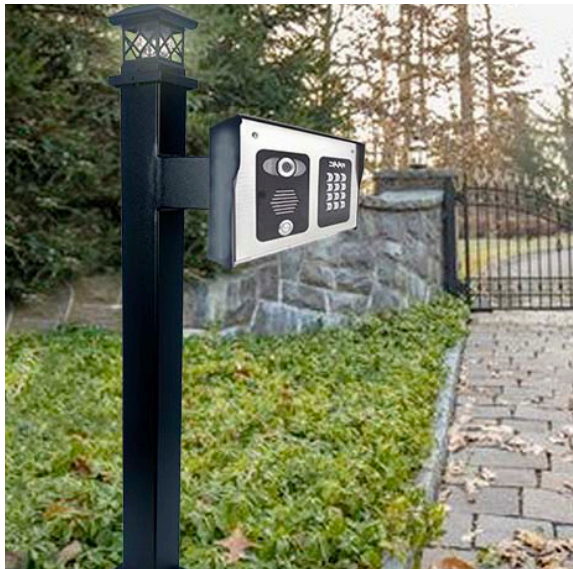
48" height made from 4" square aluminum



Direct-Burial Goose-neck Keypad Pedestal

SP-DBP66

66" height total made from 1.5" tubing so 2' can be buried and 42" left above ground



LED Lighting

for parking lots & other outdoor areas



100W - LED Area Light

SP-X100W

100W LED lights with Type III lens, 4000 - 5000K Color Temp (Daylight), 2-3/8" Tenon Slip-fit Mounts, Accept any Voltage from 120-277V AC



150W - LED Area Light

SP-X150W

150W LED Light with Type III lens, 4000 - 5000K Color Temp (Daylight), 2-3/8" Tenon Slip-fit Mounts, Accept any Voltage from 120-277V AC



200W - LED Area Light

SP-X200W

200W LED Light with Type III lens, 4000 - 5000K Color Temp (Daylight), 2-3/8" Tenon Slip-fit Mounts, Accept any Voltage from 120-277V AC



250W - LED Area Light

SP-X250W

250W LED Light with Type III lens, 4000 - 5000K Color Temp (Daylight), 2-3/8" Tenon Slip-fit Mounts, Accept any Voltage from 120-277V AC



320W - LED Area Light

SP-X320W

320W LED Light with Type III lens, 4000 - 5000K Color Temp (Daylight), 2-3/8" Tenon Slip-fit Mounts, Accept any Voltage from 120-277V AC



LED Area Light Photocell

SP-XPC

Photocell for all SP-X LED lights



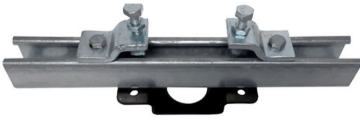
Input voltage	Power	CCT	Lens	Sensor	Arm
HV	320W	40K	YYY	Z	R
Blank AC120-277V/	80W	40K 4000K	III Type III	D With	S Slip Fitter Arm
HL AC120-347V	100W	50K 5000K	V Type V	N Without	E Extruded Arm
HV 277-480V	150W	57K 5700K	90 90°		M Surface mount
	250W				F Slip Fitter+Extruded Arm
	320W				



Indoor Mounting

Beam Clamp with Egyptian Pipe Hanger

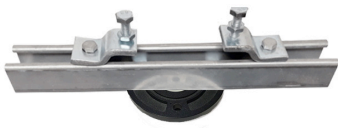
IMS-BCE



Beam Clamp with the “Egyptian” threaded ceiling mount pipe drop adapter

Beam Clamp with Round Pendant Pipe Hanger

IMS-BCPM



Beam Clamp with Round Pendant Pipe Hanger

Pipe Clamp with Egyptian Pipe Hanger

IMS-PCE



Pipe Clamp with the “Egyptian” threaded ceiling mount pipe drop adapter

Round Pendant Pipe Hanger with concrete anchors

IMS-PM



Round Pendant Pipe Hanger w/ concrete anchors



8" Pipe Drop

IMS-PD8in

8 inch long 1.5" NPT Threaded Pip Drop with PTZ Collar
Can be attached to any of the Egyptian or Round Pendant pipe hangers
or any accessory with a 1.5" NPT fitting.



19.5" Pipe Drop

IMS-PD19in

19.5 inch long 1.5" NPT Threaded Pip Drop with PTZ Collar
Can be attached to any of the Egyptian or Round Pendant pipe hangers
or any accessory with a 1.5" NPT fitting.



4' Pipe Drop

IMS-PD4ft

4' 1.5" NPT Threaded Pip Drop with PTZ Collar
Can be attached to any of the Egyptian or Round Pendant pipe hangers
or any accessory with a 1.5" NPT fitting.



6' Pipe Drop

IMS-PD6ft

6 ft. 1.5" NPT Threaded Pip Drop with PTZ Collar
Can be attached to any of the Egyptian or Round Pendant pipe hangers
or any accessory with a 1.5" NPT fitting.



8' Pipe Drop

IMS-PD8ft

8 ft. 1.5" NPT Threaded Pip Drop with PTZ Collar

Can be attached to any of the Egyptian or Round Pendant pipe hangers or any accessory with a 1.5" NPT fitting.



10' Pipe Drop

IMS-PD10ft

10 ft. 1.5" NPT Threaded Pip Drop with PTZ Collar

Can be attached to any of the Egyptian or Round Pendant pipe hangers or any accessory with a 1.5" NPT fitting.



IMS Junction Assembly

IMS-J1TFB

4"x4"x7" Junction with Threaded top and solid bottom plate and one 2"x4.5" access / hand hole opening with gasket and cover.



IMS Junction In-Line Assembly

IMS-J2T

4"x4"x7" Junction with Threaded top and Bottom and one 2"x4.5" access / hand hole opening with gasket and cover.

IMS Accessory Platform

IMS-MAP1TFB



4"x4"x7" Accessory Mounting Platform with Threaded top and solid bottom plate.
Standard Side Mounting Plate Configuration on all four sides

IMS In-Line Accessory Platform

IMS-MAP2T



4"x4"x7" Accessory Mounting Platform with Threaded top and bottom plate.
Standard Side Mounting Plate Configuration on all four sides

6x8 Multi-Purpose Box

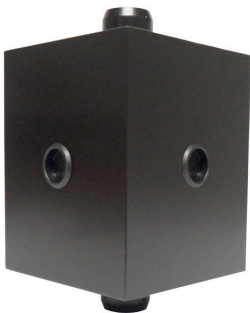
IMS-MP68



Multi-Purpose 6"x8" double threaded box with 2"x4.5" access hand hole and 3 accessory attachment holes.

8x10 Multi-Purpose Box

IMS-MP810



Multi-Purpose 8"x10" double threaded open box with 4 accessory attachment holes.



StrongMount-44

StrongMount-44



4x4x3 Nema/UL 6P (IP68) Impact and Sun Resistant Polycarbonate Enclosure

StrongMount-55

StrongMount-55



5x5x3 Nema/UL 6P (IP68) Impact and Sun Resistant Polycarbonate Enclosure

StrongMount-66

StrongMount-66

6x6x3 Nema/UL 6P (IP68) Impact and Sun Resistant Polycarbonate Enclosure



StrongMount-86

StrongMount-86

8x6x3 Nema/UL 6P (IP68) Impact and Sun Resistant Polycarbonate Enclosure



StrongMount-98

StrongMount-98

9x8x3 Nema/UL 6P (IP68) Impact and Sun Resistant Polycarbonate Enclosure



StrongMount-2016

StrongMount-2016

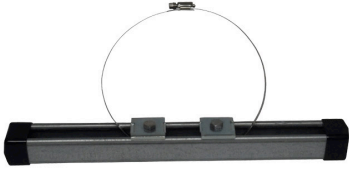
20x16x8 Nema/UL 6P (IP68) Impact and Sun Resistant Polycarbonate Enclosure



16" StrongStrut - Band Clamp

IMS-16long3/8B

16" long Strong Strut with stainless steel band and end caps



8" StrongStrut - Band Clamp

IMS-8long3/8B

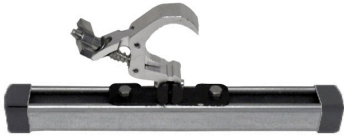
8" long Strong Strut with stainless steel band and end caps



16" StrongStrut - Pipe Clamp

IMS-16long3/8H

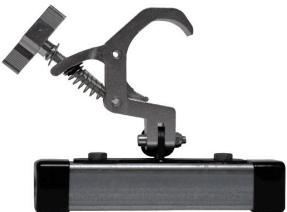
16" long Strong Strut with pipe clamp and end caps



8" StrongStrut - Pipe Clamp

IMS-8long3/8H

8" long Strong Strut with pipe clamp and end caps



16" StrongStrut - Z Clamp

IMS-16long3/8BCM

16" long Strong Strut with Z clamps and end caps



8" StrongStrut - Z Clamp

IMS-8long3/8BCM

8" long Strong Strut with Z clamps



16" StrongStrut - Egyptian

IMS-16long3/8E

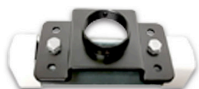
16" long Strong Strut with the "Egyptian" threaded ceiling mount and end caps



8" StrongStrut - Egyptian

IMS-8long3/8E

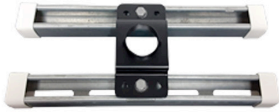
8" long Strong Strut with Egyptian mount and end caps



2x 16” StrongStrut - Egyptian

IMS-16long3/8ED

Two 16” long Strong Struts with the “Egyptian” threaded ceiling mount and end caps



2x 8” StrongStrut - Egyptian

IMS-8long3/8ED

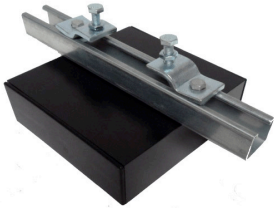
Two 8” long Strong Struts with the “Egyptian” threaded ceiling mount and end caps



8” CamBlox - Z Clamps

IMS-CBBCMS

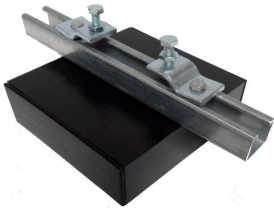
8” CamBlox with 14” Strong Strut and Z clamps

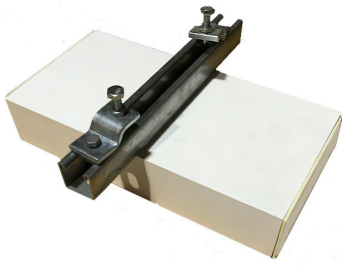


12” CamBlox - Z Clamps

IMS-CBBCMD

12” CamBlox with 14” Strong Strut and Z clamps





16" CamBlox - Z Clamps

IMS-CBBCMT

16" CamBlox with 14" Strong Strut and Z clamps



8" CamBlox - Pipe Clamp

IMS-CBPCMS

8" CamBlox with pipe clamp



12" CamBlox - Pipe Clamp

IMS-CBPCMD

12" CamBlox with pipe clamp



16" CamBlox - Pipe clamp

IMS-CBPCMT

16" CamBlox with pipe clamp

8" CamBlox - Pendant

IMS-CBPMS

8" CamBlox with pendant mount



12" CamBlox - Pendant

IMS-CBPMD

12" CamBlox with pendant mount



16" CamBlox - Pendant

IMS-CBPMT

16" CamBlox with pendant mount



10' StrongStrut - Short Slots

IMS-SSS

10 ft. stick of 1-5/8" Channel Strong Strut w/ Short Slots



14" StrongStrut - Short Slots

IMS-SSS-14

14" piece of 1-5/8" Channel Strong Strut w/ Short Slots



10' StrongStrut - Long Slots

IMS-SSL

10' stick of 1-5/8" Channel Strong Strut w/ Long Slots



16" StrongStrut - Long Slots

IMS-SSL-16

16" piece of 1-5/8" Channel Strong Strut w/ Long Slots



8" StrongStrut - Long Slots

IMS-SSL-8

8" piece of 1-5/8" Channel Strong Strut w/ Long Slots



StrongStrut Nut

IMS-SS38nut

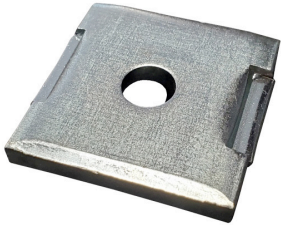
3/8" Strong Strut nut without spring



StrongStrut Washer

IMS-SS38SqW

Square Strong Strut washer for 3/8" HDW w/Chnl guide



StrongStut Cap

IMS-SSCap

Plastic End Cap for 1-5/8" Strong Strut



StrongStrut Mounting Bolt

IMS-SS38Bolt

3/8" bolt used to mount things to Strong Strut



Worm-gear Mounting Bands

IMS-SSBands

100-200mm stainless steel bands



Threaded Ceiling Mount Adapter

IMS-E

The “Egyptian” threaded ceiling mount adapter with set screws allows you to mount equipment from ceilings using a pipe drop system



Pipe Clamp

IMS-PC

Pipe clamp with bracket at bottom



Z Clamp

IMS-Z

Z clamps



CamBlox

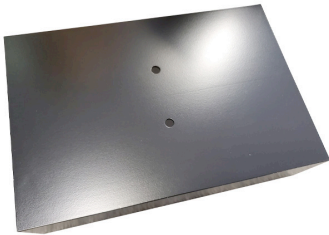
IMS-CBS



CamBlox Single Body (8"x8"x3")

CamBlox

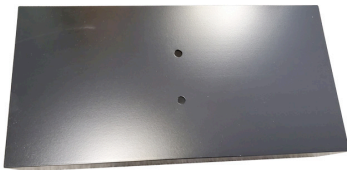
IMS-CBD



CamBlox Double Body (8"x12"x3")

CamBlox

IMS-CBT



CamBlox Triple Body (8"x16"x3")

CamBlox Cap

IMS-CBCap



CamBlox Caps (priced individually)

CamBlox glands

IMS-CBGlands

CamBlox glands



CamBlox - StrongStrut Hardware

IMS-CBSSHardware

CamBlox Strong Strut hardware pack



CamBlox - Pipe Clamp Hardware

IMS-CBPCHardware

CamBlox Pipe Clamp hardware pack



Junction Box Body

IMS-J

Junction main body



Modular Accessory Platform

IMS-MAP



MAP main body

MAP & Junction Box Solid Plate

IMS-JMAPBP



Junction & MAP Full bottom plate with 4 holes

Hand Hole Cover

IMS-JHHC



Junction Hand Hole Cover with 2 screws

MAP & Junction Box Threaded

IMS-JMAPTTP

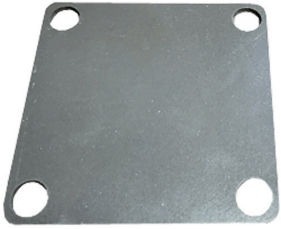


Junction & MAP Top Plate with 1.5" threaded center hole and 2 set screws

4x4 Gasket

IMS-JMAPTPG

Junction & MAP 4"x4" gasket with 4 corner holes



Hand Hole Gasket

IMS-JHHG

Junction Hand Hole gasket



5/8-11 x 1 Torx Screw

IMS-JMAPTORX

Junction & MAP 5/8-11 X 1 BH TORX SCREW ALLOY STANDARDIZE



MAP 1.5" Cap

IMS-MAPCap

MAP 1.5" cap to cover main holes - Birdhouse plugs



MAP Small Caps

IMS-MAPCapTiny



MAP cap for tiny holes on each side

1.5" Coupler

IMS-PTZCollar



1.5" coupler and set screws

Multi-Purpose Hand Hole Gasket

IMS-MP68Gasket



MP68 Hand Hole gasket

Multi-Purpose Hand Hole Cover

IMS-MP68HHC



MP68 Hand Hole Cover with 2 screws

6x8 Multi-Purpose Box Main

IMS-MP68Caps

MP68 1-1/8" caps to cover main holes



8x10 Birdhouse Main Hole Caps

IMS-MP810Cap

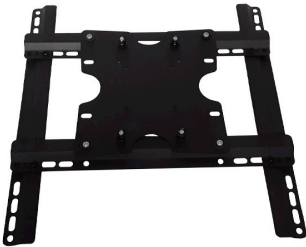
MP810 1.5" cap to cover main holes - Birdhouse plugs



TV Mount

IMS-TVMount

TV mount



TV Mount Bolts

IMS-TVMountBolts

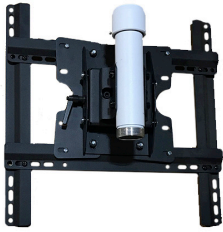
Bolts to attach TV Mount



TV Mount

IMS-TV

TV Mount with 8" Pendant Drop and Threaded Collar



Dual TV Mount

IMS-TV2

Two TV Mounts with 8" Pendant Drop and Threaded Collar



Junction Box w/ Side Mounts

IMS-J2TSM

4"x4"x7" Junction Box with 3 Standard Side Mounting options and one 2"x4.5" access / hand hole opening with gasket and cover.



HD Corner Mount

SP-HDCM

Heavy Duty corner mount with 3 sides fitted with our Standard Side Mounting Plate configuration.





**Don't Settle for less.
Choose the best.**

Home of SteadyMax - The Most Rigid Pole in The World



STEADYMAX
FLORIDA POLE

**Designed to withstand
195 MPH winds!**

**Don't Settle for a repurposed light pole.
Choose the engineered solution.**

StrongPoles.com / 844-669-3537