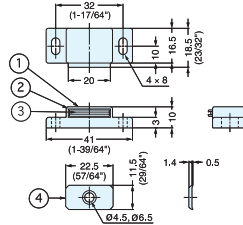
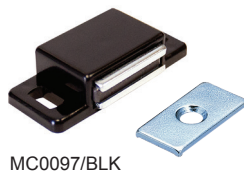
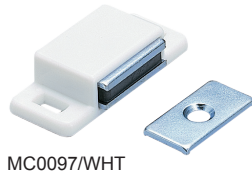


MAGNETIC CATCH



MC0097



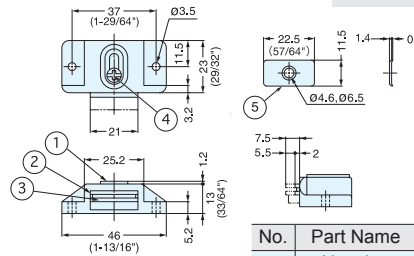
No.	Part Name	Material	Finish/Color
①	Housing	Polyethylene	Black/White
②	Yoke	Steel	Chromate
③	Magnet	Ferrite	-
④	Counterplate	Steel	Chromate

Item No.		Magnetic Force (kg)	Weight (g)	Box (pcs)	Carton (pcs)
White	Black				
MC0097/WHT	MC0097/BLK	1.5 (3.3 lbs)	12	100	1000
MC0097/WHT-1	MC0097/BLK-1	3.5 (7.7 lbs)			

MAGNETIC CATCH



MC-84



• Adjustable magnet position (5.5 mm)

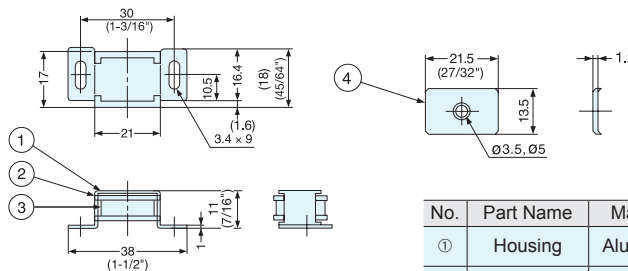
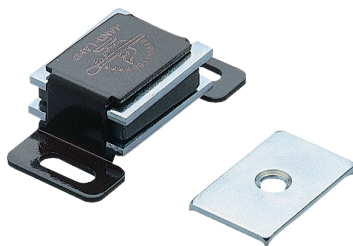
No.	Part Name	Material	Finish/Color
①	Housing	ABS	Black (BLK), Ivory (IVY)
②	Yoke	Steel	Bronze/Nickel
③	Magnet	Ferrite	-
④	Screw	Steel	Bronze/Nickel
⑤	Counterplate		

Item No.	Magnetic Force (kg)	Weight (g)	Box (pcs)	Carton (pcs)
MC-84/IVY	3 (6.6 lbs)	18	50	1000
MC-84/BLK				

MAGNETIC CATCH



SUPER-78



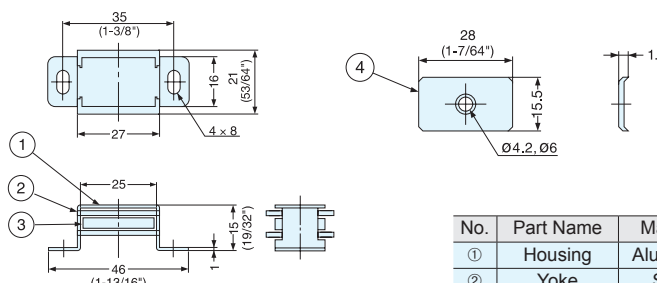
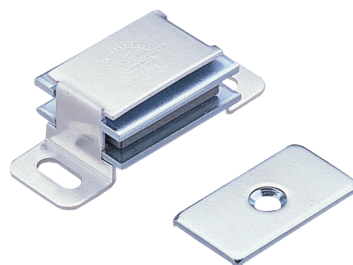
No.	Part Name	Material	Finish/Color
①	Housing	Aluminum	Brown Baked Lacquered
②	Yoke	Steel	Chromate
③	Magnet	Ferrite	-
④	Counterplate	Steel	Chromate

Item No.	Magnetic Force (kg)	Weight (g)	Box (pcs)	Carton (pcs)
SUPER-78	0.8 (1.7 lbs)	17	36	720

MAGNETIC CATCH



SUPER-88



No.	Part Name	Material	Finish/Color
①	Housing	Aluminum	Anodized
②	Yoke	Steel	Chromate
③	Magnet	Ferrite	-
④	Counterplate	Steel	Chromate

Item No.	Magnetic Force (kg)	Weight (g)	Box (pcs)	Carton (pcs)
SUPER-88	1.5 (3.3 lbs)	28.5	24	720