

Archerfield Wetlands Precinct Plan

'The heart of Oxley Creek'



oxley creek
TRANSFORMATION



Contents

Lord Mayor's foreword and Chair's message	1
About Oxley Creek's transformation	2
About Archerfield Wetlands	4
Developing the Precinct Plan	6
Our vision for Archerfield Wetlands	8
Protecting and enhancing our natural assets	9
Connecting people to nature, culture and place	10
Creating a renowned destination for all to enjoy	11
Archerfield Wetlands Concept Plan	12
Balancing conservation areas with recreation	14
Blunder and Hanleys Outlook	16
Archerfield Wetlands Park	20
The Atrium	22
Implementation Plan	26

NOTE

Images and plans are artist's impressions and highly conceptual. They describe general intents for the locations shown. Further planning, detailed design and comprehensive technical investigations will be required in order to determine final uses and physical outcomes.

Lord Mayor's foreword

Oxley Creek Transformation's award-winning Master Plan, released in 2018, articulated a 20-year vision for the Oxley Creek corridor, generating strong community interest and support. Now, it's time to turn that vision into reality.

Archerfield Wetlands is one of six priority projects selected as a focus for investment in the short to medium term. Collectively, these projects will deliver the foundational elements of the future parkland – a world-class green, lifestyle and leisure destination for Brisbane.

Archerfield Wetlands is located in the heart of the corridor. Its transformation into a regional parkland will kickstart change along the creek, with a 20-kilometre 'greenway' connecting it to other priority projects within the corridor, including a new nature-based adventure parkland at Larapinta and a birdwatching destination at Oxley Creek Common.

Residents and local community groups provided valuable feedback, ideas and support during the development of the Precinct Plan, helping to shape the vision and tailor the plan to the local community.

Brisbane City Council is committed to future-proofing Brisbane as a clean and green city, delivering the transformation of Oxley Creek and making our city an even better place to live, work and play.



Adrian Schrinner
Lord Mayor

Chair's message

Hidden alongside one of Brisbane's major industrial precincts, Archerfield Wetlands is a rare gem – 150 hectares of green space, just 12 kilometres from Brisbane's city centre wedged between the Ipswich Motorway, Archerfield Airport and Bowhill Road, Durack. Once a site for wastewater treatment and a meat works factory, Archerfield Wetlands is now being given back to nature for the community to enjoy.

Restoration and transformational action will see this former industrial site and surrounding remnant pastoral land become a major new recreation, education and environmental parkland for the region. Whether it's kayaking down the creek, enjoying a coffee at The Atrium, strolling along the boardwalk, shooting hoops at the youth hub or exploring the adventure play space, there will be something for everyone at the parklands.

Oxley Creek Transformation Pty Ltd is committed to creating a lasting legacy for Brisbane. We thank the community for its valuable insights, feedback and overwhelming support during the consultation period.



Nigel Chamier AM
Chair
Oxley Creek Transformation Pty Ltd

About Oxley Creek's transformation

Oxley Creek is set to become a new citywide destination, a 20-kilometre recreational corridor that complements Brisbane's subtropical, outdoor lifestyle and showcases its natural assets.

The Oxley Creek Transformation Master Plan is guiding the creation of this premier open space for Brisbane. It identifies 13 strategic ideas to revitalise specific locations along the creek and support the regeneration of the whole corridor.

Six of these ideas were selected to become priority projects – a new recreational trail, two regional parklands and a bird sanctuary, plus whole-of-corridor environmental and economic strategies.

Precinct plans translate the projects identified in the Master Plan into a conceptual plan for a specific location.

They draw on detailed planning and technical investigations to set the strategic direction for a site, considering its unique characteristics. Localised strategies must also consider flow-on impacts to the wider catchment.

The Archerfield Wetlands Precinct Plan establishes the priority actions and improvements for the new parkland and will coordinate the efforts of Oxley Creek Transformation, government, the private sector and the community. It is the first step in delivering this priority project.

STEPS TO DELIVERING ARCHERFIELD WETLANDS

Vision

The Oxley Creek corridor, from the Brisbane River at Tennyson to Larapinta, will be transformed into a world-class green, lifestyle and leisure destination, befitting our New World City.

Oxley Creek Transformation Pty Ltd

A wholly-owned subsidiary company of Brisbane City Council established in 2017 to deliver the 20-year vision for the corridor. The *Oxley Creek Transformation Strategic Plan 2017-2020* sets out the company's goals and focus areas.

Oxley Creek Transformation Master Plan

A comprehensive, long-term plan released in 2018 to guide the transformation of the Oxley Creek corridor through a series of goals, strategies, strategic ideas and priority projects.

Priority Projects

Projects identified in the Master Plan for delivery in the short to medium term.

The Greenway

Oxley Creek Common Bird Sanctuary

Nature-based Adventure Parkland

Archerfield Wetlands

Strategic Corridor Restoration Plan

Sustainable Economic Development Strategy

Site planning and key stakeholder consultation.

Draft Precinct Plan released for four-week community and stakeholder feedback period.

Final Precinct Plan released.

Staged implementation, planning and delivery from 2020.

WOODLANDS

Remnant vegetation, dominated by native blue gums (*Eucalyptus tereticornis*) and grey ironbark trees (*Eucalyptus siderophloia*).

WETLANDS

Palustrine wetlands, dominated by bulrushes (*Typha orientalis*) and paperbarks (*Melaleuca quinquenervia*), with some areas of eucalypt woodland.

About Archerfield Wetlands

Wetlands dominated by bulrushes and paperbarks, grassy paddocks where cattle once grazed, scrub and remnant eucalypt forest dotted with the relics of a former industrial age together provide the foundation for an inspiring new regional parkland.

Tales of community and history

Archerfield Wetlands has been shaped by the Indigenous, industrial, working class and migrant histories of surrounding south-western suburbs.

Oxley Creek was once a travel route used by Indigenous people moving between the Brisbane River and ceremonial sites located in the Teviot Range. Fish and mussels from the creek, as well as plants from adjacent wetlands, provided travellers with a steady supply of food.

European convicts logged timber along the creek from 1826 and Bowhill Road, on the site's southern boundary, follows the route of the original penal settlement road, established in the 1820s. This became the main Brisbane to Darling Downs road in the 1850s. Industry has dominated this strip of the creek since the 1890s when the Oxley Bacon Factory was established on the northern area.

The Inala Wastewater Treatment Plant was commissioned in 1958 to support Servicetown (now Inala), established in the 1950s as Brisbane's first master-planned suburb. The plant was decommissioned in 1997 but elements such as brick tanks remain intact at the parkland's southern end.

Archerfield Wetlands today is surrounded by residential communities and industrial precincts, including Archerfield Airport. Community groups and associations are very active with high rates of volunteering, demonstrating a deep connection with the location and a strong sense of community.

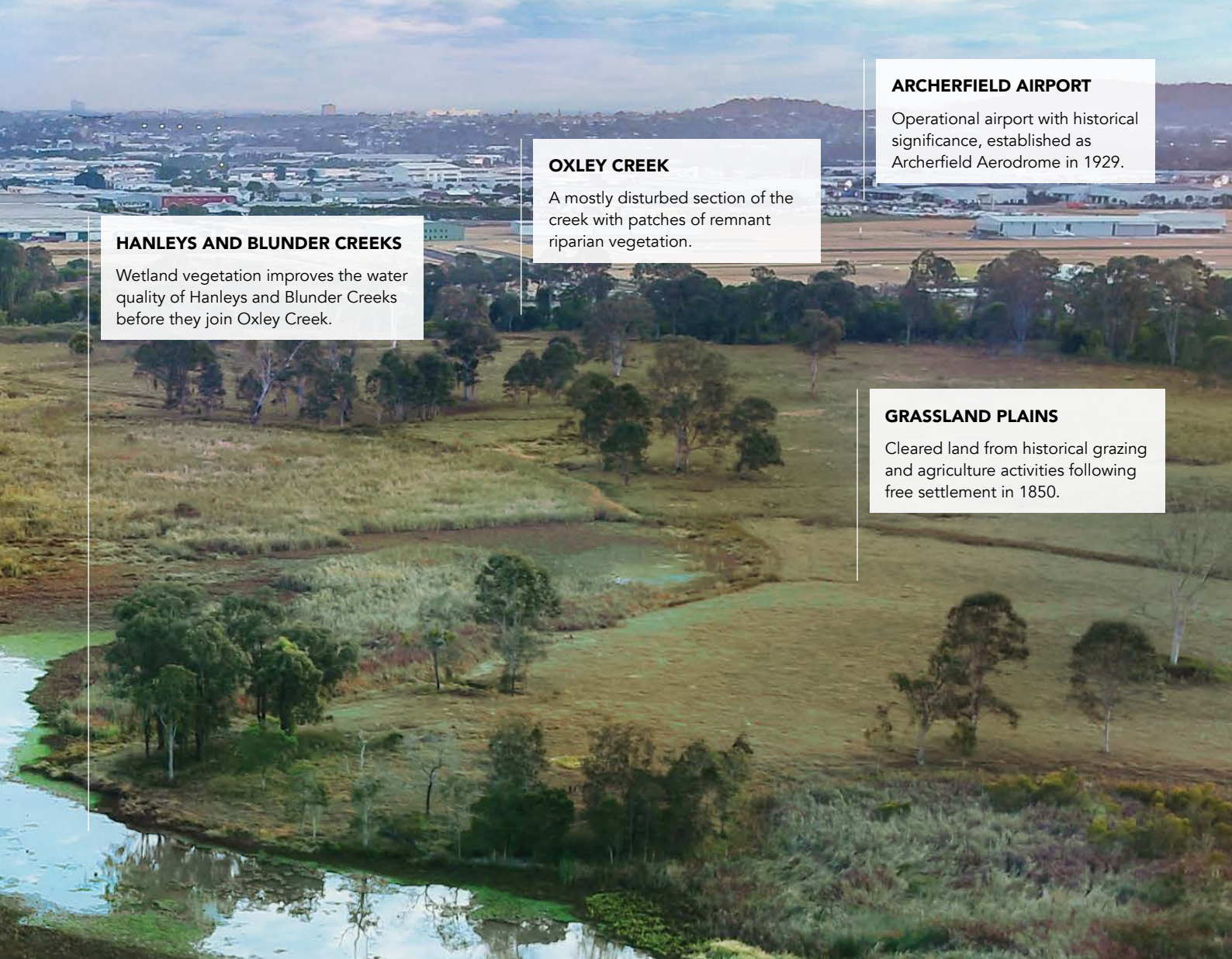
Developing Archerfield Wetlands as a regional parkland presents an opportunity to strengthen community ties by engaging individuals, groups and organisations in joint environmental action, cultural celebration and education.

Of droughts and flooding rains

Archerfield Wetlands, located at the confluence of Hanleys, Blunder and Oxley Creeks, is one of Brisbane's largest floodplain wetland ecosystems. Most of the parkland floods regularly.

Both Hanleys and Blunder Creeks flow directly into the low-lying site, discharging into Oxley Creek at the north of the wetlands. Oxley Creek itself overflows across the floodplain during high tides and flood events.

The wetlands act as a water storage basin during heavy rain to reduce flooding in other parts of the catchment and the Brisbane River. In times of drought, they become a freshwater reservoir. New parkland facilities must be robust and resilient, acknowledging the wetlands' critical role as a floodplain.



ARCHERFIELD AIRPORT
Operational airport with historical significance, established as Archerfield Aerodrome in 1929.

OXLEY CREEK
A mostly disturbed section of the creek with patches of remnant riparian vegetation.

HANLEYS AND BLUNDER CREEKS
Wetland vegetation improves the water quality of Hanleys and Blunder Creeks before they join Oxley Creek.

GRASSLAND PLAINS
Cleared land from historical grazing and agriculture activities following free settlement in 1850.

One of the few areas within the parkland that remains immune to flooding – even a 100-year flood event – is the former wastewater treatment plant located off Bowhill Road. The flood immune land will be carefully planned to capture the opportunity to deliver built form outcomes within the parkland, while other facilities within low-lying areas must be designed to withstand and recover quickly from inundation and weather events.

Nature’s cleansing flows

Land clearing, farming, wastewater treatment and industry have all taken their toll on waterway health. Erosion and creek instability in this sandy catchment, as well as poor water quality, landfill exposure and groundwater contamination, have degraded aquatic and terrestrial habitats.

Wetlands are powerhouses of nature, capable of cleansing water by filtering out pollutants and trapping sediment. Over time, modifications to the wetlands have changed natural water flows at Archerfield Wetlands. Minor water flows now tend to bypass the wetlands, meaning the vegetation communities are shifting from typical wetland species to a drier woodland environment.

Rehabilitating and enhancing the wetlands to redirect water flows and support natural cleansing systems offers the opportunity to reduce pollution and sediment flowing into Oxley Creek.

Forests, woodlands and wetlands

Eucalypt woodlands, paperbark open forest, swamps and a mix of riverine, palustrine and estuarine wetlands

likely covered the parkland in a rich green mosaic prior to European settlement.

What remains today is mostly regrowth and exotic vegetation, with patches of remnant vegetation. Weeds have also invaded many areas, reducing the condition and function of local ecosystems. The site’s pockets of native vegetation, however, have high ecological value both to local and regional ecosystems. They also provide habitat for a diverse array of wildlife and bird species including fairywrens, kingfishers and raptors.

Revegetating disturbed areas of the site, including waterways and wetlands, will improve essential habitat, reduce exotic animals and weeds and support easier fauna movement.

Developing the Precinct Plan

Respecting the unique characteristics of the site, understanding the opportunities and constraints and responding to feedback from the community was an essential part of the precinct planning process.

Characteristics of the site

Archerfield Wetlands represents a unique opportunity to set a benchmark for transforming a highly constrained large-scale site into an environmental asset and recreational destination. Previously host to a wastewater treatment plant and meat works factory, Archerfield Wetlands is now a complex and degraded site, constrained by regular flooding, contamination from past uses and decades of neglect. Despite this, the site still maintains significant ecological value.

The Precinct Plan has been carefully planned to achieve a considered balance between social, environmental and economic outcomes. Design outcomes were developed to respect areas of frequent inundation and environmental significance, while maximising the use of flood immune land to create areas for community use and activity.

Stakeholder and community engagement

A community stakeholder reference group was established to inform the development of the Precinct Plan, offering an effective forum to craft, test and refine ideas and strategies in a workshop setting. Drawing on local stories and knowledge, these workshops brought together a diverse group of people to help shape and strengthen the Precinct Plan.

A draft Precinct Plan was publicly released in June 2019 and was followed by a four-week community consultation and engagement program. More than 150 individual feedback responses were received that demonstrated the community's support of the vision for the site, with 90.3% of survey respondents in agreement with the draft Precinct Plan.

While the draft Precinct Plan received a high level of support from the community, feedback received was used to further enhance and strengthen the Precinct Plan, in particular relating to:

- vehicular access and parking in the northern part of the parkland
- shared path connections to nearby residential areas
- balancing environmental conservation with walking tracks and trails that enable visitors to experience the wetlands
- respecting neighbouring residents and businesses in planning for the site.

Feedback received from the community played an important role in shaping the Precinct Plan and reflects Oxley Creek Transformation's commitment to building relationships and working together with the community and stakeholders.



4-week
community
consultation and
engagement
program.

90.3%
of respondents were
in agreement with the
draft Precinct Plan.

**More than
150** feedback
responses
received.

Face-to-face
engagement with
more than **200**
members of the
community.



- Wetlands of ecological significance
- Remnant vegetation of ecological significance
- Indicative extent of major flood event

FORMER MEAT WORKS SITE



DECOMMISSIONED INALA WASTEWATER TREATMENT PLANT



Our vision for Archerfield Wetlands

**To create
a parkland that inspires
people of all ages to connect
with each other and nature,
care for the environment
and live a healthy, outdoor
lifestyle.**

**Creating
a renowned
destination for all to
enjoy**

*'A world-class parkland
offering unique
experiences'*

**Protecting
and enhancing our
natural assets**

*'A landscape to learn
from, appreciate and
nurture'*

**Connecting
people to nature,
culture and place**

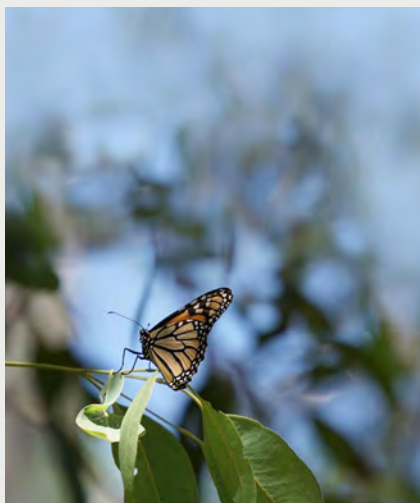
*'Setting the scene for
community wellbeing
and pride'*

Protecting and enhancing our natural assets

'A landscape to learn from, appreciate and nurture'

Archerfield Wetlands' unique ecosystems and functions will be protected and enhanced, creating an environment that locals, visitors and future generations can appreciate, learn from and value.

- Protect and enhance the site's rich biodiversity and regionally significant wetland and waterway systems.
- Rehabilitate the existing wetlands to support the natural function of the floodplain and increase the site's resilience.
- Ensure development, infrastructure and activation solutions within the parkland, including areas of new planting, do not diminish the capacity and function of the floodplain.
- Establish wildlife movement solutions to improve connectivity between the site and surrounding natural habitat areas, as well as along creek corridors.
- Manage pest animals and invasive species, including specialist control of declared pests.
- Develop a bushfire management plan and trail network for effective fire and vegetation management.
- Engage the knowledge and expertise of the local community, researchers and educational institutions to learn from, and in turn, demonstrate the value of our urban wetlands and waterways.
- Educate the community on the role of urban waterways, floodplains and wetlands during climatic cycles of flood and drought.
- Provide engaging visitor experiences with the unique ecology of the wetland environment, showcasing its value.
- Strengthen community ties by uniting individuals and organisations in long-term environmental action to restore the site.
- Create opportunities for outdoor educational experiences for the next generation of environmental stewards, with a focus on hands-on learning and exploration.
- Demonstrate best practice by delivering innovative projects that explore renewable energy, water smart design and green infrastructure solutions.



Connecting people to nature, culture and place

'Setting the scene for community wellbeing and pride'

Archerfield Wetlands will invite people to get outdoors and connect with nature and each other. Parkland facilities will seek to reference and interpret the site and its past.

- Improve community wellbeing by creating a tranquil escape in nature for locals and visitors to discover.
- Create a vibrant mix of community facilities that allow locals and visitors to socialise, connect and participate in activities outdoors.
- Establish a network of walking and cycling trails that enable exploration of the site and the wetlands environment, while maintaining a separation to conservation areas.
- Connect the parkland to existing and future public and active transport networks.
- Provide opportunities for informal sport and exercise such as walking and cycling trails, canoe and kayak facilities, multi-use courts and open green spaces.
- Provide bird hides, trails, wetland boardwalks and elevated viewing platforms to allow for observation of the natural environment.
- Foster a sense of belonging, inclusivity and community pride through cultural and community events and celebrations and facilities and activities for people of all abilities.
- Provide wayfinding signage and other landmark identifiers within the parkland to encourage visitors to explore with confidence.
- Design parkland buildings, pathways and structures to withstand and recover quickly from flood and extreme weather events.
- Develop a flood management strategy to ensure community safety during flood events.



Creating a renowned destination for all to enjoy

'A world-class parkland offering unique experiences'

Archerfield Wetlands will be a key destination at the heart of the Oxley Creek corridor, offering activities and experiences that complement the natural landscape and entice repeat visits from locals and visitors.

- Boost local economic vibrancy by promoting the wetlands as a regional destination and tourist attraction.
- Create and attract festivals and events that activate the parkland and showcase the diversity of the site and local community.
- Establish diverse and memorable experiences for community members of all ages, interests and abilities.
- Connect the site to 'The Greenway', a central spine for movement through the Oxley Creek corridor, linking Archerfield Wetlands to other corridor destinations and experiences.
- Provide facilities and experiences that encourage day-long stays and entice repeat visits.
- Explore partnerships with research groups, institutions, commercial entities and community organisations to enhance the site's experiential and educational opportunities.
- Engage locals and visitors with interpretive educational experiences that focus on Indigenous and European heritage, local flora and fauna, land care and the importance of the wetlands for biodiversity and flood management.
- Deliver best practice subtropical design to ensure innovative high-quality outcomes for built form and parkland infrastructure, consistent with a world-class parkland.
- Provide business opportunities for local growers, makers and vendors through pop-up coffee and retail opportunities, markets, public art, food and cultural events.



Archerfield Wetlands Concept Plan

Archerfield Wetlands will be a place for people, a tranquil escape rich in diverse flora and fauna and a recreational space for all ages. Trails, lookouts and open green spaces will reveal nature's beauty, while new community facilities will inspire interaction, learning and play.

Archerfield Wetlands Park

Refer to 14 15

The southern end of the parkland will become a major gateway to the Oxley Creek corridor and a unique leisure precinct including an industrial-themed playground, multipurpose event space, outdoor amphitheatre and a community, educational and commercial hub.

Creekside Park

Refer to 1 6

Existing local parks at Gleneagles Crescent and Alban Street will merge to become an expansive new Creekside Park with picnic spots, informal open spaces to kick a ball, boardwalks and walking trails to access Oxley Creek. This will reinforce the neighbourhood character and mostly cater for local users.

Vehicle access and parking will be an important consideration for this area of the parkland. Proposed on-street parking along Factory Road will minimise impacts to surrounding residential streets. A pedestrian and cycle path extending from Alban Street will connect to The Greenway and the greater parkland.

Opportunities for additional parking will be explored in the existing industrial area if required, in consultation with the local community.

Blunder and Hanleys Outlook

Refer to 7 8 9

Hanleys and Blunder Creeks enter the wetlands from the south and discharge into Oxley Creek near the new Creekside Park.

Perched on the northern edge of the main wetland, Blunder and Hanleys Outlook takes advantage of its elevated topography, inviting nature lovers, walkers, picnickers and birdwatchers to gain expansive views out across the wetlands.

A wetland boardwalk will allow closer connection with nature and provide access to the Outlook and linkages to the greater parkland.

Wetland recreational trails

Refer to 2 5 10 11 12 18

Picturesque trails will lead adventurers, bird-spotters and joggers through paperbark forests and blue gum woodlands, across still marshes and open wetlands teeming with birdlife, down to waterside boardwalks and up to elevated lookouts with blue sky views.

A range of trail lengths will offer something for everyone, from a short stroll on the Wetlands Discovery Trail, to longer walks that take in Oxley Creek, Blunder and Hanleys Outlook and Creekside Park. Public artwork and interpretive signage will act as wayfinding tools and high notes along the journey.

This network of trails will also connect to The Greenway – a 20-kilometre central spine for moving through the Oxley Creek corridor – so visitors can travel to other destinations along the creek.

Archerfield Wetlands will be a key destination point on the future Oxley Creek Canoe and Kayak Trail, with pontoon facilities provided to allow paddlers to stop off and explore the wetlands.

Restoration and enhancement activities

Refer to 4 8 13 16 17

Environmental restoration and enhancement of the wetlands will both reinstate natural systems and improve the wetlands' function as a water basin, ensuring parkland improvements do not worsen flooding impacts to neighbouring properties or the wider catchment. Wetlands will help manage water quality, while also providing educational experiences and opportunities to enhance the biodiversity values of the site. A designated wetland conservation area will help protect and maintain this important floodplain ecosystem.

Weed management and new planting will encourage natural regeneration of the original ecosystems such as the regionally important blue gum (*Eucalyptus tereticornis*) woodland. Revegetation works will stabilise Oxley Creek's banks and strengthen existing wildlife corridors, increasing the width of riparian vegetation along the creek. Large shade trees will cool pathways and cast dappled light on picnic areas.

A sensitive balance between natural habitat reinstatement and maintaining areas of open grassland will be important to allow for water flow during flood events and ensure the capacity of the floodplain is not diminished. Native grassland areas near the wetlands and waterways will improve the diversity of habitat for different species.

Works to rehabilitate land previously impacted by contamination will be progressively undertaken across the site, with consideration to its intended future use.

NOTE

A level of planning and investigation was undertaken to inform the Concept Plan. Further detailed investigation will be undertaken during detailed planning and design.

- 1 Local pedestrian entry: Factory Road/Alban Street
- 2 Ipswich Motorway underpass for pedestrians and cyclists
- 3 Multipurpose open space
- 4 Vegetation management consistent with Archerfield Airport operations
- 5 Canoe and kayak destination point
- 6 Creekside Park
- 7 Viewing point and wetland boardwalk connection
- 8 Native grassland
- 9 Blunder and Hanleys Outlook
- 10 The Greenway
- 11 Shared path link to The Greenway
- 12 Bird hides, lookouts and picnic nodes
- 13 Wetland conservation area
- 14 Archerfield Wetlands Park
- 15 Main site entry: Bowhill Road
- 16 Wetlands for stormwater treatment
- 17 Weed and vegetation management
- 18 Wetlands Discovery Trail
- Wetland conservation area boundary



Balancing conservation areas with recreation

Archerfield Wetlands will achieve a balance between areas of natural conservation and the ongoing need for community access to open green space and recreational activities.

Important wetland ecosystems, waterway corridors and remnant vegetation areas will be protected for their biodiversity, habitat and water quality values, with parkland development located outside these areas. The vast majority of the site will respect the natural landscape and wetlands environment, with 65% of

the site designated for conservation and vegetation management, limiting access to allow for the natural processes of Archerfield Wetlands to thrive.

A recreational trail network will define where visitors can move through the site, providing for immersive and engaging recreational experiences,

while maintaining adequate separation from conservation areas.

65%
of the site
designated for
conservation
and vegetation
management.

60ha
wetland
conservation
area.

3km
of riparian
vegetation
management and
restoration.

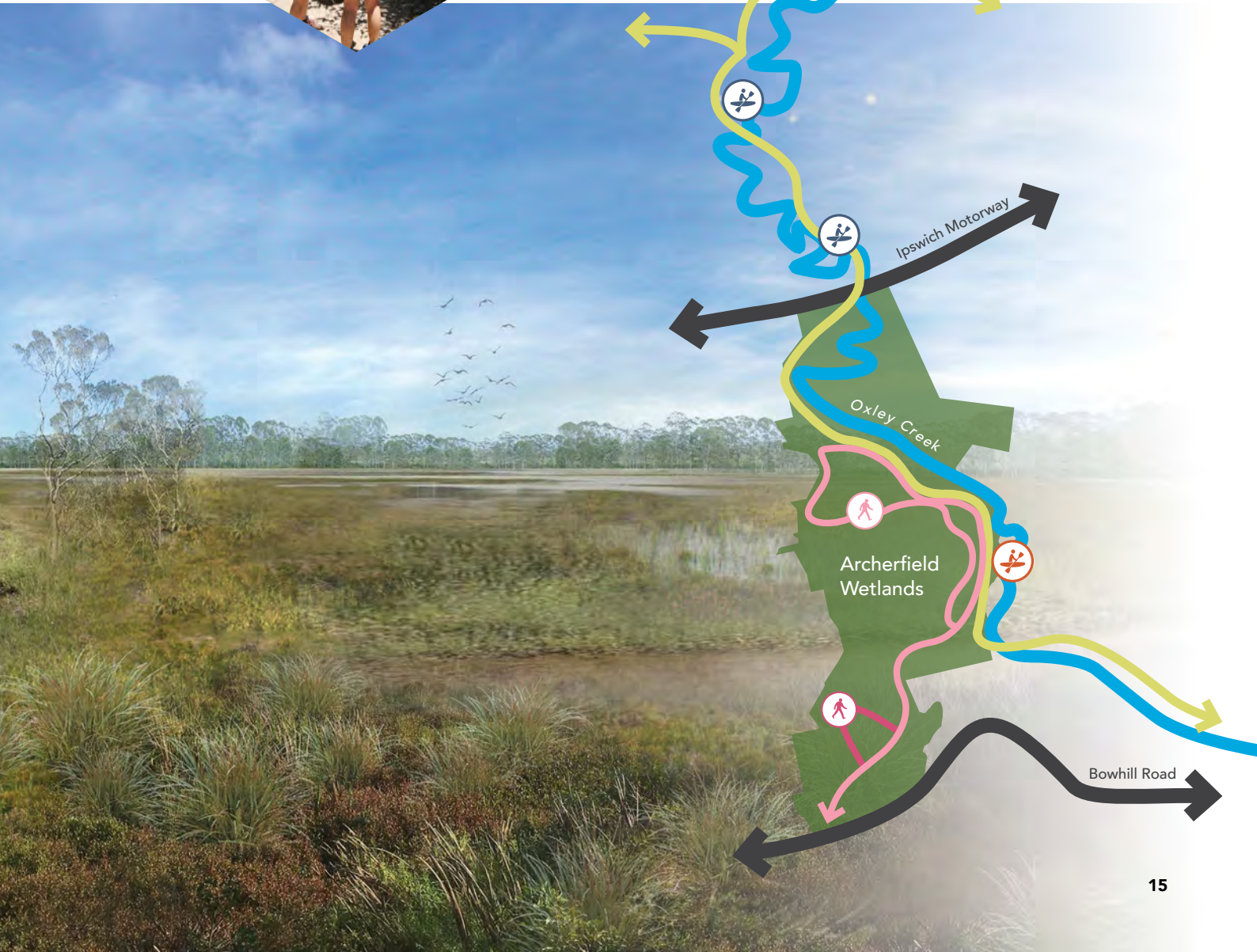
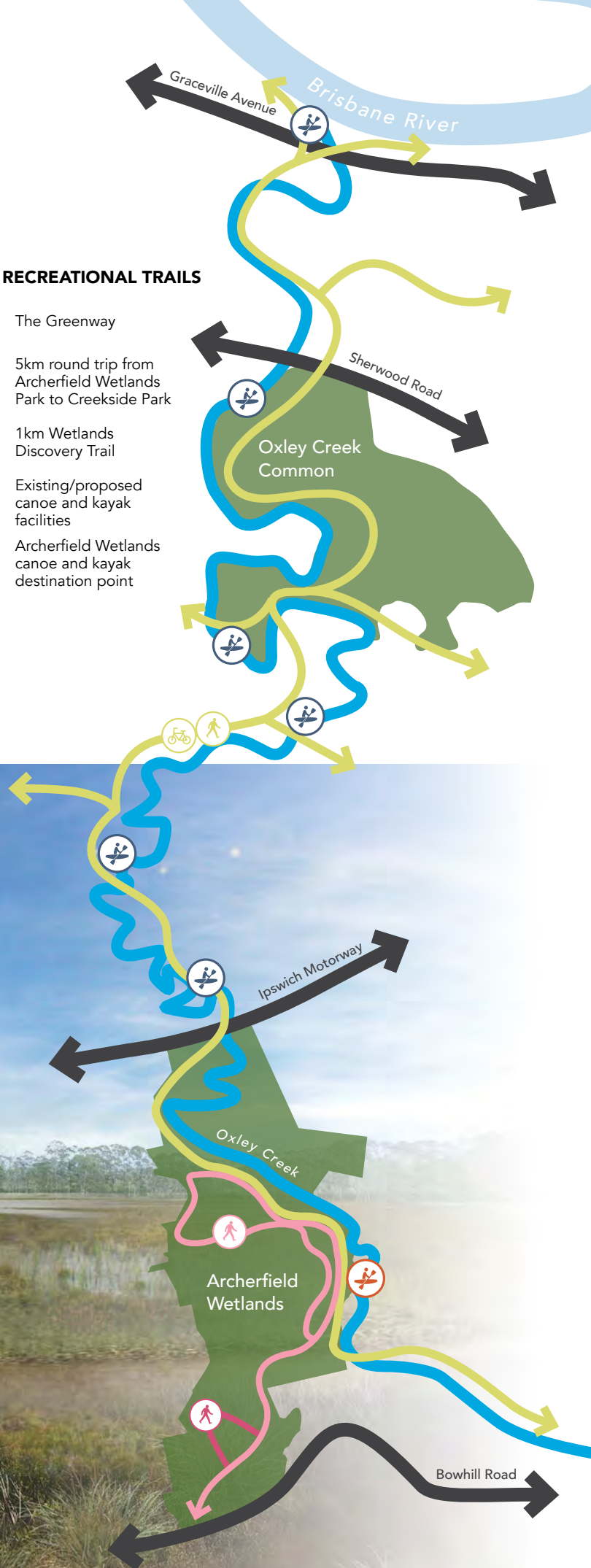
Artist's impression of the Wetlands Discovery Trail.





WETLAND RECREATIONAL TRAILS

-  The Greenway
-  5km round trip from Archerfield Wetlands Park to Creekside Park
-  1km Wetlands Discovery Trail
-  Existing/proposed canoe and kayak facilities
-  Archerfield Wetlands canoe and kayak destination point



Blunder and Hanleys Outlook

Artist's impression of view across the wetlands to Blunder and Hanleys Outlook.

**WEED AND VEGETATION
MANAGEMENT**

OXLEY CREEK

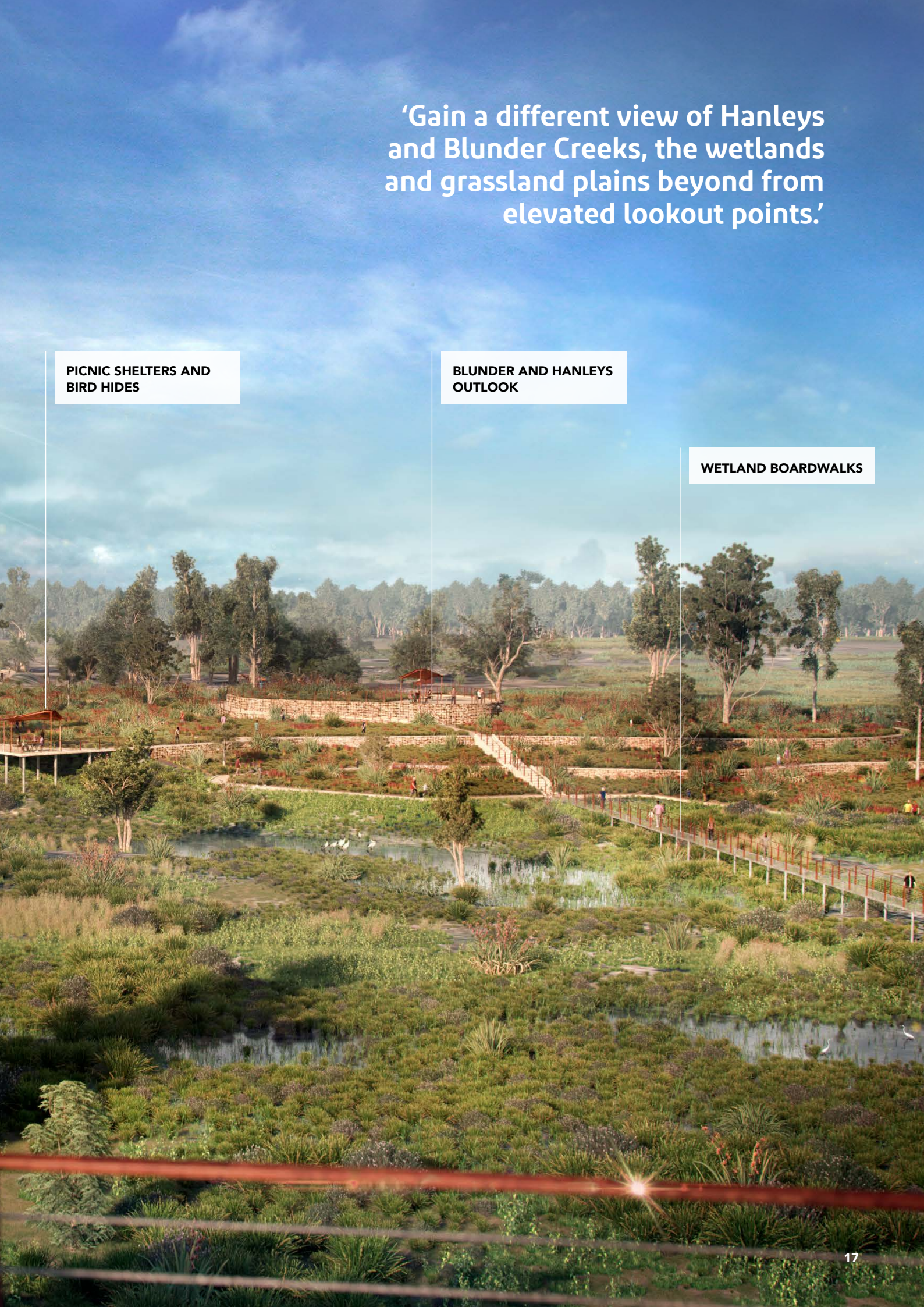
**SHARED PATHWAYS
CONNECT TO THE
GREENWAY**

'Gain a different view of Hanleys and Blunder Creeks, the wetlands and grassland plains beyond from elevated lookout points.'

PICNIC SHELTERS AND BIRD HIDES

BLUNDER AND HANLEYS OUTLOOK

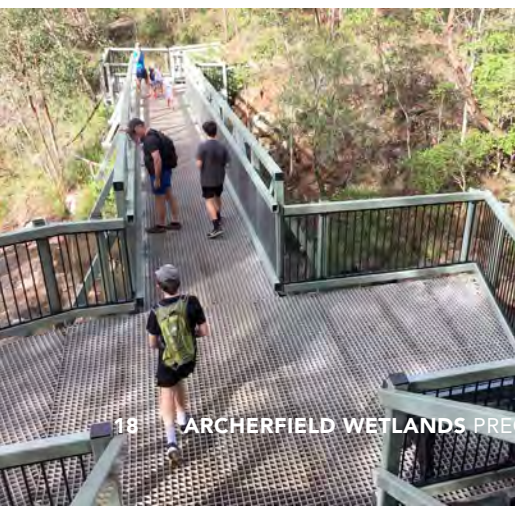
WETLAND BOARDWALKS



Paddle upstream
on the Oxley Creek Canoe
and Kayak Trail and stop at
Archerfield Wetlands for a
picnic in a bushland setting by
the creek.

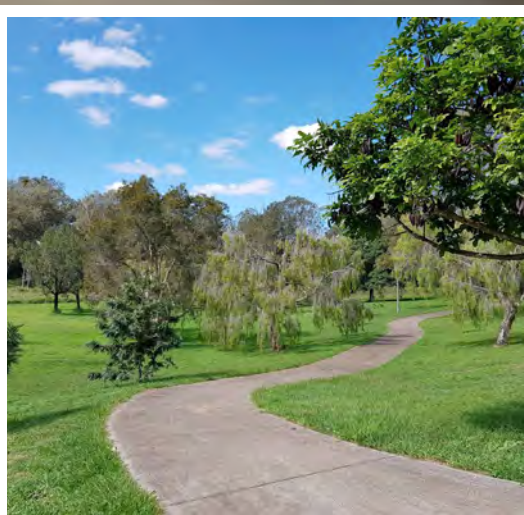


Artist's impression of canoe
and kayak destination point.





Trek north along The Greenway to connect to Oxley Creek Common.



Archerfield Wetlands Park

The decommissioned Inala Wastewater Treatment Plant will be transformed into a major park gateway into the Oxley Creek corridor. Archerfield Wetlands Park will become a regional destination, featuring community meeting spaces, an adventure play space, youth hub, event lawn, amphitheatre and premises for the Oxley Creek Catchment Association.

The Atrium

Refer to 2 3 4 5 6

The Atrium will be a place for education, gathering, learning and relaxation. With an iconic entry through the repurposed former treatment plant's brick tanks, visitors will encounter a series of community focused facilities clustered under one, large roof. Blurring indoors with outdoors, The Atrium's flexible spaces will host events, cultural celebrations, functions, artwork and interpretive displays. A large lookout deck along the eastern edge will offer a tranquil outlook over the wetlands.

The unique environment of The Atrium offers the opportunity to draw synergetic activities into the parkland in the future. Taking advantage of the flood immune land at this location, provision has been made to incorporate additional built form outcomes. Future outcomes may include research, education, commercial or community facilities, which will be driven by the changing needs of the parkland and demand.

Facilities will also be provided for the local catchment group, Oxley Creek Catchment Association, who tirelessly dedicate their efforts to protecting and enhancing the Oxley Creek catchment through partnerships, advocacy, education and contributing to catchment management. The presence of Oxley Creek Catchment Association at Archerfield Wetlands will complement and support the parkland.

Adventure play space and youth hub

Refer to 13 14

A post-industrial playground will greet visitors as they enter the park, its pipes, tanks and gangways providing a visual link to the past and an imaginative setting for outdoor adventure play for all abilities and ages. Opportunities for water play will also be explored to create a unique attraction that draws families from across the region.

A youth hub on the lower terrace will include features such as a multi-use games court and a sheltered hangout zone.

Wetlands Discovery Trail

Refer to 7

A short one-kilometre boardwalk trail, starting from Archerfield Wetlands Park, will provide an immersive experience through the southern edge of the wetland conservation area.

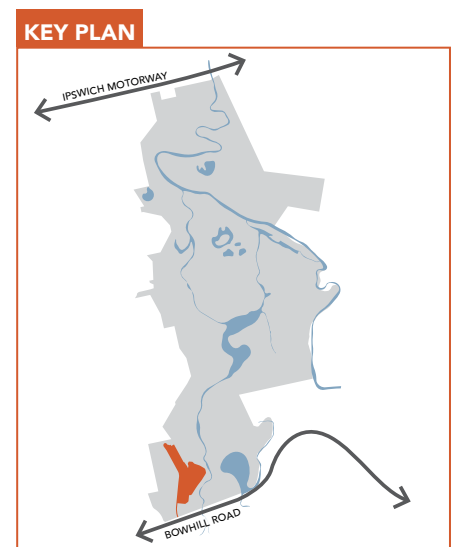
Interpretive educational experiences that focus on Indigenous cultural heritage and the importance of the wetlands for biodiversity and flood management will engage visitors as they make their way along the trail.

Outdoor spaces, events and activation

Refer to 8 9 10

A calendar of events celebrating the natural environment and local culture will animate the park from pop-up exhibitions to regular markets, annual festivals, practical workshops, concerts and performances. Flexible, multipurpose indoor and outdoor spaces will adapt to suit needs.

The event lawn and amphitheatre will provide the setting for programmed community and cultural events and double as a large, open space for informal play, sport and relaxation. The brick tanks and other spaces in The Atrium will offer an inspired backdrop for art installations that celebrate local artists and the site's unique history and landscape.





- 1 Access road
- 2 Facilities for Oxley Creek Catchment Association
- 3 Provision for future uses such as research, education, commercial or community functions
- 4 Multipurpose community space and public amenities
- 5 Wetlands lookout deck
- 6 Repurposed brick tanks
- 7 Wetlands Discovery Trail
- 8 Event lawn
- 9 Performance stage
- 10 Informal amphitheatre
- 11 Shared path link to The Greenway and walking trails
- 12 Picnic shelters
- 13 Adventure play space
- 14 Youth hub
- 15 Car park
- 16 Entry statement and signage
- 17 Main site entry: Bowhill Road
- Transmission easement

Hanley's Creek

BOWHILL ROAD



The Atrium

Artist's impression of The Atrium, repurposed brick tanks and wetlands lookout deck.



‘Iconic brick tanks reference the site’s former use, telling tales of the cultural landscape. A roof canopy floats above, providing shade for open-air spaces and places to learn, gather and connect.’





Artist's impression of the adventure play space, youth hub, event lawn and informal amphitheatre.





Take the kids to the industrial-themed playground, play basketball at the multi-use games area, participate in a workshop or enjoy a performance at the amphitheatre.



Implementation Plan

Archerfield Wetlands has the potential to become an environmental asset and recreational destination for the city. Achieving this requires strong partnerships and long-term commitment from government, the private sector and the community.

Humble beginnings

Early investments will aim to encourage local residents from Durack, Archerfield, Willawong, Oxley, Acacia Ridge and Inala to use and enjoy the parkland. Tables and barbecues for family picnics, trails for evening walks and open space for friendly footy matches will draw residents from nearby suburbs down to the creek on both weekdays and weekends. Creating a space locals love will, in turn, attract visitors from further afield as the parkland grows and evolves.

Powerful partnerships

Successful delivery of the Archerfield Wetlands vision requires Oxley Creek Transformation to partner with community members and groups as environmental stewards of this unique asset. Community custodianship will translate into passionate support for planting, weed management and data collection, passive surveillance by neighbours and visitors and inspired ideas for the parkland's ongoing evolution.

Growing and evolving

The future development of Archerfield Wetlands will be an evolutionary process that considers demand and use of the site. Coffee vans, pop-up events, art installations and other temporary parkland elements will mean less upfront investment and allow testing of ideas to guide decision making about permanent infrastructure and programming. Oxley Creek Transformation will also respond to market-led proposals as they arise.

Building the bigger picture

Archerfield Wetlands will be a recreational destination where environmental outcomes are as important as play. Funding for environmental rehabilitation and research will be sought from public and private grants, while collaborative ventures and partnerships will help deliver outcomes. Ultimately, Archerfield Wetlands will feature permanent built elements, research and commercial operations, enhanced parklands and wetlands, recreational spaces, tracks and trails, bird hides, boardwalks and lookouts. This will translate into a diverse collection of experiences and activities and establish Archerfield Wetlands as both a local parkland and a regional destination.

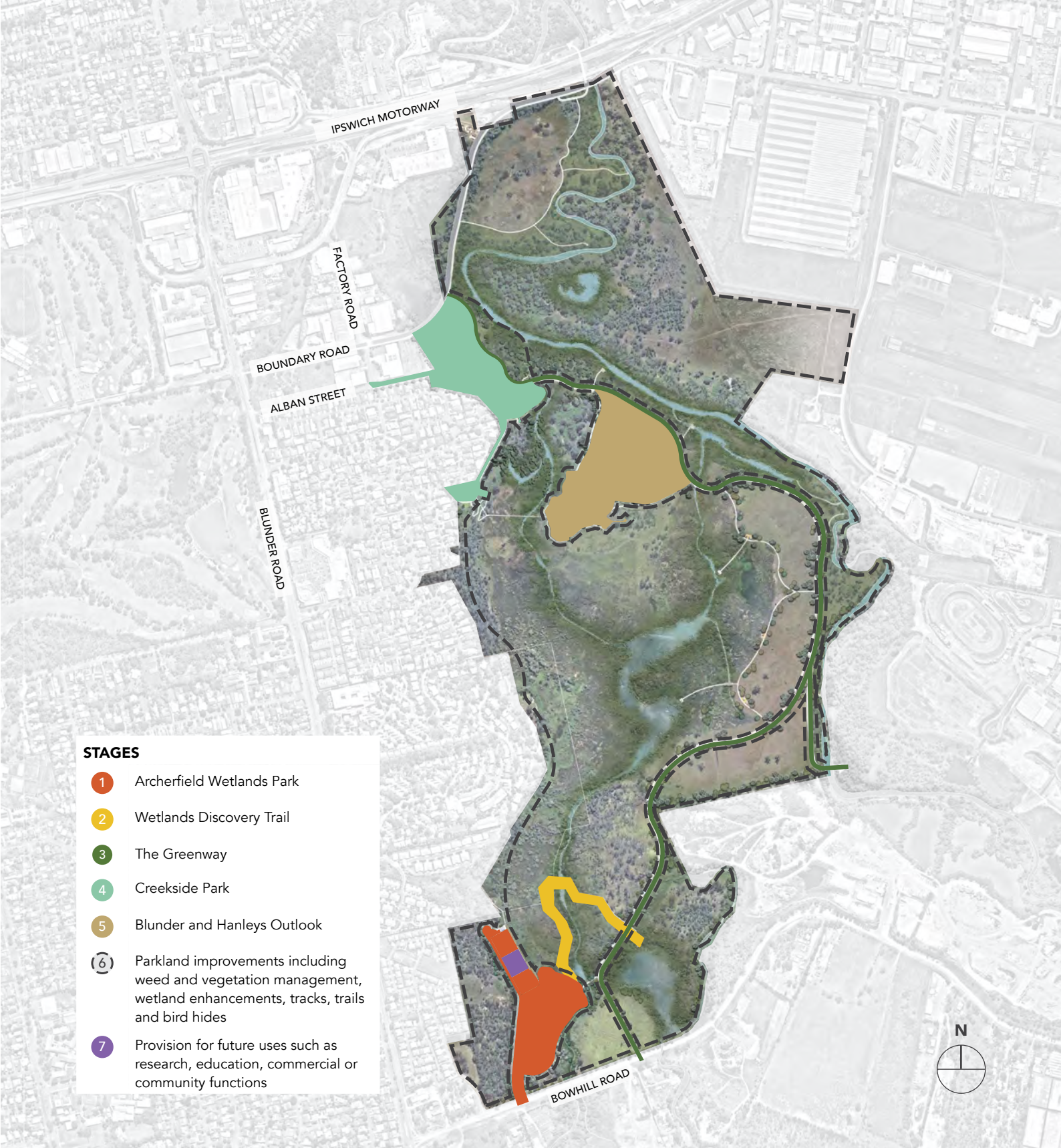
Ongoing sustainability

Archerfield Wetlands will be resilient, with low-maintenance assets able to withstand extreme weather events and flooding and recover quickly. Best practice water smart design, such as stormwater harvesting for irrigation, green infrastructure and renewable energy will be adopted to support the sustainable operation of the parkland.

Oxley Creek Transformation will seek opportunities to generate revenue and funding for the parklands' ongoing management and maintenance. Partnerships with volunteers and community groups such as the Oxley Creek Catchment Association will assist in the site's restoration and revegetation.

Staged planning and delivery

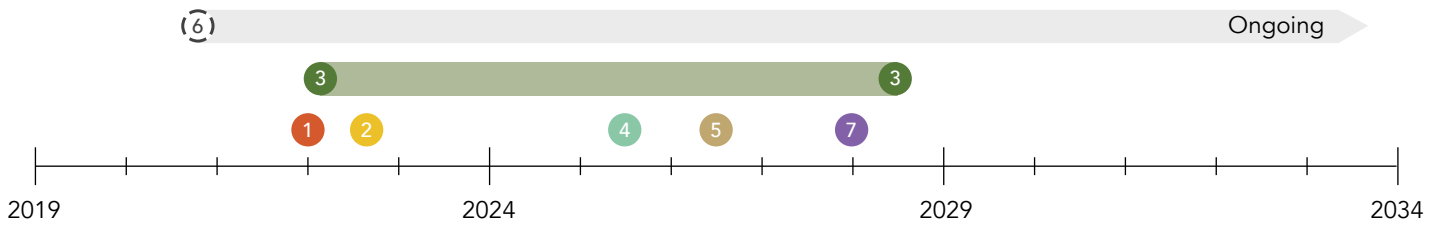
The delivery of the parkland will be undertaken in stages to allow for the natural evolution of the parkland, responding to changing demand and use. Further planning, detailed design and technical studies will be required in order to determine final uses and ensure physical outcomes respond to the site's characteristics.



STAGES

- 1 Archerfield Wetlands Park
- 2 Wetlands Discovery Trail
- 3 The Greenway
- 4 Creekside Park
- 5 Blunder and Hanleys Outlook
- 6 Parkland improvements including weed and vegetation management, wetland enhancements, tracks, trails and bird hides
- 7 Provision for future uses such as research, education, commercial or community functions

INDICATIVE DELIVERY TIMELINE



Stay in touch

Find out more about Oxley Creek Transformation and sign up to our mailing list by visiting www.oxleycreek.com.au

You can also stay informed by following us on social media
(#ouroxleycreek)



oxley creek
TRANSFORMATION