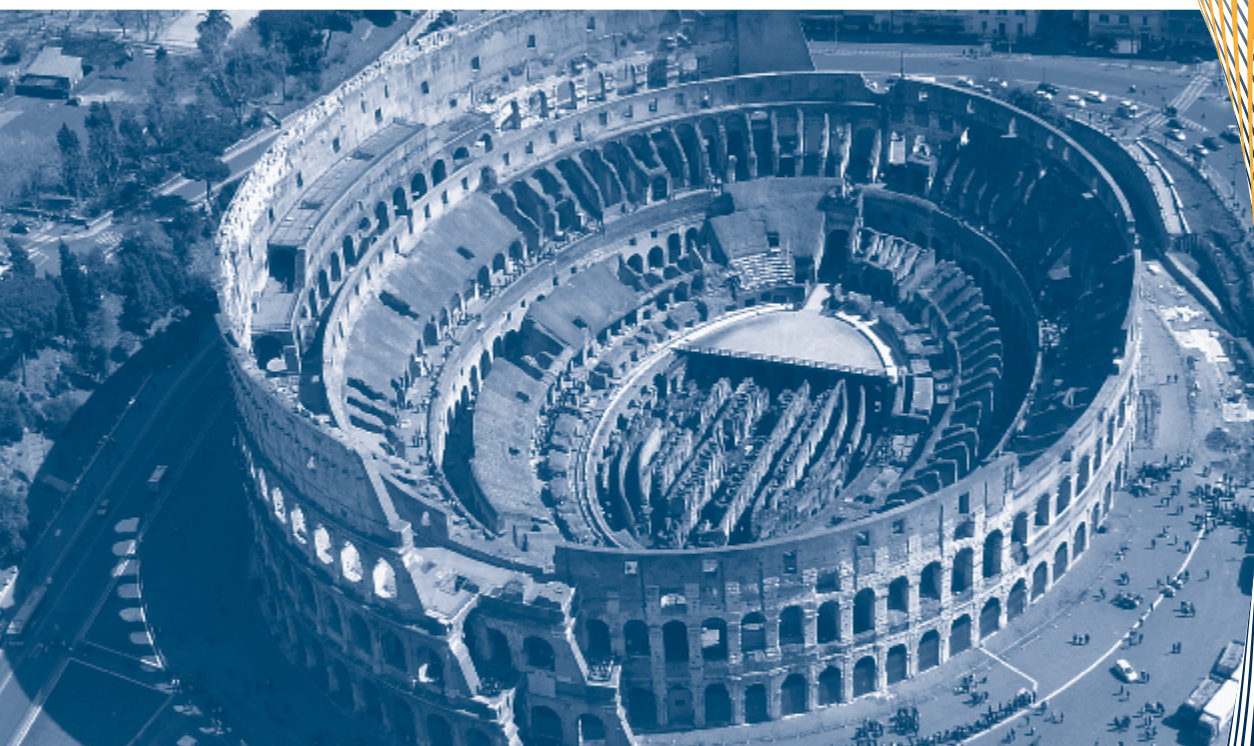


PARA  
TEMPOTEST®  
ITALIAN PERFORMANCE FABRICS



THE VIEW FROM THE SUN  
MADE IN ITALY



## WARRANTY

1. The warranty is valid for 10 years on Tempotest acrylic fabrics, 5 years on Tempotest STARLIGHT® FR, and 3 years on Tempotest STARSSCREEN® starting from the date of purchase.
2. The warranty exclusively covers the abnormal loss of color and/or strength due to normal exposure to the action of sun, salinity, and general atmospheric agents.
3. The warranty covers Tempotest fabrics exclusively. Any additional costs of manufacturing and installation, which could be requested by the installer or by the retailer, are not covered by the warranty.
4. The warranty does not cover damage due to circumstances beyond one's control, e.g. fire, flood, bird excrements, or air pollution. Also, the warranty excludes damage caused by mechanical actions or fraudulent actions. In particular, the formation of micro-holes in the cover, due to the mechanical action of opening and closing of an awning, is excluded from the warranty. Subtle differences in appearance of color saturation may occur over time resulting from atmospheric agents and pollution. This does not compromise the chemical, physical, and technical features of Tempotest fabrics.
5. Tempotest fabrics are components of a finished product. The warranty must be claimed against the retailer or installer from whom the finished products are purchased.
6. The warranty is not valid in the case of improper use and/or improper installation.
7. The responsibility of Parà is expressly limited to this warranty. Parà reserves the right to inspect the fabric that is the object of the claim and ask for proof of purchase.

In the case of an acknowledged defect in the Tempotest acrylic fabric within the 10-year warranty period, Parà will supply fabric equivalent to 100% of the value of the defective fabric up through the 8th year from the purchase date. In the 9th year, Parà will supply this fabric with a 30% discount. In the 10th year, Parà will supply this fabric with a 15% discount.

In the case of an acknowledged defect in the Tempotest Starlight FR fabric within the 5-year warranty period, Parà will supply fabric equivalent to 100% of the value of the defective fabric up through the 3rd year from the purchase date. In the 4th year, Parà will supply this fabric with a 50% discount. In the 5th year, Parà will supply this fabric with a 30% discount.

In the case of an acknowledged defect in the Tempotest Starscreen fabric within the 3-year warranty period, Parà will supply fabric equivalent to 100% of the value of the defective fabric.



## PARÀ GROUP

### A HISTORY OF ITALIAN EXCELLENCE

The Parà Industrial Group was founded in 1921. For over 3 generations, this family-owned company has been producing premium, high-performance textiles used in a variety of applications including sun protection, marine, and indoor/outdoor furnishing and accessories.

Parà has grown into a globally recognized brand, thanks in part to its hallmark Italian style. This, along with a continuous commitment to innovation and producing only the highest quality products, has established Parà as a key player in the international market.

The Parà Group has earned the reputation for manufacturing some of the industry's highest quality textiles. **Made in Italy** with a strong focus on every detail - from the spinning and weaving stages, through the printing and dyeing, to the coating and finishing line - the Parà Group has become synonymous with high-end quality, style, and service.



## TEFLON EXTREME® BY PARÀ

## SANITIZED

Parà has always treated Tempotest fabrics with Teflon™ Fabric Protector. This ensures a product with outstanding performance while maintaining minimum impact on the environment. Teflon has been providing reliable protection performance for millions of satisfied customers for over 80 years.

Parà developed a higher performing formulation of fluorocarbon resins with 6 carbon atoms (a formulation known as C6) instead of the older and more commonly used C8 technology. This upgrade allowed Parà to no longer rely on perfluorooctanoic acid (PFOA), or any of its derivatives (PFOS), which resulted in a production process with a far lower environmental impact.

The partnership between Parà and Chemours™ puts science to work for our customers. Teflon EXTREME® by Parà Fabric Protector was developed to reduce the environmental impact, while helping extend the life of the fabric. Teflon fabric protection equates to fewer required washing cycles, less water use, and lower temperatures needed for effectively washing and drying. This results in less energy consumption overall and is therefore less harmful to the planet. Parà prides itself on a continuous commitment to developing and adopting more sustainable production methods.

During tests, products treated with Teflon Extreme showed a reduced need to clean stains from the fabrics. The dirt had a tendency to form drops that simply ran off the fabric. Treated fabrics allowed for easier cleaning and removal of stains while also drying more efficiently when compared to fabrics not treated with Teflon Extreme.

Expect a lot! SANITIZED® AG is a leading global manufacturer of products for anti-microbial protection for textile and plastic materials. For over 50 years, this Swiss company has developed special anti-microbial hygienic solutions using the latest technologies.

SANITIZED is committed to continually researching its products. They only use active ingredients and components that have been registered as anti-microbial, and therefore have been subjected to strict controls against the risk of harm to human health and the environment.

In order to avoid the formation of mold due to the accumulation and stagnation of water on the fabric, all Tempotest Coated fabrics are treated by Parà with a special SANITIZED finishing.



TEFLON™



NO TEFLON™

TEFLON™ is a registered trademark of Chemours used under license by Parà S.p.A.





# SOLIDS, TEXTURES, & TWEEDS



## THE VIEW FROM THE SUN

Seeing things from the point of view of the sun can allow us to reach a broader perspective. The frequencies of sunlight contain information for our health, wealth, and evolution. The sun is a gateway through which the universe communicates using a particular language: the code of light. Through the code of light, Parà presents our new Tempotest Collection which reflects a reinterpretation of colored fabrics, textures, and patterns that reveal the secrets of a fresh perspective.

| TECHNICAL FEATURES   |   |
|--|---|
| Composition  | Width (UNI EN 1773/98)  |
| 100% solution-dyed acrylic fiber   | 47"<br>60"<br>80"   |
| Weight (UNI EN 5114/82)  | Water Column (UNI EN 20811)   |
| 8.8 oz/yd <sup>2</sup> (+/- 5%)<br> > 9.7 oz/yd <sup>2</sup> (+/- 5%) | ≥ 38 cm<br> > 100 cm |

Tempotest fabric meets all requirements of paragraph 15.2 of UNI EN 13561:2009. The data corresponds to the material at the moment this technical data sheet was printed. Parà reserves the right to make changes to improve the product technologically. The updated technical data is available at [tempotestusa.com](http://tempotestusa.com).



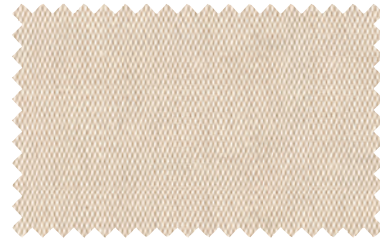
General warranty terms on [tempotestusa.com](http://tempotestusa.com)



White  
 T15-47 | T15-60 | T15-60C



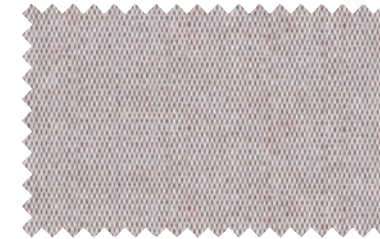
Snow  
 T15/93-47 | T15/93-60 | T15/93-60C



Latte  
 T15/52-47 | T15/52-60



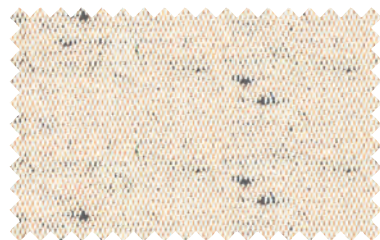
Vanilla  
 T929-47



Antique Beige  
 T88-47



Greige  
 T1304-47



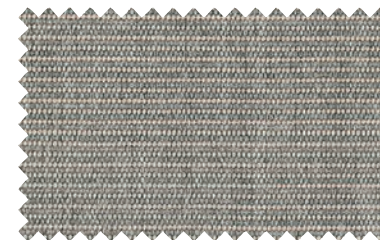
Crest Cement  
 T4015/91-47



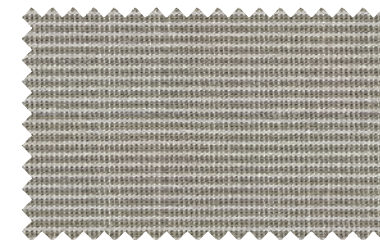
Buttercream  
 T93-47



Cream  
 T15/1-47 | T15/1-60 | T15/1-60C



Seagrass  
 T5407/94-47  
 NEW



Driftwood Tweed  
 T407/926-47 | T407/926-60  
 NEW WIDTH



Driftwood  
 T926-47 | T926-60



Pearl  
 T151/929-47



Linen  
 T4215/15-47



Beige  
 T52-47 | T52-60 | T52-60C



Beige Tweed  
 T407/52-60



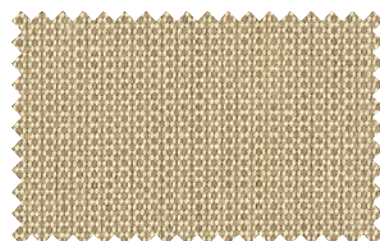
Cappuccino  
 T102-47 | T102-60



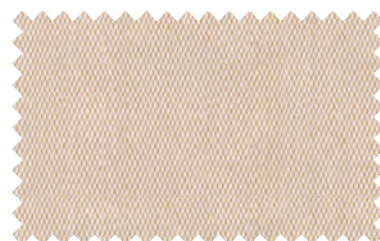
Tan  
 T14-47



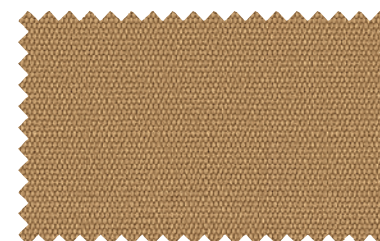
Durmast  
 T782/14-47



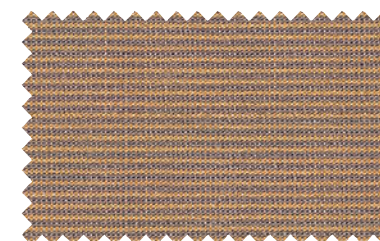
Dune Tweed  
 T873/151-47  
 NEW



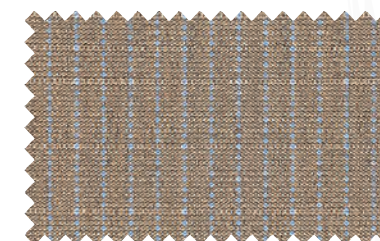
Oyster  
 T15/14-47 | T15/14-60 | T15/14-60C



Toast  
 T101-47 | T101-60



Noisette Tweed  
 T407/14-47



Toffee Gessato  
 T1330/508-47  
 NEW



The technical values are available on [tempotestusa.com](http://tempotestusa.com) website or by scanning the QR code

Part #-47 = 47" | Part #-60 = 60" | Part #-60C = coated 60" | Part #-80 = 80" | [P] = Premium color





Toffee  
 T106-47 | T106-60



Mudslide  
 T5406/94-47  
 NEW



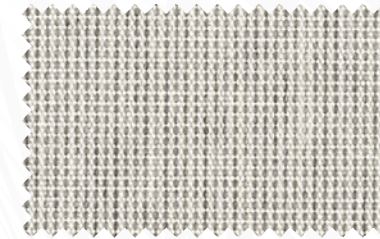
Bisquit Tweed  
 T986/106-47



Chocolate  
 T81-47 | T81-60



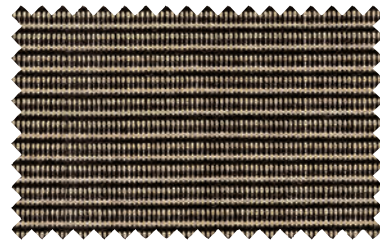
Mist  
 T15/79-47 | T15/79-60 | T15/79-60C



Ice Tweed  
 T986/15-47



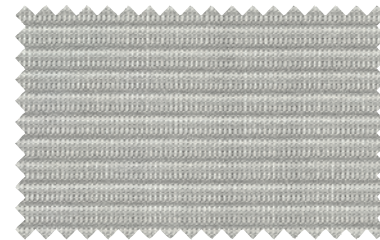
Coriander  
 T5406/52-47  
 NEW



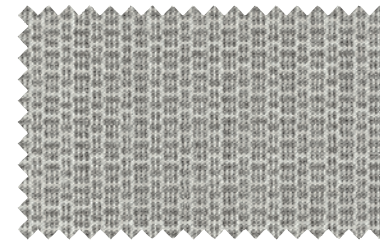
Sesame  
 T5407/52-47  
 NEW



Brown  
 T18-47



Silk Grey  
 T5407/15-47  
 NEW



Ice Grey  
 T5406/15-47  
 NEW



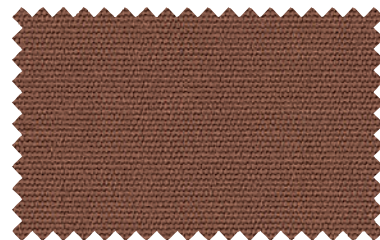
Silver  
 T79-47 | T79-60  
 NEW WIDTH



Sequoia  
 T57/1-47  
 NEW



Coffee  
 T57-47



Henna  
 T57/54-47  
 NEW



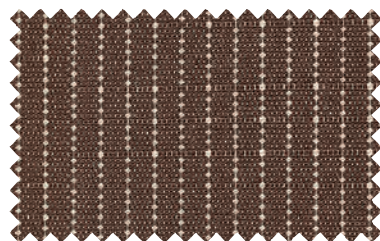
Grey Tweed  
 T407/94-47



Pebble  
 T727/15-47



Lead  
 T94/15-47



Hazelnut Gessato  
 T1330/509-47  
 NEW



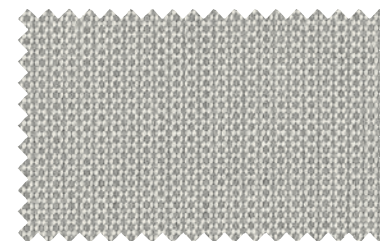
Hazelnut  
 T930-47



Bisque Tweed  
 T873/2-47



Grey  
 T94-60 | T94-60C



Glacier Tweed  
 T873/15-47  
 NEW



Ash Gessato  
 T1330/505-47  
 NEW



The technical values are available on [tempotestusa.com](http://tempotestusa.com) website or by scanning the QR code

Part #-47 = 47" | Part #-60 = 60" | Part #-60C = coated 60" | Part #-80 = 80" | [P] = Premium color

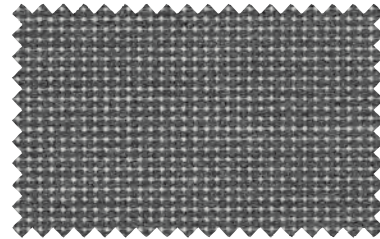




Pebble Tweed  
 T986/727-47



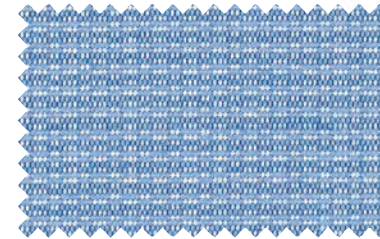
Metal  
 T727/71-47



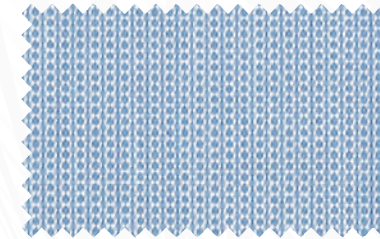
Carbon Tweed  
 T986/107-47  
 NEW



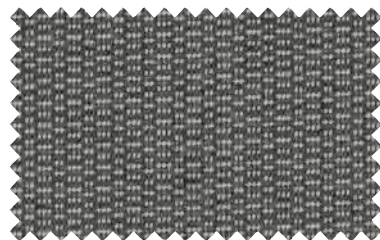
Lavender  
 T74/15-47



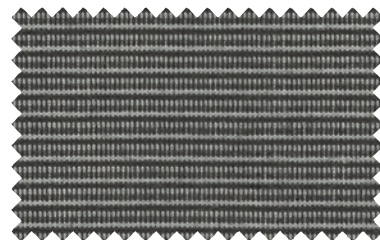
Sky Blue  
 T5406/17-47  
 NEW



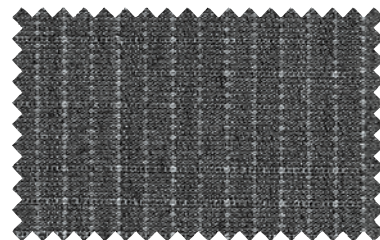
Skyway Tweed  
 T873/17-47  
 NEW



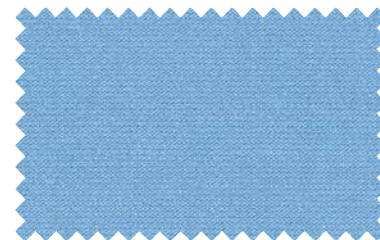
Carbon Fiber  
 T5406/107-47  
 NEW



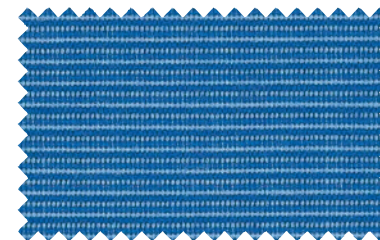
Turbulence  
 T5407/107-47  
 NEW



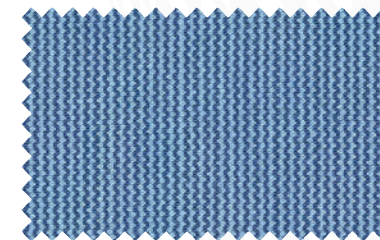
Carbon Gessato  
 T1330/512-47  
 NEW



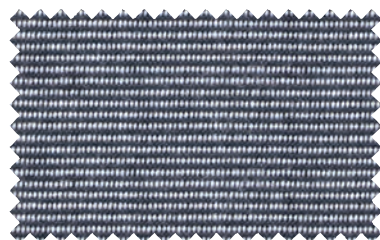
Mid Blue  
 T17/15-47



Skydiver  
 T5407/17-47  
 NEW



Wave  
 T782/87-47



Silver Tweed  
 T407/79-47 | T407/79-60



Carbon  
 T107-47



Charcoal  
 T97-47 | T97-60



Powder Blue  
 T21-47 | T21-60 | T21-60C



Spa  
 T71/15-47



Shoreline  
 T22-47 | T22-60  
 NEW WIDTH



Eggplant  
 T97/84-47



Midnight Blue  
 T97/13-47



Plum  
 T91-47



Bluette  
 T77-47



Pacific Blue  
 T416-47 | T416-60 | T416-60C



Prussian Blue  
 T13-47



The technical values are available on [tempotestusa.com](http://tempotestusa.com) website or by scanning the QR code

Part #-47 = 47" | Part #-60 = 60" | Part #-60C = coated 60" | Part #-80 = 80" | [P] = Premium color





Intense Blue  
 T414-60



Cobalt  
 T10-47



Royal Blue Tweed  
 T407/13-47 | T407/13-60



Forest Green  
 T5-47 | T5-60 | T5-60C | T5-80  
 NEW WIDTH



Forest Tweed  
 T407/6-47 | T407/6-60



Jungle  
 T97/8-47



Sapphire  
 T87-47



Air Force Blue  
 T87/8-47  
 NEW



Navy  
 T75-47 | T75-60 | T75-60C



Musk Tweed  
 T407/3-47



Soccer Field  
 T62/15-47



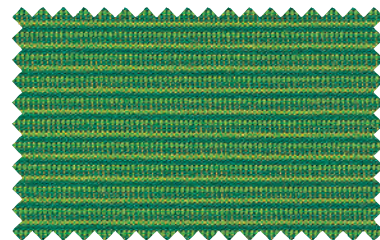
Olive  
 T7-47



Indigo  
 T92-47 | T92-60 | T92-60C



Lime  
 T16-47



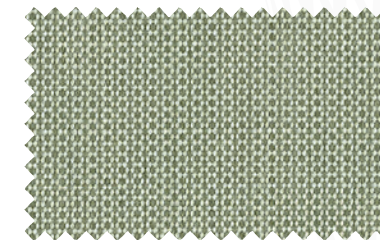
Irish Green  
 T5407/6-47  
 NEW



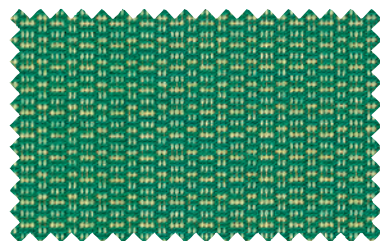
Chive  
 T7/14-47  
 NEW



Sage Tweed  
 T407/16-47



Lettuce Tweed  
 T873/78-47  
 NEW



Bright Green  
 T5406/6-47  
 NEW



Pool Green  
 T6-47



Pine Green  
 T8-47



Pistachio  
 T1302-47



Coral Pink  
 T20-47



Complexion  
 T26/15-47

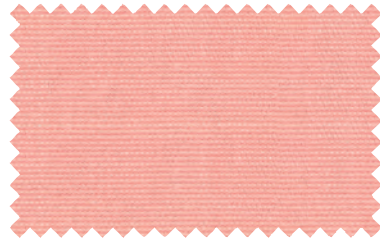


The technical values are available on [tempotestusa.com](http://tempotestusa.com) website or by scanning the QR code

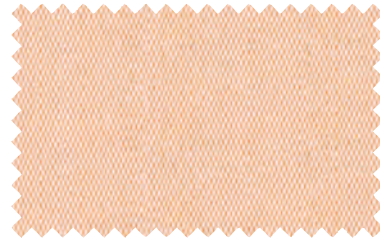
Part #-47 = 47" | Part #-60 = 60" | Part #-60C = coated 60" | Part #-80 = 80" | [P] = Premium color







Candy Pink  
T25/15-47



Antique Pink  
T53-47



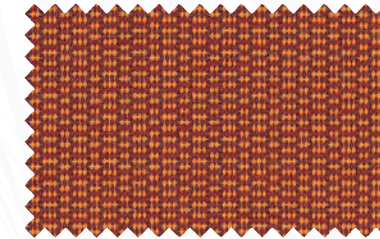
Light Lemon Tweed  
T407/4-47



Holland Tweed  
T407/5-47



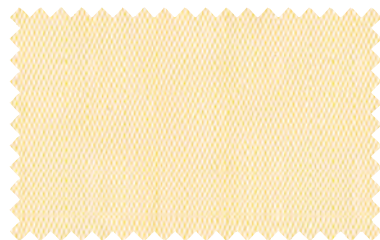
Sicily Orange  
T19-47



Harvest Pumpkin  
T5406/73-47



NEW



Lemon Cream  
T15/12-47



Sunshine  
T684/12-47



Sunflower [P]  
T12-47 | T12-60



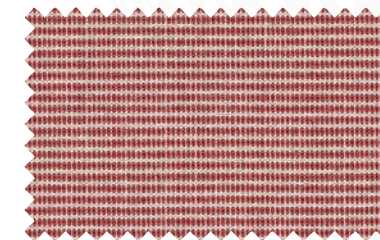
Bossa Nova  
T5407/73-47



NEW



Brick [P]  
T426-47 | T426-60



Brick Tweed  
T407/84-47



Camel  
T58/15-47



Ochre  
T54-47



Pumpkin Tweed  
T407/8-47



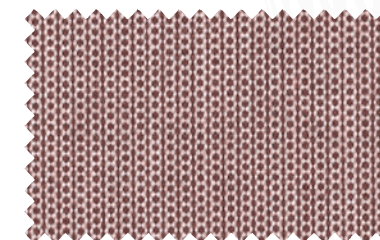
Chutney  
T84/14-47



NEW



Rust  
T84-47



Deco Rose Tweed  
T873/73-47



NEW



Orange Tweed  
T407/9-47



Bright Orange  
T55-47



Orange  
T72-47



Paris Red  
T56-47



Red [P]  
T11-47 | T11-60 | T11-60C



Clay Court  
T98-47



The technical values are available on [tempotestusa.com](http://tempotestusa.com) website or by scanning the QR code

Part #-47 = 47" | Part #-60 = 60" | Part #-60C = coated 60" | Part #-80 = 80" | [P] = Premium color

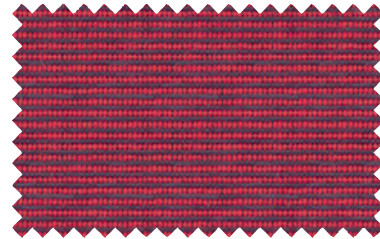




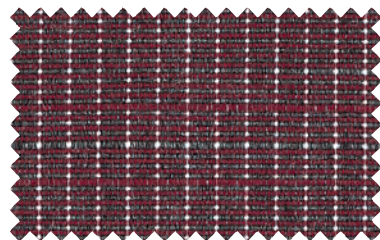
Maroon [P]  
 T415-60 | T415-60C



Burgundy [P]  
 T73-47 | T73-60 | T73-80  
 NEW WIDTHS



Red Tweed [P]  
 T407/11-47 | T407/11-60



Merlot Gessato  
 T1330/513-47



NEW



Black  
 T24-47 | T24-60 | T24-60C | T24-80



**LIFESTYLE COLLECTION - A superior standard of research**

In-depth research into colors and styles has prompted us to create truly exquisite fabrics. The sophisticated final effect is provided by even more beautiful hues, bursting with vitality and enhanced by elaborate textures.



**SETA CRUDA - The return to the natural beauty of imperfection**

A combination of textures which, thanks to a special process, enhance the design of these fabrics with details that are naturally uneven.



## TECHNICAL FEATURES

| COLOR #   | NAME               | PAGE |     |     |     |      | PANTONE | Tempotest Home |
|-----------|--------------------|------|-----|-----|-----|------|---------|----------------|
| T10       | Cobalt             | 12   | 99% | 99% | 50+ | 0.08 | 19-3864 | TH10           |
| T101      | Toast              | 7    | 89% | 99% | 50+ | 0.12 | 16-1341 | TH101          |
| T102      | Cappuccino         | 7    | 85% | 94% | 50+ | 0.13 | 15-1215 | TH102          |
| T106      | Toffee             | 8    | 95% | 99% | 50+ | 0.09 | 18-1018 | TH106          |
| T107      | Carbon             | 10   | 99% | 99% | 50+ | 0.02 | 19-0000 | TH107          |
| T11       | Red [P]            | 15   | 84% | 99% | 50+ | 0.14 | 19-1763 | TH11           |
| T12       | Sunflower [P]      | 14   | 81% | 87% | 50+ | 0.16 | 13-0947 | TH12/15        |
| T13       | Prussian Blue      | 11   | 95% | 99% | 50+ | 0.10 | 19-4049 | TH13           |
| T1302     | Pistachio          | 13   | 88% | 94% | 50+ | 0.12 | 14-0210 |                |
| T1304     | Greige             | 7    | 90% | 97% | 50+ | 0.11 | 15-1309 |                |
| T1330/505 | Ash Gessato ●      | 9    | 96% | 96% | 45  | 0.09 |         | TH727/15       |
| T1330/508 | Toffee Gessato ●   | 7    | 92% | 97% | 50+ | 0.10 |         | TH106          |
| T1330/509 | Hazelnut Gessato ● | 8    | 98% | 99% | 50+ | 0.08 |         | TH930          |
| T1330/512 | Carbon Gessato ●   | 10   | 99% | 99% | 50+ | 0.08 |         | TH107          |
| T1330/513 | Merlot Gessato ●   | 16   | 98% | 99% | 50+ | 0.09 |         | TH73/15        |
| T14       | Tan                | 7    | 96% | 98% | 50+ | 0.09 | 16-1315 | TH14/15        |
| T15       | White              | 6    | 73% | 73% | 15  | 0.19 | 11-4300 | TH15           |
| T15/1     | Cream              | 6    | 85% | 86% | 50+ | 0.13 | 13-0513 | TH151/15       |
| T15/12    | Lemon Cream        | 14   | 76% | 78% | 50+ | 0.17 | 12-1006 | TH105/15       |
| T15/14    | Oyster             | 6    | 83% | 85% | 40  | 0.14 | 13-0403 | TH1033/929     |
| T15/52    | Latte              | 6    | 80% | 81% | 35  | 0.16 | 13-0000 |                |
| T15/79    | Mist               | 9    | 81% | 83% | 25  | 0.15 | 14-4201 | TH79/15        |
| T15/93    | Snow               | 6    | 74% | 74% | 25  | 0.18 | 12-0404 |                |
| T151/929  | Pearl              | 6    | 85% | 87% | 40  | 0.13 | 12-0605 | TH1039/14      |
| T16       | Lime               | 12   | 90% | 98% | 50+ | 0.12 | 16-0237 | TH16           |
| T17/15    | Mid Blue           | 11   | 82% | 93% | 50+ | 0.15 | 16-4020 | TH17/15        |
| T18       | Brown              | 8    | 99% | 99% | 50+ | 0.08 | 19-1241 | TH57           |
| T19       | Sicily Orange      | 15   | 85% | 98% | 50+ | 0.14 | 18-1445 | TH19           |
| T20       | Coral Pink         | 13   | 83% | 96% | 50+ | 0.15 | 17-1635 | TH20           |
| T21       | Powder Blue        | 11   | 84% | 95% | 50+ | 0.14 | 16-4414 | TH21/15        |
| T22       | Shoreline          | 11   | 88% | 96% | 50+ | 0.12 | 16-5123 | TH22           |
| T24       | Black              | 16   | 99% | 99% | 50+ | 0.02 | 19-0303 | TH24           |
| T25/15    | Candy Pink         | 14   | 78% | 88% | 50+ | 0.17 | 14-1419 | TH25/15        |
| T26/15    | Complexion         | 13   | 82% | 92% | 50+ | 0.15 | 15-1239 | TH26/15        |
| T4015/91  | Crest Cement       | 6    | 83% | 85% | 50+ | 0.14 | 13-5304 |                |
| T407/11   | Red Tweed [P]      | 16   | 92% | 99% | 50+ | 0.11 | 19-1650 | TH73/15        |
| T407/13   | Royal Blue Tweed   | 12   | 99% | 99% | 50+ | 0.03 | 19-4027 | TH75           |
| T407/14   | Noisette Tweed     | 7    | 96% | 95% | 50+ | 0.07 | 18-1022 |                |
| T407/16   | Sage Tweed         | 13   | 96% | 97% | 50+ | 0.09 | 17-0610 |                |
| T407/3    | Musk Tweed         | 13   | 99% | 99% | 50+ | 0.08 | 19-5511 | TH62/15        |
| T407/4    | Light Lemon Tweed  | 14   | 76% | 76% | 50+ | 0.17 | 11-0618 |                |
| T407/5    | Holland Tweed      | 15   | 84% | 96% | 50+ | 0.14 | 17-1464 | TH19           |
| T407/52   | Beige Tweed        | 7    | 94% | 95% | 50+ | 0.10 | 16-1010 |                |
| T407/6    | Forest Tweed       | 13   | 99% | 99% | 50+ | 0.02 | 19-5420 | TH5            |

| COLOR #   | NAME              | PAGE |     |     |     |      | PANTONE | Tempotest Home |
|-----------|-------------------|------|-----|-----|-----|------|---------|----------------|
| T407/79   | Silver Tweed      | 10   | 96% | 98% | 50+ | 0.09 | 18-5203 |                |
| T407/8    | Pumpkin Tweed     | 14   | 87% | 95% | 50+ | 0.13 | 16-1253 | TH54/15        |
| T407/84   | Brick Tweed       | 15   | 93% | 97% | 50+ | 0.10 | 17-1525 |                |
| T407/9    | Orange Tweed      | 14   | 81% | 89% | 50+ | 0.15 | 14-1050 | TH55           |
| T407/926  | Driftwood Tweed   | 7    | 95% | 97% | 50+ | 0.09 | 17-1506 | TH926          |
| T407/94   | Grey Tweed        | 9    | 94% | 96% | 50+ | 0.09 | 16-0000 | TH94/15        |
| T414      | Intense Blue      | 12   | 99% | 99% | 50+ | 0.08 | 19-3950 | TH10           |
| T415      | Maroon [P]        | 16   | 99% | 99% | 50+ | 0.08 | 19-1650 | TH73/15        |
| T416      | Pacific Blue      | 11   | 95% | 99% | 50+ | 0.10 | 18-4440 | TH13           |
| T4215/15  | Linen             | 6    | 86% | 88% | 50+ | 0.13 | 13-0607 | TH52/15        |
| T426      | Brick [P]         | 15   | 99% | 99% | 50+ | 0.08 | 19-1250 | TH426/15       |
| T5        | Forest Green      | 13   | 99% | 99% | 50+ | 0.02 | 18-5322 | TH5            |
| T52       | Beige             | 6    | 88% | 91% | 50+ | 0.12 | 15-1216 | TH52/15        |
| T53       | Antique Pink      | 14   | 82% | 87% | 40  | 0.15 | 14-1213 |                |
| T54       | Ochre             | 14   | 92% | 99% | 50+ | 0.10 | 16-1150 | TH54/15        |
| T5406/107 | Carbon Fiber ●    | 10   | 97% | 98% | 50+ | 0.09 | 19-0312 |                |
| T5406/15  | Ice Grey ●        | 9    | 89% | 89% | 20  | 0.12 | 14-4201 |                |
| T5406/17  | Sky Blue ●        | 11   | 83% | 91% | 50+ | 0.14 | 14-4318 | TH17/15        |
| T5406/52  | Coriander ●       | 8    | 96% | 97% | 50+ | 0.09 | 17-1113 |                |
| T5406/6   | Bright Green ●    | 12   | 93% | 97% | 50+ | 0.10 | 15-5534 |                |
| T5406/73  | Harvest Pumpkin ● | 15   | 92% | 96% | 50+ | 0.11 | 16-1260 |                |
| T5406/94  | Mudslide ●        | 8    | 96% | 99% | 45  | 0.09 | 16-1106 |                |
| T5407/107 | Turbulence ●      | 10   | 99% | 99% | 50+ | 0.08 | 19-4215 | TH51377/720    |
| T5407/15  | Silk Grey ●       | 9    | 89% | 89% | 20  | 0.12 | 14-4201 | TH79/15        |
| T5407/17  | Skydiver ●        | 11   | 91% | 98% | 50+ | 0.11 | 19-4151 | TH13           |
| T5407/52  | Sesame ●          | 8    | 94% | 95% | 50+ | 0.10 | 18-1027 |                |
| T5407/6   | Irish Green ●     | 12   | 93% | 99% | 50+ | 0.10 | 16-6138 |                |
| T5407/73  | Bossa Nova ●      | 15   | 92% | 99% | 50+ | 0.11 | 18-1547 |                |
| T5407/94  | Seagrass ●        | 7    | 96% | 96% | 45  | 0.09 | 16-6008 | TH1043/929     |
| T55       | Bright Orange     | 14   | 82% | 92% | 50+ | 0.15 | 15-1164 | TH55           |
| T56       | Paris Red         | 15   | 86% | 98% | 50+ | 0.13 | 18-1662 | TH56/15        |
| T57       | Coffee            | 8    | 99% | 99% | 50+ | 0.08 | 18-1130 | TH57           |
| T57/1     | Sequoia           | 8    | 99% | 99% | 50+ | 0.08 | 19-1333 | TH57           |
| T57/54    | Henna             | 8    | 99% | 99% | 50+ | 0.08 | 19-1334 | TH57           |
| T58/15    | Camel             | 14   | 93% | 98% | 50+ | 0.10 | 16-0940 | TH58/15        |
| T6        | Pool Green        | 12   | 97% | 99% | 50+ | 0.09 | 18-5841 |                |
| T62/15    | Soccer Field      | 13   | 99% | 99% | 50+ | 0.08 | 18-6320 | TH62/15        |
| T684/12   | Sunshine          | 14   | 79% | 83% | 50+ | 0.16 | 13-0941 | TH105/15       |
| T7        | Olive             | 13   | 99% | 99% | 50+ | 0.02 | 19-0315 | TH7            |
| T7/14     | Chive             | 13   | 99% | 99% | 50+ | 0.02 | 19-0323 | TH7            |
| T71/15    | Spa               | 11   | 84% | 89% | 50+ | 0.13 | 13-5315 | TH71/15        |
| T72       | Orange            | 14   | 85% | 96% | 50+ | 0.13 | 17-1464 |                |
| T727/15   | Pebble            | 9    | 97% | 98% | 50+ | 0.08 | 17-0000 | TH727/15       |
| T727/71   | Metal             | 10   | 97% | 98% | 50+ | 0.08 | 17-4402 |                |

| COLOR #  | NAME            | PAGE |     |     |     |      | PANTONE | Tempotest Home |
|----------|-----------------|------|-----|-----|-----|------|---------|----------------|
| T73      | Burgundy [P]    | 16   | 99% | 99% | 50+ | 0.08 | 19-1726 | TH73/15        |
| T74/15   | Lavender        | 11   | 85% | 98% | 50+ | 0.14 | 17-3932 |                |
| T75      | Navy            | 12   | 99% | 99% | 50+ | 0.02 | 19-4027 | TH75           |
| T77      | Bluette         | 11   | 90% | 99% | 50+ | 0.12 | 18-4537 | TH77/15        |
| T782/14  | Durmast         | 6    | 89% | 91% | 50+ | 0.12 | 15-1116 | TH51377/760    |
| T782/87  | Wave            | 11   | 92% | 97% | 50+ | 0.11 | 17-4015 | TH87/15        |
| T79      | Silver          | 9    | 92% | 95% | 50+ | 0.10 | 16-5803 | TH79/15        |
| T8       | Pine Green      | 12   | 94% | 99% | 50+ | 0.10 | 18-5338 |                |
| T81      | Chocolate       | 9    | 99% | 99% | 50+ | 0.02 | 19-0915 | TH81           |
| T84      | Rust            | 15   | 99% | 99% | 50+ | 0.08 | 19-1338 | TH426/15       |
| T84/14   | Chutney         | 15   | 99% | 99% | 50+ | 0.08 | 18-1433 |                |
| T87      | Sapphire        | 12   | 99% | 99% | 50+ | 0.08 | 19-3938 | TH87/15        |
| T87/8    | Air Force Blue  | 12   | 99% | 99% | 50+ | 0.08 | 19-4916 |                |
| T873/15  | Glacier Tweed   | 9    | 89% | 89% | 20  | 0.12 | 14-4102 | TH53777/710    |
| T873/151 | Dune Tweed      | 6    | 89% | 92% | 50+ | 0.12 | 14-1112 | TH1039/930     |
| T873/17  | Skyway Tweed    | 11   | 78% | 84% | 25  | 0.17 | 14-4112 |                |
| T873/2   | Bisque Tweed    | 8    | 99% | 99% | 50+ | 0.02 | 19-0812 | TH873/81       |
| T873/73  | Deco Rose Tweed | 15   | 90% | 93% | 25  | 0.11 | 17-1614 |                |
| T873/78  | Lettuce Tweed   | 13   | 91% | 92% | 30  | 0.11 | 16-5815 |                |
| T88      | Antique Beige   | 7    | 88% | 89% | 50+ | 0.12 | 14-4002 |                |
| T91      | Plum            | 10   | 87% | 99% | 50+ | 0.13 | 17-3612 | TH91           |
| T92      | Indigo          | 12   | 99% | 99% | 50+ | 0.02 | 19-4023 | TH92           |
| T926     | Driftwood       | 7    | 99% | 99% | 50+ | 0.08 | 18-1110 | TH926          |
| T929     | Vanilla         | 7    | 89% | 93% | 50+ | 0.11 | 14-0002 | TH929          |
| T93      | Buttercream     | 6    | 78% | 77% | 50+ | 0.17 | 13-0815 | TH93/15        |
| T930     | Hazelnut        | 8    | 99% | 99% | 50+ | 0.08 | 19-1121 | TH930          |
| T94      | Grey            | 9    | 97% | 98% | 50+ | 0.08 | 16-5803 | TH94/15        |
| T94/15   | Lead            | 9    | 97% | 98% | 50+ | 0.08 | 17-1210 | TH94/15        |
| T97      | Charcoal        | 10   | 99% | 99% | 50+ | 0.02 | 18-0201 | TH97           |
| T97/13   | Midnight Blue   | 10   | 99% | 99% | 50+ | 0.02 | 19-4110 |                |
| T97/8    | Jungle          | 13   | 98% | 99% | 50+ | 0.09 | 19-5920 |                |
| T97/84   | Eggplant        | 10   | 99% | 99% | 50+ | 0.03 | 18-1404 |                |
| T98      | Clay Court      | 15   | 90% | 99% | 50+ | 0.11 | 19-1557 |                |
| T986/106 | Bisquit Tweed   | 8    | 95% | 97% | 50+ | 0.09 | 16-1126 | TH106          |
| T986/107 | Carbon Tweed    | 10   | 99% | 99% | 50+ | 0.08 | 18-4005 | TH51377/720    |
| T986/15  | Ice Tweed       | 9    | 83% | 85% | 35  | 0.14 | 14-4500 |                |
| T986/727 | Pebble Tweed    | 10   | 75% | 76% | 50+ | 0.18 | 16-4402 | TH727/15       |

[P] = Premium color | ● = Lifestyle Collection | ● = Seta Cruda

**SYMBOL**



Solar heat protection



Solar light protection



Protection from U.V. rays



Ratio between the total solar energy transmitted into a room through a solar protection device/window system and the incident solar energy

\* An expanded explanation of the above can be found on page 62

| NAME             | 47"          | 60"        | 60" Coated* | 80"    |
|------------------|--------------|------------|-------------|--------|
| Air Force Blue   | T87/8-47     |            |             |        |
| Antique Beige    | T88-47       |            |             |        |
| Antique Pink     | T53-47       |            |             |        |
| Ash Gessato ●    | T1330/505-47 |            |             |        |
| Beige            | T52-47       | T52-60     | T52-60C     |        |
| Beige Tweed      |              | T407/52-60 |             |        |
| Bisque Tweed     | T873/2-47    |            |             |        |
| Bisquit Tweed    | T986/106-47  |            |             |        |
| Black            | T24-47       | T24-60     | T24-60C     | T24-80 |
| Bluette          | T77-47       |            |             |        |
| Bossa Nova ●     | T5407/73-47  |            |             |        |
| Brick [P]        | T426-47      | T426-60    |             |        |
| Brick Tweed      | T407/84-47   |            |             |        |
| Bright Green ●   | T5406/6-47   |            |             |        |
| Bright Orange    | T55-47       |            |             |        |
| Brown            | T18-47       |            |             |        |
| Burgundy [P]     | T73-47       | T73-60     |             | T73-80 |
| Buttercream      | T93-47       |            |             |        |
| Camel            | T58/15-47    |            |             |        |
| Candy Pink       | T25/15-47    |            |             |        |
| Cappuccino       | T102-47      | T102-60    |             |        |
| Carbon           | T107-47      |            |             |        |
| Carbon Fiber ●   | T5406/107-47 |            |             |        |
| Carbon Gessato ● | T1330/512-47 |            |             |        |
| Carbon Tweed     | T986/107-47  |            |             |        |
| Charcoal         | T97-47       | T97-60     |             |        |
| Chive            | T7/14-47     |            |             |        |
| Chocolate        | T81-47       | T81-60     |             |        |
| Chutney          | T84/14-47    |            |             |        |
| Clay Court       | T98-47       |            |             |        |
| Cobalt           | T10-47       |            |             |        |
| Coffee           | T57-47       |            |             |        |

| NAME               | 47"          | 60"         | 60" Coated* | 80"   |
|--------------------|--------------|-------------|-------------|-------|
| Complexion         | T26/15-47    |             |             |       |
| Coral Pink         | T20-47       |             |             |       |
| Coriander ●        | T5406/52-47  |             |             |       |
| Cream              | T15/1-47     | T15/1-60    | T15/1-60C   |       |
| Crest Cement       | T4015/91-47  |             |             |       |
| Deco Rose Tweed    | T873/73-47   |             |             |       |
| Driftwood          | T926-47      | T926-60     |             |       |
| Driftwood Tweed    | T407/926-47  | T407/926-60 |             |       |
| Dune Tweed         | T873/151-47  |             |             |       |
| Durmast            | T782/14-47   |             |             |       |
| Eggplant           | T97/84-47    |             |             |       |
| Forest Green       | T5-47        | T5-60       | T5-60C      | T5-80 |
| Forest Tweed       | T407/6-47    | T407/6-60   |             |       |
| Glacier Tweed      | T873/15-47   |             |             |       |
| Greige             | T1304-47     |             |             |       |
| Grey               |              | T94-60      | T94-60C     |       |
| Grey Tweed         | T407/94-47   |             |             |       |
| Harvest Pumpkin ●  | T5406/73-47  |             |             |       |
| Hazelnut           | T930-47      |             |             |       |
| Hazelnut Gessato ● | T1330/509-47 |             |             |       |
| Henna              | T57/54-47    |             |             |       |
| Holland Tweed      | T407/5-47    |             |             |       |
| Ice Grey ●         | T5406/15-47  |             |             |       |
| Ice Tweed          | T986/15-47   |             |             |       |
| Indigo             | T92-47       | T92-60      | T92-60C     |       |
| Intense Blue       |              | T414-60     |             |       |
| Irish Green ●      | T5407/6-47   |             |             |       |
| Jungle             | T97/8-47     |             |             |       |
| Latte              | T15/52-47    | T15/52-60   |             |       |
| Lavender           | T74/15-47    |             |             |       |
| Lead               | T94/15-47    |             |             |       |
| Lemon Cream        | T15/12-47    |             |             |       |

| NAME              | 47"          | 60"       | 60" Coated* | 80" |
|-------------------|--------------|-----------|-------------|-----|
| Lettuce Tweed     | T873/78-47   |           |             |     |
| Light Lemon Tweed | T407/4-47    |           |             |     |
| Lime              | T16-47       |           |             |     |
| Linen             | T4215/15-47  |           |             |     |
| Maroon [P]        |              | T415-60   | T415-60C    |     |
| Merlot Gessato ●  | T1330/513-47 |           |             |     |
| Metal             | T727/71-47   |           |             |     |
| Mid Blue          | T17/15-47    |           |             |     |
| Midnight Blue     | T97/13-47    |           |             |     |
| Mist              | T15/79-47    | T15/79-60 | T15/79-60C  |     |
| Mudslide ●        | T5406/94-47  |           |             |     |
| Musk Tweed        | T407/3-47    |           |             |     |
| Navy              | T75-47       | T75-60    | T75-60C     |     |
| Noisette Tweed    | T407/14-47   |           |             |     |
| Ochre             | T54-47       |           |             |     |
| Olive             | T7-47        |           |             |     |
| Orange            | T72-47       |           |             |     |
| Orange Tweed      | T407/9-47    |           |             |     |
| Oyster            | T15/14-47    | T15/14-60 | T15/14-60C  |     |
| Pacific Blue      | T416-47      | T416-60   | T416-60C    |     |
| Paris Red         | T56-47       |           |             |     |
| Pearl             | T151/929-47  |           |             |     |
| Pebble            | T727/15-47   |           |             |     |
| Pebble Tweed      | T986/727-47  |           |             |     |
| Pine Green        | T8-47        |           |             |     |
| Pistachio         | T1302-47     |           |             |     |
| Plum              | T91-47       |           |             |     |
| Pool Green        | T6-47        |           |             |     |
| Powder Blue       | T21-47       | T21-60    | T21-60C     |     |
| Prussian Blue     | T13-47       |           |             |     |
| Pumpkin Tweed     | T407/8-47    |           |             |     |
| Red [P]           | T11-47       | T11-60    | T11-60C     |     |

| NAME             | 47"          | 60"        | 60" Coated* | 80" |
|------------------|--------------|------------|-------------|-----|
| Red Tweed [P]    | T407/11-47   | T407/11-60 |             |     |
| Royal Blue Tweed | T407/13-47   | T407/13-60 |             |     |
| Rust             | T84-47       |            |             |     |
| Sage Tweed       | T407/16-47   |            |             |     |
| Sapphire         | T87-47       |            |             |     |
| Seagrass ●       | T5407/94-47  |            |             |     |
| Sequoia          | T57/1-47     |            |             |     |
| Sesame ●         | T5407/52-47  |            |             |     |
| Shoreline        | T22-47       | T22-60     |             |     |
| Sicily Orange    | T19-47       |            |             |     |
| Silk Grey ●      | T5407/15-47  |            |             |     |
| Silver           | T79-47       | T79-60     |             |     |
| Silver Tweed     | T407/79-47   | T407/79-60 |             |     |
| Sky Blue ●       | T5406/17-47  |            |             |     |
| Skydiver ●       | T5407/17-47  |            |             |     |
| Skyway Tweed     | T873/17-47   |            |             |     |
| Snow             | T15/93-47    | T15/93-60  | T15/93-60C  |     |
| Soccer Field     | T62/15-47    |            |             |     |
| Spa              | T71/15-47    |            |             |     |
| Sunflower [P]    | T12-47       | T12-60     |             |     |
| Sunshine         | T684/12-47   |            |             |     |
| Tan              | T14-47       |            |             |     |
| Toast            | T101-47      | T101-60    |             |     |
| Toffee           | T106-47      | T106-60    |             |     |
| Toffee Gessato ● | T1330/508-47 |            |             |     |
| Turbulence ●     | T5407/107-47 |            |             |     |
| Vanilla          | T929-47      |            |             |     |
| Wave             | T782/87-47   |            |             |     |
| White            | T15-47       | T15-60     | T15-60C     |     |

Part #-47 = 47" | Part #-60 = 60" | Part #-60C = coated 60" | Part #-80 = 80" | [P] = Premium color | ● = Lifestyle Collection | ● = Seta Cruda

\* Please note: The underside of the Tempotest Coated goods may appear darker when compared to the topside of the fabric depending on color. The coated side should be installed on the inside.

# STRIPES



## LIVE REBIRTH | HOLI FESTIVAL

An explosion of fire was the origin of the stars, planets, and heavenly bodies that make up our universe. Thus, the red of fire and the brown of earth are forever bound by an unbreakable bond in which that destructive force became the muse that transformed our world forever.

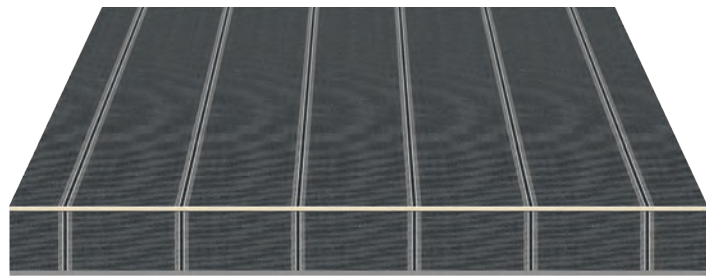
### TECHNICAL FEATURES

| Composition                      | Width (UNI EN 1773/98)      |
|----------------------------------|-----------------------------|
| 100% solution-dyed acrylic fiber | 47"                         |
| Weight (UNI EN 5114/82)          | Water Column (UNI EN 20811) |
| 8.8 oz/yd <sup>2</sup> (+/- 5%)  | ≥ 38 cm                     |

Tempotest fabric meets all requirements of paragraph 15.2 of UNI EN 13561:2009. The data corresponds to the material at the moment this technical data sheet was printed. Para reserves the right to make changes to improve the product technologically. The updated technical data is available at [tempotestusa.com](http://tempotestusa.com).



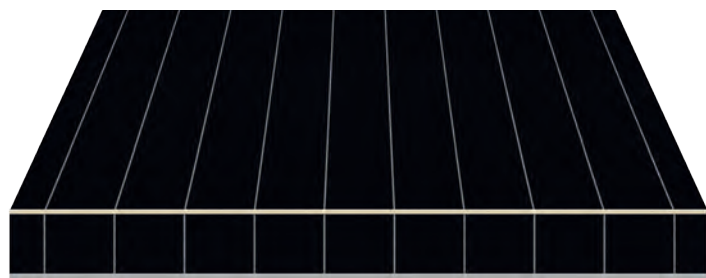
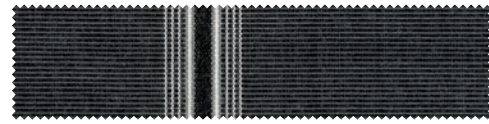
General warranty terms on [tempotestusa.com](http://tempotestusa.com)



repeat 8"

**T1081/24-47** Stockholm

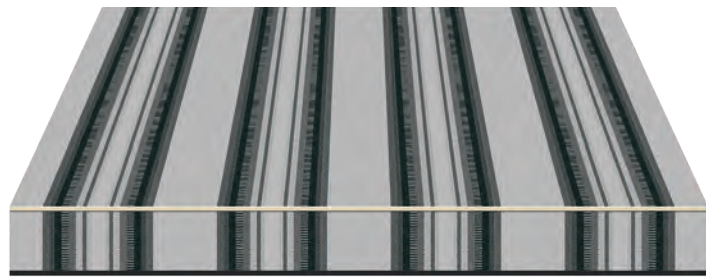
w 47"



repeat 4.8"

**T792/24-47** Sweden

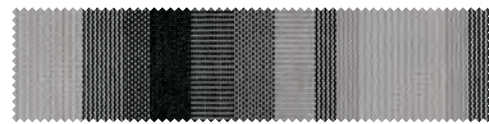
w 47"



repeat 12"

**T950/24-47** Tuxedo

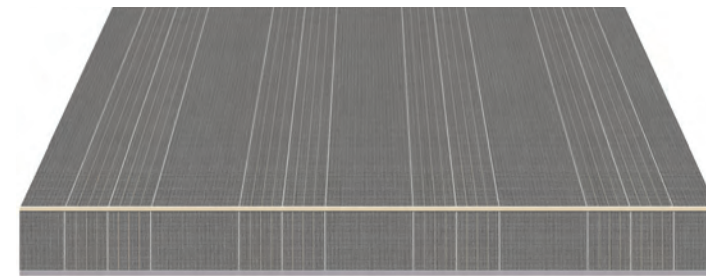
w 47"



repeat 8"

**T790-47** Black/White

w 47"



repeat 12"

**T5396/97-47** Rebel Charcoal

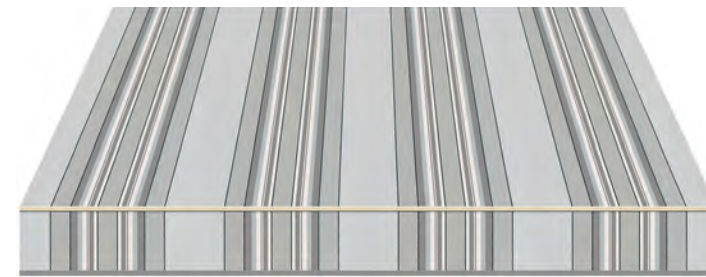
w 47"



repeat 8"

**T68-47** Black/Grey

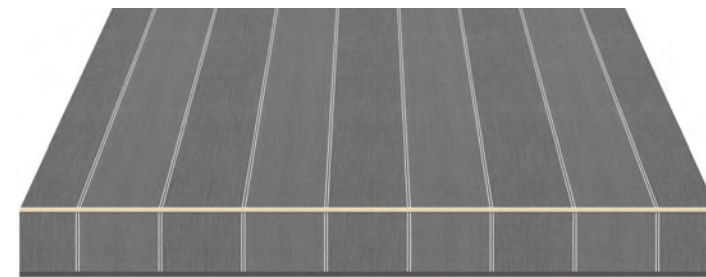
w 47"



repeat 12"

**T633/79-47** Grey Rib

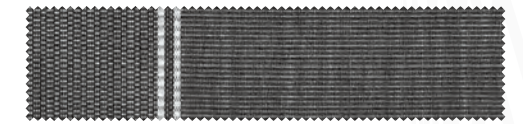
w 47"



repeat 12"

**T5399/107-47** Winter Grey Harmony

w 47"



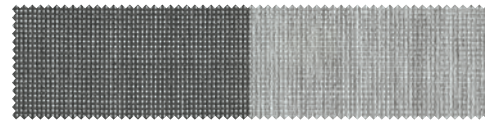
Coordinating Patterns:  
**T5406/107** - Carbon Fiber  
**T5407/107** - Turbulence



repeat 8"

**T5374-47** Black Pearl

w 47"



Coordinating Patterns:

**T986/107** - Carbon Tweed  
**T986/727** - Pebble Tweed



repeat 8"

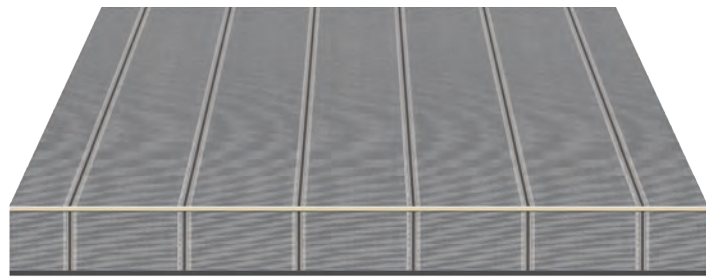
**T5372-47** Pebble Tweed/White

w 47"



Coordinating Pattern:

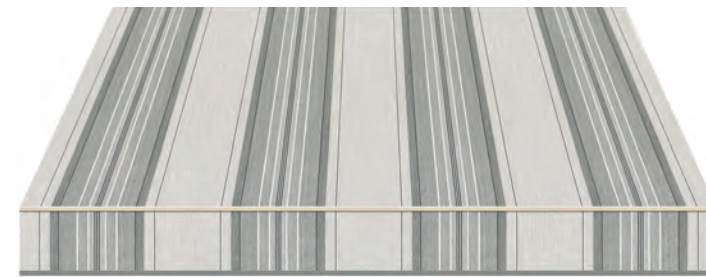
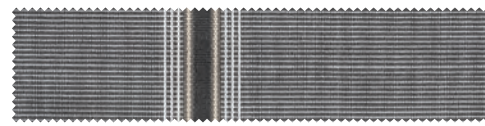
**T986/727** - Pebble Tweed



repeat 8"

**T1081/97-47** Bergen

w 47"



repeat 12"

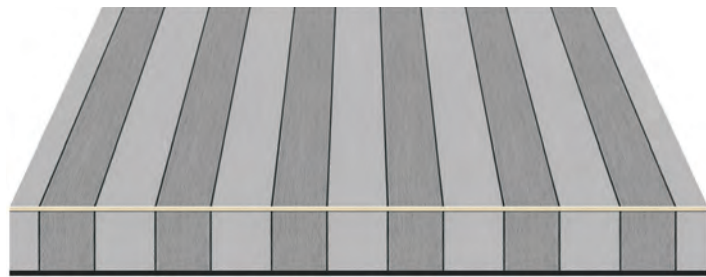
**T5347/79-47** Platinum Grey

w 47"



Coordinating Patterns:

**T986/15** - Ice Tweed  
**T986/727** - Pebble Tweed



repeat 8"

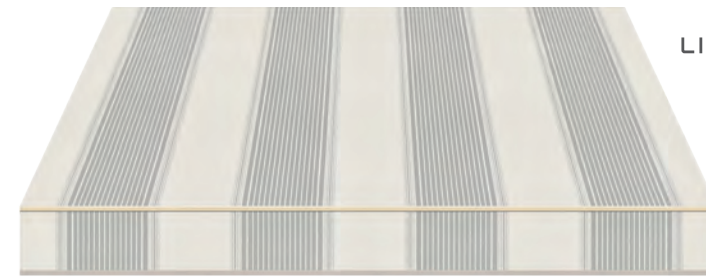
**T5371/727-47** Phantom Grey

w 47"



Coordinating Pattern:

**T727/15** - Pebble



repeat 12"

**T5/179-47** Silver

w 47"



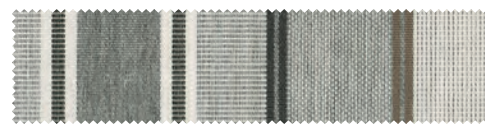
LIBERTY



repeat 12"

**T5348/79-47** Steel Grey

w 47"



Coordinating Patterns:

**T986/15** - Ice Tweed  
**T727/15** - Pebble



repeat 7"

**T439-47** Dark Grey

w 47"

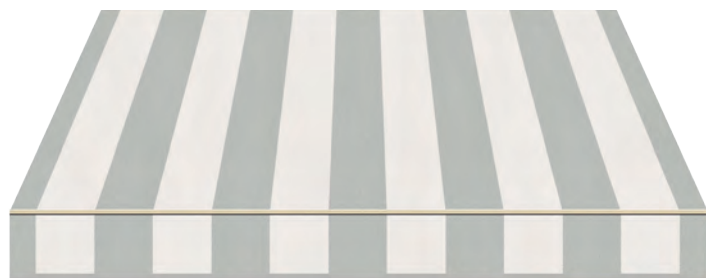




repeat 12"

**T5361/79-47** Grey Frost

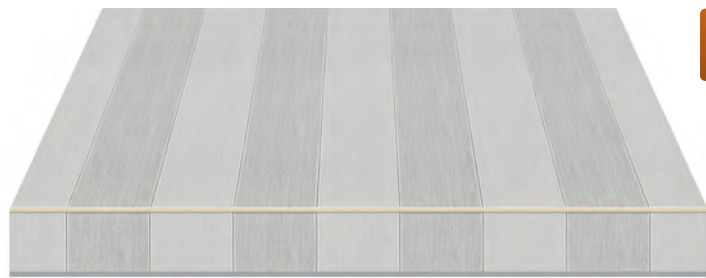
w 47"



repeat 8"

**T242-47** Grey/White

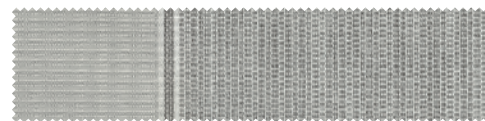
w 47"



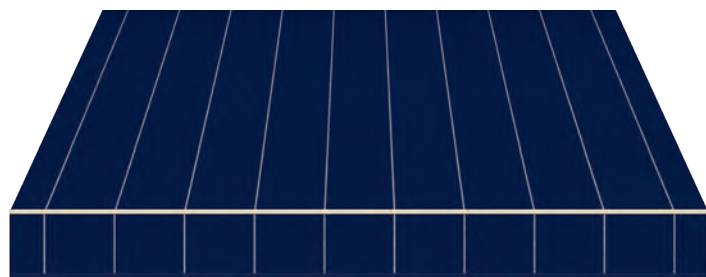
repeat 12"

**T5399/15-47** Lunar Rock Harmony

w 47"



Coordinating Patterns:  
**T5406/15** - Ice Grey  
**T5407/15** - Silk Grey



repeat 4.8"

**T792/75-47** Finland

w 47"



repeat 8"

**T1081/392-47** Oslo

w 47"



repeat 12"

**T636/10-47** Navy/Grey Rib

w 47"



repeat 9"

**T641/10-47** Navy/Beige

w 47"



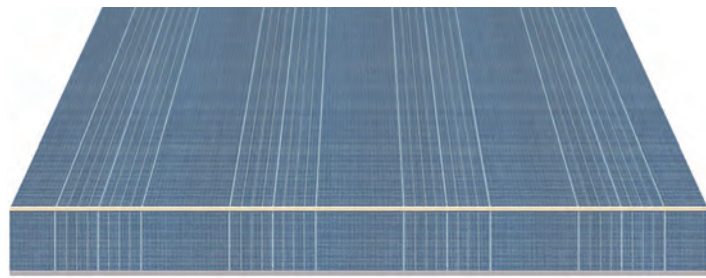
repeat 8"

**T5173/75-47** Bomber Blue

w 47"







repeat 12"

**T5396/87-47** Rebel Sapphire

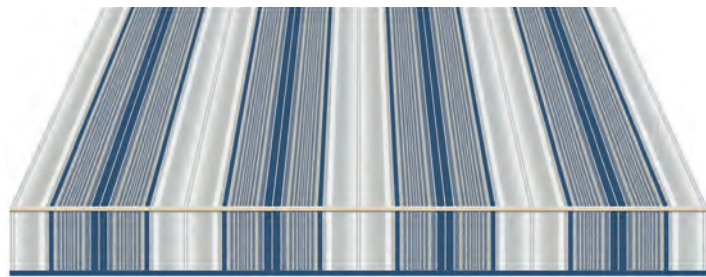
w 47"



repeat 8"

**T5398/107-47** Carbon Blue Blend

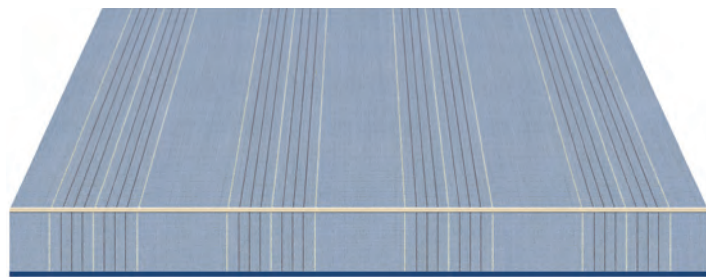
w 47"



repeat 12"

**T5167/2-47** Chambray

w 47"



repeat 12"

**T5396/17-47** Rebel Blue

w 47"



repeat 9"

**T951/92-47** Denim/Almond

w 47"



repeat 12"

**T5355/75-47** Navy Dusk

w 47"



repeat 8"

**T5398/17-47** Cloudy Sky Blend

w 47"



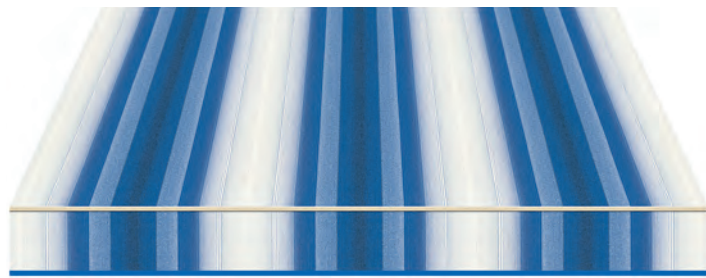
repeat 8"

**T34-47** Navy Frost/White

w 47"



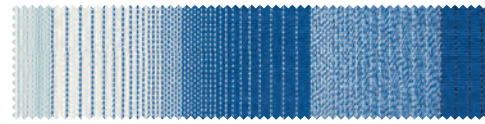
Coordinating Pattern:  
**T873/17** - Skyway Tweed



repeat 16"

**T5001/13-47** Royal/White

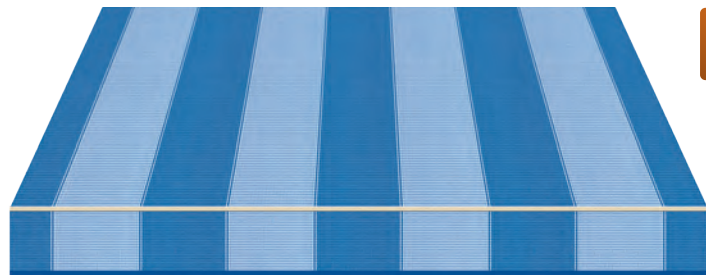
w 47"



repeat 8"

**T31-47** Light Blue/White

w 47"



repeat 12"

**T5399/17-47** Blue Ice Harmony

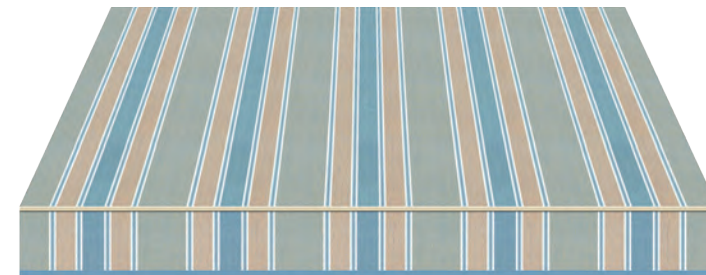
w 47"



*Coordinating Patterns:*

**T5406/17** - Sky Blue

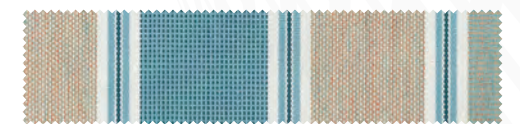
**T5407/17** - Skydiver



repeat 9"

**T948/21-47** Winter Sky

w 47"



repeat 8"

**T116/15-47** Blue/White

w 47"



repeat 12"

**T967/926-47** Greco Grey

w 47"



repeat 8"

**T378-47** Aqua/White

w 47"



repeat 16"

**T5370-47** Morel

w 47"





repeat 12"

**T5349/106-47** Brown Cream

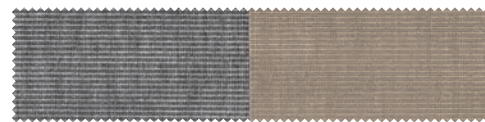
w 47"



repeat 12"

**T5369-47** Charcoal Brown

w 47"



repeat 12"

**T5349/930-47** Crème Latte

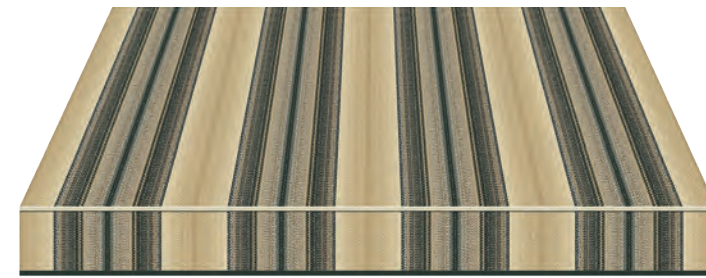
w 47"



repeat 8"

**T969-47** Pearl Grey

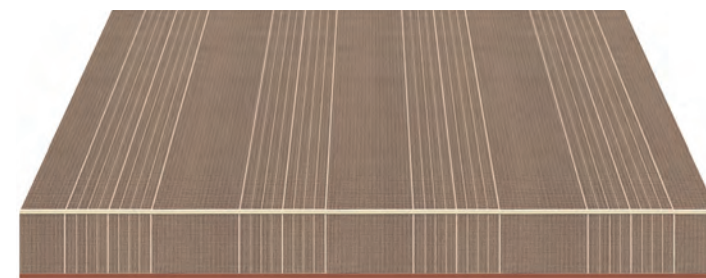
w 47"



repeat 12"

**T945/97-47** Café au Lait

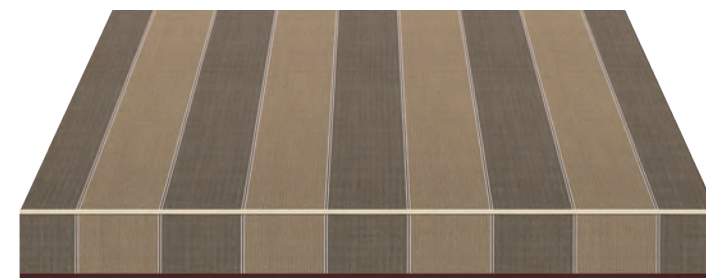
w 47"



repeat 12"

**T5396/930-47** Rebel Hazelnut

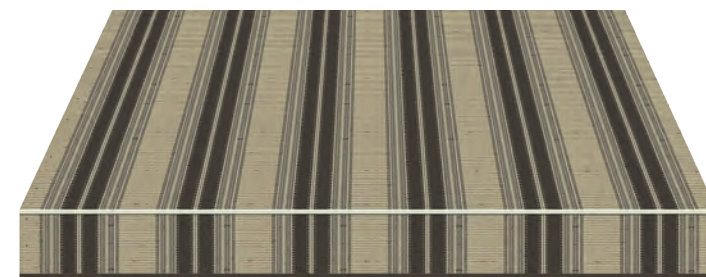
w 47"



repeat 12"

**T5399/52-47** Mocha Cream Harmony

w 47"



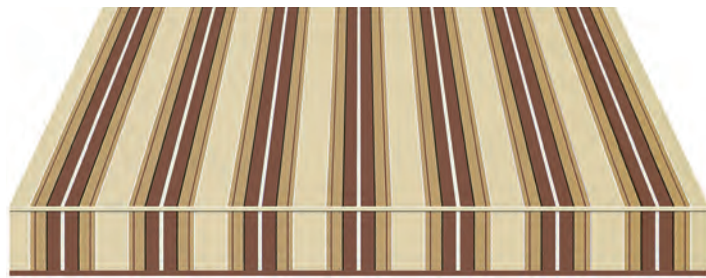
repeat 8"

**T949/91-47** Chocolate Almond

w 47"



Coordinating Patterns:  
**T5406/52** - Coriander  
**T5407/52** - Sesame



repeat 7"

**T158-47** Chocolate Brown/Natural

w 47"



repeat 12"

**T947/14-47** Bamboo Sienna

w 47"



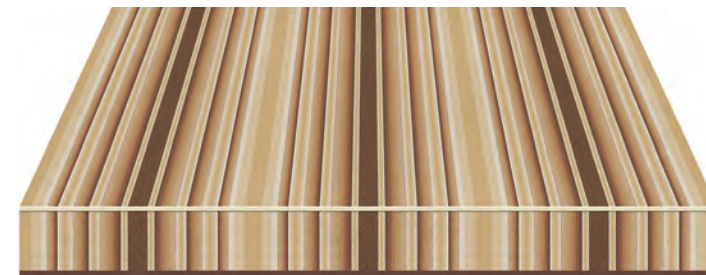
repeat 8"

**T5398/930-47** Desert Dune Blend

w 47"



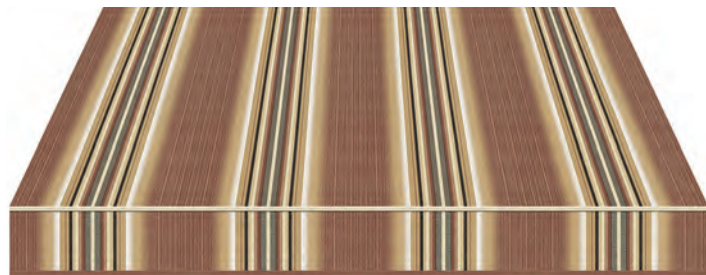
*Coordinating Pattern:*  
**T873/151** - Dune Tweed



repeat 16"

**T5000/57-47** Cocoa Stripe

w 47"



repeat 12"

**T636/14-47** Maple Sugar

w 47"



repeat 9"

**T639/99-47** Beige/Brown Slub

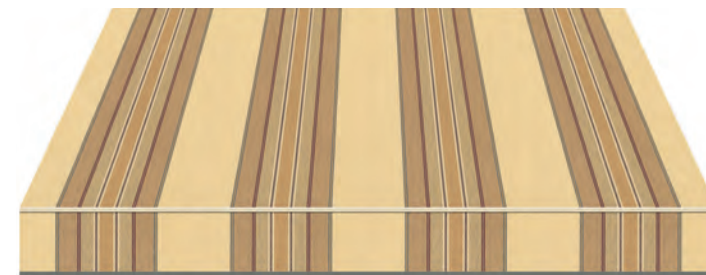
w 47"



repeat 16"

**T5011/57-47** Brown Natural

w 47"

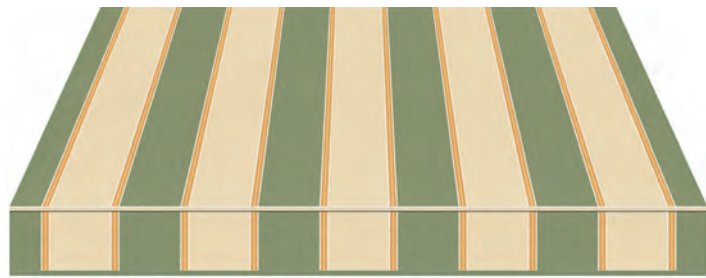


repeat 12"

**T5348/58-47** Lemon Bisque

w 47"

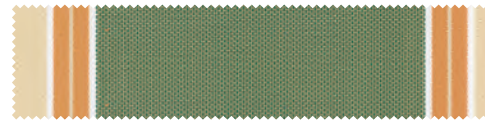




repeat 9"

**T739/701-47** Key Lime

w 47"



repeat 12"

**T634/97-47** Forest/Beige Slub

w 47"



repeat 8"

**T1120-47** Tan Slub

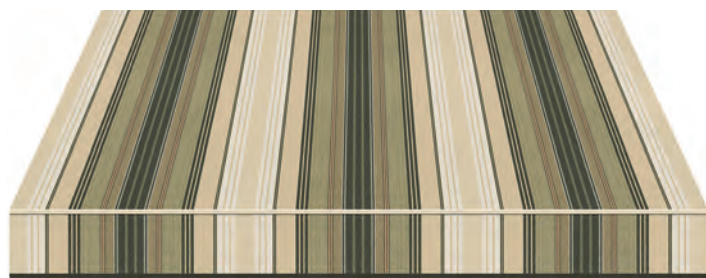
w 47"



repeat 16"

**T5000/7-47** Forest/Beige

w 47"



repeat 16"

**T5011/7-47** Forest Natural

w 47"



repeat 12"

**T17/105-47** Emerald/Beige

w 47"



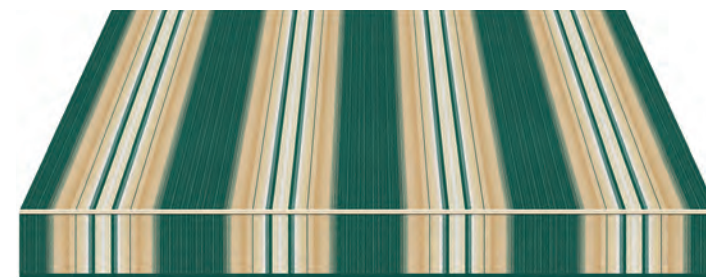
LIBERTY



repeat 8"

**T5371/106-47** Champagne Brown

w 47"



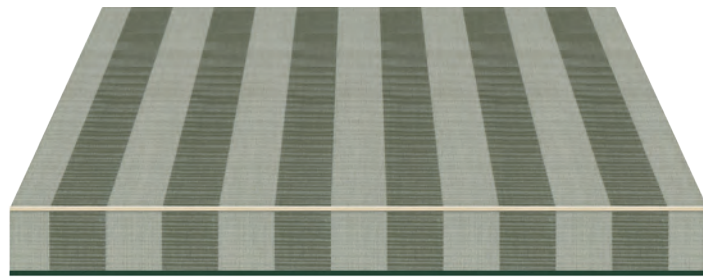
repeat 12"

**T636/5-47** Forest/Beige/Cream

w 47"



Coordinating Pattern:  
**T106 - Toffee**



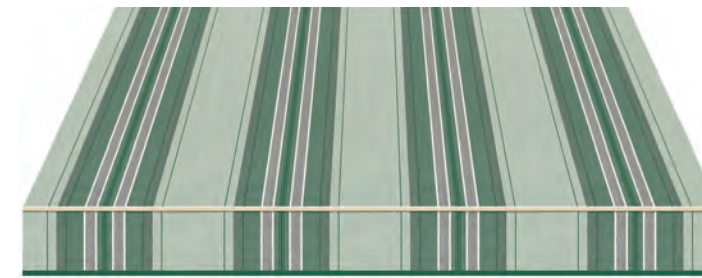
repeat 8"

**T5398/78-47** Fresh Meadow Blend

w 47"



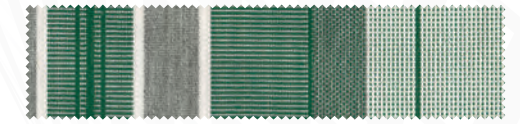
Coordinating Pattern:  
**T873/78** - Lettuce Tweed



repeat 12"

**T5347/62-47** Meadow White

w 47"



Coordinating Pattern:  
**T727/15** - Pebble



repeat 12"

**T931-47** Emerald Cream

w 47"



repeat 8"

**T1081/305-47** Lund

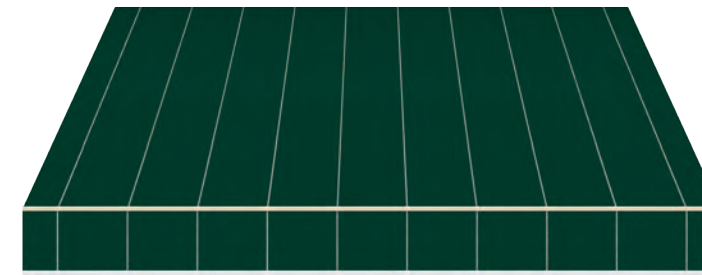
w 47"



repeat 8"

**T33-47** Forest Green/White

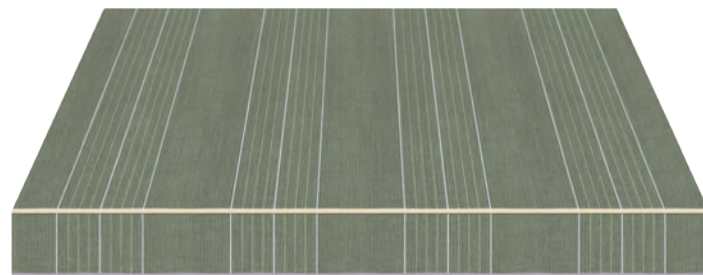
w 47"



repeat 4.8"

**T792/5-47** Denmark

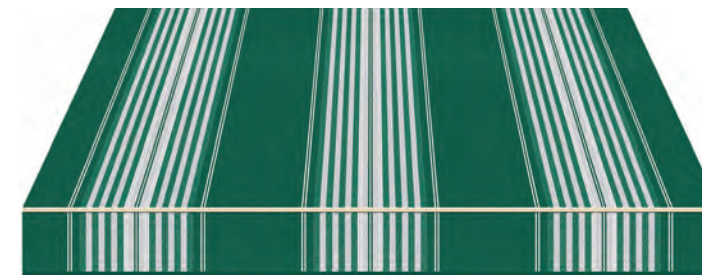
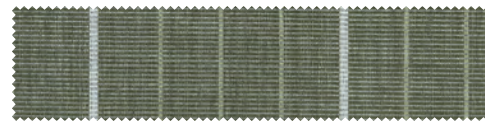
w 47"



repeat 12"

**T5396/78-47** Rebel Green

w 47"

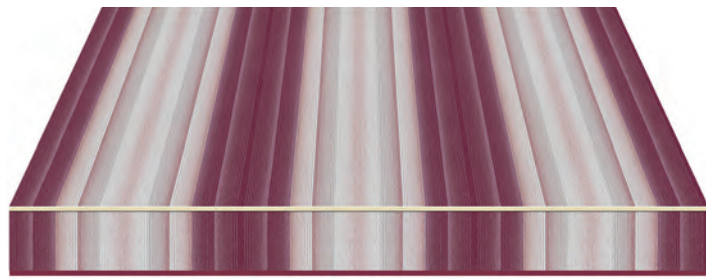


repeat 16"

**T638/5-47** Forest Rib

w 47"

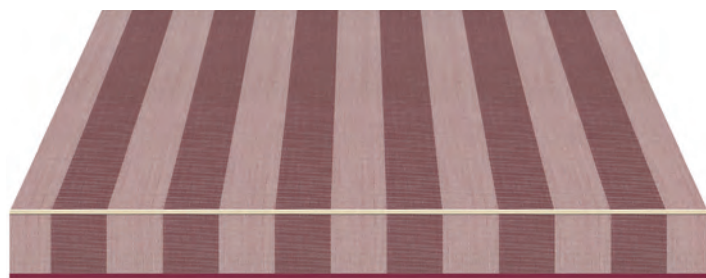
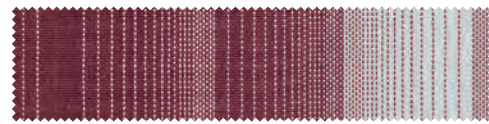




repeat 16"

**T5001/73-47** Burgundy/Grey

w 47"



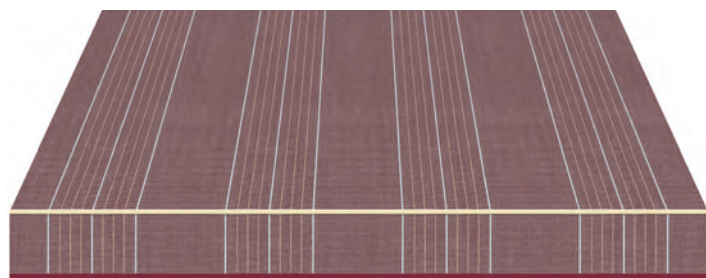
repeat 8"

**T5398/73-47** Bordeaux Ice Blend

w 47"



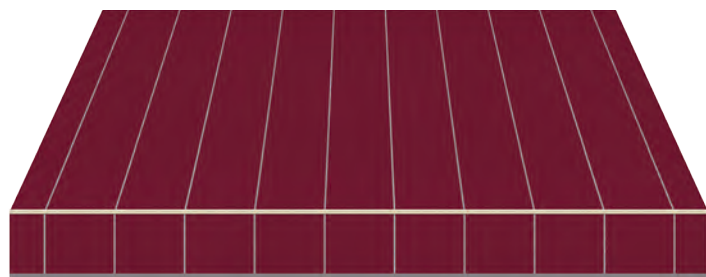
*Coordinating Pattern:*  
**T873/73** - Deco Rose Tweed



repeat 12"

**T5396/73-47** Rebel Burgundy

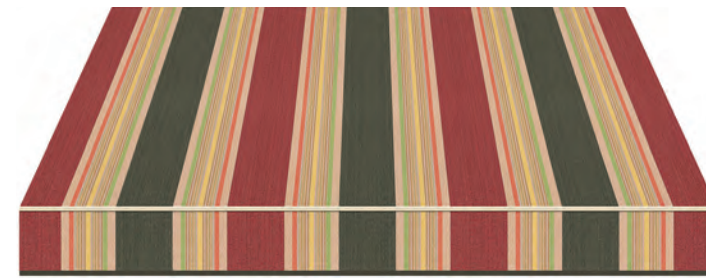
w 47"



repeat 4.8"

**T792/73-47** Norway

w 47"



repeat 16"

**T1150-47** Rust/Green/Multi

w 47"



repeat 16"

**T5011/11-47** Burgundy/Natural

w 47"



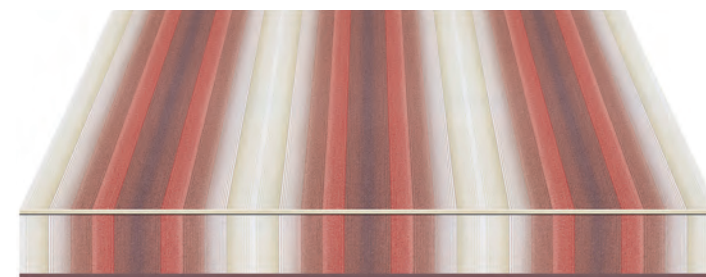
*Coordinating Pattern:*  
**T4215/15** - Linen



repeat 12"

**T932-47** Maroon/Cream

w 47"



repeat 16"

**T5001/11-47** Blush/Ivory

w 47"

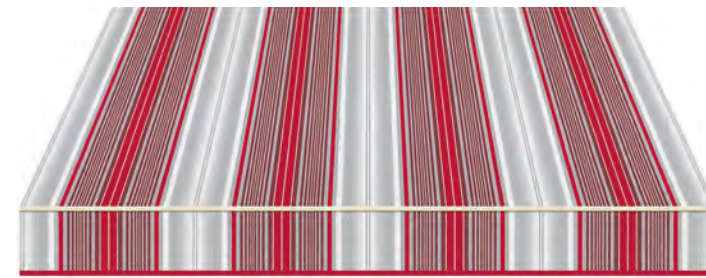




repeat 12"

**T966/426-47** Roasted Peppers

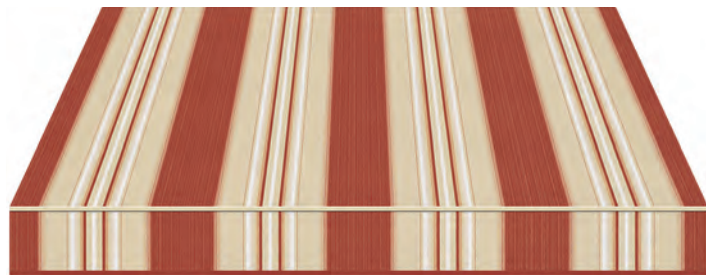
w 47"



repeat 12"

**T5167/11-47** Scarlet/Grey

w 47"



repeat 12"

**T636/84-47** Rust/Cream

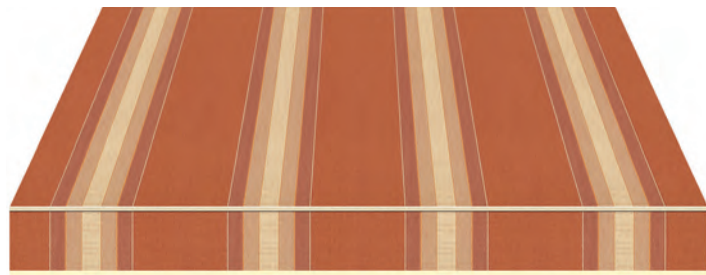
w 47"



repeat 8"

**T35-47** Red/White

w 47"



repeat 12"

**T5349/426-47** Cinnabar

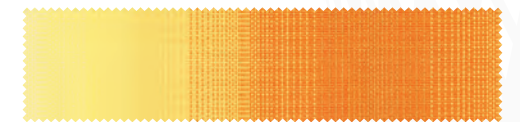
w 47"



repeat 9"

**T770/55-47** Bright Orange/Yellow

w 47"



repeat 12"

**T1101-47** Harvest

w 47"



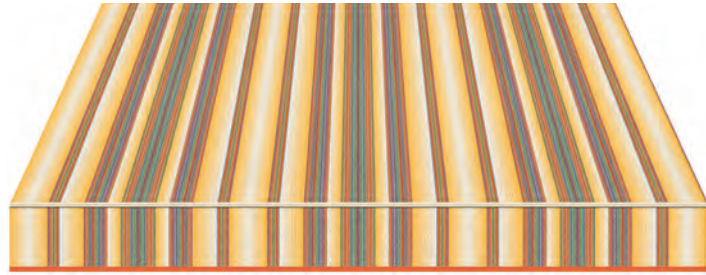
repeat 8"

**T37-47** Yellow/White

w 47"







repeat 16"

**T1243-47** Yellow/Multi

w 47"



## TECHNICAL FEATURES

| COLOR #      | NAME                    | SUBFAMILY      | PAGE |    |    |     |      |
|--------------|-------------------------|----------------|------|----|----|-----|------|
| T1081/24-47  | Stockholm               | Grey Fantasy   | 24   | 99 | 99 | 50+ | 0.03 |
| T1081/305-47 | Lund                    | Green Fantasy  | 41   | 99 | 99 | 50+ | 0.02 |
| T1081/392-47 | Oslo                    | Blue Fantasy   | 29   | 99 | 99 | 50+ | 0.08 |
| T1081/97-47  | Bergen                  | Grey Fantasy   | 26   | 95 | 97 | 50+ | 0.09 |
| T1101-47     | Harvest                 | Brown Fantasy  | 44   | 89 | 92 | 50+ | 0.11 |
| T1120-47     | Tan Slub                | Brown Fantasy  | 38   | 88 | 89 | 50+ | 0.12 |
| T1150-47     | Rust/Green/Multi        | Green Fantasy  | 43   | 90 | 94 | 50+ | 0.12 |
| T116/15-47   | Blue/White              | Block Stripe   | 32   | 84 | 86 | 15  | 0.14 |
| T1243-47     | Yellow/Multi            | Yellow Fantasy | 46   | 81 | 84 | 30  | 0.15 |
| T158-47      | Chocolate Brown/Natural | Brown Fantasy  | 36   | 92 | 93 | 50+ | 0.11 |
| T17/105-47   | Emerald/Beige           | Liberty        | 39   | 84 | 86 | 50+ | 0.14 |
| T242-47      | Grey/White              | Block Stripe   | 28   | 82 | 84 | 15  | 0.14 |
| T31-47       | Light Blue/White        | Block Stripe   | 33   | 78 | 84 | 15  | 0.16 |
| T33-47       | Forest Green/White      | Block Stripe   | 40   | 86 | 86 | 15  | 0.14 |
| T34-47       | Navy Frost/White        | Block Stripe   | 31   | 86 | 86 | 15  | 0.14 |
| T35-47       | Red/White               | Block Stripe   | 45   | 78 | 86 | 15  | 0.17 |
| T37-47       | Yellow/White            | Block Stripe   | 45   | 77 | 80 | 15  | 0.17 |
| T378-47      | Aqua/White              | Block Stripe   | 32   | 78 | 81 | 15  | 0.16 |
| T439-47      | Dark Grey/White         | Block Stripe   | 27   | 85 | 85 | 15  | 0.14 |
| T5/179-47    | Silver                  | Liberty        | 27   | 79 | 82 | 40  | 0.15 |
| T5000/57-47  | Cocoa                   | Brown Fantasy  | 37   | 89 | 90 | 50+ | 0.12 |
| T5000/7-47   | Forest/Beige            | Green Fantasy  | 39   | 89 | 91 | 50+ | 0.12 |
| T5001/11-47  | Blush/Ivory             | Red Fantasy    | 43   | 83 | 87 | 40  | 0.14 |
| T5001/13-47  | Royal/White             | Blue Fantasy   | 32   | 84 | 86 | 30  | 0.14 |
| T5001/73-47  | Burgundy/Grey           | Red Fantasy    | 42   | 91 | 92 | 50+ | 0.11 |
| T5011/11-47  | Burgundy/Natural        | Red Fantasy    | 43   | 87 | 91 | 50+ | 0.13 |
| T5011/57-47  | Brown Natural           | Brown Fantasy  | 36   | 90 | 91 | 40  | 0.11 |
| T5011/7-47   | Forest Natural          | Green Fantasy  | 38   | 90 | 91 | 50+ | 0.12 |

| COLOR #      | NAME                | SUBFAMILY     | PAGE |    |    |     |      |
|--------------|---------------------|---------------|------|----|----|-----|------|
| T5167/11-47  | Scarlet/Grey        | Red Fantasy   | 45   | 86 | 91 | 40  | 0.13 |
| T5167/2-47   | Chambray            | Blue Fantasy  | 30   | 88 | 90 | 45  | 0.12 |
| T5173/75-47  | Bomber Blue         | Blue Fantasy  | 29   | 91 | 92 | 50+ | 0.11 |
| T5347/62-47  | Meadow White        | Green Fantasy | 41   | 84 | 84 | 25  | 0.14 |
| T5347/79-47  | Platinum Grey       | Grey Fantasy  | 27   | 75 | 75 | 25  | 0.18 |
| T5348/58-47  | Lemon Bisque        | Brown Fantasy | 37   | 88 | 90 | 50+ | 0.12 |
| T5348/79-47  | Steel Grey          | Grey Fantasy  | 26   | 76 | 76 | 25  | 0.18 |
| T5349/106-47 | Brown Cream         | Brown Fantasy | 34   | 86 | 90 | 25  | 0.13 |
| T5349/426-47 | Cinnabar            | Brown Fantasy | 44   | 91 | 93 | 50+ | 0.11 |
| T5349/930-47 | Crème Latte         | Brown Fantasy | 34   | 94 | 95 | 50+ | 0.10 |
| T5355/75-47  | Navy Dusk           | Blue Fantasy  | 31   | 84 | 85 | 40  | 0.14 |
| T5361/79-47  | Grey Frost          | Grey Fantasy  | 28   | 82 | 84 | 40  | 0.14 |
| T5369-47     | Charcoal Brown      | Block Stripe  | 34   | 92 | 91 | 50+ | 0.11 |
| T5370-47     | Morel               | Block Stripe  | 33   | 89 | 91 | 50+ | 0.12 |
| T5371/106-47 | Champagne Brown     | Brown Fantasy | 38   | 92 | 96 | 50+ | 0.10 |
| T5371/727-47 | Phantom Grey        | Grey Fantasy  | 26   | 84 | 86 | 50+ | 0.14 |
| T5372-47     | Pebble Tweed/White  | Block Stripe  | 27   | 74 | 74 | 15  | 0.18 |
| T5374-47     | Black Pearl         | Block Stripe  | 26   | 84 | 84 | 50+ | 0.15 |
| T5396/17-47  | Rebel Blue          | Blue Fantasy  | 30   | 79 | 84 | 50+ | 0.16 |
| T5396/73-47  | Rebel Burgundy      | Red Fantasy   | 42   | 86 | 87 | 50+ | 0.13 |
| T5396/78-47  | Rebel Green         | Green Fantasy | 40   | 87 | 87 | 50+ | 0.13 |
| T5396/87-47  | Rebel Sapphire      | Blue Fantasy  | 30   | 86 | 87 | 50+ | 0.13 |
| T5396/930-47 | Rebel Hazelnut      | Brown Fantasy | 35   | 96 | 98 | 50+ | 0.09 |
| T5396/97-47  | Rebel Charcoal      | Grey Fantasy  | 25   | 87 | 87 | 50+ | 0.13 |
| T5398/107-47 | Carbon Blue Blend   | Block Stripe  | 30   | 91 | 92 | 50+ | 0.11 |
| T5398/17-47  | Cloudy Sky Blend    | Block Stripe  | 31   | 77 | 82 | 45  | 0.17 |
| T5398/73-47  | Bordeaux Ice Blend  | Block Stripe  | 42   | 85 | 85 | 50+ | 0.14 |
| T5398/78-47  | Fresh Meadow Blend  | Block Stripe  | 40   | 82 | 83 | 45  | 0.15 |
| T5398/930-47 | Desert Dune Blend   | Block Stripe  | 36   | 89 | 90 | 50+ | 0.12 |
| T5399/107-47 | Winter Grey Harmony | LifeStyle     | 25   | 92 | 92 | 50+ | 0.11 |
| T5399/15-47  | Lunar Rock Harmony  | LifeStyle     | 28   | 78 | 79 | 35  | 0.16 |
| T5399/17-47  | Blue Ice Harmony    | LifeStyle     | 32   | 83 | 90 | 50  | 0.15 |
| T5399/52-47  | Mocha Cream Harmony | LifeStyle     | 35   | 93 | 94 | 50+ | 0.11 |
| T633/79-47   | Grey Rib            | Grey Fantasy  | 25   | 85 | 86 | 40  | 0.13 |
| T634/97-47   | Forest/Beige Slub   | Green Fantasy | 39   | 84 | 85 | 30  | 0.14 |
| T636/10-47   | Navy/Grey Rib       | Blue Fantasy  | 29   | 90 | 90 | 40  | 0.12 |
| T636/14-47   | Maple Sugar         | Brown Fantasy | 36   | 94 | 95 | 50  | 0.10 |
| T636/5-47    | Forest/Beige/Cream  | Green Fantasy | 39   | 88 | 89 | 50  | 0.13 |
| T636/84-47   | Rust/Cream          | Brown Fantasy | 44   | 87 | 89 | 45  | 0.12 |
| T638/5-47    | Forest Rib          | Green Fantasy | 41   | 93 | 94 | 50  | 0.11 |
| T639/99-47   | Beige/Brown Slub    | Brown Fantasy | 37   | 80 | 81 | 40  | 0.16 |
| T641/10-47   | Navy/Beige          | Blue Fantasy  | 29   | 88 | 88 | 35  | 0.13 |
| T68-47       | Black/Grey          | Block Stripe  | 25   | 87 | 87 | 50+ | 0.14 |
| T739/701-47  | Key Lime            | Green Fantasy | 38   | 89 | 91 | 45  | 0.12 |

| COLOR#      | NAME                 | SUBFAMILY     | PAGE |  |  |  |  |
|-------------|----------------------|---------------|------|---|---|---|---|
| T770/55-47  | Bright Orange/Yellow | Red Fantasy   | 45   | 80  | 86  | 50+   | 0.16  |
| T790-47     | Black/White          | Block Stripe  | 24   | 86  | 86  | 15  | 0.14  |
| T792/24-47  | Sweden               | Grey Fantasy  | 24   | 99  | 99  | 50+   | 0.02  |
| T792/5-47   | Denmark              | Green Fantasy | 41   | 99  | 99  | 50+   | 0.02  |
| T792/73-47  | Norway               | Red Fantasy   | 42   | 99  | 99  | 50+   | 0.08  |
| T792/75-47  | Finland              | Blue Fantasy  | 28   | 99  | 99  | 50+   | 0.02  |
| T931-47     | Emerald/Cream        | Block Stripe  | 40   | 88  | 88  | 50+   | 0.13  |
| T932-47     | Maroon/Cream         | Block Stripe  | 43   | 86  | 88  | 50+   | 0.13  |
| T945/97-47  | Café Au Lait         | Brown Fantasy | 35   | 91  | 92  | 50+   | 0.11  |
| T947/14-47  | Bamboo Sienna        | Brown Fantasy | 37   | 80  | 81  | 30  | 0.16  |
| T948/21-47  | Winter Sky           | Blue Fantasy  | 33   | 84  | 91  | 50+   | 0.14  |
| T949/91-47  | Chocolate Almond     | Brown Fantasy | 35   | 96  | 97  | 50+   | 0.09  |
| T950/24-47  | Tuxedo               | Grey Fantasy  | 24   | 95  | 96  | 50+   | 0.09  |
| T951/92-47  | Denim/Almond         | Blue Fantasy  | 31   | 88  | 89  | 50+   | 0.12  |
| T966/426-47 | Roasted Peppers      | Brown Fantasy | 44   | 96  | 99  | 50+   | 0.09  |
| T967/926-47 | Greco Grey           | Grey Fantasy  | 33   | 96  | 93  | 50+   | 0.09  |
| T969-47     | Pearl Grey           | Block Stripe  | 34   | 94  | 93  | 50+   | 0.10  |

**SYMBOL**



Solar heat protection



Solar light protection



Protection from U.V. rays



Ratio between the total solar energy transmitted into a room through a solar protection device/window system and the incident solar energy

\* An expanded explanation of the above can be found on page 62



**LIFESTYLE COLLECTION • A superior standard of research**

In-depth research into colors and styles has prompted us to create truly exquisite fabrics. The sophisticated final effect is provided by even more beautiful hues, bursting with vitality and enhanced by elaborate textures.



**SETA CRUDA • The return to the natural beauty of imperfection**

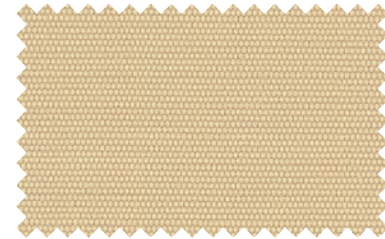
A combination of textures which, thanks to a special process, enhance the design of these fabrics with details that are naturally uneven.



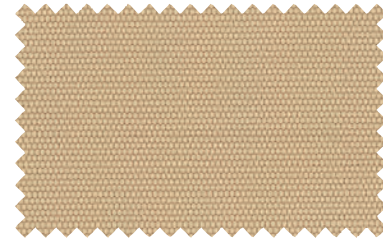
**STARLIGHT® FR**  
*Flame Retardant*



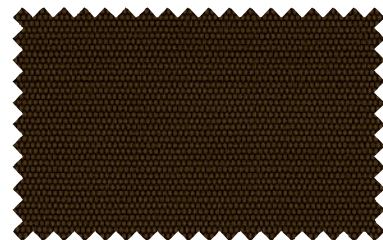
**STARLIGHT FR**  
T6015/300-60 - Snow



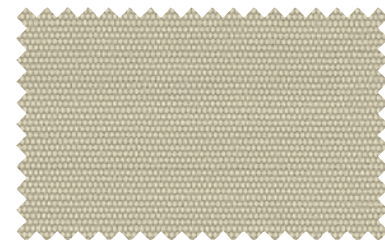
**STARLIGHT FR**  
T6015/301-60 - Buttercream



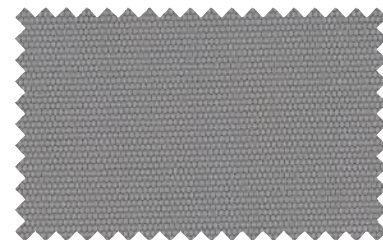
**STARLIGHT FR**  
T6090/300-60 - Toast



**STARLIGHT FR**  
T6930/300-60 - Chocolate



**STARLIGHT FR**  
T6929/300-60 - Cappuccino



**STARLIGHT FR**  
T6079/300-60 - Grey



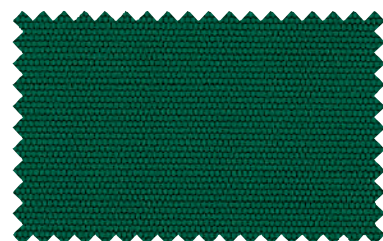
**STARLIGHT FR**  
T6097/300-60 - Charcoal



**STARLIGHT FR**  
T6024/300-60 - Black



**STARLIGHT FR**  
T6012/300-60 - Yellow



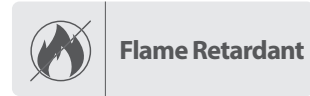
**STARLIGHT FR**  
T6008/300-60 - Forest Green



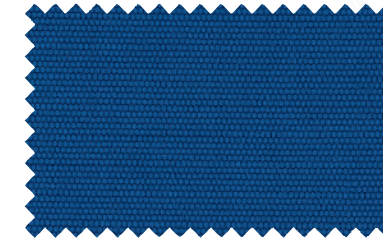
**STARLIGHT FR**  
T6011/300-60 - Clay Court



**STARLIGHT FR**  
T6073/300-60 - Burgundy



**STARLIGHT FR**  
T6092/300-60 - Indigo



**STARLIGHT FR**  
T6416/300-60 - Pacific



Tempotest STARLIGHT® FR is woven using our innovative 100% solution-dyed PET fiber with inherent Flame Retardant properties. This high-tenacity fabric has excellent color fastness and is resistant to UV degradation. Finished with our Teflon Extreme treatment, Tempotest Starlight FR is water and oil repellent, anti-mold, and stain resistant. Tempotest Starlight FR is perfect for use in public areas that require flame retardant fabrics such as hotels, bars, restaurants, and various other public buildings. The fire resistant properties make it suitable for use in closed and insulated structures where stoves, heaters, and other sources of heating are used. Tempotest Starlight FR is extremely dimensionally stable and is well suited for large structures. The fabric meets or exceeds the maximum UV protection value for fabrics (UPF 50+).

#### TECHNICAL FEATURES

|                        |   |
|------------------------|---|
| <b>Composition</b>     | 100% solution-dyed PET FR outdoor   |
| <b>Width</b>           | 60"   |
| <b>Thickness</b>       | 0.017"  |
| <b>Weight</b>          | 8.8 oz/yd <sup>2</sup> (+/- 5%)   |
| <b>Water column</b>    | ≥ 35 cm (UNI EN 20811)  |
| <b>Spray Test</b>      | Grade 4 (UNI EN 24920)  |
| <b>Finishing</b>       | Teflon™ treatment, soil and mold resistant, water repellent                                       |
| <b>Lightfastness</b>   | 4/5 - 5 degree grey scale (UNI EN ISO 105-B04, 1000 hours)  |
| <b>Breaking load</b>   | Warp: 2300 N - elongation 40%<br>Weft: 1100 N - elongation 40%<br>(UNI EN 13934-1)                |
| <b>Fire resistance</b> | Class 1 (UNI EN 9177)   B1 (DIN 4102)   NFPA 701-10   MVSS 302<br>TITLE 19-SECTION 1237   CPAI 84 |
| <b>Maintenance</b>     | Brush with water and mild soap. Rinse thoroughly.<br>Dry before rewinding.                        |



Flame retardant



Recyclable



Water-repellent



Weldable



UV stability



Duration of the color

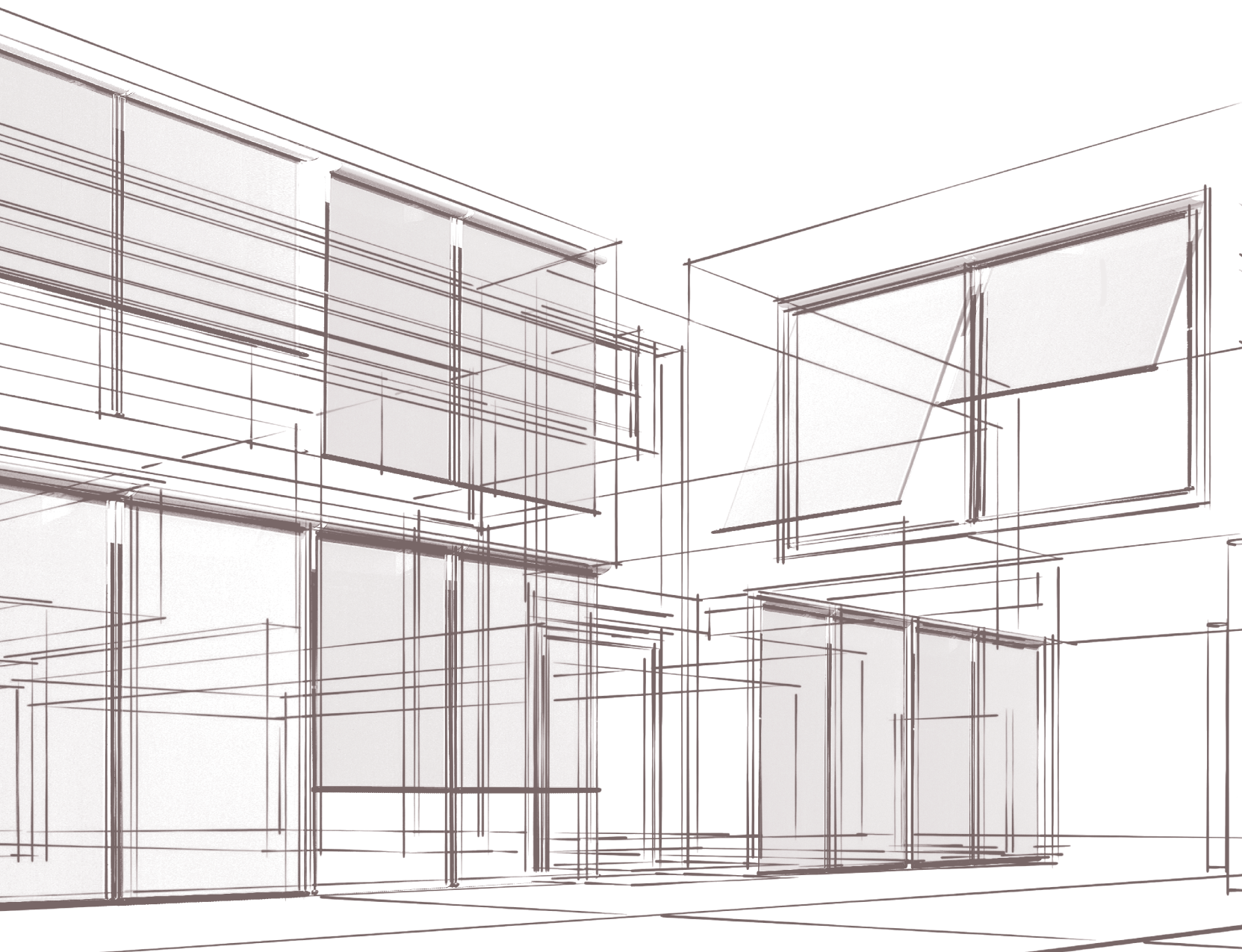


Dimensional stability



Easy to clean





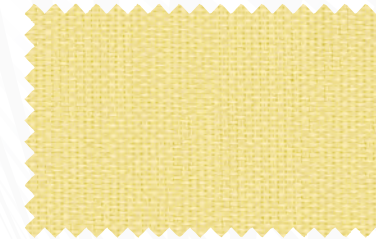
**STARSCREEN**<sup>®</sup>



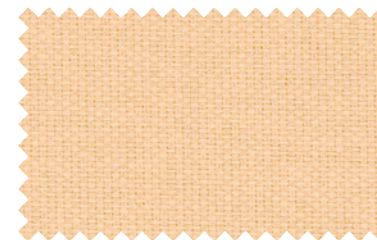
White  
 T8015/400-128



Creme  
 T8015/401-128



Mellow Yellow  
 T8023/400-128



Apricot Ice  
 T8028/400-128



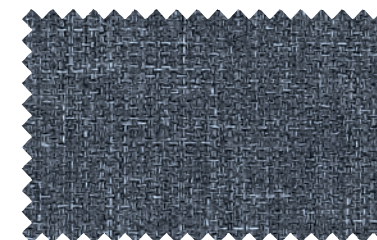
Wood Ash  
 T8090/400-128



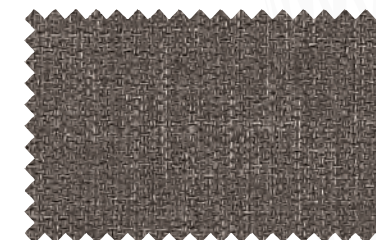
Vanilla  
 T8929/400-128



Silver  
 T8079/400-128



Denim Blue  
 T8592/492-128



Denim Grey  
 T8293/493-128



Burgundy  
 T8073/400-128

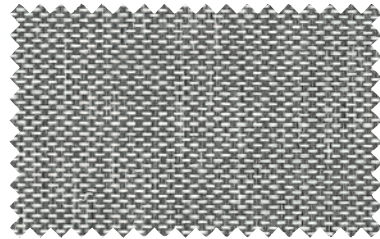


Jaffa Orange  
 T8211/411-128

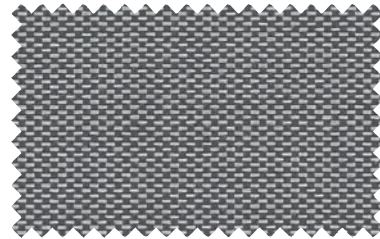


Bright Lime  
 T8027/400-128

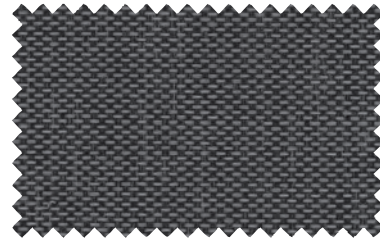
The technical values are available on [tempotestusa.com](http://tempotestusa.com) website or by scanning the QR code



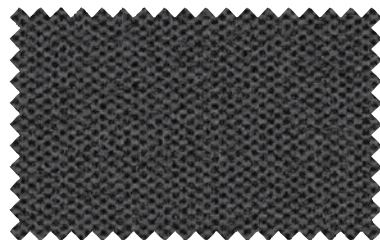
Lunar Rock  
T8197/415-128



Cloud Burst  
T8097/415-128



Smoked Pearl  
T8971/497-128



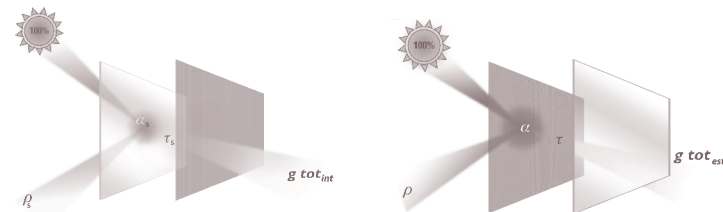
Charcoal  
T8097/400-128



Black  
T8024/400-128



| CODE          | PANTONE                    | NCS           | RAL  |
|---------------|----------------------------|---------------|------|
| T8015/400-128 | 11-0103 Egret              | S 0502 - G50Y | 9003 |
| T8015/401-128 | 12-0104 White Asparagus    | S 2010 - Y10  | 1015 |
| T8023/400-128 | 12-0720 Mellow Yellow      | S 0520 - Y    | 1018 |
| T8024/400-128 | 19-4005 Stretch Limo       | S 9000 - N    | 9011 |
| T8027/400-128 | 14-0244 Bright Lime        | S 2060 - G70Y | 6017 |
| T8028/400-128 | 13-1020 Apricot Ice        | S 0520 - Y30R | 1034 |
| T8073/400-128 | 19-2024 Rhododendron       | S 6030 - R10B | 4004 |
| T8079/400-128 | 16-3802 Ash                | S 3500 - N    | 7040 |
| T8090/400-128 | 14-1108 Wood Ash           | S 2020 - Y10R | 1001 |
| T8097/400-128 | 12-0720 Castelrock         | S 7502 - B    | 7015 |
| T8097/415-128 | 17-1502 TPX Cloudburst     | S 5500 - N    | 7042 |
| T8197/415-128 | 14-4201 TPX Lunar Rock     | S 2000 - N    | 9006 |
| T8211/411-128 | 16-1454 TPX Jaffa Orange   | S 1080 - Y60R | 2010 |
| T8293/493-128 | 19-0809 TPX Chocolate Chip | S 6010 - Y30R | 7006 |
| T8592/492-128 | 18-3910 TPX Folkstone Gray | S 6010 - R70B | 5000 |
| T8929/400-128 | 14-6305 Pelican            | S 3005 - Y20R | 7044 |
| T8971/497-128 | 18-0000 TPX Smoked Pearl   | S 7000 - N    | 7043 |



**HEAT SHIELD & ENHANCEMENT OF LIGHT**

Placed outside or inside the glass, Tempotest Starscreen absorbs and rejects up to 97% of the heat caused by solar irradiation while preserving the passage of light. Its particular thread gives a pleasant diffusion of light.

**TEMPOTEST STARSCREEN® ECO-FRIENDLY**

**PVC FREE  
FORMALDEHYDE FREE  
HALOGEN FREE  
IN COMPLIANCE WITH REACH REGULATION**

Tempotest STARSCREEN® is an innovative fabric, unique in its type, because of its technical qualities, specifically it is not PVC coated. It has a nice textile hand that, together with its dimensional stability, make it perfect in appearance and particularly suitable for the architectural design world. Thanks to its solution-dyed PET fiber, Tempotest Starscreen can be used both indoor and outdoor without losing its original color. This helps to preserve the beauty of the building design. The carefully calculated transparency removes solar glare without restricting light into the environment. This leads to a significant reduction in the use of air conditioning and artificial light, and therefore is important to energy conservation. Ensuring transparency from inside while shading the view from outside, this fabric is suitable for home and office projects where privacy is essential.

The Teflon Extreme treatment makes Tempotest Starscreen repellent to water, stains, and dirt, so is easy to maintain and clean.

Tempotest Starscreen is classified flame retardant in passing title 19 - Section 1237, NFPA 701-2010, MVSS 302. Starscreen is formaldehyde free and is recyclable, in accordance with REACH regulation.

**TECHNICAL FEATURES**

|                        |  |
|------------------------|--|
| <b>Composition</b>     | 100% solution-dyed PET FR outdoor  |
| <b>Width</b>           | 128"   |
| <b>Thickness</b>       | 0.02"  |
| <b>Weight</b>          | 6.49 oz/yd <sup>2</sup> (+/- 5%)   |
| <b>Finishing</b>       | Teflon™ soil and mold resistant, oil and water-repellent   |
| <b>Lightfastness</b>   | 7/8-8 degree blue scale (EN ISO B02) ≥ 4 degree grey scale after 1000 hours of exposure (EN ISO B04) |
| <b>Breaking load</b>   | Warp: 1200 N - elongation 32.5%<br>Weft: 920 N - elongation 37.5%<br><b>(UNI EN 13934-1)</b>         |
| <b>Tear Strength</b>   | Warp: 82<br>Weft: 54   |
| <b>Fire resistance</b> | Class 1 (UNI 9177), B1 (DIN 4102), M1, NFPA 701-2010 test 1 small scale, CSFM T19 spec.              |
| <b>Maintenance</b>     | Clean with a damp cloth  |
| <b>Openess Factor</b>  | 3.5%   |

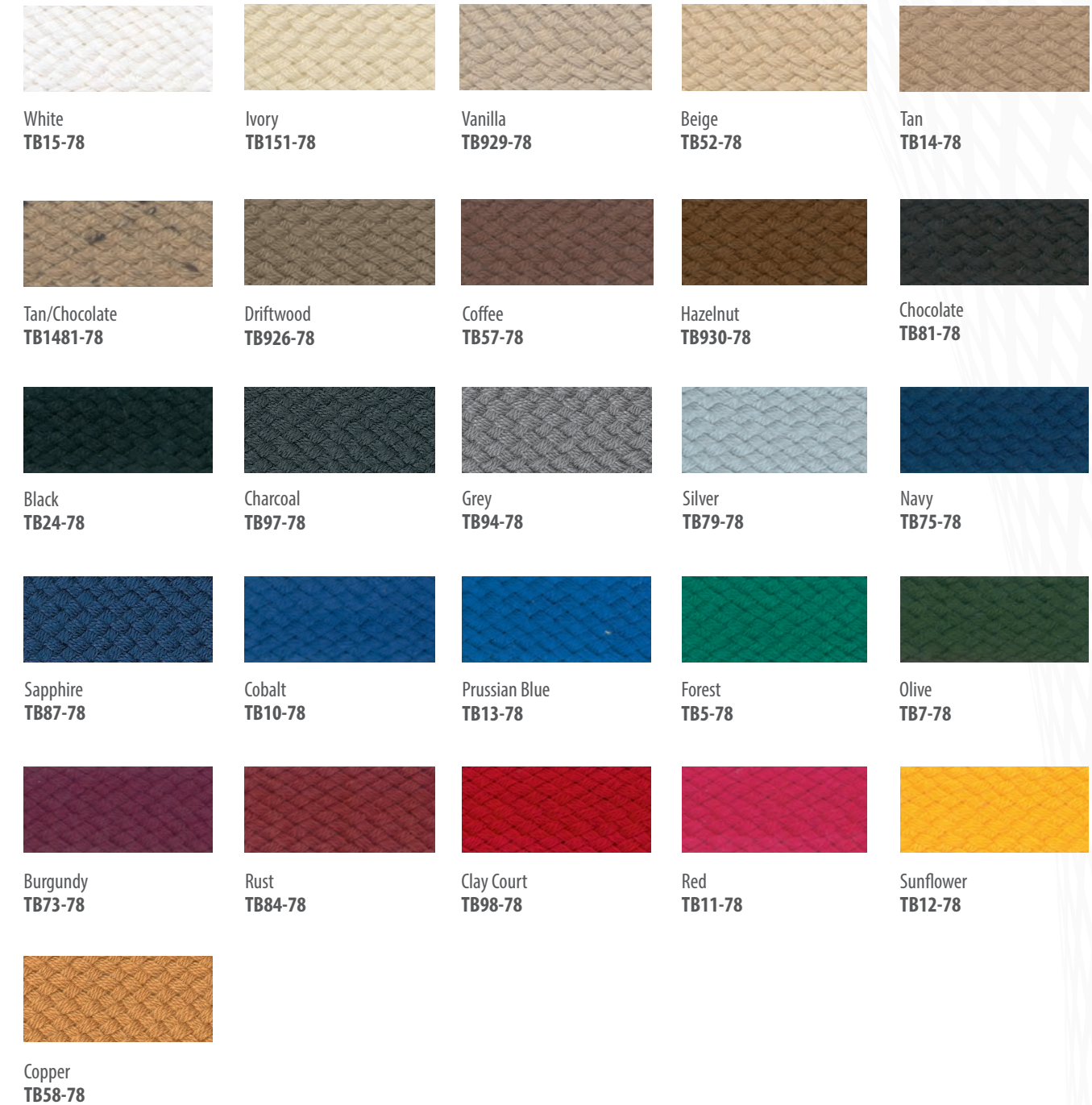


|                        |                       |               |                 |               |              |
|------------------------|-----------------------|---------------|-----------------|---------------|--------------|
| PVC free               | Flame retardant       | Recyclable    | Water-repellent | Weldable      | UV stability |
| Duration of the colors | Dimensional stability | Easy to clean | Glare control   | Low thickness |              |

# AWNING BINDING TAPE

Tempotest Awning Binding Tape is 100% acrylic and is color coordinated with the Tempotest line of awning and marine fabric. It has a fine, soft hand and is available in a wide range of colors. Tempotest Awning Bindings are suitable for use with any awning and marine fabric.

This binding has the same solution-dyed construction as the Tempotest fabric, providing excellent exposure resistance to sun and atmospheric contents, as well as the actions of molds, micro-organisms, and salt.



## TECHNICAL FEATURES

|             |                            |
|-------------|----------------------------|
| Composition | 100% solution-dyed acrylic |
| Width       | 7/8"                       |
| Roll Length | 164 yards (150 m)          |

## INFORMATION

### QUALITY, PERFORMANCE, & CHARACTERISTICS OF ACRYLIC FABRICS USED FOR SUN PROTECTION

A retractable awning is installed to protect people and their environments from solar radiation. Through the regulation of heat and light, they are meant to increase the thermal comfort and visual protection of the area they are covering. Retractable awnings and solar shading systems can also be installed for reason of privacy, decoration, and/or energy savings. Tempotest fabrics must meet all technical and stylistic requirements, and are therefore subjected to strict lab tests both during and after the production process. These tests ensure our fabrics meet the high-performance demands you can expect from Tempotest.

Weight, breaking load, tear strength, dimensional stability, water column, water repellency, color fastness, solar energy performance, and other characteristics are measured with sophisticated technological instruments and must comply with specific international standards. Due to the nature of the fiber, acrylic fabrics can show small imperfections once installed onto the hardware and should not be considered defects.

The following sections illustrate some irregularities that woven fabrics could exhibit. While these are part of the technical characteristics of any solution-dyed acrylic fabric, it is possible to minimize the intensity of these phenomena with proper installation and regular maintenance. None of the aesthetic imperfections, that may occur, will compromise the performance of the fabric or make it less suitable for the functions as described above.



### UNDULATIONS NEAR THE SEAMS

The continuous action of winding and unwinding of the cloth may cause an over-tensioning in the area of the seams where the fabrics are overlapped and therefore thicker. This tensioning can cause folds in the area near the seam. These marks may also be referred to as embossing. This phenomenon can be accentuated by the humidity. The visibility can differ depending on the color and different light conditions. The undulations become more likely with the increase of the awning dimensions and/or the increase of the tension applied to the fabric.



1

### UNDULATIONS ALONG THE EDGES OF THE COVER

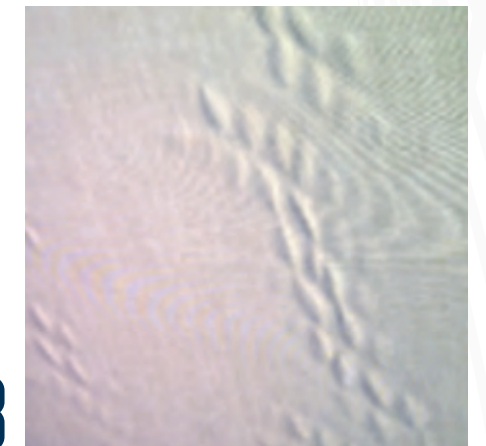
Retractable awning fabric is kept in tension by the lateral arms extending the front bar away from the roller tube. Consequently, it is possible that the most tension is located in the center of the cover. The lateral edges, which are not subjected to sufficient tension to keep them taut, can fold under and/or exhibit some rippling. This phenomenon can also occur when the awning is used as protection against rain if the pitch of the awning does not allow for proper runoff. One or more pockets of water can form and create uneven tension. Therefore, it is not advisable to expose awnings with insufficient pitch to rain conditions.



2

### FABRIC FOLDS OR DIMPLING

It is possible that during the winding and unwinding, the canvas can exhibit some mild lateral shifting. This movement can cause some minor folds or dimpling which can take the shape of a honeycomb. The greater the number of fabric layers wrapped onto a roller tube, the greater the possibility of lateral movement, which can lead to these undulations. This phenomenon can be accentuated if the cloth is wound while still wet. Therefore, it is advisable to let the cloth dry before rolling it up. This will also help prevent the possibility of mold growth.



3

## INFORMATION

### FOLDS OF COMPRESSION

These folds are formed during handling of the material and can occur in both the packaging phase and/or while mounting the cover onto the hardware itself. Sometimes folding the cover is unavoidable. In light colors, this phenomenon can be amplified and show a darker color on the surface side of the fold, which can look like dirt. Continual movement of the cloth can accentuate this imperfection in the long-term. Many installers have perfected the art of transport and assembly and take special care to minimize the appearance of these compression marks.

4



### CRAZING LINES & THE "WRITING EFFECT"

The finishes and coatings used to guarantee the performance of both water-resistant and waterproof outdoor fabrics can show markings caused by handling. This slight discoloration is often referred to as crazing, or the "writing effect", and is typically more visible on darker tones. These markings typically dissipate in time after extended exposure to the elements.

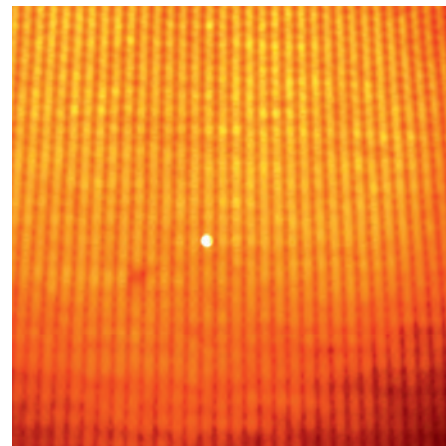
5



### MICRO-HOLES IN FABRIC

Acrylic fabrics are treated with a particular finishing process that stiffens the hand of the fabric which allows the cover to remain tight when used on a traditional awning. When used on a retractable awning, this characteristic can give rise to the formulation of micro-holes in correspondence with the folds of the fabric that are formed due to the continuous mechanical action of hardware.

6



## MAINTENANCE

### SUGGESTED FABRIC CARE & MAINTENANCE

Air pollution, smog, and/or other kinds of particles may be deposited on Tempotest fabrics. Oftentimes, dirt of this nature can be removed by simply brushing the surface of the fabric with a soft brush and then spraying it with clean warm water (not to exceed 100°F) and allowing it to air dry.

Periodically, the fabric should undergo a deeper cleaning. Avoid the use of detergents, use only mild soaps like Woolite® or Ivory® soap. Gently brush the surface of the fabric with a solution of clean warm water and non-detergent soap (2 ounces of mild soap in a gallon of water not hotter than 100°F) and allow to sit for 15 minutes. Then, rinse thoroughly to completely remove the soap and allow the fabric to fully dry in the open-air.

Some locations may lead to tougher stains. Tree resin or sap may be transferred to the fabric or mold can grow in areas where water pockets are present. In these situations, it is recommended to follow the procedure above and add bleach to the solution, diluted at a ratio of 1:16 per gallon of clean warm water (no hotter than 100 F).

Do not iron Tempotest fabrics with steam and do not dry using electrical devices. During the winter season, it is advisable to store the fabric in a dry and well-ventilated environment.





## A GREEN STORY



### COGENERATION PLANT

In order to further protect the environment both locally and globally, Parà has invested in a modern cogeneration plant. The purpose of this plant is to generate both electric and thermal energy using three 8-cycle endothermic engines powered by methane gas. Cogeneration is used to recover the hot water and/or steam by-product from the manufacturing process. This process leads to considerable energy savings when compared to the conventional separate production of electric and thermal energy via electric power stations and thermal engines.

### WATER RECYCLING

Respecting and protecting the environment have always been cornerstones of company operations at Parà. We are very proud of our cutting-edge waste water treatment plant located in Pontirolo Nuovo, Province of Bergamo. This single-stage biological plant also includes a large settling pond that works in conjunction with the various stages of purification, including the treatment of nitrogen-based compounds and the drainage of sludge. The plant treats approximately 530,000 gallons of water per day with a 94% yield.

### 215,000 SF OF SOLAR PANELS ON THE ROOFS OF PARÀ

For a company so well-known for offering sun protection, Parà also relies on the sun as a major energy source. There are currently over 215,000 square feet of photovoltaic solar panels installed on the roofs of the Pontirolo Nuovo and the Sovico plants. These panels are able to produce approximately 1,000 kw/h of clean renewable energy.



### ÖEKO-TEX® CERTIFICATION

To help protect the environment, Tempotest has received ÖEKO-TEX® Standard 100 certification. An Öeko-Tex certified fabric means that it does not contain any harmful products and is in harmony with the environment.

### REACH REGULATION COMPLIANT

On June 1st, 2007, the REACH Regulation (CE) n. 1907/2006 was enacted by the European Parliament. This regulation is responsible for publishing an individualized *Candidate List* of substances considered harmful to human health and the environment. All products placed on the market cannot contain more than 0.1% (by weight) of such substances without it being clearly indicated to the consumer that such a presence exists. All Tempotest and Tempotest Star Collection products comply with REACH and do not contain more than 0.1% of any of the substances now listed on the *Candidate List*. Furthermore, Parà is committed to monitoring any future updates to the chemical substances listed on the aforementioned *Candidate List*. This continual monitoring is in an effort to quickly intervene if ever a newly added substance was used by a supplier during the production of any raw materials supplied to us. Our use of only the highest-quality suppliers has meant that this issue has never occurred to date.

### USE OF FORMALDEHYDE

Formaldehyde is a volatile organic compound (VOC) and is used in many textile production processes. When these types of fabrics are located in closed areas with no ventilation, they may cause discomfort to some people. Although all of Parà's products meet the standards provided by Öeko-Tex Standard 100 (formaldehyde content < 300 ppm), Parà was able to further reduce the formaldehyde content in its fabrics to much lower levels without affecting the performance features of the fabric itself.



Tested for harmful substances.  
[www.oeko-tex.com/standard100](http://www.oeko-tex.com/standard100)

## VISUALIZER

### APP FOR SMARTPHONES & TABLETS



Tempotest Visualizer USA is the application for tablets and smartphones that allows you, through the technology of virtual reality, to easily choose the type of awning and the Tempotest fabric suitable to satisfy any architectural need.

Tempotest Visualizer allows you to photograph your home or building, project an awning style in 3D, and insert any combination of fabrics available from the Tempotest collection. You select the placement of the virtual awning on the building. Its size can then be adjusted according to your preference while keeping the real designs and repeat scale of the Tempotest fabric. The awning will be visible from different angles as if it were actually mounted.

Visualize an awning on your building in five steps:

- TAKE** a photo of a home or building using your phone's camera.
- SELECT** the photo in the app from your library and choose one or more awnings.
- CHOOSE** the type of awning and the Tempotest fabric that fits your style.
- PLACE** and adjust the awning with the tools on the device.
- SAVE** the photo to share.

A full tutorial highlighting all the features and tools can be found on YouTube.

Tempotest Visualizer uses the innovative technology of virtual reality to take the guess work out of choosing your awning style and pattern. We make it simple to visualize the right Tempotest fabric for your home or business.



## BEAUTY IS TIMELESS



DISTRIBUTED EXCLUSIVELY BY :



**miami**<sup>™</sup>  
CORPORATION

800.543.0448 | MIAMICORP.COM



PARA  
**TEMPOTEST**<sup>®</sup>  
ITALIAN PERFORMANCE FABRICS

AWNING & SHADE COLLECTION